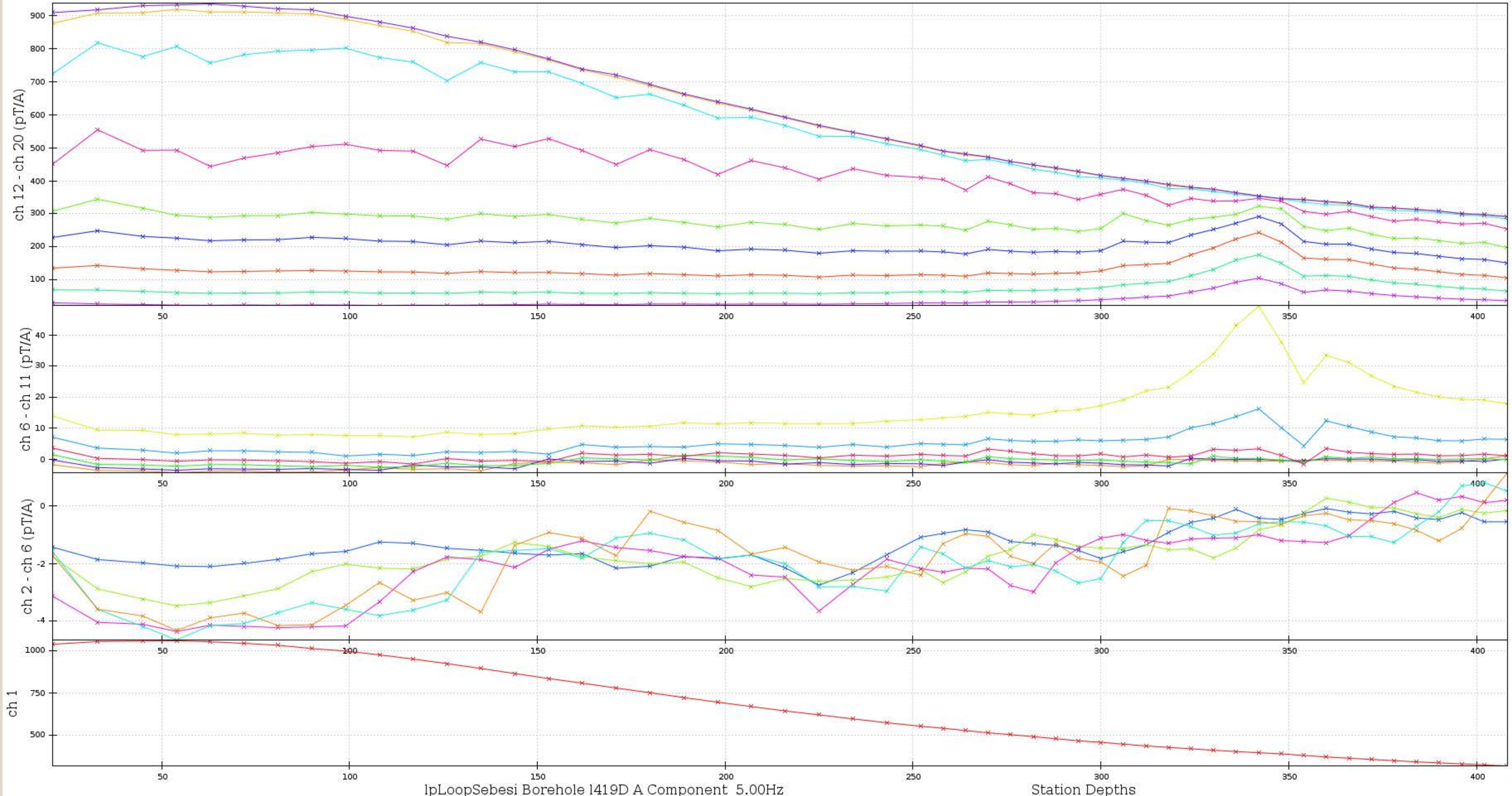
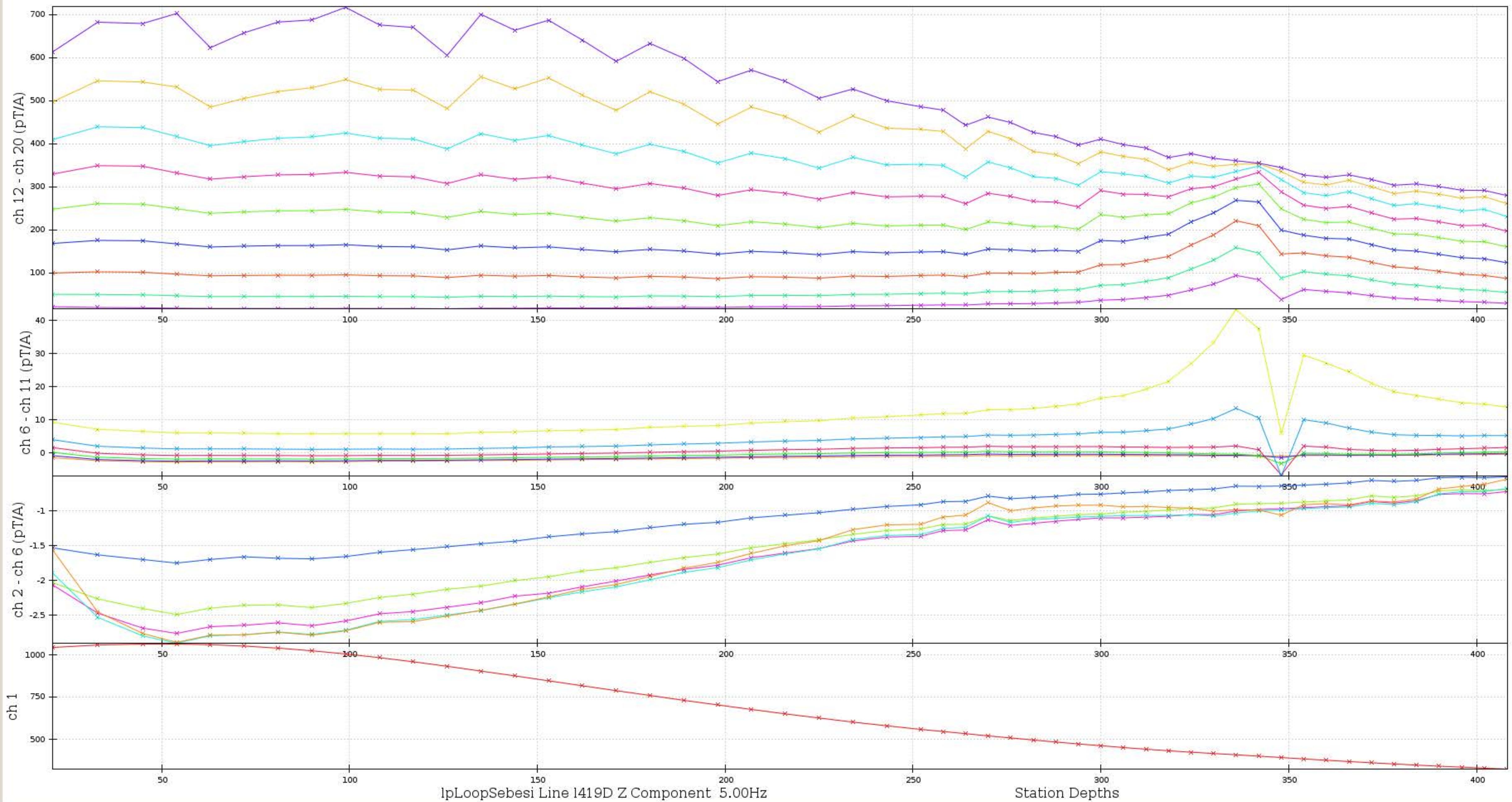


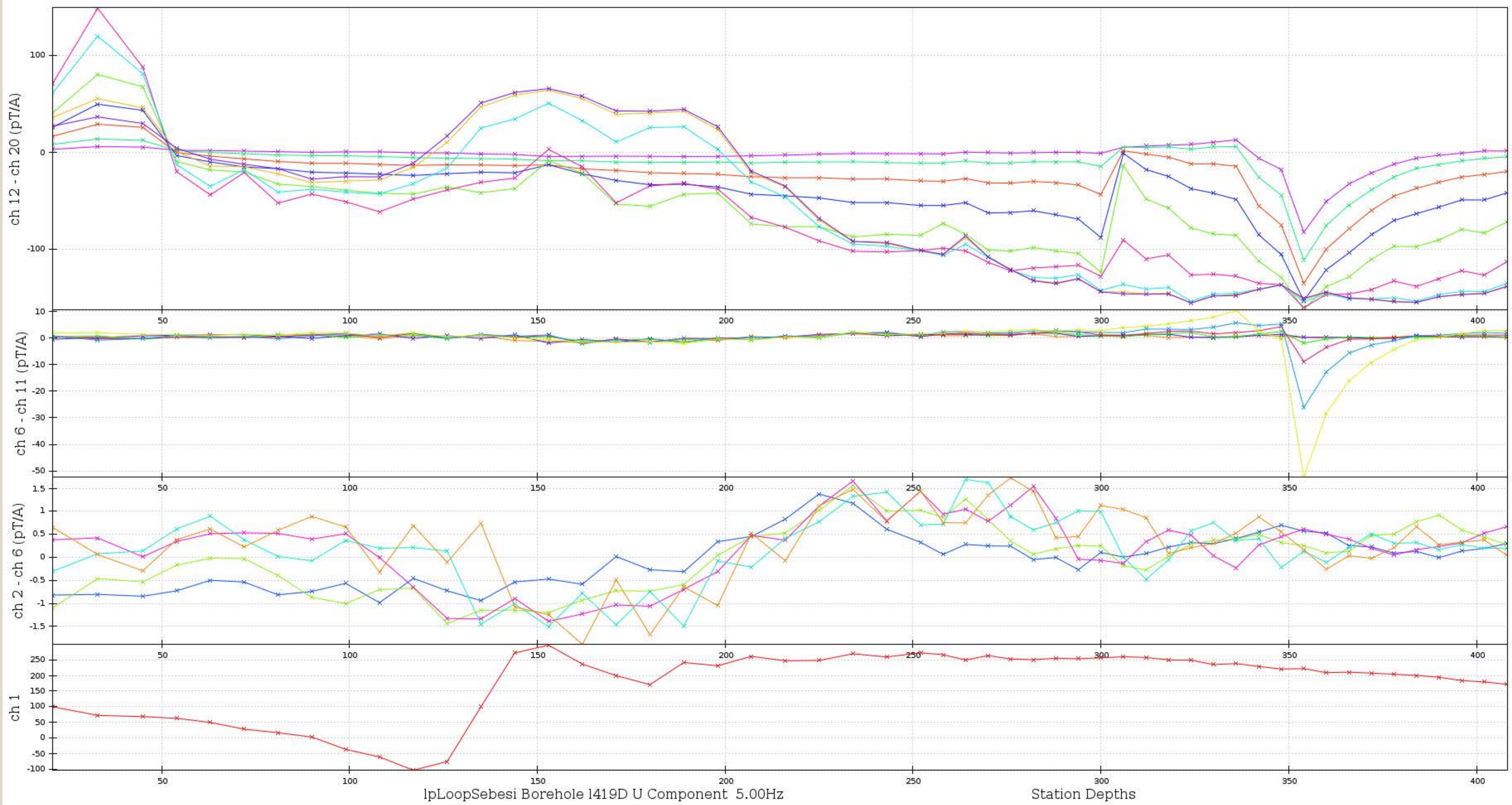
ch 1 := (channel - HSENSOR)/abs(1) * 1.0 | ch 2 - ch 20 := (channel - REFERENCE)/abs(1) * 1.0



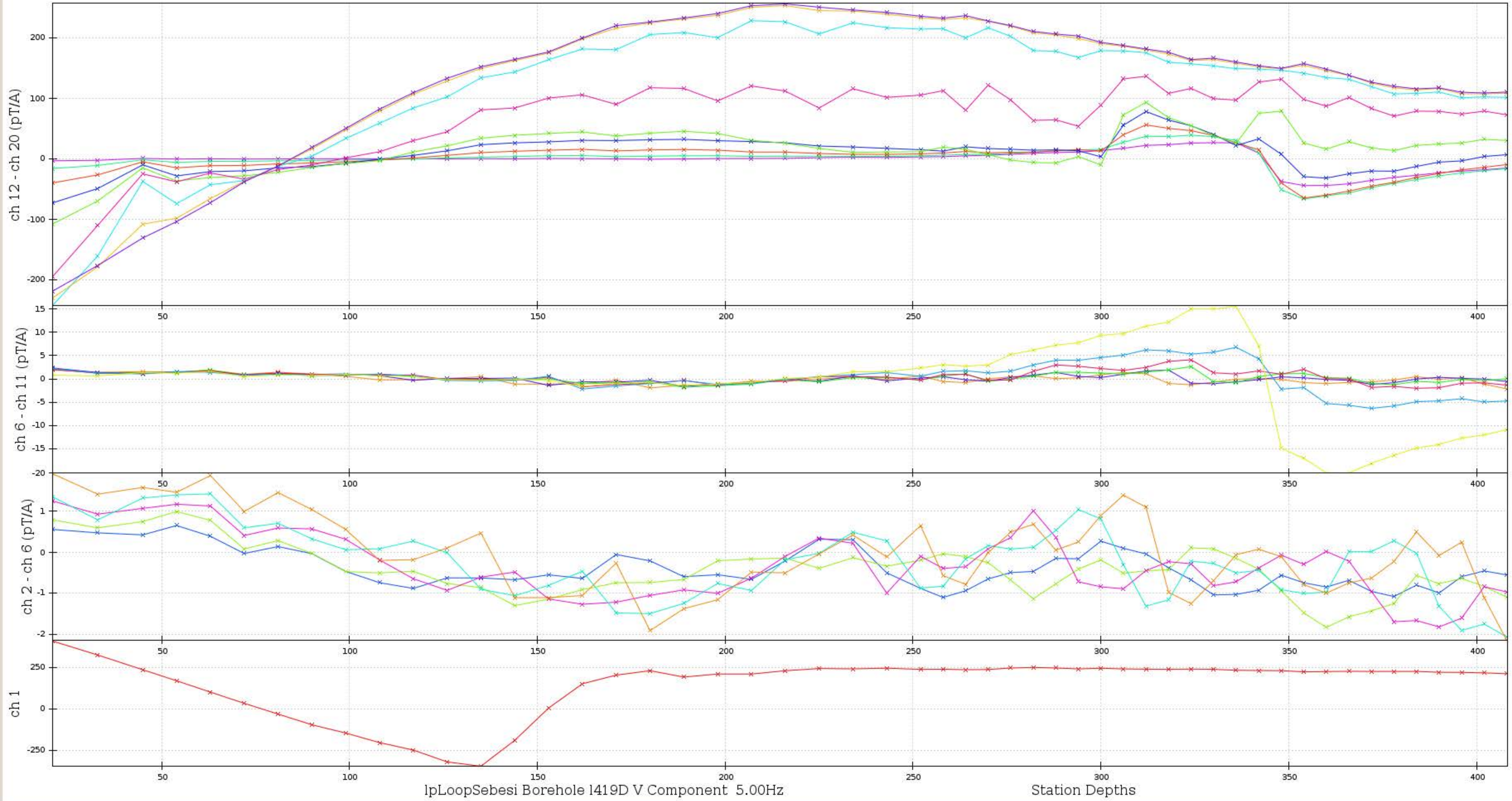
ch 1 := (channel - HSENSOR)/abs(1) * 1.0 | ch 2 - ch 20 := (channel - REFERENCE)/abs(1) * 1.0



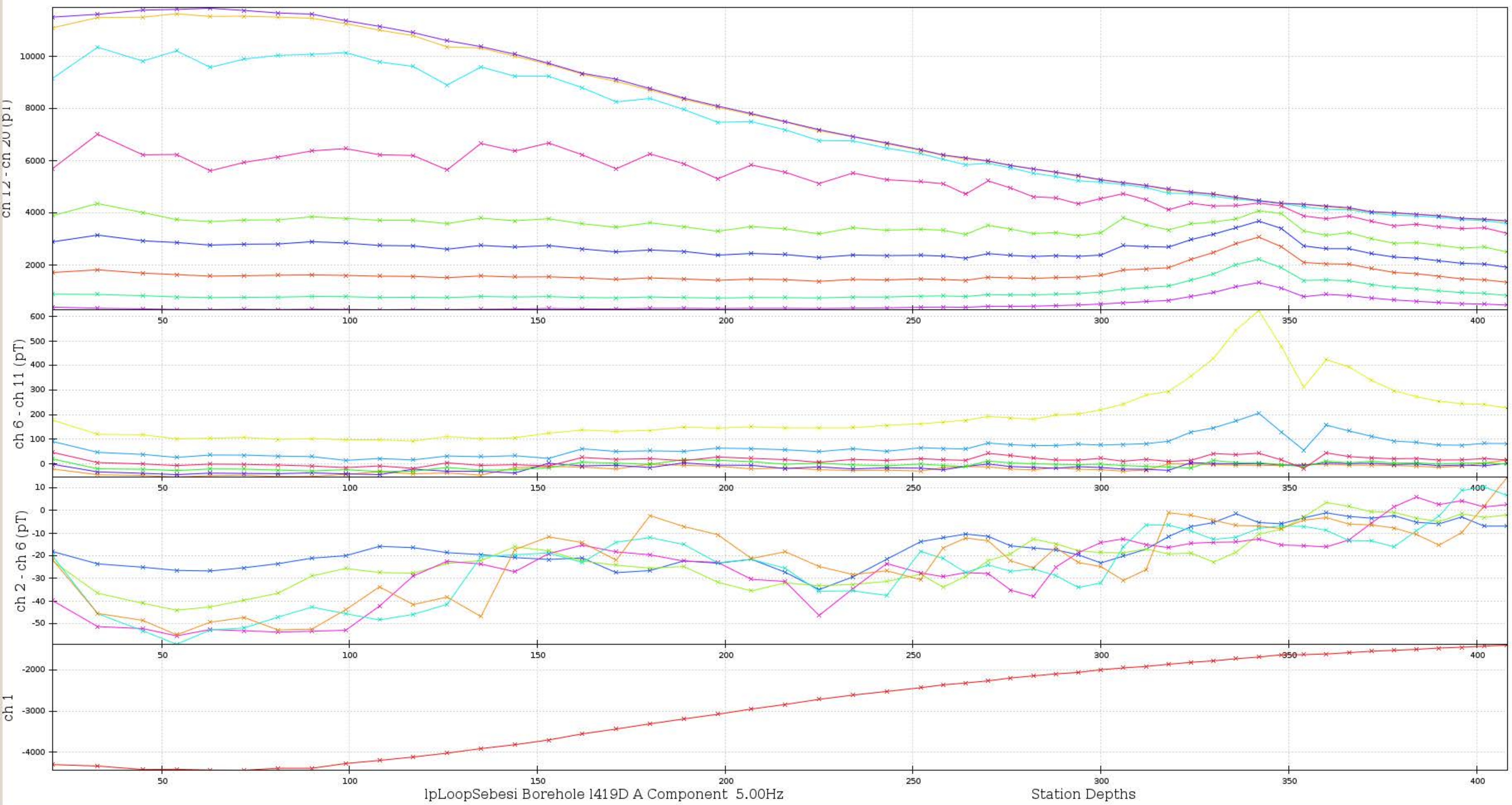
ch 1 := (channel - HSENSOR)/abs(1) * 1.0 | ch 2 - ch 20 := (channel - REFERENCE)/abs(1) * 1.0



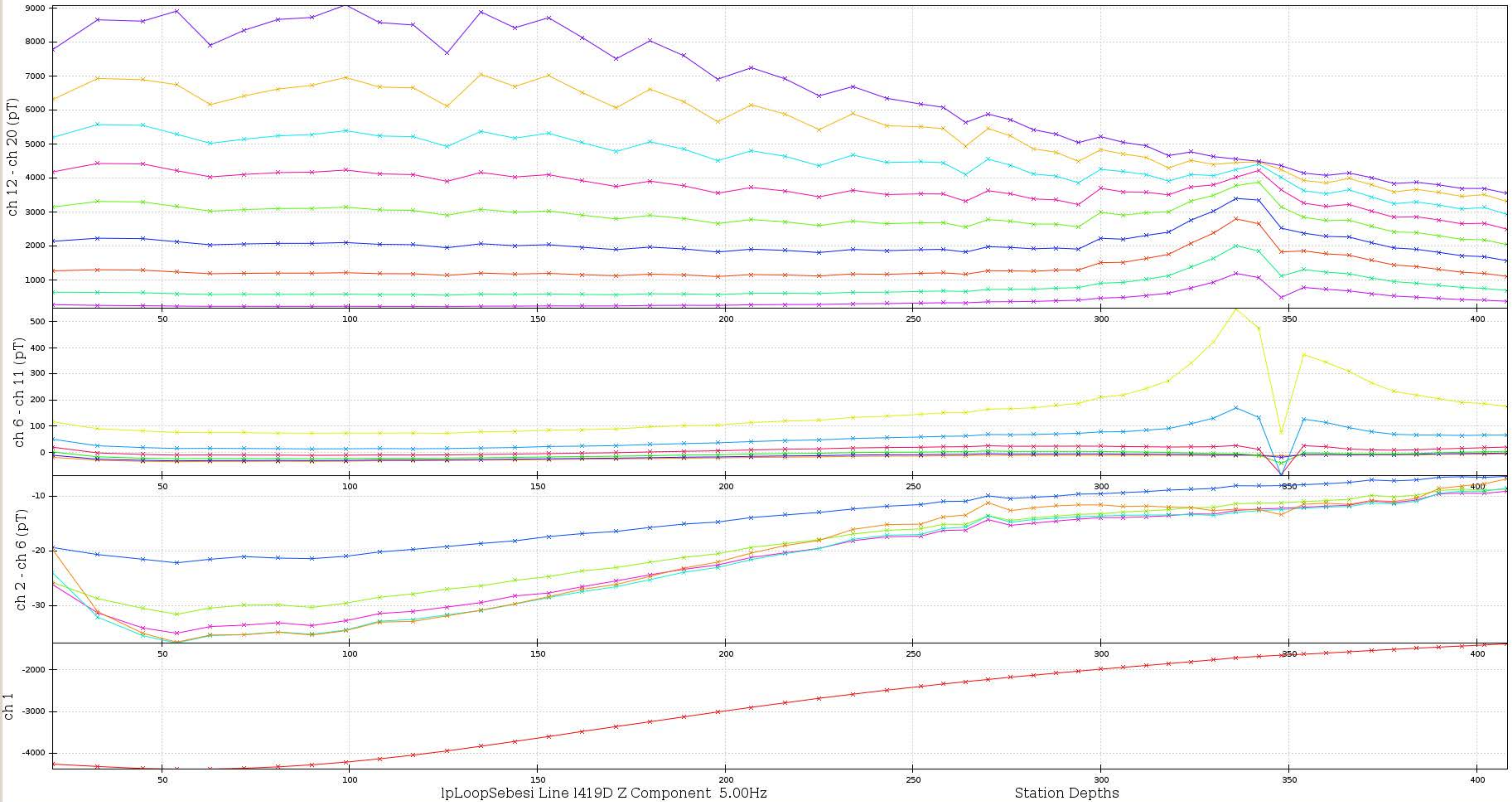
ch 1 := (channel - HSENSOR)/abs(1) * 1.0 | ch 2 - ch 20 := (channel - REFERENCE)/abs(1) * 1.0



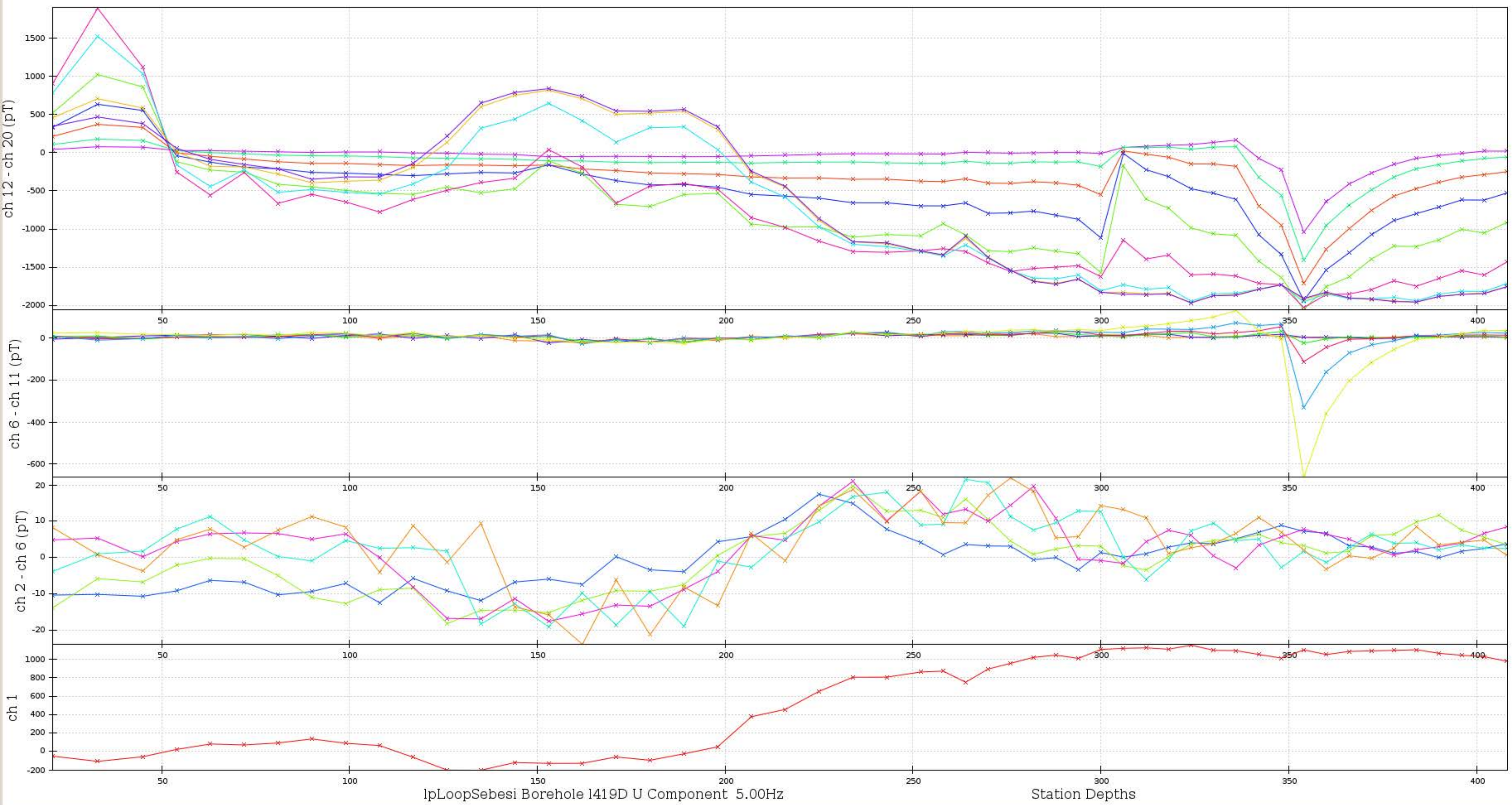
ch 1 := (channel - HSENSOR)/abs(1) * 1.0 | ch 2 - ch 20 := (channel - REFERENCE)/abs(1) * 1.0



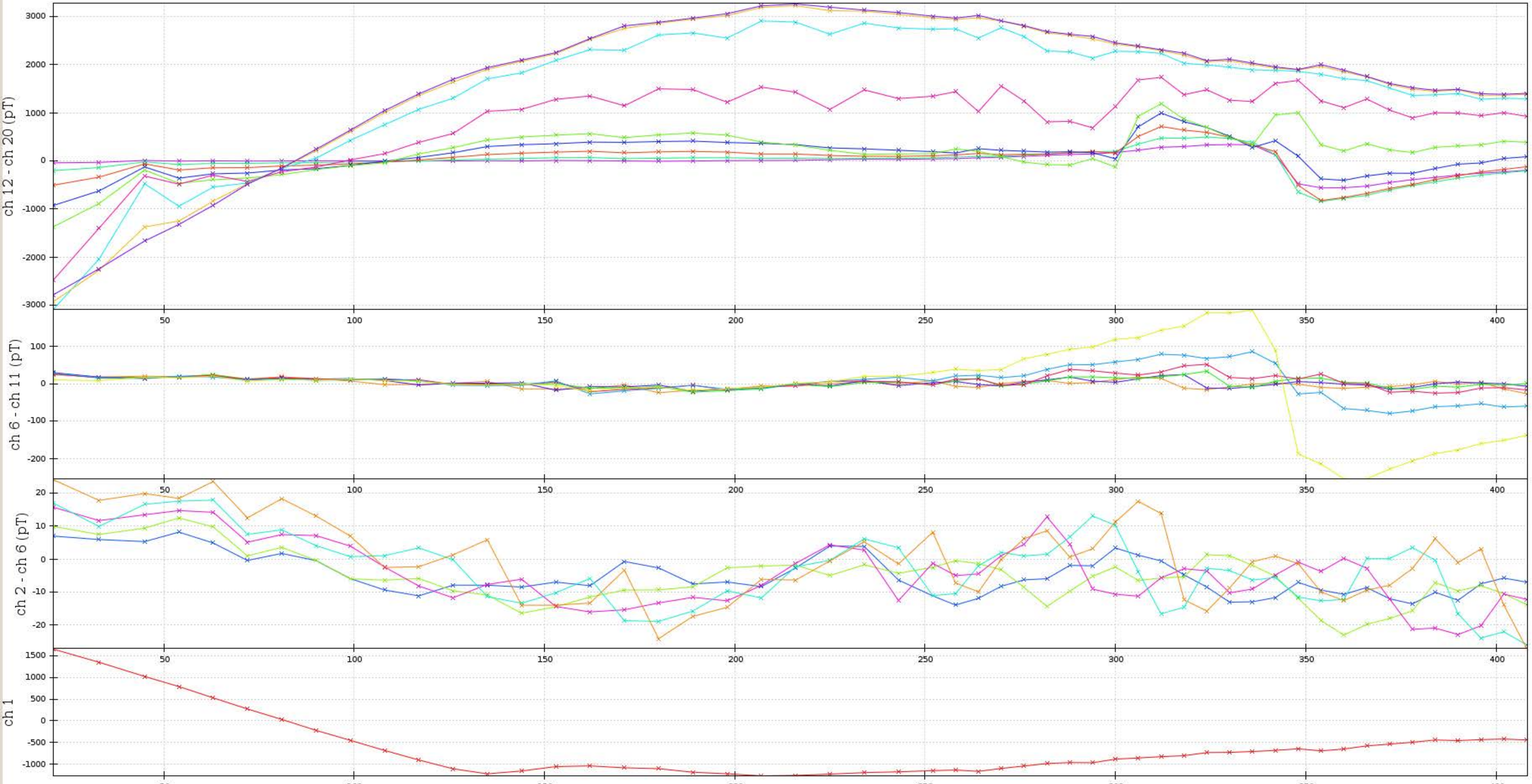
ch 1 := (channel - HSENSOR)/abs(1) * 1.0 | ch 2 - ch 20 := (channel - REFERENCE)/abs(1) * 1.0



ch 1 := (channel - HSENSOR)/abs(1) * 1.0 | ch 2 - ch 20 := (channel - REFERENCE)/abs(1) * 1.0



ch 1 := (channel - HSENSOR)/abs(1) * 1.0 | ch 2 - ch 20 := (channel - REFERENCE)/abs(1) * 1.0



lpLoopSebesi Borehole l419D V Component 5.00Hz

Station Depths