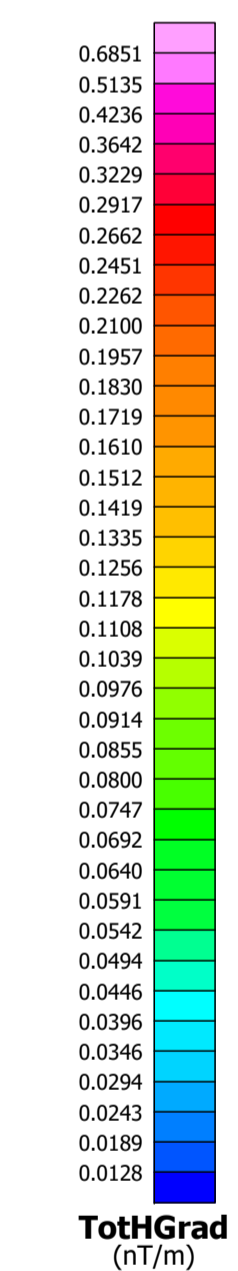
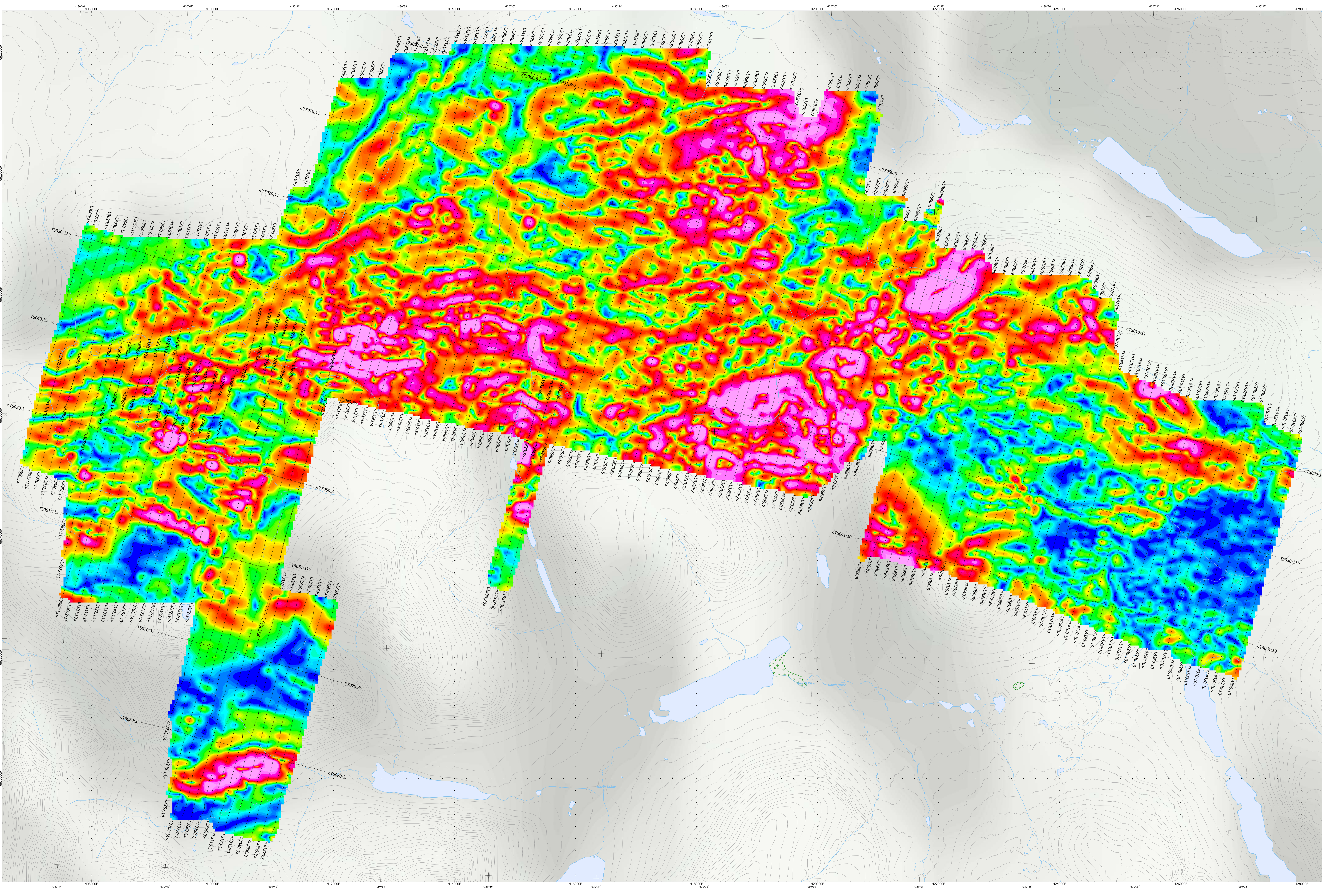




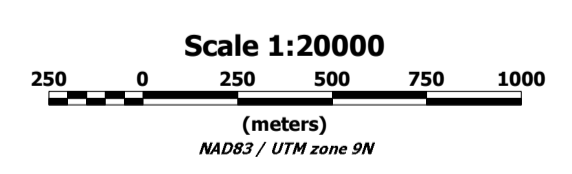
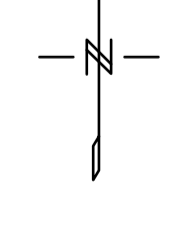
SURVEY SPECIFICATIONS:
Survey Date: April 23rd - July 31st, 2016
Survey Base: K2K Camp, Yukon
Aircraft: Aerospaciale A-star 350 B3 C/GTN / C-FVTM
Survey Line Spacing: 150 metres
Survey Line Direction: N 12° E / N 155° E
Tie Line Spacing: 1500 metres
Tie Line Direction: N 105° E / N 285° E
Average Aircraft Terrain Clearance: 83 metres
EM Transmitter Loop: Towed at an average terrain clearance of 31 metres below the helicopter
2 Magnetic Sensors: Towed at an average terrain clearance of 21 metres below the helicopter

INSTRUMENTS:
Geotech Time Domain Electromagnetic System (VTEM)
Concentric Sixix Geometry
X-Coil Diameter 6.2m
Z-Coil Diameter 1.2m
Transmitter Loop Diameter 26 Metres
Dipole Moment: 401,382 nA
Transmitter Waveform: Trapezoidal, Pulse Width 7.34 ms, Base Frequency 30 Hz
Geometrics High Sensitivity Cesium Magnetic Sensors
Magnetic Resolution: 0.02 nT @ 0.04s

MAP PROJECTION:
Datum: NAD83
Projection: Universal Transverse Mercator zone 9N
Central Meridian: 129°W
Central Scale Factor: 0.9996
False Easting/Northing: 500,000m/0m
Major Axis: 6378137
Inverse Flattening: 298.25722
NTS: 105607, 105608, 105609, 105610



TOPOGRAPHIC LEGEND:
Trails
Streams / Rivers
Contours
Lakes / Ponds
Wetlands



The topographic data base was derived from 1:50,000 NRC (Natural Resources Canada) NTDB data (www.geomatics.ca)
Background shading is derived from NASA SRTM30 PLUS (Shuttle Radar Topographic Mission) data (www.geomatics.com)
Inset data derived from Geocommunities 1:250,000 (www.geocomm.com)
and Natural Earth 1:10,000,000 database (www.naturalearthdata.com/downloads/10m/neo10m/)

**BMC Minerals (No.1) Ltd
Kudz Ze Kayah
Wolverine Lake, Yukon**

**Geotech VTEM System
Magnetic Total
Horizontal Gradient**

**Flown and processed by Geotech Ltd.
245 Industrial Parkway North,
Aurora, Ontario, Canada L4G 4C4
www.geotech.ca**

October 2016