

ARCHER, CATHRO & ASSOCIATES (1981) LIMITED
1016 - 510 West Hastings Street
Vancouver, B.C. V6B1L8

Telephone: 604-688-2568

Fax: 604-688-2578

ASSESSMENT REPORT

describing

GEOCHEMICAL SAMPLING

Field work performed on August 18, 2016

at the

TJ PROPERTY

TJ 1-24 YF47101-YF47124

NTS 115J/09

Latitude 62°37'N; Longitude 138°14'W

located in the

Whitehorse Mining District
Yukon Territory

prepared by

Archer, Cathro & Associates (1981) Limited

for

STRATEGIC METALS LTD.

by

K. Willms, B.Sc.

November 2016

CONTENTS

INTRODUCTION	1
PROPERTY LOCATION, CLAIM DATA AND ACCESS	1
HISTORY AND PREVIOUS WORK	1
GEOMORPHOLOGY AND CLIMATE	2
REGIONAL GEOLOGY	3
PROPERTY GEOLOGY	4
SOIL GEOCHEMISTRY	4
DISCUSSION AND CONCLUSIONS	5
REFERENCES	6

APPENDICES

I	STATEMENT OF QUALIFICATIONS
II	STATEMENT OF EXPENDITURES
III	CERTIFICATES OF ANALYSIS

FIGURES

<u>No.</u>	<u>Description</u>	<u>Follows Page</u>
1	Property Location	1
2	Claim Locations	1
3	Tectonic Setting	3
4	Geology	3
5	Sample Locations	4
6	Gold Geochemistry	4
7	Arsenic Geochemistry	4
8	Antimony Geochemistry	4

TABLES

I	Lithological Units	3
II	Soil Geochemical Thresholds	4

INTRODUCTION

The TJ property is located within the central part of the Dawson Range Gold Belt of western Yukon. The property covers a drainage that has produced anomalous gold values. The property is wholly owned by Strategic Metals Ltd.

This report describes geochemical sampling performed on August 18, 2016 by Archer, Cathro & Associates (1981) Limited on behalf of Strategic Metals. The author interpreted results from current and previous work completed on the property. His Statement of Qualifications is in Appendix I and a Statement of Expenditures appears in Appendix II.

PROPERTY LOCATION, CLAIM DATA AND ACCESS

The TJ property consists of 24 contiguous mineral claims, which are located on NTS map sheet 115J/09 at latitude 62°37' north and longitude 138°14' west (Figure 1). The property covers an area of approximately 482 ha (4.82 sq km). The claims are registered with the Whitehorse Mining Recorder in the name of Archer Cathro, which holds them in trust for Strategic Metals. Specifics concerning claim registration are found below, while the locations of individual claims are shown on Figure 2.

<u>Claim Name</u>	<u>Grant Number</u>	<u>Expiry Date*</u>
TJ 1-24	YF47101-YF47124	August 3, 2017

* Expiry dates do not include 2016 work which has not yet been filed for assessment credit.

Access to and from the property was provided by a Bell 206B helicopter operated by Capital Helicopters (1995) Inc. from the road accessible Klaza Property, owned by Rockhaven Resources Ltd. The TJ property is located 75 km northwest of the Klaza property, which is situated 70 km from the community of Carmacks via road. The community of Pelly Crossing lies 88 km to the northeast.

The TJ property is within the traditional territories of the Selkirk First Nation, which has concluded land claim agreements with Canada and Yukon. The property adjoins Class A lands belonging to the Selkirk First Nation (Figure 2).

HISTORY AND PREVIOUS WORK

In 1974, Archer Cathro conducted regional exploration in the Dawson Range district, including the area now covered by the TJ property, for the Klotassin Joint Venture (KJV). KJV was made up of Newconex Canadian Exploration Ltd., Marietta Resources International Ltd., and Molybdenum Corporation of America. The regional work consisted of reconnaissance-style prospecting, mapping and soil sampling. A total of 15 soil samples collected from the area of the property in 1974 yielded background values for copper, lead and molybdenum, and weakly anomalous values for zinc (up to 108 ppm). Two stream sediment samples were also collected that returned up to 21 ppm copper, 18 ppm lead, 92 ppm zinc and below detection limit molybdenum (Cathro, 1974).

STRATEGIC METALS LTD.

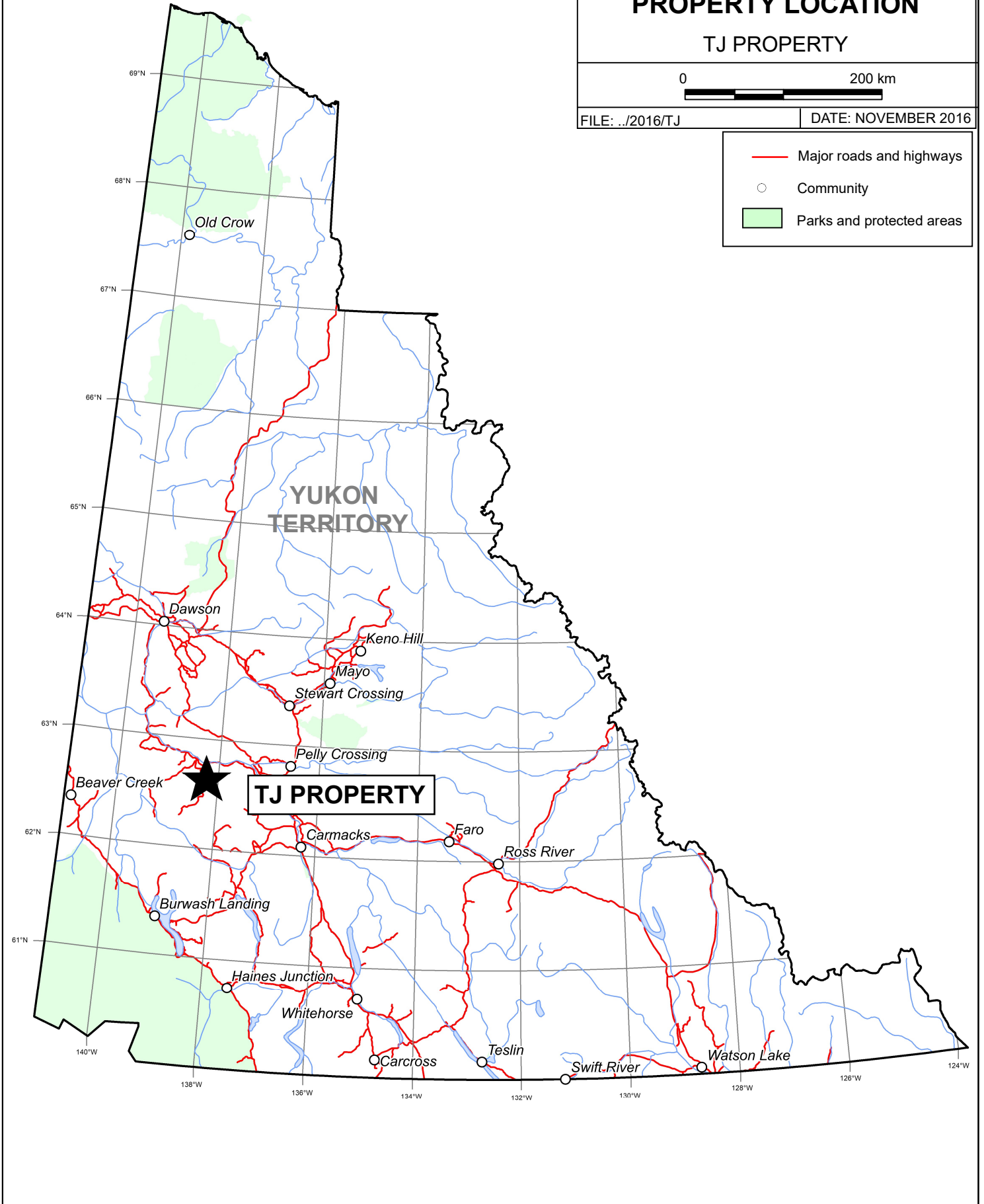
FIGURE 1
ARCHER, CATHRO & ASSOCIATES (1981) LIMITED
PROPERTY LOCATION
TJ PROPERTY

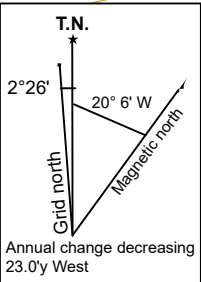
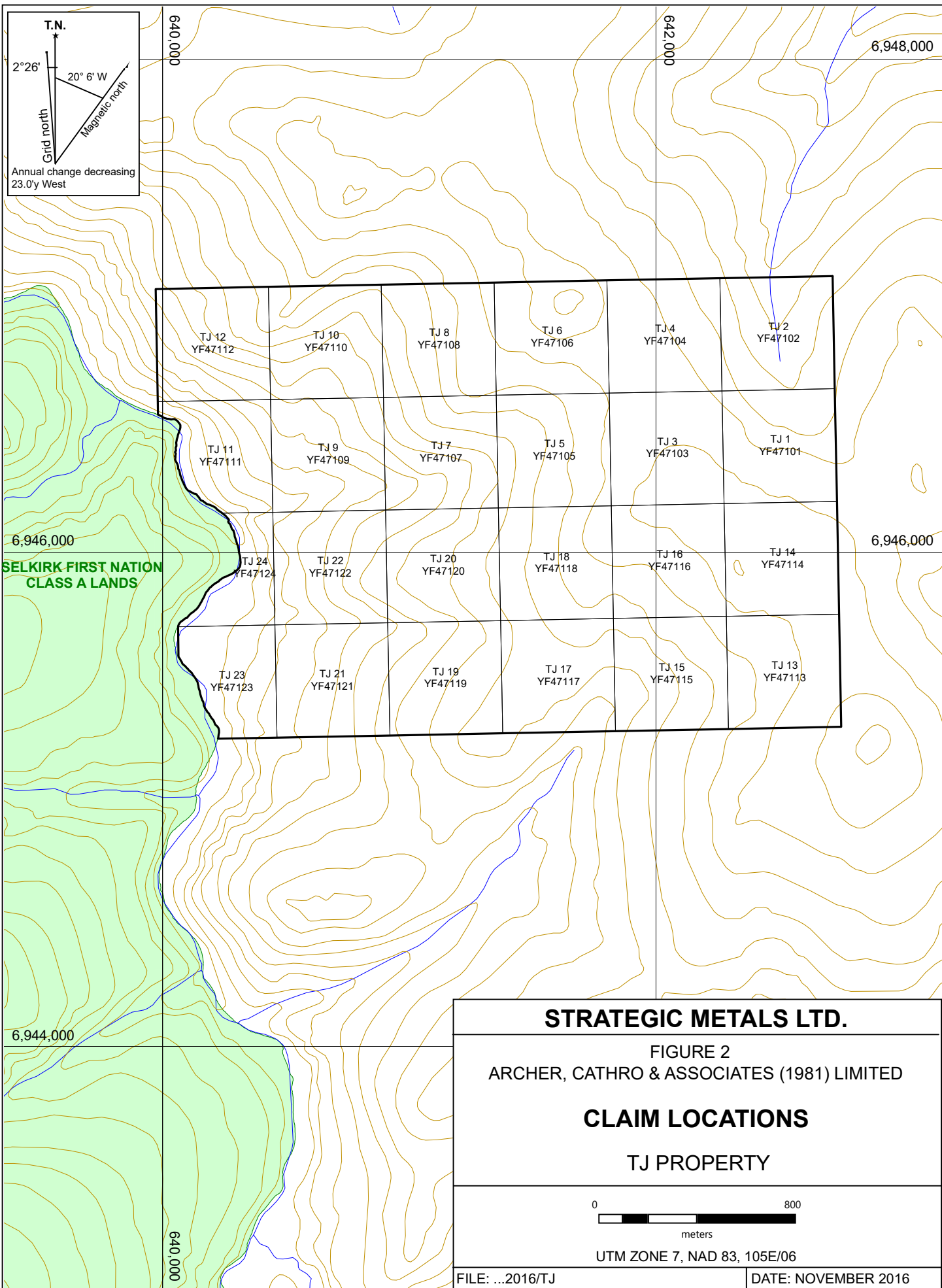


FILE: ../2016/TJ

DATE: NOVEMBER 2016

- Major roads and highways
- Community
- Parks and protected areas





TJ 12 YF47112	TJ 10 YF47110	TJ 8 YF47108	TJ 6 YF47106	TJ 4 YF47104	TJ 2 YF47102
TJ 11 YF47111	TJ 9 YF47109	TJ 7 YF47107	TJ 5 YF47105	TJ 3 YF47103	TJ 1 YF47101
TJ 24 YF47124	TJ 22 YF47122	TJ 20 YF47120	TJ 18 YF47118	TJ 16 YF47116	TJ 14 YF47114
TJ 23 YF47123	TJ 21 YF47121	TJ 19 YF47119	TJ 17 YF47117	TJ 15 YF47115	TJ 13 YF47113

**SELKIRK FIRST NATION
CLASS A LANDS**

STRATEGIC METALS LTD.

FIGURE 2
ARCHER, CATHRO & ASSOCIATES (1981) LIMITED

CLAIM LOCATIONS

TJ PROPERTY

0 800
meters

UTM ZONE 7, NAD 83, 105E/06

FILE: ...2016/TJ DATE: NOVEMBER 2016

In 1980, Archer Cathro did work in the Dawson Range as part of the NAT Joint Venture (NAT JV), which comprised Chevron Canada Limited and Armco Mineral Exploration Ltd. Part of the NAT JV program involved reanalyses of over 5000 previously collected geochemical sample splits for gold, silver, arsenic and lead. None of the soil samples collected from the TJ property were reanalyzed; however, sample splits from the stream sediment samples mentioned above yielded 96 ppb gold and less than 5 ppb gold, respectively. Both samples returned less than 0.4 g/t silver, 25 ppm lead and 10 ppm arsenic (Archer and Onasick, 1980).

In 1986, the Geological Survey of Canada (GSC) conducted a low-density stream sediment and water sampling survey on NTS map sheet 115J (Friske et al., 1986). Although this survey encompassed the TJ area, none of the creeks draining the property were sampled. A sample taken about 250 m west of the property in an area underlain by the same geological suite as that seen at the TJ property returned 99th percentile gold (60 ppb). The anomalous sample now lies within the adjacent First Nations settlement land.

The Yukon Minfile map for NTS sheet 115J shows historical placer gold workings on the Selwyn River downstream from the TJ property. The placer work was performed in the late 1930s, but there is no published report of exploration or production activities from this area (Debicki, 1959).

Strategic Metals staked the JJJ claims in April 2010 to cover the gold-in-stream sediment anomaly discovered by NAT JV. Central Resources Corp. signed an optional purchase agreement with Strategic Metals in June 2010.

In 2010, Archer Cathro completed a one day soil sampling program on behalf of Central Resources. A total of 84 contour soil samples were collected, returning anomalous gold values up to 209 ppb (Smith, 2010).

Central Resources exercised its option on the JJJ claims in 2012, and the claims were allowed to expire without further work.

In 2016, Strategic Metals staked the TJ claims over the former JJJ claim area.

GEOMORPHOLOGY AND CLIMATE

The TJ property is situated in the central part of the Dawson Range along the eastern bank of the Selwyn River. Creeks on the property flow directly into the Selwyn River, which is part of the Yukon River watershed.

The property covers a moderately steep west facing slope and a broad north trending ridgeline. Elevations range from approximately 850 to 1310 m above sea level. Outcrop is rare and is generally restricted to the ridgetop. Most of the property lies below treeline, and vegetation consists of poplar and spruce trees with an understory of buckbrush, moss and Labrador tea. Permafrost is prevalent where moss and organic matter exceed 50 cm thickness. The area escaped Pleistocene glaciation and as a result the landscape is mature with dendritic drainages forming radial fans off the flanks of elevated ridges (Duk-Rodkin, 1999).

Climate is typical of northern continental regions with long, cold winters, truncated fall and spring seasons and short, mild summers. The property is mostly snow free from late May to October.

REGIONAL GEOLOGY

The TJ property is located within the Yukon-Tanana Terrane (YTT) as shown on Figure 3. The YTT comprises a variety of Proterozoic and Paleozoic metavolcanic, metasedimentary and metaplutonic rocks formed in arc and back-arc environments (Colpron et al., 2006; Piercey et al., 2006). This terrane represents a continental arc that developed along the ancient Pacific margin of North America from Late Devonian to Permian.

The Yukon Geological Survey (YGS) maintains a website illustrating regional geology, based on mapping done by the Geological Survey of Canada and YGS, recent thesis work and a comprehensive compilation prepared by Gordey and Makepeace in 2003. This interactive map is periodically updated when new information becomes available (YGS, 2016). The main lithological units are described below in Table I, while regional geology is shown on Figure 4.

Table I – Lithological Units (after Gordey and Makepeace, 2003)

Unit Name	Age	Map Name	Description
Snowcap Assemblage	Upper Devonian	PDS1	Polydeformed and metamorphosed quartzite, psammite, pelite and marble; minor greenstone and amphibolite.
Rhyolite Creek	Paleocene to Eocene	PRC2	Maroon to reddish purple (weathered and fresh), fine to very coarse grained andesite, breccia with clasts of feldspar-rich andesite in a matrix of the same composition; locally includes feldspar porphyry dykes of andesitic composition.
Whitehorse Suite	Early Cretaceous	mKgW	biotite-hornblende granodiorite, hornblende quartz diorite and hornblende diorite; leucocratic, biotite hornblende granodiorite locally with sparse grey and pink potassium feldspar phenocrysts
Sulphur Creek	Late Permian	PqS	Variably foliated, K-feldspar augen granite, metaporphry; coarse-grained, homogenous, hornblende-biotite-bearing granite.

Regional-scale mapping shows the TJ property is underlain entirely by Early Cretaceous Whitehorse Suite granodiorite. The Big Creek Fault, a regional-scale structure, crosses through the southwestern corner of the property.

To the south of the property, the Big Creek Fault juxtaposes Whitehorse Suite rocks with an elongated body of Sulphur Creek granite that is overlain by Snowcap Assemblage metasediments. Near the southern contact of the Sulphur Creek intrusion, a north-northwesterly trending Rhyolite Creek dyke is mapped.

STRATEGIC METALS LTD.

FIGURE 3

ARCHER, CATHRO & ASSOCIATES (1981) LIMITED

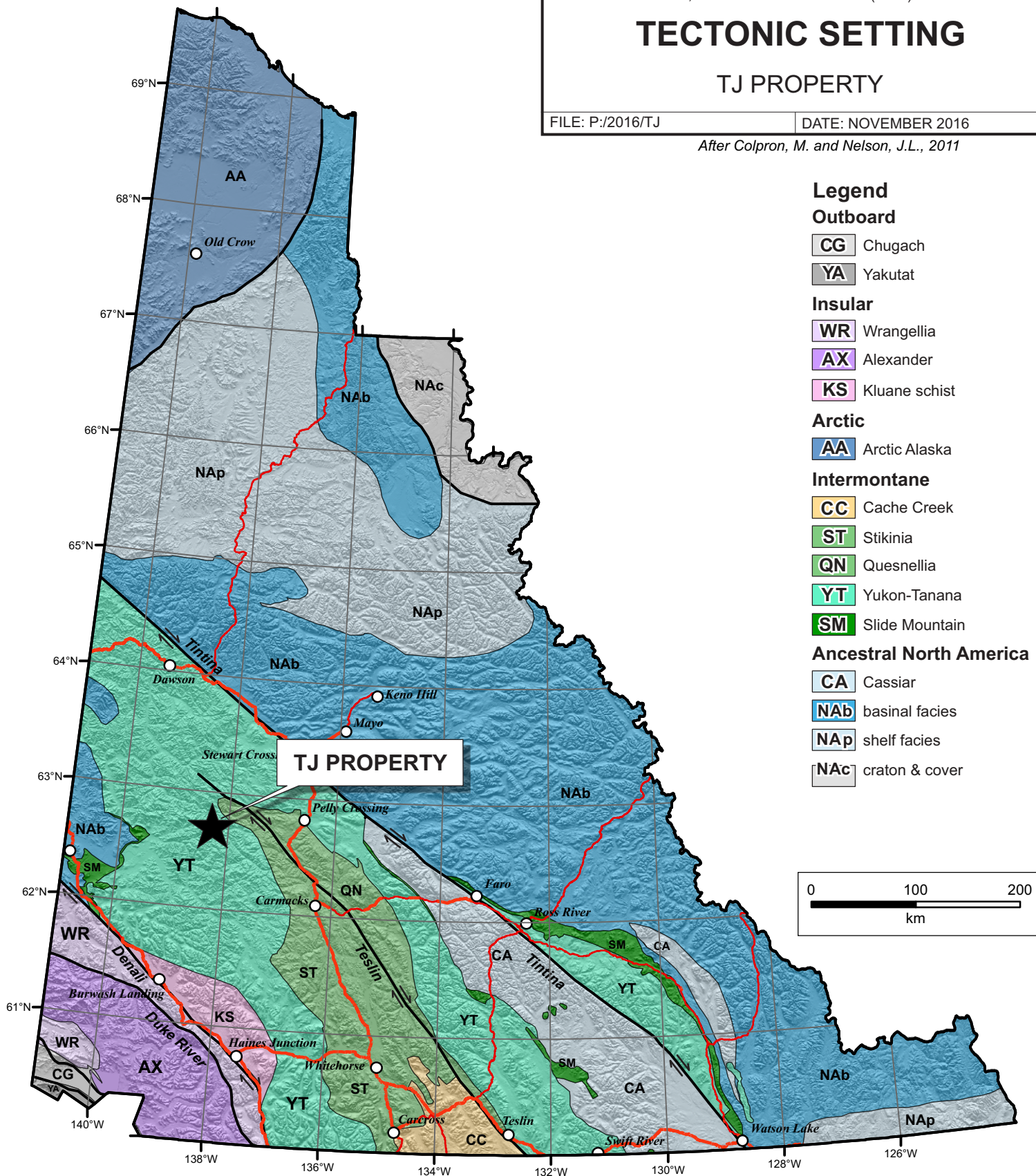
TECTONIC SETTING

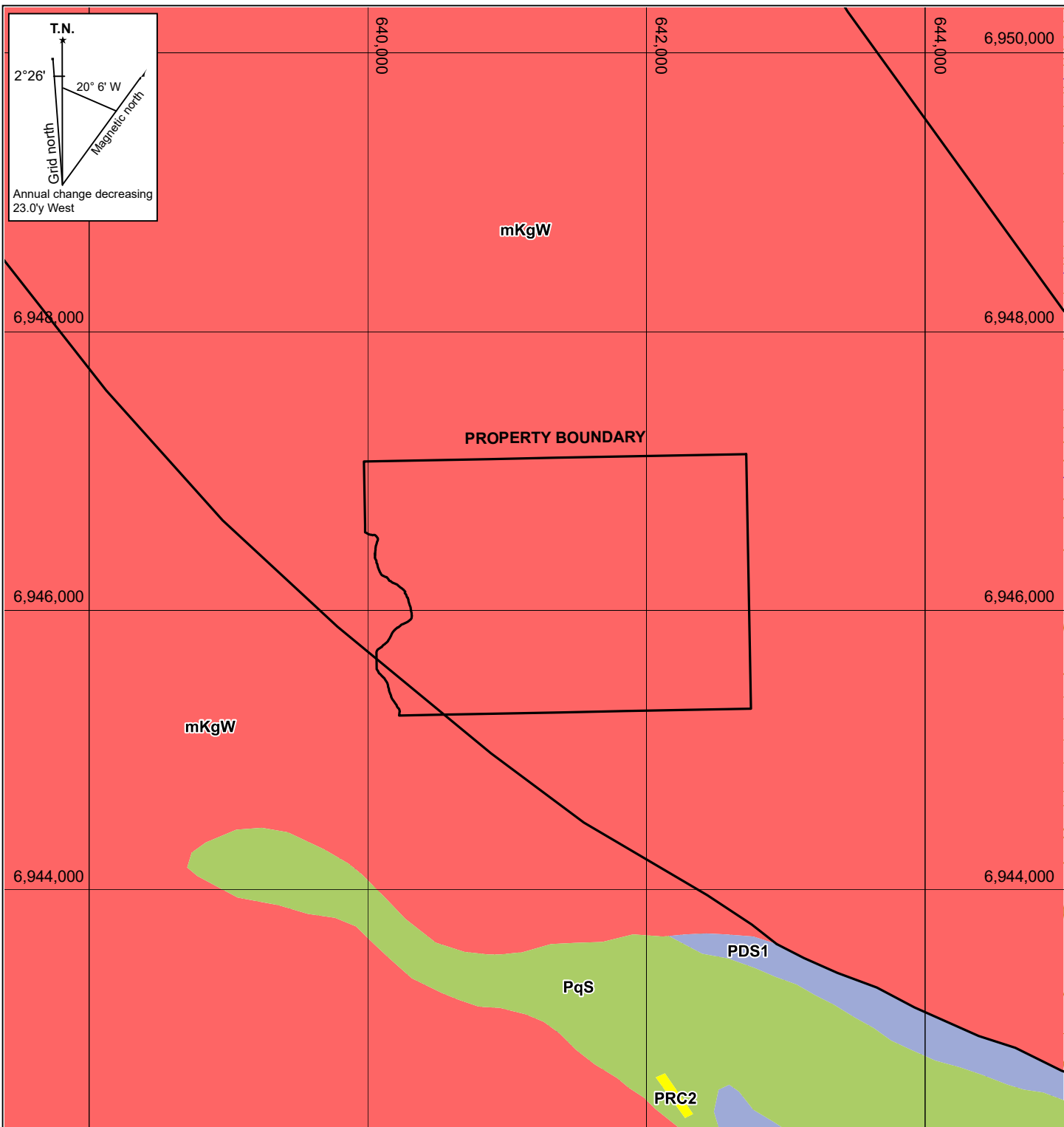
TJ PROPERTY

FILE: P:/2016/TJ


DATE: NOVEMBER 2016

After Colpron, M. and Nelson, J.L., 2011







CENOZOIC

 PRC2: RHYOLITE CREEK: Maroon to reddish purple, fine to coarse-grained andesite, breccia with clasts of feldspar-rich andesite in a matrix of the same composition; locally includes feldspar porphyry dykes of andesitic composition


MESOZOIC

 mKgW: WHITEHORSE SUITE: biotite-hornblende granodiorite, hornblende quartz diorite and hornblende diorite leucocratic, biotite hornblende granodiorite locally with sparse grey and pink potassium feldspar phenocrysts

PALEOZOIC TO NEOPROTEROZOIC

 PDS1: SNOWCAP ASSELBLAGE: Polydeformed and metamorphosed quartzite, psammite, pelite and marble; minor greenstone and amphibolite

PALEOZOIC

 PqS: SULPHUR CREEK: Variably foliated, K-feldspar augen granite, metaporphry; coarse-grained, homogeneous, hornblende-biotite-bearing granite


 Fault

STRATEGIC METALS LTD.

FIGURE 4
ARCHER, CATHRO & ASSOCIATES (1981) LIMITED

REGIONAL GEOLOGY

TJ PROPERTY


 0 2
 kilometers

UTM ZONE 7, NAD 83, 105E/06

FILE: ...2016/TJ DATE: NOVEMBER 2016

PROPERTY GEOLOGY

No detailed geological mapping has been done on the TJ property. Based on published data discussed in the previous section, all exposures on the property are assigned to the Whitehorse Suite. During the 2010 soil sampling program, a fault was inferred in the northeastern part of the property.

There is no documented mineralization on the TJ property.

SOIL GEOCHEMISTRY

In 2016, Strategic Metals conducted a one day soil geochemical survey, collecting 149 grid soil samples. Figure 5 shows 2016 soil sample locations, while thematic results for gold, arsenic and antimony from 2016 samples are illustrated on Figures 6 to 8, along with historical results.

Soil samples were collected at 50 m spacing along grid lines approximately 100 m apart. Hand-held augers were used to collect samples, while locations were recorded using hand-held GPS units. Sample sites are marked by aluminum tags inscribed with the sample numbers and affixed to 0.5 m wooden lath. Upon collection, samples were placed into individually pre-numbered Kraft paper bags. All samples were sent to ALS Minerals in North Vancouver, B.C., where they were dried, screened to -180 microns, and then analysed for 35 elements using the inductively coupled plasma-atomic emission spectroscopy technique (ME-ICP41). An additional 30 g charge was further analysed for gold by fire assay with inductively coupled plasma-atomic emissions spectroscopy finish (Au-ICP21). Certificates of Analysis appear in Appendix III.

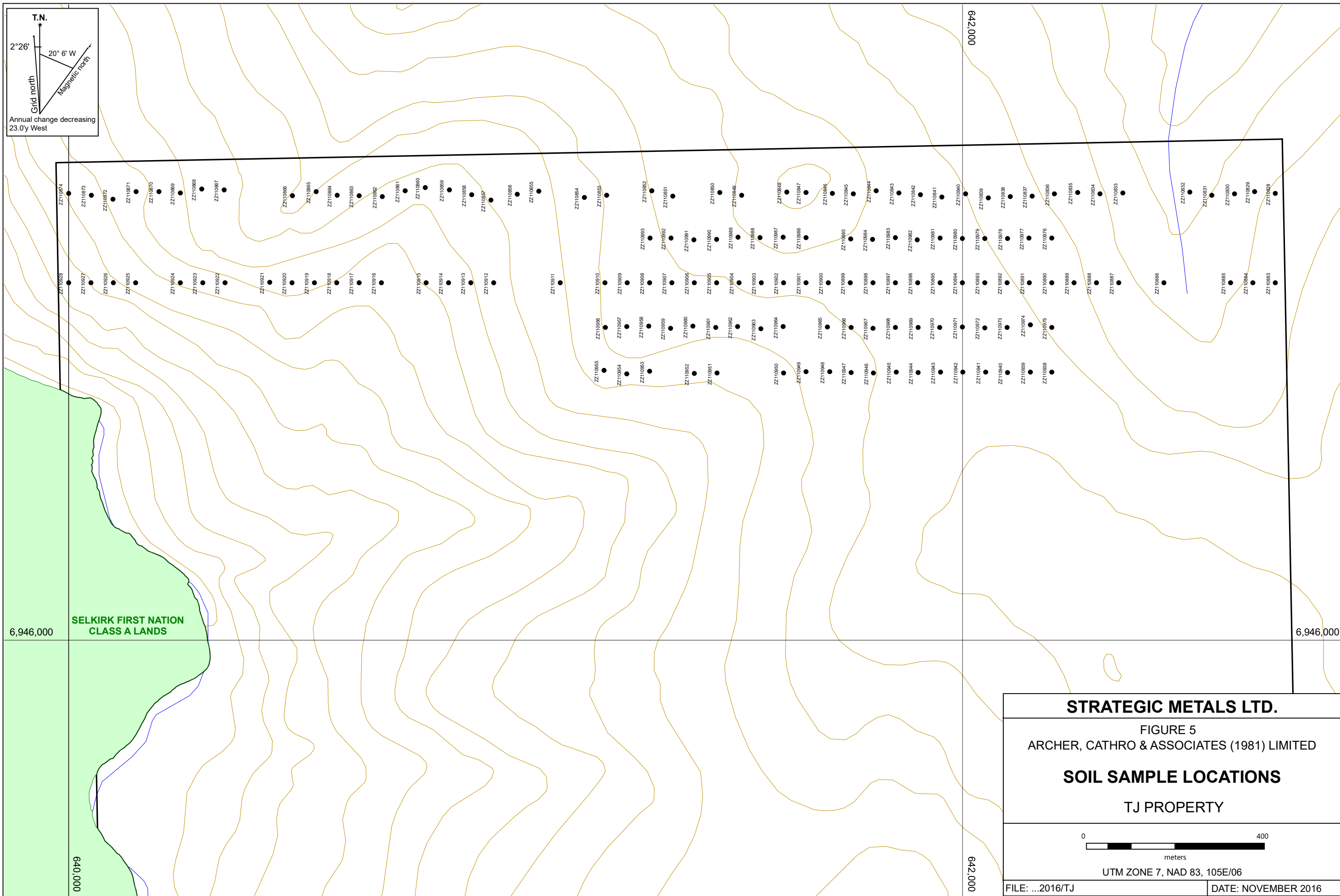
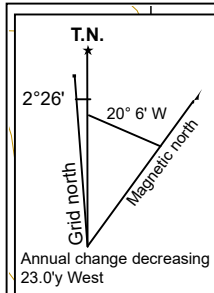
Anomalous thresholds and peak values for elements of interest are listed in Table II.

Table II – Soil Geochemical Thresholds

Element	Weak	Moderate	Strong	2016 Peak results	Historical Peak result
Gold (ppb)	$\geq 10 < 20$	$\geq 20 < 50$	$\geq 50 \leq 209$	20	209
Arsenic (ppm)	$\geq 10 < 50$	$\geq 50 < 100$	-	14	26
Antimony (ppm)	$\geq 2 < 10$	-	-	5	4

In 2016, soil sampling was conducted across the northern part of the property. The geochemical response was subdued with peak values of 20 ppb, 14 ppm arsenic and 5 ppm antimony.

A westerly-trending gold anomaly identified from soil and silt sampling completed in 2010 crosses the central part of the property. The linear follows an anomalous gully, which returned a silt value of 96 ppb gold, to the ridgeline where gold-in-soil values reached 76 and 209 ppb. The best gold result from 2016 lies alongside an elevated gold value found within the anomalous trend.

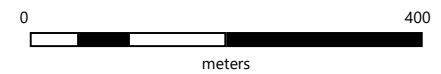


STRATEGIC METALS LTD.

FIGURE 5
ARCHER, CATHRO & ASSOCIATES (1981) LIMITED

SOIL SAMPLE LOCATIONS

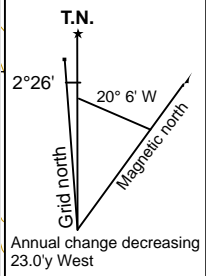
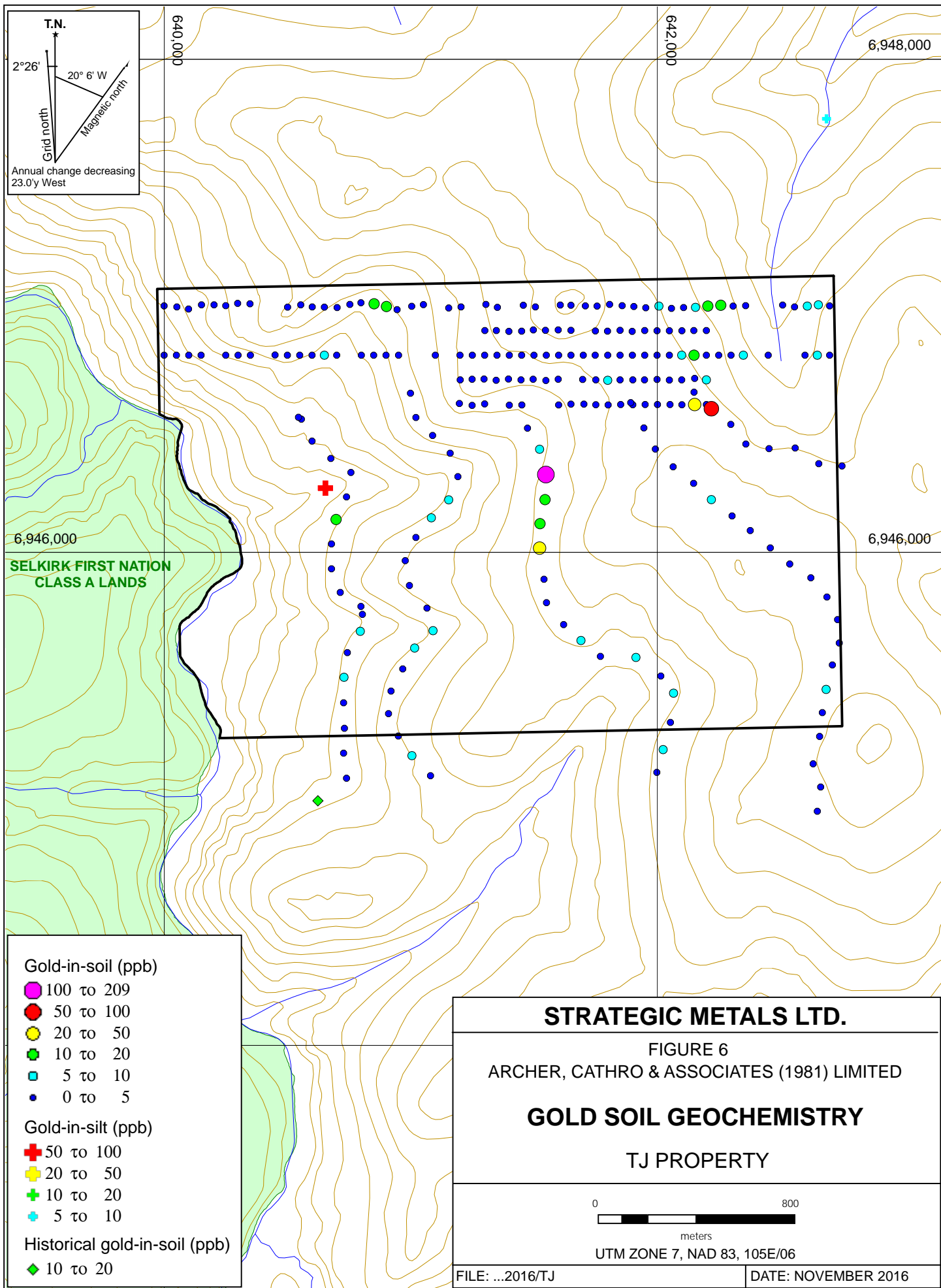
TJ PROPERTY



UTM ZONE 7, NAD 83, 105E/06

FILE: ...2016/TJ

DATE: NOVEMBER 2016



SELKIRK FIRST NATION
CLASS A LANDS

Gold-in-soil (ppb)

- 100 to 209
- 50 to 100
- 20 to 50
- 10 to 20
- 5 to 10
- 0 to 5

Gold-in-silt (ppb)

- ✚ 50 to 100
- ✚ 20 to 50
- ✚ 10 to 20
- ✚ 5 to 10

Historical gold-in-soil (ppb)

- ◆ 10 to 20

STRATEGIC METALS LTD.

FIGURE 6

ARCHER, CATHRO & ASSOCIATES (1981) LIMITED

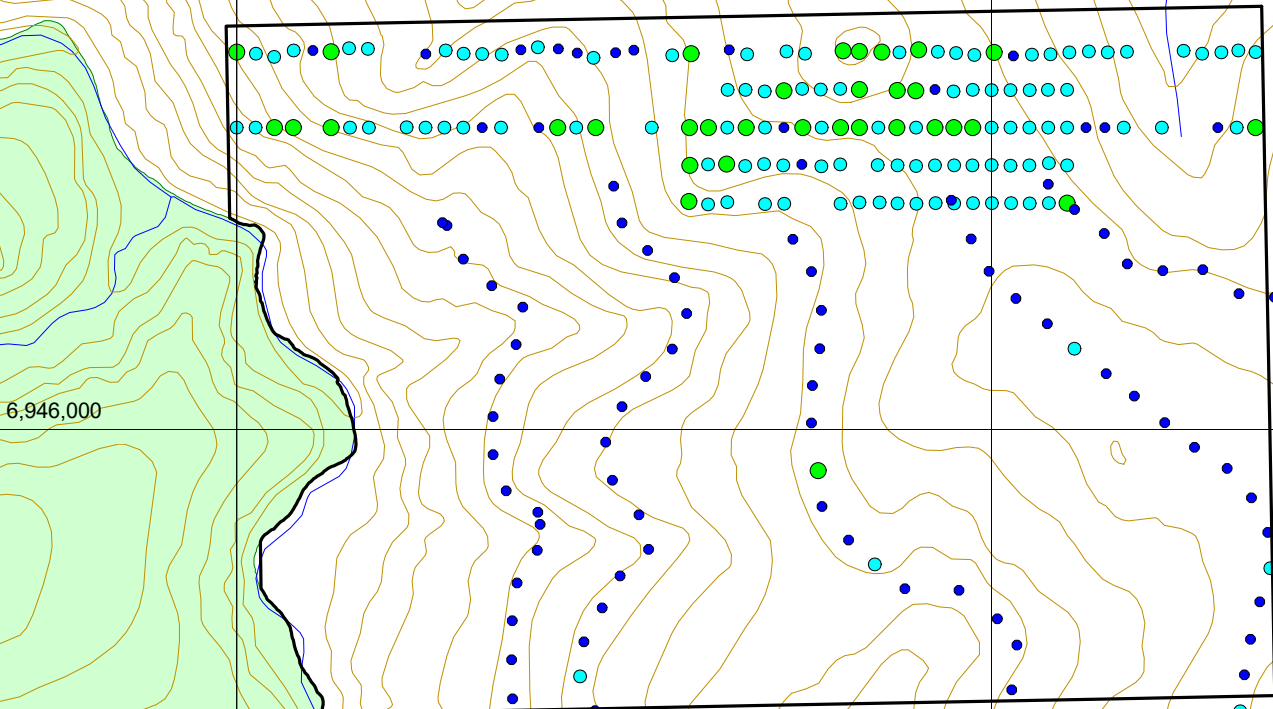
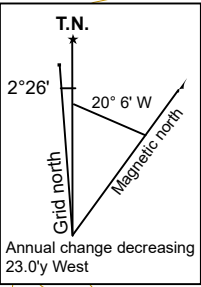
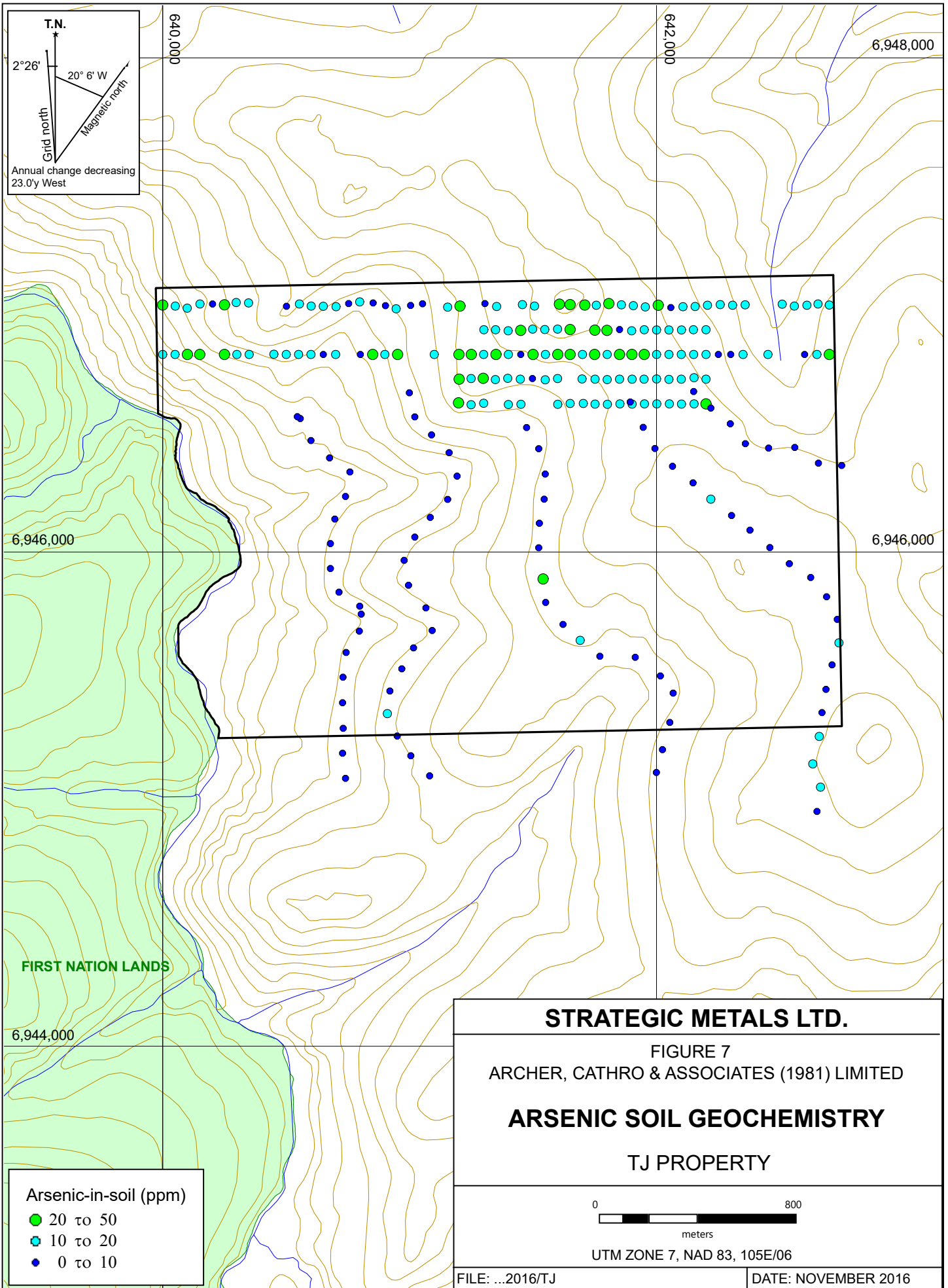
GOLD SOIL GEOCHEMISTRY

TJ PROPERTY

0 800
meters

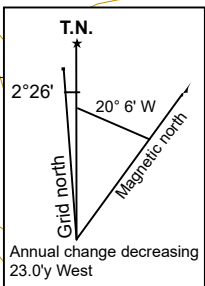
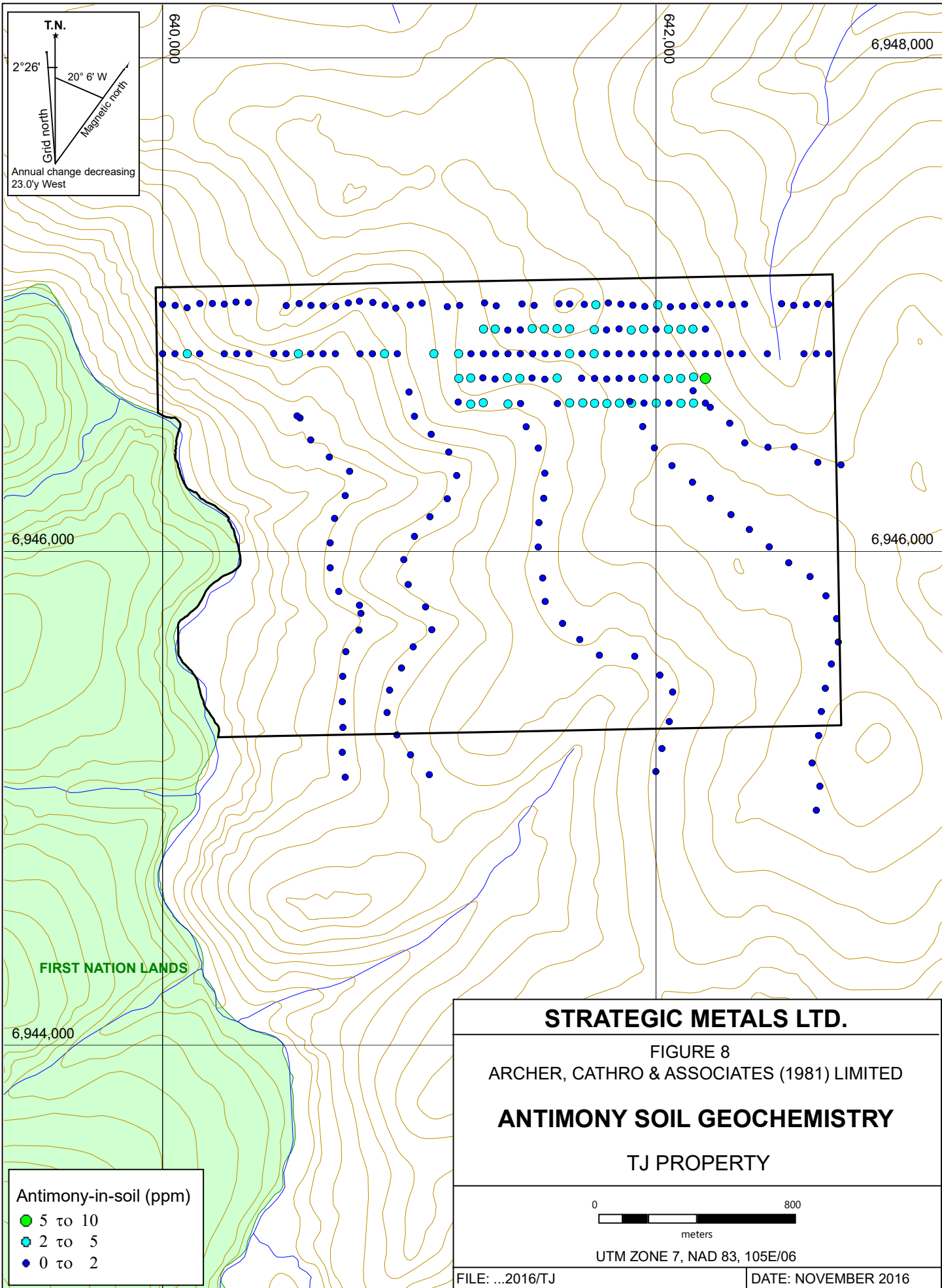
UTM ZONE 7, NAD 83, 105E/06

FILE: ...2016/TJ DATE: NOVEMBER 2016



FIRST NATION LANDS

- Arsenic-in-soil (ppm)**
- 20 to 50
 - 10 to 20
 - 0 to 10



6,946,000

6,946,000

6,944,000

FIRST NATION LANDS

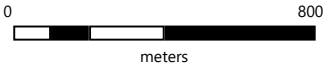
- Antimony-in-soil (ppm)
- 5 to 10
 - 2 to 5
 - 0 to 2

STRATEGIC METALS LTD.

FIGURE 8
ARCHER, CATHRO & ASSOCIATES (1981) LIMITED

ANTIMONY SOIL GEOCHEMISTRY

TJ PROPERTY



UTM ZONE 7, NAD 83, 105E/06

FILE: ...2016/TJ

DATE: NOVEMBER 2016

A secondary 450 by 250 m north-trending gold anomaly splays off of the main anomaly, trending north near the ridgeline. Elevated gold values up to 18 ppb occur along the anomaly. The elevated gold values have little to no association with other elements of interest.

DISCUSSION AND CONCLUSIONS

The TJ property is located in the Dawson Range Gold Belt, which hosts a number of precious metal deposits and promising projects, such as Goldcorp Inc.'s Coffee project, Western Copper and Gold Corp.'s Casino project and Rockhaven Resources' Klaza project.

Work completed by Strategic Metals during the 2016 exploration program expanded and tightened geochemical coverage on the property. This work defined a weak northerly-trending gold target and supports an east-trending gold anomaly identified by previous sampling.

Soil geochemical response across the property is generally subdued, except for gold. Compilation of current and historical data does not indicate any definitive association between gold and other elements of interest.

Additional exploration at the TJ property should consist of additional closely spaced soil sampling to expand geochemical coverage across the central part of the property. Detailed mapping and prospecting on the TJ property should be deferred until more defined anomalies are identified.

Respectfully submitted,

ARCHER, CATHRO & ASSOCIATES (1981) LIMITED

K. Willms, B.Sc.

REFERENCES

- Archer, A. R. and Onasick, E.P.
 1980 NAT Joint Venture Final Report. Internal report prepared by Archer, Cathro & Associates Ltd. for Chevron Canada Limited and Armc0 Mineral Exploration Ltd.
- Cathro, R.J.
 1974 Regional Exploration in the Dawson Range District, Yukon for Klotassin Joint Venture. Internal report prepared by Archer, Cathro & Associates Ltd.
- Colpron, M. and Nelson, J. L.
 2011 A digital atlas of terranes for the Northern Cordillera; Yukon Geological Survey and BC Geology Survey, BCGS GeoFile 2011-11
http://www.geology.gov.yk.ca/pdf/CanCord_terranes_2011.pdf
- Colpron, M., Nelson, J. L., and Murphy, D. C.
 2006 A tectonostratigraphic framework for the pericratonic terranes of the northern Cordillera, in Colpron, M., and Nelson, J. L., eds., Paleozoic Evolution and Metallogeny of Pericratonic Terranes at the Ancient Pacific Margin of North America, Canadian and Alaskan Cordillera: Special Paper 45, Geological Association of Canada, p. 1-23.
- Debicki, R.L.
 1959 Yukon Mineral Industry 1941 to 1959. Compiled and edited by R.L. Debicki.
- Duk-Rodkin, A.
 1999 Glacial limits map of Yukon Territory; Geological Survey of Canada Geoscience Map 1999-2.
- Friske, P.W.B., Hornbrook, E.H.W., Lynch, J.J., McCurdy, M.W., Gross, H., Galletta, A.C. and Durham, C.C.
 1986 Regional stream sediment and water geochemical reconnaissance data (115J); Geological Survey of Canada, Open File 1363.
- Gordey, S.P. and Makepeace, A.J. (compilers)
 2003 Yukon digital geology, version 2.0, Geological Survey of Canada, Open File 1749 and Yukon Geological Survey, Open File 2003-9 (D).
- Johnston, S.T.
 1995 Geological compilation with interpretation from geophysical surveys of the northern Dawson Range, Central Yukon (115J/9 & 10; 115I/12). For Exploration and Geological Services Division, Yukon, Indian and Northern Affairs Canada, Open 1995-2(G).

- Piercey, S. J., Nelson, J. L., Colpron, M., Dusel-Bacon, C., Roots, C. F., and Simard, R- L.,
2006 Paleozoic magmatism and crustal recycling along the ancient Pacific margin of
North America, northern Cordillera, in Colpron, M., and Nelson, J. L., eds.,
Paleozoic Evolution and Metallogeny of Pericratonic Terranes at the Ancient
Pacific Margin of North America, Canadian and Alaskan Cordillera: Special
Paper 45, Geological Association of Canada, p. 281-322.
- Smith, H.
2010 Assessment report describing geochemical sampling at the JJJ property;
Prepared for Strategic Metals Limited by Archer, Cathro & Associates (1981)
Limited.
- Yukon Geological Survey
2016 Yukon Digital Bedrock Geology.
http://www.geology.gov.yk.ca/update_yukon_bedrock_geology_map.html,
accessed: October 2016

APPENDIX I
STATEMENT OF QUALIFICATIONS

STATEMENT OF QUALIFICATIONS

I, Kelson Willms, geologist, with business addresses in Whitehorse, Yukon Territory and Vancouver, British Columbia and residential address in Vancouver, British Columbia, hereby certify that:

1. I graduated from the University of British Columbia in 2016 with a B.Sc. in Earth and Environmental Sciences.
2. From 2015 to present, I have been actively engaged in mineral exploration in the Yukon Territory and British Columbia.
3. I have interpreted all data resulting from work described in this report.

K. Willms, B.Sc.

APPENDIX II
STATEMENT OF EXPENDITURES

Statement of Expenditures
TJ 1-24 Mineral Claims
March 31, 2017

Labour

D. Eaton geologist – 3 hours August 3 to February 1 at \$120/hr	\$ 378.00
H. Burrell geologist – 3 hours August 3 to February 1 at \$106/hr	333.90
J. Morton geologist – 16 hours August 3 to February 1 at \$82/hr	1,377.60
M. Kulla field assistant – 8 hours August 3 to February 1 at \$51/hr	428.40
R. Burke field assistant – 8 hours August 3 to February 1 at \$49/hr	411.60
Q. Wilms field assistant – 8 hours August 3 to February 1 at \$45/hr	378.00
K. Willms geologist - 24.5 hours August 3 to February 1 at \$57/hr	1,466.33
L. Corbett expediting – 5 hours August 3 to February 1 at \$81/hr	425.25
L. Smith office – 20 hours August 3 to February 1 at \$69/hr	1,449.00
S. Newman office - 16 hours August 3 to February 1 at \$66/hr	<u>1,108.80</u>
	\$7,756.88

Expenses (including management)

Field room and board – 5 mandays at \$180/day	1,017.00
Trans North Helicopters 4 hours Bell 206 at \$990/hr plus fuel	5,041.61
ALS Chemex	<u>2,872.29</u>
	8,930.90
	<u>\$16,687.24</u>

APPENDIX III
CERTIFICATES OF ANALYSIS



ALS Canada Ltd.
 2103 Dollarton Hwy
 North Vancouver BC V7H 0A7
 Phone: +1 (604) 984 0221 Fax: +1 (604) 984 0218
 www.alsglobal.com

To: STRATEGIC METALS LTD.
 C/O ARCHER, CATHRO & ASSOCIATES (1981)
 LIMITED
 1016-510 W HASTINGS ST
 VANCOUVER BC V6B 1L8

Page: 1
 Total # Pages: 5 (A - C)
 Plus Appendix Pages
 Finalized Date: 23-SEP-2016
 Account: MTT

CERTIFICATE WH16139939

Project: TJ

This report is for 149 Soil samples submitted to our lab in Whitehorse, YT, Canada on 22-AUG-2016.

The following have access to data associated with this certificate:

HEATHER BURRELL	JOAN MARIACHER
-----------------	----------------

SAMPLE PREPARATION	
ALS CODE	DESCRIPTION
WEI-21	Received Sample Weight
LOG-22	Sample login - Rcd w/o BarCode
SCR-41	Screen to -180um and save both

ANALYTICAL PROCEDURES		
ALS CODE	DESCRIPTION	INSTRUMENT
Au-ICP21	Au 30g FA ICP-AES Finish	ICP-AES
ME-ICP41	35 Element Aqua Regia ICP-AES	ICP-AES

To: STRATEGIC METALS LTD.
 ATTN: JOAN MARIACHER
 C/O ARCHER, CATHRO & ASSOCIATES (1981) LIMITED
 1016-510 W HASTINGS ST
 VANCOUVER BC V6B 1L8

This is the Final Report and supersedes any preliminary report with this certificate number. Results apply to samples as submitted. All pages of this report have been checked and approved for release.

***** See Appendix Page for comments regarding this certificate *****

Signature: 
 Colin Ramshaw, Vancouver Laboratory Manager



ALS Canada Ltd.
 2103 Dollarton Hwy
 North Vancouver BC V7H 0A7
 Phone: +1 (604) 984 0221 Fax: +1 (604) 984 0218
 www.alsglobal.com

To: STRATEGIC METALS LTD.
 C/O ARCHER, CATHRO & ASSOCIATES (1981)
 LIMITED
 1016-510 W HASTINGS ST
 VANCOUVER BC V6B 1L8

Page: 2 - A
 Total # Pages: 5 (A - C)
 Plus Appendix Pages
 Finalized Date: 23-SEP-2016
 Account: MTT

Project: TJ

CERTIFICATE OF ANALYSIS WH16139939

Sample Description	Method	WEI-21	Au-ICP21	ME-ICP41	ME-ICP41	ME-ICP41	ME-ICP41	ME-ICP41	ME-ICP41	ME-ICP41	ME-ICP41	ME-ICP41	ME-ICP41	ME-ICP41	ME-ICP41	ME-ICP41
	Analyte	Recvd Wt.	Au	Ag	Al	As	B	Ba	Be	Bi	Ca	Cd	Co	Cr	Cu	Fe
Units		kg	ppm	ppm	%	ppm	ppm	ppm	ppm	ppm	%	ppm	ppm	ppm	ppm	%
LOR		0.02	0.001	0.2	0.01	2	10	10	0.5	2	0.01	0.5	1	1	1	0.01
ZZ110828		0.40	0.004	<0.2	2.16	8	<10	450	0.7	<2	0.48	<0.5	11	33	19	3.65
ZZ110829		0.32	0.005	0.2	1.98	8	<10	560	0.8	<2	0.53	<0.5	11	33	19	3.68
ZZ110830		0.20	0.005	0.2	1.17	6	<10	620	1.0	<2	0.52	<0.5	8	19	16	3.40
ZZ110831		0.28	0.004	0.2	1.28	5	<10	670	0.9	<2	0.54	<0.5	8	20	19	2.94
ZZ110832		0.34	0.004	<0.2	1.31	5	<10	400	0.5	<2	0.36	<0.5	7	17	7	4.28
ZZ110833		0.26	0.002	0.3	1.63	5	<10	440	0.6	2	0.62	<0.5	11	24	16	3.28
ZZ110834		0.32	0.002	<0.2	1.72	6	<10	460	0.7	<2	0.64	<0.5	10	25	16	3.41
ZZ110835		0.38	0.011	0.2	2.01	5	<10	450	0.7	<2	0.72	<0.5	9	28	18	3.29
ZZ110836		0.22	0.018	<0.2	1.93	6	<10	280	<0.5	<2	0.47	<0.5	10	28	14	3.13
ZZ110837		0.36	0.006	<0.2	2.24	7	<10	450	0.6	<2	0.56	<0.5	10	34	16	3.31
ZZ110838		0.32	0.002	<0.2	2.05	7	<10	440	0.7	<2	0.67	<0.5	13	28	15	3.75
ZZ110839		0.32	0.002	0.2	1.50	<2	<10	360	0.7	<2	0.63	<0.5	6	14	8	2.30
ZZ110840		0.32	0.006	<0.2	2.88	11	<10	290	0.7	<2	0.31	<0.5	13	36	23	3.87
ZZ110841		0.34	0.001	<0.2	2.54	8	<10	350	0.5	<2	0.32	<0.5	10	31	20	3.65
ZZ110842		0.32	<0.001	<0.2	2.37	7	<10	260	0.5	<2	0.50	<0.5	12	32	18	3.53
ZZ110843		0.52	0.001	<0.2	2.23	6	<10	290	0.7	2	0.63	<0.5	11	36	25	3.66
ZZ110844		0.22	0.001	<0.2	2.46	11	<10	200	0.5	<2	0.38	<0.5	11	36	21	3.72
ZZ110845		0.22	0.002	0.2	2.18	9	<10	200	<0.5	<2	0.37	<0.5	9	33	16	3.80
ZZ110846		0.26	<0.001	<0.2	2.04	12	<10	140	<0.5	<2	0.16	<0.5	9	32	14	3.94
ZZ110847		0.22	0.003	0.2	2.31	10	<10	170	0.5	<2	0.30	<0.5	11	35	21	3.78
ZZ110848		0.26	0.003	<0.2	2.78	14	<10	180	0.6	<2	0.23	<0.5	11	41	20	3.54
ZZ110849		0.24	0.002	0.2	1.52	6	<10	140	<0.5	<2	0.30	<0.5	4	24	14	2.39
ZZ110850		0.26	<0.001	<0.2	1.65	6	<10	150	<0.5	<2	0.25	<0.5	6	24	14	2.81
ZZ110851		0.24	0.001	<0.2	1.52	5	<10	130	<0.5	<2	0.47	<0.5	9	25	10	2.55
ZZ110852		0.22	0.002	<0.2	1.99	4	<10	230	0.6	<2	0.69	<0.5	9	31	25	2.85
ZZ110853		0.32	0.003	0.6	4.70	10	<10	500	1.5	<2	0.99	<0.5	13	55	51	4.91
ZZ110854		0.16	0.001	<0.2	1.85	6	<10	150	<0.5	<2	0.31	<0.5	8	26	15	3.01
ZZ110855		0.40	0.002	0.2	2.29	3	<10	220	0.6	<2	0.79	<0.5	10	30	19	3.53
ZZ110856		0.42	0.001	<0.2	2.08	3	<10	210	<0.5	<2	0.66	<0.5	9	28	13	3.13
ZZ110857		0.30	0.002	<0.2	1.97	5	<10	230	0.5	<2	0.73	<0.5	12	29	14	3.54
ZZ110858		0.40	0.016	<0.2	1.78	3	<10	270	0.5	<2	0.61	<0.5	10	26	16	3.12
ZZ110859		0.40	0.017	<0.2	2.08	2	<10	330	0.6	<2	0.68	<0.5	9	28	18	2.82
ZZ110860		0.38	0.002	<0.2	1.68	5	<10	400	0.6	<2	0.82	<0.5	9	23	12	3.30
ZZ110861		0.30	<0.001	<0.2	2.39	4	<10	340	0.6	<2	0.15	<0.5	8	21	10	3.93
ZZ110862		0.36	0.003	<0.2	1.95	8	<10	340	<0.5	<2	0.21	<0.5	8	29	12	3.18
ZZ110863		0.28	0.001	<0.2	2.03	8	<10	350	0.5	<2	0.32	<0.5	10	31	13	3.21
ZZ110864		0.30	<0.001	<0.2	2.29	9	<10	360	0.6	<2	0.29	<0.5	13	38	15	3.55
ZZ110865		0.26	<0.001	<0.2	2.37	6	<10	310	0.5	<2	0.35	<0.5	13	28	11	3.81
ZZ110866		0.22	<0.001	<0.2	2.34	4	<10	430	0.5	<2	0.56	<0.5	13	25	11	3.91
ZZ110867		0.26	0.001	<0.2	2.64	8	<10	230	0.9	<2	0.46	<0.5	9	34	20	4.00



ALS Canada Ltd.
 2103 Dollarton Hwy
 North Vancouver BC V7H 0A7
 Phone: +1 (604) 984 0221 Fax: +1 (604) 984 0218
 www.alsglobal.com

To: STRATEGIC METALS LTD.
 C/O ARCHER, CATHRO & ASSOCIATES (1981)
 LIMITED
 1016-510 W HASTINGS ST
 VANCOUVER BC V6B 1L8

Page: 2 - B
 Total # Pages: 5 (A - C)
 Plus Appendix Pages
 Finalized Date: 23-SEP-2016
 Account: MTT

Project: TJ

CERTIFICATE OF ANALYSIS WH16139939

Sample Description	Method Analyte Units LOR	ME-ICP41	ME-ICP41	ME-ICP41	ME-ICP41	ME-ICP41	ME-ICP41	ME-ICP41	ME-ICP41	ME-ICP41	ME-ICP41	ME-ICP41	ME-ICP41	ME-ICP41	ME-ICP41	
		Ga	Hg	K	La	Mg	Mn	Mo	Na	Ni	P	Pb	S	Sb	Sc	Sr
		ppm	ppm	%	ppm	%	ppm	ppm	%	ppm	ppm	ppm	%	ppm	ppm	ppm
		10	1	0.01	10	0.01	5	1	0.01	1	10	2	0.01	2	1	1
ZZ110828		10	<1	0.11	30	0.62	703	1	0.01	19	670	16	0.01	<2	7	39
ZZ110829		10	<1	0.14	30	0.57	686	1	<0.01	18	760	24	0.02	<2	7	47
ZZ110830		<10	<1	0.12	30	0.29	629	1	<0.01	9	760	21	0.02	<2	7	47
ZZ110831		<10	<1	0.12	30	0.32	559	1	<0.01	9	710	16	0.03	<2	6	51
ZZ110832		<10	<1	0.10	30	0.35	570	1	<0.01	6	710	17	0.01	<2	4	30
ZZ110833		10	<1	0.12	30	0.57	1135	1	<0.01	13	780	15	0.03	<2	5	55
ZZ110834		10	<1	0.13	40	0.55	837	1	<0.01	14	780	14	0.02	<2	7	60
ZZ110835		10	<1	0.10	30	0.62	526	1	0.01	15	870	14	0.03	<2	7	63
ZZ110836		10	<1	0.10	20	0.59	552	1	<0.01	14	510	12	0.01	<2	4	39
ZZ110837		10	<1	0.09	20	0.66	621	1	0.01	18	700	13	0.01	<2	6	47
ZZ110838		10	<1	0.08	30	0.64	1090	1	0.01	14	920	16	0.02	<2	6	47
ZZ110839		<10	<1	0.11	30	0.39	304	1	<0.01	6	930	16	<0.01	<2	4	41
ZZ110840		10	<1	0.11	20	0.64	562	1	<0.01	24	630	14	<0.01	3	6	26
ZZ110841		10	<1	0.09	20	0.61	427	2	<0.01	17	450	14	<0.01	<2	6	26
ZZ110842		10	<1	0.08	20	0.77	600	1	0.01	20	680	10	<0.01	<2	5	34
ZZ110843		10	<1	0.12	50	0.82	598	1	0.01	21	830	12	<0.01	<2	10	41
ZZ110844		10	<1	0.09	20	0.73	469	1	0.01	23	700	11	<0.01	<2	5	25
ZZ110845		10	<1	0.07	10	0.69	481	1	0.01	18	620	11	0.01	2	4	26
ZZ110846		10	<1	0.09	10	0.54	428	1	<0.01	16	400	11	<0.01	<2	4	16
ZZ110847		10	<1	0.08	10	0.58	495	1	0.01	20	470	12	0.01	<2	4	27
ZZ110848		10	<1	0.08	10	0.65	340	1	<0.01	26	360	10	<0.01	<2	5	21
ZZ110849		10	<1	0.05	20	0.26	163	1	<0.01	7	770	10	<0.01	<2	2	29
ZZ110850		10	<1	0.08	10	0.46	495	1	0.01	16	760	10	0.02	<2	3	19
ZZ110851		10	<1	0.06	20	0.61	436	<1	0.01	14	590	10	0.01	<2	3	28
ZZ110852		10	<1	0.08	30	0.54	497	1	0.01	18	700	10	0.03	<2	5	43
ZZ110853		10	<1	0.16	120	0.70	957	2	0.01	36	1180	15	0.07	<2	13	61
ZZ110854		10	<1	0.08	20	0.47	624	1	0.01	16	510	11	0.02	<2	4	23
ZZ110855		10	<1	0.11	60	0.73	791	1	0.01	17	930	12	0.05	<2	7	42
ZZ110856		10	<1	0.07	30	0.75	476	<1	0.01	15	840	11	0.03	<2	6	40
ZZ110857		10	<1	0.07	30	0.73	803	1	0.01	15	910	9	0.03	<2	6	48
ZZ110858		10	<1	0.09	30	0.74	488	<1	0.01	14	880	8	0.02	<2	5	39
ZZ110859		10	<1	0.11	50	0.77	484	<1	0.01	15	820	13	0.04	<2	7	48
ZZ110860		10	<1	0.17	50	0.44	561	1	0.01	12	810	16	0.04	<2	8	48
ZZ110861		10	<1	0.21	10	0.56	849	1	0.01	13	340	16	0.01	<2	4	16
ZZ110862		10	<1	0.08	10	0.48	432	1	0.01	17	270	12	0.01	<2	3	20
ZZ110863		10	<1	0.11	10	0.53	932	1	0.01	18	510	10	0.01	<2	4	31
ZZ110864		10	<1	0.11	10	0.63	1225	1	0.01	23	340	12	0.01	<2	4	29
ZZ110865		10	<1	0.11	10	0.59	1090	1	0.01	18	510	12	0.02	<2	4	34
ZZ110866		10	<1	0.22	10	0.80	1290	1	0.02	17	600	10	0.04	<2	5	48
ZZ110867		10	<1	0.13	30	0.69	538	1	0.01	20	550	14	0.02	<2	6	38



ALS Canada Ltd.
 2103 Dollarton Hwy
 North Vancouver BC V7H 0A7
 Phone: +1 (604) 984 0221 Fax: +1 (604) 984 0218
 www.alsglobal.com

To: STRATEGIC METALS LTD.
 C/O ARCHER, CATHRO & ASSOCIATES (1981)
 LIMITED
 1016-510 W HASTINGS ST
 VANCOUVER BC V6B 1L8

Page: 2 - C
 Total # Pages: 5 (A - C)
 Plus Appendix Pages
 Finalized Date: 23-SEP-2016
 Account: MTT

Project: TJ

CERTIFICATE OF ANALYSIS WH16139939

Sample Description	Method Analyte Units LOR	ME-ICP41	ME-ICP41	ME-ICP41	ME-ICP41	ME-ICP41	ME-ICP41	
		Th	Ti	Ti	U	V	W	Zn
		ppm	%	ppm	ppm	ppm	ppm	ppm
		20	0.01	10	10	1	10	2
ZZ110828		<20	0.07	<10	<10	67	<10	83
ZZ110829		<20	0.06	<10	<10	64	<10	94
ZZ110830		<20	0.02	<10	<10	52	<10	85
ZZ110831		<20	0.02	<10	<10	46	<10	78
ZZ110832		20	0.05	<10	<10	49	<10	61
ZZ110833		<20	0.08	<10	10	58	<10	85
ZZ110834		<20	0.07	<10	10	56	<10	103
ZZ110835		<20	0.06	<10	10	60	<10	94
ZZ110836		<20	0.07	<10	<10	63	<10	79
ZZ110837		<20	0.08	<10	<10	67	<10	76
ZZ110838		20	0.05	<10	10	61	<10	72
ZZ110839		<20	0.03	<10	<10	41	<10	59
ZZ110840		<20	0.07	<10	<10	72	<10	75
ZZ110841		<20	0.08	<10	<10	79	<10	62
ZZ110842		<20	0.11	<10	<10	74	<10	71
ZZ110843		<20	0.12	<10	<10	72	<10	82
ZZ110844		<20	0.13	<10	<10	83	<10	66
ZZ110845		<20	0.14	<10	<10	91	<10	62
ZZ110846		<20	0.11	<10	<10	90	<10	53
ZZ110847		<20	0.11	<10	<10	92	<10	62
ZZ110848		<20	0.12	<10	<10	88	<10	61
ZZ110849		<20	0.09	<10	<10	66	<10	28
ZZ110850		<20	0.09	<10	<10	64	<10	66
ZZ110851		<20	0.11	<10	<10	58	<10	59
ZZ110852		<20	0.08	<10	<10	63	<10	61
ZZ110853		<20	0.06	<10	10	83	<10	88
ZZ110854		<20	0.08	<10	<10	66	<10	63
ZZ110855		<20	0.13	<10	10	67	<10	83
ZZ110856		<20	0.11	<10	<10	63	<10	81
ZZ110857		<20	0.11	<10	<10	66	<10	82
ZZ110858		<20	0.09	<10	<10	59	<10	82
ZZ110859		20	0.09	<10	<10	61	<10	90
ZZ110860		20	0.05	<10	10	49	<10	60
ZZ110861		<20	0.08	<10	<10	67	<10	88
ZZ110862		<20	0.08	<10	<10	71	<10	54
ZZ110863		<20	0.08	<10	<10	69	<10	61
ZZ110864		<20	0.10	<10	<10	77	<10	63
ZZ110865		<20	0.12	<10	<10	78	<10	88
ZZ110866		<20	0.19	<10	<10	72	<10	97
ZZ110867		20	0.11	<10	<10	81	<10	78



ALS Canada Ltd.
 2103 Dollarton Hwy
 North Vancouver BC V7H 0A7
 Phone: +1 (604) 984 0221 Fax: +1 (604) 984 0218
 www.alsglobal.com

To: STRATEGIC METALS LTD.
 C/O ARCHER, CATHRO & ASSOCIATES (1981)
 LIMITED
 1016-510 W HASTINGS ST
 VANCOUVER BC V6B 1L8

Page: 3 - A
 Total # Pages: 5 (A - C)
 Plus Appendix Pages
 Finalized Date: 23-SEP-2016
 Account: MTT

Project: TJ

CERTIFICATE OF ANALYSIS WH16139939

Sample Description	Method Analyte Units LOR	WEI-21	Au-ICP21	ME-ICP41	ME-ICP41	ME-ICP41	ME-ICP41	ME-ICP41	ME-ICP41	ME-ICP41	ME-ICP41	ME-ICP41	ME-ICP41	ME-ICP41	ME-ICP41	ME-ICP41
		Recvd Wt. kg	Au ppm	Ag ppm	Al %	As ppm	B ppm	Ba ppm	Be ppm	Bi ppm	Ca %	Cd ppm	Co ppm	Cr ppm	Cu ppm	Fe %
		0.02	0.001	0.2	0.01	2	10	10	0.5	2	0.01	0.5	1	1	1	0.01
ZZ110868		0.32	0.001	<0.2	1.82	9	<10	140	<0.5	<2	0.32	<0.5	6	26	11	3.31
ZZ110869		0.20	0.004	0.3	3.81	13	<10	500	2.3	<2	0.76	<0.5	20	44	53	5.29
ZZ110870		0.36	0.001	<0.2	1.95	4	<10	270	0.6	<2	0.57	<0.5	10	26	17	3.11
ZZ110871		0.16	0.004	0.5	2.69	6	<10	510	1.2	<2	1.52	<0.5	9	30	34	3.29
ZZ110872		0.34	0.002	0.2	1.78	5	<10	320	0.6	<2	0.62	<0.5	8	27	21	2.95
ZZ110873		0.34	0.002	<0.2	1.98	7	<10	290	0.7	<2	0.84	<0.5	8	27	21	3.35
ZZ110874		0.30	0.002	<0.2	2.89	11	<10	550	1.6	2	1.00	<0.5	12	30	27	4.29
ZZ110883		0.32	0.001	<0.2	2.99	12	<10	260	0.6	<2	0.19	0.5	12	38	15	4.27
ZZ110884		0.42	0.006	0.2	2.45	9	<10	480	0.9	<2	0.52	<0.5	8	31	21	3.72
ZZ110885		0.46	0.003	<0.2	1.83	4	<10	330	0.5	<2	0.44	<0.5	20	24	8	3.56
ZZ110886		0.36	0.004	<0.2	1.80	6	<10	330	0.6	<2	0.46	<0.5	8	25	16	2.95
ZZ110887		0.38	0.005	<0.2	1.62	5	<10	460	0.5	<2	0.27	<0.5	8	22	11	3.00
ZZ110888		0.46	0.003	<0.2	1.12	4	<10	550	0.9	<2	0.40	<0.5	7	18	10	2.70
ZZ110889		0.36	0.003	0.2	1.95	3	<10	510	0.9	<2	0.63	<0.5	9	23	16	3.29
ZZ110890		0.42	0.004	<0.2	2.67	8	<10	400	0.8	<2	0.34	<0.5	13	34	14	4.23
ZZ110891		0.32	0.010	<0.2	2.34	6	<10	340	0.8	<2	0.43	<0.5	8	30	17	3.39
ZZ110892		0.38	0.006	<0.2	2.89	8	<10	460	1.4	<2	0.45	<0.5	14	37	25	4.28
ZZ110893		0.40	0.002	<0.2	2.42	9	<10	190	0.6	<2	0.30	<0.5	9	33	17	3.77
ZZ110894		0.44	0.002	<0.2	2.10	9	<10	130	<0.5	<2	0.19	<0.5	9	29	18	3.49
ZZ110895		0.42	0.001	<0.2	2.07	10	<10	120	<0.5	<2	0.14	<0.5	9	30	12	3.71
ZZ110896		0.42	0.002	<0.2	2.60	10	<10	220	0.8	<2	0.25	<0.5	12	37	15	3.57
ZZ110897		0.48	0.001	<0.2	2.16	10	<10	130	0.5	<2	0.13	<0.5	9	30	21	3.50
ZZ110898		0.46	<0.001	<0.2	2.46	9	<10	160	<0.5	<2	0.18	<0.5	11	32	16	3.69
ZZ110899		0.38	0.001	<0.2	2.58	10	<10	180	0.6	<2	0.17	<0.5	11	35	17	3.89
ZZ110900		0.38	0.001	<0.2	2.23	7	<10	330	0.5	<2	0.38	<0.5	8	31	16	3.11
ZZ110901		0.40	0.001	<0.2	2.31	10	<10	170	0.5	<2	0.33	<0.5	10	34	17	3.25
ZZ110902		0.40	0.001	<0.2	2.79	10	<10	220	0.5	<2	0.14	<0.5	13	30	18	3.59
ZZ110903		0.44	0.002	<0.2	2.88	9	<10	170	0.7	2	0.20	<0.5	12	38	21	3.41
ZZ110904		0.40	0.001	0.2	2.36	10	<10	200	<0.5	<2	0.34	<0.5	10	30	16	3.40
ZZ110905		0.40	0.001	<0.2	1.72	4	<10	170	0.5	<2	0.43	<0.5	9	25	14	2.96
ZZ110906		0.36	0.002	<0.2	1.26	6	<10	130	<0.5	<2	0.24	<0.5	5	22	9	2.28
ZZ110907		0.38	0.003	<0.2	2.90	11	<10	180	0.7	<2	0.19	<0.5	12	43	29	3.56
ZZ110908		0.38	0.001	0.2	2.26	8	<10	150	0.5	<2	0.36	<0.5	9	33	18	2.85
ZZ110909		0.30	0.004	<0.2	3.05	10	<10	100	0.5	<2	0.16	<0.5	12	41	19	3.41
ZZ110910		0.36	0.002	<0.2	2.58	12	<10	140	0.6	<2	0.20	<0.5	10	37	16	3.79
ZZ110911		0.40	0.003	<0.2	1.84	7	<10	130	<0.5	<2	0.30	<0.5	8	28	13	3.00
ZZ110912		0.42	0.003	<0.2	2.30	10	<10	160	0.5	<2	0.43	<0.5	12	39	15	3.40
ZZ110913		0.34	0.004	<0.2	2.33	8	<10	270	0.6	<2	0.68	<0.5	13	38	24	3.46
ZZ110914		0.38	0.003	<0.2	2.45	10	<10	300	0.7	2	0.82	<0.5	13	39	26	3.60
ZZ110915		0.44	0.001	<0.2	2.07	4	<10	200	0.5	<2	0.60	<0.5	10	27	11	3.14



ALS Canada Ltd.
 2103 Dollarton Hwy
 North Vancouver BC V7H 0A7
 Phone: +1 (604) 984 0221 Fax: +1 (604) 984 0218
 www.alsglobal.com

To: STRATEGIC METALS LTD.
 C/O ARCHER, CATHRO & ASSOCIATES (1981)
 LIMITED
 1016-510 W HASTINGS ST
 VANCOUVER BC V6B 1L8

Page: 3 - B
 Total # Pages: 5 (A - C)
 Plus Appendix Pages
 Finalized Date: 23-SEP-2016
 Account: MTT

Project: TJ

CERTIFICATE OF ANALYSIS WH16139939

Sample Description	Method Analyte Units LOR	ME-ICP41	ME-ICP41	ME-ICP41	ME-ICP41	ME-ICP41	ME-ICP41	ME-ICP41	ME-ICP41	ME-ICP41	ME-ICP41	ME-ICP41	ME-ICP41	ME-ICP41	ME-ICP41	
		Ga	Hg	K	La	Mg	Mn	Mo	Na	Ni	P	Pb	S	Sb	Sc	Sr
		ppm	ppm	%	ppm	%	ppm	ppm	%	ppm	ppm	ppm	%	ppm	ppm	ppm
		10	1	0.01	10	0.01	5	1	0.01	1	10	2	0.01	2	1	1
ZZ110868		10	<1	0.12	20	0.57	341	1	0.01	15	320	9	0.01	<2	4	26
ZZ110869		10	<1	0.15	170	0.57	3200	2	0.01	35	1550	20	0.09	<2	12	68
ZZ110870		10	<1	0.13	50	0.61	884	1	0.01	16	580	11	0.02	<2	5	45
ZZ110871		10	<1	0.11	140	0.49	1195	1	0.02	26	1570	11	0.11	<2	8	136
ZZ110872		10	<1	0.17	50	0.58	908	1	0.02	16	450	12	0.02	<2	5	60
ZZ110873		10	<1	0.18	60	0.61	539	1	0.02	18	470	12	0.04	<2	5	71
ZZ110874		10	<1	0.28	190	0.75	1350	1	0.02	22	920	17	0.05	<2	13	85
ZZ110883		10	<1	0.10	10	0.65	477	1	0.01	28	340	17	0.01	<2	5	18
ZZ110884		10	<1	0.18	40	0.54	1155	2	0.01	20	940	20	0.05	<2	8	47
ZZ110885		10	<1	0.18	30	0.65	1000	4	0.01	12	760	13	0.02	<2	5	31
ZZ110886		10	<1	0.06	40	0.49	365	1	0.01	14	820	12	0.03	<2	6	35
ZZ110887		10	<1	0.08	20	0.41	490	<1	0.01	14	440	11	0.01	<2	4	22
ZZ110888		<10	<1	0.11	30	0.32	551	<1	0.01	12	830	16	0.01	<2	5	30
ZZ110889		10	<1	0.15	50	0.56	853	<1	0.01	15	880	13	0.03	<2	7	51
ZZ110890		10	<1	0.11	30	0.68	830	1	0.01	22	540	18	0.01	<2	6	27
ZZ110891		10	<1	0.09	30	0.57	423	1	0.01	20	710	14	0.03	<2	5	36
ZZ110892		10	<1	0.13	60	0.66	1095	1	0.01	24	980	18	0.03	<2	10	40
ZZ110893		10	<1	0.09	30	0.63	429	1	0.01	22	560	12	0.02	<2	5	24
ZZ110894		10	1	0.08	20	0.50	477	1	0.01	17	470	20	0.02	<2	4	16
ZZ110895		10	1	0.08	10	0.43	369	1	0.01	15	380	17	0.01	<2	4	14
ZZ110896		10	1	0.10	20	0.48	560	1	0.01	22	850	14	0.01	<2	4	20
ZZ110897		10	1	0.09	10	0.39	317	1	0.01	16	470	14	0.01	<2	4	13
ZZ110898		10	1	0.09	10	0.55	439	1	0.01	19	480	12	0.01	<2	5	15
ZZ110899		10	1	0.08	10	0.57	311	1	0.01	24	380	13	0.01	3	4	16
ZZ110900		10	1	0.07	20	0.59	414	1	0.01	17	310	11	0.01	<2	4	34
ZZ110901		10	1	0.07	10	0.64	443	1	0.01	20	310	13	0.01	3	5	24
ZZ110902		10	1	0.09	10	0.67	628	1	0.01	23	340	17	0.01	<2	4	15
ZZ110903		10	1	0.09	20	0.70	424	1	0.01	26	300	12	0.01	<2	5	21
ZZ110904		10	1	0.08	10	0.66	825	1	0.01	18	350	14	0.01	<2	4	30
ZZ110905		10	1	0.08	30	0.72	652	<1	0.01	15	720	13	0.01	<2	4	26
ZZ110906		10	<1	0.07	10	0.32	257	<1	0.01	9	220	11	0.01	<2	3	21
ZZ110907		10	<1	0.07	20	0.61	393	1	0.01	27	490	12	0.01	<2	6	18
ZZ110908		10	1	0.06	20	0.64	276	<1	0.01	22	550	9	0.01	<2	5	23
ZZ110909		10	1	0.06	10	0.54	351	1	0.01	24	310	12	0.01	<2	5	15
ZZ110910		10	1	0.06	10	0.47	303	1	0.01	20	350	14	0.01	2	4	17
ZZ110911		10	<1	0.08	10	0.52	333	<1	0.01	17	390	11	0.01	2	3	21
ZZ110912		10	<1	0.11	10	0.69	590	1	0.01	22	340	13	0.01	<2	5	27
ZZ110913		10	<1	0.09	30	0.71	748	2	0.01	22	680	12	0.02	2	6	39
ZZ110914		10	<1	0.11	50	0.74	811	1	0.02	23	730	13	0.03	<2	7	49
ZZ110915		10	1	0.11	30	0.71	563	1	0.01	14	790	15	0.02	<2	6	33



ALS Canada Ltd.
 2103 Dollarton Hwy
 North Vancouver BC V7H 0A7
 Phone: +1 (604) 984 0221 Fax: +1 (604) 984 0218
 www.alsglobal.com

To: STRATEGIC METALS LTD.
 C/O ARCHER, CATHRO & ASSOCIATES (1981)
 LIMITED
 1016-510 W HASTINGS ST
 VANCOUVER BC V6B 1L8

Page: 3 - C
 Total # Pages: 5 (A - C)
 Plus Appendix Pages
 Finalized Date: 23-SEP-2016
 Account: MTT

Project: TJ

CERTIFICATE OF ANALYSIS WH16139939

Sample Description	Method	ME-ICP41	ME-ICP41	ME-ICP41	ME-ICP41	ME-ICP41	ME-ICP41
	Analyte	Th	Ti	Ti	U	V	W
	Units	ppm	%	ppm	ppm	ppm	ppm
LOR		20	0.01	10	10	1	10
Zn							2
ZZ110868	<20	0.13	<10	<10	72	<10	57
ZZ110869	20	0.05	<10	40	82	<10	81
ZZ110870	<20	0.11	<10	<10	61	<10	69
ZZ110871	<20	0.05	<10	30	50	<10	61
ZZ110872	<20	0.11	<10	<10	64	<10	77
ZZ110873	<20	0.12	<10	10	67	<10	66
ZZ110874	40	0.14	<10	40	67	<10	84
ZZ110883	<20	0.09	<10	<10	72	<10	132
ZZ110884	<20	0.06	<10	10	57	<10	85
ZZ110885	20	0.14	<10	<10	59	<10	81
ZZ110886	<20	0.06	<10	10	57	<10	73
ZZ110887	<20	0.04	<10	<10	52	<10	59
ZZ110888	<20	0.03	<10	<10	38	<10	63
ZZ110889	20	0.06	<10	<10	51	<10	94
ZZ110890	<20	0.09	<10	<10	72	<10	81
ZZ110891	<20	0.06	<10	<10	62	<10	64
ZZ110892	20	0.05	<10	<10	68	<10	84
ZZ110893	<20	0.10	<10	<10	72	<10	68
ZZ110894	<20	0.10	<10	<10	74	<10	72
ZZ110895	<20	0.08	<10	<10	74	<10	54
ZZ110896	<20	0.06	<10	<10	62	<10	64
ZZ110897	<20	0.06	<10	<10	75	<10	49
ZZ110898	<20	0.08	<10	<10	78	<10	56
ZZ110899	<20	0.10	<10	<10	74	<10	55
ZZ110900	<20	0.07	<10	<10	74	<10	55
ZZ110901	<20	0.09	<10	<10	73	<10	61
ZZ110902	<20	0.09	<10	<10	72	<10	71
ZZ110903	<20	0.12	<10	<10	75	<10	68
ZZ110904	<20	0.11	<10	<10	80	<10	66
ZZ110905	<20	0.13	<10	<10	59	<10	71
ZZ110906	<20	0.10	<10	<10	68	<10	40
ZZ110907	<20	0.10	<10	<10	75	<10	63
ZZ110908	<20	0.12	<10	<10	65	<10	55
ZZ110909	<20	0.11	<10	<10	75	<10	56
ZZ110910	<20	0.10	<10	<10	89	<10	55
ZZ110911	<20	0.12	<10	<10	75	<10	60
ZZ110912	<20	0.13	<10	<10	77	<10	74
ZZ110913	<20	0.10	<10	<10	76	<10	75
ZZ110914	<20	0.10	<10	<10	77	<10	82
ZZ110915	<20	0.10	<10	<10	62	<10	88



ALS Canada Ltd.
 2103 Dollarton Hwy
 North Vancouver BC V7H 0A7
 Phone: +1 (604) 984 0221 Fax: +1 (604) 984 0218
 www.alsglobal.com

To: STRATEGIC METALS LTD.
 C/O ARCHER, CATHRO & ASSOCIATES (1981)
 LIMITED
 1016-510 W HASTINGS ST
 VANCOUVER BC V6B 1L8

Page: 4 - A
 Total # Pages: 5 (A - C)
 Plus Appendix Pages
 Finalized Date: 23-SEP-2016
 Account: MTT

Project: TJ

CERTIFICATE OF ANALYSIS WH16139939

Sample Description	Method	WEI-21	Au-ICP21	ME-ICP41	ME-ICP41	ME-ICP41	ME-ICP41	ME-ICP41	ME-ICP41	ME-ICP41	ME-ICP41	ME-ICP41	ME-ICP41	ME-ICP41	ME-ICP41	ME-ICP41
	Analyte	Recvd Wt.	Au	Ag	Al	As	B	Ba	Be	Bi	Ca	Cd	Co	Cr	Cu	Fe
	Units	kg	ppm	ppm	%	ppm	ppm	ppm	ppm	ppm	%	ppm	ppm	ppm	ppm	%
	LOR	0.02	0.001	0.2	0.01	2	10	10	0.5	2	0.01	0.5	1	1	1	0.01
ZZ110916		0.36	0.002	<0.2	2.15	6	<10	200	<0.5	<2	0.68	<0.5	11	34	14	3.29
ZZ110917		0.40	0.007	<0.2	1.65	4	<10	270	0.5	<2	0.73	<0.5	11	23	15	2.94
ZZ110918		0.36	<0.001	<0.2	2.33	6	<10	400	0.8	<2	0.30	<0.5	12	30	12	3.76
ZZ110919		0.36	0.001	0.2	2.06	7	<10	380	0.5	<2	0.35	<0.5	9	32	12	3.02
ZZ110920		0.48	0.001	<0.2	1.90	6	<10	520	0.6	<2	0.36	<0.5	10	27	15	3.11
ZZ110921		0.40	0.001	0.2	2.14	9	<10	310	0.6	<2	0.35	<0.5	12	31	11	3.64
ZZ110922		0.36	<0.001	<0.2	1.93	5	<10	410	0.5	2	0.32	<0.5	11	29	11	3.36
ZZ110923		0.50	0.002	<0.2	1.83	9	<10	260	0.5	<2	0.40	<0.5	11	36	14	3.26
ZZ110924		0.40	0.001	<0.2	2.16	12	<10	260	0.6	<2	0.35	<0.5	12	40	16	3.41
ZZ110925		0.38	0.001	<0.2	2.51	12	<10	250	0.7	2	0.41	<0.5	11	47	17	3.63
ZZ110926		0.40	0.004	<0.2	2.21	11	<10	250	0.5	<2	0.29	<0.5	11	40	13	3.66
ZZ110927		0.40	<0.001	<0.2	2.22	9	<10	280	0.5	<2	0.41	<0.5	10	35	10	3.61
ZZ110928		0.38	0.002	0.3	2.30	9	<10	360	0.9	<2	1.20	<0.5	10	33	30	3.50
ZZ110938		0.38	0.001	<0.2	1.90	10	<10	130	<0.5	<2	0.24	<0.5	8	30	11	3.62
ZZ110939		0.44	0.020	<0.2	2.33	6	<10	190	0.6	2	0.25	<0.5	10	28	16	3.37
ZZ110940		0.46	0.004	<0.2	2.56	9	<10	640	0.9	<2	0.36	<0.5	11	37	23	3.47
ZZ110941		0.48	0.004	<0.2	2.00	9	<10	280	0.6	<2	0.23	<0.5	8	31	14	3.28
ZZ110942		0.40	0.003	<0.2	2.82	8	<10	270	1.0	<2	0.23	<0.5	12	38	19	3.41
ZZ110943		0.32	0.001	<0.2	1.92	8	<10	130	<0.5	<2	0.19	<0.5	9	32	13	3.78
ZZ110944		0.34	0.003	<0.2	2.41	8	<10	250	0.8	<2	0.25	<0.5	8	33	20	3.37
ZZ110945		0.36	0.001	<0.2	2.39	6	<10	320	0.7	<2	0.33	<0.5	12	29	14	3.90
ZZ110946		0.40	0.003	<0.2	1.66	6	<10	340	0.6	<2	0.46	<0.5	9	30	17	3.17
ZZ110947		0.50	0.004	<0.2	1.65	6	<10	470	0.6	<2	0.38	<0.5	9	26	12	3.02
ZZ110948		0.34	0.001	<0.2	1.61	7	<10	500	0.5	<2	0.38	<0.5	9	24	11	3.15
ZZ110949		0.44	0.004	<0.2	1.91	9	<10	910	1.2	<2	0.67	<0.5	10	26	17	3.33
ZZ110950		0.40	0.002	<0.2	1.89	6	<10	860	0.8	<2	0.82	<0.5	10	27	14	3.28
ZZ110951		0.50	0.002	<0.2	2.36	6	<10	250	0.7	<2	0.62	<0.5	10	31	21	3.40
ZZ110952		0.44	0.001	<0.2	2.16	5	<10	330	0.9	<2	0.56	<0.5	11	28	21	3.38
ZZ110953		0.42	0.001	<0.2	2.14	6	<10	220	0.5	<2	0.44	<0.5	9	31	22	3.31
ZZ110954		0.36	0.001	<0.2	3.16	8	<10	200	0.7	<2	0.28	<0.5	12	38	22	4.17
ZZ110955		0.40	0.002	<0.2	2.69	11	<10	170	0.5	<2	0.18	<0.5	12	39	19	3.56
ZZ110956		0.42	0.002	<0.2	2.52	10	<10	120	<0.5	<2	0.17	<0.5	8	35	14	3.50
ZZ110957		0.34	0.002	<0.2	2.70	9	<10	180	0.5	<2	0.26	<0.5	12	37	20	3.73
ZZ110958		0.48	0.001	<0.2	2.36	10	<10	200	0.5	<2	0.28	<0.5	12	35	16	3.56
ZZ110959		0.38	0.003	<0.2	2.64	9	<10	230	0.6	<2	0.33	<0.5	11	36	23	3.44
ZZ110960		0.48	0.003	<0.2	2.43	8	<10	210	0.7	<2	0.30	<0.5	9	35	19	3.50
ZZ110961		0.38	0.004	<0.2	2.50	8	<10	260	0.8	2	0.47	<0.5	11	36	25	3.37
ZZ110962		0.42	<0.001	<0.2	2.09	3	<10	210	0.7	<2	0.46	<0.5	9	21	13	3.51
ZZ110963		0.44	<0.001	<0.2	1.99	6	<10	210	0.5	<2	0.45	<0.5	9	27	16	3.24
ZZ110964		0.40	0.001	<0.2	2.28	8	<10	350	0.6	<2	0.51	<0.5	10	32	20	3.32



ALS Canada Ltd.
 2103 Dollarton Hwy
 North Vancouver BC V7H 0A7
 Phone: +1 (604) 984 0221 Fax: +1 (604) 984 0218
 www.alsglobal.com

To: STRATEGIC METALS LTD.
 C/O ARCHER, CATHRO & ASSOCIATES (1981)
 LIMITED
 1016-510 W HASTINGS ST
 VANCOUVER BC V6B 1L8

Page: 4 - B
 Total # Pages: 5 (A - C)
 Plus Appendix Pages
 Finalized Date: 23-SEP-2016
 Account: MTT

Project: TJ

CERTIFICATE OF ANALYSIS WH16139939

Sample Description	Method Analyte Units LOR	ME-ICP41	ME-ICP41	ME-ICP41	ME-ICP41	ME-ICP41	ME-ICP41	ME-ICP41	ME-ICP41	ME-ICP41	ME-ICP41	ME-ICP41	ME-ICP41	ME-ICP41	ME-ICP41	
		Ga	Hg	K	La	Mg	Mn	Mo	Na	Ni	P	Pb	S	Sb	Sc	Sr
		ppm	ppm	%	ppm	%	ppm	ppm	%	ppm	ppm	ppm	%	ppm	ppm	ppm
		10	1	0.01	10	0.01	5	1	0.01	1	10	2	0.01	2	1	1
ZZ110916		10	<1	0.09	20	0.73	710	1	0.01	16	760	12	0.03	<2	6	45
ZZ110917		10	1	0.09	40	0.60	738	<1	0.01	13	790	9	0.04	<2	5	53
ZZ110918		10	1	0.21	20	0.61	1025	1	0.01	19	430	17	0.01	<2	6	27
ZZ110919		10	1	0.07	10	0.50	694	1	0.01	18	330	12	0.01	2	3	28
ZZ110920		10	<1	0.16	20	0.55	1060	1	0.01	18	500	11	0.01	<2	5	31
ZZ110921		10	1	0.27	20	0.66	817	1	0.01	18	390	13	0.01	<2	6	31
ZZ110922		10	<1	0.32	10	0.64	1065	1	0.01	18	360	13	0.01	<2	5	28
ZZ110923		10	<1	0.29	20	0.65	465	<1	0.01	20	460	11	0.01	<2	6	29
ZZ110924		10	<1	0.28	20	0.64	520	1	0.01	24	290	12	0.01	<2	7	28
ZZ110925		10	1	0.24	20	0.66	406	1	0.01	27	270	11	0.01	<2	8	34
ZZ110926		10	<1	0.29	20	0.69	450	1	0.01	23	240	11	0.01	3	6	25
ZZ110927		10	1	0.13	20	0.59	408	1	0.01	20	260	11	0.01	<2	5	38
ZZ110928		10	1	0.23	70	0.72	826	1	0.02	21	730	12	0.05	<2	9	100
ZZ110938		10	<1	0.06	20	0.60	425	1	0.01	15	300	12	0.01	<2	4	21
ZZ110939		10	<1	0.09	20	0.53	485	1	0.01	21	570	24	0.01	3	4	18
ZZ110940		10	<1	0.09	40	0.60	586	1	0.01	25	460	12	0.01	3	9	31
ZZ110941		10	<1	0.08	20	0.51	456	1	0.01	20	420	11	0.01	<2	4	21
ZZ110942		10	<1	0.07	30	0.54	547	1	0.01	24	670	14	0.01	2	5	19
ZZ110943		10	<1	0.09	10	0.52	521	1	0.01	17	390	13	0.01	<2	4	16
ZZ110944		10	<1	0.08	30	0.49	382	1	0.01	21	570	11	0.02	3	5	22
ZZ110945		10	<1	0.11	20	0.54	604	1	0.01	17	600	13	<0.01	3	6	26
ZZ110946		<10	<1	0.12	20	0.61	500	1	0.01	20	850	11	<0.01	2	5	30
ZZ110947		<10	<1	0.09	20	0.50	509	1	0.01	14	560	13	0.02	2	5	31
ZZ110948		10	<1	0.12	20	0.53	475	1	0.01	14	310	13	<0.01	2	4	33
ZZ110949		10	<1	0.16	40	0.43	961	1	0.01	15	870	16	0.04	2	7	62
ZZ110950		<10	<1	0.17	30	0.49	950	1	0.01	15	1090	15	0.05	<2	7	68
ZZ110951		10	<1	0.12	30	0.62	779	1	0.01	20	660	16	0.02	<2	7	50
ZZ110952		10	<1	0.16	50	0.53	1190	1	0.01	16	560	17	0.01	3	6	38
ZZ110953		10	<1	0.10	40	0.68	689	1	0.01	19	530	14	0.01	2	5	28
ZZ110954		10	<1	0.12	30	0.92	614	1	0.01	27	320	15	0.01	4	6	23
ZZ110955		10	<1	0.06	10	0.62	341	1	0.01	28	240	10	<0.01	<2	4	17
ZZ110956		10	<1	0.07	10	0.53	330	2	0.01	18	290	10	0.01	2	4	16
ZZ110957		10	<1	0.08	10	0.67	357	1	0.01	28	460	11	0.01	3	5	21
ZZ110958		10	<1	0.08	10	0.56	1180	1	0.01	20	480	12	0.01	<2	4	22
ZZ110959		10	<1	0.08	40	0.69	392	1	0.01	27	360	11	<0.01	<2	5	25
ZZ110960		10	<1	0.08	30	0.55	336	1	0.01	20	270	12	0.01	2	5	26
ZZ110961		10	<1	0.08	40	0.66	511	1	0.01	23	480	12	0.01	2	7	34
ZZ110962		10	<1	0.13	40	0.69	847	1	0.01	13	860	15	0.01	<2	5	29
ZZ110963		10	<1	0.10	20	0.58	573	1	0.01	16	400	15	<0.01	<2	5	30
ZZ110964		10	<1	0.09	30	0.66	509	1	0.01	21	530	12	<0.01	2	6	34



ALS Canada Ltd.
 2103 Dollarton Hwy
 North Vancouver BC V7H 0A7
 Phone: +1 (604) 984 0221 Fax: +1 (604) 984 0218
 www.alsglobal.com

To: STRATEGIC METALS LTD.
 C/O ARCHER, CATHRO & ASSOCIATES (1981)
 LIMITED
 1016-510 W HASTINGS ST
 VANCOUVER BC V6B 1L8

Page: 4 - C
 Total # Pages: 5 (A - C)
 Plus Appendix Pages
 Finalized Date: 23-SEP-2016
 Account: MTT

Project: TJ

CERTIFICATE OF ANALYSIS WH16139939

Sample Description	Method	ME-ICP41	ME-ICP41	ME-ICP41	ME-ICP41	ME-ICP41	ME-ICP41
	Analyte	Th	Ti	Ti	U	V	W
	Units	ppm	%	ppm	ppm	ppm	ppm
LOR		20	0.01	10	10	1	10
Zn							2
ZZ110916	<20	0.11	<10	<10	72	<10	88
ZZ110917	<20	0.08	<10	<10	57	<10	73
ZZ110918	20	0.08	<10	<10	70	<10	87
ZZ110919	<20	0.08	<10	<10	74	<10	57
ZZ110920	<20	0.08	<10	<10	61	<10	63
ZZ110921	<20	0.13	<10	<10	74	<10	80
ZZ110922	<20	0.14	<10	<10	67	<10	72
ZZ110923	<20	0.15	<10	<10	72	<10	65
ZZ110924	<20	0.14	<10	<10	75	<10	65
ZZ110925	20	0.15	<10	<10	81	<10	65
ZZ110926	<20	0.15	<10	<10	77	<10	71
ZZ110927	<20	0.12	<10	<10	79	<10	71
ZZ110928	20	0.11	<10	20	62	<10	72
ZZ110938	<20	0.13	<10	<10	88	<10	66
ZZ110939	<20	0.07	<10	<10	61	<10	64
ZZ110940	<20	0.07	<10	<10	63	<10	61
ZZ110941	<20	0.08	<10	<10	73	<10	52
ZZ110942	<20	0.07	<10	<10	64	<10	56
ZZ110943	<20	0.11	<10	<10	82	<10	67
ZZ110944	<20	0.07	<10	<10	69	<10	56
ZZ110945	<20	0.05	<10	<10	71	<10	66
ZZ110946	<20	0.10	<10	<10	63	<10	68
ZZ110947	<20	0.06	<10	<10	56	<10	57
ZZ110948	<20	0.05	<10	<10	58	<10	71
ZZ110949	<20	0.02	<10	<10	48	<10	83
ZZ110950	<20	0.04	<10	<10	53	<10	84
ZZ110951	<20	0.08	<10	<10	64	<10	67
ZZ110952	<20	0.04	<10	<10	62	<10	65
ZZ110953	<20	0.11	<10	<10	69	<10	67
ZZ110954	20	0.14	<10	<10	83	<10	78
ZZ110955	<20	0.12	<10	<10	80	<10	59
ZZ110956	<20	0.11	<10	<10	85	<10	60
ZZ110957	<20	0.11	<10	<10	77	<10	61
ZZ110958	<20	0.11	<10	<10	84	<10	63
ZZ110959	<20	0.10	<10	<10	76	<10	56
ZZ110960	<20	0.09	<10	<10	83	<10	56
ZZ110961	<20	0.09	<10	<10	75	<10	57
ZZ110962	20	0.08	<10	<10	58	<10	75
ZZ110963	<20	0.06	<10	<10	61	<10	60
ZZ110964	<20	0.08	<10	<10	66	<10	61



ALS Canada Ltd.
 2103 Dollarton Hwy
 North Vancouver BC V7H 0A7
 Phone: +1 (604) 984 0221 Fax: +1 (604) 984 0218
 www.alsglobal.com

To: STRATEGIC METALS LTD.
 C/O ARCHER, CATHRO & ASSOCIATES (1981)
 LIMITED
 1016-510 W HASTINGS ST
 VANCOUVER BC V6B 1L8

Page: 5 - A
 Total # Pages: 5 (A - C)
 Plus Appendix Pages
 Finalized Date: 23-SEP-2016
 Account: MTT

Project: TJ

CERTIFICATE OF ANALYSIS WH16139939

Sample Description	Method Analyte Units LOR	WEI-21	Au-ICP21	ME-ICP41	ME-ICP41	ME-ICP41	ME-ICP41	ME-ICP41	ME-ICP41	ME-ICP41	ME-ICP41	ME-ICP41	ME-ICP41	ME-ICP41	ME-ICP41	ME-ICP41
		Recvd Wt. kg	Au ppm	Ag ppm	Al %	As ppm	B ppm	Ba ppm	Be ppm	Bi ppm	Ca %	Cd ppm	Co ppm	Cr ppm	Cu ppm	Fe %
		0.02	0.001	0.2	0.01	2	10	10	0.5	2	0.01	0.5	1	1	1	0.01
ZZ110965		0.38	0.002	<0.2	2.12	7	<10	290	0.5	<2	0.31	<0.5	10	32	18	3.28
ZZ110966		0.36	0.002	<0.2	2.66	8	<10	490	0.8	<2	0.29	<0.5	17	29	17	3.95
ZZ110967		0.38	0.005	<0.2	1.63	5	<10	170	0.5	<2	0.14	<0.5	4	21	19	3.19
ZZ110968		0.38	0.001	<0.2	1.81	9	<10	110	<0.5	<2	0.20	<0.5	8	33	14	4.22
ZZ110969		0.30	0.001	<0.2	3.06	8	<10	150	0.6	<2	0.25	<0.5	11	37	16	3.50
ZZ110970		0.46	0.003	<0.2	2.78	7	<10	170	0.7	<2	0.20	<0.5	15	34	14	3.64
ZZ110971		0.34	0.001	<0.2	1.69	6	<10	100	<0.5	<2	0.15	<0.5	4	24	8	2.43
ZZ110972		0.44	0.004	<0.2	3.19	9	<10	530	1.3	<2	0.52	<0.5	14	38	28	4.41
ZZ110973		0.38	0.003	<0.2	2.47	7	<10	230	0.8	<2	0.26	<0.5	9	31	16	3.59
ZZ110974		0.34	0.003	<0.2	2.32	7	<10	560	1.0	<2	0.44	<0.5	12	31	21	3.71
ZZ110975		0.34	0.006	0.7	2.52	8	<10	770	1.5	<2	0.61	<0.5	10	31	36	3.61
ZZ110976		0.36	0.001	<0.2	2.15	7	<10	540	0.6	<2	0.61	<0.5	10	31	18	3.38
ZZ110977		0.46	0.001	<0.2	1.90	6	<10	310	0.7	<2	0.41	<0.5	12	32	13	3.26
ZZ110978		0.38	0.003	0.5	2.75	6	<10	770	1.6	<2	0.56	<0.5	12	34	30	3.49
ZZ110979		0.46	0.001	<0.2	2.94	7	<10	770	1.2	<2	0.47	<0.5	13	34	31	4.02
ZZ110980		0.46	0.003	<0.2	2.07	8	<10	290	0.5	<2	0.24	<0.5	6	29	19	3.54
ZZ110981		0.38	0.001	<0.2	2.82	7	<10	180	0.6	<2	0.20	<0.5	13	30	16	3.62
ZZ110982		0.48	<0.001	<0.2	2.59	8	<10	250	0.5	<2	0.30	<0.5	9	31	17	3.43
ZZ110983		0.34	0.002	<0.2	1.39	4	<10	250	<0.5	<2	0.26	<0.5	2	20	15	1.71
ZZ110984		0.44	0.001	<0.2	2.98	10	<10	340	0.7	<2	0.37	<0.5	12	40	25	3.65
ZZ110985		0.40	0.001	<0.2	2.60	10	<10	240	0.5	<2	0.37	<0.5	12	37	21	3.94
ZZ110986		0.42	0.002	<0.2	3.48	11	<10	260	1.3	<2	0.26	<0.5	13	41	25	3.93
ZZ110987		0.42	<0.001	<0.2	2.89	9	<10	180	0.6	<2	0.25	<0.5	12	36	22	3.62
ZZ110988		0.46	<0.001	<0.2	2.75	6	<10	260	0.7	<2	0.50	<0.5	11	32	21	3.57
ZZ110989		0.38	0.002	<0.2	2.53	9	<10	190	0.5	<2	0.32	<0.5	11	36	23	3.46
ZZ110990		0.34	<0.001	<0.2	2.47	10	<10	170	<0.5	<2	0.18	<0.5	8	31	14	4.02
ZZ110991		0.48	0.001	<0.2	2.45	8	<10	250	<0.5	<2	0.64	<0.5	11	34	18	3.54
ZZ110992		0.38	0.002	<0.2	2.35	7	<10	220	<0.5	<2	0.48	<0.5	9	33	17	3.34
ZZ110993		0.34	0.001	<0.2	1.93	5	<10	240	<0.5	<2	0.61	<0.5	8	29	17	2.97



ALS Canada Ltd.
 2103 Dollarton Hwy
 North Vancouver BC V7H 0A7
 Phone: +1 (604) 984 0221 Fax: +1 (604) 984 0218
 www.alsglobal.com

To: STRATEGIC METALS LTD.
 C/O ARCHER, CATHRO & ASSOCIATES (1981)
 LIMITED
 1016-510 W HASTINGS ST
 VANCOUVER BC V6B 1L8

Page: 5 - B
 Total # Pages: 5 (A - C)
 Plus Appendix Pages
 Finalized Date: 23-SEP-2016
 Account: MTT

Project: TJ

CERTIFICATE OF ANALYSIS WH16139939

Sample Description	Method Analyte Units LOR	ME-ICP41	ME-ICP41	ME-ICP41	ME-ICP41	ME-ICP41	ME-ICP41	ME-ICP41	ME-ICP41	ME-ICP41	ME-ICP41	ME-ICP41	ME-ICP41	ME-ICP41	ME-ICP41	
		Ga ppm	Hg ppm	K %	La ppm	Mg %	Mn ppm	Mo ppm	Na %	Ni ppm	P ppm	Pb ppm	S %	Sb ppm	Sc ppm	Sr ppm
		10	1	0.01	10	0.01	5	1	0.01	1	10	2	0.01	2	1	1
ZZ110965		10	<1	0.09	20	0.55	490	1	0.01	23	530	12	0.01	<2	4	23
ZZ110966		10	<1	0.10	20	0.35	1690	2	0.01	15	610	19	0.01	<2	3	25
ZZ110967		10	<1	0.07	30	0.29	250	2	0.01	10	300	17	0.01	<2	4	17
ZZ110968		10	<1	0.09	10	0.54	431	1	0.01	16	370	13	0.01	<2	4	17
ZZ110969		10	<1	0.10	10	0.60	431	1	0.01	23	620	8	0.01	<2	6	20
ZZ110970		10	<1	0.09	20	0.57	659	1	0.01	24	660	11	0.01	2	5	15
ZZ110971		10	<1	0.05	20	0.41	164	1	0.01	11	190	14	<0.01	<2	3	15
ZZ110972		10	<1	0.13	110	0.66	972	1	0.01	23	930	17	0.02	4	9	48
ZZ110973		10	<1	0.07	30	0.49	417	1	0.01	20	450	13	0.01	2	5	23
ZZ110974		10	<1	0.12	40	0.54	1005	1	0.01	19	960	20	0.03	3	6	40
ZZ110975		10	<1	0.14	90	0.45	945	1	0.01	19	730	25	0.04	5	11	54
ZZ110976		10	<1	0.08	20	0.55	606	1	0.01	18	780	13	0.04	<2	5	53
ZZ110977		10	<1	0.08	30	0.60	706	1	0.02	17	570	16	0.01	2	6	30
ZZ110978		10	<1	0.12	110	0.47	1550	2	0.01	21	1220	18	0.06	2	9	50
ZZ110979		10	<1	0.11	50	0.52	1115	1	0.01	19	1000	18	0.03	3	8	38
ZZ110980		10	<1	0.06	10	0.27	436	6	0.01	13	680	16	0.04	<2	2	26
ZZ110981		10	<1	0.09	20	0.62	575	1	0.01	19	470	12	0.01	2	5	14
ZZ110982		10	<1	0.08	20	0.59	384	1	0.01	20	390	10	0.01	2	5	26
ZZ110983		10	<1	0.04	50	0.18	96	1	0.01	8	230	14	0.01	<2	3	27
ZZ110984		10	<1	0.08	30	0.71	457	1	0.02	29	510	11	0.01	<2	6	30
ZZ110985		10	<1	0.09	20	0.74	428	1	0.01	26	560	9	0.01	2	5	27
ZZ110986		10	<1	0.08	40	0.65	529	1	0.01	26	440	13	0.02	3	6	25
ZZ110987		10	<1	0.09	10	0.75	396	1	0.01	27	390	11	0.01	2	5	26
ZZ110988		10	<1	0.09	40	0.70	859	1	0.02	19	630	13	0.01	2	5	40
ZZ110989		10	<1	0.07	10	0.67	378	1	0.02	27	370	9	0.02	3	4	30
ZZ110990		10	<1	0.07	10	0.56	329	2	0.01	18	320	13	0.01	<2	4	18
ZZ110991		10	<1	0.07	20	0.68	470	1	0.02	21	770	11	0.02	<2	5	36
ZZ110992		10	<1	0.07	20	0.70	340	1	0.02	23	540	8	0.01	2	5	30
ZZ110993		10	<1	0.08	20	0.63	345	1	0.02	18	530	8	0.02	2	4	43



ALS Canada Ltd.
 2103 Dollarton Hwy
 North Vancouver BC V7H 0A7
 Phone: +1 (604) 984 0221 Fax: +1 (604) 984 0218
 www.alsglobal.com

To: STRATEGIC METALS LTD.
 C/O ARCHER, CATHRO & ASSOCIATES (1981)
 LIMITED
 1016-510 W HASTINGS ST
 VANCOUVER BC V6B 1L8

Page: 5 - C
 Total # Pages: 5 (A - C)
 Plus Appendix Pages
 Finalized Date: 23-SEP-2016
 Account: MTT

Project: TJ

CERTIFICATE OF ANALYSIS WH16139939

Sample Description	Method Analyte Units LOR	ME-ICP41	ME-ICP41	ME-ICP41	ME-ICP41	ME-ICP41	ME-ICP41	
		Th	Ti	Ti	U	V	W	Zn
		ppm	%	ppm	ppm	ppm	ppm	ppm
		20	0.01	10	10	1	10	2
ZZ110965		<20	0.08	<10	<10	66	<10	58
ZZ110966		<20	0.02	<10	<10	77	<10	58
ZZ110967		<20	0.08	<10	<10	71	<10	47
ZZ110968		<20	0.16	<10	<10	101	<10	57
ZZ110969		<20	0.08	<10	<10	67	<10	58
ZZ110970		<20	0.08	<10	<10	63	<10	59
ZZ110971		<20	0.10	<10	<10	76	<10	37
ZZ110972		<20	0.07	<10	10	79	<10	77
ZZ110973		<20	0.07	<10	<10	72	<10	54
ZZ110974		<20	0.03	<10	10	59	<10	86
ZZ110975		20	0.02	<10	10	54	<10	78
ZZ110976		<20	0.05	<10	<10	64	<10	73
ZZ110977		20	0.09	<10	<10	61	<10	70
ZZ110978		20	0.03	<10	10	54	<10	73
ZZ110979		<20	0.02	<10	10	67	<10	72
ZZ110980		<20	0.05	<10	<10	83	<10	37
ZZ110981		<20	0.06	<10	<10	63	<10	62
ZZ110982		<20	0.07	<10	<10	70	<10	55
ZZ110983		<20	0.07	<10	<10	62	<10	25
ZZ110984		<20	0.09	<10	<10	74	<10	60
ZZ110985		<20	0.11	<10	<10	83	<10	63
ZZ110986		<20	0.07	<10	<10	83	<10	58
ZZ110987		<20	0.11	<10	<10	73	<10	64
ZZ110988		<20	0.09	<10	<10	75	<10	62
ZZ110989		<20	0.12	<10	<10	78	<10	60
ZZ110990		<20	0.12	<10	<10	97	<10	53
ZZ110991		<20	0.08	<10	<10	74	<10	58
ZZ110992		<20	0.10	<10	<10	72	<10	56
ZZ110993		<20	0.11	<10	<10	67	<10	56



ALS Canada Ltd.
2103 Dollarton Hwy
North Vancouver BC V7H 0A7
Phone: +1 (604) 984 0221 Fax: +1 (604) 984 0218
www.alsglobal.com

To: STRATEGIC METALS LTD.
C/O ARCHER, CATHRO & ASSOCIATES (1981)
LIMITED
1016-510 W HASTINGS ST
VANCOUVER BC V6B 1L8

Page: Appendix 1
Total # Appendix Pages: 1
Finalized Date: 23-SEP-2016
Account: MTT

Project: TJ

CERTIFICATE OF ANALYSIS WH16139939

CERTIFICATE COMMENTS									
Applies to Method:	<p style="text-align: center;">LABORATORY ADDRESSES</p> <p>Processed at ALS Vancouver located at 2103 Dollarton Hwy, North Vancouver, BC, Canada.</p> <table><tr><td>Au-ICP21</td><td>LOG-22</td><td>ME-ICP41</td><td>SCR-41</td></tr><tr><td>WEI-21</td><td></td><td></td><td></td></tr></table>	Au-ICP21	LOG-22	ME-ICP41	SCR-41	WEI-21			
Au-ICP21	LOG-22	ME-ICP41	SCR-41						
WEI-21									