

ARCHER, CATHRO & ASSOCIATES (1981) LIMITED
1016 – 510 West Hastings Street
Vancouver, B.C. V6B 1L8

Telephone: 604-688-2568

Fax: 604-688-2578

ASSESSMENT REPORT

describing

PROSPECTING AND GEOCHEMICAL SAMPLING

Field work performed on August 22, 2016

at the

CG PROPERTY

CG 1-33 YF41861 – YF41893

NTS 105D/09

Latitude 60°39'N; Longitude 134°18W

located in the

Whitehorse Mining District
Yukon Territory

prepared by

Archer, Cathro & Associates (1981) Limited

for

STRATEGIC METALS LTD.

by

K. Willms, B.Sc.

November 2016

CONTENTS

INTRODUCTION	1
PROPERTY LOCATION, CLAIM DATA AND ACCESS	1
HISTORY AND PREVIOUS WORK	1
GEOMORPHOLOGY AND CLIMATE	2
REGIONAL GEOLOGY	3
PROPERTY GEOLOGY	5
MINERALIZATON	5
SOIL GEOCHEMISTRY	5
GEOPHYSICS	6
DISCUSSION AND CONCLUSIONS	7
REFERENCES	8

APPENDICES

I	STATEMENT OF QUALIFICATIONS
II	STATEMENT OF EXPENDITURES
III	ROCK SAMPLE DESCRIPTIONS
IV	CERTIFICATES OF ANALYSIS

FIGURES

<u>No.</u>	<u>Description</u>	<u>Follows Page</u>
1	Property Location	1
2	Claim Locations	1
3	Tectonic Setting	3
4	Regional Geology	3
5	Sample Locations	5
6	Gold Soil Geochemistry	5
7	Copper Geochemistry	5
8	Lead Geochemistry	5

TABLES

<u>No.</u>	<u>Description</u>	<u>Page</u>
I	Lithological Units	3
II	Soil Geochemical Thresholds	6

INTRODUCTION

The CG property is located along the boundary between the Cache Creek and Stikinia Terranes, in southern Yukon. The property covers high-grade gold prospects defined by rock and soil samples. The property is wholly owned by Strategic Metals Ltd.

This report describes geochemical sampling and prospecting performed on August 22, 2016 by Archer, Cathro & Associates (1981) Limited on behalf of Strategic Metals Ltd. The author interpreted results from current and previous work completed on the property, and his Statement of Qualifications is in Appendix I. A Statement of Expenditures appears in Appendix II.

PROPERTY LOCATION, CLAIM DATA AND ACCESS

The CG property is located in southern Yukon, at latitude 60°39' north and longitude 134°18' west on NTS map sheet 105D/09 (Figure 1). It comprises 33 contiguous quartz claims that cover an area of approximately 690 hectares (6.9 km²). The claims are registered with the Whitehorse Mining Recorder in the name of Archer Cathro, which holds them in trust for Strategic Metals. Specifics concerning claim registration are given below, while the locations of individual claims are illustrated on Figure 2.

<u>Claim Name</u>	<u>Grant Number</u>	<u>Expiry Date*</u>
CG 1-33	YF41861 – YF41893	July 25, 2017

* Expiry dates do not include 2016 work which has not yet been filed for assessment credit.

The CG claims surround two claims owned by an independent prospector, Ron Berdahl.

In 2016, access to the property was provided by a Bell 206B Jet Ranger operated by Capital Helicopters Inc. from its base at the Whitehorse airport. The CG property is situated 40 km east-southeast of Whitehorse, the largest city in Yukon and closest supply centre. The Alaska Highway is located 11 km south of the property.

The CG property lies within the traditional territories of the Kwanlin Dun and Ta'an Kwäch'än First Nations, which have both concluded land claim agreements with Canada and Yukon. Class A lands belonging to the Kwanlin Dun First Nations surround the property to the north, south and west. The closest boundary lies 850 m to the west.

HISTORY AND PREVIOUS WORK

In 1985, the Geological Survey of Canada (GSC) conducted a regional stream sediment and water geochemical reconnaissance survey over NTS map sheet 105D. Three creeks draining the CG claims were sampled and returned anomalous gold values of 60 ppb, 29 ppb and 22 ppb (GSC, 1985).

STRATEGIC METALS LTD.

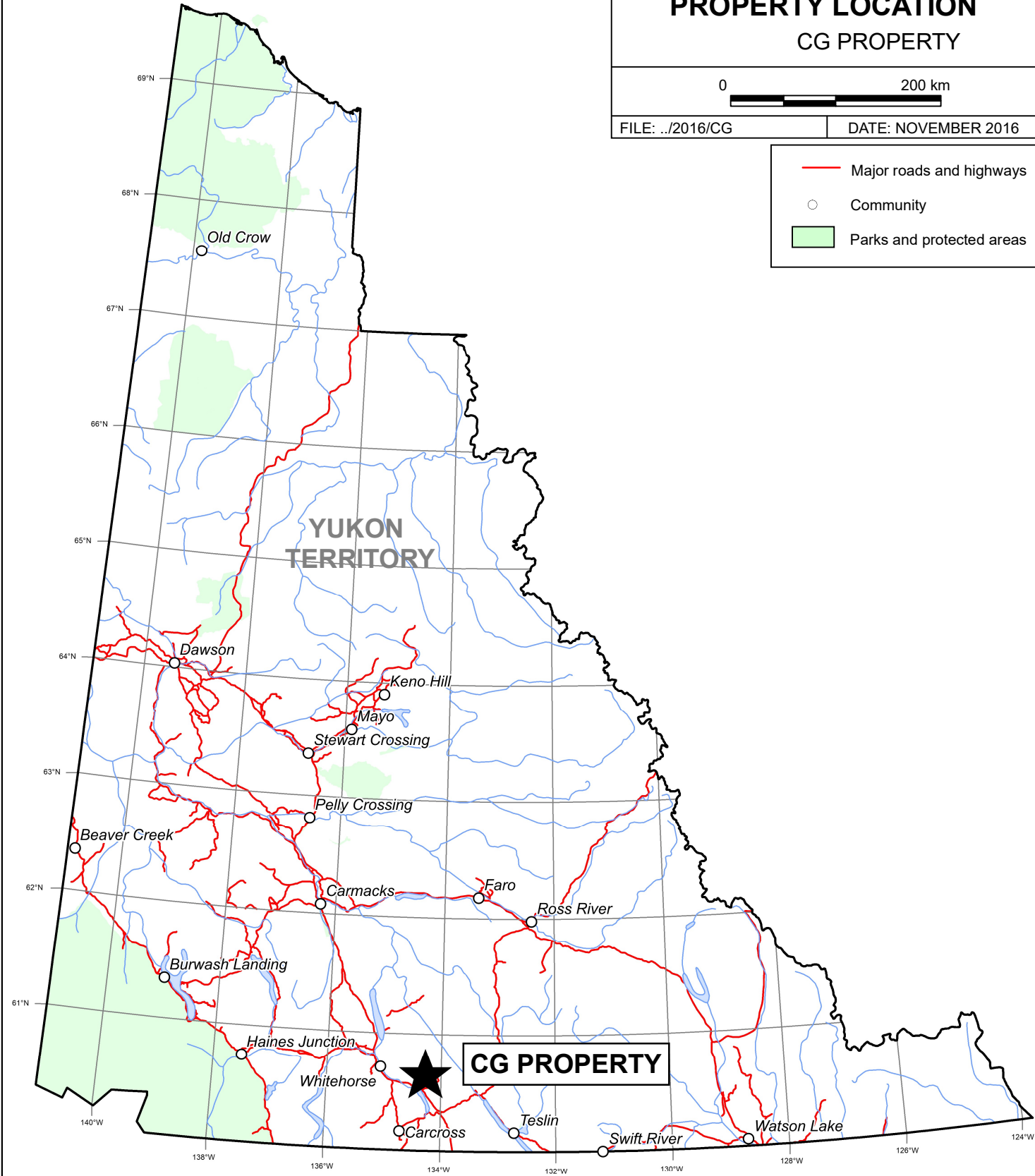
FIGURE 1
ARCHER, CATHRO & ASSOCIATES (1981) LIMITED
PROPERTY LOCATION
CG PROPERTY

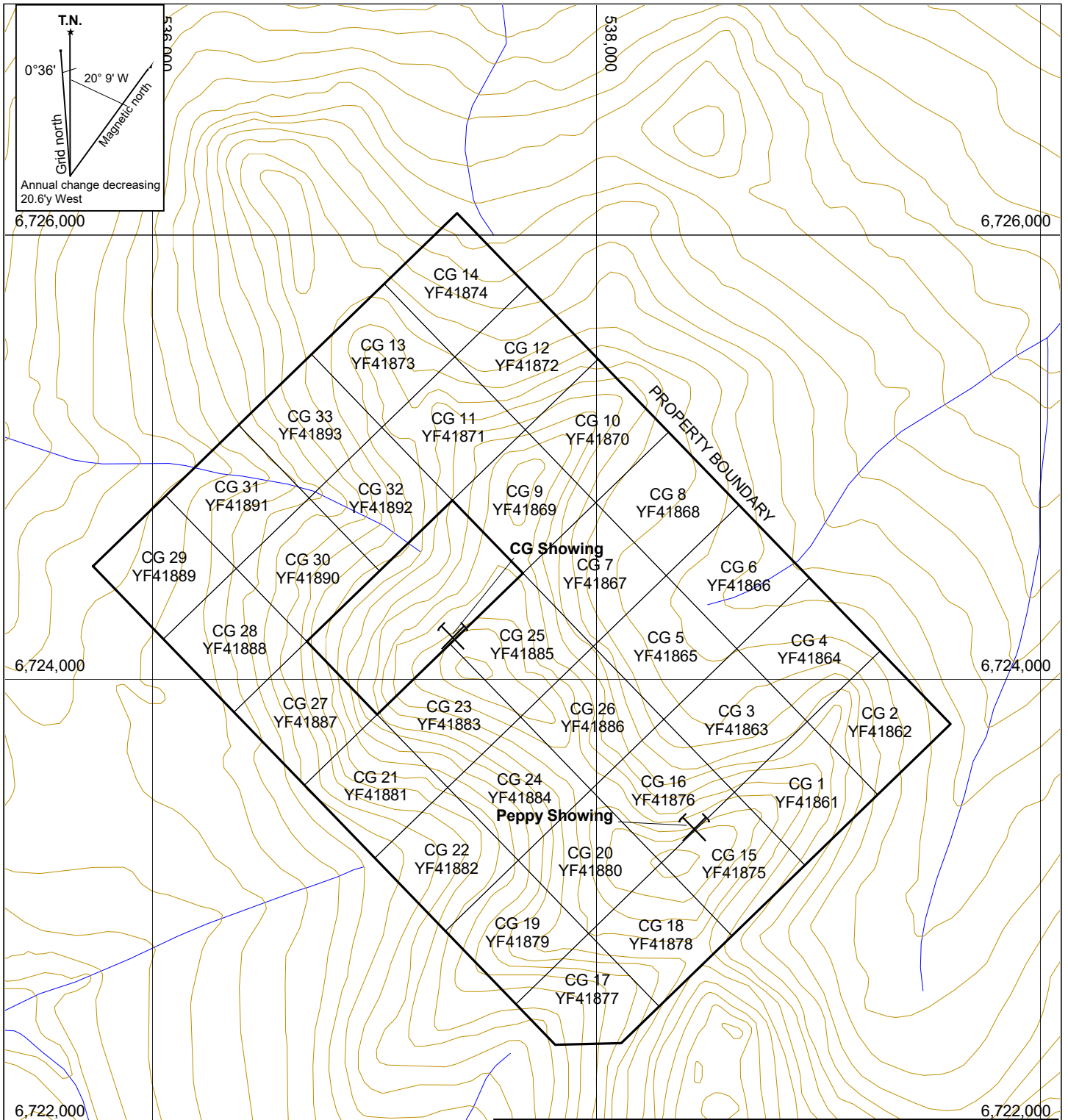


FILE: ../2016/CG

DATE: NOVEMBER 2016

- Major roads and highways
- Community
- Parks and protected areas



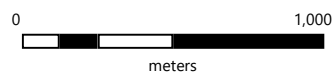


STRATEGIC METALS LTD.

FIGURE 2
 ARCHER, CATHRO & ASSOCIATES (1981) LIMITED

CLAIM LOCATIONS

CG PROPERTY



NAD 83 ZONE 8, 105D/09

In 1993, prospector Brian Carter staked the historical CG and Carter Gulch claims. Prospecting on those claims identified fractured and re-healed rusty quartz, samples of which returned up to 46,404 ppb gold, 307 ppm silver, 799 ppm copper and 11,716 ppm lead (Carter, 1995).

In 1994, Carter did more prospecting and collected a total of 66 rock samples around a ridgetop on his claims. Visible gold was found in quartz veined shear zones and angular quartz float. The best results were 141,900 ppb gold, 12,770 ppm lead, 10,684 ppm copper, 1,779 ppm arsenic and 25.5 ppm silver from the Carter Gulch (CG) showing (Carter, 1995).

In 2003, independent prospector Ron Berdahl conducted a reconnaissance program in the area. Rock, soil and silt samples were collected around the CG showing and from nearby creeks. Rock sampling yielded up to 562 ppb gold, while silt and soil samples returned up to 33 ppb gold. (Berdahl, 2004).

In 2004, another prospecting and soil geochemical program was conducted by Berdahl. Prospecting discovered a new visible gold showing (Peppy showing) 1,500 m east-southeast of the CG showing. Rock samples from the Peppy showing yielding up to 24,997 ppb gold and greater than 10,000 ppm lead. Soil sampling returned up to 136 ppb gold (Berdahl, 2005).

In 2005, Berdahl completed more prospecting and soil sampling on historical claims, most of which subsequently lapsed and were restaked as the current CG property. Soil sampling was hindered by permafrost, but still returned anomalous values up to 296 ppb gold around the CG and Peppy showings (Berdahl, 2006). Elevated values were also returned for lead and arsenic but they did not correlate with gold anomalies.

In 2009, soil geochemical and geophysical surveys were completed by Berdahl around the CG and Peppy showings. Soil sampling focussed on the two showings, returning peak values of 251 ppb and 24.9 ppb gold at the CG and Peppy showings, respectively. Very-Low-Frequency electromagnetic (VLF) and proton magnetometer surveys were completed over both showings. VLF data was never compiled. Interpretation of data from the magnetometer surveys appear in the Geophysics section of this report, while figures and additional information can be found in Berdahl, 2009.

All of Berdahl's claims, except for two Kiyoko claims, which cover the CG showing, were allowed to lapse without further work.

In July of 2016, Strategic Metals staked the current CG claims around the Kiyoko claims.

GEOMORPHOLOGY AND CLIMATE

The CG property is situated on the Yukon Plateau of southern Yukon. Tributaries of the M'Clintock River and Michie Creek drain the property. Michie Creek and M'Clintock River are tributaries of the Teslin River, part of the Yukon River watershed.

The property lies 15 km northeast of Marsh Lake along an unnamed ridge system. Local topography features broad ridges that are topped with multiple knolls and incised by headwater

creeks. Elevations on the property range from approximately 1,005 to 1,554 m above sea level (asl). Outcrop is restricted to knolls, ridgetops and steep slopes.

Treeline lies at approximately 1,250 m asl on the property. Vegetation consists of stunted spruce and aspen trees at lower elevations, giving way to buckbrush, grasses and moss above treeline. The property was glaciated during the Late Pleistocene, with ice sheets in the area migrating to the northwest through large valleys (Duk-Rodkin, 1999).

The climate is typical of northern continental regions with long, cold winters, truncated fall and spring seasons and short, mild summers. The property is mostly snow free from late May to late September.

REGIONAL GEOLOGY

The CG property straddles a thrust fault separating the Stikinia Terrane (STT) to the southwest from the Cache Creek Terrane (CCT) to the northeast, as shown on Figure 3. The CCT comprises a variety of Carboniferous to Lower Jurassic metavolcanic, metasedimentary and metaplutonic rocks, developed from accretionary fore-arc environments (Bickerton, 2014; Bickerton et al., 2013). The STT represents a Paleozoic to Mesozoic island arc composed of metavolcanic, metasedimentary and metaplutonic rocks. The CCT is an exotic fore-arc package that was enclosed by the impingement of STT and Quesnellia island arc terranes during accretion.

A sedimentary basin, known as the Whitehorse Trough, overlaps the CCT and STT. This trough is composed of fore-arc basin metasediments (Mihalynuk, 2004).

In 2003, Gordey and Makepeace completed a Yukon-wide geological compilation that updated lithological unit names in the area. The Yukon Geological Survey (YGS) maintains a website illustrating regional geology, which is periodically updated when new information becomes available (YGS, 2016). The main lithological units are described below in Table I, while regional geology is shown on Figure 4.

Table I – Lithological Units (Gordey and Makepeace, 2003)

Unit Name	Age	Map Name	Description
Rhyolite Creek	Lower Paleogene	PRC1	Felsic volcanic rocks (light grey, green, maroon, purple and black rhyolite and dacite; locally flow banded; commonly a breccia with clasts of rhyolite within a crystal-rich matrix; may include intrusive equivalents.
Whitehorse Suite	Early Cretaceous	mKgW	Grey, medium to coarse-grained, generally equigranular granitic rocks of intermediate composition (biotite-hornblende granodiorite, hornblende quartz diorite and hornblende diorite; leucocratic, biotite hornblende granodiorite

STRATEGIC METALS LTD.

FIGURE 3

ARCHER, CATHRO & ASSOCIATES (1981) LIMITED

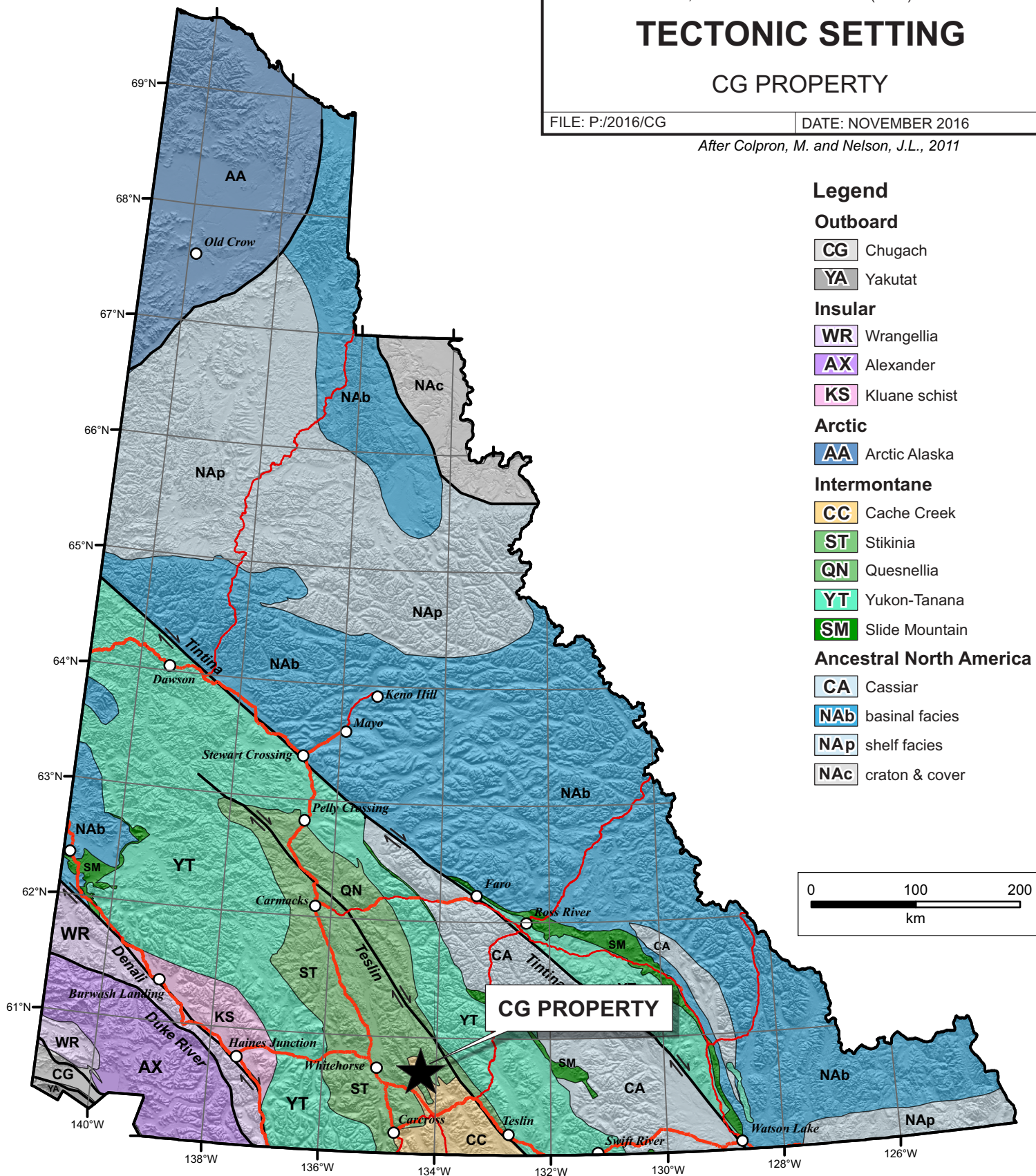
TECTONIC SETTING

CG PROPERTY

FILE: P:/2016/CG

DATE: NOVEMBER 2016

After Colpron, M. and Nelson, J.L., 2011



Legend

Outboard

- CG Chugach
- YA Yakutat

Insular

- WR Wrangellia
- AX Alexander
- KS Kluane schist

Arctic

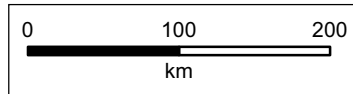
- AA Arctic Alaska

Intermontane

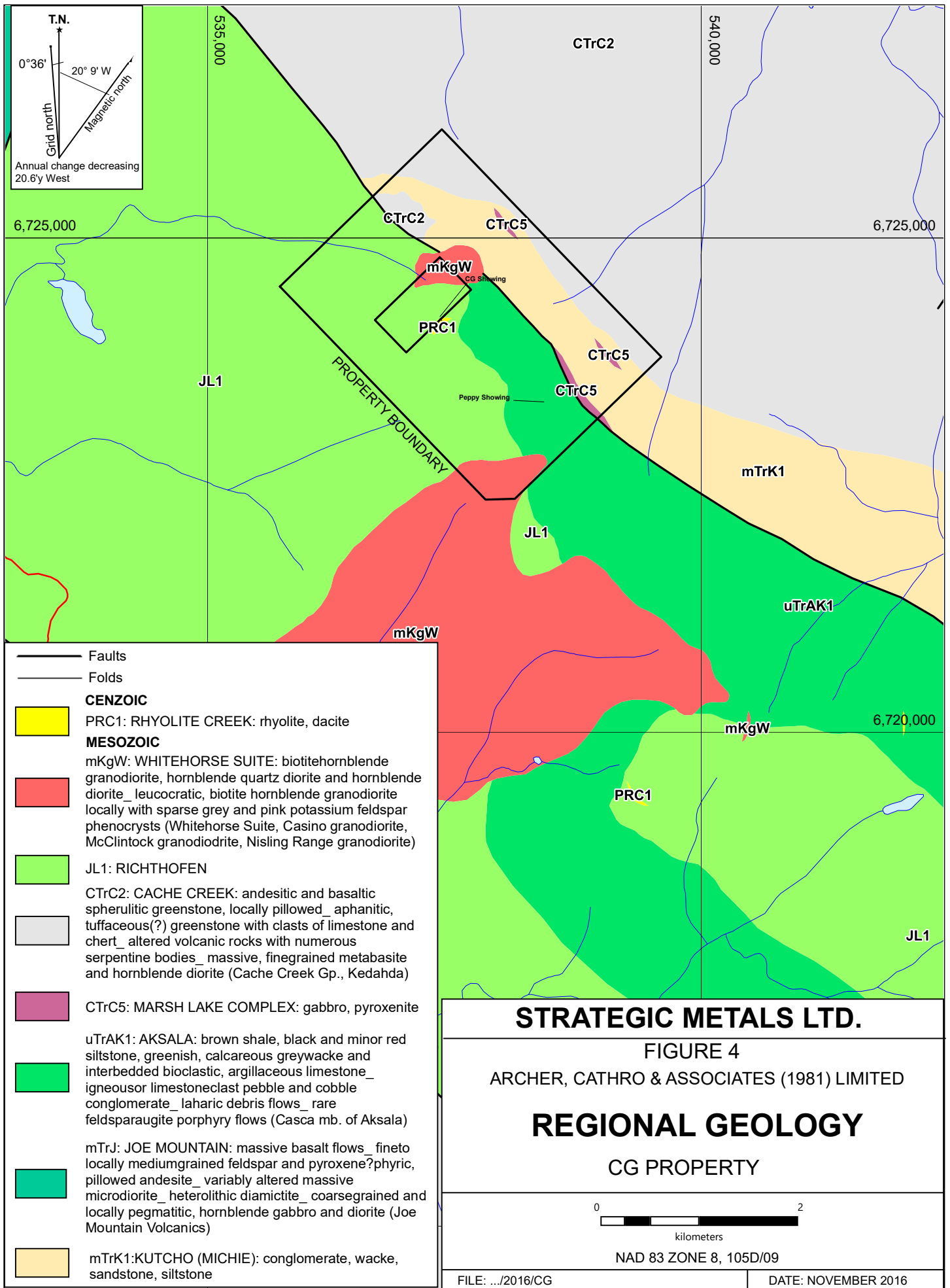
- CC Cache Creek
- ST Stikinia
- QN Quesnellia
- YT Yukon-Tanana
- SM Slide Mountain

Ancestral North America

- CA Cassiar
- NAb basinal facies
- NAp shelf facies
- NAC craton & cover



CG PROPERTY



			locally with sparse grey and pink potassium feldspar phenocrysts (Whitehorse Suite, Casino granodiorite, McClintock granodiorite)
Laberge	Lower to Middle Jurassic	JL1	Predominantly turbiditic sandstone-siltstone-mudstone (well-bedded, turbiditic sandstone-siltstone-mudstone; dark weathering, massive to finely laminated mudstone and limy mudstone; thick-bedded to massive lenses of polymictic cobble to boulder conglomerate; lithic sandstone; minor limestone (Richthofen formation)
Kutcho	Middle Triassic	mTrK(1)	Dark grey, fine-grained siltstone; buff, coarse-grained calc-lithic sandstone; green-grey wacke to pebble polymictic orthoconglomerate; fine-grained siltstone locally interbedded with thin, argillaceous limestone beds; carbonate-rich debris flows and rare olistoliths(?) (Michie formation)
Cache Creek	Carboniferous to Triassic	CTrC2	Oceanic assemblage of volcanic rocks (andesitic and basaltic spherulitic greenstone, locally pillowed; aphanitic, tuffaceous (?) greenstone with clasts of limestone and chert; altered volcanic rocks with numerous serpentine bodies; massive, fine-grained metabasite and hornblende diorite (Cache Creek Group)
		CTrC5	Light green to grey-green, medium to coarse-grained to porphyritic gabbro; medium-grained clinopyroxenite; fine to medium-grained diorite; olivine-phyric diabase (Marsh Lake complex)
Aksala	Middle Triassic	uTrAKc	Mixed clastic-carbonate assemblage divisible into three dominant facies including calcareous greywacke (brown shale, black and minor red siltstone, greenish, calcareous greywacke and interbedded bioclastic, argillaceous limestone-clast pebble and cobble conglomerate; lahar debris flows; rare feldspar-augite porphyry flows (Aksala formation)
Joe Mountain	Middle Triassic	mTrJ1	Basalt (massive basalt flows; fine to locally medium-grained feldspar and pyroxene?-phyric, pillowed andesite; variably altered massive microdiorite; heterolithic diamictite (Joe Mountain formation)

Regional-scale mapping shows the CG property covers four stratigraphic units and two intrusive units. South of the major northwesterly trending thrust fault, dominantly clastic sediments of the Richthofen Formation overlie carbonates and greywackes of the Aksala Formation. Northeast of the thrust fault, Cache Creek Group volcanics cap Kutcho Group sediments.

Northwesterly elongated lenses of Marsh Lake Complex gabbro, diorite and diabase are found along the thrust fault and within the Kutcho Group sediments. A plug of Whitehorse Suite granodiorite is emplaced along the thrust fault, while a large Whitehorse Suite pluton intrudes the Richthofen and Aksala formations south of the thrust.

PROPERTY GEOLOGY

From 1994 to 2009, geological mapping was conducted by prospectors across parts of the current property. The following descriptions are based on observations made by those prospectors.

The most common rock units reported are andesite and argillite forming outcrops along the main ridgeline. At the CG showing, siltstone, shale and agglomerate are found sporadically across the ridgetop, near the quartz vein exposure and mineralized float. Northwesterly trending, moderately dipping shear zones cross the ridgetop and extend down its northern slope. At the Peppy showing argillite occurs with quartz veins and float.

MINERALIZATION

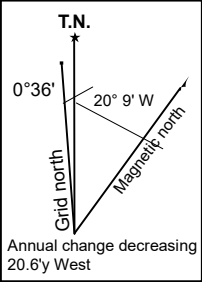
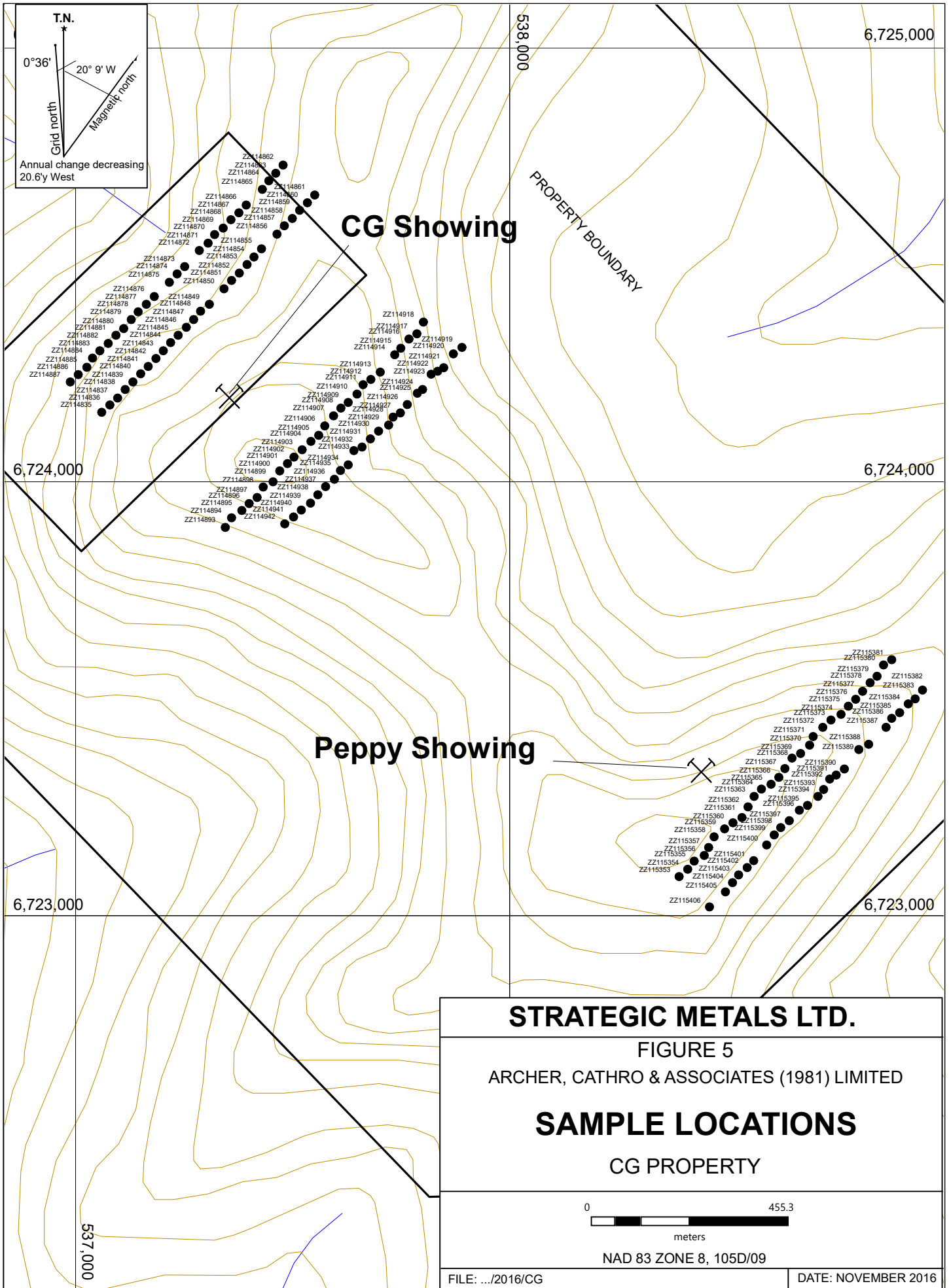
Mineralization on the property is hosted in quartz veins and shear zones within sedimentary and volcanic rock belonging to the Richthofen and Aksala formations. The mineralized quartz is white, grey or occasionally smoky and displays surficial oxidation with minor sulphides. Visible gold occurs in pits and vuggy cavities within quartz veins and float at the CG and Peppy showings.

In 2016, three rock samples were collected from the CG property. The best result is from a subcrop sample of magnetite skarn collected from near the Peppy showing, which yielded 2,680 ppm copper and less than 50 ppb gold. Rock sample locations are plotted on Figure 5. Rock Sample descriptions and Certificates of Analysis for the 2016 samples appear in Appendix III and Appendix IV, respectively.

All rock sample sites were marked with orange flagging tape labelled with the sample number and recorded using a handheld GPS unit. Rock samples were sent to ALS Minerals in North Vancouver, B.C., where they were crushed to 70% passing 2 mm before a 250 g split was pulverized to 85% passing 70 microns. Splits of the pulverized fractions were then dissolved in a four acid solution and analyzed for 48 elements using inductively coupled plasma-mass spectroscopy and inductively coupled plasma-atomic emission spectroscopy techniques (ME-MS61). An additional 30 g charge was further analysed for gold by fire assay with inductively coupled plasma-atomic emissions spectroscopy finish (Au-GRA21).

SOIL GEOCHEMISTRY

In 2016, Strategic Metals conducted a one day soil geochemical survey, collecting 157 soil samples. Permafrost and rocky terrain hindered soil sampling, which had an average sample depth of 20 cm. Figure 5 shows 2016 soil sample locations, while thematic results for gold, copper and lead are illustrated on Figures 6 and 8, along with historical sample values.



CG Showing

Peppy Showing

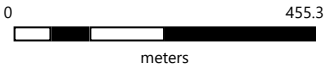
STRATEGIC METALS LTD.

FIGURE 5

ARCHER, CATHRO & ASSOCIATES (1981) LIMITED

SAMPLE LOCATIONS

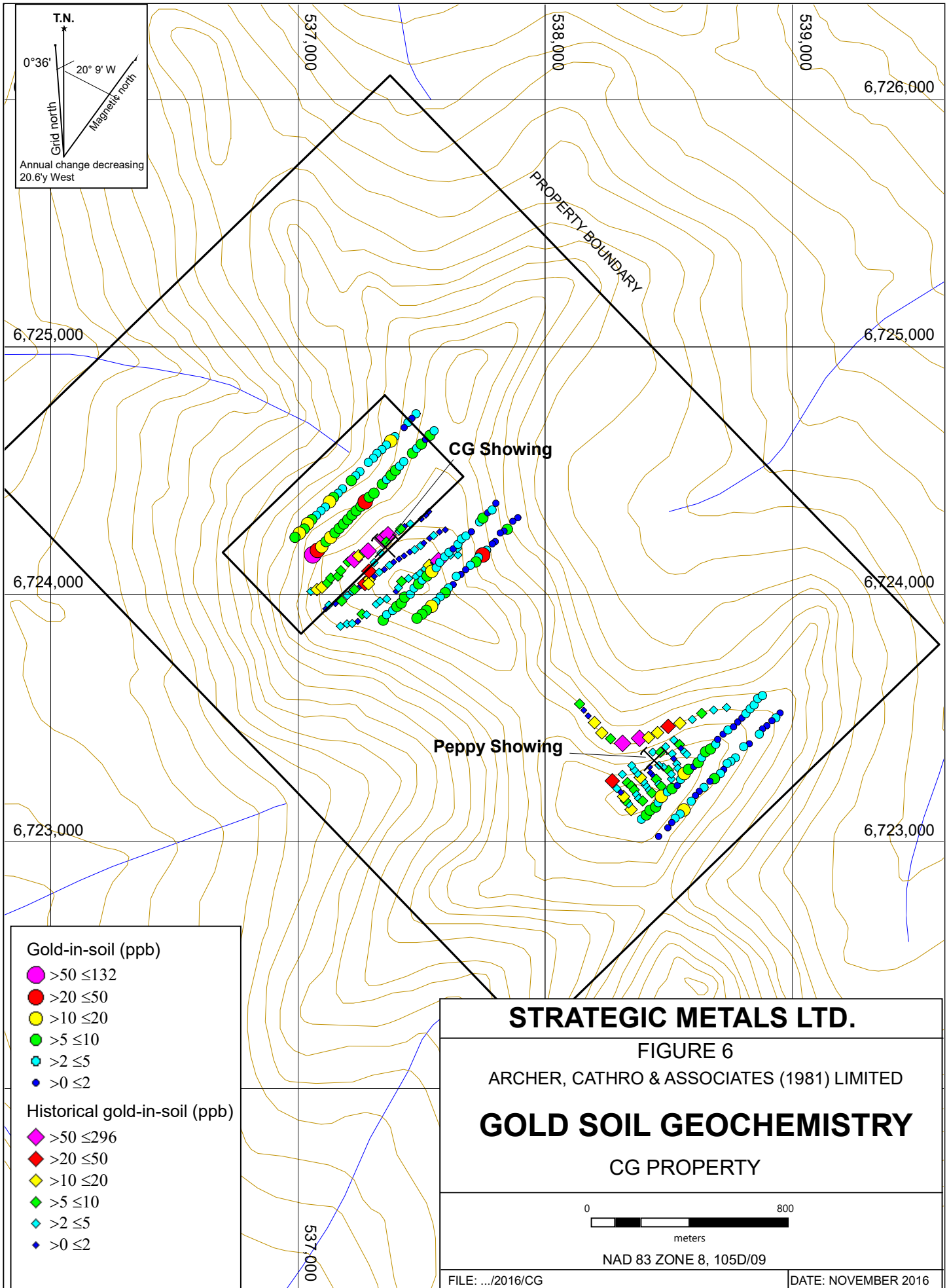
CG PROPERTY



NAD 83 ZONE 8, 105D/09

FILE: .../2016/CG

DATE: NOVEMBER 2016



T.N.
 0°36'
 20° 9' W
 Grid north
 Magnetic north
 Annual change decreasing
 20.6y West

PROPERTY BOUNDARY

CG Showing

Peppy Showing

- Gold-in-soil (ppb)**
- >50 ≤132
 - >20 ≤50
 - >10 ≤20
 - >5 ≤10
 - >2 ≤5
 - >0 ≤2
- Historical gold-in-soil (ppb)**
- ◆ >50 ≤296
 - ◆ >20 ≤50
 - ◆ >10 ≤20
 - ◆ >5 ≤10
 - ◆ >2 ≤5
 - ◆ >0 ≤2

STRATEGIC METALS LTD.

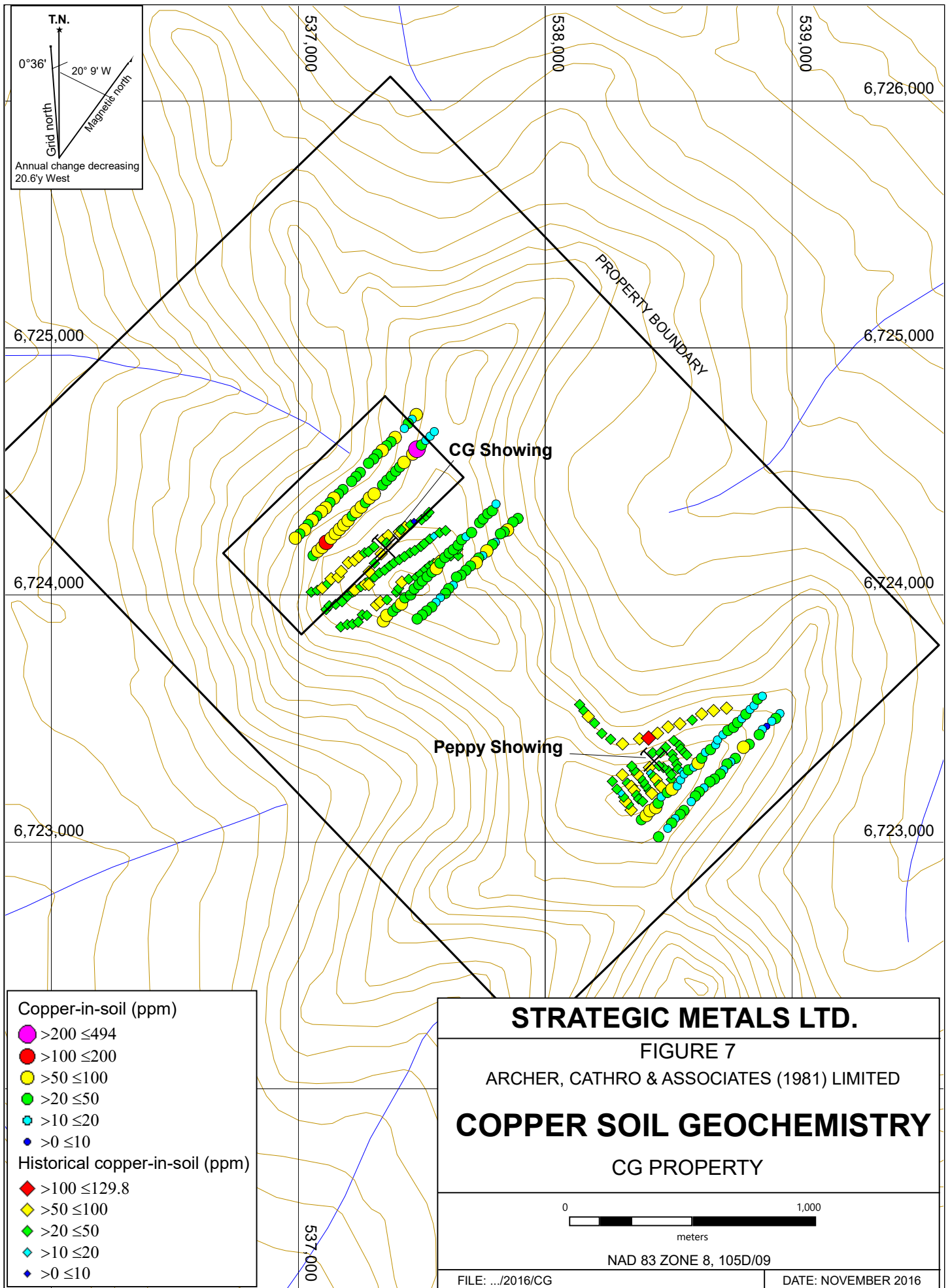
FIGURE 6
 ARCHER, CATHRO & ASSOCIATES (1981) LIMITED

GOLD SOIL GEOCHEMISTRY
 CG PROPERTY

0 800
 meters

NAD 83 ZONE 8, 105D/09

FILE: .../2016/CG DATE: NOVEMBER 2016



T.N.
 0°36' 20° 9' W
 Grid north
 Magnetic north
 Annual change decreasing
 20.6y West

6,725,000

6,724,000

6,723,000

537,000

538,000

539,000

6,726,000

6,725,000

6,724,000

6,723,000

PROPERTY BOUNDARY

CG Showing

Peppy Showing

- Copper-in-soil (ppm)
- >200 ≤494
 - >100 ≤200
 - >50 ≤100
 - >20 ≤50
 - >10 ≤20
 - >0 ≤10
- Historical copper-in-soil (ppm)
- ◆ >100 ≤129.8
 - ◆ >50 ≤100
 - ◆ >20 ≤50
 - ◆ >10 ≤20
 - ◆ >0 ≤10

STRATEGIC METALS LTD.

FIGURE 7

ARCHER, CATHRO & ASSOCIATES (1981) LIMITED

COPPER SOIL GEOCHEMISTRY

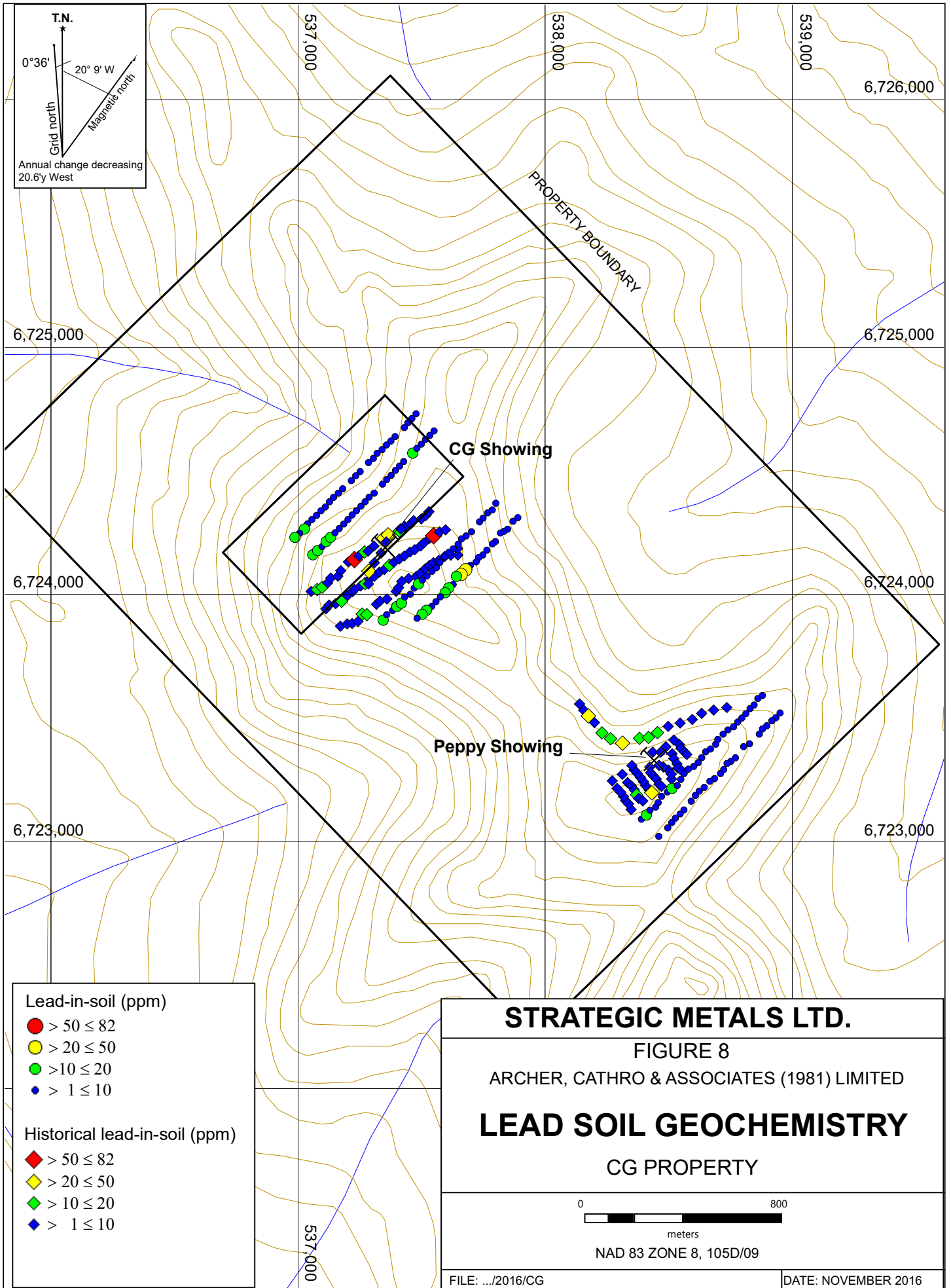
CG PROPERTY

0 1,000
 meters

NAD 83 ZONE 8, 105D/09

FILE: .../2016/CG DATE: NOVEMBER 2016

537,000



T.N.
 0°36'
 20° 9' W
 Grid north
 Magnetic north
 Annual change decreasing
 20.6y West

PROPERTY BOUNDARY

537,000

538,000

539,000

6,726,000

6,725,000

6,725,000

6,724,000

6,724,000

6,723,000

6,723,000

537,000

- Lead-in-soil (ppm)**
- > 50 ≤ 82
 - > 20 ≤ 50
 - > 10 ≤ 20
 - > 1 ≤ 10
- Historical lead-in-soil (ppm)**
- ◆ > 50 ≤ 82
 - ◆ > 20 ≤ 50
 - ◆ > 10 ≤ 20
 - ◆ > 1 ≤ 10

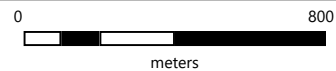
STRATEGIC METALS LTD.

FIGURE 8

ARCHER, CATHRO & ASSOCIATES (1981) LIMITED

LEAD SOIL GEOCHEMISTRY

CG PROPERTY



NAD 83 ZONE 8, 105D/09

The 2016 soil samples were collected at 25 m spacing along grid lines approximately 100 m apart. Handheld geotuls were used to collect samples, while locations were recorded using handheld GPS units. Sample sites are marked by aluminum tags inscribed with the sample numbers and affixed to 0.5 m wooden lath. Upon collection, samples were placed into individually pre-numbered Kraft paper bags. All samples were sent to ALS Minerals in North Vancouver, B.C., where they were dried, screened to -180 microns, and then analysed for 35 elements using the inductively coupled plasma-atomic emission spectroscopy technique (ME-ICP41). An additional 30 g charge was further analysed for gold by fire assay with inductively coupled plasma-atomic emissions spectroscopy finish (Au-ICP21). Certificates of Analysis appear in Appendix IV.

Anomalous thresholds and peak values for the metals of interest are listed in Table II.

Table II – Soil Geochemical Thresholds

Element	Weak	Moderate	Strong	2016 Peak results	Peak historical results
Gold (ppb)	$\geq 2 < 10$	$\geq 10 < 20$	$\geq 20 < 270$	132	296
Copper (ppm)	$\geq 10 < 50$	$\geq 50 < 100$	$\geq 100 < 495$	494	120.5
Lead (ppm)	$\geq 10 < 20$	$\geq 20 < 50$	$\geq 50 < 82$	30	81.6

Geochemical results from 2016 expanded the anomalous areas around the CG and Peppy showings.

The CG showing lies within a 500 by 500 m area extending down the north side of the main ridge. The anomaly is characterized by anomalous gold up to 252 ppb, with elevated copper and lead support reaching maximums of 117 and 30 ppm, respectively. The 2016 soil samples yielded up to 132 ppb gold, 117 ppm copper and 19 ppm lead. The showing and much of the soil anomaly lies within Berdahl's claims.

The Peppy showing is a 350 by 400 m area situated along the main ridgetop, southeast of the CG showing. The 2016 samples from this area yielded maximums of only 15 ppb gold, 72 ppm copper and 18 ppm lead, but peak values from historical samples were 296 ppb gold, 79 ppm copper and 21 ppm lead.

GEOPHYSICS

In 2009, magnetometer surveys were performed over the CG and Peppy showings. Survey lines were walked at 100 m and 25 m spacing across the CG and Peppy showings, respectively. Data interpretation from these surveys can be found below, while figures and additional information can be found in Berdahl (2009).

The magnetic survey at the CG showing identified three north-south trending magnetic highs across a 650 by 280 m area. The largest magnetic high is located 35 m to the west of the CG showing. The showing lies within an intermediate gradient zone between the western high and a large eastern low.

Magnetic data at the Peppy showing covered a 350 by 200 m area and revealed clusters of magnetic highs and lows. The Peppy showing is positioned within the intermediate gradient zone between a north-south trending magnetic low to the west and a magnetic high to the east.

DISCUSSION AND CONCLUSIONS

Work completed by Strategic Metals during the 2016 exploration program extended areas of anomalous soil geochemistry, but the effectiveness of sampling was hampered by the presence of permafrost and felsenmeer. Most of the anomalies are located near visible gold occurrences at the Peppy showing, which lies on the claims, and the CG showing which is located on two claims surrounded by the CG property.

Additional exploration is needed on the CG property to identify the source and ultimate extent of the soil geochemical anomalies. Follow up work should include but not be limited to: 1) closely spaced soil sampling between the known geochemical anomalies; 2) hand trenching along defined trends to identify bedrock sources and establish the character of the mineralization; and 3) detailed geological mapping and prospecting around the showings and geochemical anomalies to better understand the geological setting and trace known structures.

Respectfully submitted,

ARCHER, CATHRO & ASSOCIATES (1981) LIMITED

K. Willms, B.Sc.

REFERENCES

- Bickerton, L.
2014 The northern Cache Creek terrane: a record of Middle Triassic arc activity and Jurassic-Cretaceous terrane imbrication.
- Bickerton, L., Colpron, M., and Gibson, D.,
2013 Cache Creek terrane, Stikinia, and overlap assemblages of eastern Whitehorse (NTS 105D) and western Teslin (NTS 105C) map areas. In: Yukon Exploration and Geology 2012, K.E. MacFarlane, M.G. Nordling, and P.J. Sack (eds.), Yukon Geological Survey, p. 1-17
- Berdahl, R.
2004 Prospecting and geochemical report on Marsh Lake prospecting program, Carter Gulch Claims 1-2, Kiyoko Au Claims 1-2.
- 2005 Soil survey report on Marsh Lake prospecting program, Carter Gulch claims 1-2, Kiyoko Au claims 1-2, Peppy claims 1-4, Avian claims 1-6.
- 2006 Prospecting and geochemical report on Marsh Lake prospecting program, Peppy claims 1-4, Avian claims 1-6.
- 2009 Soil and geophysics survey report, Carter Gulch claims 1-2, Kiyoko Au claims 1-2, Peppy claims 1-4, Avian claims 1-6.
- Carter, B.
1995 Prospecting and geochemical assessment report, CG Claims 1-14, 15-18, Carter Gulch claims 1-2.
- Colpron, M. and Nelson, J. L.
2011 A digital atlas of terranes for the Northern Cordillera; Yukon Geological Survey and BC Geology Survey, BCGS GeoFile 2011-11
http://www.geology.gov.yk.ca/pdf/CanCord_terranes_2011.pdf
- Duk-Rodkin, A.
1999 Glacial limits map of Yukon Territory; Geological Survey of Canada Geoscience Map 1999-2.
- Gordey, S.P. and Makepeace, A.J.
2003 Yukon Digital Geology, version 2.0, S.P. Gordey and A.J. Makepeace (comp); Geological Survey of Canada, Open File 1749 and Yukon Geological Survey, Open File 2003-9 (D).
- Geological Survey of Canada
1985 Regional stream sediment and water geochemical reconnaissance data, Yukon Territory; Natural Resources Canada, Open File 1218. GEOSCAN ID 130125.

Mihalynuk et al.

2004 Geology and new mineralization in the Joss'alun belt, Atlin area.

Yukon Geological Survey

2016 Yukon Digital Bedrock Geology.

http://www.geology.gov.yu.ca/update_yukon_bedrock_geology_map.html,
accessed: October, 2016.

APPENDIX I
STATEMENT OF QUALIFICATIONS

STATEMENT OF QUALIFICATIONS

I, Kelson Willms, geologist, with business addresses in Whitehorse, Yukon Territory and Vancouver, British Columbia and residential address in Vancouver, British Columbia, hereby certify that:

1. I graduated from the University of British Columbia in 2016 with a B.Sc in Earth and Environmental Sciences.
2. From 2015 to present, I have been actively engaged in mineral exploration in the Yukon Territory and British Columbia.
3. I have interpreted all data resulting from work described in this report.

K.Willms, B.Sc.

APPENDIX II
STATEMENT OF EXPENDITURES

Statement of Expenditures
CG 1-32 Mineral Claims
November 14, 2016

Labour

D. Eaton (geologist) 7 hours August to November at \$120/hr	\$ 882.00
H. Burrell (geologist) 4 hours August to November at \$106/hr	445.20
J. Morton (geologist) 8 hours August to November at \$82/hr	688.80
K. Willms (field assistant) 21.5 hours August to November at \$57/hr	1,286.78
M. Kulla (field assistant) 8 hours August to November at \$51/hr	428.40
Q. Willms (field assistant) 8 August to November at \$45/hr	378.00
L. Corbett (expedite) 2 hours August to November at \$81/hr	170.10
L. Smith (office) 1 hour August to November at \$69/hr	72.45
S. Newman (office) 8.5 hours August to November at \$66/hr	<u>589.05</u>
	4,940.78

Expenses (including management)

Field room and board – 3 mandays @ \$180/manday	610.20
Capital Helicopters – 01.3 hours Bell 206B at \$1,075/hr plus fuel	1,763.39
ALS Chemex	<u>2,198.49</u>
	4,572.08

Total \$9,512.86

111 samples at \$9,512.86= \$85.70/sample

APPENDIX III
ROCK SAMPLE DESCRIPTIONS

Rock Sample DescriptionsProperty: CG (Carter Gulch)

Sample Number: K282989 UTM: 538572 mE Nad83, Zone 8

Elevation: 1521 m UTM: 6723348 mN

Comments: Subcrop sample of pale grey-green, calcite-hedenbergite(?) - magnetite skarn, (strongly magnetic w/ disseminated f.g. magnetite), collected from a ~30cm horizon within a large boulder.

Sample Number: K282990 UTM: 538652 mE Nad83, Zone 8

Elevation: 1500 m UTM: 6723418 mN

Comments: Specimen sample of orange-brown weathering, pale grey argillite? hosting numerous sub-parallel, mm-scale, quartz veinlets. Abundant live limonite, as well as patches of black manganese? on fx. surfaces.

Sample Number: K282991 UTM: 537812 mE Nad83, Zone 8

Elevation: 1495 m UTM: 6723707 mN

Comments: Specimen sample of brecciated and drusy quartz hosting cm-scale angular clasts of dark grey-green (volcanic) sandstone.

APPENDIX IV
CERTIFICATES OF ANALYSIS



ALS Canada Ltd.
 2103 Dollarton Hwy
 North Vancouver BC V7H 0A7
 Phone: +1 (604) 984 0221 Fax: +1 (604) 984 0218
 www.alsglobal.com

To: STRATEGIC METALS LTD.
 C/O ARCHER, CATHRO & ASSOCIATES (1981)
 LIMITED
 1016-510 W HASTINGS ST
 VANCOUVER BC V6B 1L8

Page: 1
 Total # Pages: 5 (A - C)
 Plus Appendix Pages
 Finalized Date: 26-SEP-2016
 Account: MTT

CERTIFICATE WH16139956

Project: CG

This report is for 157 Soil samples submitted to our lab in Whitehorse, YT, Canada on 22-AUG-2016.

The following have access to data associated with this certificate:

HEATHER BURRELL	JOAN MARIACHER
-----------------	----------------

SAMPLE PREPARATION	
ALS CODE	DESCRIPTION
WEI-21	Received Sample Weight
LOG-22	Sample login - Rcd w/o BarCode
SCR-41	Screen to -180um and save both

ANALYTICAL PROCEDURES		
ALS CODE	DESCRIPTION	INSTRUMENT
Au-ICP21	Au 30g FA ICP-AES Finish	ICP-AES
ME-ICP41	35 Element Aqua Regia ICP-AES	ICP-AES

To: STRATEGIC METALS LTD.
 ATTN: JOAN MARIACHER
 C/O ARCHER, CATHRO & ASSOCIATES (1981) LIMITED
 1016-510 W HASTINGS ST
 VANCOUVER BC V6B 1L8

This is the Final Report and supersedes any preliminary report with this certificate number. Results apply to samples as submitted. All pages of this report have been checked and approved for release.

***** See Appendix Page for comments regarding this certificate *****

Signature: 
 Colin Ramshaw, Vancouver Laboratory Manager



ALS Canada Ltd.
 2103 Dollarton Hwy
 North Vancouver BC V7H 0A7
 Phone: +1 (604) 984 0221 Fax: +1 (604) 984 0218
 www.alsglobal.com

To: STRATEGIC METALS LTD.
 C/O ARCHER, CATHRO & ASSOCIATES (1981)
 LIMITED
 1016-510 W HASTINGS ST
 VANCOUVER BC V6B 1L8

Page: 2 - A
 Total # Pages: 5 (A - C)
 Plus Appendix Pages
 Finalized Date: 26-SEP-2016
 Account: MTT

Project: CG

CERTIFICATE OF ANALYSIS WH16139956

Sample Description	Method Analyte Units LOR	WEI-21	Au-ICP21	ME-ICP41	ME-ICP41	ME-ICP41	ME-ICP41	ME-ICP41	ME-ICP41	ME-ICP41	ME-ICP41	ME-ICP41	ME-ICP41	ME-ICP41	ME-ICP41	ME-ICP41
		Recvd Wt. kg	Au ppm	Ag ppm	Al %	As ppm	B ppm	Ba ppm	Be ppm	Bi ppm	Ca %	Cd ppm	Co ppm	Cr ppm	Cu ppm	Fe %
		0.02	0.001	0.2	0.01	2	10	10	0.5	2	0.01	0.5	1	1	1	0.01
ZZ114835		0.28	0.132	<0.2	1.38	7	<10	100	<0.5	<2	0.35	<0.5	21	111	46	3.18
ZZ114836		0.34	0.033	<0.2	1.43	6	<10	100	<0.5	<2	0.38	<0.5	24	118	61	3.36
ZZ114837		0.34	0.014	<0.2	1.40	4	<10	110	<0.5	<2	0.30	<0.5	14	97	61	2.97
ZZ114838		0.24	0.007	0.2	2.05	7	<10	150	<0.5	<2	0.59	<0.5	21	96	117	3.68
ZZ114839		0.32	0.016	0.2	1.60	8	10	110	<0.5	<2	0.55	<0.5	26	153	80	3.46
ZZ114840		0.34	0.009	0.2	1.50	6	<10	170	<0.5	<2	0.90	<0.5	21	111	60	2.58
ZZ114841		0.22	0.008	<0.2	1.51	6	10	150	<0.5	<2	1.17	<0.5	20	133	82	2.72
ZZ114842		0.30	0.006	<0.2	1.59	7	<10	130	<0.5	<2	0.69	<0.5	19	126	81	2.95
ZZ114843		0.30	0.009	0.2	1.60	7	<10	130	<0.5	<2	0.56	<0.5	24	138	70	3.07
ZZ114844		0.40	0.008	<0.2	1.19	4	<10	80	<0.5	<2	0.31	<0.5	28	146	47	2.96
ZZ114845		0.28	0.009	<0.2	1.19	5	10	90	<0.5	<2	0.50	<0.5	20	139	59	2.69
ZZ114846		0.30	0.007	0.2	1.62	7	<10	140	<0.5	<2	0.60	<0.5	18	119	75	2.84
ZZ114847		0.38	0.031	<0.2	1.23	5	<10	110	<0.5	<2	0.32	<0.5	20	136	41	2.71
ZZ114848		0.24	0.008	<0.2	1.66	8	<10	130	<0.5	<2	0.46	<0.5	28	150	77	3.37
ZZ114849		0.42	0.008	<0.2	1.41	6	<10	140	<0.5	<2	0.39	<0.5	22	157	66	3.03
ZZ114850		0.38	0.005	<0.2	1.04	4	<10	80	<0.5	2	0.27	<0.5	21	147	33	2.68
ZZ114851		0.34	0.003	<0.2	0.88	4	<10	90	<0.5	<2	0.50	<0.5	12	75	47	1.70
ZZ114852		0.24	0.007	<0.2	1.37	6	<10	180	<0.5	<2	0.42	<0.5	14	96	39	2.23
ZZ114853		0.28	0.005	<0.2	1.01	5	<10	110	<0.5	<2	0.84	<0.5	18	54	38	1.74
ZZ114854		0.36	0.003	<0.2	1.31	3	<10	130	<0.5	<2	0.38	<0.5	16	119	33	2.72
ZZ114855		0.34	0.004	<0.2	1.25	5	<10	120	<0.5	<2	0.57	<0.5	28	173	53	2.88
ZZ114856		0.24	0.009	0.2	1.01	27	<10	100	0.6	<2	1.22	<0.5	12	73	83	1.90
ZZ114857		0.20	0.004	0.6	1.94	5	<10	150	0.9	<2	1.33	1.5	50	80	494	3.85
ZZ114858		0.32	0.005	<0.2	1.20	6	10	170	<0.5	<2	0.61	<0.5	33	200	33	3.04
ZZ114859		0.36	0.001	<0.2	1.25	4	<10	160	<0.5	<2	0.28	<0.5	21	148	12	2.63
ZZ114860		0.34	0.008	<0.2	1.15	3	<10	150	<0.5	3	0.39	<0.5	25	154	15	2.55
ZZ114861		0.22	0.002	<0.2	1.17	4	<10	330	<0.5	<2	0.40	<0.5	31	90	13	2.41
ZZ114862		0.20	0.002	0.2	0.90	2	<10	130	0.5	<2	3.28	<0.5	7	45	70	0.98
ZZ114863		0.34	0.001	<0.2	1.17	3	<10	190	<0.5	<2	0.30	<0.5	24	107	19	2.38
ZZ114864		0.28	0.002	<0.2	1.32	5	<10	90	<0.5	<2	0.21	<0.5	15	112	23	2.45
ZZ114865		0.26	0.001	<0.2	0.89	4	<10	140	<0.5	<2	0.27	0.5	24	148	12	2.74
ZZ114866		0.28	0.004	0.3	1.76	4	<10	230	0.6	<2	0.81	<0.5	31	116	67	3.03
ZZ114867		0.28	0.017	<0.2	1.42	4	<10	100	<0.5	<2	0.44	<0.5	29	134	37	2.84
ZZ114868		0.26	0.003	<0.2	1.53	5	<10	110	<0.5	<2	0.32	<0.5	20	158	23	3.44
ZZ114869		0.22	0.002	0.2	1.25	5	<10	150	<0.5	<2	0.41	1.2	37	102	75	2.62
ZZ114870		0.28	0.003	<0.2	1.07	5	10	80	<0.5	<2	0.27	<0.5	31	201	23	3.04
ZZ114871		0.20	0.002	<0.2	1.24	4	<10	120	<0.5	<2	0.48	<0.5	22	92	35	2.03
ZZ114872		0.24	0.004	<0.2	1.21	5	<10	160	<0.5	<2	0.56	<0.5	14	87	40	1.95
ZZ114873		0.24	0.002	<0.2	0.88	2	<10	130	<0.5	<2	0.29	<0.5	11	55	24	1.36
ZZ114874		0.36	0.004	<0.2	1.07	4	10	80	<0.5	<2	0.26	<0.5	27	199	26	2.98



ALS Canada Ltd.
 2103 Dollarton Hwy
 North Vancouver BC V7H 0A7
 Phone: +1 (604) 984 0221 Fax: +1 (604) 984 0218
 www.alsglobal.com

To: STRATEGIC METALS LTD.
 C/O ARCHER, CATHRO & ASSOCIATES (1981)
 LIMITED
 1016-510 W HASTINGS ST
 VANCOUVER BC V6B 1L8

Page: 2 - B
 Total # Pages: 5 (A - C)
 Plus Appendix Pages
 Finalized Date: 26-SEP-2016
 Account: MTT

Project: CG

CERTIFICATE OF ANALYSIS WH16139956

Sample Description	Method Analyte Units LOR	ME-ICP41	ME-ICP41	ME-ICP41	ME-ICP41	ME-ICP41	ME-ICP41	ME-ICP41	ME-ICP41	ME-ICP41	ME-ICP41	ME-ICP41	ME-ICP41	ME-ICP41	ME-ICP41	
		Ga	Hg	K	La	Mg	Mn	Mo	Na	Ni	P	Pb	S	Sb	Sc	Sr
		ppm	ppm	%	ppm	%	ppm	ppm	%	ppm	ppm	ppm	%	ppm	ppm	ppm
		10	1	0.01	10	0.01	5	1	0.01	1	10	2	0.01	2	1	1
ZZ114835		<10	<1	0.06	10	1.82	521	<1	0.02	150	470	17	0.03	<2	4	18
ZZ114836		<10	<1	0.04	10	2.29	623	<1	0.02	201	610	19	0.02	<2	5	20
ZZ114837		10	1	0.04	10	1.31	520	1	0.02	100	600	9	0.05	<2	3	18
ZZ114838		10	<1	0.05	10	1.70	815	<1	0.02	138	1070	11	0.06	<2	4	28
ZZ114839		<10	<1	0.04	10	2.69	634	<1	0.02	275	840	15	0.04	<2	5	26
ZZ114840		<10	<1	0.04	10	1.38	850	1	0.02	153	1210	8	0.09	<2	3	36
ZZ114841		<10	<1	0.04	10	1.98	558	<1	0.02	251	960	7	0.09	2	5	42
ZZ114842		<10	<1	0.04	10	1.84	566	<1	0.02	191	740	7	0.07	<2	5	35
ZZ114843		<10	<1	0.04	10	2.09	640	<1	0.02	200	880	9	0.05	<2	5	30
ZZ114844		<10	<1	0.05	10	2.38	550	<1	0.02	214	360	8	0.02	<2	4	20
ZZ114845		<10	<1	0.04	10	2.32	518	<1	0.02	212	780	7	0.05	<2	4	27
ZZ114846		<10	<1	0.06	10	1.85	546	<1	0.02	183	880	7	0.07	<2	5	30
ZZ114847		<10	1	0.04	10	2.35	445	<1	0.02	194	560	7	0.03	<2	4	19
ZZ114848		10	<1	0.06	10	2.77	715	<1	0.02	265	750	7	0.04	2	5	23
ZZ114849		<10	1	0.03	10	2.88	493	<1	0.02	285	590	7	0.04	<2	5	21
ZZ114850		<10	1	0.04	10	2.31	459	<1	0.01	206	550	5	0.04	2	2	14
ZZ114851		<10	1	0.03	10	1.10	352	<1	0.03	108	950	3	0.07	<2	1	22
ZZ114852		<10	1	0.04	10	1.02	434	<1	0.02	109	1430	6	0.09	<2	2	23
ZZ114853		<10	<1	0.03	10	0.59	867	<1	0.03	66	920	5	0.08	<2	2	27
ZZ114854		<10	<1	0.03	10	1.23	486	1	0.01	117	530	7	0.03	<2	2	18
ZZ114855		10	<1	0.04	10	2.38	607	1	0.01	232	640	6	0.04	<2	3	20
ZZ114856		<10	1	0.03	10	0.72	632	<1	0.02	146	1330	12	0.10	<2	3	87
ZZ114857		10	<1	0.02	10	0.55	2250	1	0.01	242	1760	9	0.10	<2	2	41
ZZ114858		<10	<1	0.03	10	3.55	634	<1	0.02	441	600	5	0.05	<2	4	24
ZZ114859		<10	<1	0.03	10	2.37	393	<1	0.01	208	310	5	0.02	<2	4	16
ZZ114860		<10	<1	0.03	10	2.61	435	<1	0.01	260	700	4	0.04	<2	3	21
ZZ114861		<10	<1	0.04	10	1.00	1410	1	0.01	103	450	9	0.02	<2	4	24
ZZ114862		<10	<1	0.01	10	0.32	432	<1	0.01	215	1600	2	0.20	<2	2	64
ZZ114863		<10	<1	0.04	10	1.01	794	<1	0.01	105	570	7	0.03	<2	2	17
ZZ114864		<10	1	0.03	<10	2.13	315	<1	0.02	161	550	2	0.05	<2	1	16
ZZ114865		<10	1	0.04	10	1.97	750	<1	0.02	180	620	5	0.02	<2	3	17
ZZ114866		10	<1	0.03	10	1.09	1150	<1	0.02	285	1220	8	0.07	2	3	32
ZZ114867		<10	<1	0.03	10	2.38	840	<1	0.02	243	710	4	0.04	2	3	20
ZZ114868		10	1	0.03	10	1.98	412	<1	0.01	192	540	6	0.01	<2	3	18
ZZ114869		<10	1	0.04	10	0.79	1675	1	0.02	213	1080	9	0.03	<2	2	19
ZZ114870		<10	<1	0.02	<10	3.89	507	<1	0.01	370	460	4	0.01	<2	3	15
ZZ114871		<10	1	0.04	10	0.96	634	1	0.02	86	1430	5	0.07	<2	1	23
ZZ114872		<10	1	0.03	10	1.02	366	<1	0.02	120	1340	5	0.07	<2	2	28
ZZ114873		<10	1	0.02	10	0.54	377	<1	0.02	72	1140	4	0.07	<2	<1	20
ZZ114874		<10	<1	0.03	<10	3.89	454	<1	0.02	364	480	3	0.01	<2	4	14



ALS Canada Ltd.
 2103 Dollarton Hwy
 North Vancouver BC V7H 0A7
 Phone: +1 (604) 984 0221 Fax: +1 (604) 984 0218
 www.alsglobal.com

To: STRATEGIC METALS LTD.
 C/O ARCHER, CATHRO & ASSOCIATES (1981)
 LIMITED
 1016-510 W HASTINGS ST
 VANCOUVER BC V6B 1L8

Page: 2 - C
 Total # Pages: 5 (A - C)
 Plus Appendix Pages
 Finalized Date: 26-SEP-2016
 Account: MTT

Project: CG

CERTIFICATE OF ANALYSIS WH16139956

Sample Description	Method Analyte Units LOR	ME-ICP41	ME-ICP41	ME-ICP41	ME-ICP41	ME-ICP41	ME-ICP41	ME-ICP41
		Th	Ti	Ti	U	V	W	Zn
		ppm	%	ppm	ppm	ppm	ppm	ppm
		20	0.01	10	10	1	10	2
ZZ114835		<20	0.07	<10	<10	61	<10	51
ZZ114836		<20	0.08	<10	<10	65	<10	59
ZZ114837		<20	0.07	<10	<10	67	<10	59
ZZ114838		<20	0.04	<10	<10	73	<10	67
ZZ114839		<20	0.06	<10	<10	65	<10	58
ZZ114840		<20	0.04	<10	<10	53	<10	54
ZZ114841		<20	0.04	<10	<10	52	<10	52
ZZ114842		<20	0.05	<10	<10	60	<10	47
ZZ114843		<20	0.05	<10	<10	61	<10	51
ZZ114844		<20	0.07	<10	<10	56	<10	50
ZZ114845		<20	0.05	<10	<10	53	<10	46
ZZ114846		<20	0.04	<10	<10	58	<10	47
ZZ114847		<20	0.06	<10	<10	53	<10	40
ZZ114848		<20	0.06	<10	<10	67	<10	53
ZZ114849		<20	0.05	<10	<10	55	<10	43
ZZ114850		<20	0.05	<10	<10	51	<10	42
ZZ114851		<20	0.03	<10	<10	34	<10	27
ZZ114852		<20	0.03	<10	<10	45	<10	37
ZZ114853		<20	0.04	<10	<10	38	<10	35
ZZ114854		<20	0.07	<10	<10	59	<10	43
ZZ114855		<20	0.06	<10	<10	53	<10	52
ZZ114856		<20	0.03	<10	<10	36	<10	29
ZZ114857		<20	0.03	<10	<10	68	<10	132
ZZ114858		<20	0.04	<10	<10	48	<10	36
ZZ114859		<20	0.07	<10	<10	50	<10	31
ZZ114860		<20	0.04	<10	<10	45	<10	33
ZZ114861		<20	0.08	<10	<10	54	<10	34
ZZ114862		<20	0.02	<10	<10	14	<10	12
ZZ114863		<20	0.07	<10	<10	49	<10	45
ZZ114864		<20	0.03	<10	<10	46	<10	29
ZZ114865		<20	0.07	<10	<10	45	<10	47
ZZ114866		<20	0.03	<10	<10	52	<10	74
ZZ114867		<20	0.05	<10	<10	51	<10	48
ZZ114868		<20	0.06	<10	<10	63	<10	47
ZZ114869		<20	0.04	<10	<10	47	<10	118
ZZ114870		<20	0.04	<10	<10	46	<10	42
ZZ114871		<20	0.02	<10	<10	44	<10	37
ZZ114872		<20	0.03	<10	<10	38	<10	27
ZZ114873		<20	0.01	<10	<10	28	<10	19
ZZ114874		<20	0.05	<10	<10	46	<10	42



ALS Canada Ltd.
 2103 Dollarton Hwy
 North Vancouver BC V7H 0A7
 Phone: +1 (604) 984 0221 Fax: +1 (604) 984 0218
 www.alsglobal.com

To: STRATEGIC METALS LTD.
 C/O ARCHER, CATHRO & ASSOCIATES (1981)
 LIMITED
 1016-510 W HASTINGS ST
 VANCOUVER BC V6B 1L8

Page: 3 - A
 Total # Pages: 5 (A - C)
 Plus Appendix Pages
 Finalized Date: 26-SEP-2016
 Account: MTT

Project: CG

CERTIFICATE OF ANALYSIS WH16139956

Sample Description	Method Analyte Units LOR	WEI-21	Au-ICP21	ME-ICP41	ME-ICP41	ME-ICP41	ME-ICP41	ME-ICP41	ME-ICP41	ME-ICP41	ME-ICP41	ME-ICP41	ME-ICP41	ME-ICP41	ME-ICP41	ME-ICP41	
		Recvd Wt. kg	Au ppm	Ag ppm	Al %	As ppm	B ppm	Ba ppm	Be ppm	Bi ppm	Ca %	Cd ppm	Co ppm	Cr ppm	Cu ppm	Fe %	
		0.02	0.001	0.2	0.01	2	10	10	0.5	2	0.01	0.5	1	1	1	0.01	
ZZ114875		0.22	0.006	0.2	1.32	5	<10	100	<0.5	<2	0.29	<0.5	18	113	43	2.48	
ZZ114876		0.24	0.004	<0.2	1.16	5	<10	130	<0.5	<2	0.30	<0.5	26	107	38	2.45	
ZZ114877		0.30	0.004	<0.2	1.35	3	<10	130	<0.5	<2	0.35	<0.5	12	105	46	2.27	
ZZ114878		0.32	0.007	<0.2	1.52	4	<10	140	<0.5	<2	0.70	<0.5	18	131	75	2.94	
ZZ114879		0.32	0.011	<0.2	1.17	5	<10	110	<0.5	<2	0.54	<0.5	19	124	41	2.43	
ZZ114880		0.28	0.004	<0.2	1.15	4	<10	120	<0.5	<2	0.63	<0.5	40	114	55	2.40	
ZZ114881		0.32	0.003	<0.2	1.53	3	<10	170	<0.5	<2	0.52	<0.5	17	103	63	2.55	
ZZ114882		0.26	0.004	<0.2	1.09	2	<10	140	<0.5	<2	0.38	<0.5	11	61	39	1.76	
ZZ114883		0.40	0.005	<0.2	1.34	5	<10	160	<0.5	<2	0.45	<0.5	14	103	53	2.45	
ZZ114884		0.24	0.016	0.2	1.26	5	<10	140	<0.5	<2	0.34	<0.5	23	118	46	2.70	
ZZ114885		0.34	0.009	<0.2	1.32	8	<10	130	<0.5	<2	0.55	<0.5	23	141	51	2.90	
ZZ114886		0.24	0.012	<0.2	1.33	4	<10	120	<0.5	<2	0.30	<0.5	18	111	47	2.93	
ZZ114887		0.22	0.005	<0.2	1.68	6	<10	140	<0.5	<2	0.52	<0.5	19	101	77	3.20	
ZZ114893		0.32	0.007	0.2	1.35	10	<10	180	<0.5	<2	1.01	0.6	32	90	84	2.78	
ZZ114894		0.28	0.004	<0.2	1.21	6	<10	120	<0.5	<2	0.65	0.5	25	131	52	2.51	
ZZ114895		0.22	0.003	<0.2	0.99	6	10	110	<0.5	<2	1.00	<0.5	22	117	39	2.40	
ZZ114896		0.22	0.008	<0.2	1.23	7	10	160	<0.5	<2	0.98	<0.5	22	119	40	2.58	
ZZ114897		0.26	0.005	0.3	1.17	7	<10	200	<0.5	<2	1.36	<0.5	21	84	79	2.35	
ZZ114898		0.22	0.005	0.2	1.42	5	<10	130	<0.5	<2	0.26	<0.5	11	77	32	2.42	
ZZ114899		0.28	0.002	<0.2	1.28	4	<10	170	<0.5	<2	0.54	<0.5	30	<0.5	174	29	3.15
ZZ114900		0.24	0.003	<0.2	0.87	4	<10	180	<0.5	<2	0.61	<0.5	33	165	24	2.45	
ZZ114901		0.22	0.005	<0.2	1.22	7	<10	170	<0.5	<2	0.30	<0.5	20	125	24	2.71	
ZZ114902		0.24	0.002	<0.2	1.35	4	<10	190	<0.5	<2	0.71	<0.5	24	127	28	2.85	
ZZ114903		0.28	0.008	<0.2	1.16	6	<10	100	<0.5	<2	0.37	<0.5	16	142	40	2.35	
ZZ114904		0.20	0.017	<0.2	1.34	14	<10	120	<0.5	<2	0.27	<0.5	18	125	28	2.63	
ZZ114905		0.24	0.002	0.2	0.99	4	<10	190	<0.5	<2	1.33	<0.5	18	73	54	1.63	
ZZ114906		0.26	0.003	<0.2	1.56	5	<10	150	<0.5	<2	0.40	<0.5	14	102	45	3.00	
ZZ114907		0.26	0.003	<0.2	1.29	5	<10	110	<0.5	<2	0.33	<0.5	22	124	36	2.61	
ZZ114908		0.32	0.002	<0.2	1.15	4	<10	130	<0.5	<2	0.36	<0.5	21	151	29	2.53	
ZZ114909		0.28	0.001	<0.2	1.01	5	10	110	<0.5	<2	0.35	<0.5	26	186	27	2.73	
ZZ114910		0.28	0.004	<0.2	1.18	6	<10	120	<0.5	<2	0.34	<0.5	26	160	26	2.83	
ZZ114911		0.20	0.004	<0.2	0.99	6	<10	110	<0.5	<2	0.51	<0.5	24	156	28	2.51	
ZZ114912		0.28	0.003	<0.2	1.12	7	<10	80	<0.5	<2	0.27	<0.5	18	156	19	2.87	
ZZ114913		0.30	0.001	<0.2	1.12	7	<10	100	<0.5	<2	0.32	<0.5	27	165	23	3.09	
ZZ114914		0.24	0.002	<0.2	1.04	4	<10	180	<0.5	<2	0.46	<0.5	34	179	27	2.64	
ZZ114915		0.24	0.006	0.2	1.15	3	<10	150	<0.5	<2	0.43	<0.5	22	150	31	2.73	
ZZ114916		0.26	0.001	<0.2	1.00	3	<10	110	<0.5	<2	0.40	0.5	30	133	20	2.68	
ZZ114917		0.20	0.002	<0.2	1.22	5	<10	110	<0.5	<2	0.64	<0.5	25	137	32	2.64	
ZZ114918		0.24	0.001	<0.2	0.93	3	10	80	<0.5	<2	0.54	<0.5	27	182	12	2.75	
ZZ114919		0.16	0.001	<0.2	0.84	3	<10	90	<0.5	<2	0.34	<0.5	14	78	23	1.65	



ALS Canada Ltd.
 2103 Dollarton Hwy
 North Vancouver BC V7H 0A7
 Phone: +1 (604) 984 0221 Fax: +1 (604) 984 0218
 www.alsglobal.com

To: STRATEGIC METALS LTD.
 C/O ARCHER, CATHRO & ASSOCIATES (1981)
 LIMITED
 1016-510 W HASTINGS ST
 VANCOUVER BC V6B 1L8

Page: 3 - B
 Total # Pages: 5 (A - C)
 Plus Appendix Pages
 Finalized Date: 26-SEP-2016
 Account: MTT

Project: CG

CERTIFICATE OF ANALYSIS WH16139956

Sample Description	Method Analyte Units LOR	ME-ICP41	ME-ICP41	ME-ICP41	ME-ICP41	ME-ICP41	ME-ICP41	ME-ICP41	ME-ICP41	ME-ICP41	ME-ICP41	ME-ICP41	ME-ICP41	ME-ICP41	ME-ICP41	
		Ga	Hg	K	La	Mg	Mn	Mo	Na	Ni	P	Pb	S	Sb	Sc	Sr
		ppm	ppm	%	ppm	%	ppm	ppm	%	ppm	ppm	ppm	%	ppm	ppm	ppm
		10	1	0.01	10	0.01	5	1	0.01	1	10	2	0.01	2	1	1
ZZ114875		<10	1	0.03	10	1.84	447	<1	0.02	163	770	4	0.02	<2	3	19
ZZ114876		<10	1	0.04	10	0.99	855	1	0.02	92	940	7	0.04	<2	3	20
ZZ114877		<10	1	0.03	10	1.26	359	<1	0.02	93	1120	4	0.05	<2	3	21
ZZ114878		<10	<1	0.04	10	1.99	523	<1	0.02	223	850	4	0.06	<2	4	28
ZZ114879		<10	1	0.03	10	2.12	443	<1	0.02	214	900	5	0.05	<2	3	22
ZZ114880		<10	<1	0.04	10	0.81	1220	1	0.02	129	1430	7	0.08	<2	1	25
ZZ114881		<10	1	0.04	10	1.38	512	<1	0.02	149	950	7	0.05	<2	3	28
ZZ114882		<10	1	0.02	10	0.86	300	<1	0.03	104	620	6	0.04	<2	2	20
ZZ114883		<10	1	0.04	10	1.59	367	<1	0.02	197	690	6	0.03	<2	3	22
ZZ114884		<10	<1	0.08	10	1.26	447	1	0.01	161	460	7	0.03	<2	4	21
ZZ114885		<10	<1	0.06	10	2.42	581	1	0.02	289	630	10	0.04	<2	4	24
ZZ114886		<10	1	0.06	10	1.45	514	1	0.01	126	460	8	0.02	<2	3	16
ZZ114887		10	1	0.05	10	1.21	719	1	0.01	117	780	10	0.03	<2	3	24
ZZ114893		<10	<1	0.11	10	1.04	1095	1	0.02	152	1370	14	0.09	<2	3	41
ZZ114894		<10	<1	0.06	10	1.39	750	1	0.02	208	820	9	0.05	<2	3	25
ZZ114895		<10	1	0.10	10	1.49	634	1	0.02	173	900	7	0.08	<2	3	31
ZZ114896		<10	1	0.11	10	1.50	668	<1	0.02	159	910	10	0.07	<2	3	35
ZZ114897		<10	<1	0.06	10	0.83	932	1	0.02	211	1130	11	0.09	<2	2	41
ZZ114898		<10	<1	0.03	10	0.78	413	1	0.02	80	540	7	0.02	<2	2	17
ZZ114899		<10	1	0.04	10	1.74	750	<1	0.02	206	1130	9	0.05	<2	3	26
ZZ114900		<10	<1	0.08	10	1.62	542	1	0.02	218	1190	8	0.07	<2	2	30
ZZ114901		<10	<1	0.04	10	2.11	443	1	0.02	204	460	10	0.02	<2	3	18
ZZ114902		<10	1	0.04	10	1.29	664	1	0.02	143	730	7	0.06	<2	3	26
ZZ114903		<10	1	0.03	10	2.21	319	<1	0.02	228	750	7	0.03	<2	1	16
ZZ114904		<10	<1	0.03	10	1.70	464	1	0.02	164	570	4	0.04	<2	3	19
ZZ114905		<10	1	0.03	10	0.80	395	1	0.02	160	1290	5	0.14	<2	2	54
ZZ114906		<10	1	0.05	10	1.58	516	1	0.01	122	420	7	0.02	<2	5	19
ZZ114907		<10	1	0.10	10	1.51	534	<1	0.02	131	400	7	0.01	<2	4	19
ZZ114908		<10	<1	0.06	10	1.79	470	<1	0.02	174	610	6	0.02	<2	3	20
ZZ114909		<10	<1	0.03	10	2.49	474	1	0.02	246	430	3	0.03	2	3	17
ZZ114910		<10	1	0.07	10	2.65	478	<1	0.02	246	340	5	0.02	<2	4	21
ZZ114911		<10	<1	0.05	10	2.10	549	1	0.02	206	610	4	0.04	3	3	30
ZZ114912		<10	1	0.04	10	2.13	353	<1	0.02	186	250	4	0.02	<2	3	14
ZZ114913		<10	<1	0.05	10	1.75	672	<1	0.02	172	470	4	0.03	<2	3	18
ZZ114914		<10	<1	0.04	10	1.89	888	<1	0.02	294	990	4	0.06	<2	2	25
ZZ114915		<10	<1	0.04	10	1.92	612	<1	0.02	207	710	6	0.04	<2	3	21
ZZ114916		<10	1	0.04	10	1.49	787	<1	0.02	143	730	5	0.02	<2	2	21
ZZ114917		<10	<1	0.04	10	1.39	845	<1	0.02	176	730	4	0.04	<2	3	27
ZZ114918		<10	<1	0.06	10	2.55	432	1	0.02	260	380	4	0.03	<2	3	21
ZZ114919		<10	<1	0.05	10	0.83	310	<1	0.02	95	350	3	0.03	<2	2	18



ALS Canada Ltd.
 2103 Dollarton Hwy
 North Vancouver BC V7H 0A7
 Phone: +1 (604) 984 0221 Fax: +1 (604) 984 0218
 www.alsglobal.com

To: STRATEGIC METALS LTD.
 C/O ARCHER, CATHRO & ASSOCIATES (1981)
 LIMITED
 1016-510 W HASTINGS ST
 VANCOUVER BC V6B 1L8

Page: 3 - C
 Total # Pages: 5 (A - C)
 Plus Appendix Pages
 Finalized Date: 26-SEP-2016
 Account: MTT

Project: CG

CERTIFICATE OF ANALYSIS WH16139956

Sample Description	Method Analyte Units LOR	ME-ICP41	ME-ICP41	ME-ICP41	ME-ICP41	ME-ICP41	ME-ICP41	ME-ICP41
		Th	Ti	Ti	U	V	W	Zn
		ppm	%	ppm	ppm	ppm	ppm	ppm
		20	0.01	10	10	1	10	2
ZZ114875		<20	0.05	<10	<10	47	<10	40
ZZ114876		<20	0.04	<10	<10	54	<10	43
ZZ114877		<20	0.03	<10	<10	52	<10	36
ZZ114878		<20	0.04	<10	<10	60	<10	47
ZZ114879		<20	0.04	<10	<10	44	<10	36
ZZ114880		<20	0.02	<10	<10	43	<10	39
ZZ114881		<20	0.04	<10	<10	53	<10	51
ZZ114882		<20	0.04	<10	<10	39	<10	33
ZZ114883		<20	0.04	<10	<10	48	<10	39
ZZ114884		<20	0.06	<10	<10	52	<10	51
ZZ114885		<20	0.05	<10	<10	52	<10	54
ZZ114886		<20	0.07	<10	<10	60	<10	68
ZZ114887		<20	0.05	<10	<10	64	<10	58
ZZ114893		<20	0.04	<10	<10	42	<10	79
ZZ114894		<20	0.04	<10	<10	42	<10	44
ZZ114895		<20	0.04	<10	<10	38	<10	41
ZZ114896		<20	0.04	<10	<10	44	<10	40
ZZ114897		<20	0.03	<10	<10	41	<10	43
ZZ114898		<20	0.05	<10	<10	50	<10	42
ZZ114899		<20	0.04	<10	<10	50	<10	41
ZZ114900		<20	0.03	<10	<10	39	<10	32
ZZ114901		<20	0.05	<10	<10	47	<10	39
ZZ114902		<20	0.04	<10	<10	53	<10	53
ZZ114903		<20	0.02	<10	<10	42	<10	32
ZZ114904		<20	0.04	<10	<10	51	<10	37
ZZ114905		<20	0.02	<10	<10	28	<10	24
ZZ114906		<20	0.04	<10	<10	58	<10	46
ZZ114907		<20	0.07	<10	<10	57	<10	42
ZZ114908		<20	0.06	<10	<10	48	<10	41
ZZ114909		<20	0.06	<10	<10	47	<10	35
ZZ114910		<20	0.07	<10	<10	49	<10	42
ZZ114911		<20	0.06	<10	<10	44	<10	45
ZZ114912		<20	0.07	<10	<10	54	<10	35
ZZ114913		<20	0.07	<10	<10	54	<10	82
ZZ114914		<20	0.03	<10	<10	39	<10	45
ZZ114915		<20	0.05	<10	<10	46	<10	65
ZZ114916		<20	0.06	<10	<10	46	<10	61
ZZ114917		<20	0.04	<10	<10	46	<10	39
ZZ114918		<20	0.06	<10	<10	41	<10	27
ZZ114919		<20	0.05	<10	<10	34	<10	22



ALS Canada Ltd.
 2103 Dollarton Hwy
 North Vancouver BC V7H 0A7
 Phone: +1 (604) 984 0221 Fax: +1 (604) 984 0218
 www.alsglobal.com

To: STRATEGIC METALS LTD.
 C/O ARCHER, CATHRO & ASSOCIATES (1981)
 LIMITED
 1016-510 W HASTINGS ST
 VANCOUVER BC V6B 1L8

Page: 4 - A
 Total # Pages: 5 (A - C)
 Plus Appendix Pages
 Finalized Date: 26-SEP-2016
 Account: MTT

Project: CG

CERTIFICATE OF ANALYSIS WH16139956

Sample Description	Method Analyte Units LOR	WEI-21	Au-ICP21	ME-ICP41	ME-ICP41	ME-ICP41	ME-ICP41	ME-ICP41	ME-ICP41	ME-ICP41	ME-ICP41	ME-ICP41	ME-ICP41	ME-ICP41	ME-ICP41	ME-ICP41
		Recvd Wt. kg	Au ppm	Ag ppm	Al %	As ppm	B ppm	Ba ppm	Be ppm	Bi ppm	Ca %	Cd ppm	Co ppm	Cr ppm	Cu ppm	Fe %
		0.02	0.001	0.2	0.01	2	10	10	0.5	2	0.01	0.5	1	1	1	0.01
ZZ114920		0.24	0.001	<0.2	0.82	3	<10	110	<0.5	<2	0.81	<0.5	16	110	25	1.83
ZZ114921		0.20	0.005	0.3	1.05	11	10	80	<0.5	<2	1.44	<0.5	19	111	68	2.31
ZZ114922		0.28	0.001	<0.2	0.98	6	<10	90	<0.5	<2	0.65	<0.5	21	124	29	2.36
ZZ114923		0.24	0.001	<0.2	0.80	5	<10	90	<0.5	<2	1.30	<0.5	21	112	35	1.83
ZZ114924		0.26	0.001	<0.2	1.01	4	<10	80	<0.5	<2	0.40	<0.5	22	161	15	2.52
ZZ114925		0.18	<0.001	<0.2	0.58	2	<10	140	<0.5	<2	1.89	<0.5	7	39	28	1.10
ZZ114926		0.18	0.003	0.4	1.14	8	<10	90	<0.5	<2	0.59	<0.5	16	106	78	2.00
ZZ114927		0.18	0.022	<0.2	0.85	4	10	110	<0.5	<2	0.53	<0.5	28	178	17	2.55
ZZ114928		0.26	0.003	<0.2	1.07	6	<10	90	<0.5	<2	0.39	<0.5	22	159	26	2.64
ZZ114929		0.18	0.007	<0.2	1.32	9	<10	140	<0.5	<2	1.10	0.7	21	83	68	2.28
ZZ114930		0.26	0.003	<0.2	1.28	6	<10	110	<0.5	<2	0.46	<0.5	20	182	47	3.03
ZZ114931		0.24	0.001	<0.2	1.40	6	<10	150	<0.5	<2	0.48	<0.5	12	86	26	2.21
ZZ114932		0.28	0.001	<0.2	1.26	4	<10	130	<0.5	<2	0.43	<0.5	11	84	25	2.08
ZZ114933		0.22	0.004	<0.2	1.21	4	<10	150	<0.5	<2	0.41	<0.5	14	111	26	2.23
ZZ114934		0.20	<0.001	<0.2	1.06	2	<10	110	<0.5	<2	0.27	<0.5	12	69	16	1.69
ZZ114935		0.24	0.004	<0.2	1.57	8	<10	110	<0.5	<2	0.31	<0.5	16	97	34	2.81
ZZ114936		0.32	0.007	<0.2	1.39	6	<10	190	<0.5	<2	0.36	<0.5	14	127	24	2.38
ZZ114937		0.26	0.002	<0.2	1.34	6	<10	150	<0.5	<2	0.34	<0.5	18	155	16	2.83
ZZ114938		0.26	0.003	<0.2	1.15	3	<10	190	<0.5	2	0.35	<0.5	12	103	15	2.04
ZZ114939		0.20	0.017	0.3	1.07	8	<10	100	<0.5	<2	0.46	<0.5	18	152	21	2.54
ZZ114940		0.26	0.008	<0.2	1.40	8	10	150	<0.5	<2	0.58	<0.5	31	170	46	3.25
ZZ114941		0.28	0.005	<0.2	1.23	7	10	170	<0.5	<2	0.58	<0.5	28	154	39	2.90
ZZ114942		0.26	0.005	<0.2	1.46	8	<10	210	<0.5	<2	0.47	<0.5	17	108	33	2.79
ZZ115353		0.28	0.003	0.2	1.58	10	<10	370	<0.5	<2	0.50	<0.5	16	116	43	2.71
ZZ115354		0.36	0.007	0.2	2.08	16	<10	630	<0.5	<2	0.56	<0.5	17	79	72	3.04
ZZ115355		0.34	0.006	0.3	2.14	29	<10	390	<0.5	<2	0.63	<0.5	22	127	57	3.56
ZZ115356		0.26	0.005	0.3	2.51	20	<10	400	<0.5	2	0.69	<0.5	28	161	55	3.91
ZZ115357		0.26	0.004	<0.2	1.41	18	10	150	<0.5	<2	0.42	<0.5	25	180	31	3.03
ZZ115358		0.18	0.015	<0.2	1.02	8	10	130	<0.5	<2	0.41	<0.5	47	346	18	3.74
ZZ115359		0.20	0.003	0.2	1.52	14	<10	190	<0.5	<2	0.37	<0.5	26	128	36	2.71
ZZ115360		0.18	0.005	0.3	2.75	27	<10	320	<0.5	<2	0.74	<0.5	29	153	52	4.10
ZZ115361		0.22	0.001	<0.2	1.23	16	<10	110	<0.5	<2	0.34	<0.5	23	146	15	2.70
ZZ115362		0.20	0.002	<0.2	1.25	10	<10	140	<0.5	<2	0.38	<0.5	21	144	15	2.72
ZZ115363		0.20	0.014	<0.2	1.04	5	10	120	<0.5	<2	0.26	<0.5	24	248	10	3.23
ZZ115364		0.22	0.006	<0.2	1.49	16	10	130	<0.5	<2	0.35	<0.5	32	217	20	3.85
ZZ115365		0.22	0.001	<0.2	1.14	7	<10	180	<0.5	<2	0.30	<0.5	28	155	17	2.72
ZZ115366		0.28	0.005	0.2	3.35	9	<10	150	<0.5	2	0.94	<0.5	17	62	72	4.21
ZZ115367		0.26	0.002	<0.2	1.60	18	10	110	<0.5	<2	0.35	<0.5	40	248	29	3.78
ZZ115368		0.26	0.006	<0.2	1.48	20	<10	130	<0.5	<2	0.27	<0.5	31	190	17	3.51
ZZ115369		0.24	0.005	<0.2	1.80	17	<10	100	<0.5	<2	0.26	<0.5	25	169	32	3.40



ALS Canada Ltd.
 2103 Dollarton Hwy
 North Vancouver BC V7H 0A7
 Phone: +1 (604) 984 0221 Fax: +1 (604) 984 0218
 www.alsglobal.com

To: STRATEGIC METALS LTD.
 C/O ARCHER, CATHRO & ASSOCIATES (1981)
 LIMITED
 1016-510 W HASTINGS ST
 VANCOUVER BC V6B 1L8

Page: 4 - B
 Total # Pages: 5 (A - C)
 Plus Appendix Pages
 Finalized Date: 26-SEP-2016
 Account: MTT

Project: CG

CERTIFICATE OF ANALYSIS WH16139956

Sample Description	Method Analyte Units LOR	ME-ICP41	ME-ICP41	ME-ICP41	ME-ICP41	ME-ICP41	ME-ICP41	ME-ICP41	ME-ICP41	ME-ICP41	ME-ICP41	ME-ICP41	ME-ICP41	ME-ICP41	ME-ICP41	
		Ga	Hg	K	La	Mg	Mn	Mo	Na	Ni	P	Pb	S	Sb	Sc	Sr
		ppm	ppm	%	ppm	%	ppm	ppm	%	ppm	ppm	ppm	%	ppm	ppm	ppm
		10	1	0.01	10	0.01	5	1	0.01	1	10	2	0.01	2	1	1
ZZ114920		<10	<1	0.04	10	1.12	428	<1	0.02	195	350	2	0.03	<2	3	33
ZZ114921		<10	<1	0.04	10	1.54	552	<1	0.02	185	540	6	0.06	2	3	50
ZZ114922		<10	1	0.04	10	1.18	589	<1	0.02	164	450	4	0.04	<2	3	27
ZZ114923		<10	1	0.04	10	1.40	674	1	0.02	193	590	4	0.08	<2	2	45
ZZ114924		<10	<1	0.04	10	2.17	415	<1	0.02	210	260	4	0.02	5	3	18
ZZ114925		<10	1	0.02	10	0.31	193	<1	0.02	108	930	2	0.14	<2	1	60
ZZ114926		<10	<1	0.04	10	1.15	381	1	0.02	199	630	8	0.06	<2	4	24
ZZ114927		<10	<1	0.04	10	3.39	417	<1	0.02	348	580	3	0.05	<2	2	19
ZZ114928		<10	<1	0.03	10	2.61	378	<1	0.02	255	310	2	0.02	<2	3	14
ZZ114929		<10	<1	0.04	10	1.06	911	1	0.01	162	3000	4	0.20	<2	1	35
ZZ114930		<10	<1	0.04	10	2.49	480	1	0.01	240	960	6	0.05	<2	2	18
ZZ114931		<10	<1	0.05	10	0.82	646	<1	0.01	73	2160	30	0.12	<2	1	23
ZZ114932		<10	<1	0.04	10	1.07	512	<1	0.02	102	1380	28	0.08	<2	1	21
ZZ114933		<10	1	0.04	10	1.15	612	<1	0.01	124	1830	12	0.11	<2	1	18
ZZ114934		<10	<1	0.04	<10	0.53	613	<1	0.01	57	1310	8	0.09	<2	<1	16
ZZ114935		10	1	0.04	10	1.43	538	<1	0.01	117	1010	18	0.05	<2	1	16
ZZ114936		<10	<1	0.04	10	1.79	378	<1	0.01	189	620	16	0.02	2	2	17
ZZ114937		<10	<1	0.04	10	2.61	309	<1	0.01	229	410	6	0.02	<2	4	20
ZZ114938		<10	<1	0.03	10	1.57	245	<1	0.01	166	630	6	0.03	<2	3	20
ZZ114939		<10	<1	0.07	10	1.99	419	1	0.01	197	800	8	0.05	<2	3	23
ZZ114940		<10	1	0.07	10	2.63	760	<1	0.02	278	940	13	0.07	<2	5	32
ZZ114941		<10	<1	0.07	10	2.26	717	<1	0.02	266	830	10	0.06	2	4	28
ZZ114942		<10	1	0.04	10	1.15	653	1	0.02	136	700	8	0.04	<2	3	26
ZZ115353		<10	<1	0.07	10	1.68	375	<1	0.04	186	340	4	0.03	<2	5	39
ZZ115354		10	<1	0.16	10	1.38	610	<1	0.05	122	680	18	0.04	<2	5	61
ZZ115355		10	1	0.14	10	2.43	533	1	0.09	218	350	6	0.03	<2	8	50
ZZ115356		10	<1	0.22	<10	2.97	609	1	0.13	317	400	7	0.03	<2	7	67
ZZ115357		<10	<1	0.12	10	2.92	471	1	0.05	294	230	4	0.03	2	5	29
ZZ115358		<10	1	0.08	<10	4.52	606	1	0.03	463	280	4	0.03	<2	4	21
ZZ115359		<10	1	0.06	10	1.63	447	1	0.03	184	470	5	0.04	<2	4	25
ZZ115360		10	1	0.12	10	2.34	590	1	0.09	280	750	10	0.05	<2	10	60
ZZ115361		<10	<1	0.09	10	2.20	400	1	0.02	204	220	6	0.02	<2	4	21
ZZ115362		<10	<1	0.07	10	1.62	407	1	0.02	151	340	4	0.04	<2	4	23
ZZ115363		<10	<1	0.05	10	2.30	364	1	0.02	235	220	4	0.02	<2	3	16
ZZ115364		<10	1	0.10	<10	3.54	559	1	0.03	306	410	5	0.03	<2	5	23
ZZ115365		<10	1	0.06	10	1.59	671	1	0.02	158	340	6	0.03	<2	4	19
ZZ115366		10	1	0.22	<10	1.42	575	6	0.34	122	550	6	0.42	<2	10	135
ZZ115367		<10	1	0.08	10	4.13	685	1	0.03	378	390	7	0.02	<2	6	18
ZZ115368		10	1	0.05	10	2.11	686	1	0.02	191	360	6	0.03	<2	4	19
ZZ115369		<10	1	0.05	10	2.41	594	1	0.02	237	550	7	0.04	<2	4	18



ALS Canada Ltd.
 2103 Dollarton Hwy
 North Vancouver BC V7H 0A7
 Phone: +1 (604) 984 0221 Fax: +1 (604) 984 0218
 www.alsglobal.com

To: STRATEGIC METALS LTD.
 C/O ARCHER, CATHRO & ASSOCIATES (1981)
 LIMITED
 1016-510 W HASTINGS ST
 VANCOUVER BC V6B 1L8

Page: 4 - C
 Total # Pages: 5 (A - C)
 Plus Appendix Pages
 Finalized Date: 26-SEP-2016
 Account: MTT

Project: CG

CERTIFICATE OF ANALYSIS WH16139956

Sample Description	Method Analyte Units LOR	ME-ICP41	ME-ICP41	ME-ICP41	ME-ICP41	ME-ICP41	ME-ICP41	ME-ICP41
		Th	Ti	Ti	U	V	W	Zn
		ppm	%	ppm	ppm	ppm	ppm	ppm
		20	0.01	10	10	1	10	2
ZZ114920		<20	0.05	<10	<10	33	<10	24
ZZ114921		<20	0.04	<10	<10	46	<10	31
ZZ114922		<20	0.06	<10	<10	44	<10	33
ZZ114923		<20	0.04	<10	<10	33	<10	29
ZZ114924		<20	0.06	<10	<10	43	<10	39
ZZ114925		<20	0.01	<10	<10	18	<10	12
ZZ114926		<20	0.04	<10	<10	40	<10	28
ZZ114927		<20	0.04	<10	<10	36	<10	35
ZZ114928		<20	0.05	<10	<10	45	<10	29
ZZ114929		<20	0.01	<10	<10	36	<10	53
ZZ114930		<20	0.04	<10	<10	53	<10	55
ZZ114931		<20	0.01	<10	<10	46	<10	75
ZZ114932		<20	0.03	<10	<10	43	<10	52
ZZ114933		<20	0.02	<10	<10	45	<10	47
ZZ114934		<20	0.01	<10	<10	37	<10	32
ZZ114935		<20	0.03	<10	<10	55	<10	73
ZZ114936		<20	0.04	<10	<10	49	<10	44
ZZ114937		<20	0.06	<10	<10	51	<10	33
ZZ114938		<20	0.04	<10	<10	40	<10	30
ZZ114939		<20	0.05	<10	<10	45	<10	40
ZZ114940		<20	0.05	<10	<10	53	<10	46
ZZ114941		<20	0.04	<10	<10	48	<10	38
ZZ114942		<20	0.05	<10	<10	53	<10	46
ZZ115353		<20	0.08	<10	<10	66	<10	47
ZZ115354		<20	0.10	<10	<10	76	<10	73
ZZ115355		<20	0.12	<10	<10	100	<10	61
ZZ115356		<20	0.11	<10	<10	92	<10	51
ZZ115357		<20	0.09	<10	<10	55	<10	37
ZZ115358		<20	0.06	<10	<10	47	<10	29
ZZ115359		<20	0.07	<10	<10	54	<10	45
ZZ115360		<20	0.11	<10	<10	98	<10	70
ZZ115361		<20	0.09	<10	<10	53	<10	33
ZZ115362		<20	0.08	<10	<10	54	<10	45
ZZ115363		<20	0.08	<10	<10	56	<10	30
ZZ115364		<20	0.08	<10	<10	68	<10	38
ZZ115365		<20	0.09	<10	<10	50	<10	38
ZZ115366		<20	0.29	<10	<10	113	<10	99
ZZ115367		<20	0.10	<10	<10	67	<10	43
ZZ115368		<20	0.08	<10	<10	64	<10	45
ZZ115369		<20	0.07	<10	<10	65	<10	46



ALS Canada Ltd.
 2103 Dollarton Hwy
 North Vancouver BC V7H 0A7
 Phone: +1 (604) 984 0221 Fax: +1 (604) 984 0218
 www.alsglobal.com

To: STRATEGIC METALS LTD.
 C/O ARCHER, CATHRO & ASSOCIATES (1981)
 LIMITED
 1016-510 W HASTINGS ST
 VANCOUVER BC V6B 1L8

Page: 5 - A
 Total # Pages: 5 (A - C)
 Plus Appendix Pages
 Finalized Date: 26-SEP-2016
 Account: MTT

Project: CG

CERTIFICATE OF ANALYSIS WH16139956

Sample Description	Method Analyte Units LOR	WEI-21	Au-ICP21	ME-ICP41	ME-ICP41	ME-ICP41	ME-ICP41	ME-ICP41	ME-ICP41	ME-ICP41	ME-ICP41	ME-ICP41	ME-ICP41	ME-ICP41	ME-ICP41	ME-ICP41
		Recvd Wt. kg	Au ppm	Ag ppm	Al %	As ppm	B ppm	Ba ppm	Be ppm	Bi ppm	Ca %	Cd ppm	Co ppm	Cr ppm	Cu ppm	Fe %
		0.02	0.001	0.2	0.01	2	10	10	0.5	2	0.01	0.5	1	1	1	0.01
ZZ115370		0.22	0.002	<0.2	1.44	14	10	140	<0.5	<2	0.33	<0.5	28	200	19	3.28
ZZ115371		0.28	0.001	<0.2	1.21	11	10	130	<0.5	<2	0.35	<0.5	29	216	16	3.07
ZZ115372		0.20	<0.001	<0.2	1.20	13	10	150	<0.5	<2	0.42	<0.5	28	198	19	2.94
ZZ115373		0.22	0.002	<0.2	1.32	21	10	150	<0.5	<2	0.50	<0.5	34	230	29	3.12
ZZ115374		0.26	0.001	<0.2	1.29	7	10	90	<0.5	<2	0.30	<0.5	26	205	20	2.91
ZZ115375		0.22	0.001	0.3	1.05	6	<10	190	<0.5	<2	0.44	0.5	28	125	28	2.31
ZZ115376		0.30	0.001	0.2	1.11	8	10	160	<0.5	<2	0.38	<0.5	27	205	16	2.82
ZZ115377		0.32	0.002	0.2	1.38	7	10	90	<0.5	<2	0.32	<0.5	25	211	20	3.06
ZZ115378		0.26	0.004	<0.2	1.10	5	<10	110	<0.5	<2	0.21	<0.5	20	101	12	2.20
ZZ115379		0.28	0.004	<0.2	1.08	5	10	130	<0.5	<2	0.30	<0.5	28	216	18	2.71
ZZ115380		0.30	0.004	<0.2	1.32	8	10	110	<0.5	<2	0.27	<0.5	44	258	24	3.51
ZZ115381		0.26	0.002	<0.2	1.19	8	10	170	<0.5	<2	0.22	<0.5	29	225	14	3.02
ZZ115382		0.24	0.001	0.2	1.33	8	<10	100	<0.5	<2	0.24	<0.5	26	160	15	2.89
ZZ115383		0.28	0.002	0.3	1.31	6	<10	190	<0.5	<2	0.35	0.6	52	133	20	2.99
ZZ115384		0.24	0.001	<0.2	1.14	4	<10	140	<0.5	2	0.47	<0.5	24	135	16	2.42
ZZ115385		0.20	0.001	<0.2	0.99	4	<10	100	<0.5	<2	0.28	0.5	32	179	9	3.07
ZZ115386		0.20	<0.001	0.2	1.30	5	<10	130	<0.5	<2	0.32	0.5	25	150	18	2.76
ZZ115387		0.28	0.002	0.2	1.86	9	10	150	<0.5	<2	1.00	<0.5	38	260	27	3.56
ZZ115388		0.30	0.001	<0.2	1.26	9	<10	110	<0.5	<2	0.34	<0.5	26	146	23	2.88
ZZ115389		0.26	0.003	0.3	1.79	32	<10	140	<0.5	<2	0.51	<0.5	21	134	58	3.12
ZZ115390		0.32	0.002	<0.2	1.26	14	<10	110	<0.5	<2	0.37	<0.5	15	131	24	2.43
ZZ115391		0.26	0.004	<0.2	1.24	8	10	110	<0.5	<2	0.30	<0.5	23	216	17	2.94
ZZ115392		0.28	0.004	<0.2	1.89	13	10	110	<0.5	<2	0.37	<0.5	22	182	35	3.62
ZZ115393		0.22	0.001	<0.2	1.13	8	<10	140	<0.5	<2	0.28	<0.5	22	179	16	2.81
ZZ115394		0.14	0.002	<0.2	2.24	10	10	230	0.5	2	0.33	<0.5	46	176	32	3.75
ZZ115395		0.26	0.005	<0.2	1.40	8	10	120	<0.5	<2	0.49	<0.5	26	203	34	3.02
ZZ115396		0.22	0.001	0.2	1.05	8	<10	100	<0.5	<2	0.30	0.5	33	186	27	2.68
ZZ115397		0.22	0.002	<0.2	1.03	5	10	100	<0.5	<2	0.30	<0.5	45	255	15	3.27
ZZ115398		0.30	0.001	0.3	1.23	4	<10	160	<0.5	<2	0.39	<0.5	27	188	32	2.77
ZZ115399		0.28	0.001	<0.2	0.88	3	<10	150	<0.5	<2	0.58	<0.5	17	138	21	1.98
ZZ115400		0.26	0.002	<0.2	0.97	4	10	90	<0.5	<2	0.44	<0.5	30	247	18	2.74
ZZ115401		0.28	0.010	0.2	1.49	9	<10	150	<0.5	<2	0.38	<0.5	25	193	42	3.06
ZZ115402		0.28	0.002	<0.2	1.19	9	<10	150	<0.5	<2	0.29	<0.5	30	228	25	3.28
ZZ115403		0.22	0.004	<0.2	1.04	4	<10	160	<0.5	<2	0.24	<0.5	15	118	19	1.93
ZZ115404		0.28	0.001	<0.2	0.94	4	<10	150	<0.5	<2	0.26	<0.5	10	137	25	2.05
ZZ115405		0.28	0.001	<0.2	0.99	3	<10	170	<0.5	<2	0.28	<0.5	14	127	15	2.27
ZZ115406		0.22	0.001	0.3	1.14	4	<10	270	<0.5	<2	0.43	<0.5	13	102	45	1.97



ALS Canada Ltd.
 2103 Dollarton Hwy
 North Vancouver BC V7H 0A7
 Phone: +1 (604) 984 0221 Fax: +1 (604) 984 0218
 www.alsglobal.com

To: STRATEGIC METALS LTD.
 C/O ARCHER, CATHRO & ASSOCIATES (1981)
 LIMITED
 1016-510 W HASTINGS ST
 VANCOUVER BC V6B 1L8

Page: 5 - B
 Total # Pages: 5 (A - C)
 Plus Appendix Pages
 Finalized Date: 26-SEP-2016
 Account: MTT

Project: CG

CERTIFICATE OF ANALYSIS WH16139956

Sample Description	Method Analyte Units LOR	ME-ICP41	ME-ICP41	ME-ICP41	ME-ICP41	ME-ICP41	ME-ICP41	ME-ICP41	ME-ICP41	ME-ICP41	ME-ICP41	ME-ICP41	ME-ICP41	ME-ICP41	ME-ICP41	
		Ga	Hg	K	La	Mg	Mn	Mo	Na	Ni	P	Pb	S	Sb	Sc	Sr
		ppm	ppm	%	ppm	%	ppm	ppm	%	ppm	ppm	ppm	%	ppm	ppm	ppm
		10	1	0.01	10	0.01	5	1	0.01	1	10	2	0.01	2	1	1
ZZ115370		<10	1	0.05	10	3.05	492	<1	0.02	284	410	6	0.03	<2	5	20
ZZ115371		<10	1	0.05	10	2.76	519	1	0.02	266	480	6	0.03	<2	4	17
ZZ115372		<10	1	0.05	10	2.74	494	1	0.02	256	750	8	0.06	<2	4	23
ZZ115373		<10	<1	0.05	10	3.33	586	1	0.02	336	910	5	0.06	<2	4	25
ZZ115374		<10	<1	0.04	10	3.09	389	<1	0.02	301	570	4	0.04	<2	3	15
ZZ115375		<10	1	0.04	10	1.05	932	1	0.02	162	840	5	0.06	<2	2	26
ZZ115376		<10	1	0.06	10	2.27	509	1	0.02	216	880	4	0.06	<2	3	22
ZZ115377		<10	<1	0.05	10	3.45	423	<1	0.02	325	520	5	0.04	<2	4	18
ZZ115378		<10	1	0.04	10	1.41	389	1	0.02	239	490	5	0.04	<2	3	15
ZZ115379		<10	<1	0.03	10	3.93	449	<1	0.02	454	410	4	0.03	<2	4	17
ZZ115380		<10	<1	0.03	10	5.22	695	<1	0.02	541	470	7	0.02	<2	5	14
ZZ115381		<10	1	0.03	10	3.28	458	1	0.02	326	260	6	0.02	<2	4	13
ZZ115382		<10	1	0.05	10	2.07	592	1	0.02	206	370	6	0.02	<2	3	15
ZZ115383		<10	1	0.06	10	1.36	1270	1	0.02	189	620	9	0.03	<2	4	24
ZZ115384		<10	1	0.06	10	1.71	515	<1	0.02	199	420	5	0.03	<2	4	23
ZZ115385		<10	<1	0.09	10	1.64	583	1	0.02	181	570	6	0.02	<2	3	17
ZZ115386		<10	<1	0.07	10	1.43	529	1	0.02	228	590	6	0.03	<2	3	21
ZZ115387		<10	1	0.07	10	4.00	612	1	0.02	513	1100	6	0.06	<2	6	37
ZZ115388		<10	1	0.09	10	3.06	538	<1	0.02	256	510	9	0.03	<2	4	19
ZZ115389		<10	<1	0.06	10	2.07	555	1	0.03	223	660	5	0.03	<2	5	29
ZZ115390		<10	1	0.06	10	1.38	456	1	0.02	123	730	5	0.05	<2	3	20
ZZ115391		10	<1	0.04	10	2.76	485	1	0.01	229	380	4	0.03	<2	3	18
ZZ115392		10	<1	0.08	10	2.98	492	2	0.04	285	430	5	0.06	<2	6	28
ZZ115393		<10	<1	0.06	10	1.69	563	1	0.01	168	630	6	0.02	<2	4	17
ZZ115394		10	<1	0.11	10	2.73	1155	1	0.02	314	960	8	0.06	<2	6	22
ZZ115395		10	<1	0.09	10	2.94	560	1	0.02	338	570	4	0.04	<2	5	22
ZZ115396		10	<1	0.08	10	2.19	860	1	0.02	218	470	7	0.03	<2	4	16
ZZ115397		<10	<1	0.10	<10	3.58	641	1	0.01	337	520	4	0.02	<2	4	16
ZZ115398		<10	<1	0.09	10	1.96	647	1	0.01	231	900	5	0.04	<2	4	22
ZZ115399		<10	<1	0.07	10	1.34	408	<1	0.01	213	790	5	0.06	<2	2	28
ZZ115400		<10	<1	0.09	10	3.97	462	<1	0.02	399	480	4	0.03	<2	4	20
ZZ115401		<10	<1	0.10	10	2.68	701	1	0.02	277	710	8	0.03	<2	5	24
ZZ115402		10	<1	0.09	10	2.18	658	1	0.01	232	580	4	0.03	<2	4	19
ZZ115403		<10	<1	0.07	10	1.19	539	1	0.02	138	1000	4	0.05	<2	1	19
ZZ115404		<10	<1	0.05	10	1.00	321	<1	0.01	120	720	4	0.04	<2	1	17
ZZ115405		<10	<1	0.05	10	1.36	482	1	0.01	128	400	4	0.02	<2	2	18
ZZ115406		<10	<1	0.04	10	1.10	521	1	0.01	143	580	4	0.04	<2	1	28



ALS Canada Ltd.
 2103 Dollarton Hwy
 North Vancouver BC V7H 0A7
 Phone: +1 (604) 984 0221 Fax: +1 (604) 984 0218
 www.alsglobal.com

To: STRATEGIC METALS LTD.
 C/O ARCHER, CATHRO & ASSOCIATES (1981)
 LIMITED
 1016-510 W HASTINGS ST
 VANCOUVER BC V6B 1L8

Page: 5 - C
 Total # Pages: 5 (A - C)
 Plus Appendix Pages
 Finalized Date: 26-SEP-2016
 Account: MTT

Project: CG

CERTIFICATE OF ANALYSIS	WH16139956
-------------------------	------------

Sample Description	Method	ME-ICP41	ME-ICP41	ME-ICP41	ME-ICP41	ME-ICP41	ME-ICP41
	Analyte	Th	Ti	Ti	U	V	W
	Units	ppm	%	ppm	ppm	ppm	ppm
LOR		20	0.01	10	10	1	10
ZZ115370		<20	0.07	<10	<10	62	<10
ZZ115371		<20	0.06	<10	<10	53	<10
ZZ115372		<20	0.05	<10	<10	53	<10
ZZ115373		<20	0.04	<10	<10	51	<10
ZZ115374		<20	0.05	<10	<10	47	<10
ZZ115375		<20	0.04	<10	<10	47	<10
ZZ115376		<20	0.05	<10	<10	49	<10
ZZ115377		<20	0.06	<10	<10	51	<10
ZZ115378		<20	0.06	<10	<10	40	<10
ZZ115379		<20	0.05	<10	<10	40	<10
ZZ115380		<20	0.06	<10	<10	53	<10
ZZ115381		<20	0.06	<10	<10	48	<10
ZZ115382		<20	0.08	<10	<10	56	<10
ZZ115383		<20	0.07	<10	<10	52	<10
ZZ115384		<20	0.07	<10	<10	44	<10
ZZ115385		<20	0.08	<10	<10	49	<10
ZZ115386		<20	0.06	<10	<10	47	<10
ZZ115387		<20	0.07	<10	<10	62	<10
ZZ115388		<20	0.07	<10	<10	56	<10
ZZ115389		<20	0.08	<10	<10	64	<10
ZZ115390		<20	0.06	<10	<10	55	<10
ZZ115391		<20	0.07	<10	<10	59	<10
ZZ115392		<20	0.11	<10	<10	74	<10
ZZ115393		<20	0.07	<10	<10	54	<10
ZZ115394		<20	0.06	<10	<10	70	<10
ZZ115395		<20	0.07	<10	<10	56	<10
ZZ115396		<20	0.07	<10	<10	51	<10
ZZ115397		<20	0.07	<10	<10	45	<10
ZZ115398		<20	0.06	<10	<10	47	<10
ZZ115399		<20	0.05	<10	<10	35	<10
ZZ115400		<20	0.05	<10	<10	40	<10
ZZ115401		<20	0.07	<10	<10	59	<10
ZZ115402		<20	0.08	<10	<10	57	<10
ZZ115403		<20	0.02	<10	<10	39	<10
ZZ115404		<20	0.04	<10	<10	41	<10
ZZ115405		<20	0.06	<10	<10	48	<10
ZZ115406		<20	0.04	<10	<10	40	<10



ALS Canada Ltd.
2103 Dollarton Hwy
North Vancouver BC V7H 0A7
Phone: +1 (604) 984 0221 Fax: +1 (604) 984 0218
www.alsglobal.com

To: STRATEGIC METALS LTD.
C/O ARCHER, CATHRO & ASSOCIATES (1981)
LIMITED
1016-510 W HASTINGS ST
VANCOUVER BC V6B 1L8

Page: Appendix 1
Total # Appendix Pages: 1
Finalized Date: 26-SEP-2016
Account: MTT

Project: CG

CERTIFICATE OF ANALYSIS WH16139956

CERTIFICATE COMMENTS									
Applies to Method:	<p style="text-align: center;">LABORATORY ADDRESSES</p> <p>Processed at ALS Vancouver located at 2103 Dollarton Hwy, North Vancouver, BC, Canada.</p> <table><tr><td>Au-ICP21</td><td>LOG-22</td><td>ME-ICP41</td><td>SCR-41</td></tr><tr><td>WEI-21</td><td></td><td></td><td></td></tr></table>	Au-ICP21	LOG-22	ME-ICP41	SCR-41	WEI-21			
Au-ICP21	LOG-22	ME-ICP41	SCR-41						
WEI-21									



ALS Canada Ltd.
 2103 Dollarton Hwy
 North Vancouver BC V7H 0A7
 Phone: +1 (604) 984 0221 Fax: +1 (604) 984 0218
 www.alsglobal.com

To: STRATEGIC METALS LTD.
 C/O ARCHER, CATHRO & ASSOCIATES (1981)
 LIMITED
 1016-510 W HASTINGS ST
 VANCOUVER BC V6B 1L8

Page: 1
 Total # Pages: 2 (A - D)
 Plus Appendix Pages
 Finalized Date: 7-SEP-2016
 Account: MTT

CERTIFICATE WH16141610

Project: CG

This report is for 3 Rock samples submitted to our lab in Whitehorse, YT, Canada on 24-AUG-2016.

The following have access to data associated with this certificate:

HEATHER BURRELL	JOAN MARIACHER
-----------------	----------------

SAMPLE PREPARATION	
ALS CODE	DESCRIPTION
WEI-21	Received Sample Weight
LOG-21	Sample logging - ClientBarCode
CRU-QC	Crushing QC Test
PUL-QC	Pulverizing QC Test
CRU-31	Fine crushing - 70% <2mm
SPL-21	Split sample - riffle splitter
PUL-31	Pulverize split to 85% <75 um

ANALYTICAL PROCEDURES		
ALS CODE	DESCRIPTION	
ME-MS61	48 element four acid ICP-MS	
Au-GRA21	Au 30g FA-GRAV finish	WST-SIM

To: STRATEGIC METALS LTD.
 ATTN: JOAN MARIACHER
 C/O ARCHER, CATHRO & ASSOCIATES (1981) LIMITED
 1016-510 W HASTINGS ST
 VANCOUVER BC V6B 1L8

This is the Final Report and supersedes any preliminary report with this certificate number. Results apply to samples as submitted. All pages of this report have been checked and approved for release.

***** See Appendix Page for comments regarding this certificate *****

Signature: 
 Colin Ramshaw, Vancouver Laboratory Manager



ALS Canada Ltd.
 2103 Dollarton Hwy
 North Vancouver BC V7H 0A7
 Phone: +1 (604) 984 0221 Fax: +1 (604) 984 0218
 www.alsglobal.com

To: STRATEGIC METALS LTD.
 C/O ARCHER, CATHRO & ASSOCIATES (1981)
 LIMITED
 1016-510 W HASTINGS ST
 VANCOUVER BC V6B 1L8

Page: 2 - A
 Total # Pages: 2 (A - D)
 Plus Appendix Pages
 Finalized Date: 7-SEP-2016
 Account: MTT

Project: CG

CERTIFICATE OF ANALYSIS WH16141610

Sample Description	Method Analyte Units LOR	WEI-21 Recvd Wt. kg	ME-MS61 Ag ppm	ME-MS61 Al %	ME-MS61 As ppm	ME-MS61 Ba ppm	ME-MS61 Be ppm	ME-MS61 Bi ppm	ME-MS61 Ca %	ME-MS61 Cd ppm	ME-MS61 Ce ppm	ME-MS61 Co ppm	ME-MS61 Cr ppm	ME-MS61 Cs ppm	ME-MS61 Cu ppm	ME-MS61 Fe %
		0.02	0.01	0.01	0.2	10	0.05	0.01	0.01	0.02	0.01	0.1	1	0.05	0.2	0.01
K282989		1.31	0.29	0.97	1.5	10	<0.05	0.03	9.33	1.23	0.22	64.8	447	<0.05	2680	12.60
K282990		1.52	0.15	4.87	10.8	370	1.03	0.03	5.57	0.09	11.55	9.6	21	0.60	43.3	3.29
K282991		1.46	0.06	5.54	4.1	900	0.48	0.08	0.13	0.04	25.9	0.9	13	0.89	19.5	0.71

***** See Appendix Page for comments regarding this certificate *****



ALS Canada Ltd.
 2103 Dollarton Hwy
 North Vancouver BC V7H 0A7
 Phone: +1 (604) 984 0221 Fax: +1 (604) 984 0218
 www.alsglobal.com

To: STRATEGIC METALS LTD.
 C/O ARCHER, CATHRO & ASSOCIATES (1981)
 LIMITED
 1016-510 W HASTINGS ST
 VANCOUVER BC V6B 1L8

Page: 2 - B
 Total # Pages: 2 (A - D)
 Plus Appendix Pages
 Finalized Date: 7-SEP-2016
 Account: MTT

Project: CG

CERTIFICATE OF ANALYSIS WH16141610

Sample Description	Method Analyte Units LOR	ME-MS61	ME-MS61	ME-MS61	ME-MS61	ME-MS61	ME-MS61	ME-MS61	ME-MS61	ME-MS61	ME-MS61	ME-MS61	ME-MS61	ME-MS61	ME-MS61	
		Ga	Ge	Hf	In	K	La	Li	Mg	Mn	Mo	Na	Nb	Ni	P	Pb
		ppm	ppm	ppm	ppm	%	ppm	ppm	%	ppm	ppm	%	ppm	ppm	ppm	ppm
		0.05	0.05	0.1	0.005	0.01	0.5	0.2	0.01	5	0.05	0.01	0.1	0.2	10	0.5
K282989		1.09	<0.05	0.1	0.012	0.01	<0.5	1.2	13.20	920	0.24	0.04	<0.1	567	10	0.5
K282990		9.60	<0.05	0.7	0.026	0.71	5.4	10.9	1.12	628	0.20	1.77	1.7	12.5	480	2.5
K282991		8.56	0.07	1.4	0.005	1.25	16.9	2.2	0.21	233	0.17	3.69	2.7	17.0	160	6.8

***** See Appendix Page for comments regarding this certificate *****



ALS Canada Ltd.
 2103 Dollarton Hwy
 North Vancouver BC V7H 0A7
 Phone: +1 (604) 984 0221 Fax: +1 (604) 984 0218
 www.alsglobal.com

To: STRATEGIC METALS LTD.
 C/O ARCHER, CATHRO & ASSOCIATES (1981)
 LIMITED
 1016-510 W HASTINGS ST
 VANCOUVER BC V6B 1L8

Page: 2 - C
 Total # Pages: 2 (A - D)
 Plus Appendix Pages
 Finalized Date: 7-SEP-2016
 Account: MTT

Project: CG

CERTIFICATE OF ANALYSIS WH16141610

Sample Description	Method Analyte Units LOR	ME-MS61	ME-MS61	ME-MS61	ME-MS61	ME-MS61	ME-MS61	ME-MS61	ME-MS61	ME-MS61	ME-MS61	ME-MS61	ME-MS61	ME-MS61	ME-MS61	ME-MS61
		Rb ppm	Re ppm	S %	Sb ppm	Sc ppm	Se ppm	Sn ppm	Sr ppm	Ta ppm	Te ppm	Th ppm	Ti %	Tl ppm	U ppm	V ppm
		0.1	0.002	0.01	0.05	0.1	1	0.2	0.2	0.05	0.05	0.01	0.005	0.02	0.1	1
K282989		0.4	<0.002	<0.01	0.45	35.1	<1	<0.2	4.2	<0.05	<0.05	0.04	0.019	0.02	<0.1	134
K282990		19.7	<0.002	0.01	0.36	11.6	1	0.5	212	0.12	<0.05	0.72	0.261	0.13	0.4	102
K282991		32.4	<0.002	<0.01	0.33	0.8	<1	0.3	218	0.17	<0.05	5.81	0.034	0.27	1.0	4

***** See Appendix Page for comments regarding this certificate *****



ALS Canada Ltd.
 2103 Dollarton Hwy
 North Vancouver BC V7H 0A7
 Phone: +1 (604) 984 0221 Fax: +1 (604) 984 0218
 www.alsglobal.com

To: STRATEGIC METALS LTD.
 C/O ARCHER, CATHRO & ASSOCIATES (1981)
 LIMITED
 1016-510 W HASTINGS ST
 VANCOUVER BC V6B 1L8

Page: 2 - D
 Total # Pages: 2 (A - D)
 Plus Appendix Pages
 Finalized Date: 7-SEP-2016
 Account: MTT

Project: CG

CERTIFICATE OF ANALYSIS WH16141610

Sample Description	Method Analyte Units LOR	ME-MS61	ME-MS61	ME-MS61	ME-MS61	Au-GRA21
		W	Y	Zn	Zr	Au
		ppm	ppm	ppm	ppm	ppm
		0.1	0.1	2	0.5	0.05
K282989		1.8	1.1	19	1.2	<0.05
K282990		7.1	9.0	50	17.2	<0.05
K282991		1.1	2.2	14	32.8	<0.05

***** See Appendix Page for comments regarding this certificate *****



ALS Canada Ltd.
 2103 Dollarton Hwy
 North Vancouver BC V7H 0A7
 Phone: +1 (604) 984 0221 Fax: +1 (604) 984 0218
 www.alsglobal.com

To: STRATEGIC METALS LTD.
 C/O ARCHER, CATHRO & ASSOCIATES (1981)
 LIMITED
 1016-510 W HASTINGS ST
 VANCOUVER BC V6B 1L8

Page: Appendix 1
 Total # Appendix Pages: 1
 Finalized Date: 7-SEP-2016
 Account: MTT

Project: CG

CERTIFICATE OF ANALYSIS WH16141610

	CERTIFICATE COMMENTS								
Applies to Method:	<p style="text-align: center;">ANALYTICAL COMMENTS</p> <p>REE's may not be totally soluble in this method. ME-MS61</p>								
Applies to Method:	<p style="text-align: center;">LABORATORY ADDRESSES</p> <p>Processed at ALS Whitehorse located at 78 Mt. Sima Rd, Whitehorse, YT, Canada.</p> <table style="width: 100%; border: none;"> <tr> <td style="width: 33%;">CRU-31</td> <td style="width: 33%;">CRU-QC</td> <td style="width: 33%;">LOG-21</td> <td style="width: 33%;">PUL-31</td> </tr> <tr> <td>PUL-QC</td> <td>SPL-21</td> <td>WEI-21</td> <td></td> </tr> </table>	CRU-31	CRU-QC	LOG-21	PUL-31	PUL-QC	SPL-21	WEI-21	
CRU-31	CRU-QC	LOG-21	PUL-31						
PUL-QC	SPL-21	WEI-21							
Applies to Method:	<p>Processed at ALS Vancouver located at 2103 Dollarton Hwy, North Vancouver, BC, Canada.</p> <table style="width: 100%; border: none;"> <tr> <td style="width: 50%;">Au-GRA21</td> <td style="width: 50%;">ME-MS61</td> </tr> </table>	Au-GRA21	ME-MS61						
Au-GRA21	ME-MS61								