



#700 – 509 Richards Street
Vancouver, British Columbia
Canada, V6C 2Z6

Telephone: (604) 801-7240
Toll-free: 1-888-989-7240
Fax: (604) 689-8355

info@selwynresources.com
www.selwynresources.com

ASSESSMENT REPORT

DESCRIBING A

LiDAR AIRBORNE TOPOGRAPHIC SURVEY

ON THE

IGLOO PROPERTY

IGLOO CLAIMS: IGLOO 21 – IGLOO 40

Claims are 100% owned by Selwyn Resources Ltd.

NTS Sheets 105I05 and 105I12

UTM Coordinates: 451910E – 454180E, 6929410N – 6931260N, Zone 9, NAD 83

In the Watson Lake Mining District
Yukon Territory

Prepared by:

Matthew Jodrey, BScH, LLb

February 2010

TABLE OF CONTENTS

	Page
Introduction	3
Accessibility, Climate, and Physiography	3
List of Claims by name and by grant number being renewed	4
Description of Undertakings	5
Results	5
Discussion and Recommendations	5

Tables

Table 1 – List of claims by name and grant number being renewed	4
---	---

Appendixes

Appendix A - Statement of Expenditures	6
Appendix B - Statement of Qualification	7

Figures

Figure 1 – LiDAR Imagery Map including the Igloo 21 – Igloo 40 Claims	8
---	---

INTRODUCTION

The Igloo 21 – Igloo 40 property is 100% owned by Selwyn Resources Ltd. (“Selwyn”). The claims subject to this report (Table 1) were worked on between October 6th and October 13th, 2010 by an airborne LiDAR (Light Detection and Ranging) survey crew flying out of Watson Lake. The collection of topographic data with the LiDAR system for the creation of detailed maps of the property was the primary undertaking at this time.

ACCESSIBILITY, CLIMATE and PHYSIOGRAPHY

The Igloo 21 – Igloo 40 property is located in the Watson Lake Mining District in eastern Yukon on NTS Sheets 105I05 and 105I12, UTM Coordinates: 451910E – 454180E, 6929410N – 6931260N, Zone 9, NAD 88. Access into site is 279 km by fixed wing survey aircraft from Watson Lake to the Igloo property. The survey was carried out for Selwyn by Dudley Thompson Mapping Corporation.

The Igloo 21 – Igloo 40 property is situated in the Wolf Canyon area of the upper Pelly River valley, within a sub-alpine area of the Selwyn Mountains, at an elevation of 1000 – 1300 meters.

The Igloo 21 – Igloo 40 property is part of the Pelly River watershed. Black spruce, alder, willow, buck brush, moss and lichen make up the vegetation on the property. The property is overlain by Pleistocene colluviums and glacial till.

LIST OF CLAIMS BY GRANT NUMBER BEING RENEWED

Table 1. List of claims being renewed in this assessment report.

Grant Number	Claim Name	New Expiry Date
YC91881	IGLOO 21	7/20/2015
YC91882	IGLOO 22	7/20/2015
YC91883	IGLOO 23	7/20/2015
YC91884	IGLOO 24	7/20/2015
YC91885	IGLOO 25	7/20/2015
YC91886	IGLOO 26	7/20/2015
YC91887	IGLOO 27	7/20/2015
YC91888	IGLOO 28	7/20/2015
YC91889	IGLOO 29	7/20/2015
YC91890	IGLOO 30	7/20/2015
YC91891	IGLOO 31	7/20/2015
YC91892	IGLOO 32	7/20/2015
YC91893	IGLOO 33	7/20/2015
YC91894	IGLOO 34	7/20/2015
YC91895	IGLOO 35	7/20/2015
YC91896	IGLOO 36	7/20/2015
YC91897	IGLOO 37	7/20/2015
YC91898	IGLOO 38	7/20/2015
YC91899	IGLOO 39	7/20/2015
YC91900	IGLOO 40	7/20/2015

DESCRIPTION OF UNDERTAKINGS

Mapping crews from Dudley Thompson Mapping Corporation conducted an airborne LiDAR topographic survey of the Jacal property between October 6th and October 13th, 2009. The mission involved flying numerous precise lines over the property, accumulating surface imagery data for detailed mapping purposes.

RESULTS

The program provided Selwyn with high quality LiDAR geo reference imagery mosaics, 0.5 meter contours of the property, and ASCII point data containing x, y and z coordinates.

This data has enabled the construction of high-resolution maps and will continue to aid in the creation of high-resolution, extremely high-precision maps of the property.

Please refer to Figure 1 (attached) for an example of a high-resolution LiDAR imagery map with 5 meter contour intervals, produced with the data received through this project.

DISCUSSION AND CONCLUSIONS:

The imagery and map produced through the data from this project will aid Selwyn in exploration activities. High resolution imagery will be valuable in the identification of surface features such as lineaments, which may be an indication of geological structures such as fault and shear zones. This will improve our overall understanding of the local geology, and aid in ongoing exploration activities.

Detailed maps created as a result of this program will also assist in ongoing prospecting activities throughout the property.

The Igloo 21 – Igloo 40 property should be maintained in good standing and warrants further geological, geochemical and geophysical exploration.

Respectfully Submitted,

Matthew Jodrey, B.ScH., L.Lb.
Geologist
Selwyn Resources Ltd.

Vancouver, B.C., February 15th., 2010

APPENDIX A

STATEMENT OF EXPENDITURES

I, Matthew Jodrey, as agent for Selwyn Resources Ltd, #700-509 Richards Street, Vancouver, B.C. do solemnly declare that a LiDAR airborne topographic survey was carried out on the Selwyn Project Claims (see attached list) between the dates of October 6th, 2009 and October 13, 2009.

LiDAR Survey	
Survey Cost	\$ 12,262.20
Total	\$ 12,262.20

I make this solemn declaration conscientiously believing it to be true and knowing that it is of the same force and effect as if made under oath and by virtue of the Canada Evidence Act.

Declared before me at Vancouver in the Province of British Columbia this 3rd day of February 2010.

Matthew Jodrey

Notary Public



Suite 700 – 509 Richards Street
Vancouver, British Columbia
Canada, V6B 2Z6

Telephone: +1 (604) 801-7240
Toll-free: 1 (888)-989-7240

Fax: +1 (604) 689-8355
info@selwynresources.com
www.selwynresources.com

APPENDIX B

Statement of Qualifications

I, Matthew Jodrey, resident of Vancouver, British Columbia, do certify that:

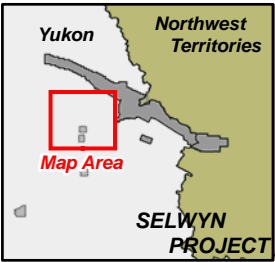
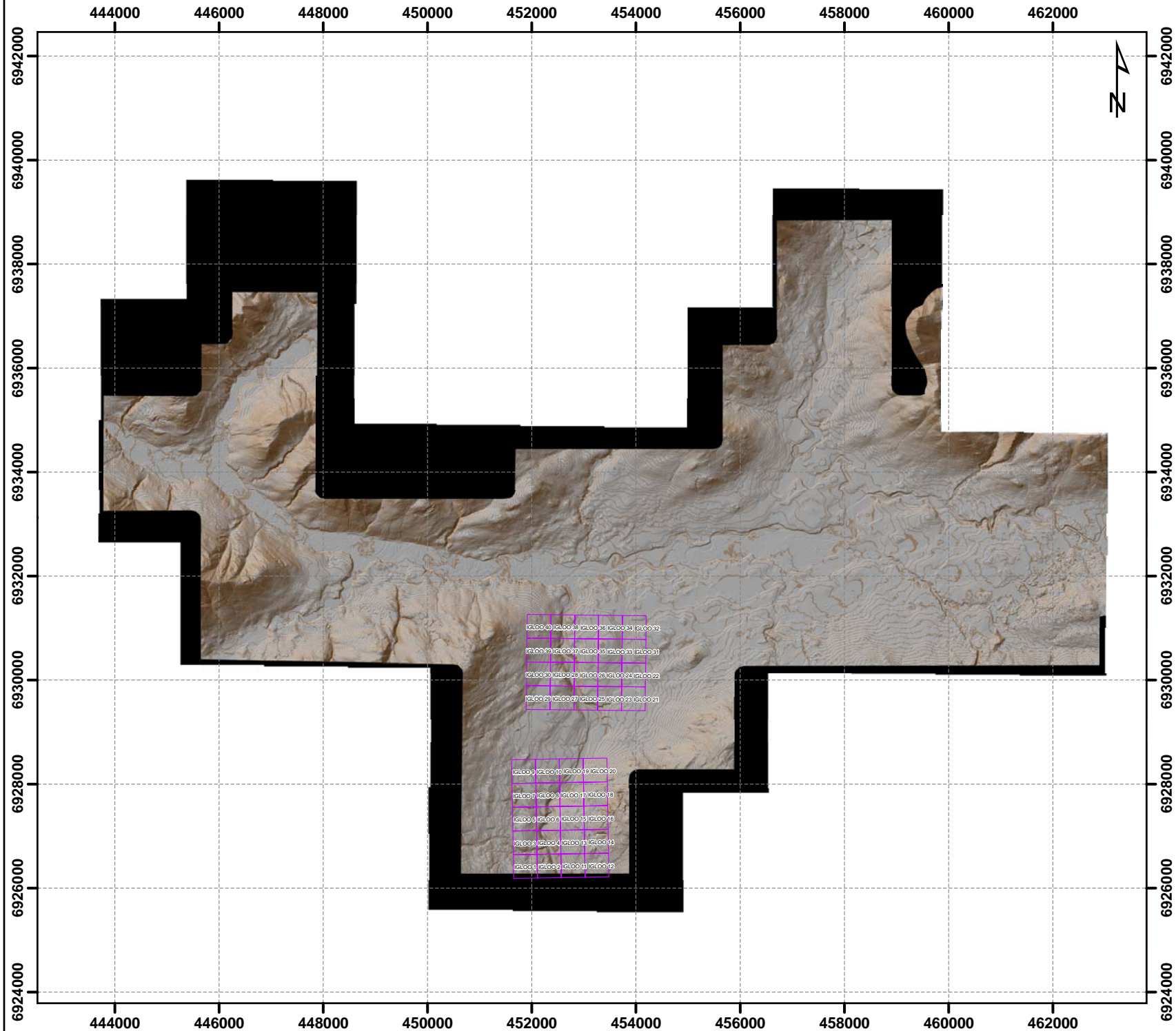
1. I graduated from Acadia University in Nova Scotia in May 2002 with a B.ScH. in Geology;
2. From June 2008 to present, I have been actively engaged in mineral exploration in the Yukon Territory and I am presently employed with Selwyn Resources Ltd.;
3. I have personally participated in assisting with the coordination of the LiDAR airborne survey carried out at the Igloo 21 – Igloo 40 claims in October 2009.

Respectfully submitted,

Matthew Jodrey, B.ScH., L.Lb

FIGURE 1

LiDAR Imagery Map of an area including the Igloo 21 – Igloo 40 Property



Legend

- Igloo 1-40 Claims
- 5m LiDAR Contour

LiDAR Imagery Value

High : 254

Low : 0

IGLOO 34 IGLOO 33 IGLOO 32 IGLOO 31 IGLOO 30
 IGLOO 29 IGLOO 28 IGLOO 27 IGLOO 26 IGLOO 25
 IGLOO 24 IGLOO 23 IGLOO 22 IGLOO 21 IGLOO 20
 IGLOO 19 IGLOO 18 IGLOO 17 IGLOO 16 IGLOO 15
 IGLOO 14 IGLOO 13 IGLOO 12 IGLOO 11 IGLOO 10
 IGLOO 9 IGLOO 8 IGLOO 7 IGLOO 6 IGLOO 5
 IGLOO 4 IGLOO 3 IGLOO 2 IGLOO 1

Date: 2010/2/12
 Author: M.Mayer
 Office: Vancouver
 Figure:
 Scale: 1:100,124

**LiDAR Imagery:
 Igloo 1-40
 Claims**

Filename: SL1710_dms_20100212_LIDAR_Igloo1-40.mxd
 Project Location: Watson Lake Mining District - NTS 105/U
 Projection: NAD83 - UTM Zone 9