

**WOLVERINE MINERALS CORP.  
STRATEGIC METALS LTD.**

**FIGURE 3**

ARCHER, CATHRO & ASSOCIATES (1981) LIMITED

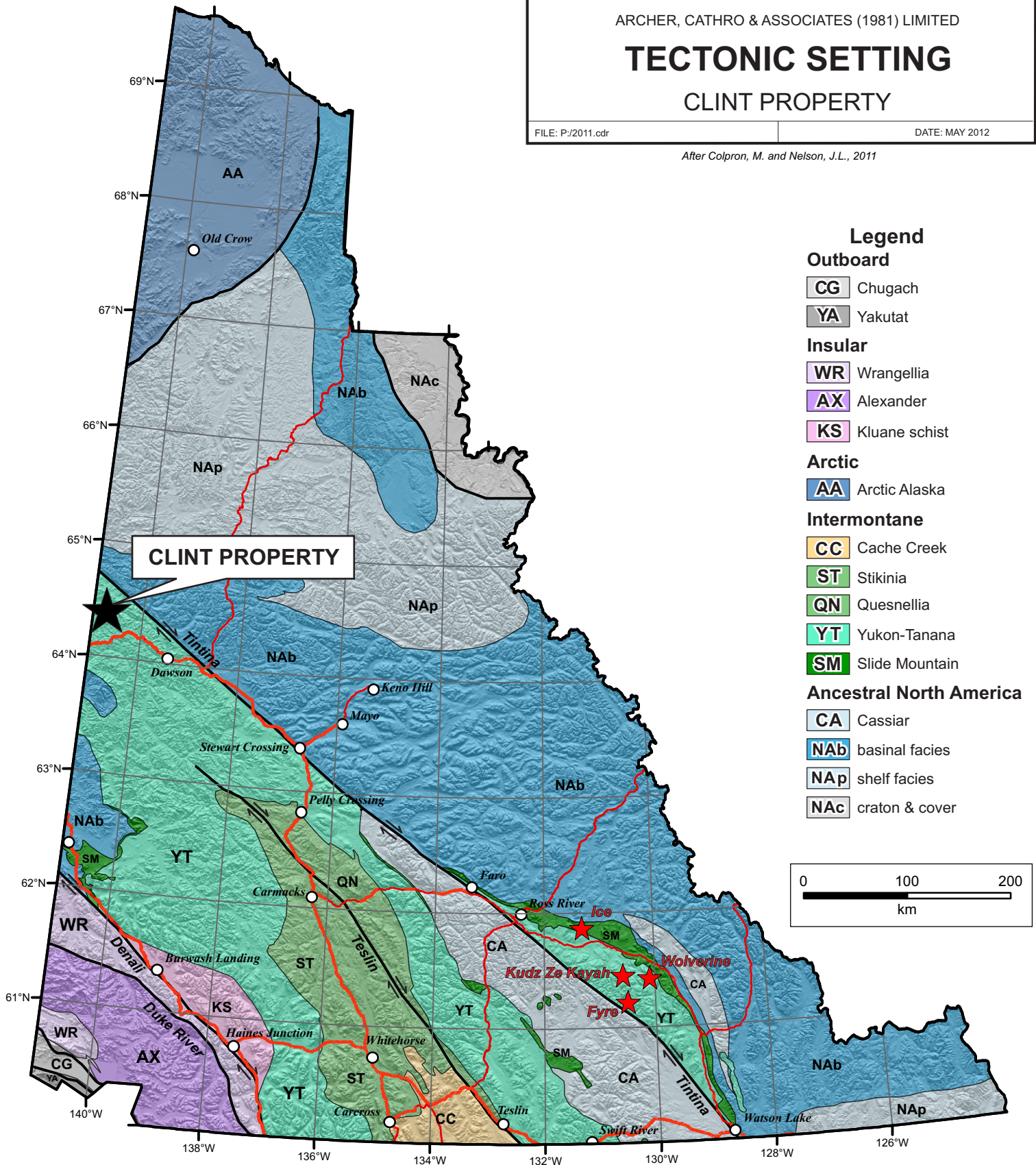
**TECTONIC SETTING**

**CLINT PROPERTY**

FILE: P:/2011.cdr

DATE: MAY 2012

*After Colpron, M. and Nelson, J.L., 2011*



**Legend**

**Outboard**

- CG** Chugach
- YA** Yakutat

**Insular**

- WR** Wrangellia
- AX** Alexander
- KS** Kluane schist

**Arctic**

- AA** Arctic Alaska

**Intermontane**

- CC** Cache Creek
- ST** Stikinia
- QN** Quesnellia
- YT** Yukon-Tanana
- SM** Slide Mountain

**Ancestral North America**

- CA** Cassiar
- NAb** basinal facies
- NAp** shelf facies
- NAc** craton & cover

