

ASSESSMENT REPORT
ON **GROUND MAGNETOMETER, GROUND SPECTROMETER,**
AND GEOCHEMICAL SURVEYS

FOR

GOLDSTRIKE RESOURCES LTD.

1300-1111 West Georgia Street,

Vancouver, B.C., V6E 4M3

on the

LIVINGSTONE PROJECT, WHITEHORSE MINING DISTRICT

BRC CLAIMS & NUMBER	GRANT NUMBER	EXPIRY	REGISTERED OWNER	% OWNED	NTS
LIV 1-66	YD119011 to YD119076	2016-11-30	Goldspike Explorations Inc.	100	105 E
LT 1-3	YD155673 to YD155675	2012-09-28	Terrence King	100	105 E
LT 5-8	YD155677 to YD155680	2012-09-28	Terrence King	100	105 E
LT 9	YD 155690	2012-09-28	Terrence King	100	105 E

Latitude $61^{\circ} 22' 21'' N$, Longitude $134^{\circ} 17' 17'' W$
(538,046E, 6,804,806N: NAD83 Zone 8N)

Data Collection by

Druid Exploration Inc., Dawson City, YT

September 28, 2012

Report by

Ronald F. Sheldrake, B.Sc.

EarthWorks Geophysical Consultants

White Rock, British Columbia

April 20, 2012

TABLE OF CONTENTS

1. Introduction.....	1
2. Disclaimer.....	1
3. Claim Location and Survey Grids	1
4. Geology	7
5. 2011 Field Work	7
6. Ground Magnetometer and Spectrometer Surveys.....	8
6.1 2011 Ground Magnetic and Spectrometer Surveys.....	8
7. Geophysical Techniques.....	8
7.1 Magnetic Technique.....	8
7.2 Radiometric Technique.....	9
8. Geophysical Data and Interpretation.....	9
9. Geochemical Surveys.....	10
9.1 Rock Sampling	10
9.2 Soil Sampling.....	10
10 Data Presentation and Discussion.....	12
10.1 Magnetic Image.....	12
10.2 Potassium Radiometric Image.....	12
12. Summary.....	15
Bibliography.....	16
Appendix 1 – Application for a Certificate of Work (2 pages).....	17
Appendix 2 – Application to Group Mineral Claims.....	19
Appendix 3 – Grouping Map.....	20
Appendix 4 – Statement of Qualifications, R. Sheldrake.....	21
Appendix 5 - Rock Geochemistry Certificate WHI1001284.....	22
Appendix 6 - Rock Geochemistry Certificate WHI1011738.....	28
Appendix 7 - Soil Geochemistry Certificate WHI1001285.....	42

ILLUSTRATIONS

Illustration 1: Livingstone Property Location Map.....	3
Illustration 2: Livingstone Claim Location Map.....	4
Illustration 3: Claim Location showing Geophysical Survey Lines	5
Illustration 4: Regional GSC Geology	6
Illustration 5: Geochem Identification Numbers	11
Illustration 6: Geochem Au Values with Magnetic Image and Interpretation.....	13
Illustration 7: Geochem Au Values with Potassium Radiometric Image and Interpretation.	14

LIST OF MAPS PRESENTED IN THE TEXT OF THIS REPORT - PDF versions of the geophysical maps are included on a DVD that comes with this report.

MAP NUMBER	TITLE	Scale
MAP 1	LIVINGSTONE PROPERTY LOCATION MAP	1:1,500,000
MAP 2	LIVINGSTONE CLAIM LOCATION MAP	1:40,000
MAP 3	CLAIM LOCATION WITH GEOPHYSICAL SURVEY LINES MAP	1:50,000
MAP 4	REGIONAL GEOLOGICAL MAP	1:50,000
MAP 5	GEOCHEM ID NUMBERS MAP	1:20,000
MAP 6	GEOCHEMICAL ROCK AND SOIL AU VALUES WITH TMI MAGNETOMETER IMAGE AND INTERPRETATION MAP	1:25,000
MAP 7	GEOCHEMICAL ROCK AND SOIL AU VALUES WITH POTASSIUM (CPS) IMAGE AND INTERPRETATION MAP	1:25,000

LIST OF FILES ON THE DVD INCLUDED WITH THIS REPORT

FILE DESCRIPTION	FILE FORMAT
Ground Magnetic and Spectrometer Data Sets	GEOSOFT.gdb Format
Rock Geochemistry Certificate WHI1001284 Rock Geochemistry Certificate WHI1001738 Soil Geochemistry Certificate WHI1001285	PDF Format
This report	PDF Format

1. INTRODUCTION

Between August 21 and August 24 and between September 16 and September 22, 2011 geochemical and geophysical exploration work was undertaken on portions of the Liv Claims (and some geochemical testing in adjacent areas) by Druid Exploration Inc., Dawson City, on behalf of Goldstrike Resources Ltd. The focus of the rock geochemistry program was to evaluate the geochemical nature of the productive gold placer operation in the area, as well as to identify areas within the present claim area that might lead to commercial quantities of quartz gold mineralization. The principal geological study available in the area is by Maurice Colpron, Yukon Geological Survey (2006), which is used as a base for the maps as illustrations presented in this report. Subsequent to the recording of the assessment work on the LIV Claims, fractional claims (LT 1-3, LT 5-8 and LT 9) were staked September 28, 2012 as part of the exploration program.

2. DISCLAIMER

The author has prepared this report based upon information believed to be accurate, but is not guaranteed. This report may contain sanguine statements. For example, a statement such as, “*the data suggest the potential for mineralization,*” is accepted as incomplete. It is taken for granted that the reader accepts this class of statement as an inherent element in an interpretation report, and therefore does not require a cautionary statement at every instance.

3. CLAIM LOCATION AND SURVEY GRIDS

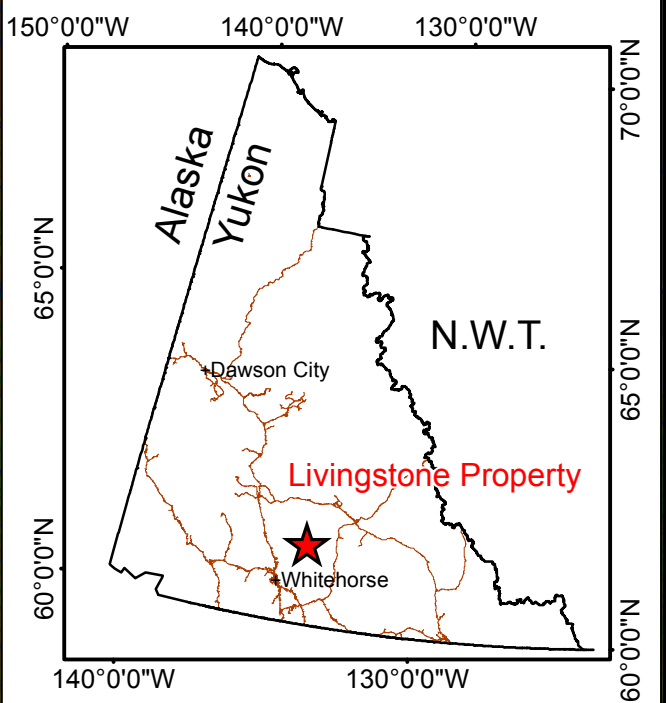
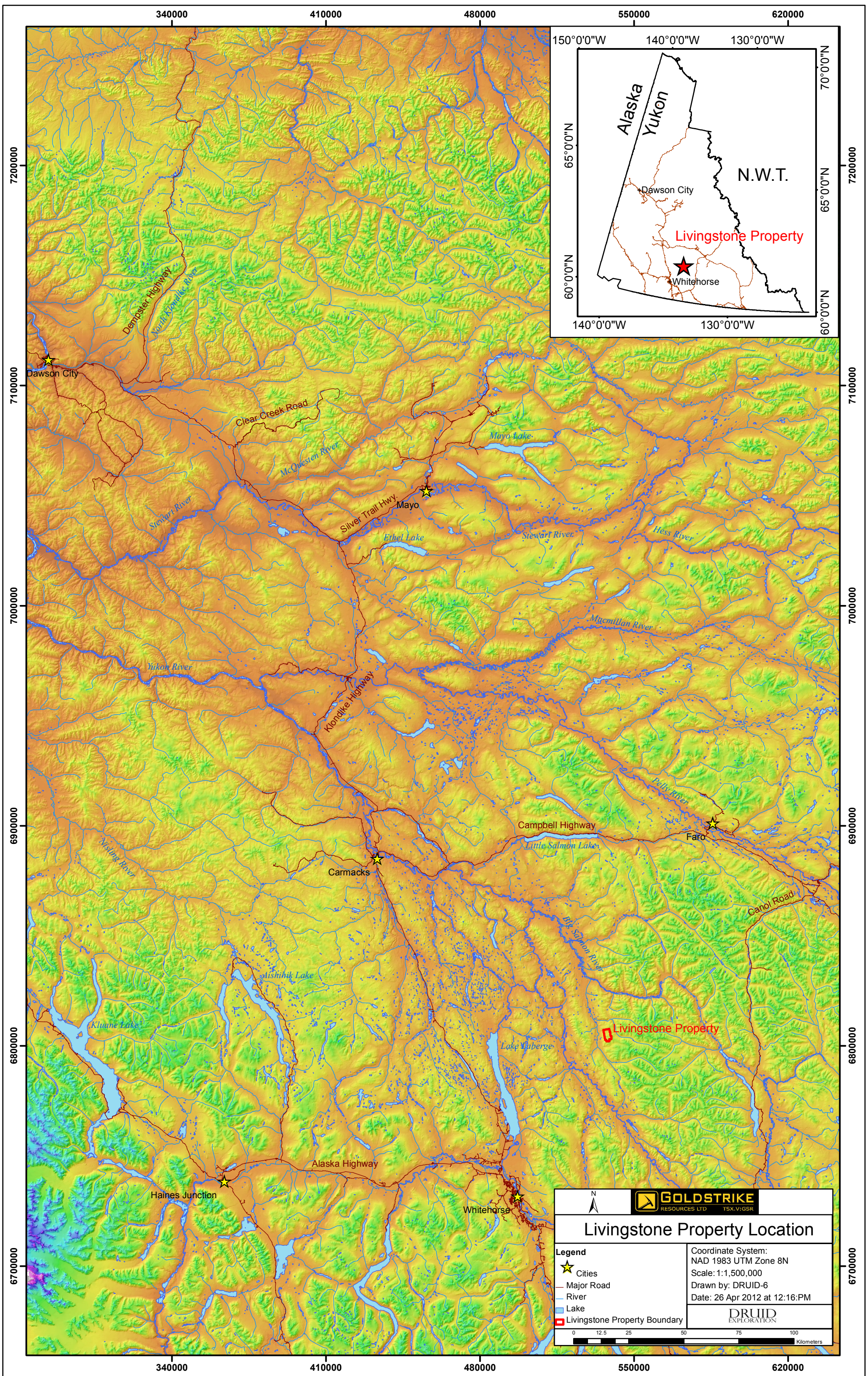
The Livingstone property is located 85 km NE of Whitehorse, YT. Access was by









helicopter and fixed wing aircraft from Whitehorse. Illustration 1 below shows the location of the of the property: Illustration 2 below shows the location of the Claims and Illustration 3 shows the location of the geophysical survey lines with the claim outline.

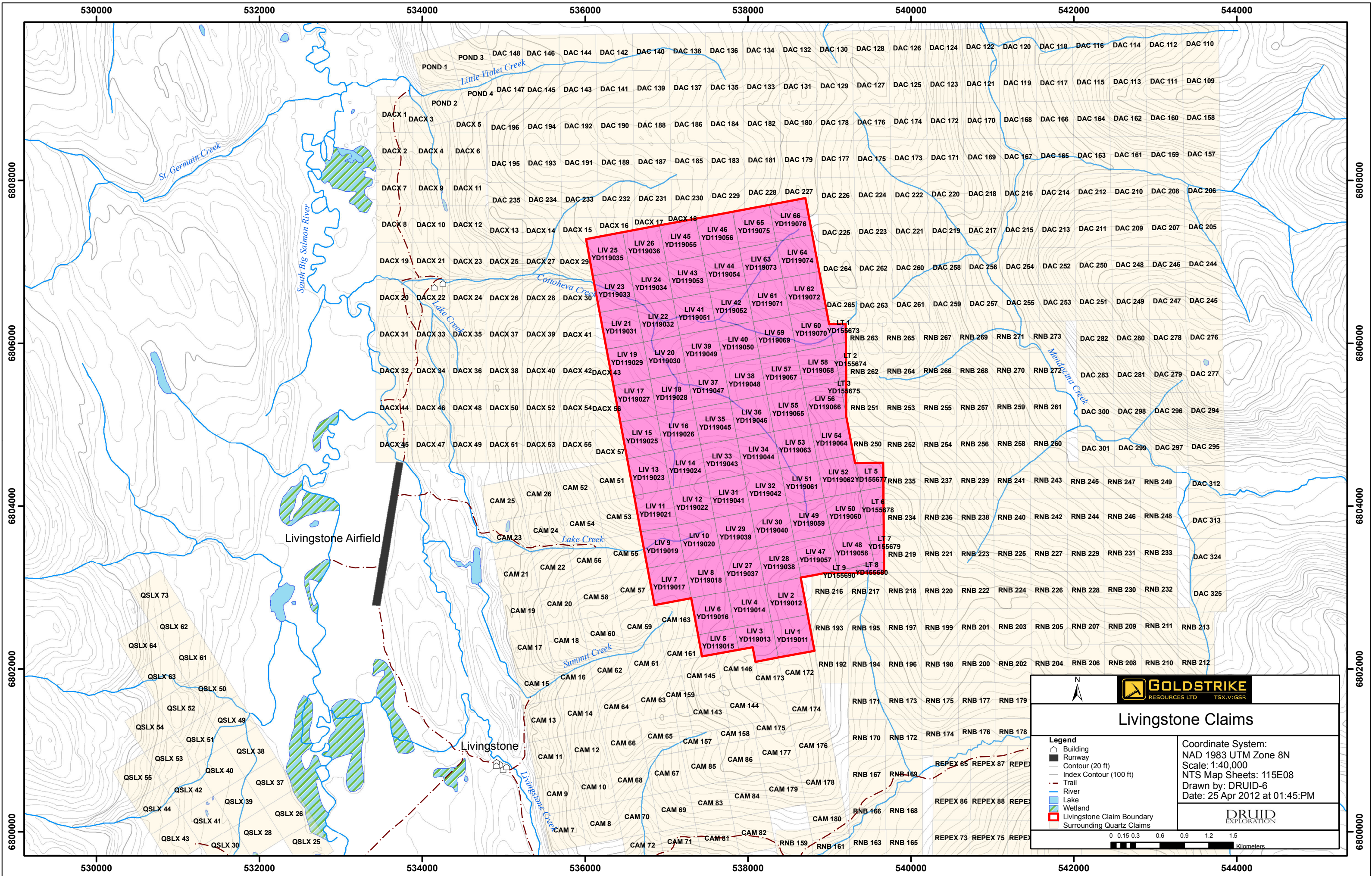
The survey statistics for the 2011 exploration program) are as follows:


<u>Survey Type</u>	<u>Kilometers Measured</u>	<u>Number of Traverses</u>	<u>Unit of Measurement / Noise Levels</u>
Ground Magnetometer	18.8 km	29 Survey Lines	nanotesla/ +/-2.0 nT
Ground Spectrometer	18.8 km	29 Survey Lines	cps +/-5cps
<u>Survey Type</u>	<u>Number of Samples</u>		
Rock Samples	68		
Soil Samples	1		

The remainder of this pages is left blank.



 GOLDSTRIKE <small>RESOURCES LTD. TSX:V:GSR</small>	
<h3>Livingstone Property Location</h3>	
Legend <ul style="list-style-type: none">  Cities  Major Road  River  Lake  Livingstone Property Boundary 	<p>Coordinate System: NAD 1983 UTM Zone 8N</p> <p>Scale: 1:1,500,000</p> <p>Drawn by: DRUID-6</p> <p>Date: 26 Apr 2012 at 12:16:PM</p>
 <small>0 12.5 25 50 75 100 Kilometers</small>	
 DRUID <small>EXPLORATION</small>	






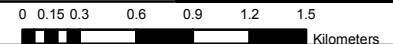
Livingstone Claims

Legend

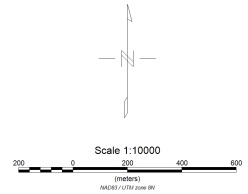
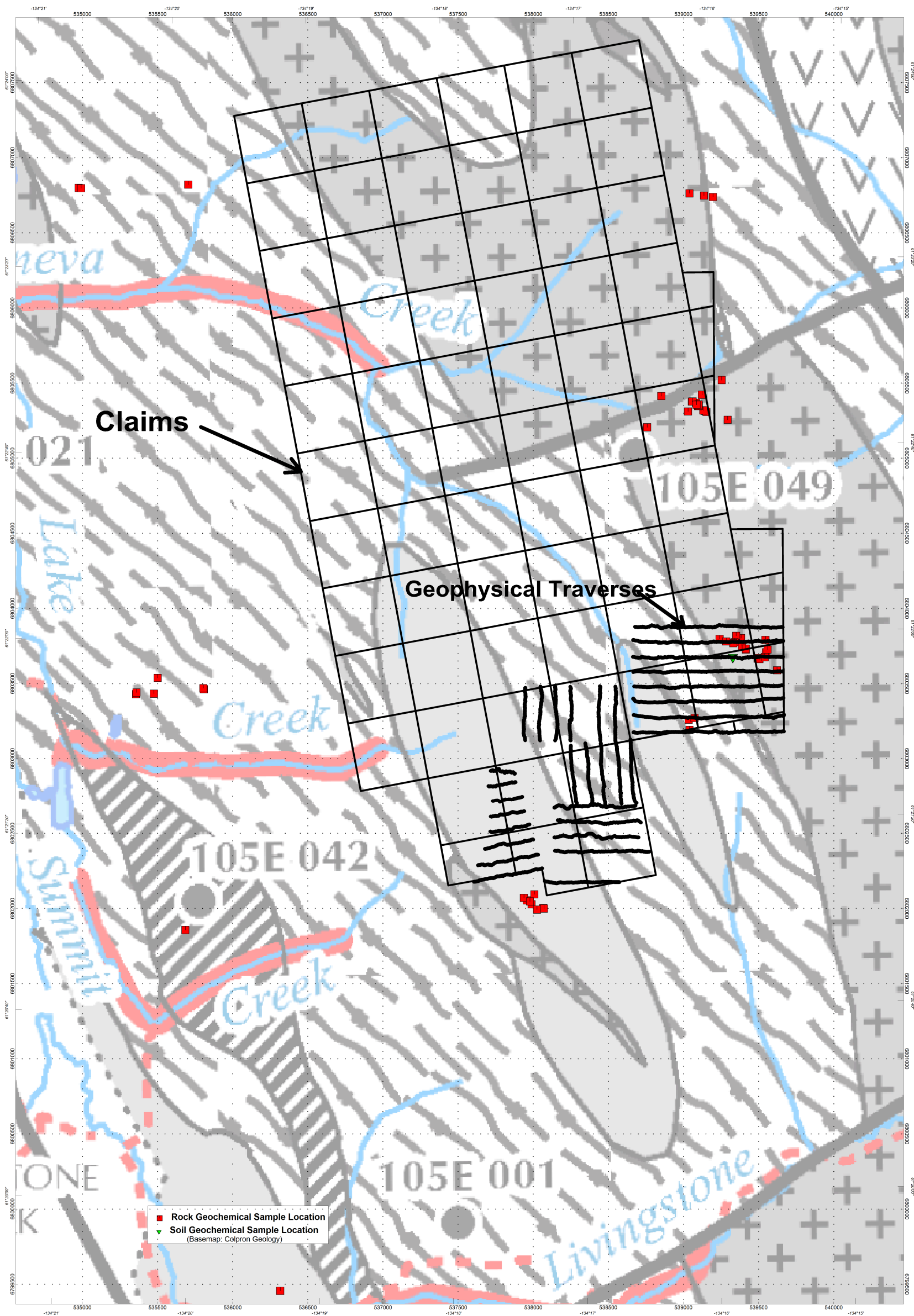
- Building
- Runway
- Contour (20 ft)
- Index Contour (100 ft)
- Trail
- River
- Lake
- Wetland
- Livingstone Claim Boundary
- Surrounding Quartz Claims

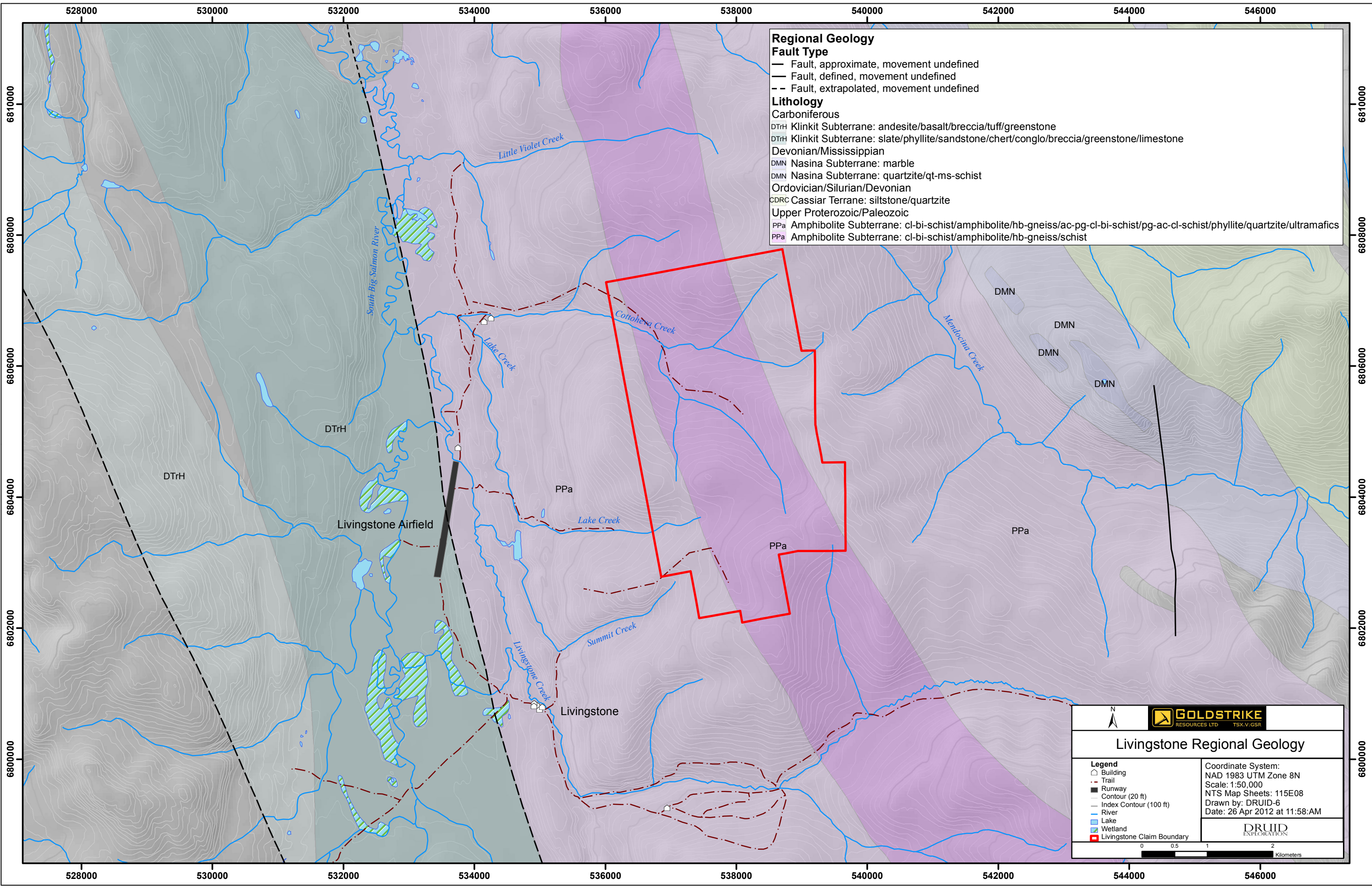
Coordinate System:
 NAD 1983 UTM Zone 8N
 Scale: 1:40,000
 NTS Map Sheets: 115E08
 Drawn by: DRUID-6
 Date: 25 Apr 2012 at 01:45:PM





Kilometers





Regional Geology

Fault Type

- Fault, approximate, movement undefined
- Fault, defined, movement undefined
- - Fault, extrapolated, movement undefined

Lithology

Carboniferous

- DTrH Klinkit Subterrane: andesite/basalt/breccia/tuff/greenstone
- DTrH Klinkit Subterrane: slate/phyllite/sandstone/chert/conglo/breccia/greenstone/limestone

Devonian/Mississippian

- DMN Nasina Subterrane: marble
- DMN Nasina Subterrane: quartzite/qt-ms-schist

Ordovician/Silurian/Devonian

- CDRC Cassiar Terrane: siltstone/quartzite

Upper Proterozoic/Paleozoic

- PPa Amphibolite Subterrane: cl-bi-schist/amphibolite/hb-gneiss/ac-pg-cl-bi-schist/pg-ac-cl-schist/phyllite/quartzite/ultramafics
- PPa Amphibolite Subterrane: cl-bi-schist/amphibolite/hb-gneiss/schist

GOLDSTRIKE
RESOURCES LTD. TSX.V:GSR

Livingstone Regional Geology

<p>Legend</p> <ul style="list-style-type: none"> □ Building - - Trail ▬ Runway — Contour (20 ft) — Index Contour (100 ft) — River — Lake ▨ Wetland ▭ Livingstone Claim Boundary 	<p>Coordinate System: NAD 1983 UTM Zone 8N Scale: 1:50,000 NTS Map Sheets: 115E08 Drawn by: DRUID-6 Date: 26 Apr 2012 at 11:58:AM</p>
	<p>DRUID EXPLORATION</p>

0 0.5 1 2 Kilometers

4. GEOLOGY

Illustration 4 above shows the GSC Regional Geology of the area. The Livingstone Property is located within the Yukon-Tanana Terrane; a composite of crustal blocks including former volcanic island arc and continental shelf depositional environments. The present claims extend far enough east to cover the contact between the Early Mississippian intrusion and the Devonian metaquartzite and schist, at the headwaters of Lake and Cottoneva Creeks, and far enough north to cover the north side of Cottoneva Creek. They also extend far enough south to cover the ridge and the cirque at the southeast extremity of the Lake Creek drainage. Glacial overburden is extensive in the area, especially within the creek valleys.⁽¹⁾

Further, Colpron (2006) describes the geology of the area as follows:

“The Yukon-Tanana Terrane in the Livingstone Creek area comprises five successions of metasedimentary and metavolcanic rocks which range in age from pre_Upper Devonian to lower Mississippian. They are correlated with Lower Mississippian and older strata in the Glenlyon and Finlayson Lake areas. Yukon-Tanana rocks are intruded by at least five plutonic suites, ranging in age from Late Devonian to Late Cretaceous. The structural style of the area is dominated by a transportation foliation which is axial planar to isoclinal folds of an earlier foliation. The transportation foliation is itself folded by northeast-verging open fold.....”⁽²⁾

5. 2011 FIELD WORK

The exploration program was carried out by staff of Druid Exploration Inc. and included the following crew: Geologists: Clayton Jones, Daithi Mac Gearailt, Edward Dashwood; Field Hand/ Samplers: Sam Lewis, Kaylee Youngdahl, Brad Osmond, Dustin Blampin. Contractors: Ron Stack, Tom Morgan, and Ron Sheldrake.

The total days worked by Druid Crew (August 22 – August 24, 2011 and September 18 – September 21, 2011) was 42 man days.

6. GROUND MAGNETOMETER AND SPECTROMETER SURVEYS

6.1 2011 Ground Magnetic and Spectrometer Surveys

The ground magnetometer and spectrometers surveys were carried out on September 19, 20 and 21, 2011 at the southern extremity of the Livingstone Claim Block. A 100 meter line interval was used. The data are well interpretable and of good quality. Maps images and interpretation of the data are displayed below. The data was collected with a GEM 19 Walking Magnetometer and the data was corrected for diurnal variations using a GEM 19 base-station. The spectrometer system used was a “walking” PGIS 21 that is manufactured by PicoEnvirotec of Toronto, Ontario. It is a backpack system with a 20 cubic inch sodium iodide crystal and GPS positioning.

7. GEOPHYSICAL TECHNIQUES

7.1 Magnetic Technique

Magnetometer data are used to identify rock types, faults, and alteration zones. Much of the time, the magnetic responses arise from the minerals magnetite and pyrrhotite, and although ilmenite, chromite, and platinum and other minerals are magnetic, they are much less so.

Magnetic maps provide a picture of the distribution of magnetic materials in the subsurface rocks. In general, localized magnetic responses (sometimes they are called “anomalies”) that arise from the surface and near surface distributions of magnetic materials, are of shorter wavelength than those that arise from deeper seated sources.

Occasionally, magnetic responses right away lead to the detection of commercial ore-bodies, although this is rare. For example, a massive sulphide ore-body might contain pyrrhotite as one of its constituent minerals, and the magnetic maps will therefore identify and delimit the orebody. However, there is a whole spectrum of magnetic responses that can arise due to mechanical, metamorphic and geochemical changes in rocks.

7.2 Radiometric Technique

Gamma-ray spectrometer surveys are utilized for mapping the concentration and distribution of naturally occurring radioelements in the rocks. The use of an airborne and ground gamma-ray spectrometer allows for the in-situ analysis of radioelement concentrations of naturally occurring Potassium (K), Uranium (U) and Thorium (Th).

The concentrations of K, U, and Th can be diagnostic in the mapping of rocks and soils. In the exploration for uranium, gold, copper, tin and tungsten since mineralization is often related to K alteration so that radiometric data provide a useful exploration tool.

Radioactivity measurements are dependent upon the detection of gamma rays produced through radioactive decay of the nuclide to be detected and the data are fundamentally statistical. The primary field data is collected in units of counts per second (cps).

It should be noted that the radiometric emanations are derived from only surface materials in order of 0.5 - 1.0 cm deep. Snow can suppress the radiometric responses, and water can mask it altogether.

8. GEOPHYSICAL DATA AND INTERPRETATION

Interpretation of the ground magnetic and spectrometer data involves reviewing the data in profile, whilst evaluating their significance to their plan map representations with any geological, geochemical, topographical and other exploration information that is available. If the data are complete and indicative of suitable exploration information an overall interpretation map-image is derived. One map-image from each of the principal data sets are illustrated in the text of this report along with an interpretation. However, all map/images are presented digitally on the DVD that comes with this report, namely Total Magnetic Intensity image/maps set, and Total Count Spectrometer image/maps. All maps and datasets used in this survey use NAD 83 Zone 8N coordinate system.

9. GEOCHEMICAL SURVEYS

Rock sampling was the principal geochemical method on the Livingstone claims. Also a single soil sample was taken. A complete record of the geochemical sampling data-sets is provided as Excel.xls files and are included on the DVD that comes with this report.

9.1 Rock Sampling

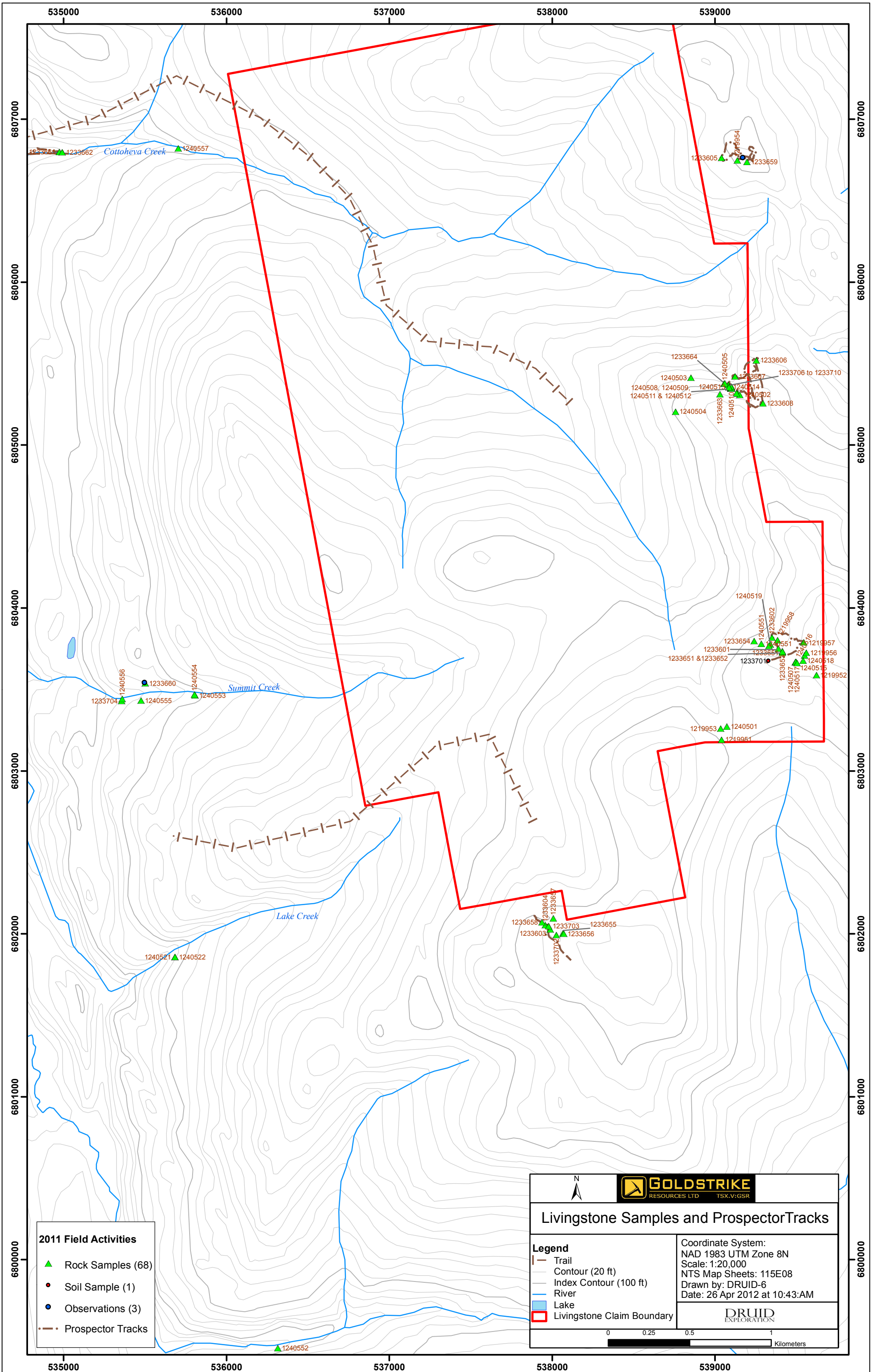
Rock samples were taken based on lithology, mineralogy, and structure. Sample locations were marked on the GPS and labeled with the lab tag number used. The sample locations were marked with labeled flagging tape. Rock and Silt locations are plotted with Au (PPB) values on the geophysical maps below.

The geochemical sample locations (coordinates) were downloaded into the computer and stored in a database with all corresponding notes. Rock samples were photographed and their description recorded in a database.

9.2 Soil Sampling

Soil sample locations were derived using Arc GIS 10.0 and sample locations (waypoints) were programmed into hand-held GPSs. Sampler would navigate to points and take samples. The samplers took deep soil samples with dutch augers, targeting the “C” horizon. The location of the sample was recorded on the GPS and later imported to Arc GIS and Geosoft to be mapped. Detailed sample notes were taken at each site (depth, soil type, vegetation etc.). Acme water proof sample tags were used.

The sample location was flagged with the corresponding acme tag number written on the flagging tape. Sample locations (coordinates) were downloaded into the computer and stored in a database with all corresponding notes. Soil lines were added or altered periodically as the property was explored.



2011 Field Activities

- ▲ Rock Samples (68)
- Soil Sample (1)
- Observations (3)
- Prospector Tracks

GOLDSTRIKE
RESOURCES LTD TSX.V:GSR

Livingstone Samples and Prospector Tracks

Legend

- Trail
- Contour (20 ft)
- Index Contour (100 ft)
- River
- Lake
- Livingstone Claim Boundary

Coordinate System:
NAD 1983 UTM Zone 8N
Scale: 1:20,000
NTS Map Sheets: 115E08
Drawn by: DRUID-6
Date: 26 Apr 2012 at 10:43:AM

DRUID
EXPLORATION

0 0.25 0.5 1 Kilometers

535000 536000 537000 538000 539000

6807000
6806000
6805000
6804000
6803000
6802000
6801000
6800000

6807000
6806000
6805000
6804000
6803000
6802000
6801000
6800000

10 DATA PRESENTATION AND DISCUSSION

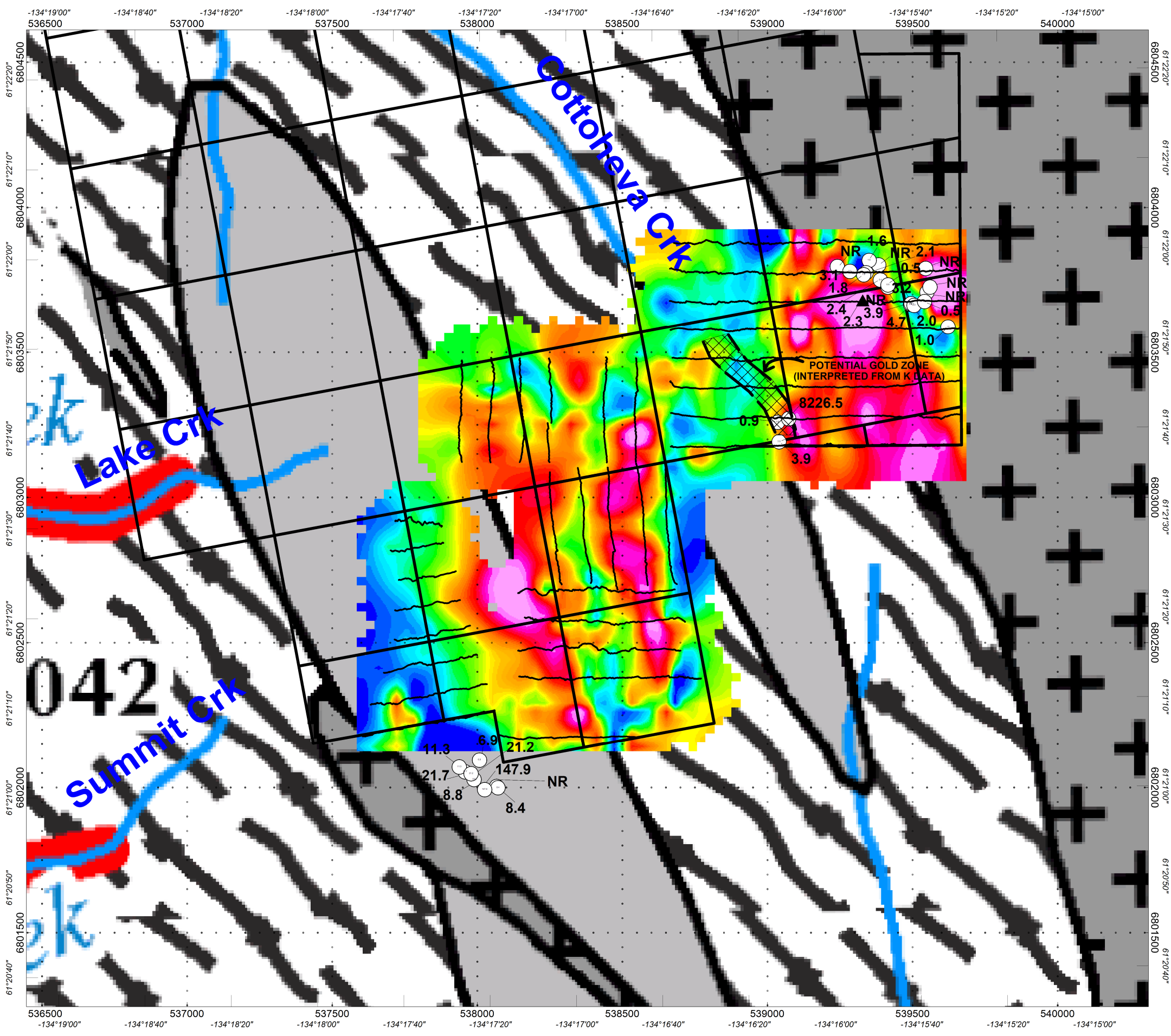
10.1 Magnetic Image

As the Illustration 6 below indicates, the magnetic geophysical data appears to be generally in agreement with the geology as mapped by Colpron (2006). Geochemical values are also plotted on these illustrations. The magnetic data suggest that the magnetic lows are roughly coincident with shales and sedimentary units, while the stronger magnetic responses appear to be coincident with intrusive rocks and their metamorphic equivalents.

10.2 Potassium Radiometric Image

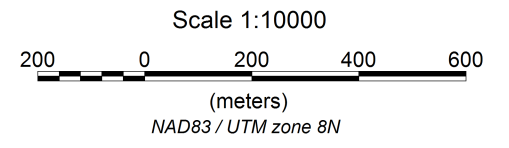
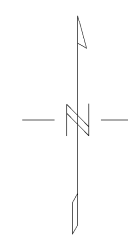
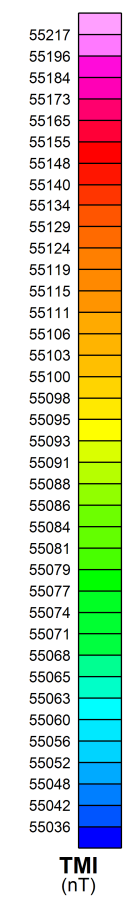
The radiometric data shown on Illustration 7 indicate relatively distinct areas of potassic alteration, and in one case a high Au rock sample (>8000 PPB; float) is directly related to a linear potassic feature of about 350 m in length.

The remainder of this pages is left blank.



LEGEND:

- Rock Geochemical Value (Au PPB)
- ▲ Soil Geochemical value (Au PPB)



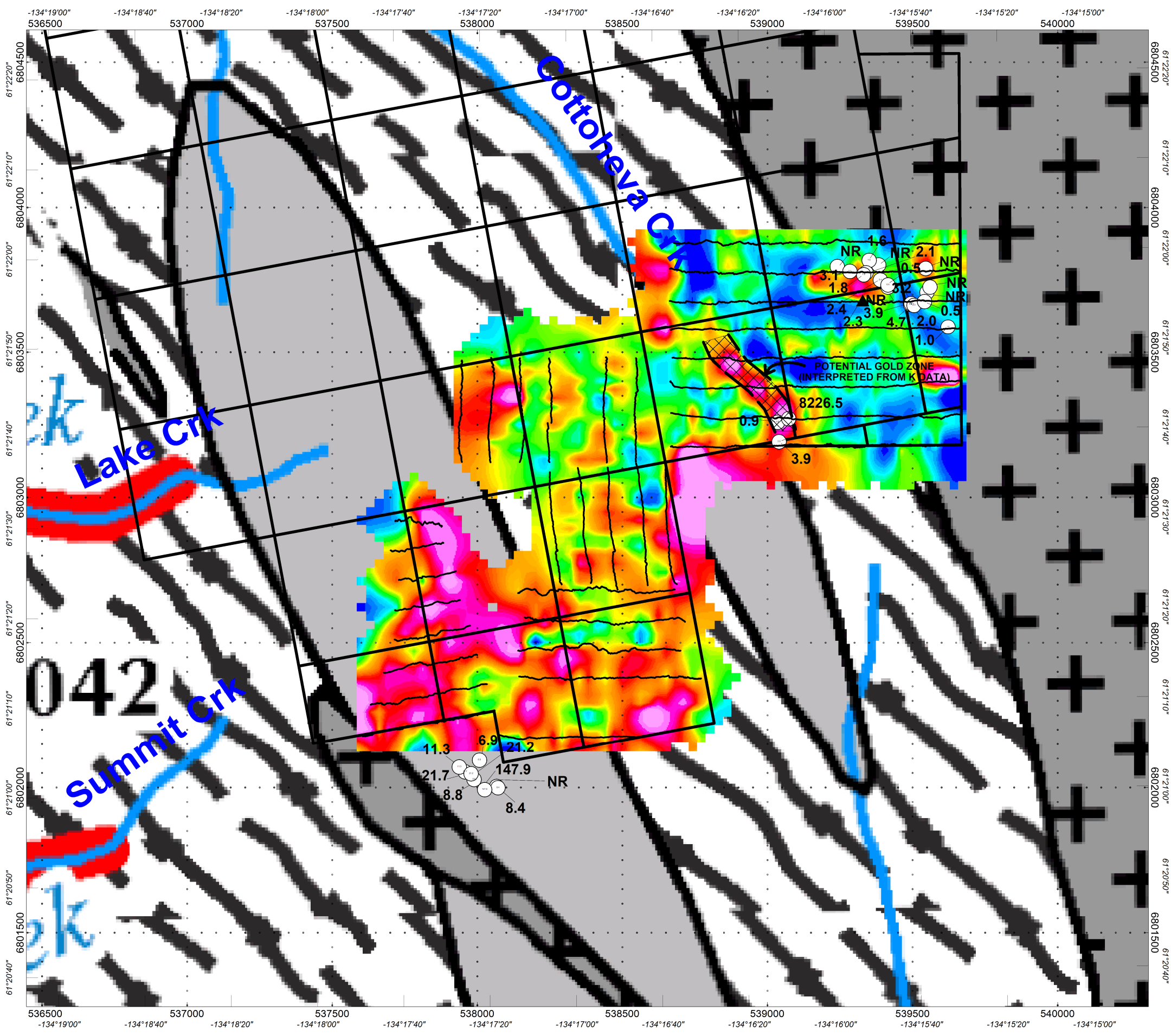
GOLDSTRIKE RESOURCES LTD.

LIVINGSTONE GOLD CAMP, YT
TMI MAGNETIC IMAGE WITH GEOCHEMISTRY VALUES
Geological BaseMap: Colpron (2006)

Declination: 22 deg 2 min Inclination: 77 deg 44 min
 Data Collected by: Druid Exploration Inc.

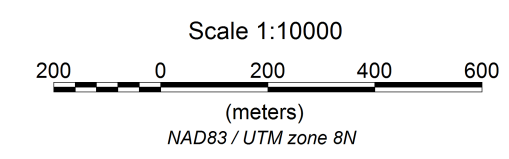
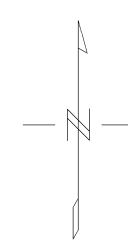
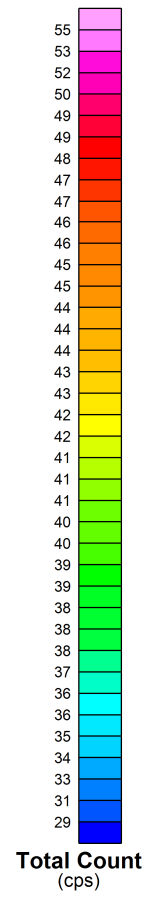
MAP 6

EarthWorks Geophysical Consultants, White Rock, B.C.



LEGEND:

- Rock Geochemical Value (Au PPB)
- ▲ Soil Geochemical value (Au PPB)



GOLDSTRIKE RESOURCES LTD.

LIVINGSTONE GOLD CAMP, YT
K RADIOMETRIC IMAGE WITH GEOCHEMISTRY VALUES
 Geological BaseMap: Colpron (2006)

Data Collected by: Druid Exploration Inc.

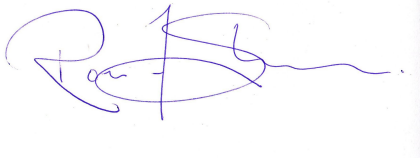
MAP 7

EarthWorks Geophysical Consultants, White Rock, B.C.

11. Summary

Both the geophysical and geochemistry data sets that were acquired in the 2011 season were acquired to industry standards, and provide an excellent interpretive data-set. Both the geochemical and geophysical data-sets require expansion and fill-in to better delineate the target zone(s). The coincident radiometric and Au Geochemistry responses on LIV 47 Claim is a principal target derived from this exploration program, and requires further testing.

Respectfully submitted,



Ronald F. Sheldrake, B.Sc. (Geophysics)
EarthWorks Geophysical Consultants

Bibliography

1) Dashwood, Edward, B.Sc. (Preliminary) **“Geological and Geochemical Work on the Livingstone Property”**, September 2011

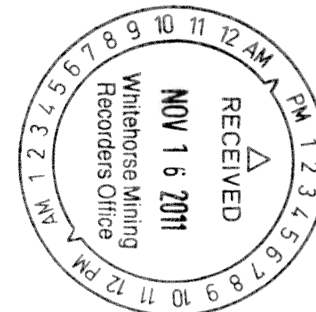
2) Colpron, Maurice, 2006, **Geology and Mineral Potential of Yukon-Tanana Terrane in the Livingstone Creek area (NTS 105E/8), South Central Yukon**; Yukon Geological Survey p. 93-107.

3) Colpron, Maurice, 2006 Geological Map (in part) is reproduced in this report.

4) R.B.K. Shives et al, **“The detection of Potassic Alteration by Gamma Ray Spectrometry – Recognition Related to Mineralization,”** published in *Exploration 97*.

EXPLORATION COSTS ASSOCIATED WITH THE LIVINGSTONE PROPERTY BETWEEN Aug 21st and Sep 22nd - 2011	Whitehorse Liv1 to Liv 66		
	ITEM	COST/ UNIT	UNIT AMOUNT
Huges 500D Helicopter - Helidynamics	\$ 1,215.00	12.3	\$ 14,944.50
Huges 500D Helicopter - Prism	\$ 1,215.00	6.5	\$ 7,897.50
Alkan Air (WH to LIV)	\$ 16,138.50	1	\$ 16,138.50
ROCK ASSAY	\$ 28.88	68	\$ 1,963.84
SOIL ASSAY	\$ 18.00	1	\$ 18.00
Geologist - 2 x \$450 each	\$ 900.00	11	\$ 9,900.00
Geophysist - Ron Sheldrake	\$ 500.00	11	\$ 5,500.00
1 x Prospector 450 / day	\$ 450.00	11	\$ 4,950.00
Hotel and Accomodation /\$ 129.00 / Night (Pilot and Geologist-Whitehorse)	\$ 258.00	11	\$ 2,838.00
		TOTAL	\$ 64,150.34

Dubhi Mac Beathaich
15-Nov-2011



APPENDIX 1 – APPLICATION FOR A CERTIFICATE OF WORK (2 PAGES)

Yukon
Energy, Mines and Resources

QUARTZ MINING ACT FORM 4 SECTION 56
APPLICATION FOR A CERTIFICATE OF WORK
Version française

I, DAITHI MAC GEARAILT

of BOX 1485, DAWSON CITY, YT, Y0B-1G0

Phone 867-993-5202

make oath and say that:

- I am the owner, or agent of the owner, of the mineral claim(s) to which reference is made herein.
- I have done, or caused to be done, work, on the following mineral claim(s): (Here list claims on which work was actually done by number and name)
LIV 47 - (YD119057) + LIV 48 - (YD119058) + LIV 50 - (YD119060) + LIV 56 - (YD119066)
See attached MAP-2 for illustration of claims worked

situated at Cotoneva Creek / Lake Creek / Summit Creek Claim sheet No. 105e08

in the Whitehorse Mining District, to the value of at least \$64,150.34 dollars,

since the 21st day of August 2011

to represent the following mineral claims under the authority of Grouping Certificate No. _____
(Here list claims to be renewed in numerical order, by grant number and claim name, showing renewal period requested).
YD119011 to YD119076 (LIV-1 to LIV-66)

Please renew all claims for 5 years

Please find attached a statement of costs associated with the 2011 Livingstone Project.

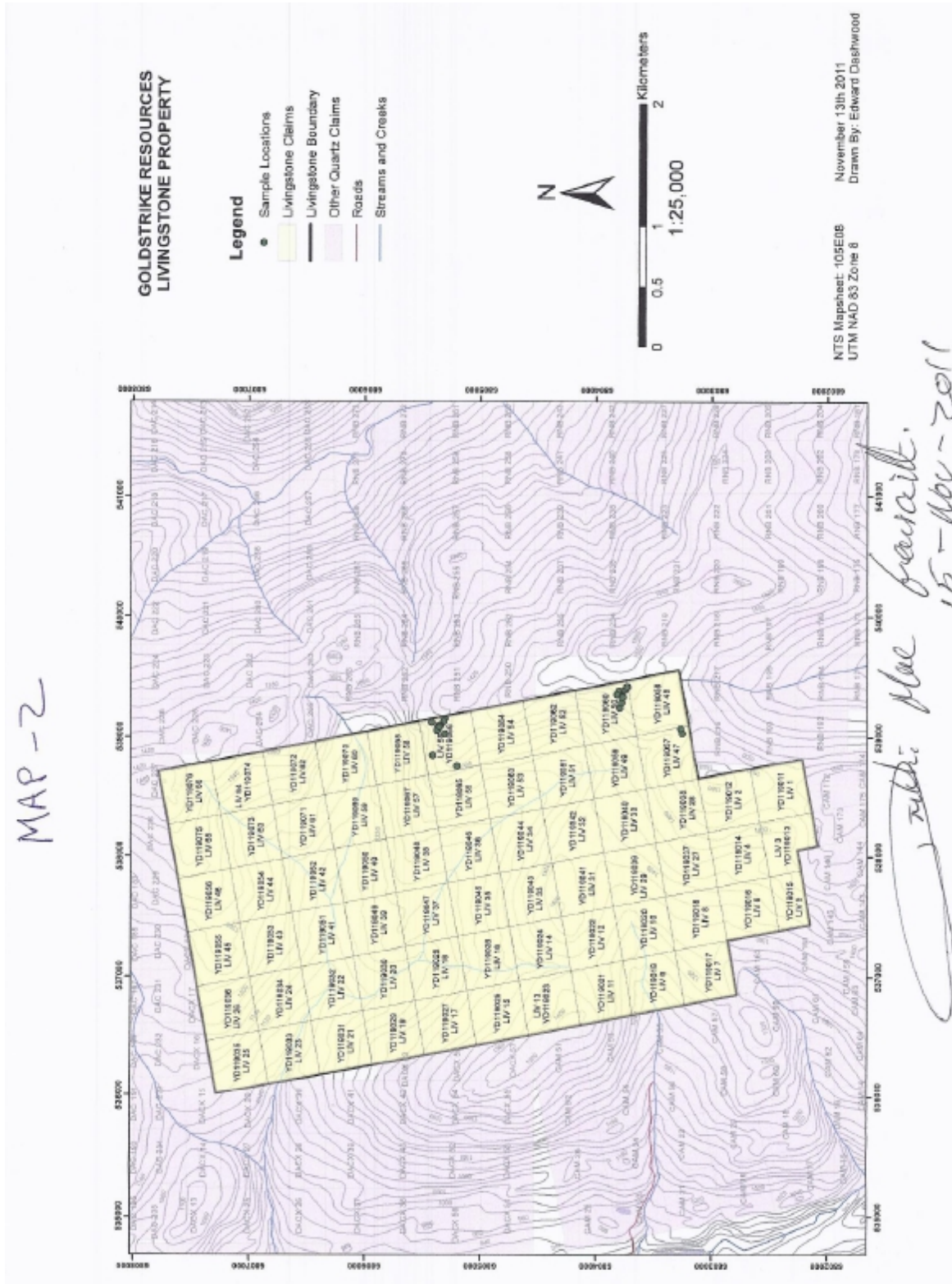
- The following is a detailed statement of such work: (Set out full particulars of the work done indicating dates work commenced and ended in the twelve months in which such work is required to be done as shown by Section 56).
A prospecting, soil sampling, rock sampling and geophysical survey was conducted on behalf of Goldstrike Resources Ltd.
between the dates of August 21st and September 22nd - 2011
LIV 1 to 66 were staked on the 11/11/2010 and expire on the 30/11/2011

Sworn before me at Dawson, Y.T. this 15 day of Nov. 2011.

[Signature]
Notary Public

[Signature]
Owner or Authorized Agent

Access to Information and Protection of Privacy Act
The personal information requested on this form is collected under the authority of and used for the purpose of administering the Quartz Mining Act. Questions about the collection and use of this information can be directed to the Mining Records Office, Mineral Resources, Department of Energy, Mines and Resources, Yukon Government, Box 2703, Whitehorse, Yukon Territory, Y1A 2C6 (867) 667-3199
YQ(2010Q)F3 042903



APPENDIX 2 – APPLICATION TO GROUP MINERAL CLAIMS

Office Use Only

QUARTZ MINING ACT FORM 12 SECTION 55

APPLICATION TO GROUP MINERAL CLAIMS

WHITEHORSE MINING DISTRICT

Office Date Stamp

I, (We) the undersigned owners or agent(s) of the owners of following mineral claims.
(Additional sheets or an appendix may be used) (Claim names and grant numbers to be listed in sequence eg. TOM 1-40, YC10001 - YC10040)

GRANT NUMBER	CLAIM NAME	MAP SHEET
Y0119011 to Y0119076	LIV I to LIV 66	105E08

Give notice of intention to group the said claims for the performance of work and do hereby apply under the provisions of section 55 of the *Quartz Mining Act* for a certificate in form 6.

I (We) hereby certify that the above claims are adjoining as shown on the attached sketch

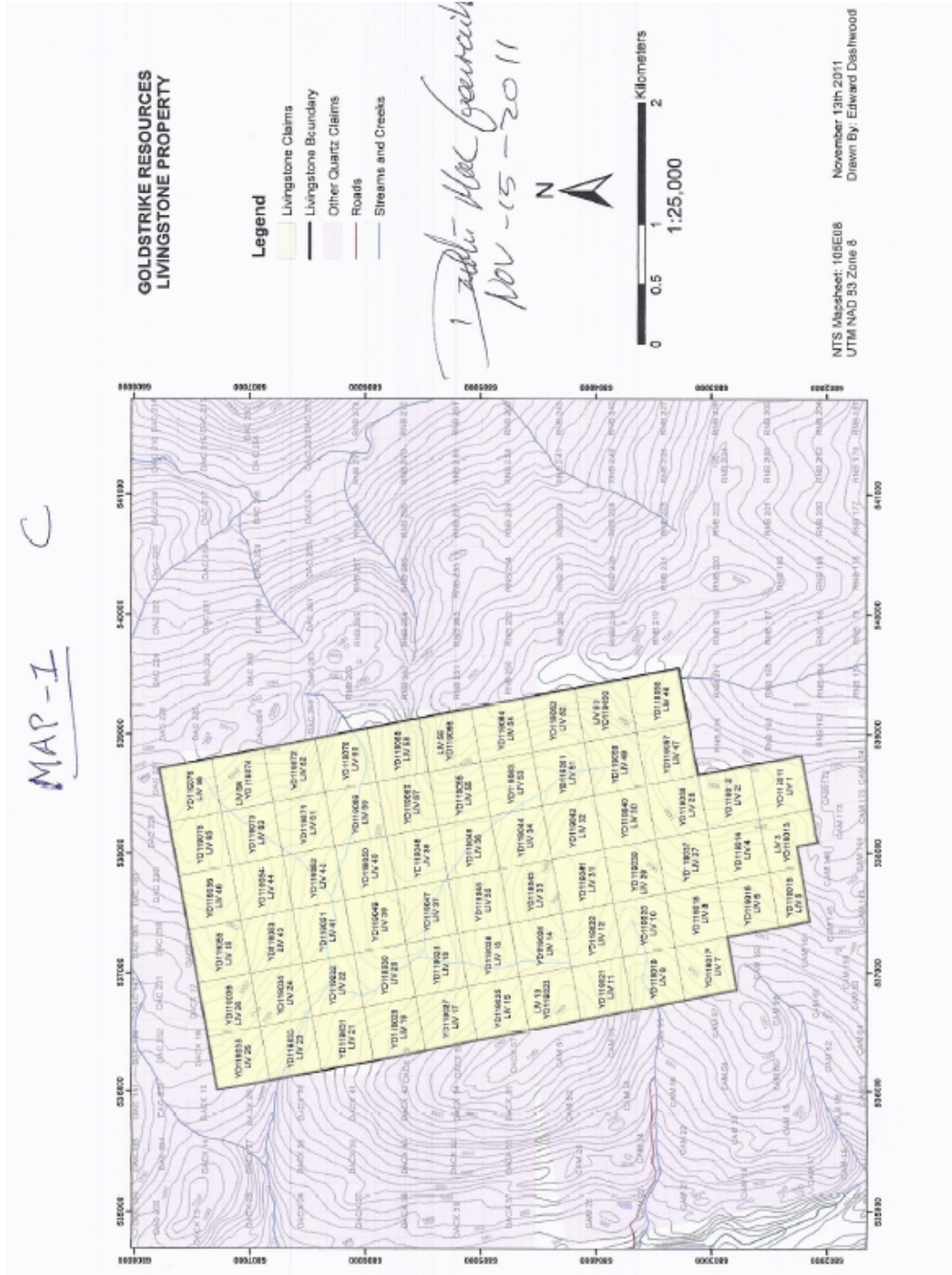
Dated at Dawson, Y.T.

This 15 day of Nov., 20 11

Applicant(s)

Access to Information and Protection of Privacy Act
 The personal information requested on this form is collected under the authority of and used for the purpose of administering the *Quartz Mining Act*.
 Questions about the collection and use of this information can be directed to the Mining Records Office, Mineral Resources, Department of Energy, Mines and Resources,
 Yukon Government, Box 2703, Whitehorse, Yukon Territory, Y1A 2C6 (867) 667-3190
 YG(S04REQ)F1 Rev. 04/2009

APPENDIX 3 – GROUPING MAP



APPENDIX 4 – STATEMENT OF QUALIFICATIONS, R. SHELDRAKE

I, **Ronald F. Sheldrake**, do certify that:

1. I received my B.Sc. in Geophysics from the University of British Columbia in 1974.
2. I have practised the profession of exploration geophysics in excess of thirty years.
3. I have held senior management positions with World Geoscience Inc.
4. I was past owner of Apex Airborne Surveys Ltd.
5. This report is written solely by Ronald F. Sheldrake, except where other credit is given.
6. I have no interest in, either direct, indirect or contingent in Druid Explorations Inc. or Goldstrike Resources Ltd. or any of their associated companies.

April 2012



Ronald F. Sheldrake
EarthWorks Geophysical Consultants
White Rock, B.C.



1020 Cordova St. East Vancouver BC V6A 4A3 Canada

Acme Analytical Laboratories (Vancouver) Ltd.

www.acmelab.com

Client: Goldstrike Resources (Petro One Energy Corp)
1300 - 111 West Georgia Street
Vancouver BC V6E 4M3 Canada

Submitted By: Email Distribution List
Receiving Lab: Canada-Whitehorse
Received: August 31, 2011
Report Date: September 26, 2011
Page: 1 of 3

CERTIFICATE OF ANALYSIS

WHI11001284.1

CLIENT JOB INFORMATION

Project: LIV
Shipment ID: LIV-1
P.O. Number
Number of Samples: 31

SAMPLE DISPOSAL

RTRN-PLP Return
RTRN-RJT Return

Acme does not accept responsibility for samples left at the laboratory after 90 days without prior written instructions for sample storage or return.

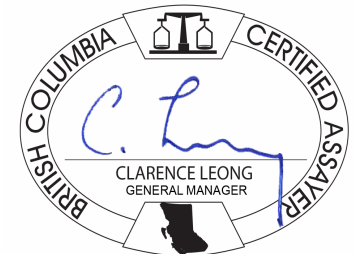
Invoice To: Goldstrike Resources (Petro One Energy Corp)
1300 - 111 West Georgia Street
Vancouver BC V6E 4M3
Canada

CC:

SAMPLE PREPARATION AND ANALYTICAL PROCEDURES

Method Code	Number of Samples	Code Description	Test Wgt (g)	Report Status	Lab
R200-250	31	Crush, split and pulverize 250 g rock to 200 mesh			WHI
3B	31	Fire assay fusion Au by ICP-ES	30	Completed	VAN
1DX	31	1:1:1 Aqua Regia digestion ICP-MS analysis	0.5	Completed	VAN

ADDITIONAL COMMENTS



This report supersedes all previous preliminary and final reports with this file number dated prior to the date on this certificate. Signature indicates final approval; preliminary reports are unsigned and should be used for reference only. All results are considered the confidential property of the client. Acme assumes the liabilities for actual cost of analysis only. Results apply to samples as submitted. ** asterisk indicates that an analytical result could not be provided due to unusually high levels of interference from other elements.



Acme Analytical Laboratories (Vancouver) Ltd.
 1020 Cordova St. East Vancouver BC V6A 4A3 Canada
 Phone (604) 253-3158 Fax (604) 253-1716

www.acmelab.com

Client: **Goldstrike Resources (Petro One Energy Co)**
 1300 - 111 West Georgia Street
 Vancouver BC V6E 4M3 Canada

Project: LIV
 Report Date: September 26, 2011

Page: 2 of 3 Part 1

CERTIFICATE OF ANALYSIS

WHI11001284.1

Method	WGHT	3B	1DX	1DX	1DX	1DX	1DX	1DX	1DX	1DX	1DX	1DX	1DX	1DX	1DX	1DX	1DX	1DX	1DX	1DX	
Analyte	Wgt	Au	Mo	Cu	Pb	Zn	Ag	Ni	Co	Mn	Fe	As	Au	Th	Sr	Cd	Sb	Bi	V	Ca	
Unit	kg	ppb	ppm	ppm	ppm	ppm	ppm	ppm	ppm	ppm	%	ppm	ppb	ppm	ppm	ppm	ppm	ppm	ppm	%	
MDL	0.01	2	0.1	0.1	0.1	1	0.1	0.1	0.1	1	0.01	0.5	0.5	0.1	1	0.1	0.1	0.1	2	0.01	
1233651	Rock	0.91	<2	1.5	203.2	10.6	71	0.1	59.7	30.7	417	3.30	3.3	<0.5	1.5	42	0.2	<0.1	<0.1	51	1.34
1233652	Rock	0.62	<2	3.0	22.1	4.0	26	<0.1	10.9	1.7	39	1.22	2.0	0.5	0.9	24	<0.1	<0.1	<0.1	14	0.09
1233653	Rock	0.95	<2	3.7	90.2	4.2	54	<0.1	33.7	18.8	352	2.84	2.4	<0.5	2.6	23	0.1	<0.1	<0.1	45	0.87
1233654	Rock	0.63	<2	2.7	10.2	4.9	11	<0.1	2.1	1.1	23	0.49	1.2	<0.5	<0.1	2	<0.1	<0.1	<0.1	<2	0.05
1233655	Rock	1.08	<2	0.2	9.2	4.0	16	<0.1	7.4	3.4	197	0.97	1.1	<0.5	6.1	2	<0.1	<0.1	<0.1	2	0.06
1233656	Rock	0.81	11	0.2	64.7	3.7	82	<0.1	40.3	12.5	341	3.20	2.7	8.4	3.7	14	<0.1	0.1	<0.1	47	0.19
1233657	Rock	0.75	9	0.2	17.1	22.2	21	0.2	13.8	4.1	115	1.73	10.4	6.9	0.7	2	<0.1	0.2	<0.1	9	0.02
1233658	Rock	1.67	10	0.3	97.7	9.7	60	0.2	6.5	11.5	971	2.64	1.0	11.3	0.9	130	0.2	0.1	<0.1	59	4.52
1233659	Rock	0.83	<2	<0.1	13.6	2.2	30	<0.1	2.1	5.9	378	1.30	<0.5	0.6	3.2	17	<0.1	<0.1	<0.1	18	0.25
1233660	Rock	1.86	356	3.0	17.6	9.5	8	2.2	2.5	1.9	376	1.05	7.3	306.1	8.1	20	<0.1	<0.1	1.2	<2	1.46
1233661	Rock	0.77	3	0.3	74.5	3.6	74	0.1	16.8	17.9	538	3.42	1.1	16.2	0.5	50	<0.1	<0.1	<0.1	64	1.42
1233662	Rock	1.95	<2	0.2	2.2	9.8	10	<0.1	3.5	2.4	619	1.28	1.5	6.9	5.4	94	<0.1	<0.1	0.1	16	2.94
1233663	Rock	1.09	<2	0.4	28.4	6.6	41	<0.1	13.7	8.4	268	1.50	2.9	3.4	13.7	32	<0.1	0.2	<0.1	17	0.89
1233664	Rock	1.80	33	2.0	370.8	2191	2053	1.9	1.9	3.7	472	0.41	<0.5	70.8	3.7	69	8.0	2.4	1.9	<2	5.85
1233702	Rock	0.71	151	2.2	79.7	29.3	63	0.4	72.1	17.7	619	3.60	40.9	147.9	5.0	5	0.2	1.0	0.5	50	0.08
1233703	Rock	1.51	20	0.6	67.1	27.0	81	0.2	34.8	5.9	234	2.76	76.0	21.2	5.0	15	0.5	4.7	0.2	19	0.34
1233704	Rock	1.72	<2	0.3	12.5	7.7	45	<0.1	27.0	11.9	941	1.74	0.8	5.2	12.3	8	<0.1	<0.1	0.2	8	0.38
1233705	Rock	1.28	<2	0.1	9.9	5.5	7	<0.1	0.7	0.7	55	0.30	<0.5	1.8	16.2	56	<0.1	<0.1	<0.1	<2	0.23
1233706	Rock	2.55	802	1.8	1397	5924	33	27.0	4.9	2.4	158	0.88	<0.5	584.7	1.2	125	6.0	47.5	34.2	5	2.22
1233707	Rock	2.05	724	0.3	1319	4900	7	23.1	2.9	1.6	133	0.71	<0.5	621.7	0.4	115	2.0	0.4	28.2	2	2.01
1233708	Rock	0.88	14	0.1	42.7	85.7	109	0.4	32.7	13.2	926	2.24	<0.5	7.1	8.6	208	0.4	0.4	0.7	34	3.43
1233709	Rock	1.19	3	2.2	22.0	21.7	14	0.1	4.4	3.0	267	0.75	<0.5	2.8	26.9	15	0.1	<0.1	0.3	<2	0.57
1233710	Rock	1.01	18	0.2	24.3	16.8	53	0.1	13.8	8.4	252	1.02	0.8	3.0	11.8	150	0.1	0.3	0.2	14	4.73
1233601	Rock	1.04	18	3.1	14.7	5.8	10	0.1	3.1	0.6	131	0.98	6.3	2.4	1.9	15	<0.1	0.3	<0.1	60	0.13
1233602	Rock	1.17	<2	6.3	30.2	3.0	9	<0.1	14.7	3.7	46	0.64	1.0	1.6	0.3	18	<0.1	<0.1	<0.1	27	0.18
1233603	Rock	1.36	10	0.1	14.4	2.4	26	<0.1	4.9	17.5	506	2.17	0.9	8.8	0.8	43	<0.1	0.2	<0.1	46	1.22
1233604	Rock	1.22	34	2.3	590.7	4.8	69	1.2	5.3	13.2	1654	3.42	<0.5	21.7	0.4	157	0.4	0.1	<0.1	73	5.42
1233605	Rock	0.72	<2	0.1	5.9	14.6	13	<0.1	3.7	1.7	196	0.70	<0.5	1.7	4.5	17	<0.1	<0.1	<0.1	5	0.20
1233606	Rock	0.77	4	0.7	38.7	101.5	38	0.4	2.9	10.6	520	2.26	1.1	3.8	2.2	36	<0.1	<0.1	0.4	41	0.97
1233607	Rock	0.86	<2	0.1	19.1	4.7	30	<0.1	13.1	10.9	251	1.13	0.6	1.0	4.7	168	<0.1	0.2	<0.1	11	6.15

This report supersedes all previous preliminary and final reports with this file number dated prior to the date on this certificate. Signature indicates final approval; preliminary reports are unsigned and should be used for reference only.



Acme Analytical Laboratories (Vancouver) Ltd.
 1020 Cordova St. East Vancouver BC V6A 4A3 Canada
 Phone (604) 253-3158 Fax (604) 253-1716

www.acmelab.com

Client: **Goldstrike Resources (Petro One Energy Co**
 1300 - 111 West Georgia Street
 Vancouver BC V6E 4M3 Canada

Project: LIV
 Report Date: September 26, 2011

Page: 2 of 3 Part 2

CERTIFICATE OF ANALYSIS

WHI11001284.1

Method	1DX	1DX	1DX	1DX	1DX	1DX	1DX	1DX	1DX	1DX	1DX	1DX	1DX	1DX	1DX	1DX	1DX	1DX	1DX
Analyte	P	La	Cr	Mg	Ba	Ti	B	Al	Na	K	W	Hg	Tl	S	Sc	Se	Ga	Te	
Unit	%	ppm	ppm	%	ppm	%	ppm	%	%	%	ppm	ppm	ppm	%	ppm	ppm	ppm	ppm	
MDL	0.001	1	1	0.01	1	0.001	20	0.01	0.001	0.01	0.1	0.01	0.1	0.05	0.1	0.5	1	0.2	
1233651	Rock	0.284	9	36	1.26	33	0.167	<20	1.79	0.103	0.05	<0.1	<0.01	<0.1	0.43	3.0	<0.5	4	<0.2
1233652	Rock	0.054	3	6	0.05	29	0.024	<20	0.22	0.015	0.02	<0.1	<0.01	<0.1	0.28	0.9	1.0	<1	<0.2
1233653	Rock	0.183	9	34	1.09	24	0.146	<20	1.52	0.090	0.05	<0.1	<0.01	<0.1	0.25	2.7	<0.5	5	<0.2
1233654	Rock	0.001	<1	2	0.02	12	0.002	<20	0.04	0.008	0.01	<0.1	<0.01	<0.1	0.11	<0.1	<0.5	<1	<0.2
1233655	Rock	0.007	10	5	0.15	23	0.001	<20	0.42	0.009	0.10	<0.1	<0.01	<0.1	<0.05	0.8	<0.5	<1	<0.2
1233656	Rock	0.054	9	32	1.14	135	0.057	<20	1.76	0.019	0.26	<0.1	<0.01	<0.1	<0.05	4.1	<0.5	5	<0.2
1233657	Rock	0.009	2	11	0.18	26	0.004	<20	0.28	0.007	0.05	<0.1	<0.01	<0.1	<0.05	0.8	<0.5	<1	<0.2
1233658	Rock	0.065	5	6	0.98	720	0.075	<20	1.19	0.035	0.15	0.6	<0.01	<0.1	<0.05	5.2	<0.5	5	<0.2
1233659	Rock	0.021	5	3	0.49	68	0.037	<20	0.86	0.064	0.32	<0.1	<0.01	<0.1	<0.05	1.5	<0.5	3	<0.2
1233660	Rock	0.007	13	3	0.46	24	<0.001	<20	0.14	0.031	0.04	<0.1	<0.01	<0.1	<0.05	0.8	<0.5	<1	1.7
1233661	Rock	0.054	2	15	1.60	48	0.102	<20	2.06	0.053	0.08	0.1	<0.01	<0.1	0.10	2.8	<0.5	5	<0.2
1233662	Rock	0.075	12	11	0.25	44	0.116	<20	0.87	0.036	<0.01	<0.1	<0.01	<0.1	<0.05	1.4	<0.5	3	<0.2
1233663	Rock	0.015	20	20	0.35	39	0.107	<20	0.67	0.039	0.09	0.2	<0.01	<0.1	0.21	1.3	<0.5	3	<0.2
1233664	Rock	0.004	3	2	0.03	11	0.002	<20	0.09	0.011	0.03	<0.1	2.61	<0.1	0.16	0.5	6.5	<1	0.5
1233702	Rock	0.046	14	53	0.68	96	0.005	<20	1.13	0.032	0.11	<0.1	0.02	<0.1	<0.05	4.7	0.8	5	0.4
1233703	Rock	0.127	16	21	0.54	140	0.003	<20	1.00	0.006	0.22	<0.1	0.17	<0.1	<0.05	2.3	<0.5	3	<0.2
1233704	Rock	0.024	26	8	0.53	90	0.005	<20	0.93	0.016	0.31	0.1	0.01	<0.1	<0.05	1.5	<0.5	3	<0.2
1233705	Rock	0.005	9	2	0.02	274	0.001	<20	0.15	0.067	<0.01	<0.1	0.01	<0.1	<0.05	0.5	<0.5	<1	<0.2
1233706	Rock	0.006	5	4	0.04	341	0.002	<20	0.09	0.019	0.01	<0.1	0.31	<0.1	0.48	0.5	30.4	<1	7.1
1233707	Rock	0.004	2	2	0.01	270	0.002	<20	0.05	0.015	0.01	<0.1	0.10	<0.1	0.44	0.2	25.2	<1	6.2
1233708	Rock	0.034	25	33	0.95	47	0.062	<20	1.54	0.049	0.16	<0.1	0.01	<0.1	0.06	3.6	<0.5	7	<0.2
1233709	Rock	0.006	16	<1	0.02	22	<0.001	<20	0.15	0.075	0.03	<0.1	0.01	<0.1	0.14	1.3	<0.5	<1	<0.2
1233710	Rock	0.033	24	17	0.17	28	0.132	<20	0.90	0.013	0.05	0.3	0.03	<0.1	0.28	1.8	<0.5	2	<0.2
1233601	Rock	0.051	6	15	0.19	35	0.015	<20	0.38	0.007	0.02	<0.1	<0.01	<0.1	<0.05	1.7	0.9	2	<0.2
1233602	Rock	0.042	1	5	0.06	6	0.015	<20	0.21	0.003	<0.01	0.2	<0.01	<0.1	0.15	0.4	0.8	<1	<0.2
1233603	Rock	0.042	4	4	0.38	483	0.031	<20	0.43	0.133	0.01	<0.1	0.01	<0.1	0.56	3.6	0.6	2	<0.2
1233604	Rock	0.070	3	<1	1.03	130	0.023	<20	1.21	0.037	0.25	<0.1	<0.01	<0.1	0.12	7.4	<0.5	5	<0.2
1233605	Rock	0.028	16	5	0.15	61	0.002	<20	0.46	0.040	0.17	0.1	<0.01	<0.1	<0.05	1.1	<0.5	2	<0.2
1233606	Rock	0.044	3	6	0.83	126	0.090	<20	1.25	0.073	0.25	<0.1	0.01	<0.1	0.06	3.5	<0.5	4	0.2
1233607	Rock	0.024	10	12	0.22	28	0.094	<20	0.63	0.020	0.12	0.1	<0.01	<0.1	0.33	1.3	<0.5	2	<0.2

This report supersedes all previous preliminary and final reports with this file number dated prior to the date on this certificate. Signature indicates final approval; preliminary reports are unsigned and should be used for reference only.



Acme Analytical Laboratories (Vancouver) Ltd.

1020 Cordova St. East Vancouver BC V6A 4A3 Canada

Phone (604) 253-3158 Fax (604) 253-1716

www.acmelab.com

Client: Goldstrike Resources (Petro One Energy Co

1300 - 111 West Georgia Street

Vancouver BC V6E 4M3 Canada

Project: LIV

Report Date: September 26, 2011

Page: 3 of 3 Part 1

CERTIFICATE OF ANALYSIS

WHI11001284.1

Method	WGHT	3B	1DX	1DX	1DX	1DX	1DX	1DX	1DX	1DX	1DX	1DX	1DX	1DX	1DX	1DX	1DX	1DX	1DX	1DX	
Analyte	Wgt	Au	Mo	Cu	Pb	Zn	Ag	Ni	Co	Mn	Fe	As	Au	Th	Sr	Cd	Sb	Bi	V	Ca	
Unit	kg	ppb	ppm	ppm	ppm	ppm	ppm	ppm	ppm	ppm	%	ppm	ppb	ppm	ppm	ppm	ppm	ppm	ppm	%	
MDL	0.01	2	0.1	0.1	0.1	1	0.1	0.1	0.1	1	0.01	0.5	0.5	0.1	1	0.1	0.1	0.1	2	0.01	
1233608	Rock	1.34	6	0.6	52.8	7.4	19	0.4	16.7	5.3	136	1.62	0.8	8.5	3.7	6	<0.1	<0.1	<0.1	11	0.10



Acme Analytical Laboratories (Vancouver) Ltd.
 1020 Cordova St. East Vancouver BC V6A 4A3 Canada
 Phone (604) 253-3158 Fax (604) 253-1716

www.acmelab.com

Client: **Goldstrike Resources (Petro One Energy Co**
 1300 - 111 West Georgia Street
 Vancouver BC V6E 4M3 Canada

Project: LIV
 Report Date: September 26, 2011

Page: 3 of 3 Part 2

CERTIFICATE OF ANALYSIS

WHI11001284.1

Method	1DX	1DX	1DX	1DX	1DX	1DX	1DX	1DX	1DX	1DX	1DX	1DX	1DX	1DX	1DX	1DX	1DX	1DX	
Analyte	P	La	Cr	Mg	Ba	Ti	B	Al	Na	K	W	Hg	Tl	S	Sc	Se	Ga	Te	
Unit	%	ppm	ppm	%	ppm	%	ppm	%	%	%	ppm	ppm	ppm	%	ppm	ppm	ppm	ppm	
MDL	0.001	1	1	0.01	1	0.001	20	0.01	0.001	0.01	0.1	0.01	0.1	0.05	0.1	0.5	1	0.2	
1233608	Rock	0.015	3	12	0.23	24	0.051	<20	0.35	0.044	0.04	0.1	<0.01	<0.1	0.22	1.1	<0.5	2	<0.2



Acme Analytical Laboratories (Vancouver) Ltd.

1020 Cordova St. East Vancouver BC V6A 4A3 Canada
Phone (604) 253-3158 Fax (604) 253-1716

www.acmelab.com

Client: **Goldstrike Resources (Petro One Energy Co**
1300 - 111 West Georgia Street
Vancouver BC V6E 4M3 Canada

Project: LIV

Report Date: September 26, 2011

Page: 1 of 1 Part 1

QUALITY CONTROL REPORT

WHI11001284.1

Method	WGHT	3B	1DX	1DX	1DX	1DX	1DX	1DX	1DX	1DX	1DX	1DX	1DX	1DX	1DX	1DX	1DX	1DX	1DX	1DX	
Analyte	Wgt	Au	Mo	Cu	Pb	Zn	Ag	Ni	Co	Mn	Fe	As	Au	Th	Sr	Cd	Sb	Bi	V	Ca	
Unit	kg	ppb	ppm	ppm	ppm	ppm	ppm	ppm	ppm	ppm	%	ppm	ppb	ppm	ppm	ppm	ppm	ppm	ppm	%	
MDL	0.01	2	0.1	0.1	0.1	1	0.1	0.1	0.1	1	0.01	0.5	0.5	0.1	1	0.1	0.1	0.1	2	0.01	
Pulp Duplicates																					
1233659	Rock	0.83	<2	<0.1	13.6	2.2	30	<0.1	2.1	5.9	378	1.30	<0.5	0.6	3.2	17	<0.1	<0.1	<0.1	18	0.25
REP 1233659	QC			0.1	13.0	2.1	29	<0.1	2.2	5.8	373	1.29	<0.5	2.0	3.2	19	<0.1	<0.1	0.1	19	0.27
1233603	Rock	1.36	10	0.1	14.4	2.4	26	<0.1	4.9	17.5	506	2.17	0.9	8.8	0.8	43	<0.1	0.2	<0.1	46	1.22
REP 1233603	QC		12																		
Core Reject Duplicates																					
1233710	Rock	1.01	18	0.2	24.3	16.8	53	0.1	13.8	8.4	252	1.02	0.8	3.0	11.8	150	0.1	0.3	0.2	14	4.73
DUP 1233710	QC		3	0.2	25.5	15.9	55	0.1	13.5	8.4	231	0.89	0.7	2.3	11.7	139	0.1	0.2	0.2	12	4.58
Reference Materials																					
STD DS8	Standard			14.7	112.6	132.9	307	2.1	39.0	8.1	611	2.52	24.8	140.9	6.9	61	2.3	4.3	6.0	43	0.71
STD OREAS45CA	Standard			0.8	534.1	21.5	67	0.3	260.3	96.2	949	16.67	3.6	49.6	7.2	14	0.1	<0.1	0.2	212	0.45
STD OXC88	Standard		201																		
STD OXC88	Standard		203																		
STD OXH82	Standard		1333																		
STD OXC88 Expected			203																		
STD OXH82 Expected			1278																		
STD DS8 Expected			13.44	110	123	312	1.69	38.1	7.5	615	2.46	26	107	6.89	67.7	2.38	4.8	6.67	41.1	0.7	
STD OREAS45CA Expected			1	494	20	60	0.275	240	92	943	15.69	3.8	43	7	15	0.1	0.13	0.19	215	0.4265	
BLK	Blank		<2																		
BLK	Blank		<2																		
BLK	Blank		<2																		
BLK	Blank		<0.1	<0.1	<0.1	<1	<0.1	<0.1	<0.1	<1	<0.01	<0.5	<0.5	<0.1	<1	<0.1	<0.1	<0.1	<2	<0.01	
Prep Wash																					
G1	Prep Blank		2	0.3	4.5	8.3	53	<0.1	2.6	3.8	552	1.98	<0.5	2.0	6.1	60	<0.1	<0.1	<0.1	38	0.47
G1	Prep Blank		<2	0.2	2.6	5.2	48	<0.1	2.4	3.8	565	1.97	<0.5	1.8	5.7	56	<0.1	<0.1	<0.1	39	0.49



Acme Analytical Laboratories (Vancouver) Ltd.

1020 Cordova St. East Vancouver BC V6A 4A3 Canada
 Phone (604) 253-3158 Fax (604) 253-1716

www.acmelab.com

Client: **Goldstrike Resources (Petro One Energy Co)**
 1300 - 111 West Georgia Street
 Vancouver BC V6E 4M3 Canada

Project: LIV

Report Date: September 26, 2011

Page: 1 of 1 Part 2

QUALITY CONTROL REPORT

WHI11001284.1

Method		1DX	1DX	1DX	1DX	1DX	1DX	1DX	1DX	1DX	1DX	1DX	1DX	1DX	1DX	1DX	1DX	1DX		
Analyte		P	La	Cr	Mg	Ba	Ti	B	Al	Na	K	W	Hg	Tl	S	Sc	Se	Ga	Te	
Unit		%	ppm	ppm	%	ppm	%	ppm	%	%	%	ppm	ppm	ppm	%	ppm	ppm	ppm	ppm	
MDL		0.001	1	1	0.01	1	0.001	20	0.01	0.001	0.01	0.1	0.01	0.1	0.05	0.1	0.5	1	0.2	
Pulp Duplicates																				
1233659	Rock	0.021	5	3	0.49	68	0.037	<20	0.86	0.064	0.32	<0.1	<0.01	<0.1	<0.05	1.5	<0.5	3	<0.2	
REP 1233659	QC	0.021	5	2	0.48	69	0.038	<20	0.86	0.062	0.32	<0.1	<0.01	0.1	<0.05	1.5	<0.5	2	<0.2	
1233603	Rock	0.042	4	4	0.38	483	0.031	<20	0.43	0.133	0.01	<0.1	0.01	<0.1	0.56	3.6	0.6	2	<0.2	
REP 1233603	QC																			
Core Reject Duplicates																				
1233710	Rock	0.033	24	17	0.17	28	0.132	<20	0.90	0.013	0.05	0.3	0.03	<0.1	0.28	1.8	<0.5	2	<0.2	
DUP 1233710	QC	0.033	25	15	0.17	22	0.109	<20	0.76	0.010	0.04	0.3	0.04	<0.1	0.28	1.7	<0.5	2	<0.2	
Reference Materials																				
STD DS8	Standard	0.077	15	118	0.61	295	0.108	<20	0.91	0.091	0.41	2.8	0.21	5.7	0.17	2.1	4.9	5	5.1	
STD OREAS45CA	Standard	0.039	17	772	0.16	161	0.129	<20	3.90	0.007	0.08	<0.1	0.03	0.1	<0.05	38.9	0.5	20	<0.2	
STD OXC88	Standard																			
STD OXC88	Standard																			
STD OXH82	Standard																			
STD OXC88 Expected																				
STD OXH82 Expected																				
STD DS8 Expected		0.08	14.6	115	0.6045	279	0.113	2.6	0.93	0.0883	0.41	3	0.192	5.4	0.1679	2.3	5.23	4.7	5	
STD OREAS45CA Expected		0.0385	15.9	709	0.1358	164	0.128		3.592	0.0075	0.0717		0.03	0.07	0.021	39.7	0.5	18.4		
BLK	Blank																			
BLK	Blank																			
BLK	Blank																			
BLK	Blank	<0.001	<1	<1	<0.01	<1	<0.001	<20	<0.01	<0.001	<0.01	<0.1	<0.01	<0.1	<0.05	<0.1	<0.5	<1	<0.2	
Prep Wash																				
G1	Prep Blank	0.069	15	5	0.47	152	0.119	<20	0.91	0.105	0.47	0.1	<0.01	0.3	<0.05	2.1	<0.5	5	<0.2	
G1	Prep Blank	0.069	13	5	0.49	152	0.117	<20	0.94	0.098	0.46	<0.1	<0.01	0.3	<0.05	1.9	<0.5	5	<0.2	



1020 Cordova St. East Vancouver BC V6A 4A3 Canada

Acme Analytical Laboratories (Vancouver) Ltd.

www.acmelab.com

Client: Goldstrike Resources (Petro One Energy Corp)
1300 - 111 West Georgia Street
Vancouver BC V6E 4M3 Canada

Submitted By: Email Distribution List
Receiving Lab: Canada-Whitehorse
Received: September 25, 2011
Report Date: November 10, 2011
Page: 1 of 3

CERTIFICATE OF ANALYSIS

WHI11001738.1

CLIENT JOB INFORMATION

Project: LIV
Shipment ID: LIV-SEP-24
P.O. Number
Number of Samples: 37

SAMPLE DISPOSAL

RTRN-PLP Return
RTRN-RJT Return

Acme does not accept responsibility for samples left at the laboratory after 90 days without prior written instructions for sample storage or return.

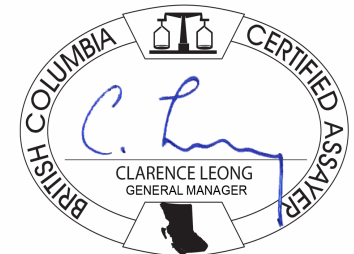
Invoice To: Goldstrike Resources (Petro One Energy Corp)
1300 - 111 West Georgia Street
Vancouver BC V6E 4M3
Canada

CC:

SAMPLE PREPARATION AND ANALYTICAL PROCEDURES

Table with 6 columns: Method Code, Number of Samples, Code Description, Test Wgt (g), Report Status, Lab. Rows include R200-250, 3B, and 1DX.

ADDITIONAL COMMENTS



This report supersedes all previous preliminary and final reports with this file number dated prior to the date on this certificate. Signature indicates final approval; preliminary reports are unsigned and should be used for reference only. All results are considered the confidential property of the client. Acme assumes the liabilities for actual cost of analysis only. Results apply to samples as submitted. ** asterisk indicates that an analytical result could not be provided due to unusually high levels of interference from other elements.



Acme Analytical Laboratories (Vancouver) Ltd.
 1020 Cordova St. East Vancouver BC V6A 4A3 Canada
 Phone (604) 253-3158 Fax (604) 253-1716

www.acmelab.com

Client: **Goldstrike Resources (Petro One Energy Co)**
 1300 - 111 West Georgia Street
 Vancouver BC V6E 4M3 Canada

Project: LIV
 Report Date: November 10, 2011

Page: 2 of 3 Part 1

CERTIFICATE OF ANALYSIS

WHI11001738.1

Method	WGHT	3B	1DX	1DX	1DX	1DX	1DX	1DX	1DX	1DX	1DX	1DX	1DX	1DX	1DX	1DX	1DX	1DX	1DX	1DX	
Analyte	Wgt	Au	Mo	Cu	Pb	Zn	Ag	Ni	Co	Mn	Fe	As	Au	Th	Sr	Cd	Sb	Bi	V	Ca	
Unit	kg	ppb	ppm	ppm	ppm	ppm	ppm	ppm	ppm	ppm	%	ppm	ppb	ppm	ppm	ppm	ppm	ppm	ppm	%	
MDL	0.01	2	0.1	0.1	0.1	1	0.1	0.1	0.1	1	0.01	0.5	0.5	0.1	1	0.1	0.1	0.1	2	0.01	
1240501	Rock	0.95	7865	103.1	91.3	7828	15	>100	3.1	0.3	18	0.98	121.5	8226	0.2	50	0.4	19.3	1.5	11	0.02
1240502	Rock	1.24	23	0.6	13.8	34.5	3	0.6	10.5	5.6	56	0.60	3.9	30.2	0.4	4	<0.1	0.2	<0.1	<2	0.05
1240503	Rock	0.81	4	0.7	92.5	6.8	20	0.2	14.8	20.7	204	2.50	11.7	2.4	15.0	6	<0.1	0.2	0.2	14	0.06
1240504	Rock	1.01	6	3.4	80.7	7.5	48	0.2	38.9	31.9	466	2.48	5.5	6.6	1.0	14	0.2	0.1	<0.1	65	0.74
1240505	Rock	0.95	4	1.9	38.0	37.5	57	0.4	2.1	2.2	201	0.53	0.7	6.0	14.7	18	0.4	<0.1	0.8	<2	1.06
1240506	Rock	1.16	2	0.1	53.7	14.4	19	0.2	17.6	37.6	278	2.65	1.2	4.6	5.6	248	0.1	0.5	0.3	11	2.43
1240507	Rock	0.66	3	2.2	19.8	1.8	1	0.2	1.4	0.5	18	0.45	15.0	3.9	0.1	<1	<0.1	0.9	<0.1	<2	0.01
1240508	Rock	3.55	326	0.5	395.4	3164	6	11.1	2.9	1.4	282	0.42	<0.5	260.9	1.3	264	1.4	0.2	16.0	2	4.68
1240509	Rock	3.10	21	13.4	85.7	496.4	4	2.1	2.2	1.0	169	0.41	0.5	29.8	11.6	24	0.1	0.4	3.7	<2	0.79
1240510	Rock	0.75	4	0.7	155.1	18.5	84	0.2	23.8	10.1	556	4.24	3.0	9.9	8.9	84	<0.1	0.6	0.3	87	1.10
1240511	Rock	0.88	3	0.2	23.5	4.5	133	<0.1	26.6	11.9	1545	2.00	0.8	4.8	3.7	203	0.4	0.7	0.3	15	8.56
1240512	Rock	3.11	5	0.1	17.6	32.8	106	0.1	30.3	10.5	965	1.54	1.0	4.2	7.4	382	0.4	0.5	0.3	17	4.44
1240513	Rock	1.16	127	0.3	60.4	1432	26	4.9	10.5	3.2	546	0.71	<0.5	137.9	0.6	49	0.7	<0.1	7.6	6	1.58
1240514	Rock	2.04	4	1.1	22.0	14.7	16	0.2	9.0	3.7	283	0.82	0.6	13.0	17.1	17	0.2	0.1	0.2	3	0.51
1240515	Rock	0.65	<2	2.7	40.1	4.1	2	<0.1	1.4	0.7	24	0.45	20.5	4.7	0.2	2	<0.1	1.3	<0.1	<2	0.03
1240516	Rock	1.20	<2	3.2	46.9	3.8	1	<0.1	1.6	1.3	20	0.45	12.7	3.2	0.2	2	<0.1	1.0	<0.1	<2	0.01
1240517	Rock	1.26	<2	3.2	27.6	3.2	5	<0.1	1.8	0.4	22	0.49	41.0	2.0	0.3	2	<0.1	1.1	<0.1	4	0.04
1240518	Rock	1.13	<2	5.5	70.1	2.5	44	<0.1	8.3	1.6	149	1.15	236.4	0.5	3.2	14	0.1	2.7	<0.1	45	0.28
1240519	Rock	1.93	<2	13.7	26.3	4.5	7	<0.1	12.6	3.2	58	1.76	16.8	2.1	1.1	8	<0.1	1.1	<0.1	32	0.02
1240520	Rock	1.26	<2	2.3	130.7	2.7	12	0.3	70.4	30.5	255	4.50	<0.5	1.8	1.9	22	<0.1	<0.1	0.3	74	1.12
1240521	Rock	2.39	13	3.5	71.3	92.0	159	0.4	314.8	89.6	1988	8.45	24.0	12.1	1.0	122	6.0	0.3	<0.1	101	9.22
1240522	Rock	3.08	21	0.3	10.1	9.4	29	<0.1	86.2	17.4	2175	2.58	2.3	11.4	0.3	2384	0.5	0.1	<0.1	47	26.68
1240551	Rock	2.19	<2	32.6	59.8	10.8	4	0.2	12.1	4.3	98	3.58	1.8	3.1	1.1	20	<0.1	<0.1	0.5	66	0.25
1240552	Rock	0.89	2	13.9	151.1	39.1	8	0.3	21.6	10.3	676	2.47	1.1	<0.5	1.5	46	0.3	0.6	1.4	9	0.89
1240553	Rock	1.77	641	0.7	10.7	60.9	7	1.6	5.3	2.5	413	0.63	5.2	473.2	7.2	5	<0.1	0.6	0.7	2	0.04
1240554	Rock	1.22	102	0.6	6.8	49.4	4	0.5	5.2	2.7	217	0.61	3.3	111.0	9.2	8	<0.1	0.3	0.4	<2	0.05
1240555	Rock	1.16	6	0.4	34.8	2.3	65	<0.1	25.6	10.4	190	3.34	3.1	2.3	19.4	15	<0.1	<0.1	0.1	9	0.40
1240556	Rock	2.30	14	0.2	129.3	8.5	20	0.2	12.2	8.3	421	1.35	0.7	10.1	6.6	19	0.1	<0.1	<0.1	12	0.60
1240557	Rock	1.11	<2	0.4	20.3	1.2	39	<0.1	1.4	7.3	465	2.43	0.6	2.2	0.9	24	<0.1	0.2	<0.1	27	0.45
1219951	Rock	0.83	8	0.6	17.4	1.6	36	<0.1	17.0	3.3	61	0.94	1.7	3.9	0.6	5	0.1	0.1	<0.1	20	0.03

This report supersedes all previous preliminary and final reports with this file number dated prior to the date on this certificate. Signature indicates final approval; preliminary reports are unsigned and should be used for reference only.



Acme Analytical Laboratories (Vancouver) Ltd.
 1020 Cordova St. East Vancouver BC V6A 4A3 Canada
 Phone (604) 253-3158 Fax (604) 253-1716

www.acmelab.com

Client: **Goldstrike Resources (Petro One Energy Co)**
 1300 - 111 West Georgia Street
 Vancouver BC V6E 4M3 Canada

Project: LIV
 Report Date: November 10, 2011

Page: 2 of 3 Part 2

CERTIFICATE OF ANALYSIS

WHI11001738.1

Method	1DX	1DX	1DX	1DX	1DX	1DX	1DX	1DX	1DX	1DX	1DX	1DX	1DX	1DX	1DX	1DX	1DX	1DX	1DX
Analyte	P	La	Cr	Mg	Ba	Ti	B	Al	Na	K	W	Hg	Tl	S	Sc	Se	Ga	Te	
Unit	%	ppm	ppm	%	ppm	%	ppm	%	%	%	ppm	ppm	ppm	%	ppm	ppm	ppm	ppm	
MDL	0.001	1	1	0.01	1	0.001	20	0.01	0.001	0.01	0.1	0.01	0.1	0.05	0.1	0.5	1	0.2	
1240501	Rock	0.121	3	3	<0.01	2419	<0.001	<20	0.12	0.003	0.02	<0.1	0.34	<0.1	0.19	0.4	39.6	<1	115.6
1240502	Rock	0.004	1	1	<0.01	192	<0.001	<20	0.04	0.002	0.02	<0.1	<0.01	<0.1	0.16	0.1	<0.5	<1	0.4
1240503	Rock	0.028	10	27	0.47	85	0.008	<20	1.13	0.063	0.15	<0.1	<0.01	<0.1	0.08	2.7	0.6	4	<0.2
1240504	Rock	0.008	2	120	1.45	25	0.053	<20	1.09	0.024	0.02	<0.1	<0.01	<0.1	0.10	6.9	<0.5	5	0.2
1240505	Rock	0.008	17	<1	0.04	28	<0.001	<20	0.17	0.092	0.02	<0.1	<0.01	<0.1	0.16	0.6	<0.5	<1	<0.2
1240506	Rock	0.054	16	11	0.27	283	0.161	<20	0.80	0.016	<0.01	0.2	0.01	<0.1	1.77	1.8	1.2	3	<0.2
1240507	Rock	0.021	<1	2	<0.01	8	<0.001	<20	0.02	0.002	<0.01	<0.1	0.02	<0.1	0.07	0.2	0.8	<1	<0.2
1240508	Rock	0.006	4	4	0.06	17	0.002	<20	0.09	0.011	0.01	<0.1	0.09	<0.1	0.11	0.6	12.2	<1	2.7
1240509	Rock	0.003	9	<1	0.02	16	<0.001	<20	0.12	0.070	0.02	<0.1	0.02	<0.1	0.06	0.6	1.1	<1	0.3
1240510	Rock	0.468	29	40	1.58	100	0.031	<20	1.99	0.029	0.17	<0.1	0.04	<0.1	0.61	5.7	1.6	8	<0.2
1240511	Rock	0.011	10	18	0.80	53	0.117	<20	1.78	<0.001	0.02	0.2	0.04	<0.1	0.08	2.0	<0.5	4	<0.2
1240512	Rock	0.134	20	20	0.81	209	0.076	<20	1.66	0.035	0.04	0.1	0.02	<0.1	0.05	3.4	<0.5	5	<0.2
1240513	Rock	0.008	3	16	0.21	29	0.005	<20	0.23	0.007	<0.01	<0.1	0.02	<0.1	<0.05	0.9	5.6	1	1.1
1240514	Rock	0.020	15	2	0.04	37	0.002	<20	0.21	0.067	0.07	<0.1	0.01	<0.1	0.19	1.3	<0.5	<1	<0.2
1240515	Rock	0.009	<1	1	<0.01	8	<0.001	<20	0.05	0.003	<0.01	<0.1	<0.01	<0.1	<0.05	0.1	<0.5	<1	<0.2
1240516	Rock	0.006	<1	1	<0.01	10	<0.001	<20	0.04	0.002	<0.01	<0.1	<0.01	<0.1	0.09	<0.1	<0.5	<1	<0.2
1240517	Rock	0.027	1	<1	<0.01	20	<0.001	<20	0.07	0.002	0.03	<0.1	<0.01	<0.1	<0.05	0.3	<0.5	<1	<0.2
1240518	Rock	0.170	15	10	0.18	81	0.001	<20	0.48	0.005	0.08	<0.1	0.02	<0.1	<0.05	2.1	1.1	1	<0.2
1240519	Rock	0.034	8	31	0.25	28	0.002	<20	0.35	0.005	0.04	<0.1	<0.01	<0.1	0.09	1.8	1.8	2	<0.2
1240520	Rock	0.356	21	7	1.22	50	0.047	<20	1.22	0.046	0.05	<0.1	<0.01	<0.1	2.25	4.8	4.2	5	0.4
1240521	Rock	0.192	10	196	0.97	383	0.004	<20	1.15	0.013	0.34	<0.1	0.25	<0.1	0.35	16.4	0.9	4	<0.2
1240522	Rock	0.043	8	97	1.19	201	0.009	<20	1.04	0.008	0.08	<0.1	<0.01	<0.1	0.11	13.9	<0.5	4	<0.2
1240551	Rock	0.014	4	13	0.03	59	0.171	<20	0.18	0.084	0.08	<0.1	<0.01	<0.1	0.49	0.7	1.9	2	<0.2
1240552	Rock	0.054	4	4	0.25	60	0.002	<20	0.30	0.004	0.21	<0.1	<0.01	<0.1	1.04	1.0	1.4	<1	0.3
1240553	Rock	0.010	17	2	0.03	117	0.001	<20	0.18	0.020	0.10	<0.1	0.19	<0.1	<0.05	0.7	<0.5	<1	1.3
1240554	Rock	0.016	24	2	0.03	59	<0.001	<20	0.26	0.003	0.10	<0.1	0.02	<0.1	<0.05	0.6	<0.5	<1	0.3
1240555	Rock	0.037	53	13	1.06	76	0.009	<20	1.95	0.012	0.39	<0.1	<0.01	<0.1	0.14	1.8	<0.5	5	<0.2
1240556	Rock	0.035	17	10	0.25	56	0.018	<20	0.28	0.071	0.10	0.4	<0.01	<0.1	<0.05	2.8	<0.5	<1	<0.2
1240557	Rock	0.062	3	<1	1.17	46	0.016	<20	1.63	0.084	0.07	<0.1	0.01	<0.1	0.16	5.8	<0.5	5	<0.2
1219951	Rock	0.017	3	20	0.19	77	0.002	<20	0.29	0.007	0.03	<0.1	<0.01	<0.1	<0.05	1.2	0.7	1	<0.2



Acme Analytical Laboratories (Vancouver) Ltd.
 1020 Cordova St. East Vancouver BC V6A 4A3 Canada
 Phone (604) 253-3158 Fax (604) 253-1716

www.acmelab.com

Client: **Goldstrike Resources (Petro One Energy Co**
 1300 - 111 West Georgia Street
 Vancouver BC V6E 4M3 Canada

Project: LIV
 Report Date: November 10, 2011

Page: 3 of 3 Part 1

CERTIFICATE OF ANALYSIS

WHI11001738.1

Method	WGHT	3B	1DX	1DX	1DX	1DX	1DX	1DX	1DX	1DX	1DX	1DX	1DX	1DX	1DX	1DX	1DX	1DX	1DX	1DX	
Analyte	Wgt	Au	Mo	Cu	Pb	Zn	Ag	Ni	Co	Mn	Fe	As	Au	Th	Sr	Cd	Sb	Bi	V	Ca	
Unit	kg	ppb	ppm	ppm	ppm	ppm	ppm	ppm	ppm	ppm	%	ppm	ppb	ppm	ppm	ppm	ppm	ppm	ppm	%	
MDL	0.01	2	0.1	0.1	0.1	1	0.1	0.1	0.1	1	0.01	0.5	0.5	0.1	1	0.1	0.1	0.1	2	0.01	
1219952	Rock	1.31	<2	0.8	32.6	3.5	46	<0.1	13.3	7.5	375	3.73	0.6	1.0	2.5	97	0.1	<0.1	<0.1	49	1.10
1219953	Rock	0.87	<2	1.7	76.4	2.3	80	<0.1	19.0	15.2	740	4.43	3.1	0.9	2.6	57	<0.1	0.5	<0.1	51	1.01
1219954	Rock	1.06	<2	<0.1	65.6	4.3	90	<0.1	16.0	18.1	768	3.11	0.7	0.7	1.4	104	<0.1	0.2	<0.1	86	1.35
1219955	Rock	1.36	<2	3.7	53.8	2.0	80	0.1	34.3	12.7	281	3.38	<0.5	<0.5	3.9	41	0.3	<0.1	<0.1	73	0.81
1219956	Rock	1.01	<2	7.7	94.1	1.4	186	<0.1	30.2	1.5	39	0.75	<0.5	<0.5	2.4	15	2.1	0.5	<0.1	56	0.10
1219957	Rock	1.04	<2	1.6	39.9	1.7	162	<0.1	56.9	30.6	643	7.08	<0.5	<0.5	2.6	61	<0.1	<0.1	<0.1	129	0.92
1219958	Rock	0.93	3	7.3	97.4	3.0	34	0.2	11.4	3.6	206	3.28	<0.5	<0.5	1.5	77	<0.1	<0.1	0.2	64	0.41



Acme Analytical Laboratories (Vancouver) Ltd.
 1020 Cordova St. East Vancouver BC V6A 4A3 Canada
 Phone (604) 253-3158 Fax (604) 253-1716

www.acmelab.com

Client: **Goldstrike Resources (Petro One Energy Co**
 1300 - 111 West Georgia Street
 Vancouver BC V6E 4M3 Canada

Project: LIV
 Report Date: November 10, 2011

Page: 3 of 3 Part 2

CERTIFICATE OF ANALYSIS

WHI11001738.1

Method	1DX	1DX	1DX	1DX	1DX	1DX	1DX	1DX	1DX	1DX	1DX	1DX	1DX	1DX	1DX	1DX	1DX	1DX	1DX
Analyte	P	La	Cr	Mg	Ba	Ti	B	Al	Na	K	W	Hg	Tl	S	Sc	Se	Ga	Te	
Unit	%	ppm	ppm	%	ppm	%	ppm	%	%	%	ppm	ppm	ppm	%	ppm	ppm	ppm	ppm	
MDL	0.001	1	1	0.01	1	0.001	20	0.01	0.001	0.01	0.1	0.01	0.1	0.05	0.1	0.5	1	0.2	
1219952	Rock	0.180	22	29	0.83	1425	0.077	<20	1.79	0.102	0.42	<0.1	<0.01	<0.1	0.06	4.3	0.6	6	<0.2
1219953	Rock	0.271	21	22	1.39	118	0.049	<20	2.19	0.035	0.03	0.1	<0.01	<0.1	<0.05	3.6	<0.5	6	<0.2
1219954	Rock	0.125	6	25	1.60	279	0.156	<20	1.95	0.060	0.28	<0.1	<0.01	<0.1	<0.05	3.6	<0.5	7	<0.2
1219955	Rock	0.187	11	82	0.97	622	0.132	<20	1.82	0.069	0.20	<0.1	0.01	<0.1	0.38	3.0	3.3	5	<0.2
1219956	Rock	0.033	4	43	0.17	570	0.041	<20	0.29	0.011	0.09	0.3	0.12	<0.1	0.28	1.4	3.6	1	<0.2
1219957	Rock	0.264	16	95	2.50	1162	0.143	<20	4.10	0.028	2.61	0.2	0.01	0.3	0.34	2.4	<0.5	13	<0.2
1219958	Rock	0.066	7	92	0.83	236	0.269	<20	1.40	0.116	0.09	<0.1	0.02	<0.1	0.40	2.3	4.0	5	0.3



Acme Analytical Laboratories (Vancouver) Ltd.

1020 Cordova St. East Vancouver BC V6A 4A3 Canada
 Phone (604) 253-3158 Fax (604) 253-1716

www.acmelab.com

Client: **Goldstrike Resources (Petro One Energy Co**
 1300 - 111 West Georgia Street
 Vancouver BC V6E 4M3 Canada

Project: LIV

Report Date: November 10, 2011

Page: 1 of 2 Part 1

QUALITY CONTROL REPORT

WHI11001738.1

Method	WGHT	3B	1DX	1DX	1DX	1DX	1DX	1DX	1DX	1DX	1DX	1DX	1DX	1DX	1DX	1DX	1DX	1DX	1DX	1DX	1DX
Analyte	Wgt	Au	Mo	Cu	Pb	Zn	Ag	Ni	Co	Mn	Fe	As	Au	Th	Sr	Cd	Sb	Bi	V	Ca	
Unit	kg	ppb	ppm	ppm	ppm	ppm	ppm	ppm	ppm	ppm	%	ppm	ppb	ppm	ppm	ppm	ppm	ppm	ppm	ppm	
MDL	0.01	2	0.1	0.1	0.1	1	0.1	0.1	0.1	1	0.01	0.5	0.5	0.1	1	0.1	0.1	0.1	2	0.01	
Pulp Duplicates																					
1240501	Rock	0.95	7865	103.1	91.3	7828	15	>100	3.1	0.3	18	0.98	121.5	8226	0.2	50	0.4	19.3	1.5	11	0.02
REP 1240501	QC			101.9	88.3	7714	15	>100	3.1	0.3	20	0.96	121.5	8293	0.2	46	0.4	19.3	1.4	11	0.02
1240519	Rock	1.93	<2	13.7	26.3	4.5	7	<0.1	12.6	3.2	58	1.76	16.8	2.1	1.1	8	<0.1	1.1	<0.1	32	0.02
REP 1240519	QC		<2																		
Core Reject Duplicates																					
1240517	Rock	1.26	<2	3.2	27.6	3.2	5	<0.1	1.8	0.4	22	0.49	41.0	2.0	0.3	2	<0.1	1.1	<0.1	4	0.04
DUP 1240517	QC		<2	3.1	29.3	2.3	5	<0.1	2.0	0.4	19	0.50	41.6	1.7	0.3	3	<0.1	1.1	<0.1	4	0.04
Reference Materials																					
STD DS8	Standard			13.2	110.7	130.3	329	1.8	38.1	7.5	608	2.56	25.0	215.4	7.5	69	2.4	4.9	7.1	41	0.64
STD DS8	Standard			13.7	117.9	122.0	319	1.6	41.2	8.1	618	2.59	25.6	152.5	6.8	68	2.4	5.0	6.7	41	0.69
STD OREAS45CA	Standard			1.1	515.1	22.3	68	0.3	260.4	93.7	972	16.99	4.2	50.2	7.8	17	0.1	0.1	0.2	231	0.44
STD OREAS45CA	Standard			1.1	519.6	19.8	64	0.3	265.3	92.6	944	16.50	4.7	43.1	6.5	16	0.1	0.1	0.2	225	0.41
STD OXC88	Standard		185																		
STD OXC88	Standard		199																		
STD OXH82	Standard		1302																		
STD OXH82	Standard		1272																		
STD DS8 Expected			13.44	110	123	312	1.69	38.1	7.5	615	2.46	26	107	6.89	67.7	2.38	4.8	6.67	41.1	0.7	
STD OREAS45CA Expected			1	494	20	60	0.275	240	92	943	15.69	3.8	43	7	15	0.1	0.13	0.19	215	0.4265	
STD OXC88 Expected		203																			
STD OXH82 Expected		1278																			
BLK	Blank		<0.1	<0.1	<0.1	<1	<0.1	<0.1	<0.1	<1	<0.01	<0.5	<0.5	<0.1	<1	<0.1	<0.1	<0.1	<2	<0.01	
BLK	Blank		<0.1	<0.1	<0.1	<1	<0.1	<0.1	<0.1	<1	<0.01	<0.5	<0.5	<0.1	<1	<0.1	<0.1	<0.1	<2	<0.01	
BLK	Blank		<2																		
BLK	Blank		<2																		
BLK	Blank		<2																		
BLK	Blank		<2																		
Prep Wash																					
G1	Prep Blank		<2	0.1	3.0	3.2	49	<0.1	4.5	4.5	594	2.00	0.9	2.2	5.6	66	<0.1	0.2	<0.1	37	0.55

This report supersedes all previous preliminary and final reports with this file number dated prior to the date on this certificate. Signature indicates final approval; preliminary reports are unsigned and should be used for reference only.



Acme Analytical Laboratories (Vancouver) Ltd.

1020 Cordova St. East Vancouver BC V6A 4A3 Canada
 Phone (604) 253-3158 Fax (604) 253-1716

www.acmelab.com

Client: **Goldstrike Resources (Petro One Energy Co**
 1300 - 111 West Georgia Street
 Vancouver BC V6E 4M3 Canada

Project: LIV

Report Date: November 10, 2011

Page: 1 of 2 Part 2

QUALITY CONTROL REPORT

WHI11001738.1

Method		1DX	1DX	1DX	1DX	1DX	1DX	1DX	1DX	1DX	1DX	1DX	1DX	1DX	1DX	1DX	1DX	1DX		
Analyte		P	La	Cr	Mg	Ba	Ti	B	Al	Na	K	W	Hg	Tl	S	Sc	Se	Ga	Te	
Unit		%	ppm	ppm	%	ppm	%	ppm	%	%	%	ppm	ppm	ppm	%	ppm	ppm	ppm	ppm	
MDL		0.001	1	1	0.01	1	0.001	20	0.01	0.001	0.01	0.1	0.01	0.1	0.05	0.1	0.5	1	0.2	
Pulp Duplicates																				
1240501	Rock	0.121	3	3	<0.01	2419	<0.001	<20	0.12	0.003	0.02	<0.1	0.34	<0.1	0.19	0.4	39.6	<1	115.6	
REP 1240501	QC	0.116	2	3	<0.01	2055	<0.001	<20	0.12	0.002	0.02	<0.1	0.34	<0.1	0.18	0.4	39.4	<1	113.0	
1240519	Rock	0.034	8	31	0.25	28	0.002	<20	0.35	0.005	0.04	<0.1	<0.01	<0.1	0.09	1.8	1.8	2	<0.2	
REP 1240519	QC																			
Core Reject Duplicates																				
1240517	Rock	0.027	1	<1	<0.01	20	<0.001	<20	0.07	0.002	0.03	<0.1	<0.01	<0.1	<0.05	0.3	<0.5	<1	<0.2	
DUP 1240517	QC	0.028	1	3	<0.01	18	<0.001	<20	0.07	0.003	0.03	<0.1	<0.01	<0.1	<0.05	0.3	<0.5	<1	<0.2	
Reference Materials																				
STD DS8	Standard	0.079	16	117	0.62	314	0.116	<20	0.98	0.103	0.44	2.5	0.18	5.5	0.15	1.9	6.1	5	4.7	
STD DS8	Standard	0.076	16	121	0.63	291	0.129	<20	0.99	0.097	0.44	2.6	0.20	5.3	0.16	2.3	5.1	5	5.0	
STD OREAS45CA	Standard	0.042	17	707	0.16	177	0.135	<20	4.00	0.009	0.08	<0.1	0.03	<0.1	<0.05	40.1	1.0	20	<0.2	
STD OREAS45CA	Standard	0.036	17	699	0.16	161	0.153	<20	4.04	0.008	0.08	<0.1	0.03	<0.1	<0.05	42.0	0.8	19	<0.2	
STD OXC88	Standard																			
STD OXC88	Standard																			
STD OXH82	Standard																			
STD OXH82	Standard																			
STD DS8 Expected		0.08	14.6	115	0.6045	279	0.113	2.6	0.93	0.0883	0.41	3	0.192	5.4	0.1679	2.3	5.23	4.7	5	
STD OREAS45CA Expected		0.0385	15.9	709	0.1358	164	0.128		3.592	0.0075	0.0717		0.03	0.07	0.021	39.7	0.5	18.4		
STD OXC88 Expected																				
STD OXH82 Expected																				
BLK	Blank	<0.001	<1	<1	<0.01	<1	<0.001	<20	<0.01	<0.001	<0.01	<0.1	<0.01	<0.1	<0.05	<0.1	<0.5	<1	<0.2	
BLK	Blank	<0.001	<1	<1	<0.01	<1	<0.001	<20	<0.01	<0.001	<0.01	<0.1	<0.01	<0.1	<0.05	<0.1	<0.5	<1	<0.2	
BLK	Blank																			
BLK	Blank																			
BLK	Blank																			
BLK	Blank																			
Prep Wash																				
G1	Prep Blank	0.081	10	8	0.60	217	0.151	<20	1.14	0.106	0.52	<0.1	<0.01	0.3	<0.05	2.3	<0.5	5	<0.2	

This report supersedes all previous preliminary and final reports with this file number dated prior to the date on this certificate. Signature indicates final approval; preliminary reports are unsigned and should be used for reference only.



Acme Analytical Laboratories (Vancouver) Ltd.

1020 Cordova St. East Vancouver BC V6A 4A3 Canada

Phone (604) 253-3158 Fax (604) 253-1716

www.acmelab.com

Client: Goldstrike Resources (Petro One Energy Co)
 1300 - 111 West Georgia Street
 Vancouver BC V6E 4M3 Canada

Project: LIV

Report Date: November 10, 2011

Page: 2 of 2 **Part** 1

QUALITY CONTROL REPORT

WHI11001738.1

	WGHT	3B	1DX	1DX	1DX	1DX	1DX	1DX	1DX	1DX	1DX	1DX	1DX	1DX	1DX	1DX	1DX	1DX	1DX	1DX
	Wgt	Au	Mo	Cu	Pb	Zn	Ag	Ni	Co	Mn	Fe	As	Au	Th	Sr	Cd	Sb	Bi	V	Ca
	kg	ppb	ppm	ppm	ppm	ppm	ppm	ppm	ppm	ppm	%	ppm	ppb	ppm	ppm	ppm	ppm	ppm	ppm	%
G1	0.01	2	0.1	0.1	0.1	1	0.1	0.1	0.1	1	0.01	0.5	0.5	0.1	1	0.1	0.1	0.1	2	0.01
	Prep Blank	<2	0.1	3.1	3.2	51	<0.1	4.7	4.5	615	2.05	1.1	2.6	5.8	68	<0.1	0.2	<0.1	38	0.57



Acme Analytical Laboratories (Vancouver) Ltd.

1020 Cordova St. East Vancouver BC V6A 4A3 Canada

Phone (604) 253-3158 Fax (604) 253-1716

www.acmelab.com

Client: Goldstrike Resources (Petro One Energy Co)
1300 - 111 West Georgia Street
Vancouver BC V6E 4M3 Canada

Project: LIV

Report Date: November 10, 2011

Page: 2 of 2 **Part** 2

QUALITY CONTROL REPORT

WHI11001738.1

		1DX	1DX	1DX	1DX	1DX	1DX	1DX	1DX	1DX	1DX	1DX	1DX	1DX	1DX	1DX	1DX	1DX	
		P	La	Cr	Mg	Ba	Ti	B	Al	Na	K	W	Hg	Tl	S	Sc	Se	Ga	Te
		%	ppm	ppm	%	ppm	%	ppm	%	%	%	ppm	ppm	ppm	%	ppm	ppm	ppm	ppm
		0.001	1	1	0.01	1	0.001	20	0.01	0.001	0.01	0.1	0.01	0.1	0.05	0.1	0.5	1	0.2
G1	Prep Blank	0.078	10	8	0.61	215	0.158	<20	1.16	0.117	0.53	<0.1	<0.01	0.3	<0.05	2.5	<0.5	5	<0.2



1020 Cordova St. East Vancouver BC V6A 4A3 Canada

Acme Analytical Laboratories (Vancouver) Ltd.

www.acmelab.com

Client: Goldstrike Resources (Petro One Energy Corp)
1300 - 111 West Georgia Street
Vancouver BC V6E 4M3 Canada

Submitted By: Email Distribution List
Receiving Lab: Canada-Whitehorse
Received: August 24, 2011
Report Date: September 17, 2011
Page: 1 of 2

CERTIFICATE OF ANALYSIS

WHI11001285.1

CLIENT JOB INFORMATION

Project: LIV
Shipment ID: LIV-1
P.O. Number
Number of Samples: 1

SAMPLE DISPOSAL

RTRN-PLP Return
RTRN-RJT Return

Acme does not accept responsibility for samples left at the laboratory after 90 days without prior written instructions for sample storage or return.

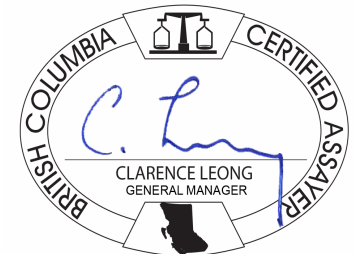
Invoice To: Goldstrike Resources (Petro One Energy Corp)
1300 - 111 West Georgia Street
Vancouver BC V6E 4M3
Canada

CC:

SAMPLE PREPARATION AND ANALYTICAL PROCEDURES

Table with 6 columns: Method Code, Number of Samples, Code Description, Test Wgt (g), Report Status, Lab. Rows include methods like Dry at 60C, SS80, RJSV, and 1DX2.

ADDITIONAL COMMENTS



This report supersedes all previous preliminary and final reports with this file number dated prior to the date on this certificate. Signature indicates final approval; preliminary reports are unsigned and should be used for reference only. All results are considered the confidential property of the client. Acme assumes the liabilities for actual cost of analysis only. Results apply to samples as submitted. ** asterisk indicates that an analytical result could not be provided due to unusually high levels of interference from other elements.



Acme Analytical Laboratories (Vancouver) Ltd.
 1020 Cordova St. East Vancouver BC V6A 4A3 Canada
 Phone (604) 253-3158 Fax (604) 253-1716

www.acmelab.com

Client: Goldstrike Resources (Petro One Energy Co)
 1300 - 111 West Georgia Street
 Vancouver BC V6E 4M3 Canada

Project: LIV
Report Date: September 17, 2011

Page: 2 of 2 Part 1

CERTIFICATE OF ANALYSIS

WHI11001285.1

Method	1DX15	1DX15	1DX15	1DX15	1DX15	1DX15	1DX15	1DX15	1DX15	1DX15	1DX15	1DX15	1DX15	1DX15	1DX15	1DX15	1DX15	1DX15	1DX15	1DX15	
Analyte	Mo	Cu	Pb	Zn	Ag	Ni	Co	Mn	Fe	As	Au	Th	Sr	Cd	Sb	Bi	V	Ca	P	La	
Unit	ppm	ppm	ppm	ppm	ppm	ppm	ppm	ppm	%	ppm	ppb	ppm	ppm	ppm	ppm	ppm	ppm	%	%	ppm	
MDL	0.1	0.1	0.1	1	0.1	0.1	0.1	1	0.01	0.5	0.5	0.1	1	0.1	0.1	0.1	2	0.01	0.001	1	
1233701	Soil	2.1	50.0	8.4	61	<0.1	48.4	15.7	419	3.04	101.5	2.3	1.7	16	0.1	2.5	0.2	57	0.23	0.089	12



Acme Analytical Laboratories (Vancouver) Ltd.
 1020 Cordova St. East Vancouver BC V6A 4A3 Canada
 Phone (604) 253-3158 Fax (604) 253-1716

www.acmelab.com

Client: Goldstrike Resources (Petro One Energy Co)
 1300 - 111 West Georgia Street
 Vancouver BC V6E 4M3 Canada

Project: LIV
Report Date: September 17, 2011

Page: 2 of 2 Part 2

CERTIFICATE OF ANALYSIS

WHI11001285.1

Method	1DX15	1DX15	1DX15	1DX15	1DX15	1DX15	1DX15	1DX15	1DX15	1DX15	1DX15	1DX15	1DX15	1DX15	1DX15	1DX15	
Analyte	Cr	Mg	Ba	Ti	B	Al	Na	K	W	Hg	Sc	Tl	S	Ga	Se	Te	
Unit	ppm	%	ppm	%	ppm	%	%	%	ppm	ppm	ppm	ppm	%	ppm	ppm	ppm	
MDL	1	0.01	1	0.001	1	0.01	0.001	0.01	0.1	0.01	0.1	0.1	0.05	1	0.5	0.2	
1233701	Soil	59	0.80	83	0.051	1	1.44	0.009	0.06	0.2	0.02	2.3	<0.1	0.07	5	0.8	<0.2



Acme Analytical Laboratories (Vancouver) Ltd.

1020 Cordova St. East Vancouver BC V6A 4A3 Canada

Phone (604) 253-3158 Fax (604) 253-1716

www.acmelab.com

Client: Goldstrike Resources (Petro One Energy Co)
1300 - 111 West Georgia Street
Vancouver BC V6E 4M3 Canada

Project: LIV

Report Date: September 17, 2011

Page: 1 of 1 **Part** 1

QUALITY CONTROL REPORT

WHI11001285.1

Method	1DX15	1DX15	1DX15	1DX15	1DX15	1DX15	1DX15	1DX15	1DX15	1DX15	1DX15	1DX15	1DX15	1DX15	1DX15	1DX15	1DX15	1DX15	1DX15	1DX15	
Analyte	Mo	Cu	Pb	Zn	Ag	Ni	Co	Mn	Fe	As	Au	Th	Sr	Cd	Sb	Bi	V	Ca	P	La	
Unit	ppm	ppm	ppm	ppm	ppm	ppm	ppm	ppm	%	ppm	ppb	ppm	ppm	ppm	ppm	ppm	ppm	%	%	ppm	
MDL	0.1	0.1	0.1	1	0.1	0.1	0.1	1	0.01	0.5	0.5	0.1	1	0.1	0.1	0.1	2	0.01	0.001	1	
Reference Materials																					
STD DS8	Standard	11.8	103.5	128.3	306	1.8	36.3	6.8	590	2.37	23.8	109.1	6.6	62	2.5	5.2	6.6	40	0.62	0.075	14
STD DS8 Expected		13.44	110	123	312	1.69	38.1	7.5	615	2.46	26	107	6.89	67.7	2.38	5.7	6.67	41.1	0.7	0.08	14.6
BLK	Blank	<0.1	<0.1	<0.1	<1	<0.1	<0.1	<0.1	<1	<0.01	<0.5	<0.5	<0.1	<1	<0.1	<0.1	<0.1	<2	<0.01	<0.001	<1



Acme Analytical Laboratories (Vancouver) Ltd.

1020 Cordova St. East Vancouver BC V6A 4A3 Canada

Phone (604) 253-3158 Fax (604) 253-1716

www.acmelab.com

Client: Goldstrike Resources (Petro One Energy Co)
1300 - 111 West Georgia Street
Vancouver BC V6E 4M3 Canada

Project: LIV

Report Date: September 17, 2011

Page: 1 of 1 Part 2

QUALITY CONTROL REPORT

WHI11001285.1

Method	1DX15	1DX15	1DX15	1DX15	1DX15	1DX15	1DX15	1DX15	1DX15	1DX15	1DX15	1DX15	1DX15	1DX15	1DX15	1DX15	1DX15
Analyte	Cr	Mg	Ba	Ti	B	Al	Na	K	W	Hg	Sc	Tl	S	Ga	Se	Te	
Unit	ppm	%	ppm	%	ppm	%	%	%	ppm	ppm	ppm	ppm	%	ppm	ppm	ppm	
MDL	1	0.01	1	0.001	1	0.01	0.001	0.01	0.1	0.01	0.1	0.1	0.05	1	0.5	0.2	
Reference Materials																	
STD DS8	Standard	112	0.56	264	0.102	2	0.84	0.077	0.39	3.1	0.22	1.7	5.4	0.11	4	5.0	5.0
STD DS8 Expected		115	0.6045	279	0.113	2.6	0.93	0.0883	0.41	3	0.192	2.3	5.4	0.1679	4.7	5.23	5
BLK	Blank	<1	<0.01	<1	<0.001	<1	<0.01	<0.001	<0.01	<0.1	<0.01	<0.1	<0.1	<0.05	<1	<0.5	<0.2