

ARCHER, CATHRO & ASSOCIATES (1981) LIMITED
1016 – 510 West Hastings Street
Vancouver, B.C. V6B 1L8

Telephone: 604-688-2568

Fax: 604-688-2578

ASSESSMENT REPORT

describing

GEOCHEMICAL SAMPLING AND PROSPECTING

at the

ANDY PROPERTY

Andy 1-48 YD113251-YD113298

NTS 105H/10

Latitude 61°39'N; Longitude 128°48'W

in the

Watson Lake Mining District
Yukon Territory

prepared by

Archer, Cathro & Associates (1981) Limited

for

WOLVERINE MINERALS CORP.

by

Crystal J. Chung, B.Sc. Geology, GIT

February 2012

CONTENTS

INTRODUCTION	1
PROPERTY LOCATION, CLAIM DATA AND ACCESS	1
HISTORY AND PREVIOUS WORK	1
GEOMORPHOLOGY	1
REGIONAL GEOLOGY	2
MINERALIZATION	3
SOIL GEOCHEMISTRY	3
DISCUSSION AND CONCLUSIONS	4
REFERENCES	5

APPENDICES

I	STATEMENT OF QUALIFICATIONS
II	ROCK SAMPLE DESCRIPTIONS
III	CERTIFICATES OF ANALYSIS

FIGURES

<u>No.</u>	<u>Description</u>	<u>Follows Page</u>
1	Property Location	1
2	Claim Locations	1
3	Tectonic Setting	2
4	Regional Geology	2
5	Sample Locations	3
6	Silver Geochemistry	3
7	Copper Geochemistry	3
8	Lead Geochemistry	3

TABLES

<u>No.</u>	<u>Description</u>	<u>Page</u>
I	Regional Lithological Units	2

INTRODUCTION

The Andy property was staked to cover the reported site of a visible gold-bearing vein. The property is wholly owned by Wolverine Minerals Corp.

The 2011 program at the Andy property included four days of geochemical sampling by Archer, Cathro & Associates (1981) Limited on behalf of Wolverine and six days of prospecting by two independent prospectors contracted by Wolverine. All work was completed between July 10 and 19, 2011. The author compiled and interpreted the 2011 data and her Statement of Qualifications appears in Appendix I.

PROPERTY LOCATION, CLAIM DATA AND ACCESS

The Andy property consists of 48 contiguous mineral claims, which are located on NTS map sheet 105H/10 at latitude 61°39' north and longitude 128°48' west (Figure 1). The property covers an area of 972 ha (9.72 sq. km). The claims are registered with the Watson Lake Mining Recorder in the name of Archer Cathro, which holds them in trust for Wolverine Minerals. Specifics concerning claim registration are tabulated below, while the locations of individual claims are shown on Figure 2.

<u>Claim Name</u>	<u>Grant Number</u>	<u>Expiry Date</u>
Andy 1-48	YD113251-YD113298	March 31, 2016*

* Expiry date includes 2011 work that has been filed for assessment credit but has not yet been accepted.

Access to the property was provided by a Hughes 500D helicopter operated by Kluane Airways Ltd. from the Inconnu Lodge, located approximately 75 km west-northwest of the property. The geochemical sampling crew stayed at the lodge while the two prospectors stayed in a fly camp on the property. The closest road access point is the Nahanni Range Road, which lies about 25 km to the east of the property.

HISTORY AND PREVIOUS WORK

The Andy property covers two Yukon Minfile occurrences (105H 038 and 105H 039), which were staked by Northwest Joint Venture in 1963 as the Nort and Goat claims. No data relating to work performed on these claims was published.

In 2010, Wolverine staked the Andy claims in an area where a specimen of visible gold-bearing quartz vein was reportedly collected by geologists in the 1970s (Dawson, personal communication, 2011).

GEOMORPHOLOGY

The terrain on the Andy property consists of rugged talus-covered slopes. Elevations range from 960 to 1980 m above sea level (asl). Most of the property lies above treeline and is intermittently covered by moss or grass. Outcrop is abundant on the property.

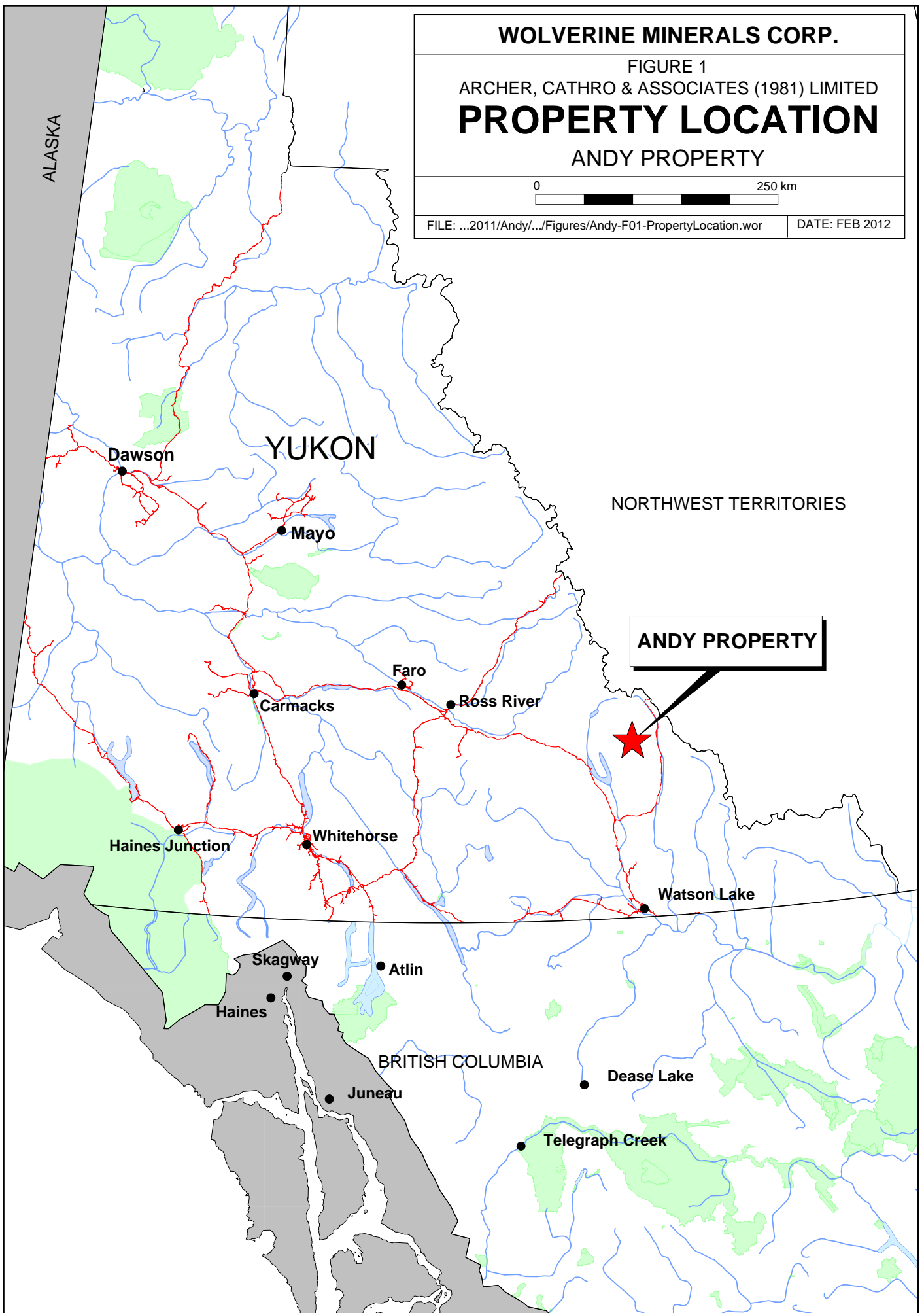
WOLVERINE MINERALS CORP.

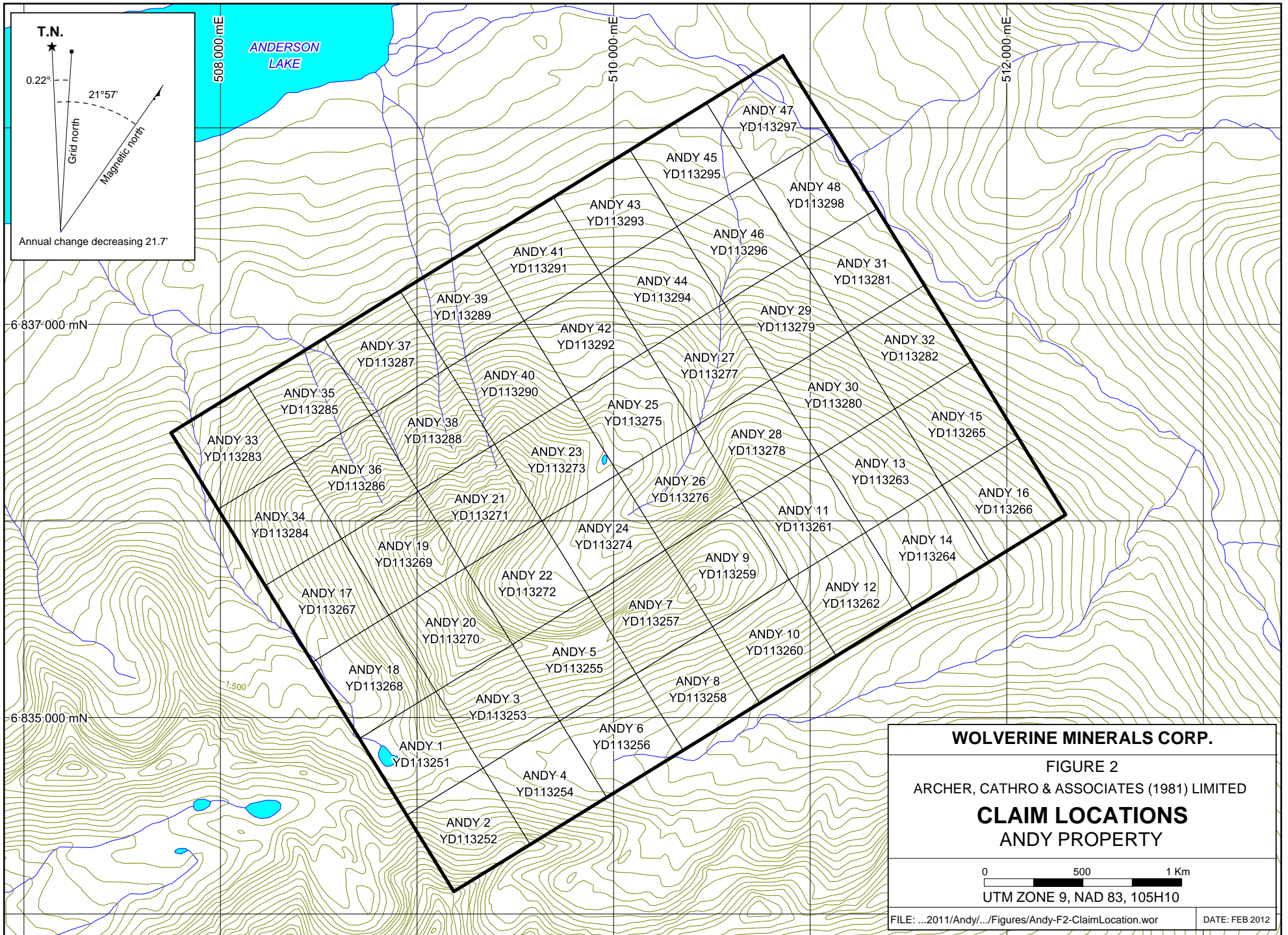
FIGURE 1
ARCHER, CATHRO & ASSOCIATES (1981) LIMITED
PROPERTY LOCATION
ANDY PROPERTY

0 250 km

FILE: ...2011/Andy/.../Figures/Andy-F01-PropertyLocation.wor

DATE: FEB 2012





T.N.

0.22°

21°57'

Grid north

Magnetic north

Annual change decreasing 21.7'

508 000 mE

510 000 mE

512 000 mE

6 837 000 mN

6 835 000 mN

1:500

WOLVERINE MINERALS CORP.

FIGURE 2

ARCHER, CATHRO & ASSOCIATES (1981) LIMITED

CLAIM LOCATIONS

ANDY PROPERTY

0 500 1 Km

UTM ZONE 9, NAD 83, 105H10

FILE: ...2011/Andy/.../Figures/Andy-F2-ClaimLocation.wor

DATE: FEB 2012

The northern half of the property is drained by a series of north-flowing creeks, while the southern half of the property is drained by an east-flowing creek. All of these creeks flow into Anderson Lake, which is part of the Mackenzie River Watershed.

REGIONAL GEOLOGY

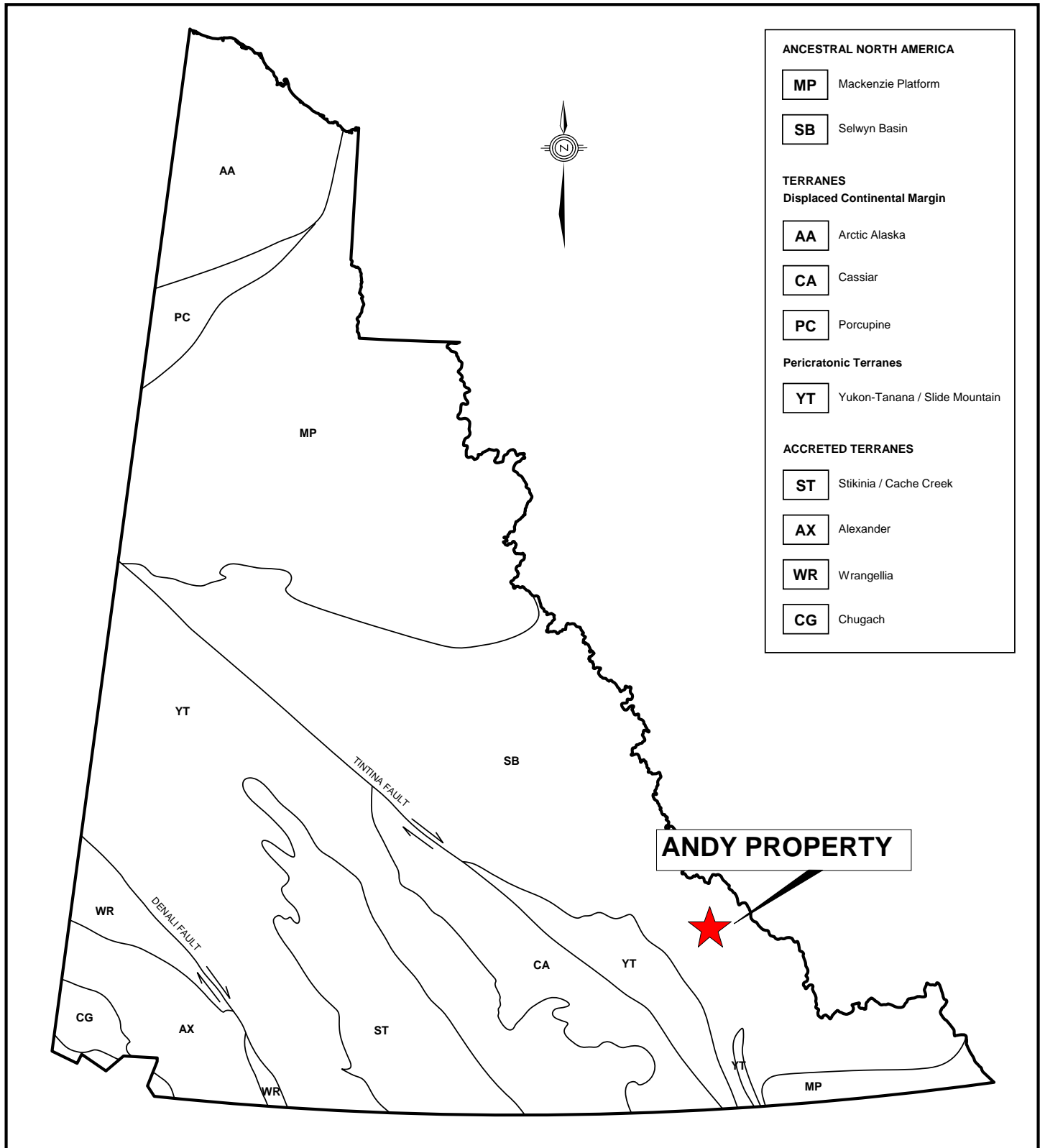
In 1966, the Geological Survey of Canada published a geological map of the Frances Lake area at 1 inch to 4 mile scale (Roots et al., 1966). In 2003, Gordey and Makepeace completed a Yukon-wide geological compilation.

The Andy property is located within Selwyn Basin as shown on Figure 3. Regional geology as compiled by Gordey and Makepeace (2003) is illustrated in Figure 4. The main lithologies in area are briefly described in Table I.

Table I - Regional Lithological Units (after Gordey and Makepeace, 2003)

Unit Name	Age	Map Name	Description
Selwyn Suite	Mid-Cretaceous	mKgS	Plutonic suite of intermediate to felsic composition and rarely syenitic; equivalent felsic dykes; complete compositional gradation so that designations are somewhat arbitrary. Resistant, blocky, fine to coarse grained equigranular to porphyritic (K-feldspar) biotite-quartz monzonite and granodiorite and minor quartz diorite; minor leuco-quartz monzonite and syenite.
Earn Group	Devonian and Mississippian	DME	Complex assemblage of submarine fan and channel deposits within black siliceous shale and chert, and including separated small occurrences of felsic volcanic rocks; barite common, and many occurrences of stratiform lead-zinc. Thin bedded, laminated slate with thin to thickly interbedded fine to medium grained chert-quartz arenite and wacke; thick members of chert pebble conglomerate; black siliceous siltstone; nodular and bedded barite; rare limestone.
Hyland Group	Upper Proterozoic to Lower Cambrian	PCH4	Consists upwards of coarse turbiditic clastics, limestone and fine clastics typified by maroon and green shale; includes scattered mafic volcanic rocks. Mostly thin to thick bedded, brown to pale green shale, fine to coarse grained quartz-rich sandstone, grit, and quartz-pebble conglomerate; minor argillaceous limestone; phyllite, quartzofeldspathic and micaceous psammite, gritty psammite and minor marble.

No detailed mapping was done in 2011 and therefore all geological observations are based on the Gordey and Makepeace (2003) compilation. The region is underlain by Hyland Group



- ANCESTRAL NORTH AMERICA**
- MP** Mackenzie Platform
 - SB** Selwyn Basin
- TERRANES**
- Displaced Continental Margin**
- AA** Arctic Alaska
 - CA** Cassiar
 - PC** Porcupine
- Pericratonic Terranes**
- YT** Yukon-Tanana / Slide Mountain
- ACCRETED TERRANES**
- ST** Stikinia / Cache Creek
 - AX** Alexander
 - WR** Wrangellia
 - CG** Chugach



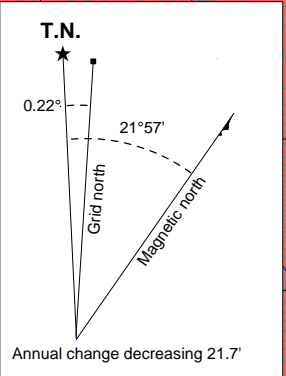
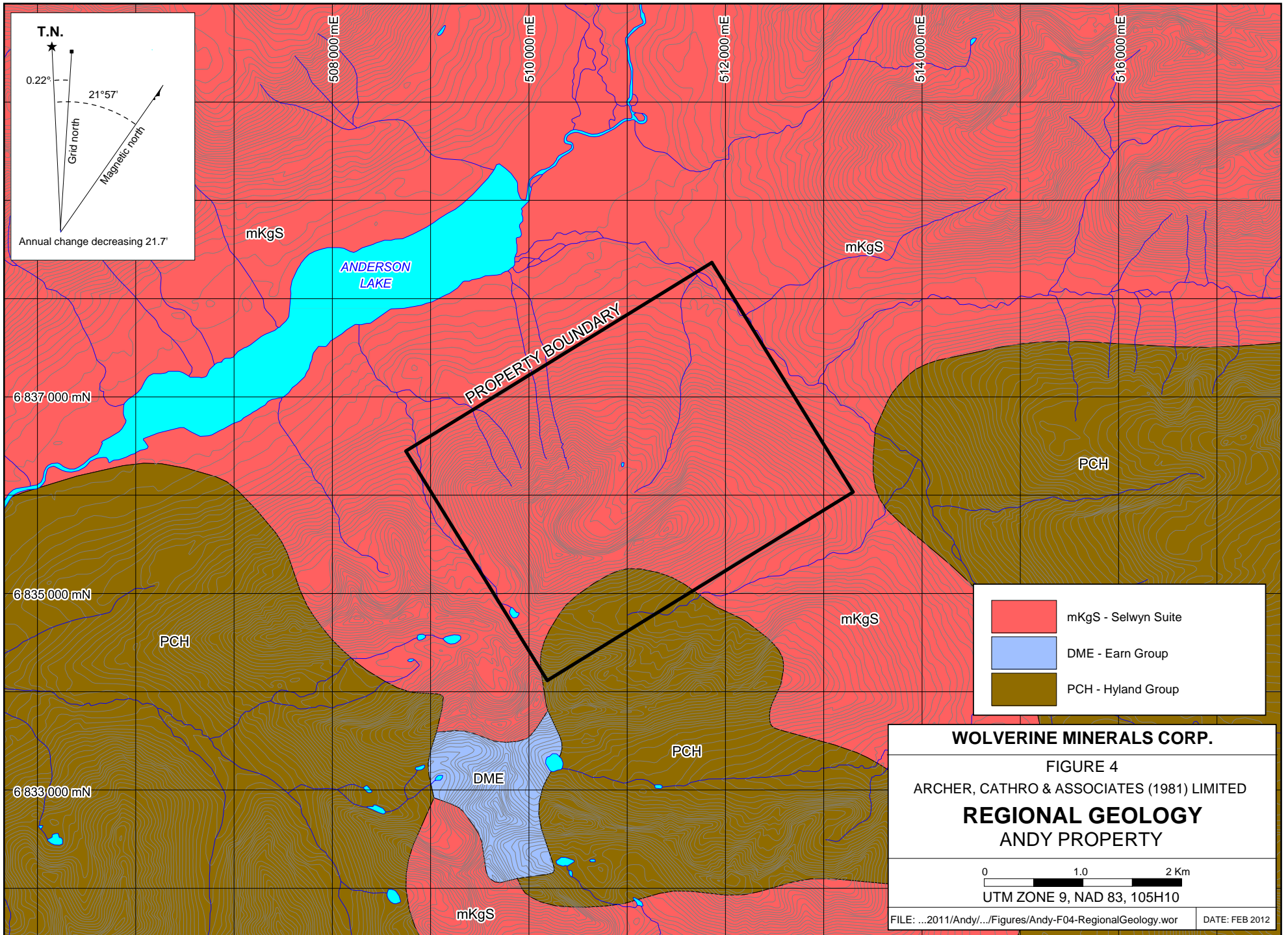
WOLVERINE MINERALS CORP.


FIGURE 3
 ARCHER, CATHRO & ASSOCIATES (1981) LIMITED
TECTONIC SETTING
 ANDY PROPERTY

0 200 km

UTM ZONE 9, NAD 83, 105H10

FILE: ...2011\Andy\...Figures\Andy-F03-Tectonic.wor DATE: FEB 2012



	mKgS - Selwyn Suite
	DME - Earn Group
	PCH - Hyland Group

WOLVERINE MINERALS CORP.

FIGURE 4

ARCHER, CATHRO & ASSOCIATES (1981) LIMITED

REGIONAL GEOLOGY

ANDY PROPERTY

0 1.0 2 Km

UTM ZONE 9, NAD 83, 105H10

FILE: ...2011/Andy/.../Figures/Andy-F04-RegionalGeology.wor DATE: FEB 2012

sedimentary and volcanic rocks that are unconformably overlain by Earn Group. Both stratified units have been intruded by a large Selwyn Suite plutonic body.

Hyland Group rocks outcrop in the southeast corner of the Andy property while Selwyn Suite intrusive rocks underlie the remainder of the property.

MINERALIZATION

In 2011, Wolverine collected 32 rock samples from the Andy property. Sample locations and results for silver, copper and lead are plotted on Figures 5 to 8, respectively. Rock sample descriptions are given in Appendix II while Certificates of Analysis are provided in Appendix III.

Rock sample sites on the property were marked with orange flagging tape labeled with the sample number. The location of each sample was determined using a handheld GPS unit. Multi-element analyses for rock samples were carried out at ALS Chemex in Whitehorse, Yukon. Each sample was dried, fine crushed to better than 70% passing 2 mm and a 250 g split was pulverized to better than 85% passing 75 microns. The fine fraction was analyzed for 51 elements using an aqua regia digestion followed by inductively coupled plasma combined with mass spectroscopy and atomic emission spectroscopy (ME-MS41). An additional 25 g charge was further analyzed for gold by aqua regia digestion with inductively coupled plasma mass spectroscopy finish (Au-TL44).

Rock samples were collected from a cirque located near the center of the property and from steep north-facing slopes in the northern part of the property.

Two primary rock types were samples in 2011 – quartz vein and skarn. Both quartz vein and skarn specimens typically host weakly to moderately disseminated pyrite, galena and sphalerite.

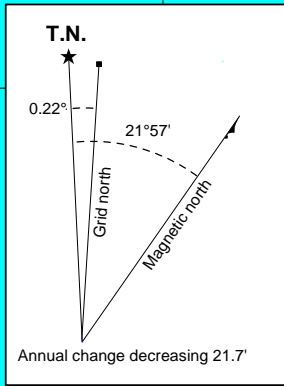
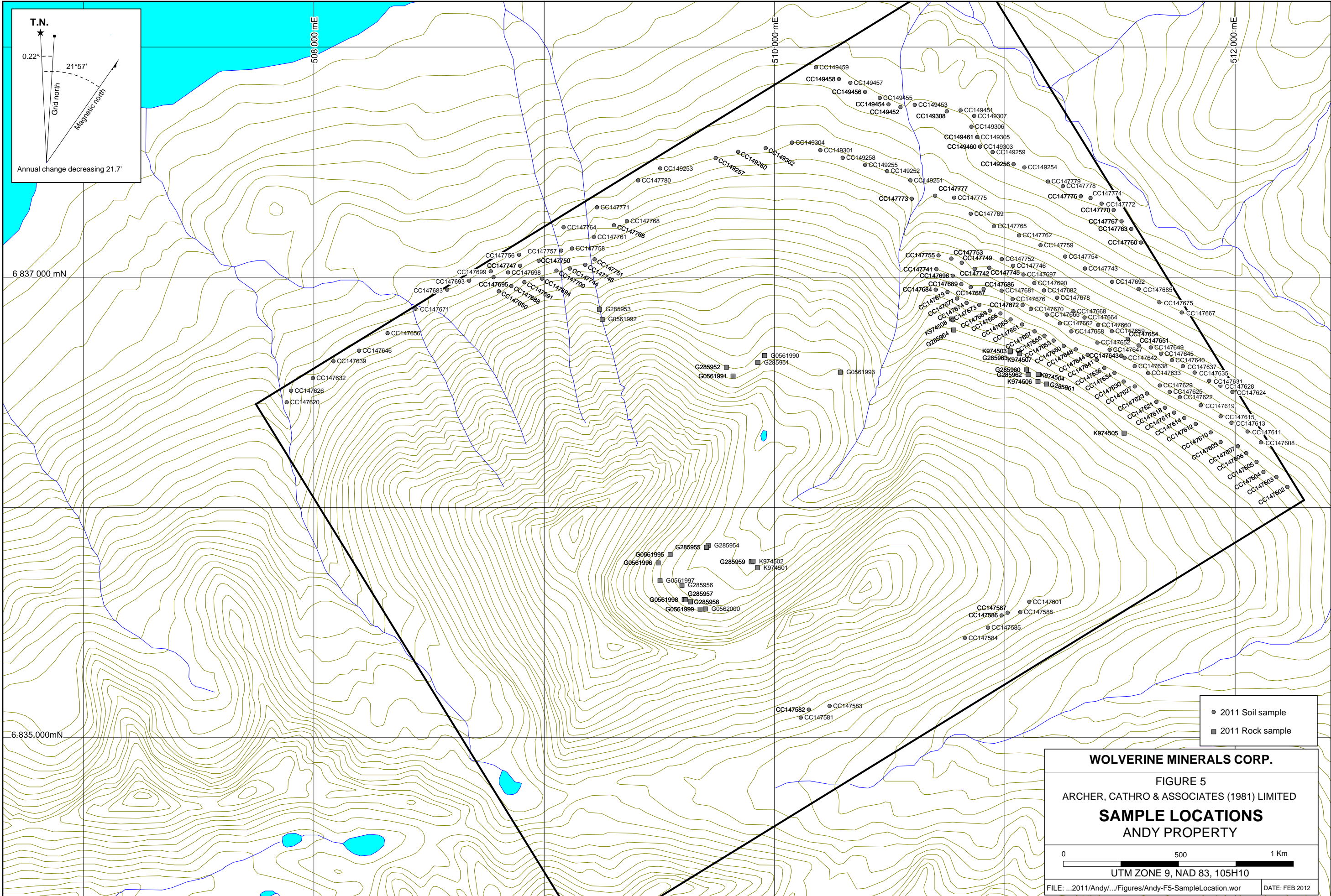
All rock samples yielded background values for gold (up to 61 ppb). Numerous moderately to strongly anomalous values were returned for silver (up to 86.4 ppm), copper (up to 1795 ppm) and lead (up to 27.9%). The samples hosting anomalous amounts of silver, copper and lead sourced from the head of the cirque near the center of the property.

SOIL GEOCHEMISTRY

In 2011, Wolverine collected 190 soil samples along five contour lines across the property. Sample locations and results for silver, copper and lead are plotted on Figures 5 to 8, respectively. Certificates of Analysis are given in Appendix III.

Soil samples were collected from 10 to 40 cm deep holes dug by hand-held soil augers. All samples were placed into individually pre-numbered Kraft paper bags. Sample sites are marked by aluminum tags inscribed with the sample numbers and affixed to 0.5 m wooden lath that were driven into the ground. All sample locations were recorded using hand-held GPS units.

The samples were sent to ALS Chemex in Whitehorse, Yukon where they were dried and screened to -180 microns before being analyzed for 51 elements using an aqua regia digestion



- 2011 Soil sample
- 2011 Rock sample

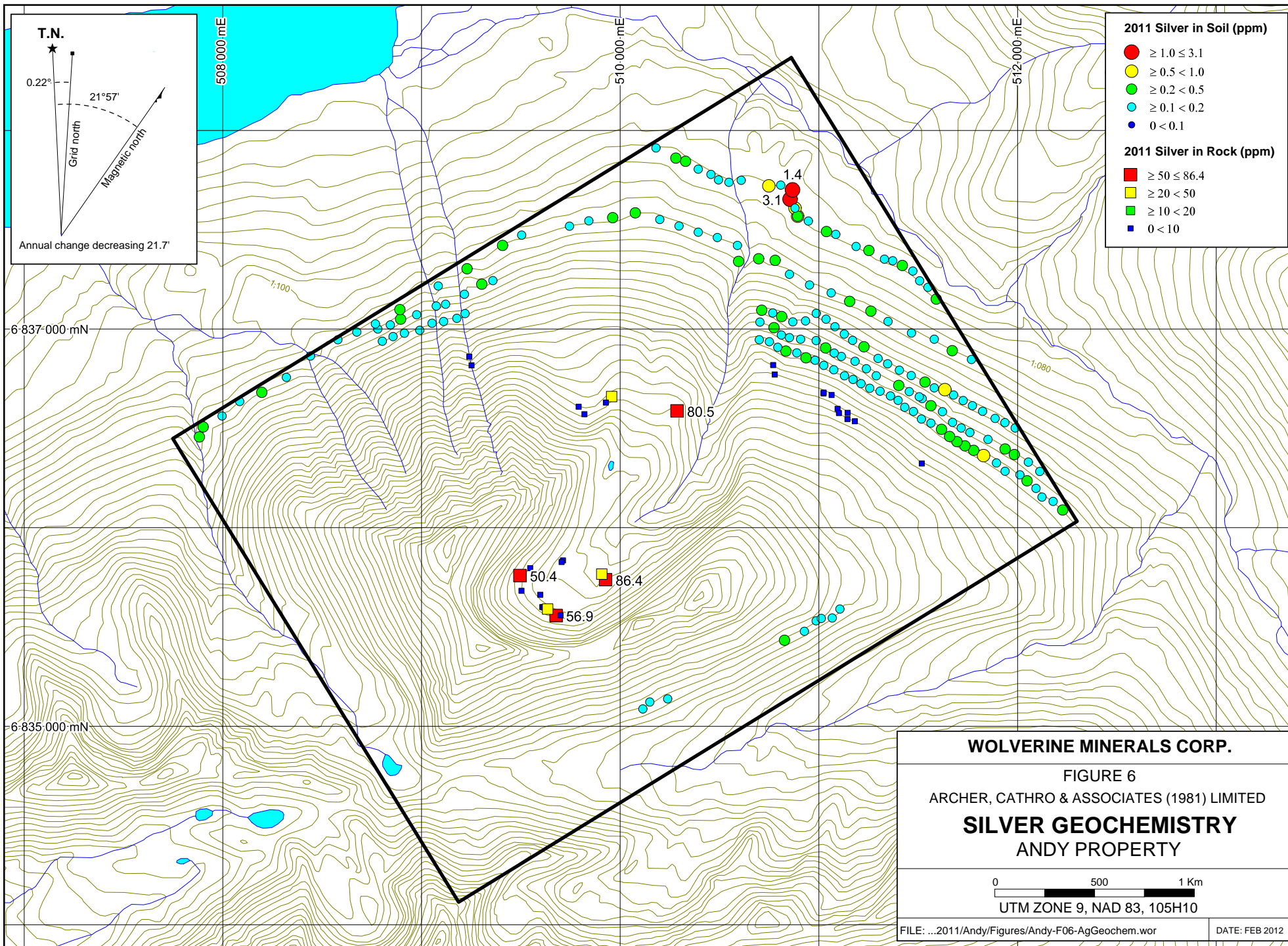
WOLVERINE MINERALS CORP.

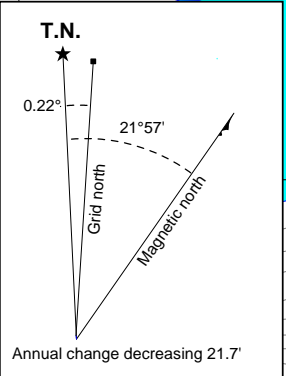
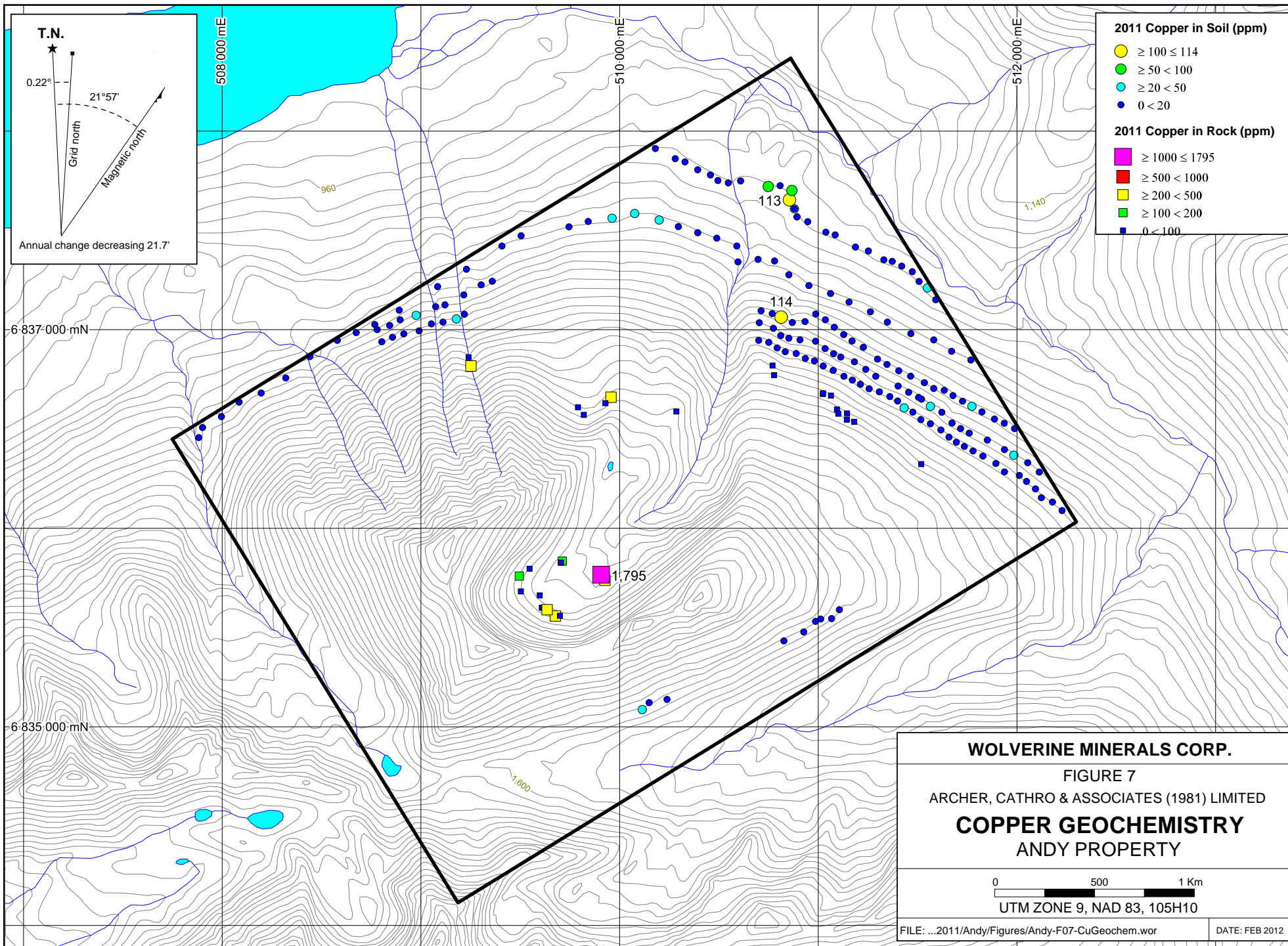
FIGURE 5
 ARCHER, CATHRO & ASSOCIATES (1981) LIMITED
SAMPLE LOCATIONS
 ANDY PROPERTY

0 500 1 Km

UTM ZONE 9, NAD 83, 105H10

FILE: ...2011/Andy/...Figures/Andy-F5-SampleLocation.wor DATE: FEB 2012





- 2011 Copper in Soil (ppm)**
- $\geq 100 \leq 114$
 - $\geq 50 < 100$
 - $\geq 20 < 50$
 - $0 < 20$
- 2011 Copper in Rock (ppm)**
- $\geq 1000 \leq 1795$
 - $\geq 500 < 1000$
 - $\geq 200 < 500$
 - $\geq 100 < 200$
 - $0 < 100$

WOLVERINE MINERALS CORP.

FIGURE 7

ARCHER, CATHRO & ASSOCIATES (1981) LIMITED

COPPER GEOCHEMISTRY

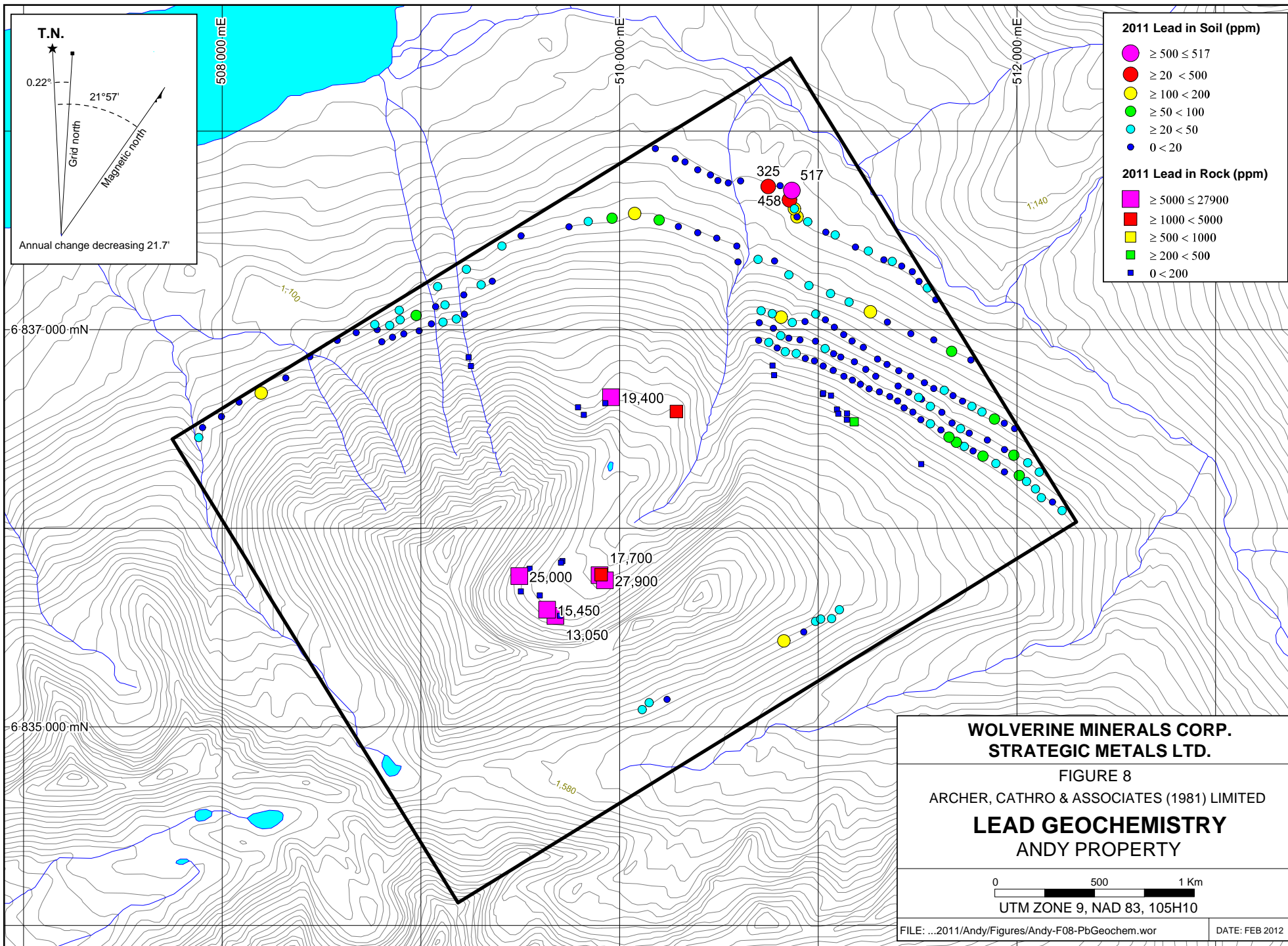
ANDY PROPERTY

0 500 1 Km

UTM ZONE 9, NAD 83, 105H10

FILE: ...2011/Andy/Figures/Andy-F07-CuGeochem.wor

DATE: FEB 2012



followed by inductively coupled plasma combined with mass spectroscopy and atomic emission spectroscopy (ME-MS41). An additional 25 g charge was further analysed for gold by aqua regia digestion with inductively coupled plasma mass spectroscopy finish (Au-TL43).

All soil samples returned background values for gold and background to strongly anomalous values for silver (up to 3.1 ppm), copper (up to 114 ppm) and lead (up to 517 ppm). The best sample yielded 3.1 ppm silver, 113 ppm copper and 458 ppm lead, but no significant gold.

A cluster of strongly anomalous soil values lies on a gentle north-facing slope near the mouth of a creek draining the cirque in the center of the property.

DISCUSSION AND CONCLUSIONS

Although the 2011 exploration program was not able to reproduce the claim of a visible gold-bearing quartz vein on the property, the program was successful in identifying new targets that warrant follow-up work.

Follow-up work should include a one day property visit by three prospectors and/or geologists who should attempt to trace the mineralized float to its bedrock source. If mineralized bedrock is discovered, it should be chip sampled, and controls on mineralization should be determined. Additional contour soil sampling is warranted and should be done from a temporary fly camp on the property, after results of prospecting are known.

Respectfully submitted,

ARCHER, CATHRO & ASSOCIATES (1981) LIMITED

Crystal J. Chung, B.Sc. Geology, GIT

REFERENCES

- Dawson, J.M
2011 Personal communication
- Gordey, S.P. and Makepeace, A.J. (compilers)
2003 Yukon digital geology, version 2.0, Geological Survey of Canada, Open file 1749
and Yukon Geological Survey, Open File 2003-9 (D)
- Roots, E.F., Green, L.H., Roddick, J.A., Blusson, S.L.
1966 Geology, Frances Lake, Yukon Territory and District of Mackenzie, Geological
Survey of Canada, Preliminary Map 6-1966

APPENDIX I
STATEMENT OF QUALIFICATIONS

STATEMENT OF QUALIFICATIONS

I, Crystal J Chung, geologist, with business addresses in Vancouver, British Columbia and Whitehorse, Yukon Territory and residential address in Burnaby, British Columbia do hereby certify that:

1. I graduated from the University of British Columbia in 2005 with a B.Sc. majoring in Earth and Ocean Sciences (Geology).
2. From 2004 to present, I have been actively engaged in mineral exploration in British Columbia, Alaska and the Yukon Territory.
3. I am a Geoscientist in Training (GIT) with the Association of Professional Engineers and Geoscientists of British Columbia (Member Number 138321).
4. I have personally reviewed and interpreted all data resulting from this work.

Crystal J. Chung, B.Sc. Geology, GIT

APPENDIX II
ROCK SAMPLE DESCRIPTIONS

Rock Sample DescriptionsProject: FinlaysonProperty: Andy

Sample Number: G0561990 Grid East: 509957 E Grid North: 6836660 N Type: proximal float Dimension:
UTM: 509957 E UTM: 6836660 N Sample Width: Abundance:
Elevation: m

Comments: talus float; rusty leached diorite(?) w/galena, sphalerite and orange limonite; from rusty east-west 'shear' above

Sample Number: G0561991 Grid East: 509820 E Grid North: 6836571 N Type: proximal float Dimension:
UTM: 509820 E UTM: 6836571 N Sample Width: Abundance:
Elevation: m

Comments: rusty 1 cm qtz veinlets w/pyrite; slickensides (greissen??)

Sample Number: G0561992 Grid East: 509252 E Grid North: 6836817 N Type: float grab Dimension:
UTM: 509252 E UTM: 6836817 N Sample Width: Abundance:
Elevation: m

Comments: small pieces rusty qtz float (very rare) in steep drainage

Sample Number: G0561993 Grid East: 510286 E Grid North: 6836588 N Type: float grab Dimension:
UTM: 510286 E UTM: 6836588 N Sample Width: Abundance:
Elevation: m

Comments: rusty, angular large boulder skarn minerals w/galena and sphalerite - could be local or from cirque ???

Sample Number: G0561995 Grid East: 509547 E Grid North: 6835796 N Type: proximal float Dimension:
UTM: 509547 E UTM: 6835796 N Sample Width: Abundance:
Elevation: m

Comments: skarn rock from above; pyrite, sphalerite and +/- galena, red garnet

Sample Number: G0561996 Grid East: 509495 E Grid North: 6835759 N Type: proximal float Dimension:
UTM: 509495 E UTM: 6835759 N Sample Width: Abundance:
Elevation: m

Comments: skarn float from about 50 m north west; sphalerite, galena and pyrite; limestone rocks in talus

Rock Sample DescriptionsProject: FinlaysonProperty: Andy

Sample Number: G0561997 Grid East: 509503 E Grid North: 6835682 N Type: talus float grab Dimension:
UTM: 509503 E UTM: 6835682 N Sample Width: Abundance:
Elevation: m

Comments: angular talus float; pyrite, sphalerite, galena; banded rock and mineralization

Sample Number: G0561998 Grid East: 509608 E Grid North: 6835600 N Type: proximal float Dimension:
UTM: 509608 E UTM: 6835600 N Sample Width: Abundance:
Elevation: m

Comments: large angular talus from about 100 m west; pyrite and +/- sphalerite

Sample Number: G0561999 Grid East: 509677 E Grid North: 6835558 N Type: proximal float Dimension:
UTM: 509677 E UTM: 6835558 N Sample Width: Abundance:
Elevation: m

Comments: small angular talus float from rusty o/c 25 m north east; sphalerite, galena and quartz

Sample Number: G0562000 Grid East: 509700 E Grid North: 6835559 N Type: talus float grab Dimension:
UTM: 509700 E UTM: 6835559 N Sample Width: Abundance:
Elevation: m

Comments: small rusty orange quartz w/pyrite

Sample Number: G285951 Grid East: 509928 E Grid North: 6836630 N Type: talus float grab Dimension:
UTM: 509928 E UTM: 6836630 N Sample Width: Abundance:
Elevation: m

Comments: small qtz float; minor chlorite

Sample Number: G285952 Grid East: 509791 E Grid North: 6836609 N Type: proximal float Dimension:
UTM: 509791 E UTM: 6836609 N Sample Width: Abundance:
Elevation: m

Comments: dirty' qtz from rusty shear (?) above

Rock Sample DescriptionsProject: FinlaysonProperty: Andy

Sample Number: G285953 Grid East: 509240 E Grid North: 6836861 N Type: proximal float Dimension:
UTM: 509240 E UTM: 6836861 N Sample Width: Abundance:
Elevation: m

Comments: rusty qtz; weathered pyrite; rusty granitic (dirorite?) host

Sample Number: G285954 Grid East: 509712 E Grid North: 6835835 N Type: talus float grab Dimension:
UTM: 509712 E UTM: 6835835 N Sample Width: Abundance:
Elevation: m

Comments: large crumbly boulders; qtz w/pyrite

Sample Number: G285955 Grid East: 509705 E Grid North: 6835827 N Type: talus float grab Dimension:
UTM: 509705 E UTM: 6835827 N Sample Width: Abundance:
Elevation: m

Comments: large rusty crumbly boulder w/sphalerite, pyrite

Sample Number: G285956 Grid East: 509598 E Grid North: 6835662 N Type: talus float grab Dimension:
UTM: 509598 E UTM: 6835662 N Sample Width: Abundance:
Elevation: m

Comments: rusty qtz float w/galena, sphalerite and semi massive py in vugs

Sample Number: G285957 Grid East: 509614 E Grid North: 6835599 N Type: talus float grab Dimension:
UTM: 509614 E UTM: 6835599 N Sample Width: Abundance:
Elevation: m

Comments: similar float to last; pyrite, sphalerite (no galena seen)

Sample Number: G285958 Grid East: 509635 E Grid North: 6835590 N Type: talus float grab Dimension:
UTM: 509635 E UTM: 6835590 N Sample Width: Abundance:
Elevation: m

Comments: skarn boulder w/galena, sphalerite and pyrite

Rock Sample DescriptionsProject: FinlaysonProperty: Andy

Sample Number: G285959 Grid East: 509899 E Grid North: 6835764 N Type: talus float grab Dimension:
UTM: 509899 E UTM: 6835764 N Sample Width: Abundance:
Elevation: m

Comments: large boulder of massive mineralization - galena, pyrite, sphalerite and hydrozincite

Sample Number: G285960 Grid East: 511094 E Grid North: 6836598 N Type: subcrop grab Dimension:
UTM: 511094 E UTM: 6836598 N Sample Width: Abundance:
Elevation: m

Comments: qtz with much pyrite; other similar veins in rusty granite; possible shears

Sample Number: G285961 Grid East: 511181 E Grid North: 6836536 N Type: o/c grab Dimension:
UTM: 511181 E UTM: 6836536 N Sample Width: Abundance:
Elevation: m

Comments: 60 cm thick qtz vein; pyrite and leached pyrite open spaces

Sample Number: G285962 Grid East: 511101 E Grid North: 6836577 N Type: proximal float Dimension:
UTM: 511101 E UTM: 6836577 N Sample Width: Abundance:
Elevation: m

Comments: larges lab of rusty acid leached pyrite; pyrite and possible specular hematite

Sample Number: G285963 Grid East: 511023 E Grid North: 6836676 N Type: o/c grab Dimension:
UTM: 511023 E UTM: 6836676 N Sample Width: Abundance:
Elevation: m

Comments: 25 cm wide qtz vein w/pyrite; strike about 214 and near vertical dip

Sample Number: G285964 Grid East: 510778 E Grid North: 6836771 N Type: subcrop grab Dimension:
UTM: 510778 E UTM: 6836771 N Sample Width: Abundance:
Elevation: m

Comments: rusty qtz vein material; acid leached and with pyrite

Rock Sample DescriptionsProject: FinlaysonProperty: Andy

Sample Number: K974501 Grid East: 509926 E Grid North: 6835738 N Type: talus float grab Dimension:
UTM: 509926 E UTM: 6835738 N Sample Width: Abundance:
Elevation: m

Comments: large and many boulders of massive sulphides (sphalerite, galena, pyrite +/- quartz); seem to source south side cirque.

Sample Number: K974502 Grid East: 509907 E Grid North: 6835766 N Type: talus float grab Dimension:
UTM: 509907 E UTM: 6835766 N Sample Width: Abundance:
Elevation: m

Comments: same as above

Sample Number: K974503 Grid East: 511024 E Grid North: 6836680 N Type: o/c grab Dimension:
UTM: 511024 E UTM: 6836680 N Sample Width: Abundance:
Elevation: m

Comments: pyritic qtz in rusty granitic rocks; hematite; next to aplite dyke (?); poor exposure but appears to be about 75 cm wide

Sample Number: K974504 Grid East: 511145 E Grid North: 6836578 N Type: subcrop grab Dimension:
UTM: 511145 E UTM: 6836578 N Sample Width: Abundance:
Elevation: m

Comments: talus; rusty qtz w/pyrite; acid leached open spaces

Sample Number: K974505 Grid East: 511518 E Grid North: 6836323 N Type: talus float grab Dimension:
UTM: 511518 E UTM: 6836323 N Sample Width: Abundance:
Elevation: m

Comments: angular rusty qtz w/pyrite and acid leached open spaces; white and bluish qtz

Sample Number: K974506 Grid East: 511144 E Grid North: 6836547 N Type: subcrop grab Dimension:
UTM: 511144 E UTM: 6836547 N Sample Width: Abundance:
Elevation: m

Comments: pyritic white qtz w/acid leached open spaces; definite zone of this type of qtz veining in the granitic rocks

Rock Sample DescriptionsProject: FinlaysonProperty: Andy

Sample Number: Grid East: E Grid North: N Type: subcrop grab Dimension:
K974507 UTM: 511064 E UTM: 6836668 N Sample Width: Abundance:
 Elevation: m

Comments: rusty qtz w/pyrite and leached open spaces in granitic rock

Sample Number: Grid East: E Grid North: N Type: subcrop grab Dimension:
K974508 UTM: 510770 E UTM: 6836819 N Sample Width: Abundance:
 Elevation: m

Comments: rusty qtz w/pyrite and leached open spaces in granitic rock

APPENDIX III
CERTIFICATES OF ANALYSIS



ALS Canada Ltd.
 2103 Dollarton Hwy
 North Vancouver BC V7H 0A7
 Phone: 604 984 0221 Fax: 604 984 0218 www.alsglobal.com

To: **ARCHER, CATHRO AND ASSOCIATES (1981) LIMITED**
1016- 510 W HASTINGS ST
VANCOUVER BC V6B 1L8

Page: 1
Finalized Date: 26- AUG- 2011
Account: F

CERTIFICATE WH11138806

Project: Andy/Has/Gam
 P.O. No.: Batch 1
 This report is for 36 Rock samples submitted to our lab in Whitehorse, YT, Canada on 20-JUL-2011.
 The following have access to data associated with this certificate:

DOUG EATON	SARAH EATON	JOAN MARIACHER
------------	-------------	----------------

SAMPLE PREPARATION	
ALS CODE	DESCRIPTION
WEI- 21	Received Sample Weight
LOG- 22	Sample login - Rcd w/o BarCode
CRU- 31	Fine crushing - 70% <2mm
CRU- QC	Crushing QC Test
PUL- QC	Pulverizing QC Test
SPL- 21	Split sample - riffle splitter
PUL- 31	Pulverize split to 85% <75 um
LOG- 24	Pulp Login - Rcd w/o Barcode

ANALYTICAL PROCEDURES		
ALS CODE	DESCRIPTION	
ME- MS41	51 anal. aqua regia ICPMS	
ME- OG46	Ore Grade Elements - AquaRegia	ICP- AES
Pb- OG46	Ore Grade Pb - Aqua Regia	VARIABLE
Zn- OG46	Ore Grade Zn - Aqua Regia	VARIABLE
Au- AA24	Au 50g FA AA finish	AAS

To: **ARCHER, CATHRO AND ASSOCIATES (1981) LIMITED**
ATTN: JOAN MARIACHER
1016- 510 W HASTINGS ST
VANCOUVER BC V6B 1L8

This is the Final Report and supersedes any preliminary report with this certificate number. Results apply to samples as submitted. All pages of this report have been checked and approved for release.

Signature: 
 Colin Ramshaw, Vancouver Laboratory Manager



ALS Canada Ltd.
 2103 Dollarton Hwy
 North Vancouver BC V7H 0A7
 Phone: 604 984 0221 Fax: 604 984 0218 www.alsglobal.com

To: ARCHER, CATHRO AND ASSOCIATES (1981)
 LIMITED
 1016- 510 W HASTINGS ST
 VANCOUVER BC V6B 1L8

Page: 2 - A
 Total # Pages: 2 (A - D)
 Plus Appendix Pages
 Finalized Date: 26- AUG- 2011
 Account: F

Project: Andy/Has/Gam

CERTIFICATE OF ANALYSIS WH11138806

Sample Description	Method Analyte Units LOR	WEI- 21	Au- AA24	ME- MS41	ME- MS41	ME- MS41	ME- MS41	ME- MS41	ME- MS41	ME- MS41	ME- MS41	ME- MS41	ME- MS41	ME- MS41	ME- MS41		
		Recvd Wt. kg	Au ppm	Ag ppm	Al %	As ppm	Au ppm	B ppm	Ba ppm	Be ppm	Bi ppm	Ca %	Cd ppm	Ce ppm	Co ppm	Cr ppm	
G285951		0.68	<0.005	0.46	0.16	1.3	<0.2	<10	20	0.29	1.52	0.17	0.25	33.3	0.8	9	
G285952		0.66	<0.005	0.02	0.52	0.9	<0.2	<10	30	0.23	0.61	0.09	0.01	27.2	5.0	4	
G285953		1.32	<0.005	0.16	0.27	0.6	<0.2	<10	10	0.15	2.69	0.10	0.01	2.05	0.6	6	
G285954		0.80	0.027	0.66	1.11	0.6	<0.2	<10	20	0.62	385	0.55	0.14	29.1	4.6	3	
G285955		1.36	<0.005	0.53	1.04	1.4	<0.2	<10	<10	11.90	8.00	2.47	58.2	5.38	4.2	9	
G285956		0.80	<0.005	0.06	0.41	0.6	<0.2	<10	30	0.28	0.33	0.08	0.35	3.61	2.1	7	
G285957		1.34	<0.005	0.12	1.03	0.1	<0.2	<10	30	0.40	2.82	0.12	0.06	11.15	22.6	28	
G285958		0.56	<0.005	44.3	1.52	4.3	<0.2	<10	<10	1.15	99.6	1.78	78.6	0.37	7.3	5	
G285959		1.14	<0.005	8.93	1.43	1.3	<0.2	<10	20	3.87	19.20	2.02	40.7	6.99	7.4	5	
G285960		1.04	<0.005	0.04	0.26	0.2	<0.2	<10	40	0.22	0.75	0.01	0.18	14.20	9.0	7	
G285961		0.80	<0.005	0.80	0.17	0.2	<0.2	<10	20	0.24	1.98	0.03	1.21	9.62	0.5	8	
G285962		0.82	<0.005	0.07	0.15	0.1	<0.2	<10	20	0.47	0.71	0.01	0.16	6.70	0.4	8	
G285963		0.94	<0.005	0.10	0.16	0.3	<0.2	<10	20	0.45	0.46	<0.01	0.06	1.75	0.5	8	
G285964		0.90	<0.005	0.11	0.46	0.4	<0.2	<10	50	0.32	0.42	<0.01	0.05	24.3	0.4	5	
G285965		1.92	<0.005	1.42	0.43	55.2	<0.2	<10	20	0.05	0.11	3.63	0.24	2.50	8.5	216	
G285966		1.04	0.007	0.19	0.12	182.5	<0.2	<10	100	0.05	0.16	0.07	0.23	12.85	1.9	17	
G285967		0.92	<0.005	0.06	0.03	379	<0.2	<10	20	0.07	0.07	1.05	0.06	0.38	42.7	107	
G285968		0.76	0.015	0.09	0.59	109.5	<0.2	10	50	0.27	0.06	8.72	0.11	1.97	35.9	364	
G285969		0.70	<0.005	0.02	0.03	5	<0.2	<10	40	0.49	0.02	15.45	0.02	0.16	5.8	96	
G285970		1.02	<0.005	0.02	0.06	3.5	<0.2	70	90	0.99	3.5	0.01	0.38	0.01	0.04	108.0	809
G285971		1.10	<0.005	0.01	0.05	2.4	<0.2	<10	50	0.11	0.01	0.91	0.01	0.08	42.2	516	
G285972		0.96	<0.005	0.01	0.22	<2	<0.2	<10	10	0.11	0.02	11.50	0.02	0.16	7.8	10	
G285973		0.72	<0.005	0.01	0.11	0.9	<0.2	<10	40	0.05	0.02	4.04	0.03	0.36	7.0	34	
G285974		0.90	<0.005	0.10	0.16	1.8	<0.2	<10	70	<0.05	0.12	0.16	0.10	3.04	2.7	12	
G285975		1.18	<0.005	0.11	0.07	1.3	<0.2	<10	70	<0.05	0.08	0.59	0.50	2.26	2.9	10	
G285976		0.96	<0.005	0.36	0.06	15.1	<0.2	<10	90	<0.05	0.47	0.27	0.07	4.58	1.3	10	
G285977		0.94	<0.005	<0.01	0.03	<2	<0.2	<10	10	<0.05	0.02	19.70	0.04	1.00	0.6	<1	
G285978		0.76	0.008	0.36	0.18	1.2	<0.2	<10	10	<0.05	0.36	0.14	0.04	1.09	0.7	11	
G285979		0.68	<0.005	0.06	0.14	3.9	<0.2	<10	30	0.50	0.04	0.02	0.01	2.08	0.6	14	
G285980		0.80	<0.005	0.02	0.01	0.6	<0.2	<10	<10	0.05	0.02	0.01	0.01	0.12	0.2	12	
G285981		1.28	<0.005	0.04	0.25	2.7	<0.2	<10	10	0.08	0.08	0.04	0.02	15.85	3.3	18	
G285982		0.90	0.156	0.17	0.01	0.9	<0.2	<10	<10	<0.05	0.69	0.33	0.06	0.13	0.2	11	
G285983		0.76	<0.005	0.02	0.41	1.9	<0.2	<10	<10	0.10	0.09	0.53	0.07	7.06	0.8	24	
G285984		0.28	0.417	2.36	1.03	121.5	0.3	<10	40	0.51	0.55	0.47	1.02	23.7	19.5	28	
G285985		0.88	0.037	1.27	0.02	51.0	<0.2	<10	10	<0.05	0.18	0.01	0.05	0.30	0.8	13	
G285986		0.88	<0.005	0.06	0.03	3.6	<0.2	<10	<10	2.11	0.04	0.21	0.02	2.38	0.9	10	

***** See Appendix Page for comments regarding this certificate *****



ALS Canada Ltd.
 2103 Dollarton Hwy
 North Vancouver BC V7H 0A7
 Phone: 604 984 0221 Fax: 604 984 0218 www.alsglobal.com

To: ARCHER, CATHRO AND ASSOCIATES (1981)
 LIMITED
 1016- 510 W HASTINGS ST
 VANCOUVER BC V6B 1L8

Page: 2 - B
 Total # Pages: 2 (A - D)
 Plus Appendix Pages
 Finalized Date: 26- AUG- 2011
 Account: F

Project: Andy/Has/Gam

CERTIFICATE OF ANALYSIS WH11138806

Sample Description	Method Analyte Units LOR	ME- MS41	ME- MS41	ME- MS41	ME- MS41	ME- MS41	ME- MS41	ME- MS41	ME- MS41	ME- MS41	ME- MS41	ME- MS41	ME- MS41	ME- MS41	ME- MS41		
		Cs ppm	Cu ppm	Fe %	Ga ppm	Ge ppm	Hf ppm	Hg ppm	In ppm	K %	La ppm	Li ppm	Mg %	Mn ppm	Mo ppm	Na %	
G285951		0.49	2.4	0.50	0.73	0.08	0.04	<0.01	0.018	0.10	17.3	1.8	0.03	428	15.70	0.01	
G285952		0.57	2.9	2.68	5.64	0.10	0.14	<0.01	0.007	0.19	14.8	7.4	0.13	150	8.09	0.07	
G285953		0.98	17.4	0.66	0.95	0.07	0.02	<0.01	0.008	0.08	1.0	1.8	0.02	84	0.62	0.05	
G285954		2.35	155.0	4.46	10.75	0.14	0.13	<0.01	0.012	0.09	14.5	18.5	0.31	333	0.25	0.11	
G285955		0.05	46.6	1.93	4.83	0.65	0.05	2.20	1.515	<0.01	2.6	13.4	0.26	2530	0.88	0.01	
G285956		0.71	10.7	1.21	1.88	0.07	0.09	0.01	0.013	0.12	1.9	9.1	0.08	108	0.70	0.08	
G285957		3.78	67.4	3.88	3.66	0.10	<0.02	<0.01	0.013	0.19	5.6	39.9	0.46	289	1.88	0.06	
G285958		0.48	370	4.89	8.29	0.21	0.03	0.06	0.802	0.06	0.2	54.8	0.24	2700	0.12	0.01	
G285959		1.31	103.5	3.69	5.82	0.19	0.05	0.01	0.244	0.19	3.0	30.5	0.20	2940	0.15	0.02	
G285960		0.20	2.0	3.61	1.39	0.08	0.05	0.02	<0.005	0.20	7.6	2.1	0.01	49	45.1	<0.01	
G285961		0.22	7.1	2.40	0.80	0.08	0.06	0.01	0.016	0.13	4.9	1.8	0.01	67	222	0.01	
G285962		0.17	2.3	2.92	0.73	0.09	0.04	0.02	<0.005	0.21	3.5	0.9	0.01	52	617	0.02	
G285963		0.18	1.4	2.71	0.72	0.07	0.20	<0.01	<0.005	0.16	0.8	0.9	<0.01	24	32.0	0.01	
G285964		0.38	2.6	1.84	1.91	0.09	0.11	<0.01	<0.005	0.34	12.5	1.2	0.01	39	4.48	0.02	
G285965		0.09	34.7	1.17	1.36	0.09	<0.02	<0.01	0.010	0.02	1.0	6.1	2.52	983	3.66	0.01	
G285966		0.09	21.1	0.75	0.35	0.08	0.18	0.01	0.005	0.02	5.7	1.6	0.04	291	0.79	0.01	
G285967		0.33	7.0	2.35	0.18	0.10	<0.02	0.01	<0.005	0.02	0.2	1.5	13.05	611	0.35	0.01	
G285968		4.78	1.5	3.13	1.63	0.08	<0.02	0.02	0.023	0.08	0.8	28.6	7.61	1120	0.34	<0.01	
G285969		0.27	1.0	0.98	0.07	0.08	<0.02	0.05	0.007	<0.01	<0.2	1.3	15.30	153	0.06	<0.01	
G285970		2.06	3.5	6.01	0.39	0.11	<0.02	3.5	0.48	0.009	0.01	<0.2	9.7	18.35	1050	0.11	<0.01
G285971		1.90	2.5	2.09	0.26	0.08	<0.02	0.03	0.008	0.01	<0.2	7.0	10.50	333	0.29	<0.01	
G285972		0.92	2.6	2.22	0.50	0.09	<0.02	0.05	0.010	0.03	<0.2	17.3	6.54	544	0.13	<0.01	
G285973		0.38	3.1	1.05	0.31	0.08	<0.02	0.06	0.009	0.01	<0.2	3.3	2.64	477	0.14	<0.01	
G285974		0.11	21.5	0.83	0.49	0.07	0.06	0.02	0.009	0.01	1.3	2.0	0.14	573	0.73	0.01	
G285975		0.07	26.4	0.50	0.18	0.07	0.09	0.02	0.009	0.01	1.1	1.4	0.25	741	0.29	<0.01	
G285976		0.08	10.7	0.71	0.21	0.07	0.07	0.01	0.007	0.01	2.1	0.8	0.18	394	0.84	<0.01	
G285977		0.10	1.1	0.37	0.10	0.09	<0.02	<0.01	0.008	0.01	0.5	1.0	12.35	183	0.13	<0.01	
G285978		<0.05	142.5	0.54	0.47	0.07	<0.02	0.01	0.015	0.01	0.6	2.3	0.21	106	0.15	<0.01	
G285979		0.38	6.8	0.81	0.37	0.07	<0.02	<0.01	0.007	0.08	1.3	1.4	0.02	89	0.34	<0.01	
G285980		<0.05	2.1	0.40	0.08	0.06	<0.02	<0.01	0.006	<0.01	<0.2	0.2	0.01	47	0.16	<0.01	
G285981		0.25	11.2	0.74	0.76	0.08	0.03	<0.01	0.009	0.05	7.6	3.0	0.11	131	0.23	<0.01	
G285982		<0.05	5.1	0.45	0.09	0.06	<0.02	<0.01	0.008	<0.01	<0.2	0.2	0.18	47	0.22	<0.01	
G285983		<0.05	1.8	0.52	1.84	0.23	0.04	<0.01	0.013	<0.01	3.3	0.3	0.03	55	0.21	<0.01	
G285984		2.90	4380	4.46	4.10	0.15	0.08	0.11	0.054	0.58	11.7	4.5	0.63	494	260	<0.01	
G285985		0.06	7.0	0.72	0.12	0.07	<0.02	0.03	0.009	0.01	<0.2	0.6	0.01	55	0.56	<0.01	
G285986		0.09	8.9	0.48	0.18	0.07	<0.02	<0.01	0.007	0.01	0.9	0.6	0.02	65	0.24	<0.01	

***** See Appendix Page for comments regarding this certificate *****



ALS Canada Ltd.
 2103 Dollarton Hwy
 North Vancouver BC V7H 0A7
 Phone: 604 984 0221 Fax: 604 984 0218 www.alsglobal.com

To: ARCHER, CATHRO AND ASSOCIATES (1981)
 LIMITED
 1016- 510 W HASTINGS ST
 VANCOUVER BC V6B 1L8

Page: 2 - C
 Total # Pages: 2 (A - D)
 Plus Appendix Pages
 Finalized Date: 26- AUG- 2011
 Account: F

Project: Andy/Has/Gam

CERTIFICATE OF ANALYSIS WH11138806

Sample Description	Method Analyte Units LOR	ME- MS41	ME- MS41	ME- MS41	ME- MS41	ME- MS41	ME- MS41	ME- MS41	ME- MS41	ME- MS41	ME- MS41	ME- MS41	ME- MS41	ME- MS41	ME- MS41	
		Nb ppm	Ni ppm	P ppm	Pb ppm	Rb ppm	Re ppm	S %	Sb ppm	Sc ppm	Se ppm	Sn ppm	Sr ppm	Ta ppm	Te ppm	Th ppm
G285951		0.07	0.9	150	49.5	9.5	<0.001	<0.01	0.08	0.5	0.3	0.2	3.8	<0.01	0.04	5.0
G285952		1.14	0.5	460	11.2	14.0	<0.001	0.67	<0.05	1.9	0.5	3.5	22.6	<0.01	0.04	13.2
G285953		0.27	0.7	120	8.0	5.7	<0.001	0.09	<0.05	0.4	0.3	0.3	12.4	<0.01	0.02	0.5
G285954		1.61	0.8	2390	7.8	9.6	<0.001	0.83	0.06	4.3	1.1	1.4	32.9	0.01	3.14	6.0
G285955		0.37	3.9	520	21.9	0.3	0.015	0.30	0.17	1.4	0.5	18.1	27.3	<0.01	0.03	1.9
G285956		0.24	2.2	100	11.6	5.9	<0.001	0.22	<0.05	0.5	0.4	0.3	13.8	<0.01	0.02	0.9
G285957		0.34	46.1	120	10.9	16.4	0.004	1.78	<0.05	3.2	1.1	0.2	8.6	<0.01	0.11	2.6
G285958		0.45	1.0	<10	>10000	7.0	<0.001	3.18	0.05	1.4	2.5	9.7	54.3	0.03	0.88	<0.2
G285959		0.48	1.7	1250	>10000	16.3	<0.001	1.26	0.16	1.2	1.7	11.4	83.0	0.02	0.38	1.0
G285960		0.18	5.3	30	61.5	18.3	<0.001	2.94	<0.05	0.2	0.2	2.1	1.2	<0.01	0.03	2.2
G285961		0.19	0.4	20	260	11.7	<0.001	1.35	<0.05	0.3	0.6	1.3	1.6	<0.01	0.04	2.2
G285962		0.28	0.6	30	66.5	12.7	<0.001	1.06	<0.05	0.3	1.1	1.4	1.3	<0.01	0.03	1.2
G285963		0.62	0.4	30	21.8	11.8	<0.001	1.99	<0.05	0.3	0.6	1.3	0.6	<0.01	0.02	1.1
G285964		0.22	0.3	40	19.0	28.2	<0.001	1.04	<0.05	0.5	0.5	3.6	1.3	<0.01	0.01	5.5
G285965		<0.05	96.8	20	32.0	1.1	<0.001	0.02	4.94	4.2	0.4	<0.2	223	<0.01	0.03	<0.2
G285966		0.06	20.6	80	11.1	1.2	<0.001	0.02	2.80	1.1	0.4	<0.2	14.4	<0.01	0.02	1.9
G285967		<0.05	1110	10	5.3	1.3	<0.001	0.01	8.24	2.8	0.3	<0.2	175.5	<0.01	0.05	<0.2
G285968		<0.05	511	120	3.6	4.2	<0.001	<0.01	11.85	10.3	0.3	<0.2	451	<0.01	0.01	0.2
G285969		<0.05	158.5	<10	1.1	0.2	<0.001	<0.01	0.37	0.9	0.3	<0.2	1190	<0.01	0.01	<0.2
G285970		<0.05	1785	10	1.1	1.2	<0.001	0.14	3.48	4.7	<0.2	<0.2	33.1	<0.01	<0.01	<0.2
G285971		<0.05	784	10	0.9	0.9	<0.001	<0.01	1.81	2.2	<0.2	<0.2	93.7	<0.01	<0.01	<0.2
G285972		<0.05	16.4	10	0.5	1.0	<0.001	<0.01	0.08	6.2	0.3	<0.2	231	<0.01	<0.01	<0.2
G285973		<0.05	50.8	20	1.2	0.6	<0.001	0.09	0.14	3.0	0.4	<0.2	52.0	<0.01	<0.01	<0.2
G285974		0.05	15.6	310	10.4	0.7	<0.001	<0.01	0.38	1.4	0.3	<0.2	15.2	<0.01	0.01	0.7
G285975		<0.05	14.6	80	6.0	0.6	<0.001	0.01	0.43	0.7	0.5	<0.2	44.9	<0.01	0.01	0.4
G285976		<0.05	13.1	60	81.8	0.4	<0.001	<0.01	0.64	0.8	0.4	<0.2	22.5	<0.01	0.07	0.6
G285977		<0.05	1.9	220	1.2	0.7	<0.001	<0.01	<0.05	0.3	0.2	<0.2	44.1	<0.01	<0.01	<0.2
G285978		<0.05	4.0	50	15.8	0.6	<0.001	0.01	0.06	0.5	0.4	<0.2	1.2	<0.01	0.27	0.4
G285979		0.06	2.2	80	8.8	5.8	<0.001	0.01	0.08	0.4	0.2	0.4	2.4	<0.01	0.01	0.4
G285980		<0.05	1.6	10	3.5	0.1	<0.001	<0.01	<0.05	0.2	<0.2	<0.2	<0.2	<0.01	<0.01	<0.2
G285981		<0.05	5.8	170	10.4	3.3	<0.001	<0.01	0.17	0.7	<0.2	<0.2	0.9	<0.01	0.01	2.4
G285982		0.05	0.9	10	40.3	0.2	<0.001	<0.01	0.10	0.2	0.2	<0.2	0.7	<0.01	0.12	<0.2
G285983		1.27	2.3	90	1.6	0.1	<0.001	<0.01	0.16	1.0	<0.2	0.6	62.9	0.01	0.02	3.8
G285984		0.17	20.9	1020	39.8	34.3	0.641	2.48	5.78	7.1	7.5	2.0	33.8	<0.01	0.98	1.5
G285985		0.05	3.6	10	52.4	0.7	0.001	0.01	1.56	0.2	0.5	<0.2	0.5	<0.01	0.05	<0.2
G285986		0.05	4.7	910	1.5	0.8	<0.001	<0.01	0.20	0.4	0.6	<0.2	8.3	<0.01	0.01	<0.2



ALS Canada Ltd.
 2103 Dollarton Hwy
 North Vancouver BC V7H 0A7
 Phone: 604 984 0221 Fax: 604 984 0218 www.alsglobal.com

To: ARCHER, CATHRO AND ASSOCIATES (1981)
 LIMITED
 1016- 510 W HASTINGS ST
 VANCOUVER BC V6B 1L8

Page: 2 - D
 Total # Pages: 2 (A - D)
 Plus Appendix Pages
 Finalized Date: 26- AUG- 2011
 Account: F

Project: Andy/Has/Gam

CERTIFICATE OF ANALYSIS WH11138806

Sample Description	Method Analyte Units LOR	ME- MS41	ME- MS41	ME- MS41	ME- MS41	ME- MS41	ME- MS41	ME- MS41	ME- MS41	Pb- OG46	Zn- OG46
		Ti %	Ti ppm	U ppm	V ppm	W ppm	Y ppm	Zn ppm	Zr ppm	Pb %	Zn %
		0.005	0.02	0.05	1	0.05	0.05	2	0.5	0.001	0.001
G285951		<0.005	0.07	1.69	1	0.97	4.28	48	1.5		
G285952		0.058	0.09	7.24	10	1.32	3.31	10	4.0		
G285953		<0.005	0.04	2.59	1	0.18	1.36	7	0.5		
G285954		0.065	0.09	2.43	15	0.87	9.47	36	3.2		
G285955		0.011	0.22	1.01	3	2400	1.24	5380	1.5		
G285956		0.009	0.04	0.58	2	7.88	1.27	51	1.6		
G285957		0.035	0.10	1.04	28	2.19	2.45	46	<0.5		
G285958		0.010	0.81	0.38	4	32.1	2.68	>10000	0.5	1.545	1.465
G285959		0.013	0.22	1.74	4	0.88	10.85	>10000	1.0	1.770	1.080
G285960		<0.005	0.06	0.24	2	12.30	0.88	44	1.3		
G285961		<0.005	0.06	0.09	3	3.29	0.61	213	1.3		
G285962		<0.005	0.07	0.09	2	16.70	0.44	44	0.8		
G285963		<0.005	0.04	0.44	1	3.96	0.51	13	2.6		
G285964		<0.005	0.11	0.30	2	4.01	1.90	10	1.9		
G285965		<0.005	<0.02	<0.05	8	0.29	6.19	30	<0.5		
G285966		<0.005	<0.02	0.23	2	0.23	1.94	23	6.5		
G285967		<0.005	<0.02	<0.05	4	0.37	0.20	14	<0.5		
G285968		<0.005	0.06	0.07	28	0.10	4.92	68	<0.5		
G285969		<0.005	<0.02	<0.05	7	0.71	0.39	4	<0.5		
G285970		<0.005	0.19	<0.05	16	1.53	0.07	18	<0.5		
G285971		<0.005	0.02	<0.05	8	0.43	0.10	7	<0.5		
G285972		<0.005	<0.02	<0.05	35	0.18	2.35	14	<0.5		
G285973		<0.005	<0.02	<0.05	11	0.12	1.99	6	<0.5		
G285974		<0.005	<0.02	0.31	2	0.06	2.34	18	2.2		
G285975		<0.005	0.02	0.17	1	<0.05	1.20	37	3.5		
G285976		<0.005	<0.02	0.09	2	0.10	0.90	12	2.4		
G285977		<0.005	<0.02	0.44	1	<0.05	0.69	11	<0.5		
G285978		<0.005	<0.02	0.05	2	0.22	0.34	10	0.5		
G285979		<0.005	0.06	0.05	1	0.56	0.52	7	<0.5		
G285980		<0.005	<0.02	0.06	<1	0.59	0.06	6	<0.5		
G285981		<0.005	0.02	0.20	6	0.07	1.26	8	1.5		
G285982		<0.005	<0.02	<0.05	<1	0.30	0.05	13	<0.5		
G285983		0.067	<0.02	0.34	6	0.17	2.96	2	0.7		
G285984		0.059	0.39	0.56	82	1.14	11.25	145	2.0		
G285985		<0.005	0.05	<0.05	1	0.22	0.05	9	<0.5		
G285986		<0.005	<0.02	<0.05	2	0.48	3.41	5	<0.5		



ALS Canada Ltd.
2103 Dollarton Hwy
North Vancouver BC V7H 0A7
Phone: 604 984 0221 Fax: 604 984 0218 www.alsglobal.com

To: ARCHER, CATHRO AND ASSOCIATES (1981)
LIMITED
1016- 510 W HASTINGS ST
VANCOUVER BC V6B 1L8

Page: Appendix 1
Total # Appendix Pages: 1
Finalized Date: 26- AUG- 2011
Account: F

Project: Andy/Has/Gam

CERTIFICATE OF ANALYSIS WH11138806

Method	CERTIFICATE COMMENTS
ME- MS41	Interference: Ca> 10% on ICP- MS As,ICP- AES results shown.
ME- MS41	Gold determinations by this method are semi- quantitative due to the small sample weight used (0.5g).
ME- MS41	Interference: Mo> 400ppm on ICP- MS Cd,ICP- AES results shown.



ALS Canada Ltd.
 2103 Dollarton Hwy
 North Vancouver BC V7H 0A7
 Phone: 604 984 0221 Fax: 604 984 0218 www.alsglobal.com

To: **ARCHER, CATHRO AND ASSOCIATES (1981) LIMITED**
1016- 510 W HASTINGS ST
VANCOUVER BC V6B 1L8

Page: 1
 Finalized Date: 16- SEP- 2011
 Account: F

CERTIFICATE WH11141108

Project: WLV - Andy
 P.O. No.:
 This report is for 190 Soil samples submitted to our lab in Whitehorse, YT, Canada on 28-JUL- 2011.
 The following have access to data associated with this certificate:
 JOAN MARIACHER HEATHER SMITH

SAMPLE PREPARATION	
ALS CODE	DESCRIPTION
WEI- 21	Received Sample Weight
LOG- 22	Sample login - Rcd w/o BarCode
SCR- 41	Screen to - 180um and save both

ANALYTICAL PROCEDURES		
ALS CODE	DESCRIPTION	INSTRUMENT
Au- ICP21	Au 30g FA ICP- AES Finish	ICP- AES
ME- ICP41	35 Element Aqua Regia ICP- AES	ICP- AES

To: **ARCHER, CATHRO AND ASSOCIATES (1981) LIMITED**
ATTN: JOAN MARIACHER
1016- 510 W HASTINGS ST
VANCOUVER BC V6B 1L8

This is the Final Report and supersedes any preliminary report with this certificate number. Results apply to samples as submitted. All pages of this report have been checked and approved for release.

Signature: 
 Colin Ramshaw, Vancouver Laboratory Manager



ALS Canada Ltd.
 2103 Dollarton Hwy
 North Vancouver BC V7H 0A7
 Phone: 604 984 0221 Fax: 604 984 0218 www.alsglobal.com

To: ARCHER, CATHRO AND ASSOCIATES (1981)
 LIMITED
 1016- 510 W HASTINGS ST
 VANCOUVER BC V6B 1L8

Page: 2 - A
 Total # Pages: 6 (A - C)
 Plus Appendix Pages
 Finalized Date: 16- SEP- 2011
 Account: F

Project: WLV - Andy

CERTIFICATE OF ANALYSIS WH11141108

Sample Description	Method Analyte Units LOR	WEI- 21	Au- ICP21	ME- ICP41	ME- ICP41	ME- ICP41	ME- ICP41	ME- ICP41	ME- ICP41	ME- ICP41	ME- ICP41	ME- ICP41	ME- ICP41	ME- ICP41	ME- ICP41	ME- ICP41
		Recvd Wt. kg	Au ppm	Ag ppm	Al %	As ppm	B ppm	Ba ppm	Be ppm	Bi ppm	Ca %	Cd ppm	Co ppm	Cr ppm	Cu ppm	Fe %
		0.02	0.001	0.2	0.01	2	10	10	0.5	2	0.01	0.5	1	1	1	0.01
CC147601		0.22	<0.001	<0.2	1.06	2	<10	20	0.5	<2	0.13	<0.5	3	8	8	1.75
CC147602		0.32	<0.001	0.3	1.02	3	<10	20	<0.5	2	0.08	<0.5	4	5	6	1.54
CC147603		0.34	<0.001	<0.2	0.86	2	<10	40	<0.5	2	0.03	<0.5	3	3	2	0.80
CC147604		0.10	<0.001	<0.2	1.75	2	<10	30	0.5	2	0.06	<0.5	3	6	5	2.43
CC147605		0.14	<0.001	<0.2	1.64	<2	<10	40	0.5	<2	0.04	<0.5	4	6	7	1.48
CC147606		0.12	0.007	0.2	0.66	<2	<10	10	<0.5	2	0.03	<0.5	4	3	5	1.19
CC147607		0.14	<0.001	<0.2	0.88	6	<10	10	0.9	3	0.16	1.0	5	8	13	1.75
CC147608		0.10	<0.001	<0.2	1.22	2	<10	40	0.7	2	0.08	0.5	5	6	15	1.45
CC147609		0.24	<0.001	<0.2	1.32	<2	<10	40	<0.5	<2	0.04	<0.5	3	5	4	1.17
CC147610		0.16	<0.001	<0.2	1.56	2	<10	40	0.6	2	0.15	<0.5	5	11	5	2.35
CC147611		0.14	<0.001	<0.2	1.36	4	<10	40	0.5	5	0.03	<0.5	4	8	7	3.34
CC147612		0.16	0.002	0.5	0.65	<2	<10	30	0.5	<2	0.05	<0.5	3	3	5	0.71
CC147613		0.22	0.002	0.3	2.97	5	<10	130	1.3	4	0.05	<0.5	6	16	37	3.65
CC147614		0.16	<0.001	0.2	0.42	2	<10	20	<0.5	<2	0.02	<0.5	3	2	2	0.78
CC147615		0.18	<0.001	0.2	0.21	<2	<10	20	<0.5	<2	0.02	<0.5	2	1	2	0.10
CC147616		0.14	<0.001	<0.2	0.18	<2	<10	10	<0.5	<2	0.02	<0.5	2	1	1	0.18
CC147617		0.12	<0.001	0.2	1.03	<2	<10	50	1.0	<2	0.06	<0.5	3	4	8	1.32
CC147618		0.20	<0.001	0.2	1.24	2	<10	80	1.8	2	0.08	<0.5	5	6	13	1.64
CC147619		0.16	<0.001	<0.2	0.56	2	<10	20	<0.5	<2	0.01	<0.5	3	4	4	0.91
CC147620		0.18	NSS	0.3	1.61	3	<10	70	1.9	<2	0.06	<0.5	5	8	14	1.91
CC147621		0.14	NSS	0.4	2.00	<2	<10	80	2.4	<2	0.07	<0.5	7	6	12	1.70
CC147622		0.14	<0.001	<0.2	0.75	<2	<10	30	<0.5	2	0.02	<0.5	3	5	3	1.60
CC147623		0.28	0.001	0.2	0.92	2	<10	40	4.1	<2	0.41	0.7	3	3	7	0.59
CC147624		0.16	<0.001	<0.2	0.44	<2	<10	10	<0.5	2	0.01	<0.5	3	2	3	0.81
CC147625		0.18	<0.001	<0.2	0.53	<2	<10	30	<0.5	<2	0.04	<0.5	4	3	3	1.10
CC147626		0.22	0.008	0.2	1.03	2	<10	20	<0.5	3	0.02	<0.5	3	4	3	2.59
CC147627		0.14	<0.001	<0.2	2.19	<2	<10	40	0.6	2	0.02	<0.5	6	7	5	2.57
CC147628		0.14	0.014	<0.2	0.53	<2	<10	30	<0.5	<2	0.02	<0.5	3	3	4	0.44
CC147629		0.22	0.001	<0.2	0.69	<2	<10	20	<0.5	2	0.01	<0.5	1	2	3	1.27
CC147630		0.14	<0.001	<0.2	0.62	<2	<10	20	<0.5	<2	0.01	<0.5	1	3	3	1.31
CC147631		0.24	<0.001	<0.2	1.80	2	<10	180	1.6	2	0.30	0.5	4	8	14	2.08
CC147632		0.22	<0.001	<0.2	0.57	<2	<10	20	<0.5	<2	0.02	<0.5	1	3	3	1.12
CC147633		0.22	<0.001	<0.2	1.11	<2	<10	30	<0.5	2	0.02	<0.5	2	4	5	2.06
CC147634		0.16	<0.001	<0.2	0.33	<2	<10	30	<0.5	2	0.03	<0.5	1	1	2	0.36
CC147635		0.18	NSS	<0.2	1.97	<2	<10	30	0.5	2	0.02	<0.5	5	4	6	2.03
CC147636		0.16	<0.001	<0.2	0.69	<2	<10	30	<0.5	<2	0.02	<0.5	2	4	35	0.85
CC147637		0.14	<0.001	<0.2	0.59	<2	<10	30	<0.5	4	0.02	<0.5	1	6	25	0.78
CC147638		0.14	0.001	0.2	0.74	<2	<10	40	<0.5	2	0.03	<0.5	2	4	20	0.98
CC147639		0.20	<0.001	<0.2	0.63	<2	<10	20	<0.5	2	0.02	<0.5	1	4	11	0.63
CC147640		0.24	<0.001	<0.2	1.16	2	<10	30	<0.5	2	0.02	<0.5	2	10	14	3.50



ALS Canada Ltd.
 2103 Dollarton Hwy
 North Vancouver BC V7H 0A7
 Phone: 604 984 0221 Fax: 604 984 0218 www.alsglobal.com

To: ARCHER, CATHRO AND ASSOCIATES (1981)
 LIMITED
 1016- 510 W HASTINGS ST
 VANCOUVER BC V6B 1L8

Page: 2 - B
 Total # Pages: 6 (A - C)
 Plus Appendix Pages
 Finalized Date: 16- SEP- 2011
 Account: F

Project: WLV - Andy

CERTIFICATE OF ANALYSIS WH11141108

Sample Description	Method Analyte Units LOR	ME- ICP41	ME- ICP41	ME- ICP41	ME- ICP41	ME- ICP41	ME- ICP41	ME- ICP41	ME- ICP41	ME- ICP41	ME- ICP41	ME- ICP41	ME- ICP41	ME- ICP41	ME- ICP41	
		Ga ppm	Hg ppm	K %	La ppm	Mg %	Mn ppm	Mo ppm	Na %	Ni ppm	P ppm	Pb ppm	S %	Sb ppm	Sc ppm	Sr ppm
CC147601		10	<1	0.09	10	0.28	363	<1	<0.01	3	460	24	<0.01	<2	2	7
CC147602		10	<1	0.08	10	0.18	252	<1	0.02	1	350	27	0.02	<2	1	3
CC147603		10	<1	0.07	10	0.07	87	<1	0.02	1	160	11	0.02	<2	1	3
CC147604		10	<1	0.07	10	0.11	170	1	0.03	1	530	27	0.03	<2	1	5
CC147605		10	<1	0.11	10	0.18	220	<1	0.02	5	310	20	0.02	<2	2	3
CC147606		<10	<1	0.04	10	0.08	143	<1	0.03	1	490	33	0.05	<2	<1	6
CC147607		<10	<1	0.07	10	0.24	429	<1	0.02	4	580	83	0.04	<2	1	9
CC147608		10	<1	0.07	10	0.15	461	7	0.03	2	300	46	0.03	<2	1	8
CC147609		10	<1	0.10	10	0.14	197	1	0.02	2	190	14	0.02	<2	2	5
CC147610		10	<1	0.19	20	0.31	292	2	0.03	4	160	20	0.02	<2	3	9
CC147611		20	<1	0.10	10	0.09	324	4	0.03	2	720	29	0.03	<2	1	5
CC147612		<10	<1	0.04	20	0.05	89	<1	0.04	1	290	63	0.03	<2	1	6
CC147613		20	1	0.32	10	0.36	436	17	0.02	7	420	93	0.03	<2	4	10
CC147614		10	<1	0.04	10	0.04	55	5	0.03	1	150	6	0.02	<2	1	6
CC147615		<10	<1	0.02	10	0.01	14	<1	0.03	<1	90	2	0.01	<2	<1	3
CC147616		<10	<1	0.02	10	0.01	14	1	0.03	<1	140	2	0.02	<2	<1	3
CC147617		<10	<1	0.04	20	0.07	127	8	0.03	2	270	30	0.02	<2	1	6
CC147618		<10	<1	0.09	60	0.18	378	11	0.03	3	280	55	0.03	<2	2	9
CC147619		10	<1	0.04	10	0.03	80	9	0.02	2	180	12	0.02	<2	1	3
CC147620		10	<1	0.11	120	0.12	425	15	0.03	2	450	48	0.06	<2	2	10
CC147621		10	<1	0.10	50	0.20	1380	8	0.03	3	380	56	0.04	<2	2	7
CC147622		10	<1	0.04	10	0.08	195	8	0.02	2	240	11	0.02	<2	1	3
CC147623		<10	<1	0.03	40	0.05	226	6	0.04	1	410	11	0.07	<2	<1	18
CC147624		10	<1	0.03	10	0.04	91	3	0.03	<1	160	6	0.02	<2	1	2
CC147625		<10	<1	0.05	10	0.10	304	5	0.02	1	430	22	0.02	<2	1	3
CC147626		10	<1	0.06	10	0.06	170	8	0.02	1	370	14	0.03	<2	1	3
CC147627		10	1	0.06	20	0.13	793	10	0.02	2	400	40	0.03	<2	2	2
CC147628		<10	<1	0.03	10	0.02	30	2	0.03	2	290	10	0.03	<2	<1	5
CC147629		10	<1	0.04	10	0.05	103	4	0.01	<1	190	6	0.01	<2	1	3
CC147630		10	<1	0.04	10	0.05	91	4	0.01	1	170	7	0.01	<2	1	3
CC147631		10	<1	0.12	30	0.24	684	11	0.01	4	290	59	0.02	<2	2	16
CC147632		10	<1	0.03	10	0.03	79	9	0.01	1	150	6	0.01	<2	1	4
CC147633		10	1	0.05	20	0.13	197	10	0.01	1	270	13	0.01	<2	1	3
CC147634		<10	<1	0.02	<10	0.02	31	<1	0.03	<1	300	3	0.01	<2	<1	6
CC147635		10	<1	0.05	10	0.08	225	11	0.01	<1	510	22	0.03	<2	1	4
CC147636		<10	<1	0.03	10	0.04	74	3	0.01	33	350	15	0.03	<2	<1	5
CC147637		<10	<1	0.03	10	0.02	46	5	0.01	22	260	22	0.02	<2	<1	6
CC147638		10	<1	0.04	10	0.09	170	5	0.02	15	240	26	0.02	<2	1	6
CC147639		10	<1	0.03	10	0.03	47	3	0.01	10	140	11	0.01	<2	1	3
CC147640		20	<1	0.04	20	0.11	127	5	0.01	10	310	15	0.02	<2	1	5



ALS Canada Ltd.
 2103 Dollarton Hwy
 North Vancouver BC V7H 0A7
 Phone: 604 984 0221 Fax: 604 984 0218 www.alsglobal.com

To: ARCHER, CATHRO AND ASSOCIATES (1981)
 LIMITED
 1016- 510 W HASTINGS ST
 VANCOUVER BC V6B 1L8

Page: 2 - C
 Total # Pages: 6 (A - C)
 Plus Appendix Pages
 Finalized Date: 16- SEP- 2011
 Account: F

Project: WLV - Andy

CERTIFICATE OF ANALYSIS WH11141108

Sample Description	Method Analyte Units LOR	ME- ICP41	ME- ICP41	ME- ICP41	ME- ICP41	ME- ICP41	ME- ICP41	ME- ICP41
		Th ppm	Ti %	Ti ppm	U ppm	V ppm	W ppm	Zn ppm
		20	0.01	10	10	1	10	2
CC147601	<20	0.04	<10	<10	19	<10	85	
CC147602	<20	0.03	<10	<10	17	<10	61	
CC147603	<20	0.02	<10	<10	14	<10	20	
CC147604	<20	0.05	<10	<10	28	<10	47	
CC147605	<20	0.04	<10	<10	18	<10	46	
CC147606	<20	0.01	<10	<10	13	<10	49	
CC147607	<20	0.03	<10	10	16	10	130	
CC147608	<20	0.04	<10	20	25	<10	53	
CC147609	<20	0.03	<10	<10	19	<10	39	
CC147610	<20	0.07	<10	<10	36	<10	75	
CC147611	<20	0.09	<10	<10	52	<10	51	
CC147612	<20	0.02	<10	<10	10	<10	42	
CC147613	<20	0.03	<10	<10	55	<10	161	
CC147614	<20	0.05	<10	<10	26	<10	13	
CC147615	<20	0.01	<10	<10	3	<10	4	
CC147616	<20	0.01	<10	<10	5	<10	4	
CC147617	<20	0.02	<10	<10	13	<10	34	
CC147618	<20	0.03	<10	10	16	<10	61	
CC147619	<20	0.02	<10	<10	18	<10	19	
CC147620	<20	0.03	<10	40	16	<10	75	
CC147621	<20	0.02	<10	20	15	<10	109	
CC147622	<20	0.03	<10	<10	24	<10	24	
CC147623	<20	0.02	<10	20	8	<10	58	
CC147624	<20	0.02	<10	<10	15	<10	14	
CC147625	<20	0.02	<10	<10	10	<10	43	
CC147626	<20	0.04	<10	<10	29	<10	36	
CC147627	<20	0.03	<10	<10	22	<10	73	
CC147628	<20	0.02	<10	<10	12	<10	11	
CC147629	<20	0.03	<10	<10	20	<10	20	
CC147630	<20	0.03	<10	<10	20	<10	25	
CC147631	<20	0.02	<10	<10	22	<10	139	
CC147632	<20	0.03	<10	<10	22	<10	18	
CC147633	<20	0.02	<10	<10	19	<10	34	
CC147634	<20	0.01	<10	<10	7	<10	5	
CC147635	<20	0.03	<10	<10	16	<10	23	
CC147636	<20	0.02	<10	<10	17	<10	46	
CC147637	<20	0.01	<10	<10	15	<10	29	
CC147638	<20	0.02	<10	<10	13	<10	54	
CC147639	<20	0.01	<10	<10	12	<10	21	
CC147640	<20	0.07	<10	<10	59	<10	39	



ALS Canada Ltd.
 2103 Dollarton Hwy
 North Vancouver BC V7H 0A7
 Phone: 604 984 0221 Fax: 604 984 0218 www.alsglobal.com

To: ARCHER, CATHRO AND ASSOCIATES (1981)
 LIMITED
 1016- 510 W HASTINGS ST
 VANCOUVER BC V6B 1L8

Page: 3 - A
 Total # Pages: 6 (A - C)
 Plus Appendix Pages
 Finalized Date: 16- SEP- 2011
 Account: F

Project: WLV - Andy

CERTIFICATE OF ANALYSIS WH11141108

Sample Description	Method Analyte Units LOR	WEI- 21	Au- ICP21	ME- ICP41	ME- ICP41	ME- ICP41	ME- ICP41	ME- ICP41	ME- ICP41	ME- ICP41	ME- ICP41	ME- ICP41	ME- ICP41	ME- ICP41	ME- ICP41	ME- ICP41
		Recvd Wt. kg	Au ppm	Ag ppm	Al %	As ppm	B ppm	Ba ppm	Be ppm	Bi ppm	Ca %	Cd ppm	Co ppm	Cr ppm	Cu ppm	Fe %
		0.02	0.001	0.2	0.01	2	10	10	0.5	2	0.01	0.5	1	1	1	0.01
CC147641		0.22	<0.001	<0.2	0.64	<2	<10	30	<0.5	3	0.01	<0.5	1	3	6	1.42
CC147642		0.16	0.006	<0.2	0.21	<2	<10	30	<0.5	2	0.03	<0.5	1	2	4	0.26
CC147643		0.22	<0.001	<0.2	1.84	<2	<10	40	0.5	2	0.04	<0.5	2	7	4	2.32
CC147644		0.14	<0.001	<0.2	0.35	<2	<10	20	<0.5	3	0.02	<0.5	1	2	2	0.36
CC147645		0.18	<0.001	<0.2	0.63	<2	<10	20	<0.5	3	0.04	<0.5	1	3	2	1.10
CC147646		0.22	<0.001	0.2	0.97	<2	<10	20	1.1	7	0.21	0.6	3	3	13	1.77
CC147647		0.24	<0.001	<0.2	0.73	<2	<10	20	<0.5	5	0.03	<0.5	1	4	3	1.23
CC147648		0.34	<0.001	<0.2	0.47	<2	<10	10	<0.5	2	0.02	<0.5	<1	2	2	0.44
CC147649		0.16	0.008	0.9	0.70	<2	<10	40	0.5	3	0.30	<0.5	1	4	7	0.65
CC147650		0.24	<0.001	<0.2	0.48	<2	<10	20	<0.5	2	0.04	<0.5	1	3	6	0.67
CC147651		0.22	<0.001	<0.2	1.59	<2	<10	50	0.6	3	0.04	<0.5	3	9	7	2.15
CC147652		0.18	0.001	0.2	1.28	<2	<10	30	<0.5	2	0.02	<0.5	1	6	5	2.10
CC147653		0.30	<0.001	<0.2	0.96	2	<10	30	<0.5	2	0.02	<0.5	1	7	6	2.29
CC147654		0.26	0.005	0.2	1.32	3	<10	30	<0.5	4	0.04	<0.5	3	11	7	3.36
CC147655		0.26	<0.001	<0.2	0.65	<2	<10	20	<0.5	3	0.03	<0.5	1	5	3	1.16
CC147656		0.26	<0.001	<0.2	0.36	<2	<10	20	<0.5	2	0.02	<0.5	1	3	3	0.70
CC147657		0.22	<0.001	<0.2	0.52	<2	<10	20	<0.5	<2	0.01	<0.5	1	4	3	1.06
CC147658		0.28	<0.001	<0.2	0.73	<2	<10	30	<0.5	2	0.02	<0.5	1	4	3	1.20
CC147659		0.24	<0.001	<0.2	0.44	<2	<10	20	<0.5	3	0.03	<0.5	1	4	5	1.02
CC147660		0.28	<0.001	<0.2	0.78	<2	<10	30	<0.5	2	0.03	<0.5	1	6	3	1.54
CC147661		0.26	<0.001	<0.2	0.62	<2	<10	20	<0.5	<2	0.02	<0.5	1	5	2	1.48
CC147662		0.22	<0.001	<0.2	0.64	<2	<10	20	<0.5	3	0.02	<0.5	1	3	1	1.02
CC147663		0.22	<0.001	<0.2	1.65	<2	<10	20	<0.5	2	0.03	<0.5	1	5	1	1.58
CC147664		0.34	<0.001	<0.2	0.75	<2	<10	30	<0.5	3	0.03	0.5	1	4	2	1.25
CC147665		0.20	<0.001	<0.2	0.78	2	<10	20	<0.5	2	0.07	<0.5	1	6	5	1.38
CC147666		0.22	<0.001	<0.2	1.12	2	<10	30	<0.5	<2	0.02	<0.5	2	7	5	2.18
CC147667		0.24	<0.001	<0.2	0.38	<2	<10	30	<0.5	<2	0.03	<0.5	1	6	5	0.71
CC147668		0.22	0.008	<0.2	0.95	<2	<10	30	<0.5	2	0.02	<0.5	1	8	3	1.42
CC147669		0.22	<0.001	0.4	0.63	<2	<10	20	<0.5	<2	0.02	<0.5	1	3	2	0.86
CC147670		0.24	0.003	<0.2	1.37	3	<10	30	<0.5	2	0.03	<0.5	2	9	5	2.85
CC147671		0.22	<0.001	<0.2	0.61	2	<10	20	<0.5	<2	0.02	<0.5	1	4	2	1.14
CC147672		0.16	<0.001	<0.2	0.49	<2	<10	20	<0.5	2	0.03	<0.5	1	5	2	0.68
CC147673		0.22	<0.001	<0.2	1.56	<2	<10	20	0.6	<2	0.08	<0.5	2	5	3	1.48
CC147674		0.22	<0.001	0.3	0.97	2	<10	20	<0.5	2	0.02	<0.5	1	4	3	2.37
CC147675		0.32	<0.001	0.2	2.20	2	<10	90	1.5	<2	0.04	<0.5	5	12	18	3.07
CC147676		0.18	<0.001	0.2	1.18	2	<10	30	0.5	<2	0.06	<0.5	2	6	7	1.93
CC147677		0.22	<0.001	<0.2	1.01	2	<10	30	<0.5	2	0.04	<0.5	2	7	5	2.02
CC147678		0.28	0.001	0.2	1.45	3	<10	30	<0.5	2	0.02	<0.5	1	4	5	2.83
CC147679		0.28	0.001	<0.2	1.04	<2	<10	40	<0.5	2	0.03	<0.5	2	6	9	1.84
CC147680		0.24	0.001	<0.2	0.53	<2	<10	20	<0.5	2	0.01	<0.5	1	2	3	1.05



ALS Canada Ltd.
 2103 Dollarton Hwy
 North Vancouver BC V7H 0A7
 Phone: 604 984 0221 Fax: 604 984 0218 www.alsglobal.com

To: ARCHER, CATHRO AND ASSOCIATES (1981)
 LIMITED
 1016- 510 W HASTINGS ST
 VANCOUVER BC V6B 1L8

Page: 3 - B
 Total # Pages: 6 (A - C)
 Plus Appendix Pages
 Finalized Date: 16- SEP- 2011
 Account: F

Project: WLV - Andy

CERTIFICATE OF ANALYSIS WH11141108

Sample Description	Method Analyte Units LOR	ME- ICP41	ME- ICP41	ME- ICP41	ME- ICP41	ME- ICP41	ME- ICP41	ME- ICP41	ME- ICP41	ME- ICP41	ME- ICP41	ME- ICP41	ME- ICP41	ME- ICP41	ME- ICP41	
		Ga ppm	Hg ppm	K %	La ppm	Mg %	Mn ppm	Mo ppm	Na %	Ni ppm	P ppm	Pb ppm	S %	Sb ppm	Sc ppm	Sr ppm
CC147641		10	<1	0.03	10	0.05	114	9	0.01	4	130	7	0.01	<2	1	4
CC147642		<10	<1	0.03	<10	0.02	18	<1	0.03	3	330	3	0.03	<2	<1	10
CC147643		10	<1	0.11	10	0.18	194	1	0.01	3	320	20	0.02	<2	2	4
CC147644		<10	<1	0.03	10	0.02	30	<1	0.02	1	120	3	0.01	<2	<1	5
CC147645		10	<1	0.05	10	0.07	87	<1	0.01	1	240	5	0.01	<2	1	5
CC147646		10	<1	0.08	20	0.22	751	<1	0.01	2	680	111	0.02	<2	1	12
CC147647		10	<1	0.05	10	0.07	120	1	0.01	1	190	11	0.01	<2	1	5
CC147648		10	<1	0.03	10	0.02	47	1	0.01	<1	90	6	0.01	<2	<1	4
CC147649		<10	<1	0.07	20	0.07	145	3	0.03	1	300	22	0.03	<2	1	18
CC147650		<10	<1	0.05	10	0.04	54	2	0.02	1	410	18	0.03	<2	<1	6
CC147651		10	<1	0.05	10	0.16	166	6	0.02	3	320	19	0.03	<2	1	5
CC147652		10	1	0.03	10	0.07	79	4	0.01	1	230	13	0.02	<2	1	5
CC147653		10	<1	0.04	20	0.08	106	4	0.01	3	260	13	0.01	<2	1	4
CC147654		10	1	0.08	10	0.23	240	13	0.01	4	380	15	0.03	<2	2	7
CC147655		10	<1	0.04	10	0.07	127	8	0.01	1	150	6	0.01	<2	1	4
CC147656		10	<1	0.03	10	0.02	48	32	0.02	1	120	3	0.01	<2	<1	4
CC147657		10	<1	0.04	10	0.04	92	5	0.01	1	120	5	0.01	<2	1	4
CC147658		10	<1	0.03	10	0.05	69	2	0.01	1	160	8	0.01	<2	1	4
CC147659		10	<1	0.04	10	0.04	104	10	0.01	2	170	5	0.01	<2	1	5
CC147660		10	<1	0.04	10	0.10	110	1	0.01	2	230	7	0.01	<2	1	5
CC147661		10	1	0.03	10	0.06	95	2	0.01	<1	240	7	0.01	<2	1	4
CC147662		10	<1	0.04	10	0.08	124	1	0.02	<1	180	5	0.02	<2	1	4
CC147663		10	<1	0.03	10	0.09	108	<1	0.01	1	260	10	0.02	<2	1	3
CC147664		10	1	0.04	10	0.07	113	2	0.01	1	180	6	0.01	<2	1	4
CC147665		10	<1	0.04	20	0.08	185	2	0.02	4	180	11	0.02	<2	1	7
CC147666		10	<1	0.05	10	0.14	139	2	0.02	4	410	9	0.02	<2	1	6
CC147667		10	<1	0.03	10	0.04	33	1	0.03	3	200	5	0.02	<2	<1	6
CC147668		10	<1	0.04	10	0.09	90	1	0.02	3	170	8	0.02	<2	1	6
CC147669		10	<1	0.03	10	0.03	55	1	0.02	2	90	8	0.02	<2	1	5
CC147670		20	<1	0.05	10	0.21	183	4	0.02	5	260	12	0.02	<2	2	6
CC147671		10	<1	0.05	20	0.05	79	7	0.02	2	120	8	0.02	<2	1	5
CC147672		10	<1	0.04	10	0.08	80	1	0.03	2	120	5	0.02	<2	1	6
CC147673		<10	<1	0.06	10	0.12	256	2	0.02	2	450	22	0.03	<2	1	5
CC147674		10	<1	0.04	10	0.05	136	4	0.02	2	240	27	0.02	<2	1	5
CC147675		10	<1	0.15	30	0.27	915	51	0.02	6	350	53	0.03	<2	3	10
CC147676		10	<1	0.04	10	0.15	167	7	0.02	4	310	21	0.03	<2	1	7
CC147677		10	<1	0.06	20	0.16	219	6	0.02	4	190	11	0.03	<2	2	7
CC147678		20	<1	0.05	10	0.12	233	14	0.02	2	350	17	0.03	<2	2	5
CC147679		10	<1	0.08	20	0.11	205	21	0.02	3	210	35	0.03	<2	1	7
CC147680		10	<1	0.04	20	0.03	77	27	0.02	1	120	8	0.02	<2	1	5



ALS Canada Ltd.
 2103 Dollarton Hwy
 North Vancouver BC V7H 0A7
 Phone: 604 984 0221 Fax: 604 984 0218 www.alsglobal.com

To: ARCHER, CATHRO AND ASSOCIATES (1981)
 LIMITED
 1016- 510 W HASTINGS ST
 VANCOUVER BC V6B 1L8

Page: 3 - C
 Total # Pages: 6 (A - C)
 Plus Appendix Pages
 Finalized Date: 16- SEP- 2011
 Account: F

Project: WLV - Andy

CERTIFICATE OF ANALYSIS WH11141108

Sample Description	Method Analyte Units LOR	ME- ICP41	ME- ICP41	ME- ICP41	ME- ICP41	ME- ICP41	ME- ICP41	ME- ICP41
		Th	Ti	Tl	U	V	W	Zn
		ppm	%	ppm	ppm	ppm	ppm	ppm
		20	0.01	10	10	1	10	2
CC147641		<20	0.04	<10	<10	24	<10	27
CC147642		<20	0.01	<10	<10	5	<10	8
CC147643		<20	0.04	<10	<10	25	<10	38
CC147644		<20	0.02	<10	<10	7	<10	5
CC147645		<20	0.06	<10	<10	29	<10	19
CC147646		<20	0.02	<10	<10	13	10	244
CC147647		<20	0.07	<10	<10	36	<10	34
CC147648		<20	0.02	<10	<10	13	<10	9
CC147649		<20	0.02	<10	<10	10	<10	31
CC147650		<20	0.02	<10	<10	9	<10	16
CC147651		<20	0.04	<10	<10	31	<10	28
CC147652		<20	0.04	<10	<10	34	<10	18
CC147653		<20	0.05	<10	<10	53	<10	25
CC147654		<20	0.08	<10	<10	55	10	50
CC147655		<20	0.04	<10	<10	35	<10	26
CC147656		<20	0.02	<10	<10	17	<10	17
CC147657		<20	0.06	<10	<10	44	<10	23
CC147658		<20	0.04	<10	<10	37	10	15
CC147659		<20	0.04	<10	<10	27	<10	23
CC147660		<20	0.08	<10	<10	48	<10	21
CC147661		<20	0.05	<10	<10	44	<10	16
CC147662		<20	0.03	<10	<10	18	<10	17
CC147663		<20	0.03	<10	<10	18	<10	20
CC147664		<20	0.05	<10	<10	33	<10	19
CC147665		<20	0.07	<10	<10	46	<10	31
CC147666		<20	0.07	<10	<10	52	<10	26
CC147667		<20	0.04	<10	<10	39	<10	13
CC147668		<20	0.05	<10	<10	41	<10	19
CC147669		<20	0.03	<10	<10	15	<10	10
CC147670		<20	0.10	<10	<10	65	<10	39
CC147671		<20	0.09	<10	<10	49	<10	14
CC147672		<20	0.04	<10	<10	13	<10	14
CC147673		<20	0.03	<10	<10	15	<10	47
CC147674		<20	0.03	<10	<10	22	<10	24
CC147675		<20	0.03	<10	10	34	<10	144
CC147676		<20	0.03	<10	<10	19	<10	41
CC147677		<20	0.05	<10	<10	35	<10	34
CC147678		<20	0.06	<10	<10	44	10	38
CC147679		<20	0.03	<10	<10	24	<10	60
CC147680		<20	0.04	<10	<10	30	<10	19



ALS Canada Ltd.
 2103 Dollarton Hwy
 North Vancouver BC V7H 0A7
 Phone: 604 984 0221 Fax: 604 984 0218 www.alsglobal.com

To: ARCHER, CATHRO AND ASSOCIATES (1981)
 LIMITED
 1016- 510 W HASTINGS ST
 VANCOUVER BC V6B 1L8

Page: 4 - A
 Total # Pages: 6 (A - C)
 Plus Appendix Pages
 Finalized Date: 16- SEP- 2011
 Account: F

Project: WLV - Andy

CERTIFICATE OF ANALYSIS WH11141108

Sample Description	Method Analyte Units LOR	WEI- 21	Au- ICP21	ME- ICP41	ME- ICP41	ME- ICP41	ME- ICP41	ME- ICP41	ME- ICP41	ME- ICP41	ME- ICP41	ME- ICP41	ME- ICP41	ME- ICP41	ME- ICP41	ME- ICP41
		Recvd Wt. kg	Au ppm	Ag ppm	Al %	As ppm	B ppm	Ba ppm	Be ppm	Bi ppm	Ca %	Cd ppm	Co ppm	Cr ppm	Cu ppm	Fe %
		0.02	0.001	0.2	0.01	2	10	10	0.5	2	0.01	0.5	1	1	1	0.01
CC147681		0.24	0.002	<0.2	0.77	<2	<10	30	<0.5	2	0.01	<0.5	1	2	2	1.68
CC147682		0.16	0.001	<0.2	0.65	2	<10	20	<0.5	2	0.01	<0.5	1	3	3	1.40
CC147683		0.24	0.001	<0.2	0.83	<2	<10	20	<0.5	<2	0.02	<0.5	1	2	2	1.85
CC147684		0.20	0.001	<0.2	1.11	<2	<10	40	<0.5	3	0.02	<0.5	2	5	5	2.01
CC147685		0.26	0.001	<0.2	0.81	<2	<10	20	<0.5	2	0.02	<0.5	1	3	3	1.52
CC147686		0.20	0.001	<0.2	1.10	<2	<10	20	<0.5	2	0.02	<0.5	1	3	4	1.59
CC147687		0.22	0.001	<0.2	0.93	<2	<10	30	<0.5	2	0.02	<0.5	1	2	5	1.05
CC147688		0.24	0.003	<0.2	0.67	<2	<10	30	<0.5	2	0.01	<0.5	1	2	3	1.29
CC147689		0.22	0.003	<0.2	3.53	2	<10	20	1.1	<2	0.05	<0.5	3	5	6	1.61
CC147690		0.20	0.001	<0.2	0.91	2	<10	30	<0.5	2	0.02	<0.5	2	4	4	1.60
CC147691		0.24	0.002	<0.2	0.78	<2	<10	20	<0.5	2	0.02	<0.5	1	3	2	1.63
CC147692		0.18	0.002	<0.2	1.72	2	<10	30	<0.5	<2	0.02	<0.5	1	6	6	1.59
CC147693		0.20	0.002	<0.2	0.68	2	<10	30	<0.5	<2	0.01	<0.5	2	4	5	1.20
CC147694		0.42	0.002	<0.2	0.76	2	<10	20	<0.5	<2	0.02	<0.5	1	6	4	1.46
CC147695		0.18	0.004	<0.2	0.76	<2	<10	30	<0.5	2	0.02	<0.5	2	4	4	1.37
CC147696		0.22	0.001	0.2	1.87	3	<10	30	<0.5	3	0.02	<0.5	2	8	7	3.29
CC147697		0.28	0.001	<0.2	0.79	2	<10	20	<0.5	2	0.03	<0.5	1	4	4	1.36
CC147698		0.24	0.003	<0.2	1.55	<2	<10	80	0.7	<2	0.08	<0.5	3	14	10	1.84
CC147699		0.34	0.002	<0.2	2.05	3	<10	70	0.8	2	0.08	<0.5	8	16	15	2.29
CC147700		0.26	0.001	<0.2	1.38	2	<10	50	<0.5	<2	0.04	<0.5	3	13	6	1.81
CC147741		0.34	0.002	<0.2	1.43	<2	<10	30	<0.5	<2	0.02	<0.5	4	9	11	2.46
CC147742		0.34	0.003	<0.2	1.50	2	<10	40	0.5	<2	0.04	<0.5	5	12	12	3.07
CC147743		0.44	0.001	<0.2	0.87	<2	<10	40	<0.5	<2	0.03	<0.5	3	5	3	1.43
CC147744		0.46	0.002	<0.2	2.37	3	<10	80	0.8	<2	0.04	<0.5	8	20	16	2.77
CC147745		0.24	0.002	<0.2	1.16	<2	<10	40	0.7	<2	0.05	<0.5	4	8	9	1.26
CC147746		0.24	0.002	<0.2	1.01	<2	<10	30	<0.5	3	0.04	<0.5	3	8	7	1.59
CC147747		0.28	0.002	0.2	1.06	<2	<10	30	0.6	8	0.07	<0.5	4	5	13	1.56
CC147748		0.28	0.002	<0.2	1.48	<2	<10	40	1.0	10	0.13	<0.5	7	9	28	2.35
CC147749		0.34	0.003	0.4	1.62	3	<10	70	1.8	25	0.10	0.5	10	12	114	4.30
CC147750		0.38	0.002	<0.2	1.44	4	<10	40	1.2	5	0.11	0.8	7	10	23	2.16
CC147751		0.28	0.003	<0.2	0.85	<2	<10	40	<0.5	<2	0.02	<0.5	2	3	5	1.03
CC147752		0.36	0.001	<0.2	1.22	<2	<10	30	0.6	<2	0.06	<0.5	3	4	3	1.55
CC147753		0.42	0.002	<0.2	1.18	<2	<10	60	0.7	<2	0.06	<0.5	3	6	9	3.01
CC147754		0.44	0.002	0.3	1.61	9	<10	40	0.7	2	0.04	<0.5	2	4	18	2.54
CC147755		0.60	0.002	0.4	1.94	<2	<10	30	0.7	<2	0.04	<0.5	2	3	8	1.44
CC147756		0.34	0.001	0.2	1.81	<2	<10	40	0.8	2	0.03	<0.5	2	4	8	1.62
CC147757		0.60	0.001	<0.2	1.56	<2	<10	30	0.6	2	0.03	<0.5	1	3	6	1.61
CC147758		0.40	0.001	<0.2	1.51	<2	<10	30	0.7	2	0.05	<0.5	2	4	8	1.59
CC147759		0.44	0.001	0.2	1.18	<2	<10	20	0.5	<2	0.05	<0.5	3	3	3	1.13
CC147760		0.42	0.001	0.2	1.19	<2	<10	40	0.6	<2	0.03	<0.5	3	5	6	1.50



ALS Canada Ltd.
 2103 Dollarton Hwy
 North Vancouver BC V7H 0A7
 Phone: 604 984 0221 Fax: 604 984 0218 www.alsglobal.com

To: ARCHER, CATHRO AND ASSOCIATES (1981)
 LIMITED
 1016- 510 W HASTINGS ST
 VANCOUVER BC V6B 1L8

Page: 4 - B
 Total # Pages: 6 (A - C)
 Plus Appendix Pages
 Finalized Date: 16- SEP- 2011
 Account: F

Project: WLV - Andy

CERTIFICATE OF ANALYSIS WH11141108

Sample Description	Method Analyte Units LOR	ME- ICP41	ME- ICP41	ME- ICP41	ME- ICP41	ME- ICP41	ME- ICP41	ME- ICP41	ME- ICP41	ME- ICP41	ME- ICP41	ME- ICP41	ME- ICP41	ME- ICP41	ME- ICP41	
		Ga ppm	Hg ppm	K %	La ppm	Mg %	Mn ppm	Mo ppm	Na %	Ni ppm	P ppm	Pb ppm	S %	Sb ppm	Sc ppm	Sr ppm
		10	1	0.01	10	0.01	5	1	0.01	1	10	2	0.01	2	1	
CC147681		10	<1	0.05	10	0.06	121	12	0.02	2	120	6	0.02	<2	1	4
CC147682		10	<1	0.04	20	0.05	172	19	0.02	2	130	8	0.02	<2	1	5
CC147683		10	<1	0.04	10	0.11	185	6	0.02	1	160	8	0.02	<2	1	5
CC147684		10	<1	0.07	20	0.13	271	16	0.02	3	170	14	0.02	<2	2	5
CC147685		10	<1	0.04	10	0.08	185	11	0.02	1	120	7	0.02	<2	1	5
CC147686		10	<1	0.04	10	0.07	144	6	0.02	2	180	9	0.02	<2	1	5
CC147687		10	<1	0.04	10	0.04	62	4	0.03	2	190	7	0.03	<2	1	6
CC147688		10	<1	0.05	20	0.04	119	21	0.02	1	140	7	0.02	<2	1	5
CC147689		10	<1	0.03	10	0.08	495	3	0.02	2	460	25	0.04	<2	2	6
CC147690		10	<1	0.05	10	0.09	138	7	0.02	3	160	9	0.05	<2	1	5
CC147691		10	<1	0.06	20	0.08	154	9	0.02	2	110	7	0.02	<2	1	5
CC147692		10	<1	0.04	20	0.09	125	5	0.02	4	240	13	0.02	<2	1	6
CC147693		10	<1	0.03	20	0.05	78	4	0.02	3	170	5	0.02	<2	1	6
CC147694		10	<1	0.03	20	0.11	111	9	0.02	3	140	9	0.02	<2	1	6
CC147695		10	<1	0.04	10	0.07	117	4	0.02	2	150	7	0.02	<2	1	6
CC147696		20	<1	0.04	20	0.12	155	10	0.02	3	370	13	0.03	<2	2	5
CC147697		10	<1	0.03	20	0.03	101	9	0.02	2	160	9	0.02	<2	1	6
CC147698		10	<1	0.08	20	0.34	189	19	0.02	9	270	20	0.02	<2	3	9
CC147699		10	<1	0.10	20	0.40	357	2	0.02	12	280	25	0.02	<2	3	9
CC147700		10	<1	0.08	20	0.27	195	17	0.02	7	230	13	0.03	<2	2	8
CC147741		10	<1	0.05	20	0.14	211	6	0.01	6	260	14	0.01	<2	1	5
CC147742		10	<1	0.06	10	0.24	276	10	0.01	8	450	22	0.02	<2	2	7
CC147743		10	<1	0.06	20	0.17	281	14	0.01	3	110	11	<0.01	<2	2	4
CC147744		10	1	0.08	20	0.39	271	4	0.01	16	200	27	0.01	<2	3	8
CC147745		<10	<1	0.05	10	0.13	222	1	0.02	5	540	17	0.04	<2	<1	6
CC147746		10	<1	0.05	10	0.13	163	2	0.02	3	550	18	0.04	<2	<1	7
CC147747		<10	<1	0.05	10	0.14	369	1	0.02	3	760	25	0.04	<2	<1	6
CC147748		10	<1	0.09	20	0.27	1040	1	0.01	7	880	49	0.01	<2	2	6
CC147749		10	<1	0.13	30	0.27	1365	5	0.01	9	1710	110	0.11	2	3	15
CC147750		<10	<1	0.07	20	0.21	1515	1	0.01	9	950	90	0.02	<2	1	6
CC147751		10	<1	0.04	10	0.04	104	2	0.02	1	210	9	0.01	<2	1	5
CC147752		<10	<1	0.06	10	0.12	493	5	0.01	2	470	22	0.02	<2	1	4
CC147753		10	<1	0.08	20	0.13	291	11	0.01	3	500	43	0.03	<2	1	10
CC147754		10	<1	0.05	10	0.08	1010	16	0.03	1	440	120	0.03	<2	1	5
CC147755		<10	<1	0.05	10	0.10	407	2	0.03	1	290	40	0.01	<2	1	5
CC147756		10	<1	0.04	10	0.08	303	3	0.02	1	330	22	0.03	<2	1	6
CC147757		10	<1	0.05	10	0.10	241	3	0.03	<1	320	14	0.02	<2	1	5
CC147758		<10	<1	0.07	20	0.15	527	4	0.03	1	480	31	0.03	<2	1	5
CC147759		<10	<1	0.04	10	0.10	480	1	0.01	1	400	25	0.01	<2	1	3
CC147760		<10	<1	0.05	20	0.10	277	8	0.01	2	300	17	0.01	<2	1	3



ALS Canada Ltd.
 2103 Dollarton Hwy
 North Vancouver BC V7H 0A7
 Phone: 604 984 0221 Fax: 604 984 0218 www.alsglobal.com

To: ARCHER, CATHRO AND ASSOCIATES (1981)
 LIMITED
 1016- 510 W HASTINGS ST
 VANCOUVER BC V6B 1L8

Page: 4 - C
 Total # Pages: 6 (A - C)
 Plus Appendix Pages
 Finalized Date: 16- SEP- 2011
 Account: F

Project: WLV - Andy

CERTIFICATE OF ANALYSIS WH11141108

Sample Description	Method Analyte Units LOR	ME- ICP41	ME- ICP41	ME- ICP41	ME- ICP41	ME- ICP41	ME- ICP41	ME- ICP41
		Th ppm	Ti %	Tl ppm	U ppm	V ppm	W ppm	Zn ppm
		20	0.01	10	10	1	10	2
CC147681	<20	0.04	<10	<10	29	10	23	
CC147682	<20	0.05	<10	<10	25	<10	22	
CC147683	<20	0.07	<10	<10	35	10	21	
CC147684	<20	0.04	<10	<10	25	10	106	
CC147685	<20	0.05	<10	<10	29	30	32	
CC147686	<20	0.05	<10	10	28	10	19	
CC147687	<20	0.03	<10	<10	19	<10	12	
CC147688	<20	0.05	<10	<10	33	10	21	
CC147689	<20	0.03	<10	<10	13	<10	29	
CC147690	<20	0.04	<10	<10	26	<10	30	
CC147691	<20	0.05	<10	<10	29	10	28	
CC147692	<20	0.04	<10	<10	28	<10	32	
CC147693	<20	0.04	<10	<10	27	<10	19	
CC147694	<20	0.06	<10	<10	40	<10	19	
CC147695	<20	0.04	<10	<10	33	<10	20	
CC147696	<20	0.08	<10	<10	69	10	26	
CC147697	<20	0.05	<10	<10	41	<10	16	
CC147698	<20	0.05	<10	<10	28	<10	55	
CC147699	<20	0.06	<10	<10	30	<10	71	
CC147700	<20	0.06	<10	<10	36	<10	41	
CC147741	<20	0.05	<10	<10	39	<10	52	
CC147742	<20	0.05	<10	<10	43	10	76	
CC147743	<20	0.03	<10	<10	20	<10	53	
CC147744	<20	0.05	<10	<10	34	<10	94	
CC147745	<20	0.02	<10	<10	17	<10	42	
CC147746	<20	0.02	<10	<10	21	<10	41	
CC147747	<20	0.02	<10	<10	15	<10	49	
CC147748	<20	0.03	<10	<10	18	<10	203	
CC147749	<20	0.03	<10	30	23	10	221	
CC147750	<20	0.02	<10	<10	17	<10	242	
CC147751	<20	0.02	<10	<10	18	<10	18	
CC147752	<20	0.02	<10	<10	13	<10	39	
CC147753	<20	0.04	<10	<10	29	<10	54	
CC147754	<20	0.02	<10	<10	16	<10	53	
CC147755	<20	0.01	<10	<10	10	<10	53	
CC147756	<20	0.02	<10	<10	16	<10	34	
CC147757	<20	0.03	<10	<10	17	<10	41	
CC147758	<20	0.02	<10	<10	14	<10	61	
CC147759	<20	0.02	<10	<10	10	<10	45	
CC147760	<20	0.03	<10	<10	16	<10	39	



ALS Canada Ltd.
 2103 Dollarton Hwy
 North Vancouver BC V7H 0A7
 Phone: 604 984 0221 Fax: 604 984 0218 www.alsglobal.com

To: ARCHER, CATHRO AND ASSOCIATES (1981)
 LIMITED
 1016- 510 W HASTINGS ST
 VANCOUVER BC V6B 1L8

Page: 5 - A
 Total # Pages: 6 (A - C)
 Plus Appendix Pages
 Finalized Date: 16- SEP- 2011
 Account: F

Project: WLV - Andy

CERTIFICATE OF ANALYSIS WH11141108

Sample Description	Method Analyte Units LOR	WEI- 21	Au- ICP21	ME- ICP41	ME- ICP41	ME- ICP41	ME- ICP41	ME- ICP41	ME- ICP41	ME- ICP41	ME- ICP41	ME- ICP41	ME- ICP41	ME- ICP41	ME- ICP41	ME- ICP41
		Recvd Wt. kg	Au ppm	Ag ppm	Al %	As ppm	B ppm	Ba ppm	Be ppm	Bi ppm	Ca %	Cd ppm	Co ppm	Cr ppm	Cu ppm	Fe %
		0.02	0.001	0.2	0.01	2	10	10	0.5	2	0.01	0.5	1	1	1	0.01
CC147761		0.44	0.001	<0.2	0.79	<2	<10	30	<0.5	<2	0.02	<0.5	2	3	6	1.00
CC147762		0.34	0.002	<0.2	1.28	<2	<10	50	0.5	<2	0.03	<0.5	3	5	7	2.48
CC147763		0.34	0.002	<0.2	1.85	<2	<10	120	2.0	<2	0.16	<0.5	5	8	25	2.06
CC147764		0.48	0.001	<0.2	1.45	<2	<10	30	0.5	<2	0.02	<0.5	3	4	8	2.02
CC147765		0.46	0.003	<0.2	1.63	<2	<10	70	0.5	<2	0.02	<0.5	3	5	8	2.20
CC147766		0.40	0.002	0.2	2.02	<2	<10	30	0.7	<2	0.04	<0.5	3	4	5	1.49
CC147767		0.32	0.001	<0.2	0.68	<2	<10	30	<0.5	<2	0.01	<0.5	2	2	4	0.71
CC147768		0.40	0.001	<0.2	1.05	<2	<10	40	<0.5	<2	0.03	<0.5	2	3	3	2.30
CC147769		0.36	0.003	<0.2	1.10	<2	<10	40	<0.5	<2	0.02	<0.5	3	6	7	2.30
CC147770		0.38	0.001	<0.2	2.16	<2	<10	40	0.6	<2	0.02	<0.5	3	5	4	2.35
CC147771		0.42	0.002	0.3	1.09	<2	<10	40	0.5	<2	0.03	<0.5	3	4	7	1.50
CC147772		0.68	0.001	0.2	1.15	<2	<10	40	0.7	<2	0.16	<0.5	4	7	8	2.23
CC147773		0.32	0.001	0.2	1.09	<2	<10	30	<0.5	<2	0.03	<0.5	3	9	7	2.44
CC147774		0.38	0.003	<0.2	2.20	5	<10	60	0.8	<2	0.14	<0.5	7	25	17	3.74
CC147775		0.30	0.006	0.2	1.58	<2	<10	40	0.5	<2	0.02	<0.5	4	9	11	1.87
CC147776		0.28	0.004	<0.2	1.31	<2	<10	30	<0.5	<2	0.02	<0.5	3	7	8	2.12
CC147777		0.46	0.001	0.2	2.13	2	<10	60	1.2	<2	0.04	<0.5	5	9	14	2.70
CC147778		0.42	0.001	0.2	2.27	2	<10	40	1.0	<2	0.05	0.8	5	10	14	2.77
CC147779		0.52	0.001	<0.2	1.07	<2	<10	30	<0.5	<2	0.02	<0.5	4	9	8	2.24
CC147780		0.40	0.001	0.3	1.48	<2	<10	30	<0.5	2	0.03	<0.5	4	8	7	2.43
CC149451		0.22	0.001	<0.2	1.19	<2	<10	110	0.6	<2	0.23	<0.5	4	11	10	1.50
CC149452		0.20	0.001	<0.2	1.27	<2	<10	60	<0.5	<2	0.05	<0.5	3	12	6	1.34
CC149453		0.28	0.001	<0.2	0.72	<2	<10	20	<0.5	<2	0.01	<0.5	2	3	4	1.00
CC149454		0.24	0.002	<0.2	1.35	<2	<10	50	<0.5	<2	0.03	<0.5	3	11	6	2.36
CC149455		0.20	0.002	<0.2	0.70	<2	<10	40	<0.5	<2	0.04	<0.5	2	5	5	1.32
CC149456		0.36	0.002	<0.2	1.99	2	<10	60	0.6	<2	0.06	<0.5	5	17	10	2.38
CC149457		0.26	0.001	0.2	1.03	<2	<10	40	<0.5	<2	0.03	<0.5	3	9	6	1.95
CC149458		0.18	0.001	0.2	1.01	<2	<10	30	<0.5	<2	0.03	<0.5	3	8	4	1.68
CC149459		0.28	0.002	<0.2	1.52	<2	<10	50	<0.5	<2	0.03	<0.5	4	13	7	2.30
CC149460		0.18	0.003	0.4	1.08	<2	<10	20	<0.5	<2	0.03	<0.5	2	3	3	1.77
CC149461		0.26	0.001	<0.2	3.32	<2	<10	60	0.8	<2	0.03	<0.5	4	16	9	3.12
CC149462		0.36	0.002	<0.2	1.51	<2	<10	40	<0.5	<2	0.03	<0.5	4	15	6	3.40
CC149463		0.44	0.002	0.3	2.54	<2	<10	100	0.9	<2	0.05	<0.5	8	20	14	2.69
CC149464		0.20	0.001	0.2	2.39	<2	<10	50	0.9	4	0.03	<0.5	3	6	8	3.29
CC149465		0.24	0.001	<0.2	1.40	<2	<10	40	0.5	<2	0.03	<0.5	3	4	5	2.90
CC149466		0.26	<0.001	0.2	1.32	<2	<10	20	0.5	2	0.08	<0.5	3	4	7	1.96
CC149467		0.30	0.001	<0.2	0.87	<2	<10	20	<0.5	<2	0.03	<0.5	3	8	5	1.93
CC149468		0.38	0.001	<0.2	0.45	<2	<10	20	<0.5	<2	0.02	<0.5	<1	2	4	0.13
CC149469		0.40	0.002	<0.2	1.87	<2	<10	80	0.6	<2	0.07	<0.5	6	19	10	2.38
CC149470		0.30	0.002	<0.2	1.63	<2	<10	50	<0.5	<2	0.04	<0.5	5	17	10	2.74



ALS Canada Ltd.
 2103 Dollarton Hwy
 North Vancouver BC V7H 0A7
 Phone: 604 984 0221 Fax: 604 984 0218 www.alsglobal.com

To: ARCHER, CATHRO AND ASSOCIATES (1981)
 LIMITED
 1016- 510 W HASTINGS ST
 VANCOUVER BC V6B 1L8

Page: 5 - B
 Total # Pages: 6 (A - C)
 Plus Appendix Pages
 Finalized Date: 16- SEP- 2011
 Account: F

Project: WLV - Andy

CERTIFICATE OF ANALYSIS WH11141108

Sample Description	Method Analyte Units LOR	ME- ICP41	ME- ICP41	ME- ICP41	ME- ICP41	ME- ICP41	ME- ICP41	ME- ICP41	ME- ICP41	ME- ICP41	ME- ICP41	ME- ICP41	ME- ICP41	ME- ICP41	ME- ICP41	
		Ga ppm	Hg ppm	K %	La ppm	Mg %	Mn ppm	Mo ppm	Na %	Ni ppm	P ppm	Pb ppm	S %	Sb ppm	Sc ppm	Sr ppm
		10	1	0.01	10	0.01	5	1	0.01	1	10	2	0.01	2	1	1
CC147761		10	<1	0.03	10	0.04	83	4	0.02	1	220	8	0.01	<2	<1	4
CC147762		10	<1	0.05	20	0.07	250	29	0.01	3	200	24	0.01	<2	1	5
CC147763		10	<1	0.12	60	0.24	790	16	0.02	4	460	40	0.02	<2	2	16
CC147764		10	<1	0.05	10	0.09	400	8	0.01	1	510	41	0.02	<2	1	3
CC147765		10	<1	0.10	30	0.14	330	11	0.01	2	250	34	0.01	<2	2	4
CC147766		<10	<1	0.05	10	0.09	501	3	0.01	1	570	31	0.02	<2	1	3
CC147767		10	<1	0.04	10	0.04	89	3	0.01	<1	250	9	0.01	<2	1	3
CC147768		10	<1	0.07	10	0.10	237	6	0.01	1	270	12	0.02	<2	1	5
CC147769		10	<1	0.09	20	0.15	575	13	0.01	3	300	25	0.01	<2	1	5
CC147770		10	<1	0.08	20	0.10	402	8	0.01	1	320	17	0.02	<2	1	4
CC147771		10	<1	0.06	10	0.11	263	4	0.01	2	460	22	0.02	<2	1	4
CC147772		10	<1	0.06	10	0.19	831	5	0.01	5	430	18	0.02	<2	1	8
CC147773		10	<1	0.07	10	0.19	305	5	0.01	5	380	13	0.01	<2	1	5
CC147774		10	<1	0.07	20	0.38	271	4	0.01	17	560	22	0.02	<2	2	14
CC147775		10	<1	0.05	20	0.09	251	6	0.01	6	420	14	0.01	<2	1	6
CC147776		10	<1	0.06	10	0.14	355	4	0.01	4	270	12	0.01	<2	1	5
CC147777		10	1	0.06	20	0.18	410	7	0.01	6	530	24	0.02	<2	2	6
CC147778		10	<1	0.06	10	0.19	722	14	0.01	7	760	39	0.03	<2	2	6
CC147779		10	1	0.04	10	0.17	189	7	0.01	6	320	14	0.01	<2	1	5
CC147780		10	<1	0.06	10	0.17	351	4	0.01	3	440	28	0.01	<2	1	4
CC149451		10	<1	0.09	20	0.22	192	32	0.01	6	260	16	0.02	<2	2	21
CC149452		10	<1	0.06	20	0.24	132	17	0.01	6	270	11	0.02	<2	2	9
CC149453		10	<1	0.03	20	0.03	58	20	0.01	2	120	8	<0.01	<2	1	3
CC149454		10	<1	0.07	10	0.22	195	79	0.01	5	140	18	0.01	<2	2	5
CC149455		<10	<1	0.05	20	0.13	211	14	0.01	2	410	19	0.03	<2	1	4
CC149456		10	<1	0.09	20	0.33	222	2	0.01	10	360	19	0.01	<2	3	6
CC149457		10	<1	0.07	10	0.16	141	7	0.01	4	200	9	0.01	<2	2	5
CC149458		10	<1	0.08	10	0.20	190	24	0.01	3	330	9	0.01	<2	2	5
CC149459		10	<1	0.06	20	0.27	167	3	0.01	7	170	14	0.01	<2	2	6
CC149460		10	<1	0.05	10	0.08	153	2	0.01	1	430	11	0.01	<2	1	4
CC149461		10	1	0.09	10	0.23	189	1	0.01	6	410	20	0.02	<2	3	4
CC149462		10	<1	0.08	20	0.23	201	1	0.01	6	700	16	0.01	<2	2	5
CC149463		10	<1	0.11	20	0.45	316	<1	0.01	15	290	24	0.01	<2	4	7
CC149464		10	<1	0.07	20	0.17	362	5	0.01	1	470	45	0.01	<2	2	5
CC149465		10	<1	0.09	20	0.16	276	3	0.01	1	360	20	0.01	<2	2	5
CC149466		10	<1	0.06	10	0.20	317	2	0.01	1	360	46	0.01	<2	2	4
CC149467		10	<1	0.05	20	0.14	120	1	0.01	4	570	14	0.01	<2	1	5
CC149468		10	<1	0.02	20	0.02	11	<1	0.03	<1	160	5	0.01	<2	<1	6
CC149469		10	<1	0.11	20	0.36	211	1	0.01	11	330	19	0.01	<2	3	8
CC149470		10	<1	0.07	20	0.32	193	3	0.01	10	230	18	0.01	<2	2	7



ALS Canada Ltd.
 2103 Dollarton Hwy
 North Vancouver BC V7H 0A7
 Phone: 604 984 0221 Fax: 604 984 0218 www.alsglobal.com

To: ARCHER, CATHRO AND ASSOCIATES (1981)
 LIMITED
 1016- 510 W HASTINGS ST
 VANCOUVER BC V6B 1L8

Page: 5 - C
 Total # Pages: 6 (A - C)
 Plus Appendix Pages
 Finalized Date: 16- SEP- 2011
 Account: F

Project: WLV - Andy

CERTIFICATE OF ANALYSIS WH11141108

Sample Description	Method Analyte Units LOR	ME- ICP41	ME- ICP41	ME- ICP41	ME- ICP41	ME- ICP41	ME- ICP41	ME- ICP41
		Th	Ti	Tl	U	V	W	Zn
		ppm	%	ppm	ppm	ppm	ppm	ppm
		20	0.01	10	10	1	10	2
CC147761		<20	0.02	<10	<10	14	<10	16
CC147762		<20	0.04	<10	<10	36	10	79
CC147763		<20	0.02	<10	<10	21	<10	170
CC147764		<20	0.03	<10	<10	16	<10	47
CC147765		<20	0.02	<10	<10	22	<10	70
CC147766		<20	0.02	<10	<10	13	<10	60
CC147767		<20	0.02	<10	<10	11	<10	19
CC147768		<20	0.03	<10	<10	22	<10	41
CC147769		<20	0.03	<10	<10	27	<10	88
CC147770		<20	0.04	<10	<10	24	<10	50
CC147771		<20	0.02	<10	<10	16	<10	47
CC147772		<20	0.03	<10	<10	21	<10	84
CC147773		<20	0.06	<10	<10	37	<10	47
CC147774		<20	0.05	<10	<10	41	<10	73
CC147775		<20	0.03	<10	<10	33	<10	42
CC147776		<20	0.05	<10	<10	29	<10	37
CC147777		<20	0.05	<10	<10	35	<10	69
CC147778		<20	0.05	<10	<10	36	<10	136
CC147779		<20	0.06	<10	<10	44	<10	48
CC147780		<20	0.03	<10	<10	28	<10	49
CC149451		<20	0.04	<10	<10	25	<10	75
CC149452		<20	0.05	<10	<10	23	<10	36
CC149453		<20	0.06	<10	<10	50	<10	16
CC149454		<20	0.06	<10	<10	46	<10	80
CC149455		<20	0.02	<10	<10	15	<10	44
CC149456		<20	0.06	<10	<10	32	<10	50
CC149457		<20	0.06	<10	<10	42	<10	33
CC149458		<20	0.06	<10	<10	37	<10	44
CC149459		<20	0.06	<10	<10	38	<10	36
CC149460		<20	0.04	<10	<10	23	<10	23
CC149461		<20	0.07	<10	<10	42	<10	46
CC149462		<20	0.07	<10	<10	50	<10	44
CC149463		<20	0.07	<10	<10	37	<10	69
CC149464		<20	0.03	<10	<10	36	<10	81
CC149465		<20	0.04	<10	<10	43	<10	72
CC149466		<20	0.02	<10	<10	18	<10	78
CC149467		<20	0.07	<10	<10	58	<10	28
CC149468		<20	0.01	<10	<10	9	<10	5
CC149469		<20	0.06	<10	<10	36	<10	57
CC149470		<20	0.08	<10	<10	80	<10	50



ALS Canada Ltd.
 2103 Dollarton Hwy
 North Vancouver BC V7H 0A7
 Phone: 604 984 0221 Fax: 604 984 0218 www.alsglobal.com

To: ARCHER, CATHRO AND ASSOCIATES (1981)
 LIMITED
 1016- 510 W HASTINGS ST
 VANCOUVER BC V6B 1L8

Page: 6 - A
 Total # Pages: 6 (A - C)
 Plus Appendix Pages
 Finalized Date: 16- SEP- 2011
 Account: F

Project: WLV - Andy

CERTIFICATE OF ANALYSIS WH11141108

Sample Description	Method Analyte Units LOR	WEI- 21	Au- ICP21	ME- ICP41	ME- ICP41	ME- ICP41	ME- ICP41	ME- ICP41	ME- ICP41	ME- ICP41	ME- ICP41	ME- ICP41	ME- ICP41	ME- ICP41	ME- ICP41	
		Recvd Wt. kg	Au ppm	Ag ppm	Al %	As ppm	B ppm	Ba ppm	Be ppm	Bi ppm	Ca %	Cd ppm	Co ppm	Cr ppm	Cu ppm	Fe %
		0.02	0.001	0.2	0.01	2	10	10	0.5	2	0.01	0.5	1	1	1	0.01
CC149301		0.40	0.001	<0.2	1.52	2	<10	30	0.7	4	0.10	<0.5	7	11	25	2.07
CC149302		0.36	0.001	0.3	1.38	2	<10	40	1.3	3	0.13	0.8	6	7	28	1.77
CC149303		0.36	0.001	0.5	1.49	<2	<10	30	1.5	3	0.10	<0.5	5	6	13	1.51
CC149304		0.32	0.001	0.2	1.69	3	<10	50	2.3	9	0.21	0.8	9	14	23	2.92
CC149305		0.36	0.003	0.5	1.93	2	<10	70	1.8	4	0.16	1.9	9	19	26	2.79
CC149306		0.40	0.002	3.1	2.04	35	<10	70	3.2	26	0.36	8.2	26	27	113	5.52
CC149307		0.42	0.001	1.4	1.62	4	<10	50	2.2	5	0.24	2.1	12	17	59	2.51
CC149308		0.36	0.002	0.9	1.90	21	<10	80	2.7	5	0.21	2.1	13	26	68	4.21
CC149251		0.18	0.001	<0.2	0.48	<2	<10	30	<0.5	<2	0.07	<0.5	2	3	4	0.39
CC149252		0.16	<0.001	<0.2	0.84	<2	<10	30	<0.5	<2	0.03	<0.5	2	2	3	1.44
CC149253		0.20	0.001	<0.2	0.97	<2	<10	30	<0.5	<2	0.03	<0.5	2	3	2	2.31
CC149254		0.16	0.001	<0.2	0.67	<2	<10	20	<0.5	<2	0.03	<0.5	2	4	2	1.75
CC149255		0.16	0.001	<0.2	0.65	<2	<10	30	<0.5	<2	0.04	<0.5	3	3	6	1.13
CC149256		0.18	0.001	0.2	0.68	<2	<10	20	<0.5	<2	0.03	<0.5	2	4	3	1.76
CC149257		0.16	0.001	<0.2	0.87	<2	<10	30	<0.5	<2	0.03	<0.5	2	5	3	1.61
CC149258		0.18	0.002	<0.2	0.30	<2	<10	30	<0.5	<2	0.03	<0.5	2	2	6	0.27
CC149259		0.36	0.001	<0.2	1.27	<2	<10	30	0.5	<2	0.04	<0.5	3	6	6	2.39
CC149260		0.22	0.001	<0.2	1.25	<2	<10	50	0.7	<2	0.06	<0.5	3	6	6	2.19
CC147581		0.20	0.001	<0.2	1.25	<2	<10	30	0.9	8	0.25	0.5	5	6	21	2.12
CC147582		0.20	0.003	<0.2	2.01	<2	<10	50	0.6	2	0.08	<0.5	3	8	4	2.71
CC147583		0.22	0.001	<0.2	0.61	<2	<10	20	<0.5	<2	0.02	<0.5	2	2	3	0.55
CC147584		0.16	0.005	0.4	0.91	<2	<10	30	1.6	5	0.55	1.9	4	3	15	1.49
CC147585		0.20	0.001	<0.2	0.61	<2	<10	20	<0.5	<2	0.03	<0.5	2	2	3	0.38
CC147586		0.16	0.001	<0.2	1.27	<2	<10	30	0.9	2	0.08	<0.5	4	7	6	2.05
CC147587		0.26	0.001	<0.2	3.71	<2	<10	30	1.2	<2	0.06	<0.5	3	10	3	2.27
CC147588		0.20	0.001	<0.2	1.17	<2	<10	30	<0.5	<2	0.05	<0.5	3	5	3	1.43
CC149471		0.22	0.002	<0.2	1.31	<2	<10	50	<0.5	<2	0.04	<0.5	4	12	5	1.84
CC149472		0.20	0.001	0.2	0.64	<2	<10	20	<0.5	<2	0.01	<0.5	2	5	3	1.27
CC149473		0.20	0.001	<0.2	1.07	<2	<10	40	<0.5	<2	0.03	<0.5	3	9	4	1.65
CC149474		0.22	0.001	<0.2	0.99	<2	<10	60	0.5	<2	0.10	<0.5	5	11	7	1.45

***** See Appendix Page for comments regarding this certificate *****



ALS Canada Ltd.
 2103 Dollarton Hwy
 North Vancouver BC V7H 0A7
 Phone: 604 984 0221 Fax: 604 984 0218 www.alsglobal.com

To: ARCHER, CATHRO AND ASSOCIATES (1981)
 LIMITED
 1016- 510 W HASTINGS ST
 VANCOUVER BC V6B 1L8

Page: 6 - B
 Total # Pages: 6 (A - C)
 Plus Appendix Pages
 Finalized Date: 16- SEP- 2011
 Account: F

Project: WLV - Andy

CERTIFICATE OF ANALYSIS WH11141108

Sample Description	Method Analyte Units LOR	ME- ICP41	ME- ICP41	ME- ICP41	ME- ICP41	ME- ICP41	ME- ICP41	ME- ICP41	ME- ICP41	ME- ICP41	ME- ICP41	ME- ICP41	ME- ICP41	ME- ICP41	ME- ICP41	
		Ga ppm	Hg ppm	K %	La ppm	Mg %	Mn ppm	Mo ppm	Na %	Ni ppm	P ppm	Pb ppm	S %	Sb ppm	Sc ppm	Sr ppm
		10	1	0.01	10	0.01	5	1	0.01	1	10	2	0.01	2	1	
CC149301		<10	<1	0.07	10	0.21	1640	1	0.02	7	1380	63	0.03	<2	2	8
CC149302		<10	<1	0.06	20	0.20	1225	<1	0.02	6	950	62	0.03	<2	1	9
CC149303		<10	<1	0.05	10	0.17	1090	<1	0.02	4	780	149	0.04	<2	1	8
CC149304		10	1	0.11	20	0.42	1490	1	0.01	12	820	169	0.02	<2	3	10
CC149305		10	<1	0.07	20	0.33	4380	1	0.01	14	780	167	0.03	<2	2	10
CC149306		10	<1	0.12	30	0.49	5560	1	0.02	26	1110	458	0.05	<2	4	25
CC149307		<10	<1	0.06	20	0.27	2440	<1	0.02	11	1110	517	0.05	<2	2	18
CC149308		10	<1	0.09	40	0.44	3140	1	0.02	20	970	325	0.06	<2	3	22
CC149251		<10	<1	0.05	10	0.02	56	2	0.02	<1	380	16	0.02	<2	1	8
CC149252		10	<1	0.06	10	0.07	142	1	0.02	1	290	8	0.01	<2	1	8
CC149253		10	<1	0.07	10	0.10	213	1	0.01	1	800	14	0.01	<2	1	4
CC149254		10	<1	0.05	10	0.09	161	17	0.02	1	230	35	0.01	<2	1	4
CC149255		10	<1	0.06	10	0.08	173	1	0.01	4	240	11	<0.01	<2	1	4
CC149256		10	<1	0.07	10	0.08	162	7	0.01	1	390	9	0.01	<2	1	5
CC149257		10	<1	0.06	10	0.08	165	1	0.01	1	270	12	0.01	<2	1	5
CC149258		<10	<1	0.03	<10	0.01	17	<1	0.03	<1	370	13	0.02	<2	<1	7
CC149259		10	<1	0.08	10	0.10	212	3	0.01	2	510	40	0.02	<2	1	6
CC149260		10	<1	0.06	10	0.10	195	3	0.01	3	480	33	0.04	<2	1	13
CC147581		10	<1	0.10	20	0.29	859	1	0.01	4	690	44	0.01	<2	2	18
CC147582		10	<1	0.10	10	0.15	238	1	0.01	2	400	24	0.02	<2	2	13
CC147583		10	<1	0.06	10	0.04	108	<1	0.01	<1	250	8	0.01	<2	<1	5
CC147584		<10	<1	0.08	20	0.17	988	<1	0.01	2	870	135	0.05	<2	1	21
CC147585		<10	<1	0.03	<10	0.02	23	<1	0.04	<1	310	4	0.02	<2	<1	6
CC147586		10	<1	0.07	10	0.19	459	<1	0.01	4	520	30	0.01	<2	1	16
CC147587		10	<1	0.10	10	0.15	194	<1	0.01	2	650	24	0.04	<2	2	3
CC147588		10	<1	0.09	10	0.11	157	<1	0.01	1	350	20	0.01	<2	1	4
CC149471		10	<1	0.08	20	0.25	136	<1	0.01	6	260	12	<0.01	<2	2	6
CC149472		10	<1	0.03	20	0.04	97	1	0.01	2	360	7	<0.01	<2	1	4
CC149473		10	<1	0.08	20	0.18	114	2	0.01	5	250	16	0.01	<2	2	5
CC149474		10	<1	0.08	10	0.31	225	3	0.01	7	330	13	0.01	<2	2	10

***** See Appendix Page for comments regarding this certificate *****



ALS Canada Ltd.
 2103 Dollarton Hwy
 North Vancouver BC V7H 0A7
 Phone: 604 984 0221 Fax: 604 984 0218 www.alsglobal.com

To: ARCHER, CATHRO AND ASSOCIATES (1981)
 LIMITED
 1016- 510 W HASTINGS ST
 VANCOUVER BC V6B 1L8

Page: 6 - C
 Total # Pages: 6 (A - C)
 Plus Appendix Pages
 Finalized Date: 16- SEP- 2011
 Account: F

Project: WLV - Andy

CERTIFICATE OF ANALYSIS WH11141108

Sample Description	Method Analyte Units LOR	ME- ICP41	ME- ICP41	ME- ICP41	ME- ICP41	ME- ICP41	ME- ICP41	ME- ICP41
		Th	Ti	Tl	U	V	W	Zn
		ppm	%	ppm	ppm	ppm	ppm	ppm
		20	0.01	10	10	1	10	2
CC149301		<20	0.03	<10	<10	23	<10	200
CC149302		<20	0.03	<10	10	21	<10	320
CC149303		<20	0.03	<10	<10	18	<10	158
CC149304		<20	0.04	<10	<10	30	20	328
CC149305		<20	0.04	<10	<10	26	10	517
CC149306		<20	0.07	<10	<10	40	60	1960
CC149307		<20	0.03	<10	<10	27	20	663
CC149308		<20	0.04	<10	<10	37	30	805
CC149251		<20	0.01	<10	<10	9	<10	24
CC149252		<20	0.03	<10	<10	20	<10	22
CC149253		<20	0.02	<10	<10	33	<10	37
CC149254		<20	0.06	<10	<10	33	<10	24
CC149255		<20	0.07	<10	<10	29	<10	28
CC149256		<20	0.05	<10	<10	32	<10	25
CC149257		<20	0.04	<10	<10	23	<10	25
CC149258		<20	0.01	<10	<10	6	<10	7
CC149259		<20	0.06	<10	<10	34	<10	45
CC149260		<20	0.06	<10	<10	28	<10	34
CC147581		<20	0.05	<10	<10	21	<10	242
CC147582		<20	0.06	<10	<10	26	<10	46
CC147583		<20	0.02	<10	<10	13	<10	15
CC147584		<20	0.02	<10	<10	12	10	301
CC147585		<20	0.02	<10	<10	7	<10	8
CC147586		<20	0.04	<10	<10	21	<10	82
CC147587		<20	0.05	<10	<10	21	<10	53
CC147588		<20	0.04	<10	<10	19	<10	30
CC149471		<20	0.06	<10	<10	31	<10	36
CC149472		<20	0.06	<10	<10	44	<10	18
CC149473		<20	0.07	<10	<10	34	<10	31
CC149474		<20	0.06	<10	<10	27	<10	48

***** See Appendix Page for comments regarding this certificate *****



ALS Canada Ltd.
2103 Dollarton Hwy
North Vancouver BC V7H 0A7
Phone: 604 984 0221 Fax: 604 984 0218 www.alsglobal.com

To: ARCHER, CATHRO AND ASSOCIATES (1981)
LIMITED
1016- 510 W HASTINGS ST
VANCOUVER BC V6B 1L8

Page: Appendix 1
Total # Appendix Pages: 1
Finalized Date: 16- SEP- 2011
Account: F

Project: WLV - Andy

CERTIFICATE OF ANALYSIS WH11141108

Method	CERTIFICATE COMMENTS
ALL METHODS	NSS is non- sufficient sample.

GL26683

ARCHER, CATHRO & ASSOCIATES (1981) LIMITED
1016 - 510 West Hastings Street
Vancouver, B.C. V6B 1L8

Telephone: 604-688-2568

Fax: 604-688-2578

AFFIDAVIT

I, Joan Mariacher, of Vancouver, B.C. make oath and say:

That to the best of my knowledge the attached Statement of
Expenditures for exploration work on the Andy 1-48 mineral claims
on claim sheet 105H/10 is accurate.


Joan Mariacher

Sworn before me at Vancouver, B.C.

this 24th day of October 2011.


Barrister & Solicitor

IAN J. TALBOT
Barrister & Solicitor
281 East 5th Street
North Vancouver
British Columbia
Canada V7L 1L8



QL26683

Statement of Expenditures
Andy 1-48 Mineral Claims
October 21, 2011

Labour

H. Smith (geologist) October 2011 – 3 hours @ \$90/hour	\$ 302.40
C. Campbell (field assistant) July 2011 – 4 days @ \$344/day	1,541.12
J. Chila (field assistant) July 2011 – 4 days @ \$344/day	1,541.12
D. Jones (field assistant) June to July 2011 – 3 days @ \$360/day	<u>1,155.84</u>
	4,540.48

Expenses (including management fee)

Field room and board – 12 days @ \$150/day	2,016.00
Outbound Aviation	8,951.50
Inconnu Lodge	2,551.50
ALS Chemex	<u>5,049.35</u>
	18,568.35

Total \$23,108.83



AL26683

Inconnu Lodge

Yukon Territory, Canada
 Box 29008 OK Mission RPO
 Kelowna, B.C. Canada, V1W 4A7

Tel: 250-860-4187
 Fax: 250-860-8894
 Email: info@inconnulodge.com



Accommodations - July 12 - August 3

Archer Cathro & Associates

Names: WLV Finlayson

Dylan Jones
 Craig Campbell
 Ryan Gibbons

Jim Dawson Group

Jim Dawson
 Ron
 Les

731.25

in Andy - 2250.
 in Arm - 750.
 in CO - 750.
 in HCW - 1250.
 in Hall - 1125.00
 in Loop - 625.00
 in Reid - 125.
 in String - 250. 15376.25

4A = 2362.50

July 21, Ron & Les out, Gary & Rob in
 July 24, Jim out, Gary in
 August 1, Richard, Sarah & Kevin in
 August 2, Gary out

POSTED

Date	# of Persons	Rate	Sub Total	Total
July 12	3 persons	125.00	375.00	
July 13	3 Persons	125.00	375.00	
July 14	3 Persons	125.00	375.00	
July 15	6 Persons	125.00	750.00	
July 16	6 Persons	125.00	750.00	
July 17	6 Persons	125.00	750.00	
July 18	6 Persons	125.00	750.00	
July 19	6 Persons	125.00	750.00	
July 20	6 Persons	125.00	750.00	
July 21	6 Persons	125.00	750.00	
July 22	6 Persons	125.00	750.00	
July 23	5 Persons	125.00	625.00	
July 24	5 Persons	125.00	625.00	
July 25	5 Persons	125.00	625.00	
July 26	5 Persons	125.00	625.00	
July 27	5 Persons	125.00	625.00	
July 28	5 Persons	125.00	625.00	
July 29	5 Persons	125.00	625.00	
July 30	5 Persons	125.00	625.00	
July 31	5 Persons	125.00	625.00	
August 1	8 Persons	125.00	1000.00	
August 2	7 Persons	125.00	875.00	14625.00
5% GST				725.00
Total				\$ 15,225.00

14625.00

731.25

15376.25

91



ALS Canada Ltd.
 2103 Dollarton Hwy
 North Vancouver BC V7H 0A7
 Phone: 604 984 0221 Fax: 604 984 0218 www.alsglobal.com

To: ARCHER, CATHRO AND ASSOCIATES (1981) LIMITED
 1016-510 W HASTINGS ST
 VANCOUVER BC V6B 1L8

INVOICE NUMBER 2374902

BILLING INFORMATION	
Certificate:	WH11141108
Sample Type:	Soil
Account:	F
Date:	16-SEP-2011
Project:	WLV - Andv
P.O. No.:	
Quote:	ALSM-CW11-013-F
Terms:	Net 30 Days
Comments:	C1

ANALYSED FOR			UNIT	TOTAL
QUANTITY	CODE	DESCRIPTION	PRICE	
190	PREP-41	Dry, Sieve (180 um) Soil	1.05	199.50
49.94	PREP-41	Weight Charge (kg) - Dry, Sieve (180 um) Soil	1.69	84.40
187	Au-ICP21	Au 30g FA ICP-AES Finish	11.93	2,230.91
190	ME-ICP41	35 Element Aqua Regia ICP-AES	5.33	1,012.70
190	GEO-AR01	Aqua regia digestion	2.62	497.80

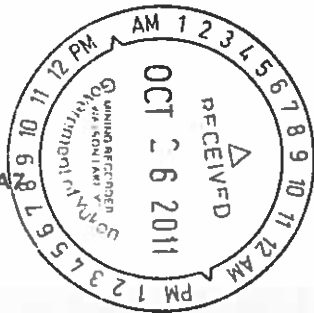
SUBTOTAL (CAD) \$ 4,025.31
 R100938885 HST BC \$ 483.04
TOTAL PAYABLE (CAD) \$ 4,508.35

To: ARCHER, CATHRO AND ASSOCIATES (1981) LIMITED
 ATTN: JOAN MARIACHER
 1016-510 W HASTINGS ST
 VANCOUVER BC V6B 1L8

Payment may be made by: Cheque or Bank Transfer

Beneficiary Name: ALS Canada Ltd.
 Bank: Royal Bank of Canada
 SWIFT: ROYCCAT2
 Address: Vancouver, BC, CAN
 Account: 003-00010-1001098
 Please send payment info to accounting.canusa@alsglobal.com

Please Remit Payments To :
ALS Canada Ltd.
 2103 Dollarton Hwy
 North Vancouver BC V7H 0A7



R126683

9L26683

Over Board Aviation
KLUANE AIRWAYS LTD.
 BOX 31489
 WHITEHORSE, YUKON Y1A 6K8

07/19/11	
INVOICE DATE	
1700D	B6047
AIRCRAFT TYPE	REGISTRATION

ARCIAL CHATTO
 CHARTERER

NO 5930

RE: WLU FINLAYSON
 BILLING ADDRESS

PHONE: _____

FROM	MILES	HOURS	REMARKS/PASSENGER/CARGO
Hce Day			
TO AND Day			
Hce Day		1.2	SET out 3
AND Day			
Hce Day		1.2	PICK up 27

SPECIAL INSTRUCTIONS	2.4	9075 PER HOUR	2500 ⁰⁰
Dep/AN		PER MILE	
CHATG	WAITING TIME	/ HR	
SHAR	FUEL 264	1.44 / GAL.	380 ¹⁶
	PILOT'S EXPENSES		
	OTHER		
		SUB-TOTAL	2960 ¹⁶
		GST	148 ⁰⁰
	2% PER MONTH CHARGES ON ACCOUNTS OVER 30 DAYS	TOTAL \$	3108 ¹⁶

[Signature]
 CHARTERER'S SIGNATURE

[Signature]
 PILOT'S SIGNATURE

WHITE - OFFICE
 YELLOW - OFFICE COPY RECORD
 PINK - CUSTOMER COPY
 GOLD - BASE COPY (Stays in book.)
 WILLOW PRINTERS LTD.

Andy A ↑



0126683

OCE BOUND AVIATION
KLUANE AIRWAYS LTD.
 BOX 31489
 WHITEHORSE, YUKON Y1A 6K8

Arcika Cattro
 CHARTERER

Re: WCV FINLAYSON
 BILLING ADDRESS

07/18/11	
INVOICE DATE	
HSB00	GG44
AIRCRAFT TYPE	REGISTRATION

No 5929

PHONE: _____

FROM	MILES	HOURS	REMARKS/PASSENGER/CARGO
McEvoey			
TO ANDER			
McEvoey		1.0	SET out 3
ANDER			
McEvoey		1.1	PICK up 3.

SPECIAL INSTRUCTIONS	2.1	\$1075 PER HOUR	2257.50
<i>Sylvan</i>		PER MILE	
<i>CRA</i>	WAITING TIME	/ HR	
	FUEL 231 @ 1.44	/ GAL.	3326.4
	PILOT'S EXPENSES		
	OTHER		
		SUB-TOTAL	2590.14
		GST	129.50
		TOTAL \$	2719.64

2% PER MONTH CHARGES ON ACCOUNTS OVER 30 DAYS

WHITE - OFFICE
 YELLOW - OFFICE COPY RECORD
 PINK - CUSTOMER COPY
 GOLD - BASE COPY (Stays in book.)

WILLOW PRINTERS LTD.

CHARTERER'S SIGNATURE

PILOT'S SIGNATURE

only A ↑



QLZ603

OCEAN BOUND AVIATION
KLUANE AIRWAYS LTD.
BOX 31489
WHITEHORSE, YUKON Y1A 6K8

07/17/11
INVOICE DATE
H5007 6644
AIRCRAFT TYPE REGISTRATION

ARCHER CATHRO
CHARTERER

No 5928

Re. WLU Finlayson
BILLING ADDRESS

PHONE: _____

FROM	MILES	HOURS	REMARKS/PASSENGER/CARGO
McEvoy			
TO Andel			
McEvoy		1.1	SET out
Andel			
McEvoy		1.8	Pick up

SPECIAL INSTRUCTIONS	1.9 @ 1079 PER HOUR	2042.50
DeLAN	@ PER MILE	
CRAIG	WAITING TIME @ / HR	
	FUEL 209 @ 1.44 / GAL.	300.96
	PILOT'S EXPENSES	
	OTHER	
	SUB-TOTAL	2343.46
	GST	117.17
	TOTAL \$	2460.63

2% PER MONTH CHARGES ON ACCOUNTS OVER 30 DAYS

WHITE - OFFICE
YELLOW - OFFICE COPY RECORD
PINK - CUSTOMER COPY
GOLD - BASE COPY (Stays in book)

WILLOW PRINTERS LTD

CHARTERER'S SIGNATURE
PILOT'S SIGNATURE

Andy A 4

