

ARCHER, CATHRO & ASSOCIATES (1981) LIMITED
1016 - 510 West Hastings Street
Vancouver, B.C. V6B1L8

Telephone: 604-688-2568

Fax: 604-688-2578

ASSESSMENT REPORT

describing

PROSPECTING AND GEOCHEMICAL SAMPLING

at the

MOUSE PROPERTY

Mouse 1-48 YC70485-YC70532

NTS 116A/06 & 07
Latitude 64°21'N; Longitude 136°59'W

Located in the

Mayo Mining District
Yukon Territory

prepared by

Archer, Cathro & Associates (1981) Limited

for

ATAC RESOURCES LTD.

by

Matthew R. Dumala, P.Eng.

February 2012

CONTENTS

INTRODUCTION	1
PROPERTY LOCATION, CLAIM DATA, ACCESS AND INFRASTRUTURE	1
EXPLORATION HISTORY	1
GEOMORPHOLOGY	2
GEOLOGY	2
GEOCHEMISTRY	4
DISCUSSION AND CONCLUSIONS	5

REFERENCES

E

RROR! BOOKMARK NOT DEFINED.

APPENDICES

I	STATEMENT OF QUALIFICATIONS
II	CERTIFICATES OF ANALYSIS
III	ROCK SAMPLE DESCRIPTIONS

FIGURES

<u>No.</u>	<u>Description</u>	<u>Follows page</u>
1	Property Location	1
2	Claim Locations	1
3	Tectonic Setting	2
4	Geology	3
5	Sample Locations	4
6	Gold and Silver Geochemistry	4
7	Mercury and Antimony Geochemistry	4
8	Lead and Zinc Geochemistry	4

TABLES

I	Regional Lithological Units	3
---	-----------------------------	---

INTRODUCTION

The Mouse property is located in central Yukon along the northern edge of the Tintina Gold Belt, a band of intrusion-related gold deposits that extends across Yukon and Alaska. The property is primarily of interest for epithermal gold. The property is owned 100% by ATAC Resources Ltd.

This report describes a one day reconnaissance program that was conducted on the property on August 6, 2011 by Archer, Cathro & Associates (1981) Limited on behalf of ATAC. The author participated in and supervised this project, which consisted of prospecting, soil and silt geochemical sampling. The author's Statement of Qualifications appears in Appendix I.

PROPERTY LOCATION, CLAIM DATA, ACCESS AND INFRASTRUTURE

The Mouse property consists of 48 contiguous mineral claims which are located in central Yukon at latitude 64°21'N and longitude 136°59'W on NTS map sheets 116A/06 & 116A/07 (Figure 1). The property covers an area of approximately 940 hectares (9.4 km²). The claims are registered with the Mayo Mining Recorder in the name of Archer Cathro, which holds them in trust for ATAC. Specifics concerning claim registration are tabulated below while the locations of individual claims are shown on Figure 2.

Claim Name	Grant Number	Expiry Date*
Mouse 1-48	YC70485-YC70532	April 28, 2014

* Expiry dates include 2011 work which has been filed for assessment credit but not yet accepted.

The property lies 98 km northwest of Mayo, the nearest supply centre. The Dempster Highway passes within 58 km of the property and is accessible via the Klondike Highway near Dawson City. Mayo and Dawson City are assessable in all seasons by two wheel drive vehicles.

In 2011, access to and from the property was provided by a Bell 206L4 helicopter owned and operated by Fireweed Helicopters Ltd. of Whitehorse, from a temporary base at ATAC's Rau property, located 120 km east of the Mouse property.

EXPLORATION HISTORY

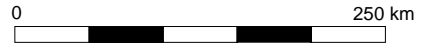
A single stream sediment sample was collected from a drainage near the eastern property boundary during a government regional stream geochemical sampling (RGS) program in the late 1970's. This sample yielded anomalous mercury (350 ppb) and silver (0.7 g/t), the highest values on the map sheet. Zinc was also elevated (188 ppm) and falls within the 90th percentile for this map sheet (Friske, et al.).

Following the discovery of the Tiger Zone at the Rau property, ATAC staked the Mouse claims in 2008 to cover what appeared to be a similar geological setting. Prior to 2011, no exploration activity has been reported in the vicinity of the Mouse claims (Deklerk and Traynor, 2004).

ATAC RESOURCES LTD.

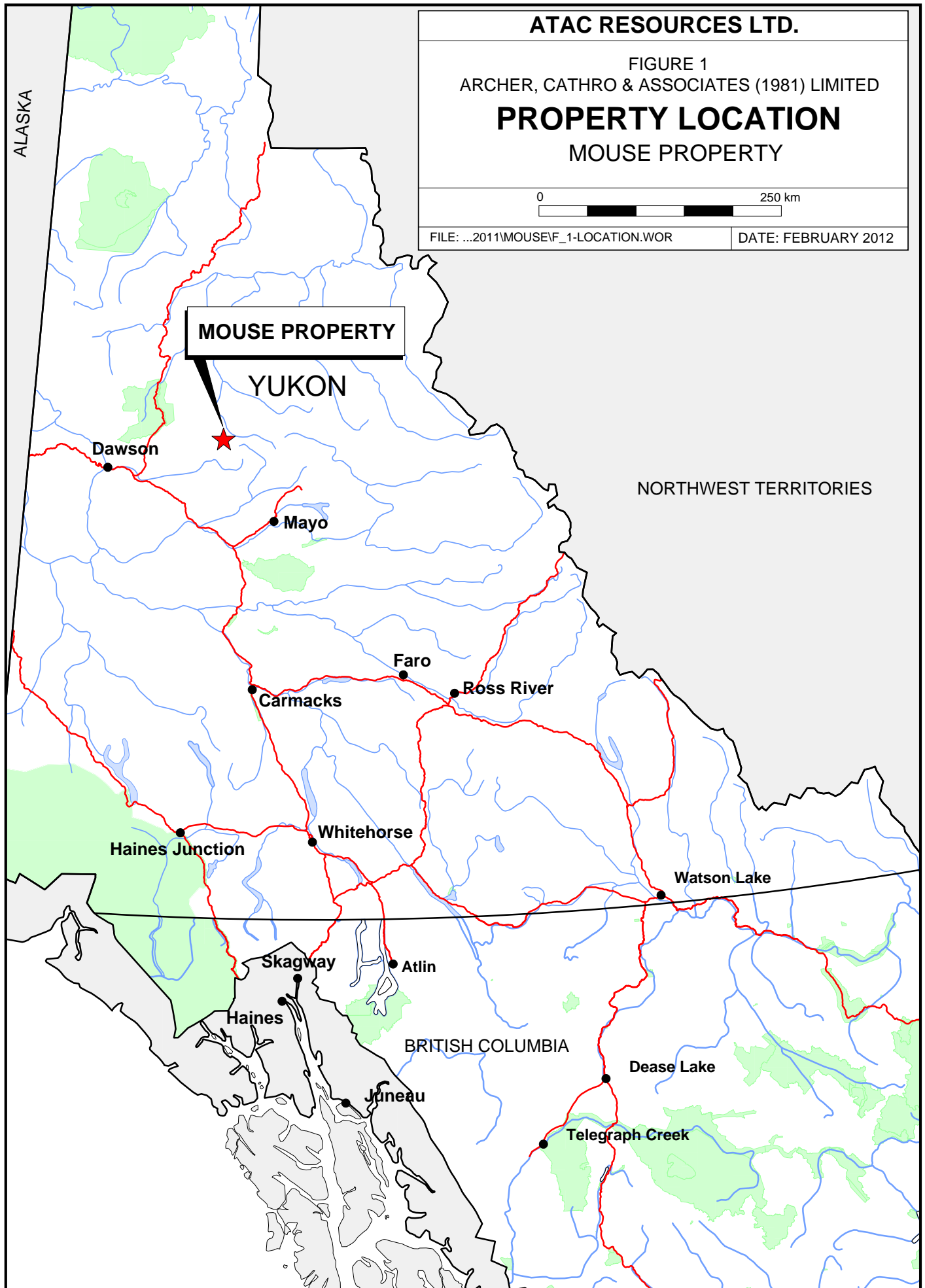
FIGURE 1
ARCHER, CATHRO & ASSOCIATES (1981) LIMITED

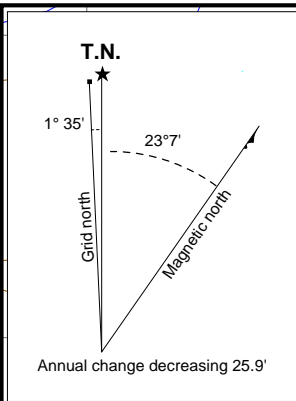
PROPERTY LOCATION
MOUSE PROPERTY



FILE: ...2011\MOUSE\F_1-LOCATION.WOR

DATE: FEBRUARY 2012





Mouse 1 YC70485	Mouse 3 YC70487	Mouse 5 YC70489	Mouse 7 YC70491	Mouse 9 YC70493	Mouse 11 YC70495	Mouse 13 YC70497	Mouse 15 YC70499
Mouse 2 YC70486	Mouse 4 YC70488	Mouse 6 YC70490	Mouse 8 YC70492	Mouse 10 YC70494	Mouse 12 YC70496	Mouse 14 YC70498	Mouse 16 YC70500
Mouse 17 YC70501	Mouse 19 YC70503	Mouse 21 YC70505	Mouse 23 YC70507	Mouse 25 YC70509	Mouse 27 YC70511	Mouse 29 YC70513	Mouse 31 YC70515
Mouse 18 YC70502	Mouse 20 YC70504	Mouse 22 YC70506	Mouse 24 YC70508	Mouse 26 YC70510	Mouse 28 YC70512	Mouse 30 YC70514	Mouse 32 YC70516
Mouse 33 YC70517	Mouse 35 YC70519	Mouse 37 YC70521	Mouse 39 YC70523	Mouse 41 YC70525	Mouse 43 YC70527	Mouse 45 YC70529	Mouse 47 YC70531
Mouse 34 YC70518	Mouse 36 YC70520	Mouse 38 YC70522	Mouse 40 YC70524	Mouse 42 YC70526	Mouse 44 YC70528	Mouse 46 YC70530	Mouse 48 YC70532

7 139 000 mN

7 138 000 mN

7 137 000 mN

402 000 mE

403 000 mE

404 000 mE

405 000 mE

ATAC RESOURCES LTD.

FIGURE 2
 ARCHER, CATHRO & ASSOCIATES (1981) LIMITED

CLAIM LOCATIONS
 MOUSE PROPERTY

0 1000 m

UTM NAD83, Zone 8

FILE: ...2011\MOUSE\F_2-CLAIMS.WOR

DATE: FEBRUARY 2012

GEOMORPHOLOGY

The Mouse property covers a low elevation ridge system situated in the Ogilvie Mountains and is drained by creeks that flow into the Rae River, which flows into the Hart River and ultimately the Peel River. Local topography is alpine to subalpine and features a gentle east-west trending ridge system. Elevations range from 1125 m alongside a tributary of Mouse Creek on the west side of the claim block to 1590 m atop a gentle peak in the center of the property. Hillsides are talus covered with poor soil development and rare outcrop.

Treeline in the vicinity of the property is at about 1300 m. Slopes above that elevation are sparsely vegetated, consisting mostly of mosses. The density and size of vegetation gradually increases near the valley floors, which are thinly treed with stunted black spruce. Understorey typically consists of buckbrush and moss. Steep, north facing slopes are usually unvegetated.

GEOLOGY

Regional Geology

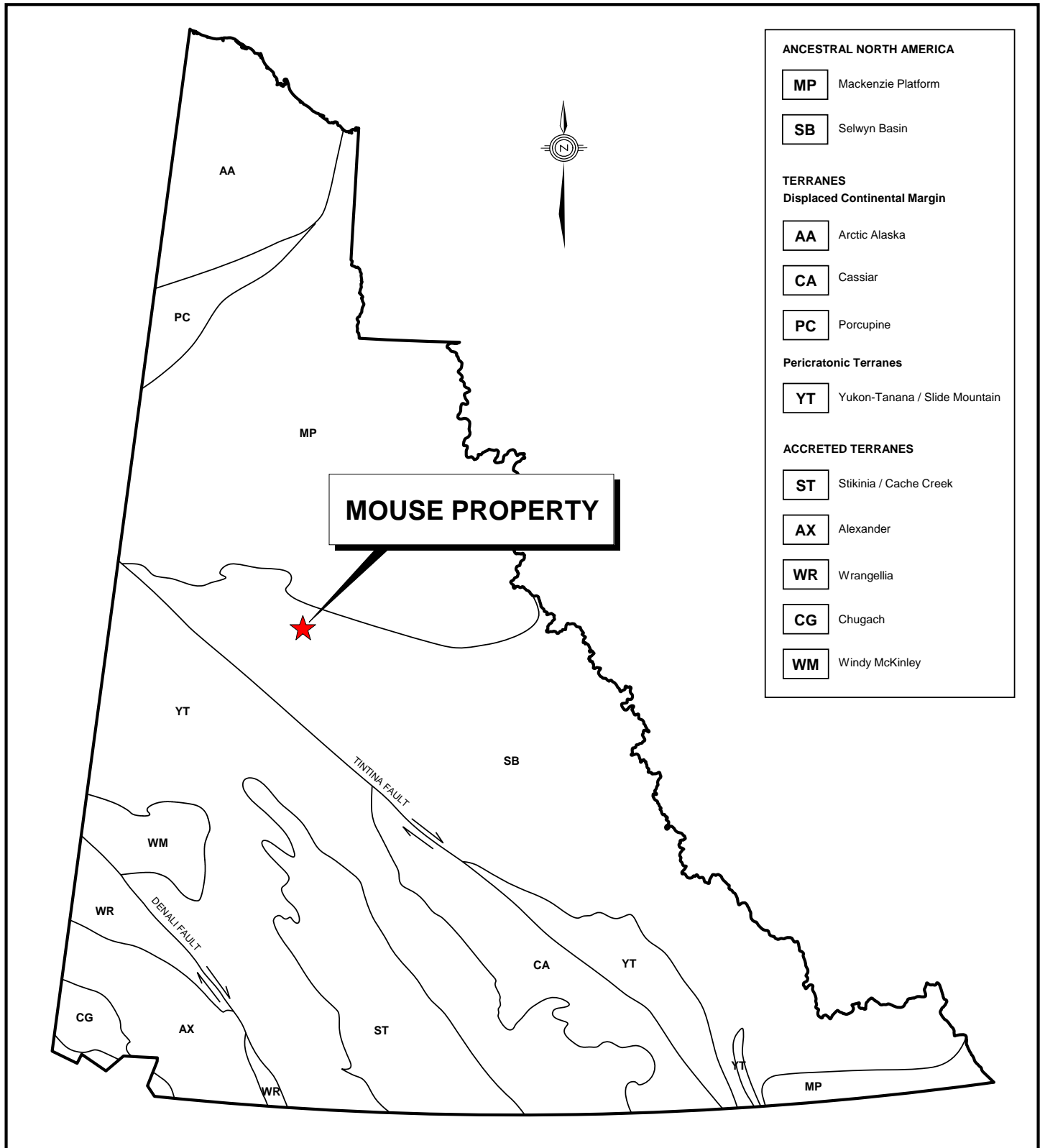
The Geological Survey of Canada performed geological mapping in the vicinity of the Mouse property at 1:250,000 scale in the 1960s (Green, 1972).

The Mouse property lies within a band of regional-scale thrust and high angle reverse faults that imbricate rocks of Selwyn Basin and Mackenzie Platform (Figure 3). Selwyn Basin stratigraphy consists of regionally metamorphosed, basinal sediments of Neoproterozoic to Paleozoic age. Mackenzie Platform stratigraphy comprises dominantly shallow water carbonate and clastic sediments that were deposited from Mid-Proterozoic through Paleozoic times. Both packages of sediments were deposited on the western margin of ancestral North America.

The thrust faults were active during Jurassic to Cretaceous times (160 to 130 Ma), when the area underwent compressional orogenesis related to large-scale plate convergence (Fingler, 2005). During Late Cretaceous (94-90 Ma), intermediate to felsic plutons of the Tombstone Suite were emplaced (Mortensen et al, 2000). Another compressional orogenic event, which occurred about 65 Ma, was accompanied by emplacement of felsic intrusions assigned to the McQuesten Suite.

To the south of the Mouse claim block, the Robert Service Thrust places Hyland Group atop Keno Hill Quartzite. A high angle fault along the southern property margin truncates the thrust. The Tombstone Thrust is located to the northwest of the claim block and terminates against another high angle fault before it reaches the property.

The following table contains a brief summary of the main lithologies in the area of the Mouse property.



- ANCESTRAL NORTH AMERICA**
- MP** Mackenzie Platform
 - SB** Selwyn Basin
- TERRANES**
- Displaced Continental Margin**
- AA** Arctic Alaska
 - CA** Cassiar
 - PC** Porcupine
- Pericratonic Terranes**
- YT** Yukon-Tanana / Slide Mountain
- ACCRETED TERRANES**
- ST** Stikinia / Cache Creek
 - AX** Alexander
 - WR** Wrangellia
 - CG** Chugach
 - WM** Windy McKinley



ATAC RESOURCES LTD.

FIGURE 3
 ARCHER, CATHRO & ASSOCIATES (1981) LIMITED

TECTONIC SETTING
 MOUSE PROPERTY

0 200 km

FILE: ...2011\MOUSE\F_3-TECTONIC.WOR DATE: FEBRUARY 2012

Table I – Lithological Units (after Gordey and Makepeace, 2003)

Unit Name	Age (Ma)	Map Name	Description
Overburden	0 - 3	Q	ice-deposited sand and gravel; river silt
Ross Assemblage	34 - 55	ITR	quartz feldspar porphyry and rhyolite
McQuesten Suite intrusions	62 – 67	LKqM	granite with two types of mica
Tombstone Suite intrusions	90 - 94	mKT	granite and granodiorite
Galena Suite intrusions	225	TrG	brown and green diorite and gabbro
Keno Hill Quartzite	340	MK	grey metamorphosed sandstone, minor black shale and phyllite
Earn Group	390 - 350	DME	black shale and chert with lesser pebble conglomerate, sandstone and grit
Hyland Group	750? - 530	PCH	brown quartz-mica schist, with rare limestone

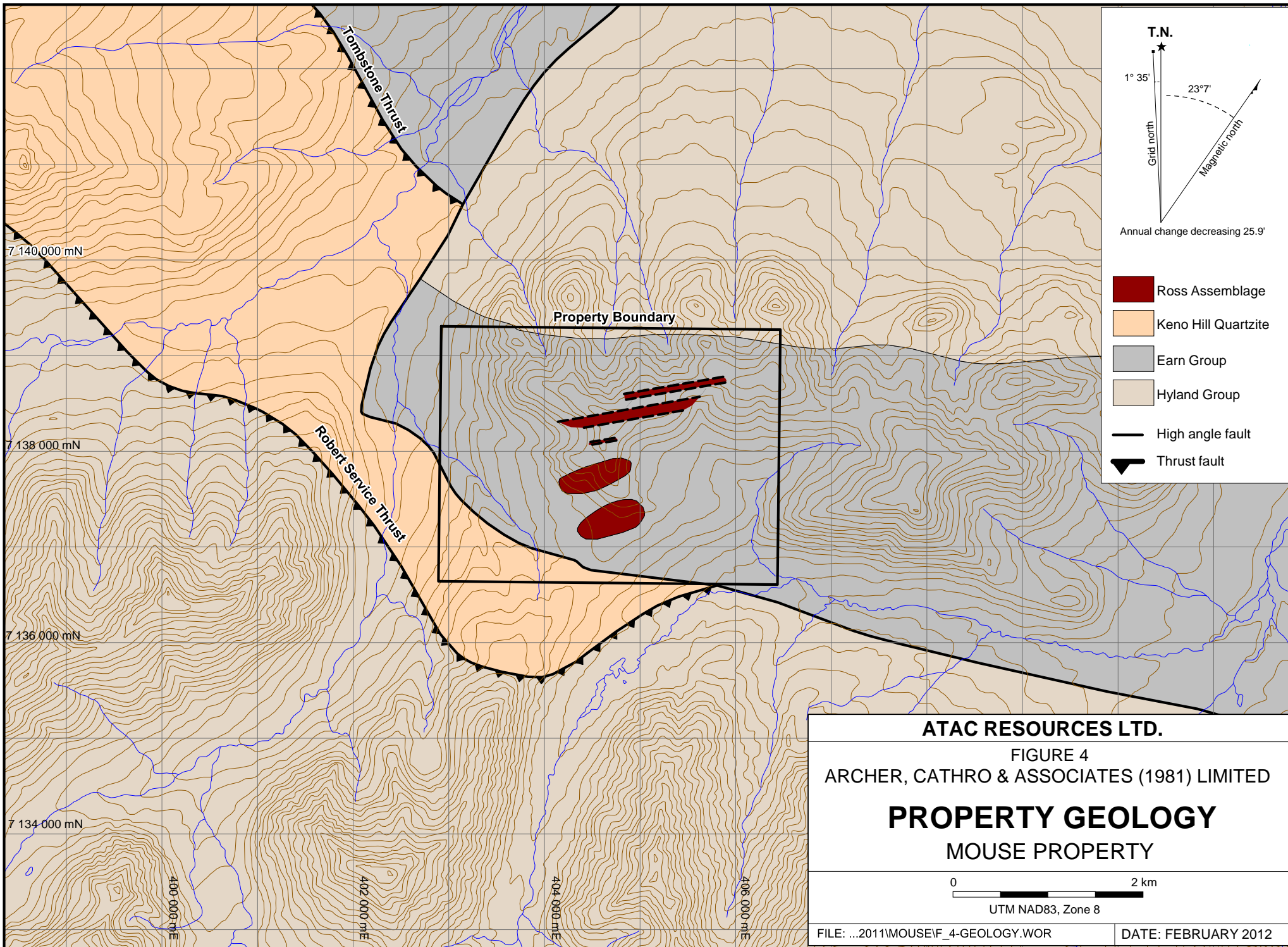
Property Geology

No detailed geological mapping has been conducted within the current property boundary. The following descriptions are taken largely from previously documented regional government mapping and illustrated in Figure 4.

The Mouse property is located immediately north of the Robert Service Thrust and southeast of the Tombstone Thrust. A series of normal faults truncate both of these thrust faults.

Devonian and Mississippian **Earn Group** underlies much of the property. This unit is generally recessive weathering and is mostly composed of dark grey to black shale and chert. Along the southern edge of the property, a high angle normal fault places Earn Group against a thin sliver of **Keno Hill Quartzite**. At the northern property boundary, the Earn Group unconformably lies above **Hyland Group**.

Government mapping completed in the late 1970's outlined three quartz feldspar porphyry sills belonging to the Lower Tertiary **Ross Assemblage**, situated near the centre of the property within Earn Group shale. Each of these mapped units is composed of alternating steeply dipping, northeast trending quartz feldspar porphyry and rhyolite. Locally this unit is brecciated and contains abundant quartz veins. No mapping was conducted further to the south in 2011.



GEOCHEMISTRY

In 2011, a four person crew conducted wide spaced reconnaissance sampling over the course of one day. Sampling comprised 34 soil samples, three silt samples and 14 rock samples.

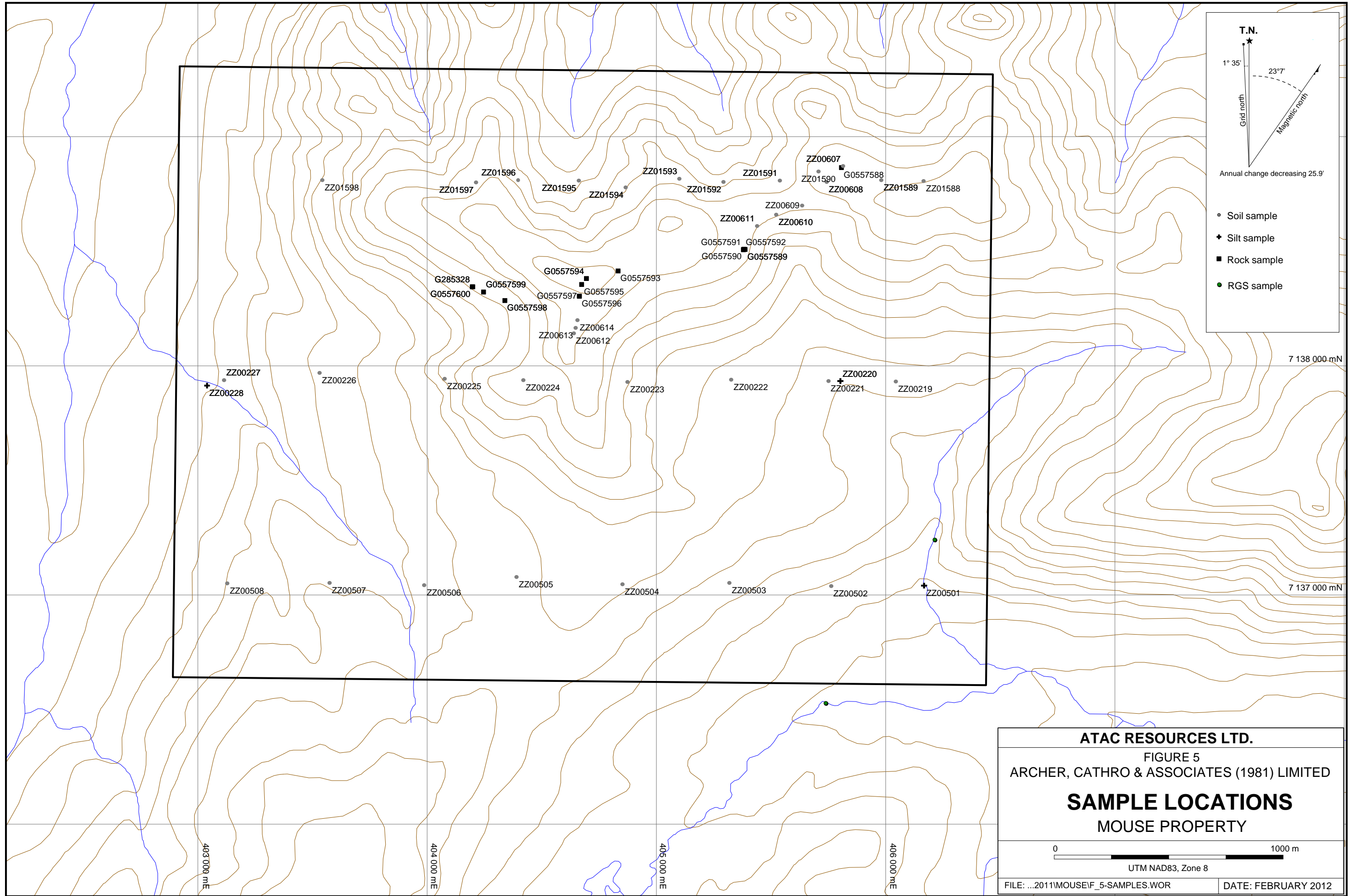
The majority of samples were collected along three sample lines corresponding to the claim lines and spaced 500 m apart on the southern two lines and 250 m on the northern. The relative line positions and spacing were established using a handheld GPS. Sample sites are marked by wooden lath bearing aluminum tags inscribed with the corresponding sample number. Figure 5 shows sample locations, while Figures 6 to 8 show sample results.

All soil samples were collected from holes, which were augered to depths of 20 to 50 cm below surface. The soil was taken from the bottom of the holes and placed in pre-numbered Kraft paper bags. At higher elevations and on steeper slopes, the samples consisted of immature soils mixed with talus fines. At lower elevations, the sampled material mostly comprised residual soils mixed with glacially transported material.

The samples were transported from the property to Whitehorse in the custody of Archer Cathro employees. From there, they were shipped to the ALS Minerals preparation facilities in Whitehorse then to ALS's lab in North Vancouver. At the lab, soil and silt samples were dried and screened to -35 mesh to produce a fine fraction, which was then pulverized to 85% passing 75 microns. Splits of the pulverized fraction were routinely dissolved in aqua regia and analyzed for 51 elements using inductively coupled plasma with mass spectroscopy and atomic emission spectroscopy (ME-MS41). All samples were also analyzed for gold by a solvent extraction and graphite furnace atomic absorption spectroscopy method (Au-TL43). Rock samples were analyzed for 48 elements using technique ME-MS61, which combined ICP-AES and ICP-MS. Samples were analyzed for gold by fire assay finished with atomic absorption spectroscopy (Au-AA26). Certificates of Analysis appear in Appendix II.

Silt samples collected from the creek and a secondary tributary along the eastern property boundary returned similar results to the RGS sample collected in the 1970's. Peak values were 1.38 g/t silver, 540 ppb mercury, 2.97 ppm antimony and 221 ppm zinc. Silver and zinc values were higher from the sample collected from the tributary, while mercury and antimony were higher from the main creek. Values from the silt sample collected along the western boundary were near background.

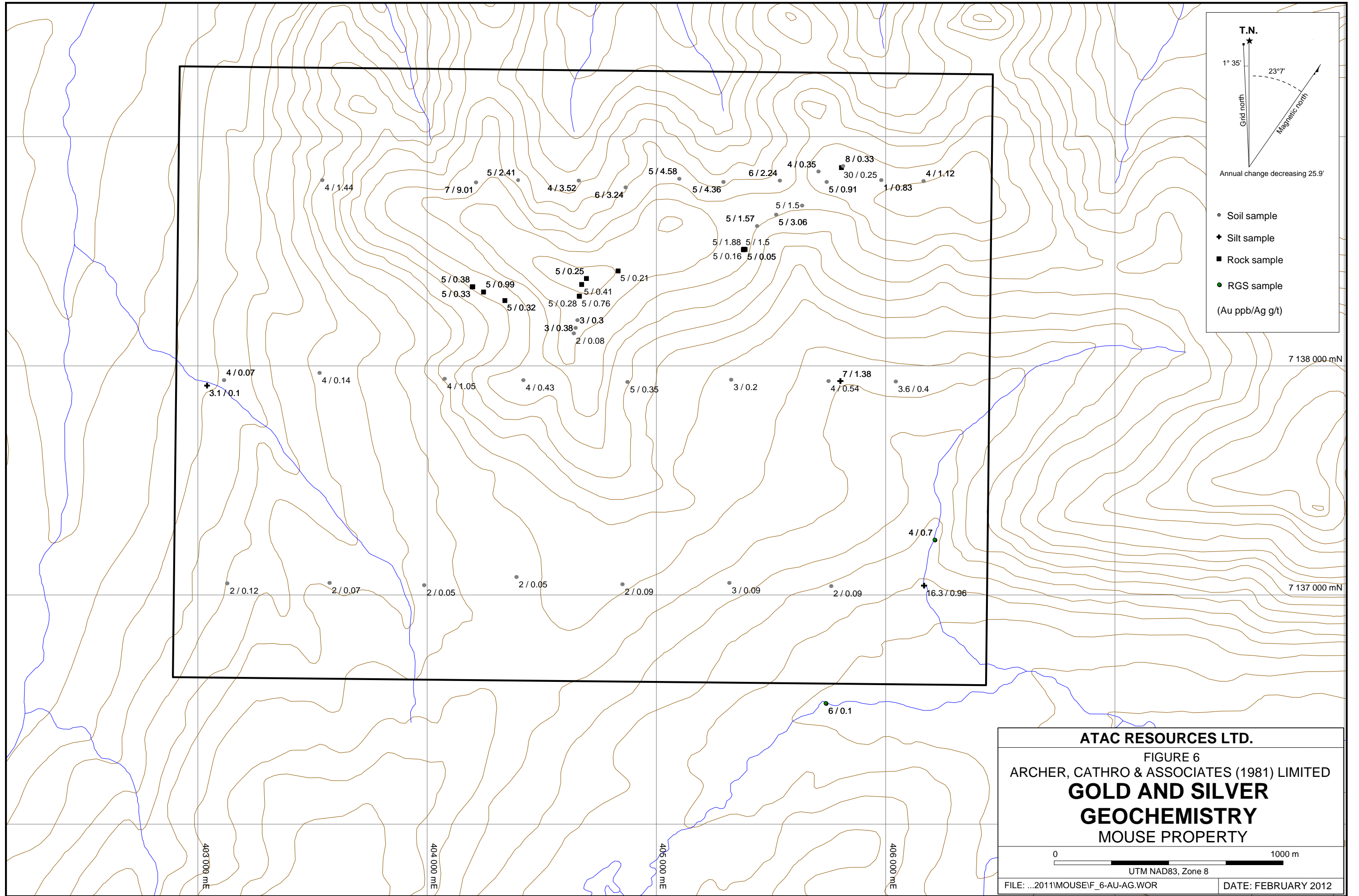
Peak values from soil samples are 9.01 g/t silver, 1.54 ppm mercury, 7.05 ppm antimony and 906 ppm zinc. These samples all came from the northern line. Of the 16 samples collected along the northern line and along the ridge, all but four returned silver values greater than 1.0 g/t and all but one yielded antimony greater than 1.0 ppm. The peak mercury value corresponds to the peak silver and is the only sample collected within a north facing cirque. Samples collected from the southern two lines returned subdued values for all elements relative to the northern line. This is likely due in part to the thick overburden cover lower on the hillside and on the valley floor.



ATAC RESOURCES LTD.
 FIGURE 5
 ARCHER, CATHRO & ASSOCIATES (1981) LIMITED
SAMPLE LOCATIONS
 MOUSE PROPERTY

0 1000 m
 UTM NAD83, Zone 8

FILE: ...2011MOUSEF_5-SAMPLES.WOR DATE: FEBRUARY 2012



T.N. ★

1° 35' Grid north

23° 7' Magnetic north

Annual change decreasing 25.9'

- Soil sample
- ✦ Silt sample
- Rock sample
- RGS sample

(Au ppb/Ag g/t)

ATAC RESOURCES LTD.

FIGURE 6

ARCHER, CATHRO & ASSOCIATES (1981) LIMITED

GOLD AND SILVER

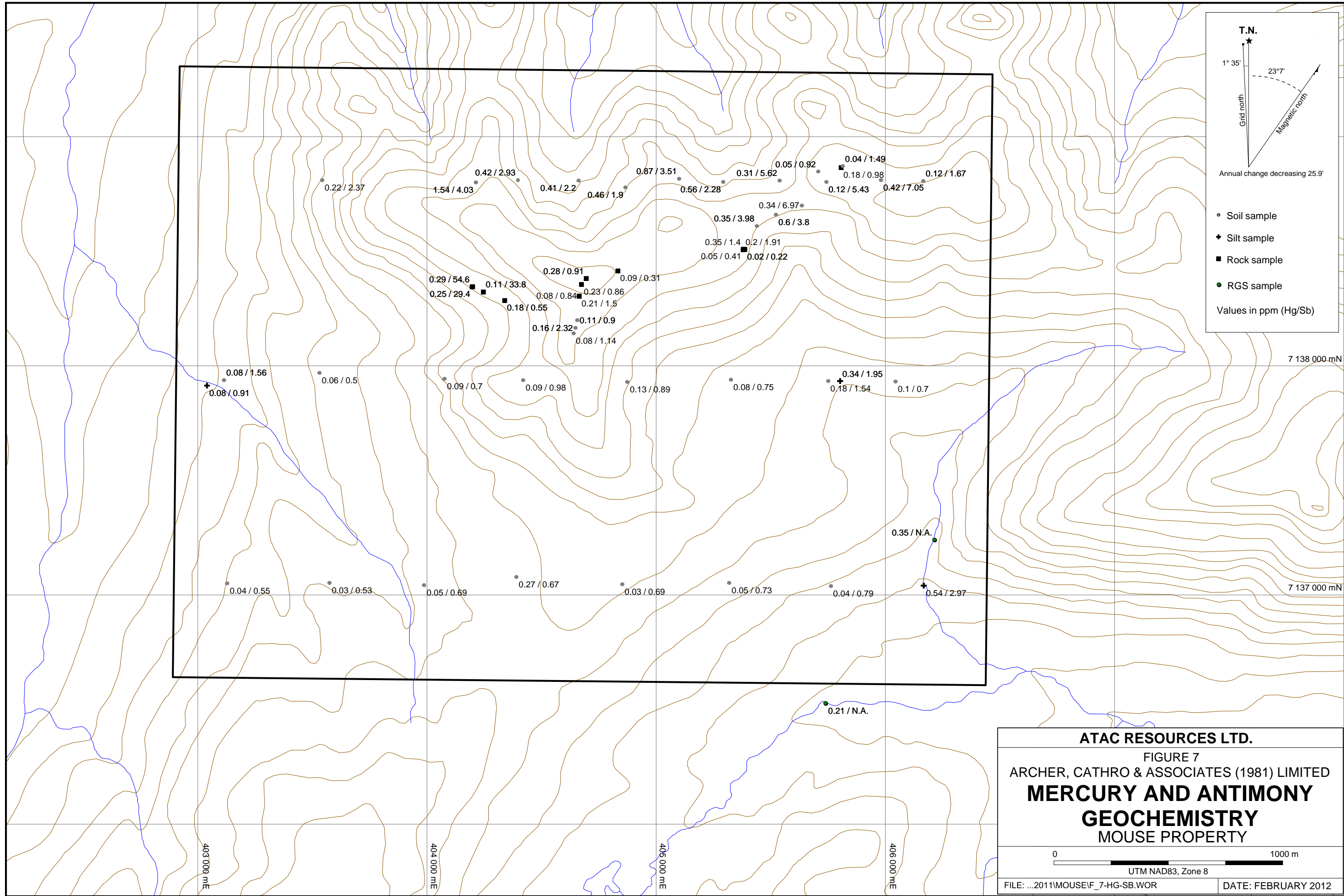
GEOCHEMISTRY

MOUSE PROPERTY

0 1000 m

UTM NAD83, Zone 8

FILE: ...2011MOUSEIF_6-AU-AG.WOR DATE: FEBRUARY 2012



T.N.

1° 35' Grid north

23° 7' Magnetic north

Annual change decreasing 25.9'

- Soil sample
- + Silt sample
- Rock sample
- RGS sample

Values in ppm (Hg/Sb)

ATAC RESOURCES LTD.

FIGURE 7

ARCHER, CATHRO & ASSOCIATES (1981) LIMITED

MERCURY AND ANTIMONY

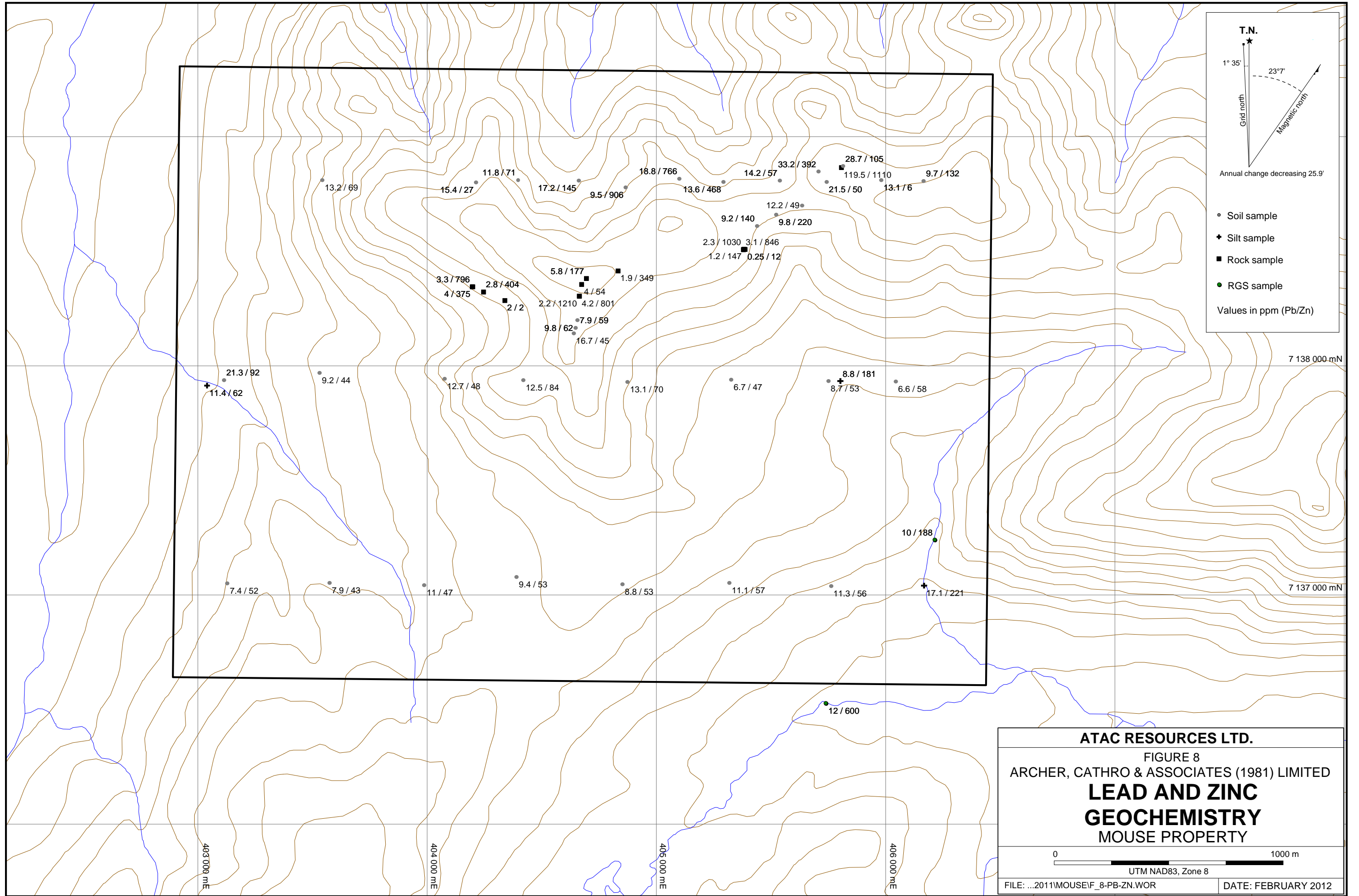
GEOCHEMISTRY

MOUSE PROPERTY

0 1000 m

UTM NAD83, Zone 8

FILE: ...2011MOUSEF_7-HG-SB.WOR DATE: FEBRUARY 2012



T.N.

1° 35' Grid north

23° 7' Magnetic north

Annual change decreasing 25.9'

- Soil sample
- ✦ Silt sample
- Rock sample
- RGS sample

Values in ppm (Pb/Zn)

ATAC RESOURCES LTD.

FIGURE 8

ARCHER, CATHRO & ASSOCIATES (1981) LIMITED

LEAD AND ZINC

GEOCHEMISTRY

MOUSE PROPERTY

0 1000 m

UTM NAD83, Zone 8

FILE: ...2011MOUSE\F_8-PB-ZN.WOR DATE: FEBRUARY 2012

Three intensely brecciated samples containing siderite and limonite were collected from a float train along trend to the west of a mapped quartz feldspar porphyry sill. These samples returned elevated antimony values (29.4 ppm, 33.8 ppm and 54.6 ppm). Rock Sample Descriptions are given in Appendix III.

DISCUSSION AND CONCLUSIONS

The Mouse property covers a series of quartz feldspar porphyry sills within Earn Group shale. Outcrop is sparse, however, it is believed that the extensive talus cover is locally derived and representative of the underlying bedrock. Quartz vein float is abundant along the main ridge system and is typically found along with quartz feldspar porphyry float.

Although no mineralization has been identified to date, any mineralization would likely be associated with quartz veins and quartz feldspar porphyry sills. Any further exploration should be limited to mapping and wide spaced grid soil sampling along the main ridge system and northern cirques.

Respectfully submitted

ARCHER, CATHRO & ASSOCIATES (1981) LIMITED

Matthew R. Dumala, P.Eng.

REFERENCES

Deklerk, R. and Traynor, S. (compilers)

- 2004 Yukon MINFILE 2004 - A database of mineral occurrences; Yukon Geological Survey, CD-ROM.

Fingler, J.

- 2005 Private geological report on the McQuesten Property for Alexco Resources Corp; published in Alexco prospectus, available from (http://www.sedar.com/issuers/issuers_en.htm).

Friske, P.W.B., Hornbrook, E.H.W., Lynch, J.J., McCurdy, M.W., Gross, H., Galletta, A.C. and Durham, G.C.

- 1977 Regional Steam Sediment and Water Geochemical Reconnaissance Data (116A and 116H South), Geological Survey of Canada, Open File 2176.

Gordey, S.P. and Makepeace, A.J. (compilers)

- 2003 Yukon digital geology, version 2.0, Geological Survey of Canada, Open File 1749 and Yukon Geological Survey, Open File 2003-9 (D).

Green, L.C.

- 1972 Geology of Nash Creek, Larsen and Dawson Map Areas, Yukon Territory; Geological Survey of Canada, Memoir 364

Mortensen, J.K., Hart, C.J.R., Murphy, D.C. and Heffernan, S.

- 2000 Temporal Evolution of Early and Mid-Cretaceous Magmatism in the Tintina Gold Belt; Concepts, Exploration, and Discoveries, Special Volume 2, British Columbia and Yukon Chamber of Mines, January 2000, pp 49-57.

APPENDIX I
STATEMENTS OF QUALIFICATIONS

STATEMENT OF QUALIFICATIONS

I, Matthew R. Dumala, geological engineer, with business addresses in Vancouver, British Columbia and Whitehorse, Yukon Territory and residential address in Vancouver, British Columbia, do hereby certify that:

1. I graduated from the University of British Columbia in 2002 with a B.A.Sc in Geological Engineering, Option 1, mineral and fuel exploration.
2. I registered as a Professional Engineer in the Province of British Columbia on November 14, 2008 (License Number 32783).
3. From 2003 to present, I have been actively engaged in mineral exploration in the Yukon Territory.
4. I have personally participated in the fieldwork reported herein.

Matthew R. Dumala, P.Eng.

95763

QMo 1246

Statement of Expenditures
Mouse 1-48 Mineral Claims
September 16, 2011



Labour

M. Dumala (geologist) August 6, 2011 – 1 day @ \$680/day	\$ 761.60
T. Denton (field assistant) August 6, 2011 – 1 day @ \$320/day	358.40
S. Dueck (field assistant) August 6, 2011 – 1 day @ \$320/day	358.40
A. Dodds (field assistant) August 6, 2011 – 1 day @ \$320/day	358.40
	<u>1,836.80</u>

Expenses (including management fee)

Field room and board – 4 days @ \$125/day	604.80
Fireweed Helicopters – 2.1 hrs Long Ranger plus fuel	4,371.57
ALS Chemex	<u>2,805.28</u>
	7,781.65

Total	<u>\$9,618.45</u>
-------	-------------------

APPENDIX II
CERTIFICATES OF ANALYSIS



ALS Canada Ltd.
 2103 Dollarton Hwy
 North Vancouver BC V7H 0A7
 Phone: 604 984 0221 Fax: 604 984 0218 www.alsglobal.com

To: **ATAC RESOURCES LTD.**

C/ O ARCHER, CATHRO & ASSOCIATES (1981) LIMITED

**1016- 510 W HASTINGS ST
 VANCOUVER BC V6B 1L8**

**Page: 1
 Finalized Date: 22- SEP- 2011
 Account: RCM**

CERTIFICATE WH11160060

Project: Mouse
 P.O. No.:
 This report is for 34 Soil samples submitted to our lab in Whitehorse, YT, Canada on 15- AUG- 2011.
 The following have access to data associated with this certificate:


ROB CARNE JULIA LANE	ANDREW CARNE JOAN MARIACHER	MATT DUMALA
-------------------------	--------------------------------	-------------

SAMPLE PREPARATION	
ALS CODE	DESCRIPTION
WEI- 21	Received Sample Weight
LOG- 22	Sample login - Rcd w/o BarCode
SCR- 41	Screen to - 180um and save both

ANALYTICAL PROCEDURES		
ALS CODE	DESCRIPTION	INSTRUMENT
Au- TL43	Trace Level Au - 25g AR	ICP- MS
ME- MS41	51 anal. aqua regia ICPMS	

To: **ATAC RESOURCES LTD.
 ATTN: MATT DUMALA
 C/ O ARCHER, CATHRO & ASSOCIATES (1981) LIMITED
 1016- 510 W HASTINGS ST
 VANCOUVER BC V6B 1L8**

This is the Final Report and supersedes any preliminary report with this certificate number. Results apply to samples as submitted. All pages of this report have been checked and approved for release.

Signature: 
 Colin Ramshaw, Vancouver Laboratory Manager



ALS Canada Ltd.
 2103 Dollarton Hwy
 North Vancouver BC V7H 0A7
 Phone: 604 984 0221 Fax: 604 984 0218 www.alsglobal.com

To: ATAC RESOURCES LTD.
 C/ O ARCHER, CATHRO & ASSOCIATES (1981)
 LIMITED
 1016- 510 W HASTINGS ST
 VANCOUVER BC V6B 1L8

Page: 2 - A
 Total # Pages: 2 (A - D)
 Plus Appendix Pages
 Finalized Date: 22- SEP- 2011
 Account: RCM

Project: Mouse

CERTIFICATE OF ANALYSIS WH11160060

Sample Description	Method Analyte Units LOR	WEI- 21	Au- TL43	ME- MS41	ME- MS41	ME- MS41	ME- MS41	ME- MS41	ME- MS41	ME- MS41	ME- MS41	ME- MS41	ME- MS41	ME- MS41	ME- MS41	
		Recvd Wt. kg	Au ppm	Ag ppm	Al %	As ppm	Au ppm	B ppm	Ba ppm	Be ppm	Bi ppm	Ca %	Cd ppm	Ce ppm	Co ppm	Cr ppm
		0.02	0.001	0.01	0.01	0.1	0.2	10	10	0.05	0.01	0.01	0.01	0.02	0.1	1
ZZ00220		0.32	0.007	1.38	1.12	11.5	<0.2	<10	1230	0.26	0.15	0.40	1.87	21.6	5.3	19
ZZ00221		0.40	0.004	0.54	1.13	10.7	<0.2	<10	210	0.16	0.15	0.13	0.16	23.3	4.5	20
ZZ00222		0.50	0.003	0.20	1.08	9.6	<0.2	<10	170	0.22	0.12	0.15	0.10	27.5	5.7	20
ZZ00223		0.52	0.005	0.35	1.65	15.1	<0.2	<10	380	0.47	0.24	0.10	0.35	30.4	11.5	26
ZZ00224		0.42	0.004	0.43	0.88	10.5	<0.2	<10	230	0.34	0.22	0.17	0.58	22.9	9.9	14
ZZ00225		0.42	0.004	1.05	1.64	14.3	<0.2	<10	90	0.33	0.22	0.07	0.21	23.7	6.9	25
ZZ00226		0.50	0.004	0.14	1.29	7.7	<0.2	<10	180	0.29	0.18	0.13	0.12	29.7	6.0	23
ZZ00227		0.42	0.004	0.07	0.91	50.7	<0.2	<10	150	0.27	0.28	0.21	0.26	42.0	12.5	15
ZZ00502		0.52	0.002	0.09	1.04	12.3	<0.2	<10	90	0.21	0.17	0.14	0.20	26.6	7.5	19
ZZ00503		0.56	0.003	0.09	1.08	9.2	<0.2	<10	200	0.31	0.17	0.19	0.15	38.1	9.3	19
ZZ00504		0.52	0.002	0.09	1.15	10.4	<0.2	<10	130	0.23	0.15	0.16	0.13	33.4	7.5	21
ZZ00505		0.58	0.002	0.05	1.22	9.2	<0.2	<10	140	0.27	0.16	0.16	0.13	30.8	7.3	21
ZZ00506		0.50	0.002	0.05	1.30	16.9	<0.2	<10	130	0.26	0.18	0.12	0.09	32.1	5.7	22
ZZ00507		0.60	0.002	0.07	1.07	7.6	<0.2	<10	130	0.24	0.12	0.14	0.11	31.2	6.6	19
ZZ00508		0.46	0.002	0.12	1.05	7.5	<0.2	<10	140	0.22	0.13	0.18	0.16	29.3	6.5	19
ZZ00607		0.32	0.008	0.33	2.86	47.9	<0.2	<10	1080	0.76	0.53	0.13	0.20	84.6	8.4	164
ZZ00608		0.34	0.005	0.91	0.75	20.1	<0.2	<10	1180	0.28	0.28	0.15	0.54	50.7	3.5	14
ZZ00609		0.42	0.005	1.50	0.39	44.7	<0.2	<10	1410	0.13	0.20	0.06	5.45	28.8	1.5	12
ZZ00610		0.32	0.005	3.06	0.77	18.3	<0.2	<10	3590	0.21	0.17	0.35	4.17	22.8	6.0	16
ZZ00611		0.42	0.005	1.57	0.26	17.8	<0.2	<10	2440	0.10	0.15	0.05	0.43	19.35	2.7	7
ZZ00612		0.36	0.002	0.08	1.13	12.9	<0.2	<10	90	0.24	0.24	0.06	0.10	25.1	4.6	17
ZZ00613		0.28	0.003	0.38	1.25	12.5	<0.2	<10	140	0.26	0.19	0.11	0.20	19.75	5.5	21
ZZ00614		0.30	0.003	0.30	1.11	10.9	<0.2	<10	170	0.25	0.15	0.14	0.20	20.0	5.8	20
ZZ01588		0.30	0.004	1.12	0.94	12.6	<0.2	<10	790	0.18	0.19	0.06	0.83	15.65	3.2	24
ZZ01589		0.36	0.001	0.83	0.18	27.8	<0.2	<10	780	0.09	0.20	0.01	0.09	25.0	0.2	6
ZZ01590		0.36	0.004	0.35	2.72	9.9	<0.2	<10	1740	0.93	0.21	0.42	1.25	71.5	18.3	151
ZZ01591		0.36	0.006	2.24	0.66	25.4	<0.2	<10	1390	0.20	0.22	0.08	0.55	20.6	1.9	18
ZZ01592		0.34	0.005	4.36	1.98	29.6	<0.2	<10	2460	0.56	0.22	0.24	3.37	22.3	5.8	50
ZZ01593		0.32	0.005	4.58	0.79	29.2	<0.2	<10	1640	0.37	0.22	0.78	9.59	22.5	9.6	26
ZZ01594		0.30	0.006	3.24	0.83	15.0	<0.2	<10	1010	0.29	0.16	0.73	12.60	25.4	11.2	26
ZZ01595		0.28	0.004	3.52	1.38	18.8	<0.2	<10	1910	0.32	0.28	0.16	1.23	25.4	4.8	26
ZZ01596		0.32	0.005	2.41	0.88	17.0	<0.2	<10	580	0.28	0.22	0.25	0.49	34.7	5.3	33
ZZ01597		0.40	0.007	9.01	0.75	36.3	<0.2	<10	810	0.22	0.22	0.13	0.25	30.0	1.8	34
ZZ01598		0.36	0.004	1.44	0.83	11.6	<0.2	<10	360	0.32	0.23	0.11	0.41	36.3	4.2	37



ALS Canada Ltd.
 2103 Dollarton Hwy
 North Vancouver BC V7H 0A7
 Phone: 604 984 0221 Fax: 604 984 0218 www.alsglobal.com

To: ATAC RESOURCES LTD.
 C/ O ARCHER, CATHRO & ASSOCIATES (1981)
 LIMITED
 1016- 510 W HASTINGS ST
 VANCOUVER BC V6B 1L8

Page: 2 - B
 Total # Pages: 2 (A - D)
 Plus Appendix Pages
 Finalized Date: 22- SEP- 2011
 Account: RCM

Project: Mouse

CERTIFICATE OF ANALYSIS WH11160060

Sample Description	Method Analyte Units LOR	ME- MS41	ME- MS41	ME- MS41	ME- MS41	ME- MS41	ME- MS41	ME- MS41	ME- MS41	ME- MS41	ME- MS41	ME- MS41	ME- MS41	ME- MS41	ME- MS41	ME- MS41
		Cs ppm	Cu ppm	Fe %	Ga ppm	Ge ppm	Hf ppm	Hg ppm	In ppm	K %	La ppm	Li ppm	Mg %	Mn ppm	Mo ppm	Na %
		0.05	0.2	0.01	0.05	0.05	0.02	0.01	0.005	0.01	0.2	0.1	0.01	5	0.05	0.01
ZZ00220		0.82	29.0	1.95	3.32	0.06	0.03	0.34	0.024	0.04	12.4	11.6	0.26	157	4.08	0.01
ZZ00221		0.74	23.0	1.98	3.81	0.05	0.02	0.18	0.021	0.07	12.7	10.0	0.29	100	2.99	<0.01
ZZ00222		0.65	25.2	2.06	3.43	0.06	0.03	0.08	0.018	0.03	14.9	9.5	0.30	150	1.00	<0.01
ZZ00223		1.33	32.6	3.30	4.93	0.07	0.03	0.13	0.029	0.05	15.3	12.9	0.33	428	1.55	0.01
ZZ00224		0.66	31.1	4.76	2.74	0.09	0.03	0.09	0.026	0.07	11.5	7.9	0.17	727	1.51	0.01
ZZ00225		1.27	16.7	3.02	5.53	0.06	0.02	0.09	0.024	0.04	12.5	16.6	0.26	212	1.46	0.01
ZZ00226		1.03	16.6	1.99	4.66	0.05	0.02	0.06	0.020	0.03	15.6	12.4	0.29	165	0.89	0.01
ZZ00227		0.72	31.7	3.19	3.38	0.07	0.03	0.08	0.022	0.05	20.0	14.6	0.30	663	2.05	0.01
ZZ00502		0.71	20.6	2.30	3.68	0.05	0.02	0.04	0.018	0.03	12.4	11.5	0.30	366	1.27	<0.01
ZZ00503		0.67	23.6	2.32	3.67	0.06	0.03	0.05	0.019	0.04	18.6	14.0	0.36	375	0.73	0.01
ZZ00504		0.63	24.2	2.31	3.85	0.07	0.03	0.03	0.018	0.03	16.3	11.4	0.34	213	0.71	0.01
ZZ00505		0.66	21.1	2.22	3.92	0.05	0.03	0.27	0.018	0.03	14.9	12.8	0.36	214	0.79	0.01
ZZ00506		0.91	18.9	2.15	4.73	0.05	0.02	0.05	0.019	0.04	15.8	13.0	0.31	158	0.82	0.01
ZZ00507		0.54	17.3	1.91	3.43	<0.05	0.02	0.03	0.014	0.03	14.6	11.2	0.30	197	0.57	<0.01
ZZ00508		0.57	20.0	1.86	3.49	0.05	0.02	0.04	0.016	0.03	14.3	11.5	0.33	209	0.68	0.01
ZZ00607		3.32	281	3.51	10.65	0.18	0.11	0.04	0.120	0.43	40.2	22.4	1.33	195	2.07	0.02
ZZ00608		1.02	50.4	2.06	3.14	0.10	0.02	0.12	0.030	0.10	26.4	10.8	0.21	129	17.10	0.01
ZZ00609		0.53	34.7	1.86	1.45	0.09	0.02	0.34	0.047	0.07	16.1	2.3	0.06	56	13.55	0.01
ZZ00610		0.79	69.4	2.30	1.77	0.07	0.06	0.60	0.029	0.04	14.5	7.3	0.14	196	11.15	0.01
ZZ00611		0.30	53.5	1.62	0.70	0.06	0.07	0.35	0.035	0.03	12.6	1.7	0.03	34	10.55	<0.01
ZZ00612		1.09	13.9	2.49	5.63	<0.05	<0.02	0.08	0.020	0.03	12.8	8.6	0.16	142	1.44	<0.01
ZZ00613		0.76	24.9	2.54	4.47	0.05	0.02	0.16	0.027	0.04	10.2	11.2	0.24	163	2.07	<0.01
ZZ00614		0.72	28.8	2.32	4.03	0.05	0.02	0.11	0.021	0.03	9.9	11.7	0.29	167	1.32	0.01
ZZ01588		0.80	38.3	2.03	4.01	<0.05	<0.02	0.12	0.029	0.04	8.8	3.0	0.07	57	5.39	0.01
ZZ01589		0.52	41.7	1.26	1.04	0.08	0.02	0.42	0.017	0.12	13.0	1.2	0.02	9	23.3	<0.01
ZZ01590		2.24	112.5	4.90	13.05	0.20	0.43	0.05	0.049	0.37	37.3	42.7	1.90	623	2.40	0.02
ZZ01591		0.90	53.0	1.90	2.04	0.08	0.02	0.31	0.041	0.09	11.9	4.7	0.10	56	14.75	0.01
ZZ01592		1.79	266	3.34	3.38	0.10	0.05	0.56	0.053	0.04	16.4	9.9	0.31	96	8.10	0.01
ZZ01593		1.21	114.5	2.86	1.68	0.10	0.09	0.87	0.040	0.06	17.3	4.4	0.08	165	13.20	0.01
ZZ01594		1.01	52.6	2.67	2.14	0.08	0.06	0.46	0.038	0.05	17.0	6.7	0.13	237	5.42	0.01
ZZ01595		2.01	54.2	2.48	4.63	0.07	0.02	0.41	0.037	0.05	14.6	9.4	0.20	112	6.29	0.02
ZZ01596		0.72	41.6	2.22	3.16	0.08	0.03	0.42	0.032	0.05	20.0	9.7	0.28	157	6.70	0.01
ZZ01597		1.37	50.3	2.13	2.12	0.16	0.03	1.54	0.040	0.06	24.3	3.2	0.08	62	13.50	0.01
ZZ01598		0.59	43.2	2.16	3.75	0.07	0.02	0.22	0.034	0.04	18.9	9.3	0.25	131	4.84	<0.01



ALS Canada Ltd.
 2103 Dollarton Hwy
 North Vancouver BC V7H 0A7
 Phone: 604 984 0221 Fax: 604 984 0218 www.alsglobal.com

To: ATAC RESOURCES LTD.
 C/ O ARCHER, CATHRO & ASSOCIATES (1981)
 LIMITED
 1016- 510 W HASTINGS ST
 VANCOUVER BC V6B 1L8

Page: 2 - C
 Total # Pages: 2 (A - D)
 Plus Appendix Pages
 Finalized Date: 22- SEP- 2011
 Account: RCM

Project: Mouse

CERTIFICATE OF ANALYSIS WH11160060

Sample Description	Method Analyte Units LOR	ME- MS41	ME- MS41	ME- MS41	ME- MS41	ME- MS41	ME- MS41	ME- MS41	ME- MS41	ME- MS41	ME- MS41	ME- MS41	ME- MS41	ME- MS41	ME- MS41	
		Nb	Ni	P	Pb	Rb	Re	S	Sb	Sc	Se	Sn	Sr	Ta	Te	Th
		ppm	ppm	ppm	ppm	ppm	ppm	%	ppm	ppm	ppm	ppm	ppm	ppm	ppm	ppm
		0.05	0.2	10	0.2	0.1	0.001	0.01	0.05	0.1	0.2	0.2	0.2	0.01	0.01	0.2
ZZ00220		0.29	34.1	1190	8.8	7.1	0.008	0.07	1.95	1.3	4.8	0.3	66.1	<0.01	0.04	0.4
ZZ00221		0.32	15.2	670	8.7	5.9	<0.001	0.03	1.54	1.3	1.6	0.3	25.5	<0.01	0.03	0.4
ZZ00222		0.62	16.4	630	6.7	5.1	<0.001	0.01	0.75	2.4	0.7	0.3	17.1	<0.01	0.03	1.6
ZZ00223		0.78	28.5	720	13.1	11.4	<0.001	0.04	0.89	3.4	0.8	0.5	15.7	0.01	0.05	1.8
ZZ00224		0.45	36.4	570	12.5	8.8	<0.001	0.03	0.98	4.0	1.0	0.3	16.8	0.01	0.05	2.9
ZZ00225		1.34	16.3	480	12.7	9.2	<0.001	0.03	0.70	2.7	0.9	0.5	9.4	0.01	0.05	2.7
ZZ00226		0.40	14.3	670	9.2	8.9	<0.001	0.02	0.50	1.8	0.7	0.4	14.3	<0.01	0.03	0.6
ZZ00227		0.30	24.6	600	21.3	8.9	<0.001	0.02	1.56	2.3	0.6	0.2	15.2	<0.01	0.04	6.7
ZZ00502		0.35	18.9	660	11.3	7.3	<0.001	0.01	0.79	1.5	0.4	0.3	11.8	<0.01	0.03	0.9
ZZ00503		0.59	21.0	650	11.1	6.1	<0.001	0.01	0.73	3.0	0.4	0.3	14.7	<0.01	0.02	4.2
ZZ00504		0.67	18.4	640	8.8	6.1	<0.001	0.01	0.69	2.9	0.5	0.3	12.8	<0.01	0.02	2.5
ZZ00505		0.62	19.0	640	9.4	6.3	<0.001	0.01	0.67	2.7	0.5	0.3	13.1	<0.01	0.02	1.8
ZZ00506		0.44	15.7	580	11.0	9.7	<0.001	0.01	0.69	1.9	0.4	0.4	11.5	<0.01	0.02	0.9
ZZ00507		0.54	15.2	640	7.9	5.4	<0.001	0.01	0.53	2.4	0.4	0.3	11.6	<0.01	0.02	1.7
ZZ00508		0.57	16.1	720	7.4	5.4	<0.001	0.01	0.55	2.4	0.4	0.3	14.2	<0.01	0.02	1.7
ZZ00607		0.86	46.0	2170	28.7	31.0	0.001	0.42	1.49	10.8	2.1	0.4	480	0.01	0.06	7.2
ZZ00608		0.30	13.6	1020	21.5	7.9	0.001	0.21	5.43	1.6	8.3	0.4	50.5	<0.01	0.06	1.0
ZZ00609		0.15	11.6	2700	12.2	5.3	0.011	0.21	6.97	3.1	12.6	0.3	145.5	<0.01	0.11	1.4
ZZ00610		0.30	38.4	1270	9.8	5.5	0.003	0.11	3.80	2.4	4.3	0.3	136.0	<0.01	0.08	2.1
ZZ00611		0.12	45.9	700	9.2	2.8	0.004	0.11	3.98	1.8	6.3	0.2	164.0	<0.01	0.09	3.5
ZZ00612		0.86	13.2	310	16.7	5.8	<0.001	0.02	1.14	1.9	0.6	0.6	10.6	<0.01	0.03	1.3
ZZ00613		0.54	19.2	730	9.8	5.8	<0.001	0.05	2.32	1.5	1.4	0.4	18.6	<0.01	0.05	0.4
ZZ00614		0.52	20.4	670	7.9	4.7	<0.001	0.04	0.90	1.8	1.0	0.4	15.2	<0.01	0.04	0.7
ZZ01588		0.35	24.5	1090	9.7	5.1	0.001	0.13	1.67	0.7	3.4	0.5	54.5	<0.01	0.08	<0.2
ZZ01589		0.11	2.1	760	13.1	7.3	0.051	0.27	7.05	1.9	9.8	0.3	71.7	<0.01	0.11	1.8
ZZ01590		1.56	57.2	1730	33.2	29.2	0.001	0.09	0.92	10.6	1.9	0.8	148.0	0.01	0.03	13.4
ZZ01591		0.15	11.1	1890	14.2	7.5	0.003	0.25	5.62	1.3	9.8	0.3	279	<0.01	0.10	0.3
ZZ01592		0.44	134.5	2350	13.6	7.0	0.001	0.10	2.28	3.7	7.8	0.5	324	0.01	0.09	1.2
ZZ01593		0.25	123.0	2640	18.8	6.7	0.003	0.13	3.51	2.9	9.5	0.6	161.5	0.01	0.07	1.8
ZZ01594		0.34	105.5	2050	9.5	5.7	0.002	0.10	1.90	3.0	5.6	0.4	81.3	0.01	0.07	1.3
ZZ01595		0.32	32.7	1790	17.2	9.2	0.002	0.14	2.20	0.8	4.3	0.6	77.1	<0.01	0.08	<0.2
ZZ01596		0.33	21.3	1680	11.8	5.1	0.004	0.08	2.93	2.2	6.5	0.4	90.8	<0.01	0.05	0.7
ZZ01597		0.26	8.9	3890	15.4	5.5	0.021	0.11	4.03	2.6	26.0	0.9	51.4	<0.01	0.08	1.3
ZZ01598		0.31	19.1	2080	13.2	4.4	0.001	0.05	2.37	1.6	4.0	0.4	36.2	<0.01	0.05	0.3

***** See Appendix Page for comments regarding this certificate *****



ALS Canada Ltd.
 2103 Dollarton Hwy
 North Vancouver BC V7H 0A7
 Phone: 604 984 0221 Fax: 604 984 0218 www.alsglobal.com

To: ATAC RESOURCES LTD.
 C/ O ARCHER, CATHRO & ASSOCIATES (1981)
 LIMITED
 1016- 510 W HASTINGS ST
 VANCOUVER BC V6B 1L8

Page: 2 - D
 Total # Pages: 2 (A - D)
 Plus Appendix Pages
 Finalized Date: 22- SEP- 2011
 Account: RCM

Project: Mouse

CERTIFICATE OF ANALYSIS WH11160060

Sample Description	Method Analyte Units LOR	ME- MS41	ME- MS41	ME- MS41	ME- MS41	ME- MS41	ME- MS41	ME- MS41	ME- MS41
		Ti %	Ti ppm	U ppm	V ppm	W ppm	Y ppm	Zn ppm	Zr ppm
		0.005	0.02	0.05	1	0.05	0.05	2	0.5
ZZ00220		0.016	0.31	2.78	38	0.36	10.00	181	0.5
ZZ00221		0.024	0.22	1.41	38	0.21	4.91	53	<0.5
ZZ00222		0.037	0.08	0.95	34	0.21	6.38	47	0.7
ZZ00223		0.032	0.15	1.45	45	0.45	10.45	70	0.7
ZZ00224		0.016	0.11	0.67	28	0.11	11.85	84	0.6
ZZ00225		0.035	0.13	0.86	49	0.27	3.85	48	0.7
ZZ00226		0.020	0.11	1.44	34	0.34	6.72	44	0.5
ZZ00227		0.011	0.08	0.65	19	0.09	5.52	92	1.4
ZZ00502		0.023	0.08	0.67	32	0.21	4.30	56	<0.5
ZZ00503		0.031	0.07	0.90	31	0.21	8.53	57	1.0
ZZ00504		0.038	0.08	0.84	35	0.20	6.94	53	0.6
ZZ00505		0.036	0.07	0.67	35	0.20	7.01	53	0.6
ZZ00506		0.026	0.10	0.72	36	0.21	5.54	47	0.6
ZZ00507		0.034	0.06	0.74	31	0.19	6.31	43	0.7
ZZ00508		0.033	0.07	0.85	30	0.25	5.76	52	0.5
ZZ00607		0.142	0.73	8.42	116	0.33	19.65	105	7.7
ZZ00608		0.021	0.88	4.65	60	0.35	7.79	50	<0.5
ZZ00609		0.009	1.16	4.65	32	0.25	6.80	49	0.8
ZZ00610		0.011	0.49	4.34	35	0.59	17.85	220	2.3
ZZ00611		0.006	0.57	2.54	25	0.30	8.54	140	4.7
ZZ00612		0.033	0.16	0.63	48	0.22	2.77	45	<0.5
ZZ00613		0.025	0.13	0.87	43	0.19	4.48	62	<0.5
ZZ00614		0.027	0.10	0.75	37	0.19	4.78	59	<0.5
ZZ01588		0.011	0.33	1.79	69	0.15	5.23	132	<0.5
ZZ01589		0.007	1.62	5.69	46	0.21	3.33	6	1.8
ZZ01590		0.221	0.54	5.86	122	0.33	14.40	392	37.5
ZZ01591		0.012	1.34	8.49	51	0.28	11.25	57	<0.5
ZZ01592		0.023	0.74	9.85	79	0.34	33.0	468	1.3
ZZ01593		0.011	0.64	7.57	33	0.62	34.5	766	3.4
ZZ01594		0.016	0.38	3.70	32	0.34	32.8	906	1.7
ZZ01595		0.011	0.66	6.07	47	0.37	13.95	145	<0.5
ZZ01596		0.035	0.27	4.77	52	0.49	11.80	71	0.8
ZZ01597		0.014	0.27	8.01	52	0.88	16.70	27	0.6
ZZ01598		0.019	0.14	4.10	51	0.22	9.76	69	0.5



ALS Canada Ltd.
2103 Dollarton Hwy
North Vancouver BC V7H 0A7
Phone: 604 984 0221 Fax: 604 984 0218 www.alsglobal.com

To: ATAC RESOURCES LTD.
C/ O ARCHER, CATHRO & ASSOCIATES (1981)
LIMITED
1016- 510 W HASTINGS ST
VANCOUVER BC V6B 1L8

Page: Appendix 1
Total # Appendix Pages: 1
Finalized Date: 22- SEP- 2011
Account: RCM

Project: Mouse

CERTIFICATE OF ANALYSIS WH11160060

Method	CERTIFICATE COMMENTS
ME- MS41	Gold determinations by this method are semi- quantitative due to the small sample weight used (0.5g).



ALS Canada Ltd.
 2103 Dollarton Hwy
 North Vancouver BC V7H 0A7
 Phone: 604 984 0221 Fax: 604 984 0218 www.alsglobal.com

To: **ATAC RESOURCES LTD.**
C/ O ARCHER, CATHRO & ASSOCIATES (1981) LIMITED
1016- 510 W HASTINGS ST
VANCOUVER BC V6B 1L8

Page: 1
 Finalized Date: 16- SEP- 2011
 Account: RCM

CERTIFICATE WH11158209

Project: Mouse
 P.O. No.:
 This report is for 3 Silt samples submitted to our lab in Whitehorse, YT, Canada on 15- AUG- 2011.
 The following have access to data associated with this certificate:

ROB CARNE JULIA LANE	ANDREW CARNE JOAN MARIACHER	MATT DUMALA
-------------------------	--------------------------------	-------------

SAMPLE PREPARATION	
ALS CODE	DESCRIPTION
WEI- 21	Received Sample Weight
LOG- 22	Sample login - Rcd w/o BarCode
SCR- 41	Screen to - 180um and save both

ANALYTICAL PROCEDURES		
ALS CODE	DESCRIPTION	INSTRUMENT
Au- ST43	Super Trace Au - 25g AR	ICP- MS
ME- MS41	51 anal. aqua regia ICPMS	

To: **ATAC RESOURCES LTD.**
ATTN: MATT DUMALA
C/ O ARCHER, CATHRO & ASSOCIATES (1981) LIMITED
1016- 510 W HASTINGS ST
VANCOUVER BC V6B 1L8

This is the Final Report and supersedes any preliminary report with this certificate number. Results apply to samples as submitted. All pages of this report have been checked and approved for release.

Signature: 
 Colin Ramshaw, Vancouver Laboratory Manager



ALS Canada Ltd.
 2103 Dollarton Hwy
 North Vancouver BC V7H 0A7
 Phone: 604 984 0221 Fax: 604 984 0218 www.alsglobal.com

To: ATAC RESOURCES LTD.
 C/ O ARCHER, CATHRO & ASSOCIATES (1981)
 LIMITED
 1016- 510 W HASTINGS ST
 VANCOUVER BC V6B 1L8

Page: 2 - A
 Total # Pages: 2 (A - D)
 Plus Appendix Pages
 Finalized Date: 16- SEP- 2011
 Account: RCM

Project: Mouse

CERTIFICATE OF ANALYSIS WH11158209

Sample Description	Method Analyte Units LOR	WEI- 21 Recvd Wt. kg	Au- ST43 Au ppm	ME- MS41 Ag ppm	ME- MS41 Al %	ME- MS41 As ppm	ME- MS41 Au ppm	ME- MS41 B ppm	ME- MS41 Ba ppm	ME- MS41 Be ppm	ME- MS41 Bi ppm	ME- MS41 Ca %	ME- MS41 Cd ppm	ME- MS41 Ce ppm	ME- MS41 Co ppm	ME- MS41 Cr ppm
		0.02	0.0001	0.01	0.01	0.1	0.2	10	10	0.05	0.01	0.01	0.01	0.02	0.1	1
ZZ00219		0.50	0.0036	0.40	1.16	9.4	<0.2	<10	150	0.19	0.14	0.14	0.28	23.5	5.0	20
ZZ00228		0.44	0.0031	0.10	1.00	14.1	<0.2	<10	150	0.26	0.18	0.17	0.20	27.9	10.3	17
ZZ00501		0.28	0.0163	0.96	1.04	17.0	<0.2	<10	970	0.33	0.14	0.88	5.82	22.3	13.5	14



ALS Canada Ltd.
 2103 Dollarton Hwy
 North Vancouver BC V7H 0A7
 Phone: 604 984 0221 Fax: 604 984 0218 www.alsglobal.com

To: ATAC RESOURCES LTD.
 C/ O ARCHER, CATHRO & ASSOCIATES (1981)
 LIMITED
 1016- 510 W HASTINGS ST
 VANCOUVER BC V6B 1L8

Page: 2 - B
 Total # Pages: 2 (A - D)
 Plus Appendix Pages
 Finalized Date: 16- SEP- 2011
 Account: RCM

Project: Mouse

CERTIFICATE OF ANALYSIS WH11158209

Sample Description	Method Analyte Units LOR	ME- MS41 Cs ppm 0.05	ME- MS41 Cu ppm 0.2	ME- MS41 Fe % 0.01	ME- MS41 Ga ppm 0.05	ME- MS41 Ge ppm 0.05	ME- MS41 Hf ppm 0.02	ME- MS41 Hg ppm 0.01	ME- MS41 In ppm 0.005	ME- MS41 K % 0.01	ME- MS41 La ppm 0.2	ME- MS41 Li ppm 0.1	ME- MS41 Mg % 0.01	ME- MS41 Mn ppm 5	ME- MS41 Mo ppm 0.05	ME- MS41 Na % 0.01
ZZ00219		0.77	22.1	2.02	3.88	0.05	0.02	0.10	0.019	0.03	12.4	9.4	0.30	156	1.58	<0.01
ZZ00228		0.67	19.9	2.36	3.32	0.06	0.02	0.08	0.018	0.05	14.6	11.1	0.31	499	0.91	0.01
ZZ00501		1.09	27.9	2.27	2.50	0.07	0.02	0.54	0.023	0.06	11.8	8.6	0.20	1290	2.92	0.02



ALS Canada Ltd.
 2103 Dollarton Hwy
 North Vancouver BC V7H 0A7
 Phone: 604 984 0221 Fax: 604 984 0218 www.alsglobal.com

To: ATAC RESOURCES LTD.
 C/ O ARCHER, CATHRO & ASSOCIATES (1981)
 LIMITED
 1016- 510 W HASTINGS ST
 VANCOUVER BC V6B 1L8

Page: 2 - C
 Total # Pages: 2 (A - D)
 Plus Appendix Pages
 Finalized Date: 16- SEP- 2011
 Account: RCM

Project: Mouse

CERTIFICATE OF ANALYSIS WH11158209

Sample Description	Method Analyte Units LOR	ME- MS41 Nb ppm 0.05	ME- MS41 Ni ppm 0.2	ME- MS41 P ppm 10	ME- MS41 Pb ppm 0.2	ME- MS41 Rb ppm 0.1	ME- MS41 Re ppm 0.001	ME- MS41 S % 0.01	ME- MS41 Sb ppm 0.05	ME- MS41 Sc ppm 0.1	ME- MS41 Se ppm 0.2	ME- MS41 Sn ppm 0.2	ME- MS41 Sr ppm 0.2	ME- MS41 Ta ppm 0.01	ME- MS41 Te ppm 0.01	ME- MS41 Th ppm 0.2
ZZ00219		0.37	15.3	780	6.6	6.8	<0.001	0.02	0.70	1.4	0.8	0.4	19.0	<0.01	0.03	0.5
ZZ00228		0.41	18.7	680	11.4	8.3	<0.001	0.02	0.91	1.9	0.5	0.3	14.4	<0.01	0.03	1.6
ZZ00501		0.26	34.0	1640	17.1	9.3	0.007	0.11	2.97	1.0	7.1	0.3	93.4	<0.01	0.04	0.2



ALS Canada Ltd.
 2103 Dollarton Hwy
 North Vancouver BC V7H 0A7
 Phone: 604 984 0221 Fax: 604 984 0218 www.alsglobal.com

To: ATAC RESOURCES LTD.
 C/ O ARCHER, CATHRO & ASSOCIATES (1981)
 LIMITED
 1016- 510 W HASTINGS ST
 VANCOUVER BC V6B 1L8

Page: 2 - D
 Total # Pages: 2 (A - D)
 Plus Appendix Pages
 Finalized Date: 16- SEP- 2011
 Account: RCM

Project: Mouse

CERTIFICATE OF ANALYSIS WH11158209

Sample Description	Method Analyte Units LOR	ME- MS41	ME- MS41	ME- MS41	ME- MS41	ME- MS41	ME- MS41	ME- MS41	ME- MS41
		Ti %	Tl ppm	U ppm	V ppm	W ppm	Y ppm	Zn ppm	Zr ppm
		0.005	0.02	0.05	1	0.05	0.05	2	0.5
ZZ00219		0.028	0.10	1.21	36	0.22	5.06	58	<0.5
ZZ00228		0.023	0.06	0.65	28	0.42	5.20	62	<0.5
ZZ00501		0.010	0.20	2.77	28	0.16	11.10	221	<0.5



ALS Canada Ltd.
2103 Dollarton Hwy
North Vancouver BC V7H 0A7
Phone: 604 984 0221 Fax: 604 984 0218 www.alsglobal.com

To: ATAC RESOURCES LTD.
C/ O ARCHER, CATHRO & ASSOCIATES (1981)
LIMITED
1016- 510 W HASTINGS ST
VANCOUVER BC V6B 1L8

Page: Appendix 1
Total # Appendix Pages: 1
Finalized Date: 16- SEP- 2011
Account: RCM

Project: Mouse

CERTIFICATE OF ANALYSIS WH11158209

Method	CERTIFICATE COMMENTS
ME- MS41	Gold determinations by this method are semi- quantitative due to the small sample weight used (0.5g).



ALS Canada Ltd.
 2103 Dollarton Hwy
 North Vancouver BC V7H 0A7
 Phone: 604 984 0221 Fax: 604 984 0218 www.alsglobal.com

To: **ATAC RESOURCES LTD.**
C/ O ARCHER, CATHRO & ASSOCIATES (1981) LIMITED
1016- 510 W HASTINGS ST
VANCOUVER BC V6B 1L8

Page: 1
 Finalized Date: 13- SEP- 2011
 Account: RCM

CERTIFICATE WH11156762

Project: Rackla - Mouse
 P.O. No.: Mouse
 This report is for 14 Rock samples submitted to our lab in Whitehorse, YT, Canada on 11- AUG- 2011.
 The following have access to data associated with this certificate:

ROB CARNE	ANDREW CARNE	MATT DUMALA
JULIA LANE	JOAN MARIACHER	

SAMPLE PREPARATION	
ALS CODE	DESCRIPTION
WEI- 21	Received Sample Weight
LOG- 22	Sample login - Rcd w/o BarCode
WSH- 21	"Wash" crushers
WSH- 22	"Wash" pulverizers
CRU- 31	Fine crushing - 70% <2mm
SPL- 21	Split sample - riffle splitter
CRU- QC	Crushing QC Test
PUL- QC	Pulverizing QC Test
PUL- 31	Pulverize split to 85% <75 um

ANALYTICAL PROCEDURES		
ALS CODE	DESCRIPTION	INSTRUMENT
Au- AA26	Ore Grade Au 50g FA AA finish	AAS
ME- MS61	48 element four acid ICP- MS	
Hg- CV41	Trace Hg - cold vapor/AAS	FIMS

To: **ATAC RESOURCES LTD.**
ATTN: MATT DUMALA
C/ O ARCHER, CATHRO & ASSOCIATES (1981) LIMITED
1016- 510 W HASTINGS ST
VANCOUVER BC V6B 1L8

This is the Final Report and supersedes any preliminary report with this certificate number. Results apply to samples as submitted. All pages of this report have been checked and approved for release.

Signature: 
 Colin Ramshaw, Vancouver Laboratory Manager



ALS Canada Ltd.
 2103 Dollarton Hwy
 North Vancouver BC V7H 0A7
 Phone: 604 984 0221 Fax: 604 984 0218 www.alsglobal.com

To: ATAC RESOURCES LTD.
 C/ O ARCHER, CATHRO & ASSOCIATES (1981)
 LIMITED
 1016- 510 W HASTINGS ST
 VANCOUVER BC V6B 1L8

Page: 2 - A
 Total # Pages: 2 (A - D)
 Plus Appendix Pages
 Finalized Date: 13- SEP- 2011
 Account: RCM

Project: Rackla - Mouse

CERTIFICATE OF ANALYSIS WH11156762

Sample Description	Method Analyte Units LOR	WEI- 21 Recvd Wt. kg	Au- AA26 Au ppm	ME- MS61 Ag ppm	ME- MS61 Al %	ME- MS61 As ppm	ME- MS61 Ba ppm	ME- MS61 Be ppm	ME- MS61 Bi ppm	ME- MS61 Ca %	ME- MS61 Cd ppm	ME- MS61 Ce ppm	ME- MS61 Co ppm	ME- MS61 Cr ppm	ME- MS61 Cs ppm	ME- MS61 Cu ppm
G0557588		0.02	0.01	0.01	0.01	0.2	10	0.05	0.01	0.01	0.02	0.01	0.1	1	0.05	0.2
G0557589		0.43	0.03	0.25	7.22	123.0	3250	4.28	1.18	0.70	1.21	163.5	15.4	168	4.29	728
G0557590		0.24	<0.01	0.05	0.28	13.3	2240	<0.05	0.01	0.05	0.10	0.82	0.3	12	0.10	9.3
G0557591		0.43	<0.01	0.16	1.45	12.7	590	0.52	0.01	0.02	0.81	3.82	1.2	29	0.19	137.5
G0557592		0.23	<0.01	1.88	3.75	23.3	7360	1.67	0.04	0.02	10.15	10.55	5.5	58	0.27	404
G0557593		0.27	<0.01	1.50	3.88	26.2	2430	1.76	0.05	0.02	7.15	7.73	4.2	60	0.14	333
G0557594		0.59	<0.01	0.21	1.49	9.9	1010	0.45	0.03	0.06	0.68	14.95	6.3	31	1.11	98.4
G0557595		0.68	<0.01	0.25	2.89	12.7	2330	0.73	0.07	0.02	0.09	17.10	2.4	51	1.52	329
G0557596		0.29	<0.01	0.41	2.54	15.0	1530	0.72	0.12	0.03	0.03	20.9	2.5	66	2.27	47.1
G0557597		0.33	<0.01	0.76	1.93	14.0	770	1.54	0.07	0.06	1.59	14.30	20.8	58	1.38	813
G0557598		0.21	<0.01	0.28	1.35	21.4	390	1.57	0.03	0.04	6.89	9.91	53.5	30	0.69	558
G0557599		0.35	<0.01	0.32	0.72	2.9	690	0.29	0.03	0.01	<0.02	6.57	0.2	26	0.93	3.2
G0557600		0.47	<0.01	0.99	2.35	217	5380	1.10	0.07	0.20	0.44	23.7	3.5	103	2.19	239
G285328		0.38	<0.01	0.33	2.56	170.0	6170	1.13	0.09	0.30	0.64	23.5	6.2	149	1.92	151.0
		0.63	<0.01	0.38	3.23	344	5670	1.52	0.08	0.52	1.01	30.6	10.0	155	1.98	218



ALS Canada Ltd.
 2103 Dollarton Hwy
 North Vancouver BC V7H 0A7
 Phone: 604 984 0221 Fax: 604 984 0218 www.alsglobal.com

To: ATAC RESOURCES LTD.
 C/ O ARCHER, CATHRO & ASSOCIATES (1981)
 LIMITED
 1016- 510 W HASTINGS ST
 VANCOUVER BC V6B 1L8

Page: 2 - B
 Total # Pages: 2 (A - D)
 Plus Appendix Pages
 Finalized Date: 13- SEP- 2011
 Account: RCM

Project: Rackla - Mouse

CERTIFICATE OF ANALYSIS WH11156762

Sample Description	Method Analyte Units LOR	ME- MS61	ME- MS61	ME- MS61	ME- MS61	Hg- CV41	ME- MS61	ME- MS61	ME- MS61	ME- MS61	ME- MS61	ME- MS61	ME- MS61	ME- MS61	ME- MS61	
		Fe %	Ga ppm	Ge ppm	Hf ppm	Hg ppm	In ppm	K %	La ppm	Li ppm	Mg %	Mn ppm	Mo ppm	Na %	Nb ppm	Ni ppm
G0557588		7.83	19.15	0.32	6.4	0.18	0.130	3.23	87.6	52.3	2.44	371	3.13	1.85	28.4	118.5
G0557589		0.39	0.32	<0.05	0.1	0.02	<0.005	0.02	0.6	0.9	0.02	38	0.35	0.02	0.4	5.7
G0557590		3.10	0.76	0.11	0.3	0.05	0.018	0.04	5.2	2.3	0.03	26	3.32	0.01	0.4	45.4
G0557591		6.24	2.53	0.20	0.6	0.35	0.016	0.03	11.9	19.0	0.01	43	5.98	0.06	0.8	209
G0557592		5.45	2.71	0.15	0.5	0.20	0.014	0.02	10.1	9.7	0.01	32	4.02	0.02	0.7	199.5
G0557593		2.17	3.14	0.11	0.4	0.09	0.020	0.33	8.8	5.7	0.08	48	0.58	0.02	2.0	43.2
G0557594		6.95	4.54	0.18	0.7	0.28	0.029	0.53	12.9	7.3	0.11	33	3.63	0.03	2.8	40.7
G0557595		3.30	5.09	0.12	0.7	0.23	0.062	0.52	17.7	7.7	0.11	21	2.75	0.03	3.4	95.7
G0557596		8.91	3.78	0.20	0.7	0.21	0.017	0.39	14.1	4.6	0.08	173	2.06	0.02	2.4	313
G0557597		19.90	2.14	0.29	0.3	0.08	0.009	0.18	9.5	3.2	0.10	1940	2.16	0.02	1.5	650
G0557598		0.35	2.62	0.06	0.1	0.18	0.006	0.32	3.9	2.8	0.05	28	0.90	0.01	1.2	1.6
G0557599		11.10	10.45	0.23	0.6	0.11	0.183	0.53	10.9	5.5	0.07	77	18.85	0.05	1.5	130.0
G0557600		11.75	9.10	0.28	0.5	0.25	0.134	0.44	10.5	4.1	0.07	119	29.6	0.06	1.3	151.5
G285328		15.40	9.45	0.39	0.6	0.29	0.250	0.48	13.5	4.2	0.06	185	29.6	0.05	1.3	166.5

***** See Appendix Page for comments regarding this certificate *****



ALS Canada Ltd.
 2103 Dollarton Hwy
 North Vancouver BC V7H 0A7
 Phone: 604 984 0221 Fax: 604 984 0218 www.alsglobal.com

To: ATAC RESOURCES LTD.
 C/ O ARCHER, CATHRO & ASSOCIATES (1981)
 LIMITED
 1016- 510 W HASTINGS ST
 VANCOUVER BC V6B 1L8

Page: 2 - C
 Total # Pages: 2 (A - D)
 Plus Appendix Pages
 Finalized Date: 13- SEP- 2011
 Account: RCM

Project: Rackla - Mouse

CERTIFICATE OF ANALYSIS WH11156762

Sample Description	Method Analyte Units LOR	ME- MS61	ME- MS61	ME- MS61	ME- MS61	ME- MS61	ME- MS61	ME- MS61	ME- MS61	ME- MS61	ME- MS61	ME- MS61	ME- MS61	ME- MS61	ME- MS61	
		P	Pb	Rb	Re	S	Sb	Sc	Se	Sn	Sr	Ta	Te	Th	Ti	Tl
		ppm	ppm	ppm	ppm	%	ppm	ppm	ppm	ppm	ppm	ppm	ppm	ppm	ppm	%
		10	0.5	0.1	0.002	0.01	0.05	0.1	1	0.2	0.2	0.05	0.05	0.2	0.005	0.02
G0557588		1980	119.5	159.5	<0.002	0.10	0.98	19.7	6	2.8	522	1.61	0.10	25.3	0.443	2.90
G0557589		150	<0.5	1.4	<0.002	0.06	0.22	0.4	1	<0.2	6.2	<0.05	<0.05	0.2	0.006	0.03
G0557590		1500	1.2	2.7	0.002	0.11	0.41	1.2	6	<0.2	17.0	<0.05	<0.05	0.9	0.008	0.06
G0557591		2940	2.3	2.2	<0.002	0.23	1.40	2.2	7	0.2	89.6	0.06	<0.05	1.6	0.044	0.13
G0557592		3440	3.1	1.5	<0.002	0.27	1.91	2.4	7	0.2	388	0.06	<0.05	1.3	0.049	0.18
G0557593		620	1.9	21.1	<0.002	0.02	0.31	2.9	3	0.4	35.1	0.14	<0.05	3.0	0.058	0.15
G0557594		2300	5.8	32.5	0.007	0.24	0.91	8.1	9	0.5	22.4	0.19	0.05	3.1	0.086	0.36
G0557595		1810	4.0	34.9	0.006	0.06	0.86	9.3	3	0.6	16.1	0.24	<0.05	3.0	0.097	0.27
G0557596		2970	4.2	26.5	<0.002	0.02	1.50	8.1	3	0.5	19.6	0.17	0.06	2.0	0.070	0.21
G0557597		1790	2.2	11.5	<0.002	0.02	0.84	3.0	3	0.2	14.0	0.09	0.05	1.4	0.040	0.11
G0557598		60	2.0	20.6	<0.002	0.03	0.55	2.0	2	0.3	6.8	0.07	<0.05	1.0	0.031	0.13
G0557599		7420	2.8	34.8	0.002	0.23	33.8	9.1	3	0.5	1115	0.09	0.06	3.6	0.037	0.37
G0557600		9790	4.0	29.7	0.002	0.18	29.4	9.2	5	0.4	2380	0.09	0.09	2.7	0.033	0.24
G285328		>10000	3.3	29.7	0.003	0.33	54.6	13.3	8	0.5	4390	0.09	0.09	4.2	0.038	0.44



ALS Canada Ltd.
 2103 Dollarton Hwy
 North Vancouver BC V7H 0A7
 Phone: 604 984 0221 Fax: 604 984 0218 www.alsglobal.com

To: ATAC RESOURCES LTD.
 C/ O ARCHER, CATHRO & ASSOCIATES (1981)
 LIMITED
 1016- 510 W HASTINGS ST
 VANCOUVER BC V6B 1L8

Page: 2 - D
 Total # Pages: 2 (A - D)
 Plus Appendix Pages
 Finalized Date: 13- SEP- 2011
 Account: RCM

Project: Rackla - Mouse

CERTIFICATE OF ANALYSIS WH11156762

Sample Description	Method Analyte Units LOR	ME- MS61	ME- MS61	ME- MS61	ME- MS61	ME- MS61	ME- MS61
		U	V	W	Y	Zn	Zr
		ppm	ppm	ppm	ppm	ppm	ppm
		0.1	1	0.1	0.1	2	0.5
G0557588		11.6	144	5.6	27.2	1110	265
G0557589		0.6	5	0.2	0.9	12	2.5
G0557590		7.0	100	0.3	12.5	147	15.9
G0557591		10.8	94	0.4	66.8	1030	26.2
G0557592		10.7	121	0.4	60.1	846	33.4
G0557593		2.0	52	0.4	16.3	349	20.2
G0557594		4.2	150	0.4	10.2	177	50.0
G0557595		6.0	148	0.5	10.7	54	52.5
G0557596		5.9	134	0.5	72.0	801	58.6
G0557597		6.2	54	0.3	52.6	1210	25.2
G0557598		0.8	58	0.2	1.3	2	12.6
G0557599		25.5	240	0.4	25.9	404	27.0
G0557600		20.9	358	0.3	35.8	375	26.3
G285328		35.0	608	0.3	61.7	796	30.2



ALS Canada Ltd.
2103 Dollarton Hwy
North Vancouver BC V7H 0A7
Phone: 604 984 0221 Fax: 604 984 0218 www.alsglobal.com

To: ATAC RESOURCES LTD.
C/ O ARCHER, CATHRO & ASSOCIATES (1981)
LIMITED
1016- 510 W HASTINGS ST
VANCOUVER BC V6B 1L8

Page: Appendix 1
Total # Appendix Pages: 1
Finalized Date: 13- SEP- 2011
Account: RCM

Project: Rackla - Mouse

CERTIFICATE OF ANALYSIS WH11156762

Method	CERTIFICATE COMMENTS
ME- MS61	REE's may not be totally soluble in this method.

APPENDIX III
ROCK SAMPLE DESCRIPTIONS

Rock Sample DescriptionsProject: MOUSEProperty: MOUSE

Sample Number: G0557588 Grid East: E Grid North: N Type: Float Dimension:
UTM: 405807 E UTM: 7138865 N Sample Width: Abundance: Common
Elevation: 1581 m

Comments: Brown weathered quartz feldspar porphyry, sandy texture with bitotie books (2 mm)

Sample Number: G0057589 Grid East: E Grid North: N Type: Float Dimension:
UTM: 405387 E UTM: 7138508 N Sample Width: Abundance: Common
Elevation: 1531 m

Comments: Milky white quartz with attached brown weathering sandy quartz feldspar porphyry

Sample Number: G0557590 Grid East: E Grid North: N Type: Float Dimension:
UTM: 405382 E UTM: 7138509 N Sample Width: Abundance: Common
Elevation: 1534 m

Comments: Milky white quartz with limonite alteration on surfaces and inclusions

Sample Number: G0557591 Grid East: E Grid North: N Type: Float Dimension:
UTM: 405380 E UTM: 7138507 N Sample Width: Abundance: Common
Elevation: 1536 m

Comments: Mikly white quartz with limonite alteration on surfaces and attached weathered quartz feldspar porphyry

Sample Number: G0557592 Grid East: E Grid North: N Type: Float Dimension:
UTM: 405380 E UTM: 7138507 N Sample Width: Abundance: Common
Elevation: 1536 m

Comments: Strongly weathered, limonite bearing quartz vein

Sample Number: G0557593 Grid East: E Grid North: N Type: Float Dimension:
UTM: 404833 E UTM: 7138414 N Sample Width: Abundance: Common
Elevation: 1583 m

Comments: Greenish brown gritty quartz feldspar porphyry with quartz veins containing limonite filled tension gashes

Rock Sample DescriptionsProject: MOUSEProperty: MOUSE

Sample Number: G0557594 Grid East: 404695 E Grid North: 7138381 N Type: Float Dimension:
UTM: 404695 E UTM: 7138381 N Sample Width: Abundance: Moderately common
Elevation: 1591 m

Comments: Banded bluish grey (brown weathering) volcanic with flow texture. Alternating sandy texture bands (~8 mm) with thin (~1 mm) strongly limonite altered massive layers

Sample Number: G0557595 Grid East: 404674 E Grid North: 7138355 N Type: Float Dimension:
UTM: 404674 E UTM: 7138355 N Sample Width: Abundance: Common
Elevation: 1593 m

Comments: greenish grey, fine grain clastic (volcanic), weak to moderate foliation containing fine pore space between grains

Sample Number: G0557596 Grid East: 404664 E Grid North: 7138304 N Type: Float Dimension:
UTM: 404664 E UTM: 7138304 N Sample Width: Abundance: Occasional
Elevation: 1579 m

Comments: Porous pale brown intensely limonite altered rock, no rep sample

Sample Number: G0557597 Grid East: 404664 E Grid North: 7138304 N Type: Float Dimension:
UTM: 404664 E UTM: 7138304 N Sample Width: Abundance: Occasional
Elevation: 1579 m

Comments: Moderately porous dark brown limonite altered volcanic as inclusions and clumps on milky/clear quartz vein

Sample Number: G0557598 Grid East: 404339 E Grid North: 7138285 N Type: Float Dimension:
UTM: 404339 E UTM: 7138285 N Sample Width: Abundance: Common
Elevation: 1463 m

Comments: Grey clastic rock, quartz healed, fragments of quartz feldspar porphyry and shale, banded texture, slightly talcy feel

Sample Number: G0557599 Grid East: 404246 E Grid North: 7138322 N Type: Float Dimension:
UTM: 404246 E UTM: 7138322 N Sample Width: Abundance: Occasional
Elevation: 1462 m

Comments: Dark brown weathered, brecciated quartz with shale fragments, massive appearance

Rock Sample DescriptionsProject: MOUSEProperty: MOUSE

Sample Number: G0557600 Grid East: 404199 E Grid North: 7138345 N Type: Float Dimension:
UTM: 404199 E UTM: 7138345 N Sample Width: Abundance: Occasional
Elevation: 1457 m

Comments: limonite healed breccia (vein fault) with clear/white cubic crystalline mineral, does not fizz (barite?), <2 mm

Sample Number: G285328 Grid East: 404197 E Grid North: 7138345 N Type: Float Dimension:
UTM: 404197 E UTM: 7138345 N Sample Width: Abundance: Occasional
Elevation: 1457 m

Comments: Vein fault, Intensely siderite/limonite altered, abundant pore space (siderite has glassy texture, black in colour, quite pervasive throughout sample)