

095704

GEOLOGICAL AND GEOCHEMICAL ASSESSMENT REPORT FOR SCOTT SOUTH LICENCES

MAYO MINING DISTRICT

YUKON TERRITORY



Claim Name		Grant No.
Scott	1-2	YC 02784 – YC 02785
Scott	35-36	YC 02786 – YC 02787

Owned by Overland Resources Yukon Limited and 18526 Yukon Inc

For work undertaken May 30th – June 9th, 2010

By Overland Resources Yukon Ltd.

NTS 105K/16

636000E, 6973000N UTM NAD83 Zone8

Prepared by: Rebecca Smart, Project Geologist

Supervisor: Hugh Alan Bresser, Managing Director

Date: April, 2011

TABLE OF CONTENTS

TABLE OF CONTENTS	1
INTRODUCTION.....	2
PROPERTY DESCRIPTION AND LOCATION.....	2
Claim Status.....	2
ACCESS, CLIMATE, LOCAL RESOURCES, INFRASTRUCTURE, PHYSIOGRAPHY.	4
Access	4
Climate.....	4
Local Resources.....	4
Infrastructure	4
Physiography	4
Regional Geology.....	5
Prospect Geology.....	5
Work Conducted 2010.....	6
Sampling Methodology	6
Assay Methodology	6
Previous Investigations.....	6
Current Work for Assessment.....	7
Conclusions and Recommendations	7
Statement of Qualifications.....	7

Appendices.

A: Assay Certificates

B: Claim Status

C: Statement of Expenditure

D: Maps

INTRODUCTION

This report has been prepared in accordance with the guidelines outlined by Yukon *Energy Mines Resources* (EMR) to detail the representation work undertaken and submitted for assessment for the of group of quartz mining claims collectively known by as the Scott South Claims by Overland Resources Limited (Overland) in 2010.

Claim Name		Grant No.
Scott	1-2	YC 02784 – YC 02785
Scott	35-36	YC 02786 – YC 02787

Table1. List of Quartz Mining Claims subject of application for certificate of work owned by 90% Overland Resources Yukon Limited and 10% 18526 Yukon Inc

Work submitted for assessment on the purposes to EMR for the Scott South Claims was conducted from May 30th to June 9th 2010 by Overland on quartz mining claims listed in the above table.

PROPERTY DESCRIPTION AND LOCATION

The Yukon Base Metal Project is situated 110 km north of the town of Faro, Yukon (Figure 1) and consists of 517 full and fractional Quartz Mineral Claims covering approximately 9 403 hectares within the Mayo Mining District (Figure 2). The Project is located within NTS map sheet 105K/16. The coordinates of the approximate center of the property are 62° 55' 33" N latitude and 132° 13' 7" W longitude (NAD 83, UTM Zone 8, 641 070 mE and 6 980 155 mN).

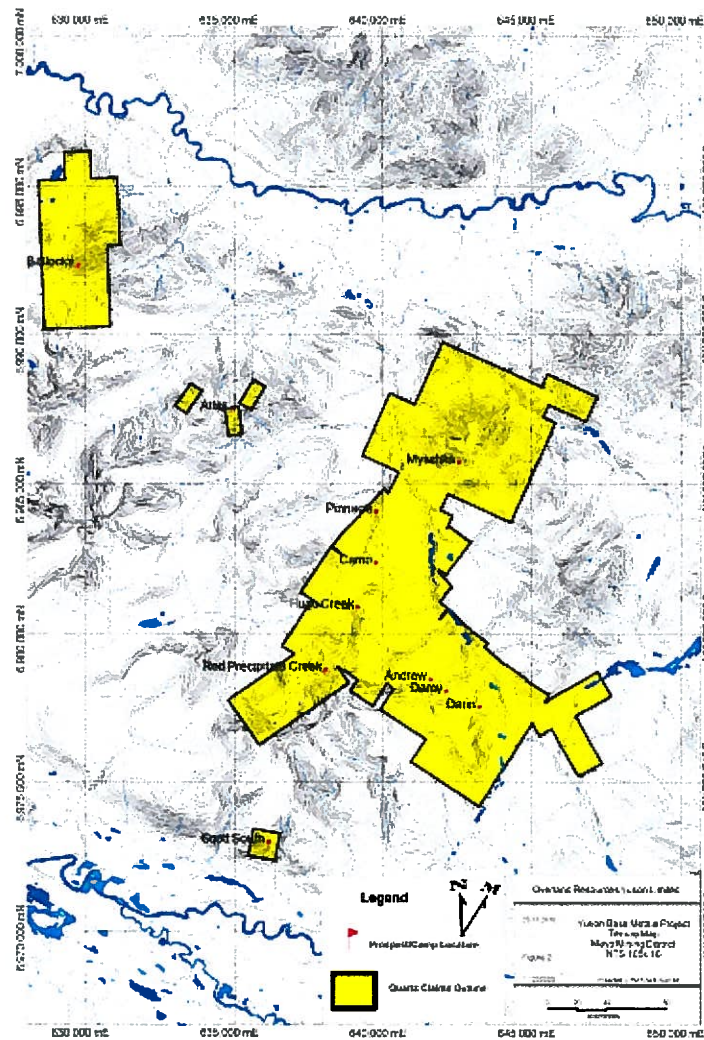


Claim Status

The Quartz Mineral Claims that comprise the Yukon Base Metal Project are owned 90% by Overland Resources Yukon Limited and 10% by 18526 Yukon Inc. Overland Resources Yukon Limited has the responsibility of permitting, claim maintenance, assessment filing and reporting and associated fees.

The claims lie on crown land, and surface rights belong to the crown. They do not lie within or near any park, special management zones, first nation settlement lands or land selections. However, they are situated within lands considered as traditional hunting and trapping areas by several first nation bands.

All claims are currently in good standing.



ACCESS, CLIMATE, LOCAL RESOURCES, INFRASTRUCTURE, PHYSIOGRAPHY

Access

The Yukon Base Metal Project is accessible by helicopter fixed-wing aircraft via a 400m unsealed airstrip located at 132°14'20" W and 62°56'20" N (UTM NAD83; 640,090mE and 6,982,690mN). Heavy equipment and bulk supplies can be delivered to the property via an 85km winter trail which was re-established in winter 2008 from the North Canol Road at Dragon Lake.

Climate

Temperatures at the Yukon Base Metal Project typically range from 8°C to 26°C in the summer and from -30°C to +6°C in the winter. Annual precipitation ranges from 120mm to 200mm, including 0.8m to 1.5m of snow accumulation in the winter months.

Local Resources

No local communities or towns are within 100km of the Yukon Base Metal Project and as such all resources must be brought into the project area. Personnel for construction, mining, exploration, labour and support are available in the communities of Faro, Ross River and Watson Lake as well as the Territorial capital of Whitehorse. Faro and Ross River are 100km southwest and 115km south of the property respectively.

Infrastructure

Infrastructure near the Yukon Base Metal Project includes the Canol Road and Robert Campbell Highway. The Canol Road extends for 458km from the Yukon-Northwest Territories border to Johnson's Crossing on the Alaska Highway south of Whitehorse. Northeast of the Pelly River at Dragon Lake, the Canol road comes to within 60km of the Yukon Base Metal Project where the winter access trail into the property begins.

Both Ross River and Faro are serviced by electrical transmission lines sourced from the Aishihik hydroelectric facility to the west.

Physiography

The Yukon Base Metal Project is located within the South Fork Range of the Yukon Plateau, east of the Tintina Trench and west of the MacKenzie Mountains. The property occupies the west side of a wide valley, where elevations range from 1,000m to 1,800m above sea level. Several east flowing creek valleys cut moderate slopes across the Yukon Base Metal Project.

The vegetation at the Yukon Base Metal Project is alpine to sub-alpine with lower elevations being dominated by black and white spruce stands, typical of the Northern Boreal Forest.

REGIONAL GEOLOGY

The property is located within the Selwyn Basin of the Northern Cordillera; a continental margin rift-fill and cover sedimentary sequence off the coast of ancestral North America. Stratigraphic units of Yukon Geologic Survey regional mapping have the property lying within the Yusezyu and Narchilla Formations of the NeoProterozoic to Lower Cambrian Hyland Group. These are thrust over the Devonian Earn Group, Prevost Formation mudstones. The Earn group is broadly folded along west by northwest to northwest trending fold axes. Regionally, the area has been intruded by Cretaceous felsic plutonism.

PROSPECT GEOLOGY

McConnell glaciation (~22 ka) has produced E-W trending striations on glaciated pavements.

The Mt. Selous Pluton intrudes to the west of the Scott South area. An irregular lobe of this pluton intrudes to the north of the claims. The intrusive unit is light grey, medium- to coarse-grained and equigranular, quartz and white feldspar-rich with accessory biotite and hornblende. They contain dark grey mafic enclaves or xenolithic material up to 20 cm across. The intrusives have a weak contact aureole expressed as a gradational biotite, plagioclase and possibly actinolite hornfels in mudstones within tens of meter of the contacts (unexposed).

Stratigraphy is generally shallowly dipping to the northeast to flat-lying with an overall north by northwest strike. No reliable younging directions were evident in the area although cleavage is typically steeper than bedding suggesting it is likely upright.

Sandstone is mapped at higher elevations and grades downwards into sandstone interbedded with grey finely laminated mudstone. Unit is grey, brown weathering, quartz dominated grain-supported fine- to coarse-grained poorly bedded and massive quartzites. They contain trace disseminated pyrite along fine discontinuous laminations giving the unit a gossanous surface staining.

Limestone is light to dark brownish grey, finely laminated and interbedded with very minor mudstone. The unit, at least 15 m thick, and underlies the sandstone.

To the south, the claims area is dominated by mudstone. This unit is black and weakly to moderately graphitic and pyritic often with cubic pore spaces at surface. It is thinly cm-scale bedded and tightly asymmetrically folded with steeply inclined roughly east-west trending fold axes and steeply plunging fold hinges. Rare shallowly plunging fold hinges have been observed which may represent an isoclinal early phase of deformation but are typically confined to a single bed and possibly soft-sediment deformation.

Veining is sporadic in outcrop and dominantly milky quartz with several generations of thin irregular massive to vuggy stockworks and rare trace pyrite.

WORK CONDUCTED 2010

Work included general prospecting, geological mapping, and geochemical rock sampling.

All information and data documented in this report was obtained by employees or consultants employed by Overland Resources Yukon Limited with the exception of geochemical analysis, which were outsourced to ALS Chemex of Vancouver B.C.

Sampling Methodology

Rock Samples

All rock samples were collected in the following manner

1. Location recorded by handheld GPS in UTM NAD83 Zone 8
2. Representative sample exceeding 400g of bedrock collected using a standard geological rock pick style hammer.
3. Samples sealed in clear plastic sample bags with a distinct sample ID
4. Samples dispatched to analytical laboratory.

Assay Methodology

Rock samples were sent to ALS Labs in Whitehorse where all samples were weighed, dried and crushed to better than 70% -2mm then split to 250g and pulverized to better than 85% passing 75 microns. Samples were processed by aqua regia digestion and analyzed for a full element suite using ICP-MS and ICP-AES.

Previous Investigations

Documented historical work in the area includes, soil sampling in 2008 by Overland.

Current Work for Assessment

Bedrock Geology Mapping

An Overland geologist spent 4 days (May 30st- June 2nd 2010) mapping at 1:20 000 scale over the Scott South area. Map included in appendices.

Rock Sampling

A total of 16 rock chip samples were collected during mapping. Sample locations and assay certificates included in appendices.

CONCLUSIONS AND RECOMMENDATIONS

Rock samples returned with mostly background ppm level base metals values with enrichments of up to 2450 ppm Zn and up to 3.04 ppm Ag in fault breccias cutting mudstone.

The geological setting of the Scott South area is comparable to that of the Andrew and Darcy Zinc deposits and the area remains prospective for numerous other styles of mineralization found in the Selwyn Basin.

STATEMENT OF QUALIFICATIONS

I, Rebecca Smart the author of this report hereby certify that:

1. I am a graduate Macquarie University (2006) with a Bachelor of Science degree in Geology and I have practiced my profession since 2007.

Dated at Vancouver, Canada, this 29 day of JUNE.



Appendix A: Assay Certificates



ALS Chemex

EXCELLENCE IN ANALYTICAL CHEMISTRY

ALS Canada Ltd.

2103 Dollarton Hwy

North Vancouver BC V7H 0A7

Phone: 604 984 0221 Fax: 604 984 0218 www.alschemex.com

To: **OVERLAND RESOURCES LTD.**
604 - 700 WEST PENDER STREET
VANCOUVER BC V6C 1G8

Page: 1
Finalized Date: 27-JUN-2010
Account: OVERRE

CERTIFICATE WH10074440

Project: YBMP

P.O. No.: #2

This report is for 61 Rock samples submitted to our lab in Whitehorse, YT, Canada on 7-JUN-2010.

The following have access to data associated with this certificate:

HUGH BRESSER

ALEX TOLSON

SAMPLE PREPARATION

ALS CODE	DESCRIPTION
WEI-21	Received Sample Weight
LOG-21	Sample logging - ClientBarCode
CRU-QC	Crushing QC Test
PUL-QC	Pulverizing QC Test
CRU-31	Fine crushing - 70% <2mm
SPL-21	Split sample - riffle splitter
PUL-31	Pulverize split to 85% <75 um


ANALYTICAL PROCEDURES

ALS CODE	DESCRIPTION	INSTRUMENT
ME-OG46	Ore Grade Elements - AquaRegia	ICP-AES
Pb-OG46	Ore Grade Pb - Aqua Regia	VARIABLE
Zn-OG46	Ore Grade Zn - Aqua Regia	VARIABLE
ME-MS41	51 anal. aqua regia ICPMS	

To: **OVERLAND RESOURCES LTD.**
ATTN: HUGH BRESSER
2ND FLOOR
675 MURRAY ST
WEST PERTH WA 6005
AUSTRALIA

This is the Final Report and supersedes any preliminary report with this certificate number. Results apply to samples as submitted. All pages of this report have been checked and approved for release.

Signature:


Colin Ramshaw, Vancouver Laboratory Manager



ALS Chemex
EXCELLENCE IN ANALYTICAL CHEMISTRY
 ALS Canada Ltd.

2103 Dollarton Hwy
 North Vancouver BC V7H 0A7
 Phone: 604 984 0221 Fax: 604 984 0218 www.alschemex.com

To: OVERLAND RESOURCES LTD.
 604 - 700 WEST PENDER STREET
 VANCOUVER BC V6C 1G8

Page: 2 - A
 Total # Pages: 3 (A - D)
 Plus Appendix Pages
 Finalized Date: 27-JUN-2010
 Account: OVERRE

Project: YBMP

CERTIFICATE OF ANALYSIS WH10074440

Sample Description	Method Analyte Units LOR	WEI-21	ME-MS41	ME-MS41	ME-MS41	ME-MS41	ME-MS41	ME-MS41	ME-MS41	ME-MS41	ME-MS41	ME-MS41	ME-MS41	ME-MS41	ME-MS41	
		Recvd Wt. kg	Ag ppm	Al %	As ppm	Au ppm	B ppm	Ba ppm	Be ppm	Bi ppm	Ca %	Cd ppm	Ce ppm	Co ppm	Cr ppm	Cs ppm
H031751		0.78	0.13	0.14	2.7	<0.2	<10	40	0.12	0.13	1.55	0.06	17.45	2.0	9	0.46
H031752		1.45	0.07	0.56	0.8	<0.2	<10	180	0.80	0.34	2.27	0.07	48.3	9.8	11	2.13
H031753		1.18	0.03	0.52	1.2	<0.2	<10	90	0.46	0.12	0.04	0.01	19.55	9.3	7	1.47
H031754		1.21	0.05	0.22	2.1	<0.2	<10	60	0.20	0.08	0.95	0.04	40.5	4.5	22	0.74
H031755		0.86	0.02	1.47	0.2	<0.2	<10	190	0.85	0.29	0.08	0.06	88.1	18.2	21	4.19
H031756		1.07	0.02	0.18	1.8	<0.2	<10	60	0.11	0.05	0.25	0.22	30.0	0.9	27	0.40
H031757		2.13	2.92	0.13	3.0	<0.2	<10	30	0.08	0.07	0.05	0.15	17.35	0.7	14	0.29
H031758		1.22	0.09	0.18	5.6	<0.2	<10	50	0.14	0.07	0.40	0.20	22.0	1.4	36	0.37
H031759		1.44	3.31	0.14	2.0	<0.2	<10	20	0.13	0.04	0.56	0.44	17.15	1.6	12	0.65
H031760		1.44	0.04	3.39	5.3	<0.2	<10	190	0.51	0.03	1.26	0.11	40.9	9.3	13	7.07
H031761		0.89	0.17	0.46	6.5	<0.2	<10	260	0.20	0.18	0.11	0.04	21.3	0.3	20	3.37
H031762		1.33	0.06	0.16	7.1	<0.2	<10	50	<0.05	0.06	0.01	0.02	6.01	1.7	37	1.38
H031763		0.97	0.06	1.22	3.4	<0.2	<10	320	0.43	0.05	1.15	0.07	30.3	6.7	25	5.17
H031764		1.19	0.08	1.64	2.7	<0.2	<10	50	0.56	0.09	3.62	0.05	61.0	3.4	23	1.32
H031765		1.18	0.04	2.26	9	<0.2	10	30	0.71	0.06	14.80	0.03	40.9	3.2	6	0.29
H031766		0.97	0.03	3.22	4	<0.2	10	50	0.93	0.07	10.90	0.04	48.0	2.4	7	0.52
H031767		1.14	0.05	0.40	4.9	<0.2	<10	80	0.09	0.03	0.55	0.19	8.53	2.8	33	0.36
H031551		1.42	86.2	0.19	23.2	<0.2	<10	90	0.23	0.20	0.37	57.0	8.32	11.9	15	1.00
H031601		0.81	0.19	0.04	11	<0.2	<10	40	0.05	0.01	>25.0	0.17	3.92	0.9	2	0.14
H031602		1.49	0.06	0.24	5.2	<0.2	<10	50	0.15	0.10	3.52	0.16	15.50	2.1	9	0.76
H031603		1.05	0.02	0.29	3.0	<0.2	<10	80	0.11	0.06	0.08	0.02	24.5	1.3	8	0.28
H031604		1.20	0.02	0.18	6.0	<0.2	<10	80	0.18	0.06	1.97	0.48	16.55	4.8	12	0.44
H031605		1.23	0.02	0.77	2.7	<0.2	<10	90	0.18	0.32	0.23	0.04	45.8	11.6	17	0.71
H031606		1.52	14.65	0.32	3.8	<0.2	<10	60	0.25	0.12	0.22	0.96	24.8	2.1	9	1.26
H031607		1.17	49.3	0.17	33.7	<0.2	<10	50	0.19	1.03	0.11	6.17	8.79	6.8	8	0.65
H031608		1.14	0.10	0.32	0.7	<0.2	<10	60	0.32	0.06	3.57	0.41	26.1	0.6	6	0.88
H031609		1.42	3.22	0.33	10.0	<0.2	<10	740	0.31	0.10	0.06	2.78	32.2	3.6	9	1.37
H031610		0.99	3.04	1.00	160.5	<0.2	<10	180	1.34	0.18	0.28	4.99	20.4	1.5	67	2.34
H031611		0.70	1.00	0.32	4.8	<0.2	<10	150	0.36	0.09	0.02	0.53	14.30	0.6	29	1.63
H031612		0.83	0.27	0.19	32.6	<0.2	<10	110	0.22	0.22	0.01	0.48	8.56	0.6	25	0.92
H031613		0.97	0.91	0.47	16.6	<0.2	<10	110	0.55	0.12	0.06	2.57	8.50	1.0	30	1.51
H031614		1.02	5.45	0.34	35.3	<0.2	<10	200	0.35	0.82	0.15	0.57	12.35	1.1	37	1.64
H031615		1.03	1.86	0.13	36.6	<0.2	<10	30	0.14	0.22	0.06	8.33	2.34	0.7	18	0.27
H031616		1.04	0.39	0.03	12	<0.2	<10	30	0.22	0.01	10.85	21.4	2.55	2.0	11	0.33
H031617		0.78	1.02	0.43	5.7	<0.2	<10	200	0.37	0.13	0.31	2.53	9.99	0.5	108	1.80
H031618		0.89	1.74	0.42	29.0	<0.2	<10	250	0.47	0.22	1.69	29.1	12.20	2.4	128	1.26
H031619		0.99	0.43	0.14	8.5	<0.2	<10	60	0.33	0.02	0.44	12.40	5.49	10.6	41	0.33
H031620		0.69	0.35	0.18	9.4	<0.2	<10	40	0.19	0.02	0.08	0.46	4.82	0.7	52	0.70
H031621		0.80	1.46	0.19	60.1	<0.2	<10	120	0.16	0.17	0.05	0.92	8.37	0.8	21	0.58
H031651		1.01	0.04	1.00	18.0	<0.2	<10	50	0.23	0.16	0.23	0.12	37.9	1.2	14	1.60



ALS Chemex
EXCELLENCE IN ANALYTICAL CHEMISTRY
 ALS Canada Ltd.

2103 Dollarton Hwy
 North Vancouver BC V7H 0A7
 Phone: 604 984 0221 Fax: 604 984 0218 www.alschemex.com

To: OVERLAND RESOURCES LTD.
 604 - 700 WEST PENDER STREET
 VANCOUVER BC V6C 1G8

Page: 2 - D
 Total # Pages: 3 (A - D)
 Plus Appendix Pages
 Finalized Date: 27-JUN-2010
 Account: OVERRE

Project: YBMP

CERTIFICATE OF ANALYSIS WH10074440

Sample Description	Method Analyte Units LOR	ME-MS41	ME-MS41	ME-MS41	ME-MS41	ME-MS41	ME-MS41	ME-MS41	Pb-OG46	Zn-OG46
		Tl	U	V	W	Y	Zn	Zr	Pb	Zn
		ppm	ppm	ppm	ppm	ppm	ppm	ppm	%	%
		0.02	0.05	1	0.05	0.05	2	0.5	0.001	0.001
H031751		0.03	0.16	1	0.07	2.93	22	2.2		
H031752		0.07	0.47	15	0.27	5.27	32	2.8		
H031753		0.04	0.11	8	<0.05	2.66	36	1.1		
H031754		0.04	0.57	2	<0.05	4.35	14	6.3		
H031755		0.12	0.44	16	0.08	5.65	64	2.9		
H031756		0.03	0.19	2	<0.05	1.45	51	2.2		
H031757		0.02	0.13	1	<0.05	0.89	17	2.9	1.570	
H031758		0.02	0.18	2	<0.05	1.50	39	2.5		
H031759		0.02	0.14	1	<0.05	1.43	190	2.8		
H031760		0.35	0.79	61	0.21	15.10	48	10.2		
H031761		0.13	2.36	131	0.61	4.80	9	10.0		
H031762		0.03	0.33	4	0.05	0.81	4	0.6		
H031763		0.02	1.11	27	0.31	10.35	21	8.4		
H031764		0.04	1.37	11	0.58	14.90	8	8.6		
H031765		<0.02	1.15	5	0.41	10.80	5	7.0		
H031766		<0.02	1.19	4	0.43	10.35	3	6.3		
H031767		<0.02	0.13	17	0.12	2.89	16	1.2		
H031551		0.03	0.23	1	<0.05	2.94	>10000	3.6	>20.0	1.900
H031601		<0.02	0.37	1	<0.05	2.08	236	0.5		
H031602		0.03	0.33	1	<0.05	5.66	45	4.3		
H031603		0.02	0.33	1	<0.05	1.35	6	4.0		
H031604		0.03	0.15	1	<0.05	3.73	117	1.9		
H031605		0.03	0.61	10	<0.05	5.38	39	9.0		
H031606		0.13	0.35	2	<0.05	1.84	240	6.1	11.85	
H031607		0.19	0.14	1	<0.05	1.16	1820	2.8	>20.0	
H031608		0.04	0.13	1	<0.05	5.76	98	3.4		
H031609		0.05	0.50	2	<0.05	2.21	1220	5.5	1.670	
H031610		0.30	30.5	1400	0.52	30.4	880	9.1		
H031611		0.35	5.06	641	0.45	3.62	201	6.5		
H031612		0.14	2.11	262	0.21	1.87	82	11.6		
H031613		0.20	7.97	359	0.21	5.21	380	6.0		
H031614		0.28	5.13	323	0.22	5.80	251	7.4		
H031615		0.04	3.41	62	0.12	5.19	449	2.0		
H031616		0.03	0.37	40	0.10	9.02	1570	2.6		
H031617		0.65	7.18	800	0.24	14.55	240	13.0		
H031618		0.51	11.80	428	0.27	17.60	891	10.6		
H031619		0.19	3.23	120	0.11	15.20	757	4.1		
H031620		0.24	4.26	158	0.10	4.70	204	5.4		
H031621		0.15	2.75	139	0.21	4.54	174	4.2		
H031651		0.11	2.46	6	0.69	10.60	55	16.9		



ALS Chemex

EXCELLENCE IN ANALYTICAL CHEMISTRY

ALS Canada Ltd.

2103 Dollarton Hwy
North Vancouver BC V7H 0A7

Phone: 604 984 0221 Fax: 604 984 0218 www.alschemex.com

To: OVERLAND RESOURCES LTD.
604 - 700 WEST PENDER STREET
VANCOUVER BC V6C 1G8

Page: 3 - A
Total # Pages: 3 (A - D)
Plus Appendix Pages
Finalized Date: 27-JUN-2010
Account: OVERRE

Project: YBMP

CERTIFICATE OF ANALYSIS WH10074440

Sample Description	Method Analyte Units LOR	WEI-21	ME-MS41	ME-MS41	ME-MS41	ME-MS41	ME-MS41	ME-MS41	ME-MS41	ME-MS41	ME-MS41	ME-MS41	ME-MS41	ME-MS41	ME-MS41	ME-MS41
		Recvd Wt. kg	Ag ppm	Al %	As ppm	Au ppm	B ppm	Ba ppm	Be ppm	Bi ppm	Ca %	Cd ppm	Ce ppm	Co ppm	Cr ppm	Cs ppm
		0.02	0.01	0.01	0.1	0.2	10	10	0.05	0.01	0.01	0.01	0.02	0.1	1	0.05
H031652		0.88	0.06	1.28	9.1	<0.2	<10	80	0.31	0.25	0.39	0.08	34.9	4.5	9	3.02
H031653		0.63	0.64	1.21	52.5	<0.2	<10	370	0.69	0.34	0.92	0.18	64.8	0.6	23	14.00
H031654		0.88	0.03	0.12	5.7	<0.2	<10	20	<0.05	0.05	0.01	0.05	2.44	0.3	17	0.80
H031655		1.69	0.10	1.98	17.6	<0.2	<10	140	0.66	0.16	1.27	0.14	31.2	9.3	44	1.54
H031656		0.60	0.04	2.86	2.0	<0.2	<10	70	0.63	0.06	5.75	0.08	62.6	3.1	8	0.47
H031657		1.17	0.03	3.09	2.8	<0.2	<10	460	0.24	0.05	1.16	0.07	43.3	12.3	13	4.57
H031658		1.35	2.11	0.39	237	<0.2	<10	70	0.32	0.26	0.03	2.58	9.07	18.9	17	4.25
H031659		0.79	0.72	0.46	3.4	<0.2	<10	170	0.33	0.06	1.12	1.89	18.15	0.5	96	1.55
H031660		1.04	0.10	1.56	9.7	<0.2	<10	300	0.26	0.09	0.10	0.11	58.7	3.5	20	3.17
H031661		1.74	0.87	0.34	>10000	<0.2	<10	70	0.11	2.26	0.04	0.93	8.63	9.5	13	0.33
H031662		0.78	0.21	2.43	46.0	<0.2	<10	310	0.35	0.25	0.04	0.17	72.1	3.9	50	7.87
H031663		0.94	0.24	1.36	27.9	<0.2	<10	200	0.21	0.18	0.02	0.03	57.4	1.5	18	2.45
H031664		0.79	0.41	0.15	5.9	<0.2	<10	30	0.07	0.04	0.18	0.80	19.25	0.7	9	0.30
H031701		0.75	0.05	1.88	16.1	<0.2	<10	230	0.59	0.29	0.04	0.08	99.4	6.5	4	8.35
H031702		0.80	0.03	0.98	5.6	<0.2	<10	120	0.17	0.08	0.03	0.09	31.9	5.5	15	3.89
H031703		0.82	0.07	0.23	6.3	<0.2	<10	30	0.05	0.84	0.03	0.03	9.04	0.5	12	0.45
H031704		1.07	0.02	0.11	10.1	<0.2	<10	30	<0.05	0.06	0.01	0.01	11.10	0.3	13	0.30
H031705		0.67	0.07	1.76	2.6	<0.2	<10	230	0.55	0.10	0.93	0.09	16.65	4.8	20	1.46
H031706		1.07	0.07	0.08	724	<0.2	<10	140	0.05	0.03	0.03	0.08	3.69	1.1	13	0.83
H031707		0.82	0.06	0.78	20.3	<0.2	<10	170	0.14	0.05	0.59	0.31	16.40	5.6	37	0.76
H031708		1.02	0.03	0.30	7.9	<0.2	<10	100	0.08	0.03	0.16	0.07	7.94	2.0	17	0.43



ALS Chemex
EXCELLENCE IN ANALYTICAL CHEMISTRY
 ALS Canada Ltd.

2103 Dollarton Hwy
 North Vancouver BC V7H 0A7
 Phone: 604 984 0221 Fax: 604 984 0218 www.alschemex.com

To: OVERLAND RESOURCES LTD.
 604 - 700 WEST PENDER STREET
 VANCOUVER BC V6C 1G8

Page: 3 - B
 Total # Pages: 3 (A - D)
 Plus Appendix Pages
 Finalized Date: 27-JUN-2010
 Account: OVERRE

Project: YBMP

CERTIFICATE OF ANALYSIS WH10074440

Sample Description	Method Analyte Units LOR	ME-MS41	ME-MS41	ME-MS41	ME-MS41	ME-MS41	ME-MS41	ME-MS41	ME-MS41	ME-MS41	ME-MS41	ME-MS41	ME-MS41	ME-MS41	ME-MS41	
		Cu ppm	Fe %	Ga ppm	Ge ppm	Hf ppm	Hg ppm	In ppm	K %	La ppm	Li ppm	Mg %	Mn ppm	Mo ppm	Na %	Nb ppm
		0.2	0.01	0.05	0.05	0.02	0.01	0.005	0.01	0.2	0.1	0.01	5	0.01	0.05	
H031652		9.9	2.25	6.15	0.09	0.18	<0.01	0.021	0.14	17.3	25.9	0.40	136	0.65	0.10	0.88
H031653		78.2	1.10	4.41	0.13	0.13	<0.01	0.038	4.47	34.7	11.6	0.12	70	6.83	0.04	0.09
H031654		5.7	0.64	0.79	<0.05	<0.02	<0.01	0.005	0.03	1.4	3.3	0.05	43	0.28	0.01	0.07
H031655		59.2	2.06	6.97	0.12	0.18	<0.01	0.010	0.21	16.8	22.6	0.63	185	8.92	0.15	2.12
H031656		11.2	0.44	7.83	0.08	0.22	<0.01	<0.005	0.08	29.9	3.4	0.10	128	0.22	0.31	1.31
H031657		9.8	4.25	10.25	0.13	0.11	<0.01	0.028	1.06	20.2	36.4	1.23	496	1.04	0.21	0.72
H031658		235	11.15	0.84	0.15	0.05	0.02	0.062	0.06	5.9	0.7	0.02	254	18.30	<0.01	0.15
H031659		53.9	0.65	1.79	0.14	0.16	<0.01	0.009	0.12	16.9	4.4	0.21	42	13.55	<0.01	0.85
H031660		10.1	2.98	5.03	0.07	0.14	<0.01	0.042	0.16	27.5	28.1	0.64	138	2.48	0.03	0.05
H031661		12.0	1.51	0.57	<0.05	0.06	<0.01	0.090	0.05	4.0	4.9	0.02	24	0.68	<0.01	0.05
H031662		28.1	4.59	8.01	0.10	0.11	0.01	0.043	0.22	36.8	23.4	0.99	286	2.93	0.03	<0.05
H031663		7.3	2.65	4.40	0.06	0.12	<0.01	0.023	0.17	27.8	15.7	0.58	204	3.29	0.01	<0.05
H031664		2.5	0.33	0.50	<0.05	0.08	0.28	0.008	0.10	9.7	0.6	0.01	141	0.20	<0.01	<0.05
H031701		17.2	3.19	4.03	0.08	0.15	0.01	0.005	0.34	51.4	39.5	0.46	109	0.95	0.03	0.16
H031702		9.1	2.00	3.00	<0.05	0.05	<0.01	0.009	0.13	14.4	21.8	0.27	162	0.30	0.01	0.17
H031703		4.0	1.06	0.75	<0.05	0.03	<0.01	0.019	0.03	4.1	2.9	0.06	64	0.20	0.01	0.33
H031704		6.9	0.30	0.30	<0.05	0.05	<0.01	<0.005	0.06	5.6	0.7	0.01	30	0.16	<0.01	0.05
H031705		32.5	1.70	5.03	0.09	0.05	<0.01	0.016	0.18	8.3	23.8	0.82	379	0.73	0.08	0.69
H031706		3.1	0.90	0.29	<0.05	0.02	<0.01	<0.005	0.04	1.6	0.8	0.01	43	0.32	<0.01	0.09
H031707		7.9	1.42	3.43	0.07	0.11	<0.01	0.009	0.08	7.5	9.8	0.39	195	0.53	0.08	1.32
H031708		8.0	1.09	1.27	<0.05	<0.02	<0.01	0.007	0.04	3.6	6.3	0.23	118	0.53	0.01	1.07



ALS Chemex

EXCELLENCE IN ANALYTICAL CHEMISTRY

ALS Canada Ltd.

2103 Dollarton Hwy
North Vancouver BC V7H 0A7

Phone: 604 984 0221 Fax: 604 984 0218 www.alschemex.com

To: OVERLAND RESOURCES LTD.
604 - 700 WEST PENDER STREET
VANCOUVER BC V6C 1G8

Page: 3 - C
Total # Pages: 3 (A - D)
Plus Appendix Pages
Finalized Date: 27-JUN-2010
Account: OVERRE

Project: YBMP

CERTIFICATE OF ANALYSIS WH10074440

Sample Description	Method	ME-MS41	ME-MS41	ME-MS41	ME-MS41	ME-MS41	ME-MS41	ME-MS41	ME-MS41	ME-MS41	ME-MS41	ME-MS41	ME-MS41	ME-MS41	ME-MS41	
	Analyte	Ni	P	Pb	Rb	Re	S	Sb	Sc	Se	Sn	Sr	Ta	Te	Th	Ti
Units	ppm	ppm	ppm	ppm	ppm	%	ppm	ppm	ppm	ppm	ppm	ppm	ppm	ppm	ppm	%
LOR	0.2	10	0.2	0.1	0.001	0.01	0.05	0.1	0.2	0.2	0.2	0.2	0.01	0.01	0.2	0.005
H031652		3.0	510	12.0	12.7	<0.001	0.56	0.75	8.9	0.6	0.6	23.0	0.01	0.02	11.1	0.071
H031653		2.4	6210	23.2	30.2	0.010	0.10	2.51	2.7	8.5	0.2	33.5	0.01	0.11	15.1	<0.005
H031654		1.2	60	3.6	2.6	<0.001	<0.01	0.37	0.4	0.5	<0.2	1.2	<0.01	0.01	0.9	<0.005
H031655		21.0	790	8.8	15.5	0.005	0.67	0.68	4.3	0.9	0.5	137.0	0.01	0.13	5.5	0.199
H031656		9.6	1110	10.6	4.5	<0.001	0.06	0.12	0.8	0.3	0.6	206	0.02	<0.01	13.1	0.114
H031657		3.2	800	7.5	60.5	<0.001	0.02	0.10	6.7	0.2	1.7	61.7	0.01	0.01	8.6	0.374
H031658		356	1110	181.0	5.3	0.012	0.03	19.15	2.6	15.5	12.3	9.3	<0.01	0.12	2.0	0.005
H031659		21.3	4770	6.3	9.2	0.006	0.02	2.21	3.8	16.0	0.3	24.8	0.01	0.05	1.6	0.033
H031660		32.0	560	24.0	13.3	0.001	0.03	1.07	2.4	0.5	0.2	17.6	<0.01	0.02	9.7	<0.005
H031661		14.4	260	38.8	3.3	0.001	0.54	20.5	0.7	3.1	0.9	5.3	<0.01	0.38	1.9	<0.005
H031662		20.0	430	22.0	15.9	0.003	0.21	1.96	4.9	0.8	0.6	15.4	<0.01	0.04	12.2	0.008
H031663		7.1	360	31.2	12.8	0.001	0.02	1.27	1.9	1.1	1.2	10.7	<0.01	0.03	6.7	<0.005
H031664		1.2	70	1200	5.2	<0.001	0.02	0.44	0.3	<0.2	<0.2	10.1	<0.01	<0.01	2.4	<0.005
H031701		15.8	370	11.0	20.1	0.001	0.12	0.27	0.7	0.3	<0.2	13.4	<0.01	0.01	25.6	0.009
H031702		14.6	120	13.2	8.5	<0.001	0.05	0.22	1.3	<0.2	0.2	6.7	<0.01	<0.01	9.1	0.020
H031703		1.9	110	8.6	2.4	<0.001	0.02	0.39	0.4	<0.2	0.3	5.5	<0.01	0.02	4.3	0.008
H031704		1.1	50	2.3	3.2	<0.001	<0.01	0.31	0.2	<0.2	<0.2	1.1	<0.01	<0.01	1.5	<0.005
H031705		12.5	1050	6.6	12.2	<0.001	0.40	0.99	1.7	0.4	0.4	130.0	<0.01	0.03	4.6	0.067
H031706		3.6	160	3.4	3.2	<0.001	0.02	8.76	0.6	0.2	<0.2	7.1	<0.01	0.04	0.5	<0.005
H031707		10.6	560	12.7	5.9	<0.001	0.10	3.35	2.0	0.2	0.6	37.9	0.01	0.01	2.3	0.175
H031708		4.0	270	2.7	2.3	<0.001	0.08	0.56	0.8	0.2	0.2	14.1	<0.01	0.01	1.0	0.047



ALS Chemex

EXCELLENCE IN ANALYTICAL CHEMISTRY

ALS Canada Ltd.

2103 Dollarton Hwy

North Vancouver BC V7H 0A7

Phone: 604 984 0221 Fax: 604 984 0218 www.alschemex.com

To: OVERLAND RESOURCES LTD.

604 - 700 WEST PENDER STREET

VANCOUVER BC V6C 1G8

Page: 3 - D

Total # Pages: 3 (A - D)

Plus Appendix Pages

Finalized Date: 27-JUN-2010

Account: OVERRE

Project: YBMP

CERTIFICATE OF ANALYSIS WH10074440

Sample Description	Method Analyte Units LOR	ME-MS41	ME-MS41	ME-MS41	ME-MS41	ME-MS41	ME-MS41	ME-MS41	Pb-OG46	Zn-OG46
		Ti	U	V	W	Y	Zn	Zr	Pb	Zn
		ppm	ppm	ppm	ppm	ppm	ppm	ppm	%	%
		0.02	0.05	1	0.05	0.05	2	0.5	0.001	0.001
H031652		0.06	1.70	31	0.35	15.85	22	5.2		
H031653		0.24	7.92	57	0.09	40.1	11	5.4		
H031654		0.02	0.20	3	<0.05	0.35	5	0.6		
H031655		0.05	1.86	67	0.28	10.30	32	4.0		
H031656		0.02	1.56	6	0.45	10.85	6	7.7		
H031657		0.42	1.06	73	0.10	9.02	71	2.0		
H031658		0.06	6.18	153	0.39	14.20	2450	3.8		
H031659		0.41	11.75	299	0.24	63.2	63	9.8		
H031660		0.11	1.81	44	<0.05	4.31	47	6.5		
H031661		0.03	1.40	6	0.07	1.16	92	2.8		
H031662		0.20	1.90	94	0.05	5.59	61	5.2		
H031663		0.16	1.22	35	0.09	2.67	77	6.3		
H031664		0.03	0.21	1	<0.05	1.02	575	3.0		
H031701		0.18	2.68	3	<0.05	7.33	59	9.0		
H031702		0.08	0.96	8	0.06	3.94	49	2.4		
H031703		<0.02	0.54	2	<0.05	1.44	14	1.0		
H031704		0.02	0.11	<1	<0.05	0.35	12	1.9		
H031705		0.07	0.72	22	0.40	7.66	35	1.9		
H031706		0.02	0.15	1	0.06	1.23	5	0.8		
H031707		0.05	0.25	32	0.40	5.51	38	3.8		
H031708		0.02	0.22	9	0.08	2.51	11	0.9		



ALS Chemex

EXCELLENCE IN ANALYTICAL CHEMISTRY

ALS Canada Ltd.

2103 Dollarton Hwy

North Vancouver BC V7H 0A7

Phone: 604 984 0221 Fax: 604 984 0218 www.alschemex.com

To: OVERLAND RESOURCES LTD.

604 - 700 WEST PENDER STREET

VANCOUVER BC V6C 1G8

Page: Appendix 1

Total # Appendix Pages: 1

Finalized Date: 27-JUN-2010

Account: OVERRE

Project: YBMP

CERTIFICATE OF ANALYSIS WH10074440

Method	CERTIFICATE COMMENTS
ME-MS41 ME-MS41	Interference: Ca>10% on ICP-MS As,ICP-AES results shown. Gold determinations by this method are semi-quantitative due to the small sample weight used (0.5g).

Appendix B: Claim Data

District	Grant #	Type	Name	#	Owner	Record Date	Expiry Date	Status	Map #	Ops #
Mayo	YC02784	Quartz	Scott	1	18526 Yukon Inc. - 10%, Overland Resources Yukon Ltd. - 90%	26/07/2001	20/03/2020	Active	105K16	1500074969
Mayo	YC02785	Quartz	Scott	2	18526 Yukon Inc. - 10%, Overland Resources Yukon Ltd. - 90%	26/07/2001	20/03/2020	Active	105K16	1500074970
Mayo	YC02786	Quartz	Scott	35	18526 Yukon Inc. - 10%, Overland Resources Yukon Ltd. - 90%	26/07/2001	20/03/2020	Active	105K16	1500074971
Mayo	YC02787	Quartz	Scott	36	18526 Yukon Inc. - 10%, Overland Resources Yukon Ltd. - 90%	26/07/2001	20/03/2020	Active	105K16	1500074972

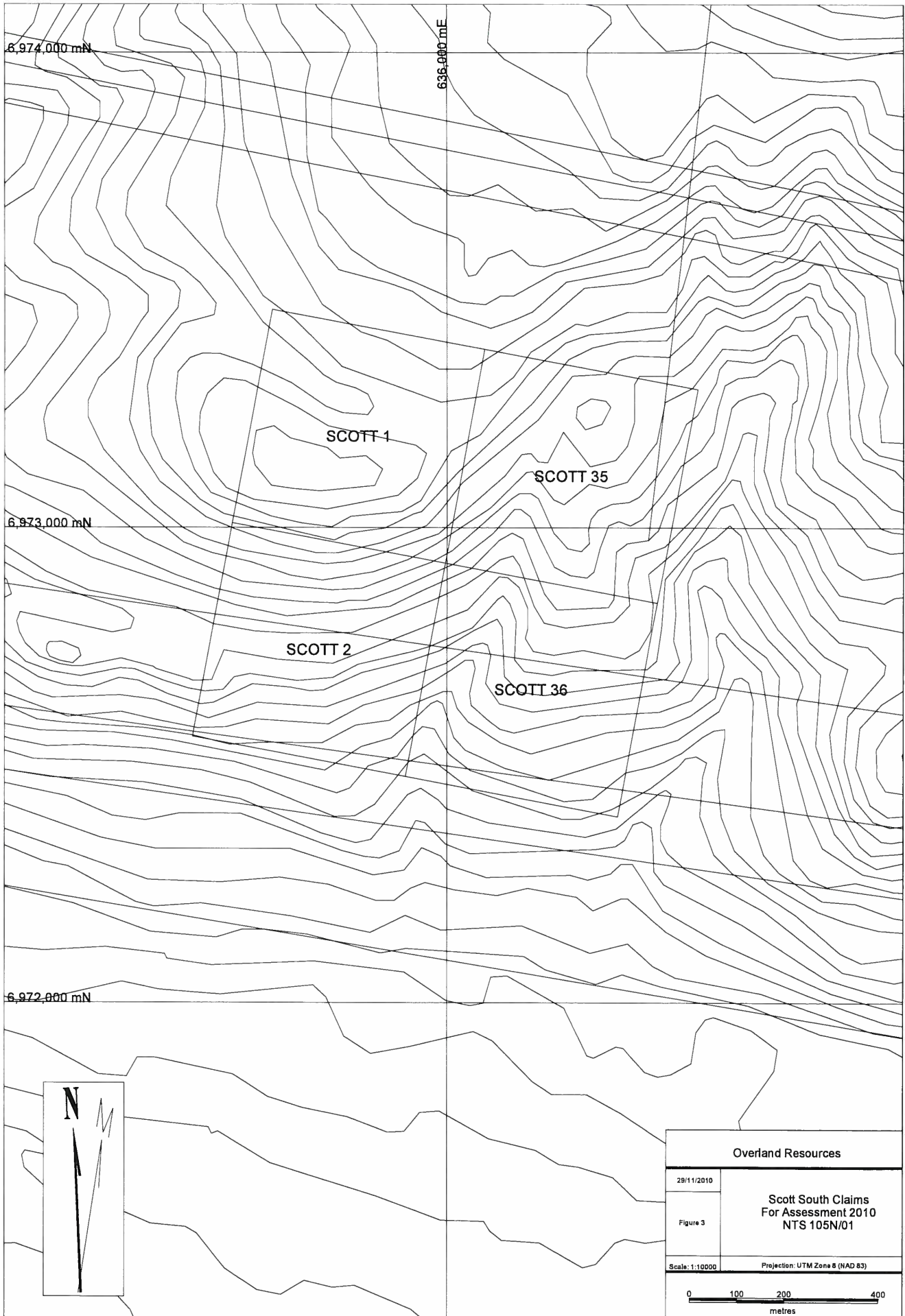
Appendix C: Statement of Expenditures

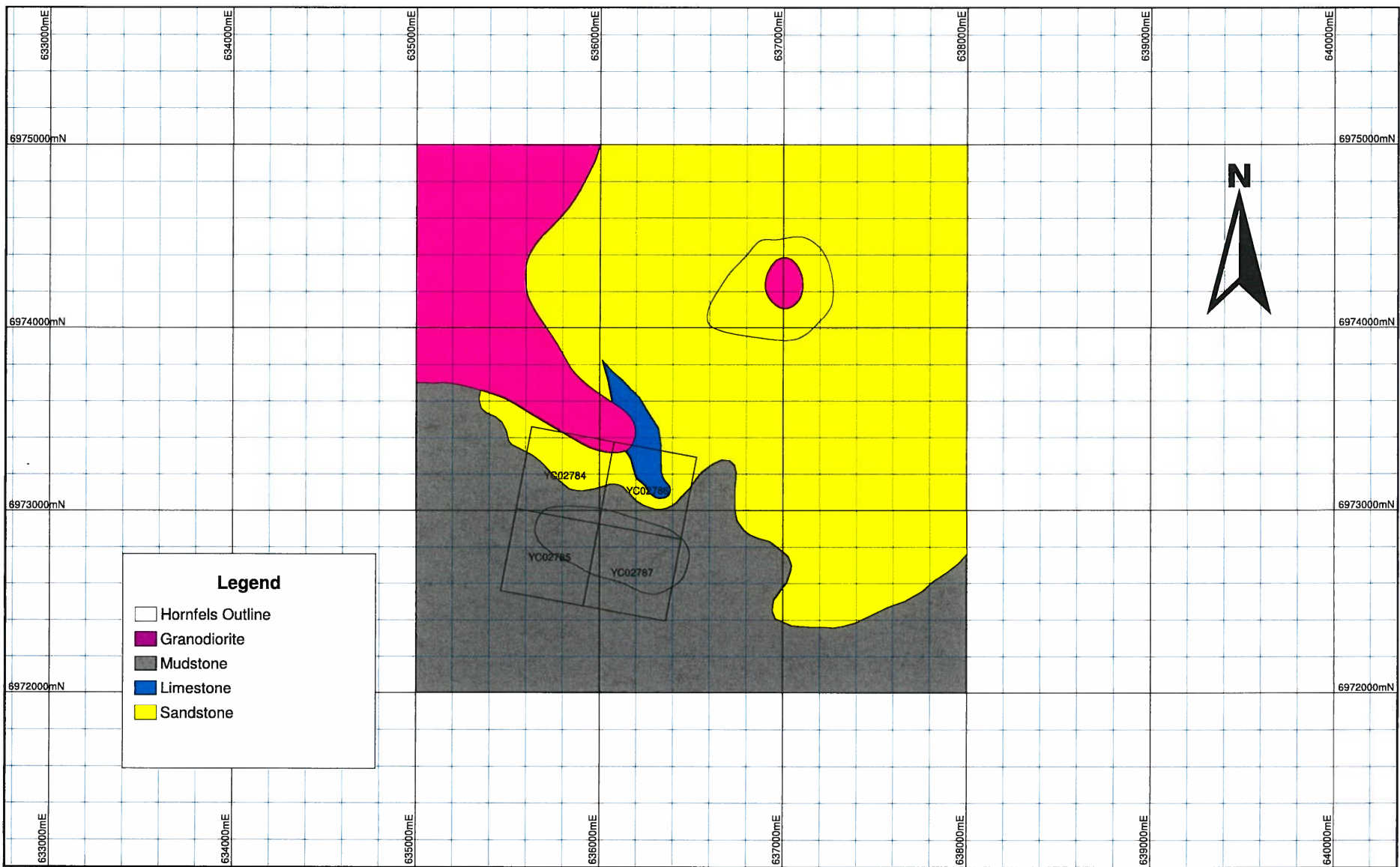
Overland Resources Yukon Limited

Scott South (4 claims)

	Units	Cost/unit	
Alex Tolson (days)	4	375.00	1,500.00
Milada Pardovicova (days)	1	300.00	300.00
Marc Cormier (days)	1	275.00	275.00
Anna Crawford (days)	1	300.00	300.00
Cory Redmond (days)	1	250.00	250.00
Payroll taxes			263.00
Helicopter (hrs)	5.33	1,050.00	5,600.00
Fuel (liters) - Jet Ranger	640.00	3.34	2,135.11
Assays			
sample prep/analysis (unit)	16	37.00	592.00
Courier costs			40.00
Camp costs (man day)	8	50.00	400.00
Other Costs			
Communication (per day cost)	4	20.00	80.00
General Transportation			3,000.00
			<hr/>
			<u>14,735.11</u>

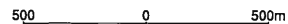
Appendix D: Maps





Based on regional traverses June 2010
NAD83 Zone 8

Scale
1 : 20000



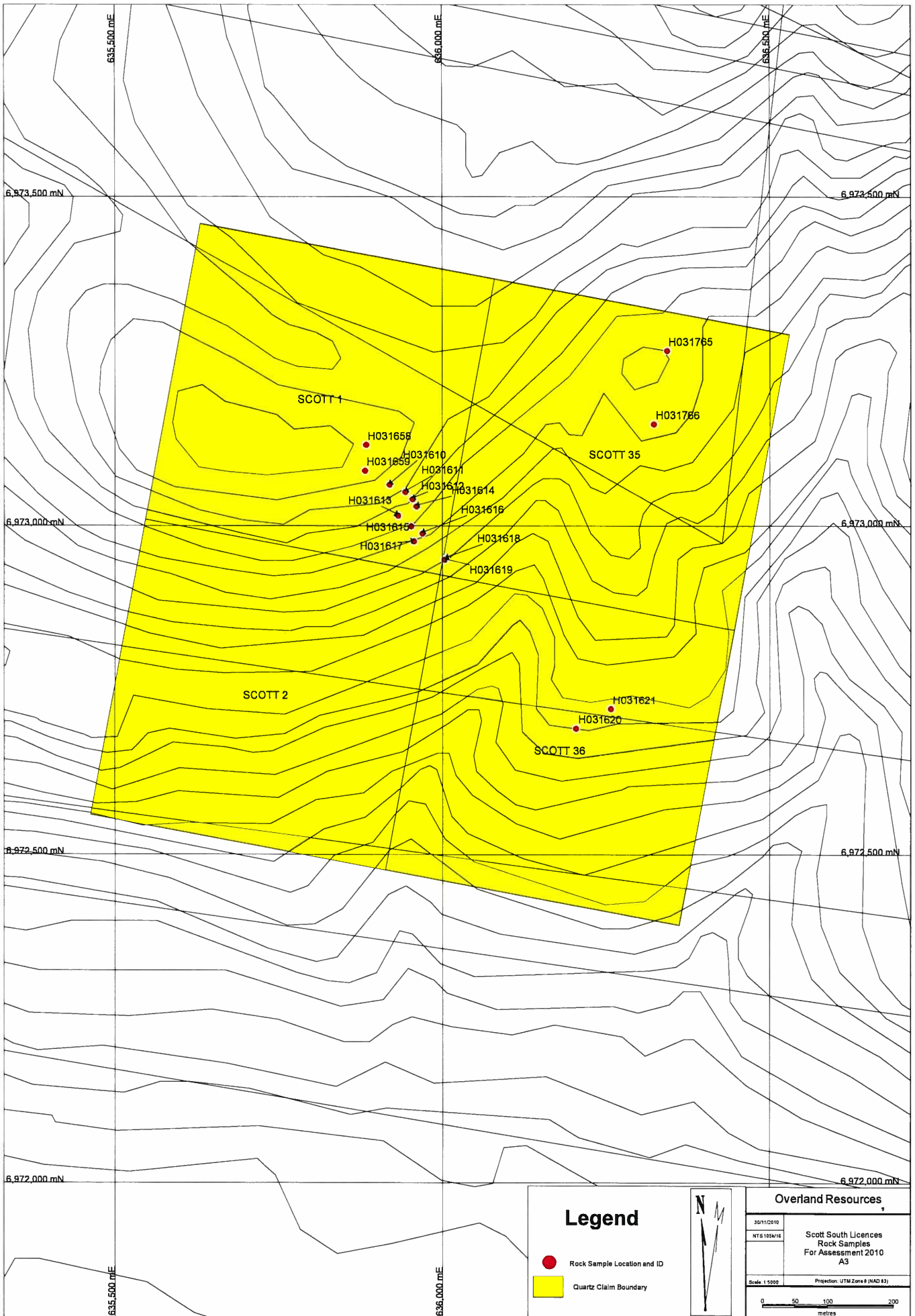
Plot Date
08-Nov-2010

Sheet
1 of 1

Geology: Alex Tolson

**Scott South Property
Interpreted Bedrock Geology**

**Overland Resources
Yukon Base Metals Project**



Legend

- Rock Sample Location and ID
- Quartz Claim Boundary



Overland Resources	
3011/0510 NTFS 105W/E	Scott South Licences Rock Samples For Assessment 2010 A3
<small>Scale: 1:5000 Projection: UTM Zone 8 (NAD 83)</small>	

