

095703

**GEOLOGICAL AND GEOCHEMICAL
ASSESSMENT REPORT FOR B LICENCES**

MAYO MINING DISTRICT

YUKON TERRITORY



Claim Name		Grant No.
B	53 - 74	YC 67832 – YC 67853
B	79-126	YC 67854 – YC 67901

Owned by Overland Resources Yukon Limited and 18526 Yukon Inc

For work undertaken, June 12th to 24th, 2010

By Overland Resources Yukon Ltd.

NTS 105N/01

630000E, 6993000N NAD83 Zone8

Prepared by: Rebecca Smart, Project Geologist

Supervisor: Hugh Alan Bresser, Managing Director

Date: April, 2011

TABLE OF CONTENTS

TABLE OF CONTENTS	1
INTRODUCTION.....	0
PROPERTY DESCRIPTION AND LOCATION.....	0
Claim Status.....	2
ACCESS, CLIMATE, LOCAL RESOURCES, INFRASTRUCTURE, PHYSIOGRAPHY	2
Access	2
Climate.....	2
Local Resources.....	2
Infrastructure	2
Physiography	2
Regional Geology.....	5
Prospect Geology.....	3
Work Conducted 2010.....	6
Sampling Methodology	6
Assay Methodology	7
Previous Investigations.....	7
Current Work for Assessment.....	7
Conclusions and Recommendations	8
Statement of Qualifications.....	8

Appendices.

A: Assay Certificates

B: Claim Status

C: Statement of Expenditure

D: Maps

INTRODUCTION

This report has been prepared in accordance with the guidelines outlined by Yukon *Energy Mines Resources* (EMR) to detail the representation work undertaken and submitted for assessment for the of group of quartz mining claims collectively known by as the B Claims by Overland Resources Limited (Overland) in 2010.

Claim Name		Grant No.
B	53 - 74	YC 67832 – YC 67853
B	79-126	YC 67854 – YC 67901

Table1. List of Quartz Mining Claims subject of application for certificate of work owned by 90% Overland Resources Yukon Limited and 10% 18526 Yukon Inc

Work submitted for assessment on the purposes to EMR for the B Claims was conducted from June 12th to 24th 2010 by Overland on quartz mining claims listed above.

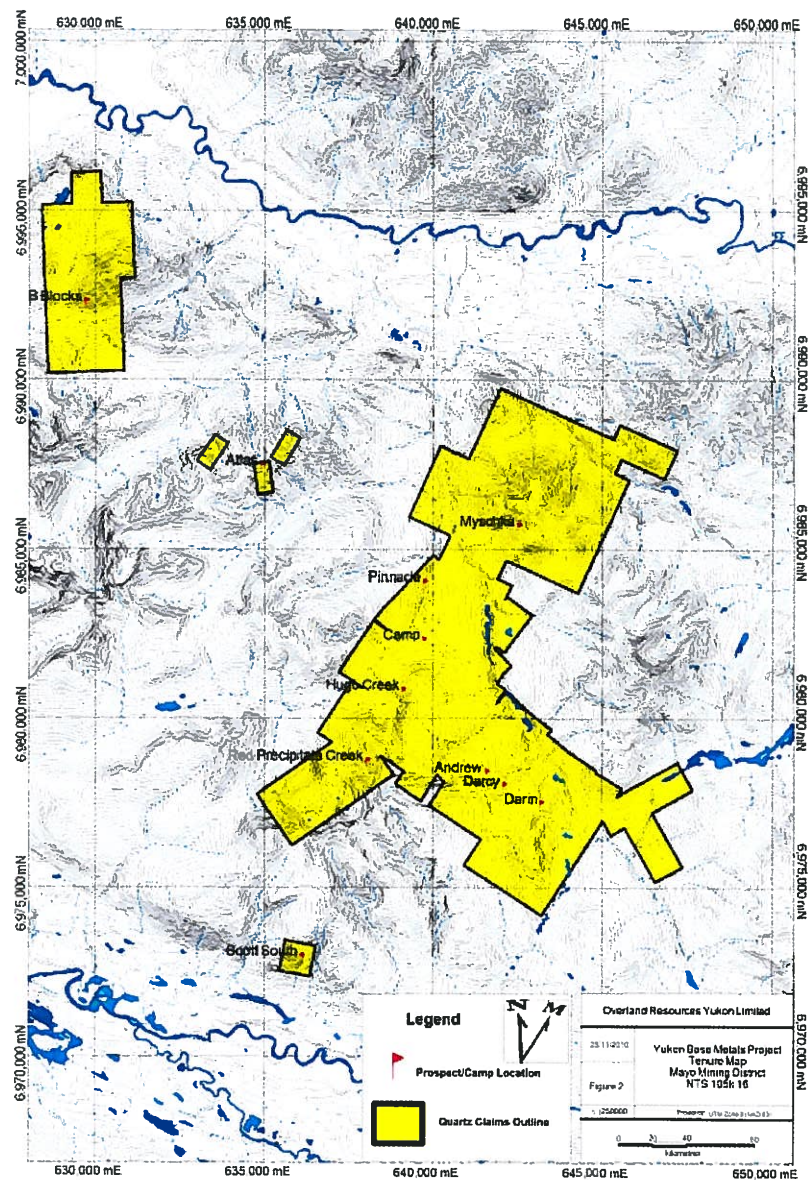
PROPERTY DESCRIPTION AND LOCATION

The Yukon Base Metal Project is situated 110 km north of the town of Faro, Yukon (Figure 1) and consists of 517 full and fractional Quartz Mineral Claims covering approximately 9 403 hectares within the Mayo Mining District (Figure 2). The Project is located within NTS map sheet 105N/01 and 105k/16. The coordinates of the approximate center of the property are 62° 55' 33" N latitude and 132° 13' 7" W longitude (NAD 83, UTM Zone 8, 641 070 mE and 6 980 155 mN).

Claim Status

The Quartz Mineral Claims that comprise the Yukon Base Metal Project are owned 90% by Overland Resources Yukon Limited and 10% by 18526 Yukon Inc. Overland Resources Yukon Limited has the responsibility of permitting, claim maintenance, assessment filing and reporting and associated fees.





The claims lie on crown land, and surface rights belong to the crown. They do not lie within or near any park, special management zones, first nation settlement lands or land selections. However, they are situated within lands considered as traditional hunting and trapping areas by several first nation bands.

All claims are currently in good standing.

ACCESS, CLIMATE, LOCAL RESOURCES, INFRASTRUCTURE, PHYSIOGRAPHY

Access

The Yukon Base Metal Project is accessible by helicopter and short take off and landing-capable fixed-wing aircraft via a 400m unsealed airstrip located at 132°14'20" W and 62°56'20" N (UTM NAD83; 640,090mE and 6, 982,690mN). Heavy equipment and bulk supplies can be delivered to the property via an 85km winter trail which was re-established in winter 2008 from the North Canol Road at Dragon Lake.

Climate

Temperatures at the Yukon Base Metal Project typically range from 8°C to 26°C in the summer and from -30°C to +6°C in the winter. Annual precipitation ranges from 120mm to 200mm, including 0.8m to 1.5m of snow accumulation in the winter months.

Local Resources

No local communities or towns are within 50km of the Yukon Base Metal Project and as such all resources must be brought into the project area. Personnel for construction, mining, exploration, labour and support are available in the communities of Faro, Ross River and Watson Lake as well as the Territorial capital of Whitehorse. Faro and Ross River are 100km southwest and 115km south of the property respectively.

Infrastructure

Infrastructure near the Yukon Base Metal Project includes the Canol Road and Robert Campbell Highway. The Canol Road extends for 458km from the Yukon-Northwest Territories border to Johnson's Crossing on the Alaska Highway south of Whitehorse. Northeast of the Pelly River at Dragon Lake, the Canol road comes to within 60km of the Yukon Base Metal Project where the winter access trail into the property begins.

Both Ross River and Faro are serviced by electrical transmission lines sourced from the Aishihik hydroelectric facility to the west.

Physiography

The Yukon Base Metal Project is located within the South Fork Range of the Yukon Plateau, east of the Tintina Trench and west of the MacKenzie Mountains. The property occupies the

west side of a wide valley, where elevations range from 1,000m to 1,800m above sea level. Several east flowing creek valleys cut moderate slopes across the Yukon Base Metal Project.

The vegetation at the Yukon Base Metal Project is alpine to sub-alpine with lower elevations being dominated by black and white spruce stands, typical of the Northern Boreal Forest.

REGIONAL GEOLOGY

The property is located within the Selwyn Basin of the Northern Cordillera; a continental margin rift-fill and cover sedimentary sequence off the coast of ancestral North America. Stratigraphic units on the Yukon Geologic Survey Map are of the Road River Group metasediments consisting of chert, shale/mudstone, limestone and conglomerate. Regionally the area has been intruded by Cretaceous felsic plutonism.

PROSPECT GEOLOGY

Along the main topographic ridge on the property is dark reddish/purple to black or grey laminated to massive quartzite of variable grain size and weak to moderate metamorphic intensity. The quartzite was locally interbedded with mudstone. A ~40m thick crystalline grey limestone unit interbedded with black/dark grey chert is exposed along the main ridge. Finely disseminated pyrrhotite is associated with oxidation. Several boulders of massive $\leq 80\%$ pyrrhotite were found on the property.

The southern portion of the B claims is underlain by microcrystalline grey massive chert interbedded with varitextured immature sandstones (greywacke) and laminated grey to black graphitic pyritic mudstone. Bedding is curvi-planar and generally strikes consistently northwest and dips moderately to steeply increasing to sub-vertical towards the central part of the claims. There is a weak upright cleavage sub parallel to bedding in mudstone units which are openly to gently folded with a shallow plunge also to the northwest. The area contains minor quartz veining typically mm sized veinlets in quartzites.

West of the southern portion of the B claims is a pyritic and gossanous conglomerate and conglomeratic sandstone unit that is massive to crudely bedded with subangular poorly sorted chert and mudstone clasts in a black muddy matrix. It is interbedded with rare limestone and sandstone.

Stratigraphy maintains a strike to the northwest and all units are very steeply dipping. Two deformation events are expressed as refolded folds in the turbidites to the east, and two foliations noted in the schist/phyllite to the west. The D2 fold hinge was measured at 231/32 and open with the D1 fold almost isoclinal at 30 degrees to D2.

WORK CONDUCTED 2010

Work conducted in 2010 for assessment included stream sediment sampling and soil geochemical sampling as well as general prospecting and rock sampling.

All information and data documented in this report was obtained by employees or consultants employed by Overland Resources Yukon Limited with the exception of geochemical analysis, which were outsourced to ALS Chemex of Vancouver B.C.

Sampling Methodology

Stream Sediment Samples

All sediment samples were collected in the following manner

1. Location recorded by handheld GPS in NAD83 Zone8
2. Representative sample exceeding 400g of silt collected using a shovel and coarse then fine sieving from sediment in the active part of a stream tributary.
3. Samples sealed in brown paper sample bags with a distinct sample ID
4. Samples dispatched to analytical laboratory.

Rock Samples

All rock samples were collected in the following manner

1. Location recorded by handheld GPS in NAD83 Zone 8
2. Representative sample exceeding 400g of bedrock collected using a standard geological rock pick style hammer.
3. Samples sealed in clear plastic sample bags with a distinct sample ID
4. Samples dispatched to analytical laboratory.

Soil Samples

All soil samples were collected in the following manner

1. Location recorded by handheld GPS in NAD83 Zone 8

2. Use auger to sample the 'B' 'C' horizon of in situ soil
3. Collect a representative sample exceeding 400g
4. Samples sealed in brown paper sample bags with a distinct sample ID
5. Samples dispatched to analytical laboratory.

Assay Methodology

Stream sediment samples were sent to ALS Labs in Whitehorse where they were weighed, dried and sieved to -180 micron (80 mesh). Samples were processed by aqua regia digestion and analyzed for a full element suite using ICP-MS and ICP-AES.

Rock samples were sent to ALS Labs in Whitehorse where all samples were weighed, dried and crushed to better than 70% -2mm then split to 250g and pulverized to better than 85% passing 75 microns. Samples were processed by aqua regia digestion and analyzed for a full element suite using ICP-MS and ICP-AES.

Soil samples were sent to ALS Labs in Whitehorse where they were weighed, dried and sieved to -180 micron (80 mesh). Samples were processed by aqua regia digestion and analyzed for a full element suite using ICP-MS and ICP-AES.

Previous Investigations

Previous work included first pass stream sediment sampling in 2008 by Overland to follow up on a regional stream sediment sample reported by the government and regional YGS geologic mapping.

Current Work for Assessment

Overland staff spent one day stream sediment sampling on and around B claim drainages. Three stream sediment samples were taken on the claims to follow up on previous work sampling upstream tributaries, in order to narrow in on the source of high values. Sample locations and assay certificates are included in the appendices.

Overland geologists and technicians spent 4 days prospecting on the B claims and to the west of the claims. A total of 21 rock chip samples were collected. Sample locations and assay certificates are included in the appendices.

91 soil samples were collected over six days by Overland Technicians. Sample locations and assay certificates are included in the appendices.

CONCLUSIONS AND RECOMMENDATIONS

The B claims are in an area geologically prospective for both polymetallic vein and SEDEX-type mineralisation. While stream sediment values indicate the area is anomalous in base metals both soils and rock samples from prospecting have yet to uncover the possible source.


It is recommended that reconnaissance spaced soil sampling be extended both upstream to the west of the property and over the southern portion of the claims. The claims investigated in 2010 contain no obvious surface expression of a base metals deposit yet the immediate area remains prospective.

STATEMENT OF QUALIFICATIONS

I, Rebecca Smart, the author of this report hereby certify that:

1. I am a graduate of Macquarie University (2006) with a Bachelor of Science degree in Geology and I have practiced my profession since 2007.

Dated at Vancouver, Canada, this 29 day of June.



Appendix A: Assay Certificates



ALS Chemex

EXCELLENCE IN ANALYTICAL CHEMISTRY

ALS Canada Ltd.

2103 Dollarton Hwy
North Vancouver BC V7H 0A7

Phone: 604 984 0221 Fax: 604 984 0218 www.alschemex.com

To: OVERLAND RESOURCES LTD.
604 - 700 WEST PENDER STREET
VANCOUVER BC V6C 1G8

Page: 1
Finalized Date: 7-JUL-2010
Account: OVERRE

CERTIFICATE WH10083979

Project: YMBP

P.O. No.:

This report is for 8 Sediment samples submitted to our lab in Whitehorse, YT, Canada on 24-JUN-2010.

The following have access to data associated with this certificate:

HUGH BRESSER

ALEX TOLSON

SAMPLE PREPARATION

ALS CODE	DESCRIPTION
WEI-21	Received Sample Weight
DRY-22	Drying - Maximum Temp 60C
LOG-22	Sample login - Rcd w/o BarCode
SCR-41	Screen to -180um and save both

ANALYTICAL PROCEDURES

ALS CODE	DESCRIPTION
ME-MS41	51 anal. aqua regia ICPMS

To: OVERLAND RESOURCES LTD.
ATTN: HUGH BRESSER
2ND FLOOR
675 MURRAY ST
WEST PERTH WA 6005
AUSTRALIA

This is the Final Report and supersedes any preliminary report with this certificate number. Results apply to samples as submitted. All pages of this report have been checked and approved for release.

Signature:



Colin Ramshaw, Vancouver Laboratory Manager



ALS Chemex

EXCELLENCE IN ANALYTICAL CHEMISTRY

ALS Canada Ltd.

2103 Dollarton Hwy

North Vancouver BC V7H 0A7

Phone: 604 984 0221 Fax: 604 984 0218 www.alschemex.com

To: OVERLAND RESOURCES LTD.
604 - 700 WEST PENDER STREET
VANCOUVER BC V6C 1G8

Page: 2 - A
Total # Pages: 2 (A - D)
Plus Appendix Pages
Finalized Date: 7-JUL-2010
Account: OVERRE

Project: YMBP

CERTIFICATE OF ANALYSIS WH10083979

Sample Description	Method Analyte Units LOR	WEI-21	ME-MS41	ME-MS41	ME-MS41	ME-MS41	ME-MS41	ME-MS41	ME-MS41	ME-MS41	ME-MS41	ME-MS41	ME-MS41	ME-MS41	ME-MS41	ME-MS41
		Recvd Wt. kg	Ag ppm	Al %	As ppm	Au ppm	B ppm	Ba ppm	Be ppm	Bi ppm	Ca %	Cd ppm	Ce ppm	Co ppm	Cr ppm	Cs ppm
		0.02	0.01	0.01	0.1	0.2	10	10	0.05	0.01	0.01	0.01	0.02	0.1	1	0.05
G0669651		0.46	0.44	1.80	45.8	<0.2	<10	1990	1.27	0.67	0.26	3.09	45.7	24.3	22	5.00
G0669652		0.44	1.80	2.63	37.4	<0.2	<10	740	0.64	0.43	0.08	0.29	35.7	22.5	33	4.56
G0669653		0.36	0.36	1.52	38.6	<0.2	<10	1510	0.81	0.55	0.21	5.09	42.9	19.0	21	3.75
G0669654		0.38	0.32	1.65	48.5	<0.2	<10	1820	0.75	0.62	0.23	2.05	45.2	20.4	23	3.89
G0669655		0.36	0.29	1.97	23.1	<0.2	<10	480	0.91	0.34	0.22	7.17	35.0	19.8	17	2.72
G0669656		0.08	0.16	0.71	15.0	<0.2	<10	230	0.26	0.12	0.49	0.80	16.00	3.0	8	0.77
G0669657		0.06	0.18	0.72	20.1	<0.2	<10	280	0.28	0.13	0.59	1.04	16.75	3.2	10	0.69
G0669658		0.42	0.89	1.05	279	<0.2	<10	1200	0.51	1.89	0.39	3.00	22.7	6.4	19	2.44

***** See Appendix Page for comments regarding this certificate *****



ALS Chemex

EXCELLENCE IN ANALYTICAL CHEMISTRY

ALS Canada Ltd.

2103 Dollarton Hwy

North Vancouver BC V7H 0A7

Phone: 604 984 0221 Fax: 604 984 0218 www.alschemex.com

To: OVERLAND RESOURCES LTD.
604 - 700 WEST PENDER STREET
VANCOUVER BC V6C 1G8

Page: 2 - B
Total # Pages: 2 (A - D)
Plus Appendix Pages
Finalized Date: 7-JUL-2010
Account: OVERRE

Project: YMBP

CERTIFICATE OF ANALYSIS WH10083979

Sample Description	Method Analyte Units LOR	ME-MS41	ME-MS41	ME-MS41	ME-MS41	ME-MS41	ME-MS41	ME-MS41	ME-MS41	ME-MS41	ME-MS41	ME-MS41	ME-MS41	ME-MS41	ME-MS41	
		Cu	Fe	Ga	Ge	Hf	Hg	In	K	La	Li	Mg	Mn	Mo	Na	Nb
		ppm	%	ppm	ppm	ppm	ppm	ppm	%	ppm	ppm	%	ppm	ppm	%	ppm
		0.2	0.01	0.05	0.05	0.02	0.01	0.005	0.01	0.2	0.1	0.01	5	0.05	0.01	0.05
G0669651		121.0	4.38	5.94	0.14	0.06	0.02	0.070	0.10	21.6	45.5	0.68	2370	5.08	0.03	0.39
G0669652		224	7.40	5.94	0.20	0.07	0.05	0.075	0.10	17.8	26.3	0.40	1620	4.98	0.02	0.70
G0669653		92.5	3.97	5.15	0.16	0.05	0.01	0.056	0.10	21.9	26.0	0.59	1570	6.39	0.03	0.42
G0669654		98.5	4.42	5.43	0.15	0.04	0.01	0.060	0.10	21.0	28.5	0.63	1940	6.20	0.03	0.37
G0669655		67.6	2.36	5.16	0.11	0.04	0.03	0.027	0.08	17.3	26.6	0.34	934	3.35	0.03	0.76
G0669656		17.7	0.93	2.00	0.09	0.03	0.04	0.008	0.04	22.3	5.7	0.11	151	0.77	0.04	0.43
G0669657		21.1	1.02	1.91	0.10	0.04	0.07	0.007	0.04	28.5	5.1	0.11	186	1.13	0.03	0.44
G0669658		105.5	2.76	4.79	0.12	0.02	0.03	0.128	0.06	16.2	13.6	0.33	297	8.21	0.03	0.76

***** See Appendix Page for comments regarding this certificate *****



ALS Chemex

EXCELLENCE IN ANALYTICAL CHEMISTRY

ALS Canada Ltd.

2103 Dollarton Hwy

North Vancouver BC V7H 0A7

Phone: 604 984 0221 Fax: 604 984 0218 www.alschemex.com

To: OVERLAND RESOURCES LTD.
604 - 700 WEST PENDER STREET
VANCOUVER BC V6C 1G8

Page: 2 - C
Total # Pages: 2 (A - D)
Plus Appendix Pages
Finalized Date: 7-JUL-2010
Account: OVERRE

Project: YMBP

CERTIFICATE OF ANALYSIS WH10083979

Sample Description	Method Analyte Units LOR	ME-MS41	ME-MS41	ME-MS41	ME-MS41	ME-MS41	ME-MS41	ME-MS41	ME-MS41	ME-MS41	ME-MS41	ME-MS41	ME-MS41	ME-MS41	ME-MS41	
		Ni	P	Pb	Rb	Re	S	Sb	Sc	Se	Sn	Sr	Ta	Te	Th	Ti
		ppm	ppm	ppm	ppm	ppm	%	ppm	ppm	ppm	ppm	ppm	ppm	ppm	ppm	%
		0.2	10	0.2	0.1	0.001	0.01	0.05	0.1	0.2	0.2	0.2	0.01	0.01	0.2	0.005
G0669651		157.5	960	45.2	11.1	0.002	0.10	5.10	5.9	3.5	0.6	39.7	0.01	0.11	5.0	0.017
G0669652		71.8	1370	28.0	10.0	0.002	0.34	6.15	5.3	7.6	0.4	27.3	0.01	0.19	3.9	0.028
G0669653		98.6	980	35.4	10.3	0.002	0.09	5.47	4.8	3.2	0.5	31.0	0.01	0.10	4.3	0.019
G0669654		90.1	1000	39.8	10.3	0.002	0.10	5.99	5.3	3.6	0.6	31.4	0.01	0.10	4.6	0.018
G0669655		158.5	720	17.1	15.2	0.004	0.17	1.75	3.0	2.5	0.4	29.5	0.01	0.04	1.7	0.029
G0669656		9.7	660	6.0	4.7	0.001	0.21	0.56	1.7	2.7	3.0	34.8	<0.01	0.01	1.1	0.021
G0669657		9.8	660	6.8	4.6	0.001	0.26	0.56	1.9	3.8	4.5	39.9	0.01	0.01	1.2	0.019
G0669658		27.0	920	56.9	9.3	0.002	0.06	16.15	2.6	2.4	5.1	33.0	<0.01	0.07	1.6	0.040

***** See Appendix Page for comments regarding this certificate *****



ALS Chemex

EXCELLENCE IN ANALYTICAL CHEMISTRY

ALS Canada Ltd.

2103 Dollarton Hwy

North Vancouver BC V7H 0A7

Phone: 604 984 0221 Fax: 604 984 0218 www.alschemex.com

To: OVERLAND RESOURCES LTD.

604 - 700 WEST PENDER STREET

VANCOUVER BC V6C 1G8

Page: 2 - D

Total # Pages: 2 (A - D)

Plus Appendix Pages

Finalized Date: 7-JUL-2010

Account: OVERRE

Project: YMBP

CERTIFICATE OF ANALYSIS WH10083979

Sample Description	Method Analyte Units LOR	ME-MS41	ME-MS41	ME-MS41	ME-MS41	ME-MS41	ME-MS41	
		Ti	U	V	W	Y	Zn	Zr
		ppm	ppm	ppm	ppm	ppm	ppm	ppm
		0.02	0.05	1	0.05	0.05	2	0.5
G0669651		0.26	2.39	46	0.16	17.20	440	2.1
G0669652		0.27	2.82	62	0.21	9.50	198	2.1
G0669653		0.23	2.15	50	0.16	14.30	359	1.2
G0669654		0.22	1.94	52	0.16	12.80	299	1.3
G0669655		0.21	1.53	41	0.18	18.30	490	0.7
G0669656		0.05	5.60	11	0.07	12.15	35	0.7
G0669657		0.06	8.65	12	0.08	15.75	37	1.0
G0669658		0.12	3.70	86	2.33	13.10	286	<0.5

***** See Appendix Page for comments regarding this certificate *****



ALS Chemex

EXCELLENCE IN ANALYTICAL CHEMISTRY

ALS Canada Ltd.

2103 Dollarton Hwy

North Vancouver BC V7H 0A7

Phone: 604 984 0221 Fax: 604 984 0218 www.alschemex.com

To: OVERLAND RESOURCES LTD.
604 - 700 WEST PENDER STREET
VANCOUVER BC V6C 1G8

Page: Appendix 1
Total # Appendix Pages: 1
Finalized Date: 7-JUL-2010
Account: OVERRE

Project: YMBP

CERTIFICATE OF ANALYSIS WH10083979

Method	CERTIFICATE COMMENTS
ME-MS41	Gold determinations by this method are semi-quantitative due to the small sample weight used (0.5g).



ALS Chemex

EXCELLENCE IN ANALYTICAL CHEMISTRY

ALS Canada Ltd.

2103 Dollarton Hwy

North Vancouver BC V7H 0A7

Phone: 604 984 0221 Fax: 604 984 0218 www.alschemex.com

To: **OVERLAND RESOURCES LTD.**
604 - 700 WEST PENDER STREET
VANCOUVER BC V6C 1G8

Page: 1
Finalized Date: 27-JUL-2010
Account: OVERRE

CERTIFICATE WH10083978

Project: YMBP

P.O. No.: 7

This report is for 105 Rock samples submitted to our lab in Whitehorse, YT, Canada on 24-JUN-2010.

The following have access to data associated with this certificate:

HUGH BRESSER

ALEX TOLSON

SAMPLE PREPARATION

ALS CODE	DESCRIPTION
WEI-21	Received Sample Weight
CRU-QC	Crushing QC Test
LOG-22	Sample login - Rcd w/o BarCode
CRU-31	Fine crushing - 70% <2mm
SPL-21	Split sample - riffle splitter
PUL-31	Pulverize split to 85% <75 um

ANALYTICAL PROCEDURES

ALS CODE	DESCRIPTION	INSTRUMENT
Ag-OG46	Ore Grade Ag - Aqua Regia	VARIABLE
ME-OG46	Ore Grade Elements - AquaRegia	ICP-AES
Pb-OG46	Ore Grade Pb - Aqua Regia	VARIABLE
Cu-OG46	Ore Grade Cu - Aqua Regia	VARIABLE
Zn-OG46	Ore Grade Zn - Aqua Regia	VARIABLE
ME-MS41	51 anal. aqua regia ICPMS	

To: **OVERLAND RESOURCES LTD.**
ATTN: HUGH BRESSER
2ND FLOOR
675 MURRAY ST
WEST PERTH WA 6005
AUSTRALIA

This is the Final Report and supersedes any preliminary report with this certificate number. Results apply to samples as submitted. All pages of this report have been checked and approved for release.

Signature:


Colin Ramshaw, Vancouver Laboratory Manager



ALS Chemex

EXCELLENCE IN ANALYTICAL CHEMISTRY

ALS Canada Ltd.

2103 Dollarton Hwy
North Vancouver BC V7H 0A7
Phone: 604 984 0221 Fax: 604 984 0218 www.alschemex.com

To: OVERLAND RESOURCES LTD.
604 - 700 WEST PENDER STREET
VANCOUVER BC V6C 1G8

Page: 2 - A
Total # Pages: 4 (A - D)
Plus Appendix Pages
Finalized Date: 27-JUL-2010
Account: OVERRE

Project: YMBP

CERTIFICATE OF ANALYSIS WH10083978

Sample Description	WEI-21	ME-MS41	ME-MS41	ME-MS41	ME-MS41	ME-MS41	ME-MS41	ME-MS41	ME-MS41	ME-MS41	ME-MS41	ME-MS41	ME-MS41	ME-MS41	ME-MS41	ME-MS41
	Recvd Wt. kg	Ag ppm	Al %	As ppm	Au ppm	B ppm	Ba ppm	Be ppm	Bi ppm	Ca %	Cd ppm	Ce ppm	Co ppm	Cr ppm	Cs ppm	LOI
H031622	1.30	0.33	1.60	30.0	<0.2	20	100	0.44	0.29	0.43	0.45	20.0	14.0	42	4.63	
H031623	0.97	0.04	2.45	5.0	<0.2	10	130	1.10	0.33	0.16	0.03	94.0	10.3	40	13.50	
H031624	0.93	0.02	1.85	0.1	<0.2	<10	30	0.31	0.11	8.48	0.04	14.75	0.9	8	0.47	
H031625	1.53	0.29	5.77	18.5	<0.2	<10	70	0.46	3.74	2.63	0.04	6.54	23.3	112	1.34	
H031626	1.29	0.15	3.03	21.4	<0.2	<10	10	0.06	0.09	2.15	0.10	0.99	19.4	85	0.39	
H031627	1.55	0.01	1.62	9.2	<0.2	<10	130	0.43	0.09	0.39	0.06	38.3	12.8	34	2.26	
H031628	1.27	0.04	1.18	10.5	<0.2	<10	150	0.56	0.21	0.10	0.03	48.4	7.0	20	2.30	
H031629	1.96	0.01	1.00	11.1	<0.2	<10	40	0.21	0.03	1.35	0.03	23.0	6.3	15	0.79	
H031630	1.51	13.50	0.18	76.1	<0.2	<10	50	0.05	34.3	0.02	0.01	8.18	1.5	6	0.44	
H031631	1.13	0.35	1.78	35.8	<0.2	<10	70	0.33	0.62	0.04	0.01	28.7	14.2	17	2.47	
H031632	1.04	0.63	0.24	53.9	<0.2	<10	20	0.10	0.54	3.87	0.07	6.38	18.9	11	0.39	
H031633	1.28	6.36	0.17	719	0.3	20	30	<0.05	2.83	0.02	0.17	5.64	19.0	8	0.43	
H031634	2.29	>100	0.15	121.5	<0.2	<10	10	0.11	399	0.05	>1000	3.67	37.4	1	0.18	
H031635	1.30	0.70	0.05	1.7	<0.2	<10	10	<0.05	0.75	0.22	1.40	5.23	0.7	19	0.18	
H031636	1.69	12.00	0.42	1.7	<0.2	<10	40	0.17	5.04	0.66	71.7	9.26	11.9	23	0.67	
H031637	1.50	47.5	0.28	4970	<0.2	<10	20	0.07	6.42	0.45	79.0	5.29	20.6	16	0.48	
H031710	0.97	1.28	0.06	9.9	<0.2	<10	30	<0.05	0.21	4.19	235	2.73	25.6	4	0.18	
H031711	1.01	0.40	0.38	11.7	<0.2	<10	440	0.09	0.14	0.02	0.68	5.62	1.4	20	0.94	
H031712	1.29	0.25	0.75	6.4	<0.2	<10	260	0.19	0.17	0.03	1.23	12.50	4.2	20	1.71	
H031713	0.98	0.06	0.80	5.4	<0.2	<10	110	0.15	0.11	0.02	0.09	26.2	3.8	20	0.59	
H031714	0.99	0.11	1.88	21.4	<0.2	<10	170	0.56	0.37	0.21	0.17	57.8	12.0	20	1.56	
H031715	1.11	0.20	4.48	21.9	<0.2	<10	190	0.33	0.36	1.90	0.08	11.40	31.2	120	3.86	
H031716	0.87	0.05	0.11	4.4	<0.2	<10	40	<0.05	0.10	0.01	0.14	7.72	0.9	16	0.17	
H031717	2.00	0.04	0.17	1.3	<0.2	<10	100	0.08	0.11	0.02	0.05	7.68	0.6	48	0.35	
H031718	1.05	0.39	1.08	8.2	<0.2	<10	240	0.41	0.12	0.30	0.38	13.50	3.8	35	2.71	
H031719	1.04	0.39	0.51	6.6	<0.2	<10	180	0.23	0.11	0.20	0.19	11.30	1.2	29	1.25	
H031720	1.35	0.05	2.04	63.3	<0.2	<10	70	0.47	0.54	0.05	0.17	69.7	8.8	17	2.49	
H031721	1.34	0.50	0.33	>10000	0.5	<10	40	0.16	8.98	0.01	0.04	10.75	186.0	6	1.05	
H031722	0.65	0.02	0.08	107.0	<0.2	<10	20	<0.05	0.08	0.01	0.04	5.45	1.5	23	0.37	
H031723	1.39	0.04	0.01	131.5	<0.2	<10	<10	<0.05	0.04	0.01	0.03	2.84	0.5	39	0.12	
H031724	1.34	0.11	0.44	35.8	<0.2	<10	60	0.30	0.23	0.01	0.04	23.6	1.2	17	1.53	
H031725	1.19	28.1	1.21	15.4	<0.2	<10	20	<0.05	0.42	0.02	6.00	12.85	1.6	43	0.44	
H031726	1.15	0.40	0.42	21.1	<0.2	<10	60	0.16	0.29	0.04	0.42	18.70	3.1	13	1.23	
H031727	1.28	0.21	0.28	22.0	<0.2	<10	40	0.12	0.12	0.02	0.06	14.25	2.3	10	0.76	
H031728	1.22	0.08	0.22	2.4	<0.2	<10	40	0.10	0.12	0.03	0.22	15.60	3.6	12	0.66	
H031729	1.17	0.68	0.09	24.0	<0.2	<10	30	0.05	0.07	0.01	0.07	6.83	1.5	18	0.38	
H031730	1.19	0.05	0.19	4.4	<0.2	<10	40	0.10	0.11	0.02	0.16	18.15	3.3	11	0.48	
H031731	1.67	0.03	0.11	2.8	<0.2	<10	30	0.06	0.03	0.01	0.03	6.80	1.2	18	0.45	
H031732	1.68	0.02	0.07	2.3	<0.2	<10	20	<0.05	0.02	0.01	0.02	7.58	0.7	17	0.27	
H031733	1.40	0.03	0.06	167.0	<0.2	<10	20	<0.05	0.04	0.01	0.05	5.17	2.0	18	0.26	



ALS Chemex

EXCELLENCE IN ANALYTICAL CHEMISTRY

ALS Canada Ltd.

2103 Dollarton Hwy
North Vancouver BC V7H 0A7
Phone: 604 984 0221 Fax: 604 984 0218 www.alschemex.com

To: OVERLAND RESOURCES LTD.
604 - 700 WEST PENDER STREET
VANCOUVER BC V6C 1G8

Page: 2 - B
Total # Pages: 4 (A - D)
Plus Appendix Pages
Finalized Date: 27-JUL-2010
Account: OVERRE

Project: YMBP

CERTIFICATE OF ANALYSIS WH10083978

Sample Description	Method	ME-MS41	ME-MS41	ME-MS41	ME-MS41	ME-MS41	ME-MS41	ME-MS41	ME-MS41	ME-MS41	ME-MS41	ME-MS41	ME-MS41	ME-MS41	ME-MS41	
	Analyte	Cu	Fe	Ga	Ge	Hf	Hg	In	K	La	Li	Mg	Mn	Mo	Na	
Units		ppm	%	ppm	ppm	ppm	ppm	ppm	%	ppm	ppm	%	ppm	ppm	%	
LOR		0.2	0.01	0.05	0.05	0.02	0.01	0.005	0.01	0.2	0.1	0.01	5	0.05	0.01	
H031622		67.4	2.32	7.38	0.08	0.12	<0.01	0.037	0.34	10.5	36.0	0.50	826	2.14	0.06	0.24
H031623		24.0	3.47	8.66	0.14	0.36	<0.01	0.019	0.91	48.1	80.3	0.79	197	0.13	0.04	0.56
H031624		2.9	0.36	4.41	0.05	0.04	<0.01	<0.005	0.05	6.4	4.6	0.06	678	0.08	0.10	0.86
H031625		161.5	4.36	15.75	0.13	0.04	<0.01	0.030	0.65	2.9	25.5	1.40	159	0.23	0.47	0.18
H031626		92.5	1.51	5.10	0.07	0.03	<0.01	0.012	0.02	0.4	14.6	1.08	231	0.24	0.33	0.26
H031627		2.2	2.94	7.57	0.10	0.06	<0.01	0.021	0.40	19.3	31.3	0.67	339	0.20	0.04	0.65
H031628		5.8	1.69	3.80	0.08	0.13	<0.01	0.008	0.45	20.7	20.0	0.38	314	0.51	0.03	0.47
H031629		3.2	1.75	3.39	<0.05	0.03	<0.01	0.007	0.12	11.2	16.4	0.41	555	0.12	0.03	<0.05
H031630		32.7	3.39	0.48	0.05	0.02	<0.01	<0.005	0.12	3.9	0.6	0.01	105	0.21	0.01	0.07
H031631		30.6	3.99	5.40	0.08	0.19	<0.01	0.008	0.29	14.6	25.6	0.74	375	0.56	0.02	0.08
H031632		66.6	2.20	0.85	<0.05	0.02	<0.01	0.016	0.06	3.1	3.4	0.13	736	0.18	0.01	0.08
H031633		735	10.65	0.58	0.17	0.02	0.01	0.055	0.10	2.7	0.6	0.01	27	0.45	0.01	0.16
H031634		>10000	19.35	0.76	0.38	0.02	1.13	39.6	0.02	1.5	0.2	0.06	258	0.38	0.01	0.22
H031635		41.6	0.50	0.22	<0.05	<0.02	<0.01	0.052	0.02	2.4	0.2	0.01	161	0.19	0.01	0.05
H031636		236	2.66	1.52	0.05	0.02	0.04	0.474	0.12	4.3	5.5	0.15	512	0.22	0.01	0.07
H031637		290	7.40	1.07	0.10	0.02	0.13	0.488	0.09	2.8	3.1	0.11	952	0.15	0.01	0.10
H031710		73.6	0.63	15.55	0.26	0.08	25.2	0.751	0.03	1.1	0.6	0.01	419	0.11	0.01	0.08
H031711		37.2	1.57	1.55	<0.05	0.03	0.07	0.019	0.05	2.9	5.3	0.14	249	3.04	<0.01	<0.05
H031712		48.4	1.52	2.89	0.05	0.04	0.12	0.037	0.15	5.4	12.2	0.31	61	0.60	0.02	0.05
H031713		15.6	1.72	3.21	<0.05	0.02	<0.01	0.009	0.10	12.4	17.7	0.32	213	0.16	0.03	0.07
H031714		25.2	3.52	6.23	0.09	0.04	0.01	0.020	0.24	28.0	44.2	0.84	570	0.34	0.01	0.46
H031715		95.3	5.65	13.20	0.24	0.07	0.01	0.046	0.56	5.0	60.7	2.33	739	0.16	0.18	0.22
H031716		8.7	0.56	0.41	<0.05	<0.02	0.01	0.007	0.05	3.8	0.9	0.02	62	0.22	0.01	0.10
H031717		8.3	0.48	0.53	<0.05	0.04	0.01	0.011	0.06	4.5	1.3	0.03	42	0.31	0.01	0.11
H031718		38.9	2.12	4.91	0.07	0.10	0.01	0.024	0.25	6.9	19.8	0.53	268	1.65	0.03	0.21
H031719		17.5	1.11	2.18	<0.05	0.07	0.02	0.015	0.12	6.3	13.5	0.14	102	1.56	0.02	0.29
H031720		38.4	3.72	6.00	0.11	0.16	0.01	0.023	0.40	37.8	30.8	0.85	315	1.15	0.01	0.23
H031721		5.9	7.67	0.96	0.19	0.05	<0.01	0.072	0.12	5.2	2.5	0.04	31	0.36	0.02	0.50
H031722		3.8	0.52	0.28	<0.05	<0.02	<0.01	0.005	0.05	3.0	0.5	0.01	94	0.17	<0.01	0.11
H031723		3.1	0.42	0.10	<0.05	<0.02	0.01	<0.005	<0.01	1.6	0.1	<0.01	46	0.25	0.01	0.06
H031724		29.7	1.85	1.52	0.05	0.06	<0.01	0.019	0.20	11.9	5.5	0.07	71	0.31	0.01	0.30
H031725		88.1	2.74	4.01	<0.05	0.02	0.15	1.035	0.10	5.8	11.5	0.79	502	0.15	<0.01	<0.05
H031726		20.5	1.40	0.80	<0.05	0.02	<0.01	0.027	0.16	9.1	4.6	0.07	247	0.22	0.01	0.11
H031727		13.3	1.14	0.56	<0.05	0.03	<0.01	0.014	0.12	7.3	1.5	0.03	238	0.20	0.01	0.06
H031728		16.8	1.03	0.45	<0.05	0.02	<0.01	<0.005	0.12	8.1	1.0	0.02	329	0.18	0.01	0.07
H031729		6.1	0.60	0.19	<0.05	<0.02	<0.01	<0.005	0.05	3.6	0.5	0.01	311	0.22	<0.01	<0.05
H031730		10.3	1.04	0.47	<0.05	0.03	0.01	<0.005	0.04	8.0	1.6	0.02	389	0.18	0.02	0.15
H031731		4.4	0.62	0.30	<0.05	<0.02	0.01	<0.005	0.06	3.5	0.7	0.01	144	0.21	0.01	0.12
H031732		4.9	0.57	0.28	<0.05	<0.02	0.01	<0.005	0.05	3.9	0.5	<0.01	86	0.32	0.01	0.19
H031733		3.7	0.52	0.24	<0.05	<0.02	0.01	<0.005	0.05	2.7	0.3	<0.01	114	0.19	0.01	0.13



ALS Chemex

EXCELLENCE IN ANALYTICAL CHEMISTRY

ALS Canada Ltd.

2103 Dollarton Hwy
North Vancouver BC V7H 0A7
Phone: 604 984 0221 Fax: 604 984 0218 www.alschemex.com

To: OVERLAND RESOURCES LTD.
604 - 700 WEST PENDER STREET
VANCOUVER BC V6C 1G8

Page: 2 - C
Total # Pages: 4 (A - D)
Plus Appendix Pages
Finalized Date: 27-JUL-2010
Account: OVERRE

Project: YMBP

CERTIFICATE OF ANALYSIS WH10083978

Sample Description	Method	ME-MS41	ME-MS41	ME-MS41	ME-MS41	ME-MS41	ME-MS41	ME-MS41	ME-MS41	ME-MS41	ME-MS41	ME-MS41	ME-MS41	ME-MS41	ME-MS41	ME-MS41
	Analyte	Ni	P	Pb	Rb	Re	S	Sb	Sc	Se	Sn	Sr	Ta	Te	Th	Ti
	Units	ppm	ppm	ppm	ppm	ppm	%	ppm	ppm	ppm	ppm	ppm	ppm	ppm	ppm	ppm
	LOR	0.2	10	0.2	0.1	0.001	0.01	0.05	0.1	0.2	0.2	0.2	0.01	0.01	0.2	0.005
H031622		61.1	360	12.1	30.1	0.002	0.86	6.68	3.8	2.0	0.3	51.8	<0.01	0.10	3.0	0.040
H031623		31.8	310	11.7	82.2	<0.001	0.05	4.08	5.1	0.3	0.9	12.2	0.01	0.02	18.2	0.132
H031624		3.1	230	4.1	3.8	<0.001	0.02	0.42	1.9	0.2	0.3	339	0.02	0.01	4.7	0.032
H031625		47.3	370	8.7	26.2	0.001	1.41	3.08	7.2	1.3	0.7	69.6	<0.01	0.19	1.2	0.196
H031626		69.2	320	1.5	1.0	0.002	0.12	1.12	6.6	0.5	0.2	36.4	0.01	0.01	<0.2	0.182
H031627		25.1	480	7.0	31.0	<0.001	0.02	0.31	3.8	0.3	0.5	19.1	0.01	0.02	14.3	0.055
H031628		12.9	200	5.6	32.6	<0.001	0.02	1.21	2.0	0.2	0.4	16.4	<0.01	0.02	9.9	0.074
H031629		12.8	130	0.9	6.2	<0.001	0.09	0.52	1.4	<0.2	<0.2	47.3	<0.01	<0.01	8.4	<0.005
H031630		2.0	50	2930	7.5	<0.001	0.80	6.96	0.4	3.0	0.4	4.2	<0.01	0.91	2.0	<0.005
H031631		26.8	220	17.1	15.5	0.001	0.97	1.58	2.0	0.3	0.2	8.4	<0.01	0.02	13.3	<0.005
H031632		50.6	30	16.3	3.1	<0.001	1.00	0.77	1.4	0.6	<0.2	385	<0.01	0.11	1.8	<0.005
H031633		27.3	40	81.8	7.2	<0.001	>10.0	24.5	0.6	6.1	34.0	2.2	<0.01	0.03	1.5	<0.005
H031634		23.5	40	>10000	1.1	0.001	>10.0	31.9	0.4	41.2	>500	2.6	<0.01	2.04	1.1	<0.005
H031635		2.2	90	49.1	1.6	<0.001	0.08	0.35	0.2	<0.2	1.2	11.8	<0.01	0.01	0.7	<0.005
H031636		6.5	90	4960	6.3	<0.001	1.47	6.77	0.7	2.1	3.6	26.2	<0.01	0.60	4.2	<0.005
H031637		16.7	80	5680	5.7	<0.001	6.59	205	1.0	2.1	16.7	11.6	<0.01	0.11	1.7	<0.005
H031710		4.0	80	33.7	1.8	<0.001	3.33	2.14	0.6	7.2	2.5	125.5	<0.01	0.01	1.4	<0.005
H031711		19.9	60	18.8	3.4	0.001	0.19	1.28	2.0	2.2	0.2	12.2	<0.01	0.04	0.6	<0.005
H031712		30.9	40	9.0	8.3	0.001	0.51	0.47	2.4	1.4	0.3	24.1	<0.01	0.04	1.1	<0.005
H031713		10.7	100	8.2	7.2	<0.001	0.02	0.33	1.4	<0.2	0.2	5.5	<0.01	0.01	5.9	<0.005
H031714		18.9	320	10.1	15.0	<0.001	0.06	0.98	2.8	0.3	0.5	12.9	0.01	0.02	12.1	0.040
H031715		60.3	340	4.2	34.4	<0.001	0.14	0.95	14.0	0.5	1.3	65.2	0.01	0.01	2.7	0.292
H031716		2.5	30	5.1	2.8	<0.001	0.01	0.22	0.5	<0.2	<0.2	1.6	<0.01	0.01	2.0	<0.005
H031717		3.0	60	6.5	3.7	0.003	0.03	0.84	0.6	0.2	0.2	6.2	<0.01	0.04	1.1	0.007
H031718		17.7	360	6.2	23.7	0.002	0.53	2.32	2.8	2.1	0.3	40.2	<0.01	0.06	2.7	0.032
H031719		8.3	410	6.2	8.7	0.002	0.24	7.95	1.0	1.6	0.3	27.6	<0.01	0.07	1.9	0.013
H031720		30.6	440	13.8	25.2	<0.001	0.01	3.65	2.4	0.3	0.3	11.0	<0.01	0.06	15.9	0.006
H031721		13.3	130	35.5	8.0	<0.001	3.95	82.6	0.8	7.7	0.2	13.5	<0.01	12.30	7.7	<0.005
H031722		2.5	60	1.9	3.4	<0.001	0.01	3.15	0.4	<0.2	<0.2	1.2	<0.01	0.07	1.4	<0.005
H031723		1.8	40	2.5	0.3	<0.001	0.01	6.94	0.2	<0.2	<0.2	0.9	<0.01	0.02	0.4	<0.005
H031724		3.3	160	7.5	10.3	<0.001	0.11	2.33	1.0	0.2	0.4	3.9	<0.01	0.01	8.1	<0.005
H031725		8.6	120	9120	5.5	<0.001	0.34	20.3	2.3	0.3	14.2	2.2	<0.01	0.03	3.3	0.005
H031726		7.7	230	80.0	8.2	<0.001	0.18	6.14	0.8	<0.2	0.3	4.2	<0.01	0.01	6.1	<0.005
H031727		5.5	180	42.2	6.0	<0.001	0.14	10.90	0.7	<0.2	0.2	2.5	<0.01	0.01	4.6	<0.005
H031728		10.5	150	6.3	5.6	<0.001	0.08	5.86	0.6	<0.2	<0.2	2.5	<0.01	0.01	4.2	<0.005
H031729		3.8	50	9.3	3.1	<0.001	0.04	136.0	0.4	<0.2	0.2	1.4	<0.01	<0.01	1.7	<0.005
H031730		9.7	100	5.7	2.4	<0.001	<0.01	58.3	0.6	<0.2	<0.2	3.2	<0.01	0.01	5.4	<0.005
H031731		4.5	50	3.6	3.6	<0.001	<0.01	4.59	0.3	<0.2	<0.2	1.4	<0.01	<0.01	1.7	<0.005
H031732		3.6	60	3.7	3.1	<0.001	<0.01	3.63	0.3	<0.2	<0.2	1.2	<0.01	<0.01	1.7	<0.005
H031733		2.3	30	24.6	3.0	<0.001	<0.01	8.01	0.3	<0.2	<0.2	0.8	<0.01	0.07	1.1	<0.005



ALS Chemex

EXCELLENCE IN ANALYTICAL CHEMISTRY

ALS Canada Ltd.

2103 Dollarton Hwy
North Vancouver BC V7H 0A7
Phone: 604 984 0221 Fax: 604 984 0218 www.alschemex.com

To: OVERLAND RESOURCES LTD.
604 - 700 WEST PENDER STREET
VANCOUVER BC V6C 1G8

Page: 2 - D
Total # Pages: 4 (A - D)
Plus Appendix Pages
Finalized Date: 27-JUL-2010
Account: OVERRE

Project: YMBP

CERTIFICATE OF ANALYSIS WH10083978

Sample Description	Method Analyte Units LOR	ME-MS41	ME-MS41	ME-MS41	ME-MS41	ME-MS41	ME-MS41	ME-MS41	Ag-OG46	Pb-OG46	Cu-OG46	Zn-OG46
		Tl	U	V	W	Y	Zn	Zr	Ag	Pb	Cu	Zn
		ppm	ppm	ppm	ppm	ppm	ppm	ppm	ppm	%	%	%
		0.02	0.05	1	0.05	0.05	2	0.5	1	0.001	0.001	0.001
H031622		0.26	0.65	69	0.17	3.99	124	5.6				
H031623		0.61	1.57	34	0.65	7.16	82	14.6				
H031624		0.02	0.18	3	0.24	5.21	7	1.0				
H031625		0.23	0.14	189	0.26	4.89	63	0.6				
H031626		<0.02	<0.05	55	<0.05	4.00	26	0.5				
H031627		0.20	0.70	25	0.32	8.62	45	1.7				
H031628		0.21	0.52	13	0.17	3.30	34	5.2				
H031629		0.04	0.52	8	0.31	3.09	23	1.1				
H031630		0.10	0.12	1	0.13	1.15	6	1.0				
H031631		0.11	1.12	14	0.11	2.32	36	8.8				
H031632		0.02	0.30	2	0.14	10.70	7	0.5				
H031633		0.16	0.16	2	0.35	0.64	20	0.9	456	2.50	2.60	7.93
H031634		0.29	0.73	1	0.07	1.61	>10000	0.7				
H031635		<0.02	0.08	<1	0.49	1.09	185	<0.5				
H031636		0.07	0.47	6	0.12	3.61	4390	0.6				
H031637		0.07	0.16	8	0.28	4.31	6070	0.6				
H031710		0.03	0.14	<1	0.07	1.47	>10000	1.9				8.02
H031711		0.02	0.11	27	0.23	0.89	244	1.4				
H031712		0.05	0.19	30	0.08	1.61	417	2.0				
H031713		0.05	0.32	11	0.16	1.52	31	1.0				
H031714		0.12	0.89	25	0.15	6.25	68	1.4				
H031715		0.50	0.27	195	0.21	7.54	75	1.0				
H031716		0.02	0.18	1	0.12	0.47	36	<0.5				
H031717		0.04	0.26	5	0.10	1.00	9	1.7				
H031718		0.24	0.98	72	0.11	4.67	62	5.3				
H031719		0.09	0.49	24	0.18	2.69	16	3.0				
H031720		0.19	0.80	18	0.09	3.74	71	9.0				
H031721		0.05	0.52	3	0.13	1.41	4	2.4				
H031722		0.02	0.10	1	0.09	0.35	10	<0.5				
H031723		<0.02	<0.05	<1	0.22	0.28	3	<0.5				
H031724		0.07	0.55	4	0.13	1.69	31	2.5				
H031725		0.06	0.16	54	0.18	1.32	434	0.9				
H031726		0.07	0.54	4	0.12	3.07	35	0.7				
H031727		0.05	0.36	3	0.20	1.81	16	1.0				
H031728		0.07	0.30	2	0.12	2.13	21	0.8				
H031729		0.03	0.19	1	0.18	0.76	12	<0.5				
H031730		0.02	0.43	1	0.17	1.80	20	1.1				
H031731		0.04	0.21	1	0.23	0.63	5	<0.5				
H031732		0.02	0.12	1	0.22	0.46	4	<0.5				
H031733		0.02	0.11	1	0.25	0.48	15	<0.5				

***** See Appendix Page for comments regarding this certificate *****



ALS Chemex

EXCELLENCE IN ANALYTICAL CHEMISTRY

ALS Canada Ltd.

2103 Dollarton Hwy

North Vancouver BC V7H 0A7

Phone: 604 984 0221 Fax: 604 984 0218 www.alschemex.com

To: OVERLAND RESOURCES LTD.
604 - 700 WEST PENDER STREET
VANCOUVER BC V6C 1G8

Page: 3 - A
Total # Pages: 4 (A - D)
Plus Appendix Pages
Finalized Date: 27-JUL-2010
Account: OVERRE

Project: YMBP

CERTIFICATE OF ANALYSIS WH10083978

Sample Description	Method Analyte Units LOR	WEI-21	ME-MS41	ME-MS41	ME-MS41	ME-MS41	ME-MS41	ME-MS41	ME-MS41	ME-MS41	ME-MS41	ME-MS41	ME-MS41	ME-MS41	ME-MS41	ME-MS41	ME-MS41
		Recvd Wt. kg	Ag ppm	Al %	As ppm	Au ppm	B ppm	Ba ppm	Be ppm	Bi ppm	Ca %	Cd ppm	Ce ppm	Co ppm	Cr ppm	Cs ppm	
H031734		1.67	0.17	0.07	9.6	<0.2	<10	30	0.05	0.36	<0.01	0.04	7.46	0.9	16	0.39	
H031735		1.18	0.05	1.24	37.6	<0.2	<10	60	0.34	0.14	0.06	0.25	63.7	9.5	12	1.48	
H031736		1.59	0.11	0.78	46.7	<0.2	<10	130	0.24	0.23	0.06	0.35	37.5	7.6	12	0.73	
H031737		1.52	0.07	1.30	11.8	<0.2	<10	70	0.19	0.18	0.04	0.11	38.0	8.6	16	0.50	
H031738		1.23	0.03	0.72	2.4	<0.2	<10	50	0.16	0.05	0.04	0.20	29.4	4.7	22	1.09	
H031739		1.60	0.10	1.35	1.8	<0.2	<10	330	0.44	0.21	0.12	0.23	31.7	10.2	19	4.14	
H031740		1.13	0.27	0.61	8.4	<0.2	<10	160	0.31	0.12	0.08	2.46	15.15	5.3	19	2.14	
H031741		1.13	0.01	0.04	<2	<0.2	<10	100	0.07	0.01	>25.0	0.68	4.78	1.1	1	0.24	
H031742		0.94	8.43	0.13	2910	<0.2	<10	150	<0.05	5.62	0.18	2.54	4.83	1.3	18	0.27	
H031743		2.16	>100	0.04	31.9	<0.2	<10	20	<0.05	0.13	0.02	16.90	1.98	1.0	5	0.11	
H031744		2.03	>100	0.31	828	<0.2	<10	60	0.14	480	0.01	0.76	7.79	0.4	1	0.29	
H031556		0.81	2.04	0.32	19.8	<0.2	<10	160	0.45	2.46	0.01	0.39	23.1	13.1	11	1.29	
H031557		1.29	0.71	0.35	69.8	<0.2	<10	360	0.43	0.34	0.03	0.50	5.87	5.7	25	3.47	
H031558		1.06	0.12	0.72	2.1	<0.2	<10	320	1.06	0.48	7.14	0.93	15.60	12.6	8	0.70	
H031559		0.87	0.20	0.70	3.1	<0.2	<10	550	0.38	0.29	0.05	0.08	25.1	3.7	10	1.44	
H031560		1.60	0.13	0.18	5.7	<0.2	<10	70	0.11	0.20	0.24	0.03	14.05	3.6	8	0.27	
H031561		1.10	0.08	0.29	3.1	<0.2	<10	30	0.09	0.16	0.44	0.04	8.13	1.0	12	0.35	
H031562		1.01	0.04	2.64	7.0	<0.2	<10	40	0.56	0.05	0.07	0.02	91.9	13.6	29	0.97	
H031563		1.43	0.09	0.14	2.8	<0.2	<10	360	<0.05	0.05	0.02	0.02	3.55	1.7	19	0.54	
H031564		1.36	0.06	0.27	3.3	<0.2	<10	40	0.06	0.11	0.01	0.11	27.3	3.7	32	0.16	
H031565		1.24	0.04	0.47	19.1	<0.2	<10	40	0.15	0.17	0.02	0.03	39.4	3.1	15	0.37	
H031566		1.32	0.23	0.25	63.6	<0.2	<10	40	0.42	0.27	0.03	0.04	20.9	4.1	11	0.68	
H031567		1.03	0.06	0.59	11.8	<0.2	<10	40	0.21	0.09	0.17	0.16	23.6	7.9	11	0.91	
H031568		1.51	0.04	0.17	7.7	<0.2	<10	50	0.06	0.04	0.30	0.16	3.76	2.1	20	0.16	
H031569		1.20	0.12	0.48	12.9	<0.2	<10	30	0.10	0.38	0.29	0.10	8.80	2.1	16	0.19	
H031570		1.22	1.25	0.11	153.5	0.2	<10	20	0.06	0.09	0.01	0.21	11.65	0.7	14	1.06	
H031571		1.83	0.53	0.21	55.6	<0.2	<10	40	0.15	0.46	0.07	0.08	12.30	7.0	23	1.08	
H031572		1.58	71.3	0.68	536	<0.2	<10	50	0.40	39.9	0.40	97.3	26.7	23.2	8	1.55	
H031573		1.27	81.9	0.62	528	<0.2	<10	50	0.33	56.2	0.52	134.5	22.0	25.4	7	1.34	
H031574		0.84	1.79	0.55	5.8	<0.2	<10	60	0.16	1.87	0.93	5.21	18.85	5.3	11	1.55	
H031575		1.40	17.00	1.73	113.0	<0.2	<10	70	0.42	32.8	0.18	114.0	19.45	23.8	46	1.76	
H031576		1.32	5.48	0.32	4.5	<0.2	<10	20	0.07	4.19	0.48	3.84	8.67	9.7	27	0.81	
H031768		0.85	0.20	4.24	31.1	<0.2	<10	170	1.90	1.10	1.76	0.33	36.7	18.0	52	4.81	
H031769		1.60	2.98	0.83	36.7	<0.2	<10	10	0.16	10.05	0.77	0.29	7.88	53.0	1	0.20	
H031770		1.20	0.43	1.95	199.0	<0.2	<10	90	1.18	1.52	0.46	0.22	35.1	18.7	25	7.09	
H031771		0.92	0.26	5.31	108.0	<0.2	<10	120	1.63	2.71	3.01	0.06	22.2	19.0	40	2.90	
H031772		1.39	0.20	5.05	38.4	<0.2	<10	240	0.67	0.49	1.54	0.04	16.35	30.9	100	6.88	
H031773		0.98	0.19	0.26	10.1	<0.2	<10	220	0.28	0.14	<0.01	0.18	16.65	1.8	15	1.16	
H031774		1.16	0.15	0.28	29.4	<0.2	<10	160	0.26	0.12	0.01	0.15	8.68	2.2	14	1.98	
H031775		0.86	0.36	0.21	42.6	<0.2	<10	420	0.30	0.11	<0.01	0.15	12.00	4.2	16	1.65	



ALS Chemex

EXCELLENCE IN ANALYTICAL CHEMISTRY

ALS Canada Ltd.

2103 Dollarton Hwy
North Vancouver BC V7H 0A7
Phone: 604 984 0221 Fax: 604 984 0218 www.alschemex.com

To: OVERLAND RESOURCES LTD.
604 - 700 WEST PENDER STREET
VANCOUVER BC V6C 1G8

Page: 3 - B
Total # Pages: 4 (A - D)
Plus Appendix Pages
Finalized Date: 27-JUL-2010
Account: OVERRE

Project: YMBP

CERTIFICATE OF ANALYSIS WH10083978

Sample Description	ME-MS41	ME-MS41	ME-MS41	ME-MS41	ME-MS41	ME-MS41	ME-MS41	ME-MS41	ME-MS41	ME-MS41	ME-MS41	ME-MS41	ME-MS41	ME-MS41	ME-MS41
	Cu	Fe	Ga	Ge	Hf	Hg	In	K	La	Li	Mg	Mn	Mo	Na	Nb
	ppm	%	ppm	ppm	ppm	ppm	ppm	%	ppm	ppm	%	ppm	ppm	%	ppm
	0.2	0.01	0.05	0.05	0.02	0.01	0.005	0.01	0.2	0.1	0.01	5	0.05	0.01	0.05
H031734	11.0	1.03	0.26	<0.05	<0.02	0.01	0.007	0.05	3.5	0.4	<0.01	57	0.17	0.01	0.37
H031735	24.4	2.37	3.58	0.09	0.04	0.01	0.010	0.27	28.5	15.7	0.43	342	0.32	0.01	0.14
H031736	30.0	2.21	2.73	0.07	0.02	0.01	0.009	0.18	17.0	9.7	0.32	371	0.23	0.02	0.18
H031737	22.8	2.95	4.51	0.08	0.03	0.01	0.009	0.14	17.3	19.7	0.59	380	0.21	0.01	0.17
H031738	5.3	1.78	2.86	0.06	0.16	0.01	0.020	0.08	12.8	16.7	0.28	366	0.18	0.02	0.15
H031739	28.8	2.94	4.02	0.08	0.07	0.01	0.016	0.13	15.4	29.1	0.53	684	0.17	0.01	0.13
H031740	30.7	1.56	2.47	0.05	0.06	0.01	0.017	0.11	7.2	11.4	0.28	258	0.89	0.01	0.13
H031741	1.4	0.40	0.15	<0.05	0.02	0.02	<0.005	0.02	3.3	0.8	0.12	200	<0.05	0.02	0.25
H031742	352	2.24	0.49	<0.05	0.06	0.01	0.216	0.09	2.2	0.5	0.01	40	0.36	0.01	0.13
H031743	54.3	0.27	1.33	0.10	0.02	5.95	0.262	0.02	1.0	0.2	<0.01	23	0.10	0.01	0.12
H031744	1610	22.4	6.99	0.63	0.08	0.48	91.3	0.03	4.4	0.4	<0.01	8	0.28	0.01	0.31
H031556	62.8	4.41	0.82	0.07	0.06	0.11	0.380	0.09	9.9	3.6	0.03	485	1.61	0.01	0.19
H031557	92.7	8.77	2.05	0.13	0.06	0.23	0.070	0.09	2.7	0.8	0.02	190	7.25	0.01	0.16
H031558	37.7	2.93	1.91	0.07	0.11	0.03	0.068	0.29	7.2	3.9	0.38	1120	0.24	0.02	0.13
H031559	30.8	1.46	2.91	0.05	0.10	0.06	0.028	0.23	10.8	4.4	0.17	65	0.50	0.01	0.18
H031560	3.6	1.04	0.58	<0.05	0.14	0.02	0.033	0.10	5.2	0.5	0.01	400	0.21	0.02	0.12
H031561	3.1	0.97	0.64	<0.05	0.02	0.02	0.014	0.02	3.6	5.7	0.14	553	0.17	0.03	0.18
H031562	15.6	4.63	8.59	0.15	0.16	0.01	0.018	0.18	42.2	45.8	1.08	548	0.87	0.03	0.13
H031563	9.4	0.65	0.78	<0.05	<0.02	0.02	0.010	0.03	1.6	3.2	0.06	201	0.18	0.01	0.17
H031564	4.1	1.02	1.66	<0.05	0.20	0.01	0.017	0.01	12.3	6.0	0.08	285	0.52	0.03	0.11
H031565	11.5	1.06	1.88	0.06	0.11	0.01	0.012	0.10	17.8	7.6	0.19	152	0.29	0.01	0.16
H031566	10.6	1.57	0.87	0.05	0.04	0.01	0.015	0.15	9.6	1.0	0.02	285	0.25	0.02	0.12
H031567	8.3	1.50	2.00	0.05	0.04	0.01	0.010	0.14	10.3	8.7	0.19	591	0.18	0.02	0.13
H031568	2.7	0.56	0.58	<0.05	<0.02	0.01	0.006	0.02	1.8	3.1	0.07	298	0.19	0.01	0.11
H031569	7.5	1.30	1.70	<0.05	0.02	0.01	0.008	0.02	4.2	10.1	0.24	532	0.13	0.03	0.13
H031570	7.5	0.50	0.40	<0.05	0.04	0.01	0.009	0.08	5.4	1.1	0.01	62	0.15	0.01	0.12
H031571	60.0	2.64	0.65	0.05	0.03	0.01	0.010	0.15	5.5	1.2	0.04	94	0.25	0.02	0.16
H031572	9340	12.60	2.12	0.19	0.08	0.10	7.03	0.30	13.9	7.2	0.28	444	0.79	0.01	0.21
H031573	9190	16.40	1.99	0.24	0.07	0.14	8.60	0.27	11.8	6.5	0.26	548	0.65	0.02	0.26
H031574	67.4	2.61	2.03	0.07	0.02	0.01	0.144	0.07	9.0	6.8	0.25	587	0.17	0.01	<0.05
H031575	1195	5.52	5.41	0.11	0.05	0.03	2.49	0.18	8.5	28.5	0.85	586	0.30	0.02	0.40
H031576	432	3.64	1.26	0.07	<0.02	0.01	0.127	0.07	4.1	4.9	0.14	248	0.19	0.01	0.13
H031768	72.1	3.68	13.30	0.12	0.39	0.01	0.023	0.63	20.0	45.9	1.00	455	0.80	0.36	0.28
H031769	2090	38.1	4.56	1.04	0.05	0.02	0.147	0.01	4.2	2.4	0.02	205	0.46	0.03	0.60
H031770	113.5	3.69	6.24	0.11	0.60	<0.01	0.011	0.61	19.1	25.1	0.98	548	1.21	0.09	0.47
H031771	55.3	4.01	16.25	0.13	0.25	<0.01	0.014	0.55	11.3	22.9	0.58	337	1.23	0.28	0.63
H031772	174.5	5.78	17.95	0.19	0.03	0.01	0.040	1.58	8.1	51.4	1.70	381	0.31	0.25	0.22
H031773	43.1	1.31	1.20	0.05	0.05	0.04	0.016	0.10	9.1	1.3	0.02	51	0.91	0.01	0.06
H031774	27.7	2.77	1.11	0.05	0.04	0.02	0.014	0.10	5.0	1.6	0.02	80	1.25	<0.01	0.08
H031775	38.0	3.05	1.39	0.06	0.04	0.04	0.030	0.11	7.8	0.5	0.02	3790	1.43	0.01	0.07



ALS Chemex

EXCELLENCE IN ANALYTICAL CHEMISTRY

ALS Canada Ltd.

2103 Dollarton Hwy
North Vancouver BC V7H 0A7
Phone: 604 984 0221 Fax: 604 984 0218 www.alschemex.com

To: OVERLAND RESOURCES LTD.
604 - 700 WEST PENDER STREET
VANCOUVER BC V6C 1G8

Page: 3 - C
Total # Pages: 4 (A - D)
Plus Appendix Pages
Finalized Date: 27-JUL-2010
Account: OVERRE

Project: YMBP

CERTIFICATE OF ANALYSIS WH10083978

Sample Description	Method	ME-MS41	ME-MS41	ME-MS41	ME-MS41	ME-MS41	ME-MS41	ME-MS41	ME-MS41	ME-MS41	ME-MS41	ME-MS41	ME-MS41	ME-MS41	ME-MS41	
	Analyte	Ni	P	Pb	Rb	Re	S	Sb	Sc	Se	Sn	Sr	Ta	Te	Th	Ti
Units		ppm	ppm	ppm	ppm	ppm	%	ppm	ppm	ppm	ppm	ppm	ppm	ppm	ppm	%
LOR		0.2	10	0.2	0.1	0.001	0.01	0.05	0.1	0.2	0.2	0.2	0.01	0.01	0.2	0.005
H031734		3.0	30	25.2	2.7	<0.001	0.01	5.53	0.2	<0.2	0.2	1.0	<0.01	0.01	1.7	<0.005
H031735		22.0	370	5.5	13.1	<0.001	<0.01	1.01	1.4	0.2	0.2	9.8	<0.01	0.01	15.1	<0.005
H031736		15.0	330	13.1	9.1	<0.001	0.04	0.30	1.0	0.3	0.2	10.1	<0.01	0.01	9.3	<0.005
H031737		18.2	190	3.7	7.1	<0.001	0.01	0.22	1.8	<0.2	<0.2	4.3	<0.01	0.01	8.6	0.007
H031738		12.6	180	4.9	6.6	<0.001	0.03	0.41	1.2	0.2	0.2	5.6	<0.01	<0.01	7.5	<0.005
H031739		20.9	320	118.5	8.4	<0.001	0.02	0.90	2.3	0.2	0.3	14.2	<0.01	0.07	3.5	0.007
H031740		27.5	250	13.2	6.6	0.001	0.08	1.70	2.1	1.2	0.2	9.7	<0.01	0.05	1.7	<0.005
H031741		2.3	120	12.2	1.0	<0.001	0.01	0.15	0.9	0.3	<0.2	2190	<0.01	0.04	0.4	<0.005
H031742		3.1	60	442	5.1	<0.001	1.46	6.75	0.4	1.1	18.9	24.1	<0.01	0.02	2.0	<0.005
H031743		5.7	20	>10000	1.5	<0.001	8.40	267	0.2	1.4	0.9	5.8	<0.01	<0.01	0.4	<0.005
H031744		1.9	980	>10000	1.0	0.002	4.43	291	1.1	78.6	>500	63.8	<0.01	0.19	2.0	<0.005
H031556		42.1	500	3110	4.9	<0.001	0.04	8.14	3.8	1.0	23.2	3.7	<0.01	0.05	1.9	<0.005
H031557		68.7	860	307	5.9	0.003	0.02	21.0	2.2	5.7	2.2	7.7	<0.01	0.08	1.2	<0.005
H031558		28.9	600	125.0	13.8	<0.001	<0.01	0.19	8.5	0.4	1.7	32.5	<0.01	0.04	6.7	<0.005
H031559		11.7	320	68.6	17.0	0.002	0.01	0.35	2.1	0.8	0.8	10.6	<0.01	0.06	3.6	<0.005
H031560		7.5	150	122.0	5.7	<0.001	<0.01	0.58	1.2	<0.2	1.3	9.0	<0.01	<0.01	5.3	<0.005
H031561		2.6	140	135.0	1.7	<0.001	<0.01	0.37	0.7	<0.2	0.4	6.3	<0.01	<0.01	2.9	<0.005
H031562		36.6	340	26.5	9.4	<0.001	<0.01	0.34	2.3	0.2	0.4	8.2	<0.01	<0.01	18.8	<0.005
H031563		5.4	60	71.6	1.5	<0.001	<0.01	0.72	0.6	<0.2	0.3	4.4	<0.01	<0.01	0.5	<0.005
H031564		12.3	60	57.6	0.5	<0.001	0.01	0.25	0.9	0.2	0.7	3.9	<0.01	<0.01	4.8	<0.005
H031565		5.9	190	30.8	5.7	<0.001	<0.01	0.63	0.8	<0.2	0.3	2.3	<0.01	0.02	4.3	<0.005
H031566		8.2	180	31.6	8.8	<0.001	0.47	0.71	0.7	0.2	0.4	4.1	<0.01	0.02	9.0	<0.005
H031567		15.9	670	21.6	7.2	<0.001	0.04	0.43	1.0	<0.2	0.2	13.4	<0.01	0.02	9.1	<0.005
H031568		6.2	200	20.5	1.4	<0.001	<0.01	0.19	0.3	<0.2	0.3	12.2	<0.01	<0.01	1.0	<0.005
H031569		8.1	270	24.8	1.4	<0.001	0.05	0.54	1.0	<0.2	<0.2	12.9	<0.01	0.01	2.2	<0.005
H031570		2.2	20	25.6	5.1	<0.001	<0.01	12.45	0.3	<0.2	0.3	2.1	<0.01	0.02	1.7	<0.005
H031571		7.3	60	53.3	8.0	<0.001	1.34	14.85	0.5	0.3	0.3	4.4	<0.01	0.03	5.2	<0.005
H031572		42.0	160	2070	17.3	0.001	>10.0	6.35	1.8	6.1	133.0	13.2	<0.01	0.17	9.5	0.012
H031573		46.9	130	2960	15.3	0.001	>10.0	8.73	1.8	8.8	153.5	15.0	<0.01	0.24	8.1	0.008
H031574		9.4	100	524	4.6	<0.001	1.76	16.25	1.6	0.7	7.8	22.0	<0.01	0.02	4.9	<0.005
H031575		28.7	220	633	10.0	<0.001	2.51	1.56	3.4	2.0	24.1	7.1	0.01	0.13	7.3	0.071
H031576		19.6	90	145.0	4.3	<0.001	2.22	16.00	1.3	1.2	7.2	8.9	<0.01	0.02	2.4	<0.005
H031768		45.8	460	22.8	55.4	0.002	1.41	1.18	8.4	1.5	2.4	277	<0.01	0.08	14.4	0.127
H031769		23.2	830	13.4	0.5	0.001	>10.0	1.31	0.6	94.1	2.2	41.8	<0.01	1.51	2.7	0.014
H031770		54.6	510	19.7	58.8	0.003	1.38	0.37	3.9	2.4	4.4	52.2	<0.01	0.09	14.9	0.131
H031771		40.4	470	17.2	48.9	0.001	2.04	1.40	5.9	2.1	1.8	334	0.01	0.18	9.0	0.107
H031772		64.3	380	11.5	80.3	0.002	0.41	0.92	20.8	0.5	1.5	76.6	<0.01	0.02	5.1	0.227
H031773		18.8	140	11.6	5.1	<0.001	0.02	2.08	0.9	1.1	0.2	16.0	<0.01	0.06	1.9	<0.005
H031774		19.9	200	11.9	5.6	<0.001	0.01	3.01	2.1	0.8	0.2	3.9	<0.01	0.05	1.6	<0.005
H031775		32.8	660	7.2	5.9	<0.001	0.05	5.79	4.2	0.6	0.2	4.6	<0.01	0.03	1.3	<0.005

***** See Appendix Page for comments regarding this certificate *****



ALS Chemex

EXCELLENCE IN ANALYTICAL CHEMISTRY

ALS Canada Ltd.

2103 Dollarton Hwy
 North Vancouver BC V7H 0A7
 Phone: 604 984 0221 Fax: 604 984 0218 www.alschemex.com

To: OVERLAND RESOURCES LTD.
 604 - 700 WEST PENDER STREET
 VANCOUVER BC V6C 1G8

Page: 3 - D
 Total # Pages: 4 (A - D)
 Plus Appendix Pages
 Finalized Date: 27-JUL-2010
 Account: OVERRE

Project: YMBP

CERTIFICATE OF ANALYSIS WH10083978

Sample Description	Method Analyte Units LOR	ME-MS41	ME-MS41	ME-MS41	ME-MS41	ME-MS41	ME-MS41	ME-MS41	Ag-OG46	Pb-OG46	Cu-OG46	Zn-OG46
		Ti	U	V	W	Y	Zn	Zr	Ag	Pb	Cu	Zn
		ppm	ppm	ppm	ppm	ppm	ppm	ppm	ppm	%	%	%
		0.02	0.05	1	0.05	0.05	2	0.5	1	0.001	0.001	0.001
H031734		0.02	0.14	1	0.17	0.69	23	<0.5				
H031735		0.09	0.87	11	0.14	4.38	41	1.5				
H031736		0.06	0.79	7	0.14	3.96	50	0.8				
H031737		0.05	0.76	15	0.13	3.50	42	1.0				
H031738		0.03	0.52	8	0.14	3.62	46	5.6				
H031739		0.06	0.32	23	0.14	5.57	54	2.5				
H031740		0.09	0.23	27	0.13	3.59	127	2.4				
H031741		<0.02	1.21	2	0.10	4.86	49	1.1				
H031742		0.09	0.11	1	0.67	0.52	99	2.5				
H031743		0.54	0.07	<1	0.12	0.26	6930	0.8	107	>20.0		
H031744		0.04	1.12	4	0.13	1.12	1560	3.1	220	>20.0		
H031556		0.28	0.50	23	0.15	4.25	135	2.7				
H031557		0.41	0.81	95	0.14	4.66	177	3.9				
H031558		0.08	0.53	9	0.13	16.35	68	4.1				
H031559		0.08	0.43	21	0.11	3.02	48	4.7				
H031560		0.03	0.39	1	0.18	2.16	6	5.1				
H031561		<0.02	0.26	1	0.17	1.41	13	0.5				
H031562		0.05	0.89	17	0.12	3.22	90	7.1				
H031563		<0.02	0.06	4	0.18	0.32	13	0.5				
H031564		<0.02	0.38	9	0.14	2.96	26	6.5				
H031565		0.03	0.21	5	0.12	2.13	13	4.2				
H031566		0.07	0.51	2	0.29	2.20	13	1.9				
H031567		0.05	0.75	5	0.14	3.92	17	1.7				
H031568		0.02	0.16	1	0.18	1.24	7	<0.5				
H031569		<0.02	0.24	5	0.14	2.59	15	0.5				
H031570		0.04	0.16	1	0.23	0.72	20	1.8				
H031571		0.06	0.44	2	0.20	1.02	10	1.3				
H031572		0.13	1.02	8	0.10	3.70	7510	3.0				
H031573		0.13	0.92	7	0.09	3.96	>10000	2.6			1.065	
H031574		0.12	0.37	11	0.09	6.39	333	<0.5				
H031575		0.14	0.64	42	0.52	7.08	3620	1.5				
H031576		0.09	0.27	16	0.16	2.68	160	0.5				
H031768		0.39	1.39	49	0.21	8.70	56	15.8				
H031769		0.04	5.64	2	<0.05	3.35	52	1.8				
H031770		0.58	1.51	25	0.24	8.13	52	23.7				
H031771		0.53	0.95	37	0.10	7.06	28	9.9				
H031772		0.58	0.52	197	0.05	7.82	75	0.6				
H031773		0.06	0.51	18	<0.05	2.90	47	2.4				
H031774		0.07	0.28	20	<0.05	2.05	61	2.3				
H031775		0.21	0.46	49	<0.05	2.66	159	1.9				



ALS Chemex

EXCELLENCE IN ANALYTICAL CHEMISTRY

ALS Canada Ltd.

2103 Dollarton Hwy

North Vancouver BC V7H 0A7

Phone: 604 984 0221 Fax: 604 984 0218 www.alschemex.com

To: OVERLAND RESOURCES LTD.
604 - 700 WEST PENDER STREET
VANCOUVER BC V6C 1G8

Page: Appendix 1
Total # Appendix Pages: 1
Finalized Date: 27-JUL-2010
Account: OVERRE

Project: YMBP

CERTIFICATE OF ANALYSIS WH10083978

Method	CERTIFICATE COMMENTS
ME-MS41 ME-MS41	Interference: Ca>10% on ICP-MS As,ICP-AES results shown. Gold determinations by this method are semi-quantitative due to the small sample weight used (0.5g).



ALS Chemex

EXCELLENCE IN ANALYTICAL CHEMISTRY

ALS Canada Ltd.

2103 Dollarton Hwy

North Vancouver BC V7H 0A7

Phone: 604 984 0221 Fax: 604 984 0218 www.alschemex.com

To: **OVERLAND RESOURCES LTD.**
604 - 700 WEST PENDER STREET
VANCOUVER BC V6C 1G8

Page: 1
Finalized Date: 17-JUL-2010
Account: OVERRE

CERTIFICATE WH10089475

Project: YBMP
P.O. No.:
This report is for 88 Soil samples submitted to our lab in Whitehorse, YT, Canada on 2-JUL-2010.

The following have access to data associated with this certificate:

HUGH BRESSER	COLWIN LLOYD	ALEX TOLSON
--------------	--------------	-------------

SAMPLE PREPARATION

ALS CODE	DESCRIPTION
WEI-21	Received Sample Weight
DRY-22	Drying - Maximum Temp 60C
LOG-22	Sample login - Rcd w/o BarCode
SCR-41	Screen to -180um and save both

ANALYTICAL PROCEDURES

ALS CODE	DESCRIPTION
ME-MS41	51 anal. aqua regia ICPMS

To: **OVERLAND RESOURCES LTD.**
ATTN: HUGH BRESSER
2ND FLOOR
675 MURRAY ST
WEST PERTH WA 6005
AUSTRALIA

This is the Final Report and supersedes any preliminary report with this certificate number. Results apply to samples as submitted. All pages of this report have been checked and approved for release.

Signature: 
Colin Ramshaw, Vancouver Laboratory Manager



ALS Chemex

EXCELLENCE IN ANALYTICAL CHEMISTRY

ALS Canada Ltd.

2103 Dollarton Hwy
North Vancouver BC V7H 0A7

Phone: 604 984 0221 Fax: 604 984 0218 www.alschemex.com

To: OVERLAND RESOURCES LTD.
604 - 700 WEST PENDER STREET
VANCOUVER BC V6C 1G8

Page: 2 - A
Total # Pages: 4 (A - D)
Plus Appendix Pages
Finalized Date: 17-JUL-2010
Account: OVERRE

Project: YBMP

CERTIFICATE OF ANALYSIS WH10089475

Sample Description	Method Analyte Units LOR	WEI-21	ME-MS41	ME-MS41	ME-MS41	ME-MS41	ME-MS41	ME-MS41	ME-MS41	ME-MS41	ME-MS41	ME-MS41	ME-MS41	ME-MS41	ME-MS41	ME-MS41
		Recvd Wt. kg 0.02	Ag ppm 0.01	Al % 0.01	As ppm 0.1	Au ppm 0.2	B ppm 10	Ba ppm 10	Be ppm 0.05	Bi ppm 0.01	Ca % 0.01	Cd ppm 0.01	Ce ppm 0.02	Co ppm 0.1	Cr ppm 1	Cs ppm 0.05
G0669701		0.64	0.43	1.32	41.0	<0.2	<10	960	0.62	0.42	0.05	3.10	43.4	10.4	22	3.72
G0669702		0.48	0.33	1.39	38.0	<0.2	<10	600	0.45	0.57	0.04	0.77	31.0	7.5	23	2.51
G0669703		0.58	0.37	1.60	59.4	<0.2	<10	880	0.54	0.52	0.04	0.89	31.0	12.1	24	2.18
G0669704		0.50	1.17	1.62	72.3	<0.2	<10	770	0.51	0.77	0.04	0.55	33.1	8.5	25	2.64
G0669705		0.50	0.44	1.53	30.8	<0.2	<10	690	0.68	0.56	0.07	1.68	33.5	12.7	24	3.49
G0669706		0.50	0.49	1.99	35.0	<0.2	<10	750	0.86	0.59	0.06	1.06	34.4	15.3	30	6.63
G0669707		0.64	0.14	1.70	42.4	<0.2	<10	220	1.18	0.35	0.10	0.58	35.5	21.7	24	3.22
G0669708		0.54	0.23	1.76	38.2	<0.2	<10	630	1.08	0.49	0.08	0.85	36.5	21.4	35	3.16
G0669709		0.56	0.20	1.25	8.4	<0.2	<10	410	0.64	0.49	0.07	2.73	35.7	37.6	18	1.73
G0669710		0.58	0.31	1.35	23.1	<0.2	<10	340	0.70	0.49	0.11	0.83	29.7	11.3	18	2.16
G0669711		0.62	0.13	1.81	63.6	<0.2	<10	400	0.92	0.90	0.12	2.94	38.4	13.7	27	2.75
G0669712		0.38	0.11	1.85	79.9	<0.2	<10	210	0.79	1.05	0.07	1.25	36.6	10.3	26	3.05
G0669713		0.62	0.56	2.56	131.5	<0.2	<10	310	1.39	0.85	0.58	0.77	49.6	15.8	29	4.31
G0669714		0.66	0.08	1.14	16.1	<0.2	<10	100	0.46	0.40	0.09	0.46	47.9	12.4	19	4.63
G0669715		0.46	0.64	1.17	25.5	<0.2	<10	290	1.18	0.30	0.75	2.27	56.6	12.2	15	4.26
G0669716		0.80	0.11	0.98	11.6	<0.2	<10	150	0.58	0.43	0.13	0.84	79.4	9.1	15	3.77
G0669717		0.40	0.40	0.62	8.8	<0.2	<10	160	0.33	0.16	0.29	0.79	21.6	4.0	8	2.02
G0669718		0.64	0.29	1.00	14.0	<0.2	<10	150	0.87	0.36	0.16	1.10	103.5	11.9	17	4.87
G0669719		0.68	0.25	1.00	17.1	<0.2	<10	150	0.75	0.36	0.17	1.07	89.8	11.0	16	5.04
G0669720		0.74	0.46	1.00	16.6	<0.2	<10	160	0.99	0.33	0.33	6.16	78.2	12.7	17	3.62
G0669721		0.80	0.71	0.97	20.5	<0.2	<10	140	0.94	0.36	0.31	4.13	101.5	9.2	14	3.94
G0669722		0.56	0.32	0.96	12.8	<0.2	<10	180	0.97	0.35	0.22	3.51	89.6	14.8	16	3.70
G0669723		0.62	0.48	0.92	52.7	<0.2	<10	210	0.71	0.35	0.32	2.26	49.4	9.1	12	2.99
G0669724		0.84	1.89	0.92	209	<0.2	<10	110	0.64	0.61	0.19	3.58	63.0	11.2	15	1.80
G0669725		0.76	1.04	0.88	233	<0.2	<10	120	0.82	0.65	0.24	4.53	87.0	19.3	13	3.61
G0669726		0.76	0.14	0.81	30.5	<0.2	<10	100	0.40	0.37	0.09	0.73	81.0	8.9	15	3.39
G0669727		0.82	0.28	1.13	19.1	<0.2	<10	160	0.62	0.40	0.08	1.51	89.3	8.9	17	3.44
G0669728		0.50	0.17	0.95	6.3	<0.2	<10	130	0.43	0.23	0.09	0.53	33.2	4.1	12	2.29
G0669729		0.78	0.08	1.00	14.8	<0.2	<10	170	0.63	0.32	0.16	1.33	70.8	8.2	16	2.57
G0669730		0.78	0.14	0.84	16.2	<0.2	<10	100	0.63	0.30	0.17	3.99	57.3	9.8	14	3.18
G0669731		0.84	0.09	1.10	12.8	<0.2	<10	110	0.68	0.26	0.23	6.97	47.7	10.4	22	2.74
G0669732		0.60	0.32	1.11	12.4	<0.2	<10	200	0.95	0.30	0.47	30.6	43.6	6.5	16	2.07
G0669733		0.46	0.04	1.28	17.5	<0.2	<10	130	0.46	0.42	0.05	0.70	73.1	7.5	14	2.69
G0669734		0.86	0.20	1.28	17.6	<0.2	<10	220	1.21	0.48	0.66	1.08	93.4	18.5	20	7.55
G0669735		0.62	0.60	1.05	13.7	<0.2	<10	210	1.20	0.27	0.70	2.57	40.1	10.8	13	8.50
G0669736		0.42	0.33	1.00	7.6	<0.2	<10	140	0.79	0.25	0.72	0.55	74.7	9.4	11	1.80
G0669737		0.62	0.09	1.28	9.3	<0.2	<10	170	0.98	0.43	0.10	0.24	112.0	12.0	16	4.09
G0669738		0.62	0.09	1.06	11.1	<0.2	<10	160	0.63	0.29	0.17	0.47	83.2	9.2	17	2.76
G0669739		0.80	0.21	0.85	11.8	<0.2	<10	130	0.79	0.29	0.19	2.18	74.0	10.9	15	2.48
G0669740		0.74	0.17	0.92	12.3	<0.2	<10	120	0.74	0.28	0.16	2.66	68.6	9.8	16	2.81

***** See Appendix Page for comments regarding this certificate *****



ALS Chemex

EXCELLENCE IN ANALYTICAL CHEMISTRY

ALS Canada Ltd.

2103 Dollarton Hwy

North Vancouver BC V7H 0A7

Phone: 604 984 0221 Fax: 604 984 0218 www.alschemex.com

To: OVERLAND RESOURCES LTD.
604 - 700 WEST PENDER STREET
VANCOUVER BC V6C 1G8

Page: 2 - B
Total # Pages: 4 (A - D)
Plus Appendix Pages
Finalized Date: 17-JUL-2010
Account: OVERRE

Project: YBMP

CERTIFICATE OF ANALYSIS WH10089475

Sample Description	ME-MS41	ME-MS41	ME-MS41	ME-MS41	ME-MS41	ME-MS41	ME-MS41	ME-MS41	ME-MS41	ME-MS41	ME-MS41	ME-MS41	ME-MS41	ME-MS41	ME-MS41
	Cu ppm	Fe %	Ga ppm	Ge ppm	Hf ppm	Hg ppm	In ppm	K %	La ppm	Li ppm	Mg %	Mn ppm	Mo ppm	Na %	Nb ppm
G0669701	54.9	3.85	5.76	0.08	0.02	0.01	0.035	0.12	22.4	20.0	0.29	371	5.76	0.01	1.21
G0669702	34.4	3.45	6.87	0.07	0.05	0.02	0.040	0.11	16.5	19.9	0.29	316	2.97	<0.01	2.08
G0669703	43.1	3.57	6.35	0.07	0.03	0.02	0.040	0.09	16.6	23.9	0.31	453	3.17	<0.01	1.90
G0669704	51.7	4.04	6.34	0.08	0.04	0.03	0.049	0.09	17.2	31.1	0.33	305	3.46	<0.01	2.03
G0669705	40.7	3.39	6.15	0.07	0.02	0.02	0.048	0.11	16.3	27.5	0.29	1300	2.73	<0.01	1.61
G0669706	55.9	4.34	7.12	0.08	0.03	0.03	0.069	0.11	16.9	42.1	0.31	1560	3.00	0.01	2.03
G0669707	41.6	2.77	5.55	0.07	0.03	0.02	0.029	0.16	17.5	28.5	0.36	667	2.17	<0.01	2.15
G0669708	49.0	4.04	7.17	0.07	0.04	0.02	0.041	0.19	18.4	30.2	0.51	826	4.72	<0.01	2.83
G0669709	18.7	2.62	6.86	0.05	0.02	0.01	0.028	0.11	17.0	11.5	0.21	2680	1.59	<0.01	1.78
G0669710	29.6	2.17	5.09	0.05	<0.02	0.02	0.027	0.13	14.3	20.3	0.29	639	1.78	0.01	1.16
G0669711	23.2	3.32	6.42	0.06	0.03	0.02	0.042	0.19	18.6	40.8	0.43	716	1.80	<0.01	2.02
G0669712	26.9	3.59	7.19	0.06	0.03	0.01	0.045	0.15	18.6	34.4	0.41	414	2.72	0.01	2.36
G0669713	41.0	3.85	6.94	0.07	0.05	0.03	0.066	0.27	23.2	43.8	0.54	707	1.82	0.02	2.38
G0669714	17.9	3.21	5.76	0.05	0.02	0.02	0.032	0.08	24.0	11.2	0.18	693	1.88	<0.01	1.47
G0669715	47.9	2.75	3.34	0.07	0.07	0.08	0.040	0.11	28.9	16.7	0.21	1100	0.76	0.01	0.50
G0669716	19.2	2.51	4.17	0.05	0.03	0.01	0.026	0.09	40.7	16.3	0.22	424	0.79	<0.01	0.91
G0669717	23.6	1.16	2.94	<0.05	<0.02	0.01	0.016	0.06	11.4	4.9	0.09	452	0.52	0.02	0.35
G0669718	26.3	3.42	3.89	0.09	0.04	0.03	0.040	0.12	52.6	18.0	0.29	530	0.62	<0.01	0.33
G0669719	25.2	3.24	3.67	0.07	0.05	0.04	0.041	0.11	45.8	17.2	0.29	498	0.74	<0.01	0.38
G0669720	32.3	3.08	3.61	0.07	0.08	0.18	0.052	0.10	36.6	16.1	0.30	959	1.09	<0.01	0.49
G0669721	21.8	3.22	3.19	0.07	0.08	0.13	0.072	0.14	50.4	15.7	0.29	469	0.85	<0.01	0.34
G0669722	36.2	3.27	3.68	0.14	0.06	0.05	0.045	0.11	44.5	18.5	0.29	1020	0.96	0.02	0.43
G0669723	23.2	2.88	3.02	0.09	0.06	0.05	0.053	0.07	23.0	12.3	0.20	849	0.90	0.04	0.55
G0669724	22.6	3.83	3.37	0.12	0.04	0.06	0.489	0.08	31.1	18.1	0.27	651	1.30	0.03	0.50
G0669725	71.0	7.80	3.38	0.19	0.04	0.04	0.366	0.10	41.9	13.4	0.24	1020	2.37	0.03	0.39
G0669726	24.1	3.21	4.42	0.10	<0.02	0.01	0.129	0.09	40.1	11.5	0.15	588	1.07	0.03	0.63
G0669727	28.8	3.81	4.77	0.13	0.02	0.02	0.152	0.08	44.2	15.2	0.15	700	1.04	0.03	0.53
G0669728	12.7	1.46	4.50	0.05	<0.02	0.02	0.021	0.06	16.2	9.8	0.13	277	0.79	0.03	0.79
G0669729	20.9	2.73	4.16	0.10	0.02	0.02	0.044	0.09	35.1	21.5	0.26	449	0.83	0.02	0.47
G0669730	30.8	2.71	3.30	0.10	0.04	0.13	0.034	0.08	28.2	17.5	0.26	525	0.82	0.03	0.49
G0669731	24.5	2.57	3.98	0.06	0.03	0.16	0.043	0.07	24.6	14.5	0.41	445	1.21	<0.01	1.00
G0669732	60.6	2.26	3.95	0.05	0.03	0.53	0.078	0.10	24.8	9.8	0.22	678	3.04	<0.01	0.65
G0669733	17.5	2.88	5.70	0.06	0.03	0.04	0.038	0.11	37.6	11.5	0.09	344	2.02	<0.01	1.40
G0669734	38.8	3.45	4.81	0.08	0.08	0.15	0.085	0.14	46.5	22.2	0.25	442	1.44	0.01	0.64
G0669735	68.4	2.16	3.36	0.06	0.05	0.08	0.033	0.09	20.1	17.0	0.18	1040	0.87	0.02	0.56
G0669736	18.1	3.00	3.54	0.06	0.04	0.02	0.032	0.09	33.5	9.8	0.14	828	0.65	0.01	0.49
G0669737	16.3	3.64	3.82	0.09	0.03	0.01	0.063	0.12	56.6	19.4	0.19	777	0.53	<0.01	0.33
G0669738	19.2	2.81	3.75	0.07	0.04	0.01	0.027	0.10	42.4	22.0	0.31	415	0.59	<0.01	0.44
G0669739	28.1	2.78	2.90	0.06	0.06	0.06	0.029	0.09	36.3	16.3	0.27	554	0.83	<0.01	0.46
G0669740	23.6	2.71	3.14	0.07	0.04	0.06	0.043	0.09	33.3	17.1	0.29	411	1.15	<0.01	0.44

***** See Appendix Page for comments regarding this certificate *****



ALS Chemex

EXCELLENCE IN ANALYTICAL CHEMISTRY

ALS Canada Ltd.

2103 Dollarton Hwy
North Vancouver BC V7H 0A7

Phone: 604 984 0221 Fax: 604 984 0218 www.alschemex.com

To: OVERLAND RESOURCES LTD.
604 - 700 WEST PENDER STREET
VANCOUVER BC V6C 1G8

Page: 2 - C
Total # Pages: 4 (A - D)
Plus Appendix Pages
Finalized Date: 17-JUL-2010
Account: OVERRE

Project: YBMP

CERTIFICATE OF ANALYSIS WH10089475

Sample Description	ME-MS41	ME-MS41	ME-MS41	ME-MS41	ME-MS41	ME-MS41	ME-MS41	ME-MS41	ME-MS41	ME-MS41	ME-MS41	ME-MS41	ME-MS41	ME-MS41	ME-MS41
	Ni ppm	P ppm	Pb ppm	Rb ppm	Re ppm	S %	Sb ppm	Sc ppm	Se ppm	Sn ppm	Sr ppm	Ta ppm	Te ppm	Th ppm	Ti %
	0.2	10	0.2	0.1	0.001	0.01	0.05	0.1	0.2	0.2	0.2	0.01	0.01	0.2	0.005
G0669701	33.7	930	19.9	35.8	0.001	0.13	10.65	2.3	1.8	0.6	40.9	<0.01	0.09	3.3	0.048
G0669702	23.4	660	17.1	21.9	<0.001	0.04	5.45	2.8	0.9	0.8	21.2	<0.01	0.07	4.3	0.058
G0669703	34.4	560	16.8	19.7	0.001	0.04	6.16	2.9	1.3	0.8	23.3	0.01	0.07	4.0	0.044
G0669704	35.6	620	16.9	19.6	<0.001	0.07	7.98	3.0	1.7	0.8	26.8	<0.01	0.10	3.9	0.048
G0669705	28.9	540	17.4	32.4	0.001	0.07	6.58	2.6	0.9	0.8	31.0	<0.01	0.07	1.8	0.048
G0669706	51.0	550	19.9	28.0	0.001	0.12	8.54	3.4	1.4	0.8	43.6	0.01	0.10	3.3	0.055
G0669707	41.2	560	20.2	27.3	<0.001	0.04	5.59	2.1	1.4	0.5	45.4	<0.01	0.05	1.5	0.057
G0669708	49.0	1000	23.1	30.2	0.001	0.08	6.64	3.4	1.3	0.7	29.9	<0.01	0.09	3.1	0.084
G0669709	12.7	1070	16.3	31.6	<0.001	0.01	1.21	2.1	0.4	0.8	13.1	<0.01	0.03	1.6	0.061
G0669710	18.6	580	17.0	21.6	<0.001	0.01	2.18	2.0	0.5	0.6	21.6	<0.01	0.04	0.8	0.042
G0669711	25.5	820	26.3	32.8	<0.001	0.02	4.63	3.0	0.6	0.8	24.2	<0.01	0.06	4.3	0.055
G0669712	28.2	610	26.6	24.3	<0.001	0.04	4.96	3.4	0.7	1.0	20.8	<0.01	0.06	3.9	0.059
G0669713	36.7	630	59.4	38.4	0.001	0.12	21.3	4.1	0.9	1.0	49.7	0.01	0.07	5.3	0.072
G0669714	14.1	390	32.9	17.8	<0.001	0.01	1.19	2.3	0.4	0.7	15.4	<0.01	0.03	3.1	0.030
G0669715	25.7	790	368	19.1	<0.001	0.06	1.70	3.0	1.0	0.7	61.6	0.01	0.03	1.7	0.014
G0669716	16.2	200	121.5	13.2	<0.001	0.01	1.05	2.4	0.2	0.6	15.9	<0.01	0.02	5.9	0.018
G0669717	7.7	290	35.9	9.9	<0.001	0.02	0.45	0.9	0.2	0.4	31.0	<0.01	0.01	0.2	0.017
G0669718	24.0	330	40.0	12.7	<0.001	0.01	1.35	3.8	0.4	0.4	16.7	<0.01	0.02	9.3	0.007
G0669719	22.7	320	38.8	12.8	<0.001	0.01	1.24	3.5	0.4	0.5	17.7	<0.01	0.03	7.2	0.009
G0669720	28.7	480	145.5	12.0	0.001	0.02	1.94	4.0	0.8	0.5	26.2	<0.01	0.03	5.1	0.011
G0669721	21.4	500	198.0	13.9	0.001	0.02	4.35	4.1	0.7	0.6	22.2	<0.01	0.03	6.9	0.009
G0669722	32.3	220	46.8	14.9	<0.001	0.03	1.99	4.3	0.9	0.4	16.7	<0.01	0.03	7.6	0.010
G0669723	20.4	410	323	10.8	<0.001	0.04	3.75	3.0	0.8	0.6	26.4	<0.01	0.03	4.1	0.011
G0669724	25.5	460	2190	11.3	0.001	0.03	440	2.8	0.9	4.4	19.3	<0.01	0.18	6.2	0.010
G0669725	26.8	530	1795	12.2	<0.001	0.08	10.35	2.8	1.3	6.8	27.5	<0.01	0.06	9.2	0.005
G0669726	15.8	280	179.5	18.1	<0.001	0.03	3.23	1.7	0.5	3.0	12.7	<0.01	0.04	4.9	0.011
G0669727	22.3	350	334	18.3	<0.001	0.03	2.50	2.9	0.5	2.1	14.3	<0.01	0.03	7.0	0.006
G0669728	8.1	240	101.0	14.3	<0.001	0.03	0.55	1.1	0.2	0.7	11.4	<0.01	0.02	0.7	0.018
G0669729	18.4	280	106.5	14.1	<0.001	0.03	0.93	2.2	0.3	0.6	19.4	<0.01	0.03	5.2	0.008
G0669730	22.6	360	89.9	12.3	<0.001	0.03	1.17	2.6	0.6	0.4	17.2	<0.01	0.04	5.2	0.010
G0669731	28.2	500	33.5	11.3	0.001	0.02	0.93	2.9	0.6	0.5	21.4	<0.01	0.03	3.8	0.032
G0669732	20.4	620	24.3	18.9	<0.001	0.05	0.67	2.7	1.0	0.5	43.8	<0.01	0.04	1.2	0.012
G0669733	10.7	220	21.2	18.9	<0.001	0.02	0.63	2.1	0.4	0.8	12.9	<0.01	0.05	5.5	0.015
G0669734	25.5	550	38.9	22.9	0.001	0.05	0.83	3.8	0.8	0.7	53.5	0.01	0.04	4.9	0.011
G0669735	25.0	640	53.0	12.8	<0.001	0.05	1.13	2.9	0.8	0.4	57.8	0.01	0.03	1.0	0.025
G0669736	18.2	400	26.9	12.7	<0.001	0.03	0.87	3.7	0.4	0.4	42.5	0.01	0.03	4.0	0.008
G0669737	27.0	260	34.2	20.0	<0.001	0.01	0.61	3.2	0.3	0.4	13.9	<0.01	0.03	8.5	<0.005
G0669738	21.5	230	45.0	12.9	<0.001	0.01	0.70	2.8	0.3	0.4	16.5	<0.01	0.03	6.3	0.011
G0669739	24.0	200	47.5	10.1	0.001	0.01	1.14	3.5	0.5	0.4	16.3	<0.01	0.03	6.9	0.012
G0669740	25.8	280	47.0	10.4	0.001	0.01	1.28	3.4	0.5	0.4	15.5	<0.01	0.03	6.1	0.011



ALS Chemex

EXCELLENCE IN ANALYTICAL CHEMISTRY

ALS Canada Ltd.

2103 Dollarton Hwy
North Vancouver BC V7H 0A7

Phone: 604 984 0221 Fax: 604 984 0218 www.alschemex.com

To: OVERLAND RESOURCES LTD.
604 - 700 WEST PENDER STREET
VANCOUVER BC V6C 1G8

Page: 2 - D
Total # Pages: 4 (A - D)
Plus Appendix Pages
Finalized Date: 17-JUL-2010
Account: OVERRE

Project: YBMP

CERTIFICATE OF ANALYSIS WH10089475

Sample Description	Method Analyte Units LOR	ME-MS41	ME-MS41	ME-MS41	ME-MS41	ME-MS41	ME-MS41	ME-MS41
		Tl	U	V	W	Y	Zn	Zr
		ppm	ppm	ppm	ppm	ppm	ppm	ppm
		0.02	0.05	1	0.05	0.05	2	0.5
G0669701		0.19	1.01	62	0.12	4.81	164	0.8
G0669702		0.16	0.81	68	0.21	3.60	126	2.2
G0669703		0.15	0.88	60	0.22	4.06	171	1.4
G0669704		0.16	0.95	62	0.28	5.44	114	1.6
G0669705		0.13	0.84	61	0.19	5.62	168	0.5
G0669706		0.16	0.90	69	0.19	7.81	174	1.3
G0669707		0.17	1.07	45	0.24	5.45	151	0.9
G0669708		0.19	1.22	88	0.27	5.45	234	1.2
G0669709		0.12	0.63	47	0.13	3.16	180	0.7
G0669710		0.14	0.86	40	0.15	3.78	111	<0.5
G0669711		0.18	0.72	52	0.14	3.84	302	0.9
G0669712		0.19	0.85	60	0.26	4.18	180	1.3
G0669713		0.30	1.73	47	0.16	7.25	163	2.1
G0669714		0.11	0.63	49	0.21	3.12	110	<0.5
G0669715		0.11	1.85	23	0.07	18.75	372	1.7
G0669716		0.11	0.62	30	0.08	4.12	246	0.9
G0669717		0.06	0.43	23	<0.05	3.38	87	<0.5
G0669718		0.13	0.86	16	<0.05	9.35	293	1.2
G0669719		0.11	0.77	18	<0.05	8.31	304	1.1
G0669720		0.11	1.21	19	<0.05	10.60	1820	1.9
G0669721		0.12	1.30	16	<0.05	11.35	1480	2.0
G0669722		0.13	1.26	17	0.07	13.95	355	2.0
G0669723		0.11	0.77	18	0.08	9.34	325	1.6
G0669724		0.10	0.72	23	0.12	5.91	868	1.2
G0669725		0.24	1.74	16	0.06	6.73	1360	1.7
G0669726		0.13	0.52	25	0.08	3.41	394	<0.5
G0669727		0.18	0.63	29	0.09	5.59	432	0.5
G0669728		0.11	0.45	36	0.21	3.03	101	<0.5
G0669729		0.11	0.56	21	0.14	3.93	443	0.6
G0669730		0.09	0.70	19	0.08	6.75	1740	1.2
G0669731		0.09	0.99	34	0.10	7.07	3510	0.5
G0669732		0.09	1.22	35	0.10	9.08	5970	0.5
G0669733		0.14	0.57	43	0.09	2.57	273	1.2
G0669734		0.13	2.92	24	<0.05	17.35	729	2.1
G0669735		0.08	2.09	28	0.11	21.5	448	1.0
G0669736		0.09	0.76	22	<0.05	11.35	81	1.2
G0669737		0.16	0.62	15	<0.05	6.01	117	1.1
G0669738		0.11	0.68	19	<0.05	5.41	187	1.1
G0669739		0.08	0.81	17	<0.05	8.14	1210	1.7
G0669740		0.09	0.89	20	<0.05	7.23	1220	1.3

***** See Appendix Page for comments regarding this certificate *****



ALS Chemex

EXCELLENCE IN ANALYTICAL CHEMISTRY

ALS Canada Ltd.

2103 Dollarton Hwy
North Vancouver BC V7H 0A7

Phone: 604 984 0221 Fax: 604 984 0218 www.alschemex.com

To: OVERLAND RESOURCES LTD.
604 - 700 WEST PENDER STREET
VANCOUVER BC V6C 1G8

Page: 3 - A
Total # Pages: 4 (A - D)
Plus Appendix Pages
Finalized Date: 17-JUL-2010
Account: OVERRE

Project: YBMP

CERTIFICATE OF ANALYSIS WH10089475

Sample Description	Method Analyte Units LOR	WEI-21	ME-MS41	ME-MS41	ME-MS41	ME-MS41	ME-MS41	ME-MS41	ME-MS41	ME-MS41	ME-MS41	ME-MS41	ME-MS41	ME-MS41	ME-MS41	ME-MS41
		Recvd Wt. kg 0.02	Ag ppm 0.01	Al % 0.01	As ppm 0.1	Au ppm 0.2	B ppm 10	Ba ppm 10	Be ppm 0.05	Bi ppm 0.01	Ca % 0.01	Cd ppm 0.01	Ce ppm 0.02	Co ppm 0.1	Cr ppm 1	Cs ppm 0.05
G0669741		0.96	0.56	1.12	15.8	<0.2	<10	230	1.04	0.37	0.42	2.45	62.2	11.3	16	5.19
G0669742		0.74	0.49	1.29	18.9	<0.2	<10	250	1.08	0.36	0.47	5.50	63.9	11.7	20	5.12
G0669743		0.74	0.39	1.28	20.2	<0.2	<10	210	1.10	0.46	0.30	9.77	81.0	13.8	21	5.35
G0669744		0.56	0.20	1.24	27.4	<0.2	<10	200	0.76	0.42	0.20	4.03	62.7	14.4	21	4.95
G0669745		0.54	0.16	1.05	15.2	<0.2	<10	170	0.47	0.29	0.17	0.87	60.6	8.7	16	2.18
G0669746		0.64	0.36	0.98	17.0	<0.2	<10	200	0.65	0.34	0.11	1.40	59.8	8.3	14	3.10
G0669747		0.80	0.08	1.08	42.6	<0.2	<10	80	0.42	0.32	0.05	0.52	69.2	11.1	17	2.89
G0669748		0.62	0.05	0.85	13.9	<0.2	<10	90	0.40	0.30	0.09	0.47	69.8	10.2	15	1.40
G0669749		0.70	0.23	1.67	25.7	<0.2	<10	130	1.51	1.62	0.17	13.90	91.2	35.2	13	5.80
G0669750		0.58	0.09	1.66	15.4	<0.2	<10	190	0.98	0.56	0.19	7.55	94.8	32.2	20	4.84
G0675851		1.02	0.51	1.08	25.3	<0.2	<10	150	1.52	0.72	0.19	4.65	106.5	28.2	12	8.45
G0675852		0.40	0.16	1.30	17.7	<0.2	<10	160	0.76	0.42	0.35	2.59	63.9	16.3	25	3.85
G0675853		0.66	4.21	2.35	28.5	<0.2	<10	100	0.73	8.85	0.33	25.8	40.3	41.3	47	1.76
G0668577		0.66	0.72	1.43	37.1	<0.2	<10	1160	1.08	0.35	0.07	2.49	35.7	21.3	29	2.47
G0668578		0.48	0.54	2.05	31.3	<0.2	<10	410	0.61	0.36	0.04	0.43	28.6	8.5	28	2.39
G0668579		0.42	0.16	1.39	22.4	<0.2	<10	170	0.43	0.33	0.03	0.38	23.2	9.8	19	2.28
G0668580		0.46	0.39	2.09	32.6	<0.2	<10	220	0.53	0.48	0.03	0.40	29.2	9.7	31	3.29
G0668581		0.52	0.27	0.87	24.5	<0.2	<10	260	0.35	0.33	0.02	0.40	27.4	5.4	13	2.41
G0668582		0.42	0.21	0.96	17.2	<0.2	<10	170	0.29	0.32	0.03	0.44	22.7	5.1	20	2.71
G0668583		0.44	0.63	1.48	24.1	<0.2	<10	240	0.44	0.41	0.04	0.56	27.1	7.6	23	2.97
G0668584		0.44	0.45	1.76	31.7	<0.2	<10	250	0.62	0.34	0.03	0.44	26.2	8.0	35	3.37
G0668585		0.48	0.52	1.06	21.9	<0.2	<10	160	0.39	0.33	0.04	0.42	25.0	4.8	21	2.87
G0668586		0.42	0.35	0.55	9.3	<0.2	<10	80	0.16	0.17	0.02	0.24	13.80	1.9	8	1.74
G0668587		0.36	0.49	0.41	5.1	<0.2	<10	60	0.12	0.08	0.03	0.13	7.41	1.3	5	0.68
G0668588		0.38	0.54	0.47	4.9	<0.2	<10	70	0.11	0.12	0.02	0.25	9.33	1.5	7	1.39
G0668589		0.50	0.47	1.01	24.0	<0.2	<10	210	0.38	0.33	0.03	0.40	25.1	4.8	22	2.74
G0668590		0.52	0.60	1.24	21.6	<0.2	<10	210	0.45	0.33	0.03	0.40	25.0	5.3	25	3.12
G0668591		0.40	1.20	0.90	17.9	<0.2	<10	80	0.28	0.18	0.03	0.37	39.3	2.1	18	4.63
G0668592		0.52	0.26	1.89	40.3	<0.2	<10	400	0.77	0.46	0.04	0.60	38.0	10.8	31	3.79
G0668593		0.62	0.78	1.23	28.2	<0.2	<10	270	0.59	0.29	0.05	1.14	26.6	13.5	23	2.78
G0668594		0.28	0.20	0.66	9.5	<0.2	<10	220	0.28	0.16	0.07	0.41	13.30	4.3	9	1.70
G0668595		0.44	0.53	2.15	125.5	<0.2	<10	470	1.42	0.64	0.06	2.22	48.4	29.0	32	5.24
G0668596		0.40	0.63	3.12	44.1	<0.2	<10	810	1.45	0.39	0.10	0.96	46.0	11.8	133	11.50
G0668597		0.54	0.49	1.73	47.7	<0.2	<10	540	0.95	0.59	0.11	1.29	30.8	26.2	32	4.14
G0668598		0.44	0.37	1.31	21.3	<0.2	<10	370	0.60	0.43	0.12	1.19	33.1	36.2	21	3.21
G0668599		0.46	0.40	0.95	19.1	<0.2	<10	660	0.40	0.29	0.05	1.86	23.5	17.1	16	1.91
G0668600		0.66	0.25	1.47	40.0	<0.2	<10	460	0.49	0.59	0.04	0.62	30.2	6.4	26	2.96
G0669590		0.48	0.57	2.28	353	<0.2	<10	700	0.84	0.60	0.45	0.79	41.0	17.3	39	4.28
G0669591		0.12	0.82	1.88	69.0	<0.2	<10	680	0.61	0.39	0.39	0.41	29.0	7.7	26	3.47
G0669592		0.40	0.17	2.01	27.9	<0.2	<10	350	0.68	0.36	0.07	0.36	29.7	13.8	22	2.69

**** See Appendix Page for comments regarding this certificate ****



ALS Chemex

EXCELLENCE IN ANALYTICAL CHEMISTRY

ALS Canada Ltd.

2103 Dollarton Hwy
North Vancouver BC V7H 0A7

Phone: 604 984 0221 Fax: 604 984 0218 www.alschemex.com

To: OVERLAND RESOURCES LTD.
604 - 700 WEST PENDER STREET
VANCOUVER BC V6C 1G8

Page: 3 - B
Total # Pages: 4 (A - D)
Plus Appendix Pages
Finalized Date: 17-JUL-2010
Account: OVERRE

Project: YBMP

CERTIFICATE OF ANALYSIS WH10089475

Sample Description	ME-MS41	ME-MS41	ME-MS41	ME-MS41	ME-MS41	ME-MS41	ME-MS41	ME-MS41	ME-MS41	ME-MS41	ME-MS41	ME-MS41	ME-MS41	ME-MS41	ME-MS41	ME-MS41
	Cu ppm	Fe %	Ga ppm	Ge ppm	Hf ppm	Hg ppm	In ppm	K %	La ppm	Li ppm	Mg %	Mn ppm	Mo ppm	Na %	Nb ppm	Units LOR
G0669741	43.0	3.30	3.50	0.08	0.09	0.10	0.051	0.12	31.0	17.6	0.30	936	0.91	<0.01	0.41	
G0669742	50.1	3.10	3.93	0.07	0.07	0.07	0.048	0.15	32.3	18.0	0.35	731	1.05	<0.01	0.57	
G0669743	42.1	3.51	4.27	0.08	0.06	0.07	0.054	0.15	38.5	21.4	0.36	978	1.17	<0.01	0.64	
G0669744	35.7	3.57	5.22	0.07	0.02	0.03	0.054	0.12	29.3	16.1	0.27	1590	1.20	<0.01	0.69	
G0669745	17.5	2.47	4.56	0.06	<0.02	0.02	0.027	0.09	30.0	12.1	0.21	562	0.96	<0.01	0.74	
G0669746	23.6	2.60	4.15	0.06	<0.02	0.02	0.040	0.10	30.4	10.4	0.16	738	0.95	<0.01	0.67	
G0669747	28.6	3.15	4.48	0.07	0.02	0.01	0.031	0.09	35.3	14.4	0.22	495	1.81	<0.01	0.68	
G0669748	26.3	2.81	3.35	<0.05	<0.02	0.01	0.022	0.08	35.9	14.4	0.20	476	0.83	<0.01	0.47	
G0669749	31.7	7.64	5.52	0.13	0.06	0.17	0.083	0.12	44.8	29.1	0.58	1520	1.14	<0.01	0.46	
G0669750	22.8	4.30	5.64	0.08	0.05	0.05	0.042	0.11	43.4	24.7	0.47	2280	2.53	<0.01	0.44	
G0675851	71.3	4.66	3.27	0.09	0.09	0.11	0.049	0.12	58.0	19.7	0.33	1080	1.96	<0.01	0.24	
G0675852	29.5	3.31	4.64	0.06	0.04	0.03	0.085	0.10	31.8	22.3	0.34	1370	1.21	<0.01	0.62	
G0675853	14.1	6.42	16.50	0.10	0.13	0.36	1.750	0.03	14.3	41.5	0.97	9040	1.46	<0.01	0.24	
G0668577	89.6	3.88	4.39	0.07	0.03	0.04	0.057	0.16	18.2	26.6	0.38	1100	5.69	<0.01	1.20	
G0668578	51.4	3.83	5.72	0.05	0.06	0.06	0.044	0.10	15.7	24.9	0.34	279	4.13	<0.01	1.93	
G0668579	35.7	2.82	6.24	<0.05	0.02	0.03	0.026	0.07	12.3	13.5	0.20	375	2.26	<0.01	1.94	
G0668580	50.3	4.41	8.03	<0.05	0.04	0.04	0.051	0.10	15.7	26.2	0.39	456	3.92	<0.01	3.00	
G0668581	52.4	3.33	5.64	<0.05	<0.02	0.02	0.033	0.07	14.4	6.4	0.08	188	4.95	<0.01	1.06	
G0668582	42.5	2.63	5.43	<0.05	0.02	0.02	0.026	0.07	12.2	14.0	0.21	189	2.99	<0.01	1.48	
G0668583	49.8	3.34	6.50	<0.05	<0.02	0.04	0.042	0.09	14.5	17.3	0.27	316	3.32	<0.01	1.85	
G0668584	68.7	4.54	7.06	0.06	0.03	0.03	0.048	0.13	14.0	26.0	0.47	402	4.57	<0.01	2.49	
G0668585	53.0	3.25	6.36	<0.05	0.02	0.02	0.030	0.10	13.2	9.5	0.19	236	3.18	<0.01	2.41	
G0668586	23.8	1.41	3.32	<0.05	<0.02	0.01	0.011	0.04	7.2	3.3	0.07	62	1.67	0.01	0.91	
G0668587	14.0	0.75	2.04	<0.05	<0.02	0.01	0.007	0.04	3.6	2.2	0.05	54	0.83	0.01	0.64	
G0668588	17.1	0.90	2.89	<0.05	<0.02	0.02	0.007	0.03	5.0	3.3	0.06	49	1.05	0.01	0.63	
G0668589	47.4	3.17	6.06	0.05	0.03	0.02	0.028	0.09	13.3	12.7	0.21	187	3.83	0.01	2.35	
G0668590	54.6	2.99	5.95	0.05	0.03	0.03	0.031	0.09	13.4	18.6	0.27	193	3.56	0.01	2.38	
G0668591	165.5	3.53	4.41	0.07	0.04	0.08	0.037	0.06	17.0	5.3	0.09	93	4.12	0.01	1.64	
G0668592	76.0	4.23	7.00	0.07	0.03	0.02	0.038	0.22	19.4	29.2	0.55	548	7.39	0.01	2.72	
G0668593	60.0	2.75	4.83	<0.05	<0.02	0.02	0.025	0.15	14.2	21.8	0.32	502	4.73	0.01	1.70	
G0668594	25.2	1.39	3.09	<0.05	<0.02	0.02	0.013	0.05	6.8	6.7	0.11	133	1.49	0.01	0.81	
G0668595	155.5	7.10	7.57	0.10	0.05	0.03	0.059	0.26	23.9	27.3	0.56	1360	17.65	<0.01	1.78	
G0668596	104.5	4.80	11.65	0.11	0.06	0.02	0.060	0.49	24.2	66.9	1.32	562	5.03	0.03	3.69	
G0668597	136.0	4.37	6.07	0.07	0.04	0.02	0.051	0.15	18.2	35.7	0.46	1140	12.85	0.01	1.82	
G0668598	62.4	2.95	6.08	0.06	0.03	0.03	0.037	0.15	19.0	19.6	0.32	1440	4.32	0.01	1.95	
G0668599	37.1	2.46	5.14	<0.05	<0.02	0.01	0.023	0.07	11.5	13.2	0.19	664	2.94	0.01	1.29	
G0668600	36.2	3.71	6.67	0.05	0.02	0.01	0.038	0.12	16.1	24.3	0.38	276	4.56	<0.01	1.95	
G0669590	184.0	3.98	6.22	0.06	0.06	0.06	0.048	0.30	21.8	29.4	0.64	556	2.63	0.01	1.56	
G0669591	75.3	2.63	5.54	<0.05	0.02	0.05	0.037	0.19	14.8	19.2	0.36	200	2.73	0.01	1.48	
G0669592	56.0	2.63	4.88	<0.05	0.03	0.04	0.036	0.10	15.5	22.3	0.38	405	2.89	<0.01	1.84	

***** See Appendix Page for comments regarding this certificate *****



ALS Chemex

EXCELLENCE IN ANALYTICAL CHEMISTRY

ALS Canada Ltd.

2103 Dollarton Hwy
North Vancouver BC V7H 0A7

Phone: 604 984 0221 Fax: 604 984 0218 www.alschemex.com

To: OVERLAND RESOURCES LTD.
604 - 700 WEST PENDER STREET
VANCOUVER BC V6C 1G8

Page: 3 - C
Total # Pages: 4 (A - D)
Plus Appendix Pages
Finalized Date: 17-JUL-2010
Account: OVERRE

Project: YBMP

CERTIFICATE OF ANALYSIS WH10089475

Sample Description	Method	ME-MS41	ME-MS41	ME-MS41	ME-MS41	ME-MS41	ME-MS41	ME-MS41	ME-MS41	ME-MS41	ME-MS41	ME-MS41	ME-MS41	ME-MS41	ME-MS41	ME-MS41
	Analyte Units LOR	Ni ppm 0.2	P ppm 10	Pb ppm 0.2	Rb ppm 0.1	Re ppm 0.001	S % 0.01	Sb ppm 0.05	Sc ppm 0.1	Se ppm 0.2	Sn ppm 0.2	Sr ppm 0.2	Ta ppm 0.01	Te ppm 0.01	Th ppm 0.2	Ti % 0.005
G0669741		26.2	550	63.0	13.2	0.001	0.03	1.90	4.8	1.0	0.4	34.0	<0.01	0.03	4.5	0.009
G0669742		27.3	560	62.2	16.3	0.001	0.03	2.72	4.4	0.8	0.6	43.9	0.01	0.04	3.7	0.012
G0669743		30.0	630	66.3	16.0	0.001	0.02	1.89	4.5	0.7	0.7	31.3	<0.01	0.08	5.3	0.016
G0669744		19.8	550	137.0	17.7	<0.001	0.02	1.49	2.6	0.4	0.8	25.8	<0.01	0.04	2.5	0.017
G0669745		13.3	230	79.3	15.9	<0.001	0.01	0.66	2.1	0.2	0.6	16.9	<0.01	0.02	3.3	0.014
G0669746		12.7	380	155.5	15.6	<0.001	0.01	1.24	2.1	0.2	0.9	15.2	<0.01	0.03	3.2	0.013
G0669747		20.0	340	52.7	17.2	0.001	0.01	1.12	2.4	0.4	0.6	9.5	<0.01	0.05	4.6	0.012
G0669748		16.9	230	40.4	11.8	<0.001	<0.01	0.75	2.2	0.3	0.4	11.1	<0.01	0.03	5.5	0.007
G0669749		49.8	990	507	13.6	<0.001	0.14	2.24	4.4	0.7	0.5	20.1	0.01	0.18	8.0	0.009
G0669750		40.0	440	54.6	14.7	<0.001	0.01	0.84	3.5	0.5	0.5	21.0	<0.01	0.05	7.0	0.009
G0675851		39.2	370	85.5	11.5	0.001	0.02	1.72	4.7	1.0	0.4	25.9	0.01	0.11	11.3	<0.005
G0675852		22.0	490	267	16.4	<0.001	0.02	1.17	4.9	0.4	0.7	26.7	<0.01	0.06	4.5	0.013
G0675853		35.1	880	8170	4.8	<0.001	0.02	5.50	10.9	3.9	2.6	31.7	<0.01	0.76	5.0	0.011
G0668577		57.8	890	64.2	18.8	<0.001	0.15	10.35	3.0	2.0	0.4	35.7	<0.01	0.11	2.1	0.038
G0668578		28.4	840	20.8	20.0	<0.001	0.09	6.60	3.2	2.3	0.5	27.8	0.01	0.09	4.0	0.036
G0668579		14.5	480	14.3	21.4	<0.001	0.03	2.48	2.1	0.9	0.7	13.2	<0.01	0.06	1.2	0.046
G0668580		30.2	630	22.1	23.6	<0.001	0.07	4.50	3.4	1.5	0.9	22.2	<0.01	0.09	3.1	0.056
G0668581		25.1	660	15.7	13.6	<0.001	0.08	8.63	1.5	1.5	0.6	20.5	<0.01	0.11	0.5	0.042
G0668582		16.9	370	13.2	15.7	<0.001	0.04	4.10	1.8	0.9	0.7	15.1	<0.01	0.07	0.7	0.050
G0668583		20.2	550	15.8	25.9	<0.001	0.06	4.50	2.4	1.3	0.7	21.4	<0.01	0.07	1.0	0.053
G0668584		36.7	680	17.9	22.5	<0.001	0.13	9.11	3.2	2.3	0.7	31.3	<0.01	0.10	2.7	0.065
G0668585		17.3	540	14.7	23.1	<0.001	0.06	4.42	2.0	1.1	0.7	18.7	<0.01	0.07	1.4	0.068
G0668586		5.9	290	6.5	12.7	<0.001	0.02	3.25	1.0	0.6	0.4	8.6	<0.01	0.04	0.3	0.035
G0668587		3.7	180	3.3	6.6	<0.001	0.02	1.26	0.8	0.3	0.2	9.0	<0.01	0.02	0.2	0.026
G0668588		4.8	220	4.1	8.5	<0.001	0.01	1.07	0.7	0.4	0.3	7.7	<0.01	0.02	<0.2	0.027
G0668589		19.5	450	13.5	23.7	<0.001	0.06	5.91	2.4	1.2	0.7	21.6	<0.01	0.08	2.2	0.067
G0668590		21.9	450	13.6	22.3	<0.001	0.05	4.79	2.6	1.3	0.7	19.6	<0.01	0.07	2.2	0.063
G0668591		11.3	720	10.6	12.9	<0.001	0.08	7.44	2.3	2.6	0.4	11.9	0.01	0.06	0.5	0.044
G0668592		38.7	830	24.0	34.2	<0.001	0.14	10.40	3.3	1.5	0.7	39.4	<0.01	0.15	2.4	0.079
G0668593		29.5	530	15.5	34.5	<0.001	0.09	7.99	2.2	1.3	0.4	30.8	<0.01	0.11	1.1	0.056
G0668594		10.8	340	7.2	16.9	<0.001	0.03	2.53	0.9	0.6	0.3	18.6	<0.01	0.04	<0.2	0.032
G0668595		91.2	1700	43.9	52.4	0.001	0.19	21.1	3.6	2.6	0.6	50.7	0.01	0.39	3.0	0.062
G0668596		37.7	1900	28.0	57.4	<0.001	0.26	27.3	6.5	2.3	0.7	86.4	0.01	0.14	1.6	0.168
G0668597		47.5	1480	35.3	31.6	<0.001	0.13	22.2	3.1	2.5	0.6	64.9	<0.01	0.30	2.1	0.055
G0668598		26.1	1760	23.1	36.8	<0.001	0.09	8.94	2.4	1.4	0.6	59.7	<0.01	0.19	1.6	0.066
G0668599		18.8	470	12.6	20.4	<0.001	0.04	4.67	1.9	0.8	0.6	24.2	<0.01	0.06	0.8	0.045
G0668600		24.1	750	17.7	25.2	<0.001	0.08	7.31	2.9	1.3	0.7	23.8	<0.01	0.08	3.1	0.053
G0669590		50.8	690	32.9	33.4	<0.001	0.07	5.93	6.1	1.3	0.6	42.7	0.01	0.10	3.9	0.051
G0669591		32.2	750	16.6	24.9	<0.001	0.07	4.58	2.7	1.1	0.6	42.6	<0.01	0.07	0.8	0.038
G0669592		31.8	560	18.6	16.0	<0.001	0.05	4.31	3.0	1.4	0.6	21.5	<0.01	0.06	2.4	0.045

**** See Appendix Page for comments regarding this certificate ****



ALS Chemex

EXCELLENCE IN ANALYTICAL CHEMISTRY

ALS Canada Ltd.

2103 Dollarton Hwy
North Vancouver BC V7H 0A7

Phone: 604 984 0221 Fax: 604 984 0218 www.alschemex.com

To: OVERLAND RESOURCES LTD.
604 - 700 WEST PENDER STREET
VANCOUVER BC V6C 1G8

Page: 3 - D
Total # Pages: 4 (A - D)
Plus Appendix Pages
Finalized Date: 17-JUL-2010
Account: OVERRE

Project: YBMP

CERTIFICATE OF ANALYSIS WH10089475

Sample Description	Method Analyte Units LOR	ME-MS41	ME-MS41	ME-MS41	ME-MS41	ME-MS41	ME-MS41	ME-MS41
		Ti	U	V	W	Y	Zn	Zr
		ppm	ppm	ppm	ppm	ppm	ppm	ppm
		0.02	0.05	1	0.05	0.05	2	0.5
G0669741		0.11	1.19	20	<0.05	14.05	434	2.5
G0669742		0.12	1.23	26	0.07	14.95	489	1.7
G0669743		0.14	1.09	27	0.09	12.95	670	1.5
G0669744		0.12	0.85	33	0.12	5.25	392	<0.5
G0669745		0.11	0.60	31	0.05	4.49	143	<0.5
G0669746		0.15	0.68	30	0.05	4.83	153	<0.5
G0669747		0.12	0.57	32	<0.05	3.40	137	0.5
G0669748		0.08	0.49	19	<0.05	2.87	237	0.7
G0669749		0.14	1.56	25	0.07	10.30	3530	1.8
G0669750		0.12	0.84	37	<0.05	6.75	3760	1.9
G0675851		0.18	2.13	12	<0.05	17.25	1400	2.7
G0675852		0.15	0.83	32	0.09	8.82	520	1.1
G0675853		0.06	1.54	167	<0.05	10.75	3430	2.9
G0668577		0.23	2.39	64	0.28	9.47	254	0.8
G0668578		0.19	1.28	57	0.29	4.16	129	2.6
G0668579		0.14	0.71	59	0.28	2.79	78	0.7
G0668580		0.22	1.01	82	0.37	3.87	142	1.6
G0668581		0.14	0.81	76	0.22	3.91	117	0.5
G0668582		0.14	0.65	66	0.22	2.60	80	0.5
G0668583		0.19	1.01	69	0.31	3.74	108	0.6
G0668584		0.22	0.88	90	0.29	4.46	195	1.6
G0668585		0.14	0.73	81	0.27	3.68	90	1.1
G0668586		0.08	0.42	36	0.15	1.51	35	<0.5
G0668587		0.06	0.35	22	0.07	1.42	21	<0.5
G0668588		0.08	0.33	29	0.12	1.16	24	<0.5
G0668589		0.17	0.85	81	0.28	4.07	96	1.5
G0668590		0.16	0.88	74	0.25	4.05	98	1.5
G0668591		0.15	1.77	51	0.21	17.25	51	0.8
G0668592		0.24	1.57	95	0.28	5.24	158	1.4
G0668593		0.14	1.09	66	0.21	3.93	119	0.8
G0668594		0.07	0.52	28	0.12	2.43	46	<0.5
G0668595		0.30	4.16	136	0.37	18.60	412	1.5
G0668596		0.40	2.32	169	0.17	10.25	224	2.8
G0668597		0.25	4.35	152	0.26	10.95	212	1.7
G0668598		0.20	2.65	80	0.27	8.14	157	1.2
G0668599		0.13	0.96	56	0.24	5.24	125	<0.5
G0668600		0.22	0.91	70	0.30	4.02	135	1.2
G0669590		0.27	3.72	70	0.21	19.60	161	1.6
G0669591		0.23	1.65	51	0.22	7.63	101	0.5
G0669592		0.18	1.17	47	0.24	4.84	106	1.2

***** See Appendix Page for comments regarding this certificate *****



ALS Chemex

EXCELLENCE IN ANALYTICAL CHEMISTRY

ALS Canada Ltd.

2103 Dollarton Hwy
North Vancouver BC V7H 0A7

Phone: 604 984 0221 Fax: 604 984 0218 www.alschemex.com

To: OVERLAND RESOURCES LTD.
604 - 700 WEST PENDER STREET
VANCOUVER BC V6C 1G8

Page: 4 - A
Total # Pages: 4 (A - D)
Plus Appendix Pages
Finalized Date: 17-JUL-2010
Account: OVERRE

Project: YBMP

CERTIFICATE OF ANALYSIS WH10089475

Sample Description	Method Analyte Units LOR	WEI-21	ME-MS41	ME-MS41	ME-MS41	ME-MS41	ME-MS41	ME-MS41	ME-MS41	ME-MS41	ME-MS41	ME-MS41	ME-MS41	ME-MS41	ME-MS41	ME-MS41
		Recvd Wt. kg	Ag ppm	Al %	As ppm	Au ppm	B ppm	Ba ppm	Be ppm	Bi ppm	Ca %	Cd ppm	Ce ppm	Co ppm	Cr ppm	Cs ppm
		0.02	0.01	0.01	0.1	0.2	10	10	0.05	0.01	0.01	0.01	0.02	0.1	1	0.05
G0669593		0.38	0.21	2.25	194.5	<0.2	<10	820	0.78	0.62	0.27	1.04	33.6	14.9	35	2.69
G0669594		0.36	0.62	2.57	160.5	<0.2	<10	970	0.98	0.62	0.47	0.82	39.8	17.3	35	3.84
G0669595		0.30	0.21	0.80	7.5	<0.2	<10	80	0.20	0.15	0.02	0.09	11.00	2.9	6	0.86
G0669596		0.38	0.41	1.77	45.8	<0.2	<10	530	0.59	0.41	0.39	0.49	30.6	13.6	24	2.28
G0669597		0.48	0.08	2.03	34.4	<0.2	<10	210	0.40	0.51	0.05	0.30	32.4	10.7	29	2.56
G0669598		0.42	0.15	3.02	81.3	<0.2	<10	430	0.64	0.51	0.05	0.40	35.0	14.8	44	3.38
G0669599		0.48	0.13	1.93	33.1	<0.2	<10	190	0.32	0.43	0.04	0.37	28.2	7.5	32	2.27
G0669600		0.20	0.42	1.47	41.2	<0.2	<10	530	0.54	0.27	0.60	1.14	20.0	8.1	18	1.82

***** See Appendix Page for comments regarding this certificate *****



ALS Chemex

EXCELLENCE IN ANALYTICAL CHEMISTRY

ALS Canada Ltd.

2103 Dollarton Hwy
North Vancouver BC V7H 0A7

Phone: 604 984 0221 Fax: 604 984 0218 www.alschemex.com

To: OVERLAND RESOURCES LTD.
604 - 700 WEST PENDER STREET
VANCOUVER BC V6C 1G8

Page: 4 - B
Total # Pages: 4 (A - D)
Plus Appendix Pages
Finalized Date: 17-JUL-2010
Account: OVERRE

Project: YBMP

CERTIFICATE OF ANALYSIS WH10089475

Sample Description	Method Analyte Units LOR	ME-MS41	ME-MS41	ME-MS41	ME-MS41	ME-MS41	ME-MS41	ME-MS41	ME-MS41	ME-MS41	ME-MS41	ME-MS41	ME-MS41	ME-MS41	ME-MS41	ME-MS41
		Cu ppm 0.2	Fe % 0.01	Ga ppm 0.05	Ge ppm 0.05	Hf ppm 0.02	Hg ppm 0.01	In ppm 0.005	K % 0.01	La ppm 0.2	Li ppm 0.1	Mg % 0.01	Mn ppm 5	Mo ppm 0.05	Na % 0.01	Nb ppm 0.05
G0669593		125.5	4.12	6.88	0.06	0.06	0.03	0.059	0.14	17.8	24.5	0.47	641	5.21	<0.01	1.62
G0669594		188.0	4.51	6.45	0.07	0.08	0.08	0.065	0.21	20.1	23.4	0.48	644	5.29	0.01	1.65
G0669595		16.5	0.97	3.00	<0.05	<0.02	0.03	0.010	0.02	5.6	2.3	0.03	115	0.95	0.01	0.86
G0669596		87.2	2.58	5.76	0.07	0.04	0.04	0.030	0.11	14.8	21.7	0.38	477	3.42	0.01	1.09
G0669597		42.7	3.37	7.70	0.07	0.02	0.03	0.035	0.08	15.6	23.8	0.36	371	2.89	<0.01	1.63
G0669598		57.2	4.34	10.25	0.09	0.08	0.03	0.044	0.11	16.8	39.7	0.64	340	3.78	<0.01	2.34
G0669599		46.2	4.03	9.52	0.09	0.04	0.02	0.034	0.10	13.8	23.1	0.44	231	2.99	0.01	2.29
G0669600		116.0	2.05	4.82	0.07	0.04	0.06	0.021	0.08	10.7	21.2	0.28	320	2.15	0.02	0.97

***** See Appendix Page for comments regarding this certificate *****



ALS Chemex

EXCELLENCE IN ANALYTICAL CHEMISTRY

ALS Canada Ltd.

2103 Dollarton Hwy
North Vancouver BC V7H 0A7

Phone: 604 984 0221 Fax: 604 984 0218 www.alschemex.com

To: OVERLAND RESOURCES LTD.
604 - 700 WEST PENDER STREET
VANCOUVER BC V6C 1G8

Page: 4 - C
Total # Pages: 4 (A - D)
Plus Appendix Pages
Finalized Date: 17-JUL-2010
Account: OVERRE

Project: YBMP

CERTIFICATE OF ANALYSIS WH10089475

Sample Description	Method	ME-MS41	ME-MS41	ME-MS41	ME-MS41	ME-MS41	ME-MS41	ME-MS41	ME-MS41	ME-MS41	ME-MS41	ME-MS41	ME-MS41	ME-MS41	ME-MS41	ME-MS41
	Analyte	Ni	P	Pb	Rb	Re	S	Sb	Sc	Se	Sn	Sr	Ta	Te	Th	Ti
	Units	ppm	ppm	ppm	ppm	ppm	%	ppm	ppm	ppm	ppm	ppm	ppm	ppm	ppm	%
	LOR	0.2	10	0.2	0.1	0.001	0.01	0.05	0.1	0.2	0.2	0.2	0.01	0.01	0.2	0.005
G0669593		37.8	1040	26.6	20.0	0.001	0.07	5.60	3.8	1.8	0.8	40.6	0.01	0.10	1.9	0.037
G0669594		53.2	1180	26.4	28.6	0.001	0.11	7.80	5.2	2.3	0.7	53.9	0.01	0.13	2.7	0.045
G0669595		3.9	290	6.3	5.7	<0.001	0.04	0.89	0.8	0.4	0.4	8.1	<0.01	0.02	0.2	0.028
G0669596		32.6	910	15.7	19.8	0.001	0.06	3.64	2.4	1.4	0.5	37.9	<0.01	0.06	1.1	0.037
G0669597		30.5	580	16.5	15.9	<0.001	0.04	3.16	2.8	1.3	0.8	16.9	0.01	0.06	1.9	0.045
G0669598		45.0	500	19.4	21.3	<0.001	0.04	3.73	6.2	1.5	1.0	25.9	0.01	0.07	5.2	0.070
G0669599		28.0	440	14.8	20.7	<0.001	0.03	3.40	3.8	1.1	0.8	14.7	<0.01	0.07	3.1	0.077
G0669600		46.7	600	9.5	18.9	0.001	0.06	3.09	2.4	1.8	0.4	45.7	<0.01	0.05	0.7	0.038

***** See Appendix Page for comments regarding this certificate *****



ALS Chemex

EXCELLENCE IN ANALYTICAL CHEMISTRY

ALS Canada Ltd.

2103 Dollarton Hwy
North Vancouver BC V7H 0A7

Phone: 604 984 0221 Fax: 604 984 0218 www.alschemex.com

To: OVERLAND RESOURCES LTD.
604 - 700 WEST PENDER STREET
VANCOUVER BC V6C 1G8

Page: 4 - D
Total # Pages: 4 (A - D)
Plus Appendix Pages
Finalized Date: 17-JUL-2010
Account: OVERRE

Project: YBMP

CERTIFICATE OF ANALYSIS WH10089475

Sample Description	Method Analyte Units LOR	ME-MS41	ME-MS41	ME-MS41	ME-MS41	ME-MS41	ME-MS41	ME-MS41
		Tl ppm	U ppm	V ppm	W ppm	Y ppm	Zn ppm	Zr ppm
		0.02	0.05	1	0.05	0.05	2	0.5
G0669593		0.16	2.66	73	0.38	8.80	178	1.3
G0669594		0.27	4.02	72	0.27	18.85	168	2.2
G0669595		0.06	0.45	26	0.14	1.42	17	<0.5
G0669596		0.18	1.90	51	0.22	7.39	94	1.1
G0669597		0.19	0.83	64	0.34	4.03	102	0.8
G0669598		0.22	1.06	101	0.33	5.47	145	3.2
G0669599		0.17	0.73	88	0.33	3.72	107	1.8
G0669600		0.14	4.36	42	0.18	13.95	162	1.6

***** See Appendix Page for comments regarding this certificate *****



ALS Chemex

EXCELLENCE IN ANALYTICAL CHEMISTRY

ALS Canada Ltd.

2103 Dollarton Hwy

North Vancouver BC V7H 0A7

Phone: 604 984 0221 Fax: 604 984 0218 www.alschemex.com

To: OVERLAND RESOURCES LTD.
604 - 700 WEST PENDER STREET
VANCOUVER BC V6C 1G8

Page: Appendix 1
Total # Appendix Pages: 1
Finalized Date: 17-JUL-2010
Account: OVERRE

Project: YBMP

CERTIFICATE OF ANALYSIS WH10089475

Method	CERTIFICATE COMMENTS
ME-MS41	Gold determinations by this method are semi-quantitative due to the small sample weight used (0.5g).



ALS Chemex

EXCELLENCE IN ANALYTICAL CHEMISTRY

ALS Canada Ltd.

2103 Dollarton Hwy

North Vancouver BC V7H 0A7

Phone: 604 984 0221 Fax: 604 984 0218 www.alschemex.com

To: **OVERLAND RESOURCES LTD.**
604 - 700 WEST PENDER STREET
VANCOUVER BC V6C 1G8

Page: 1
Finalized Date: 8-JUL-2010
Account: OVERRE

CERTIFICATE WH10084680

Project: YMBP

P.O. No.:

This report is for 45 Soil samples submitted to our lab in Whitehorse, YT, Canada on 24-JUN-2010.

The following have access to data associated with this certificate:

HUGH BRESSER

ALEX TOLSON

SAMPLE PREPARATION

ALS CODE	DESCRIPTION
WEI-21	Received Sample Weight
DRY-22	Drying - Maximum Temp 60C
LOG-22	Sample login - Rcd w/o BarCode
SCR-41	Screen to -180um and save both

ANALYTICAL PROCEDURES

ALS CODE	DESCRIPTION
ME-MS41	51 anal. aqua regia ICPMS

To: **OVERLAND RESOURCES LTD.**
ATTN: HUGH BRESSER
2ND FLOOR
675 MURRAY ST
WEST PERTH WA 6005
AUSTRALIA

This is the Final Report and supersedes any preliminary report with this certificate number. Results apply to samples as submitted. All pages of this report have been checked and approved for release.

Signature:

Colin Ramshaw, Vancouver Laboratory Manager



ALS Chemex

EXCELLENCE IN ANALYTICAL CHEMISTRY

ALS Canada Ltd.

2103 Dollarton Hwy
North Vancouver BC V7H 0A7

Phone: 604 984 0221 Fax: 604 984 0218 www.alschemex.com

To: OVERLAND RESOURCES LTD.
604 - 700 WEST PENDER STREET
VANCOUVER BC V6C 1G8

Page: 2 - A
Total # Pages: 3 (A - D)
Plus Appendix Pages
Finalized Date: 8-JUL-2010
Account: OVERRE

Project: YMBP

CERTIFICATE OF ANALYSIS WH10084680

Sample Description	Method	WEI-21	ME-MS41	ME-MS41	ME-MS41	ME-MS41	ME-MS41	ME-MS41	ME-MS41	ME-MS41	ME-MS41	ME-MS41	ME-MS41	ME-MS41	ME-MS41	ME-MS41
	Analyte	Recvd Wt.	Ag	Al	As	Au	B	Ba	Be	Bi	Ca	Cd	Ce	Co	Cr	Cs
Units		kg	ppm	%	ppm	ppm	ppm	ppm	ppm	ppm	%	ppm	ppm	ppm	ppm	ppm
LOR		0.02	0.01	0.01	0.1	0.2	10	10	0.05	0.01	0.01	0.01	0.02	0.1	1	0.05
G0669557		0.20	0.36	2.09	132.5	<0.2	<10	430	0.64	0.46	0.55	0.50	27.7	22.7	40	2.69
G0669558		0.18	0.24	2.31	91.3	<0.2	<10	430	0.63	0.42	0.36	0.60	26.2	23.5	44	3.47
G0669559		0.36	0.14	2.37	44.1	<0.2	<10	430	0.58	0.33	0.23	0.32	26.1	21.0	48	2.93
G0669560		0.38	0.10	1.62	15.0	<0.2	<10	140	0.33	0.15	0.12	0.06	10.90	9.9	29	1.58
G0669561		0.36	0.15	3.46	54.7	<0.2	<10	370	0.67	0.35	0.23	0.42	22.1	45.9	65	4.50
G0669562		0.34	0.22	1.84	39.9	<0.2	<10	240	0.50	0.31	0.19	0.14	17.90	26.3	30	3.36
G0669563		0.44	0.26	3.87	62.9	<0.2	<10	1050	0.78	0.46	0.24	0.23	33.2	39.9	82	4.90
G0669564		0.52	0.16	2.34	56.7	<0.2	<10	630	0.61	0.41	0.17	0.25	30.4	21.5	62	3.79
G0669565		0.52	0.12	2.08	70.5	<0.2	<10	230	0.48	0.71	0.19	0.62	32.7	17.5	60	2.82
G0669566		0.46	0.09	1.90	54.9	<0.2	<10	230	0.69	0.48	0.18	0.46	29.4	13.4	30	2.20
G0669567		0.48	0.29	1.25	35.8	<0.2	<10	260	1.03	0.23	0.20	0.91	31.2	10.5	16	3.20
G0669568		0.60	0.23	1.47	24.6	<0.2	<10	480	0.73	0.31	0.10	0.86	37.3	10.8	26	3.04
G0669569		0.28	0.64	1.27	22.5	<0.2	<10	410	0.64	0.27	0.29	0.32	25.9	9.9	20	2.46
G0669570		0.22	0.72	0.31	2.3	<0.2	<10	70	0.10	0.05	0.04	0.10	4.41	1.5	3	0.50
G0669571		0.40	0.37	1.27	16.2	<0.2	<10	210	0.45	0.26	0.04	0.77	21.8	6.4	20	2.23
G0669572		0.48	0.46	1.96	29.9	<0.2	<10	1240	1.11	0.42	0.29	1.21	53.9	15.7	42	4.09
G0669573		0.52	0.25	1.17	30.4	<0.2	<10	230	0.38	0.29	0.06	0.32	34.9	7.1	26	2.05
G0669574		0.44	0.17	0.89	17.0	<0.2	<10	180	0.28	0.25	0.04	0.21	23.4	3.7	16	1.99
G0669575		0.40	0.16	1.25	19.5	<0.2	<10	320	0.37	0.36	0.04	0.41	31.7	10.5	20	2.14
G0669576		0.44	0.29	1.29	29.6	<0.2	<10	360	0.52	0.38	0.03	0.33	35.7	6.6	28	3.20
G0669577		0.46	0.33	0.74	16.4	<0.2	<10	290	0.34	0.33	0.02	0.40	29.7	3.0	17	3.23
G0669578		0.44	0.76	1.35	29.2	<0.2	<10	390	0.55	0.31	0.02	0.29	28.2	5.4	31	3.83
G0669579		0.36	0.61	2.45	14.8	<0.2	<10	190	0.89	0.15	0.06	0.52	15.60	11.5	40	4.69
G0669580		0.30	0.40	1.94	17.4	<0.2	<10	210	0.77	0.21	0.06	0.61	18.25	10.5	35	4.14
G0669581		0.48	0.19	1.35	29.8	<0.2	<10	380	0.51	0.29	0.04	0.72	28.4	5.1	38	4.20
G0669582		0.62	1.51	1.74	65.5	<0.2	<10	560	0.45	0.33	0.04	0.52	42.1	15.7	55	4.47
G0669583		0.44	0.45	2.85	28.1	<0.2	<10	310	1.11	0.21	0.05	1.54	25.5	26.2	53	5.22
G0669584		0.44	0.93	0.68	32.1	<0.2	<10	1070	0.32	0.22	0.05	0.41	25.1	4.0	15	2.14
G0669585		0.52	1.24	1.76	42.4	<0.2	<10	380	0.67	0.32	0.03	0.58	28.2	4.3	46	3.18
G0669586		0.36	0.46	1.78	29.9	<0.2	<10	880	0.85	0.29	0.03	0.52	53.8	12.9	33	3.93
G0669587		0.28	0.27	2.92	20.3	<0.2	<10	180	1.20	0.16	0.08	1.20	21.2	20.2	50	4.41
G0669588		0.54	0.48	1.47	30.5	<0.2	<10	230	0.56	0.28	0.07	2.35	20.2	6.5	42	2.38
G0669589		0.36	0.79	1.95	97.7	<0.2	<10	380	0.80	0.31	0.20	13.95	28.5	31.2	40	4.77
G0669601		0.60	4.07	1.74	35.8	<0.2	<10	280	0.54	0.28	0.06	0.58	24.5	6.5	33	2.35
G0669602		0.66	0.55	1.71	53.7	<0.2	<10	580	0.62	0.31	0.05	0.75	26.5	9.7	27	2.52
G0669603		0.70	0.63	1.71	76.4	<0.2	<10	1570	0.80	0.34	0.02	0.44	37.1	5.2	22	2.36
G0669604		0.40	0.29	2.11	37.1	<0.2	<10	730	0.63	0.40	0.07	0.57	26.6	9.0	28	3.89
G0669605		0.42	0.28	1.23	18.2	<0.2	<10	380	0.48	0.31	0.04	1.46	22.2	9.9	18	3.10
G0669606		0.50	0.20	1.81	35.9	<0.2	<10	460	0.67	0.37	0.07	0.90	28.3	19.0	27	2.77
G0669607		0.38	0.43	1.64	30.8	<0.2	<10	330	0.61	0.48	0.05	1.36	32.7	8.8	52	2.80

***** See Appendix Page for comments regarding this certificate *****



ALS Chemex

EXCELLENCE IN ANALYTICAL CHEMISTRY

ALS Canada Ltd.

2103 Dollarton Hwy

North Vancouver BC V7H 0A7

Phone: 604 984 0221 Fax: 604 984 0218 www.alschemex.com

To: OVERLAND RESOURCES LTD.
604 - 700 WEST PENDER STREET
VANCOUVER BC V6C 1G8

Page: 2 - B
Total # Pages: 3 (A - D)
Plus Appendix Pages
Finalized Date: 8-JUL-2010
Account: OVERRE

Project: YMBP

CERTIFICATE OF ANALYSIS WH10084680

Sample Description	ME-MS41	ME-MS41	ME-MS41	ME-MS41	ME-MS41	ME-MS41	ME-MS41	ME-MS41	ME-MS41	ME-MS41	ME-MS41	ME-MS41	ME-MS41	ME-MS41	ME-MS41
	Cu	Fe	Ga	Ge	Hf	Hg	In	K	La	Li	Mg	Mn	Mo	Na	Nb
	ppm	%	ppm	ppm	ppm	ppm	ppm	%	ppm	ppm	%	ppm	ppm	%	ppm
	0.2	0.01	0.05	0.05	0.02	0.01	0.005	0.01	0.2	0.1	0.01	5	0.05	0.01	0.05
G0669557	69.1	3.08	7.19	0.07	0.02	0.03	0.034	0.14	14.1	31.8	0.69	983	1.81	0.03	1.24
G0669558	86.0	3.26	7.36	0.08	0.02	0.03	0.046	0.15	13.0	29.1	0.73	769	1.48	0.03	1.30
G0669559	70.1	3.95	8.85	0.09	0.02	0.02	0.032	0.24	12.5	34.0	0.91	383	1.81	0.02	1.59
G0669560	59.3	2.36	6.19	0.05	0.02	0.03	0.015	0.08	5.5	22.7	0.50	123	1.05	0.03	1.24
G0669561	149.0	5.32	11.80	0.09	0.03	0.02	0.047	0.30	10.3	47.6	1.32	684	1.42	0.03	1.88
G0669562	91.2	2.96	6.73	0.06	0.02	0.03	0.028	0.13	8.1	28.4	0.51	671	1.38	0.03	1.19
G0669563	157.0	5.31	11.80	0.10	0.04	0.03	0.047	0.39	14.8	50.0	1.40	765	2.75	0.02	1.60
G0669564	63.4	4.18	9.63	0.08	0.02	0.01	0.039	0.18	14.7	39.1	0.95	509	2.32	0.02	1.76
G0669565	49.2	3.30	9.59	0.08	0.02	0.02	0.032	0.13	16.0	33.6	0.74	517	1.70	0.02	2.51
G0669566	47.1	2.95	7.29	0.07	0.02	0.01	0.032	0.14	14.8	33.5	0.61	361	1.69	0.03	2.15
G0669567	53.7	2.11	4.11	0.08	0.02	0.03	0.023	0.09	17.5	30.5	0.26	418	2.12	0.03	1.05
G0669568	46.2	3.38	6.00	0.09	0.02	0.02	0.055	0.12	19.3	25.7	0.41	400	3.44	0.02	1.55
G0669569	53.9	2.38	5.01	0.07	0.02	0.02	0.024	0.11	13.8	25.4	0.30	531	3.20	0.02	0.93
G0669570	6.3	0.50	1.57	<0.05	<0.02	0.02	<0.005	0.03	2.2	1.5	0.02	63	0.51	0.03	0.19
G0669571	29.2	3.02	6.47	0.06	0.02	0.03	0.026	0.07	11.3	14.1	0.18	291	2.93	0.02	1.22
G0669572	71.1	3.89	6.83	0.11	0.04	0.04	0.045	0.21	25.2	44.6	0.63	831	6.14	0.02	1.60
G0669573	56.5	4.40	5.71	0.10	0.02	0.02	0.041	0.10	17.9	11.8	0.26	220	5.21	0.01	0.92
G0669574	28.1	2.55	5.88	0.07	<0.02	0.02	0.023	0.07	11.8	7.1	0.16	160	3.09	0.02	0.80
G0669575	40.7	3.31	7.81	0.07	<0.02	0.03	0.028	0.07	16.2	6.9	0.11	350	3.67	0.02	0.95
G0669576	55.5	4.71	7.98	0.10	0.03	0.01	0.045	0.14	18.7	15.8	0.28	236	5.91	0.02	1.81
G0669577	33.2	2.71	5.64	0.07	0.03	0.01	0.031	0.12	15.3	6.1	0.12	107	3.55	0.02	1.46
G0669578	67.9	4.85	6.70	0.10	0.02	0.04	0.055	0.15	14.7	13.2	0.25	319	5.59	0.02	1.28
G0669579	47.2	4.21	8.86	0.10	0.08	0.03	0.024	0.11	7.8	35.5	1.39	1140	2.51	0.01	2.84
G0669580	49.4	3.98	8.41	0.10	0.05	0.03	0.028	0.12	9.2	27.7	0.83	1000	3.13	0.01	2.32
G0669581	79.3	4.61	9.01	0.12	0.02	0.03	0.044	0.10	14.9	15.0	0.27	195	5.92	0.01	1.34
G0669582	203	8.65	8.98	0.22	0.07	0.07	0.142	0.31	20.5	10.6	0.30	1070	15.80	0.02	1.43
G0669583	94.0	6.31	9.43	0.16	0.05	0.03	0.048	0.11	11.6	36.6	1.25	2770	4.78	0.01	1.64
G0669584	46.5	3.11	3.11	0.10	0.02	0.06	0.039	0.16	13.6	6.6	0.11	236	13.80	0.02	0.37
G0669585	92.1	6.32	9.71	0.15	0.06	0.05	0.058	0.14	15.6	17.4	0.30	215	8.38	0.02	3.23
G0669586	61.3	4.59	6.41	0.13	0.05	0.03	0.045	0.18	27.2	28.9	0.53	817	12.40	0.02	0.69
G0669587	94.7	4.58	8.73	0.12	0.10	0.04	0.041	0.07	10.0	45.0	1.09	930	2.91	0.01	2.08
G0669588	66.1	5.54	8.01	<0.05	0.02	0.03	0.035	0.09	11.4	19.0	0.27	327	4.19	0.02	1.82
G0669589	71.6	7.60	8.16	0.07	0.04	0.04	0.048	0.06	11.3	22.5	0.45	6720	5.21	0.02	0.96
G0669601	45.3	5.27	6.44	<0.05	0.02	0.07	0.046	0.10	13.9	21.7	0.33	233	6.17	0.02	1.65
G0669602	75.0	4.18	5.26	<0.05	0.02	0.03	0.041	0.10	13.8	27.9	0.34	321	4.00	0.03	1.10
G0669603	110.5	5.95	4.30	0.07	0.04	0.04	0.053	0.09	19.6	16.4	0.16	176	3.19	0.03	0.69
G0669604	52.9	4.02	5.99	<0.05	0.03	0.09	0.042	0.10	13.2	27.9	0.37	318	3.16	0.02	1.44
G0669605	40.7	2.93	5.62	<0.05	<0.02	0.03	0.028	0.07	11.7	14.1	0.17	774	2.44	0.03	1.07
G0669606	61.7	3.83	7.04	<0.05	0.03	0.02	0.036	0.09	14.7	37.8	0.33	493	2.86	0.02	1.82
G0669607	40.5	3.89	10.10	<0.05	0.03	0.02	0.034	0.16	17.7	16.7	0.32	546	6.40	0.03	2.02

***** See Appendix Page for comments regarding this certificate *****



ALS Chemex

EXCELLENCE IN ANALYTICAL CHEMISTRY

ALS Canada Ltd.

2103 Dollarton Hwy
North Vancouver BC V7H 0A7

Phone: 604 984 0221 Fax: 604 984 0218 www.alschemex.com

To: OVERLAND RESOURCES LTD.
604 - 700 WEST PENDER STREET
VANCOUVER BC V6C 1G8

Page: 2 - C
Total # Pages: 3 (A - D)
Plus Appendix Pages
Finalized Date: 8-JUL-2010
Account: OVERRE

Project: YMBP

CERTIFICATE OF ANALYSIS WH10084680

Sample Description	Method	ME-MS41	ME-MS41	ME-MS41	ME-MS41	ME-MS41	ME-MS41	ME-MS41	ME-MS41	ME-MS41	ME-MS41	ME-MS41	ME-MS41	ME-MS41	ME-MS41	ME-MS41
	Analyte	Ni	P	Pb	Rb	Re	S	Sb	Sc	Se	Sn	Sr	Ta	Te	Th	Tl
Units		ppm	ppm	ppm	ppm	ppm	%	ppm	ppm	ppm	ppm	ppm	ppm	ppm	ppm	ppm
LOR		0.2	10	0.2	0.1	0.001	0.01	0.05	0.1	0.2	0.2	0.2	0.01	0.01	0.2	0.005
G0669557		39.3	740	13.0	26.6	<0.001	0.04	2.31	3.7	0.8	0.7	45.3	<0.01	0.05	0.6	0.056
G0669558		46.2	560	11.0	26.7	<0.001	0.03	2.24	4.5	0.7	0.8	35.4	<0.01	0.05	0.9	0.060
G0669559		44.0	400	9.2	32.2	<0.001	0.02	2.57	5.9	0.7	0.7	28.3	<0.01	0.04	1.7	0.102
G0669560		23.2	240	3.9	15.7	<0.001	0.01	1.25	3.6	0.4	0.4	13.1	<0.01	0.02	1.0	0.082
G0669561		68.2	520	8.9	42.6	<0.001	0.02	2.06	7.6	0.6	0.8	36.9	<0.01	0.04	2.0	0.139
G0669562		39.2	310	7.4	18.6	<0.001	0.02	2.16	4.3	0.5	0.5	35.9	<0.01	0.03	1.3	0.071
G0669563		78.5	410	10.1	35.7	<0.001	0.06	4.16	10.9	1.1	0.9	84.1	0.01	0.06	4.5	0.122
G0669564		46.3	330	10.9	32.7	<0.001	0.04	2.84	7.2	0.8	0.8	28.9	<0.01	0.05	2.9	0.080
G0669565		47.2	360	10.7	31.3	<0.001	0.01	1.55	4.7	0.6	1.4	28.9	<0.01	0.07	2.6	0.082
G0669566		27.0	360	9.0	24.8	<0.001	0.02	1.32	4.3	0.6	0.8	36.6	<0.01	0.06	2.1	0.072
G0669567		28.4	460	11.4	17.2	<0.001	0.03	3.58	2.2	0.9	0.4	27.7	<0.01	0.04	1.2	0.034
G0669568		34.7	480	13.4	23.3	0.001	0.04	5.39	2.6	1.3	0.6	28.1	<0.01	0.07	2.2	0.059
G0669569		26.6	540	9.6	20.1	0.001	0.05	4.27	1.4	1.3	0.5	37.0	<0.01	0.07	0.3	0.041
G0669570		2.5	290	1.8	4.5	<0.001	<0.01	0.74	0.2	0.2	<0.2	9.3	<0.01	0.01	<0.2	0.013
G0669571		16.1	530	12.3	16.3	<0.001	0.04	3.34	1.5	1.1	0.6	19.8	<0.01	0.06	0.6	0.045
G0669572		63.0	850	16.9	31.2	0.001	0.11	7.32	4.4	1.8	0.6	47.0	<0.01	0.10	2.8	0.079
G0669573		32.6	1030	14.5	15.8	0.001	0.11	11.25	1.9	2.2	0.5	28.7	<0.01	0.10	0.9	0.042
G0669574		15.4	720	11.1	14.7	<0.001	0.05	4.04	1.2	1.0	0.5	17.4	<0.01	0.06	0.3	0.040
G0669575		18.3	590	15.4	18.0	<0.001	0.04	3.57	1.4	1.1	0.8	18.3	<0.01	0.08	0.4	0.038
G0669576		35.5	870	18.9	25.7	0.001	0.12	10.10	3.0	2.1	0.7	32.4	<0.01	0.13	3.1	0.067
G0669577		13.4	480	15.5	26.8	<0.001	0.12	4.89	1.8	1.2	0.7	30.9	<0.01	0.08	2.4	0.062
G0669578		22.7	990	17.7	26.1	<0.001	0.21	11.05	2.0	3.0	0.6	45.2	<0.01	0.13	1.1	0.056
G0669579		33.9	590	9.0	20.4	0.001	0.03	3.01	2.1	2.0	0.5	14.3	0.01	0.06	2.0	0.094
G0669580		36.8	600	11.1	21.9	<0.001	0.05	3.92	2.4	1.9	0.6	20.2	0.01	0.08	2.0	0.078
G0669581		31.0	910	16.4	22.7	<0.001	0.11	9.85	1.7	2.8	0.9	32.9	<0.01	0.11	0.5	0.049
G0669582		61.5	2480	24.0	26.9	0.001	0.67	29.1	6.0	8.8	0.9	108.5	0.01	0.20	4.8	0.054
G0669583		88.4	890	13.2	26.9	<0.001	0.11	10.65	4.4	3.2	0.8	23.2	0.01	0.10	2.5	0.071
G0669584		24.2	1200	15.1	18.0	0.001	0.33	12.65	1.2	4.7	0.4	42.1	<0.01	0.11	0.4	0.021
G0669585		28.0	1260	18.4	20.0	0.001	0.25	15.15	3.0	4.5	0.8	52.1	0.01	0.14	2.8	0.086
G0669586		37.7	1080	19.7	29.4	0.001	0.27	9.50	3.0	3.3	0.5	49.9	<0.01	0.10	4.7	0.022
G0669587		90.1	510	9.7	15.0	<0.001	0.09	5.25	4.2	2.7	0.6	20.2	0.02	0.08	3.4	0.071
G0669588		37.0	760	14.9	18.6	<0.001	0.08	9.13	2.0	2.0	0.9	28.4	<0.01	0.15	1.1	0.060
G0669589		80.8	960	17.3	21.3	<0.001	0.06	18.05	2.5	1.7	0.9	36.4	<0.01	0.14	0.8	0.045
G0669601		27.2	940	15.4	17.2	0.001	0.16	17.55	2.4	4.2	0.7	34.7	<0.01	0.11	2.4	0.048
G0669602		40.5	820	13.2	18.4	0.001	0.11	11.05	2.4	1.8	0.5	31.4	<0.01	0.11	1.4	0.040
G0669603		50.4	1130	18.2	12.5	0.001	0.18	35.7	2.2	3.6	0.3	67.4	<0.01	0.23	4.1	0.023
G0669604		36.2	680	14.0	20.4	<0.001	0.13	9.70	2.9	1.5	0.6	32.3	<0.01	0.11	3.0	0.043
G0669605		19.0	510	11.7	18.5	<0.001	0.09	4.41	1.9	0.9	0.6	21.9	<0.01	0.08	1.1	0.039
G0669606		34.9	520	14.0	26.8	<0.001	0.08	5.83	2.9	0.9	0.7	31.8	<0.01	0.10	3.0	0.053
G0669607		20.4	760	23.8	39.1	<0.001	0.18	5.88	2.3	2.1	1.1	56.3	<0.01	0.10	0.9	0.098

***** See Appendix Page for comments regarding this certificate *****



ALS Chemex

EXCELLENCE IN ANALYTICAL CHEMISTRY

ALS Canada Ltd.

2103 Dollarton Hwy

North Vancouver BC V7H 0A7

Phone: 604 984 0221 Fax: 604 984 0218 www.alschemex.com

To: OVERLAND RESOURCES LTD.
604 - 700 WEST PENDER STREET
VANCOUVER BC V6C 1G8

Page: 2 - D
Total # Pages: 3 (A - D)
Plus Appendix Pages
Finalized Date: 8-JUL-2010
Account: OVERRE

Project: YMBP

CERTIFICATE OF ANALYSIS WH10084680

Sample Description	Method Analyte Units LOR	ME-MS41	ME-MS41	ME-MS41	ME-MS41	ME-MS41	ME-MS41	
		Tl	U	V	W	Y	Zn	Zr
		ppm	ppm	ppm	ppm	ppm	ppm	ppm
		0.02	0.05	1	0.05	0.05	2	0.5
G0669557		0.17	1.18	70	0.28	7.34	117	0.5
G0669558		0.19	0.89	68	0.23	8.24	103	0.6
G0669559		0.16	0.71	94	0.23	5.87	88	0.9
G0669560		0.10	0.37	59	0.14	2.62	45	0.8
G0669561		0.17	0.58	128	0.18	6.40	119	1.0
G0669562		0.13	0.55	66	0.16	4.13	64	0.5
G0669563		0.36	1.13	128	0.20	7.37	110	1.2
G0669564		0.19	0.77	103	0.20	5.49	92	0.8
G0669565		0.14	0.75	82	0.32	5.21	98	0.7
G0669566		0.14	0.83	61	0.27	6.70	86	0.7
G0669567		0.15	4.66	33	0.18	10.65	160	0.7
G0669568		0.19	1.10	65	0.34	6.77	172	0.7
G0669569		0.16	1.44	48	0.23	9.36	82	0.5
G0669570		0.04	0.32	13	0.06	0.75	10	<0.5
G0669571		0.16	0.80	64	0.26	2.99	78	0.6
G0669572		0.37	2.66	87	0.54	14.00	220	1.4
G0669573		0.19	1.11	63	0.33	6.04	123	0.7
G0669574		0.15	0.64	57	0.23	3.06	63	0.5
G0669575		0.18	0.82	80	0.28	3.81	73	<0.5
G0669576		0.30	1.11	98	0.30	4.78	140	1.3
G0669577		0.23	0.72	79	0.20	3.07	65	1.1
G0669578		0.27	1.03	88	0.24	3.82	115	0.9
G0669579		0.20	0.73	97	0.26	4.87	152	3.5
G0669580		0.22	0.74	86	0.28	4.36	162	2.0
G0669581		0.25	1.03	98	0.26	6.95	125	0.7
G0669582		0.68	3.48	107	0.40	9.47	256	3.8
G0669583		0.34	1.50	125	0.21	12.95	364	1.6
G0669584		0.59	2.56	61	0.21	4.11	102	<0.5
G0669585		0.25	1.56	124	0.39	5.31	142	3.1
G0669586		0.49	2.38	73	0.18	5.93	147	1.4
G0669587		0.27	1.73	110	0.23	12.85	330	3.7
G0669588		0.15	0.72	101	0.46	4.83	284	0.7
G0669589		0.21	1.00	114	0.36	10.50	606	0.6
G0669601		0.26	1.09	78	0.36	3.85	158	0.5
G0669602		0.19	1.18	54	0.28	4.32	129	<0.5
G0669603		0.16	1.17	45	0.19	5.15	153	1.0
G0669604		0.19	0.87	59	0.30	4.36	139	0.9
G0669605		0.12	0.71	61	0.24	2.95	123	<0.5
G0669606		0.17	0.85	73	0.33	4.83	170	1.1
G0669607		0.27	1.65	146	0.26	4.73	112	1.5

***** See Appendix Page for comments regarding this certificate *****



ALS Chemex

EXCELLENCE IN ANALYTICAL CHEMISTRY

ALS Canada Ltd.

2103 Dollarton Hwy

North Vancouver BC V7H 0A7

Phone: 604 984 0221 Fax: 604 984 0218 www.alschemex.com

To: OVERLAND RESOURCES LTD.
604 - 700 WEST PENDER STREET
VANCOUVER BC V6C 1G8

Page: 3 - A
Total # Pages: 3 (A - D)
Plus Appendix Pages
Finalized Date: 8-JUL-2010
Account: OVERRE

Project: YMBP

CERTIFICATE OF ANALYSIS WH10084680

Sample Description	Method Analyte Units LOR	WEI-21	ME-MS41	ME-MS41	ME-MS41	ME-MS41	ME-MS41	ME-MS41	ME-MS41	ME-MS41	ME-MS41	ME-MS41	ME-MS41	ME-MS41	ME-MS41	ME-MS41
		Recvd Wt kg	Ag ppm	Al %	As ppm	Au ppm	B ppm	Ba ppm	Be ppm	Bi ppm	Ca %	Cd ppm	Ce ppm	Co ppm	Cr ppm	Cs ppm
		0.02	0.01	0.01	0.1	0.2	10	10	0.05	0.01	0.01	0.01	0.02	0.1	1	0.05
G0669608		0.32	0.09	0.87	11.9	<0.2	<10	130	0.29	0.22	0.05	0.35	15.85	7.1	12	1.30
G0669609		0.48	0.09	1.89	22.1	<0.2	<10	220	1.26	0.40	0.08	0.62	33.2	30.1	28	3.10
G0669610		0.30	0.30	1.31	15.8	<0.2	<10	260	0.64	0.32	0.05	2.00	25.6	25.6	17	2.13
G0669611		0.42	0.22	0.78	6.9	<0.2	<10	180	0.34	0.22	0.04	3.33	14.35	7.8	12	1.58
G0669612		0.44	0.09	1.65	95.2	<0.2	<10	230	0.62	0.66	0.10	1.13	34.5	13.5	28	2.60

***** See Appendix Page for comments regarding this certificate *****



ALS Chemex

EXCELLENCE IN ANALYTICAL CHEMISTRY

ALS Canada Ltd.

2103 Dollarton Hwy

North Vancouver BC V7H 0A7

Phone: 604 984 0221 Fax: 604 984 0218 www.alschemex.com

To: OVERLAND RESOURCES LTD.
604 - 700 WEST PENDER STREET
VANCOUVER BC V6C 1G8

Page: 3 - B
Total # Pages: 3 (A - D)
Plus Appendix Pages
Finalized Date: 8-JUL-2010
Account: OVERRE

Project: YMBP

CERTIFICATE OF ANALYSIS WH10084680

Sample Description	Method	ME-MS41	ME-MS41	ME-MS41	ME-MS41	ME-MS41	ME-MS41	ME-MS41	ME-MS41	ME-MS41	ME-MS41	ME-MS41	ME-MS41	ME-MS41	ME-MS41	
	Analyte	Cu	Fe	Ga	Ge	Hf	Hg	In	K	La	Li	Mg	Mn	Mo	Na	
Units		ppm	%	ppm	ppm	ppm	ppm	ppm	%	ppm	ppm	%	ppm	ppm	%	
LOR		0.2	0.01	0.05	0.05	0.02	0.01	0.005	0.01	0.2	0.1	0.01	5	0.05	0.01	
G0669608		25.3	1.65	4.03	<0.05	<0.02	0.02	0.014	0.07	7.7	7.6	0.14	390	1.73	0.02	0.49
G0669609		51.5	4.16	6.19	<0.05	0.02	0.03	0.029	0.15	16.7	31.8	0.43	1030	3.06	0.02	1.43
G0669610		41.6	2.75	4.98	<0.05	0.02	0.02	0.019	0.09	12.1	11.9	0.18	1560	3.88	0.03	1.24
G0669611		20.8	1.63	4.24	<0.05	<0.02	0.03	0.012	0.07	7.2	3.7	0.09	613	1.94	0.03	0.27
G0669612		19.7	3.46	7.86	<0.05	0.02	0.03	0.027	0.16	16.5	32.5	0.42	712	1.68	0.02	1.53

***** See Appendix Page for comments regarding this certificate *****



ALS Chemex

EXCELLENCE IN ANALYTICAL CHEMISTRY

ALS Canada Ltd.

2103 Dollarton Hwy

North Vancouver BC V7H 0A7

Phone: 604 984 0221 Fax: 604 984 0218 www.alschemex.com

To: OVERLAND RESOURCES LTD.
604 - 700 WEST PENDER STREET
VANCOUVER BC V6C 1G8

Page: 3 - C
Total # Pages: 3 (A - D)
Plus Appendix Pages
Finalized Date: 8-JUL-2010
Account: OVERRE

Project: YMBP

CERTIFICATE OF ANALYSIS WH10084680

Sample Description	Method Analyte Units LOR	ME-MS41	ME-MS41	ME-MS41	ME-MS41	ME-MS41	ME-MS41	ME-MS41	ME-MS41	ME-MS41	ME-MS41	ME-MS41	ME-MS41	ME-MS41	ME-MS41	
		Ni	P	Pb	Rb	Re	S	Sb	Sc	Se	Sn	Sr	Ta	Te	Th	Ti
		ppm	ppm	ppm	ppm	ppm	%	ppm	ppm	ppm	ppm	ppm	ppm	ppm	ppm	%
		0.2	10	0.2	0.1	0.001	0.01	0.05	0.1	0.2	0.2	0.2	0.01	0.01	0.2	0.005
G0669608		10.2	430	8.2	13.7	<0.001	0.04	1.77	0.9	0.3	0.4	14.7	<0.01	0.06	<0.2	0.033
G0669609		45.5	660	16.3	27.2	<0.001	0.05	3.36	2.9	0.8	0.7	18.0	<0.01	0.06	2.8	0.063
G0669610		19.8	680	10.9	22.6	<0.001	0.05	2.38	1.7	0.6	0.5	19.3	<0.01	0.06	1.1	0.053
G0669611		10.2	900	10.0	18.2	<0.001	0.06	1.56	0.5	0.3	0.5	13.6	<0.01	0.05	<0.2	0.019
G0669612		25.0	510	17.1	52.3	<0.001	0.05	2.74	2.3	0.4	0.8	19.2	<0.01	0.08	1.4	0.064

***** See Appendix Page for comments regarding this certificate *****



ALS Chemex

EXCELLENCE IN ANALYTICAL CHEMISTRY

ALS Canada Ltd.

2103 Dollarton Hwy

North Vancouver BC V7H 0A7

Phone: 604 984 0221 Fax: 604 984 0218 www.alschemex.com

To: OVERLAND RESOURCES LTD.
604 - 700 WEST PENDER STREET
VANCOUVER BC V6C 1G8

Page: 3 - D
Total # Pages: 3 (A - D)
Plus Appendix Pages
Finalized Date: 8-JUL-2010
Account: OVERRE

Project: YMBP

CERTIFICATE OF ANALYSIS WH10084680

Sample Description	Method	ME-MS41	ME-MS41	ME-MS41	ME-MS41	ME-MS41	ME-MS41	ME-MS41
	Analyte	Tl	U	V	W	Y	Zn	Zr
	Units	ppm	ppm	ppm	ppm	ppm	ppm	ppm
LOR		0.02	0.05	1	0.05	0.05	2	0.5
G0669608		0.09	0.48	35	0.24	1.85	40	<0.5
G0669609		0.20	1.30	57	0.42	5.47	193	<0.5
G0669610		0.16	1.58	50	0.27	3.22	118	<0.5
G0669611		0.11	0.80	45	0.13	1.66	85	<0.5
G0669612		0.18	0.63	56	0.27	3.24	137	0.6

***** See Appendix Page for comments regarding this certificate *****



ALS Chemex

EXCELLENCE IN ANALYTICAL CHEMISTRY

ALS Canada Ltd.

2103 Dollarton Hwy

North Vancouver BC V7H 0A7

Phone: 604 984 0221 Fax: 604 984 0218 www.alschemex.com

To: OVERLAND RESOURCES LTD.
604 - 700 WEST PENDER STREET
VANCOUVER BC V6C 1G8

Page: Appendix 1
Total # Appendix Pages: 1
Finalized Date: 8-JUL-2010
Account: OVERRE

Project: YMBP

CERTIFICATE OF ANALYSIS WH10084680

Method	CERTIFICATE COMMENTS
ME-MS41	Gold determinations by this method are semi-quantitative due to the small sample weight used (0.5g).

Appendix B: Claim Data

District	Grant #	Type	Name	#	Owner	Recording Date	Expiry Date	Status	Map #	Ops #
Mayo	YC67832	Quartz	B	53	18526 Yukon Inc. - 10%, Overland Resources Yukon Ltd. - 90%	01/05/2008	20/03/2016	Active	105N1	1500120283
Mayo	YC67834	Quartz	B	55	18526 Yukon Inc. - 10%, Overland Resources Yukon Ltd. - 90%	01/05/2008	20/03/2016	Active	105N1	1500120285
Mayo	YC67836	Quartz	B	57	18526 Yukon Inc. - 10%, Overland Resources Yukon Ltd. - 90%	01/05/2008	20/03/2016	Active	105N1	1500120287
Mayo	YC67838	Quartz	B	59	18526 Yukon Inc. - 10%, Overland Resources Yukon Ltd. - 90%	01/05/2008	20/03/2016	Active	105N1	1500120289
Mayo	YC67840	Quartz	B	61	18526 Yukon Inc. - 10%, Overland Resources Yukon Ltd. - 90%	01/05/2008	20/03/2016	Active	105N1	1500120291
Mayo	YC67842	Quartz	B	63	18526 Yukon Inc. - 10%, Overland Resources Yukon Ltd. - 90%	01/05/2008	20/03/2016	Active	105N1	1500120293
Mayo	YC67844	Quartz	B	65	18526 Yukon Inc. - 10%, Overland Resources Yukon Ltd. - 90%	01/05/2008	20/03/2016	Active	105N1	1500120295
Mayo	YC67845	Quartz	B	66	18526 Yukon Inc. - 10%, Overland Resources Yukon Ltd. - 90%	01/05/2008	20/03/2016	Active	105N1	1500120296
Mayo	YC67846	Quartz	B	67	18526 Yukon Inc. - 10%, Overland Resources Yukon Ltd. - 90%	01/05/2008	20/03/2016	Active	105N1	1500120297
Mayo	YC67847	Quartz	B	68	18526 Yukon Inc. - 10%, Overland Resources Yukon Ltd. - 90%	01/05/2008	20/03/2016	Active	105N1	1500120298
Mayo	YC67848	Quartz	B	69	18526 Yukon Inc. - 10%, Overland Resources Yukon Ltd. - 90%	01/05/2008	20/03/2016	Active	105N1	1500120299
Mayo	YC67849	Quartz	B	70	18526 Yukon Inc. - 10%, Overland Resources Yukon Ltd. - 90%	01/05/2008	20/03/2016	Active	105N1	1500120300
Mayo	YC67850	Quartz	B	71	18526 Yukon Inc. - 10%, Overland Resources Yukon Ltd. - 90%	01/05/2008	20/03/2016	Active	105N1	1500120301
Mayo	YC67851	Quartz	B	72	18526 Yukon Inc. - 10%, Overland Resources Yukon Ltd. - 90%	01/05/2008	20/03/2016	Active	105N1	1500120302
Mayo	YC67852	Quartz	B	73	18526 Yukon Inc. - 10%, Overland Resources Yukon Ltd. - 90%	01/05/2008	20/03/2016	Active	105N1	1500120303

Mayo	YC67853	Quartz	B	74	18526 Yukon Inc. - 10%, Overland Resources Yukon Ltd. - 90%	01/05/2008	20/03/2016	Active	105N1	1500120304
Mayo	YC67854	Quartz	B	79	18526 Yukon Inc. - 10%, Overland Resources Yukon Ltd. - 90%	01/05/2008	20/03/2016	Active	105K16	1500120305
Mayo	YC67855	Quartz	B	80	18526 Yukon Inc. - 10%, Overland Resources Yukon Ltd. - 90%	01/05/2008	20/03/2016	Active	105K16	1500120306
Mayo	YC67856	Quartz	B	81	18526 Yukon Inc. - 10%, Overland Resources Yukon Ltd. - 90%	01/05/2008	20/03/2016	Active	105K16	1500120307
Mayo	YC67857	Quartz	B	82	18526 Yukon Inc. - 10%, Overland Resources Yukon Ltd. - 90%	01/05/2008	20/03/2016	Active	105K16	1500120308
Mayo	YC67858	Quartz	B	83	18526 Yukon Inc. - 10%, Overland Resources Yukon Ltd. - 90%	01/05/2008	20/03/2016	Active	105K16	1500120309
Mayo	YC67859	Quartz	B	84	18526 Yukon Inc. - 10%, Overland Resources Yukon Ltd. - 90%	01/05/2008	20/03/2016	Active	105K16	1500120310
Mayo	YC67860	Quartz	B	85	18526 Yukon Inc. - 10%, Overland Resources Yukon Ltd. - 90%	01/05/2008	20/03/2016	Active	105K16	1500120311
Mayo	YC67861	Quartz	B	86	18526 Yukon Inc. - 10%, Overland Resources Yukon Ltd. - 90%	01/05/2008	20/03/2016	Active	105K16	1500120312
Mayo	YC67862	Quartz	B	87	18526 Yukon Inc. - 10%, Overland Resources Yukon Ltd. - 90%	01/05/2008	20/03/2016	Active	105K16	1500120313
Mayo	YC67863	Quartz	B	88	18526 Yukon Inc. - 10%, Overland Resources Yukon Ltd. - 90%	01/05/2008	20/03/2016	Active	105K16	1500120314
Mayo	YC67864	Quartz	B	89	18526 Yukon Inc. - 10%, Overland Resources Yukon Ltd. - 90%	01/05/2008	20/03/2016	Active	105K16	1500120315
Mayo	YC67865	Quartz	B	90	18526 Yukon Inc. - 10%, Overland Resources Yukon Ltd. - 90%	01/05/2008	20/03/2016	Active	105K16	1500120316
Mayo	YC67866	Quartz	B	91	18526 Yukon Inc. - 10%, Overland Resources Yukon Ltd. - 90%	01/05/2008	20/03/2016	Active	105K16	1500120317
Mayo	YC67867	Quartz	B	92	18526 Yukon Inc. - 10%, Overland Resources Yukon Ltd. - 90%	01/05/2008	20/03/2016	Active	105K16	1500120318
Mayo	YC67868	Quartz	B	93	18526 Yukon Inc. - 10%, Overland Resources Yukon Ltd. - 90%	01/05/2008	20/03/2016	Active	105K16	1500120319

Mayo	YC67869	Quartz	B	94	18526 Yukon Inc. - 10%, Overland Resources Yukon Ltd. - 90%	01/05/2008	20/03/2016	Active	105K16	1500120320
Mayo	YC67870	Quartz	B	95	18526 Yukon Inc. - 10%, Overland Resources Yukon Ltd. - 90%	01/05/2008	20/03/2016	Active	105K16	1500120321
Mayo	YC67871	Quartz	B	96	18526 Yukon Inc. - 10%, Overland Resources Yukon Ltd. - 90%	01/05/2008	20/03/2016	Active	105K16	1500120322
Mayo	YC67872	Quartz	B	97	18526 Yukon Inc. - 10%, Overland Resources Yukon Ltd. - 90%	01/05/2008	20/03/2016	Active	105K16	1500120323
Mayo	YC67873	Quartz	B	98	18526 Yukon Inc. - 10%, Overland Resources Yukon Ltd. - 90%	01/05/2008	20/03/2016	Active	105K16	1500120324
Mayo	YC67874	Quartz	B	99	18526 Yukon Inc. - 10%, Overland Resources Yukon Ltd. - 90%	01/05/2008	20/03/2016	Active	105K16	1500120325
Mayo	YC67875	Quartz	B	100	18526 Yukon Inc. - 10%, Overland Resources Yukon Ltd. - 90%	01/05/2008	20/03/2016	Active	105K16	1500120326
Mayo	YC67880	Quartz	B	105	18526 Yukon Inc. - 10%, Overland Resources Yukon Ltd. - 90%	01/05/2008	20/03/2016	Active	105K16	1500120331
Mayo	YC67881	Quartz	B	106	18526 Yukon Inc. - 10%, Overland Resources Yukon Ltd. - 90%	01/05/2008	20/03/2016	Active	105K16	1500120332
Mayo	YC67882	Quartz	B	107	18526 Yukon Inc. - 10%, Overland Resources Yukon Ltd. - 90%	01/05/2008	20/03/2016	Active	105K16	1500120333
Mayo	YC67883	Quartz	B	108	18526 Yukon Inc. - 10%, Overland Resources Yukon Ltd. - 90%	01/05/2008	20/03/2016	Active	105K16	1500120334
Mayo	YC67884	Quartz	B	109	18526 Yukon Inc. - 10%, Overland Resources Yukon Ltd. - 90%	01/05/2008	20/03/2016	Active	105N1	1500120335
Mayo	YC67885	Quartz	B	110	18526 Yukon Inc. - 10%, Overland Resources Yukon Ltd. - 90%	01/05/2008	20/03/2016	Active	105N1	1500120336
Mayo	YC67886	Quartz	B	111	18526 Yukon Inc. - 10%, Overland Resources Yukon Ltd. - 90%	01/05/2008	20/03/2016	Active	105N1	1500120337
Mayo	YC67887	Quartz	B	112	18526 Yukon Inc. - 10%, Overland Resources Yukon Ltd. - 90%	01/05/2008	20/03/2016	Active	105N1	1500120338
Mayo	YC67888	Quartz	B	113	18526 Yukon Inc. - 10%, Overland Resources Yukon Ltd. - 90%	01/05/2008	20/03/2016	Active	105N1	1500120339

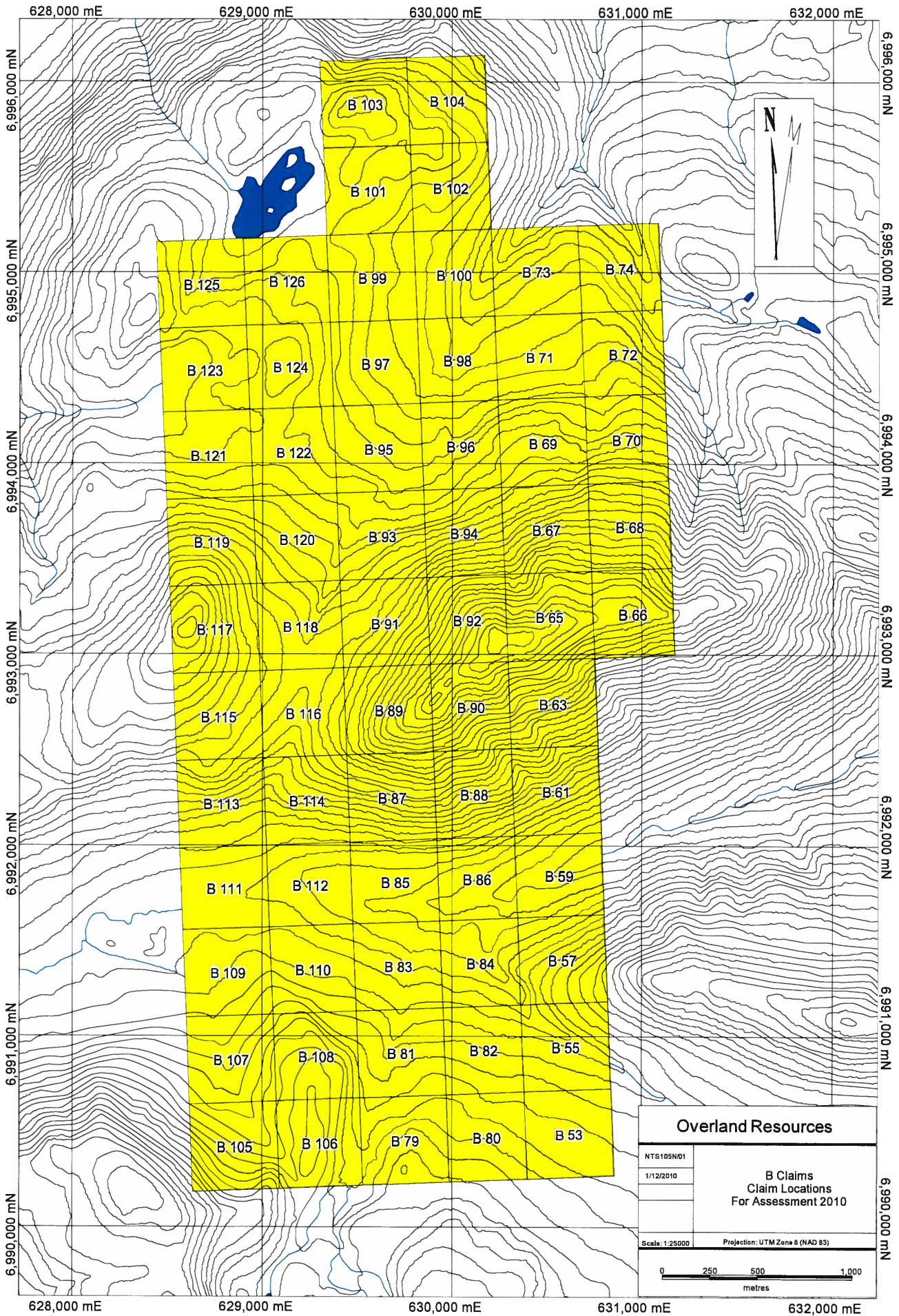
Mayo	YC67889	Quartz	B	114	18526 Yukon Inc. - 10%, Overland Resources Yukon Ltd. - 90%	01/05/2008	20/03/2016	Active	105N1	1500120340
Mayo	YC67890	Quartz	B	115	18526 Yukon Inc. - 10%, Overland Resources Yukon Ltd. - 90%	01/05/2008	20/03/2016	Active	105N1	1500120341
Mayo	YC67891	Quartz	B	116	18526 Yukon Inc. - 10%, Overland Resources Yukon Ltd. - 90%	01/05/2008	20/03/2016	Active	105N1	1500120342
Mayo	YC67892	Quartz	B	117	18526 Yukon Inc. - 10%, Overland Resources Yukon Ltd. - 90%	01/05/2008	20/03/2016	Active	105N1	1500120343
Mayo	YC67893	Quartz	B	118	18526 Yukon Inc. - 10%, Overland Resources Yukon Ltd. - 90%	01/05/2008	20/03/2016	Active	105N1	1500120344
Mayo	YC67894	Quartz	B	119	18526 Yukon Inc. - 10%, Overland Resources Yukon Ltd. - 90%	01/05/2008	20/03/2016	Active	105N1	1500120345
Mayo	YC67895	Quartz	B	120	18526 Yukon Inc. - 10%, Overland Resources Yukon Ltd. - 90%	01/05/2008	20/03/2016	Active	105N1	1500120346
Mayo	YC67896	Quartz	B	121	18526 Yukon Inc. - 10%, Overland Resources Yukon Ltd. - 90%	01/05/2008	20/03/2016	Active	105N1	1500120347
Mayo	YC67897	Quartz	B	122	18526 Yukon Inc. - 10%, Overland Resources Yukon Ltd. - 90%	01/05/2008	20/03/2016	Active	105N1	1500120348
Mayo	YC67898	Quartz	B	123	18526 Yukon Inc. - 10%, Overland Resources Yukon Ltd. - 90%	01/05/2008	20/03/2016	Active	105N1	1500120349
Mayo	YC67899	Quartz	B	124	18526 Yukon Inc. - 10%, Overland Resources Yukon Ltd. - 90%	01/05/2008	20/03/2016	Active	105N1	1500120350
Mayo	YC67900	Quartz	B	125	18526 Yukon Inc. - 10%, Overland Resources Yukon Ltd. - 90%	01/05/2008	20/03/2016	Active	105N1	1500120351
Mayo	YC67901	Quartz	B	126	18526 Yukon Inc. - 10%, Overland Resources Yukon Ltd. - 90%	01/05/2008	20/03/2016	Active	105N1	1500120352

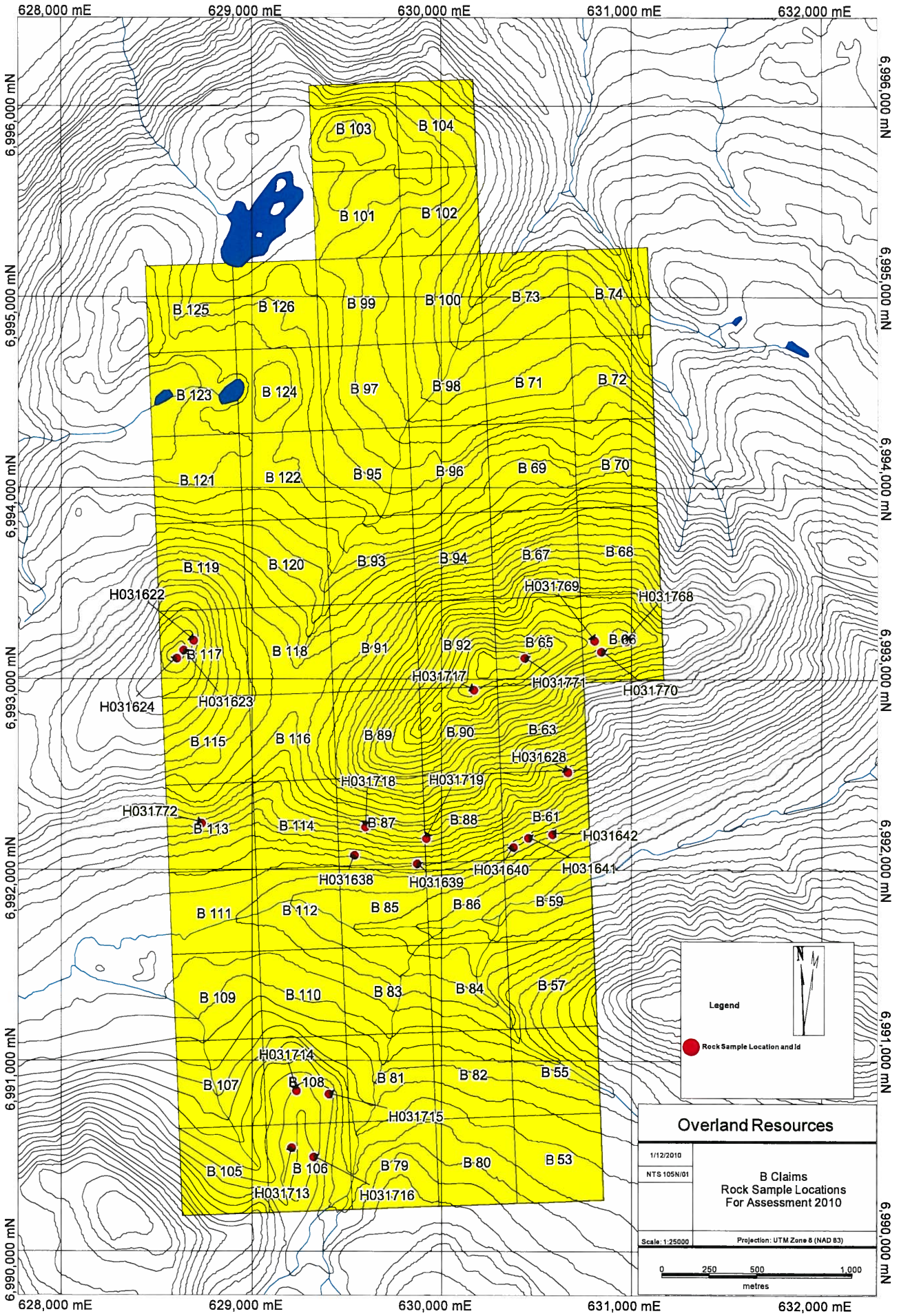
Appendix C: Statement of Expenditures

Overland Resources Yukon Limited**B Blocks (60 claims)**

	Units	Cost/unit	Costs
Stream Sampling			
Alex Tolson (days)	1	375.00	375.00
Milada Pardovicova (days)	1	300.00	300.00
Payroll taxes (10%)			67.50
Helicopter (hrs)	1.50	1,050.00	1,575.00
Fuel (liters) - Jet Ranger	180.00	3.34	600.50
Assays			
sample prep/analysis (unit)	3	37.00	111.00
Courier costs			40.00
Camp costs (man day)	2	50.00	100.00
Other Costs			
Communication (per day cost)	1	20.00	20.00
General Transportation			1,500.00
Soils Sampling			
Cory Redmond (days)	4	250.00	1,000.00
Milada Pardovicova (days)	4	300.00	1,200.00
Anna Crawford (days)	4	300.00	1,200.00
Payroll taxes (10%)			340.00
Helicopter (hrs)	12.00	1,050.00	12,600.00
Fuel (liters) - Jet Ranger	1,440.00	3.34	4,804.00
Assays			
sample prep/analysis (unit)	91	27.00	2,457.00
Courier costs			120.00
Camp costs (man day)	12	50.00	600.00
Other Costs			
Communication (per day cost)	6	20.00	120.00
General Transportation			3,000.00
Prospecting			
Alex Tolson (days)	2	375.00	750.00
Rebecca Smart (days)	4	325.00	1,300.00
Anna Crawford (days)	3	300.00	900.00
Cory Redmond (days)	2	250.00	500.00
Milada Pardovicova (days)	1	300.00	300.00
Payroll taxes (10%)			375.00
Helicopter (hrs)	8.00	1,050.00	8,400.00
Fuel (liters) - Jet Ranger	960.00	3.34	3,202.67
Assays			
sample prep/analysis (unit)	21	37.00	777.00
Courier costs			40.00
Camp costs (man day)	12	50.00	600.00
Other Costs			
Communication (per day cost)	6	20.00	120.00
General Transportation			3,000.00
			<u>52,394.68</u>

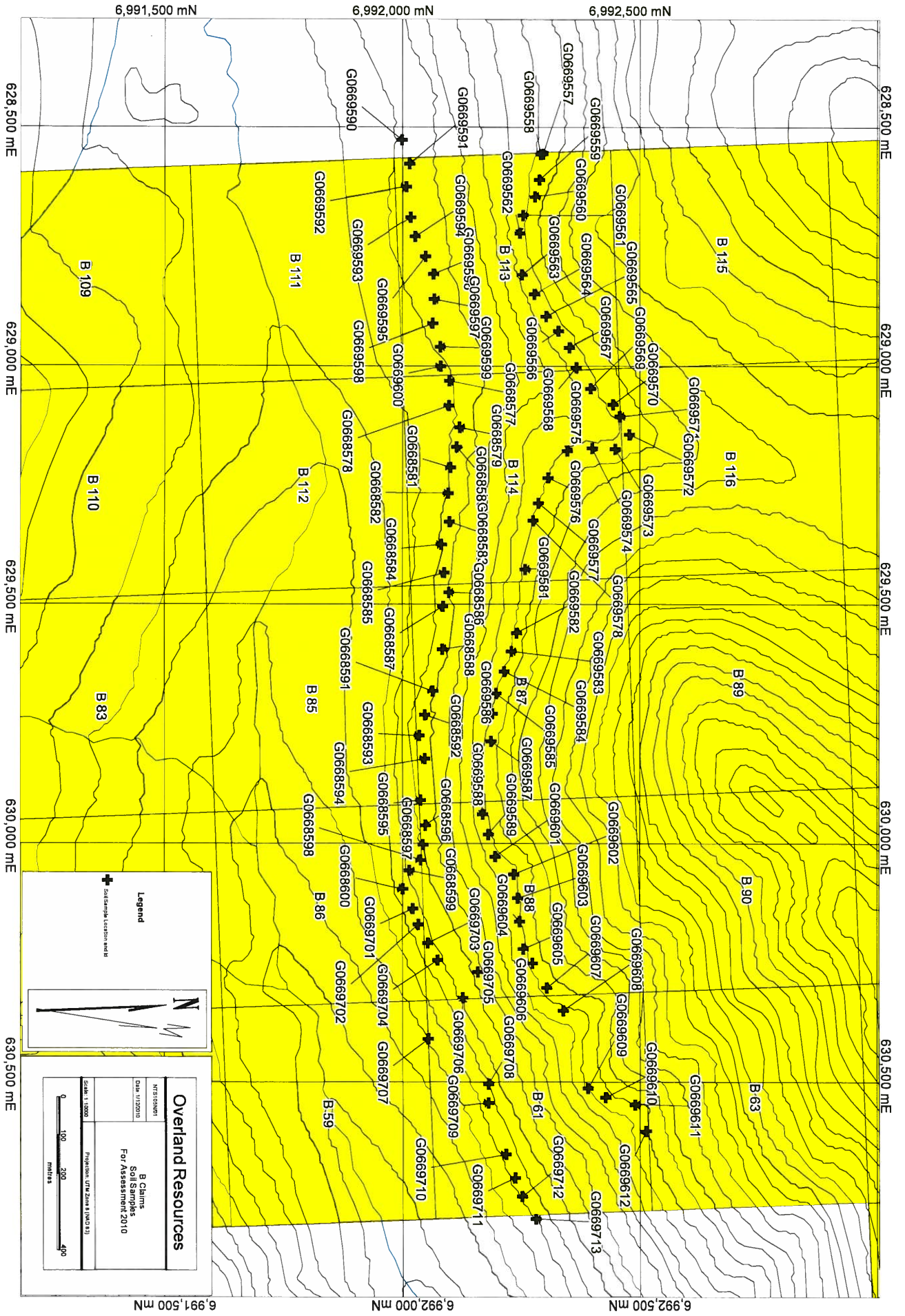
Appendix D: Maps





Overland Resources

1/12/2010	B Claims Rock Sample Locations For Assessment 2010
NTS 105N/01	
Scale: 1:25000	Projection: UTM Zone 8 (NAD 83)



Legend

Soil Sample Location Mark

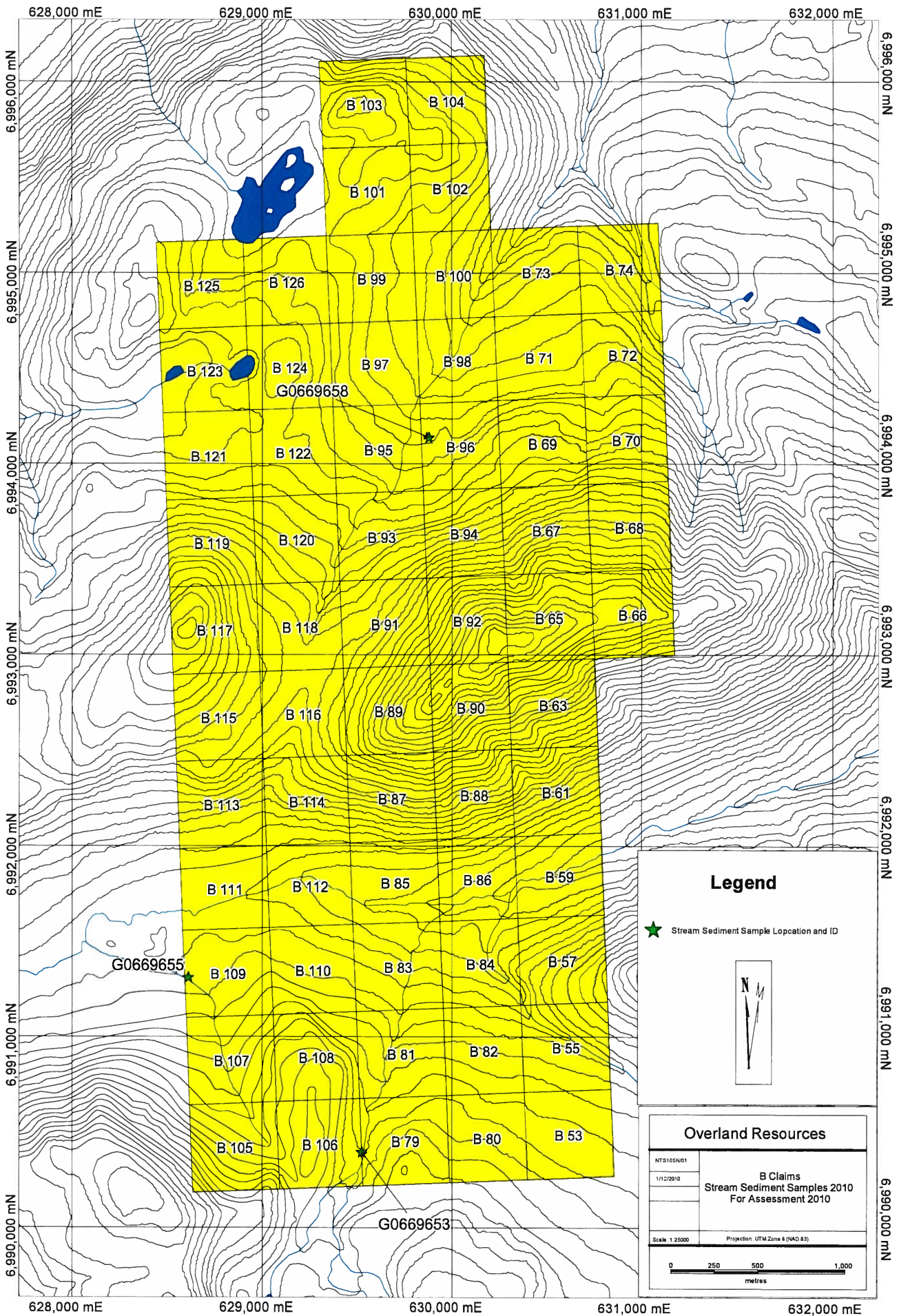
Overland Resources

INSTRUMENT: Data 11/20/10

PROJECT: B Claims Soil Samples For Assessment 2010

SCALE: 1:10000

PROJECTION: UTM Zone 8 (NAD 83)



Legend

★ Stream Sediment Sample Location and ID



Overland Resources

NTS10EN01	B Claims Stream Sediment Samples 2010 For Assessment 2010
1/12/2010	
Scale: 1:25000 Projection: UTM Zone 8 (NAD 83)	