

**Assessment Report
Summary of Geological Investigations Conducted in 2010**

Property: PUP

Grant Numbers: YD 08211-08246

Location: NW Corner 7099200N/582300W
SW Corner 7096300/582300W
SE Corner 7099200N/585100W
NE Corner 7098800N/585700W
(approximate UTM Coordinates)

NTS Map Sheet: 1150 14/116B 03

Register Owner and Operator: Castillian Resources Corp.

For Work Performed August 2010

Addresses:

Whitehorse Branch Office:

3151B 3rd Ave
Whitehorse, YT
Y1A 1G1

Headquarters:

65 Queen Street West, Suite 800
Toronto, ON
M5H 2M5

Submitted to:

Dawson Mining District – Mining Recorder
Yukon Department of Energy, Mines and Resources
1242 Front St., P.O. Box 249, Dawson City, YT Y0B 1G0

Author:

Mr. Kevin Brewer, Project Manager
P.Geo., M.B.A., B.Sc (Hons)
3151 B, 3rd Ave, Whitehorse, YT Y1A 1G1

April 15, 2011.



Table of Contents

	Page
Introduction	3
Project Objectives	3
Exploration History	3
List of Claims	4
Regional Geology	4
Local Geology	6
Exploration Work Completed	7
Interpretation and Recommendation	7
Appendices	
1. Claim Map, Sample Location Map and Assays	
2. Statement of Qualifications – Kevin Brewer, P. Geo.	
3. Statement of Expenditures	
4. References	

Introduction

Castillian Resources Corp. completed preliminary reconnaissance of the Pure Gold Property (PUP claims) during 2010 and also completed extensive research of any documentation relating to previous exploration efforts on the property in order to prepare for the 2010 field season. This report is a brief summary of work completed to date and is being filed with the Mining Recorder - Dawson Mining District Office for property assessment purposes.

Project Objectives

Property reconnaissance was completed on

- Identify the location of any known mineral occurrences and document the nature of the occurrence and conduct sampling;
- Determine the nature of the property including topography, creek conditions (for possible water sources), potential camp locations, landing sites, and overall work conditions for future planning purposes; and,
- Confirm the geology of the property as previously mapped by the Geological Survey of Canada.

Location, Exploration and Mapping History

The Pure Gold Property area comprises of 46 claims located in the historic Klondike Gold Fields, at the headwaters of the Pure Gold Gulch Creek, 18 kilometers southeast of Dawson City, Yukon (see Figures 1-4). The property occupies the high ground to the immediate east of Bonanza Creek, the most productive placer gold creek on the Klondike from which has been recovered in excess of 4 million ounces of gold (see figure 5). The areas has not had much exploration activity except for regional mapping surveys conducted by government geological survey mapping efforts.

List of Claims

Please refer to Table 1 and Figure 1.

Regional Geology

Metasiliciclastic rocks are widespread, and dominated by psammite and quartzite, with lesser pelites and rare conglomerate. These were thought to be as old as late Proterozoic (e.g. Tempelman-Kluit, 1974); however, preliminary detrital zircon geochronology and geochronology for plutonic rocks suggest a middle Paleozoic age (M. Villeneuve, Geological Survey of Canada, in preparation). Intermediate to mafic composition amphibolite interdigitates with, and lies stratigraphically above, the siliciclastic rocks. Although intensely tectonized, heterogeneous compositional layering and local vestiges of primary textures in the amphibolite, such as breccia clasts and pillow selvages,

Table 1.

District	GrantNuml	RegType	ClaimName	ClaimNbr	ClaimOwner	Status
Dawson	YD08201	Quartz	Pup	1	Castillian Resources Corp. - 100%	Active
Dawson	YD08202	Quartz	Pup	2	Castillian Resources Corp. - 100%	Active
Dawson	YD08203	Quartz	Pup	3	Castillian Resources Corp. - 100%	Active
Dawson	YD08204	Quartz	Pup	4	Castillian Resources Corp. - 100%	Active
Dawson	YD08205	Quartz	Pup	5	Castillian Resources Corp. - 100%	Active
Dawson	YD08206	Quartz	Pup	6	Castillian Resources Corp. - 100%	Active
Dawson	YD08207	Quartz	Pup	7	Castillian Resources Corp. - 100%	Active
Dawson	YD08208	Quartz	Pup	8	Castillian Resources Corp. - 100%	Active
Dawson	YD08209	Quartz	Pup	9	Castillian Resources Corp. - 100%	Active
Dawson	YD08210	Quartz	Pup	10	Castillian Resources Corp. - 100%	Active
Dawson	YD08211	Quartz	Pup	11	Castillian Resources Corp. - 100%	Active
Dawson	YD08212	Quartz	Pup	12	Castillian Resources Corp. - 100%	Active
Dawson	YD08213	Quartz	Pup	13	Castillian Resources Corp. - 100%	Active
Dawson	YD08214	Quartz	Pup	14	Castillian Resources Corp. - 100%	Active
Dawson	YD08215	Quartz	Pup	15	Castillian Resources Corp. - 100%	Active
Dawson	YD08216	Quartz	Pup	16	Castillian Resources Corp. - 100%	Active
Dawson	YD08217	Quartz	Pup	17	Castillian Resources Corp. - 100%	Active
Dawson	YD08218	Quartz	Pup	18	Castillian Resources Corp. - 100%	Active
Dawson	YD08219	Quartz	Pup	19	Castillian Resources Corp. - 100%	Active
Dawson	YD08220	Quartz	Pup	20	Castillian Resources Corp. - 100%	Active
Dawson	YD08221	Quartz	Pup	21	Castillian Resources Corp. - 100%	Active
Dawson	YD08222	Quartz	Pup	22	Castillian Resources Corp. - 100%	Active
Dawson	YD08223	Quartz	Pup	23	Castillian Resources Corp. - 100%	Active
Dawson	YD08224	Quartz	Pup	24	Castillian Resources Corp. - 100%	Active
Dawson	YD08225	Quartz	Pup	25	Castillian Resources Corp. - 100%	Active
Dawson	YD08226	Quartz	Pup	26	Castillian Resources Corp. - 100%	Active
Dawson	YD08227	Quartz	Pup	27	Castillian Resources Corp. - 100%	Active
Dawson	YD08228	Quartz	Pup	28	Castillian Resources Corp. - 100%	Active
Dawson	YD08229	Quartz	Pup	29	Castillian Resources Corp. - 100%	Active
Dawson	YD08230	Quartz	Pup	30	Castillian Resources Corp. - 100%	Active
Dawson	YD08231	Quartz	Pup	31	Castillian Resources Corp. - 100%	Active
Dawson	YD08232	Quartz	Pup	32	Castillian Resources Corp. - 100%	Active
Dawson	YD08233	Quartz	Pup	33	Castillian Resources Corp. - 100%	Active
Dawson	YD08234	Quartz	Pup	34	Castillian Resources Corp. - 100%	Active
Dawson	YD08235	Quartz	Pup	35	Castillian Resources Corp. - 100%	Active
Dawson	YD08236	Quartz	Pup	36	Castillian Resources Corp. - 100%	Active
Dawson	YD08237	Quartz	Pup	37	Castillian Resources Corp. - 100%	Active
Dawson	YD08238	Quartz	Pup	38	Castillian Resources Corp. - 100%	Active
Dawson	YD08239	Quartz	Pup	39	Castillian Resources Corp. - 100%	Active
Dawson	YD08240	Quartz	Pup	40	Castillian Resources Corp. - 100%	Active
Dawson	YD08241	Quartz	Pup	41	Castillian Resources Corp. - 100%	Active
Dawson	YD08242	Quartz	Pup	42	Castillian Resources Corp. - 100%	Active
Dawson	YD08243	Quartz	Pup	43	Castillian Resources Corp. - 100%	Active
Dawson	YD08244	Quartz	Pup	44	Castillian Resources Corp. - 100%	Active
Dawson	YD08245	Quartz	Pup	45	Castillian Resources Corp. - 100%	Active
Dawson	YD08246	Quartz	Pup	46	Castillian Resources Corp. - 100%	Active

NTS MapNumber

115O14

115O14

115O14

115O14

115O14

115O14

115O14

115O14

115O14

115O14

115O14

115O14

115O14

115O14

115O14

115O14

115O14

115O14

116B03

116B03

116B03

116B03

116B03

116B03

116B03

116B03

116B03

115O14

115O14

115O14

115O14

115O14

115O14

115O14

115O14

116B03

116B03

116B03

116B03

116B03

116B03

116B03

116B03

116B03

116B03

116B03

116B03

Figure 1.

Pure Gold "PUP" Claims



Legend

Yukon Border - Surveyed
National Road Network - All Roads

- Expressway / Highway
- Arterial
- Collector
- Ramp
- Resource / Recreation
- Local / Street
- Local / Strata
- Local / Unknown
- Alley or Service Lane
- Service Lane
- Winter

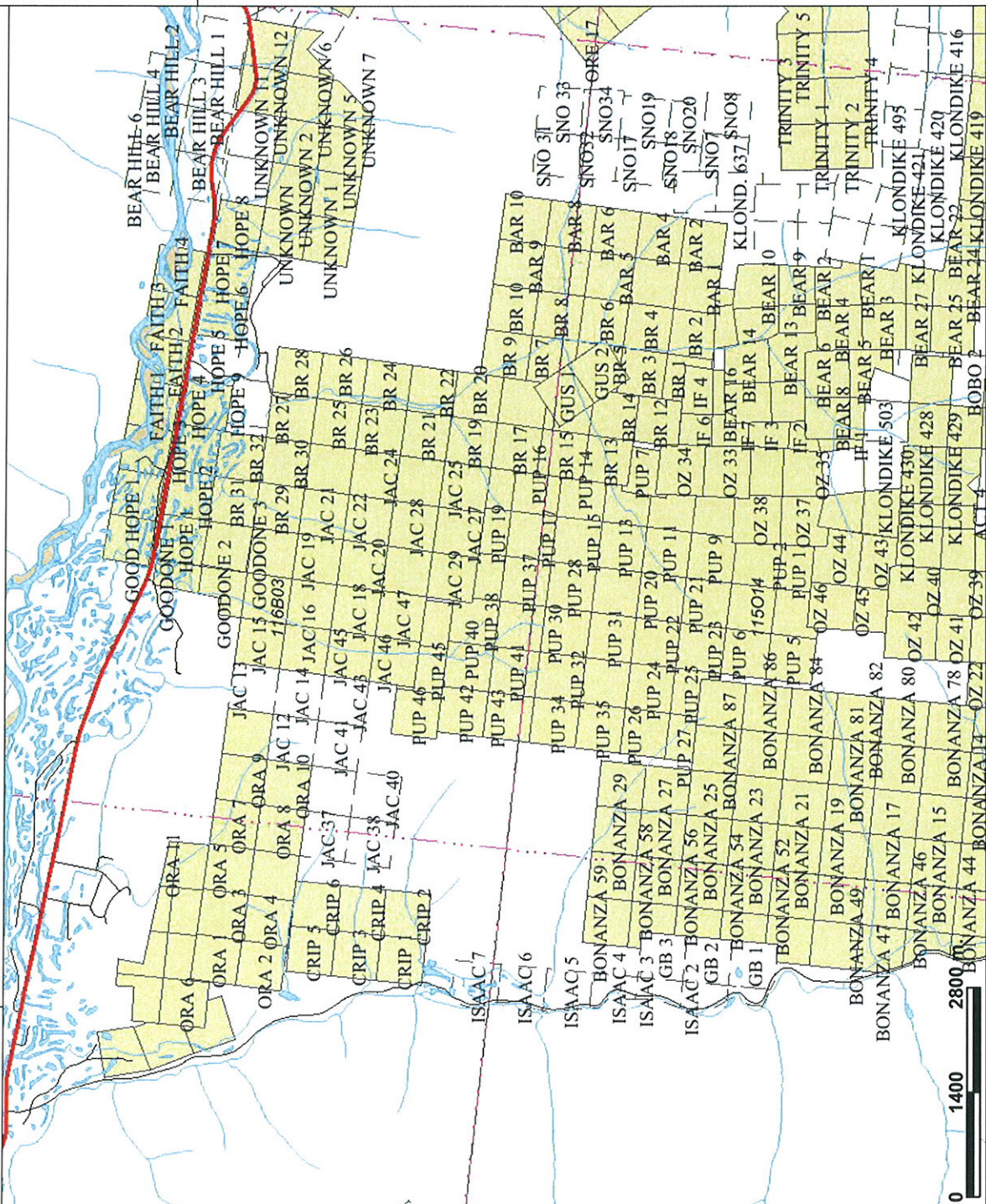
- Waterbodies (50K)
- Dry river bed
- Navigable canal
- Sand
- Water disturbance
- Waterbody
- Waterbody
- Places (All)

- City
- Town
- Municipality
- Village
- Community
- Settlement
- Native Settle
- Hamlet
- Historic Site
- Quartz Claims2

- Active
- Expired



Scale: 1:80,607



0 1400 2800

This map is a user generated static output from an Internet mapping site and is for general reference only. Data layers that appear on this map may or may not be accurate, current, or otherwise reliable. THIS MAP IS NOT TO BE USED FOR NAVIGATION.
Date Printed: 16-Apr-2010 12:20:00 PM

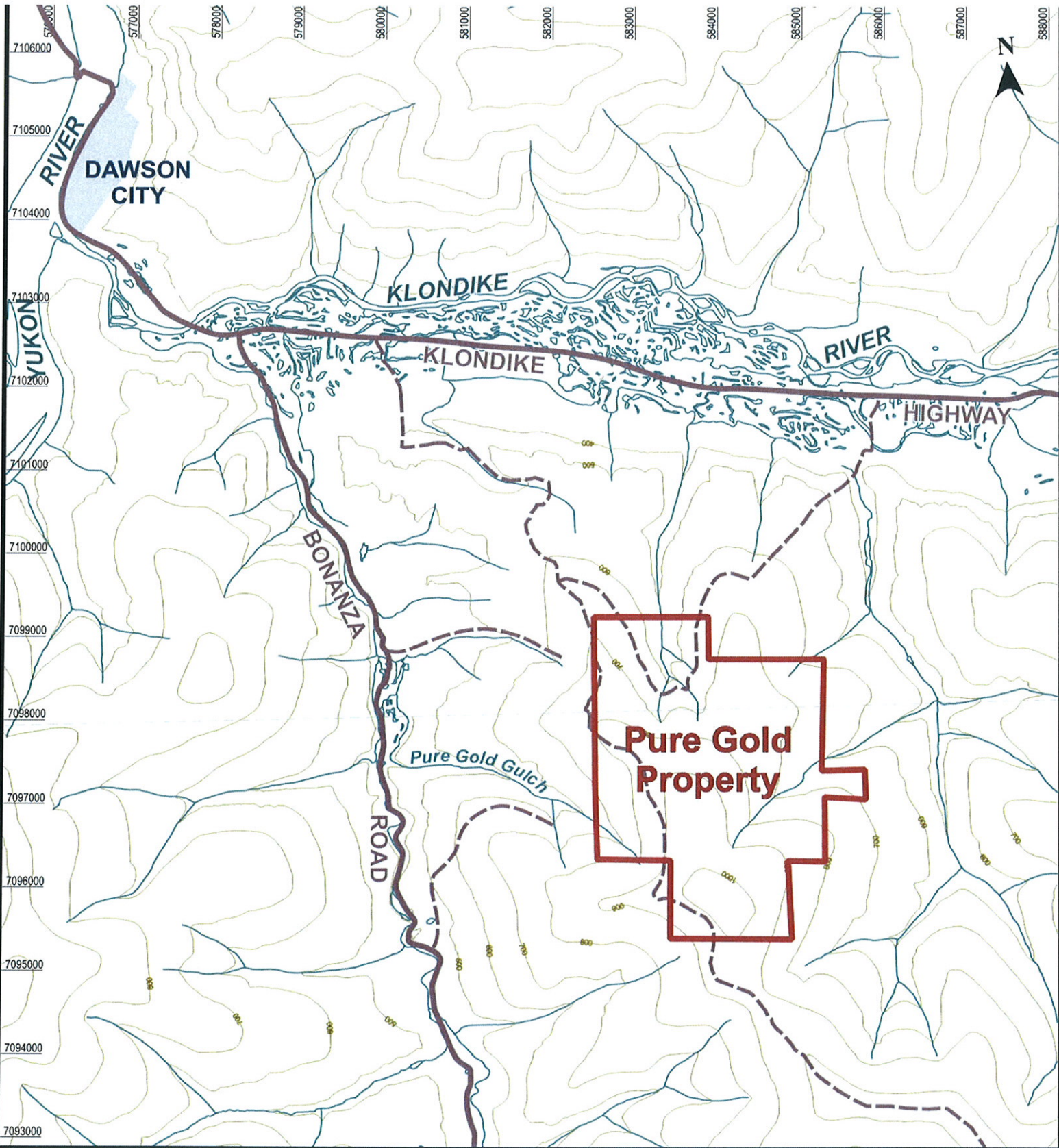


Figure 2.

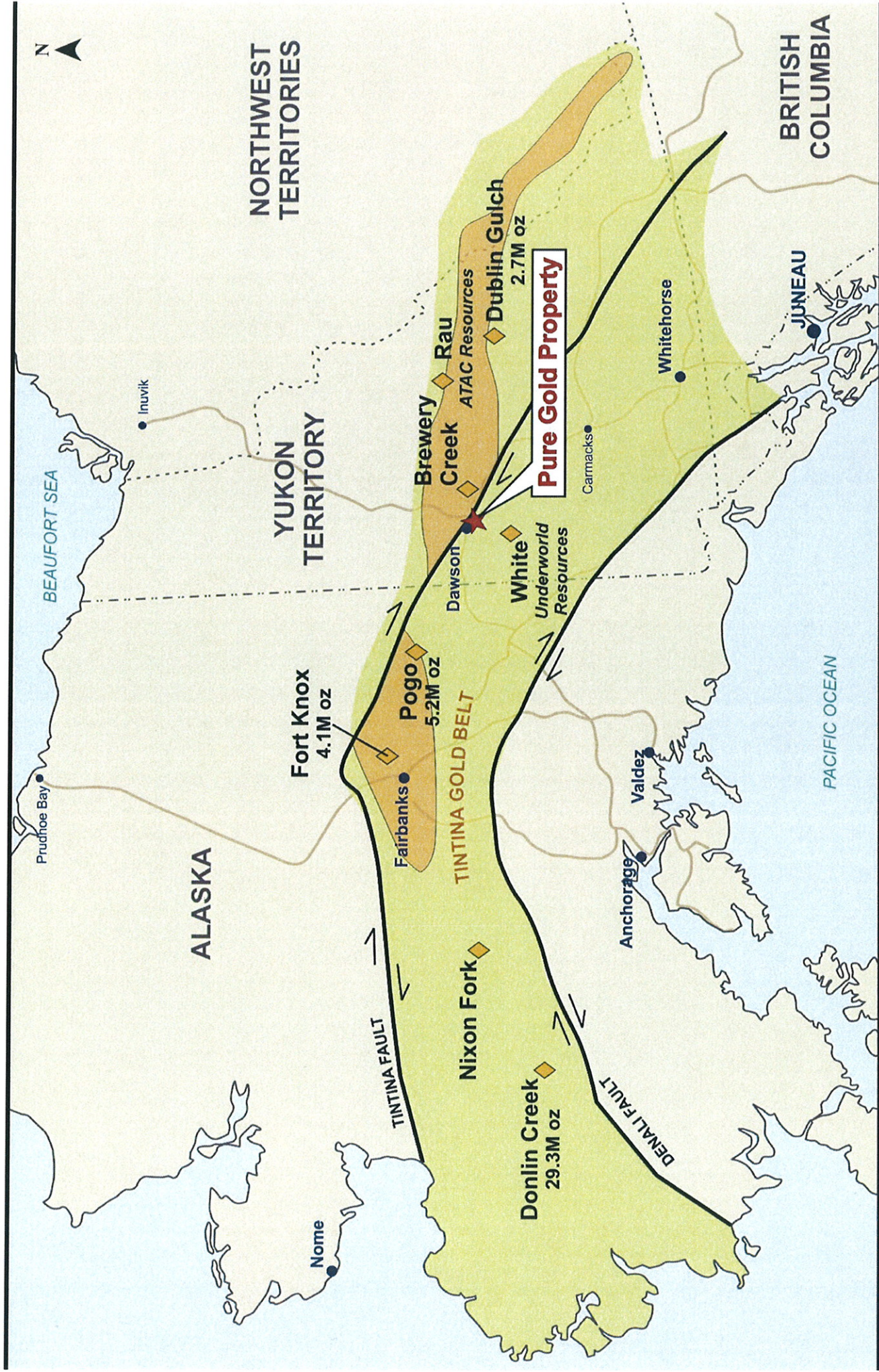


LEGEND

- Property Outline
- Highway
- - - Trails
- Rivers and Creeks
- Contours



**PURE GOLD
PROPERTY MAP**



TINTINA GOLD BELT
Figure 3.

Figure 4.

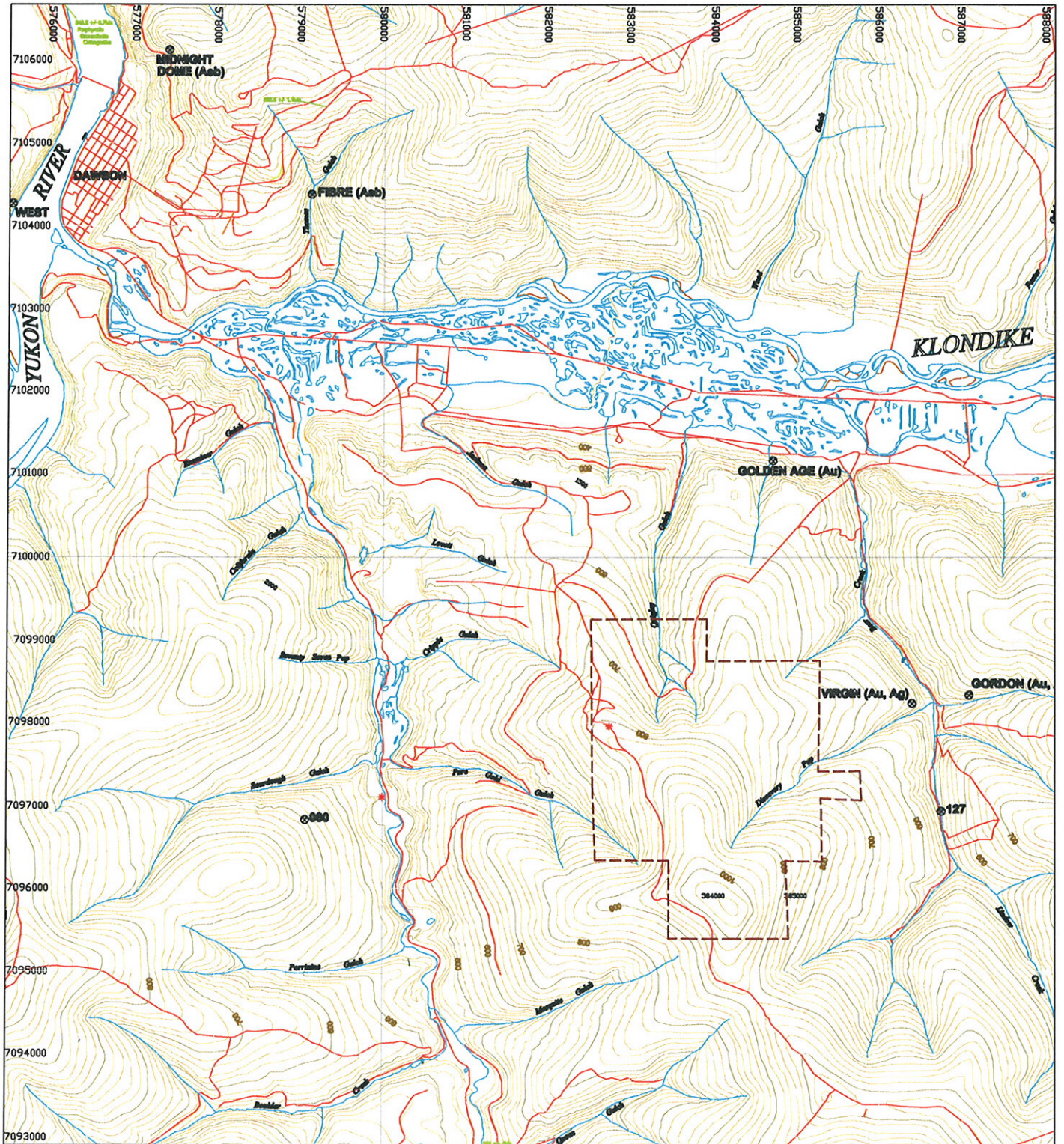
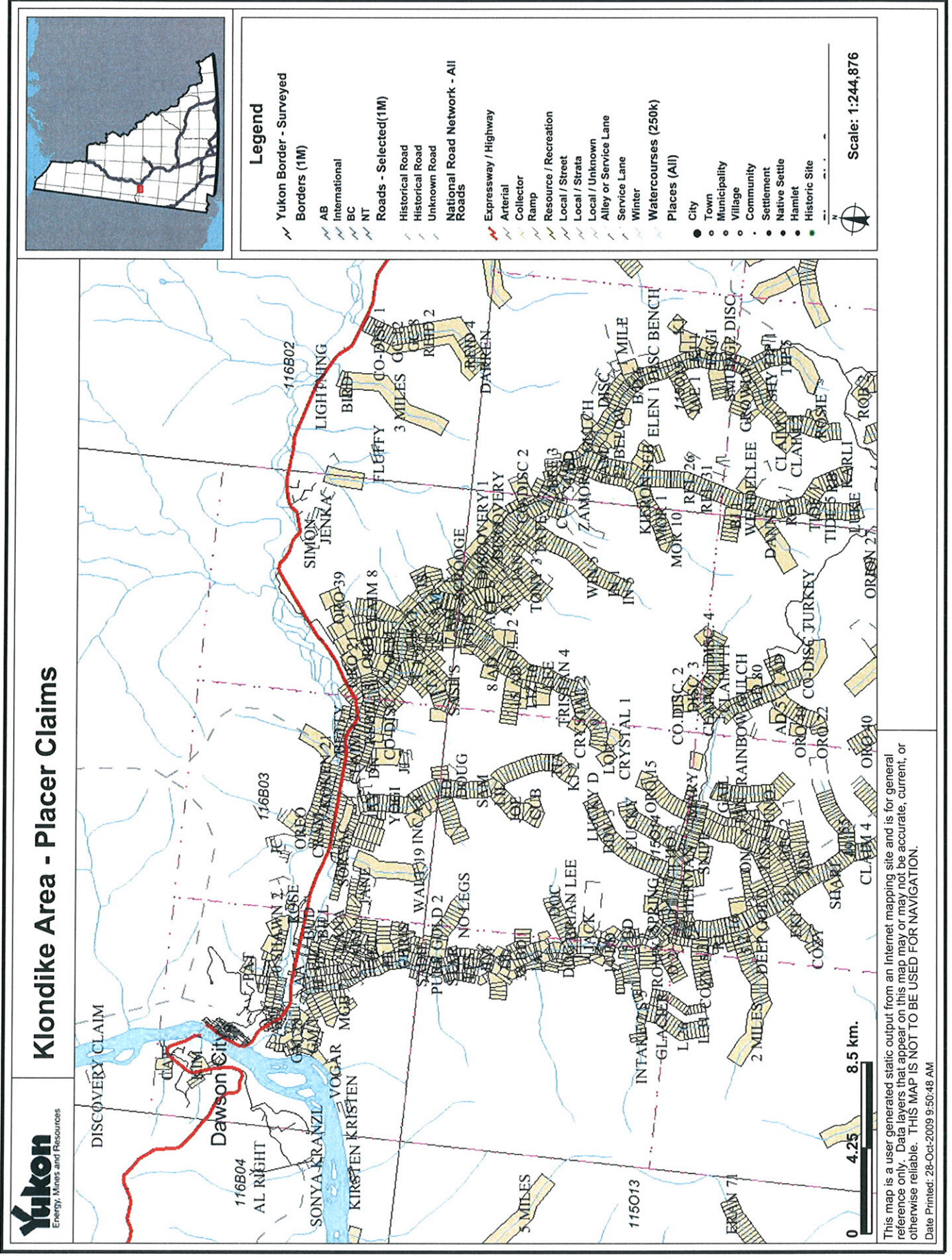


Figure 5.



indicate derivation from volcanic and volcanoclastic rocks. Marble horizons occur within the amphibolite, as well as the siliciclastic rocks. In turn, dark carbonaceous quartzite, metapelite and minor marble of the Nasina assemblage, markedly sparse in volcanic-derived material, lies structurally above and/or may be partly equivalent to the aforementioned metaclastic rocks. Abundant orthogneiss bodies with diorite, tonalite, granodiorite, monzogranite and granite protoliths, intrude the above assemblages. Some are Devonian-Mississippian in age, whereas others are known to be Permian. For many others, the age is probably one of these, yet remains unclear. The tectonic significance of ultramafic and gabbroic rocks that lie near the boundary between the siliciclastic and metavolcanic-metavolcanoclastic successions is also unclear.

In summary, the extensive metaplutonic and metavolcanic rocks represent two periods of arc activity. The older arc, built upon a siliciclastic foundation, largely comprises Devonian-Mississippian amphibolite associated with coeval widespread tonalitic orthogneiss that formed its subvolcanic intrusive complex. A Permian arc, built upon the previous, is represented by granitic orthogneiss and coeval metavolcanics.

Local Geology

The Pure Gold Property lies within the Yukon-Tanana Terrane and the northern boundary of the Tintina Gold Belt (see figure 3). Exposures comprise of grey gneiss.

Gold in the region is known to be hosted in quartz-albite-carbonate breccias with minor disseminated pyrite or in sucrosic multi-episodal quartz with abundant ankerite and quartz breccia stockwork which both host visible gold and pyrite. Siliceous zones tend to be hosted in completely altered, potassium feldspar-rich gneiss.

Based on a geological framework described by Ash (2009) target identification in the area should focus on identifying the possible existence of alteration sequences related to rocks of possible ophiolitic origin that have demonstrated in the region that they are prone to gold deposition.

Exploration Work Completed

The author visited the property in August 2010 and the field work was completed by Mr. Derek Torgerson, P. Geo. The property is readily accessible from Dawson City by ground and ATV's were used on several trails that traverse the property during work traverses. A complete reconnaissance of the property area was conducted.

Two soil grids were established (see Figure 6) in the southeastern and northwestern corners of the property.

A total of 55 soil samples were collected in the southeastern grid at 50 meters intervals on a grid spacing of 100 meters. A total of 55 soil samples were also collected in the northwestern grid at 50 meters intervals on a grid spacing of 100 meters (see sample

Figure 6.

Legend

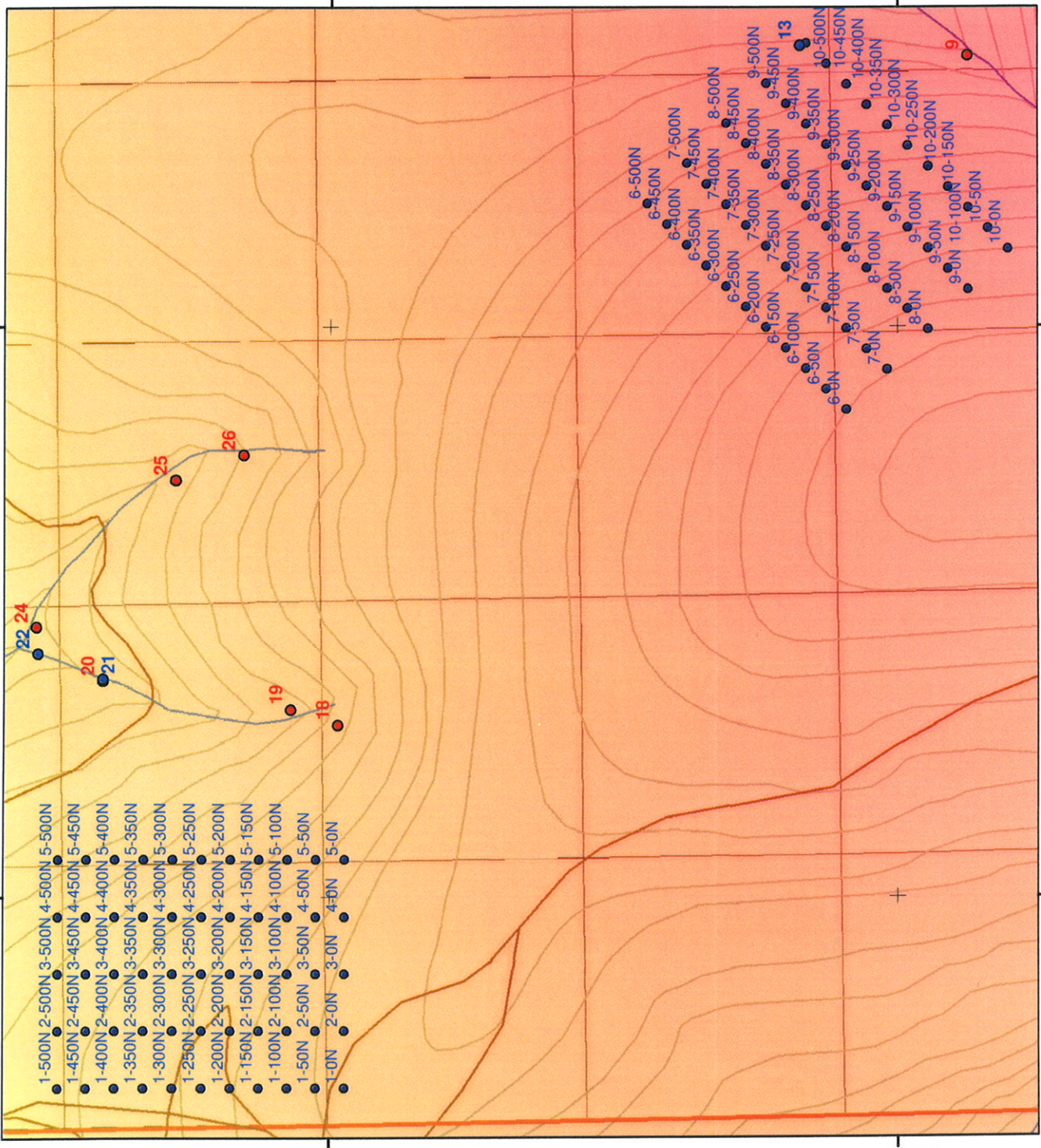
- 2010_Rock_Samples
- 2010_Sed_Samples
- 2010_soil_grids

200m - MAG - Residual Total Field

Value

High : 1642.38

Low : 31.0257



584000

583000

7098000

7097000

584000

583000

**Sample Location Map, Soil Grids,
200m Aeromag**
1:10,000



<Double-Click to add Text>

Drawn By:

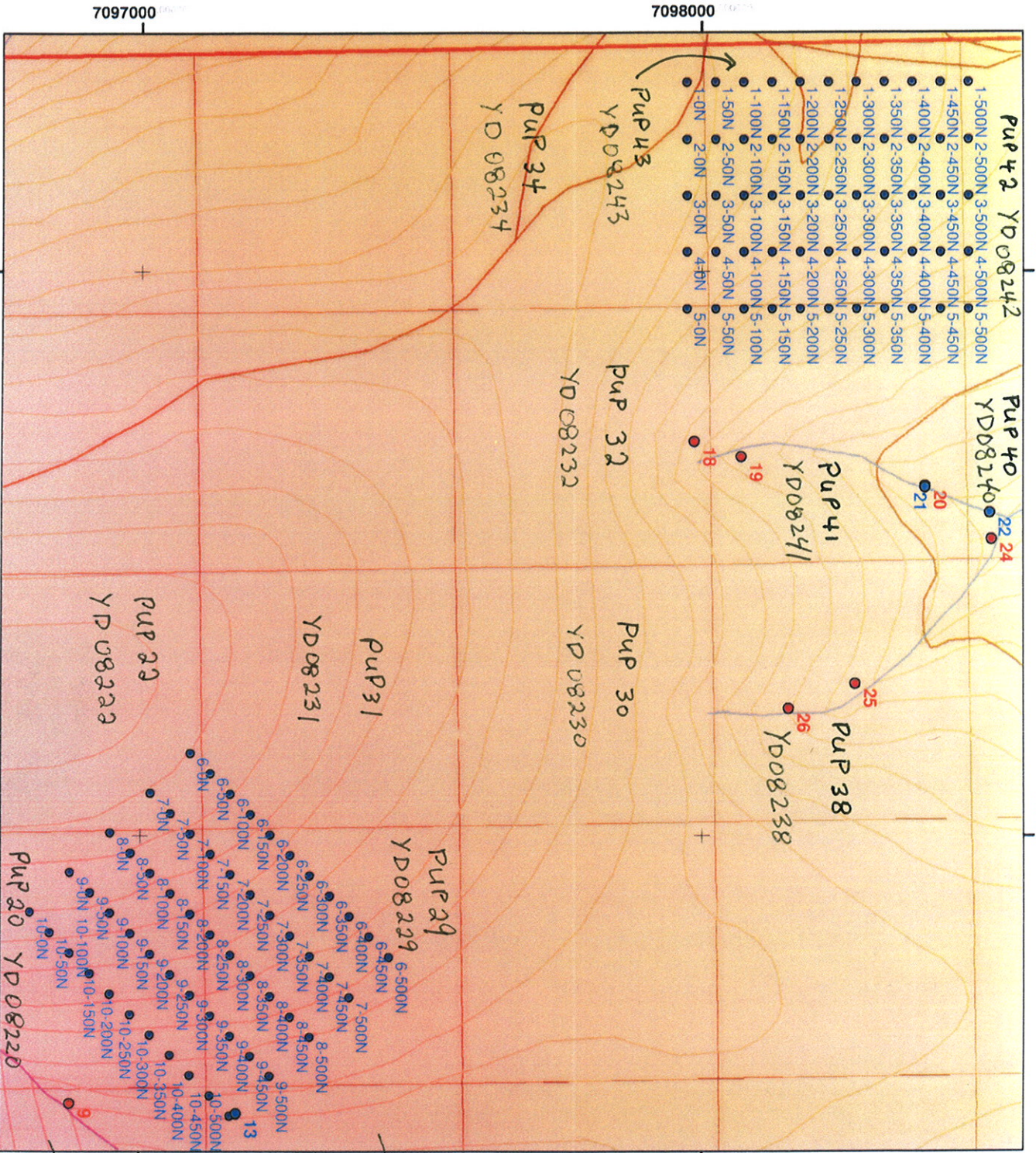
Checked by:

Date:

Sheet No.

<Double-Click to Add Map Number>

Figure 7
 Work areas with
 claims and grant
 numbers



Sample Location Map, Soil Grids,
 200m Aeromag
 1:10,000



<Double-Click to add Text>

Drawn By: _____

Checked By: _____

Date: _____

Sheet No. _____
 <Double-Click to Add Map Numbers>

location map – Figure 5 and associated assay results – Certificate of Analysis 10-360-02864-01 – Appendix 1). Sample results did not indicate any anomalous gold.

Rock samples (112) were also collected throughout the property area and 14 sediment samples. Associated assay results – Certificate of Analysis (10-360) 02724-01, 02723-01, 02882-01, 03187-01 (appendix 1) also did not indicate any anomalous gold.

Interpretation and Recommendation

It is recommended that no further work be conducted on the property.

Appendix 1.
Assays



INSPECTORATE

A B C D E F G H I J K L M N O P Q R S T U V W X Y Z

Certificate of Analysis

10-360-02862-01

Inspectorate America Corporation
#200 - 11620 Horseshoe Way
Richmond, British Columbia V7A 4V5 Canada
Phone: 604-272-7818

Distribution List

Attention: Kevin Brewer
3151BV 3rd Ave
Whitehorse, Yukon Y1A 1G1
Phone: 604-812-2863
EMail: kbrewer@largoresources.com

Attention: R. Cambell
EMail: rcambell@largoresources.com

Attention: Bill Pearson
EMail: bpearson@tucanoexploration.com

Submitted By: Castillian Resources Ltd.

3151BV 3rd Ave
Whitehorse, Yukon Y1A 1G1

Attention: Kevin Brewer

Project: PureGold


Description:

Samples	Type	Preparation Description
95	Rock	SP-RX-2K/Rock/Chips/Drill Core

Date Received: 09/14/2010
Date Completed: 09/30/2010
Invoice:

Method	Description
30-4A-TR	30 Element, 4 Acid, ICP, Trace Level
Au-1AT-AA	Au. 1AT Fire Assay, AAS

The results of this assay were based solely upon the content of the sample submitted. Any decision to invest should be made only after the potential investment value of the claim or deposit has been determined based on the results of assays of multiple samples of geologic materials collected by the prospective investor or by a qualified person selected by him and based on an evaluation of all engineering data which is available concerning any proposed project. For our complete terms and conditions please see our website at www.inspectorate.com.

By 
David Chiu, BC Certified Assayer



Certificate of Analysis

INSPECTORATE

#200 - 11620 Horseshoe Way
Richmond, British Columbia V7A 4V5
Canada

Castilian Resources Ltd.
3151BV 3rd Ave
Whitehorse, Yukon Y1A 1G1

Sample Description	Sample Type	Au ppb	Au-1AT-AA ppm	Ag ppm	Al %	As ppm	Ba ppm	Bi ppm	Cd ppm	Ce %	Co ppm	Cr ppm	Cu ppm	Fc %	K %	La ppm
		30-4A-TR	30-4A-TR	30-4A-TR	30-4A-TR	30-4A-TR	30-4A-TR	30-4A-TR	30-4A-TR	30-4A-TR	30-4A-TR	30-4A-TR	30-4A-TR	30-4A-TR	30-4A-TR	30-4A-TR
RZ-12	Rock	6	1.9	<5	5.63	<5	843	<2	<0.5	0.62	7	325	32	2.47	2.79	30
CC-1	Rock	115	2.1	<5	5.07	<5	2186	<2	<0.5	0.61	5	192	61	1.95	2.34	30
CC-2	Rock	43	1.2	<5	0.56	<5	391	<2	<0.5	0.04	2	135	7	0.45	0.13	<10
CC-3	Rock	7	1.9	<5	6.65	<5	1231	<2	<0.5	1.68	15	122	70	3.92	1.47	26
KS-1	Rock	11	40.5	<5	5.92	<5	1824	<2	<0.5	0.63	17	168	7424	4.53	2.15	40
KS-2	Rock	12	35.9	<5	3.22	<5	951	<2	<0.5	0.32	11	216	>10000	3.29	1.14	28
Cariboo	Rock	11	5.6	<5	7.39	<5	473	<2	<0.5	1.60	17	96	113	4.69	1.78	31
Crip 1	Rock	36	1.3	8	5.65	8	1697	<2	<0.5	0.09	4	128	7	1.48	1.76	33
Crip 2	Rock	<5	1.5	<5	6.47	<5	1791	<2	<0.5	0.10	3	111	6	0.92	1.90	24
Crip 3	Rock	8	1.0	52	4.29	52	346	<2	<0.5	0.62	3	192	5	1.21	0.32	21
Crip 4	Rock	7	1.5	<5	5.97	<5	1841	<2	<0.5	0.40	4	95	4	1.93	2.31	33
Crip 5	Rock	<5	1.4	<5	3.51	<5	355	<2	<0.5	0.08	3	181	7	0.82	0.34	11
Crip 6	Rock	17	2.2	7	5.33	7	4013	<2	<0.5	0.14	6	192	64	2.30	2.28	24
Crip 7	Rock	7	1.4	<5	5.64	<5	1750	<2	<0.5	0.16	3	100	6	1.17	1.96	16
Crip 8	Rock	6	1.8	12	8.00	12	505	<2	<0.5	0.15	24	1217	280	>10	0.38	46
Crip 9	Rock	12	2.0	<5	5.79	<5	964	<2	<0.5	1.07	7	143	14	1.80	0.90	30
Crip 10	Rock	8	1.5	<5	3.77	<5	814	<2	<0.5	>10	2	62	2	1.41	2.26	19
Crip 11	Rock	<5	1.3	29	5.25	29	790	<2	<0.5	1.20	4	164	7	1.85	0.85	22
Crip 12	Rock	<5	1.5	<5	5.51	<5	1927	<2	<0.5	0.72	4	93	6	1.58	1.42	31
Crip 13	Rock	25	1.3	<5	5.68	<5	1820	<2	<0.5	0.84	4	125	6	1.61	1.37	40
Crip 14	Rock	<5	1.3	<5	5.61	<5	2618	<2	<0.5	0.73	3	89	8	1.75	2.27	30
Crip 15	Rock	14	1.8	<5	8.17	<5	1562	<2	<0.5	0.16	9	765	266	8.73	2.75	24
Crip 16 A	Rock	10	1.4	<5	5.14	<5	1372	<2	<0.5	0.06	2	85	6	1.41	0.69	30
Crip 16 B	Rock	10	1.1	<5	6.66	<5	1354	<2	<0.5	0.07	7	176	33	3.15	1.85	39
Crip 18	Rock	10	1.7	<5	5.67	<5	4313	<2	<0.5	0.14	5	222	29	2.14	2.30	26
Crip Pit 1	Rock	1257	1.7	<5	0.20	<5	222	<2	<0.5	0.01	2	241	15	0.27	0.06	<10
Crip Pit 2	Rock	10	1.7	34	2.81	34	1520	<2	<0.5	0.11	5	295	13	1.57	0.89	13
Crip Power P	Rock	16	1.2	<5	7.06	<5	1988	<2	<0.5	0.61	4	141	4	1.60	2.96	32
Crip-Alteration	Rock	23	3.2	360	8.26	360	1756	<2	<0.5	0.08	18	1440	116	3.46	1.12	17
HRS 1	Rock	9	2.0	<5	7.70	<5	747	<2	<0.5	1.72	18	96	5	3.24	0.92	52
HRS 2	Rock	6	0.8	<5	6.75	<5	2318	<2	<0.5	1.20	3	180	3	1.89	2.54	48
HRS 3	Rock	113	8.2	<5	5.62	<5	85	14	<0.5	4.95	8	131	101	8.31	2.55	54
HRS 4	Rock	26	2.8	<5	1.09	<5	104	<2	<0.5	3.79	91	154	86	7.42	0.36	38
HRS 5	Rock	23	1.5	<5	7.74	<5	42	<2	<0.5	1.52	17	86	13	2.49	0.13	56
DC-1 (M01)	Rock	45	1.7	<5	5.49	<5	1495	<2	<0.5	0.92	8	195	25	2.43	1.87	27
TLM-4	Rock	6	1.8	<5	0.44	<5	27	<2	<0.5	>10	45	1340	75	3.34	<0.01	28
TLM-2	Rock	20	1.6	<5	0.40	<5	17	<2	<0.5	0.38	83	1578	34	6.24	<0.01	<10
R1M	Rock	<5	1.3	<5	8.29	<5	931	<2	<0.5	0.47	8	76	13	1.11	0.87	52
R3M	Rock	8	7.8	<5	0.24	<5	184	17	<0.5	0.02	2	169	11	0.47	0.09	<10
R4M	Rock	13	30.6	264	4.22	264	2231	71	<0.5	0.02	2	181	8	1.09	2.65	25



Certificate of Analysis

10-360-02862-01

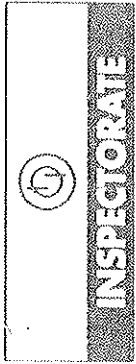
Castillian Resources Ltd.
3151BV 3rd Ave
Whitehorse, Yukon Y1A 1G1

INSPECTORIAL

3151BV 3rd Ave Whitehorse, Yukon Y1A 1G1

#200 - 11620 Horseshoe Way
Richmond, British Columbia V7A 4V5
Canada

Sample Description	Sample Type	Au-IAT-AA ppb	Au ppb	Ag ppm	Al %	As ppm	Ba ppm	Bi ppm	Ca %	Cd ppm	Co ppm	Cr ppm	Cu ppm	Fe %	K %	La ppm
		30-4A-TR	30-4A-TR	30-4A-TR	30-4A-TR	30-4A-TR	30-4A-TR	30-4A-TR	30-4A-TR	30-4A-TR	30-4A-TR	30-4A-TR	30-4A-TR	30-4A-TR	30-4A-TR	30-4A-TR
MCAV	Rock	9	1.4	6.79	0.01	5	10	2	0.01	0.5	1	1	1	0.01	0.01	10
GA (M01)	Rock	6	1.7	4.27	0.01	5	1319	<2	1.70	<0.5	12	157	6	3.00	3.91	40
Paris IM 1-A	Rock	12	1.5	0.41	0.01	5	803	<2	1.36	<0.5	6	188	7	1.71	1.11	21
PIM 1-B	Rock	12	4.4	0.33	0.01	5	94	<2	2.31	<0.5	3	285	11	1.28	0.15	<10
075	Rock	68	1.7	5.98	0.01	5	101	3	1.36	<0.5	3	303	10	0.90	0.13	<10
078	Rock	6	2.0	4.70	0.01	5	2226	<2	0.03	<0.5	5	228	<1	4.51	3.00	20
CAM-23	Rock	5	1.5	5.29	0.01	5	2659	<2	0.15	<0.5	2	178	4	1.20	2.35	28
KEL-29	Rock	13	1.8	7.10	0.01	5	1777	<2	1.21	<0.5	11	197	20	2.22	3.33	41
PD Pit QV	Rock	60	1.9	7.23	0.01	5	2477	<2	0.11	<0.5	5	159	2	2.26	3.97	29
CAROV	Rock	78	20.1	0.35	0.01	5	2106	<2	0.50	<0.5	10	128	14	2.73	3.53	43
PG-1-10 KB	Rock	5	1.2	6.26	0.01	5	279	32	0.02	<0.5	3	294	12	0.47	0.15	<10
GC Road	Rock	18	1.9	4.90	0.01	5	1528	<2	0.94	<0.5	6	155	22	1.91	1.84	34
Alimanda	Rock	18	1.5	8.93	0.01	5	168	<2	0.60	<0.5	8	161	5	3.90	1.60	31
RZAM	Rock	55	1.8	0.26	0.01	5	4721	<2	4.30	<0.5	44	420	13	5.89	5.01	33
RZMI	Rock	9	2.4	5.21	0.01	5	65	<2	0.13	<0.5	3	351	4	0.45	0.08	<10
	Rock						639	<2	1.13	<0.5	9	265	34	2.49	2.36	37



Certificate of Analysis

10-360-02862-01

Castillian Resources Ltd.
3151BV 3rd Ave
Whitehorse, Yukon Y1A 1G1

#200 - 11620 Horseshoe Way
Richmond, British Columbia V7A 4V5
Canada

Sample Description	Sample Type	Mg %	Mn ppm	Mo ppm	Na %	Ni ppm	P ppm	Pb ppm	Sb ppm	Sc ppm	Sr ppm	Ti %	Ti ppm	V ppm	W ppm
		30-4A-TR	30-4A-TR	30-4A-TR	30-4A-TR	30-4A-TR	30-4A-TR	30-4A-TR	30-4A-TR	30-4A-TR	30-4A-TR	30-4A-TR	30-4A-TR	30-4A-TR	30-4A-TR
RZ-12	Rock	0.71	171	6	0.98	<1	348	21	<5	<1	49	0.15	<10	28	<10
CC-1	Rock	0.55	395	4	2.28	<1	314	257	<5	<1	57	0.08	<10	21	<10
CC-2	Rock	0.03	33	2	0.22	<1	70	7	<5	<1	6	<0.01	<10	2	<10
CC-3	Rock	1.49	605	3	3.72	<1	693	5	<5	<1	100	0.43	<10	92	<10
KS-1	Rock	1.01	522	5	2.01	<1	874	>10000	<5	<1	62	0.31	<10	55	<10
KS-2	Rock	0.79	474	20	1.11	<1	496	>10000	<5	<1	30	0.13	<10	30	<10
Cariboo	Rock	1.77	549	4	4.18	<1	839	75	<5	<1	116	0.48	<10	136	<10
Crip 1	Rock	0.58	102	3	2.38	<1	196	21	<5	<1	49	0.14	<10	14	<10
Crip 2	Rock	0.65	77	3	2.24	<1	118	<2	<5	<1	38	0.14	<10	12	<10
Crip 3	Rock	0.26	119	5	3.49	<1	174	17	<5	<1	139	0.13	<10	10	<10
Crip 4	Rock	1.05	132	3	1.28	<1	128	14	<5	<1	93	0.13	<10	10	<10
Crip 5	Rock	0.23	66	2	2.99	<1	67	11	<5	<1	33	0.07	<10	6	<10
Crip 6	Rock	0.77	99	16	0.79	4	782	<2	<5	<1	29	0.14	<10	258	<10
Crip 7	Rock	0.48	64	3	2.23	<1	35	11	<5	<1	59	0.13	<10	10	<10
Crip 8	Rock	7.28	376	5	3.21	166	795	<2	12	3	43	0.11	<10	204	<10
Crip 9	Rock	0.71	205	3	0.02	<1	323	5	<5	<1	191	0.21	<10	23	<10
Crip 10	Rock	0.76	248	3	3.18	<1	75	8	<5	<1	1263	0.05	<10	5	<10
Crip 11	Rock	0.19	114	4	3.18	<1	263	23	<5	<1	220	0.15	<10	18	<10
Crip 12	Rock	0.93	135	3	1.36	<1	52	8	<5	<1	124	0.08	<10	9	<10
Crip 13	Rock	0.86	117	3	1.56	<1	42	14	<5	<1	145	0.11	<10	9	<10
Crip 14	Rock	1.06	123	3	0.81	<1	131	4	<5	<1	101	0.11	<10	9	<10
Crip 15	Rock	2.07	138	4	1.56	40	94	<2	8	<1	95	0.09	<10	101	13
Crip 16 A	Rock	0.54	114	4	3.44	<1	185	<2	<5	<1	29	0.04	<10	4	<10
Crip 16 B	Rock	1.70	258	4	1.81	<1	447	<2	<5	<1	32	0.18	<10	90	<10
Crip 18	Rock	1.31	85	12	0.59	<1	438	15	<5	<1	51	0.17	<10	196	<10
Crip Pit 1	Rock	0.02	30	1	0.02	<1	34	7	<5	<1	9	<0.01	<10	16	<10
Crip Pit 2	Rock	1.90	155	4	0.01	4	522	<2	<5	<1	9	0.09	<10	77	<10
Crip Power P	Rock	0.66	192	3	2.10	<1	274	11	<5	<1	9	0.16	<10	16	<10
Crip-Alteration	Rock	2.07	150	13	0.27	83	1001	113	15	<1	157	0.16	<10	16	<10
HRS 1	Rock	2.29	324	4	4.33	<1	1365	59	<5	<1	52	0.24	<10	199	<10
HRS 2	Rock	1.10	253	4	1.17	<1	253	64	<5	<1	219	0.48	<10	56	<10
HRS 3	Rock	2.06	349	8	0.09	<1	4497	470	<5	<1	118	0.10	<10	11	<10
HRS 4	Rock	1.35	779	6	0.01	<1	387	72	<5	<1	141	0.07	<10	55	<10
HRS 5	Rock	1.74	499	4	5.61	<1	259	41	<5	<1	94	0.05	<10	5	<10
DC-1 (M01)	Rock	1.18	490	3	2.12	<1	420	20	<5	<1	146	0.06	<10	10	<10
TLM-4	Rock	>10	2498	<1	<0.01	918	<10	5	9	<1	50	0.16	<10	20	<10
TLM-2	Rock	>10	1467	<1	<0.01	1555	<10	<2	11	<1	407	<0.01	<10	5	<10
R1M	Rock	0.67	135	4	6.55	<1	673	7	<5	<1	221	<0.01	<10	14	<10
R3M	Rock	0.07	46	1	0.02	<1	21	127	<5	<1	4	<0.01	<10	26	<10
R4M	Rock	0.64	101	3	0.16	<1	27	1384	<5	<1	14	0.04	<10	3	<10



INSPECTORATE

1-800-467-6262

#200 - 11620 Horseshoe Way

Richmond, British Columbia V7A 4V5
Canada

Certificate of Analysis

10-360-02862-01

Castilian Resources Ltd.
3151BV 3rd Ave
Whitehorse, Yukon Y1A 1G1

Sample Description	Sample Type	Mg		Mn		Mo		Na		Ni		P		Pb		Sb		Sc		Sr		Ti		V		W	
		30-4A-TR	%	30-4A-TR	ppm	30-4A-TR	ppm	30-4A-TR	ppm	30-4A-TR	%	30-4A-TR	ppm	30-4A-TR	ppm	30-4A-TR	ppm	30-4A-TR	ppm	30-4A-TR	ppm	30-4A-TR	%	30-4A-TR	ppm	30-4A-TR	ppm
MCAV	Rock	2.18	0.01	643	5	3	1	0.47	0.01	<1	1	578	10	6	5	<1	60	<1	<1	0.23	<10	<10	<10	38	<10	<10	<10
GA (M01)	Rock	1.06	0.02	580	2	2	1	2.04	0.02	<1	1	332	10	24	5	<1	49	<1	<1	0.12	<10	<10	<10	12	<10	<10	<10
Paris IM 1-A	Rock	0.93	0.02	1125	3	3	1	0.02	0.02	<1	1	79	10	9	5	<1	73	<1	<1	<0.01	<10	<10	<10	19	<10	<10	<10
PIM 1-B	Rock	0.57	0.02	601	2	2	1	0.02	0.02	<1	1	49	10	473	5	<1	41	<1	<1	<0.01	<10	<10	<10	17	<10	<10	<10
075	Rock	0.90	0.12	146	3	3	1	0.12	0.12	<1	1	89	10	<2	5	<1	25	<1	<1	0.05	<10	<10	<10	5	<10	<10	<10
078	Rock	0.19	0.284	143	3	3	1	2.84	0.12	<1	1	126	10	15	5	<1	46	<1	<1	0.06	<10	<10	<10	5	<10	<10	<10
CAM-23	Rock	0.80	0.59	638	3	3	1	0.59	0.59	<1	1	318	10	5	5	<1	59	<1	<1	0.15	<10	<10	<10	18	<10	<10	<10
KEL-29	Rock	0.49	2.27	189	3	3	1	2.27	2.27	<1	1	385	10	10	5	<1	68	<1	<1	0.16	<10	<10	<10	15	<10	<10	<10
PD PR QV	Rock	1.74	2.01	326	3	3	1	2.01	2.01	<1	1	395	10	3	3	<1	59	<1	<1	0.25	<10	<10	<10	25	<10	<10	<10
CARQV	Rock	0.03	0.07	36	1	1	1	0.07	0.07	<1	1	50	10	6415	5	<1	12	<1	<1	<0.01	<10	<10	<10	1	<10	<10	<10
PG-1-10 KB	Rock	0.45	2.59	180	4	4	1	2.59	2.59	<1	1	346	10	10	5	<1	272	<1	<1	0.21	<10	<10	<10	20	<10	<10	<10
GC Road	Rock	0.70	1.24	104	24	24	1	1.24	1.24	<1	1	130	10	36	5	<1	76	<1	<1	0.09	<10	<10	<10	7	<10	<10	<10
Alimanda	Rock	4.87	0.33	939	4	4	1	0.33	0.33	33	33	269	10	<2	5	<1	138	<1	<1	0.91	<10	<10	<10	159	<10	<10	<10
R2AM	Rock	0.19	0.04	94	1	1	1	0.04	0.04	<1	1	45	10	16	5	<1	9	<1	<1	0.01	<10	<10	<10	3	<10	<10	<10
RZMI	Rock	0.69	1.20	687	7	7	1	1.20	1.20	<1	1	324	10	23	5	<1	50	<1	<1	0.13	<10	<10	<10	24	<10	<10	<10



INSPECTORATE

V.B. 1000 - 46th Street, Whitehorse, Yukon

#200 - 11620 Horseshoe Way

Richmond, British Columbia V7A 4V5
Canada

Certificate of Analysis

10-360-02862-01

Castilian Resources Ltd.
3151BV 3rd Ave
Whitehorse, Yukon Y1A 1G1

Sample Description	Sample Type	Zn		Zr	
		30-4A-TR ppm	2	30-4A-TR ppm	1
2-100 N	Rock	54		60	
3-400 N	Rock	64		92	
3-450 N	Rock	33		70	
4-300 N	Rock	76		41	
4-300 N-2	Rock	61		41	
5-200 N	Rock	52		88	
5-300 N	Rock	216		108	
5-450 N	Rock	136		116	
5-4400 N	Rock	74		34	
7-0 N	Rock	34		49	
8-0 N	Rock	75		71	
8-300 N	Rock	55		73	
10-50 N	Rock	111		69	
TL-1	Rock	121		35	
TL-2	Rock	40		23	
TL-3	Rock	33		22	
TL-4 A	Rock	33		22	
TL-4 B	Rock	39		23	
TL-5	Rock	30		22	
TL-6	Rock	27		23	
TL-7	Rock	29		22	
TL-8	Rock	27		22	
TL-9	Rock	38		22	
TL-10	Rock	35		23	
TL-11	Rock	33		22	
TL-12	Rock	33		23	
TL-13	Rock	29		24	
TL-14	Rock	64		25	
TL-15	Rock	65		27	
RZ-1	Rock	110		83	
RZ-2	Rock	126		98	
RZ-3	Rock	70		106	
RZ-4	Rock	89		96	
RZ-5	Rock	145		72	
RZ-6	Rock	155		69	
RZ-7	Rock	104		81	
RZ-8	Rock	87		69	
RZ-9	Rock	254		47	
RZ-10	Rock	112		47	
RZ-11	Rock	132		47	



INSPECTORATE

1-800-467-4667

#200 - 11620 Horseshoe Way
Richmond, British Columbia V7A 4V5
Canada

Certificate of Analysis

10-360-02862-01

Castilian Resources Ltd.
3151BV 3rd Ave
Whitehorse, Yukon Y1A 1G1

Sample Description	Sample Type	Zn ppm	Zr ppm
RZ-12	Rock	98	81
CC-1	Rock	79	41
CC-2	Rock	5	26
CC-3	Rock	55	42
KS-1	Rock	1541	39
KS-2	Rock	4017	32
Cariboo	Rock	56	47
Crip 1	Rock	68	33
Crip 2	Rock	60	35
Crip 3	Rock	29	41
Crip 4	Rock	100	30
Crip 5	Rock	46	35
Crip 6	Rock	122	83
Crip 7	Rock	65	34
Crip 8	Rock	209	81
Crip 9	Rock	77	29
Crip 10	Rock	42	36
Crip 11	Rock	35	37
Crip 12	Rock	81	29
Crip 13	Rock	67	29
Crip 14	Rock	73	28
Crip 15	Rock	118	63
Crip 16 A	Rock	76	88
Crip 16 B	Rock	62	42
Crip 18	Rock	97	122
Crip Pit 1	Rock	5	26
Crip Pit 2	Rock	43	38
Crip Power P	Rock	44	34
Crip-Alteration	Rock	70	129
HRS 1	Rock	176	54
HRS 2	Rock	60	36
HRS 3	Rock	763	68
HRS 4	Rock	99	61
HRS 5	Rock	88	43
DC-1 (M01)	Rock	97	49
TLM-4	Rock	21	23
TLM-2	Rock	33	22
RIM	Rock	15	59
R3M	Rock	4	24
R4M	Rock	50	59



INSPECTORATE

#200 - 11620 Horseshoe Way
Richmond, British Columbia V7A 4V5
Canada

Certificate of Analysis

10-360-02862-01

Castillian Resources Ltd.
3151BV 3rd Ave
Whitehorse, Yukon Y1A 1G1

Sample Description	Sample Type	Zn 30-4A-TR ppm	Zr 30-4A-TR ppm
		2	1
MCAV	Rock	100	56
GA (M01)	Rock	68	44
Paris IM 1-A	Rock	33	24
PIM 1-B	Rock	20	24
075	Rock	25	72
078	Rock	31	65
CAM-23	Rock	83	57
KFL-29	Rock	58	62
PD Pt QV	Rock	92	44
CARQV	Rock	4	25
PG-1-10 KB	Rock	49	46
GC Road	Rock	61	29
Almanda	Rock	151	29
R2AM	Rock	6	23
RZM1	Rock	94	91



INSPECTORATE

3000 - 11620 Horseshoe Way

#200 - 11620 Horseshoe Way
Richmond, British Columbia V7A 4V5
Canada

Certificate of Analysis

10-360-02862-01

Castilian Resources Ltd.
3151BV 3rd Ave
Whitehorse, Yukon Y1A 1G1

Sample Description	Au ppb	Ag ppm	Al %	As ppm	Ba ppm	Bi ppm	Ca %	Cd ppm	Co ppm	Cr ppm	Cu ppm	Fe %	K %	La ppm
30-4A-TR	30-4A-TR	30-4A-TR	30-4A-TR	30-4A-TR	30-4A-TR	30-4A-TR	30-4A-TR	30-4A-TR	30-4A-TR	30-4A-TR	30-4A-TR	30-4A-TR	30-4A-TR	30-4A-TR
2-100 N Rock	5	1.0	4.98	9	1901	<2	0.03	<0.5	4	249	4	1.45	4.99	15
2-100 N Dup		0.8	5.05	9	1917	<2	0.03	<0.5	4	250	4	1.46	5.01	17
QCVI1009-00399-0002-BLK		<0.5	<0.01	<5	<10	<2	<0.01	<0.5	<1	<1	<1	<0.01	<0.01	<10
STD-ME-8 expected		61.7									1030			
STD-ME-8 result		60.8	4.73	2524	339	<2	7.04	88.0	15	49	969	3.77	1.41	20
TL-5 Rock		1.1	0.25	148	61	<2	2.75	<0.5	60	849	16	4.03	0.02	38
TL-5 Dup		1.4	0.26	150	60	<2	2.76	<0.5	60	858	16	4.04	0.02	37
QCVI1009-00399-0005-BLK		<0.5	<0.01	<5	<10	<2	<0.01	<0.5	<1	<1	<1	<0.01	<0.01	<10
STD-OREAS-45P-4A expected		0.3		13		0			122	1103	749			
STD-OREAS-45P-4A result		1.7	6.35	<5	252	<2	0.26	<0.5	114	915	662	>10	0.32	64
RZ-8 Rock		2.1	4.04	<5	990	<2	0.90	<0.5	35	266	35	1.82	1.49	20
RZ-8 Dup		1.1	3.96	<5	1079	<2	0.90	<0.5	6	259	35	1.79	1.48	19
QCVI1009-00399-0008-BLK		<0.5	<0.01	<5	<10	<2	<0.01	<0.5	<1	<1	<1	<0.01	<0.01	<10
STD-ME-8 expected		61.7									1030			
STD-ME-8 result		60.1	4.70	2572	386	<2	6.98	85.3	15	48	947	3.73	1.40	19
Crip 8 Rock		1.8	8.00	12	505	<2	0.15	<0.5	24	1217	280	>10	0.58	46
Crip 8 Dup		1.8	7.99	12	510	<2	0.15	<0.5	24	1223	280	>10	0.58	45
QCVI1009-00399-0011-BLK		<0.5	<0.01	<5	<10	<2	<0.01	<0.5	<1	<1	<1	<0.01	<0.01	<10
STD-ME-8 expected		61.7									1030			
STD-ME-8 result		61.8	4.87	2670	317	<2	7.12	84.9	14	48	955	3.84	1.44	19
HRS 4 Rock		2.8	1.09	<5	104	<2	3.79	<0.5	91	154	86	7.42	0.36	38
HRS 4 Dup		2.3	1.11	<5	104	<2	3.80	<0.5	91	155	86	7.48	0.37	39
QCVI1009-00399-0014-BLK		<0.5	<0.01	<5	<10	<2	<0.01	<0.5	<1	<1	<1	<0.01	<0.01	<10
STD-ME-8 expected		61.7									1030			
STD-ME-8 result		61.6	4.79	2617	428	<2	7.12	86.3	15	49	962	3.83	1.42	20
PG-1-10 KB Rock		1.2	6.26	45	1528	<2	0.94	<0.5	6	155	22	1.91	1.84	34
PG-1-10 KB Dup		1.6	6.30	45	1535	<2	0.95	<0.5	6	158	22	1.93	1.86	34
QCVI1009-00399-0017-BLK		<0.5	<0.01	<5	<10	<2	<0.01	<0.5	<1	<1	<1	<0.01	<0.01	<10
STD-ME-8 expected		61.7									1030			
STD-ME-8 result		61.7	4.73	2628	517	<2	7.29	87.8	15	48	968	3.77	1.39	19
STD-Oxi67 expected	1817													
STD-Oxi67 result	1856													
STD-Oxi67 result														
TL-5 Rock	53													
TL-5 Dup	51													
QCVI1009-00400-0004-BLK	5													
RZ-8 Rock	9													
RZ-8 Dup	12													
STD-Oxi67 expected	1817													
STD-Oxi67 result	1807													
Crip 8 Rock	6													
Crip 8 Dup	11													



INSPECTORATE

1000-1000-1000-1000-1000-1000

#200 - 11620 Horseshoe Way
Richmond, British Columbia V7A 4V5
Canada

Certificate of Analysis

10-360-02862-01

Castillian Resources Ltd.
3151BV 3rd Ave
Whitehorse, Yukon Y1A 1G1

Sample Description	Sample Type	Au ppb	Ag ppm	Al %	As ppm	Ba ppm	Bi ppm	Ca %	Cd ppm	Co ppm	Cr ppm	Cu ppm	Fe %	K %	La ppm
QCV1009-00400-0008-BLK		7													
HRS 4	Rock	26													
HRS 4 Dup		26													
STD-Oxi67 expected		1817													
STD-Oxi67 result		1895													
PG-1-10 KB	Rock	5													
PG-1-10 KB Dup		14													
QCV1009-00400-0012-BLK		5													
STD-Oxi67 expected		1817													
STD-Oxi67 result		1824													



INSPECTORATE

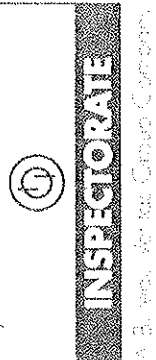
#200 - 11620 Horseshoe Way
Richmond, British Columbia V7A 4V5
Canada

Certificate of Analysis

10-360-02862-01

Castilian Resources Ltd.
3151BV 3rd Ave
Whitehorse, Yukon Y1A 1G1

Sample Description	Mg %	Mn ppm	Mo ppm	Na %	Ni ppm	P ppm	Pb ppm	Sb ppm	Sc ppm	Sr ppm	Ti %	Tl ppm	V ppm	W ppm
30-4A-TR	30-4A-TR	30-4A-TR	30-4A-TR	30-4A-TR	30-4A-TR	30-4A-TR	30-4A-TR	30-4A-TR	30-4A-TR	30-4A-TR	30-4A-TR	30-4A-TR	30-4A-TR	30-4A-TR
2-100 N Rock	0.67	172	4	0.04	<1	155	34	<5	<1	50	0.16	<10	43	11
2-100 N Dup	0.67	173	4	0.04	<1	155	35	<5	<1	51	0.17	<10	44	12
QCV1009-00399-0002-BLK	<0.01	<5	<1	<0.01	<1	<10	<2	<5	<1	<1	<0.01	<10	<1	<10
STD-ME-8 expected							19400							
STD-ME-8 result	0.80	2970	7	1.24	<1	634	>10000	50	<1	368	0.18	<10	56	<10
TL-5 Rock	>10	1199	<1	<0.01	1117	<10	<2	7	<1	92	<0.01	<10	5	<10
TL-5 Dup	>10	1207	<1	<0.01	1128	<10	<2	7	<1	92	<0.01	<10	5	<10
QCV1009-00399-0005-BLK	<0.01	<5	<1	<0.01	<1	<10	<2	<5	<1	<1	<0.01	<10	<1	<10
STD-OREAS-45P-4A expected														
STD-OREAS-45P-4A result	0.20	1262	5	0.07	385	454	22	1	<1	29	0.84	<10	244	<10
RZ-8 Rock	0.51	438	8	1.42	316	424	<2	<5	30	44	0.08	<10	15	<10
RZ-8 Dup	0.49	429	8	1.39	<1	301	40	<5	<1	44	0.08	<10	15	<10
QCV1009-00399-0008-BLK	<0.01	<5	<1	<0.01	<1	299	37	<5	<1	44	0.08	<10	15	<10
STD-ME-8 expected														
STD-ME-8 result	0.75	2953	7	1.23	<1	<10	19400	<5	<1	<1	<0.01	<10	<1	<10
STD-ME-8 result	0.75	2953	7	1.23	<1	619	>10000	49	<1	367	0.18	<10	55	<10
Crip 8 Rock	7.28	376	5	0.25	166	795	<2	12	3	43	0.11	<10	204	<10
Crip 8 Dup	7.18	380	5	0.25	166	795	<2	12	3	43	0.11	<10	205	<10
QCV1009-00399-0011-BLK	<0.01	<5	<1	<0.01	<1	<10	<2	<5	<1	<1	<0.01	<10	<1	<10
STD-ME-8 expected														
STD-ME-8 result	0.77	3038	7	1.27	<1	616	>10000	48	<1	367	0.18	<10	55	<10
HRS 4 Rock	1.35	779	6	0.01	<1	387	72	<5	<1	94	0.05	<10	5	<10
HRS 4 Dup	1.37	780	6	0.01	<1	384	74	<5	<1	95	0.05	<10	5	<10
QCV1009-00399-0014-BLK	<0.01	<5	<1	<0.01	<1	<10	<2	<5	<1	<1	<0.01	<10	<1	<10
STD-ME-8 expected														
STD-ME-8 result	0.77	3019	7	1.25	<1	623	>10000	50	<1	388	0.19	<10	56	<10
PG-1-10 KB Rock	0.45	180	4	2.59	<1	346	10	<5	<1	272	0.21	<10	20	<10
PG-1-10 KB Dup	0.46	181	4	2.61	<1	342	9	<5	<1	273	0.21	<10	20	<10
QCV1009-00399-0017-BLK	<0.01	<5	<1	<0.01	<1	<10	<2	<5	<1	<1	<0.01	<10	<1	<10
STD-ME-8 expected														
STD-ME-8 result	0.75	2995	7	1.22	<1	625	>10000	49	<1	377	0.18	<10	56	<10



Inspectorate Exploration & Mining Services Ltd.
 #200 - 11620 Horseshoe Way
 Richmond, British Columbia V7A 4V5 Canada
 Phone: 604-272-7818

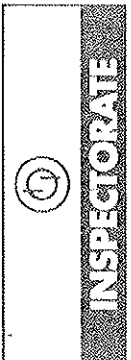
Certificate of Analysis

10-360-03187-01

<p>Distribution List</p> <p>Attention: Kevin Brewer 3151BV 3rd Ave Whitehorse, Yukon Y1A 1G1 Phone: 604-812-2863 Email: kbrewer@largoresources.com</p> <p>Attention: R. Cambell Email: rcambell@largoresources.com</p> <p>Attention: Bill Pearson Email: bpearson@tucanoexploration.com</p>	<p>Submitted By: Castillian Resources Ltd. 3151BV 3rd Ave Whitehorse, Yukon Y1A 1G1</p> <p>Attention: Kevin Brewer</p> <p>Project: PureGold Description:</p> <table border="1" style="width: 100%; border-collapse: collapse;"> <thead> <tr> <th style="text-align: left;">Samples</th> <th style="text-align: left;">Type</th> <th style="text-align: left;">Preparation Description</th> </tr> </thead> <tbody> <tr> <td style="text-align: center;">4</td> <td style="text-align: center;">Rock</td> <td>SP-RX-2K/Rock/Chips/Drill Core</td> </tr> </tbody> </table> <table border="1" style="width: 100%; border-collapse: collapse;"> <thead> <tr> <th style="text-align: left;">Method</th> <th style="text-align: left;">Description</th> </tr> </thead> <tbody> <tr> <td>Au-IAT-AA</td> <td>Au, IAT Fire Assay, AAS</td> </tr> <tr> <td>30-AR-TR</td> <td>30 Element, Aqua Regia, ICP, Trace Level</td> </tr> </tbody> </table>	Samples	Type	Preparation Description	4	Rock	SP-RX-2K/Rock/Chips/Drill Core	Method	Description	Au-IAT-AA	Au, IAT Fire Assay, AAS	30-AR-TR	30 Element, Aqua Regia, ICP, Trace Level
Samples	Type	Preparation Description											
4	Rock	SP-RX-2K/Rock/Chips/Drill Core											
Method	Description												
Au-IAT-AA	Au, IAT Fire Assay, AAS												
30-AR-TR	30 Element, Aqua Regia, ICP, Trace Level												
<p>Date Received: 10/15/2010 Date Completed: 10/27/2010 Invoice:</p>													

The results of this assay were based solely upon the content of the sample submitted. Any decision to invest should be made only after the potential investment value of the claim or deposit has been determined based on the results of assays of multiple samples of geologic materials collected by the prospective investor or by a qualified person selected by him and based on an evaluation of all engineering data which is available concerning any proposed project. For our complete terms and conditions please see our website at www.inspectorate.com.

By _____
 David Chiu, BC Certified Assayer



#200 - 11620 Horseshoe Way
 Richmond, British Columbia V7A 4V5
 Canada

Certificate of Analysis

10-360-03187-01

Castillian Resources Ltd.
 3151BV 3rd Ave
 Whitehorse, Yukon Y1A 1G1

Sample Description	Sample Type	Au-1AT-AA	Au	Ag	Al	As	Ba	Bi	Ca	Cd	Co	Cr	Cu	Fe	Hg	K
		ppb	ppm	ppm	%	ppm	ppm	ppm	%	ppm	ppm	ppm	ppm	%	ppm	%
		5	0.1	0.01	0.01	5	10	2	0.01	0.5	1	1	1	0.01	3	0.01
Crip 1 Bill	Rock	14	0.6	1.88	171	154	10	10	0.10	<0.5	8	347	109	3.82	<3	0.05
Crip 2 Bill	Rock	<5	0.2	2.39	59	140	<2	<2	0.07	<0.5	11	635	29	2.06	<3	0.06
Crip 3 Bill	Rock	13	0.2	2.11	52	437	7	7	1.06	<0.5	34	241	31	3.70	<3	0.09
Crip 4 Bill	Rock	7	0.2	1.87	33	90	7	7	0.81	<0.5	43	125	150	7.37	<3	0.14



INSPECTORATE

3151BV 3rd Ave Whitehorse, Yukon Y1A 1G1

#200 - 11620 Horseshoe Way

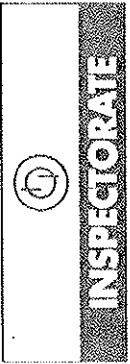
Richmond, British Columbia V7A 4V5
Canada

Certificate of Analysis

10-360-03187-01

Castilian Resources Ltd.
3151BV 3rd Ave
Whitehorse, Yukon Y1A 1G1

Sample Description	Sample Type	La	Mg	Mn	Mo	Na	Ni	P	Pb	Sb	Sc	Sr	Ti	Tl	V
		30-AR-TR	30-AR-TR	30-AR-TR	30-AR-TR	30-AR-TR	30-AR-TR	30-AR-TR	30-AR-TR	30-AR-TR	30-AR-TR	30-AR-TR	30-AR-TR	30-AR-TR	30-AR-TR
		ppm	%	ppm	ppm	%	ppm	ppm	ppm	ppm	ppm	ppm	%	ppm	ppm
Crip 1 Bill	Rock	2	0.01	5	<1	0.01	1	10	2	2	1	1	0.01	10	1
Crip 2 Bill	Rock	4	1.89	220	<1	0.03	94	336	9	<2	9	9	<0.01	<10	23
Crip 3 Bill	Rock	<2	2.75	216	<1	0.01	183	77	<2	6	8	3	0.06	<10	22
Crip 4 Bill	Rock	29	0.74	373	<1	0.09	136	2881	<2	<2	16	79	0.03	<10	44
Crip 4 Bill	Rock	19	0.38	396	<1	0.22	216	2070	<2	<2	14	96	0.03	<10	44



INSPECTORATE

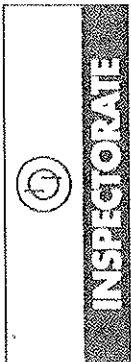
#200 - 11620 Horseshoe Way
 Richmond, British Columbia V7A 4V5
 Canada

Certificate of Analysis

10-360-03187-01

Castillian Resources Ltd.
 3151BV 3rd Ave
 Whitehorse, Yukon Y1A 1G1

Sample Description	Sample Type	W 30-AR-TR ppm	Zn 30-AR-TR ppm	Zr 30-AR-TR ppm
Crip 1 Bill	Rock	<10	182	71
Crip 2 Bill	Rock	<10	81	52
Crip 3 Bill	Rock	<10	155	73
Crip 4 Bill	Rock	<10	202	119



A Bureau Veritas Group Company

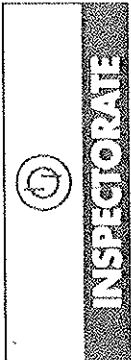
#200 - 11620 Horseshoe Way
 Richmond, British Columbia V7A 4V5
 Canada

Certificate of Analysis

10-360-03187-01

Castilian Resources Ltd.
 3151BV 3rd Ave
 Whitehorse, Yukon Y1A 1G1

Sample Description	Sample Type	Au Au-1AT-AA ppb	Ag 30-AR-TR ppm	Al 30-AR-TR %	As 30-AR-TR ppm	Ba 30-AR-TR ppm	Bi 30-AR-TR ppm	Ca 30-AR-TR %	Cd 30-AR-TR ppm	Co 30-AR-TR ppm	Cr 30-AR-TR ppm	Cu 30-AR-TR ppm	Fe 30-AR-TR %	Hg 30-AR-TR ppm	K 30-AR-TR %
Crip 1 Bill	Rock	5	0.6	1.88	171	154	10	0.01	<0.5	8	347	109	3.82	<3	0.05
Crip 1 Bill Dup			0.6	1.82	173	150	10	0.10	<0.5	8	338	107	3.75	<3	0.05
QC-V1010-00378-0002-BLK			<0.1	<0.01	<5	<10	<2	<0.01	<0.5	<1	<1	<1	<0.01	<3	<0.01
Crip 1 Bill	Rock	14													
Crip 1 Bill Dup		14													
QC-V1010-00379-0002-BLK		7													
STD-OxH66 expected		1285													
STD-OxH66 result		1311													



A. B. Services Group Company

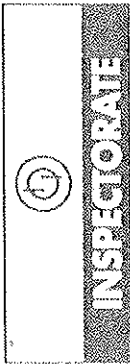
#200 - 11620 Horseshoe Way
 Richmond, British Columbia V7A 4V5
 Canada

Certificate of Analysis

10-360-03187-01

Castilian Resources Ltd.
 3151BY 3rd Ave
 Whitehorse, Yukon Y1A 1G1

Sample Description	Sample Type	La	ME	Mn	Mo	Na	Ni	P	Pb	Sb	Sc	Sr	Ti	Tl	V
		30-AR-TR	30-AR-TR	30-AR-TR	30-AR-TR	30-AR-TR	30-AR-TR	30-AR-TR	30-AR-TR	30-AR-TR	30-AR-TR	30-AR-TR	30-AR-TR	30-AR-TR	30-AR-TR
		ppm	%	ppm	ppm	%	ppm	ppm	ppm	ppm	ppm	ppm	%	ppm	ppm
Crip 1 Bill	Rock	2	0.01	5	1	0.01	1	10	2	2	1	1	0.01	10	1
Crip 1 Bill Dup	Rock	4	1.89	220	<1	0.03	94	336	9	<2	9	9	<0.01	<10	23
QC V1010-00378-0002-BLK		4	1.85	218	<1	0.03	92	338	8	<2	9	8	<0.01	<10	22
		<2	<0.01	<5	<1	<0.01	<1	<10	<2	<2	<1	<1	<0.01	<10	<1



Inspectorate Group Company

#200 - 11620 Horseshoe Way
 Richmond, British Columbia V7A 4V5
 Canada

Certificate of Analysis

10-360-03187-01

Castilian Resources Ltd.
 3151BV 3rd Ave
 Whitehorse, Yukon Y1A 1G1

Sample Description	Sample Type	W 30-AR-TR ppm 10	Zn 30-AR-TR ppm 2	Zr 30-AR-TR ppm 2
Crip 1 Bill Rock		<10	182	71
Crip 1 Bill Dup		<10	180	67
QC/1010-00378-0002-BLK		<10	<2	<2



INSPECTORATE

100 - 11620 Horseshoe Way
Richmond, British Columbia V7A 4V5 Canada
Phone: 604-272-7818

Inspectorate America Corporation
#200 - 11620 Horseshoe Way
Richmond, British Columbia V7A 4V5 Canada
Phone: 604-272-7818

Certificate of Analysis

10-360-02882-01

Distribution List

Attention: Kevin Brewer
3151BV 3rd Ave
Whitehorse, Yukon Y1A 1G1
Phone: 604-812-2863
EMail: kbrewer@largoresources.com

Attention: R. Cambell
EMail: rcambell@largoresources.com

Attention: Bill Pearson
EMail: bpearson@tucanoexploration.com

Submitted By: Castillian Resources Ltd.

3151BV 3rd Ave
Whitehorse, Yukon Y1A 1G1

Attention: Kevin Brewer


Project: PureGold
Description:

Samples	Type	Preparation Description
1	Rock	SP-RX-2K/Rock/Chips/Drill Core

Date Received: 09/14/2010
Date Completed: 09/30/2010
Invoice:

Method	Description
30-4A-TR	30 Element, 4 Acid, ICP, Trace Level
Au-1AT-AA	Au, 1AT Fire Assay, AAS

The results of this assay were based solely upon the content of the sample submitted. Any decision to invest should be made only after the potential investment value of the claim or deposit has been determined based on the results of assays of multiple samples of geologic materials collected by the prospective investor or by a qualified person selected by him and based on an evaluation of all engineering data which is available concerning any proposed project. For our complete terms and conditions please see our website at www.inspectorate.com.

By 
David Chifu, BC Certified Assayer



Certificate of Analysis

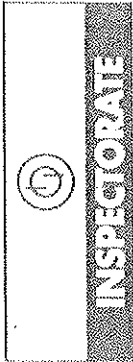
10-360-02882-01

Castilian Resources Ltd.
3151BV 3rd Ave
Whitehorse, Yukon Y1A 1G1

ANALYST: JAMES W. HARRISON

#200 - 11620 Horseshoe Way
Richmond, British Columbia V7A 4V5
Canada

Sample Description	Au ppb	Ag ppm	Al %	As ppm	Ba ppm	Bi ppm	Ca %	Cd ppm	Co ppm	Cr ppm	Cu ppm	Fc %	K %	La ppm
CC-1 Rock	52	<0.5	5.23	10	1558	<2	0.38	<0.5	6	208	118	1.83	1.93	29
	5	0.5	0.01	5	10	2	0.01	0.5	1	1	1	0.01	0.01	10
	Au-1AT-AA	30-4A-TR	30-4A-TR	30-4A-TR	30-4A-TR	30-4A-TR	30-4A-TR	30-4A-TR	30-4A-TR	30-4A-TR	30-4A-TR	30-4A-TR	30-4A-TR	30-4A-TR



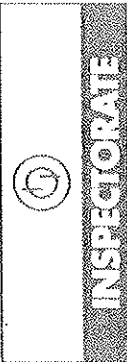
Certificate of Analysis

10-360-02882-01

Castillian Resources Ltd.
3151BV 3rd Ave
Whitehorse, Yukon Y1A 1G1

#200 - 11620 Horseshoe Way
Richmond, British Columbia V7A 4V5
Canada

Sample Description	Mg	Mn	Mo	Na	Ni	P	Pb	Sb	Sc	Sr	Ti	Ti	V	W
Type	30-4A-TR	30-4A-TR	30-4A-TR	30-4A-TR	30-4A-TR	30-4A-TR	30-4A-TR	30-4A-TR	30-4A-TR	30-4A-TR	30-4A-TR	30-4A-TR	30-4A-TR	30-4A-TR
Rock	0.41	273	2	2.42	8	301	67	<5	+	36	<10	<10	43	<10
	%	ppm	ppm	%	ppm	ppm	ppm	ppm	ppm	ppm	ppm	%	ppm	ppm
	0.01	5	1	0.01	1	10	2	5	1	1	10	0.01	1	10



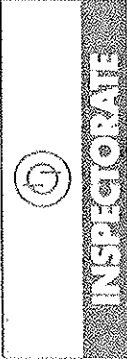
Certificate of Analysis

10-360-02882-01

Castilian Resources Ltd.
3151BV 3rd Ave
Whitehorse, Yukon Y1A 1G1

#200 - 11620 Horseshoe Way
Richmond, British Columbia V7A 4V5
Canada

Sample Description	Sample Type	Mg %	Mn ppm	Mo ppm	Na %	Ni ppm	P ppm	Pb ppm	Sb ppm	Sc ppm	Sr ppm	Ti %	V ppm	W ppm
30-4A-TR	30-4A-TR	30-4A-TR	30-4A-TR	30-4A-TR	30-4A-TR	30-4A-TR	30-4A-TR	30-4A-TR	30-4A-TR	30-4A-TR	30-4A-TR	30-4A-TR	30-4A-TR	30-4A-TR
CC-1	Rock	0.41	273	2	2.42	8	301	67	<5	4	36	0.08	43	<10
CC-1 Dup		0.41	272	2	2.41	7	299	68	<5	4	36	0.07	43	<10
QC\1609-00403-0602-BLK		<0.01	<5	<1	<0.01	<1	<10	<2	<5	<1	<1	<0.01	<1	<10
STD-ME-8 expected							19400							
STD-ME-8 result		0.82	3291	3	1.31	31	634	>10000	58	5	397	0.18	95	10



Certificate of Analysis

10-360-02882-01

Castillian Resources Ltd.
3151BV 3rd Ave
Whitehorse, Yukon Y1A 1G1

#200 - 11620 Horseshoe Way
Richmond, British Columbia V7A 4V5
Canada

Sample Description	Sample Type	Zn 30-4A-TR ppm	Zr 30-4A-TR ppm
CC-1	Rock	90	19
CC-1 Dup		91	19
QCV1009-00403-0002-BLK		<2	<1
STD-ME-8 expected		19200	
STD-ME-8 result		>10000	29



INSPECTORATE

Certificate of Analysis

10-360-02724-01

Inspectorate America Corporation
#200 - 11620 Horseshoe Way
Richmond, British Columbia V7A 4V5 Canada
Phone: 604-272-7818

Distribution List

Attention: Kevin Brewer
3151BV 3rd Ave
Whitehorse, Yukon Y1A 1G1
Phone: 604-812-2863
EMail: kbrewer@largoresources.com

Attention: R. Cambell
EMail: rcambell@largoresources.com

Submitted By: Castilian Resources Ltd.

3151BV 3rd Ave
Whitehorse, Yukon Y1A 1G1

Attention: Kevin Brewer

Project: **PureGold**
Description:

Date Received: 08/30/2010
Date Completed: 09/08/2010
Invoice:


Samples Type Preparation Description

14 Sediment SP-SS-1K/Soils, Humus Sediments 1kg dried, sieved and riffle split

Method Description

Au-1AT-AA Au, 1AT Fire Assay, AAS
30-AR-TR 30 Element, Aqua Regia, ICP, Trace Level

The results of this assay were based solely upon the content of the sample submitted. Any decision to invest should be made only after the potential investment value of the claim or deposit has been determined based on the results of assays of multiple samples of geologic materials collected by the prospective investor or by a qualified person selected by him and based on an evaluation of all engineering data which is available concerning any proposed project. For our complete terms and conditions please see our website at www.inspectorate.com.

By 
David Chiu, BC Certified Assayer



INSPECTORATE

#200 - 11620 Horseshoe Way
Richmond, British Columbia V7A 4V5
Canada

Certificate of Analysis

10-360-02724-01

Castilian Resources Ltd.
3151BV 3rd Ave
Whitehorse, Yukon Y1A 1G1

Sample Description	Sample Type	Au Au-IAT-AA ppb	Ag 30-AR-TR ppm	Al 30-AR-TR %	As 30-AR-TR ppm	Ba 30-AR-TR ppm	Bi 30-AR-TR ppm	Ca 30-AR-TR %	Cd 30-AR-TR ppm	Co 30-AR-TR ppm	Cr 30-AR-TR ppm	Cu 30-AR-TR ppm	Fe 30-AR-TR %	Hg 30-AR-TR ppm	K 30-AR-TR %
006	Sediment	7	0.5	1.25	<5	245	<2	0.20	<0.5	4	16	8	1.36	<3	0.05
009	Sediment	13	0.4	1.25	9	482	<2	0.35	<0.5	11	16	12	2.12	<3	0.09
011	Sediment	9	0.3	1.05	8	357	<2	0.41	<0.5	8	17	14	1.93	<3	0.08
012	Sediment	12	0.3	0.91	39	256	<2	0.50	<0.5	10	17	24	2.27	<3	0.06
014	Sediment	8	0.3	0.91	<5	229	<2	0.14	<0.5	4	12	6	1.14	<3	0.04
016	Sediment	8	0.3	0.59	<5	156	<2	0.08	<0.5	2	7	4	0.79	<3	0.04
017	Sediment	23	0.3	0.72	8	157	<2	0.14	<0.5	3	11	6	1.12	<3	0.04
018	Sediment	9	0.4	0.85	18	213	<2	0.16	<0.5	4	12	8	1.53	<3	0.04
019	Sediment	9	0.5	0.96	17	157	<2	0.15	<0.5	5	13	12	1.76	<3	0.05
020	Sediment	19	0.3	0.81	17	260	<2	0.35	<0.5	7	11	12	1.67	<3	0.08
023	Sediment	6	0.3	0.78	29	186	<2	0.46	<0.5	8	12	24	2.89	<3	0.05
024	Sediment	6	0.4	0.95	27	245	<2	0.54	<0.5	10	16	29	3.46	<3	0.05
025	Sediment	8	0.8	0.89	21	280	<2	0.46	<0.5	9	13	28	2.36	<3	0.07
026	Sediment	11	0.4	0.78	22	155	<2	0.19	<0.5	5	9	15	1.45	<3	0.06



Certificate of Analysis

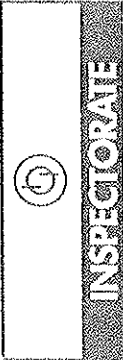
Castilian Resources Ltd.
3151BV 3rd Ave
Whitehorse, Yukon Y1A 1G1

INSPECTORATE

#200 - 11620 Horseshoe Way
Richmond, British Columbia V7A 4V5
Canada

10-360-02724-01

Sample Description	Sample Type	La	Mg	Mn	Mo	Na	Ni	P	Pb	Sb	Sc	Sr	Ti	Tl	V
		30-AR-TR	30-AR-TR	30-AR-TR	30-AR-TR	30-AR-TR	30-AR-TR	30-AR-TR	30-AR-TR	30-AR-TR	30-AR-TR	30-AR-TR	30-AR-TR	30-AR-TR	30-AR-TR
		ppm	%	ppm	ppm	%	ppm	ppm	ppm	ppm	ppm	ppm	%	ppm	ppm
		2	0.01	5	1	0.01	1	10	2	2	1	1	0.01	10	1
006	Sediment	23	0.32	86	<1	<0.01	10	431	10	<2	1	17	0.02	<10	37
009	Sediment	54	0.37	946	<1	0.01	13	559	19	<2	2	47	0.02	<10	40
011	Sediment	28	0.40	297	<1	0.01	13	651	7	<2	2	32	0.03	<10	44
012	Sediment	22	0.46	315	<1	0.01	19	1120	9	<2	3	38	0.03	<10	48
014	Sediment	25	0.27	66	<1	<0.01	8	358	11	<2	1	13	0.01	<10	28
016	Sediment	28	0.15	53	<1	<0.01	5	262	10	<2	<1	8	0.01	<10	20
017	Sediment	22	0.23	95	<1	<0.01	7	341	12	<2	<1	12	0.01	<10	27
018	Sediment	16	0.25	121	<1	<0.01	9	415	7	<2	<1	13	0.01	<10	33
019	Sediment	19	0.28	125	<1	<0.01	11	499	8	<2	1	16	0.02	<10	37
020	Sediment	22	0.27	218	<1	<0.01	14	652	8	<2	2	27	0.01	<10	30
023	Sediment	21	0.33	326	3	<0.01	23	1548	8	<2	5	33	0.02	<10	49
024	Sediment	24	0.40	455	3	<0.01	28	1551	10	<2	5	35	0.02	<10	58
025	Sediment	27	0.36	424	3	<0.01	26	792	12	<2	1	47	0.01	<10	34
026	Sediment	22	0.29	144	1	<0.01	13	556	9	<2	<1	18	0.01	<10	26



#200 - 11620 Horseshoe Way
 Richmond, British Columbia V7A 4V5
 Canada

Certificate of Analysis

10-360-02724-01

Castilian Resources Ltd.
 3151BV 3rd Ave
 Whitehorse, Yukon Y1A 1G1

Sample Description	Sample Type	W 30-AR-TR ppm	Zn 30-AR-TR ppm	Zr 30-AR-TR ppm
006	Sediment	<10	35	<2
009	Sediment	<10	49	<2
011	Sediment	<10	58	<2
012	Sediment	<10	66	<2
014	Sediment	<10	29	<2
016	Sediment	<10	20	<2
017	Sediment	<10	27	<2
018	Sediment	<10	33	<2
019	Sediment	<10	44	<2
020	Sediment	<10	53	<2
023	Sediment	<10	98	<2
024	Sediment	<10	112	<2
025	Sediment	<10	105	<2
026	Sediment	<10	48	<2



Certificate of Analysis

10-360-02724-01

Castilian Resources Ltd.
3151BV 3rd Ave
Whitehorse, Yukon Y1A 1G1

INSPECTORATE

#200 - 11620 Horseshoe Way
Richmond, British Columbia V7A 4V5
Canada

Sample Description	Au ppb	Ag ppm	Al %	As ppm	Ba ppm	Bi ppm	Ca %	Cd ppm	Co ppm	Cr ppm	Cu ppm	Fc %	Hg ppm	K %
Sample Type	30-AR-TR	30-AR-TR	30-AR-TR	30-AR-TR	30-AR-TR	30-AR-TR	30-AR-TR	30-AR-TR	30-AR-TR	30-AR-TR	30-AR-TR	30-AR-TR	30-AR-TR	30-AR-TR
QCV1008-01041-0001-BLK	5	<0.1	<0.01	<5	<10	<2	<0.01	<0.5	<1	<1	<1	<0.01	<3	<0.01
006 Sediment		0.5	1.25	<5	245	<2	0.20	<0.5	4	16	8	1.56	<3	0.05
006 Dup		0.3	1.25	5	245	<2	0.20	<0.5	4	17	8	1.56	<3	0.05
QCV1008-01041-0003-BLK		<0.1	<0.01	<5	<10	<2	<0.01	<0.5	<1	<1	<1	<0.01	<3	<0.01
STD-OREAS-45P-AR expected		0.3		4		0		0.1	107	892	674			
STD-OREAS-45P-AR result		0.3	3.61	<5	196	<2	0.26	<0.5	114	889	688	>10	<3	0.08
006 Sediment	7													
006 Dup	11													



INSPECTORATE

#200 - 11620 Horseshoe Way
Richmond, British Columbia V7A 4V5
Canada

Certificate of Analysis

10-360-02724-01

Castilian Resources Ltd.
3151BV 3rd Ave
Whitehorse, Yukon Y1A 1G1

Sample Description	Sample Type	La	Mg	Mn	Mo	Na	Ni	P	Pb	Sb	Sc	Sr	Ti	Ti	V
		30-AR-TR	30-AR-TR	30-AR-TR	30-AR-TR	30-AR-TR	30-AR-TR	30-AR-TR	30-AR-TR	30-AR-TR	30-AR-TR	30-AR-TR	30-AR-TR	30-AR-TR	30-AR-TR
		ppm	%	ppm	ppm	%	ppm	ppm	ppm	ppm	ppm	ppm	%	ppm	ppm
		2	0.01	5	1	0.01	1	10	2	2	1	1	0.01	10	1
QCV1008-01041-0001-BLK		<2	<0.01	<5	<1	<0.01	<1	<10	<2	<2	<1	<1	<0.01	<10	<1
006 Sediment		23	0.32	86	<1	<0.01	10	431	10	<2	1	17	0.02	<10	37
006 Dup		24	0.32	86	<1	<0.01	12	429	9	<2	1	17	0.02	<10	37
QCV1008-01041-0003-BLK		<2	<0.01	<5	<1	<0.01	<1	<10	<2	<2	<1	<1	<0.01	<10	<1
STD-OREAS-45P-AR expected		76	0.13	1238	<1	0.02	292	369	19	0	52	14	0.18	<10	235
STD-OREAS-45P-AR result							317		22	<2					



INSPECTORATE

#200 - 11620 Horseshoe Way
Richmond, British Columbia V7A 4V5
Canada

Certificate of Analysis

10-360-02724-01

Castilian Resources Ltd.
3151BV 3rd Ave
Whitehorse, Yukon Y1A 1G1

Sample Description	Sample Type	W 30-AR-TR ppm 10	Zn 30-AR-TR ppm 2	Zr 30-AR-TR ppm 2
QCV1008-01041-0001-BLK		<10	<2	<2
006	Sediment	<10	35	<2
006 Dup		<10	34	<2
QCV1008-01041-0003-BLK		<10	<2	<2
STD-OREAS-45P-AR expected			123	
STD-OREAS-45P-AR result		<10	124	14



INSPECTORATE

Certificate of Analysis

10-360-02723-01

Inspectorate America Corporation
#200 - 11620 Horseshoe Way
Richmond, British Columbia V7A 4V5 Canada
Phone: 604-272-7818

Distribution List

Attention: Kevin Brewer
3151BV 3rd Ave
Whitehorse, Yukon Y1A 1G1
Phone: 604-812-2863
EMail: kbrewer@largoresources.com

Attention: R. Cambell
EMail: rcambell@largoresources.com

Submitted By: Castilian Resources Ltd.

3151BV 3rd Ave
Whitehorse, Yukon Y1A 1G1

Attention: Kevin Brewer

Project: PureGold

Description:


Samples	Type	Preparation Description
12	Rock	SP-RX-2K/Rock/Chips/Drill Core

Date Received: 08/30/2010
Date Completed: 09/08/2010
Invoice:

Method Description

Au-1AT-AA	Au, 1AT Fire Assay, AAS
30-AR-TR	30 Element, Aqua Regia, ICP, Trace Level

The results of this assay were based solely upon the content of the sample submitted. Any decision to invest should be made only after the potential investment value of the claim or deposit has been determined based on the results of assays of multiple samples of geologic materials collected by the prospective investor or by a qualified person selected by him and based on an evaluation of all engineering data which is available concerning any proposed project. For our complete terms and conditions, please see our website at www.inspectorate.com.

By 
David Ortu, BC Certified Assayer



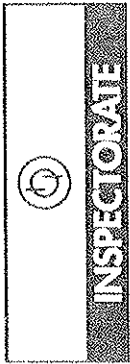
#200 - 11620 Horseshoe Way
 Richmond, British Columbia V7A 4V5
 Canada

Certificate of Analysis

10-360-02723-01

Castilian Resources Ltd.
 3151BV 3rd Ave
 Whitehorse, Yukon Y1A 1G1

Sample Description	Sample Type	Au g/ton 0.005	Ag ppm 0.1	Al % 0.01	As ppm 5	Ba ppm 10	Bi ppm 2	Ca % 0.01	Cd ppm 0.5	Co ppm 1	Cr ppm 1	Cu ppm 1	Fe % 0.01	Hg ppm 3	K % 0.01
		30-AR-TR	30-AR-TR	30-AR-TR	30-AR-TR	30-AR-TR	30-AR-TR	30-AR-TR	30-AR-TR	30-AR-TR	30-AR-TR	30-AR-TR	30-AR-TR	30-AR-TR	30-AR-TR
01	Rock	0.015	0.4	0.37	6	99	<2	0.03	<0.5	<1	65	2	0.44	<3	0.31
02	Rock	0.010	0.5	0.35	14	557	9	0.05	<0.5	<1	136	7	0.79	<3	0.32
03	Rock	0.007	0.5	0.37	32	402	<2	0.30	<0.5	4	88	5	0.77	<3	0.35
04	Rock	<0.005	0.4	0.41	95	222	<2	0.12	<0.5	3	98	14	2.05	<3	0.31
05	Rock	0.005	0.4	0.59	21	236	<2	0.08	<0.5	4	106	20	1.13	<3	0.42
07	Rock	0.012	0.4	0.65	11	151	<2	0.05	<0.5	3	81	4	0.78	<3	0.35
08	Rock	<0.005	0.4	0.17	<5	120	<2	0.02	<0.5	2	168	3	0.46	<3	0.16
010	Rock	0.006	0.4	0.64	<5	231	<2	0.28	<0.5	7	98	18	2.60	<3	0.46
013	Rock	0.008	0.4	0.31	<5	217	<2	0.13	<0.5	3	85	6	0.57	<3	0.35
015	Rock	<0.005	0.4	0.39	<5	202	<2	0.03	<0.5	2	69	3	0.48	<3	0.37
021	Rock	0.008	0.5	1.76	<5	236	<2	0.13	<0.5	25	70	15	3.37	<3	0.20
022	Rock	0.012	0.5	0.71	96	119	<2	0.05	<0.5	4	54	36	3.97	<3	0.07



#200 - 11620 Horseshoe Way
 Richmond, British Columbia V7A 4V5
 Canada

Certificate of Analysis

10-360-02723-01

Castillian Resources Ltd.
 3151BV 3rd Ave
 Whitehorse, Yukon Y1A 1G1

Sample Description	Sample Type	La	Mg	Mn	Mo	Na	Ni	P	Pb	Sb	Sc	Sr	Ti	Tl	V
		30-AR-TR	30-AR-TR	30-AR-TR	30-AR-TR	30-AR-TR	30-AR-TR	30-AR-TR	30-AR-TR	30-AR-TR	30-AR-TR	30-AR-TR	30-AR-TR	30-AR-TR	30-AR-TR
		ppm	%	ppm	ppm	%	ppm	ppm	ppm	ppm	ppm	ppm	%	ppm	ppm
01	Rock	6	0.06	39	<1	0.03	2	60	6	2	2	3	<0.01	<10	3
02	Rock	11	0.06	49	<1	0.03	4	73	9	<2	2	17	<0.01	<10	3
03	Rock	11	0.03	35	<1	0.03	3	687	9	<2	<1	73	0.16	<10	12
04	Rock	24	0.03	181	2	0.02	8	926	9	<2	5	8	0.01	<10	13
05	Rock	7	0.10	132	<1	0.02	6	315	7	<2	3	6	<0.01	<10	8
07	Rock	6	0.19	83	<1	0.01	4	234	2	<2	2	4	0.01	<10	9
08	Rock	10	0.01	106	<1	0.01	4	112	20	<2	<1	4	<0.01	<10	2
010	Rock	18	0.05	86	<1	0.02	7	705	17	<2	2	22	0.11	<10	17
013	Rock	5	0.02	23	<1	0.03	2	637	14	<2	<1	106	0.11	<10	11
015	Rock	16	0.05	77	<1	0.02	2	54	13	<2	3	3	<0.01	<10	3
021	Rock	22	1.55	404	1	0.02	70	571	<2	<2	3	9	<0.01	<10	54
022	Rock	12	0.02	57	6	<0.01	21	781	15	<2	7	12	<0.01	<10	65



INSPECTORATE

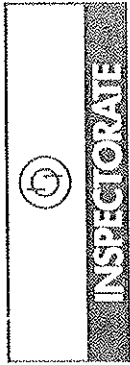
#200 - 11620 Horseshoe Way
Richmond, British Columbia V7A 4V5
Canada

Certificate of Analysis

10-360-02723-01

Castillian Resources Ltd.
3151BV 3rd Ave
Whitehorse, Yukon Y1A 1G1

Sample Description	Sample Type	W 30-AR-TR ppm 10	Zn 30-AR-TR ppm 2	Zr 30-AR-TR ppm 2
01	Rock	<10	8	21
02	Rock	129	13	15
03	Rock	20	5	6
04	Rock	<10	22	4
05	Rock	<10	18	<2
07	Rock	<10	20	22
08	Rock	21	9	4
010	Rock	<10	37	10
013	Rock	49	4	12
015	Rock	14	7	9
021	Rock	<10	226	2
022	Rock	11	113	<2



#200 - 11620 Horseshoe Way
 Richmond, British Columbia V7A 4V5
 Canada

Certificate of Analysis

10-360-02723-01

Castillian Resources Ltd.
 3151BV 3rd Ave
 Whitehorse, Yukon Y1A 1G1

Sample Description	Sample Type	Au Au-IAT-AA g/ton 0.005	Ag ppm 0.1	Al % 0.01	As ppm 5	Ba ppm 10	Bi ppm 2	Ca % 0.01	Cd ppm 0.5	Co ppm 1	Cr ppm 1	Cu ppm 1	Fe % 0.01	Hg ppm 3	K % 0.01
		30-AR-TR	30-AR-TR	30-AR-TR	30-AR-TR	30-AR-TR	30-AR-TR	30-AR-TR	30-AR-TR	30-AR-TR	30-AR-TR	30-AR-TR	30-AR-TR	30-AR-TR	30-AR-TR
QC-V1008-01039-0001-BLK	01 Rock	<0.01	<0.1	<0.01	<5	<10	<2	<0.01	<0.5	<1	<1	<1	<0.01	<3	<0.01
QC-V1008-01039-0003-BLK	01 Dup	0.37	0.4	0.37	6	99	<2	0.03	<0.5	<1	65	2	0.44	<3	0.31
STD-OREAS-45P-AR expected		<0.01	<0.1	<0.01	<5	<10	<2	<0.01	<0.5	<1	67	2	0.44	<3	0.31
STD-OREAS-45P-AR result		0.3	0.3	4.06	4	204	0	0.28	0.1	107	892	674	<0.01	<3	<0.01
QC-V1008-01040-0002-BLK	01 Dup	0.015	0.3	4.06	<5	204	<2	0.28	<0.5	108	896	732	>10	<3	0.08
		0.006													
		<0.005													



INSPECTORATE

#200 - 11620 Horseshoe Way
Richmond, British Columbia V7A 4V5
Canada

Certificate of Analysis

10-360-02723-01

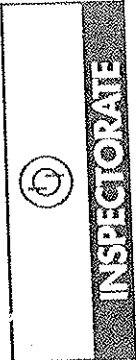
Castilian Resources Ltd.
3151BV 3rd Ave
Whitehorse, Yukon Y1A 1G1

Description	Sample Type	La	Mg	Mn	Mo	Na	Ni	P	Pb	Sb	Sc	Sr	Tl	Tl	V
		30-AR-TR ppm	30-AR-TR %	30-AR-TR ppm	30-AR-TR ppm	30-AR-TR %	30-AR-TR ppm	30-AR-TR ppm	30-AR-TR ppm	30-AR-TR ppm	30-AR-TR ppm	30-AR-TR ppm	30-AR-TR %	30-AR-TR ppm	30-AR-TR ppm
QC CV 1008-01039-0001-BLK		2	0.01	5	1	0.01	1	10	2	2	1	1	0.01	<10	<1
01	Rock	<2	<0.01	<5	<1	<0.01	<1	<10	<2	<2	<1	<1	<0.01	<10	<1
01 Dup		6	0.06	39	<1	0.03	2	60	6	2	2	3	<0.01	<10	3
QC V 1008-01039-0003-BLK		7	0.06	38	<1	0.03	2	60	7	<2	2	3	<0.01	<10	4
STD-OREAS-45P-AR expected		<2	<0.01	<5	<1	<0.01	<1	<10	<2	<2	<1	<1	<0.01	<10	<1
STD-OREAS-45P-AR result		82	0.15	1313	<1	0.02	292	386	19	0	56	15	0.20	<10	253

Castilian Resources Ltd.
 3151BV 3rd Ave
 Whitehorse, Yukon Y1A 1G1

Certificate of Analysis

10-360-02723-01



#200 - 11620 Horseshoe Way
 Richmond, British Columbia V7A 4V5
 Canada

Sample Description	Sample Type	W 30-AR-TR ppm	Zn 30-AR-TR ppm	Zr 30-AR-TR ppm
QC-V1008-01039-0001-BLK	01	<10	<2	<2
QC-V1008-01039-0003-BLK	01 Dup	<10	8	21
STD-OREAS-45P-AR expected		<10	8	22
STD-OREAS-45P-AR result		<10	<2	<2
			123	16
			123	



INSPECTORATE

115 West Beaver Creek, Richmond, BC V6X 1A6

Certificate of Analysis

10-360-02864-01

Inspectorate America Corporation
#200 - 11620 Horseshoe Way
Richmond, British Columbia V7A 4V5 Canada
Phone: 604-272-7818

Distribution List

Attention: Kevin Brewer
3151BV 3rd Ave
Whitehorse, Yukon Y1A 1G1
Phone: 604-812-2863
Email: kbrewer@largoresources.com

Attention: R. Cambell
Email: rcambell@largoresources.com

Attention: Bill Pearson
Email: bpearson@tucanoexploration.com

Submitted By: Castillian Resources Ltd.
3151BV 3rd Ave
Whitehorse, Yukon Y1A 1G1

Attention: Kevin Brewer


Project: PureGold
Description:

Samples	Type	Preparation Description
110	Soil	SP-SS-1K/Soils, Humus Sediments 1kg dried, sieved and riffle split

Date Received: 09/15/2010
Date Completed: 09/27/2010
Invoice:

Method	Description
30-4A-TR	30 Element, 4 Acid, ICP, Trace Level
Au-1AT-AA	Au, 1AT Fire Assay, AAS

The results of this assay were based solely upon the content of the sample submitted. Any decision to invest should be made only after the potential investment value of the claim or deposit has been determined based on the results of assays of multiple samples of geologic materials collected by the prospective investor or by a qualified person selected by him and based on an evaluation of all engineering data which is available concerning any proposed project. For our complete terms and conditions please see our website at www.inspectorate.com.

By 
David Chiu, BC Certified Assayer



INSPECTORATE

12300 160th Street, Surrey, BC V4N 1V2

#200 - 11620 Horseshoe Way

Richmond, British Columbia V7A 4V5
Canada

Certificate of Analysis

10-360-02864-01

Castillian Resources Ltd.
3151BV 3rd Ave
Whitehorse, Yukon Y1A 1G1

Sample Description	Sample Type	Au-1A1T-AA	Au	Ag	Al	As	Ba	Bi	Ca	Cd	Co	Cr	Cu	Fe	K	Le
		ppb	ppm	ppm	%	ppm	ppm	ppm	%	ppm	ppm	ppm	ppm	%	%	ppm
		5	0.5	35	0.01	30-4A-TR	30-4A-TR	30-4A-TR	30-4A-TR	30-4A-TR	30-4A-TR	30-4A-TR	30-4A-TR	30-4A-TR	30-4A-TR	30-4A-TR
1-0N	Soil	6	1.8	5.75	0.01	5	10	2	0.01	0.5	1	1	1	0.01	0.01	10
1-50N	Soil	7	2.1	5.84	0.01	5	1738	<2	0.52	<0.5	11	41	16	2.85	2.85	50
1-100N	Soil	7	0.9	6.14	0.01	5	1141	<2	0.78	<0.5	12	57	13	2.75	1.78	25
1-150N	Soil	7	2.3	6.07	0.01	5	1359	<2	0.71	<0.5	12	71	12	3.15	2.36	33
1-200N	Soil	15	1.7	5.98	0.01	5	1310	<2	0.42	<0.5	10	62	8	2.49	2.27	21
1-250N	Soil	7	2.4	6.90	0.01	30	1366	<2	0.58	<0.5	12	63	13	3.02	2.13	31
1-300N	Soil	<5	2.1	5.94	0.01	5	2447	<2	0.52	<0.5	11	87	29	3.20	2.62	41
1-350N	Soil	7	2.7	5.89	0.01	5	1144	<2	0.88	<0.5	12	52	12	2.92	1.25	27
1-400N	Soil	8	2.1	7.71	0.01	58	2049	<2	0.86	<0.5	11	59	33	2.74	1.48	40
1-450N	Soil	8	1.7	7.22	0.01	5	3159	<2	0.48	<0.5	11	99	25	2.98	3.23	41
1-500N	Soil	7	1.7	6.07	0.01	62	2191	<2	0.59	<0.5	11	75	11	2.28	3.06	22
2-0N	Soil	8	1.6	5.70	0.01	5	1448	<2	0.73	<0.5	11	59	15	2.61	2.26	28
2-50N	Soil	8	1.7	5.58	0.01	5	1140	<2	0.67	<0.5	11	61	15	2.60	1.92	30
2-100N	Soil	10	1.9	5.88	0.01	6	811	<2	0.66	<0.5	14	68	12	5.20	1.35	29
2-150N	Soil	7	1.4	4.93	0.01	59	1120	<2	0.71	<0.5	13	57	18	3.07	1.80	33
2-200N	Soil	7	1.5	6.19	0.01	7	1205	<2	0.69	<0.5	9	39	12	2.78	2.03	34
2-250N	Soil	7	1.6	6.26	0.01	5	1798	<2	0.62	<0.5	11	50	41	2.45	2.16	39
2-300N	Soil	6	2.3	6.31	0.01	5	2122	<2	0.55	<0.5	11	59	15	2.73	2.13	35
2-350N	Soil	16	2.6	5.90	0.01	15	2641	<2	0.63	<0.5	11	67	20	2.76	1.96	37
2-400N	Soil	10	2.3	6.50	0.01	5	3435	<2	0.76	<0.5	14	80	36	2.78	1.70	39
2-450N	Soil	13	2.3	5.90	0.01	5	2360	<2	0.72	<0.5	11	85	41	2.24	1.84	41
2-500N	Soil	10	2.4	6.33	0.01	5	2359	<2	0.81	<0.5	12	74	25	2.43	1.63	32
3-0N	Soil	7	1.6	6.68	0.01	5	1545	<2	0.76	<0.5	12	79	28	2.26	1.98	35
3-50N	Soil	10	2.1	6.09	0.01	5	1293	<2	0.74	<0.5	11	63	17	2.85	1.80	35
3-100N	Soil	9	2.0	6.75	0.01	38	1989	<2	0.66	<0.5	10	55	17	2.76	1.54	27
3-150N	Soil	10	1.4	6.93	0.01	17	1442	<2	0.45	<0.5	11	75	19	2.76	2.88	50
3-200N	Soil	8	1.5	6.62	0.01	5	1636	<2	0.53	<0.5	11	71	23	3.13	2.35	37
3-250N	Soil	9	1.9	6.19	0.01	14	1377	<2	0.69	<0.5	11	69	21	2.58	2.20	38
3-300N	Soil	10	2.4	6.26	0.01	5	1405	<2	0.71	<0.5	13	60	16	2.64	1.87	31
3-350N	Soil	8	1.7	6.68	0.01	5	1596	<2	0.65	<0.5	12	65	16	2.76	1.85	28
3-400N	Soil	10	2.0	7.88	0.01	5	2598	<2	0.68	<0.5	11	55	13	2.55	1.81	33
3-450N	Soil	10	2.7	6.13	0.01	5	2837	<2	0.30	<0.5	8	54	12	2.22	2.55	32
3-500N	Soil	7	2.0	6.13	0.01	5	2832	<2	0.93	<0.5	9	66	22	1.98	1.64	49
4-0N	Soil	7	1.6	6.27	0.01	5	1773	<2	0.80	<0.5	11	75	23	2.36	1.67	37
4-50N	Soil	8	1.9	6.96	0.01	5	1503	<2	0.55	<0.5	7	24	9	2.35	1.94	24
4-100N	Soil	7	2.0	8.72	0.01	26	3606	<2	0.56	<0.5	11	43	20	3.10	1.70	33
4-150N	Soil	9	2.3	6.58	0.01	5	1667	<2	0.36	<0.5	9	101	22	3.51	4.99	57
4-200N	Soil	8	2.0	5.53	0.01	5	1436	<2	0.55	<0.5	11	90	20	3.01	2.41	37
4-250N	Soil	14	2.2	5.97	0.01	6	1997	<2	0.71	<0.5	11	67	12	2.46	1.93	34
4-300N	Soil	9	2.5	7.89	0.01	8	2572	<2	0.61	<0.5	13	66	27	3.05	2.07	50
									0.43	<0.5	8	36	11	2.58	2.26	33



Certificate of Analysis

10-360-02864-01

Castillian Resources Ltd.
3151BV 3rd Ave
Whitehorse, Yukon Y1A 1G1

INSPECTORIAL

#200 - 11620 Horseshoe Way
Richmond, British Columbia V7A 4V5
Canada

Sample Description	Sample Type	Au ppb	Ag ppm	Al %	As ppm	Ba ppm	Bi ppm	Ca %	Cd ppm	Co ppm	Cr ppm	Cu ppm	Fe %	K %	La ppm
		30-4A-TR	30-4A-TR	30-4A-TR	30-4A-TR	30-4A-TR	30-4A-TR	30-4A-TR	30-4A-TR	30-4A-TR	30-4A-TR	30-4A-TR	30-4A-TR	30-4A-TR	30-4A-TR
4-350N	Soil	9	2.2	7.59	8	2686	<2	0.49	<0.5	9	37	12	2.52	0.01	49
4-400N	Soil	6	1.8	6.22	<5	2214	<2	0.65	<0.5	10	54	14	2.42	1.73	35
4-450N	Soil	6	2.9	6.01	7	3711	<2	0.74	<0.5	19	67	26	3.35	2.25	43
4-500N	Soil	11	2.4	5.65	<5	2311	<2	0.60	<0.5	9	67	17	2.30	1.73	27
5-0N	Soil	11	2.2	6.03	<5	1515	<2	0.73	<0.5	12	35	10	2.98	1.89	33
5-50N	Soil	17	1.9	5.37	<5	1295	<2	0.70	<0.5	12	33	8	2.68	1.66	29
5-100N	Soil	14	2.2	6.83	<5	2252	<2	1.23	<0.5	17	49	17	4.36	2.21	51
5-150N	Soil	12	2.2	5.79	<5	1730	<2	1.19	<0.5	10	49	16	2.56	1.80	46
5-200N	Soil	16	1.8	6.15	14	1665	<2	0.77	<0.5	12	52	12	2.70	1.96	35
5-250N	Soil	9	2.6	6.84	99	2097	<2	0.55	<0.5	10	68	18	3.17	2.63	45
5-300N	Soil	9	2.8	6.17	47	2292	<2	0.59	<0.5	9	64	31	2.67	2.01	38
5-350N	Soil	10	2.5	6.25	6	2912	<2	0.63	<0.5	9	70	25	2.49	2.03	42
5-400N	Soil	13	2.3	6.61	<5	2835	<2	0.50	<0.5	9	54	23	2.17	1.98	44
5-450N	Soil	12	2.4	7.11	9	4744	<2	0.57	<0.5	11	103	32	3.13	2.54	55
5-500N	Soil	14	2.5	6.00	<5	2967	<2	0.62	<0.5	11	65	24	2.50	1.77	40
6-0N	Soil	6	1.7	5.81	<5	1446	<2	0.64	<0.5	11	45	13	2.68	2.40	37
6-50N	Soil	9	2.0	5.70	<5	1419	<2	0.66	<0.5	11	44	13	2.55	2.29	34
6-100N	Soil	10	1.6	5.54	<5	1467	<2	0.69	<0.5	10	43	13	2.30	2.33	48
6-150N	Soil	10	2.4	5.50	<5	1391	<2	0.62	<0.5	12	49	20	2.93	2.28	38
6-200N	Soil	14	1.8	5.34	<5	1298	<2	0.64	<0.5	11	42	15	2.46	2.24	32
6-250N	Soil	8	1.8	5.93	<5	1631	<2	0.57	<0.5	8	33	10	2.28	2.20	29
6-300N	Soil	11	0.9	5.55	<5	1772	<2	0.47	<0.5	9	35	9	2.31	2.45	28
6-350N	Soil	6	1.6	5.89	<5	1591	<2	0.50	<0.5	9	37	10	2.37	2.41	32
6-400N	Soil	9	1.9	6.78	<5	1696	<2	0.47	<0.5	10	47	24	2.94	2.33	58
6-450N	Soil	12	1.7	6.44	<5	1852	<2	0.65	<0.5	11	49	12	2.46	2.71	34
6-500N	Soil	13	1.7	6.80	<5	1872	<2	0.61	<0.5	11	53	10	2.63	2.65	40
7-0N	Soil	10	1.9	6.39	<5	2057	<2	0.31	<0.5	10	25	7	2.21	3.94	46
7-50N	Soil	12	1.7	6.14	<5	1323	<2	0.60	<0.5	12	51	12	3.09	2.11	31
7-100N	Soil	14	2.0	6.39	<5	1433	<2	0.55	<0.5	12	47	10	3.64	2.36	29
7-150N	Soil	11	2.0	5.89	<5	1573	<2	0.54	<0.5	10	35	9	2.31	2.58	34
7-200N	Soil	12	1.7	6.00	<5	1322	<2	0.64	<0.5	11	48	16	2.68	2.15	35
7-250N	Soil	12	2.0	5.96	<5	1314	<2	0.63	<0.5	11	50	12	2.95	1.82	31
7-300N	Soil	12	1.9	6.20	<5	1761	<2	0.83	<0.5	9	42	11	2.45	2.16	33
7-350N	Soil	10	2.1	6.03	<5	1628	<2	0.67	<0.5	10	42	11	2.46	2.35	28
7-400N	Soil	11	2.6	5.90	<5	1590	<2	0.70	<0.5	11	50	13	2.62	2.34	32
7-450N	Soil	12	1.8	5.79	<5	1469	<2	0.67	<0.5	10	47	12	2.49	2.17	27
7-500N	Soil	12	2.2	5.56	<5	1314	<2	0.61	<0.5	12	55	12	2.77	2.09	23
8-0N	Soil	10	2.6	5.89	<5	1673	<2	0.51	<0.5	9	35	11	2.21	2.68	45
8-50N	Soil	9	1.9	5.78	<5	1530	<2	0.58	<0.5	10	45	12	2.65	2.34	34
8-100N	Soil	11	2.4	5.60	<5	1442	<2	0.56	<0.5	10	39	9	2.54	2.30	31



INSPECTORAI

4500 - 11620 Horseshoe Way

#200 - 11620 Horseshoe Way

Richmond, British Columbia V7A 4V5

Canada

Certificate of Analysis

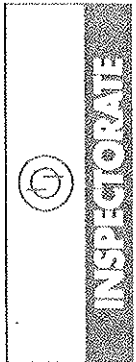
10-360-02864-01

Castilian Resources Ltd.

3151BV 3rd Ave

Whitehorse, Yukon Y1A 1G1

Sample Description	Sample Type	Au	Ag	Al	As	Ba	Bi	Ca	Cd	Co	Cr	Cu	Fe	K	La
		ppb	ppm	%	ppm	ppm	ppm	%	ppm	ppm	ppm	ppm	%	%	ppm
		5	0.5	0.01	30-4A-TR	30-4A-TR	30-4A-TR	30-4A-TR	30-4A-TR	30-4A-TR	30-4A-TR	30-4A-TR	30-4A-TR	30-4A-TR	30-4A-TR
8-150N	Soil	14	2.3	5.36	<5	1336	<2	0.57	<0.5	10	39	11	2.41	0.01	33
8-200N	Soil	17	2.0	5.63	<5	1483	<2	0.67	<0.5	10	43	12	2.46	2.06	34
8-250N	Soil	10	2.1	5.65	<5	1383	<2	0.66	<0.5	10	44	11	2.45	2.00	30
8-300N	Soil	8	2.3	5.73	<5	1373	<2	0.63	<0.5	11	48	22	2.98	1.76	32
8-350N	Soil	8	2.2	5.43	<5	1428	<2	0.69	<0.5	11	45	12	2.41	1.93	30
8-400N	Soil	19	2.3	5.72	<5	1637	<2	0.67	<0.5	10	45	11	2.42	2.05	25
8-450N	Soil	10	1.9	5.78	<5	1577	<2	0.63	<0.5	11	50	12	2.59	2.25	27
8-500N	Soil	10	1.6	6.05	<5	1629	<2	0.62	<0.5	12	61	12	2.96	2.25	30
9-0N	Soil	19	2.3	5.66	<5	1462	<2	0.64	<0.5	10	46	14	2.49	2.17	31
9-50N	Soil	7	2.3	5.98	<5	1554	<2	0.55	<0.5	10	39	10	2.34	2.43	28
9-100N	Soil	9	2.0	5.44	<5	1221	<2	0.60	<0.5	11	47	12	2.59	1.83	28
9-150N	Soil	13	2.6	5.29	<5	1590	<2	0.51	<0.5	10	35	17	2.51	2.37	43
9-200N	Soil	12	2.8	5.73	<5	1371	<2	0.58	<0.5	11	45	13	2.89	2.01	29
9-250N	Soil	12	2.6	5.35	<5	1464	<2	0.61	<0.5	10	42	10	2.60	1.96	26
9-300N	Soil	8	2.5	5.74	<5	1463	<2	0.71	<0.5	9	40	10	2.31	2.04	31
9-350N	Soil	14	2.3	5.72	<5	1369	<2	0.73	<0.5	9	42	10	2.36	1.84	30
9-400N	Soil	12	2.4	5.77	<5	1310	<2	0.74	<0.5	11	49	13	2.71	1.68	28
9-450N	Soil	9	2.4	5.67	<5	1385	<2	0.73	<0.5	11	51	12	2.59	1.83	26
9-500N	Soil	21	2.2	5.78	<5	1405	<2	0.76	<0.5	11	56	13	2.78	1.91	31
10-50N	Soil	7	2.6	5.51	<5	1297	<2	0.63	<0.5	9	40	10	1.94	2.05	23
10-100N	Soil	29	2.4	5.65	<5	1417	<2	0.49	<0.5	9	31	9	1.61	2.68	29
10-150N	Soil	38	1.7	5.75	<5	1387	<2	0.61	<0.5	11	45	14	2.73	2.21	35
10-200N	Soil	11	2.3	5.77	<5	1296	<2	0.67	<0.5	10	45	12	2.64	2.08	26
10-250N	Soil	12	2.2	5.63	<5	1424	<2	0.72	<0.5	10	42	13	2.60	1.86	31
10-300N	Soil	18	2.8	5.77	<5	1358	<2	0.79	<0.5	10	37	13	2.43	1.83	28
10-350N	Soil	8	2.0	6.16	<5	1507	<2	0.77	<0.5	10	46	12	2.61	1.95	29
10-400N	Soil	8	2.1	6.08	<5	1385	<2	0.78	<0.5	11	52	12	2.91	1.97	26
10-450N	Soil	13	2.4	5.72	<5	1312	<2	0.76	<0.5	11	49	12	2.64	1.75	29
10-500N	Soil	10	2.6	6.27	<5	1383	<2	0.77	<0.5	12	56	13	3.11	1.99	28
10-500N	Soil	9	2.6	6.44	<5	1481	<2	0.75	<0.5	14	63	17	3.55	1.99	32



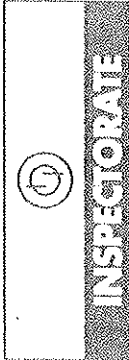
Certificate of Analysis

10-360-02864-01

Castilian Resources Ltd.
3151BV 3rd Ave
Whitehorse, Yukon Y1A 1G1

#200 - 11620 Horseshoe Way
Richmond, British Columbia V7A 4V5
Canada

Sample Description	Sample Type	Mg	Mo	Na	Ni	P	Pb	Sb	Sc	Sr	Ti	Tl	V	W
		30-4A-TR %	30-4A-TR ppm	30-4A-TR %	30-4A-TR ppm	30-4A-TR ppm	30-4A-TR ppm	30-4A-TR ppm	30-4A-TR ppm	30-4A-TR ppm	30-4A-TR ppm	30-4A-TR ppm	30-4A-TR ppm	30-4A-TR ppm
1-0N Soil	1	0.62	4	1.31	<1	357	50	<5	<1	153	<10	<10	70	<10
1-50N Soil	4	0.71	312	1.16	<1	289	13	<5	<1	168	<10	<10	105	<10
1-100N Soil	4	0.80	301	1.07	<1	580	3	<5	<1	161	<10	<10	110	<10
1-150N Soil	3	0.51	271	1.53	<1	344	<2	<5	<1	102	<10	<10	106	<10
1-200N Soil	4	0.59	302	1.40	<1	498	<2	<5	<1	135	<10	<10	103	<10
1-250N Soil	9	0.77	281	0.80	<1	779	<2	<5	<1	142	<10	<10	156	<10
1-300N Soil	5	0.71	286	1.20	<1	477	<2	<5	<1	182	<10	<10	106	<10
1-350N Soil	8	0.68	326	1.01	<1	677	17	<5	<1	233	<10	<10	136	<10
1-400N Soil	9	1.15	498	0.92	<1	788	<2	<5	<1	164	<10	<10	166	<10
1-450N Soil	5	1.11	274	1.10	<1	392	<2	<5	<1	124	<10	<10	113	<10
1-500N Soil	6	0.96	273	1.15	<1	277	7	<5	<1	161	<10	<10	105	<10
2-0N Soil	3	0.71	265	1.14	<1	259	11	<5	<1	157	<10	<10	105	<10
2-50N Soil	4	0.74	455	1.02	<1	594	5	<5	<1	137	<10	<10	148	<10
2-100N Soil	5	0.79	307	1.09	<1	267	29	<5	<1	162	<10	<10	110	<10
2-150N Soil	4	0.55	335	1.18	<1	421	31	<5	<1	197	<10	<10	76	<10
2-200N Soil	5	0.75	255	1.14	<1	473	16	<5	<1	166	<10	<10	99	<10
2-250N Soil	5	0.78	287	1.23	<1	302	9	<5	<1	143	<10	<10	107	<10
2-300N Soil	6	0.80	242	1.13	<1	372	7	<5	<1	174	<10	<10	129	<10
2-350N Soil	11	0.78	317	0.89	<1	615	4	<5	<1	218	<10	<10	166	<10
2-400N Soil	10	0.81	238	0.80	<1	749	<2	<5	<1	191	<10	<10	193	<10
2-450N Soil	7	0.80	235	1.06	<1	412	<2	<5	<1	189	<10	<10	158	<10
2-500N Soil	7	0.83	256	1.02	<1	505	<2	<5	<1	208	<10	<10	141	<10
3-0N Soil	3	1.01	322	1.38	<1	404	<2	<5	<1	151	<10	<10	100	<10
3-50N Soil	3	0.71	286	1.68	<1	506	5	<5	<1	138	<10	<10	95	<10
3-100N Soil	4	0.80	385	0.97	<1	785	14	<5	<1	142	<10	<10	111	<10
3-150N Soil	5	0.80	315	0.77	<1	805	13	<5	<1	142	<10	<10	115	<10
3-200N Soil	4	0.95	314	1.29	<1	580	4	<5	<1	150	<10	<10	104	<10
3-250N Soil	4	0.81	280	1.43	<1	465	8	<5	<1	148	<10	<10	103	<10
3-300N Soil	4	0.78	284	1.41	<1	275	6	<5	<1	146	<10	<10	100	<10
3-350N Soil	4	0.86	243	1.54	<1	324	3	<5	<1	146	<10	<10	95	<10
3-400N Soil	6	0.76	176	1.90	<1	517	4	<5	<1	142	<10	<10	102	<10
3-450N Soil	8	0.74	179	0.66	<1	696	2	<5	<1	208	<10	<10	147	<10
3-500N Soil	7	0.80	290	1.02	<1	451	<2	<5	<1	226	<10	<10	170	<10
4-0N Soil	3	0.59	239	1.83	<1	484	4	<5	<1	109	<10	<10	50	<10
4-50N Soil	4	0.71	346	1.26	<1	531	6	<5	<1	125	<10	<10	99	<10
4-100N Soil	10	1.44	296	0.51	<1	1321	3	<5	<1	130	<10	<10	209	<10
4-150N Soil	5	0.83	248	1.54	<1	734	5	<5	<1	148	<10	<10	126	<10
4-200N Soil	4	0.80	240	1.37	<1	449	4	<5	<1	151	<10	<10	106	<10
4-250N Soil	5	0.88	463	0.97	<1	576	10	<5	<1	140	<10	<10	123	<10
4-300N Soil	5	1.02	524	1.40	<1	501	4	<5	<1	121	<10	<10	74	<10



15, rue de la Loi, 100, Québec, Québec

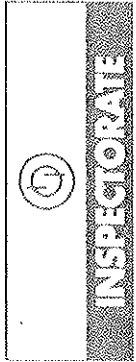
#200 - 11620 Horseshoe Way
 Richmond, British Columbia V7A 4V5
 Canada

Certificate of Analysis

10-360-02864-01

Castilian Resources Ltd.
 3151BV 3rd Ave
 Whitehorse, Yukon Y1A 1G1

Sample Description	Sample Type	Mg		Mn		Mo		Na		Ni		P		Pb		Sb		Sc		Sr		Ti		V		W	
		30-4A-TR	%	30-4A-TR	ppm	30-4A-TR	ppm	30-4A-TR	%	30-4A-TR	ppm	30-4A-TR	ppm	30-4A-TR	ppm	30-4A-TR	ppm	30-4A-TR	ppm	30-4A-TR	ppm	30-4A-TR	ppm	30-4A-TR	ppm	30-4A-TR	ppm
4-350N	Soil	0.97		212	5			1.52		<1		408		7		<5		<1		123		<10		67		<10	
4-400N	Soil	0.79		212	5			1.70		<1		347		3		<5		<1		156		<10		109		<10	
4-450N	Soil	0.93		942	10			1.17		6		983		3		<5		<1		200		<10		185		<10	
4-500N	Soil	0.73		184	5			1.44		<1		422		<2		<5		<1		176		<10		135		<10	
5-0N	Soil	0.72		262	3			1.59		<1		534		2		<5		<1		148		<10		80		<10	
5-50N	Soil	0.65		246	3			1.50		<1		342		<2		<5		<1		146		<10		81		<10	
5-100N	Soil	1.01		512	4			1.33		<1		1119		<2		<5		<1		203		<10		105		<10	
5-150N	Soil	0.77		480	3			1.20		<1		753		4		<5		<1		170		<10		77		<10	
5-200N	Soil	0.81		464	4			1.54		<1		571		<2		<5		<1		168		<10		92		<10	
5-250N	Soil	0.89		296	5			1.29		<1		628		3		<5		<1		153		<10		128		<10	
5-300N	Soil	0.83		287	5			1.14		<1		686		5		<5		<1		145		<10		129		<10	
5-350N	Soil	0.88		173	7			1.09		<1		781		6		<5		<1		141		<10		163		<10	
5-400N	Soil	0.81		177	5			1.21		<1		701		4		<5		<1		142		<10		119		<10	
5-450N	Soil	0.86		188	13			0.73		<1		933		7		<5		<1		445		<10		244		<10	
5-500N	Soil	0.75		213	7			0.96		<1		865		4		<5		<1		204		<10		159		<10	
6-0N	Soil	0.82		257	4			1.36		<1		422		8		<5		<1		140		<10		90		<10	
6-50N	Soil	0.82		288	3			1.46		<1		245		4		<5		<1		147		<10		81		<10	
6-100N	Soil	0.73		263	3			1.50		<1		282		7		<5		<1		151		<10		76		<10	
6-150N	Soil	0.77		330	3			1.22		<1		333		8		<5		<1		135		<10		93		<10	
6-200N	Soil	0.69		256	3			1.31		<1		221		4		<5		<1		139		<10		80		<10	
6-250N	Soil	0.69		199	3			1.64		<1		439		5		<5		<1		127		<10		64		<10	
6-300N	Soil	0.72		192	3			1.64		<1		379		5		<5		<1		103		<10		66		<10	
6-350N	Soil	0.63		284	3			1.63		<1		399		4		<5		<1		109		<10		69		<10	
6-400N	Soil	0.77		256	4			1.08		<1		902		14		<5		<1		110		<10		82		<10	
6-450N	Soil	0.85		239	3			1.62		<1		345		3		<5		<1		131		<10		79		<10	
6-500N	Soil	0.89		232	4			1.53		<1		251		<2		<5		<1		137		<10		85		<10	
7-0N	Soil	0.73		571	3			0.85		<1		503		22		<5		<1		130		<10		54		<10	
7-50N	Soil	0.85		294	4			1.27		<1		204		8		<5		<1		132		<10		99		<10	
7-100N	Soil	0.84		276	3			1.20		<1		260		10		<5		<1		118		<10		93		<10	
7-150N	Soil	0.69		229	3			1.50		<1		252		7		<5		<1		123		<10		70		<10	
7-200N	Soil	0.81		238	3			1.22		<1		334		9		<5		<1		139		<10		94		<10	
7-250N	Soil	0.78		271	4			1.28		<1		266		3		<5		<1		141		<10		95		<10	
7-300N	Soil	0.86		222	3			1.47		<1		271		4		<5		<1		167		<10		75		<10	
7-350N	Soil	0.81		236	3			1.46		<1		281		3		<5		<1		138		<10		76		<10	
7-400N	Soil	0.88		226	3			1.53		<1		458		4		<5		<1		133		<10		82		<10	
7-450N	Soil	0.79		221	3			1.56		<1		332		<2		<5		<1		129		<10		81		<10	
7-500N	Soil	0.84		241	4			1.55		<1		365		<2		<5		<1		122		<10		88		<10	
8-0N	Soil	0.73		219	4			1.47		<1		292		23		<5		<1		125		<10		64		<10	
8-50N	Soil	0.82		263	3			1.32		<1		207		7		<5		<1		132		<10		82		<10	
8-100N	Soil	0.69		242	3			1.20		<1		274		11		<5		<1		129		<10		82		<10	



#200 - 11620 Horseshoe Way
 Richmond, British Columbia V7A 4V5
 Canada

Certificate of Analysis

10-360-02864-01

Castillian Resources Ltd.
 3151BV 3rd Ave
 Whitehorse, Yukon Y1A 1G1

Sample Description	Sample Type	Mg %	Mn ppm	Mo ppm	Na %	Ni ppm	P ppm	Pb ppm	Sb ppm	Sc ppm	Sr ppm	Ti %	V ppm	W ppm
		30-4A-TR	30-4A-TR	30-4A-TR	30-4A-TR	30-4A-TR	30-4A-TR	30-4A-TR	30-4A-TR	30-4A-TR	30-4A-TR	30-4A-TR	30-4A-TR	30-4A-TR
		0.01	5	1	0.01	1	10	2	5	1	10	0.01	10	10
8-150N	Soil	0.69	248	3	1.29	<1	272	6	<5	<1	127	<10	77	<10
8-200N	Soil	0.76	243	3	1.34	<1	326	5	<5	<1	139	<10	83	<10
8-250N	Soil	0.74	241	3	1.30	<1	261	<2	<5	<1	141	<10	83	<10
8-300N	Soil	0.76	263	3	1.08	<1	484	6	<5	<1	134	<10	96	<10
8-350N	Soil	0.74	244	3	1.43	<1	218	4	<5	<1	146	<10	82	<10
8-400N	Soil	0.86	248	4	1.51	<1	312	<2	<5	<1	133	<10	78	<10
8-450N	Soil	0.91	275	3	1.37	<1	451	<2	<5	<1	128	<10	85	<10
8-500N	Soil	0.96	280	3	1.54	<1	419	<2	<5	<1	120	<10	91	<10
9-0N	Soil	0.79	261	3	1.40	<1	228	4	<5	<1	144	<10	84	<10
9-50N	Soil	0.75	243	3	1.50	<1	253	6	<5	<1	127	<10	74	<10
9-100N	Soil	0.71	243	3	1.38	<1	190	4	<5	<1	133	<10	90	<10
9-150N	Soil	0.64	258	3	1.19	<1	668	23	<5	<1	115	<10	74	<10
9-200N	Soil	0.73	244	3	1.26	<1	287	9	<5	<1	131	<10	95	<10
9-250N	Soil	0.72	254	4	1.33	<1	300	4	<5	<1	140	<10	82	<10
9-300N	Soil	0.74	241	3	1.41	<1	246	2	<5	<1	157	<10	77	<10
9-350N	Soil	0.73	239	3	1.41	<1	244	<2	<5	<1	158	<10	81	<10
9-400N	Soil	0.79	264	3	1.34	<1	330	<2	<5	<1	154	<10	93	<10
9-450N	Soil	0.81	254	3	1.51	<1	300	<2	<5	<1	148	<10	87	<10
9-500N	Soil	0.85	281	3	1.54	<1	347	<2	<5	<1	153	<10	90	<10
10-0N	Soil	0.60	228	3	1.33	<1	271	3	<5	<1	141	<10	83	<10
10-50N	Soil	0.56	404	3	1.20	<1	371	13	<5	<1	129	<10	67	<10
10-100N	Soil	0.79	288	3	1.20	<1	633	6	<5	<1	132	<10	91	<10
10-150N	Soil	0.71	399	4	1.28	<1	930	14	<5	<1	149	<10	96	<10
10-200N	Soil	0.76	304	3	1.39	<1	409	9	<5	<1	154	<10	82	<10
10-250N	Soil	0.72	307	3	1.59	<1	392	10	<5	<1	165	<10	75	<10
10-300N	Soil	0.84	257	3	1.65	<1	254	7	<5	<1	162	<10	80	<10
10-350N	Soil	0.87	297	3	1.39	<1	348	<2	<5	<1	161	<10	98	<10
10-400N	Soil	0.80	280	3	1.45	<1	298	4	<5	<1	164	<10	86	<10
10-450N	Soil	0.89	400	3	1.34	<1	650	4	<5	<1	155	<10	104	<10
10-500N	Soil	0.96	353	4	1.24	<1	575	3	<5	<1	147	<10	110	<10



INSPECTORATE

Certificate of Analysis

10-360-02864-01

Castillian Resources Ltd.
3151BV 3rd Ave
Whitehorse, Yukon Y1A 1G1

10-360-02864-01

#200 - 11620 Horseshoe Way
Richmond, British Columbia V7A 4V5
Canada

Sample Description	Sample Type	Zn		Zr	
		30-4A-TR ppm	2	30-4A-TR ppm	1
1-0N	Soil	107		91	
1-50N	Soil	59		74	
1-100N	Soil	82		74	
1-150N	Soil	53		68	
1-200N	Soil	63		73	
1-250N	Soil	122		94	
1-300N	Soil	64		65	
1-350N	Soil	110		79	
1-400N	Soil	114		108	
1-450N	Soil	67		75	
1-500N	Soil	59		78	
2-0N	Soil	66		75	
2-50N	Soil	71		66	
2-100N	Soil	63		76	
2-150N	Soil	65		77	
2-200N	Soil	77		76	
2-250N	Soil	76		77	
2-300N	Soil	82		84	
2-350N	Soil	106		97	
2-400N	Soil	102		106	
2-450N	Soil	80		88	
2-500N	Soil	87		85	
3-0N	Soil	67		63	
3-50N	Soil	62		59	
3-100N	Soil	109		86	
3-150N	Soil	97		79	
3-200N	Soil	84		72	
3-250N	Soil	72		71	
3-300N	Soil	64		69	
3-350N	Soil	65		65	
3-400N	Soil	81		63	
3-450N	Soil	66		82	
3-500N	Soil	86		92	
4-0N	Soil	62		56	
4-50N	Soil	72		60	
4-100N	Soil	156		94	
4-150N	Soil	77		79	
4-200N	Soil	62		72	
4-250N	Soil	92		78	
4-300N	Soil	76		56	



INSPECTORATE

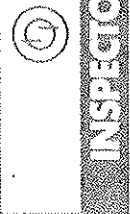
Certificate of Analysis

10-360-02864-01

Castillian Resources Ltd.
3151BV 3rd Ave
Whitehorse, Yukon Y1A 1G1

#200 - 11620 Horseshoe Way
Richmond, British Columbia V7A 4V5
Canada

Sample Description	Sample Type	Zn		Zr	
		30-4A-TR ppm	2	30-4A-TR ppm	1
4-350N Soil	Soil	74		57	
4-400N Soil	Soil	68		76	
4-450N Soil	Soil	210		145	
4-500N Soil	Soil	74		79	
5-0N Soil	Soil	68		90	
5-50N Soil	Soil	57		85	
5-100N Soil	Soil	103		109	
5-150N Soil	Soil	73		66	
5-200N Soil	Soil	79		75	
5-250N Soil	Soil	95		72	
5-300N Soil	Soil	102		82	
5-350N Soil	Soil	88		92	
5-400N Soil	Soil	77		90	
5-450N Soil	Soil	139		133	
5-500N Soil	Soil	90		107	
6-0N Soil	Soil	60		80	
6-50N Soil	Soil	57		75	
6-100N Soil	Soil	53		79	
6-150N Soil	Soil	63		77	
6-200N Soil	Soil	53		76	
6-250N Soil	Soil	52		66	
6-300N Soil	Soil	58		66	
6-350N Soil	Soil	57		72	
6-400N Soil	Soil	65		66	
6-450N Soil	Soil	58		68	
6-500N Soil	Soil	62		69	
7-0N Soil	Soil	63		92	
7-50N Soil	Soil	64		74	
7-100N Soil	Soil	64		83	
7-150N Soil	Soil	52		85	
7-200N Soil	Soil	57		76	
7-250N Soil	Soil	58		74	
7-300N Soil	Soil	58		65	
7-350N Soil	Soil	55		71	
7-400N Soil	Soil	62		76	
7-450N Soil	Soil	54		76	
7-500N Soil	Soil	61		80	
8-0N Soil	Soil	58		90	
8-50N Soil	Soil	59		82	
8-100N Soil	Soil	52		91	



A.B. 800-939-4600

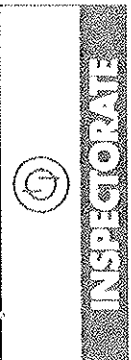
#200 - 11620 Horseshoe Way
Richmond, British Columbia V7A 4V5
Canada

Certificate of Analysis

10-360-02864-01

Castillian Resources Ltd.
3151BV 3rd Ave
Whitehorse, Yukon Y1A 1G1

Sample Description	Sample Type	Zn		Zn
		30-4A-TR ppm	2	30-4A-TR ppm
		1		
8-150N	Soil	55	82	
8-200N	Soil	59	77	
8-250N	Soil	52	77	
8-300N	Soil	66	71	
8-350N	Soil	54	72	
8-400N	Soil	57	64	
8-450N	Soil	58	69	
8-500N	Soil	67	63	
9-0N	Soil	54	80	
9-50N	Soil	53	82	
9-100N	Soil	54	79	
9-150N	Soil	63	81	
9-200N	Soil	57	76	
9-250N	Soil	56	73	
9-300N	Soil	51	65	
9-350N	Soil	51	65	
9-400N	Soil	60	67	
9-450N	Soil	59	69	
9-500N	Soil	63	72	
10-0N	Soil	42	75	
10-50N	Soil	61	87	
10-100N	Soil	63	82	
10-150N	Soil	60	72	
10-200N	Soil	59	66	
10-250N	Soil	54	64	
10-300N	Soil	58	62	
10-350N	Soil	65	65	
10-400N	Soil	57	67	
10-450N	Soil	69	66	
10-500N	Soil	79	68	



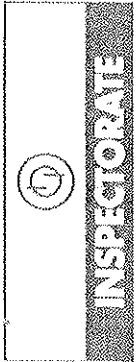
#200 - 11620 Horseshoe Way
 Richmond, British Columbia V7A 4V5
 Canada

Certificate of Analysis

10-360-02864-01

Castilian Resources Ltd.
 3151BV 3rd Ave
 Whitehorse, Yukon Y1A 1G1

Sample Description	Au ppb	Au-1AT-AA 5	Ag ppm	Al %	As ppm	Ba ppm	Bi ppm	Ca %	Cd ppm	Co ppm	Cr ppm	Cu ppm	Fe %	K %	La ppm
1-0N Soil	5		1.8	5.75	3.5	1738	<2	0.52	<0.5	11	41	16	2.83	2.85	30
1-0N Dup			2.0	5.78	3.6	1743	<2	0.52	<0.5	11	41	16	2.84	2.86	32
QC1009-00432-0002-BLK			<0.5	<0.01	<5	<10	<2	<0.01	<0.5	<1	<1	<1	<0.01	<0.01	<10
STD-ME-8 expected			61.7									1030			
2-350N Soil			60.9	4.45	2410	500	<2	6.57	79.4	15	48	967	3.70	1.41	19
2-350N Dup			2.6	5.90	1.5	2641	<2	0.76	<0.5	14	80	36	2.78	1.70	39
QC1009-00432-0005-BLK			<0.5	<0.01	<5	<10	<2	<0.01	<0.5	<1	<1	<1	<0.01	<0.01	<10
STD-ME-6 expected			101.0									6130			
4-150N Soil			97.2	5.00	206	234	<2	1.38	<0.5	15	54	6132	5.71	1.14	19
4-150N Dup			2.3	6.58	<5	1667	<2	0.55	<0.5	11	90	20	3.01	2.41	37
QC1009-00432-0008-BLK			1.5	6.61	<5	1690	<2	0.55	<0.5	11	90	20	3.02	2.42	39
STD-ME-6 expected			<0.5	<0.01	<5	<10	<2	<0.01	<0.5	<1	<1	<1	<0.01	<0.01	<10
5-500N Soil			97.0	4.97	207	255	<2	1.39	<0.5	15	59	6196	5.85	1.17	19
5-500N Dup			2.5	6.00	<5	2967	<2	0.62	<0.5	11	65	24	2.50	1.77	40
QC1009-00432-0011-BLK			<0.5	<0.01	<5	<10	<2	<0.01	<0.5	<1	<1	<1	<0.01	<0.01	<10
STD-ME-8 expected			61.7									1030			
7-300N Soil			58.9	4.40	2402	468	<2	6.47	79.9	15	48	956	3.65	1.38	18
7-300N Dup			1.9	6.20	<5	1761	<2	0.83	<0.5	9	42	11	2.43	2.16	33
QC1009-00432-0014-BLK			<0.5	<0.01	<5	<10	<2	<0.01	<0.5	<1	<1	<1	<0.01	<0.01	<10
STD-ME-8 expected			61.7									1030			
9-100N Soil			60.3	4.45	2451	312	<2	6.54	86.8	15	51	973	3.72	1.40	19
9-100N Dup			2.0	5.44	<5	1221	<2	0.60	<0.5	11	47	12	2.59	1.85	28
QC1009-00432-0017-BLK			<0.5	<0.01	<5	<10	<2	<0.01	<0.5	<1	<1	<1	<0.01	<0.01	<10
STD-ME-8 expected			61.7									1030			
10-450N Soil			61.0	4.44	2450	292	<2	6.56	81.1	15	49	978	3.67	1.40	18
10-450N Dup			2.6	6.27	<5	1383	<2	0.77	<0.5	12	56	13	3.11	1.99	28
QC1009-00432-0020-BLK			2.8	6.31	<5	1405	<2	0.77	<0.5	12	56	13	3.12	2.01	28
STD-ME-6 expected			<0.5	<0.01	<5	<10	<2	<0.01	<0.5	<1	<1	<1	<0.01	<0.01	<10
STD-ME-6 result			97.5	5.35	220	248	<2	1.48	<0.5	15	54	6593	6.11	1.21	30
1-0N Dup	6														
STD-Oxi67 expected	9														
STD-Oxi67 result	1817														
2-350N Dup	16														
2-350N Dup	10														



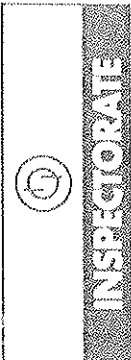
Certificate of Analysis

10-360-02864-01

Castillian Resources Ltd.
3151BV 3rd Ave
Whitehorse, Yukon Y1A 1G1

#200 - 11620 Horseshoe Way
Richmond, British Columbia V7A 4V5
Canada

Sample Description	Sample Type	Au ppb	Au-1AT-AA 30-4A-TR	Ag ppm	Al %	As ppm	Ba ppm	Bi ppm	Ca %	Cd ppm	Co ppm	Cr ppm	Cu ppm	Fe %	K %	La ppm
QCV1009-00433-0004-BLK		<5		0.5	0.01	5	10	2	0.01	0.5	1	1	1	0.01	0.01	10
4-150N	Soil	9														
4-150N Dup		6														
STD-Oxi67 expected		1817														
STD-Oxi67 result		1698														
5-300N	Soil	14														
5-300N Dup		9														
QCV1009-00433-0008-BLK		6														
7-300N	Soil	12														
7-300N Dup		8														
STD-Oxi67 expected		1817														
STD-Oxi67 result		1727														
9-100N	Soil	9														
9-100N Dup		11														
QCV1009-00433-0012-BLK		6														
10-450N	Soil	10														
10-450N Dup		8														
QCV1009-00433-0014-BLK		<5														
10-450N Dup		8														
STD-Oxi67 expected		1817														
STD-Oxi67 result		1760														



Certificate of Analysis

10-360-02864-01

Castillian Resources Ltd.
3151BV 3rd Ave
Whitehorse, Yukon Y1A 1G1

#200 - 11620 Horseshoe Way
Richmond, British Columbia V7A 4V5
Canada

Sample Description	Mg	Mn	Mo	Na	Ni	P	Pb	Sb	Sc	Sr	Ti	Ti	V	W
	30-4A-TR	30-4A-TR	30-4A-TR	30-4A-TR	30-4A-TR	30-4A-TR	30-4A-TR	30-4A-TR	30-4A-TR	30-4A-TR	30-4A-TR	30-4A-TR	30-4A-TR	30-4A-TR
Type	%	ppm	ppm	%	ppm	ppm	ppm	ppm	ppm	ppm	ppm	ppm	ppm	ppm
1-0N Soil	0.62	519	4	1.31	<1	357	50	<5	<1	153	<10	<10	76	<10
1-0N Dup	0.62	524	4	1.33	<1	360	50	<5	<1	154	<10	<10	70	<10
QCVI009-00432-0002-BLK	<0.01	<5	<1	<0.01	<1	<10	<2	<5	<1	<1	<10	<10	<1	<10
STD-ME-8 result	0.75	2936	7	1.23	<1	592	>10000	47	<1	372	<10	<10	57	<10
2-350N Soil	0.78	317	11	0.89	<1	615	4	<5	<1	218	<10	<10	166	<10
2-350N Dup	0.78	315	11	0.90	<1	607	3	<5	<1	217	<10	<10	165	<10
QCVI009-00432-0005-BLK	<0.01	<5	<1	<0.01	<1	<10	<2	<5	<1	<1	<10	<10	<1	<10
STD-ME-6 expected	1.18	1754	23	1.59	<1	425	>10000	413	<1	175	<10	<10	78	<10
STD-ME-6 result	0.83	248	5	1.54	<1	734	5	<5	<1	148	<10	<10	126	<10
4-150N Dup	0.84	249	5	1.57	<1	747	5	<5	<1	148	<10	<10	126	<10
QCVI009-00432-0008-BLK	<0.01	<5	<1	<0.01	<1	<10	<2	<5	<1	<1	<10	<10	<1	<10
STD-ME-6 expected	1.20	1786	22	1.62	<1	438	>10000	397	<1	179	<10	<10	80	<10
STD-ME-6 result	0.75	213	7	0.96	<1	865	4	<5	<1	204	<10	<10	159	<10
5-500N Dup	0.76	215	7	0.96	<1	855	4	<5	<1	204	<10	<10	159	<10
QCVI009-00432-0011-BLK	<0.01	<5	<1	<0.01	<1	<10	<2	<5	<1	<1	<10	<10	<1	<10
STD-ME-8 expected	0.74	2893	7	1.23	<1	593	>10000	48	<1	375	<10	<10	58	<10
STD-ME-8 result	0.86	222	3	1.47	<1	271	4	<5	<1	167	<10	<10	75	<10
7-300N Dup	0.86	223	3	1.48	<1	273	4	<5	<1	168	<10	<10	75	<10
QCVI009-00432-0014-BLK	<0.01	<5	<1	<0.01	<1	<10	<2	<5	<1	<1	<10	<10	<1	<10
STD-ME-8 expected	0.75	2944	7	1.26	<1	599	>10000	48	<1	385	<10	<10	58	<10
STD-ME-8 result	0.71	243	3	1.38	<1	190	4	<5	<1	133	<10	<10	90	<10
9-100N Dup	0.71	247	3	1.38	<1	192	4	<5	<1	134	<10	<10	90	<10
QCVI009-00432-0017-BLK	<0.01	<5	<1	<0.01	<1	<10	<2	<5	<1	<1	<10	<10	<1	<10
STD-ME-8 expected	0.75	2921	7	1.25	<1	601	>10000	48	<1	381	<10	<10	58	<10
STD-ME-8 result	0.89	400	3	1.34	<1	630	4	<5	<1	155	<10	<10	104	<10
10-450N Dup	0.91	401	3	1.34	<1	673	4	<5	<1	156	<10	<10	104	<10
QCVI009-00432-0020-BLK	<0.01	<5	<1	<0.01	<1	<10	<2	<5	<1	<1	<10	<10	<1	<10
STD-ME-6 expected	1.27	1888	24	1.75	<1	450	>10000	435	<1	188	<10	<10	82	<10
STD-ME-6 result														



INSPECTOR

Certificate of Analysis

10-360-02864-01

Castillian Resources Ltd.
3151BV 3rd Ave
Whitehorse, Yukon Y1A 1G1

#200 - 11620 Horseshoe Way
Richmond, British Columbia V7A 4V5
Canada

Sample Description	Sample Type	Zn		Zr	
		30-4A-TR ppm	2	30-4A-TR ppm	1
1-0N Dup	Soil	107		91	
QCV1009-00432-0002-BLK		108		93	
STD-ME-8 expected		<2		<1	
STD-ME-8 result		>10000		54	
2-350N Dup	Soil	106		97	
QCV1009-00432-0003-BLK		106		97	
STD-ME-6 expected		<2		<1	
STD-ME-6 result		5170		57	
4-150N Dup	Soil	77		79	
QCV1009-00432-0008-BLK		77		80	
STD-ME-6 expected		<2		<1	
STD-ME-6 result		5170		55	
5-500N Dup	Soil	90		107	
QCV1009-00432-0011-BLK		90		108	
STD-ME-8 expected		<2		<1	
STD-ME-8 result		19200		51	
7-300N Dup	Soil	58		65	
QCV1009-00432-0014-BLK		57		66	
STD-ME-8 expected		<2		<1	
STD-ME-8 result		19200		54	
9-100N Dup	Soil	54		79	
QCV1009-00432-0017-BLK		54		78	
STD-ME-8 expected		<2		<1	
STD-ME-8 result		19200		51	
10-450N Dup	Soil	69		66	
QCV1009-00432-0020-BLK		69		65	
STD-ME-6 expected		<2		<1	
STD-ME-6 result		5170		56	
		5597			

Appendix 2.
Statement of Qualifications – Kevin Brewer, P. Geo.

I, Kevin J. Brewer, PGeo, hereby certify that:

- 1) I am a self-employed Consulting Geologist and sole proprietor of: 39627 Yukon Inc. 6 Carnelian Court, Whitehorse, Yukon Y1A 6A3
- 2) I graduated with a Bachelor of Science (Honours) Degree in geology from Memorial University of Newfoundland (MUN), St. John's, Newfoundland, in 1984.
- 3) I am a member in good standing of the Association of Professional Engineers and Geoscientists of British Columbia (APEGBC).
- 4) I have worked as a geologist for a total of 20 years since my graduation from MUN.
- 5) I have read the definition of "qualified person" set out in National Instrument 43-101 ("NI 43-101") and certify that by reason of my education, affiliation with a professional association (as defined in NI 43-101) and past relevant work experience, I fulfill the requirements to be a "qualified person" for the purposes of NI 43-101.
- 6) I am responsible for preparation of all sections of this assessment report titled "Assessment Report on Environmental Baseline Investigations and other work Completed on Property Access Route" comprising the Northern Dancer project. I was active on-site during the majority of the 2008 exploration program.
- 7) I have not had prior involvement with the property that is the subject of the Assessment Report.
- 8) I am not aware of any material facts or material changes with respect to the subject matter of the assessment report not contained within the report, of which the omission to disclose makes the report misleading.
- 9) I am independent of the issuer applying all of the tests in section 1.5 of National Instrument 43-101.
- 10) I have read National Instrument 43-101 and Form 43-101E1; however, this Assessment Report has not been prepared in compliance with that instrument and form.
- 11) I consent to the filing of the Assessment Report with the British Columbia Mineral Titles, Ministry of Energy, Mines and Resources, Government of British Columbia.

12) The effective date of this report is June 18, 2010. Dated this 18th day of June, 2010.

"Kevin Brewer"

Kevin Brewer, MBA, BSc (Hans),
PGeo Address: 6 Carnelian Court
Whitehorse, Yukon Y1A 6A3
Telephone: 867-633-4260
Fax: 867-668-7127
E-mail: kbrewer@largoresources.com



Appendix 3
Statement of Expenditures

Castillian Resources Corp

*** ACTIVITY BY G/L ACCOUNT - ACTIVE ACCOUNTS ONLY ***
 (Amounts shown in Canadian dollars for all currencies)

Period: 01-Jan-10

Account Number: 17200

Account Date	Trans.	Source	Description	Debit	Credit
17200-ASSAYING-			Yukon Pure Gold Property : Assaying		
01/01/10			** Opening Balance **		
09/10/10	2000000306	A/P gan	Vend. INSPECTORATE rock/chips assay	200.00	
	2000000307	A/P	Vend. INSPECTORATE rock/chips assay	373.20	
	2000000308	A/P	Vend. INSPECTORATE soil, humus assay	376.60	
	2000000309	A/P	Vend. INSPECTORATE rock/chips assay	200.00	
			** Period End Balance **		
10/01/10	2000000690	A/P RD	Vend. INSPECTORATE Invoice	2,653.20	
10/04/10	2000000330	A/P gan	Vend. NL Invoice	424.70	
10/12/10	2000000691	A/P RD	Vend. INSPECTORATE Invoice	27.48	
	2000000692	A/P	Vend. INSPECTORATE Invoice	34.10	
	2000000694	A/P	Vend. INSPECTORATE Invoice	2,610.60	
10/29/10	2000000693	A/P	Vend. INSPECTORATE Invoice	120.40	
12/31/10			** Closing Balance **		
17200-FIELD CAMP-			Yukon Pure Gold Property : Field camp		
01/01/10			** Opening Balance **		
07/29/10	2000000310	A/P gan	Vend. HORIZON helicopter7/29	3,581.08	
07/30/10	2000000311	A/P	Vend. HORIZON helicopter-7/30	2,459.60	
			** Period End Balance **		
08/04/10	2000000117	A/P	Vend. HORIZON Helicopter-Jul29,30	3,047.66	
08/06/10	2000000223	A/P	Vend. CHAMBER photocopies	76.00	
08/23/10	2000000286	A/P	Vend. KEVIN equipment rental	1,387.80	
			** Period End Balance **		
09/23/10	2000000428	A/P	Vend. DAS camp sheler	99,060.74	
09/30/10	2000000437	G/L BV*	Reallocate Camp expen from DSM		99,060.74
	2000000478	G/L	reallocate Fees paid to Kevin in Jan, Cordilleran trip	2,817.60	
			** Period End Balance **		
10/04/10	2000000351	A/P	Vend. CHAMBER K.Brewer-YT Geo forum	450.00	
	2000000352	A/P	Vend. CHAMBER B.Pearson-37th YT Geo forum	380.00	
	2000000353	A/P	Vend. CHAMBER C.Hale-37th YT Geo forum	380.00	
10/11/10	2000000917	G/L WY	fees paid to Stormaway for Picton clean up	10,000.00	
			** Period End Balance **		
11/04/10	2000000526	A/P gan	Vend. KEVIN assessment filing	1,417.13	
11/19/10	2000000635	A/P	Vend. EASTERN fibre bags	750.00	
12/31/10			** Closing Balance **		

\$15734.76

17200-FM TRANSP- Yukon Pure Gold Property : Fix wing transportation
 01/01/10 ** Opening Balance **
 09/22/10 2000000283 A/P gan Vend. CANADIAN 9/16 helicopter 1,106.56
 12/31/10 ** Closing Balance **

17200-GEOLOGICAL S- TAFF Yukon Pure Gold Property : Geological staff
 01/01/10 ** Opening Balance **
 08/01/10 2000000060 A/P gan Vend. KEVIN August 2,500.00
 ** Period End Balance **
 09/01/10 2000000129 A/P Vend. KEVIN Sep 2,500.00
 09/02/10 2000000209 A/P Vend. ERINI Aug24-28, 31- 5,999.50
 Sep2
 09/03/10 2000000285 A/P Vend. KEVIN payroll for Derek 3,913.06
 Torgerson
 09/15/10 2000000390 A/P Vend. TERRY Picton Point project ~~300.00~~
 ** Period End Balance **
 10/01/10 2000000313 A/P Vend. KEVIN Oct ~~2,500.00~~
 10/19/10 2000000391 A/P Vend. TERRY Picton Point project- ~~4,000.00~~
 Oct
 ** Period End Balance **
 11/01/10 2000000406 A/P Vend. KEVIN Nov ~~2,500.00~~
 ** Period End Balance **
 12/01/10 2000000579 A/P Vend. KEVIN Dec ~~2,500.00~~
 12/31/10 2000001353 G/L WY accrued inv #53 fr IE, ~~6,012.17~~
 12/31/10 ** Closing Balance **

17200-SURVEY- Yukon Pure Gold Property : Surveying
 01/01/10 ** Opening Balance **
 10/31/10 2000000541 A/P gan Vend. REFLEX survey record ~~2,500.00~~
 books
 2000000542 A/P Vend. REFLEX survey instrument ~~2,500.00~~
 ** Period End Balance **
 11/30/10 2000000655 A/P Vend. REFLEX EZSHOT survey- ~~2,500.00~~
 11/1-30
 ** Period End Balance **
 12/30/10 2000000785 A/P RD Vend. REFLEX Invoice ~~2,987.28~~
 12/31/10 ** Closing Balance **

17200-TRAVEL- Yukon Pure Gold Property : TRAVEL
 01/01/10 ** Opening Balance **
 08/23/10 2000000225 A/P gan Vend. BONANZA room-Derek 544.00
 Torgerson8/17-22
 2000000286 A/P Vend. KEVIN mileage-Derek T 678.50
 ** Period End Balance **
 09/03/10 2000000312 A/P Vend. BONANZA E.Petroutsas- 623.00
 Aug23-29
 2000000312 A/P Vend. BONANZA E.Petroutsas- 99.00
 Sep1
 2000000312 A/P Vend. BONANZA K.Brewer- 178.00
 Aug31,Sep1
 09/15/10 2000000280 A/P Vend. KEVIN trip to Picton Point ~~650.00~~

P.1 = \$15734.76
 P.2 = \$18141.62
\$33876.38

#18141.62

Appendix 4 References

Ash, C., (2009) Unpublished report. Ophiolites in the Klondike region and their Association with Gold Mineralization. Pers conversation.

Database, Yukon MINFILE - 115N & O - Stewart YK, R. Deklerk (compiler), 2009, YGS/DIAND.

Annual Report Paper, Lone Star property, west-central Yukon, T. Bremner and B. LeBarge, 1991, YGS/DIAND. In: Yukon Exploration 1990,

Bulletin, 14, Placer geology of the Stewart YK (115N&O) and part of the Dawson (116B&C) map areas, west-central Yukon, Canada, G.W. Lowey, 2004, YGS/DIAND.

Open File, 2006-1, Tectonic assemblage map of Yukon-Tanana and related terranes in Yukon and northern British Columbia (1:1,000,000 scale), M. Colpron (compiler), 2006, YGS/DIAND.

Open File, 2002-6, Stewart YK Placer Project, Resource Appraisal Map for Placer Gold in the Stewart YK (115N/O) and Part of the Dawson (116B/C) Map Areas, Yukon (1:250 000 scale), G.W. Lowey, S. Deforest, P. Lipovsky, 2002, YGS/DIAND.

Open File, 2002-16, Multisensor Airborne Geophysical Survey, Stewart YK Area (115O&N and 116B), 2002, YGS/DIAND. Shelf No. 15-62, Price: \$150.00, Also know as GSC Open File 4310

Open File, 4307, Multisensor Airborne Geophysical Survey, Stewart YK Area (Parts of 115O/6), 2002, GSC. Shelf No. 15-59, Also know as YGS/DIAND Open File 2002-13

Bostock, H.S., 1942, Ogilvie, Yukon Territory: Geological Survey of Canada, Map 711A, scale 1:250,000.

Colpron, M., and Yukon-Tanana Working Group, 2001, Ancient Pacific Margin — an update on stratigraphic comparison of potential volcanogenic massive sulphide-hosting successions of Yukon-Tanana Terrane, northern British Columbia and Yukon, in Yukon Exploration and Geology 2000: Exploration and Geological Services Division, Yukon, Indian and Northern Affairs Canada, p. 97–110.

Dumula, M.R. and Mortensen, J.K., 2002, Composition of placer and lode gold as an exploration tool in the Stewart YK map area, western Yukon, *in* Emond, D.S., Weston, L.H., and Lewis, L.L., eds., 2001, Yukon Exploration and Geology: Exploration and Geological Services Division, Yukon Region, Indian and Northern Affairs Canada, p. 87–102.

Hart, C.J.R., Baker, T. and Burke, M., 2000, New exploration concepts for country-rock-hosted, intrusion-related gold systems: Tintina gold belt in Yukon, *in* Tucker, T. and Smith, M.T., eds., The Tintina gold belt: concepts, exploration and discoveries, Special Volume 2: British Columbia and Yukon Chamber of Mines, Cordilleran Roundup, January, 2000, p. 145–172.

Jackson, L.E., Shimamura, K., and Huscroft, C.A., 2001, Late Cenozoic geology, Ancient Pacific Margin NATMAP Project, report 3: a re-evaluation of glacial limits in the Stewart YK basin of Stewart YK map area, Yukon Territory: Geological Survey of Canada, Current Research 2001–A3, 17 p.

McConnell, R.G., 1905, Report on the Klondike Gold Fields: Geological Survey of Canada Annual Report, v.XIV, part B. Mortensen, J.K., 1990, Geology and U-Pb geochronology of the Klondike District, west-central Yukon Territory: Canadian Journal of Earth Sciences, v. 27, p. 903–914.

Mortensen, J.K., 1992, Pre-mid-Mesozoic tectonic evolution of the Yukon-Tanana terrane, Yukon and Alaska: Tectonics, v. 11, no. 4, p. 836–853.

Mortensen, J.K., 1996, Geological compilation maps of the northern Stewart YK area, Klondike and Sixtymile Districts (115N/15, 16, 115O/13, 14 and Parts of 115 O/15, 16): Indian and Northern Affairs Canada, Northern Affairs, Yukon Region, Open File 1996–1(G), scale 1:50,000.

Newberry, R., 2000, Mineral deposits and associated Mesozoic and Tertiary igneous rocks within the interior Alaska and adjacent Yukon portions of the ‘Tintina gold belt’: a progress report, *in* Tucker, T. and Smith, M.T., eds., The Tintina gold belt: concepts, exploration and discoveries, Special Volume 2: British Columbia and Yukon Chamber of Mines, Cordilleran Roundup, January, 2000, p. 59–88.

Rotheisler, P.N.; Jackson, L.E, Jr. and Hicock, S.R., 2003, Late Cenozoic geology, Ancient Pacific Margin NATMAP Project, report 6: glacial limits, Middle Pleistocene sediments, and placer gold in the Scroggie Creek basin, south Klondike placer region, Yukon Territory: Geological Survey of Canada, Current Research, no. 2003–A1, 8 p.

Ryan, J.J. and Gordey, S.P., 2001a, New geological mapping in Yukon-Tanana terrane near Thistle Creek, Stewart YK map area, Yukon Territory: Geological Survey of Canada, Current Research 2001–A2, 18 p.

Ryan, J.J. and Gordey, S.P., 2001b, Geology of the Thistle Creek area (115–O/3), Yukon Territory: Geological Survey of Canada, Open File 3690, scale 1:50,000.

Ryan, J.J. and Gordey, S.P., 2002a, Bedrock geology of Yukon Tanana terrane in southern Stewart YK map area, Yukon Territory: Geological Survey of Canada, Current Research 2002–A1, 11 p.

Ryan, J.J. and Gordey, S.P., 2002b, Geology, southern Stewart YK area, Yukon Territory (Parts of 115 J/14, 115-O/2,3,4,5,7): Geological Survey of Canada, Open File 4338, scale 1:100,000.

Ryan, J.J., Gordey, S.P., Glombick, P., Piercey, S.J. and Villeneuve, M.E., 2003, Update on bedrock geological mapping of the Yukon-Tanana terrane, southern Stewart YK map area, Yukon Territory: Geological Survey of Canada, Current Research, no. 2003-A9, 7 p.

Thompson, R.I., Nelson, J.L., Paradis, S., Roots, C.F., Murphy, D.C., Gordey, S.P., and Jackson, L.E., 2000, Ancient Pacific Margin NATMAP Project, year one: Geological Survey of Canada, Current Research, 2000-A1, 8 p.