

GEOLOGIC REPORT FOR WORK COMPLETED ON JUNE 27, 2003
RACKLA CLAIMS
RACKLA 1 - 16, YC02826 TO YC02841
MAYO MINING DISTRICT
106 C/04
MOUNT FERRELL/ NADALEEN RIVER AREA
64°15' N and 133°55'W

MANSON CREEK RESOURCES LTD
SUITE 500, 926 - 5TH AVE SW
CALGARY, AB
T2P 0N7

Regan Chernish P.Geol
Geological Consultant
March 31, 2002



095284

TABLE OF CONTENTS

1.0 INTRODUCTION

2.0 DESCRIPTION OF LANDHOLDINGS

2.1 LOCATION AND MINERAL CLAIMS

2.2 ACCESS

2.3 PROPERTY HISTORY

3.0 GENERAL GEOLOGY

4.0 STRUCTURE

5.0 2002 GEOLOGICAL WORK

6.0 CONCLUSIONS AND RECOMMENDATION

7.0 REFERENCES

8.0 STATEMENT OF COSTS

9.0 CERTIFICATION

LIST OF MAPS

1.0 INTRODUCTION

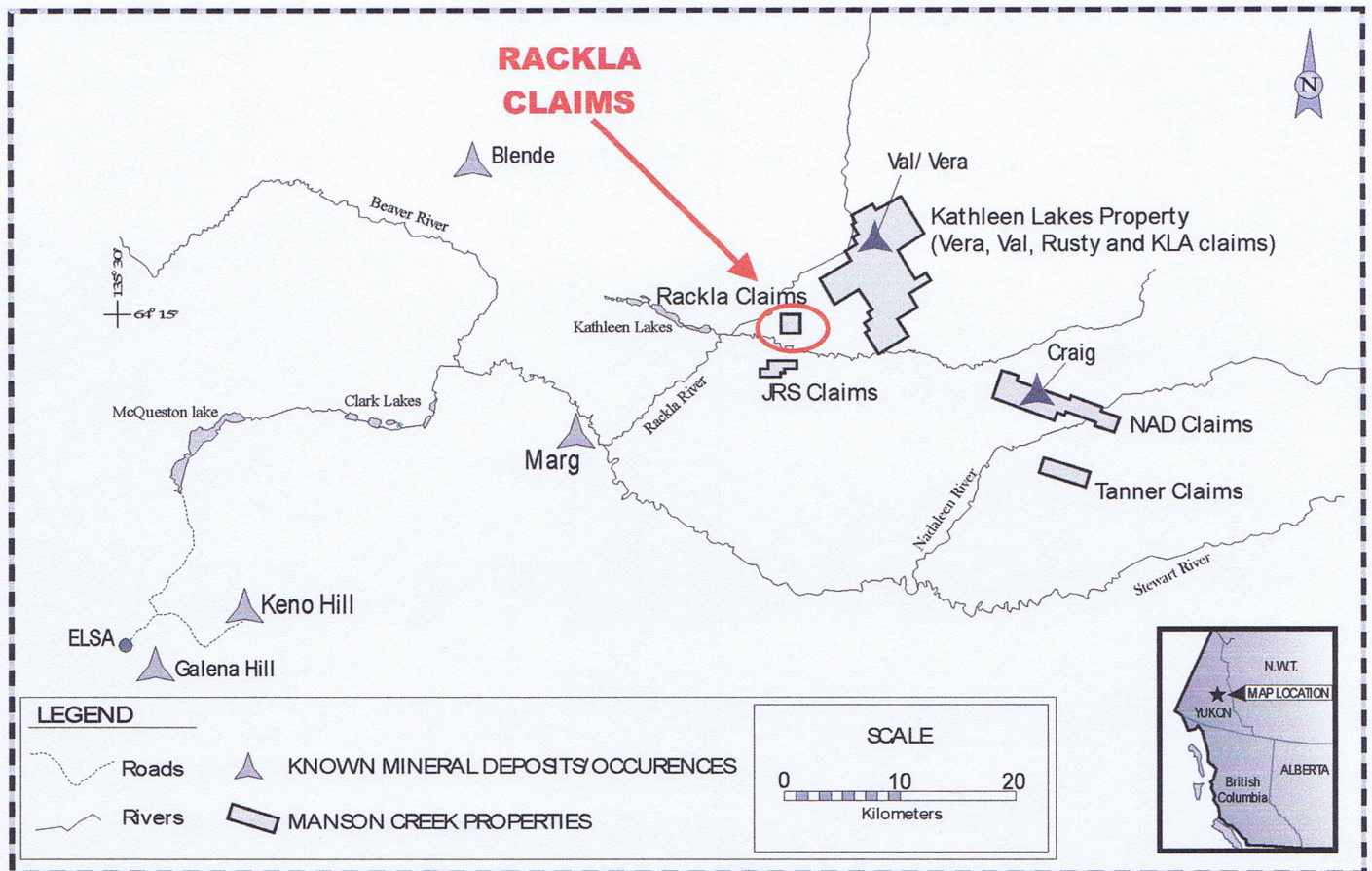
The Rackla claims consist of sixteen contiguous claims staked in the July 2001 for Manson Creek Resources Ltd. The claim titles were subsequently transferred to Manson Creek Resources Ltd. ("Manson Creek"). The claims were staked to cover several hydromorphic gossans that were observed during previous work programs in the area. Two geologists contracted to Manson Creek prospected the claims, Rackla 1 – 16 (YC02826 – YC02841), in late June 2002.

This report is to supplement the statement of work filed in the May Mining Recorder's office in the summer of 2002.

2.1 LOCATION AND MINERAL CLAIMS

The Rackla Claims are located in the Mayo Mining district (Figure 1), approximately 64°15' N and 133° 55' W, NTS sheet 106C/04. The claims are located approximately 130 km north-northeast of Mayo.

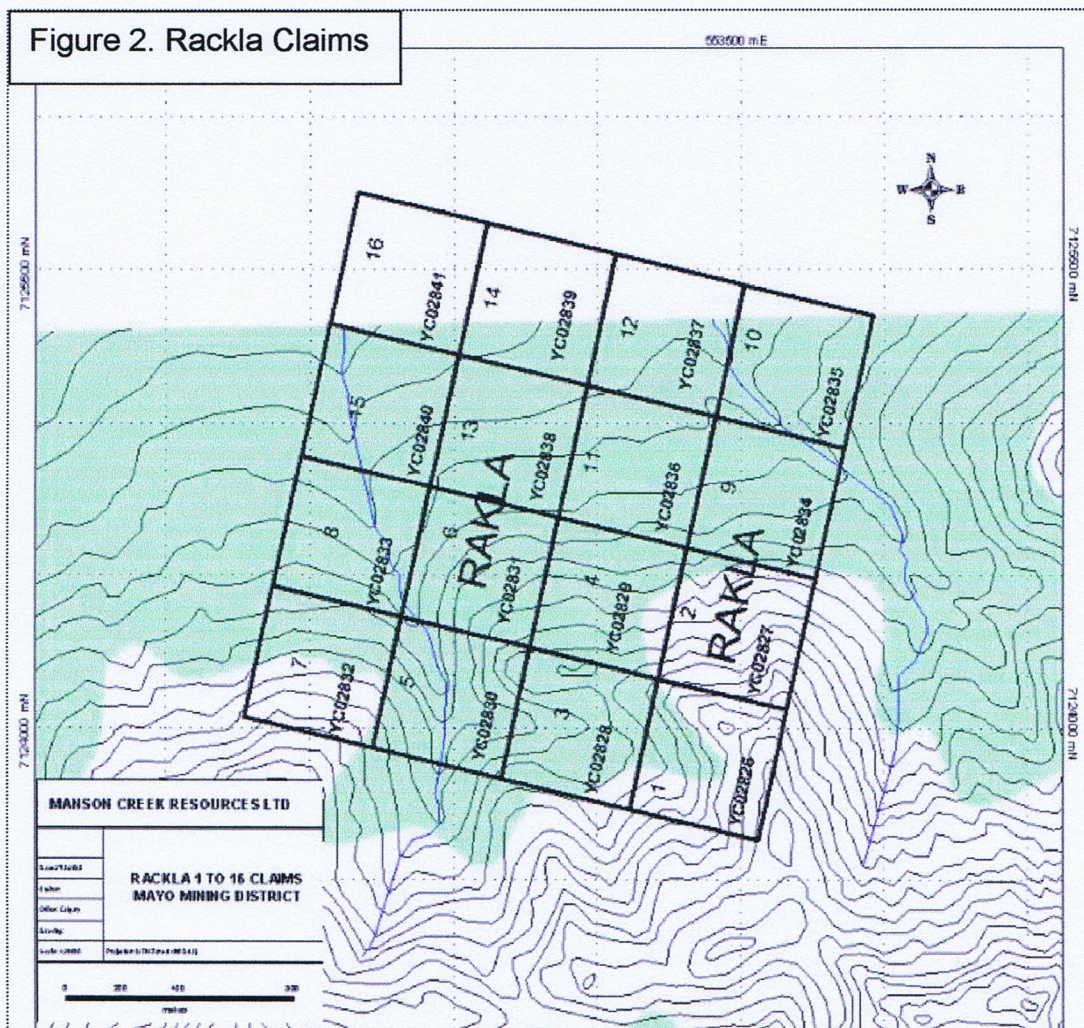
Figure 1. Location of Claims.



The Rackla block is comprised of 16 contiguous claims (Figure 2), the Rackla 1 – 16 claims (YC02826 to YC02841).

List of Claims:

CLAIM NAME	GRANT NUMBER	TITLE HOLDER OF CLAIMS
Rackla 1	YC02826	Manson Creek Resources Ltd
Rackla 2	YC02827	Manson Creek Resources Ltd
Rackla 3	YC02828	Manson Creek Resources Ltd
Rackla 4	YC02829	Manson Creek Resources Ltd
Rackla 5	YC02830	Manson Creek Resources Ltd
Rackla 6	YC02831	Manson Creek Resources Ltd
Rackla 7	YC02832	Manson Creek Resources Ltd
Rackla 8	YC02833	Manson Creek Resources Ltd
Rackla 9	YC02834	Manson Creek Resources Ltd
Rackla 10	YC02835	Manson Creek Resources Ltd
Rackla 11	YC02836	Manson Creek Resources Ltd
Rackla 12	YC02837	Manson Creek Resources Ltd
Rackla 13	YC02838	Manson Creek Resources Ltd
Rackla 14	YC02839	Manson Creek Resources Ltd
Rackla 15	YC02840	Manson Creek Resources Ltd
Rackla 16	YC02841	Manson Creek Resources Ltd



2.2 ACCESS

There is no fixed wing access to the Rackla Claim block. To access the block one can fly fixed wing aircraft the 120 km from Mayo to the airstrip located at the Rackla camp and then utilize a helicopter to fly to the Rackla claim block, which lays 34 km to the West of the camp. An alternative route is to use a helicopter to fly directly from Mayo to the Rackla claims, a distance of approximately 120 km.

2.3 PROPERTY HISTORY

The Rackla claims were staked in the July 2001 to cover several hydromorphic gossans. No further work was done during the 2001 field season. On June 27, 2002, a limited reconnaissance program was completed. Several gossanous streams were identified, prospected, and sampled.

Previous work in the area has included soil sampling, as evidenced by the flagged lines and sample stations observed during the reconnaissance survey. There was visible evidence that a number of the ferricrete occurrences adjacent to the gossanous streams were sampled previously.

3.0 GENERAL GEOLOGY

Mapping in the area has been limited to geological mapping as part of the GSC regional mapping exercises (1:250,000 scale). Specifically, the only regional work performed on the 106 C map sheets outside of late compilation and reinterpretation work was conducted by Blusson 1978. More work was conducted on the 106D (Nash Creek) map sheet, which is adjacent to the West of the project area. Work by Green and Roddick (1961), Blusson (1978) and more recently, work by Grant Abbot (1990) is available for the Nash Creek map sheet.

Historically, the district geology has been widely recognized as being underlain by Upper Proterozoic clastic rocks to the South (Hyland Group) and Devonian to Mississippian shales and carbonates to the North (Eam Group) (Grant Abbot, Current Research, GSC Paper 90-1E, 1990). The two units are represented in the literature as being separated by a zone of south dipping thrust faults collectively termed the Dawson Thrust zone. Along this thrust, a package of rocks composed of slate, quartzite, conglomerates and minor volcanic units, informally known as the 'grit unit' is thrust northwards over the Eam Group carbonates and black clastic units.

The project area to date has historically been recognized primarily as a silver-lead-zinc district, with the majority of mineralization discovered to date occurring in the Hyland Group carbonate, clastic and sedimentary rocks. The best-known examples of this type of mineralization include the Val-Vera veins and the Craig mineralization.

The dominant lithology observed on the Rackla Claims were variably coloured gritty shales with rare to trace pyrite. The shales were stratigraphically beneath a grey weathering limestone that formed the peaks of the ridges in the area. Immediately beneath the shales was fine-grained sandstone that upon weathering took on a purplish hue. The rocks observed likely are part of the Eam Group package of rocks located to the north of the Dawson Thrust.

The shales display evidence of several deformation events but the primary bedding is still observable in outcrop. Bedding was predominately North or South dipping with outcrop scale variations.

4.0 STRUCTURE

From the reconnaissance it was observed that several episodes of deformation were recorded in the shales of the area. Locally the shales deformed in a ductile fashion. No hypothesis was proposed for the number of events or their exact orientation, as this was not the focus of the property visit.

5.0 2002 GEOLOGICAL WORK

The work completed on the Rackla claims comprised of a traverse across the claim block by two geologists under contract to Manson Creek. The objective of the property examination was to prospect for the sources of the hydromorphic gossans observed in the area. Notes and mapping were done on a 1:50,000 map of the area. As aforementioned the dominated lithology observed was the gritty shale containing rare to trace amounts of disseminated pyrite. No other mineralization was observed in the shales. Above the shales was a limestone that was not mineralized. The limited sandstone outcrops below the shales locally contained trace pyrite.

Once the traverse entered the tree line there was very little outcrop. Minor outcrops were observed along creek beds but these were only present near the upper reaches of the tree line.

Upon nearing the bottom of the valley numerous ferricrete occurrences were encountered and sampled. There was abundant evidence of previous work in the area. Several helicopter pads, flagged soil grids and sample pits in the ferricrete were observed.

None of the seven rock and ferricrete samples returned anomalous values.

6.0 CONCLUSIONS AND RECOMMENDATION

The Rackla claims were staked in the July 2001 to cover several hydromorphic gossans. On June 27, 2002, a limited reconnaissance program was completed. The work consisted of the prospecting for the sources of the several gossanous streams in the area.

The only mineralization observed was pyrite and none of the rock and ferricrete samples returned anomalous metal values.

The likely source of the gossans is the pyrite, which is pervasive through the shale units.

No further work is recommended on the claims at this time.

7.0 REFERENCES

Abbot, J.G., 1990, Preliminary results of the stratigraphy and structure of the Mt. Westman map area, central Yukon; in Current Research, Part E, Geological Survey of Canada paper 90-1E, pp. 15-22.

Blusson, S.L., 1978, Regional geological setting of Lead-zinc deposits in the Selwyn Basin, Yukon; in Current Research, Part A, Geological Survey of Canada, paper 78-1A, pp. 77-80.

Gordey, S.P., 1990, Geology and Mineral Potential, Tiny Island Lake Map Area, Yukon; in Current Research, Part E, Geological Survey of Canada paper 90-1E, pp. 23-29.

Green, L.H. and Roddick, J.A., 1961, Geology, Nash Creek, Yukon Territory; Geological Survey of Canada, Map 1282A, scale 1:250,000 (accompanies GSC Memoir 364 by L.H. Green).

Yukon MINFILE, 2001. Exploration and Geological Services Division, Yukon, Indian and Northern Affairs Canada

9.0 STATEMENT OF COSTS

9.0 CERTIFICATION

I, Regan Chemish, of Calgary, Alberta hereby certify that:

I graduated with B.Sc. Geology from the University of Alberta in 1991.

I am a registered Professional Geologist with NAPEGG.

I have been practicing my profession continuously for 12 years.

I am employed as a geological consultant for Manson Creek Resources Ltd.

I was directly involved in the work reported in this document and the associated costs incurred.

Respectfully submitted

Regan Chemish P.Geol

LIST OF MAPS

1. Path of Traverse

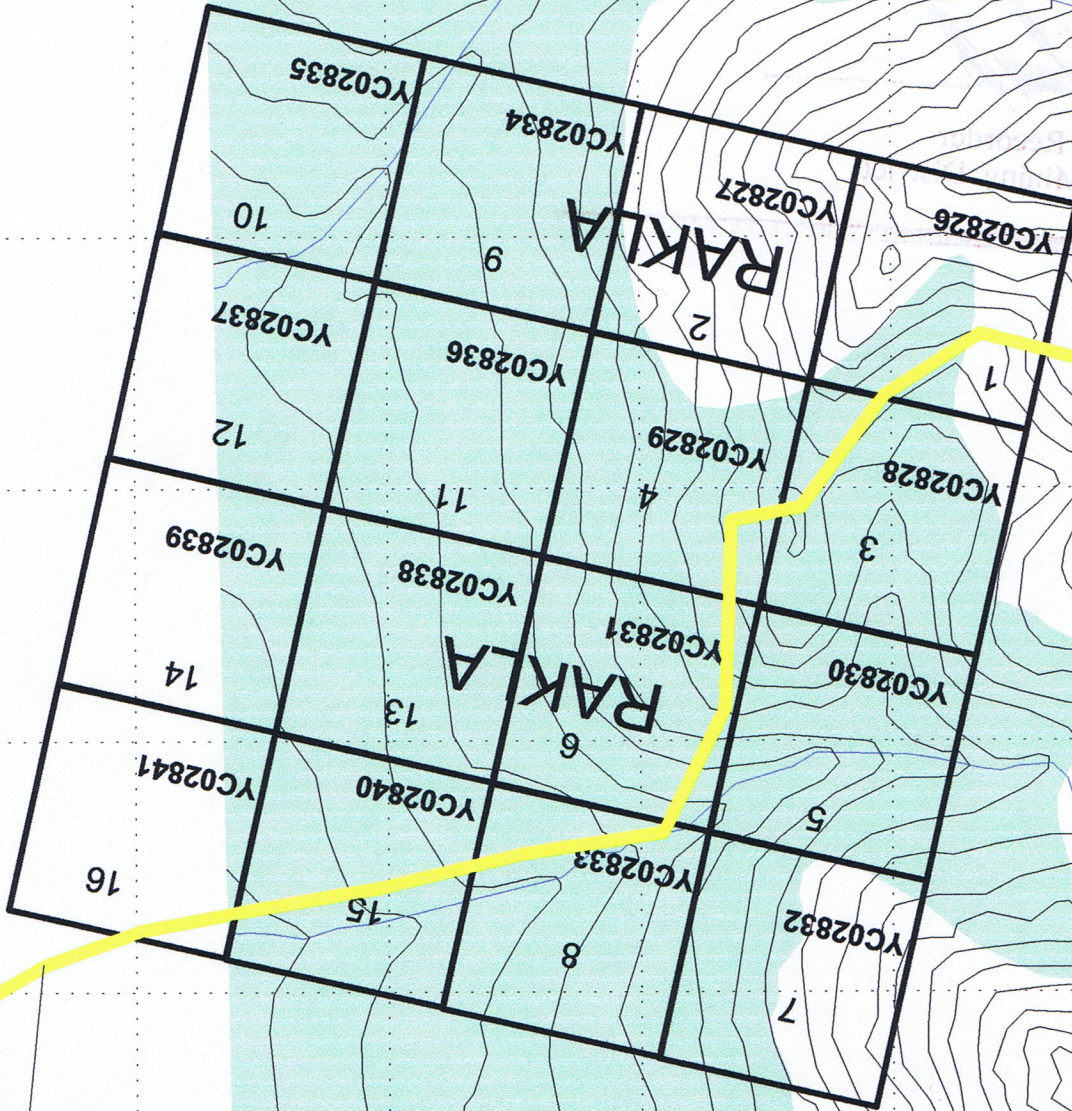
7126000 mN

7124500 mN



553000 mE

553000 mE



551500 mE

551500 mE

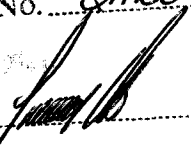
PATH OF JUNE 27, 2002 TRAVERSE

MANSON CREEK RESOURCES LTD.	
Date: March 2003	Rackla Claims
Author: RC	Traverse Path
Office: Calgary	June 27, 2002
Drawing	Projection: UTM Zone 8 (NAD 27 for Canada)
Scale: 1:16000	

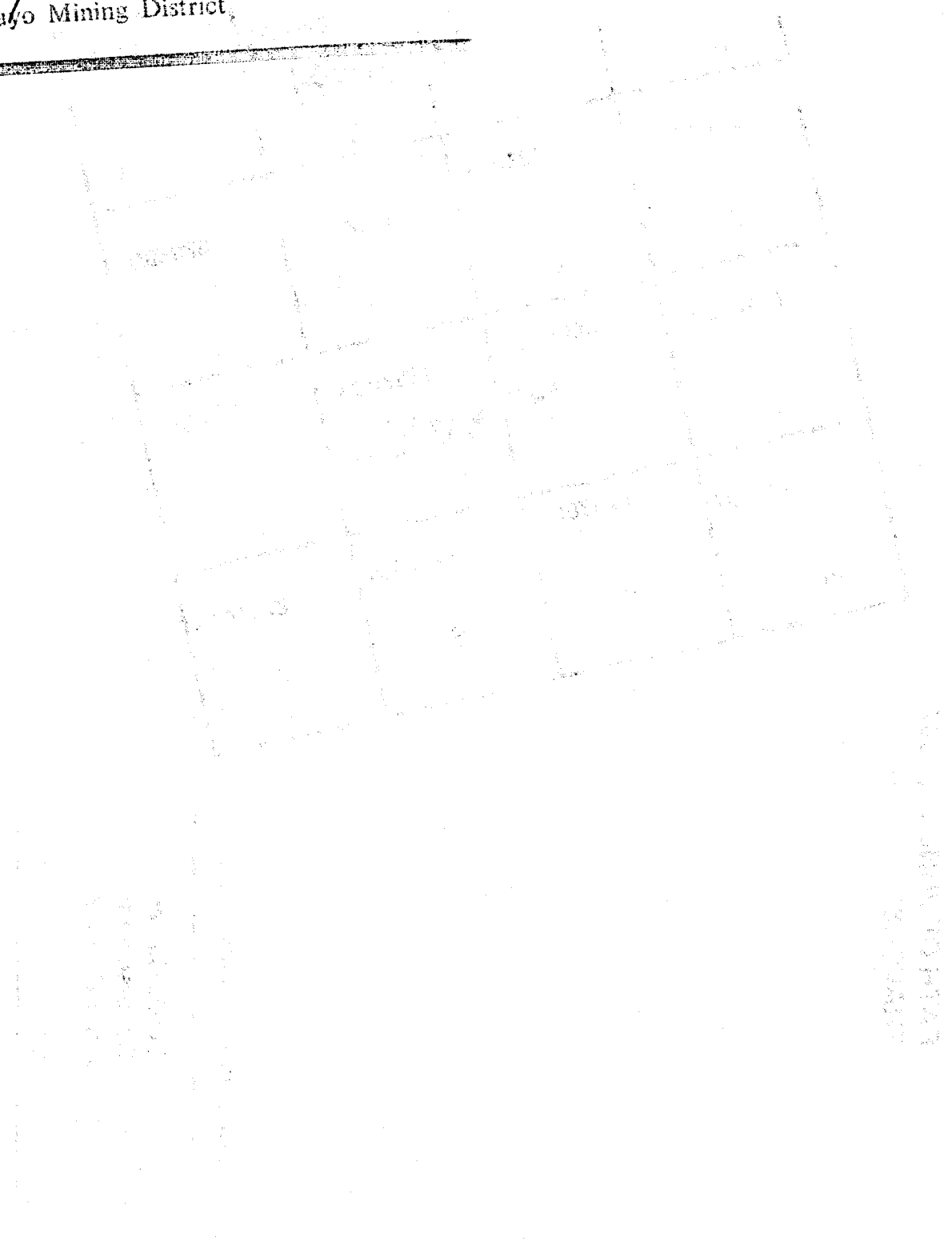
7126000 mN

7124500 mN

Costs associated with this report have been
approved in the amount of \$ 1800
for assessment credit under Certificate of
Work No. Qmco404



Mining Recorder
Mayo Mining District



RECORDED
INDEXED
MAY 10 1904

**Manson Creek
Resources Ltd**

500, 926 – 5th Avenue S.W.
Calgary, AB
T2P 0N7

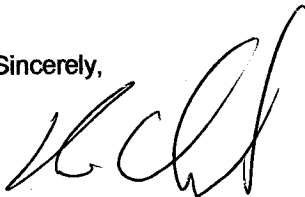
March 28, 2003

Mayo Mining Recorder
Box 10
Mayo, Yukon
Y0B 1M0
867 – 996 - 2256

Dear Sir or Madam:

Please find enclosed two copies of "GEOLOGIC REPORT FOR WORK COMPLETED ON JUNE 27, 2003" that are being submitted for assessment purposes on the Rackla 1 - 16 claims. Manson Creek would like to apply the \$2,129.50 in costs to the group of 16 claims. Please call if there are any questions or concerns.

Sincerely,



Regan Chemish P.Geol
Geological Consultant
Manson Creek Resources Ltd