

ARCHER, CATHRO & ASSOCIATES (1981) LIMITED  
1016 -510 West Hastings Street  
Vancouver, B.C. V6B 1L8

Telephone: 604-688-2568

Fax: 604-688-2578

---

**ASSESSMENT REPORT**

describing

**SOIL GEOCHEMICAL SAMPLING**

at the

**MAT PROPERTY**

MAT 1-26 YC76206-YC76231

NTS 115N/7

Latitude 63°29'N; Longitude 140°39'W

located in the

Dawson Mining District  
Yukon Territory

prepared by

Archer, Cathro & Associates (1981) Limited

for

**ATAC RESOURCES LTD.**  
and  
**SILVER QUEST RESOURCES LTD.**

by

H. Smith, B.Sc. Geology, GIT  
January 2010

## CONTENTS

	<u>PAGE</u>
INTRODUCTION	1
PROPERTY LOCATION, CLAIM DATA AND ACCESS	1
HISTORY	1
GEOMORPHOLOGY	2
GEOLOGY	2
ROCK GEOCHEMISTRY	2
SOIL GEOCHEMISTRY	3
DISCUSSION AND CONCLUSIONS	3
REFERENCES	4

## APPENDICES

- I STATEMENT OF QUALIFICATIONS
- II CERTIFICATES OF ANALYSIS

## FIGURES

<u>No.</u>	<u>Description</u>	<u>Follows Page</u>
1	Property Location	1
2	Claim Locations	1
3	Tectonic Setting	2
4	Geology	2
5	Soil Sample Locations	3

## **INTRODUCTION**

The Mat property is an orogenic gold target that lies on the south side of Matson Creek, an active placer gold mining creek. It is located in west-central Yukon about 16 km east of the Alaska border and 90 km southwest of Dawson City. At the time of the exploration program the property was owned 100% by ATAC Resources Ltd.; however, it has subsequently been sold to Silver Quest Resources Ltd.

This report describes a soil sampling program that was conducted by a two person crew on August 22, 2009. The work was done by Archer, Cathro & Associates (1981) Limited on behalf of ATAC. The author directed the program and her Statement of Qualifications is in Appendix I.

## **PROPERTY LOCATION, CLAIM DATA AND ACCESS**

The Mat property comprises 26 contiguous mineral claims located at latitude 63°29'N and longitude 140°39'W on NTS map sheet 115N/7, as shown on Figure 1. The claims are registered with the Dawson Mining Recorder in the name of Archer Cathro, which holds them in trust for ATAC. Claim data are listed below while the locations of individual claims are illustrated on Figure 2.

<u>Claim Name</u>	<u>Grant Number</u>	<u>Expiry Date*</u>
MAT 1-26	YC76206-YC76231	March 5, 2011

\*Expiry date includes 2009 work which has been filed for assessment credit but not yet accepted.

Access to the property in 2009 was via a Bell 206B helicopter owned by Fireweed Helicopters Ltd. and operated from its permanent base in Dawson City.

There is no road access to the property; however, a seasonal, four-wheel drive road connects the Top of the World Highway to the placer operation at Matson Creek. The end of this road is about 800 m from the property.

A large, well maintained airstrip is located approximately three kilometres northwest of the property. This airstrip is used to service the placer operation and could easily accommodate a small to medium sized aircraft such as a Cessna 206.

## **HISTORY**

There is no Minfile occurrence or public record of previous hard rock exploration on the Mat property.

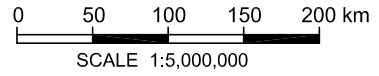
Placer mining activity on Matson Creek from 1977 to 2006 has reportedly produced 25,455 ounces of gold (LaBarge, 2007). The gold has a fineness of 885, which indicates a proximal source.

ATAC staked the Mat property in September 2008 and sold it to Silver Quest in December 2009.

**SILVER QUEST RESOURCES LTD.  
ATAC RESOURCES LTD.**

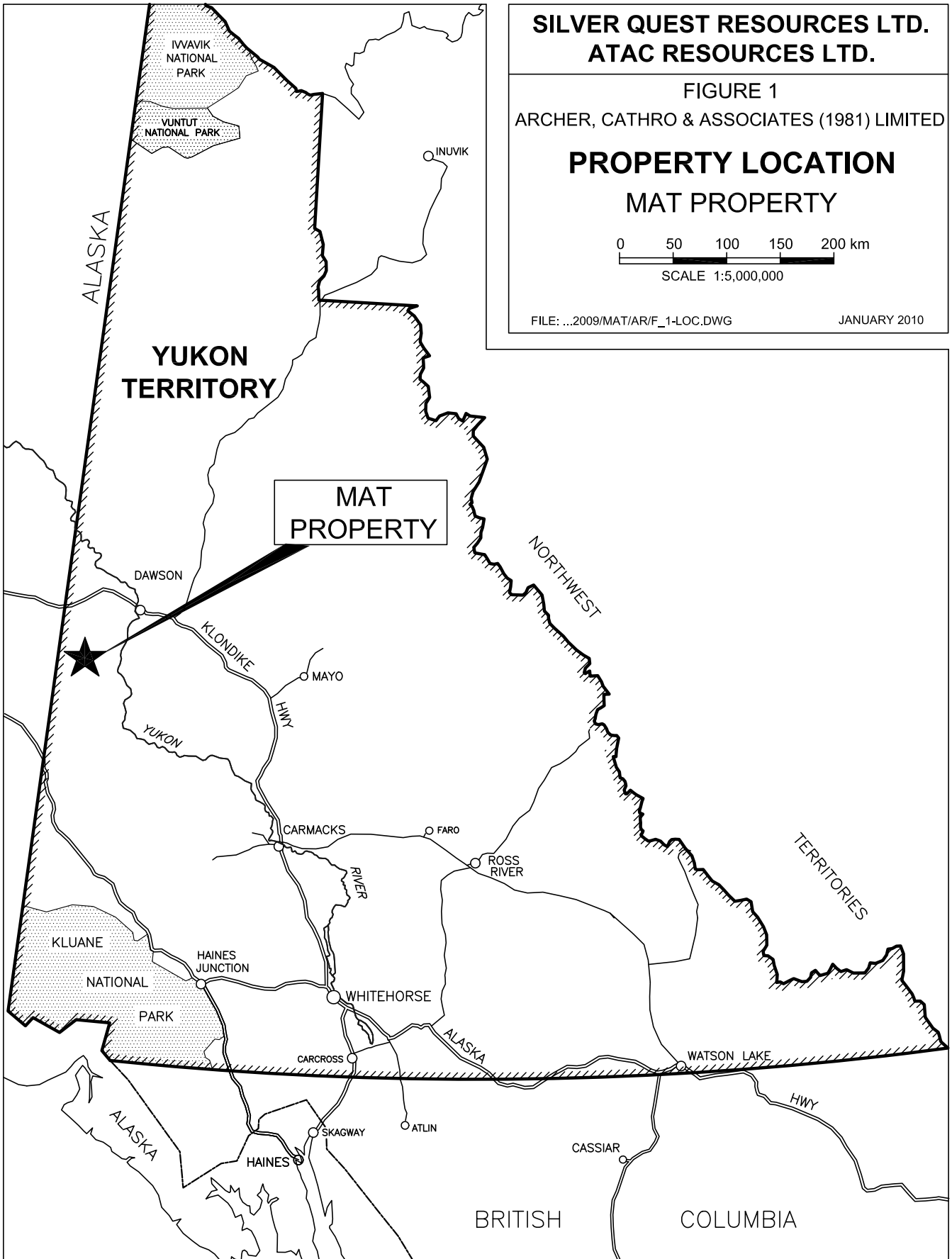
FIGURE 1  
ARCHER, CATHRO & ASSOCIATES (1981) LIMITED

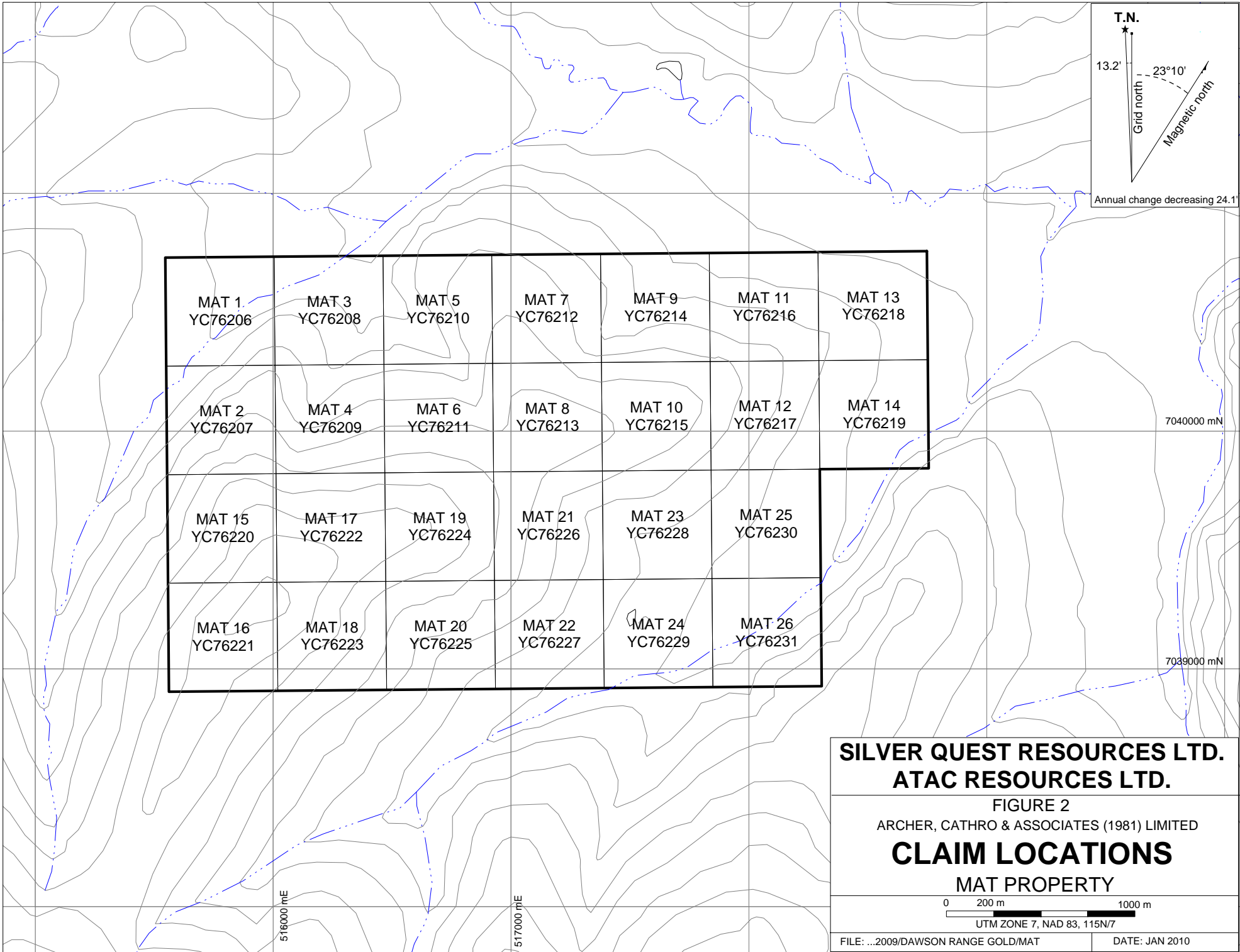
**PROPERTY LOCATION  
MAT PROPERTY**



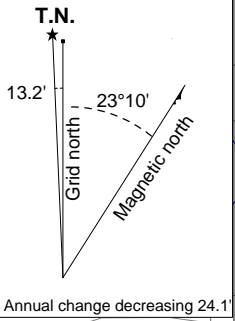
FILE: ...2009/MAT/AR/F\_1-LOC.DWG

JANUARY 2010





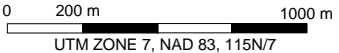
MAT 1 YC76206	MAT 3 YC76208	MAT 5 YC76210	MAT 7 YC76212	MAT 9 YC76214	MAT 11 YC76216	MAT 13 YC76218
MAT 2 YC76207	MAT 4 YC76209	MAT 6 YC76211	MAT 8 YC76213	MAT 10 YC76215	MAT 12 YC76217	MAT 14 YC76219
MAT 15 YC76220	MAT 17 YC76222	MAT 19 YC76224	MAT 21 YC76226	MAT 23 YC76228	MAT 25 YC76230	
MAT 16 YC76221	MAT 18 YC76223	MAT 20 YC76225	MAT 22 YC76227	MAT 24 YC76229	MAT 26 YC76231	



**SILVER QUEST RESOURCES LTD.  
 ATAC RESOURCES LTD.**

FIGURE 2  
 ARCHER, CATHRO & ASSOCIATES (1981) LIMITED

**CLAIM LOCATIONS  
 MAT PROPERTY**



## **GEOMORPHOLOGY**

The property lies within the Dawson Range in an area of gentle relief. Local elevations range from 700 to 1050 m above sea level. The higher parts of the property are thinly vegetated with stunted deciduous and evergreen trees, scrub brush and thin moss cover. Lower elevations support a mixture of deciduous and evergreen forest with thick buckbrush-, willows- and moss-covered slopes. No part of the property is above treeline.

The Dawson Range escaped Pleistocene glaciation and therefore outcrops are rare and are mostly found along vegetated ridges and in creek cuts.

The property is drained by Matson Creek, which ultimately flows into the Yukon River via the Sixtymile River.

## **GEOLOGY**

The Mat property lies within the Yukon-Tanana Terrane approximately 80 km southwest of the Tintina Fault (Figure 3). The main lithologies in the vicinity of the property are described in the following paragraphs and are illustrated on Figure 4.

The oldest rocks in the area are assigned to the Late Devonian to Mississippian Pelly Gneiss Suite (DMgPW). This unit has been described by Gordey and Makepeace (1999) as foliated medium grained, homogeneous biotite gneiss to biotite or hornblende granodiorite gneiss and massive to strongly foliated dioritic to granodioritic gneiss with interfoliated amphibolite, quartz-mica schist and phyllite.

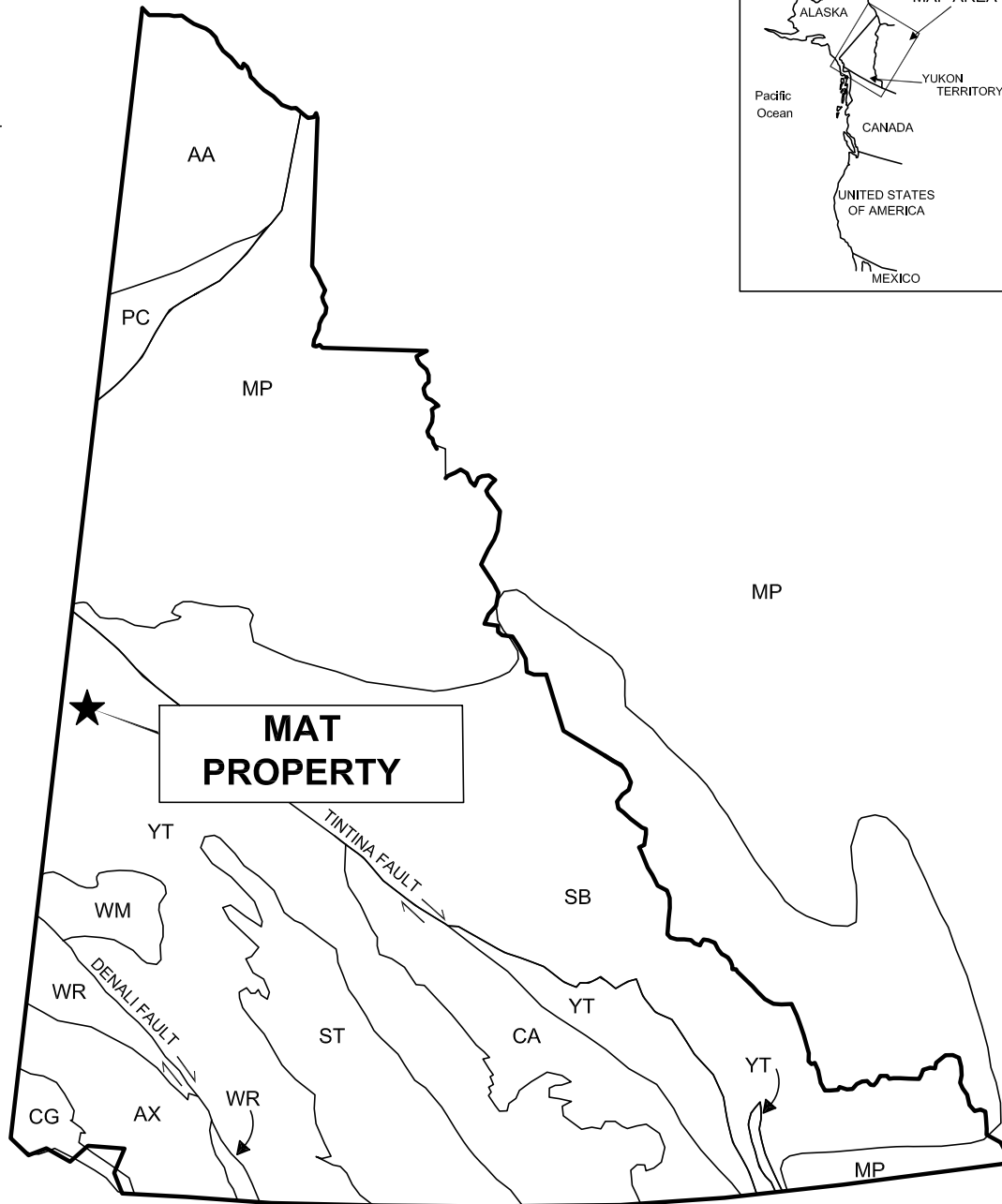
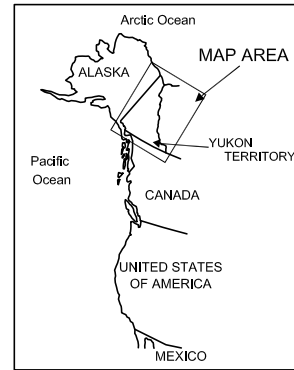
DMgPW is overlain by Carbonaceous and Permian Klondike Schist Assemblage (CPK1), which is composed of tan to rusty and black weathering muscovite and/or chloritic quartzite and quartz-muscovite-chlorite schist, and quartz and/or feldspar augen-bearing quartz-muscovite schist. The Mat property has been mapped entirely as CPK1.

Approximately seven kilometres east of the property is an Upper Cretaceous volcanic suite belonging to the Carmacks Group (uKC2). This suite has been described as a volcanic succession dominated by acid vitric crystal tuff, lapilli tuff and welded tuff including feeder plugs and necks; volcanic flow rocks and quartz feldspar porphyries (Gordey and Makepeace, 1999).

No property-scale mapping was completed in 2009.

## **ROCK GEOCHEMISTRY**

No rock samples were collected in 2009.



ANCESTRAL NORTH AMERICA

- MP Mackenzie Platform
- SB Selwyn Basin

TERRANES  
Displaced Continental Margin

- AA Arctic Alaska
- CA Casslar
- PC Porcupine

Pericratonic Terranes

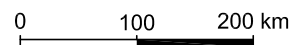
- YT Yukon-Tanana / Slide Mountain

ACCRETED TERRANES

- ST Stikinia / Cache Creek
- AX Alexander
- WR Wrangellia
- CG Chugach
- WM Windy McKinley

**SILVER QUEST RESOURCES LTD.  
ATAC RESOURCES LTD.**

FIGURE 3  
ARCHER, CATHRO & ASSOCIATES (1981) LIMITED  
**TECTONIC SETTING  
MAT PROPERTY**





UPPER CRETACEOUS

uKC2

CARMACKS GROUP  
Volcanic succession dominated by acid vitric crystal tuff, lapilli tuff and welded tuff including feeder plugs and necks; volcanic flow rocks and quartz feldspar porphyries.

CARBONIFEROUS AND PERMIAN

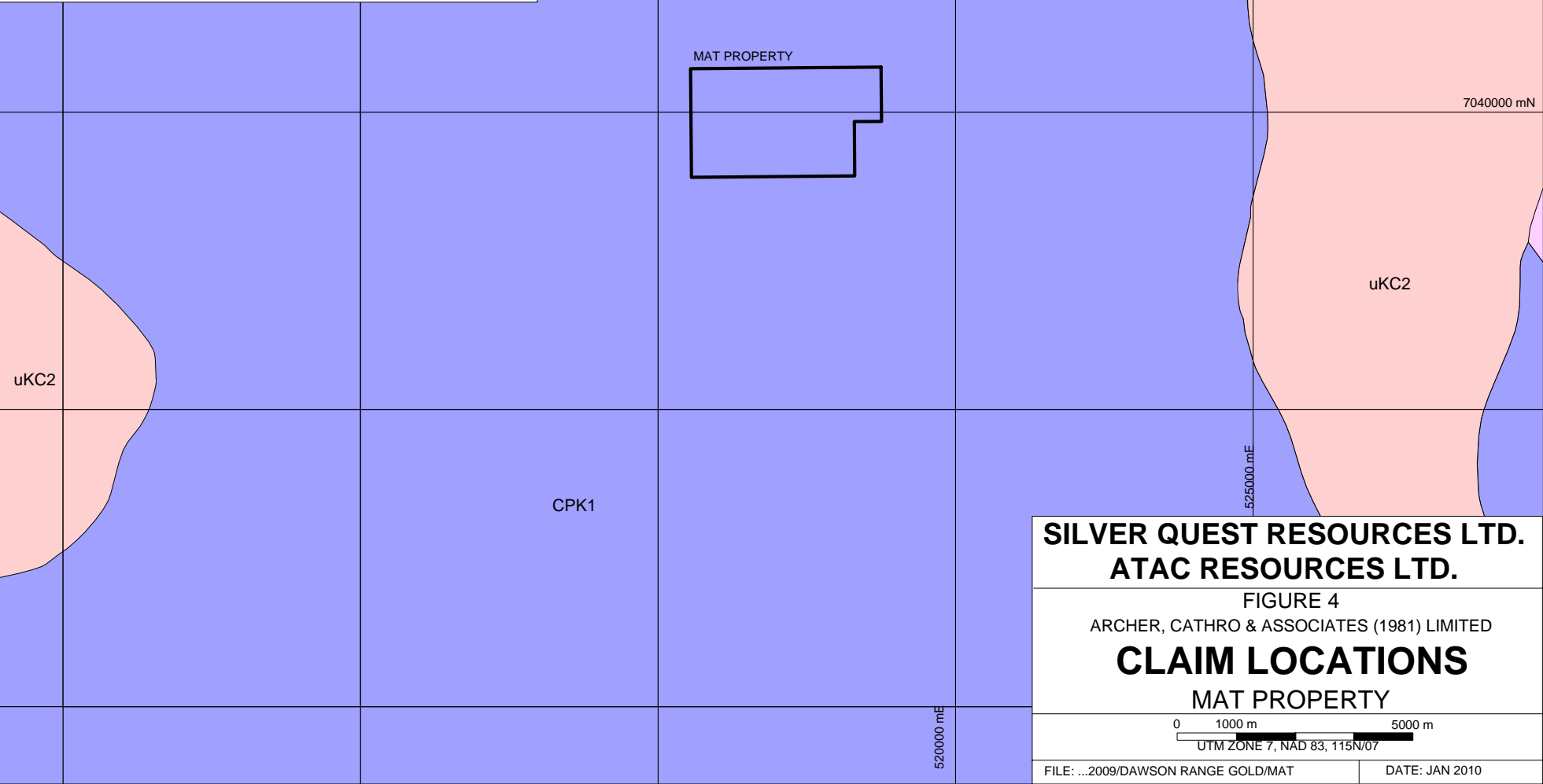
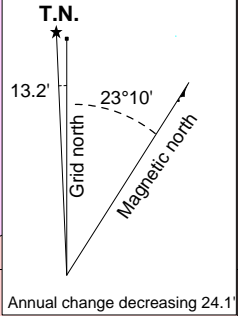
CPK1

KLONDIKE SCHIST  
Tan to rusty and black weathering muscovite and/or chloritic quartzite and quartz-muscovite-chlorite schist; quartz and/or feldspar augen-bearing quartz-muscovite schist.

LATE DEVONIAN TO MISSISSIPPIAN

DMgPW

PELLEY GNEISS SUITE-SOUTHWEST  
Foliated medium grained, homogeneous granodiorite gneiss to biotite or hornblende granodiorite gneiss; massive to strongly foliated dioritic gneiss; includes interfoliated amphibolite, quartz-mica schist and phyllite.



**SILVER QUEST RESOURCES LTD.  
ATAC RESOURCES LTD.**

FIGURE 4  
ARCHER, CATHRO & ASSOCIATES (1981) LIMITED

**CLAIM LOCATIONS**  
MAT PROPERTY

0 1000 m 5000 m  
UTM ZONE 7, NAD 83, 115N/07

## **SOIL GEOCHEMISTRY**

A total of 53 deep auger soil samples were taken during the 2009 program. Deep auger samples were used to test as deep in the weathered soil profile as possible. Soil samples were collected at 50 m spacings on two lines spaced 900 m apart. All soil sample sites were located by means of compass and hip chain surveys with frequent checks using handheld GPS units. The sites were marked with two pieces of orange flagging labelled with the corresponding sample number. Soil samples were taken from the bottoms of 25 to 60 cm deep holes and were immediately placed into individually pre-numbered kraft paper bags. Soil sample locations are illustrated on Figure 5.

Multi-element analyses (Au-ICP21 and ME-ICP41) for soil samples were carried out at ALS Chemex in North Vancouver, B.C. Soil samples were dried and sieved to -80 mesh. The fine fraction was then analyzed for gold and 35 other elements. Certificates of Analysis are in Appendix II.

Results from soil geochemistry were low for all metals; however, considering the deep weathering regime in the region and the low sample density, these results were not surprising.

## **DISCUSSION AND CONCLUSIONS**

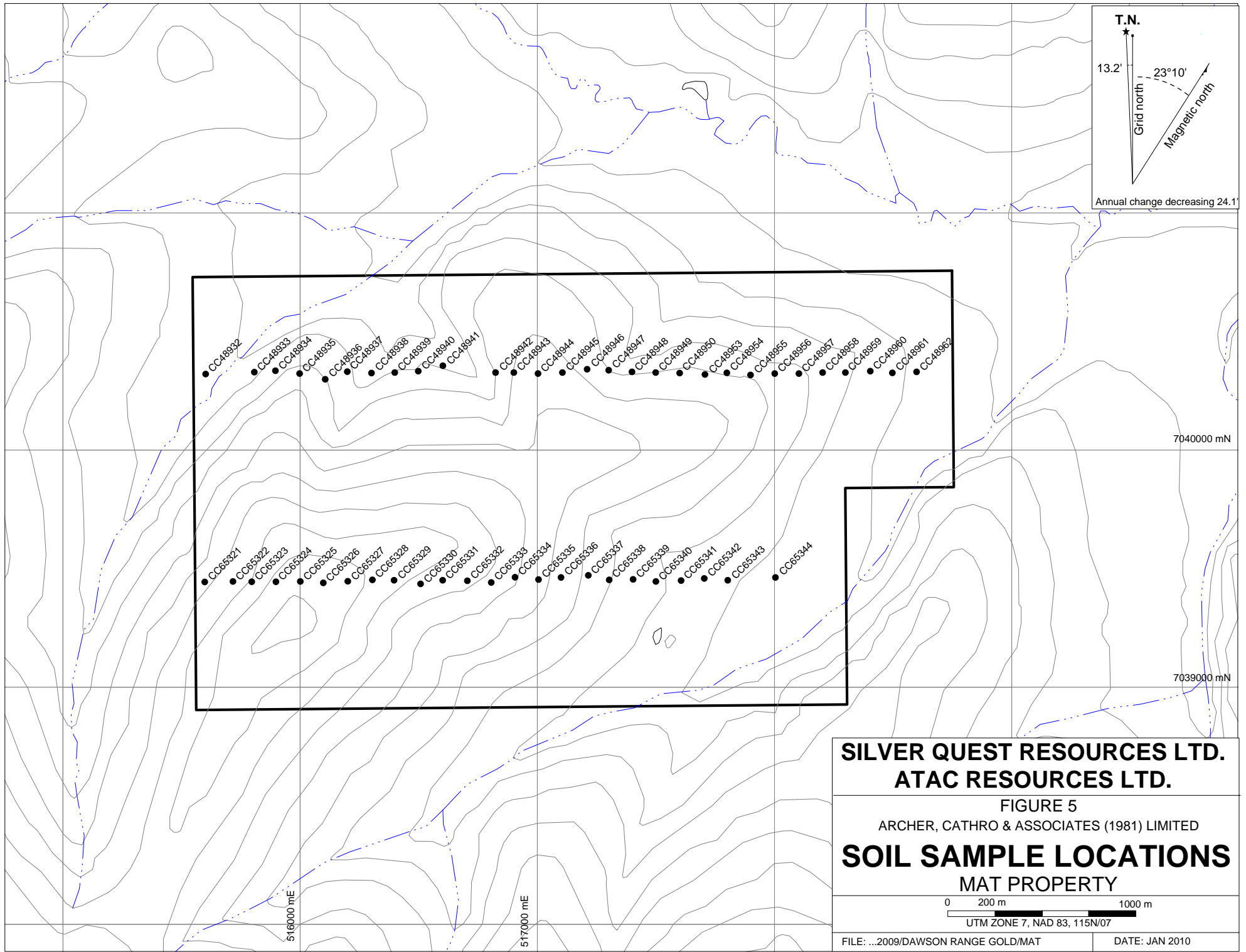
The Mat property is favourably located within the Klondike Schist Assemblage and is located less than one kilometre upstream of the active Matson Creek placer operation.

Although the 2009 soil sampling program failed to identify significant geochemical anomalies, additional work is warranted on the property. This work should include a property-wide, closely-spaced, deep auger grid soil sampling program, possibly coupled with magnetic and electromagnetic surveys.

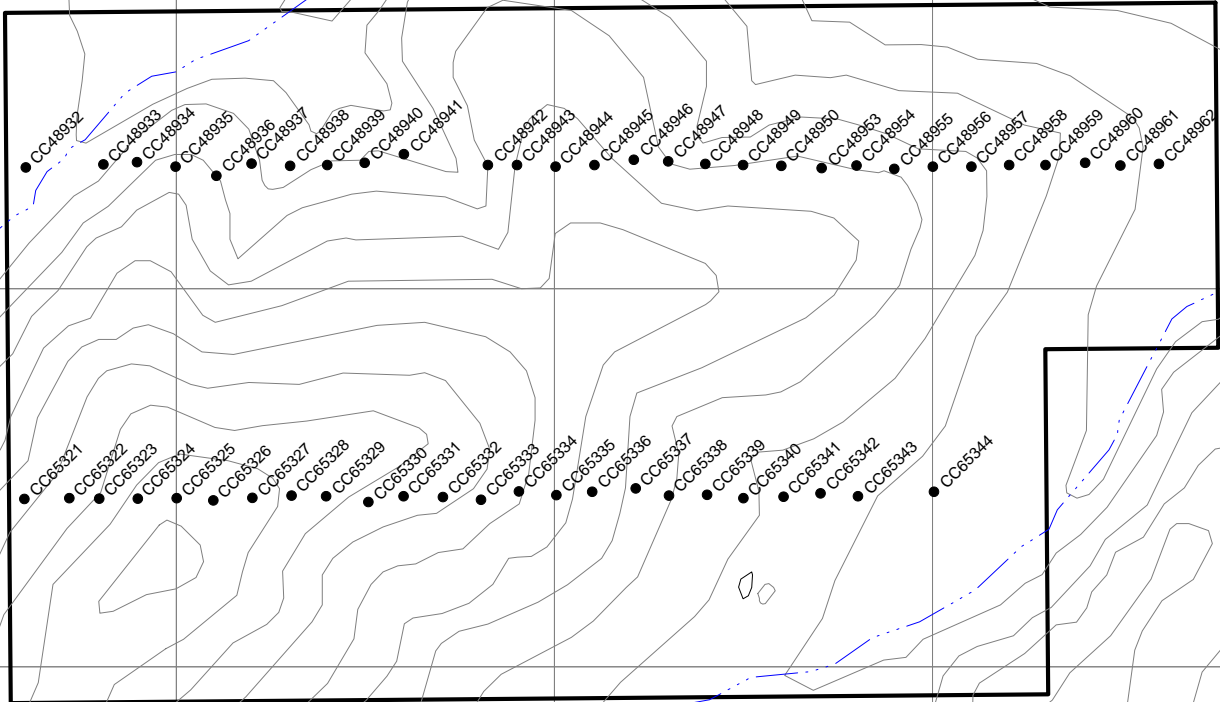
Respectfully submitted,

ARCHER, CATHRO & ASSOCIATES (1981) LIMITED

Heather Smith B.Sc. Geology, GIT



T.N.  
 13.2'  
 Grid north  
 23°10'  
 Magnetic North  
 Annual change decreasing 24.1'



- CCA48932
- CCA48933
- CCA48934
- CCA48935
- CCA48936
- CCA48937
- CCA48938
- CCA48939
- CCA48940
- CCA48941
- CCA48942
- CCA48943
- CCA48944
- CCA48945
- CCA48946
- CCA48947
- CCA48948
- CCA48949
- CCA48950
- CCA48953
- CCA48954
- CCA48955
- CCA48956
- CCA48957
- CCA48958
- CCA48959
- CCA48960
- CCA48961
- CCA48962
- CC65321
- CC65322
- CC65323
- CC65324
- CC65325
- CC65326
- CC65327
- CC65328
- CC65329
- CC65330
- CC65331
- CC65332
- CC65333
- CC65334
- CC65335
- CC65336
- CC65337
- CC65338
- CC65339
- CC65340
- CC65341
- CC65342
- CC65343
- CC65344

7040000 mN

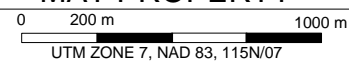
7039000 mN

516000 mE

517000 mE

**SILVER QUEST RESOURCES LTD.  
 ATAC RESOURCES LTD.**

**FIGURE 5**  
 ARCHER, CATHRO & ASSOCIATES (1981) LIMITED  
**SOIL SAMPLE LOCATIONS**  
 MAT PROPERTY



FILE: ...2009/DAWSON RANGE GOLD/MAT      DATE: JAN 2010

**REFERENCES**

Gordey, S.P. and Makepeace, A.J. (comp.).

1999 Yukon digital geology, Geological Survey of Canada; Open File D3826 and Exploration and Geological Services Division, Yukon Region, Indian and Northern Affairs Canada.

LeBarge, W.P

2007 Yukon Placer Data 2007-Geology and mining activity of placer occurrences; Yukon Geological Survey; Placer Secretariat.

**APPENDIX I**  
**STATEMENT OF QUALIFICATIONS**

## **STATEMENT OF QUALIFICATIONS**

I, Heather Smith, geologist, with business addresses in Vancouver, British Columbia and Whitehorse, Yukon Territory and residential address at #604-175 West 1 Street, North Vancouver, British Columbia, V7M 3N9 do hereby certify that:

1. I graduated from the University of British Columbia in 2006 with a B. Sc in Geological Sciences.
2. From 2004 to present, I have been actively engaged in mineral exploration in the Yukon Territory, British Columbia and Northwest Territories.
3. I am a Geoscientist in Training (GIT) with the Association of Professional Engineers and Geoscientists of British Columbia (Member Number 150000).
4. I have personally directed the fieldwork reported herein and have interpreted all data resulting from this work.

Heather Smith, B.Sc. Geology, GIT

**APPENDIX II**  
**CERTIFICATES OF ANALYSIS**



# ALS Chemex

**EXCELLENCE IN ANALYTICAL CHEMISTRY**

ALS Canada Ltd.

2103 Dollarton Hwy  
North Vancouver BC V7H 0A7

Phone: 604 984 0221 Fax: 604 984 0218 www.alschemex.com

To: ATAC RESOURCES LTD.  
C/O ARCHER, CATHRO & ASSOCIATES (1981)  
LIMITED  
1016-510 W HASTINGS ST  
VANCOUVER BC V6B 1L8

Page: 1  
Finalized Date: 26-SEP-2009  
Account: RCM

## CERTIFICATE VA09097161

Project: MAT

P.O. No.:

This report is for 53 Soil samples submitted to our lab in Vancouver, BC, Canada on 8-SEP-2009.

The following have access to data associated with this certificate:

AL ARCHER  
BILL WENGZYNOWSKI

DOUG EATON

JOAN MARIACHER

## SAMPLE PREPARATION

ALS CODE	DESCRIPTION
WEI-21	Received Sample Weight
LOG-22	Sample login - Rcd w/o BarCode
SCR-41	Screen to -180um and save both

## ANALYTICAL PROCEDURES

ALS CODE	DESCRIPTION	INSTRUMENT
Au-ICP21	Au 30g FA ICP-AES Finish	ICP-AES
ME-ICP41	35 Element Aqua Regia ICP-AES	ICP-AES

To: ATAC RESOURCES LTD.  
ATTN: AL ARCHER  
C/O ARCHER, CATHRO & ASSOCIATES (1981) LIMITED  
1016-510 W HASTINGS ST  
VANCOUVER BC V6B 1L8

This is the Final Report and supersedes any preliminary report with this certificate number. Results apply to samples as submitted. All pages of this report have been checked and approved for release.

Signature:

Colin Ramshaw, Vancouver Laboratory Manager





# ALS Chemex

EXCELLENCE IN ANALYTICAL CHEMISTRY

ALS Canada Ltd.

2103 Dollarton Hwy

North Vancouver BC V7H 0A7

Phone: 604 984 0221 Fax: 604 984 0218 www.alschemex.com

To: ATAC RESOURCES LTD.

C/O ARCHER, CATHRO & ASSOCIATES (1981)

LIMITED

1016-510 W HASTINGS ST

VANCOUVER BC V6B 1L8

Project: MAT

Page: 2 - A

Total # pages: 3 (A - C)

Finalized Date: 26-SEP-2009

Account: RCM

## CERTIFICATE OF ANALYSIS VA09097161

Sample Description	Method	WEI-21	Au-ICP21	ME-ICP41	ME-ICP41	ME-ICP41	ME-ICP41	ME-ICP41	ME-ICP41	ME-ICP41	ME-ICP41	ME-ICP41	ME-ICP41	ME-ICP41	ME-ICP41	ME-ICP41
	Analyte	Recvd Wt.	Au	Ag	Al	As	B	Ba	Be	Bi	Ca	Cd	Co	Cr	Cu	Fe
Units		kg	ppm	ppm	%	ppm	ppm	ppm	ppm	ppm	%	ppm	ppm	ppm	ppm	%
LOR		0.02	0.001	0.2	0.01	2	10	10	0.5	2	0.01	0.5	1	1	1	0.01
CC48932		0.14	0.005	0.2	1.72	21	<10	260	<0.5	<2	0.51	<0.5	12	33	25	3.13
CC48933		0.14	0.003	0.3	1.09	29	<10	230	<0.5	<2	0.74	0.5	15	37	30	2.77
CC48934		0.18	0.004	<0.2	0.64	10	<10	90	<0.5	<2	0.12	<0.5	4	5	8	1.58
CC48935		0.20	0.004	0.3	1.49	13	<10	390	<0.5	<2	0.71	<0.5	9	31	25	2.37
CC48936		0.14	0.004	0.5	1.60	44	<10	370	0.6	<2	1.13	0.5	17	99	53	3.57
CC48937		0.12	0.004	0.5	1.71	15	<10	350	<0.5	<2	0.53	<0.5	11	36	34	2.79
CC48938		0.10	0.004	0.7	1.32	14	<10	210	<0.5	3	0.98	<0.5	14	38	38	2.58
CC48939		0.12	0.004	0.4	1.50	15	<10	210	<0.5	2	0.50	<0.5	11	39	31	2.67
CC48940		0.14	0.002	0.5	1.41	18	<10	290	<0.5	<2	1.07	0.7	13	37	39	2.69
CC48941		0.18	0.005	0.4	1.31	23	<10	190	<0.5	<2	0.41	0.5	14	34	32	3.12
CC48942		0.16	0.004	0.4	0.86	17	<10	600	0.5	2	0.63	<0.5	15	26	105	4.25
CC48943		0.22	0.003	0.5	1.77	23	<10	590	0.5	<2	0.44	<0.5	15	42	43	3.42
CC48944		0.14	0.003	0.4	1.13	11	<10	180	<0.5	2	0.14	<0.5	4	20	21	1.91
CC48945		0.16	0.003	0.2	0.97	28	<10	230	<0.5	<2	0.39	<0.5	10	29	36	2.63
CC48946		0.24	0.003	0.3	1.81	19	<10	470	0.5	<2	0.87	<0.5	26	137	58	5.36
CC48947		0.20	0.005	0.3	1.43	13	<10	450	<0.5	<2	0.76	<0.5	16	23	53	3.99
CC48948		0.20	0.006	0.3	1.15	7	<10	430	<0.5	<2	0.40	<0.5	5	21	21	1.55
CC48949		0.24	0.002	0.3	1.16	8	<10	240	<0.5	<2	0.60	<0.5	10	31	24	3.31
CC48950		0.16	0.002	0.3	1.38	6	<10	450	<0.5	2	0.29	<0.5	5	22	19	2.13
CC48953		0.18	0.006	<0.2	2.05	5	<10	700	0.5	<2	0.41	<0.5	14	28	69	3.36
CC48954		0.24	0.005	0.2	2.15	9	<10	520	<0.5	<2	0.44	<0.5	12	30	41	3.31
CC48955		0.24	0.003	0.4	1.74	6	<10	440	0.5	<2	0.39	<0.5	9	29	29	3.02
CC48956		0.18	0.002	0.2	1.91	11	<10	170	<0.5	<2	0.19	<0.5	16	36	30	3.02
CC48957		0.20	0.019	0.2	1.46	5	<10	630	0.6	<2	0.37	<0.5	14	26	55	3.86
CC48958		0.16	0.003	0.4	1.87	13	<10	450	0.5	<2	0.49	<0.5	10	34	33	2.94
CC48959		0.24	0.003	0.2	2.04	8	<10	290	<0.5	<2	0.50	<0.5	11	34	27	3.14
CC48960		0.18	0.005	0.4	1.83	10	<10	290	0.5	<2	0.59	<0.5	9	32	50	2.86
CC48961		0.20	0.004	0.2	1.55	7	<10	230	<0.5	<2	0.60	<0.5	9	30	38	2.63
CC48962		0.20	0.006	0.2	1.49	10	<10	220	<0.5	<2	0.67	<0.5	11	30	39	2.76
CC65321		0.30	0.001	0.3	1.48	6	<10	200	<0.5	<2	0.31	<0.5	12	23	37	2.66
CC65322		0.28	0.003	0.4	1.21	4	<10	220	<0.5	<2	0.31	<0.5	11	15	24	2.25
CC65323		0.30	0.002	<0.2	1.67	3	<10	230	0.5	<2	0.58	<0.5	12	27	28	3.23
CC65324		0.26	0.005	0.2	2.25	7	<10	120	0.5	2	0.15	<0.5	12	39	25	3.55
CC65325		0.28	0.002	0.2	2.54	7	<10	230	0.6	<2	0.36	<0.5	14	33	19	4.56
CC65326		0.34	0.004	<0.2	2.15	6	<10	240	0.5	2	0.33	<0.5	11	34	29	3.11
CC65327		0.28	0.003	<0.2	1.84	3	<10	130	<0.5	2	0.14	<0.5	8	22	39	3.13
CC65328		0.30	0.001	<0.2	5.73	2	<10	680	1.8	<2	0.23	<0.5	35	45	23	7.50
CC65329		0.18	0.003	<0.2	2.39	8	<10	190	<0.5	<2	0.11	<0.5	10	46	39	3.55
CC65330		0.24	0.002	<0.2	2.31	2	<10	130	<0.5	<2	0.45	<0.5	16	165	42	2.85
CC65331		0.20	0.002	<0.2	2.57	2	<10	100	<0.5	<2	0.22	<0.5	18	165	64	3.05



# ALS Chemex

EXCELLENCE IN ANALYTICAL CHEMISTRY

ALS Canada Ltd.

2103 Dollarton Hwy  
North Vancouver BC V7H 0A7

Phone: 604 984 0221 Fax: 604 984 0218 www.alschemex.com

To: ATAC RESOURCES LTD.  
C/O ARCHER, CATHRO & ASSOCIATES (1981)  
LIMITED  
1016-510 W HASTINGS ST  
VANCOUVER BC V6B 1L8

Project: MAT

Page: 2 - B  
Total # Pages: 3 (A - C)  
Finalized Date: 26-SEP-2009  
Account: RCM

## CERTIFICATE OF ANALYSIS VA09097161

Sample Description	Method Analyte Units LOR	ME-ICP41	ME-ICP41	ME-ICP41	ME-ICP41	ME-ICP41	ME-ICP41	ME-ICP41	ME-ICP41	ME-ICP41	ME-ICP41	ME-ICP41	ME-ICP41	ME-ICP41	ME-ICP41	
		Ga	Hg	K	La	Mg	Mn	Mo	Na	Ni	P	Pb	S	Sb	Sc	Sr
		ppm	ppm	%	ppm	%	ppm	ppm	%	ppm	ppm	ppm	%	ppm	ppm	ppm
		10	1	0.01	10	0.01	5	1	0.01	1	10	2	0.01	2	1	1
CC48932		<10	<1	0.05	10	0.57	547	1	0.03	21	570	10	0.03	<2	5	36
CC48933		<10	<1	0.06	10	0.77	651	4	0.02	29	480	15	0.05	2	3	46
CC48934		<10	<1	0.13	20	0.29	143	1	0.01	4	410	19	0.01	<2	1	10
CC48935		<10	<1	0.06	20	0.46	362	2	0.02	21	440	12	0.02	<2	4	35
CC48936		<10	<1	0.06	10	0.84	797	4	0.02	67	660	16	0.04	4	8	44
CC48937		<10	<1	0.05	20	0.61	417	2	0.03	20	490	13	0.02	<2	4	46
CC48938		<10	<1	0.04	20	0.79	687	2	0.02	26	560	21	0.05	<2	3	50
CC48939		<10	<1	0.04	10	0.73	324	3	0.02	24	440	13	0.02	2	4	29
CC48940		<10	<1	0.04	10	0.70	939	3	0.02	37	650	17	0.05	2	4	50
CC48941		<10	<1	0.06	20	0.58	615	2	0.02	23	490	57	0.03	2	4	31
CC48942		<10	<1	0.11	20	0.32	604	1	0.02	52	550	17	0.04	2	8	41
CC48943		<10	<1	0.06	10	0.48	598	1	0.02	43	290	12	0.01	3	6	35
CC48944		<10	<1	0.04	10	0.21	110	1	0.02	14	160	6	<0.01	2	2	15
CC48945		<10	<1	0.04	10	0.29	228	3	0.02	48	190	8	0.01	2	3	38
CC48946		<10	<1	0.04	10	1.08	503	<1	0.02	135	680	6	0.03	3	15	51
CC48947		<10	1	0.04	10	0.69	458	1	0.02	22	630	6	0.03	<2	6	39
CC48948		<10	<1	0.05	20	0.29	86	<1	0.02	11	330	12	0.01	<2	4	26
CC48949		<10	<1	0.03	10	0.56	484	1	0.02	13	380	6	0.04	<2	5	38
CC48950		<10	<1	0.05	20	0.31	169	1	0.02	13	370	11	0.02	2	4	21
CC48953		10	<1	0.07	10	1.02	462	<1	0.02	20	380	7	0.01	2	5	34
CC48954		10	<1	0.05	10	0.68	326	<1	0.02	21	340	6	<0.01	3	5	28
CC48955		<10	<1	0.04	30	0.45	295	<1	0.02	18	380	9	0.01	<2	9	18
CC48956		10	<1	0.06	10	0.67	403	1	0.01	24	340	11	0.01	4	3	16
CC48957		<10	<1	0.06	20	0.37	445	1	0.02	20	480	7	0.01	2	8	23
CC48958		<10	<1	0.05	10	0.52	371	<1	0.02	22	360	8	0.01	4	7	31
CC48959		<10	<1	0.06	10	0.56	343	1	0.02	17	300	7	0.01	2	6	30
CC48960		<10	<1	0.05	10	0.52	349	1	0.03	21	470	10	0.01	2	5	39
CC48961		<10	<1	0.05	10	0.51	352	1	0.03	21	640	7	0.01	3	4	37
CC48962		<10	<1	0.07	10	0.61	372	<1	0.04	26	740	8	0.01	2	5	39
CC65321		<10	<1	0.07	10	0.84	488	<1	0.01	12	230	4	0.01	<2	3	27
CC65322		<10	<1	0.07	10	0.43	782	1	0.02	9	390	6	0.03	<2	3	25
CC65323		<10	<1	0.06	10	0.93	685	1	0.01	15	590	4	0.02	2	5	41
CC65324		10	<1	0.04	10	0.87	338	1	0.01	18	160	5	0.01	<2	4	16
CC65325		10	<1	0.28	10	1.44	423	<1	0.02	18	530	5	0.02	2	6	23
CC65326		10	1	0.09	10	0.95	361	<1	0.02	22	610	5	0.02	2	5	24
CC65327		10	<1	0.05	10	0.67	368	1	0.02	10	450	13	0.02	2	3	15
CC65328		20	1	2.44	10	5.22	885	<1	0.02	34	480	4	0.01	2	31	14
CC65329		10	1	0.10	10	0.89	234	1	0.02	24	350	6	0.01	<2	3	13
CC65330		10	<1	0.02	<10	1.87	361	<1	0.02	79	340	3	0.01	<2	5	21
CC65331		10	<1	0.02	<10	2.29	558	<1	0.02	74	170	<2	0.01	<2	7	13



# ALS Chemex

EXCELLENCE IN ANALYTICAL CHEMISTRY

ALS Canada Ltd.

2103 Dollarton Hwy

North Vancouver BC V7H 0A7

Phone: 604 984 0221 Fax: 604 984 0218 www.alschemex.com

To: ATAC RESOURCES LTD.

C/O ARCHER, CATHRO & ASSOCIATES (1981)

LIMITED

1016-510 W HASTINGS ST

VANCOUVER BC V6B 1L8

Project: MAT

Page: 2 - C

Total # Pages: 3 (A - C)

Finalized Date: 26-SEP-2009

Account: RCM

## CERTIFICATE OF ANALYSIS VA09097161

Sample Description	Method Analyte Units LOR	ME-ICP41	ME-ICP41	ME-ICP41	ME-ICP41	ME-ICP41	ME-ICP41	ME-ICP41
		Th	Ti	Ti	U	V	W	Zn
		ppm	%	ppm	ppm	ppm	ppm	ppm
		20	0.01	10	10	1	10	2
CC48932		<20	0.09	<10	<10	65	<10	71
CC48933		<20	0.03	<10	<10	42	<10	78
CC48934		<20	0.02	<10	<10	7	<10	50
CC48935		<20	0.06	<10	<10	46	<10	47
CC48936		<20	0.04	<10	<10	56	<10	93
CC48937		<20	0.08	<10	<10	58	<10	57
CC48938		<20	0.04	<10	<10	40	<10	63
CC48939		<20	0.05	<10	<10	49	<10	64
CC48940		<20	0.04	<10	<10	44	<10	87
CC48941		<20	0.03	<10	<10	50	<10	93
CC48942		<20	0.02	<10	<10	72	<10	96
CC48943		<20	0.06	<10	<10	63	<10	72
CC48944		<20	0.06	<10	<10	48	<10	30
CC48945		<20	0.03	<10	<10	43	<10	52
CC48946		<20	0.02	<10	<10	110	<10	73
CC48947		<20	0.04	<10	<10	94	<10	74
CC48948		<20	0.04	<10	<10	38	<10	49
CC48949		<20	0.03	<10	<10	47	<10	57
CC48950		<20	0.03	<10	<10	39	<10	40
CC48953		<20	0.08	<10	<10	86	<10	62
CC48954		<20	0.08	<10	<10	76	<10	58
CC48955		<20	0.06	<10	<10	51	<10	55
CC48956		<20	0.07	<10	<10	49	<10	88
CC48957		<20	0.04	<10	<10	59	<10	50
CC48958		<20	0.08	<10	<10	61	<10	55
CC48959		<20	0.09	<10	<10	65	<10	51
CC48960		<20	0.10	<10	<10	61	<10	53
CC48961		<20	0.10	<10	<10	59	<10	49
CC48962		<20	0.11	<10	<10	61	<10	61
CC65321		<20	0.06	<10	<10	47	<10	48
CC65322		<20	0.04	<10	<10	34	<10	37
CC65323		<20	0.04	<10	<10	54	<10	49
CC65324		<20	0.11	<10	<10	75	<10	45
CC65325		<20	0.16	<10	<10	136	<10	48
CC65326		<20	0.12	<10	<10	65	<10	45
CC65327		<20	0.09	<10	<10	64	<10	58
CC65328		<20	0.51	<10	<10	277	<10	87
CC65329		<20	0.14	<10	<10	78	<10	45
CC65330		<20	0.11	<10	<10	78	<10	31
CC65331		<20	0.07	<10	<10	85	<10	37



# ALS Chemex

**EXCELLENCE IN ANALYTICAL CHEMISTRY**

ALS Canada Ltd

2103 Dollarton Hwy  
North Vancouver BC V7H 0A7

Phone: 604 984 0221 Fax: 604 984 0218 www.alschemex.com

To: ATAC RESOURCES LTD.  
C/O ARCHER, CATHRO & ASSOCIATES (1981)  
LIMITED  
1016-510 W HASTINGS ST  
VANCOUVER BC V6B 1L8

Project: MAT

Page: 3 - A  
Total # Pages: 3 (A - C)  
Finalized Date: 26-SEP-2009  
Account: RCM

## CERTIFICATE OF ANALYSIS VA09097161

Sample Description	Method Analyte Units LOR	WEI-21	Au-ICP21	ME-ICP41	ME-ICP41	ME-ICP41	ME-ICP41	ME-ICP41	ME-ICP41	ME-ICP41	ME-ICP41	ME-ICP41	ME-ICP41	ME-ICP41	ME-ICP41	ME-ICP41
		Recvd Wt. kg	Au ppm	Ag ppm	Al %	As ppm	B ppm	Ba ppm	Be ppm	Bi ppm	Ca %	Cd ppm	Co ppm	Cr ppm	Cu ppm	Fe %
		0.02	0.001	0.2	0.01	2	10	10	0.5	2	0.01	0.5	1	1	1	0.01
CC65332		0.24	0.002	<0.2	2.63	8	<10	150	<0.5	2	0.10	<0.5	12	69	42	3.33
CC65333		0.14	0.002	<0.2	1.44	2	<10	90	<0.5	<2	0.15	<0.5	7	44	25	1.92
CC65334		0.22	0.006	<0.2	1.58	5	<10	200	<0.5	<2	0.49	<0.5	9	40	28	2.51
CC65335		0.26	0.007	<0.2	1.49	4	<10	240	<0.5	2	0.48	<0.5	8	33	21	2.27
CC65336		0.26	0.008	<0.2	1.49	5	<10	190	<0.5	2	0.36	<0.5	9	36	21	2.32
CC65337		0.26	0.003	<0.2	1.50	4	<10	170	<0.5	<2	0.39	<0.5	8	39	20	2.33
CC65338		0.26	0.003	<0.2	1.58	3	<10	180	<0.5	<2	0.34	<0.5	8	39	23	2.34
CC65339		0.22	0.005	<0.2	1.60	6	<10	200	<0.5	2	0.49	<0.5	8	32	22	2.49
CC65340		0.24	0.004	<0.2	1.39	4	<10	240	<0.5	<2	0.80	<0.5	9	27	25	2.45
CC65341		0.14	0.005	<0.2	1.40	5	<10	230	<0.5	<2	0.68	<0.5	9	28	27	2.36
CC65342		0.18	0.003	<0.2	1.47	7	<10	260	<0.5	<2	0.67	<0.5	10	33	23	2.69
CC65343		0.24	0.005	<0.2	1.41	6	<10	230	<0.5	2	0.58	<0.5	9	33	23	2.30
CC65344		0.18	0.009	<0.2	1.43	4	<10	250	<0.5	<2	0.56	<0.5	7	30	29	1.79



# ALS Chemex

**EXCELLENCE IN ANALYTICAL CHEMISTRY**

ALS Canada Ltd.

2103 Dollarton Hwy  
North Vancouver BC V7H 0A7

Phone: 604 984 0221 Fax: 604 984 0218 www.alschemex.com

To: ATAC RESOURCES LTD.  
C/O ARCHER, CATHRO & ASSOCIATES (1981)  
LIMITED  
1016-510 W HASTINGS ST  
VANCOUVER BC V6B 1L8

Project: MAT

Page: 3 - B  
Total # Pages: 3 (A - C)  
Finalized Date: 26-SEP-2009  
Account: RCM

## CERTIFICATE OF ANALYSIS VA09097161

Sample Description	Method Analyte Units LOR	ME-ICP41	ME-ICP41	ME-ICP41	ME-ICP41	ME-ICP41	ME-ICP41	ME-ICP41	ME-ICP41	ME-ICP41	ME-ICP41	ME-ICP41	ME-ICP41	ME-ICP41	ME-ICP41	
		Ga	Hg	K	La	Mg	Mn	Mo	Na	Ni	P	Pb	S	Sb	Sc	Sr
		ppm	ppm	%	ppm	%	ppm	ppm	%	ppm	ppm	ppm	%	ppm	ppm	ppm
		10	1	0.01	10	0.01	5	1	0.01	1	10	2	0.01	2	1	1
CC65332		10	1	0.03	10	0.87	269	1	0.02	29	190	6	0.01	2	4	11
CC65333		10	<1	0.03	<10	0.66	175	1	0.02	21	140	3	0.01	<2	2	15
CC65334		10	1	0.06	10	0.70	359	<1	0.03	25	550	6	0.02	<2	4	30
CC65335		<10	<1	0.04	10	0.59	309	<1	0.03	18	360	6	0.02	2	3	27
CC65336		<10	<1	0.03	10	0.62	261	<1	0.02	19	390	6	0.01	<2	4	23
CC65337		<10	<1	0.03	10	0.68	282	<1	0.02	18	340	5	0.01	2	3	24
CC65338		<10	<1	0.03	10	0.66	245	<1	0.02	19	310	6	0.01	<2	4	23
CC65339		10	<1	0.04	10	0.59	248	<1	0.03	19	570	6	0.02	2	4	32
CC65340		<10	<1	0.06	10	0.54	369	<1	0.04	22	630	4	0.01	<2	4	41
CC65341		<10	<1	0.05	10	0.53	344	1	0.04	21	700	5	0.02	2	4	42
CC65342		<10	<1	0.04	10	0.61	334	<1	0.03	20	640	6	0.04	2	4	38
CC65343		<10	<1	0.04	10	0.59	262	<1	0.03	19	640	7	0.04	<2	4	32
CC65344		<10	<1	0.04	10	0.53	190	<1	0.03	17	580	7	0.06	<2	4	33



# ALS Chemex

**EXCELLENCE IN ANALYTICAL CHEMISTRY**

ALS Canada Ltd.

2103 Dollarton Hwy  
North Vancouver BC V7H 0A7

Phone: 604 984 0221 Fax: 604 984 0218 www.alschemex.com

To: ATAC RESOURCES LTD.  
C/O ARCHER, CATHRO & ASSOCIATES (1981)  
LIMITED  
1016-510 W HASTINGS ST  
VANCOUVER BC V6B 1L8

Project: MAT

Page: 3 - C  
Total # Pages: 3 (A - C)  
Finalized Date: 26-SEP-2009  
Account: RCM

## CERTIFICATE OF ANALYSIS VA09097161

Sample Description	Method Analyte Units LOR	ME-ICP41	ME-ICP41	ME-ICP41	ME-ICP41	ME-ICP41	ME-ICP41	ME-ICP41
		Th ppm	Ti %	Tl ppm	U ppm	V ppm	W ppm	Zn ppm
		20	0.01	10	10	1	10	2
CC65332		<20	0.13	<10	<10	82	<10	40
CC65333		<20	0.09	<10	<10	53	<10	25
CC65334		<20	0.10	<10	<10	58	<10	50
CC65335		<20	0.07	<10	<10	51	<10	35
CC65336		<20	0.08	<10	<10	51	<10	36
CC65337		<20	0.08	<10	<10	55	<10	37
CC65338		<20	0.09	<10	<10	55	<10	39
CC65339		<20	0.09	<10	<10	57	<10	42
CC65340		<20	0.09	<10	<10	55	<10	42
CC65341		<20	0.09	<10	<10	55	<10	41
CC65342		<20	0.08	<10	<10	57	<10	49
CC65343		<20	0.07	<10	<10	54	<10	48
CC65344		<20	0.07	<10	<10	44	<10	45

095170

2001106

ARCHER, CATHRO & ASSOCIATES (1981) LIMITED  
1016 - 510 West Hastings Street  
Vancouver, B.C. V6B 1L8

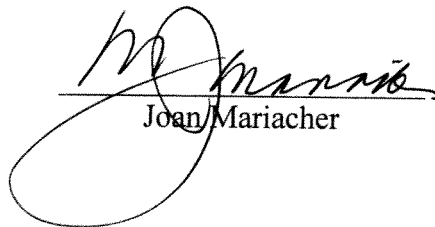
Telephone: 604-688-2568

Fax: 604-688-2578

AFFIDAVIT

I, Joan Mariacher, of Vancouver, B.C. make oath and say:

That to the best of my knowledge the attached Statement of  
Expenditures for exploration work on the Mat 1-26 mineral  
claims on Claim Sheet 115N/7 is accurate.

  
Joan Mariacher

Sworn before me at Vancouver, B.C.

this 3rd of September 2009.

  
Notary Public, Yukon Territory



2001106

Statement of Expenditures  
MAT 1-26 Mineral Claims  
September 3, 2009

Labour

R. Nelson (field assistant) – August 22 – 1 day @ \$440/day	\$ 462.00
E. Jacobsen (field assistant) – August 22 – 1 day @ \$288/day	<u>302.40</u>
	764.40

Expenses

Field room and board – 2 @ \$125/day	262.50
Fireweed Helicopters – 2.5 hrs @ \$995/hr plus fuel	<u>3,000.90</u>
	3,263.40

Total	<u>\$4,027.80</u>
-------	-------------------

