

StrataGold Corporation

#701, 475 Howe Street
Vancouver, BC, Canada
V6C 2B3

Clear Creek Property, ASSESSMENT REPORT 2004**BZ 1-79 YB94420-YB94498****CC 100-131 YB47966-YB47997**

Title: 2004 Clear Creek Property Assessment Report
Orthophoto Acquisition and Satellite Imagery
Report

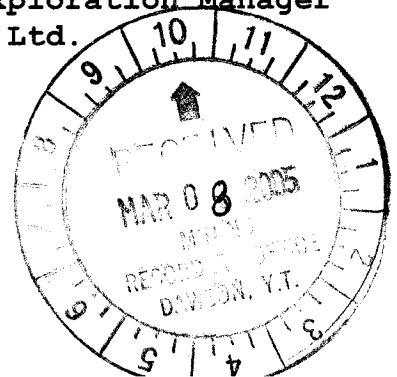
LQ00141

Location: Dawson Mining District, Yukon, approximately 110
kilometers east of Dawson City and 340 kilometers due north of
Whitehorse

Dates of Work: December 21, 2004

Prepared by: David Hladky Senior Project Geologist,
StrataGold Corporation

Supervised by: Jim Sparling, MBA, B.Sc., P.Geo, Exploration Manager
StrataGold Corporation (Canada) Ltd.



Costs associated with this report have been
approved in the amount of \$ 11,100
for assessment credit under Certificate of
Work No. 200571

H. Lerry

Mining Recorder
Dawson City Mining District

788400

TABLE OF CONTENTS

ITEM	PAGE
1. INTRODUCTION _____	1
a. Figure 1: Dublin Gulch and Surrounding Area Claims Location Map, Including Clear Creek Property _____	1
b. Table 1: List of Quartz Mining Claims Comprising the Clear Creek Property _____	2
c. Figure 2: Clear Creek Claims Map _____	4
2. ORTHOPHOTO MAPS - GENERAL INFORMATION _____	5
3. ORTHOPHOTO MAPS - DESCRIPTION OF WORK AND METHOD OF ANALYSIS _____	5
4. ORTHOPHOTO MAPS - STATEMENT OF EXPENDITURES _____	6
a. Table 4 Orthophoto Maps Statement of Expenditures _____	6
5. ORTHOPHOTO MAPS - RECOMMENDATIONS _____	6
6. CERTIFICATES OF QUALIFICATION _____	7

1. INTRODUCTION

The Clear Creek Project dispositions are located in the Dawson Mining District, Yukon Territory, approximately 110 kilometres east of Dawson City and 340 kilometres due north of Whitehorse, Yukon Territory. The property comprises 639 contiguous quartz mining claims covering approximately 126.0 square kilometers of land that is 100% owned by StrataGold Corporation. The Clear Creek Property Claims Compilation is detailed in Table 1 and Figure 2.

This report details for assessment the acquisition of Orthophoto Maps and accompanying Satellite Imagery Report and Interpretation for the Clear Creek property in 2004.

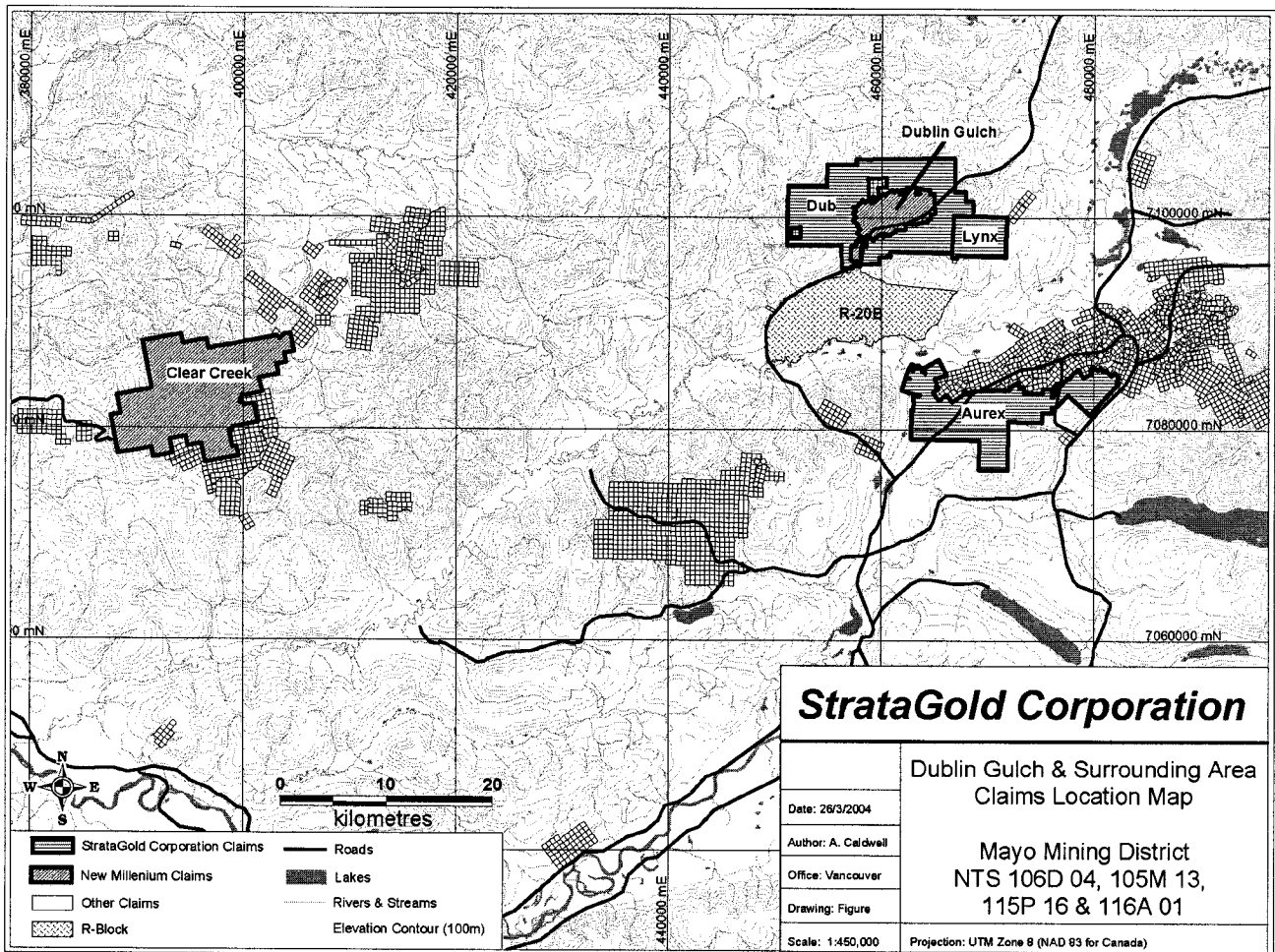


Figure 1: Dublin Gulch & Surrounding Area Claims Location Map, including Clear Creek Property

Table 1: List of Quartz Mining Claims Comprising the Clear Creek Property

Claim Name	Claim Number	Grant Number	Expiry Date	Claim Type	Claim Owner	Percent Ownership
Rain	1	YA31503	12/31/2005	Q	StrataGold Corporation	100
Rain	3	YA31504	12/31/2005	Q	StrataGold Corporation	100
Rain	5	YA31505	12/31/2005	Q	StrataGold Corporation	100
Rain	7	YA31506	12/31/2005	Q	StrataGold Corporation	100
Rain	9	YA31507	12/31/2005	Q	StrataGold Corporation	100
Rain	11	YA31508	12/31/2005	Q	StrataGold Corporation	100
Rain	13	YA31509	12/31/2005	Q	StrataGold Corporation	100
Rain	2	YA31510	12/31/2005	Q	StrataGold Corporation	100
Rain	4	YA31511	12/31/2005	Q	StrataGold Corporation	100
Rain	6	YA31512	12/31/2005	Q	StrataGold Corporation	100
Rain	8	YA31513	12/31/2005	Q	StrataGold Corporation	100
Rain	10	YA31514	12/31/2005	Q	StrataGold Corporation	100
Rain	12	YA31515	12/31/2005	Q	StrataGold Corporation	100
Rain	14	YA31516	12/31/2005	Q	StrataGold Corporation	100
Rain	15	YA31517	12/31/2005	Q	StrataGold Corporation	100
Rain	25	YA31522	12/31/2005	Q	StrataGold Corporation	100
Rain	27	YA31523	12/31/2005	Q	StrataGold Corporation	100
Rain	16	YA31525	12/31/2005	Q	StrataGold Corporation	100
Rain	26	YA31530	12/31/2005	Q	StrataGold Corporation	100
Rain	28	YA31531	12/31/2005	Q	StrataGold Corporation	100
Wind	2	YA31855	12/31/2005	Q	StrataGold Corporation	100
Wind	4	YA31857	12/31/2005	Q	StrataGold Corporation	100
Wind	6	YA31859	12/31/2005	Q	StrataGold Corporation	100
Wind	8	YA31861	12/31/2005	Q	StrataGold Corporation	100
Wind	10	YA31863	12/31/2005	Q	StrataGold Corporation	100
Rum	1 to 90	YA88956 - YA89384	12/31/2005	Q	StrataGold Corporation	100
Sleet	7 to 24	YB04262 - YB04279	12/31/2005	Q	StrataGold Corporation	100
Sleet	33 to 59	YB04280 - YB04306	12/31/2005	Q	StrataGold Corporation	100
Sleet	61	YB04307	12/31/2005	Q	StrataGold Corporation	100
Sleet	63 to 68	YB04308 - YB04313	12/31/2005	Q	StrataGold Corporation	100
Sleet	69 to 84	YB04414 - YB04429	12/31/2005	Q	StrataGold Corporation	100
Sleet	87 - 110	YB04430 - YB04453	12/31/2005	Q	StrataGold Corporation	100
Sleet	111 to 144	YB04314 - YB04347	12/31/2005	Q	StrataGold Corporation	100
Rye	1 to 24	YB05624 - YB05647	12/31/2005	Q	StrataGold Corporation	100
Rye	29 to 41	YB05652 - YB05664	12/31/2005	Q	StrataGold Corporation	100
Rye	43	YB05665	12/31/2005	Q	StrataGold Corporation	100
Rye	45	YB05666	12/31/2005	Q	StrataGold Corporation	100
Rye	47	YB05667	12/31/2005	Q	StrataGold Corporation	100
Rye	49	YB05668	12/31/2005	Q	StrataGold Corporation	100
Rye	51	YB05669	12/31/2005	Q	StrataGold Corporation	100

Rye	54	YB05671	12/31/2005	Q	StrataGold Corporation	100
Rye	56	YB05673	12/31/2005	Q	StrataGold Corporation	100
Rye	61 to 62	YB05678 - YB05679	12/31/2005	Q	StrataGold Corporation	100
Rye	75 to 84	YB05692 - YB05701	12/31/2005	Q	StrataGold Corporation	100
Dum	1 to 34	YB40487 - YB40520	12/31/2005	Q	StrataGold Corporation	100
CC	1 to 96	YB45087 - YB45182	12/31/2005	Q	StrataGold Corporation	100
CC	97 to 131	YB47963 - YB47997	12/31/2005	Q	StrataGold Corporation	100
Wet	1 to 28	YB45604 - YB45631	12/31/2005	Q	StrataGold Corporation	100
BZ	1 to 79	YB94420 - YB94498	12/31/2005	Q	StrataGold Corporation	100
Jo	1 to 70	YB94499 - YB94568	12/31/2005	Q	StrataGold Corporation	100

