

Assessment Report
HELICOPTER MAGNETIC SURVEY
for
IT'S YOUR NICKEL EXPLORATION LTD.
on the
QUIET LAKE NICKEL PROJECT
Canol Road Area, Yukon Territories
Whitehorse and Watson Lake Mining District

MAPSHEET 105 - F2, F3, F6, F7

Latitude 61° 16' 00", Longitude 133° 04' 00"

Survey Conducted by
Donegal Developments Ltd.
September 5 – September 28, 2007

Report by
Ronald F. Sheldrake,
Donegal Developments Ltd.

February 1, 2008

TABLE OF CONTENTS

1. Summary.....	1
2. Purpose of Survey.....	2
3. Survey Grid, Procedure and Personnel.....	3
3.1 Survey Grid.....	3
3.2 Field Activities.....	3
3.3 Magnetic Surveying Procedure.....	4
3.4 Survey Personnel.....	4
4. Equipment Used for this Survey.....	5
5. Geophysical Techniques.....	5
5.1 Magnetic Method.....	5
6. Data Presentation.....	6
6.1 Image Map Deliverables.....	6
6.2 Digital Data Deliverables.....	6
7. Discussion of the Survey Data.....	7
Bibliography.....	8
Appendix 1 – Statement of Qualifications, R. Sheldrake.....	9
Appendix 2 – Expenditures for Quiet Lake Project.....	10
Appendix 3 – Listing of Claims with Expiry Dates.....	11

ILLUSTRATIONS

Illustration 1: 500D Geophysical System.....	1
Illustration 2: Quiet Lake Magnetic Survey Location Map.....	2
Illustration 3: Quiet Lake Survey Grid (Canol Road Area).....	3

LIST OF MAPS WITH THIS REPORT

AP NAME	SCALE
MAP 1 – Total Magnetic Intensity Map (shows claim locations)	1:50,000
MAP 2 – Reduced to Pole Shaded Map	1:50,000
MAP 3 – Profiles of RTP Magnetic Field	1:50,000

LIST OF FILES ON THE CD

FILE NAME	DESCRIPTION
Maps 1 to 3	PDF files
Final Mag.gdb	Geosoft Data File
Format for Mag	Text file
Geosoft Map viewer	Zip file

1. SUMMARY

This report provides information about the acquisition, processing, and presentation of a helicopter magnetic survey over claims held by It's Your Nickel Exploration Ltd. in the Quiet Lake Area, Yukon Territories. Although the geophysical system had the capability for radiometric measurements, the radiometric data collected were rendered unusable due to snow on the ground. The Helicopter Radiometric and Magnetometer program was undertaken by Donegal Developments Ltd of Vancouver, B.C. on behalf of It's Your Nickel Exploration Ltd.(50%), International KRL Resources Corp. (25%) and Logan Resources Ltd.(25%).



Illustration 1: 500D Geophysical System

The Nickel Project was flown from the base of operations in Teslin and the intended survey comprised of a single survey block of 1295 contiguous claims. However, due to the lateness of the season, not all survey lines were completed before the survey was halted by inclement weather. A total of 895 linear km of magnetic was flown on this survey block.

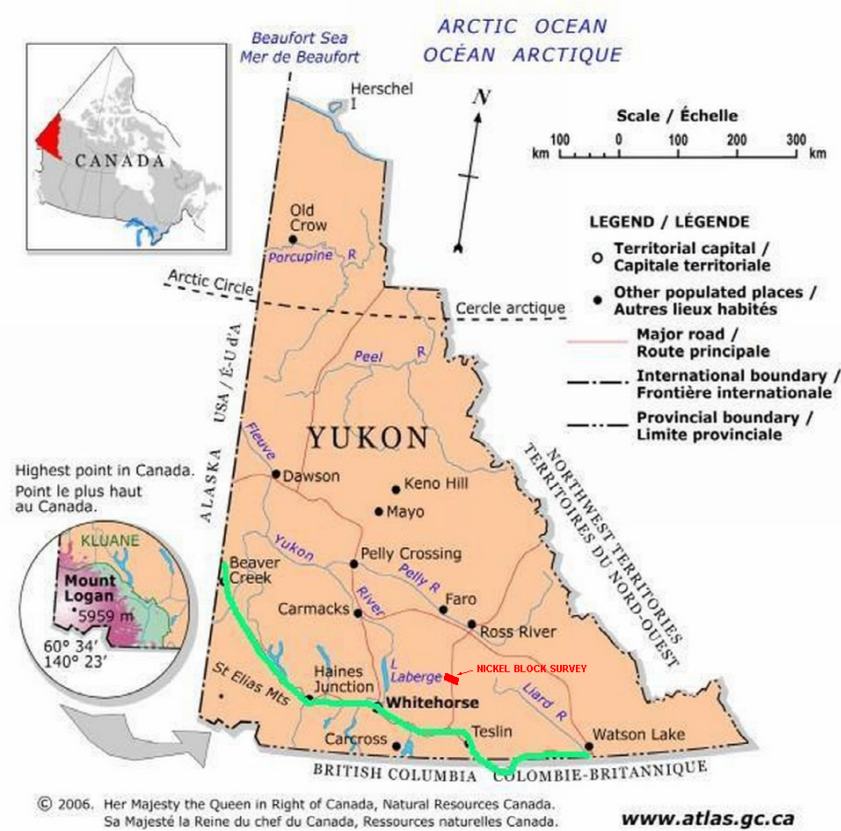


Illustration 2: Quiet Lake Magnetic Survey Location Map

This geophysical report may later form part of a more comprehensive one that will cover the details of geology, geochemistry and exploration history of the properties.

2. PURPOSE OF SURVEY

The purpose of the survey was to map the basic (magnetic) rocks underlying the claims to evaluate them for the presence of nickel and other base metal mineralization.

3. SURVEY GRID, PROCEDURE AND PERSONNEL

3.1 Survey Grid

The present survey grid is shown on the image below. The survey grid straddles the Canol Road and is comprised of 93 survey lines (1035 km) and 11 tie lines (260 km). However only 78 survey lines were completed on this survey (due to inclement weather) for a total of 895 km. On the image below, the traverse lines that were completed this are shown in black. The tie lines and survey lines that were not completed, are shown in red.

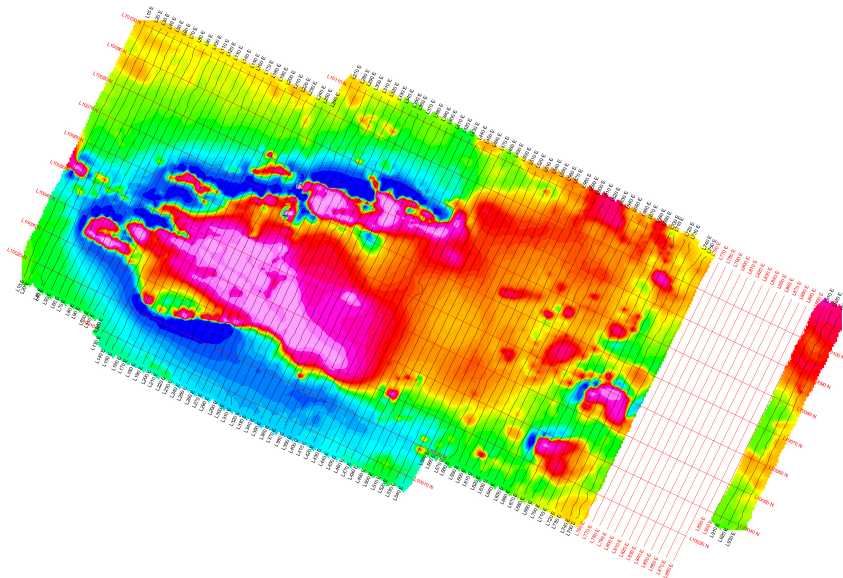


Illustration 3: Quiet Lake Survey Grid (Canol Road Area)

3.2 Field Activities

The survey was flown from the base of operations in Teslin. Other survey blocks were flown in the area while the crew waited for better weather. The criteria for which blocks were to be surveyed on any given day was entirely weather dependent.

A fuel cache was placed in the Quiet Lake area, and if the weather was unflyable, the crew waited at the cache, in the hope conditions would change for the better.

3.3 *Magnetic Surveying Procedure*

Magnetic measurements in a helicopter or fixed wing aircraft are recorded (to an accuracy of 1/10 of a nanotesla- abbreviated “nT”) as the aircraft is flying along a pre-determined flight path, normally an orthogonal survey grid of lines and tie lines. At the same time, a second magnetometer, the magnetic base-station, is located in a magnetically quiet area (no vehicles or powerlines, etc.) that records the “magnetic diurnal,” which is the varying magnetic field as a function of time. It is beneficial to have the base station in, or near, the survey area, but that is often not practicable. (The magnetic measurements were made at an interval of 1/25 per second, so that on average, the reading interval on the ground were less than 1.0 meter.)

The data are processed by subtracting the magnetic diurnal variation from the airborne data. The magnetic data are also further improved by correcting the data using the tie-line data intersection points to produce a smooth, internally corrected map. However, maps may still be slightly noisy and, further micro-leveling correction may be made after the data has been gridded. This process removes small noise variations along the traverses that may arise between the tie lines.

3.4 *Survey Personnel*

The Donegal Developments Ltd. crew for this survey comprised:

1. Ron Sheldrake, geophysicist and project manager
2. Mary Sheldrake, data processor
3. Lawrence Jay, electrical engineer and equipment operator.

The Prism Helicopter crew for this survey comprised:

4. Loren Leeuw, Dave Law and Troy Mussio, pilots
5. Kirk Roddie, Mike Bowen, aircraft engineers
6. Min Jung Suh, aircraft engineering apprentice

4. EQUIPMENT USED FOR THIS SURVEY

The equipment used for this survey was a new radiometric and magnetic system provided by PicoEnvirotec of Downsview, Ontario. It was specifically configured for the 500D helicopter installation and included the following equipment:

- A Scintrex CS-3 high-sensitivity Cesium magnetometer mounted in a cantilevered “stinger”
- A Billingsly TFM-100 Tri-axial Fluxgate Magnetometer
- A Pico-Envirotec GRS-10 self-stabilizing 256 channel gamma-ray spectrometer with 16.8 litres “downward looking” NaI(Tl) sensors and 4.2 litres of “upward looking” NaI(Tl) sensor.
- A CSI-Wireless Omnistar navigation system with a pilot steering indicator
- A Pico-Envirotech AGIS Data Acquisition System
- A Terra TRA-3000/TRI-30 Radar Altimeter.
- Campbell Scientific Model-CS500 Temperature and Relative Humidity Probe
- A SETRA Model 276 digital barometric altimeter/pressure transducer.
- Power distribution console with power supplies.

The magnetic base station equipment included:

- A PGIS (PicoEnvirotec) basestation processor
- Scintrex Cesium CS-3 Magnetometer

Details and specifications of the above equipment are provided on the PicoEnvirotec website, www.picoenvirotec.com.

5. GEOPHYSICAL TECHNIQUES

5.1 Magnetic Method

Magnetometer data are used to identify rock types, faults, and alteration zones. Much of the time, the magnetic responses arise from the minerals magnetite and pyrrhotite, and although

ilmenite, chromite, and platinum and other minerals are magnetic, they are much less so.

Magnetic maps provide a picture of the distribution of magnetic materials in the subsurface rocks. In general, localized magnetic responses (sometimes they are called “anomalies”) that arise from the surface and near surface distributions of magnetic materials, are of shorter wavelength than those that arise from deeper seated sources.

Occasionally, magnetic responses right away lead to the detection of commercial orebodies, although this is rare. For example, a massive sulphide ore-body might contain pyrrhotite as one of its constituent minerals, and the magnetic maps will therefore identify and “outline” the ore-body. However, there is a whole spectrum of magnetic responses that can arise due to mechanical, metamorphic and geochemical changes in rocks

6. DATA PRESENTATION

These days many geoscientists find that computer images are most convenient for their interpretations since other GIS information can be viewed simultaneously. However, paper map-images remain an important part of the deliverables. The present survey data are presented as both digital data and colour image-maps. Note that all maps, grids and data are located using coordinate system **NAD83 Zone 8N**. All digital data are provided in Geosoft format on CD/DVD that comes with this report.

6.1 Image Map Deliverables

1. Total Magnetic Intensity Map (TMI)
2. Reduced to Pole Shaded Map
3. RTP Magnetic Profiles Map

6.2 Digital Data Deliverables

PDF versions of maps and processed digital data (in Geosoft format) are provided. A full description of the formats are included as a text file on the CD/DVD that comes with this report.

7. DISCUSSION OF THE SURVEY DATA

Although no tie lines were collected on this dataset, the data is quite stable and no interline variations intrude with the data image. Note that some traverses were not flown due to poor weather conditions.

The survey area is predominated by a large magnetically high area, and the data suggest that it may extend to some depth, estimated to be 500 + meters, in the West and shallower in the East. The most magnetically susceptible rocks are mapped in the in the western portion of the mapsheet where the total magnetic intensity values range as high as 59200 nT.

It is noted that there is a predominant N-S fault in the area, which may be a sign of multiple stages of intrusive activity.

Two smaller magnetic zones in the eastern part of the map are perhaps smaller intrusive plugs that may warrant inspection in the upcoming season.

Respectfully submitted,

Donegal Developments Ltd.

Ronald F. Sheldrake, B.Sc. (Geophysics)

BIBLIOGRAPHY

- 1. Yukon Regional Geochemical Database 2003 - Stream sediment analyses. Exploration and Geological Services Division, Yukon Region, Indian and Northern Affairs Canada.***
- 2. Regional GSC 200 m Aeromagnetic data, NRCN***

APPENDIX 1 – STATEMENT OF QUALIFICATIONS, R. SHELDRAKE

I, **Ronald F. Sheldrake**, do certify that:

1) I received my B.Sc. in Geophysics from the University of British Columbia in 1974.

2) I have practised the profession of exploration geophysics for in excess of 30 years, much of that time collecting data, compiling and reporting on airborne geophysical surveys.

3) This report is written solely by Ronald F. Sheldrake, except where other credit is given.

February 1, 2008

Ronald F. Sheldrake
Donegal Developments Ltd.

APPENDIX 2 – EXPENDITURES FOR QUITE LAKE PROJECT

	<u>Costs/Charges</u>
1) Mobilization costs (pro rated per line km),	\$ 4,895.00
2) Geophysical Survey costs including vehicle usage, food, lodging, helicopter and fuel (895 km X \$140.00/km),	\$ 125,300.00
3) Reporting Costs-	\$ 5,750.00
TOTAL SURVEY EXPENDITURE	\$ 135,945.00

APPENDIX 3 – LISTING OF CLAIMS WITH EXPIRY DATES

International KRL Resources Corp. and Logan Resources Ltd.
 Turn River Property
 Yukon Territory
 ANNA BLOCK 1295 claims

18-Oct-07

District	Grant Number	Claim Name	Claim Num	Claim Owner	Rec Date	Expiry Date	Map
Watson Lake	YC71147	ANNA F	844	Donegal Dev.	5/15/2007	5/15/2008	105F06
Watson Lake	YC71146	ANNA	843	Donegal Dev.	5/15/2007	5/15/2008	105F06
Watson Lake	YC71145	ANNA F	842	Donegal Dev.	5/15/2007	5/15/2008	105F07
Watson Lake	YC71144	ANNA	841	Donegal Dev.	5/15/2007	5/15/2008	105F07
Watson Lake	YC71143	ANNA F	840	Donegal Dev.	5/15/2007	5/15/2008	105F07
Watson Lake	YC71142	ANNA	839	Donegal Dev.	5/15/2007	5/15/2008	105F07
Watson Lake	YC71141	ANNA	838	Donegal Dev.	5/15/2007	5/15/2008	105F07
Watson Lake	YC71140	ANNA	837	Donegal Dev.	5/15/2007	5/15/2008	105F07
Watson Lake	YC71139	ANNA	836	Donegal Dev.	5/15/2007	5/15/2008	105F07
Watson Lake	YC71138	ANNA	835	Donegal Dev.	5/15/2007	5/15/2008	105F07
Watson Lake	YC71137	ANNA	834	Donegal Dev.	5/15/2007	5/15/2008	105F07
Watson Lake	YC71136	ANNA	833	Donegal Dev.	5/15/2007	5/15/2008	105F07
Watson Lake	YC71135	ANNA	832	Donegal Dev.	5/15/2007	5/15/2008	105F07
Watson Lake	YC71134	ANNA	831	Donegal Dev.	5/15/2007	5/15/2008	105F07
Watson Lake	YC71133	ANNA	830	Donegal Dev.	5/15/2007	5/15/2008	105F07
Watson Lake	YC71132	ANNA	829	Donegal Dev.	5/15/2007	5/15/2008	105F07
Watson Lake	YC71131	ANNA	828	Donegal Dev.	5/15/2007	5/15/2008	105F07
Watson Lake	YC71130	ANNA	827	Donegal Dev.	5/15/2007	5/15/2008	105F07
Watson Lake	YC71129	ANNA	826	Donegal Dev.	5/15/2007	5/15/2008	105F07
Watson Lake	YC71128	ANNA	825	Donegal Dev.	5/15/2007	5/15/2008	105F07
Watson Lake	YC71127	ANNA	824	Donegal Dev.	5/15/2007	5/15/2008	105F07
Watson Lake	YC71126	ANNA	823	Donegal Dev.	5/15/2007	5/15/2008	105F07
Watson Lake	YC71125	ANNA	822	Donegal Dev.	5/15/2007	5/15/2008	105F07
Watson Lake	YC71124	ANNA	821	Donegal Dev.	5/15/2007	5/15/2008	105F07
Watson Lake	YC71123	ANNA	820	Donegal Dev.	5/15/2007	5/15/2008	105F07
Watson Lake	YC71122	ANNA	819	Donegal Dev.	5/15/2007	5/15/2008	105F07
Watson Lake	YC71121	ANNA	818	Donegal Dev.	5/15/2007	5/15/2008	105F07
Watson Lake	YC71120	ANNA	817	Donegal Dev.	5/15/2007	5/15/2008	105F07
Watson Lake	YC71119	ANNA	816	Donegal Dev.	5/15/2007	5/15/2008	105F07
Watson Lake	YC71118	ANNA	815	Donegal Dev.	5/15/2007	5/15/2008	105F07

Quiet Lake Nickel Project, YT – Magnetic Survey, September 2007

Watson Lake	YC71117	ANNA F	797Donegal Dev.	5/15/2007	5/15/2008	105F06
Watson Lake	YC71116	ANNA F	795Donegal Dev.	5/15/2007	5/15/2008	105F06
Watson Lake	YC71115	ANNA F	793Donegal Dev.	5/15/2007	5/15/2008	105F06
Watson Lake	YC71114	ANNA F	792Donegal Dev.	5/15/2007	5/15/2008	105F06
Watson Lake	YC71113	ANNA	790Donegal Dev.	5/15/2007	5/15/2008	105F07
Watson Lake	YC71112	ANNA	789Donegal Dev.	5/15/2007	5/15/2008	105F07
Watson Lake	YC71111	ANNA	788Donegal Dev.	5/15/2007	5/15/2008	105F07
Watson Lake	YC71110	ANNA	787Donegal Dev.	5/15/2007	5/15/2008	105F07
Watson Lake	YC71109	ANNA	786Donegal Dev.	5/15/2007	5/15/2008	105F07
Watson Lake	YC71108	ANNA	784Donegal Dev.	5/15/2007	5/15/2008	105F07
Watson Lake	YC71107	ANNA	783Donegal Dev.	5/15/2007	5/15/2008	105F07
Watson Lake	YC71106	ANNA	782Donegal Dev.	5/15/2007	5/15/2008	105F07
Watson Lake	YC71105	ANNA	781Donegal Dev.	5/15/2007	5/15/2008	105F07
Watson Lake	YC71104	ANNA	780Donegal Dev.	5/15/2007	5/15/2008	105F07
Watson Lake	YC71103	ANNA	779Donegal Dev.	5/15/2007	5/15/2008	105F07
Watson Lake	YC71102	ANNA	778Donegal Dev.	5/15/2007	5/15/2008	105F07
Watson Lake	YC71101	ANNA	777Donegal Dev.	5/15/2007	5/15/2008	105F07
Watson Lake	YC71100	ANNA	776Donegal Dev.	5/15/2007	5/15/2008	105F07
Watson Lake	YC71099	ANNA	775Donegal Dev.	5/15/2007	5/15/2008	105F07
Watson Lake	YC71098	ANNA	774Donegal Dev.	5/15/2007	5/15/2008	105F07
Watson Lake	YC71097	ANNA	773Donegal Dev.	5/15/2007	5/15/2008	105F07
Watson Lake	YC71096	ANNA F	738Donegal Dev.	5/15/2007	5/15/2008	105F06
Watson Lake	YC71095	ANNA F	736Donegal Dev.	5/15/2007	5/15/2008	105F06
Watson Lake	YC71094	ANNA	735Donegal Dev.	5/15/2007	5/15/2008	105F06
Watson Lake	YC71093	ANNA F	734Donegal Dev.	5/15/2007	5/15/2008	105F06
Watson Lake	YC71092	ANNA	733Donegal Dev.	5/15/2007	5/15/2008	105F06
Watson Lake	YC71091	ANNA F	732Donegal Dev.	5/15/2007	5/15/2008	105F07
Watson Lake	YC71090	ANNA	731Donegal Dev.	5/15/2007	5/15/2008	105F07
Watson Lake	YC71089	ANNA	730Donegal Dev.	5/15/2007	5/15/2008	105F07
Watson Lake	YC71088	ANNA	729Donegal Dev.	5/15/2007	5/15/2008	105F07
Watson Lake	YC71087	ANNA	728Donegal Dev.	5/15/2007	5/15/2008	105F07
Watson Lake	YC71086	ANNA	727Donegal Dev.	5/15/2007	5/15/2008	105F07
Watson Lake	YC71085	ANNA	726Donegal Dev.	5/15/2007	5/15/2008	105F07
Watson Lake	YC71084	ANNA	725Donegal Dev.	5/15/2007	5/15/2008	105F07
Watson Lake	YC71083	ANNA	724Donegal Dev.	5/15/2007	5/15/2008	105F07
Watson Lake	YC71082	ANNA	723Donegal Dev.	5/15/2007	5/15/2008	105F07
Watson Lake	YC71081	ANNA F	676Donegal Dev.	5/15/2007	5/15/2008	105F07
Watson Lake	YC71080	ANNA F	675Donegal Dev.	5/15/2007	5/15/2008	105F07
Watson Lake	YC71079	ANNA F	674Donegal Dev.	5/15/2007	5/15/2008	105F07
Watson Lake	YC71078	ANNA	673Donegal Dev.	5/15/2007	5/15/2008	105F07
Watson Lake	YC71284	ANNA	993Donegal Dev.	5/15/2007	5/15/2008	105F07
Watson Lake	YC71283	ANNA	992Donegal Dev.	5/15/2007	5/15/2008	105F07
Watson Lake	YC71282	ANNA	991Donegal Dev.	5/15/2007	5/15/2008	105F07
Watson Lake	YC71281	ANNA	990Donegal Dev.	5/15/2007	5/15/2008	105F07

Quiet Lake Nickel Project, YT – Magnetic Survey, September 2007

Watson Lake	YC71280	ANNA	989Donegal Dev.	5/15/2007	5/15/2008	105F07
Watson Lake	YC71279	ANNA	988Donegal Dev.	5/15/2007	5/15/2008	105F07
Watson Lake	YC71278	ANNA	987Donegal Dev.	5/15/2007	5/15/2008	105F07
Watson Lake	YC71277	ANNA	986Donegal Dev.	5/15/2007	5/15/2008	105F07
Watson Lake	YC71276	ANNA	985Donegal Dev.	5/15/2007	5/15/2008	105F07
Watson Lake	YC71275	ANNA	984Donegal Dev.	5/15/2007	5/15/2008	105F07
Watson Lake	YC71274	ANNA	983Donegal Dev.	5/15/2007	5/15/2008	105F07
Watson Lake	YC71273	ANNA	982Donegal Dev.	5/15/2007	5/15/2008	105F02
Watson Lake	YC71272	ANNA	981Donegal Dev.	5/15/2007	5/15/2008	105F02
Watson Lake	YC71271	ANNA	980Donegal Dev.	5/15/2007	5/15/2008	105F02
Watson Lake	YC71270	ANNA	979Donegal Dev.	5/15/2007	5/15/2008	105F02
Watson Lake	YC71269	ANNA	978Donegal Dev.	5/15/2007	5/15/2008	105F02
Watson Lake	YC71268	ANNA	977Donegal Dev.	5/15/2007	5/15/2008	105F02
Watson Lake	YC71267	ANNA	976Donegal Dev.	5/15/2007	5/15/2008	105F02
Watson Lake	YC71266	ANNA	975Donegal Dev.	5/15/2007	5/15/2008	105F02
Watson Lake	YC71265	ANNA	974Donegal Dev.	5/15/2007	5/15/2008	105F02
Watson Lake	YC71264	ANNA	973Donegal Dev.	5/15/2007	5/15/2008	105F02
Watson Lake	YC71263	ANNA	972Donegal Dev.	5/15/2007	5/15/2008	105F02
Watson Lake	YC71262	ANNA	971Donegal Dev.	5/15/2007	5/15/2008	105F02
Watson Lake	YC71261	ANNA	970Donegal Dev.	5/15/2007	5/15/2008	105F07
Watson Lake	YC71260	ANNA	969Donegal Dev.	5/15/2007	5/15/2008	105F07
Watson Lake	YC71259	ANNA	968Donegal Dev.	5/15/2007	5/15/2008	105F07
Watson Lake	YC71258	ANNA	967Donegal Dev.	5/15/2007	5/15/2008	105F07
Watson Lake	YC71257	ANNA	966Donegal Dev.	5/15/2007	5/15/2008	105F07
Watson Lake	YC71256	ANNA	965Donegal Dev.	5/15/2007	5/15/2008	105F07
Watson Lake	YC71255	ANNA	964Donegal Dev.	5/15/2007	5/15/2008	105F07
Watson Lake	YC71254	ANNA	963Donegal Dev.	5/15/2007	5/15/2008	105F07
Watson Lake	YC71253	ANNA	962Donegal Dev.	5/15/2007	5/15/2008	105F07
Watson Lake	YC71252	ANNA	961Donegal Dev.	5/15/2007	5/15/2008	105F07
Watson Lake	YC71251	ANNA	960Donegal Dev.	5/15/2007	5/15/2008	105F07
Watson Lake	YC71250	ANNA	959Donegal Dev.	5/15/2007	5/15/2008	105F07
Watson Lake	YC71249	ANNA	958Donegal Dev.	5/15/2007	5/15/2008	105F07
Watson Lake	YC71248	ANNA	957Donegal Dev.	5/15/2007	5/15/2008	105F07
Watson Lake	YC71247	ANNA	956Donegal Dev.	5/15/2007	5/15/2008	105F07
Watson Lake	YC71246	ANNA	955Donegal Dev.	5/15/2007	5/15/2008	105F07
Watson Lake	YC71245	ANNA	954Donegal Dev.	5/15/2007	5/15/2008	105F07
Watson Lake	YC71244	ANNA	953Donegal Dev.	5/15/2007	5/15/2008	105F07
Watson Lake	YC71243	ANNA	952Donegal Dev.	5/15/2007	5/15/2008	105F07
Watson Lake	YC71242	ANNA	951Donegal Dev.	5/15/2007	5/15/2008	105F07
Watson Lake	YC71241	ANNA	950Donegal Dev.	5/15/2007	5/15/2008	105F07
Watson Lake	YC71240	ANNA	949Donegal Dev.	5/15/2007	5/15/2008	105F07
Watson Lake	YC71239	ANNA	948Donegal Dev.	5/15/2007	5/15/2008	105F07
Watson Lake	YC71238	ANNA	947Donegal Dev.	5/15/2007	5/15/2008	105F07
Watson Lake	YC71237	ANNA	946Donegal Dev.	5/15/2007	5/15/2008	105F07

Quiet Lake Nickel Project, YT – Magnetic Survey, September 2007

Watson Lake	YC71236	ANNA	945Donegal Dev.	5/15/2007	5/15/2008	105F07
Watson Lake	YC71235	ANNA	944Donegal Dev.	5/15/2007	5/15/2008	105F07
Watson Lake	YC71234	ANNA	943Donegal Dev.	5/15/2007	5/15/2008	105F07
Watson Lake	YC71233	ANNA	942Donegal Dev.	5/15/2007	5/15/2008	105F07
Watson Lake	YC71232	ANNA	941Donegal Dev.	5/15/2007	5/15/2008	105F07
Watson Lake	YC71231	ANNA	940Donegal Dev.	5/15/2007	5/15/2008	105F02
Watson Lake	YC71230	ANNA	939Donegal Dev.	5/15/2007	5/15/2008	105F02
Watson Lake	YC71229	ANNA	938Donegal Dev.	5/15/2007	5/15/2008	105F02
Watson Lake	YC71228	ANNA	937Donegal Dev.	5/15/2007	5/15/2008	105F02
Watson Lake	YC71227	ANNA	936Donegal Dev.	5/15/2007	5/15/2008	105F02
Watson Lake	YC71226	ANNA	935Donegal Dev.	5/15/2007	5/15/2008	105F02
Watson Lake	YC71225	ANNA	934Donegal Dev.	5/15/2007	5/15/2008	105F02
Watson Lake	YC71224	ANNA	933Donegal Dev.	5/15/2007	5/15/2008	105F02
Watson Lake	YC71223	ANNA	932Donegal Dev.	5/15/2007	5/15/2008	105F02
Watson Lake	YC71222	ANNA	931Donegal Dev.	5/15/2007	5/15/2008	105F02
Watson Lake	YC71221	ANNA	930Donegal Dev.	5/15/2007	5/15/2008	105F07
Watson Lake	YC71220	ANNA	929Donegal Dev.	5/15/2007	5/15/2008	105F07
Watson Lake	YC71219	ANNA	928Donegal Dev.	5/15/2007	5/15/2008	105F07
Watson Lake	YC71218	ANNA	927Donegal Dev.	5/15/2007	5/15/2008	105F07
Watson Lake	YC71217	ANNA	926Donegal Dev.	5/15/2007	5/15/2008	105F07
Watson Lake	YC71216	ANNA	925Donegal Dev.	5/15/2007	5/15/2008	105F07
Watson Lake	YC71215	ANNA	924Donegal Dev.	5/15/2007	5/15/2008	105F07
Watson Lake	YC71214	ANNA	923Donegal Dev.	5/15/2007	5/15/2008	105F07
Watson Lake	YC71213	ANNA	922Donegal Dev.	5/15/2007	5/15/2008	105F07
Watson Lake	YC71212	ANNA	921Donegal Dev.	5/15/2007	5/15/2008	105F07
Watson Lake	YC71425	ANNA	1134Donegal Dev.	5/15/2007	5/15/2008	105F02
Watson Lake	YC71424	ANNA	1133Donegal Dev.	5/15/2007	5/15/2008	105F02
Watson Lake	YC71423	ANNA	1132Donegal Dev.	5/15/2007	5/15/2008	105F02
Watson Lake	YC71422	ANNA	1131Donegal Dev.	5/15/2007	5/15/2008	105F02
Watson Lake	YC71421	ANNA	1130Donegal Dev.	5/15/2007	5/15/2008	105F02
Watson Lake	YC71420	ANNA	1129Donegal Dev.	5/15/2007	5/15/2008	105F02
Watson Lake	YC71419	ANNA	1128Donegal Dev.	5/15/2007	5/15/2008	105F07
Watson Lake	YC71418	ANNA	1127Donegal Dev.	5/15/2007	5/15/2008	105F07
Watson Lake	YC71417	ANNA	1126Donegal Dev.	5/15/2007	5/15/2008	105F07
Watson Lake	YC71416	ANNA	1125Donegal Dev.	5/15/2007	5/15/2008	105F07
Watson Lake	YC71415	ANNA	1124Donegal Dev.	5/15/2007	5/15/2008	105F07
Watson Lake	YC71414	ANNA	1123Donegal Dev.	5/15/2007	5/15/2008	105F07
Watson Lake	YC71413	ANNA	1122Donegal Dev.	5/15/2007	5/15/2008	105F07
Watson Lake	YC71412	ANNA	1121Donegal Dev.	5/15/2007	5/15/2008	105F07
Watson Lake	YC71411	ANNA	1120Donegal Dev.	5/15/2007	5/15/2008	105F07
Watson Lake	YC71410	ANNA	1119Donegal Dev.	5/15/2007	5/15/2008	105F07
Watson Lake	YC71409	ANNA	1118Donegal Dev.	5/15/2007	5/15/2008	105F07
Watson Lake	YC71408	ANNA	1117Donegal Dev.	5/15/2007	5/15/2008	105F07
Watson Lake	YC71407	ANNA	1116Donegal Dev.	5/15/2007	5/15/2008	105F07

Quiet Lake Nickel Project, YT – Magnetic Survey, September 2007

Watson Lake	YC71406	ANNA	1115Donegal Dev.	5/15/2007	5/15/2008	105F07
Watson Lake	YC71405	ANNA	1114Donegal Dev.	5/15/2007	5/15/2008	105F07
Watson Lake	YC71404	ANNA	1113Donegal Dev.	5/15/2007	5/15/2008	105F07
Watson Lake	YC71403	ANNA	1112Donegal Dev.	5/15/2007	5/15/2008	105F07
Watson Lake	YC71402	ANNA	1111Donegal Dev.	5/15/2007	5/15/2008	105F07
Watson Lake	YC71401	ANNA	1110Donegal Dev.	5/15/2007	5/15/2008	105F07
Watson Lake	YC71400	ANNA	1109Donegal Dev.	5/15/2007	5/15/2008	105F07
Watson Lake	YC71399	ANNA	1108Donegal Dev.	5/15/2007	5/15/2008	105F02
Watson Lake	YC71398	ANNA	1107Donegal Dev.	5/15/2007	5/15/2008	105F02
Watson Lake	YC71397	ANNA	1106Donegal Dev.	5/15/2007	5/15/2008	105F02
Watson Lake	YC71396	ANNA	1105Donegal Dev.	5/15/2007	5/15/2008	105F02
Watson Lake	YC71395	ANNA	1104Donegal Dev.	5/15/2007	5/15/2008	105F02
Watson Lake	YC71394	ANNA	1103Donegal Dev.	5/15/2007	5/15/2008	105F02
Watson Lake	YC71393	ANNA	1102Donegal Dev.	5/15/2007	5/15/2008	105F02
Watson Lake	YC71392	ANNA	1101Donegal Dev.	5/15/2007	5/15/2008	105F02
Watson Lake	YC71391	ANNA	1100Donegal Dev.	5/15/2007	5/15/2008	105F02
Watson Lake	YC71390	ANNA	1099Donegal Dev.	5/15/2007	5/15/2008	105F02
Watson Lake	YC71389	ANNA	1098Donegal Dev.	5/15/2007	5/15/2008	105F02
Watson Lake	YC71388	ANNA	1097Donegal Dev.	5/15/2007	5/15/2008	105F02
Watson Lake	YC71387	ANNA	1096Donegal Dev.	5/15/2007	5/15/2008	105F02
Watson Lake	YC71386	ANNA	1095Donegal Dev.	5/15/2007	5/15/2008	105F02
Watson Lake	YC71385	ANNA	1094Donegal Dev.	5/15/2007	5/15/2008	105F02
Watson Lake	YC71384	ANNA	1093Donegal Dev.	5/15/2007	5/15/2008	105F02
Watson Lake	YC71383	ANNA	1092Donegal Dev.	5/15/2007	5/15/2008	105F02
Watson Lake	YC71382	ANNA	1091Donegal Dev.	5/15/2007	5/15/2008	105F02
Watson Lake	YC71381	ANNA	1090Donegal Dev.	5/15/2007	5/15/2008	105F07
Watson Lake	YC71380	ANNA	1089Donegal Dev.	5/15/2007	5/15/2008	105F07
Watson Lake	YC71379	ANNA	1088Donegal Dev.	5/15/2007	5/15/2008	105F07
Watson Lake	YC71378	ANNA	1087Donegal Dev.	5/15/2007	5/15/2008	105F07
Watson Lake	YC71377	ANNA	1086Donegal Dev.	5/15/2007	5/15/2008	105F07
Watson Lake	YC71376	ANNA	1085Donegal Dev.	5/15/2007	5/15/2008	105F07
Watson Lake	YC71375	ANNA	1084Donegal Dev.	5/15/2007	5/15/2008	105F07
Watson Lake	YC71374	ANNA	1083Donegal Dev.	5/15/2007	5/15/2008	105F07
Watson Lake	YC71373	ANNA	1082Donegal Dev.	5/15/2007	5/15/2008	105F07
Watson Lake	YC71372	ANNA	1081Donegal Dev.	5/15/2007	5/15/2008	105F07
Watson Lake	YC71371	ANNA	1080Donegal Dev.	5/15/2007	5/15/2008	105F07
Watson Lake	YC71370	ANNA	1079Donegal Dev.	5/15/2007	5/15/2008	105F07
Watson Lake	YC71369	ANNA	1078Donegal Dev.	5/15/2007	5/15/2008	105F07
Watson Lake	YC71368	ANNA	1077Donegal Dev.	5/15/2007	5/15/2008	105F07
Watson Lake	YC71367	ANNA	1076Donegal Dev.	5/15/2007	5/15/2008	105F07
Watson Lake	YC71366	ANNA	1075Donegal Dev.	5/15/2007	5/15/2008	105F07
Watson Lake	YC71365	ANNA	1074Donegal Dev.	5/15/2007	5/15/2008	105F07
Watson Lake	YC71364	ANNA	1073Donegal Dev.	5/15/2007	5/15/2008	105F07
Watson Lake	YC71363	ANNA	1072Donegal Dev.	5/15/2007	5/15/2008	105F07

Quiet Lake Nickel Project, YT – Magnetic Survey, September 2007

Watson Lake	YC71362	ANNA	1071Donegal Dev.	5/15/2007	5/15/2008	105F07
Watson Lake	YC71361	ANNA	1070Donegal Dev.	5/15/2007	5/15/2008	105F07
Watson Lake	YC71360	ANNA	1069Donegal Dev.	5/15/2007	5/15/2008	105F07
Watson Lake	YC71359	ANNA F	1068Donegal Dev.	5/15/2007	5/15/2008	105F07
Watson Lake	YC71358	ANNA F	1067Donegal Dev.	5/15/2007	5/15/2008	105F07
Watson Lake	YC71357	ANNA	1066Donegal Dev.	5/15/2007	5/15/2008	105F02
Watson Lake	YC71356	ANNA	1065Donegal Dev.	5/15/2007	5/15/2008	105F02
Watson Lake	YC71355	ANNA	1064Donegal Dev.	5/15/2007	5/15/2008	105F02
Watson Lake	YC71354	ANNA	1063Donegal Dev.	5/15/2007	5/15/2008	105F02
Watson Lake	YC71353	ANNA	1062Donegal Dev.	5/15/2007	5/15/2008	105F02
Watson Lake	YC71562	ANNA	1273Donegal Dev.	5/15/2007	5/15/2008	105F07
Watson Lake	YC71561	ANNA	1272Donegal Dev.	5/15/2007	5/15/2008	105F07
Watson Lake	YC71560	ANNA	1271Donegal Dev.	5/15/2007	5/15/2008	105F07
Watson Lake	YC71559	ANNA	1270Donegal Dev.	5/15/2007	5/15/2008	105F07
Watson Lake	YC71558	ANNA	1269Donegal Dev.	5/15/2007	5/15/2008	105F07
Watson Lake	YC71557	ANNA	1268Donegal Dev.	5/15/2007	5/15/2008	105F07
Watson Lake	YC71556	ANNA F	1267Donegal Dev.	5/15/2007	5/15/2008	105F07
Watson Lake	YC71555	ANNA F	1266Donegal Dev.	5/15/2007	5/15/2008	105F07
Watson Lake	YC71554	ANNA F	1265Donegal Dev.	5/15/2007	5/15/2008	105F07
Watson Lake	YC71553	ANNA F	1263Donegal Dev.	5/15/2007	5/15/2008	105F07
Watson Lake	YC71552	ANNA	1262Donegal Dev.	5/15/2007	5/15/2008	105F07
Watson Lake	YC71551	ANNA F	1261Donegal Dev.	5/15/2007	5/15/2008	105F07
Watson Lake	YC71550	ANNA	1260Donegal Dev.	5/15/2007	5/15/2008	105F02
Watson Lake	YC71549	ANNA	1259Donegal Dev.	5/15/2007	5/15/2008	105F02
Watson Lake	YC71548	ANNA	1258Donegal Dev.	5/15/2007	5/15/2008	105F02
Watson Lake	YC71547	ANNA	1257Donegal Dev.	5/15/2007	5/15/2008	105F02
Watson Lake	YC71546	ANNA	1256Donegal Dev.	5/15/2007	5/15/2008	105F02
Watson Lake	YC71545	ANNA	1255Donegal Dev.	5/15/2007	5/15/2008	105F02
Watson Lake	YC71544	ANNA	1254Donegal Dev.	5/15/2007	5/15/2008	105F02
Watson Lake	YC71543	ANNA	1253Donegal Dev.	5/15/2007	5/15/2008	105F02
Watson Lake	YC71542	ANNA	1252Donegal Dev.	5/15/2007	5/15/2008	105F02
Watson Lake	YC71541	ANNA	1251Donegal Dev.	5/15/2007	5/15/2008	105F02
Watson Lake	YC71540	ANNA	1250Donegal Dev.	5/15/2007	5/15/2008	105F02
Watson Lake	YC71539	ANNA	1249Donegal Dev.	5/15/2007	5/15/2008	105F02
Watson Lake	YC71538	ANNA	1248Donegal Dev.	5/15/2007	5/15/2008	105F02
Watson Lake	YC71537	ANNA	1247Donegal Dev.	5/15/2007	5/15/2008	105F02
Watson Lake	YC71536	ANNA	1246Donegal Dev.	5/15/2007	5/15/2008	105F02
Watson Lake	YC71535	ANNA	1245Donegal Dev.	5/15/2007	5/15/2008	105F02
Watson Lake	YC71534	ANNA	1244Donegal Dev.	5/15/2007	5/15/2008	105F02
Watson Lake	YC71533	ANNA	1243Donegal Dev.	5/15/2007	5/15/2008	105F02
Watson Lake	YC71532	ANNA	1242Donegal Dev.	5/15/2007	5/15/2008	105F07
Watson Lake	YC71531	ANNA	1241Donegal Dev.	5/15/2007	5/15/2008	105F07
Watson Lake	YC71530	ANNA	1240Donegal Dev.	5/15/2007	5/15/2008	105F07
Watson Lake	YC71529	ANNA	1239Donegal Dev.	5/15/2007	5/15/2008	105F07

Quiet Lake Nickel Project, YT – Magnetic Survey, September 2007

Watson Lake	YC71528	ANNA	1238Donegal Dev.	5/15/2007	5/15/2008	105F07
Watson Lake	YC71527	ANNA	1237Donegal Dev.	5/15/2007	5/15/2008	105F07
Watson Lake	YC71526	ANNA	1236Donegal Dev.	5/15/2007	5/15/2008	105F07
Watson Lake	YC71525	ANNA	1234Donegal Dev.	5/15/2007	5/15/2008	105F07
Watson Lake	YC71524	ANNA	1233Donegal Dev.	5/15/2007	5/15/2008	105F07
Watson Lake	YC71523	ANNA	1232Donegal Dev.	5/15/2007	5/15/2008	105F07
Watson Lake	YC71522	ANNA	1231Donegal Dev.	5/15/2007	5/15/2008	105F07
Watson Lake	YC71521	ANNA	1230Donegal Dev.	5/15/2007	5/15/2008	105F07
Watson Lake	YC71520	ANNA	1229Donegal Dev.	5/15/2007	5/15/2008	105F07
Watson Lake	YC71519	ANNA	1228Donegal Dev.	5/15/2007	5/15/2008	105F02
Watson Lake	YC71518	ANNA	1227Donegal Dev.	5/15/2007	5/15/2008	105F02
Watson Lake	YC71517	ANNA	1226Donegal Dev.	5/15/2007	5/15/2008	105F02
Watson Lake	YC71516	ANNA	1225Donegal Dev.	5/15/2007	5/15/2008	105F02
Watson Lake	YC71515	ANNA	1224Donegal Dev.	5/15/2007	5/15/2008	105F02
Watson Lake	YC71514	ANNA	1223Donegal Dev.	5/15/2007	5/15/2008	105F02
Watson Lake	YC71513	ANNA	1222Donegal Dev.	5/15/2007	5/15/2008	105F02
Watson Lake	YC71512	ANNA	1221Donegal Dev.	5/15/2007	5/15/2008	105F02
Watson Lake	YC71511	ANNA	1220Donegal Dev.	5/15/2007	5/15/2008	105F02
Watson Lake	YC71510	ANNA	1219Donegal Dev.	5/15/2007	5/15/2008	105F02
Watson Lake	YC71509	ANNA	1218Donegal Dev.	5/15/2007	5/15/2008	105F02
Watson Lake	YC71508	ANNA	1217Donegal Dev.	5/15/2007	5/15/2008	105F02
Watson Lake	YC71507	ANNA	1216Donegal Dev.	5/15/2007	5/15/2008	105F02
Watson Lake	YC71506	ANNA	1215Donegal Dev.	5/15/2007	5/15/2008	105F02
Watson Lake	YC71505	ANNA	1214Donegal Dev.	5/15/2007	5/15/2008	105F02
Watson Lake	YC71504	ANNA	1213Donegal Dev.	5/15/2007	5/15/2008	105F02
Watson Lake	YC71503	ANNA	1212Donegal Dev.	5/15/2007	5/15/2008	105F02
Watson Lake	YC71502	ANNA	1211Donegal Dev.	5/15/2007	5/15/2008	105F02
Watson Lake	YC71501	ANNA	1210Donegal Dev.	5/15/2007	5/15/2008	105F02
Watson Lake	YC71500	ANNA	1209Donegal Dev.	5/15/2007	5/15/2008	105F02
Watson Lake	YC71499	ANNA	1208Donegal Dev.	5/15/2007	5/15/2008	105F02
Watson Lake	YC71498	ANNA	1207Donegal Dev.	5/15/2007	5/15/2008	105F02
Watson Lake	YC71497	ANNA	1206Donegal Dev.	5/15/2007	5/15/2008	105F02
Watson Lake	YC71496	ANNA	1205Donegal Dev.	5/15/2007	5/15/2008	105F02
Watson Lake	YC71495	ANNA	1204Donegal Dev.	5/15/2007	5/15/2008	105F07
Watson Lake	YC71494	ANNA	1203Donegal Dev.	5/15/2007	5/15/2008	105F07
Watson Lake	YC71493	ANNA	1202Donegal Dev.	5/15/2007	5/15/2008	105F07
Watson Lake	YC71492	ANNA	1201Donegal Dev.	5/15/2007	5/15/2008	105F07
Watson Lake	YC71491	ANNA	1200Donegal Dev.	5/15/2007	5/15/2008	105F07
Watson Lake	YC71490	ANNA	1199Donegal Dev.	5/15/2007	5/15/2008	105F07
Watson Lake	YC71584	ANNA F	1307Donegal Dev.	5/15/2007	5/15/2008	105F07
Watson Lake	YC71583	ANNA F	1306Donegal Dev.	5/15/2007	5/15/2008	105F07
Watson Lake	YC71582	ANNA F	1297Donegal Dev.	5/15/2007	5/15/2008	105F07
Watson Lake	YC71581	ANNA	1292Donegal Dev.	5/15/2007	5/15/2008	105F02
Watson Lake	YC71580	ANNA	1291Donegal Dev.	5/15/2007	5/15/2008	105F02

Quiet Lake Nickel Project, YT – Magnetic Survey, September 2007

Watson Lake	YC71579	ANNA	1290Donegal Dev.	5/15/2007	5/15/2008	105F02
Watson Lake	YC71578	ANNA	1289Donegal Dev.	5/15/2007	5/15/2008	105F02
Watson Lake	YC71577	ANNA	1288Donegal Dev.	5/15/2007	5/15/2008	105F02
Watson Lake	YC71576	ANNA	1287Donegal Dev.	5/15/2007	5/15/2008	105F02
Watson Lake	YC71575	ANNA	1286Donegal Dev.	5/15/2007	5/15/2008	105F02
Watson Lake	YC71574	ANNA	1285Donegal Dev.	5/15/2007	5/15/2008	105F02
Watson Lake	YC71573	ANNA	1284Donegal Dev.	5/15/2007	5/15/2008	105F02
Watson Lake	YC71572	ANNA	1283Donegal Dev.	5/15/2007	5/15/2008	105F02
Watson Lake	YC71571	ANNA	1282Donegal Dev.	5/15/2007	5/15/2008	105F02
Watson Lake	YC71570	ANNA	1281Donegal Dev.	5/15/2007	5/15/2008	105F02
Watson Lake	YC71569	ANNA	1280Donegal Dev.	5/15/2007	5/15/2008	105F02
Watson Lake	YC71568	ANNA	1279Donegal Dev.	5/15/2007	5/15/2008	105F02
Watson Lake	YC71567	ANNA	1278Donegal Dev.	5/15/2007	5/15/2008	105F02
Watson Lake	YC71566	ANNA	1277Donegal Dev.	5/15/2007	5/15/2008	105F02
Watson Lake	YC71565	ANNA	1276Donegal Dev.	5/15/2007	5/15/2008	105F02
Watson Lake	YC71564	ANNA	1275Donegal Dev.	5/15/2007	5/15/2008	105F02
Watson Lake	YC71563	ANNA	1274Donegal Dev.	5/15/2007	5/15/2008	105F07
Watson Lake	YC71489	ANNA	1198Donegal Dev.	5/15/2007	5/15/2008	105F07
Watson Lake	YC71488	ANNA	1197Donegal Dev.	5/15/2007	5/15/2008	105F07
Watson Lake	YC71487	ANNA	1196Donegal Dev.	5/15/2007	5/15/2008	105F07
Watson Lake	YC71486	ANNA	1195Donegal Dev.	5/15/2007	5/15/2008	105F07
Watson Lake	YC71485	ANNA	1194Donegal Dev.	5/15/2007	5/15/2008	105F07
Watson Lake	YC71484	ANNA	1193Donegal Dev.	5/15/2007	5/15/2008	105F07
Watson Lake	YC71483	ANNA	1192Donegal Dev.	5/15/2007	5/15/2008	105F07
Watson Lake	YC71482	ANNA	1191Donegal Dev.	5/15/2007	5/15/2008	105F07
Watson Lake	YC71481	ANNA	1190Donegal Dev.	5/15/2007	5/15/2008	105F07
Watson Lake	YC71480	ANNA	1189Donegal Dev.	5/15/2007	5/15/2008	105F07
Watson Lake	YC71479	ANNA	1188Donegal Dev.	5/15/2007	5/15/2008	105F02
Watson Lake	YC71478	ANNA	1187Donegal Dev.	5/15/2007	5/15/2008	105F02
Watson Lake	YC71477	ANNA	1186Donegal Dev.	5/15/2007	5/15/2008	105F02
Watson Lake	YC71476	ANNA	1185Donegal Dev.	5/15/2007	5/15/2008	105F02
Watson Lake	YC71475	ANNA	1184Donegal Dev.	5/15/2007	5/15/2008	105F02
Watson Lake	YC71474	ANNA	1183Donegal Dev.	5/15/2007	5/15/2008	105F02
Watson Lake	YC71473	ANNA	1182Donegal Dev.	5/15/2007	5/15/2008	105F02
Watson Lake	YC71472	ANNA	1181Donegal Dev.	5/15/2007	5/15/2008	105F02
Watson Lake	YC71471	ANNA	1180Donegal Dev.	5/15/2007	5/15/2008	105F02
Watson Lake	YC71470	ANNA	1179Donegal Dev.	5/15/2007	5/15/2008	105F02
Watson Lake	YC71469	ANNA	1178Donegal Dev.	5/15/2007	5/15/2008	105F02
Watson Lake	YC71468	ANNA	1177Donegal Dev.	5/15/2007	5/15/2008	105F02
Watson Lake	YC71467	ANNA	1176Donegal Dev.	5/15/2007	5/15/2008	105F02
Watson Lake	YC71466	ANNA	1175Donegal Dev.	5/15/2007	5/15/2008	105F02
Watson Lake	YC71465	ANNA	1174Donegal Dev.	5/15/2007	5/15/2008	105F02
Watson Lake	YC71464	ANNA	1173Donegal Dev.	5/15/2007	5/15/2008	105F02
Watson Lake	YC71463	ANNA	1172Donegal Dev.	5/15/2007	5/15/2008	105F02

Quiet Lake Nickel Project, YT – Magnetic Survey, September 2007

Watson Lake	YC71462	ANNA	1171Donegal Dev.	5/15/2007	5/15/2008	105F02
Watson Lake	YC71461	ANNA	1170Donegal Dev.	5/15/2007	5/15/2008	105F02
Watson Lake	YC71460	ANNA	1169Donegal Dev.	5/15/2007	5/15/2008	105F02
Watson Lake	YC71459	ANNA	1168Donegal Dev.	5/15/2007	5/15/2008	105F02
Watson Lake	YC71458	ANNA	1167Donegal Dev.	5/15/2007	5/15/2008	105F02
Watson Lake	YC71457	ANNA	1166Donegal Dev.	5/15/2007	5/15/2008	105F07
Watson Lake	YC71456	ANNA	1165Donegal Dev.	5/15/2007	5/15/2008	105F07
Watson Lake	YC71455	ANNA	1164Donegal Dev.	5/15/2007	5/15/2008	105F07
Watson Lake	YC71454	ANNA	1163Donegal Dev.	5/15/2007	5/15/2008	105F07
Watson Lake	YC71453	ANNA	1162Donegal Dev.	5/15/2007	5/15/2008	105F07
Watson Lake	YC71452	ANNA	1161Donegal Dev.	5/15/2007	5/15/2008	105F07
Watson Lake	YC71451	ANNA	1160Donegal Dev.	5/15/2007	5/15/2008	105F07
Watson Lake	YC71450	ANNA	1159Donegal Dev.	5/15/2007	5/15/2008	105F07
Watson Lake	YC71449	ANNA	1158Donegal Dev.	5/15/2007	5/15/2008	105F07
Watson Lake	YC71448	ANNA	1157Donegal Dev.	5/15/2007	5/15/2008	105F07
Watson Lake	YC71447	ANNA	1156Donegal Dev.	5/15/2007	5/15/2008	105F07
Watson Lake	YC71446	ANNA	1155Donegal Dev.	5/15/2007	5/15/2008	105F07
Watson Lake	YC71445	ANNA	1154Donegal Dev.	5/15/2007	5/15/2008	105F07
Watson Lake	YC71444	ANNA	1153Donegal Dev.	5/15/2007	5/15/2008	105F07
Watson Lake	YC71443	ANNA	1152Donegal Dev.	5/15/2007	5/15/2008	105F07
Watson Lake	YC71442	ANNA	1151Donegal Dev.	5/15/2007	5/15/2008	105F07
Watson Lake	YC71441	ANNA	1150Donegal Dev.	5/15/2007	5/15/2008	105F07
Watson Lake	YC71440	ANNA	1149Donegal Dev.	5/15/2007	5/15/2008	105F07
Watson Lake	YC71439	ANNA	1148Donegal Dev.	5/15/2007	5/15/2008	105F02
Watson Lake	YC71438	ANNA	1147Donegal Dev.	5/15/2007	5/15/2008	105F02
Watson Lake	YC71437	ANNA	1146Donegal Dev.	5/15/2007	5/15/2008	105F02
Watson Lake	YC71436	ANNA	1145Donegal Dev.	5/15/2007	5/15/2008	105F02
Watson Lake	YC71435	ANNA	1144Donegal Dev.	5/15/2007	5/15/2008	105F02
Watson Lake	YC71434	ANNA	1143Donegal Dev.	5/15/2007	5/15/2008	105F02
Watson Lake	YC71433	ANNA	1142Donegal Dev.	5/15/2007	5/15/2008	105F02
Watson Lake	YC71432	ANNA	1141Donegal Dev.	5/15/2007	5/15/2008	105F02
Watson Lake	YC71431	ANNA	1140Donegal Dev.	5/15/2007	5/15/2008	105F02
Watson Lake	YC71430	ANNA	1139Donegal Dev.	5/15/2007	5/15/2008	105F02
Watson Lake	YC71429	ANNA	1138Donegal Dev.	5/15/2007	5/15/2008	105F02
Watson Lake	YC71428	ANNA	1137Donegal Dev.	5/15/2007	5/15/2008	105F02
Watson Lake	YC71427	ANNA	1136Donegal Dev.	5/15/2007	5/15/2008	105F02
Watson Lake	YC71426	ANNA	1135Donegal Dev.	5/15/2007	5/15/2008	105F02
Watson Lake	YC71352	ANNA	1061Donegal Dev.	5/15/2007	5/15/2008	105F02
Watson Lake	YC71351	ANNA	1060Donegal Dev.	5/15/2007	5/15/2008	105F02
Watson Lake	YC71350	ANNA	1059Donegal Dev.	5/15/2007	5/15/2008	105F02
Watson Lake	YC71349	ANNA	1058Donegal Dev.	5/15/2007	5/15/2008	105F02
Watson Lake	YC71348	ANNA	1057Donegal Dev.	5/15/2007	5/15/2008	105F02
Watson Lake	YC71347	ANNA	1056Donegal Dev.	5/15/2007	5/15/2008	105F02
Watson Lake	YC71346	ANNA	1055Donegal Dev.	5/15/2007	5/15/2008	105F02

Quiet Lake Nickel Project, YT – Magnetic Survey, September 2007

Watson Lake	YC71345	ANNA	1054Donegal Dev.	5/15/2007	5/15/2008	105F02
Watson Lake	YC71344	ANNA	1053Donegal Dev.	5/15/2007	5/15/2008	105F02
Watson Lake	YC71343	ANNA	1052Donegal Dev.	5/15/2007	5/15/2008	105F02
Watson Lake	YC71342	ANNA	1051Donegal Dev.	5/15/2007	5/15/2008	105F02
Watson Lake	YC71341	ANNA	1050Donegal Dev.	5/15/2007	5/15/2008	105F07
Watson Lake	YC71340	ANNA	1049Donegal Dev.	5/15/2007	5/15/2008	105F07
Watson Lake	YC71339	ANNA	1048Donegal Dev.	5/15/2007	5/15/2008	105F07
Watson Lake	YC71338	ANNA	1047Donegal Dev.	5/15/2007	5/15/2008	105F07
Watson Lake	YC71337	ANNA	1046Donegal Dev.	5/15/2007	5/15/2008	105F07
Watson Lake	YC71336	ANNA	1045Donegal Dev.	5/15/2007	5/15/2008	105F07
Watson Lake	YC71335	ANNA	1044Donegal Dev.	5/15/2007	5/15/2008	105F07
Watson Lake	YC71334	ANNA	1043Donegal Dev.	5/15/2007	5/15/2008	105F07
Watson Lake	YC71333	ANNA	1042Donegal Dev.	5/15/2007	5/15/2008	105F07
Watson Lake	YC71332	ANNA	1041Donegal Dev.	5/15/2007	5/15/2008	105F07
Watson Lake	YC71331	ANNA	1040Donegal Dev.	5/15/2007	5/15/2008	105F07
Watson Lake	YC71330	ANNA	1039Donegal Dev.	5/15/2007	5/15/2008	105F07
Watson Lake	YC71329	ANNA	1038Donegal Dev.	5/15/2007	5/15/2008	105F07
Watson Lake	YC71328	ANNA	1037Donegal Dev.	5/15/2007	5/15/2008	105F07
Watson Lake	YC71327	ANNA	1036Donegal Dev.	5/15/2007	5/15/2008	105F07
Watson Lake	YC71326	ANNA	1035Donegal Dev.	5/15/2007	5/15/2008	105F07
Watson Lake	YC71325	ANNA	1034Donegal Dev.	5/15/2007	5/15/2008	105F07
Watson Lake	YC71324	ANNA	1033Donegal Dev.	5/15/2007	5/15/2008	105F07
Watson Lake	YC71319	ANNA	1028Donegal Dev.	5/15/2007	5/15/2008	105F07
Watson Lake	YC71318	ANNA	1027Donegal Dev.	5/15/2007	5/15/2008	105F07
Watson Lake	YC71317	ANNA	1026Donegal Dev.	5/15/2007	5/15/2008	105F07
Watson Lake	YC71316	ANNA F	1025Donegal Dev.	5/15/2007	5/15/2008	105F07
Watson Lake	YC71315	ANNA	1024Donegal Dev.	5/15/2007	5/15/2008	105F02
Watson Lake	YC71314	ANNA	1023Donegal Dev.	5/15/2007	5/15/2008	105F02
Watson Lake	YC71313	ANNA	1022Donegal Dev.	5/15/2007	5/15/2008	105F02
Watson Lake	YC71312	ANNA	1021Donegal Dev.	5/15/2007	5/15/2008	105F02
Watson Lake	YC71311	ANNA	1020Donegal Dev.	5/15/2007	5/15/2008	105F02
Watson Lake	YC71310	ANNA	1019Donegal Dev.	5/15/2007	5/15/2008	105F02
Watson Lake	YC71309	ANNA	1018Donegal Dev.	5/15/2007	5/15/2008	105F02
Watson Lake	YC71308	ANNA	1017Donegal Dev.	5/15/2007	5/15/2008	105F02
Watson Lake	YC71307	ANNA	1016Donegal Dev.	5/15/2007	5/15/2008	105F02
Watson Lake	YC71306	ANNA	1015Donegal Dev.	5/15/2007	5/15/2008	105F02
Watson Lake	YC71305	ANNA	1014Donegal Dev.	5/15/2007	5/15/2008	105F02
Watson Lake	YC71304	ANNA	1013Donegal Dev.	5/15/2007	5/15/2008	105F02
Watson Lake	YC71303	ANNA	1012Donegal Dev.	5/15/2007	5/15/2008	105F02
Watson Lake	YC71302	ANNA	1011Donegal Dev.	5/15/2007	5/15/2008	105F02
Watson Lake	YC71301	ANNA	1010Donegal Dev.	5/15/2007	5/15/2008	105F07
Watson Lake	YC71300	ANNA	1009Donegal Dev.	5/15/2007	5/15/2008	105F07
Watson Lake	YC71299	ANNA	1008Donegal Dev.	5/15/2007	5/15/2008	105F07
Watson Lake	YC71298	ANNA	1007Donegal Dev.	5/15/2007	5/15/2008	105F07

Quiet Lake Nickel Project, YT – Magnetic Survey, September 2007

Watson Lake	YC71297	ANNA	1006Donegal Dev.	5/15/2007	5/15/2008	105F07
Watson Lake	YC71296	ANNA	1005Donegal Dev.	5/15/2007	5/15/2008	105F07
Watson Lake	YC71295	ANNA	1004Donegal Dev.	5/15/2007	5/15/2008	105F07
Watson Lake	YC71294	ANNA	1003Donegal Dev.	5/15/2007	5/15/2008	105F07
Watson Lake	YC71293	ANNA	1002Donegal Dev.	5/15/2007	5/15/2008	105F07
Watson Lake	YC71292	ANNA	1001Donegal Dev.	5/15/2007	5/15/2008	105F07
Watson Lake	YC71291	ANNA	1000Donegal Dev.	5/15/2007	5/15/2008	105F07
Watson Lake	YC71290	ANNA	999Donegal Dev.	5/15/2007	5/15/2008	105F07
Watson Lake	YC71289	ANNA	998Donegal Dev.	5/15/2007	5/15/2008	105F07
Watson Lake	YC71288	ANNA	997Donegal Dev.	5/15/2007	5/15/2008	105F07
Watson Lake	YC71287	ANNA	996Donegal Dev.	5/15/2007	5/15/2008	105F07
Watson Lake	YC71286	ANNA	995Donegal Dev.	5/15/2007	5/15/2008	105F07
Watson Lake	YC71285	ANNA	994Donegal Dev.	5/15/2007	5/15/2008	105F07
Watson Lake	YC71211	ANNA	920Donegal Dev.	5/15/2007	5/15/2008	105F07
Watson Lake	YC71210	ANNA	919Donegal Dev.	5/15/2007	5/15/2008	105F07
Watson Lake	YC71209	ANNA	918Donegal Dev.	5/15/2007	5/15/2008	105F07
Watson Lake	YC71208	ANNA	917Donegal Dev.	5/15/2007	5/15/2008	105F07
Watson Lake	YC71207	ANNA	916Donegal Dev.	5/15/2007	5/15/2008	105F07
Watson Lake	YC71206	ANNA	915Donegal Dev.	5/15/2007	5/15/2008	105F07
Watson Lake	YC71205	ANNA	914Donegal Dev.	5/15/2007	5/15/2008	105F07
Watson Lake	YC71204	ANNA	913Donegal Dev.	5/15/2007	5/15/2008	105F07
Watson Lake	YC71203	ANNA	912Donegal Dev.	5/15/2007	5/15/2008	105F07
Watson Lake	YC71202	ANNA	911Donegal Dev.	5/15/2007	5/15/2008	105F07
Watson Lake	YC71201	ANNA	910Donegal Dev.	5/15/2007	5/15/2008	105F07
Watson Lake	YC71200	ANNA	909Donegal Dev.	5/15/2007	5/15/2008	105F07
Watson Lake	YC71199	ANNA	908Donegal Dev.	5/15/2007	5/15/2008	105F07
Watson Lake	YC71198	ANNA	907Donegal Dev.	5/15/2007	5/15/2008	105F07
Watson Lake	YC71197	ANNA	906Donegal Dev.	5/15/2007	5/15/2008	105F07
Watson Lake	YC71196	ANNA	905Donegal Dev.	5/15/2007	5/15/2008	105F07
Watson Lake	YC71195	ANNA	904Donegal Dev.	5/15/2007	5/15/2008	105F07
Watson Lake	YC71194	ANNA	903Donegal Dev.	5/15/2007	5/15/2008	105F07
Watson Lake	YC71193	ANNA	902Donegal Dev.	5/15/2007	5/15/2008	105F07
Watson Lake	YC71192	ANNA	901Donegal Dev.	5/15/2007	5/15/2008	105F07
Watson Lake	YC71191	ANNA	900Donegal Dev.	5/15/2007	5/15/2008	105F07
Watson Lake	YC71190	ANNA	899Donegal Dev.	5/15/2007	5/15/2008	105F07
Watson Lake	YC71189	ANNA	898Donegal Dev.	5/15/2007	5/15/2008	105F03
Watson Lake	YC71188	ANNA	897Donegal Dev.	5/15/2007	5/15/2008	105F03
Watson Lake	YC71187	ANNA	896Donegal Dev.	5/15/2007	5/15/2008	105F03
Watson Lake	YC71186	ANNA	895Donegal Dev.	5/15/2007	5/15/2008	105F03
Watson Lake	YC71185	ANNA	894Donegal Dev.	5/15/2007	5/15/2008	105F03
Watson Lake	YC71184	ANNA	893Donegal Dev.	5/15/2007	5/15/2008	105F03
Watson Lake	YC71183	ANNA	892Donegal Dev.	5/15/2007	5/15/2008	105F02
Watson Lake	YC71182	ANNA	891Donegal Dev.	5/15/2007	5/15/2008	105F02
Watson Lake	YC71181	ANNA	890Donegal Dev.	5/15/2007	5/15/2008	105F07

Quiet Lake Nickel Project, YT – Magnetic Survey, September 2007

Watson Lake	YC71180	ANNA	889Donegal Dev.	5/15/2007	5/15/2008	105F07
Watson Lake	YC71179	ANNA	888Donegal Dev.	5/15/2007	5/15/2008	105F07
Watson Lake	YC71178	ANNA	887Donegal Dev.	5/15/2007	5/15/2008	105F07
Watson Lake	YC71177	ANNA	886Donegal Dev.	5/15/2007	5/15/2008	105F07
Watson Lake	YC71176	ANNA	885Donegal Dev.	5/15/2007	5/15/2008	105F07
Watson Lake	YC71175	ANNA	884Donegal Dev.	5/15/2007	5/15/2008	105F07
Watson Lake	YC71174	ANNA	883Donegal Dev.	5/15/2007	5/15/2008	105F07
Watson Lake	YC71173	ANNA	882Donegal Dev.	5/15/2007	5/15/2008	105F07
Watson Lake	YC71172	ANNA	881Donegal Dev.	5/15/2007	5/15/2008	105F07
Watson Lake	YC71171	ANNA	880Donegal Dev.	5/15/2007	5/15/2008	105F07
Watson Lake	YC71170	ANNA	879Donegal Dev.	5/15/2007	5/15/2008	105F07
Watson Lake	YC71169	ANNA	878Donegal Dev.	5/15/2007	5/15/2008	105F07
Watson Lake	YC71168	ANNA	877Donegal Dev.	5/15/2007	5/15/2008	105F07
Watson Lake	YC71167	ANNA	876Donegal Dev.	5/15/2007	5/15/2008	105F07
Watson Lake	YC71166	ANNA	875Donegal Dev.	5/15/2007	5/15/2008	105F07
Watson Lake	YC71165	ANNA	874Donegal Dev.	5/15/2007	5/15/2008	105F07
Watson Lake	YC71164	ANNA	873Donegal Dev.	5/15/2007	5/15/2008	105F07
Watson Lake	YC71163	ANNA	872Donegal Dev.	5/15/2007	5/15/2008	105F07
Watson Lake	YC71162	ANNA	871Donegal Dev.	5/15/2007	5/15/2008	105F07
Watson Lake	YC71161	ANNA	870Donegal Dev.	5/15/2007	5/15/2008	105F07
Watson Lake	YC71160	ANNA	869Donegal Dev.	5/15/2007	5/15/2008	105F07
Watson Lake	YC71159	ANNA	868Donegal Dev.	5/15/2007	5/15/2008	105F07
Watson Lake	YC71158	ANNA	867Donegal Dev.	5/15/2007	5/15/2008	105F07
Watson Lake	YC71157	ANNA	866Donegal Dev.	5/15/2007	5/15/2008	105F07
Watson Lake	YC71156	ANNA	865Donegal Dev.	5/15/2007	5/15/2008	105F07
Watson Lake	YC71155	ANNA	864Donegal Dev.	5/15/2007	5/15/2008	105F07
Watson Lake	YC71154	ANNA	863Donegal Dev.	5/15/2007	5/15/2008	105F07
Watson Lake	YC71153	ANNA	862Donegal Dev.	5/15/2007	5/15/2008	105F07
Watson Lake	YC71152	ANNA	861Donegal Dev.	5/15/2007	5/15/2008	105F07
Watson Lake	YC71151	ANNA	860Donegal Dev.	5/15/2007	5/15/2008	105F07
Watson Lake	YC71150	ANNA	859Donegal Dev.	5/15/2007	5/15/2008	105F07
Watson Lake	YC71149	ANNA	858Donegal Dev.	5/15/2007	5/15/2008	105F07
Watson Lake	YC71148	ANNA	857Donegal Dev.	5/15/2007	5/15/2008	105F07
Whitehorse	YC60421	ANNA	1Donegal Dev.	5/15/2007	5/15/2008	105F06
Whitehorse	YC60422	ANNA	2Donegal Dev.	5/15/2007	5/15/2008	105F06
Whitehorse	YC60423	ANNA	3Donegal Dev.	5/15/2007	5/15/2008	105F06
Whitehorse	YC60424	ANNA	4Donegal Dev.	5/15/2007	5/15/2008	105F06
Whitehorse	YC60425	ANNA	5Donegal Dev.	5/15/2007	5/15/2008	105F06
Whitehorse	YC60426	ANNA	6Donegal Dev.	5/15/2007	5/15/2008	105F06
Whitehorse	YC60427	ANNA	7Donegal Dev.	5/15/2007	5/15/2008	105F06
Whitehorse	YC60428	ANNA	8Donegal Dev.	5/15/2007	5/15/2008	105F06
Whitehorse	YC60429	ANNA	9Donegal Dev.	5/15/2007	5/15/2008	105F06
Whitehorse	YC60430	ANNA	10Donegal Dev.	5/15/2007	5/15/2008	105F06
Whitehorse	YC60431	ANNA	11Donegal Dev.	5/15/2007	5/15/2008	105F06

Quiet Lake Nickel Project, YT – Magnetic Survey, September 2007

Whitehorse	YC60432	ANNA	12Donegal Dev.	5/15/2007	5/15/2008	105F06
Whitehorse	YC60433	ANNA	13Donegal Dev.	5/15/2007	5/15/2008	105F06
Whitehorse	YC60434	ANNA	14Donegal Dev.	5/15/2007	5/15/2008	105F06
Whitehorse	YC60435	ANNA	15Donegal Dev.	5/15/2007	5/15/2008	105F06
Whitehorse	YC60436	ANNA	16Donegal Dev.	5/15/2007	5/15/2008	105F06
Whitehorse	YC60437	ANNA	17Donegal Dev.	5/15/2007	5/15/2008	105F06
Whitehorse	YC60438	ANNA	18Donegal Dev.	5/15/2007	5/15/2008	105F06
Whitehorse	YC60439	ANNA	19Donegal Dev.	5/15/2007	5/15/2008	105F06
Whitehorse	YC60440	ANNA	20Donegal Dev.	5/15/2007	5/15/2008	105F06
Whitehorse	YC60441	ANNA	21Donegal Dev.	5/15/2007	5/15/2008	105F06
Whitehorse	YC60442	ANNA	22Donegal Dev.	5/15/2007	5/15/2008	105F06
Whitehorse	YC60443	ANNA	23Donegal Dev.	5/15/2007	5/15/2008	105F06
Whitehorse	YC60444	ANNA	24Donegal Dev.	5/15/2007	5/15/2008	105F06
Whitehorse	YC60445	ANNA	25Donegal Dev.	5/15/2007	5/15/2008	105F06
Whitehorse	YC60446	ANNA	26Donegal Dev.	5/15/2007	5/15/2008	105F06
Whitehorse	YC60447	ANNA	27Donegal Dev.	5/15/2007	5/15/2008	105F06
Whitehorse	YC60448	ANNA	28Donegal Dev.	5/15/2007	5/15/2008	105F06
Whitehorse	YC60449	ANNA	29Donegal Dev.	5/15/2007	5/15/2008	105F06
Whitehorse	YC60450	ANNA	30Donegal Dev.	5/15/2007	5/15/2008	105F06
Whitehorse	YC60451	ANNA	31Donegal Dev.	5/15/2007	5/15/2008	105F06
Whitehorse	YC60452	ANNA	32Donegal Dev.	5/15/2007	5/15/2008	105F06
Whitehorse	YC60453	ANNA	33Donegal Dev.	5/15/2007	5/15/2008	105F06
Whitehorse	YC60454	ANNA	34Donegal Dev.	5/15/2007	5/15/2008	105F06
Whitehorse	YC60455	ANNA	35Donegal Dev.	5/15/2007	5/15/2008	105F06
Whitehorse	YC60456	ANNA	36Donegal Dev.	5/15/2007	5/15/2008	105F06
Whitehorse	YC60457	ANNA	37Donegal Dev.	5/15/2007	5/15/2008	105F06
Whitehorse	YC60458	ANNA	38Donegal Dev.	5/15/2007	5/15/2008	105F06
Whitehorse	YC60459	ANNA	39Donegal Dev.	5/15/2007	5/15/2008	105F06
Whitehorse	YC60460	ANNA	40Donegal Dev.	5/15/2007	5/15/2008	105F06
Whitehorse	YC60461	ANNA	41Donegal Dev.	5/15/2007	5/15/2008	105F06
Whitehorse	YC60462	ANNA	42Donegal Dev.	5/15/2007	5/15/2008	105F06
Whitehorse	YC60463	ANNA	43Donegal Dev.	5/15/2007	5/15/2008	105F06
Whitehorse	YC60464	ANNA	44Donegal Dev.	5/15/2007	5/15/2008	105F06
Whitehorse	YC60465	ANNA	45Donegal Dev.	5/15/2007	5/15/2008	105F06
Whitehorse	YC60466	ANNA	46Donegal Dev.	5/15/2007	5/15/2008	105F06
Whitehorse	YC60467	ANNA	47Donegal Dev.	5/15/2007	5/15/2008	105F06
Whitehorse	YC60468	ANNA	48Donegal Dev.	5/15/2007	5/15/2008	105F06
Whitehorse	YC60469	ANNA	49Donegal Dev.	5/15/2007	5/15/2008	105F06
Whitehorse	YC60470	ANNA	50Donegal Dev.	5/15/2007	5/15/2008	105F06
Whitehorse	YC60471	ANNA	51Donegal Dev.	5/15/2007	5/15/2008	105F06
Whitehorse	YC60472	ANNA	52Donegal Dev.	5/15/2007	5/15/2008	105F06
Whitehorse	YC60473	ANNA	53Donegal Dev.	5/15/2007	5/15/2008	105F06
Whitehorse	YC60474	ANNA	54Donegal Dev.	5/15/2007	5/15/2008	105F06
Whitehorse	YC60475	ANNA	55Donegal Dev.	5/15/2007	5/15/2008	105F06

Quiet Lake Nickel Project, YT – Magnetic Survey, September 2007

Whitehorse	YC60476	ANNA	56Donegal Dev.	5/15/2007	5/15/2008	105F06
Whitehorse	YC60477	ANNA	57Donegal Dev.	5/15/2007	5/15/2008	105F06
Whitehorse	YC60478	ANNA	58Donegal Dev.	5/15/2007	5/15/2008	105F06
Whitehorse	YC60479	ANNA	59Donegal Dev.	5/15/2007	5/15/2008	105F06
Whitehorse	YC60480	ANNA	60Donegal Dev.	5/15/2007	5/15/2008	105F06
Whitehorse	YC60481	ANNA	61Donegal Dev.	5/15/2007	5/15/2008	105F06
Whitehorse	YC60482	ANNA	62Donegal Dev.	5/15/2007	5/15/2008	105F06
Whitehorse	YC60483	ANNA	63Donegal Dev.	5/15/2007	5/15/2008	105F06
Whitehorse	YC60484	ANNA	64Donegal Dev.	5/15/2007	5/15/2008	105F06
Whitehorse	YC60485	ANNA	66Donegal Dev.	5/15/2007	5/15/2008	105F06
Whitehorse	YC60486	ANNA	67Donegal Dev.	5/15/2007	5/15/2008	105F06
Whitehorse	YC60487	ANNA	68Donegal Dev.	5/15/2007	5/15/2008	105F06
Whitehorse	YC60488	ANNA	69Donegal Dev.	5/15/2007	5/15/2008	105F06
Whitehorse	YC60489	ANNA	70Donegal Dev.	5/15/2007	5/15/2008	105F06
Whitehorse	YC60490	ANNA	71Donegal Dev.	5/15/2007	5/15/2008	105F06
Whitehorse	YC60491	ANNA	72Donegal Dev.	5/15/2007	5/15/2008	105F06
Whitehorse	YC60492	ANNA	73Donegal Dev.	5/15/2007	5/15/2008	105F06
Whitehorse	YC60493	ANNA	74Donegal Dev.	5/15/2007	5/15/2008	105F06
Whitehorse	YC60494	ANNA	75Donegal Dev.	5/15/2007	5/15/2008	105F06
Whitehorse	YC60495	ANNA	76Donegal Dev.	5/15/2007	5/15/2008	105F06
Whitehorse	YC60496	ANNA	77Donegal Dev.	5/15/2007	5/15/2008	105F06
Whitehorse	YC60497	ANNA	78Donegal Dev.	5/15/2007	5/15/2008	105F06
Whitehorse	YC60498	ANNA	79Donegal Dev.	5/15/2007	5/15/2008	105F06
Whitehorse	YC60499	ANNA	80Donegal Dev.	5/15/2007	5/15/2008	105F06
Whitehorse	YC60500	ANNA	81Donegal Dev.	5/15/2007	5/15/2008	105F06
Whitehorse	YC64001	ANNA	82Donegal Dev.	5/15/2007	5/15/2008	105F06
Whitehorse	YC64002	ANNA	83Donegal Dev.	5/15/2007	5/15/2008	105F06
Whitehorse	YC64003	ANNA	84Donegal Dev.	5/15/2007	5/15/2008	105F06
Whitehorse	YC64004	ANNA	85Donegal Dev.	5/15/2007	5/15/2008	105F06
Whitehorse	YC64005	ANNA	86Donegal Dev.	5/15/2007	5/15/2008	105F06
Whitehorse	YC64006	ANNA	87Donegal Dev.	5/15/2007	5/15/2008	105F06
Whitehorse	YC64007	ANNA	88Donegal Dev.	5/15/2007	5/15/2008	105F06
Whitehorse	YC64008	ANNA	89Donegal Dev.	5/15/2007	5/15/2008	105F06
Whitehorse	YC64009	ANNA	90Donegal Dev.	5/15/2007	5/15/2008	105F06
Whitehorse	YC64010	ANNA	91Donegal Dev.	5/15/2007	5/15/2008	105F06
Whitehorse	YC64011	ANNA	92Donegal Dev.	5/15/2007	5/15/2008	105F06
Whitehorse	YC64012	ANNA	93Donegal Dev.	5/15/2007	5/15/2008	105F06
Whitehorse	YC64013	ANNA	94Donegal Dev.	5/15/2007	5/15/2008	105F06
Whitehorse	YC64014	ANNA	95Donegal Dev.	5/15/2007	5/15/2008	105F06
Whitehorse	YC64015	ANNA	96Donegal Dev.	5/15/2007	5/15/2008	105F06
Whitehorse	YC64016	ANNA	97Donegal Dev.	5/15/2007	5/15/2008	105F06
Whitehorse	YC64017	ANNA	98Donegal Dev.	5/15/2007	5/15/2008	105F06
Whitehorse	YC64018	ANNA	99Donegal Dev.	5/15/2007	5/15/2008	105F06
Whitehorse	YC64019	ANNA	100Donegal Dev.	5/15/2007	5/15/2008	105F06

Quiet Lake Nickel Project, YT – Magnetic Survey, September 2007

Whitehorse	YC64020	ANNA	101	Donegal Dev.	5/15/2007	5/15/2008	105F06
Whitehorse	YC64021	ANNA	102	Donegal Dev.	5/15/2007	5/15/2008	105F06
Whitehorse	YC64022	ANNA	103	Donegal Dev.	5/15/2007	5/15/2008	105F06
Whitehorse	YC64023	ANNA	104	Donegal Dev.	5/15/2007	5/15/2008	105F06
Whitehorse	YC64024	ANNA	105	Donegal Dev.	5/15/2007	5/15/2008	105F06
Whitehorse	YC64025	ANNA	106	Donegal Dev.	5/15/2007	5/15/2008	105F06
Whitehorse	YC64026	ANNA	107	Donegal Dev.	5/15/2007	5/15/2008	105F06
Whitehorse	YC64027	ANNA	108	Donegal Dev.	5/15/2007	5/15/2008	105F06
Whitehorse	YC64028	ANNA	109	Donegal Dev.	5/15/2007	5/15/2008	105F06
Whitehorse	YC64029	ANNA	110	Donegal Dev.	5/15/2007	5/15/2008	105F06
Whitehorse	YC64030	ANNA	111	Donegal Dev.	5/15/2007	5/15/2008	105F06
Whitehorse	YC64031	ANNA	112	Donegal Dev.	5/15/2007	5/15/2008	105F06
Whitehorse	YC64032	ANNA	113	Donegal Dev.	5/15/2007	5/15/2008	105F06
Whitehorse	YC64033	ANNA	114	Donegal Dev.	5/15/2007	5/15/2008	105F06
Whitehorse	YC64034	ANNA	115	Donegal Dev.	5/15/2007	5/15/2008	105F06
Whitehorse	YC64035	ANNA	116	Donegal Dev.	5/15/2007	5/15/2008	105F06
Whitehorse	YC64036	ANNA	117	Donegal Dev.	5/15/2007	5/15/2008	105F06
Whitehorse	YC64037	ANNA	118	Donegal Dev.	5/15/2007	5/15/2008	105F06
Whitehorse	YC64038	ANNA	119	Donegal Dev.	5/15/2007	5/15/2008	105F06
Whitehorse	YC64039	ANNA	120	Donegal Dev.	5/15/2007	5/15/2008	105F06
Whitehorse	YC64040	ANNA	121	Donegal Dev.	5/15/2007	5/15/2008	105F06
Whitehorse	YC64041	ANNA	122	Donegal Dev.	5/15/2007	5/15/2008	105F06
Whitehorse	YC64042	ANNA	123	Donegal Dev.	5/15/2007	5/15/2008	105F06
Whitehorse	YC64043	ANNA	124	Donegal Dev.	5/15/2007	5/15/2008	105F06
Whitehorse	YC64044	ANNA	125	Donegal Dev.	5/15/2007	5/15/2008	105F06
Whitehorse	YC64045	ANNA	126	Donegal Dev.	5/15/2007	5/15/2008	105F06
Whitehorse	YC64046	ANNA	127	Donegal Dev.	5/15/2007	5/15/2008	105F06
Whitehorse	YC64047	ANNA	128	Donegal Dev.	5/15/2007	5/15/2008	105F06
Whitehorse	YC64048	ANNA	129	Donegal Dev.	5/15/2007	5/15/2008	105F06
Whitehorse	YC64049	ANNA	130	Donegal Dev.	5/15/2007	5/15/2008	105F06
Whitehorse	YC64050	ANNA	131	Donegal Dev.	5/15/2007	5/15/2008	105F06
Whitehorse	YC64051	ANNA	132	Donegal Dev.	5/15/2007	5/15/2008	105F06
Whitehorse	YC64052	ANNA	133	Donegal Dev.	5/15/2007	5/15/2008	105F06
Whitehorse	YC64053	ANNA	134	Donegal Dev.	5/15/2007	5/15/2008	105F06
Whitehorse	YC64054	ANNA	135	Donegal Dev.	5/15/2007	5/15/2008	105F06
Whitehorse	YC64055	ANNA	136	Donegal Dev.	5/15/2007	5/15/2008	105F06
Whitehorse	YC64056	ANNA	137	Donegal Dev.	5/15/2007	5/15/2008	105F06
Whitehorse	YC64057	ANNA	138	Donegal Dev.	5/15/2007	5/15/2008	105F06
Whitehorse	YC64058	ANNA	139	Donegal Dev.	5/15/2007	5/15/2008	105F06
Whitehorse	YC64059	ANNA	140	Donegal Dev.	5/15/2007	5/15/2008	105F06
Whitehorse	YC64060	ANNA	141	Donegal Dev.	5/15/2007	5/15/2008	105F06
Whitehorse	YC64061	ANNA	142	Donegal Dev.	5/15/2007	5/15/2008	105F06
Whitehorse	YC64062	ANNA	143	Donegal Dev.	5/15/2007	5/15/2008	105F06
Whitehorse	YC64063	ANNA	144	Donegal Dev.	5/15/2007	5/15/2008	105F06

Quiet Lake Nickel Project, YT – Magnetic Survey, September 2007

Whitehorse	YC64064	ANNA	145	Donegal Dev.	5/15/2007	5/15/2008	105F06
Whitehorse	YC64065	ANNA	146	Donegal Dev.	5/15/2007	5/15/2008	105F06
Whitehorse	YC64066	ANNA	147	Donegal Dev.	5/15/2007	5/15/2008	105F06
Whitehorse	YC64067	ANNA	148	Donegal Dev.	5/15/2007	5/15/2008	105F06
Whitehorse	YC64068	ANNA	149	Donegal Dev.	5/15/2007	5/15/2008	105F06
Whitehorse	YC64069	ANNA	150	Donegal Dev.	5/15/2007	5/15/2008	105F06
Whitehorse	YC64070	ANNA	151	Donegal Dev.	5/15/2007	5/15/2008	105F06
Whitehorse	YC64071	ANNA	152	Donegal Dev.	5/15/2007	5/15/2008	105F06
Whitehorse	YC64072	ANNA	153	Donegal Dev.	5/15/2007	5/15/2008	105F06
Whitehorse	YC64073	ANNA	154	Donegal Dev.	5/15/2007	5/15/2008	105F06
Whitehorse	YC64074	ANNA	155	Donegal Dev.	5/15/2007	5/15/2008	105F06
Whitehorse	YC64075	ANNA	156	Donegal Dev.	5/15/2007	5/15/2008	105F06
Whitehorse	YC64076	ANNA	157	Donegal Dev.	5/15/2007	5/15/2008	105F06
Whitehorse	YC64077	ANNA	158	Donegal Dev.	5/15/2007	5/15/2008	105F06
Whitehorse	YC64078	ANNA	159	Donegal Dev.	5/15/2007	5/15/2008	105F06
Whitehorse	YC64079	ANNA	160	Donegal Dev.	5/15/2007	5/15/2008	105F06
Whitehorse	YC64080	ANNA	161	Donegal Dev.	5/15/2007	5/15/2008	105F06
Whitehorse	YC64081	ANNA	162	Donegal Dev.	5/15/2007	5/15/2008	105F06
Whitehorse	YC64082	ANNA	163	Donegal Dev.	5/15/2007	5/15/2008	105F06
Whitehorse	YC64083	ANNA	164	Donegal Dev.	5/15/2007	5/15/2008	105F06
Whitehorse	YC64084	ANNA	165	Donegal Dev.	5/15/2007	5/15/2008	105F06
Whitehorse	YC64085	ANNA	166	Donegal Dev.	5/15/2007	5/15/2008	105F06
Whitehorse	YC64086	ANNA	167	Donegal Dev.	5/15/2007	5/15/2008	105F06
Whitehorse	YC64087	ANNA	168	Donegal Dev.	5/15/2007	5/15/2008	105F06
Whitehorse	YC64088	ANNA	169	Donegal Dev.	5/15/2007	5/15/2008	105F06
Whitehorse	YC64089	ANNA	170	Donegal Dev.	5/15/2007	5/15/2008	105F06
Whitehorse	YC64090	ANNA	171	Donegal Dev.	5/15/2007	5/15/2008	105F06
Whitehorse	YC64091	ANNA	172	Donegal Dev.	5/15/2007	5/15/2008	105F06
Whitehorse	YC64092	ANNA	173	Donegal Dev.	5/15/2007	5/15/2008	105F06
Whitehorse	YC64093	ANNA	174	Donegal Dev.	5/15/2007	5/15/2008	105F06
Whitehorse	YC64094	ANNA	175	Donegal Dev.	5/15/2007	5/15/2008	105F06
Whitehorse	YC64095	ANNA	176	Donegal Dev.	5/15/2007	5/15/2008	105F06
Whitehorse	YC64096	ANNA	177	Donegal Dev.	5/15/2007	5/15/2008	105F06
Whitehorse	YC64097	ANNA	178	Donegal Dev.	5/15/2007	5/15/2008	105F06
Whitehorse	YC64098	ANNA	179	Donegal Dev.	5/15/2007	5/15/2008	105F06
Whitehorse	YC64099	ANNA	180	Donegal Dev.	5/15/2007	5/15/2008	105F06
Whitehorse	YC64100	ANNA	181	Donegal Dev.	5/15/2007	5/15/2008	105F06
Whitehorse	YC64101	ANNA	182	Donegal Dev.	5/15/2007	5/15/2008	105F06
Whitehorse	YC64102	ANNA	183	Donegal Dev.	5/15/2007	5/15/2008	105F06
Whitehorse	YC64103	ANNA	184	Donegal Dev.	5/15/2007	5/15/2008	105F06
Whitehorse	YC64104	ANNA	185	Donegal Dev.	5/15/2007	5/15/2008	105F06
Whitehorse	YC64105	ANNA	186	Donegal Dev.	5/15/2007	5/15/2008	105F06
Whitehorse	YC64106	ANNA	187	Donegal Dev.	5/15/2007	5/15/2008	105F06
Whitehorse	YC64107	ANNA	188	Donegal Dev.	5/15/2007	5/15/2008	105F06

Quiet Lake Nickel Project, YT – Magnetic Survey, September 2007

Whitehorse	YC64108	ANNA	189Donegal Dev.	5/15/2007	5/15/2008	105F06
Whitehorse	YC64109	ANNA	190Donegal Dev.	5/15/2007	5/15/2008	105F06
Whitehorse	YC64110	ANNA	191Donegal Dev.	5/15/2007	5/15/2008	105F06
Whitehorse	YC64111	ANNA	192Donegal Dev.	5/15/2007	5/15/2008	105F06
Whitehorse	YC64112	ANNA	193Donegal Dev.	5/15/2007	5/15/2008	105F06
Whitehorse	YC64113	ANNA	194Donegal Dev.	5/15/2007	5/15/2008	105F06
Whitehorse	YC64114	ANNA	195Donegal Dev.	5/15/2007	5/15/2008	105F06
Whitehorse	YC64115	ANNA	196Donegal Dev.	5/15/2007	5/15/2008	105F06
Whitehorse	YC64116	ANNA	197Donegal Dev.	5/15/2007	5/15/2008	105F06
Whitehorse	YC64117	ANNA	198Donegal Dev.	5/15/2007	5/15/2008	105F06
Whitehorse	YC64118	ANNA	201Donegal Dev.	5/15/2007	5/15/2008	105F06
Whitehorse	YC64119	ANNA	202Donegal Dev.	5/15/2007	5/15/2008	105F06
Whitehorse	YC64120	ANNA	203Donegal Dev.	5/15/2007	5/15/2008	105F06
Whitehorse	YC64121	ANNA	204Donegal Dev.	5/15/2007	5/15/2008	105F06
Whitehorse	YC64122	ANNA	205Donegal Dev.	5/15/2007	5/15/2008	105F06
Whitehorse	YC64124	ANNA	207Donegal Dev.	5/15/2007	5/15/2008	105F06
Whitehorse	YC64125	ANNA	208Donegal Dev.	5/15/2007	5/15/2008	105F06
Whitehorse	YC64126	ANNA	209Donegal Dev.	5/15/2007	5/15/2008	105F06
Whitehorse	YC64127	ANNA	210Donegal Dev.	5/15/2007	5/15/2008	105F06
Whitehorse	YC64128	ANNA	211Donegal Dev.	5/15/2007	5/15/2008	105F06
Whitehorse	YC64129	ANNA	212Donegal Dev.	5/15/2007	5/15/2008	105F06
Whitehorse	YC64130	ANNA	213Donegal Dev.	5/15/2007	5/15/2008	105F06
Whitehorse	YC64131	ANNA	214Donegal Dev.	5/15/2007	5/15/2008	105F06
Whitehorse	YC64132	ANNA	215Donegal Dev.	5/15/2007	5/15/2008	105F06
Whitehorse	YC64133	ANNA	216Donegal Dev.	5/15/2007	5/15/2008	105F06
Whitehorse	YC64134	ANNA	217Donegal Dev.	5/15/2007	5/15/2008	105F06
Whitehorse	YC64135	ANNA	218Donegal Dev.	5/15/2007	5/15/2008	105F06
Whitehorse	YC64136	ANNA	219Donegal Dev.	5/15/2007	5/15/2008	105F06
Whitehorse	YC64137	ANNA	220Donegal Dev.	5/15/2007	5/15/2008	105F06
Whitehorse	YC64138	ANNA	221Donegal Dev.	5/15/2007	5/15/2008	105F06
Whitehorse	YC64139	ANNA	222Donegal Dev.	5/15/2007	5/15/2008	105F06
Whitehorse	YC64140	ANNA	223Donegal Dev.	5/15/2007	5/15/2008	105F06
Whitehorse	YC64141	ANNA	224Donegal Dev.	5/15/2007	5/15/2008	105F06
Whitehorse	YC64142	ANNA	225Donegal Dev.	5/15/2007	5/15/2008	105F06
Whitehorse	YC64143	ANNA	226Donegal Dev.	5/15/2007	5/15/2008	105F06
Whitehorse	YC64144	ANNA	227Donegal Dev.	5/15/2007	5/15/2008	105F06
Whitehorse	YC64145	ANNA	228Donegal Dev.	5/15/2007	5/15/2008	105F06
Whitehorse	YC64146	ANNA	229Donegal Dev.	5/15/2007	5/15/2008	105F06
Whitehorse	YC64147	ANNA	230Donegal Dev.	5/15/2007	5/15/2008	105F06
Whitehorse	YC64148	ANNA	231Donegal Dev.	5/15/2007	5/15/2008	105F06
Whitehorse	YC64149	ANNA	232Donegal Dev.	5/15/2007	5/15/2008	105F06
Whitehorse	YC64150	ANNA	233Donegal Dev.	5/15/2007	5/15/2008	105F06
Whitehorse	YC64151	ANNA	234Donegal Dev.	5/15/2007	5/15/2008	105F06
Whitehorse	YC64152	ANNA	235Donegal Dev.	5/15/2007	5/15/2008	105F06

Quiet Lake Nickel Project, YT – Magnetic Survey, September 2007

Whitehorse	YC64153	ANNA	236Donegal Dev.	5/15/2007	5/15/2008	105F06
Whitehorse	YC64154	ANNA	237Donegal Dev.	5/15/2007	5/15/2008	105F06
Whitehorse	YC64155	ANNA	238Donegal Dev.	5/15/2007	5/15/2008	105F06
Whitehorse	YC64156	ANNA	239Donegal Dev.	5/15/2007	5/15/2008	105F06
Whitehorse	YC64157	ANNA	240Donegal Dev.	5/15/2007	5/15/2008	105F06
Whitehorse	YC64158	ANNA	241Donegal Dev.	5/15/2007	5/15/2008	105F06
Whitehorse	YC64159	ANNA	242Donegal Dev.	5/15/2007	5/15/2008	105F06
Whitehorse	YC64160	ANNA	243Donegal Dev.	5/15/2007	5/15/2008	105F06
Whitehorse	YC64161	ANNA	244Donegal Dev.	5/15/2007	5/15/2008	105F06
Whitehorse	YC64162	ANNA	247Donegal Dev.	5/15/2007	5/15/2008	105F06
Whitehorse	YC64163	ANNA	248Donegal Dev.	5/15/2007	5/15/2008	105F06
Whitehorse	YC64164	ANNA	249Donegal Dev.	5/15/2007	5/15/2008	105F06
Whitehorse	YC64165	ANNA	250Donegal Dev.	5/15/2007	5/15/2008	105F06
Whitehorse	YC64166	ANNA	251Donegal Dev.	5/15/2007	5/15/2008	105F06
Whitehorse	YC64167	ANNA	252Donegal Dev.	5/15/2007	5/15/2008	105F06
Whitehorse	YC64168	ANNA	253Donegal Dev.	5/15/2007	5/15/2008	105F06
Whitehorse	YC64169	ANNA	254Donegal Dev.	5/15/2007	5/15/2008	105F06
Whitehorse	YC64170	ANNA	255Donegal Dev.	5/15/2007	5/15/2008	105F06
Whitehorse	YC64171	ANNA	256Donegal Dev.	5/15/2007	5/15/2008	105F06
Whitehorse	YC64172	ANNA	257Donegal Dev.	5/15/2007	5/15/2008	105F06
Whitehorse	YC64173	ANNA	258Donegal Dev.	5/15/2007	5/15/2008	105F06
Whitehorse	YC64174	ANNA	259Donegal Dev.	5/15/2007	5/15/2008	105F06
Whitehorse	YC64175	ANNA	260Donegal Dev.	5/15/2007	5/15/2008	105F06
Whitehorse	YC64176	ANNA	261Donegal Dev.	5/15/2007	5/15/2008	105F06
Whitehorse	YC64177	ANNA	262Donegal Dev.	5/15/2007	5/15/2008	105F06
Whitehorse	YC64178	ANNA	263Donegal Dev.	5/15/2007	5/15/2008	105F06
Whitehorse	YC64179	ANNA	264Donegal Dev.	5/15/2007	5/15/2008	105F06
Whitehorse	YC64180	ANNA	265Donegal Dev.	5/15/2007	5/15/2008	105F06
Whitehorse	YC64181	ANNA	266Donegal Dev.	5/15/2007	5/15/2008	105F06
Whitehorse	YC64182	ANNA	267Donegal Dev.	5/15/2007	5/15/2008	105F06
Whitehorse	YC64183	ANNA	268Donegal Dev.	5/15/2007	5/15/2008	105F06
Whitehorse	YC64184	ANNA	269Donegal Dev.	5/15/2007	5/15/2008	105F06
Whitehorse	YC64185	ANNA	270Donegal Dev.	5/15/2007	5/15/2008	105F06
Whitehorse	YC64186	ANNA	271Donegal Dev.	5/15/2007	5/15/2008	105F06
Whitehorse	YC64187	ANNA	272Donegal Dev.	5/15/2007	5/15/2008	105F06
Whitehorse	YC64188	ANNA	273Donegal Dev.	5/15/2007	5/15/2008	105F06
Whitehorse	YC64189	ANNA	274Donegal Dev.	5/15/2007	5/15/2008	105F06
Whitehorse	YC64190	ANNA	275Donegal Dev.	5/15/2007	5/15/2008	105F06
Whitehorse	YC64191	ANNA	276Donegal Dev.	5/15/2007	5/15/2008	105F06
Whitehorse	YC64192	ANNA	277Donegal Dev.	5/15/2007	5/15/2008	105F06
Whitehorse	YC64193	ANNA	278Donegal Dev.	5/15/2007	5/15/2008	105F06
Whitehorse	YC64194	ANNA	279Donegal Dev.	5/15/2007	5/15/2008	105F06
Whitehorse	YC64195	ANNA	280Donegal Dev.	5/15/2007	5/15/2008	105F06
Whitehorse	YC64196	ANNA	281Donegal Dev.	5/15/2007	5/15/2008	105F06

Quiet Lake Nickel Project, YT – Magnetic Survey, September 2007

Whitehorse	YC64197	ANNA	282Donegal Dev.	5/15/2007	5/15/2008	105F06
Whitehorse	YC64198	ANNA	283Donegal Dev.	5/15/2007	5/15/2008	105F06
Whitehorse	YC64199	ANNA	284Donegal Dev.	5/15/2007	5/15/2008	105F06
Whitehorse	YC64200	ANNA	285Donegal Dev.	5/15/2007	5/15/2008	105F06
Whitehorse	YC64201	ANNA	286Donegal Dev.	5/15/2007	5/15/2008	105F06
Whitehorse	YC64202	ANNA	287Donegal Dev.	5/15/2007	5/15/2008	105F06
Whitehorse	YC64203	ANNA	288Donegal Dev.	5/15/2007	5/15/2008	105F06
Whitehorse	YC64204	ANNA	289Donegal Dev.	5/15/2007	5/15/2008	105F06
Whitehorse	YC64205	ANNA	290Donegal Dev.	5/15/2007	5/15/2008	105F06
Whitehorse	YC64206	ANNA	293Donegal Dev.	5/15/2007	5/15/2008	105F06
Whitehorse	YC64207	ANNA	294Donegal Dev.	5/15/2007	5/15/2008	105F06
Whitehorse	YC64208	ANNA	295Donegal Dev.	5/15/2007	5/15/2008	105F06
Whitehorse	YC64209	ANNA	296Donegal Dev.	5/15/2007	5/15/2008	105F06
Whitehorse	YC64210	ANNA	297Donegal Dev.	5/15/2007	5/15/2008	105F06
Whitehorse	YC64211	ANNA	298Donegal Dev.	5/15/2007	5/15/2008	105F06
Whitehorse	YC64212	ANNA	299Donegal Dev.	5/15/2007	5/15/2008	105F06
Whitehorse	YC64213	ANNA	300Donegal Dev.	5/15/2007	5/15/2008	105F06
Whitehorse	YC64214	ANNA	301Donegal Dev.	5/15/2007	5/15/2008	105F06
Whitehorse	YC64215	ANNA	302Donegal Dev.	5/15/2007	5/15/2008	105F06
Whitehorse	YC64216	ANNA	303Donegal Dev.	5/15/2007	5/15/2008	105F06
Whitehorse	YC64217	ANNA	304Donegal Dev.	5/15/2007	5/15/2008	105F06
Whitehorse	YC64218	ANNA	305Donegal Dev.	5/15/2007	5/15/2008	105F06
Whitehorse	YC64219	ANNA	306Donegal Dev.	5/15/2007	5/15/2008	105F06
Whitehorse	YC64220	ANNA	307Donegal Dev.	5/15/2007	5/15/2008	105F06
Whitehorse	YC64221	ANNA	308Donegal Dev.	5/15/2007	5/15/2008	105F06
Whitehorse	YC64222	ANNA	309Donegal Dev.	5/15/2007	5/15/2008	105F06
Whitehorse	YC64223	ANNA	310Donegal Dev.	5/15/2007	5/15/2008	105F06
Whitehorse	YC64224	ANNA	311Donegal Dev.	5/15/2007	5/15/2008	105F06
Whitehorse	YC64225	ANNA	312Donegal Dev.	5/15/2007	5/15/2008	105F06
Whitehorse	YC64226	ANNA	313Donegal Dev.	5/15/2007	5/15/2008	105F06
Whitehorse	YC64227	ANNA	314Donegal Dev.	5/15/2007	5/15/2008	105F06
Whitehorse	YC64228	ANNA	315Donegal Dev.	5/15/2007	5/15/2008	105F06
Whitehorse	YC64229	ANNA	316Donegal Dev.	5/15/2007	5/15/2008	105F06
Whitehorse	YC64230	ANNA	317Donegal Dev.	5/15/2007	5/15/2008	105F06
Whitehorse	YC64231	ANNA	318Donegal Dev.	5/15/2007	5/15/2008	105F06
Whitehorse	YC64232	ANNA	319Donegal Dev.	5/15/2007	5/15/2008	105F06
Whitehorse	YC64233	ANNA	320Donegal Dev.	5/15/2007	5/15/2008	105F06
Whitehorse	YC64234	ANNA	321Donegal Dev.	5/15/2007	5/15/2008	105F06
Whitehorse	YC64235	ANNA	322Donegal Dev.	5/15/2007	5/15/2008	105F06
Whitehorse	YC64236	ANNA	323Donegal Dev.	5/15/2007	5/15/2008	105F06
Whitehorse	YC64237	ANNA	324Donegal Dev.	5/15/2007	5/15/2008	105F06
Whitehorse	YC64238	ANNA	325Donegal Dev.	5/15/2007	5/15/2008	105F06
Whitehorse	YC64239	ANNA	326Donegal Dev.	5/15/2007	5/15/2008	105F06
Whitehorse	YC64240	ANNA	327Donegal Dev.	5/15/2007	5/15/2008	105F06

Quiet Lake Nickel Project, YT – Magnetic Survey, September 2007

Whitehorse	YC64241	ANNA	328Donegal Dev.	5/15/2007	5/15/2008	105F06
Whitehorse	YC64242	ANNA	329Donegal Dev.	5/15/2007	5/15/2008	105F06
Whitehorse	YC64243	ANNA	330Donegal Dev.	5/15/2007	5/15/2008	105F06
Whitehorse	YC64244	ANNA	331Donegal Dev.	5/15/2007	5/15/2008	105F06
Whitehorse	YC64245	ANNA	332Donegal Dev.	5/15/2007	5/15/2008	105F06
Whitehorse	YC64246	ANNA	333Donegal Dev.	5/15/2007	5/15/2008	105F06
Whitehorse	YC64247	ANNA	334Donegal Dev.	5/15/2007	5/15/2008	105F06
Whitehorse	YC64248	ANNA	335Donegal Dev.	5/15/2007	5/15/2008	105F06
Whitehorse	YC64249	ANNA	336Donegal Dev.	5/15/2007	5/15/2008	105F06
Whitehorse	YC64250	ANNA	339Donegal Dev.	5/15/2007	5/15/2008	105F06
Whitehorse	YC64251	ANNA	340Donegal Dev.	5/15/2007	5/15/2008	105F06
Whitehorse	YC64252	ANNA	341Donegal Dev.	5/15/2007	5/15/2008	105F06
Whitehorse	YC64253	ANNA	342Donegal Dev.	5/15/2007	5/15/2008	105F06
Whitehorse	YC64254	ANNA	343Donegal Dev.	5/15/2007	5/15/2008	105F06
Whitehorse	YC64255	ANNA	344Donegal Dev.	5/15/2007	5/15/2008	105F06
Whitehorse	YC64256	ANNA	345Donegal Dev.	5/15/2007	5/15/2008	105F06
Whitehorse	YC64257	ANNA	346Donegal Dev.	5/15/2007	5/15/2008	105F06
Whitehorse	YC64258	ANNA	347Donegal Dev.	5/15/2007	5/15/2008	105F06
Whitehorse	YC64259	ANNA	348Donegal Dev.	5/15/2007	5/15/2008	105F06
Whitehorse	YC64260	ANNA	349Donegal Dev.	5/15/2007	5/15/2008	105F06
Whitehorse	YC64261	ANNA	350Donegal Dev.	5/15/2007	5/15/2008	105F06
Whitehorse	YC64262	ANNA	351Donegal Dev.	5/15/2007	5/15/2008	105F06
Whitehorse	YC64263	ANNA	352Donegal Dev.	5/15/2007	5/15/2008	105F06
Whitehorse	YC64264	ANNA	353Donegal Dev.	5/15/2007	5/15/2008	105F06
Whitehorse	YC64265	ANNA	354Donegal Dev.	5/15/2007	5/15/2008	105F06
Whitehorse	YC64266	ANNA	355Donegal Dev.	5/15/2007	5/15/2008	105F06
Whitehorse	YC64267	ANNA	356Donegal Dev.	5/15/2007	5/15/2008	105F06
Whitehorse	YC64268	ANNA	357Donegal Dev.	5/15/2007	5/15/2008	105F06
Whitehorse	YC64269	ANNA	358Donegal Dev.	5/15/2007	5/15/2008	105F06
Whitehorse	YC64270	ANNA	359Donegal Dev.	5/15/2007	5/15/2008	105F06
Whitehorse	YC64271	ANNA	360Donegal Dev.	5/15/2007	5/15/2008	105F06
Whitehorse	YC64272	ANNA	361Donegal Dev.	5/15/2007	5/15/2008	105F06
Whitehorse	YC64273	ANNA	362Donegal Dev.	5/15/2007	5/15/2008	105F06
Whitehorse	YC64274	ANNA	363Donegal Dev.	5/15/2007	5/15/2008	105F06
Whitehorse	YC64275	ANNA	364Donegal Dev.	5/15/2007	5/15/2008	105F06
Whitehorse	YC64276	ANNA	365Donegal Dev.	5/15/2007	5/15/2008	105F06
Whitehorse	YC64277	ANNA	366Donegal Dev.	5/15/2007	5/15/2008	105F06
Whitehorse	YC64278	ANNA	367Donegal Dev.	5/15/2007	5/15/2008	105F06
Whitehorse	YC64279	ANNA	368Donegal Dev.	5/15/2007	5/15/2008	105F06
Whitehorse	YC64280	ANNA	369Donegal Dev.	5/15/2007	5/15/2008	105F06
Whitehorse	YC64281	ANNA	370Donegal Dev.	5/15/2007	5/15/2008	105F06
Whitehorse	YC64282	ANNA	371Donegal Dev.	5/15/2007	5/15/2008	105F06
Whitehorse	YC64283	ANNA	372Donegal Dev.	5/15/2007	5/15/2008	105F06
Whitehorse	YC64284	ANNA	373Donegal Dev.	5/15/2007	5/15/2008	105F06

Quiet Lake Nickel Project, YT – Magnetic Survey, September 2007

Whitehorse	YC64285	ANNA	374	Donegal Dev.	5/15/2007	5/15/2008	105F06
Whitehorse	YC64286	ANNA	375	Donegal Dev.	5/15/2007	5/15/2008	105F06
Whitehorse	YC64287	ANNA	376	Donegal Dev.	5/15/2007	5/15/2008	105F06
Whitehorse	YC64288	ANNA	377	Donegal Dev.	5/15/2007	5/15/2008	105F06
Whitehorse	YC64289	ANNA	378	Donegal Dev.	5/15/2007	5/15/2008	105F06
Whitehorse	YC64290	ANNA	379	Donegal Dev.	5/15/2007	5/15/2008	105F06
Whitehorse	YC64291	ANNA	380	Donegal Dev.	5/15/2007	5/15/2008	105F06
Whitehorse	YC64292	ANNA	381	Donegal Dev.	5/15/2007	5/15/2008	105F06
Whitehorse	YC64293	ANNA	382	Donegal Dev.	5/15/2007	5/15/2008	105F06
Whitehorse	YC64294	ANNA	383	Donegal Dev.	5/15/2007	5/15/2008	105F06
Whitehorse	YC64295	ANNA	384	Donegal Dev.	5/15/2007	5/15/2008	105F06
Whitehorse	YC64296	ANNA	385	Donegal Dev.	5/15/2007	5/15/2008	105F06
Whitehorse	YC64297	ANNA	386	Donegal Dev.	5/15/2007	5/15/2008	105F06
Whitehorse	YC64298	ANNA	387	Donegal Dev.	5/15/2007	5/15/2008	105F06
Whitehorse	YC64299	ANNA	388	Donegal Dev.	5/15/2007	5/15/2008	105F06
Whitehorse	YC64300	ANNA	389	Donegal Dev.	5/15/2007	5/15/2008	105F06
Whitehorse	YC64301	ANNA	390	Donegal Dev.	5/15/2007	5/15/2008	105F06
Whitehorse	YC64302	ANNA	391	Donegal Dev.	5/15/2007	5/15/2008	105F06
Whitehorse	YC64303	ANNA	392	Donegal Dev.	5/15/2007	5/15/2008	105F06
Whitehorse	YC64304	ANNA	393	Donegal Dev.	5/15/2007	5/15/2008	105F06
Whitehorse	YC64305	ANNA	394	Donegal Dev.	5/15/2007	5/15/2008	105F06
Whitehorse	YC64306	ANNA	395	Donegal Dev.	5/15/2007	5/15/2008	105F06
Whitehorse	YC64307	ANNA	396	Donegal Dev.	5/15/2007	5/15/2008	105F06
Whitehorse	YC64308	ANNA	397	Donegal Dev.	5/15/2007	5/15/2008	105F06
Whitehorse	YC64309	ANNA	398	Donegal Dev.	5/15/2007	5/15/2008	105F06
Whitehorse	YC64310	ANNA	399	Donegal Dev.	5/15/2007	5/15/2008	105F06
Whitehorse	YC64311	ANNA	400	Donegal Dev.	5/15/2007	5/15/2008	105F06
Whitehorse	YC64312	ANNA	401	Donegal Dev.	5/15/2007	5/15/2008	105F06
Whitehorse	YC64313	ANNA	402	Donegal Dev.	5/15/2007	5/15/2008	105F06
Whitehorse	YC64314	ANNA	403	Donegal Dev.	5/15/2007	5/15/2008	105F06
Whitehorse	YC64315	ANNA	404	Donegal Dev.	5/15/2007	5/15/2008	105F06
Whitehorse	YC64316	ANNA	405	Donegal Dev.	5/15/2007	5/15/2008	105F06
Whitehorse	YC64317	ANNA	406	Donegal Dev.	5/15/2007	5/15/2008	105F06
Whitehorse	YC64318	ANNA	407	Donegal Dev.	5/15/2007	5/15/2008	105F06
Whitehorse	YC64319	ANNA	408	Donegal Dev.	5/15/2007	5/15/2008	105F06
Whitehorse	YC64320	ANNA	409	Donegal Dev.	5/15/2007	5/15/2008	105F06
Whitehorse	YC64321	ANNA	410	Donegal Dev.	5/15/2007	5/15/2008	105F06
Whitehorse	YC64322	ANNA	411	Donegal Dev.	5/15/2007	5/15/2008	105F06
Whitehorse	YC64323	ANNA	412	Donegal Dev.	5/15/2007	5/15/2008	105F06
Whitehorse	YC64324	ANNA	413	Donegal Dev.	5/15/2007	5/15/2008	105F06
Whitehorse	YC64325	ANNA	414	Donegal Dev.	5/15/2007	5/15/2008	105F06
Whitehorse	YC64326	ANNA	415	Donegal Dev.	5/15/2007	5/15/2008	105F06
Whitehorse	YC64327	ANNA	416	Donegal Dev.	5/15/2007	5/15/2008	105F06
Whitehorse	YC64328	ANNA	417	Donegal Dev.	5/15/2007	5/15/2008	105F06

Quiet Lake Nickel Project, YT – Magnetic Survey, September 2007

Whitehorse	YC64329	ANNA	418Donegal Dev.	5/15/2007	5/15/2008	105F06
Whitehorse	YC64330	ANNA	419Donegal Dev.	5/15/2007	5/15/2008	105F06
Whitehorse	YC64331	ANNA	420Donegal Dev.	5/15/2007	5/15/2008	105F06
Whitehorse	YC64332	ANNA	421Donegal Dev.	5/15/2007	5/15/2008	105F06
Whitehorse	YC64333	ANNA	422Donegal Dev.	5/15/2007	5/15/2008	105F06
Whitehorse	YC64334	ANNA	423Donegal Dev.	5/15/2007	5/15/2008	105F06
Whitehorse	YC64335	ANNA	424Donegal Dev.	5/15/2007	5/15/2008	105F06
Whitehorse	YC64336	ANNA	425Donegal Dev.	5/15/2007	5/15/2008	105F06
Whitehorse	YC64337	ANNA	426Donegal Dev.	5/15/2007	5/15/2008	105F06
Whitehorse	YC64338	ANNA	427Donegal Dev.	5/15/2007	5/15/2008	105F06
Whitehorse	YC64339	ANNA	428Donegal Dev.	5/15/2007	5/15/2008	105F06
Whitehorse	YC64340	ANNA	429Donegal Dev.	5/15/2007	5/15/2008	105F06
Whitehorse	YC64341	ANNA	430Donegal Dev.	5/15/2007	5/15/2008	105F06
Whitehorse	YC64342	ANNA	431Donegal Dev.	5/15/2007	5/15/2008	105F06
Whitehorse	YC64343	ANNA	432Donegal Dev.	5/15/2007	5/15/2008	105F06
Whitehorse	YC64344	ANNA	433Donegal Dev.	5/15/2007	5/15/2008	105F06
Whitehorse	YC64345	ANNA	434Donegal Dev.	5/15/2007	5/15/2008	105F06
Whitehorse	YC64346	ANNA	435Donegal Dev.	5/15/2007	5/15/2008	105F06
Whitehorse	YC64347	ANNA	436Donegal Dev.	5/15/2007	5/15/2008	105F06
Whitehorse	YC64348	ANNA	437Donegal Dev.	5/15/2007	5/15/2008	105F06
Whitehorse	YC64349	ANNA	438Donegal Dev.	5/15/2007	5/15/2008	105F06
Whitehorse	YC64350	ANNA	439Donegal Dev.	5/15/2007	5/15/2008	105F06
Whitehorse	YC64351	ANNA	440Donegal Dev.	5/15/2007	5/15/2008	105F06
Whitehorse	YC64352	ANNA	441Donegal Dev.	5/15/2007	5/15/2008	105F06
Whitehorse	YC64353	ANNA	442Donegal Dev.	5/15/2007	5/15/2008	105F06
Whitehorse	YC64354	ANNA	443Donegal Dev.	5/15/2007	5/15/2008	105F06
Whitehorse	YC64355	ANNA	444Donegal Dev.	5/15/2007	5/15/2008	105F06
Whitehorse	YC64356	ANNA	445Donegal Dev.	5/15/2007	5/15/2008	105F06
Whitehorse	YC64357	ANNA	446Donegal Dev.	5/15/2007	5/15/2008	105F06
Whitehorse	YC64358	ANNA	447Donegal Dev.	5/15/2007	5/15/2008	105F06
Whitehorse	YC64359	ANNA	448Donegal Dev.	5/15/2007	5/15/2008	105F06
Whitehorse	YC64360	ANNA	449Donegal Dev.	5/15/2007	5/15/2008	105F06
Whitehorse	YC64361	ANNA	450Donegal Dev.	5/15/2007	5/15/2008	105F06
Whitehorse	YC64362	ANNA	451Donegal Dev.	5/15/2007	5/15/2008	105F06
Whitehorse	YC64363	ANNA	452Donegal Dev.	5/15/2007	5/15/2008	105F06
Whitehorse	YC64364	ANNA	453Donegal Dev.	5/15/2007	5/15/2008	105F06
Whitehorse	YC64365	ANNA	454Donegal Dev.	5/15/2007	5/15/2008	105F06
Whitehorse	YC64366	ANNA	455Donegal Dev.	5/15/2007	5/15/2008	105F06
Whitehorse	YC64367	ANNA	456Donegal Dev.	5/15/2007	5/15/2008	105F06
Whitehorse	YC64368	ANNA	457Donegal Dev.	5/15/2007	5/15/2008	105F06
Whitehorse	YC64369	ANNA	458Donegal Dev.	5/15/2007	5/15/2008	105F06
Whitehorse	YC64370	ANNA	459Donegal Dev.	5/15/2007	5/15/2008	105F06
Whitehorse	YC64371	ANNA	460Donegal Dev.	5/15/2007	5/15/2008	105F06
Whitehorse	YC64372	ANNA	461Donegal Dev.	5/15/2007	5/15/2008	105F06

Quiet Lake Nickel Project, YT – Magnetic Survey, September 2007

Whitehorse	YC64373	ANNA	462Donegal Dev.	5/15/2007	5/15/2008	105F06
Whitehorse	YC64374	ANNA	463Donegal Dev.	5/15/2007	5/15/2008	105F06
Whitehorse	YC64375	ANNA	464Donegal Dev.	5/15/2007	5/15/2008	105F06
Whitehorse	YC64376	ANNA	465Donegal Dev.	5/15/2007	5/15/2008	105F06
Whitehorse	YC64377	ANNA	466Donegal Dev.	5/15/2007	5/15/2008	105F06
Whitehorse	YC64378	ANNA	467Donegal Dev.	5/15/2007	5/15/2008	105F06
Whitehorse	YC64379	ANNA	468Donegal Dev.	5/15/2007	5/15/2008	105F06
Whitehorse	YC64380	ANNA	469Donegal Dev.	5/15/2007	5/15/2008	105F06
Whitehorse	YC64381	ANNA	470Donegal Dev.	5/15/2007	5/15/2008	105F06
Whitehorse	YC64382	ANNA	471Donegal Dev.	5/15/2007	5/15/2008	105F06
Whitehorse	YC64383	ANNA	472Donegal Dev.	5/15/2007	5/15/2008	105F06
Whitehorse	YC64384	ANNA	473Donegal Dev.	5/15/2007	5/15/2008	105F06
Whitehorse	YC64385	ANNA	474Donegal Dev.	5/15/2007	5/15/2008	105F06
Whitehorse	YC64386	ANNA	475Donegal Dev.	5/15/2007	5/15/2008	105F06
Whitehorse	YC64387	ANNA	476Donegal Dev.	5/15/2007	5/15/2008	105F06
Whitehorse	YC64388	ANNA	477Donegal Dev.	5/15/2007	5/15/2008	105F06
Whitehorse	YC64389	ANNA	478Donegal Dev.	5/15/2007	5/15/2008	105F06
Whitehorse	YC64390	ANNA	479Donegal Dev.	5/15/2007	5/15/2008	105F06
Whitehorse	YC64391	ANNA	480Donegal Dev.	5/15/2007	5/15/2008	105F06
Whitehorse	YC64392	ANNA	481Donegal Dev.	5/15/2007	5/15/2008	105F06
Whitehorse	YC64393	ANNA	482Donegal Dev.	5/15/2007	5/15/2008	105F06
Whitehorse	YC64394	ANNA	483Donegal Dev.	5/15/2007	5/15/2008	105F06
Whitehorse	YC64395	ANNA	484Donegal Dev.	5/15/2007	5/15/2008	105F06
Whitehorse	YC64396	ANNA	485Donegal Dev.	5/15/2007	5/15/2008	105F06
Whitehorse	YC64397	ANNA	486Donegal Dev.	5/15/2007	5/15/2008	105F06
Whitehorse	YC64398	ANNA	487Donegal Dev.	5/15/2007	5/15/2008	105F06
Whitehorse	YC64399	ANNA	488Donegal Dev.	5/15/2007	5/15/2008	105F06
Whitehorse	YC64400	ANNA	489Donegal Dev.	5/15/2007	5/15/2008	105F06
Whitehorse	YC64401	ANNA	490Donegal Dev.	5/15/2007	5/15/2008	105F06
Whitehorse	YC64402	ANNA	491Donegal Dev.	5/15/2007	5/15/2008	105F06
Whitehorse	YC64403	ANNA	492Donegal Dev.	5/15/2007	5/15/2008	105F06
Whitehorse	YC64404	ANNA	493Donegal Dev.	5/15/2007	5/15/2008	105F06
Whitehorse	YC64405	ANNA	494Donegal Dev.	5/15/2007	5/15/2008	105F06
Whitehorse	YC64406	ANNA	495Donegal Dev.	5/15/2007	5/15/2008	105F06
Whitehorse	YC64407	ANNA	496Donegal Dev.	5/15/2007	5/15/2008	105F06
Whitehorse	YC64408	ANNA	497Donegal Dev.	5/15/2007	5/15/2008	105F06
Whitehorse	YC64409	ANNA	498Donegal Dev.	5/15/2007	5/15/2008	105F06
Whitehorse	YC64410	ANNA	499Donegal Dev.	5/15/2007	5/15/2008	105F06
Whitehorse	YC64411	ANNA	500Donegal Dev.	5/15/2007	5/15/2008	105F06
Whitehorse	YC64412	ANNA	501Donegal Dev.	5/15/2007	5/15/2008	105F06
Whitehorse	YC64413	ANNA	502Donegal Dev.	5/15/2007	5/15/2008	105F06
Whitehorse	YC64414	ANNA	503Donegal Dev.	5/15/2007	5/15/2008	105F06
Whitehorse	YC64415	ANNA	504Donegal Dev.	5/15/2007	5/15/2008	105F06
Whitehorse	YC64416	ANNA	505Donegal Dev.	5/15/2007	5/15/2008	105F06

Quiet Lake Nickel Project, YT – Magnetic Survey, September 2007

Whitehorse	YC64417	ANNA	506Donegal Dev.	5/15/2007	5/15/2008	105F06
Whitehorse	YC64418	ANNA	507Donegal Dev.	5/15/2007	5/15/2008	105F06
Whitehorse	YC64419	ANNA	508Donegal Dev.	5/15/2007	5/15/2008	105F06
Whitehorse	YC64420	ANNA	509Donegal Dev.	5/15/2007	5/15/2008	105F06
Whitehorse	YC64421	ANNA	510Donegal Dev.	5/15/2007	5/15/2008	105F06
Whitehorse	YC64422	ANNA	511Donegal Dev.	5/15/2007	5/15/2008	105F06
Whitehorse	YC64423	ANNA	512Donegal Dev.	5/15/2007	5/15/2008	105F06
Whitehorse	YC64424	ANNA	513Donegal Dev.	5/15/2007	5/15/2008	105F06
Whitehorse	YC64425	ANNA	514Donegal Dev.	5/15/2007	5/15/2008	105F06
Whitehorse	YC64426	ANNA	515Donegal Dev.	5/15/2007	5/15/2008	105F06
Whitehorse	YC64427	ANNA	516Donegal Dev.	5/15/2007	5/15/2008	105F06
Whitehorse	YC64428	ANNA	517Donegal Dev.	5/15/2007	5/15/2008	105F06
Whitehorse	YC64429	ANNA	518Donegal Dev.	5/15/2007	5/15/2008	105F06
Whitehorse	YC64430	ANNA	519Donegal Dev.	5/15/2007	5/15/2008	105F06
Whitehorse	YC64431	ANNA	520Donegal Dev.	5/15/2007	5/15/2008	105F06
Whitehorse	YC64432	ANNA	521Donegal Dev.	5/15/2007	5/15/2008	105F06
Whitehorse	YC64433	ANNA	522Donegal Dev.	5/15/2007	5/15/2008	105F06
Whitehorse	YC64434	ANNA	523Donegal Dev.	5/15/2007	5/15/2008	105F06
Whitehorse	YC64435	ANNA	524Donegal Dev.	5/15/2007	5/15/2008	105F06
Whitehorse	YC64436	ANNA	525Donegal Dev.	5/15/2007	5/15/2008	105F06
Whitehorse	YC64437	ANNA	526Donegal Dev.	5/15/2007	5/15/2008	105F06
Whitehorse	YC64438	ANNA	527Donegal Dev.	5/15/2007	5/15/2008	105F03
Whitehorse	YC64439	ANNA	528Donegal Dev.	5/15/2007	5/15/2008	105F06
Whitehorse	YC64440	ANNA	529Donegal Dev.	5/15/2007	5/15/2008	105F06
Whitehorse	YC64441	ANNA	530Donegal Dev.	5/15/2007	5/15/2008	105F06
Whitehorse	YC64442	ANNA	531Donegal Dev.	5/15/2007	5/15/2008	105F06
Whitehorse	YC64443	ANNA	532Donegal Dev.	5/15/2007	5/15/2008	105F06
Whitehorse	YC64444	ANNA	533Donegal Dev.	5/15/2007	5/15/2008	105F06
Whitehorse	YC64445	ANNA	534Donegal Dev.	5/15/2007	5/15/2008	105F06
Whitehorse	YC64446	ANNA	535Donegal Dev.	5/15/2007	5/15/2008	105F06
Whitehorse	YC64447	ANNA	536Donegal Dev.	5/15/2007	5/15/2008	105F06
Whitehorse	YC64448	ANNA	537Donegal Dev.	5/15/2007	5/15/2008	105F06
Whitehorse	YC64449	ANNA	538Donegal Dev.	5/15/2007	5/15/2008	105F06
Whitehorse	YC64450	ANNA	539Donegal Dev.	5/15/2007	5/15/2008	105F06
Whitehorse	YC64451	ANNA	540Donegal Dev.	5/15/2007	5/15/2008	105F06
Whitehorse	YC64452	ANNA	541Donegal Dev.	5/15/2007	5/15/2008	105F06
Whitehorse	YC64453	ANNA	542Donegal Dev.	5/15/2007	5/15/2008	105F06
Whitehorse	YC64454	ANNA	543Donegal Dev.	5/15/2007	5/15/2008	105F06
Whitehorse	YC64455	ANNA	544Donegal Dev.	5/15/2007	5/15/2008	105F06
Whitehorse	YC64456	ANNA	545Donegal Dev.	5/15/2007	5/15/2008	105F06
Whitehorse	YC64457	ANNA	546Donegal Dev.	5/15/2007	5/15/2008	105F06
Whitehorse	YC64458	ANNA	547Donegal Dev.	5/15/2007	5/15/2008	105F06
Whitehorse	YC64459	ANNA	548Donegal Dev.	5/15/2007	5/15/2008	105F06
Whitehorse	YC64460	ANNA	549Donegal Dev.	5/15/2007	5/15/2008	105F06

Quiet Lake Nickel Project, YT – Magnetic Survey, September 2007

Whitehorse	YC64461	ANNA	550Donegal Dev.	5/15/2007	5/15/2008	105F06
Whitehorse	YC64462	ANNA	551Donegal Dev.	5/15/2007	5/15/2008	105F06
Whitehorse	YC64463	ANNA	552Donegal Dev.	5/15/2007	5/15/2008	105F06
Whitehorse	YC64464	ANNA	553Donegal Dev.	5/15/2007	5/15/2008	105F06
Whitehorse	YC64465	ANNA	554Donegal Dev.	5/15/2007	5/15/2008	105F06
Whitehorse	YC64466	ANNA	555Donegal Dev.	5/15/2007	5/15/2008	105F06
Whitehorse	YC64467	ANNA	556Donegal Dev.	5/15/2007	5/15/2008	105F06
Whitehorse	YC64468	ANNA	557Donegal Dev.	5/15/2007	5/15/2008	105F06
Whitehorse	YC64469	ANNA	558Donegal Dev.	5/15/2007	5/15/2008	105F06
Whitehorse	YC64470	ANNA	559Donegal Dev.	5/15/2007	5/15/2008	105F06
Whitehorse	YC64471	ANNA	560Donegal Dev.	5/15/2007	5/15/2008	105F06
Whitehorse	YC64472	ANNA	561Donegal Dev.	5/15/2007	5/15/2008	105F06
Whitehorse	YC64473	ANNA	562Donegal Dev.	5/15/2007	5/15/2008	105F06
Whitehorse	YC64474	ANNA	563Donegal Dev.	5/15/2007	5/15/2008	105F06
Whitehorse	YC64475	ANNA	564Donegal Dev.	5/15/2007	5/15/2008	105F06
Whitehorse	YC64476	ANNA	565Donegal Dev.	5/15/2007	5/15/2008	105F06
Whitehorse	YC64477	ANNA	566Donegal Dev.	5/15/2007	5/15/2008	105F06
Whitehorse	YC64478	ANNA	567Donegal Dev.	5/15/2007	5/15/2008	105F06
Whitehorse	YC64479	ANNA	568Donegal Dev.	5/15/2007	5/15/2008	105F06
Whitehorse	YC64480	ANNA	569Donegal Dev.	5/15/2007	5/15/2008	105F06
Whitehorse	YC64481	ANNA	570Donegal Dev.	5/15/2007	5/15/2008	105F06
Whitehorse	YC64482	ANNA	571Donegal Dev.	5/15/2007	5/15/2008	105F06
Whitehorse	YC64483	ANNA	572Donegal Dev.	5/15/2007	5/15/2008	105F06
Whitehorse	YC64484	ANNA	573Donegal Dev.	5/15/2007	5/15/2008	105F03
Whitehorse	YC64485	ANNA	574Donegal Dev.	5/15/2007	5/15/2008	105F06
Whitehorse	YC64486	ANNA	575Donegal Dev.	5/15/2007	5/15/2008	105F03
Whitehorse	YC64487	ANNA	576Donegal Dev.	5/15/2007	5/15/2008	105F03
Whitehorse	YC64488	ANNA	577Donegal Dev.	5/15/2007	5/15/2008	105F06
Whitehorse	YC64489	ANNA	578Donegal Dev.	5/15/2007	5/15/2008	105F06
Whitehorse	YC64490	ANNA	579Donegal Dev.	5/15/2007	5/15/2008	105F06
Whitehorse	YC64491	ANNA	580Donegal Dev.	5/15/2007	5/15/2008	105F06
Whitehorse	YC64492	ANNA	581Donegal Dev.	5/15/2007	5/15/2008	105F06
Whitehorse	YC64493	ANNA	582Donegal Dev.	5/15/2007	5/15/2008	105F06
Whitehorse	YC64494	ANNA	583Donegal Dev.	5/15/2007	5/15/2008	105F06
Whitehorse	YC64495	ANNA	584Donegal Dev.	5/15/2007	5/15/2008	105F06
Whitehorse	YC64496	ANNA	585Donegal Dev.	5/15/2007	5/15/2008	105F06
Whitehorse	YC64497	ANNA	586Donegal Dev.	5/15/2007	5/15/2008	105F06
Whitehorse	YC64498	ANNA	587Donegal Dev.	5/15/2007	5/15/2008	105F06
Whitehorse	YC64499	ANNA	588Donegal Dev.	5/15/2007	5/15/2008	105F06
Whitehorse	YC64500	ANNA	589Donegal Dev.	5/15/2007	5/15/2008	105F06
Whitehorse	YC64501	ANNA	590Donegal Dev.	5/15/2007	5/15/2008	105F06
Whitehorse	YC64502	ANNA	591Donegal Dev.	5/15/2007	5/15/2008	105F06
Whitehorse	YC64503	ANNA	592Donegal Dev.	5/15/2007	5/15/2008	105F06
Whitehorse	YC64504	ANNA	593Donegal Dev.	5/15/2007	5/15/2008	105F06

Quiet Lake Nickel Project, YT – Magnetic Survey, September 2007

Whitehorse	YC64505	ANNA	594Donegal Dev.	5/15/2007	5/15/2008	105F06
Whitehorse	YC64506	ANNA	595Donegal Dev.	5/15/2007	5/15/2008	105F06
Whitehorse	YC64507	ANNA	596Donegal Dev.	5/15/2007	5/15/2008	105F06
Whitehorse	YC64508	ANNA	597Donegal Dev.	5/15/2007	5/15/2008	105F06
Whitehorse	YC64509	ANNA	598Donegal Dev.	5/15/2007	5/15/2008	105F06
Whitehorse	YC64510	ANNA	599Donegal Dev.	5/15/2007	5/15/2008	105F06
Whitehorse	YC64511	ANNA	600Donegal Dev.	5/15/2007	5/15/2008	105F06
Whitehorse	YC64512	ANNA	601Donegal Dev.	5/15/2007	5/15/2008	105F06
Whitehorse	YC64513	ANNA	602Donegal Dev.	5/15/2007	5/15/2008	105F06
Whitehorse	YC64514	ANNA	603Donegal Dev.	5/15/2007	5/15/2008	105F06
Whitehorse	YC64515	ANNA	604Donegal Dev.	5/15/2007	5/15/2008	105F06
Whitehorse	YC64516	ANNA	605Donegal Dev.	5/15/2007	5/15/2008	105F06
Whitehorse	YC64517	ANNA	606Donegal Dev.	5/15/2007	5/15/2008	105F06
Whitehorse	YC64518	ANNA	607Donegal Dev.	5/15/2007	5/15/2008	105F06
Whitehorse	YC64519	ANNA	608Donegal Dev.	5/15/2007	5/15/2008	105F06
Whitehorse	YC64520	ANNA	609Donegal Dev.	5/15/2007	5/15/2008	105F06
Whitehorse	YC64521	ANNA	610Donegal Dev.	5/15/2007	5/15/2008	105F06
Whitehorse	YC64522	ANNA	611Donegal Dev.	5/15/2007	5/15/2008	105F06
Whitehorse	YC64523	ANNA	612Donegal Dev.	5/15/2007	5/15/2008	105F06
Whitehorse	YC64524	ANNA	613Donegal Dev.	5/15/2007	5/15/2008	105F06
Whitehorse	YC64525	ANNA	614Donegal Dev.	5/15/2007	5/15/2008	105F06
Whitehorse	YC64526	ANNA	615Donegal Dev.	5/15/2007	5/15/2008	105F06
Whitehorse	YC64527	ANNA	616Donegal Dev.	5/15/2007	5/15/2008	105F06
Whitehorse	YC64528	ANNA	617Donegal Dev.	5/15/2007	5/15/2008	105F06
Whitehorse	YC64529	ANNA	618Donegal Dev.	5/15/2007	5/15/2008	105F06
Whitehorse	YC64530	ANNA	619Donegal Dev.	5/15/2007	5/15/2008	105F03
Whitehorse	YC64531	ANNA	620Donegal Dev.	5/15/2007	5/15/2008	105F06
Whitehorse	YC64532	ANNA	621Donegal Dev.	5/15/2007	5/15/2008	105F03
Whitehorse	YC64533	ANNA	622Donegal Dev.	5/15/2007	5/15/2008	105F03
Whitehorse	YC64534	ANNA	623Donegal Dev.	5/15/2007	5/15/2008	105F03
Whitehorse	YC64535	ANNA	624Donegal Dev.	5/15/2007	5/15/2008	105F03
Whitehorse	YC64536	ANNA	625Donegal Dev.	5/15/2007	5/15/2008	105F06
Whitehorse	YC64537	ANNA	626Donegal Dev.	5/15/2007	5/15/2008	105F06
Whitehorse	YC64538	ANNA	627Donegal Dev.	5/15/2007	5/15/2008	105F06
Whitehorse	YC64539	ANNA	628Donegal Dev.	5/15/2007	5/15/2008	105F06
Whitehorse	YC64540	ANNA	629Donegal Dev.	5/15/2007	5/15/2008	105F06
Whitehorse	YC64541	ANNA	630Donegal Dev.	5/15/2007	5/15/2008	105F06
Whitehorse	YC64542	ANNA	631Donegal Dev.	5/15/2007	5/15/2008	105F06
Whitehorse	YC64543	ANNA	632Donegal Dev.	5/15/2007	5/15/2008	105F06
Whitehorse	YC64544	ANNA	633Donegal Dev.	5/15/2007	5/15/2008	105F06
Whitehorse	YC64545	ANNA	634Donegal Dev.	5/15/2007	5/15/2008	105F06
Whitehorse	YC64546	ANNA	635Donegal Dev.	5/15/2007	5/15/2008	105F06
Whitehorse	YC64547	ANNA	636Donegal Dev.	5/15/2007	5/15/2008	105F06
Whitehorse	YC64548	ANNA	637Donegal Dev.	5/15/2007	5/15/2008	105F06

Quiet Lake Nickel Project, YT – Magnetic Survey, September 2007

Whitehorse	YC64549	ANNA	638Donegal Dev.	5/15/2007	5/15/2008	105F06
Whitehorse	YC64550	ANNA	639Donegal Dev.	5/15/2007	5/15/2008	105F06
Whitehorse	YC64551	ANNA	640Donegal Dev.	5/15/2007	5/15/2008	105F06
Whitehorse	YC64552	ANNA	641Donegal Dev.	5/15/2007	5/15/2008	105F06
Whitehorse	YC64553	ANNA	642Donegal Dev.	5/15/2007	5/15/2008	105F03
Whitehorse	YC64554	ANNA	643Donegal Dev.	5/15/2007	5/15/2008	105F06
Whitehorse	YC64555	ANNA	644Donegal Dev.	5/15/2007	5/15/2008	105F06
Whitehorse	YC64556	ANNA	645Donegal Dev.	5/15/2007	5/15/2008	105F06
Whitehorse	YC64557	ANNA	646Donegal Dev.	5/15/2007	5/15/2008	105F06
Whitehorse	YC64558	ANNA	647Donegal Dev.	5/15/2007	5/15/2008	105F06
Whitehorse	YC64559	ANNA	648Donegal Dev.	5/15/2007	5/15/2008	105F06
Whitehorse	YC64560	ANNA	649Donegal Dev.	5/15/2007	5/15/2008	105F06
Whitehorse	YC64561	ANNA	650Donegal Dev.	5/15/2007	5/15/2008	105F06
Whitehorse	YC64562	ANNA	653Donegal Dev.	5/15/2007	5/15/2008	105F06
Whitehorse	YC64563	ANNA	654Donegal Dev.	5/15/2007	5/15/2008	105F06
Whitehorse	YC64564	ANNA	655Donegal Dev.	5/15/2007	5/15/2008	105F06
Whitehorse	YC64565	ANNA	656Donegal Dev.	5/15/2007	5/15/2008	105F06
Whitehorse	YC64566	ANNA	657Donegal Dev.	5/15/2007	5/15/2008	105F06
Whitehorse	YC64567	ANNA	658Donegal Dev.	5/15/2007	5/15/2008	105F06
Whitehorse	YC64568	ANNA	659Donegal Dev.	5/15/2007	5/15/2008	105F06
Whitehorse	YC64569	ANNA	660Donegal Dev.	5/15/2007	5/15/2008	105F06
Whitehorse	YC64570	ANNA	661Donegal Dev.	5/15/2007	5/15/2008	105F06
Whitehorse	YC64571	ANNA	662Donegal Dev.	5/15/2007	5/15/2008	105F06
Whitehorse	YC64572	ANNA	663Donegal Dev.	5/15/2007	5/15/2008	105F06
Whitehorse	YC64573	ANNA	664Donegal Dev.	5/15/2007	5/15/2008	105F06
Whitehorse	YC64574	ANNA	665Donegal Dev.	5/15/2007	5/15/2008	105F03
Whitehorse	YC64575	ANNA	666Donegal Dev.	5/15/2007	5/15/2008	105F06
Whitehorse	YC64576	ANNA	667Donegal Dev.	5/15/2007	5/15/2008	105F03
Whitehorse	YC64577	ANNA	668Donegal Dev.	5/15/2007	5/15/2008	105F03
Whitehorse	YC64578	ANNA	669Donegal Dev.	5/15/2007	5/15/2008	105F06
Whitehorse	YC64579	ANNA	670Donegal Dev.	5/15/2007	5/15/2008	105F03
Whitehorse	YC64580	ANNA	671Donegal Dev.	5/15/2007	5/15/2008	105F03
Whitehorse	YC64581	ANNA	672Donegal Dev.	5/15/2007	5/15/2008	105F03
Whitehorse	YC64582	ANNA F	1296Donegal Dev.	5/15/2007	5/15/2008	105F06
Whitehorse	YC64583	ANNA	677Donegal Dev.	5/15/2007	5/15/2008	105F06
Whitehorse	YC64584	ANNA	678Donegal Dev.	5/15/2007	5/15/2008	105F06
Whitehorse	YC64585	ANNA	679Donegal Dev.	5/15/2007	5/15/2008	105F06
Whitehorse	YC64586	ANNA	680Donegal Dev.	5/15/2007	5/15/2008	105F06
Whitehorse	YC64587	ANNA	681Donegal Dev.	5/15/2007	5/15/2008	105F06
Whitehorse	YC64588	ANNA	682Donegal Dev.	5/15/2007	5/15/2008	105F06
Whitehorse	YC64589	ANNA	683Donegal Dev.	5/15/2007	5/15/2008	105F06
Whitehorse	YC64590	ANNA	684Donegal Dev.	5/15/2007	5/15/2008	105F06
Whitehorse	YC64591	ANNA	685Donegal Dev.	5/15/2007	5/15/2008	105F06
Whitehorse	YC64592	ANNA	686Donegal Dev.	5/15/2007	5/15/2008	105F06

Quiet Lake Nickel Project, YT – Magnetic Survey, September 2007

Whitehorse	YC64593	ANNA	687Donegal Dev.	5/11/2007	5/11/2008	105F06
Whitehorse	YC64594	ANNA	688Donegal Dev.	5/11/2007	5/11/2008	105F06
Whitehorse	YC64595	ANNA	689Donegal Dev.	5/11/2007	5/11/2008	105F06
Whitehorse	YC64596	ANNA	690Donegal Dev.	5/11/2007	5/11/2008	105F06
Whitehorse	YC64597	ANNA	691Donegal Dev.	5/11/2007	5/11/2008	105F06
Whitehorse	YC64598	ANNA	692Donegal Dev.	5/11/2007	5/11/2008	105F06
Whitehorse	YC64599	ANNA	693Donegal Dev.	5/11/2007	5/11/2008	105F06
Whitehorse	YC64600	ANNA	694Donegal Dev.	5/11/2007	5/11/2008	105F06
Whitehorse	YC64601	ANNA	695Donegal Dev.	5/11/2007	5/11/2008	105F06
Whitehorse	YC64602	ANNA	696Donegal Dev.	5/11/2007	5/11/2008	105F06
Whitehorse	YC64603	ANNA	697Donegal Dev.	5/11/2007	5/11/2008	105F06
Whitehorse	YC64604	ANNA	698Donegal Dev.	5/11/2007	5/11/2008	105F06
Whitehorse	YC64605	ANNA	699Donegal Dev.	5/11/2007	5/11/2008	105F06
Whitehorse	YC64606	ANNA	700Donegal Dev.	5/11/2007	5/11/2008	105F06
Whitehorse	YC64607	ANNA	701Donegal Dev.	5/11/2007	5/11/2008	105F06
Whitehorse	YC64608	ANNA	702Donegal Dev.	5/11/2007	5/11/2008	105F06
Whitehorse	YC64609	ANNA	703Donegal Dev.	5/15/2007	5/15/2008	105F06
Whitehorse	YC64610	ANNA	704Donegal Dev.	5/15/2007	5/15/2008	105F06
Whitehorse	YC64611	ANNA	705Donegal Dev.	5/15/2007	5/15/2008	105F06
Whitehorse	YC64612	ANNA	706Donegal Dev.	5/15/2007	5/15/2008	105F06
Whitehorse	YC64613	ANNA	707Donegal Dev.	5/15/2007	5/15/2008	105F06
Whitehorse	YC64614	ANNA	708Donegal Dev.	5/15/2007	5/15/2008	105F06
Whitehorse	YC64615	ANNA	709Donegal Dev.	5/15/2007	5/15/2008	105F06
Whitehorse	YC64616	ANNA	710Donegal Dev.	5/15/2007	5/15/2008	105F06
Whitehorse	YC64617	ANNA	711Donegal Dev.	5/15/2007	5/15/2008	105F06
Whitehorse	YC64618	ANNA	712Donegal Dev.	5/15/2007	5/15/2008	105F06
Whitehorse	YC64619	ANNA	713Donegal Dev.	5/15/2007	5/15/2008	105F03
Whitehorse	YC64620	ANNA	714Donegal Dev.	5/15/2007	5/15/2008	105F06
Whitehorse	YC64621	ANNA	715Donegal Dev.	5/15/2007	5/15/2008	105F03
Whitehorse	YC64622	ANNA	716Donegal Dev.	5/15/2007	5/15/2008	105F03
Whitehorse	YC64623	ANNA	717Donegal Dev.	5/15/2007	5/15/2008	105F03
Whitehorse	YC64624	ANNA	718Donegal Dev.	5/15/2007	5/15/2008	105F03
Whitehorse	YC64625	ANNA	719Donegal Dev.	5/15/2007	5/15/2008	105F03
Whitehorse	YC64626	ANNA	720Donegal Dev.	5/15/2007	5/15/2008	105F03
Whitehorse	YC64627	ANNA	721Donegal Dev.	5/15/2007	5/15/2008	105F03
Whitehorse	YC64628	ANNA	722Donegal Dev.	5/15/2007	5/15/2008	105F03
Whitehorse	YC64629	ANNA	739Donegal Dev.	5/15/2007	5/15/2008	105F06
Whitehorse	YC64630	ANNA	740Donegal Dev.	5/15/2007	5/15/2008	105F06
Whitehorse	YC64631	ANNA	741Donegal Dev.	5/15/2007	5/15/2008	105F06
Whitehorse	YC64632	ANNA	742Donegal Dev.	5/15/2007	5/15/2008	105F06
Whitehorse	YC64633	ANNA	743Donegal Dev.	5/15/2007	5/15/2008	105F06
Whitehorse	YC64634	ANNA	744Donegal Dev.	5/15/2007	5/15/2008	105F06
Whitehorse	YC64635	ANNA	745Donegal Dev.	5/15/2007	5/15/2008	105F06
Whitehorse	YC64636	ANNA	746Donegal Dev.	5/15/2007	5/15/2008	105F06

Quiet Lake Nickel Project, YT – Magnetic Survey, September 2007

Whitehorse	YC64637	ANNA	747Donegal Dev.	5/15/2007	5/15/2008	105F06
Whitehorse	YC64638	ANNA	748Donegal Dev.	5/15/2007	5/15/2008	105F06
Whitehorse	YC64639	ANNA	749Donegal Dev.	5/15/2007	5/15/2008	105F06
Whitehorse	YC64640	ANNA	750Donegal Dev.	5/15/2007	5/15/2008	105F06
Whitehorse	YC64641	ANNA	751Donegal Dev.	5/15/2007	5/15/2008	105F06
Whitehorse	YC64642	ANNA	752Donegal Dev.	5/15/2007	5/15/2008	105F06
Whitehorse	YC64643	ANNA	753Donegal Dev.	5/15/2007	5/15/2008	105F06
Whitehorse	YC64644	ANNA	754Donegal Dev.	5/15/2007	5/15/2008	105F06
Whitehorse	YC64645	ANNA	755Donegal Dev.	5/15/2007	5/15/2008	105F06
Whitehorse	YC64646	ANNA	756Donegal Dev.	5/15/2007	5/15/2008	105F06
Whitehorse	YC64647	ANNA	757Donegal Dev.	5/15/2007	5/15/2008	105F06
Whitehorse	YC64648	ANNA	758Donegal Dev.	5/15/2007	5/15/2008	105F06
Whitehorse	YC64649	ANNA	1305Donegal Dev.	5/15/2007	5/15/2008	105F06
Whitehorse	YC64650	ANNA	759Donegal Dev.	5/15/2007	5/15/2008	105F06
Whitehorse	YC64651	ANNA	760Donegal Dev.	5/15/2007	5/15/2008	105F06
Whitehorse	YC64652	ANNA	761Donegal Dev.	5/15/2007	5/15/2008	105F03
Whitehorse	YC64653	ANNA	762Donegal Dev.	5/15/2007	5/15/2008	105F06
Whitehorse	YC64654	ANNA	763Donegal Dev.	5/15/2007	5/15/2008	105F03
Whitehorse	YC64655	ANNA	764Donegal Dev.	5/15/2007	5/15/2008	105F03
Whitehorse	YC64656	ANNA	765Donegal Dev.	5/15/2007	5/15/2008	105F03
Whitehorse	YC64657	ANNA	766Donegal Dev.	5/15/2007	5/15/2008	105F03
Whitehorse	YC64658	ANNA	767Donegal Dev.	5/15/2007	5/15/2008	105F03
Whitehorse	YC64659	ANNA	768Donegal Dev.	5/15/2007	5/15/2008	105F03
Whitehorse	YC64660	ANNA	769Donegal Dev.	5/15/2007	5/15/2008	105F03
Whitehorse	YC64661	ANNA	770Donegal Dev.	5/15/2007	5/15/2008	105F03
Whitehorse	YC64662	ANNA	771Donegal Dev.	5/15/2007	5/15/2008	105F03
Whitehorse	YC64663	ANNA	772Donegal Dev.	5/15/2007	5/15/2008	105F03
Whitehorse	YC64664	ANNA	794Donegal Dev.	5/15/2007	5/15/2008	105F06
Whitehorse	YC64665	ANNA	796Donegal Dev.	5/15/2007	5/15/2008	105F06
Whitehorse	YC64666	ANNA	798Donegal Dev.	5/15/2007	5/15/2008	105F06
Whitehorse	YC64667	ANNA	799Donegal Dev.	5/15/2007	5/15/2008	105F06
Whitehorse	YC64668	ANNA	800Donegal Dev.	5/15/2007	5/15/2008	105F06
Whitehorse	YC64669	ANNA	801Donegal Dev.	5/15/2007	5/15/2008	105F06
Whitehorse	YC64670	ANNA	802Donegal Dev.	5/15/2007	5/15/2008	105F06
Whitehorse	YC64671	ANNA	803Donegal Dev.	5/15/2007	5/15/2008	105F06
Whitehorse	YC64672	ANNA	804Donegal Dev.	5/15/2007	5/15/2008	105F06
Whitehorse	YC64673	ANNA	805Donegal Dev.	5/15/2007	5/15/2008	105F06
Whitehorse	YC64674	ANNA	806Donegal Dev.	5/15/2007	5/15/2008	105F06
Whitehorse	YC64675	ANNA	807Donegal Dev.	5/15/2007	5/15/2008	105F06
Whitehorse	YC64676	ANNA	808Donegal Dev.	5/15/2007	5/15/2008	105F06
Whitehorse	YC64677	ANNA	809Donegal Dev.	5/15/2007	5/15/2008	105F03
Whitehorse	YC64678	ANNA	810Donegal Dev.	5/15/2007	5/15/2008	105F06
Whitehorse	YC64679	ANNA	811Donegal Dev.	5/15/2007	5/15/2008	105F03
Whitehorse	YC64680	ANNA	812Donegal Dev.	5/15/2007	5/15/2008	105F03

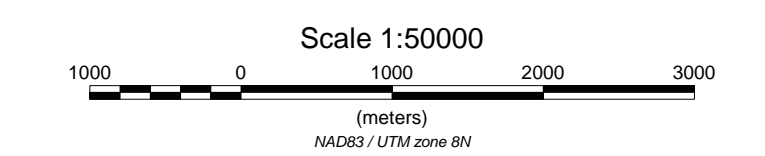
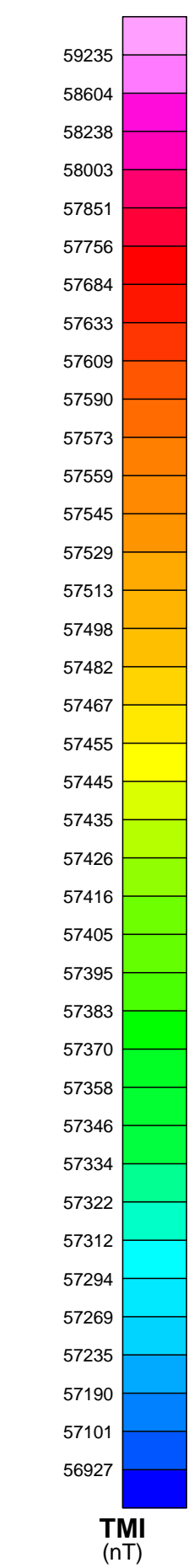
Quiet Lake Nickel Project, YT – Magnetic Survey, September 2007

Whitehorse	YC64681	ANNA	813Donegal Dev.	5/15/2007	5/15/2008	105F03
Whitehorse	YC64682	ANNA	814Donegal Dev.	5/15/2007	5/15/2008	105F03
Whitehorse	YC64683	ANNA	1309Donegal Dev.	5/15/2007	5/15/2008	105F06
Whitehorse	YC64684	ANNA	1310Donegal Dev.	5/15/2007	5/15/2008	105F06
Whitehorse	YC64685	ANNA	1311Donegal Dev.	5/15/2007	5/15/2008	105F06
Whitehorse	YC64686	ANNA	1312Donegal Dev.	5/15/2007	5/15/2008	105F06
Whitehorse	YC64687	ANNA	847Donegal Dev.	5/15/2007	5/15/2008	105F06
Whitehorse	YC64688	ANNA	848Donegal Dev.	5/15/2007	5/15/2008	105F06
Whitehorse	YC64689	ANNA	849Donegal Dev.	5/15/2007	5/15/2008	105F03
Whitehorse	YC64690	ANNA	850Donegal Dev.	5/15/2007	5/15/2008	105F06
Whitehorse	YC64691	ANNA	851Donegal Dev.	5/15/2007	5/15/2008	105F03
Whitehorse	YC64692	ANNA	852Donegal Dev.	5/15/2007	5/15/2008	105F03
Whitehorse	YC64693	ANNA	853Donegal Dev.	5/15/2007	5/15/2008	105F03
Whitehorse	YC64694	ANNA	854Donegal Dev.	5/15/2007	5/15/2008	105F03
Whitehorse	YC64695	ANNA	855Donegal Dev.	5/15/2007	5/15/2008	105F03
Whitehorse	YC64696	ANNA	856Donegal Dev.	5/15/2007	5/15/2008	105F03
Whitehorse	YC64697	ANNA	1317Donegal Dev.	5/15/2007	5/15/2008	105F06
Whitehorse	YC64698	ANNA	1350Donegal Dev.	5/15/2007	5/15/2008	105F03
Whitehorse	YC64699	ANNA F	1321Donegal Dev.	5/15/2007	5/15/2008	105F03
Whitehorse	YC64700	ANNA F	1314Donegal Dev.	5/15/2007	5/15/2008	105F06
Whitehorse	YC64701	ANNA F	1315Donegal Dev.	5/15/2007	5/15/2008	105F06
Whitehorse	YC64702	ANNA F	1316Donegal Dev.	5/15/2007	5/15/2008	105F06
Whitehorse	YC64703	ANNA	1293Donegal Dev.	5/15/2007	5/15/2008	105F06
Whitehorse	YC64704	ANNA F	1294Donegal Dev.	5/15/2007	5/15/2008	105F06
Whitehorse	YC64705	ANNA	1295Donegal Dev.	5/15/2007	5/15/2008	105F06
Whitehorse	YC64706	ANNA F	1298Donegal Dev.	5/15/2007	5/15/2008	105F06
Whitehorse	YC64707	ANNA F	1299Donegal Dev.	5/15/2007	5/15/2008	105F06
Whitehorse	YC64708	ANNA F	1300Donegal Dev.	5/18/2007	5/18/2008	105F06
Whitehorse	YC64709	ANNA F	1301Donegal Dev.	5/18/2007	5/18/2008	105F06
Whitehorse	YC64710	ANNA F	1302Donegal Dev.	5/18/2007	5/18/2008	105F06
Whitehorse	YC64711	ANNA F	1308Donegal Dev.	5/18/2007	5/18/2008	105F06
Whitehorse	YC64712	ANNA F	1303Donegal Dev.	5/18/2007	5/18/2008	105F06
Whitehorse	YC64713	ANNA F	1304Donegal Dev.	5/18/2007	5/18/2008	105F06

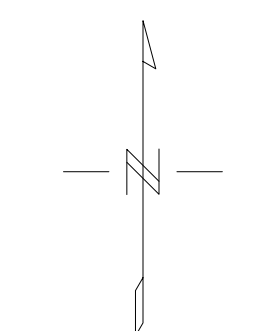
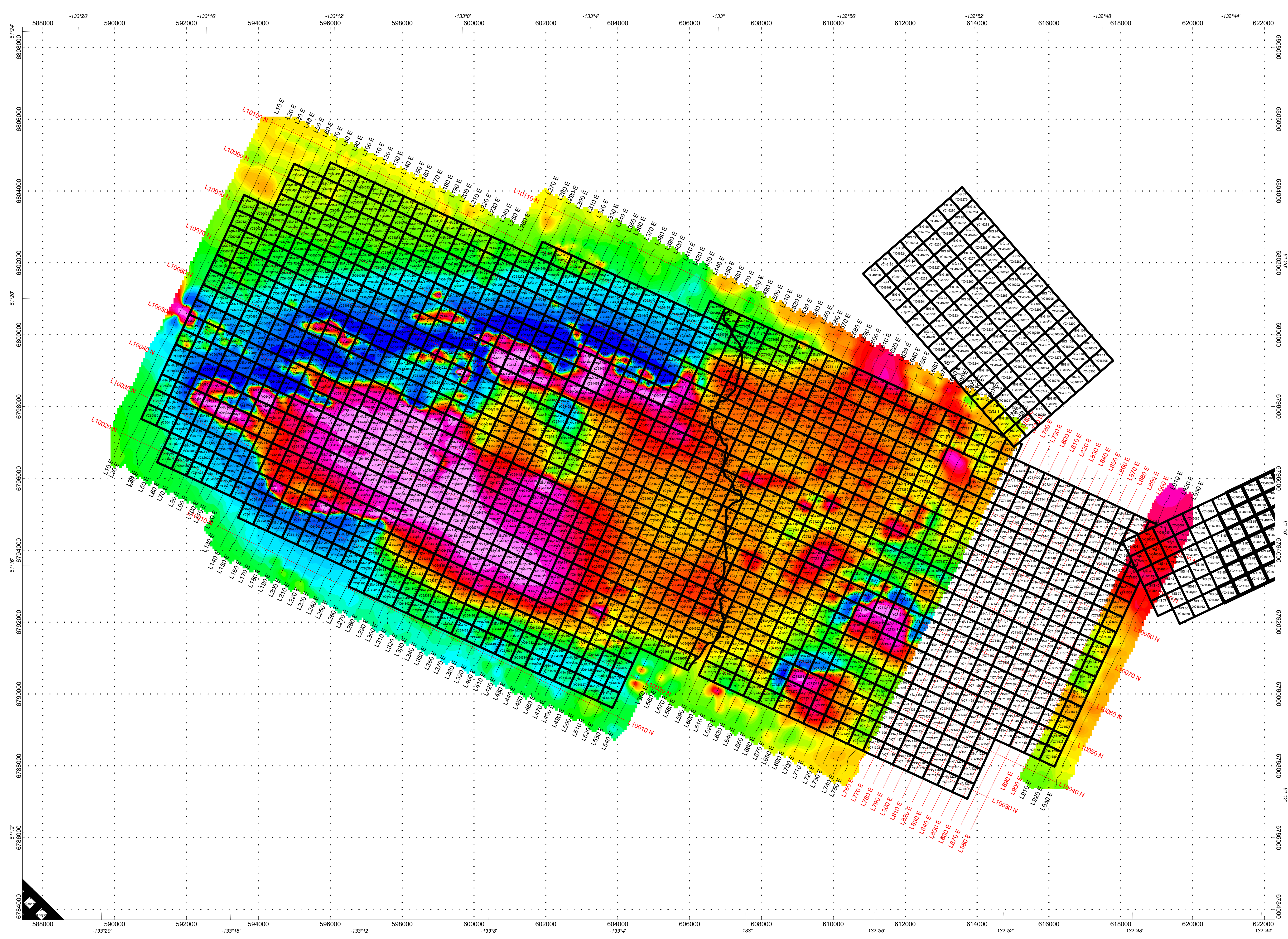
INSTRUMENTATION:
 Spectrometer: GRS10-256/ 16.81 up/4.21 down
 Magnetometer: MMS-4/ CS-3 Cesium
 DAS: AGIS-XP
 Navigation: GPS CSI
 Radar Altimeter: TRA3000
 Temperature/Humidity: HC-S3
 Barometer: Setra M276
 Magnetic Base Station: PGIS/ CS-3 Cesium

SPECIFICATIONS:
 MTC: 50 m
 Line Interval: 300m
 Tie Line Interval 1200m
 Magnetometer Noise: less than 1.0 nT
 Spectrometer: Internal calibration/ Sample calibrated (U)

CORRECTIONS:
 Diurnal Variation
 Lag Corrections
 Heading Corrections
 Tie Line Corrections
 Microlevelling



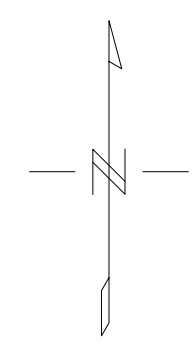
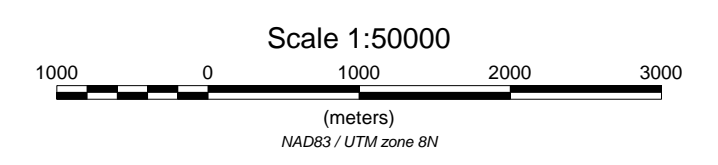
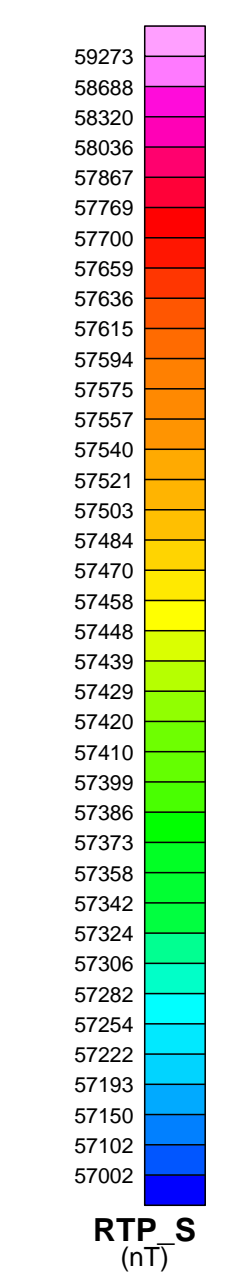
IT'S YOUR NICKEL EXPLORATION LTD.
ANNA BLOCK, TURN RIVER PROJECT, YT
TOTAL MAGNETIC INTENSITY MAP (nT)
MAP 1
 Magnetic Declination: 24 Degrees
 Magnetic Inclination: 77 Degrees
 Donegal Developments Ltd., Vancouver, B.C.



INSTRUMENTATION:
 Spectrometer: GRS10-256/ 16.81 up/4.21 down
 Magnetometer: MMS-4/ CS-3 Cesium
 DAS: AGIS-XP
 Navigation: GPS CSI
 Radar Altimeter: TRA3000
 Temperature/Humidity: HC-S3
 Barometer: Setra M276
 Magnetic Base Station: PGIS/ CS-3 Cesium

SPECIFICATIONS:
 MTC: 50 m
 Line Interval: 300m
 Tie Line Interval 1200m
 Magnetometer Noise: less than 1.0 nT
 Spectrometer: Internal calibration/ Sample calibrated (U)

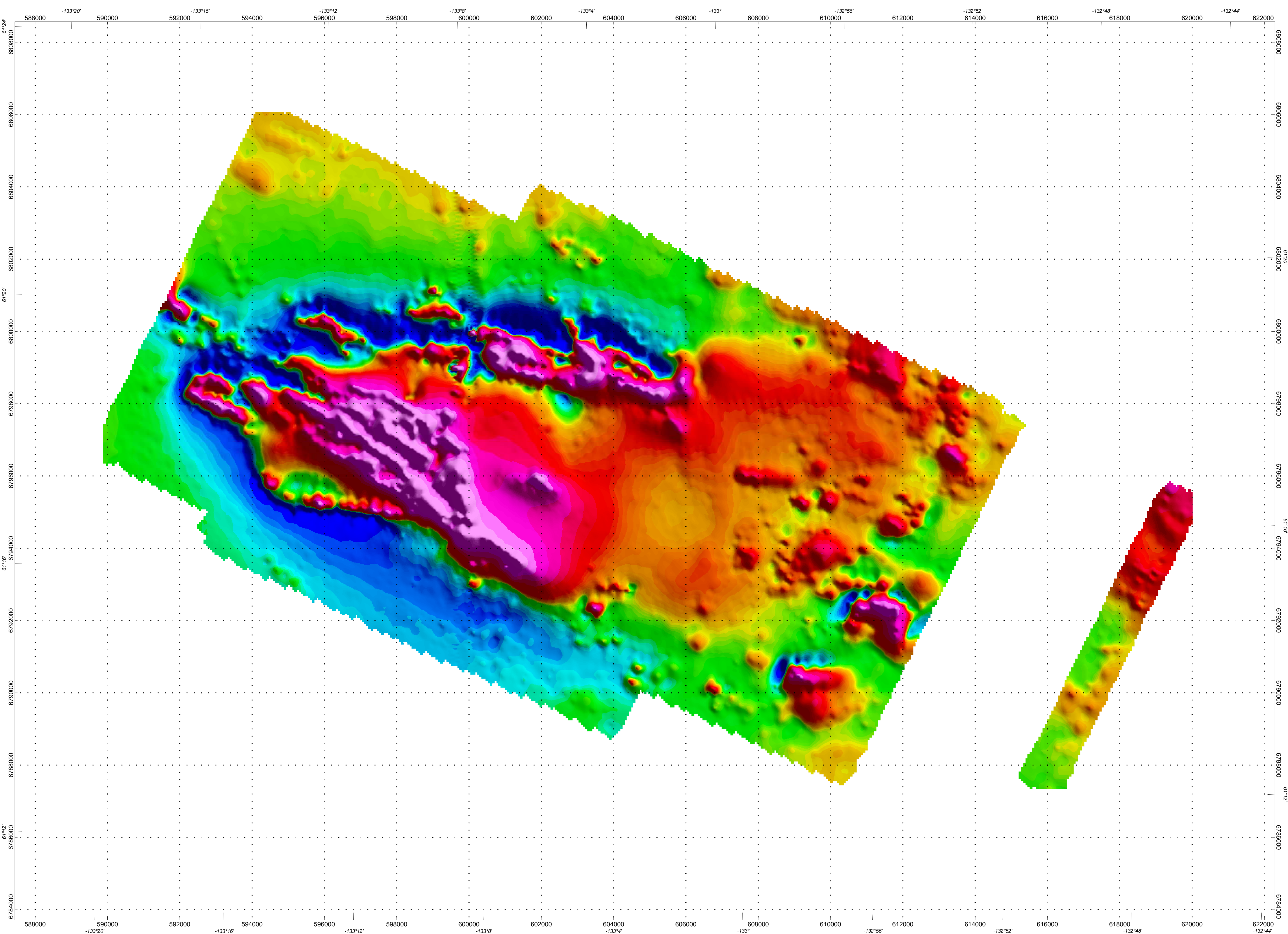
CORRECTIONS
 Diurnal Variation
 Lag Corrections
 Heading Corrections
 Tie Line Corrections
 Microlevelling



IT'S YOUR NICKEL EXPLORATION LTD.
ANNA BLOCK, TURN RIVER PROJECT, YT
REDUCED TO POLE SHADED MAP (nT)
MAP 2

Magnetic Declination: 24 Degrees
 Magnetic Inclination: 77 Degrees

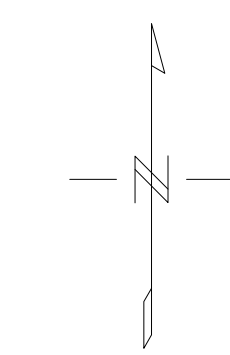
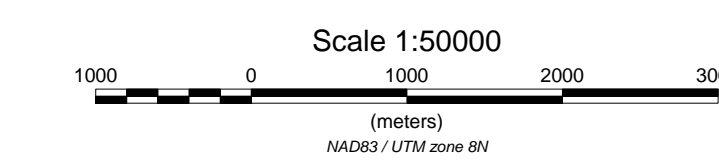
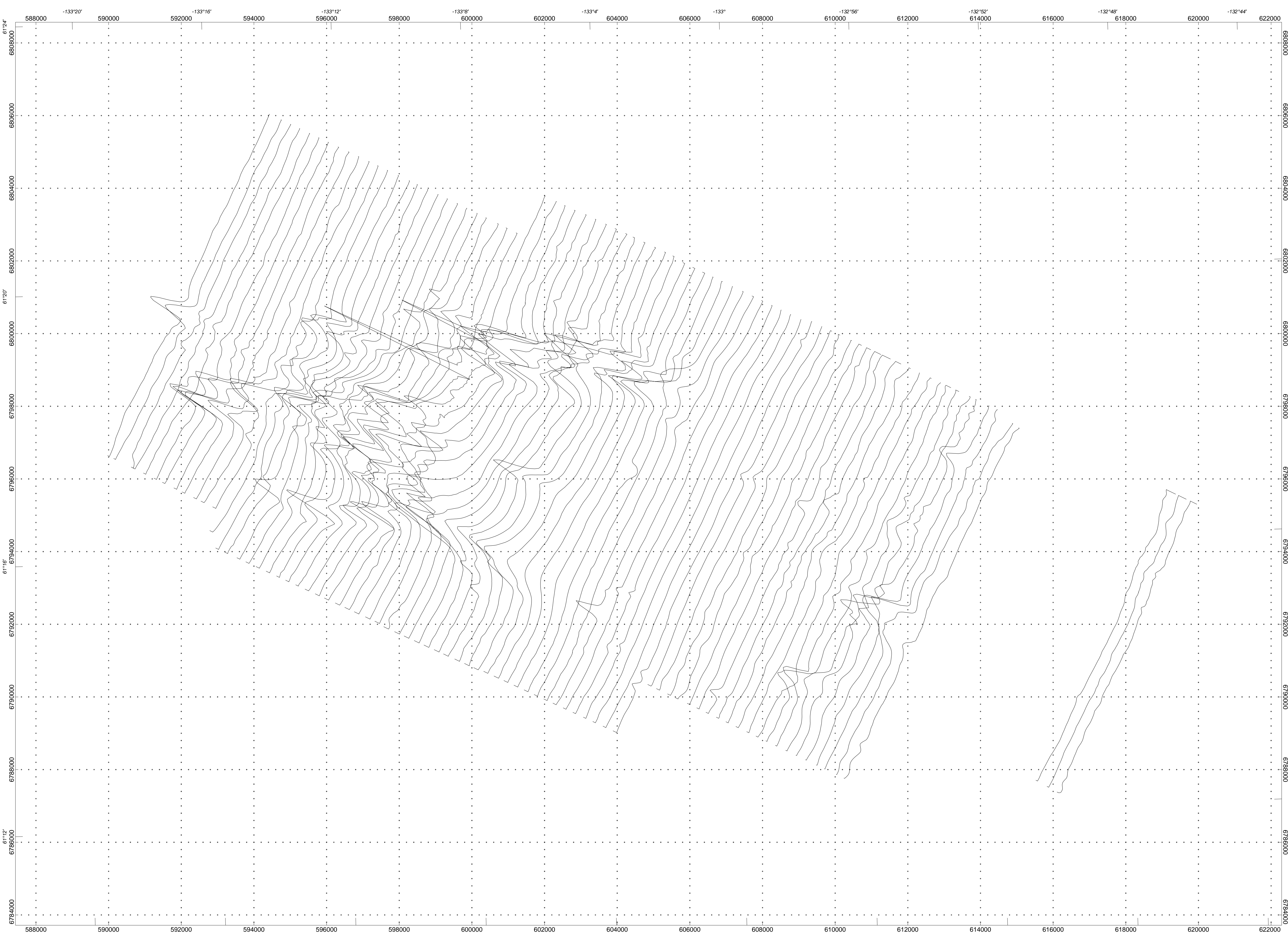
Donegal Developments Ltd., Vancouver, B.C.



INSTRUMENTATION:
Spectrometer: GRS10-256/ 16.8 1 up/4.2 1 down
Magnetometer: MMS-4/ CS-3 Cesium
DAS: AGIS-XP
Navigation: GPS CSI
Radar Altimeter: TRA3000
Temperature/Humidity: HC-S3
Barometer: Setra M276
Magnetic Base Station: PGIS/ CS-3 Cesium

SPECIFICATIONS:
MTC: 50 m
Line Interval: 300m
Tie Line Interval 1200m
Magnetometer Noise: less than 1.0 nT
Spectrometer: Internal calibration/ Sample calibrated (U)

CORRECTIONS
Diurnal Variation
Lag Corrections
Heading Corrections
Tie Line Corrections
Microlevelling



<p>ITS YOUR NICKEL EXPLORATION LTD. ANNA BLOCK, TURN RIVER PROJECT, YT PROFILES OF RTP MAGNETIC FIELD(nT) MAP 3</p> <p>Base Level: 57500 nT Vertical Scale: 100 nT/mm</p> <p>Donegal Developments Ltd., Vancouver, B.C.</p>
--