

094734

**REPORT ON THE
2006 MAGNETIC FIELD SURVEY
on the TYPHOON PROPERTY**

CLEAR CREEK AREA, YUKON

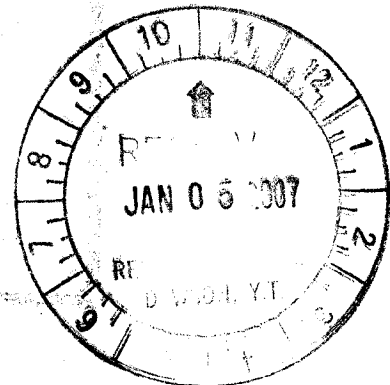
On Quartz claims:

Claim	Grant #
Bell 10 - 24	YC20885 - YC20899
Blue 1 - 4	YC21554 - YC21557
Wind 1 - 3	YC28846 - YC28848
Zephyr 1 - 3	YC28849 - YC28851
Storm 1 - 3	YC28852 - YC28854
Gale 1 - 3	YC28855 - YC28857
Breeze 1 - 8	YC34617 - YC34624
Blizzard 1 - 16	YC35578 - YC35593
Squall 1 - 62	YC36582 - YC36643

For work performed
June 30 to July 9, 2006

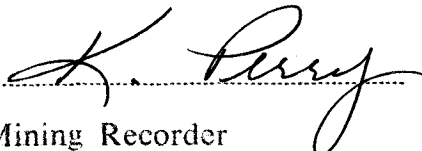
For
Curlew Lake Resources Ltd
Suite 104, 20641 Logan Avenue
Langley, BC, V3A 7R3

Report By
Scott Casselman B.Sc, P. Geo.
Aurora Geosciences Ltd
108 Gold Road
Whitehorse, Yukon, Y1A 2W3



Location: Latitude 63° 49' 38"N, Longitude 137° 20' 44"W
Mining District: Dawson
NTS: 115P/14
Date: January 4, 2007

Costs associated with this report have been
approved in the amount of \$ 13,600
for assessment credit under Certificate of
Work No. 200799



Mining Recorder
Dawson City Mining District

094734

This report has been examined by the Geological Evaluation Unit under Section 53 (4) Yukon Quartz Mining Act and is allowed as representation work in the amount of \$ 13,600.

M. Buh
for Regional Manager, Exploration and Geological Services for Commissioner of Yukon Territory.



SUMMARY

Curlew Lake Resources Ltd contracted Aurora Geosciences Ltd to conduct an exploration program on the Typhoon Property in the Clear Creek area, Yukon, during the summer of 2006. The program consisted of a ground magnetic survey on a portion of the property. Late in the season Curlew Lake attempted to conduct a soil sample survey however the crew was too late and the area was covered in snow.

Following the 2006 exploration program Curlew Lake signed an option agreement with Mr. Robert Adamson, for the some of the Blue and Bell claims adjoining the Typhoon property on its western margin. This report documents the work conducted by Aurora Geosciences Ltd and includes data from magnetic surveys and soil geochemical surveys on the Typhoon Property, the newly acquired claims and a review of historical exploration work conducted in the area by other operators.

The Typhoon Property lies within the "Tintina Gold Belt" a region that has many intrusion-related gold occurrences and some significant gold deposits. Clear Creek has had historic placer gold production within 6 km of the property. Outcrop exposure on the property is limited.

Aurora provided a crew of two persons to conduct the exploration program. The crew conducted a total magnetic field survey using a hand-held GPS for guidance. A grid was not established on the property. Line spacing was 100 m (nominally) and magnetic field measurements were taken at 12.5 m intervals. The magnetic survey covered 33.6 line km.

The magnetic survey identified a large magnetic high centred over the western part of the property with a series to three isolated smaller magnetic highs tailing-off to the east. These features appear to represent buried intrusive bodies. Soil geochemical surveys conducted previously on the property returned scattered anomalous gold values up to 342 ppb gold in the eastern part of the property. These values are considered significant for the region.

Recommendations for future work on the property are to:

- 1 Expand the magnetic survey to cover the remainder of the property.
- 2 Prospecting and geological mapping.
- 3 An IP geophysical survey consisting of a few lines over the magnetic highs on the western part of the property and in the area of high gold-in-soil geochemistry.
- 4 Soil sampling over the complete property with 200 m line spacing and 50 m station spacing and in the central portion of the property at 100 m line-spacing and 25 m station spacing.
- 5 To be followed by approximately 1000 m of diamond drilling to test the magnetic highs and any other anomalies identified by the IP survey

An estimated budget for this program is \$350,000.

TABLE OF CONTENTS

	Summary	
1.0	Introduction	1
2.0	Property Location and Access	1
3.0	Claim Information.....	3
4.0	Physiography and Climate	3
5.0	History.....	5
6.0	Regional Geological Setting.....	6
7.0	2006 Exploration Program	9
8.0	Conclusions and Recommendations.....	10
9.0	Statement of Expenditures.....	11
10.0	References	12

Figures

1	Property Location Map.....	2
2	Claim Map.....	4
3	Regional Geology Map	8
4	Shaded Relief Total Magnetic Field Map	In Pocket
5	Soil Sample Dot Plot for Gold (ppb).....	In Pocket

Appendices

Appendix I	Statement of Qualifications
Appendix II	Crew Log
Appendix III	Claim Data

1.0 INTRODUCTION

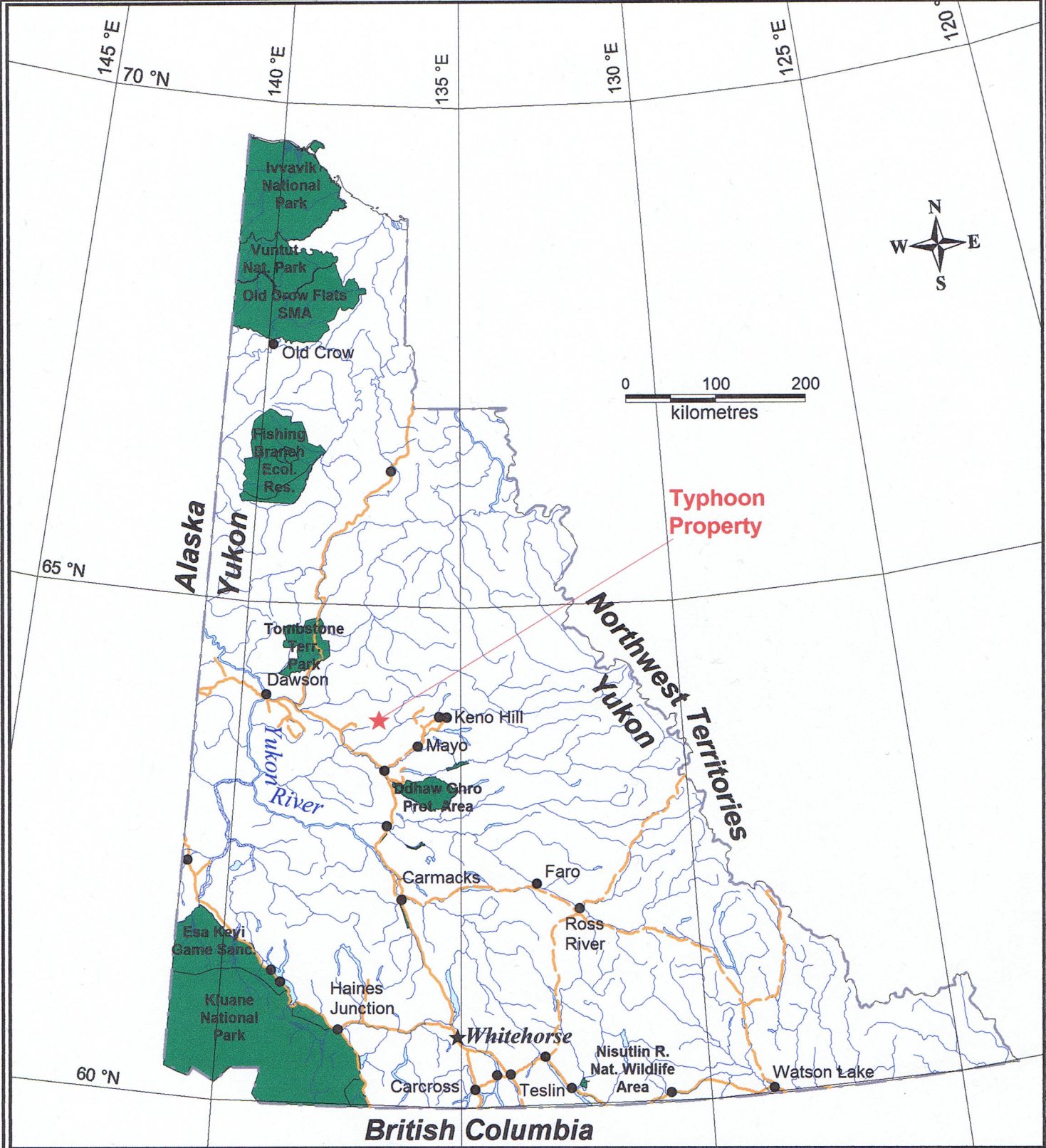
Curlew Lake Resources Ltd contracted Aurora Geosciences Ltd to conduct a ground magnetic survey on the Typhoon Property in the Clear Creek area, Yukon, during the summer of 2006. Aurora provided a crew of two persons consisting of Gabe Fortin (geologist) and Cody Woodman (field assistant). The crew mobilized from Whitehorse to the area June 30, 2006 and had some difficulties locating the access road. They made it to the property area the following day. During this period the crew was also working on other claims for other companies. The crew conducted the magnetic survey on the Typhoon Property on July 2 through 8 and demobilized from the area on July 9. All expenditures for work in the area are pro-rated amongst the various projects based on amount of time worked on each project.

This report documents the work conducted by Aurora Geosciences Ltd in 2006 and includes a review of historical exploration work conducted in the area by other operators. The author is a professional geologist and supervised the field crew. The author has not set foot on the property. The author has relied on data, interpretation, and information supplied by others noted above and listed in the References: primarily assessment reports on record with the Yukon Territorial Government (previously federal Department of Indian and Northern Affairs).

2.0 PROPERTY LOCATION AND ACCESS

The Typhoon Property is located 360 km north of Whitehorse or 75 km west-northwest of Mayo, Yukon. The claims are on Squaw Creek, a small tributary of Clear Creek on NTS map sheet 115P/14 and are centred at 63° 49' 38" latitude and 137° 20' 44" longitude (Figure 1).

The project area is accessible by the Barlow Dome Road, a narrow gravel road that runs along the ridge on the north side of Clear Creek from the North Klondike Highway near Barlow Lake, for approximately 20 km to the property area.



PROFESSIONAL
 January 4, 2007
 G. CASTELMA
 BRITISH COLUMBIA
 G.

CURLEW LAKE RESOURCES LTD
TYPHOON PROPERTY
Figure 1 - Location Map

December 31, 2006

3.0 CLAIM INFORMATION

At the beginning of 2006, the Typhoon Property consisted 98 quartz claims. Following the exploration program on the property in the summer of 2006, Curlew Lake signed and option agreement with Mr. Robert Adamson to acquire 19 Blue and Bell quartz claims immediately adjoining the Typhoon Property to the west. All claims are located on NTS sheet 115P/14 and are in the Dawson Mining District. The claims are plotted on Figure 2. Claim information is included in Appendix III.

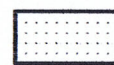
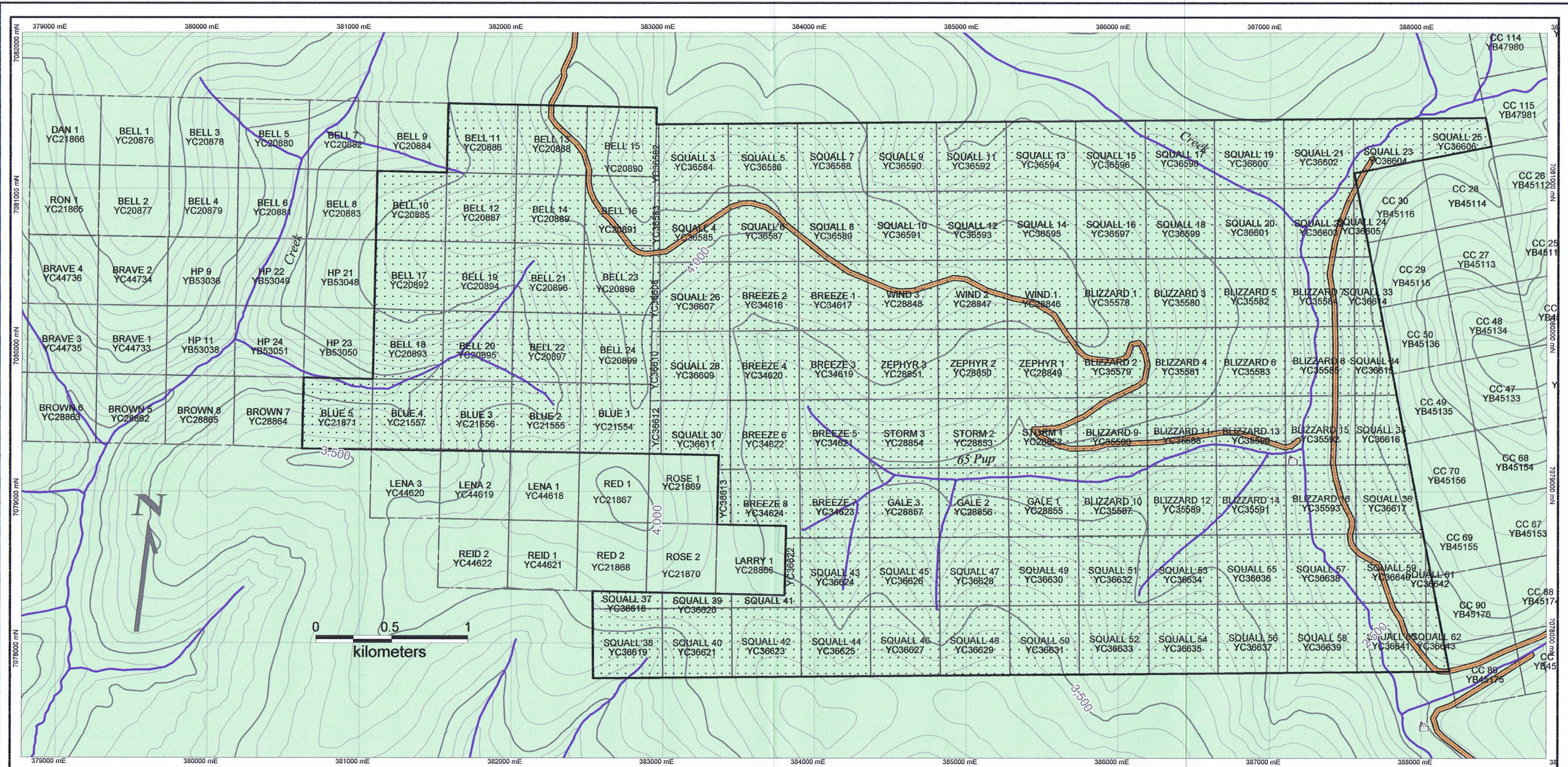
The claims are in good standing with expiry dates as listed in the claim information. For claims on which the 2006 exploration work was applied, the expiry date is based on this exploration work being accepted for assessment credits. The earliest expiry date on any of these claims is July 7, 2007.

4.0 PHYSIOGRAPHY AND CLIMATE

The project area is in the Syenite Range Mountains on the north side of the Tintina Trench. The property covers a ridge in gentle rounded mountainous terrain. Elevations range from about 2000 feet to 4000 feet above sea level. The property area is sparsely treed, with spruce, pine, birch, alder, and locally with considerable buck brush.

The area experiences cold dry winters and hot dry summers. Snow usually begins accumulating in late September or early October and is generally melted by late May to early June. Temperatures range from highs in the mid 30^os in summer to lows of -50^o C in winter. North facing slopes are generally underlain by permafrost.

The nearest major city centre is Dawson, a supply centre for this region with an ample labour force. Power is available along the North Klondike Highway. Water resources are abundant in the project area in flowing steams.



Curlew Lake Resources claims

January 4, 2007
Stass
 PROFESSIONAL
 OF
 G. CASSELL
 BRITISH
 COLONIA
 SCIENTIST

scale 1:25,000

CURLEW LAKE RESOURCES LTD
TYPHOON PROPERTY
Figure 2 - CLAIM LOCATION MAP
 NTS 115P14 Mining District: Dawson
 Datum: NAD83 Projection: UTM, zone 8
 Date: January 1, 2007 Job: CWQ-06-01-YT
AURORA GEOSCIENCES LTD

5.0 HISTORY

The Clear Creek area has a long history of placer gold production and mineral exploration for silver, gold, antimony, copper, tin and tungsten. The majority of work has been conducted on the Clear Creek Property located on Left Clear Creek, immediately east of the Typhoon Property.

In 1971, a joint venture between Silver Standard Mines Ltd and Canada Tungsten Mining Corp staked claims in the area following the release of GSC Open File 51 indicating anomalous tungsten, gold and tin in the area. United Keno Hill Mines Ltd and Standard Oil Company of B.C. Ltd also acquired land in the area during this time. The staking generally occurred in the Left Clear Creek area. These companies conducted soil sampling and geological mapping programs on their properties.

In 1978 and 1979, Cominco Ltd conducted programs of stream sediment sampling, soil sampling and prospecting on their NEL claims at the headwaters of Forty Mile Creek, 20 km to the northeast of the Typhoon Property. They were focused on anomalous tin and silver values indicated on government regional stream sediment geochemical samples in the area. They obtained very anomalous Sn values up to 18,100 ppm from stream sediment samples.

In 1980 - 81 Canada Tungsten Mining Corporation Ltd. acquired large blocks of claims through staking and options in the Dublin Gulch and Clear Creek areas and carried out extensive programs, in search of tungsten and, to a much lesser extent, tin and gold. On Left Clear Creek, Canada Tungsten did extensive mapping and geochemical surveys. Some trenching and sampling was done on tungsten bearing skarns but no work was done to follow up on geochemical gold anomalies. The original claim group was gradually reduced to the Rain and Wind claims, which consisted of several non-contiguous claims covering various mineral showings and anomalies. Canada Tungsten later dropped its option.

In 1986, prospector Scottie Thom discovered gold-bearing massive pyrite float on the south side of Left Clear Creek. In 1987, placer operations conducted by Blackstone Placer Mining Company encountered heavy pyrite mineralization in a deep trench cutting into bedrock. The showing and properties were later optioned by Secret Pass Minerals Corp and, in 1987, they conducted a program of line cutting, geophysical surveying, soil and rock sampling. The property was later optioned to Cambridge Resources Ltd, who in 1989 conducted trenching and drilled 276 m in 4 diamond drill holes. The drill program encountered one significant intersection containing 0.546 oz/t gold over 0.49 m.

In 1995, Kennecott Canada Inc optioned the Clear Creek Property and conducted an extensive program of soil sampling, geological mapping, trenching, road construction and reverse circulation drilling on the Rhosgobel Stock. Kennecott dropped its option later that year. In 1996, New Millenium Mining Inc acquired the project and in the fall 2004 it signed a deal to vend the project to Stratagold Corp.

In 2004, Curlew Lake conducted a soil sample survey on the central portion of the Typhoon Property. The following year they optioned the property to Select Resources Corporation. Select expanded the soil sampling survey eastward and conducted a magnetic survey on the expanded grid area. The program returned two weak magnetic highs on the western part of the survey area and a few scattered anomalous gold values as high as 342 ppb Au. In early 2006, Select decided not to continue with the option and returned the property to Curlew Lake.

In 2005, Mr Adamson optioned the Blue and Bell claims to Electrum Mining Ltd. Later that year Electrum conducted a soil sampling and magnetic survey on the property. The program identified a large magnetic high centered on the property and a few scattered weakly anomalous gold-in-soil values, the highest being 20 ppb.

6.0 REGIONAL GEOLOGICAL SETTING

The Typhoon Property lies within the Selwyn Basin, which is comprised of Late Proterozoic to Mid-Paleozoic continental margin sediments. The basinal rocks in the area of the property consist of an inlier of Upper Proterozoic to Lower Cambrian rocks of the Hyland Group overlain by Upper Cambrian and Ordovician Rabbitkettle Formation, which is in turn overlain by the Ordovician to Lower Silurian Road River Group and capped by the Devonian to Mississippian Earn Group.

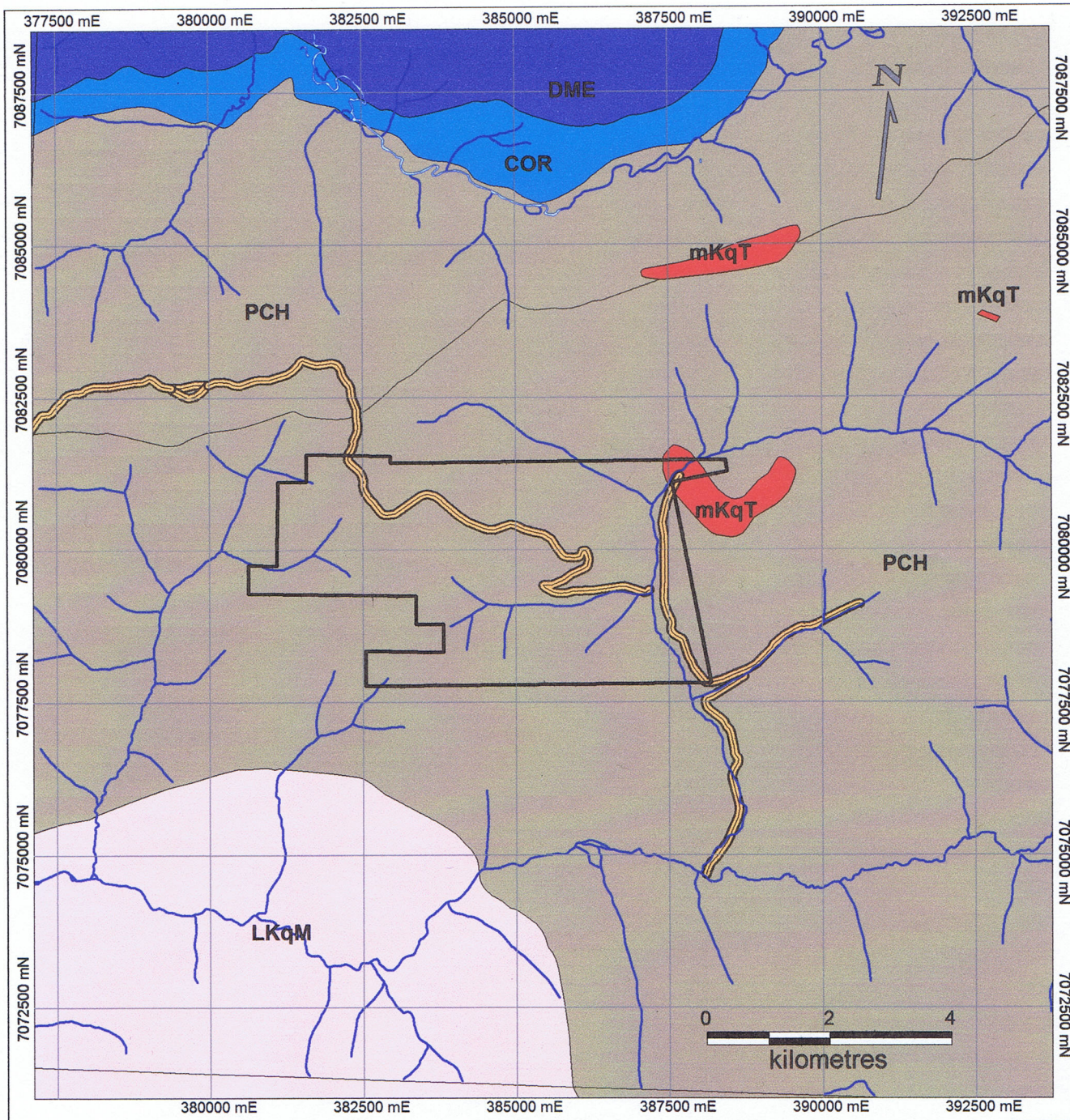
The Hyland Group (PCH) is comprised of thin to thick bedded, brown to pale green shale, fine to coarse grained quartz-rich sandstone, quartz pebble conglomerate, argillaceous limestone, phyllite, psammite and minor marble (Gordey, et. al., 1999). The Rabbitkettle Formation (COR) consists of thin bedded, wavy banded, silty limestone and grey lustrous calcareous phyllite, limestone breccia and conglomerate, laminated grey siltstone, chert, slate and local mafic flows, breccia and tuff. The Road River Group (ODR) is comprised of black graptolitic shale and chert, minor argillaceous limestone and dolomitic siltstone. The Earn Group (DME) consists of thin-bedded slate with interbedded chert-quartz arenite and wacke, chert pebble conglomerate, black siliceous siltstone, nodular and bedded barite and rare limestone.

The layered rocks are intruded by mid-Cretaceous Tombstone Suite intrusions to the north and east and by lower Cretaceous McQueston Suite intrusions to the south. Two types of Tombstone Suite intrusion are recognized in the area; medium to coarse-grained biotite-hornblende-clinopyroxene syenite, quartz syenite, granite, monzogranite, diorite and tinguaitite (mKyT); and medium- to coarse-grained, locally porphyritic biotite hornblende, clinopyroxene quartz monzonite and granodiorite (mKqT). The McQueston Suite is comprised of medium- to coarse-grained, locally porphyritic and k-feldspar megacrystic biotite ± muscovite granite and quartz monzonite.

The Clear Creek area is within the "Tintina Gold Belt", which is an intrusion-related, gold-bearing system that stretches in an arc from central Alaska through to southern

Yukon. In Yukon, this belt is known as the Tombstone-Tungsten Magmatic Belt. Within this belt many gold discoveries are spatially related to mid-Cretaceous alkalic plutonic intrusions of the Tombstone series. A wide variety of disseminated, skarn and vein-type mineral occurrences both within and near the intrusions have been identified containing gold, tungsten, lead, zinc, copper and tin. The most significant discovery in the Clear Creek area is the Dublin Gulch Deposit, located 80 km east of the Red Rose Property. The Dublin Gulch deposit has reserves of 50.8 million tonnes containing 0.93 g/t gold. Other Tintina Gold Belt occurrences in the area are the Clear Creek Property located 8 km east of the Typhoon Property and the Sheelite Dome Property located 55 km to the east. The Clear Creek area also has a long history of placer gold production.

No mineralization has yet been discovered on the Typhoon Property. However in the Left Clear Creek valley a number of quartzite boulders have been discovered containing abundant pyrite in quartz-sericite-clay altered rocks. On the Clear Creek Property scheelite and auriferous arsenopyrite are found in quartz veined granite stocks at the Rhosgobel, Josephine, Lewis and Pukelman minfile occurrences. Scheelite and molybdenite are also found in sheeted quartz and potassium feldspar veins at Pukelman. The Typhoon Property has not been subject to any detailed property scale mapping.



GEOLOGICAL LEGEND

- mKqT** mid Cretaceous
Tombstone Suite quartz-monzonite
- LKqM** Lower Cretaceous
Two Sisters Batholith quartz monzonite
- Devonian to Mississippian
Earn Group sediments
- Cambrian to Ordovician
Rabbitkettle Formation sediments
- PCH** Upper Proterozoic to Lower Cambrian
Hyland Group meta-sediments

January 4, 2007
 S. G. CASSELMAN
 BRITISH COLUMBIA
 PROFESSIONAL ENGINEER

scale 1:100,000

CURLEW LAKE RESOURCES LTD
TYPHOON PROPERTY
Figure 3 - REGIONAL GEOLOGY MAP

NTS 115P14 Mining District: Dawson
Datum: NAD83 Projection: UTM, zone 8
Date: January 1, 2007 Job: CWQ-06-01-YT

AURORA GEOSCIENCES LTD

7.0 2006 EXPLORATION PROGRAM

The 2006 exploration program on the Typhoon Property consisted of a total magnetic field survey using GPS for guidance. There was no need to establish a grid on the property. The 2005 surveys on the Typhoon and Blue-Bell Properties are represented by the north-south lines on Figure 4 and the 2006 survey is represented by the east-west lines.

For the magnetic survey the crew was equipped with the following instruments and equipment:

Field unit: 2 - Gem GSM-19 Overhauser magnetometers.
Base unit: 1 - Gem GSM-19T proton precession magnetometer.
Data processing: P-800 laptop and colour printer. Data processing with Geosoft software and proprietary data conversion software.

The magnetometer survey was conducted according to the following specifications:

Station spacing: 12.5 m nominal.

Base station magnetometer: Installed near the camp and cycled at 5 second intervals. Variations exceeding 3 nT over the 5 seconds interval were rejected.

Levelling: The operators levelled to a common datum by surveying, on a daily basis, a 150 m interval and calculating the mean difference.

Station Coordinates: All geographic coordinates are in NAD 83 UTM, zone 8N coordinates and were determined by Garmin GPS 72.

The total magnetic field data was corrected for temporal geomagnetic variation relative to the base station unit using software incorporating linear interpolation. Any data taken during intervals when the base station magnetometer varied by 3 nT or greater over 5 s were rejected.

The station locations were determined by non-differential GPS recording the track during the survey. The track data was dumped and merged with the magnetic data using the time stamps to synchronize the two data sets. This data was then merged and levelled with data from the 2005 surveys on the Typhoon and Blue-Bell Properties and imported into Oasis Montaj software to create the plot of Shaded Relief Total Magnetic Field in Figure 4.

Late in the season Curlew Lake attempted to expand the soil sample survey to cover the area between the previous soil surveys, however the crew was too late and the area had already been blanketed with snow.

8.0 CONCLUSIONS and RECOMMENDATIONS

Figure 4 illustrates a large magnetic high centred over the western part of the expanded Typhoon Property. This high tails off to three isolated smaller magnetic highs in the area covered by the 2006 magnetic survey in the centre of the map area. As well another isolated magnetic high is observed towards the southeastern margin of the 2006 survey area. The magnetic field range for the survey area is 80 nano Teslas. Outcrop in the area is sparse and the crew did not observe any bedrock features, however based on the regional geological setting and the magnetic response these features would appear to represent buried intrusive bodies.

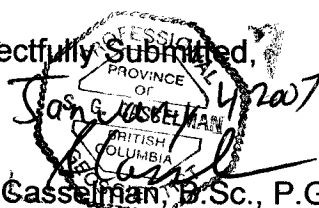
Figure 5 is a plot of historical soil sample data. This figure shows scattered anomalous gold values up to 342 ppb gold mainly in the eastern part of the survey area. These values are considered significant for the region.

Recommendations for future work on the property are to:

- 1 Expand the magnetic survey to cover the remainder of the property.
- 2 Prospecting and geological mapping over the property.
- 3 An IP geophysical survey consisting of a few lines over the magnetic highs on the western part of the property and in the area of high gold-in-soil geochemistry.
- 4 Soil sampling over the complete property with 200 m line spacing and 50 m station spacing and in the central portion of the property at 100 m line-spacing and 25 m station spacing.
- 5 To be followed by approximately 1000 m of diamond drilling to test the magnetic highs and any other anomalies identified by the IP survey

An estimated budget for this program is \$350,000.

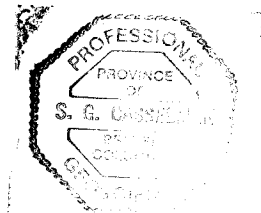
Respectfully Submitted,


Scott Casselman, B.Sc., P. Geo
Geologist

9.0 STATEMENT OF EXPENDITURES – Typhoon Property

All expenditures are pro-rated with other programs conducted in the area for other operators based on field survey time.

Wages	S. Casselman (7 hours data processing @ \$90)	630.00
	Warren Kapaniuk (1 day @ \$300)	300.00
	Gabe Fortin, Crew chief (7.5 days @ \$500)	3,750.00
	Cody Woodman, assistant (7.5 days @ \$400)	3,000.00
Camp equipment rental (7.5 days @ \$100)		750.00
Magnetometer rental (7.5 days @ \$240 for 3 units)		1,800.00
Vehicle rental (7.5 days @ \$100)		750.00
Groceries		292.83
Fuel		152.98
Room and Board		236.09
Map reproduction costs		195.00
Aurora Administrative charges		133.03
Report Writing and reproduction costs		<u>2,000.00</u>
Total		<u>\$13,989.00</u>



10.0 REFERENCES

- Deklerk, R., 2002. Yukon Minfile, 2002, A Database of Mineral Occurrences. Exploration and Geological Services Division, Yukon Region, Indian and Northern Affairs Canada.
- Gordey, S. P. and Makepeace, A. J., 1999. Yukon Digital Geology. Geological Survey of Canada, Open File D3826.

APPENDIX I

STATEMENT OF QUALIFICATIONS

Statement of Qualifications

I, Scott Casselman, P. Geo., certify that:

- 1) I reside at 33 Firth Road, Whitehorse, Yukon Territory, Y1A 4R5
- 2) I am a geologist employed by Aurora Geosciences Ltd. of Whitehorse, Yukon Territory.
- 3) I graduated from Carleton University in Ottawa, Ontario with a Bachelor of Science Degree in Geology in 1985 and have worked as a geologist since that time.
- 4) I am a member of the Association of Professional Engineers and Geoscientists of British Columbia, Registration No. 20032.
- 5) I compiled this report from data collected by Aurora Geosciences staff on the Typhoon Property during the summer of 2006.
- 6) I have not visited the Typhoon Property.

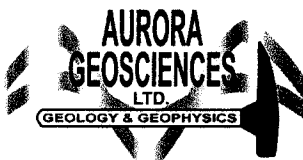
Dated this 4th day of January, 2007, at Whitehorse, Yukon Territory.

A circular professional seal is partially visible behind the signature. The seal contains the text "ASSOCIATION OF PROFESSIONAL ENGINEERS AND GEOSCIENTISTS OF BRITISH COLUMBIA" around the perimeter and "REGISTRATION NO. 20032" in the center. The signature "Scott G. Casselman" is written in black ink over the seal.

Scott G. Casselman, BSc., P. Geo.

APPENDIX II

CREW LOG



**CREW LOG
CURLEW LAKE RESOURCES LTD.
CWQ-06-01-YT
TYPHOON PROPERTY - 2006
Magnetics**

**Crew: Gabe Fortin (Geologist, crew chief)
Cody Woodman (Field assistant)**

Friday, June 30: Buy groceries in Dawson City then attempt to locate Barlow Dome Road. Get truck stuck and spend rest of day digging it out. Return to Dawson City, arrive at midnight, stay at Triple J again. Mostly sunny and warm. 50% Curlew, 50% Xennex.

Saturday, July 1: Canada Day! Leave Dawson in AM, get directions from Scott and locals near McQuesten River, drive up Clear Creek Road ~ 20 Miles, almost gets hit head on by pick-up truck around a corner and then replaces a flat tire. Set up camp at 0387254 7079153. Mostly sunny. 50% Curlew, 50% Xennex.

Sunday, July 2: Locate grid, Cody starts mag on L80500N and Gabe on L80400N. GPS readings not so good partway down the line, will need to set up grid for this part.

Production: ~3 km Mag

Monday, July 3: Cody attempts to grid L80300N, GPS problems, realizes he went onto L80200N. Radios only work if we are within 1 km of each other, Cody cannot reach Gabe for help with GPS. Trees are more spaced out on these lines than yesterday's, Cody thinks we might be able to Mag with the GPS. Cloudy with some showers in AM, sunny periods in PM. Gabe works on staking on Xennex property.

Tuesday, July 4: Gabe drives to Dawson to register Xennex claims. Cody runs mag on Typhoon property.

Wednesday, July 5: Cody mags L801N and L802N, Gabe mags L800N and L799N, dense bush through all the lines. Sunny and hot all day. Moose visits camp around dinner time.

Production : 9.6 km of mag

Thursday, July 6: Had some issues with the generator last night, seemed to be burning oil, not sure how it got through but we changed the oil and cranked it until

all the oil was burn, works fine again. Cody mags L796N and L795N, Gabe mags L798N and L797N. Base mag turns off in afternoon, lose about 1 km of data. Sunny and hot with lots of mosquitoes.

Production : 9.6 km of mag (lost ~1km)

Friday, July 7: Cody mags L794N and the west side of L803N, re-mags the west side of L795N and L797N, Gabe mags L792N, L793N and the east side of L803N. Heavy rain with some thunder in AM, decided to delay our start for the day, cleared out around 11:30 AM, then mostly sunny and hot for the rest of the day. Base mag worked fine all day.

Production : 11 km of mag

Saturday, July 8: Heavy Rain in AM, wait until it lets up a bit around noon to start, showers the rest of the day. Crew performs mag survey on Xennex's property. Cody magged end of L805N gabe magged end of L804N.

Production : ~2 km mag

Sunday, July 9: Pack-up camp and move on to Mayo.

APPENDIX III

CLAIM DATA

Claim	Grant No.	Expiry Date
Bell 10	YC20885	October 12, 2011
Bell 11	YC20886	July 12, 2007
Bell 12	YC20887	October 12, 2011
Bell 13	YC20888	July 12, 2007
Bell 14	YC20889	October 12, 2011
Bell 15	YC20890	July 12, 2007
Bell 16 - 24	YC20891 - YC20899	October 12, 2011
Blue 1 - 4	YC21554 - YC21557	October 12, 2011
Wind 1 - 3	YC28846 - YC28848	September 17, 2013
Zephyr 1 - 3	YC28849 - YC28851	September 17, 2013
Storm 1 - 3	YC28852 - YC28854	September 17, 2013
Gale 1 - 3	YC28855 - YC28857	September 17, 2013
Breeze 1 - 8	YC34617 - YC34624	September 13, 2014
Blizzard 1	YC35578	December 15, 2012
Blizzard 2	YC35579	December 15, 2013
Blizzard 3	YC35580	December 15, 2012
Blizzard 4	YC35581	December 15, 2013
Blizzard 5	YC35582	December 15, 2012
Blizzard 6	YC35583	December 15, 2013
Blizzard 7 - 8	YC35584 - YC35585	December 15, 2012
Blizzard 9 - 13	YC35586 - YC35590	December 15, 2013
Blizzard 14	YC35591	December 15, 2012
Blizzard 15	YC35592	December 15, 2013
Blizzard 16	YC35593	December 15, 2012
Squall 1 - 5	YC36582 - YC36586	December 2, 2007
Squall 6	YC36587	December 2, 2008
Squall 7	YC36588	December 2, 2007
Squall 8	YC36589	December 2, 2008
Squall 9 - 29	YC36590 - YC36610	December 2, 2007
Squall 30	YC36611	December 2, 2008
Squall 31	YC36612	December 2, 2007
Squall 32	YC36613	December 2, 2008
Squall 33	YC36614	December 2, 2007
Squall 34	YC36615	December 2, 2009
Squall 35 - 36	YC36616 - YC36617	December 2, 2008
Squall 37 - 42	YC36618 - YC36623	December 2, 2007
Squall 43	YC36624	December 2, 2008
Squall 44	YC36625	December 2, 2007
Squall 45	YC36626	December 2, 2008
Squall 46	YC36627	December 2, 2007
Squall 47	YC36628	December 2, 2008
Squall 48	YC36629	December 2, 2007
Squall 49	YC36630	December 2, 2008
Squall 50	YC36631	December 2, 2007
Squall 51	YC36632	December 2, 2008
Squall 52 - 58	YC36633 - YC36639	December 2, 2007
Squall 59 - 62	YC36640 - YC36643	December 2, 2008

**TYPHOON PROEPRTY
MAGNETIC SURVEY DATA**

Line	Station	X	Y	Raw_mag	Cor_mag
5200	4550	385210	7078654	57597.55	57992.65
5200	4562.5	385210.4	7078667	57591.18	57985.78
5200	4575	385210.9	7078680	5759.41	57985.31
5200	4587.5	385211.3	7078693	57592.38	57987.58
5200	4600	385211.8	7078706	57594.97	57989.67
5200	4612.5	385212.2	7078719	57594.1	57988.51
5200	4625	385212.7	7078732	5764.42	57999.12
5200	4637.5	385213.1	7078745	57596.97	57991.77
5200	4650	385213.6	7078758	57593.52	57988.32
5200	4662.5	385214	7078771	57597.14	57991.94
5200	4675	385214.4	7078784	57597.12	57991.12
5200	4687.5	385214.9	7078797	57596.8	57989.98
5200	4700	385215.3	7078810	57593.47	57987.17
5200	4712.5	385215.8	7078823	57596.37	57989.47
5200	4725	385216.2	7078836	57594.93	57986.63
5200	4737.5	385216.7	7078849	57594.2	57984.9
5200	4750	385217.1	7078862	57595.91	57985.61
5200	4762.5	385217.6	7078875	5759.93	57979.93
5200	4775	385218	7078889	57579.44	57967.74
5200	4787.5	385218.4	7078902	57596.4	57984.2
5200	4800	385218.9	7078915	57589.58	57976.38
5200	4812.5	385219.3	7078928	57596.42	57983.12
5200	4825	385219.8	7078941	5763.34	57989.64
5200	4837.5	385220.2	7078954	57579.18	57965.38
5200	4850	385220.7	7078967	57584.61	57970.41
5200	4862.5	385221.1	7078980	5762.23	57988.23
5200	4875	385221.6	7078993	5766.72	57992.52
5200	4887.5	385222	7079006	57591.98	57978.48
5200	4900	385222.4	7079019	57585.35	57972.85
5200	4912.5	385222.9	7079032	57594.17	57981.87
5200	4925	385223.3	7079045	57593.47	57981.07
5200	4937.5	385223.8	7079058	57594.96	57982.76
5200	4950	385224.2	7079071	57584.64	57972.14
5200	4962.5	385224.7	7079084	57591.3	57978.13
5200	4975	385225.1	7079097	57592.47	57979.37
5200	4987.5	385225.6	7079110	57593.1	57980.1
5200	5000	385226	7079123	57593.32	57980.32
5200	5012.5	385225.8	7079135	57595.12	57981.42
5200	5025	385225.6	7079148	57595.5	57980.85
5200	5037.5	385225.4	7079160	57596.2	57982.02
5200	5050	385225.3	7079173	57594.25	57979.95
5200	5062.5	385225.1	7079185	5769.82	57995.32
5200	5075	385224.9	7079198	5769.73	57994.83
5200	5087.5	385224.7	7079210	5768.39	57993.69
5200	5100	385224.5	7079222	5767.36	57992.26
5200	5112.5	385224.3	7079235	57611.17	57996.17
5200	5125	385224.1	7079247	57615.39	58000.49
5200	5137.5	385224	7079260	5767.3	57992.13
5200	5150	385223.8	7079272	57617.87	58002.87
5200	5162.5	385223.6	7079285	57611.27	57996.27
5200	5175	385223.4	7079297	5769.53	57994.63
5200	5187.5	385223.2	7079310	576.76	57985.16
5200	5200	385223	7079322	5765.12	57989.92
5200	5212.5	385222.9	7079334	5765.86	57991.06
5200	5225	385222.7	7079347	5767.19	57992.69
5200	5237.5	385222.5	7079359	5768.93	57994.83
5200	5250	385222.3	7079372	576.53	57986.13
5200	5262.5	385222.1	7079384	5764.11	57990.01
5200	5275	385221.9	7079397	57598.6	57984.3
5200	5287.5	385221.7	7079409	5762.95	57988.55
5200	5300	385221.6	7079421	57598.87	57984.57
5200	5312.5	385221.4	7079434	57597.16	57982.86
5200	5325	385221.2	7079446	5764.8	57990.1
5200	5337.5	385221	7079459	5763.98	57989.38
5200	5350	385220.8	7079471	57599.1	57984.31
5200	5362.5	385220.6	7079484	576.99	57985.99
5200	5375	385220.4	7079496	5762.42	57986.82
5200	5387.5	385220.3	7079508	57598.22	57981.92

**TYPHOON PROEPRTY
MAGNETIC SURVEY DATA**

Line	Station	X	Y	Raw_mag	Cor_mag
5200	5400	385220.1	7079521	5766.27	57989.87
5200	5412.5	385219.9	7079533	5765.97	57989.57
5200	5425	385219.7	7079546	5764.75	57988.25
5200	5437.5	385219.5	7079558	5765.42	57988.32
5200	5450	385219.3	7079571	5769.42	57991.62
5200	5462.5	385219.1	7079583	5761.2	57993.6
5200	5475	385219	7079596	5768.15	57989.55
5200	5487.5	385218.8	7079608	5764.98	57986.68
5200	5500	385218.6	7079620	5766.6	57987.86
5200	5512.5	385218.4	7079633	5766.14	57987.64
5200	5525	385218.2	7079645	57612.66	57994.86
5200	5537.5	385218	7079658	5762.28	57983.68
5200	5550	385217.9	7079670	57618.96	58000.66
5200	5562.5	385217.7	7079683	5764.64	57986.04
5200	5575	385217.5	7079695	5764.66	57987.06
5200	5587.5	385217.3	7079707	576.42	57982.62
5200	5600	385217.1	7079720	5766.41	57988.41
5200	5612.5	385216.9	7079732	5764.66	57986.96
5200	5625	385216.7	7079745	5767.45	57989.85
5200	5637.5	385216.6	7079757	57616.2	57998.3
5200	5650	385216.4	7079770	5765.63	57987.83
5200	5662.5	385216.2	7079782	5763.63	57985.63
5200	5675	385216	7079795	5764.43	57986.23
5200	5687.5	385215.8	7079807	57625.7	58008
5200	5700	385215.6	7079819	57611.43	57993.53
5200	5712.5	385215.4	7079832	5769.6	57992.1
5200	5725	385215.3	7079844	5764.71	57988.21
5200	5737.5	385215.1	7079857	576.32	57983.02
5200	5750	385214.9	7079869	5766.57	57990.27
5200	5762.5	385214.7	7079882	5761.48	57986.18
5200	5775	385214.5	7079894	5761.7	57994.27
5200	5787.5	385214.3	7079906	5768.27	57992.67
5200	5800	385214.1	7079919	5768.5	57993.1
5200	5812.5	385214	7079931	5767.9	57992.29
5200	5825	385213.8	7079944	57615.4	58000.6
5200	5837.5	385213.6	7079956	5764.79	57990.09
5200	5850	385213.4	7079969	5767.96	57992.96
5200	5862.5	385213.2	7079981	5763.26	57988.36
5200	5875	385213	7079993	576.48	57986.18
5200	5887.5	385212.9	7080006	5766.8	57992.6
5200	5900	385212.7	7080018	5767.62	57993.72
5200	5912.5	385212.5	7080031	5768.23	57993.83
5200	5925	385212.3	7080043	57613.52	57999.22
5200	5937.5	385212.1	7080056	5767.64	57993.04
5200	5950	385211.9	7080068	5768.87	57994.07
5200	5962.5	385211.7	7080081	5767.48	57992.58
5200	5975	385211.6	7080093	5765.54	57990.64
5200	5987.5	385211.4	7080105	5761.18	57995.48
5200	6000	385211.2	7080118	57615.48	58000.48
5200	6012.5	385211	7080130	57613.38	57998.98
5200	6025	385210.8	7080143	5761.49	57995.69
5200	6037.5	385210.6	7080155	57611.23	57995.83
5200	6050	385210.4	7080168	5761.42	57995.12
5200	6062.5	385210.3	7080180	57614.41	57999.21
5200	6075	385210.1	7080192	57612.36	57996.56
5200	6087.5	385209.9	7080205	5762.49	58004.89
5200	6100	385209.7	7080217	57616.47	58000.97
5200	6112.5	385209.5	7080230	5768.59	57992.39
5200	6125	385209.3	7080242	57612.18	57996.08
5200	6137.5	385209.1	7080255	5769.47	57993.57
5200	6150	385209	7080267	5761.7	57993.67
5200	6162.5	385208.8	7080279	57613.73	57996.93
5200	6175	385208.6	7080292	57616.3	57999.1
5200	6187.5	385208.4	7080304	57613.6	57995.8
5200	6200	385208.2	7080317	57617.7	57999.9
5200	6212.5	385208	7080329	57616.62	57999.02
5200	6225	385207.9	7080342	57616.76	57998.76
5200	6237.5	385207.7	7080354	57614.35	57996.35

**TYPHOON PROEPRTY
MAGNETIC SURVEY DATA**

Line	Station	X	Y	Raw_mag	Cor_mag
5200	6250	385207.5	7080367	57615.73	57997.63
5200	6262.5	385207.3	7080379	57617.87	57999.47
5200	6275	385207.1	7080391	57613.57	57995.47
5200	6287.5	385206.9	7080404	57613.5	57994.95
5200	6300	385206.7	7080416	57612.47	57994.17
5200	6312.5	385206.6	7080429	57612.94	57994.54
5200	6325	385206.4	7080441	5768.41	57989.71
5200	6337.5	385206.2	7080454	57612.86	57993.76
5200	6350	385206	7080466	5765.18	57986.08
5400	4550	385403	7078656	576.15	58000.45
5400	4562.5	385402.4	7078668	57569.86	57970.16
5400	4575	385401.8	7078681	57559.75	57960.45
5400	4587.5	385401.3	7078693	57573.34	57974.04
5400	4600	385400.7	7078705	57588.1	57988.2
5400	4612.5	385400.1	7078718	57578.6	57979.4
5400	4625	385399.5	7078730	57578.24	57978.44
5400	4637.5	385398.9	7078742	57586.13	57986.43
5400	4650	385398.3	7078755	57572.37	57972.87
5400	4662.5	385397.8	7078767	57558.34	57959.64
5400	4675	385397.2	7078779	5757.62	57971.62
5400	4687.5	385396.6	7078792	57575.1	57976.6
5400	4700	385396	7078804	57571.83	57973.53
5400	4712.5	385395.4	7078816	57573.34	57975.04
5400	4725	385394.8	7078829	57574.95	57976.55
5400	4737.5	385394.3	7078841	57575.95	57977.75
5400	4750	385393.7	7078853	57584.9	57986.69
5400	4762.5	385393.1	7078866	57578.37	57980.17
5400	4775	385392.5	7078878	57584.55	57986.15
5400	4787.5	385391.9	7078890	57581.36	57982.56
5400	4800	385391.3	7078903	57575.27	57977.87
5400	4812.5	385390.8	7078915	57579.63	57982.13
5400	4825	385390.2	7078927	57579.59	57981.39
5400	4837.5	385389.6	7078940	57586.47	57988.47
5400	4850	385389	7078952	57577.51	57979.21
5400	4862.5	385388.4	7078964	57585.12	57986.72
5400	4875	385387.8	7078977	57568.93	57971.03
5400	4887.5	385387.3	7078989	57572.81	57975.41
5400	4900	385386.7	7079001	57581.49	57984.49
5400	4912.5	385386.1	7079014	57566.84	57971.04
5400	4925	385385.5	7079026	57566.25	57970.85
5400	4937.5	385384.9	7079038	57573.8	57978.38
5400	4950	385384.3	7079051	57562.3	57966.63
5400	4962.5	385383.8	7079063	57554.25	57958.65
5400	4975	385383.2	7079075	5756.58	57964.28
5400	4987.5	385382.6	7079088	57572.1	57973.41
5400	5000	385382	7079100	57576.6	57975.76
5400	5012.5	385382.2	7079113	5757.5	57968.9
5400	5025	385382.3	7079125	57579.76	57977.76
5400	5037.5	385382.5	7079138	57577.88	57974.88
5400	5050	385382.7	7079151	57578.37	57974.47
5400	5062.5	385382.8	7079163	5758.2	57975.52
5400	5075	385383	7079176	57582.59	57978.49
5400	5087.5	385383.2	7079188	57582.27	57978.27
5400	5100	385383.3	7079201	57579.66	57976.86
5400	5112.5	385383.5	7079214	57581.29	57977.29
5400	5125	385383.7	7079226	57584.78	57980.78
5400	5137.5	385383.8	7079239	5758.57	57976.87
5400	5150	385384	7079252	57588.43	57985.63
5400	5162.5	385384.2	7079264	57593.95	57991.55
5400	5175	385384.3	7079277	57587.83	57986.13
5400	5187.5	385384.5	7079290	57596.57	57994.87
5400	5200	385384.7	7079302	57633.54	58031.14
5400	5212.5	385384.8	7079315	57594.28	57991.88
5400	5225	385385	7079328	57594.69	57991.29
5400	5237.5	385385.2	7079340	57592.85	57988.55
5400	5250	385385.3	7079353	57596.95	57992.65
5400	5262.5	385385.5	7079365	57593.73	57988.63
5400	5275	385385.7	7079378	57592.3	57986.9

**TYPHOON PROEPRTY
MAGNETIC SURVEY DATA**

Line	Station	X	Y	Raw_mag	Cor_mag
5400	5287.5	385385.8	7079391	57595.41	57988.91
5400	5300	385386	7079403	57589.77	57982.27
5400	5312.5	385386.2	7079416	5759.34	57982.74
5400	5325	385386.3	7079429	57588.25	57980.65
5400	5337.5	385386.5	7079441	57592.19	57985.09
5400	5350	385386.7	7079454	57583.95	57976.45
5400	5362.5	385386.8	7079467	5759.66	57982.96
5400	5375	385387	7079479	57589.91	57981.51
5400	5387.5	385387.2	7079492	57597.57	57988.87
5400	5400	385387.3	7079504	57596.19	57987.89
5400	5412.5	385387.5	7079517	57592.2	57983.62
5400	5425	385387.7	7079530	57595.12	57986.32
5400	5437.5	385387.8	7079542	57599.2	57990
5400	5450	385388	7079555	5762.7	57993.7
5400	5462.5	385388.2	7079568	5759.93	57982.63
5400	5475	385388.3	7079580	57591.63	57984.13
5400	5487.5	385388.5	7079593	57592.2	57984.4
5400	5500	385388.7	7079606	57593.95	57986.75
5400	5512.5	385388.8	7079618	57591.11	57984.21
5400	5525	385389	7079631	57596.15	57989.45
5400	5537.5	385389.2	7079643	57593.58	57986.28
5400	5550	385389.3	7079656	57595.92	57989.02
5400	5562.5	385389.5	7079669	57596.37	57989.87
5400	5575	385389.7	7079681	5763.5	57996.85
5400	5587.5	385389.8	7079694	5759.68	57987.18
5400	5600	385390	7079707	57587.51	57983.61
5400	5612.5	385390.2	7079719	57598.77	57995.27
5400	5625	385390.3	7079732	57591.85	57988.05
5400	5637.5	385390.5	7079745	57594.16	57990.46
5400	5650	385390.7	7079757	57593.37	57989.47
5400	5662.5	385390.8	7079770	57594.46	57990.66
5400	5675	385391	7079783	57595.39	57991.99
5400	5687.5	385391.2	7079795	57598.44	57994.14
5400	5700	385391.3	7079808	57596.66	57992.86
5400	5712.5	385391.5	7079820	576.49	57995.59
5400	5725	385391.7	7079833	57597.89	57993.09
5400	5737.5	385391.8	7079846	57591.62	57986.52
5400	5750	385392	7079858	57599.45	57994.75
5400	5762.5	385392.2	7079871	57599.8	57996
5400	5775	385392.3	7079884	57596.94	57992.74
5400	5787.5	385392.5	7079896	57594.72	57991.52
5400	5800	385392.7	7079909	57598.14	57994.54
5400	5812.5	385392.8	7079922	5762.3	57999.6
5400	5825	385393	7079934	57597.71	57994.41
5400	5837.5	385393.2	7079947	5761.41	57998.11
5400	5850	385393.3	7079959	57596.34	57992.04
5400	5862.5	385393.5	7079972	57597.83	57992.03
5400	5875	385393.7	7079985	5762.61	57996.71
5400	5887.5	385393.8	7079997	57598.53	57992.43
5400	5900	385394	7080010	57593.13	57986.73
5400	5912.5	385394.2	7080023	57599.17	57993.07
5400	5925	385394.3	7080035	57599.77	57993.47
5400	5937.5	385394.5	7080048	57597.11	57990.51
5400	5950	385394.7	7080061	5762.46	57995.96
5400	5962.5	385394.8	7080073	57596.7	57989.7
5400	5975	385395	7080086	5763.3	57996.43
5400	5987.5	385395.2	7080098	57594.11	57988.01
5400	6000	385395.3	7080111	57596.72	57990.22
5400	6012.5	385395.5	7080124	57595.55	57988.85
5400	6025	385395.7	7080136	57598.21	57991.21
5400	6037.5	385395.8	7080149	57597.52	57990.82
5400	6050	385396	7080162	57596.37	57989.07
5400	6062.5	385396.2	7080174	57599.84	57992.44
5400	6075	385396.3	7080187	57596.38	57989.18
5400	6087.5	385396.5	7080200	576.34	57993.44
5400	6100	385396.7	7080212	5768.67	58001.57
5400	6112.5	385396.8	7080225	5763.36	57996.56
5400	6125	385397	7080238	57597.96	57990.96

**TYPHOON PROEPRTY
MAGNETIC SURVEY DATA**

Line	Station	X	Y	Raw_mag	Cor_mag
5400	6137.5	385397.2	7080250	5764.8	57996.88
5400	6150	385397.3	7080263	5765.14	57997.94
5400	6162.5	385397.5	7080275	576.62	57993.62
5400	6175	385397.7	7080288	57594.55	57987.45
5400	6187.5	385397.8	7080301	57597.44	57990.14
5400	6200	385398	7080313	57595.37	57988.67
5400	6212.5	385398.2	7080326	57595.46	57988.66
5400	6225	385398.3	7080339	57593.34	57986.84
5400	6237.5	385398.5	7080351	57594.61	57988.81
5400	6250	385398.7	7080364	57596.51	57990.61
5400	6262.5	385398.8	7080377	57593.55	57989.95
5400	6275	385399	7080389	57597.68	57989.78
5400	6287.5	385399.2	7080402	57597.29	57989.19
5400	6300	385399.3	7080414	57597.49	57989.49
5400	6312.5	385399.5	7080427	57593.63	57985.43
5400	6325	385399.7	7080440	57597.42	57990.22
5400	6337.5	385399.8	7080452	57598.36	57992.46
5400	6350	385400	7080465	57592.66	57988.66
5600	4550	385610	7078735	57599.62	57987.42
5600	4562.5	385609.8	7078747	57598.42	57985.82
5600	4575	385609.6	7078759	57597.9	57984.1
5600	4587.5	385609.3	7078771	5761.6	57987.6
5600	4600	385609.1	7078783	57598.37	57984.97
5600	4612.5	385608.9	7078795	57596.14	57981.94
5600	4625	385608.7	7078808	57596.69	57983.39
5600	4637.5	385608.4	7078820	57598.45	57985.55
5600	4650	385608.2	7078832	5759.7	57978.5
5600	4662.5	385608	7078844	57592.5	57980.3
5600	4675	385607.8	7078856	57595.54	57983.04
5600	4687.5	385607.6	7078868	57594.84	57982.04
5600	4700	385607.3	7078880	57593.7	57980.9
5600	4712.5	385607.1	7078892	576.21	57986.91
5600	4725	385606.9	7078904	57595.58	57981.98
5600	4737.5	385606.7	7078916	57599.58	57986.48
5600	4750	385606.4	7078928	5765.23	57990.63
5600	4762.5	385606.2	7078940	57613.95	57997.25
5600	4775	385606	7078952	57635.81	58017.81
5600	4787.5	385605.8	7078965	57613.4	57994.84
5600	4800	385605.6	7078977	5769.95	57992.15
5600	4812.5	385605.3	7078989	5766.93	57989.33
5600	4825	385605.1	7079001	5769.89	57992.39
5600	4837.5	385604.9	7079013	57597.82	57980.72
5600	4850	385604.7	7079025	57599.61	57981.61
5600	4862.5	385604.4	7079037	57598.38	57979.98
5600	4875	385604.2	7079049	57591.4	57972.34
5600	4887.5	385604	7079061	57594.61	57975.81
5600	4900	385603.8	7079073	57593.48	57974.38
5600	4912.5	385603.6	7079085	57591.8	57972.8
5600	4925	385603.3	7079097	576.25	57981.15
5600	4937.5	385603.1	7079110	57597.33	57978.73
5600	4950	385602.9	7079122	57596.3	57978.03
5600	4962.5	385602.7	7079134	5765.67	57988.37
5600	4975	385602.4	7079146	57596.95	57979.45
5600	4987.5	385602.2	7079158	57597.53	57980.03
5600	5000	385602	7079170	5761.17	57983.57
5600	5012.5	385601.8	7079182	57599.74	57982.84
5600	5025	385601.7	7079195	5765.19	57988.59
5600	5037.5	385601.5	7079207	5761.4	57985.34
5600	5050	385601.4	7079219	57599.5	57983.75
5600	5062.5	385601.2	7079231	5761.19	57986.89
5600	5075	385601.1	7079244	5765.29	57991.19
5600	5087.5	385600.9	7079256	576.6	57986.9
5600	5100	385600.7	7079268	576.41	57987.21
5600	5112.5	385600.6	7079280	5761.27	57987.97
5600	5125	385600.4	7079293	57595.9	57981.59
5600	5137.5	385600.3	7079305	57598.42	57985.12
5600	5150	385600.1	7079317	5761.62	57988.52
5600	5162.5	385600	7079329	5763.49	57990.49

**TYPHOON PROEPRTY
MAGNETIC SURVEY DATA**

Line	Station	X	Y	Raw_mag	Cor_mag
5600	5175	385599.8	7079342	5762.75	57990.55
5600	5187.5	385599.6	7079354	5765.34	57992.84
5600	5200	385599.5	7079366	5768.62	57997.12
5600	5212.5	385599.3	7079379	5761.4	57998.74
5600	5225	385599.2	7079391	5765.83	57994.03
5600	5237.5	385599	7079403	57619.68	58008.68
5600	5250	385598.9	7079415	5767.2	57995.2
5600	5262.5	385598.7	7079428	5766.51	57994.31
5600	5275	385598.5	7079440	5768.77	57996.57
5600	5287.5	385598.4	7079452	5766.2	57994.32
5600	5300	385598.2	7079464	57596.35	57983.75
5600	5312.5	385598.1	7079477	5762.97	57990.37
5600	5325	385597.9	7079489	57599.64	57986.74
5600	5337.5	385597.8	7079501	57599.25	57986.95
5600	5350	385597.6	7079514	57596.5	57984.4
5600	5362.5	385597.4	7079526	5762.9	57990.29
5600	5375	385597.3	7079538	57592.18	57980.48
5600	5387.5	385597.1	7079550	5761.73	57990.03
5600	5400	385597	7079563	57596.81	57985.61
5600	5412.5	385596.8	7079575	576.7	57989.17
5600	5425	385596.6	7079587	576.92	57989.92
5600	5437.5	385596.5	7079599	57596.62	57985.72
5600	5450	385596.3	7079612	57599.38	57988.18
5600	5462.5	385596.2	7079624	57597.19	57986.09
5600	5475	385596	7079636	57594.68	57984.08
5600	5487.5	385595.9	7079648	57598.81	57988.51
5600	5500	385595.7	7079661	57593.47	57983.57
5600	5512.5	385595.5	7079673	5763.49	57993.79
5600	5525	385595.4	7079685	57596.7	57987.8
5600	5537.5	385595.2	7079698	5762.4	57993.5
5600	5550	385595.1	7079710	576.34	57991.74
5600	5562.5	385594.9	7079722	57597.45	57989.75
5600	5575	385594.8	7079734	576.94	57992.64
5600	5587.5	385594.6	7079747	57597.28	57989.28
5600	5600	385594.4	7079759	57599.13	57991.03
5600	5612.5	385594.3	7079771	57592.2	57983.2
5600	5625	385594.1	7079783	57597.15	57987.65
5600	5637.5	385594	7079796	57598.25	57988.35
5600	5650	385593.8	7079808	57598.6	57987.66
5600	5662.5	385593.7	7079820	5761.31	57989.81
5600	5675	385593.5	7079833	5765.8	57994
5600	5687.5	385593.3	7079845	5765.14	57992.94
5600	5700	385593.2	7079857	5766.7	57993.77
5600	5712.5	385593	7079869	5763.31	57989.91
5600	5725	385592.9	7079882	5764.28	57990.98
5600	5737.5	385592.7	7079894	5763.63	57990.43
5600	5750	385592.6	7079906	57599.55	57986.45
5600	5762.5	385592.4	7079918	5761.98	57989.68
5600	5775	385592.2	7079931	57598.2	57988.7
5600	5787.5	385592.1	7079943	57599.54	57991.84
5600	5800	385591.9	7079955	5762.97	57996.17
5600	5812.5	385591.8	7079967	57596.76	57990.96
5600	5825	385591.6	7079980	57599.35	57993.55
5600	5837.5	385591.5	7079992	576.37	57994.97
5600	5850	385591.3	7080004	57595.85	57991.25
5600	5862.5	385591.1	7080017	57597.12	57992.22
5600	5875	385591	7080029	576.75	57995.65
5600	5887.5	385590.8	7080041	57598.7	57992.37
5600	5900	385590.7	7080053	57596.8	57991.5
5600	5912.5	385590.5	7080066	576.54	57994.84
5600	5925	385590.4	7080078	57597.63	57991.93
5600	5937.5	385590.2	7080090	57597.14	57990.94
5600	5950	385590	7080102	576.69	57994.39
5600	5962.5	385589.9	7080115	57598.36	57991.96
5600	5975	385589.7	7080127	5762.76	57996.46
5600	5987.5	385589.6	7080139	5763.48	57996.88
5600	6000	385589.4	7080151	57599.76	57992.16
5600	6012.5	385589.2	7080164	57597.67	57990.87

**TYPHOON PROEPRTY
MAGNETIC SURVEY DATA**

Line	Station	X	Y	Raw_mag	Cor_mag
5600	6025	385589.1	7080176	57594.75	57987.95
5600	6037.5	385588.9	7080188	57598.49	57991.69
5600	6050	385588.8	7080201	57599.63	57993.33
5600	6062.5	385588.6	7080213	57598.43	57991.13
5600	6075	385588.5	7080225	57598.88	57992.28
5600	6087.5	385588.3	7080237	5762.15	57994.95
5600	6100	385588.1	7080250	57598.19	57991.39
5600	6112.5	385588	7080262	57599.14	57992.74
5600	6125	385587.8	7080274	576.24	57995.04
5600	6137.5	385587.7	7080286	57597.97	57992.07
5600	6150	385587.5	7080299	576.48	57994.08
5600	6162.5	385587.4	7080311	5763.37	57997.97
5600	6175	385587.2	7080323	5767.79	58002.09
5600	6187.5	385587	7080336	5761.12	57995.82
5600	6200	385586.9	7080348	576.7	57994.8
5600	6212.5	385586.7	7080360	57594.77	57988.67
5600	6225	385586.6	7080372	57598.14	57991.44
5600	6237.5	385586.4	7080385	5761.42	57994.52
5600	6250	385586.3	7080397	57595.92	57989.12
5600	6262.5	385586.1	7080409	5764.84	57998.24
5600	6275	385585.9	7080421	576.71	57994.61
5600	6287.5	385585.8	7080434	5761.97	57996.17
5600	6300	385585.6	7080446	5761.7	57995.37
5600	6312.5	385585.5	7080458	57596.2	57989.52
5600	6325	385585.3	7080470	57591.3	57985.9
5600	6337.5	385585.2	7080483	57595.28	57988.98
5600	6350	385585	7080495	57594.73	57988.03
5800	4550	385798	7078733	5764.57	57989.57
5800	4562.5	385798.2	7078745	5763.19	57987.99
5800	4575	385798.3	7078757	576.21	57984.71
5800	4587.5	385798.5	7078770	576.98	57985.18
5800	4600	385798.7	7078782	57597.14	57981.14
5800	4612.5	385798.8	7078794	57594.16	57978.26
5800	4625	385799	7078806	5759.53	57975.33
5800	4637.5	385799.2	7078819	57597.27	57981.77
5800	4650	385799.3	7078831	57593.96	57978.26
5800	4662.5	385799.5	7078843	57582.74	57966.54
5800	4675	385799.7	7078855	5759.75	57974.95
5800	4687.5	385799.8	7078867	57584.26	57968.26
5800	4700	385800	7078880	57588.19	57971.99
5800	4712.5	385800.2	7078892	57584.65	57968.05
5800	4725	385800.3	7078904	57581.6	57964.96
5800	4737.5	385800.5	7078916	57582.3	57965.43
5800	4750	385800.7	7078929	57597.53	57980.73
5800	4762.5	385800.8	7078941	5759.72	57972.62
5800	4775	385801	7078953	57592.97	57974.57
5800	4787.5	385801.2	7078965	57595.41	57977.41
5800	4800	385801.3	7078977	57593.33	57974.93
5800	4812.5	385801.5	7078990	576.79	57981.99
5800	4825	385801.7	7079002	5766.58	57987.58
5800	4837.5	385801.8	7079014	5763.99	57985.49
5800	4850	385802	7079026	57599.2	57981.1
5800	4862.5	385802.2	7079039	5765.28	57986.88
5800	4875	385802.3	7079051	5764.12	57985.82
5800	4887.5	385802.5	7079063	5764.22	57986.02
5800	4900	385802.7	7079075	5764.41	57985.81
5800	4912.5	385802.8	7079087	5766.86	57987.86
5800	4925	385803	7079100	5767.67	57987.97
5800	4937.5	385803.2	7079112	5768.94	57989.14
5800	4950	385803.3	7079124	57612.29	57992.89
5800	4962.5	385803.5	7079136	5764.75	57985.35
5800	4975	385803.7	7079149	5762.74	57983.34
5800	4987.5	385803.8	7079161	5766.66	57988.06
5800	5000	385804	7079173	5769.76	57990.96
5800	5012.5	385804.8	7079184	5765.73	57986.23
5800	5025	385805.6	7079196	57614.16	57994.56
5800	5037.5	385806.4	7079207	5767.44	57987.84
5800	5050	385807.2	7079218	5763.31	57982.81

**TYPHOON PROEPRTY
MAGNETIC SURVEY DATA**

Line	Station	X	Y	Raw_mag	Cor_mag
5800	5062.5	385808	7079230	5761.95	57989.55
5800	5075	385808.8	7079241	5769.4	57989
5800	5087.5	385809.6	7079252	5768.21	57988.31
5800	5100	385810.4	7079264	5767.75	57988.25
5800	5112.5	385811.2	7079275	5768.33	57989.93
5800	5125	385812	7079287	5764.5	57985.8
5800	5137.5	385812.8	7079298	5767.8	57989.2
5800	5150	385813.6	7079309	5761.26	57983.46
5800	5162.5	385814.4	7079321	576.88	57983.58
5800	5175	385815.1	7079332	5767.19	57990.19
5800	5187.5	385815.9	7079343	5762.18	57985.68
5800	5200	385816.7	7079355	5763.57	57987.27
5800	5212.5	385817.5	7079366	57611.3	57993.33
5800	5225	385818.3	7079377	576.59	57982.49
5800	5237.5	385819.1	7079389	5765.9	57986.59
5800	5250	385819.9	7079400	5769.7	57991.17
5800	5262.5	385820.7	7079411	5765.4	57988
5800	5275	385821.5	7079423	5765.48	57988.68
5800	5287.5	385822.3	7079434	57611.58	57993.58
5800	5300	385823.1	7079445	57613.4	57995.54
5800	5312.5	385823.9	7079457	57623.62	57996.72
5800	5325	385824.7	7079468	57622.39	57994.49
5800	5337.5	385825.5	7079480	57617.92	57989.02
5800	5350	385826.3	7079491	57618.8	57987.88
5800	5362.5	385827.1	7079502	57619.94	57989.14
5800	5375	385827.9	7079514	57619.88	57987.98
5800	5387.5	385828.7	7079525	57624.85	57991.25
5800	5400	385829.5	7079536	57626.37	57991.27
5800	5412.5	385830.3	7079548	57624	57988.4
5800	5425	385831.1	7079559	57627.91	57991.61
5800	5437.5	385831.9	7079570	57627.97	57991.17
5800	5450	385832.7	7079582	57628.99	57992.29
5800	5462.5	385833.5	7079593	57621.76	57984.06
5800	5475	385834.3	7079604	57627.57	57989.57
5800	5487.5	385835.1	7079616	57627.1	57988.51
5800	5500	385835.9	7079627	57631.14	57993.04
5800	5512.5	385836.6	7079638	57633.45	57994.55
5800	5525	385837.4	7079650	57629.92	57991.52
5800	5537.5	385838.2	7079661	57627.39	57990.09
5800	5550	385839	7079672	57628.17	57990.67
5800	5562.5	385839.8	7079684	5763.22	57992.32
5800	5575	385840.6	7079695	57633.54	57995.44
5800	5587.5	385841.4	7079707	57629.27	57990.47
5800	5600	385842.2	7079718	5763.74	57990.74
5800	5612.5	385843	7079729	57636.72	57996.92
5800	5625	385843.8	7079741	57632.66	57993.06
5800	5637.5	385844.6	7079752	57632.98	57994.38
5800	5650	385845.4	7079763	57634.43	57995.43
5800	5662.5	385846.2	7079775	5763.94	57991.74
5800	5675	385847	7079786	57629.98	57991.18
5800	5687.5	385847.8	7079797	5763.86	57992.06
5800	5700	385848.6	7079809	57629.37	57990.67
5800	5712.5	385849.4	7079820	5763.5	57991.9
5800	5725	385850.2	7079831	57628.6	57989.76
5800	5737.5	385851	7079843	57631.26	57993.36
5800	5750	385851.8	7079854	57626.26	57988.36
5800	5762.5	385852.6	7079865	57633.2	57995.72
5800	5775	385853.4	7079877	5763.85	57993.55
5800	5787.5	385854.2	7079888	57628.5	57991.6
5800	5800	385855	7079900	57628.9	57991.89
5800	5812.5	385855.8	7079911	57626.31	57990.91
5800	5825	385856.6	7079922	57628.55	57993.25
5800	5837.5	385857.4	7079934	57626.59	57991.49
5800	5850	385858.1	7079945	57629.7	57994.8
5800	5862.5	385858.9	7079956	57623.54	57988.64
5800	5875	385859.7	7079968	57624.13	57989.73
5800	5887.5	385860.5	7079979	57636.68	58001.48
5800	5900	385861.3	7079990	57627.97	57992.67

**TYPHOON PROEPRTY
MAGNETIC SURVEY DATA**

Line	Station	X	Y	Raw_mag	Cor_mag
5800	5912.5	385862.1	7080002	57625.34	57990.84
5800	5925	385862.9	7080013	57625.52	57990.42
5800	5937.5	385863.7	7080024	57625.11	57989.41
5800	5950	385864.5	7080036	57635.44	57999.14
5800	5962.5	385865.3	7080047	57628.88	57992.58
5800	5975	385866.1	7080058	57623.13	57986.63
5800	5987.5	385866.9	7080070	57628.46	57992.26
5800	6000	385867.7	7080081	57632.3	57996.33
5800	6012.5	385868.5	7080092	57628.53	57992.13
5800	6025	385869.3	7080104	57626.7	57988.57
5800	6037.5	385870.1	7080115	57629.9	57990.79
5800	6050	385870.9	7080127	57627.58	57989.58
5800	6062.5	385871.7	7080138	57629.21	57991.71
5800	6075	385872.5	7080149	57631.18	57993.48
5800	6087.5	385873.3	7080161	57622.8	57984.48
5800	6100	385874.1	7080172	57622.97	57985.87
5800	6112.5	385874.9	7080183	57628.48	57991.08
5800	6125	385875.7	7080195	57623.28	57986.48
5800	6137.5	385876.5	7080206	57625.18	57987.78
5800	6150	385877.3	7080217	57625.31	57988.31
5800	6162.5	385878.1	7080229	57627.33	57991.33
5800	6175	385878.9	7080240	57625.68	57989.48
5800	6187.5	385879.6	7080251	57626.96	57988.96
5800	6200	385880.4	7080263	57623.37	57985.47
5800	6212.5	385881.2	7080274	57625.25	57987.35
5800	6225	385882	7080285	57627.5	57989.45
5800	6237.5	385882.8	7080297	57629.92	57991.52
5800	6250	385883.6	7080308	57621.12	57983.42
5800	6262.5	385884.4	7080320	57627.17	57989.47
5800	6275	385885.2	7080331	57629.9	57992.59
5800	6287.5	385886	7080342	57627	57989.9
5800	6300	385886.8	7080354	57628.54	57991.14
5800	6312.5	385887.6	7080365	57622.26	57985.26
5800	6325	385888.4	7080376	57626.2	57989.72
5800	6337.5	385889.2	7080388	57625.83	57990.53
5800	6350	385890	7080399	5762.95	57983.95
6000	4550	386027	7078725	57579.97	57986.27
6000	4562.5	386026.7	7078737	57573.82	57981.82
6000	4575	386026.3	7078749	57581.64	57994.74
6000	4587.5	386026	7078761	57571.72	57987.12
6000	4600	386025.7	7078773	57577.3	57992.4
6000	4612.5	386025.3	7078786	57567.69	57985.29
6000	4625	386025	7078798	57562.06	57986.26
6000	4637.5	386024.7	7078810	57560.06	57990.96
6000	4650	386024.3	7078822	57551.6	57987.3
6000	4662.5	386024	7078834	57546.46	57984.16
6000	4675	386023.7	7078846	57544.01	57982.61
6000	4687.5	386023.3	7078858	57543.27	57981.87
6000	4700	386023	7078870	57545.31	57982.21
6000	4712.5	386022.7	7078882	57548.51	57982.81
6000	4725	386022.3	7078895	57543.96	57978.06
6000	4737.5	386022	7078907	57548.52	57983.02
6000	4750	386021.7	7078919	57546.27	57979.67
6000	4762.5	386021.3	7078931	57545.28	57977.78
6000	4775	386021	7078943	57551.86	57981.36
6000	4787.5	386020.7	7078955	57542.23	57973.53
6000	4800	386020.3	7078967	57549.22	57976.42
6000	4812.5	386020	7078979	57550.96	57978.96
6000	4825	386019.7	7078991	57552.54	57980.34
6000	4837.5	386019.3	7079004	57549.33	57977.73
6000	4850	386019	7079016	57551.57	57980.97
6000	4862.5	386018.7	7079028	57551.93	57982.03
6000	4875	386018.3	7079040	57555.88	57986.18
6000	4887.5	386018	7079052	57557.3	57988.1
6000	4900	386017.7	7079064	57556.57	57987.77
6000	4912.5	386017.3	7079076	57559.3	57989.6
6000	4925	386017	7079088	57570.82	58000.02
6000	4937.5	386016.7	7079100	57571.38	58000.48

**TYPHOON PROEPRTY
MAGNETIC SURVEY DATA**

Line	Station	X	Y	Raw_mag	Cor_mag
6000	4950	386016.3	7079113	57553.36	57983.36
6000	4962.5	386016	7079125	57556.21	57985.51
6000	4975	386015.7	7079137	57555.48	57985.08
6000	4987.5	386015.3	7079149	57555.06	57984.46
6000	5000	386015	7079161	57559.57	57991.97
6000	5012.5	386014.9	7079173	57666.91	57992.11
6000	5025	386014.7	7079186	57663.26	57989.26
6000	5037.5	386014.6	7079198	57663.62	57990.52
6000	5050	386014.5	7079211	57666.26	57994.26
6000	5062.5	386014.4	7079223	57664.6	57990.36
6000	5075	386014.2	7079236	57662.46	57987.96
6000	5087.5	386014.1	7079248	57662.73	57987.03
6000	5100	386014	7079260	5766.39	57983.69
6000	5112.5	386013.8	7079273	57665.43	57987.83
6000	5125	386013.7	7079285	57657.36	57978.56
6000	5137.5	386013.6	7079298	57665.67	57986.67
6000	5150	386013.4	7079310	57671.88	57991.58
6000	5162.5	386013.3	7079323	57663.91	57982.81
6000	5175	386013.2	7079335	57672.15	57990.95
6000	5187.5	386013.1	7079347	57664.75	57983.55
6000	5200	386012.9	7079360	57672.41	57991.51
6000	5212.5	386012.8	7079372	57671.39	57990.69
6000	5225	386012.7	7079385	57671.48	57991.48
6000	5237.5	386012.5	7079397	57667.7	57987.8
6000	5250	386012.4	7079410	57674.28	57995.18
6000	5262.5	386012.3	7079422	5767.91	57992.01
6000	5275	386012.1	7079434	57676.87	57998.47
6000	5287.5	386012	7079447	57673.21	57995.01
6000	5300	386011.9	7079459	57665.6	57990.06
6000	5312.5	386011.8	7079472	57662.14	57988.14
6000	5325	386011.6	7079484	57662.53	57989.73
6000	5337.5	386011.5	7079497	57662.42	57991.02
6000	5350	386011.4	7079509	57656.45	57984.15
6000	5362.5	386011.2	7079521	57661.64	57989.24
6000	5375	386011.1	7079534	57661.5	57991.15
6000	5387.5	386011	7079546	57661.3	57993.3
6000	5400	386010.9	7079559	5766.3	57992.4
6000	5412.5	386010.7	7079571	57662.82	57994.12
6000	5425	386010.6	7079583	57661.51	57993.31
6000	5437.5	386010.5	7079596	57665.23	57997.33
6000	5450	386010.3	7079608	5767.2	58003.02
6000	5462.5	386010.2	7079621	57665.82	58000.72
6000	5475	386010.1	7079633	57658.98	57994.98
6000	5487.5	386009.9	7079646	57653.99	57991.49
6000	5500	386009.8	7079658	57657.53	57995.93
6000	5512.5	386009.7	7079670	57655.24	57994.44
6000	5525	386009.6	7079683	57657.54	57997.54
6000	5537.5	386009.4	7079695	57654.18	57995.58
6000	5550	386009.3	7079708	57645.68	57988.58
6000	5562.5	386009.2	7079720	57651.85	57996.35
6000	5575	386009	7079733	57657.15	58003.75
6000	5587.5	386008.9	7079745	57656.96	58005.16
6000	5600	386008.8	7079757	57661.64	58012.04
6000	5612.5	386008.6	7079770	57661.35	58012.75
6000	5625	386008.5	7079782	57659.4	58010.94
6000	5637.5	386008.4	7079795	57652.86	58005.36
6000	5650	386008.3	7079807	57648.39	58000.99
6000	5662.5	386008.1	7079820	57643.81	57997.41
6000	5675	386008	7079832	5764.45	57995.25
6000	5687.5	386007.9	7079844	57637.82	57993.82
6000	5700	386007.7	7079857	57636.16	57993.06
6000	5712.5	386007.6	7079869	57636.68	57993.38
6000	5725	386007.5	7079882	57635.11	57990.81
6000	5737.5	386007.4	7079894	57638.38	57993.38
6000	5750	386007.2	7079907	57634.92	57989.12
6000	5762.5	386007.1	7079919	57637.4	57991.5
6000	5775	386007	7079931	57641.24	57996.24
6000	5787.5	386006.8	7079944	57638.25	57995.05

**TYPHOON PROEPRTY
MAGNETIC SURVEY DATA**

Line	Station	X	Y	Raw_mag	Cor_mag
6000	5800	386006.7	7079956	57629.94	57987.34
6000	5812.5	386006.6	7079969	57635.65	57993.95
6000	5825	386006.4	7079981	57633.94	57993.04
6000	5837.5	386006.3	7079994	57635.93	57993.43
6000	5850	386006.2	7080006	57638.11	57996.01
6000	5862.5	386006.1	7080018	57636	57994
6000	5875	386005.9	7080031	57634.28	57994.18
6000	5887.5	386005.8	7080043	57638.6	57998.66
6000	5900	386005.7	7080056	57634.93	57998.23
6000	5912.5	386005.5	7080068	57636.8	57998.18
6000	5925	386005.4	7080081	57632.4	57993.54
6000	5937.5	386005.3	7080093	57631.57	57992.47
6000	5950	386005.1	7080105	57632.43	57992.73
6000	5962.5	386005	7080118	57629.96	57991.66
6000	5975	386004.9	7080130	57626.29	57988.59
6000	5987.5	386004.8	7080143	57628.4	57990.24
6000	6000	386004.6	7080155	57624.61	57986.81
6000	6012.5	386004.5	7080168	57631.46	57993.46
6000	6025	386004.4	7080180	57632.46	57993.76
6000	6037.5	386004.2	7080192	57628.74	57990.94
6000	6050	386004.1	7080205	5763.1	57993.31
6000	6062.5	386004	7080217	57636.31	58001.91
6000	6075	386003.9	7080230	57622.73	57988.13
6000	6087.5	386003.7	7080242	57623.31	57989.41
6000	6100	386003.6	7080254	57629.61	57995.31
6000	6112.5	386003.5	7080267	57627.38	57993.38
6000	6125	386003.3	7080279	57628.9	57996.8
6000	6137.5	386003.2	7080292	57625.29	57993.39
6000	6150	386003.1	7080304	5763.45	57997.65
6000	6162.5	386002.9	7080317	5762.66	57986.26
6000	6175	386002.8	7080329	57629.21	57996.01
6000	6187.5	386002.7	7080341	57627.75	57995.55
6000	6200	386002.6	7080354	57625	57993.7
6000	6212.5	386002.4	7080366	57624.89	57993.19
6000	6225	386002.3	7080379	5763.87	57998.17
6000	6237.5	386002.2	7080391	57628.51	57996.31
6000	6250	386002	7080404	57622.36	57990.56
6000	6262.5	386001.9	7080416	57621.12	57988.72
6000	6275	386001.8	7080428	57625.69	57993.69
6000	6287.5	386001.6	7080441	57627.74	57996.04
6000	6300	386001.5	7080453	57629.25	57997.45
6000	6312.5	386001.4	7080466	57629.14	57997.34
6000	6325	386001.3	7080478	57628.79	57996.99
6000	6337.5	386001.1	7080491	57628.92	57996.62
6000	6350	386001	7080503	57623.34	57992.04
6200	4550	386210	7078718	57611.86	57988.76
6200	4562.5	386209.8	7078730	57601.96	57977.26
6200	4575	386209.7	7078742	57606.23	57981.93
6200	4587.5	386209.5	7078755	57609.67	57986.67
6200	4600	386209.3	7078767	57594.13	57970.93
6200	4612.5	386209.2	7078779	57594.57	57970.37
6200	4625	386209	7078791	57599.65	57973.65
6200	4637.5	386208.8	7078803	57597.53	57969.73
6200	4650	386208.7	7078816	57597.85	57969.85
6200	4662.5	386208.5	7078828	57599.48	57969.88
6200	4675	386208.3	7078840	57602.36	57972.76
6200	4687.5	386208.2	7078852	57610.25	57979.55
6200	4700	386208	7078864	57609.72	57979.62
6200	4712.5	386207.8	7078877	57598.48	57969.78
6200	4725	386207.7	7078889	57593.54	57964.94
6200	4737.5	386207.5	7078901	57600.65	57969.85
6200	4750	386207.3	7078913	57603.5	57972
6200	4762.5	386207.2	7078925	57600.48	57966.98
6200	4775	386207	7078937	57612.4	57977.7
6200	4787.5	386206.8	7078950	57620.69	57984.99
6200	4800	386206.7	7078962	57612.92	57976.32
6200	4812.5	386206.5	7078974	57609.27	57970.57
6200	4825	386206.3	7078986	57603.9	57965.3

**TYPHOON PROEPRTY
MAGNETIC SURVEY DATA**

Line	Station	X	Y	Raw_mag	Cor_mag
6200	4837.5	386206.2	7078998	57622.41	57985.11
6200	4850	386206	7079011	57631.79	57992.69
6200	4862.5	386205.8	7079023	57623.51	57982.31
6200	4875	386205.7	7079035	57626.82	57986.72
6200	4887.5	386205.5	7079047	57628.11	57988.01
6200	4900	386205.3	7079059	57630.88	57988.98
6200	4912.5	386205.2	7079072	57631.53	57988.83
6200	4925	386205	7079084	57635.49	57993.29
6200	4937.5	386204.8	7079096	57633.33	57993.03
6200	4950	386204.7	7079108	57633.14	57992.94
6200	4962.5	386204.5	7079120	57607.05	58000.05
6200	4975	386204.3	7079133	57604.69	57998.49
6200	4987.5	386204.2	7079145	57599.49	57993.69
6200	5000	386204	7079157	57606.75	58000.55
6200	5012.5	386204	7079170	57609.99	58003.59
6200	5025	386203.9	7079182	57598.73	57990.63
6200	5037.5	386203.9	7079195	57605.04	57997.54
6200	5050	386203.9	7079207	57597.12	57993.12
6200	5062.5	386203.8	7079220	57594.23	57994.73
6200	5075	386203.8	7079232	57587.63	57992.43
6200	5087.5	386203.7	7079245	57583.97	57989.47
6200	5100	386203.7	7079258	57588.03	57992.13
6200	5112.5	386203.7	7079270	57590.18	57993.38
6200	5125	386203.6	7079283	57586.97	57984.67
6200	5137.5	386203.6	7079295	57600.06	57995.56
6200	5150	386203.6	7079308	57599.26	57992.46
6200	5162.5	386203.5	7079320	57604.37	57997.97
6200	5175	386203.5	7079333	57607.01	58001.11
6200	5187.5	386203.4	7079346	57597.44	57990.14
6200	5200	386203.4	7079358	57604.3	57995.9
6200	5212.5	386203.4	7079371	57607.15	57997.15
6200	5225	386203.3	7079383	57601.74	57989.74
6200	5237.5	386203.3	7079396	57611.01	57997.61
6200	5250	386203.3	7079408	57608.36	57993.46
6200	5262.5	386203.2	7079421	57615.85	58001.75
6200	5275	386203.2	7079434	57610.07	57997.17
6200	5287.5	386203.1	7079446	57615.93	58004.13
6200	5300	386203.1	7079459	57619.97	58009.47
6200	5312.5	386203.1	7079471	57618.27	58008.47
6200	5325	386203	7079484	57614.12	58004.52
6200	5337.5	386203	7079496	57616.02	58006.82
6200	5350	386203	7079509	57617.51	58008.81
6200	5362.5	386202.9	7079522	57617.78	58007.88
6200	5375	386202.9	7079534	57615.02	58005.32
6200	5387.5	386202.9	7079547	57612.13	58001.63
6200	5400	386202.8	7079559	57610.12	57999.32
6200	5412.5	386202.8	7079572	57621.32	58009.22
6200	5425	386202.7	7079585	57617.43	58004.33
6200	5437.5	386202.7	7079597	57612.85	57997.75
6200	5450	386202.7	7079610	57621.28	58004.88
6200	5462.5	386202.6	7079622	57623.8	58007.6
6200	5475	386202.6	7079635	57621.99	58007.29
6200	5487.5	386202.6	7079647	57631.05	58016.75
6200	5500	386202.5	7079660	57625.26	58010.56
6200	5512.5	386202.5	7079673	57615.93	58001.43
6200	5525	386202.4	7079685	57616.29	58000.89
6200	5537.5	386202.4	7079698	57612.09	57996.69
6200	5550	386202.4	7079710	57609.85	57993.75
6200	5562.5	386202.3	7079723	57611.55	57994.25
6200	5575	386202.3	7079735	57613.08	57995.38
6200	5587.5	386202.3	7079748	57616.95	57997.55
6200	5600	386202.2	7079761	57616.66	57995.66
6200	5612.5	386202.2	7079773	57610.24	57989.94
6200	5625	386202.1	7079786	57610.48	57991.78
6200	5637.5	386202.1	7079798	57602.18	57985.08
6200	5650	386202.1	7079811	57606.38	57990.78
6200	5662.5	386202	7079823	57606.16	57991.36
6200	5675	386202	7079836	57604.06	57989.56

**TYPHOON PROEPRTY
MAGNETIC SURVEY DATA**

Line	Station	X	Y	Raw_mag	Cor_mag
6200	5687.5	386202	7079849	57599.95	57985.55
6200	5700	386201.9	7079861	57608.98	57993.08
6200	5712.5	386201.9	7079874	57607.74	57991.94
6200	5725	386201.9	7079886	57605.65	57989.85
6200	5737.5	386201.8	7079899	57610.27	57994.57
6200	5750	386201.8	7079911	57608.83	57993.03
6200	5762.5	386201.7	7079924	57613.47	57997.67
6200	5775	386201.7	7079937	57614.23	57997.13
6200	5787.5	386201.7	7079949	57611.17	57993.27
6200	5800	386201.6	7079962	57608.05	57990.15
6200	5812.5	386201.6	7079974	57609.56	57991.66
6200	5825	386201.6	7079987	57612.58	57995.28
6200	5837.5	386201.5	7079999	57618.76	58001.66
6200	5850	386201.5	7080012	57615.01	57997.51
6200	5862.5	386201.4	7080025	57616.77	58000.57
6200	5875	386201.4	7080037	57609.26	57995.36
6200	5887.5	386201.4	7080050	57612.9	57999.7
6200	5900	386201.3	7080062	57611.33	57997.63
6200	5912.5	386201.3	7080075	57611.9	57998.5
6200	5925	386201.3	7080087	57607.6	57994.4
6200	5937.5	386201.2	7080100	57614.64	58002.04
6200	5950	386201.2	7080113	57607.91	57996.81
6200	5962.5	386201.1	7080125	57610.27	57999.37
6200	5975	386201.1	7080138	57611.7	57999.3
6200	5987.5	386201.1	7080150	57611.17	57998.67
6200	6000	386201	7080163	57612.57	58000.27
6200	6012.5	386201	7080175	57611.15	57999.25
6200	6025	386201	7080188	57610.2	57997.6
6200	6037.5	386200.9	7080201	57602.76	57991.16
6200	6050	386200.9	7080213	57609.99	57995.49
6200	6062.5	386200.9	7080226	57610.82	57993.62
6200	6075	386200.8	7080238	57617.58	57996.48
6200	6087.5	386200.8	7080251	57616.72	57996.62
6200	6100	386200.7	7080264	57616.27	57996.97
6200	6112.5	386200.7	7080276	57608.23	57989.23
6200	6125	386200.7	7080289	57616.35	57996.05
6200	6137.5	386200.6	7080301	57618.62	57997.82
6200	6150	386200.6	7080314	57611.82	57991.72
6200	6162.5	386200.6	7080326	57611.95	57990.85
6200	6175	386200.5	7080339	57615.71	57994.91
6200	6187.5	386200.5	7080352	57617.54	57996.94
6200	6200	386200.4	7080364	57612.51	57990.31
6200	6212.5	386200.4	7080377	57619.65	57994.65
6200	6225	386200.4	7080389	57618.24	57994.54
6200	6237.5	386200.3	7080402	57620.55	57998.35
6200	6250	386200.3	7080414	57616.33	57992.73
6200	6262.5	386200.3	7080427	57625.14	57998.84
6200	6275	386200.2	7080440	57620.67	57990.47
6200	6287.5	386200.2	7080452	57620.71	57992.81
6200	6300	386200.1	7080465	57620.3	57994.5
6200	6312.5	386200.1	7080477	57620.57	57993.97
6200	6325	386200.1	7080490	57623.79	57994.39
6200	6337.5	386200	7080502	57627.42	57997.22
6200	6350	386200	7080515	57618.59	57987.49
6400	4550	386398	7078751	57586.05	57982.85
6400	4587.5	386399.5	7078788	57597.81	57994.21
6400	4600	386400	7078800	57595.34	57991.94
6400	4612.5	386400.5	7078813	57594.39	57991.69
6400	4625	386401	7078825	57594.87	57992.27
6400	4637.5	386401.5	7078838	57598.91	57996.41
6400	4650	386402	7078850	57598.69	57995.89
6400	4662.5	386402.5	7078862	57599.85	57996.85
6400	4675	386403	7078875	57594.23	57991.13
6400	4687.5	386403.5	7078887	57587.65	57984.15
6400	4700	386404	7078899	57597.87	57994.27
6400	4712.5	386404.5	7078912	57594.13	57990.03
6400	4725	386405	7078924	57603.53	58000.43
6400	4737.5	386405.5	7078936	57597.42	57994.32

**TYPHOON PROEPRTY
MAGNETIC SURVEY DATA**

Line	Station	X	Y	Raw_mag	Cor_mag
6400	4750	386406	7078949	57492.17	57887.97
6400	4762.5	386406.5	7078961	57591.47	57988.77
6400	4775	386407	7078974	57597.51	57993.71
6400	4787.5	386407.5	7078986	57593.98	57989.58
6400	4800	386408	7078998	57587.5	57983.3
6400	4812.5	386408.5	7079011	57594.07	57990.17
6400	4825	386409	7079023	57594.98	57990.98
6400	4837.5	386409.5	7079035	57589.78	57984.18
6400	4850	386410	7079048	57593.95	57988.15
6400	4862.5	386410.5	7079060	57585	57979.9
6400	4875	386411	7079072	57597.64	57993.14
6400	4887.5	386411.5	7079085	57599.42	57994.42
6400	4900	386412	7079097	57595.08	57989.88
6400	4912.5	386412.5	7079109	57589.89	57984.59
6400	4925	386413	7079122	57587.58	57982.78
6400	4937.5	386413.5	7079134	57592.62	57987.62
6400	4950	386414	7079147	57586.56	57980.96
6400	4962.5	386414.5	7079159	57589.56	57983.96
6400	4975	386415	7079171	57597.69	57991.79
6400	4987.5	386415.5	7079184	57586.5	57980.2
6400	5000	386416	7079196	57599.2	57993
6400	5012.5	386415.8	7079208	57590.76	57983.86
6400	5025	386415.7	7079220	57597.23	57992.23
6400	5037.5	386415.5	7079233	57585.07	57980.27
6400	5050	386415.4	7079245	57586.94	57981.04
6400	5062.5	386415.2	7079257	57594.79	57987.59
6400	5075	386415.1	7079269	57594.28	57987.68
6400	5087.5	386414.9	7079281	57601.99	57995.09
6400	5100	386414.7	7079294	57598.65	57991.65
6400	5112.5	386414.6	7079306	57598.76	57992.06
6400	5125	386414.4	7079318	57600.03	57992.93
6400	5137.5	386414.3	7079330	57601.53	57994.63
6400	5150	386414.1	7079342	57596.56	57991.16
6400	5162.5	386414	7079355	57601.43	57996.63
6400	5175	386413.8	7079367	57594.65	57990.15
6400	5187.5	386413.6	7079379	57596.44	57990.64
6400	5200	386413.5	7079391	57597.78	57990.48
6400	5212.5	386413.3	7079403	57608.17	58001.27
6400	5225	386413.2	7079415	57606.67	57998.07
6400	5237.5	386413	7079428	57608.8	58001.3
6400	5250	386412.9	7079440	57606.67	57998.77
6400	5262.5	386412.7	7079452	57605.6	57998
6400	5275	386412.5	7079464	57613.84	58006.04
6400	5287.5	386412.4	7079476	57617.75	58009.45
6400	5300	386412.2	7079489	57616.96	58008.36
6400	5312.5	386412.1	7079501	57609.44	57999.54
6400	5325	386411.9	7079513	57611.67	58001.27
6400	5337.5	386411.8	7079525	57610.54	58001.44
6400	5350	386411.6	7079537	57615.06	58004.26
6400	5362.5	386411.4	7079550	57611.69	58000.59
6400	5375	386411.3	7079562	57614.99	58003.29
6400	5387.5	386411.1	7079574	57615.16	58004.36
6400	5400	386411	7079586	57618.19	58006.79
6400	5412.5	386410.8	7079598	57614.42	58003.32
6400	5425	386410.6	7079611	57611.65	57999.15
6400	5437.5	386410.5	7079623	57607.66	57993.56
6400	5450	386410.3	7079635	57614.46	58002.86
6400	5462.5	386410.2	7079647	57612.81	57999.11
6400	5475	386410	7079659	57613.24	57998.74
6400	5487.5	386409.9	7079672	57612.63	57997.23
6400	5500	386409.7	7079684	57603.52	57987.72
6400	5512.5	386409.5	7079696	57614.64	57998.24
6400	5525	386409.4	7079708	57611.47	57995.07
6400	5537.5	386409.2	7079720	57608.19	57992.59
6400	5550	386409.1	7079733	57609.59	57993.39
6400	5562.5	386408.9	7079745	57610.75	57994.35
6400	5575	386408.8	7079757	57612.7	57995.6
6400	5587.5	386408.6	7079769	57615.01	57997.71

**TYPHOON PROEPRTY
MAGNETIC SURVEY DATA**

Line	Station	X	Y	Raw_mag	Cor_mag
6400	5600	386408.4	7079781	57614.6	57997.6
6400	5612.5	386408.3	7079794	57615.58	57998.98
6400	5625	386408.1	7079806	57614.54	57998.34
6400	5637.5	386408	7079818	57616.34	57999.54
6400	5650	386407.8	7079830	57610.92	57993.92
6400	5662.5	386407.7	7079842	57612.55	57995.75
6400	5675	386407.5	7079854	57609.13	57991.53
6400	5687.5	386407.3	7079867	57613.26	57994.66
6400	5700	386407.2	7079879	57615.72	57996.92
6400	5712.5	386407	7079891	57618.11	57998.31
6400	5725	386406.9	7079903	57620.73	58000.53
6400	5737.5	386406.7	7079915	57620.44	57999.74
6400	5750	386406.6	7079928	57625.34	58006.04
6400	5762.5	386406.4	7079940	57633.41	58013.41
6400	5775	386406.2	7079952	57613.88	57993.68
6400	5787.5	386406.1	7079964	57620.33	57999.03
6400	5800	386405.9	7079976	57616.14	57993.74
6400	5812.5	386405.8	7079989	57618.17	57996.07
6400	5825	386405.6	7080001	57612.64	57990.04
6400	5837.5	386405.5	7080013	57619.27	57996.17
6400	5850	386405.3	7080025	57634.87	58011.07
6400	5862.5	386405.1	7080037	57631.92	58008.02
6400	5875	386405	7080050	57632.46	58009.46
6400	5887.5	386404.8	7080062	57628.71	58006.21
6400	5900	386404.7	7080074	57624.07	58001.77
6400	5912.5	386404.5	7080086	57627.3	58004.9
6400	5925	386404.4	7080098	57630.77	58008.67
6400	5937.5	386404.2	7080111	57631.06	58009.46
6400	5950	386404	7080123	57637.1	58016.4
6400	5962.5	386403.9	7080135	57639.09	58019.29
6400	5975	386403.7	7080147	57642.28	58021.58
6400	5987.5	386403.6	7080159	57642.99	58022.09
6400	6000	386403.4	7080172	57638.11	58017.71
6400	6012.5	386403.2	7080184	57648.35	58029.25
6400	6025	386403.1	7080196	57642.22	58022.82
6400	6037.5	386402.9	7080208	57642.91	58024.61
6400	6050	386402.8	7080220	57639.26	58020.86
6400	6062.5	386402.6	7080233	57634.5	58016.6
6400	6075	386402.5	7080245	57629.78	58012.08
6400	6087.5	386402.3	7080257	57624.16	58006.76
6400	6100	386402.1	7080269	57620.93	58004.93
6400	6112.5	386402	7080281	57619.5	58006.3
6400	6125	386401.8	7080293	57616.98	58005.88
6400	6137.5	386401.7	7080306	57612.11	58001.31
6400	6150	386401.5	7080318	57614	58002.8
6400	6162.5	386401.4	7080330	57613.42	58001.22
6400	6175	386401.2	7080342	57613.73	58001.83
6400	6187.5	386401	7080354	57605.05	57996.75
6400	6200	386400.9	7080367	57599.45	57995.95
6400	6212.5	386400.7	7080379	57594.43	57993.03
6400	6225	386400.6	7080391	57595.76	57995.56
6400	6237.5	386400.4	7080403	57592.44	57992.84
6400	6250	386400.3	7080415	57596.76	57996.46
6400	6262.5	386400.1	7080428	57595.52	57995.52
6400	6275	386399.9	7080440	57594.67	57994.27
6400	6287.5	386399.8	7080452	57599.76	57998.06
6400	6300	386399.6	7080464	57596.11	57992.41
6400	6312.5	386399.5	7080476	57603.04	57997.14
6400	6325	386399.3	7080489	57603.33	57995.93
6400	6337.5	386399.2	7080501	57605.19	57997.49
6400	6350	386399	7080513	57603.7	57996.8
6600	4550	386616	7078733	57576.06	57975.06
6600	4562.5	386615.2	7078746	57593.06	57991.36
6600	4575	386614.4	7078758	57590.06	57987.96
6600	4587.5	386613.7	7078771	57591.08	57988.88
6600	4600	386612.9	7078783	57588.37	57985.87
6600	4612.5	386612.1	7078796	57586.48	57985.08
6600	4625	386611.3	7078808	57594.84	57993.54

**TYPHOON PROEPRTY
MAGNETIC SURVEY DATA**

Line	Station	X	Y	Raw_mag	Cor_mag
6600	4637.5	386610.6	7078821	57594.41	57993.01
6600	4650	386609.8	7078833	57594.03	57992.53
6600	4662.5	386609	7078846	57593.3	57992
6600	4675	386608.2	7078858	57599.52	57998.72
6600	4687.5	386607.4	7078871	57594.69	57995.09
6600	4700	386606.7	7078883	57595.85	57995.85
6600	4712.5	386605.9	7078896	57592.52	57992.42
6600	4725	386605.1	7078908	57593.83	57992.93
6600	4737.5	386604.3	7078921	57592.87	57991.77
6600	4750	386603.6	7078933	57592.86	57990.76
6600	4762.5	386602.8	7078946	57587.76	57985.66
6600	4775	386602	7078959	57590.36	57988.36
6600	4787.5	386601.2	7078971	57585.82	57983.22
6600	4800	386600.4	7078984	57586.9	57984.1
6600	4812.5	386599.7	7078996	57586.1	57982.6
6600	4825	386598.9	7079009	57587.47	57983.37
6600	4837.5	386598.1	7079021	57589.1	57985.7
6600	4850	386597.3	7079034	57589.53	57986.13
6600	4862.5	386596.6	7079046	57586.49	57983.39
6600	4875	386595.8	7079059	57586.71	57985.01
6600	4887.5	386595	7079071	57581.35	57979.35
6600	4900	386594.2	7079084	57586.48	57985.28
6600	4912.5	386593.4	7079096	57583.39	57981.89
6600	4925	386592.7	7079109	57586.33	57984.63
6600	4937.5	386591.9	7079121	57589.1	57987.7
6600	4950	386591.1	7079134	57582.71	57980.41
6600	4962.5	386590.3	7079146	57581.3	57979.2
6600	4975	386589.6	7079159	57581.67	57979.67
6600	4987.5	386588.8	7079171	57589.59	57988.79
6600	5000	386588	7079184	57605.06	58003.16
6600	5012.5	386588.1	7079196	57593.8	57991.5
6600	5025	386588.2	7079208	57603.31	58000.91
6600	5037.5	386588.3	7079219	57604.46	58003.06
6600	5050	386588.4	7079231	57606.25	58004.75
6600	5062.5	386588.5	7079243	57614.28	58004.98
6600	5075	386588.6	7079255	57616.14	58006.44
6600	5087.5	386588.7	7079267	57611.44	58000.74
6600	5100	386588.8	7079278	57612.18	58000.88
6600	5112.5	386588.9	7079290	57600.99	57989.29
6600	5125	386589	7079302	57600.9	57989.6
6600	5137.5	386589.1	7079314	57596.07	57984.47
6600	5150	386589.2	7079326	57601.94	57990.94
6600	5162.5	386589.3	7079337	57601.2	57988.9
6600	5175	386589.4	7079349	57600.59	57988.69
6600	5187.5	386589.5	7079361	57602.66	57989.76
6600	5200	386589.6	7079373	57607.52	57993.52
6600	5212.5	386589.7	7079385	57608.87	57994.27
6600	5225	386589.8	7079396	57609.72	57995.02
6600	5237.5	386589.9	7079408	57611.1	57996
6600	5250	386590	7079420	57607.33	57991.83
6600	5262.5	386590.1	7079432	57607.39	57991.99
6600	5275	386590.2	7079444	57604.81	57988.91
6600	5287.5	386590.3	7079455	57602.09	57984.79
6600	5300	386590.4	7079467	57606.45	57988.55
6600	5312.5	386590.5	7079479	57608.03	57989.13
6600	5325	386590.6	7079491	57597.56	57978.66
6600	5337.5	386590.8	7079503	57605.86	57986.36
6600	5350	386590.9	7079514	57603.06	57983.36
6600	5362.5	386591	7079526	57604.54	57983.94
6600	5375	386591.1	7079538	57605.29	57984.09
6600	5387.5	386591.2	7079550	57604.36	57983.66
6600	5400	386591.3	7079561	57606.12	57984.22
6600	5412.5	386591.4	7079573	57605.97	57983.47
6600	5425	386591.5	7079585	57602.75	57978.95
6600	5437.5	386591.6	7079597	57607.1	57982.6
6600	5450	386591.7	7079609	57610.13	57985.53
6600	5462.5	386591.8	7079620	57604.87	57979.47
6600	5475	386591.9	7079632	57609.43	57982.93

**TYPHOON PROEPRTY
MAGNETIC SURVEY DATA**

Line	Station	X	Y	Raw_mag	Cor_mag
6600	5487.5	386592	7079644	57606.85	57980.35
6600	5500	386592.1	7079656	57613.87	57986.77
6600	5512.5	386592.2	7079668	57617.78	57990.38
6600	5525	386592.3	7079679	57613.24	57984.14
6600	5537.5	386592.4	7079691	57613.71	57984.71
6600	5550	386592.5	7079703	57610.82	57980.72
6600	5562.5	386592.6	7079715	57617.43	57987.33
6600	5575	386592.7	7079727	57612.48	57981.98
6600	5587.5	386592.8	7079738	57613.69	57982.09
6600	5600	386592.9	7079750	57617.81	57986.21
6600	5612.5	386593	7079762	57616.21	57984.31
6600	5625	386593.1	7079774	57617.9	57985.4
6600	5637.5	386593.2	7079786	57619.17	57986.47
6600	5650	386593.3	7079797	57623.72	57990.62
6600	5662.5	386593.4	7079809	57623.04	57990.04
6600	5675	386593.5	7079821	57621.77	57989.27
6600	5687.5	386593.6	7079833	57620.54	57988.24
6600	5700	386593.7	7079845	57622.86	57990.46
6600	5712.5	386593.8	7079856	57625.66	57993.66
6600	5725	386593.9	7079868	57627.74	57995.64
6600	5737.5	386594	7079880	57626.34	57994.14
6600	5750	386594.1	7079892	57628.4	57995.3
6600	5762.5	386594.2	7079904	57624.56	57992.06
6600	5775	386594.3	7079915	57625.04	57994.24
6600	5787.5	386594.4	7079927	57629.33	57997.13
6600	5800	386594.5	7079939	57632.34	58000.34
6600	5812.5	386594.6	7079951	57632.71	58000.81
6600	5825	386594.7	7079963	57631.88	58000.98
6600	5837.5	386594.8	7079974	57640.03	58009.43
6600	5850	386594.9	7079986	57627.93	57997.53
6600	5862.5	386595	7079998	57624.07	57993.37
6600	5875	386595.1	7080010	57628.34	57997.04
6600	5887.5	386595.2	7080022	57629.47	57998.87
6600	5900	386595.3	7080033	57628.16	57997.16
6600	5912.5	386595.4	7080045	57630.15	57999.55
6600	5925	386595.5	7080057	57628.39	57997.29
6600	5937.5	386595.6	7080069	57634.62	58004.12
6600	5950	386595.7	7080081	57631.45	58000.55
6600	5962.5	386595.8	7080092	57631.29	57999.69
6600	5975	386595.9	7080104	57631.57	58000.17
6600	5987.5	386596	7080116	57635.16	58003.06
6600	6000	386596.1	7080128	57634.48	58002.08
6600	6012.5	386596.3	7080140	57638.66	58005.66
6600	6025	386596.4	7080151	57639.98	58006.48
6600	6037.5	386596.5	7080163	57643.71	58010.01
6600	6050	386596.6	7080175	57636.83	58003.43
6600	6062.5	386596.7	7080187	57646.12	58012.02
6600	6075	386596.8	7080198	57644.63	58011.33
6600	6087.5	386596.9	7080210	57643.1	58009.3
6600	6100	386597	7080222	57644.44	58010.44
6600	6112.5	386597.1	7080234	57644.6	58010.1
6600	6125	386597.2	7080246	57648.91	58014.51
6600	6137.5	386597.3	7080257	57641.08	58008.08
6600	6150	386597.4	7080269	57644.36	58011.36
6600	6162.5	386597.5	7080281	57643.13	58009.33
6600	6175	386597.6	7080293	57634.09	58000.59
6600	6187.5	386597.7	7080305	57635.15	58001.45
6600	6200	386597.8	7080316	57632.37	57998.57
6600	6212.5	386597.9	7080328	57633.69	58000.39
6600	6225	386598	7080340	57633.44	58000.54
6600	6237.5	386598.1	7080352	57628.11	57995.41
6600	6250	386598.2	7080364	57629.01	57997.01
6600	6262.5	386598.3	7080375	57624.9	57993.4
6600	6275	386598.4	7080387	57625.91	57994.41
6600	6287.5	386598.5	7080399	57618.44	57986.64
6600	6300	386598.6	7080411	57621.7	57989.6
6600	6312.5	386598.7	7080423	57621.2	57988.5
6600	6325	386598.8	7080434	57630.24	57999.04

**TYPHOON PROEPRTY
MAGNETIC SURVEY DATA**

Line	Station	X	Y	Raw_mag	Cor_mag
6800	6337.5	386598.9	7080446	57623.72	57991.12
6800	6350	386599	7080458	57622.52	57989.02
6800	4550	386826	7078716	57625.85	57998.85
6800	4562.5	386824.9	7078728	57620.07	57990.37
6800	4575	386823.9	7078739	57622.29	57991.49
6800	4587.5	386822.8	7078751	57622.57	57990.77
6800	4600	386821.8	7078763	57625.18	57992.08
6800	4612.5	386820.7	7078774	57624.12	57990.42
6800	4625	386819.7	7078786	57625.51	57995.51
6800	4637.5	386818.6	7078798	57622.52	57987.32
6800	4650	386817.6	7078809	57626.81	57991.31
6800	4662.5	386816.5	7078821	57629.6	57991.7
6800	4675	386815.4	7078833	57633.56	57994.56
6800	4687.5	386814.4	7078844	57636.7	57997.1
6800	4700	386813.3	7078856	57638.33	57996.93
6800	4712.5	386812.3	7078868	57638.92	57997.32
6800	4725	386811.2	7078879	57641	57997.4
6800	4737.5	386810.2	7078891	57643.12	57998.82
6800	4750	386809.1	7078903	57644.19	57999.89
6800	4762.5	386808.1	7078914	57644.6	57999.5
6800	4775	386807	7078926	57641.36	57995.76
6800	4787.5	386805.9	7078938	57646.24	57999.94
6800	4800	386804.9	7078949	57645.36	57999.26
6800	4812.5	386803.8	7078961	57646.22	57999.22
6800	4825	386802.8	7078973	57646.1	57997.9
6800	4837.5	386801.7	7078984	57648.6	58000.3
6800	4850	386800.7	7078996	57642.13	57993.83
6800	4862.5	386799.6	7079008	57643.4	57995.5
6800	4875	386798.6	7079019	57642.63	57993.63
6800	4887.5	386797.5	7079031	57648.25	58000.25
6800	4900	386796.4	7079043	57645.14	57996.44
6800	4912.5	386795.4	7079054	57639.17	57991.77
6800	4925	386794.3	7079066	57639.64	57993.34
6800	4937.5	386793.3	7079078	57627	57981.4
6800	4950	386792.2	7079089	57629.59	57986.09
6800	4962.5	386791.2	7079101	57632.87	57991.07
6800	4975	386790.1	7079113	57637.07	57993.67
6800	4987.5	386789.1	7079124	57628.99	57986.49
6800	5000	386788	7079136	57632.47	57992.87
6800	5012.5	386788.3	7079148	57616.18	57978.18
6800	5025	386788.6	7079160	57595.94	57958.94
6800	5037.5	386788.9	7079173	57605.16	57969.06
6800	5050	386789.2	7079185	57612.38	57977.38
6800	5062.5	386789.5	7079197	57619.72	57986.92
6800	5075	386789.8	7079209	57615.54	57982.14
6800	5087.5	386790.1	7079221	57617.41	57983.51
6800	5100	386790.4	7079234	57623.98	57990.38
6800	5112.5	386790.7	7079246	57631.95	57998.85
6800	5125	386791	7079258	57624.01	57991.21
6800	5137.5	386791.3	7079270	57624.16	57991.06
6800	5150	386791.6	7079282	57626.32	57993.02
6800	5162.5	386791.9	7079295	57614.13	57980.13
6800	5175	386792.1	7079307	57616.24	57982.24
6800	5187.5	386792.4	7079319	57615.69	57981.69
6800	5200	386792.7	7079331	57614.43	57981.33
6800	5212.5	386793	7079343	57611.86	57979.76
6800	5225	386793.3	7079356	57606.74	57975.64
6800	5237.5	386793.6	7079368	57615.94	57984.64
6800	5250	386793.9	7079380	57615.81	57984.61
6800	5262.5	386794.2	7079392	57619.61	57988.61
6800	5275	386794.5	7079404	57614.59	57984.29
6800	5287.5	386794.8	7079417	57619.87	57990.07
6800	5300	386795.1	7079429	57618.72	57989.72
6800	5312.5	386795.4	7079441	57620.65	57991.35
6800	5325	386795.7	7079453	57616.84	57987.44
6800	5337.5	386796	7079465	57609.39	57979.59
6800	5350	386796.3	7079478	57613.05	57983.35
6800	5362.5	386796.6	7079490	57619.26	57988.56

**TYPHOON PROEPRTY
MAGNETIC SURVEY DATA**

Line	Station	X	Y	Raw_mag	Cor_mag
6800	5375	386796.9	7079502	57621.32	57990.32
6800	5387.5	386797.2	7079514	57620.49	57989.29
6800	5400	386797.5	7079527	57621.72	57990.32
6800	5412.5	386797.8	7079539	57616.12	57984.42
6800	5425	386798.1	7079551	57616.33	57984.53
6800	5437.5	386798.4	7079563	57616.59	57984.39
6800	5450	386798.7	7079575	57618.53	57986.83
6800	5462.5	386799	7079588	57614.35	57982.45
6800	5475	386799.3	7079600	57615.42	57985.42
6800	5487.5	386799.6	7079612	57618.91	57987.51
6800	5500	386799.9	7079624	57620.31	57989.11
6800	5512.5	386800.1	7079636	57622.09	57989.29
6800	5525	386800.4	7079649	57619.42	57986.22
6800	5537.5	386800.7	7079661	57620.5	57986.6
6800	5550	386801	7079673	57624.69	57989.59
6800	5562.5	386801.3	7079685	57624.65	57989.35
6800	5575	386801.6	7079697	57627.32	57991.32
6800	5587.5	386801.9	7079710	57629.15	57992.95
6800	5600	386802.2	7079722	57625.81	57990.11
6800	5612.5	386802.5	7079734	57623.99	57990.19
6800	5625	386802.8	7079746	57624.89	57989.89
6800	5637.5	386803.1	7079758	57631.05	57995.75
6800	5650	386803.4	7079771	57626.38	57989.88
6800	5662.5	386803.7	7079783	57628.05	57991.55
6800	5675	386804	7079795	57630.27	57992.07
6800	5687.5	386804.3	7079807	57636.55	57997.15
6800	5700	386804.6	7079819	57636	57995.8
6800	5712.5	386804.9	7079832	57637.14	57996.94
6800	5725	386805.2	7079844	57636.1	57994.6
6800	5737.5	386805.5	7079856	57635.61	57994.21
6800	5750	386805.8	7079868	57637.58	57995.08
6800	5762.5	386806.1	7079880	57641.73	57998.63
6800	5775	386806.4	7079893	57634.72	57991.92
6800	5787.5	386806.7	7079905	57638.47	57995.07
6800	5800	386807	7079917	57642.84	57999.24
6800	5812.5	386807.3	7079929	57642.8	57998.9
6800	5825	386807.6	7079941	57640.93	57998.03
6800	5837.5	386807.9	7079954	57647.79	58003.69
6800	5850	386808.1	7079966	57644.18	58000.38
6800	5862.5	386808.4	7079978	57645.96	58001.46
6800	5875	386808.7	7079990	57647.69	58002.99
6800	5887.5	386809	7080002	57646.29	58001.49
6800	5900	386809.3	7080015	57646.21	58001.21
6800	5912.5	386809.6	7080027	57638.66	57993.46
6800	5925	386809.9	7080039	57640.57	57995.47
6800	5937.5	386810.2	7080051	57647.36	58002.66
6800	5950	386810.5	7080063	57643.36	57998.16
6800	5962.5	386810.8	7080076	57645.68	58000.18
6800	5975	386811.1	7080088	57642.86	57998.06
6800	5987.5	386811.4	7080100	57640.88	57995.98
6800	6000	386811.7	7080112	57636.42	57991.32
6800	6012.5	386812	7080124	57644.41	57998.81
6800	6025	386812.3	7080137	57639.78	57994.18
6800	6037.5	386812.6	7080149	57643.64	57997.94
6800	6050	386812.9	7080161	57646.09	58000.79
6800	6062.5	386813.2	7080173	57650.63	58006.43
6800	6075	386813.5	7080186	57648.33	58004.53
6800	6087.5	386813.8	7080198	57644.08	58000.08
6800	6100	386814.1	7080210	57635.27	57991.97
6800	6112.5	386814.4	7080222	57651.83	58007.83
6800	6125	386814.7	7080234	57643.5	57999
6800	6137.5	386815	7080247	57646.98	58002.98
6800	6150	386815.3	7080259	57649.45	58005.05
6800	6162.5	386815.6	7080271	57650.37	58006.47
6800	6175	386815.9	7080283	57648.78	58005.48
6800	6187.5	386816.1	7080295	57647.97	58004.97
6800	6200	386816.4	7080308	57644.18	58000.98
6800	6212.5	386816.7	7080320	57651.47	58008.57

**TYPHOON PROEPRTY
MAGNETIC SURVEY DATA**

Line	Station	X	Y	Raw_mag	Cor_mag
6800	6225	386817	7080332	57644.92	58002.22
6800	6237.5	386817.3	7080344	57646.26	58002.96
6800	6250	386817.6	7080356	57644.6	58000.7
6800	6262.5	386817.9	7080369	57643.31	57999.41
6800	6275	386818.2	7080381	57647.19	58003.89
6800	6287.5	386818.5	7080393	57640.74	57998.34
6800	6300	386818.8	7080405	57643.35	58000.55
6800	6312.5	386819.1	7080417	57633.98	57992.88
6800	6325	386819.4	7080430	57636.17	57996.37
6800	6337.5	386819.7	7080442	57641.17	58001.67
6800	6350	386820	7080454	57621.04	57982.04
7000	4550	387020	7078724	57606.38	57986.88
7000	4562.5	387019.8	7078737	57603.21	57983.11
7000	4575	387019.6	7078749	57606.14	57986.14
7000	4587.5	387019.3	7078762	57607.54	57987.54
7000	4600	387019.1	7078774	57613.48	57995.48
7000	4612.5	387018.9	7078787	57617.19	57997.39
7000	4625	387018.7	7078799	57611.61	57992.31
7000	4637.5	387018.4	7078812	57604.7	57985.2
7000	4650	387018.2	7078824	57608.2	57989
7000	4662.5	387018	7078837	57605.85	57986.75
7000	4675	387017.8	7078849	57603.7	57985.1
7000	4687.5	387017.6	7078862	57600.57	57982.87
7000	4700	387017.3	7078874	57610.57	57993.07
7000	4712.5	387017.1	7078887	57610.13	57992.33
7000	4725	387016.9	7078899	57604.34	57986.84
7000	4737.5	387016.7	7078912	57606.43	57989.23
7000	4750	387016.4	7078924	57601.48	57983.68
7000	4762.5	387016.2	7078937	57595.69	57977.59
7000	4775	387016	7078949	57598.01	57979.61
7000	4787.5	387015.8	7078962	57598.99	57981.19
7000	4800	387015.6	7078974	57602.38	57984.28
7000	4812.5	387015.3	7078987	57598.05	57979.85
7000	4825	387015.1	7078999	57595.33	57978.13
7000	4837.5	387014.9	7079012	57611.06	57992.76
7000	4850	387014.7	7079024	57600.73	57981.93
7000	4862.5	387014.4	7079037	57597.97	57978.87
7000	4875	387014.2	7079049	57591.77	57973.77
7000	4887.5	387014	7079062	57597.4	57979.4
7000	4900	387013.8	7079074	57604.64	57986.64
7000	4912.5	387013.6	7079087	57597.76	57979.06
7000	4925	387013.3	7079099	57595.46	57976.16
7000	4937.5	387013.1	7079112	57596.39	57978.19
7000	4950	387012.9	7079124	57590.89	57972.19
7000	4962.5	387012.7	7079137	57600.3	57982.4
7000	4975	387012.4	7079149	57592.53	57974.43
7000	4987.5	387012.2	7079162	57592.35	57975.85
7000	5000	387012	7079174	57593.72	57983.82
7000	5012.5	387012	7079186	57586.53	57977.33
7000	5025	387012.1	7079198	57589.46	57980.16
7000	5037.5	387012.1	7079210	57591.1	57978.71
7000	5050	387012.1	7079222	57593.1	57977.9
7000	5062.5	387012.2	7079234	57591.57	57975.37
7000	5075	387012.2	7079246	576.29	57986.59
7000	5087.5	387012.3	7079258	57597.11	57984.21
7000	5100	387012.3	7079271	5767.68	57994.28
7000	5112.5	387012.3	7079283	5768.43	57995.33
7000	5125	387012.4	7079295	57618.22	58006.52
7000	5137.5	387012.4	7079307	57618.99	58007.29
7000	5150	387012.4	7079319	57615.94	58004.94
7000	5162.5	387012.5	7079331	5766.44	57995.34
7000	5175	387012.5	7079343	5769.21	57998.61
7000	5187.5	387012.6	7079355	5767.32	57997.32
7000	5200	387012.6	7079367	5763.36	57993.36
7000	5212.5	387012.6	7079379	5763.22	57990.42
7000	5225	387012.7	7079391	5764.1	57990.4
7000	5237.5	387012.7	7079403	576.77	57987.47
7000	5250	387012.7	7079415	5761.36	57988.86

**TYPHOON PROEPRTY
MAGNETIC SURVEY DATA**

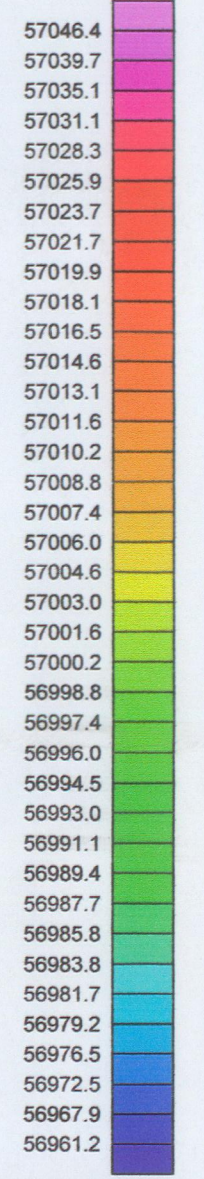
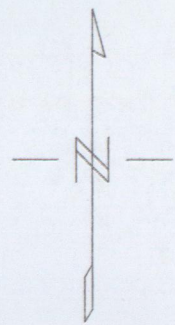
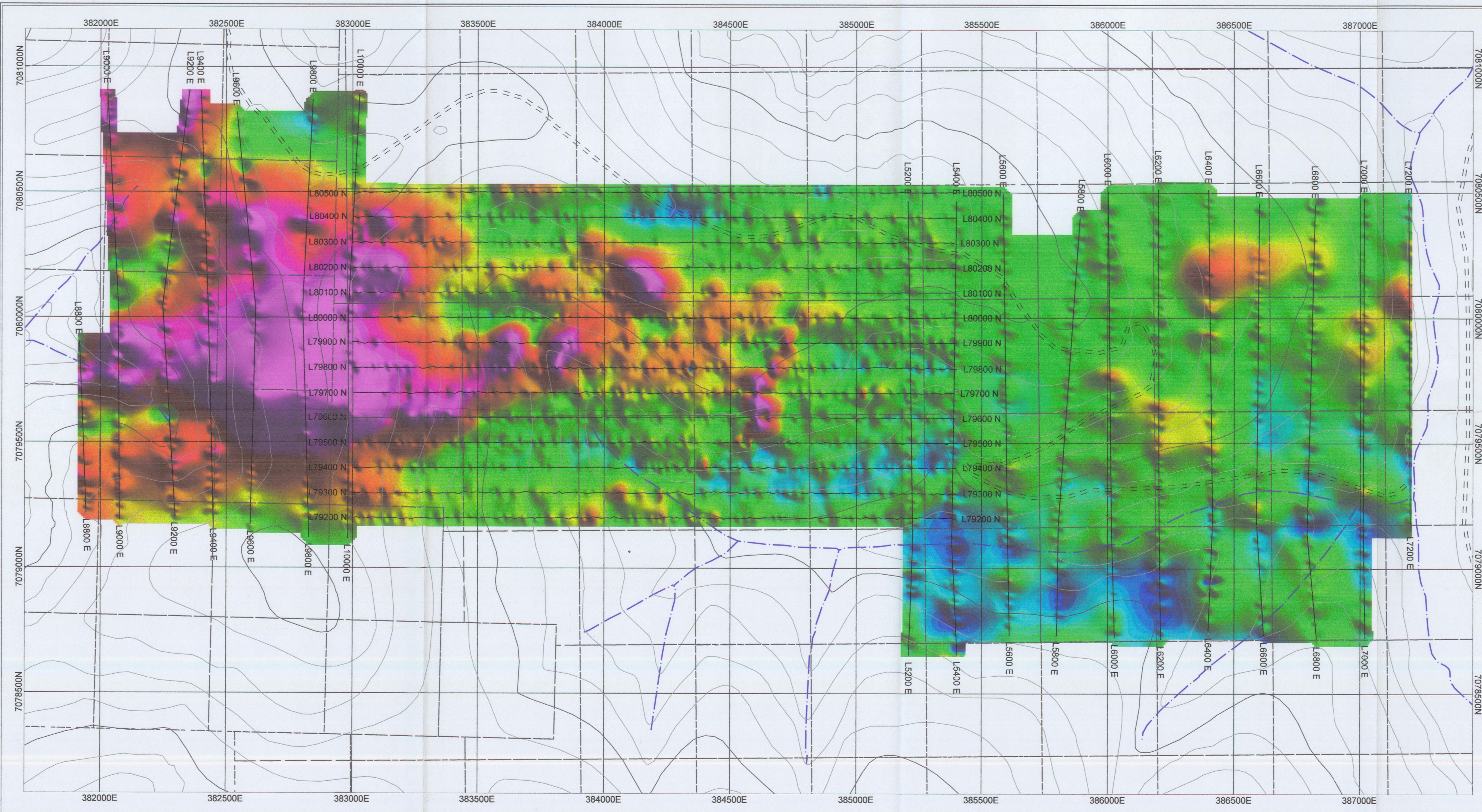
Line	Station	X	Y	Raw_mag	Cor_mag
7000	5262.5	387012.8	7079427	57599.59	57987.69
7000	5275	387012.8	7079439	576.23	57988.73
7000	5287.5	387012.9	7079451	57597.83	57986.53
7000	5300	387012.9	7079464	57594.89	57983.49
7000	5312.5	387012.9	7079476	57589.6	57978.1
7000	5325	387013	7079488	57597.59	57985.59
7000	5337.5	387013	7079500	57599.27	57986.37
7000	5350	387013	7079512	576.9	57988
7000	5362.5	387013.1	7079524	576.59	57987.89
7000	5375	387013.1	7079536	576.26	57988.06
7000	5387.5	387013.1	7079548	57591.4	57979.64
7000	5400	387013.2	7079560	57597.34	57986.64
7000	5412.5	387013.2	7079572	57599.27	57989.67
7000	5425	387013.3	7079584	57596.9	57988.9
7000	5437.5	387013.3	7079596	57597.29	57990.79
7000	5450	387013.3	7079608	57595.87	57989.47
7000	5462.5	387013.4	7079620	57586.79	57980.49
7000	5475	387013.4	7079632	57596.81	57990.21
7000	5487.5	387013.4	7079645	57596.51	57988.71
7000	5500	387013.5	7079657	57599.83	57991.83
7000	5512.5	387013.5	7079669	57597.96	57989.26
7000	5525	387013.6	7079681	57614.35	58005.25
7000	5537.5	387013.6	7079693	57612.17	58003.37
7000	5550	387013.6	7079705	57611.38	58002.26
7000	5562.5	387013.7	7079717	57611.4	58002.5
7000	5575	387013.7	7079729	57614.9	58005.49
7000	5587.5	387013.7	7079741	57613.99	58005.19
7000	5600	387013.8	7079753	57612.28	58004.08
7000	5612.5	387013.8	7079765	5761.25	58002.35
7000	5625	387013.9	7079777	5769.54	58001.94
7000	5637.5	387013.9	7079789	57612.75	58004.95
7000	5650	387013.9	7079801	57611.9	58003.39
7000	5662.5	387014	7079813	57613.14	58006.14
7000	5675	387014	7079825	57614.79	58007.39
7000	5687.5	387014	7079838	57617.15	58009.65
7000	5700	387014.1	7079850	57615.87	58008.27
7000	5712.5	387014.1	7079862	57613.46	58005.86
7000	5725	387014.1	7079874	57613.22	58005.32
7000	5737.5	387014.2	7079886	57617.3	58009
7000	5750	387014.2	7079898	57617.18	58009.38
7000	5762.5	387014.3	7079910	5765.43	57997.63
7000	5775	387014.3	7079922	57611.92	58004.82
7000	5787.5	387014.3	7079934	5765.23	57998.93
7000	5800	387014.4	7079946	57616.41	58010.71
7000	5812.5	387014.4	7079958	5761.95	58005.45
7000	5825	387014.4	7079970	57611.71	58006.51
7000	5837.5	387014.5	7079982	57611.51	58006.71
7000	5850	387014.5	7079994	57617.33	58012.83
7000	5862.5	387014.6	7080006	5764.18	58000.18
7000	5875	387014.6	7080019	57612.12	58008.42
7000	5887.5	387014.6	7080031	5768.78	58005.58
7000	5900	387014.7	7080043	5764.23	58001.33
7000	5912.5	387014.7	7080055	576.69	57997.59
7000	5925	387014.7	7080067	5763.99	58001.09
7000	5937.5	387014.8	7080079	5761.24	57998.24
7000	5950	387014.8	7080091	5763.21	58000.01
7000	5962.5	387014.9	7080103	57598.17	57995.57
7000	5975	387014.9	7080115	576.15	57997.35
7000	5987.5	387014.9	7080127	57595.87	57992.97
7000	6000	387015	7080139	57595.3	57991.63
7000	6012.5	387015	7080151	57597.34	57993.84
7000	6025	387015	7080163	57599.18	57995.48
7000	6037.5	387015.1	7080175	576.7	57996.6
7000	6050	387015.1	7080187	5761.29	57996.99
7000	6062.5	387015.1	7080200	57599.65	57995.15
7000	6075	387015.2	7080212	5762.62	57997.62
7000	6087.5	387015.2	7080224	57596.12	57991.02
7000	6100	387015.3	7080236	5763.36	57997.86

**TYPHOON PROEPRTY
MAGNETIC SURVEY DATA**

Line	Station	X	Y	Raw_mag	Cor_mag
7000	6112.5	387015.3	7080248	57596.35	57990.05
7000	6125	387015.3	7080260	5761.62	57994.92
7000	6137.5	387015.4	7080272	57596.99	57990.19
7000	6150	387015.4	7080284	57597.49	57990.59
7000	6162.5	387015.4	7080296	57596.65	57989.85
7000	6175	387015.5	7080308	57597.28	57990.48
7000	6187.5	387015.5	7080320	57594.26	57987.56
7000	6200	387015.6	7080332	57597.92	57991.22
7000	6212.5	387015.6	7080344	57597.96	57991.76
7000	6225	387015.6	7080356	57596.73	57990.33
7000	6237.5	387015.7	7080368	57594.32	57988.22
7000	6250	387015.7	7080380	57597.24	57990.54
7000	6262.5	387015.7	7080393	5761.5	57994.9
7000	6275	387015.8	7080405	57594.3	57987.7
7000	6287.5	387015.8	7080417	57599.19	57992.69
7000	6300	387015.9	7080429	57598.47	57992.57
7000	6312.5	387015.9	7080441	57599.53	57993.73
7000	6325	387015.9	7080453	57596.6	57989.96
7000	6337.5	387016	7080465	57596.12	57989.92
7000	6350	387016	7080477	57599.28	57993.18
7200	5000	387201	7079157	57591.72	57988.72
7200	5012.5	387200.9	7079169	57594.87	57991.67
7200	5025	387200.9	7079181	57595.97	57992.17
7200	5037.5	387200.8	7079194	5761.56	57997.46
7200	5050	387200.8	7079206	57596.38	57992.28
7200	5062.5	387200.7	7079218	57587.45	57983.05
7200	5075	387200.7	7079230	5759.46	57985.46
7200	5087.5	387200.6	7079242	57593.72	57988.32
7200	5100	387200.6	7079254	57592.62	57987.22
7200	5112.5	387200.5	7079267	57596.37	57990.07
7200	5125	387200.4	7079279	57589.44	57983.34
7200	5137.5	387200.4	7079291	57592.84	57986.84
7200	5150	387200.3	7079303	57591.99	57984.89
7200	5162.5	387200.3	7079315	5759.85	57984.45
7200	5175	387200.2	7079328	57592.97	57985.27
7200	5187.5	387200.2	7079340	57582.57	57974.77
7200	5200	387200.1	7079352	57586.81	57978.71
7200	5212.5	387200.1	7079364	57591.94	57983.24
7200	5225	387200	7079376	57592.43	57982.83
7200	5237.5	387199.9	7079389	57591.74	57982.34
7200	5250	387199.9	7079401	5759.81	57981.91
7200	5262.5	387199.8	7079413	57579.12	57970.52
7200	5275	387199.8	7079425	5759.23	57981.73
7200	5287.5	387199.7	7079437	57588.28	57979.68
7200	5300	387199.7	7079449	57585.14	57976.44
7200	5312.5	387199.6	7079462	57595.32	57986.72
7200	5325	387199.6	7079474	57597.7	57988.17
7200	5337.5	387199.5	7079486	5765.8	57995.98
7200	5350	387199.4	7079498	57597.99	57988.79
7200	5362.5	387199.4	7079510	576.8	57992.2
7200	5375	387199.3	7079523	5765.18	57997.38
7200	5387.5	387199.3	7079535	57599.93	57993.13
7200	5400	387199.2	7079547	5766.84	57999.54
7200	5412.5	387199.2	7079559	57612.74	58005.44
7200	5425	387199.1	7079571	57613.68	58005.78
7200	5437.5	387199.1	7079583	5766.7	57998.37
7200	5450	387199	7079596	5767.57	57999.37
7200	5462.5	387198.9	7079608	57598.87	57991.17
7200	5475	387198.9	7079620	57597.99	57990.89
7200	5487.5	387198.8	7079632	57592.92	57985.12
7200	5500	387198.8	7079644	5762.3	57994.63
7200	5512.5	387198.7	7079657	5761.97	57994.67
7200	5525	387198.7	7079669	5762.67	57994.87
7200	5537.5	387198.6	7079681	57598.21	57990.81
7200	5550	387198.6	7079693	57593.72	57986.22
7200	5562.5	387198.5	7079705	57599.49	57992.39
7200	5575	387198.4	7079718	5762.44	57995.94
7200	5587.5	387198.4	7079730	576.51	57994.11

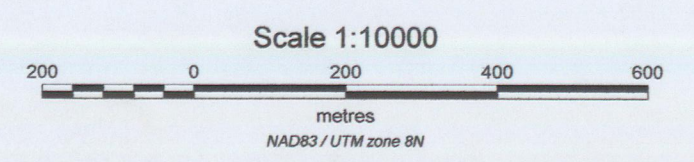
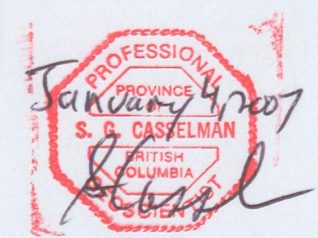
**TYPHOON PROEPRTY
MAGNETIC SURVEY DATA**

Line	Station	X	Y	Raw_mag	Cor_mag
7200	5600	387198.3	7079742	5764.5	57997.65
7200	5612.5	387198.3	7079754	57597.53	57991.33
7200	5625	387198.2	7079766	5763.88	57998.68
7200	5637.5	387198.2	7079778	5763.6	57997.6
7200	5650	387198.1	7079791	5764.87	57999.47
7200	5662.5	387198.1	7079803	5766.59	58000.69
7200	5675	387198	7079815	5769.24	58003.74
7200	5687.5	387197.9	7079827	57592.78	57987.28
7200	5700	387197.9	7079839	5761.28	58005.08
7200	5712.5	387197.8	7079852	5768.32	58002.52
7200	5725	387197.8	7079864	57611.12	58005.52
7200	5737.5	387197.7	7079876	576.97	57995.77
7200	5750	387197.7	7079888	5767.85	58002.55
7200	5762.5	387197.6	7079900	57595.33	57989.93
7200	5775	387197.6	7079912	5768.84	58003.04
7200	5787.5	387197.5	7079925	576.14	57994.64
7200	5800	387197.4	7079937	5767.29	58001.79
7200	5812.5	387197.4	7079949	5769.78	58004.88
7200	5825	387197.3	7079961	57611.58	58005.98
7200	5837.5	387197.3	7079973	57612.86	58007.56
7200	5850	387197.2	7079986	57612.66	58006.66
7200	5862.5	387197.2	7079998	5764.91	57999.01
7200	5875	387197.1	7080010	57622.37	58015.67
7200	5887.5	387197.1	7080022	57618.29	58012.09
7200	5900	387197	7080034	57633.15	58026.45
7200	5912.5	387196.9	7080047	57632.71	58026.61
7200	5925	387196.9	7080059	57631.54	58025.14
7200	5937.5	387196.8	7080071	57633.31	58026.71
7200	5950	387196.8	7080083	57629.19	58022.29
7200	5962.5	387196.7	7080095	57621.36	58019.16
7200	5975	387196.7	7080107	57627.69	58021.79
7200	5987.5	387196.6	7080120	57613.51	58007.31
7200	6000	387196.6	7080132	5761.78	58004.48
7200	6012.5	387196.5	7080144	57615.46	58008.66
7200	6025	387196.4	7080156	5761.84	58003.84
7200	6037.5	387196.4	7080168	57614.6	58006.86
7200	6050	387196.3	7080181	5768.6	57998.76
7200	6062.5	387196.3	7080193	5768.17	58000.87
7200	6075	387196.2	7080205	5765.73	57998.33
7200	6087.5	387196.2	7080217	5765.3	57997.93
7200	6100	387196.1	7080229	5765.31	57998.21
7200	6112.5	387196.1	7080241	5769.42	58001.72
7200	6125	387196	7080254	57612.49	58005.19
7200	6137.5	387195.9	7080266	5761.61	58003.41
7200	6150	387195.9	7080278	5761.73	58003.33
7200	6162.5	387195.8	7080290	57613.56	58006.86
7200	6175	387195.8	7080302	57614.96	58007.86
7200	6187.5	387195.7	7080315	5766.32	57999.12
7200	6200	387195.7	7080327	5766.87	57999.07
7200	6212.5	387195.6	7080339	57599.12	57990.92
7200	6225	387195.6	7080351	5764.26	57995.76
7200	6237.5	387195.5	7080363	576.73	57992.53
7200	6250	387195.4	7080376	576.61	57991.01
7200	6262.5	387195.4	7080388	57592.98	57983.28
7200	6275	387195.3	7080400	57595.53	57986.53
7200	6287.5	387195.3	7080412	57598.52	57990.42
7200	6300	387195.2	7080424	57591.62	57983.72
7200	6312.5	387195.2	7080436	57591.84	57983.54
7200	6325	387195.1	7080449	57599.19	57990.49
7200	6337.5	387195.1	7080461	57597.55	57988.25
7200	6350	387195	7080473	57592.86	57983.96

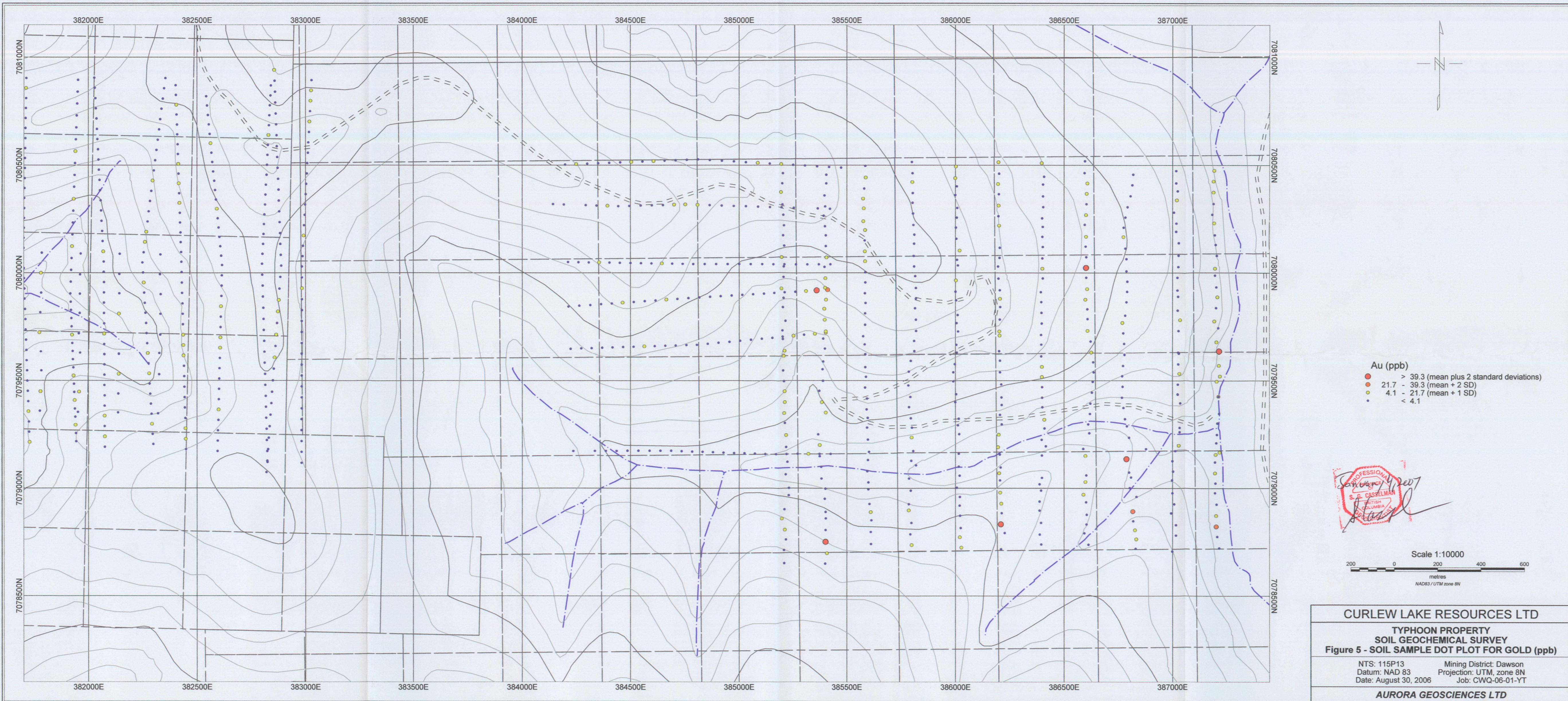


Magnetics (nT)

shading inclination = 45 degrees
shading declination = 45 degrees



CURLEW LAKE RESOURCES LTD
TYPHOON PROPERTY
TOTAL MAGNETIC FIELD SURVEY
Figure 4 - SHADED RELIEF TOTAL MAGNETIC FIELD MAP
 NTS: 115P13 Mining District: Dawson
 Datum: NAD 83 Projection: UTM, zone 8N
 Date: January 1, 2007 Job: CWQ-06-01-YT
AURORA GEOSCIENCES LTD



PROFESSIONAL
S. A. CASSELMAN
GEOLOGIST
COLUMBIA

CURLEW LAKE RESOURCES LTD
TYPHOON PROPERTY
SOIL GEOCHEMICAL SURVEY
Figure 5 - SOIL SAMPLE DOT PLOT FOR GOLD (ppb)
 NTS: 115P13 Mining District: Dawson
 Datum: NAD 83 Projection: UTM, zone 8N
 Date: August 30, 2006 Job: CWQ-06-01-YT
AURORA GEOSCIENCES LTD