

RECONNAISSANCE MAPPING  
GENERAL PROSPECTING AND LIMITED SOIL SAMPLING  
AND MINOR TRENCHING

ON THE  
SANDFIPER CLAIMS 1 and 2  
YB21672-YB21673

WHITEHORSE MINING DIVISION

N.T.S. \_ 105D/2

Centered on 134°35' Longitude, 60°3' Latitude

Owned by:

J.BARRY O'NEILL  
P.O. Box 4441,  
Whitehorse, Yukon  
Y1A 3T5

093 849

Work Crew

J. Barry O'NEILL & JOHN O'NEILL

Field work carried out July 18TH & 19TH  
& August 14TH  
1997



This report has been examined by  
the Geological Evaluation Unit  
under Section 53 (4) Yukon Quartz  
Mining Act and is allowed as  
representation work in the amount  
of \$ 1000.00.

*for M. S. L.*

Regional Manager, Exploration and  
Geological Services for Commissioner,  
of Yukon Territory.

REPORT OF  
PROSPECTING, SAMPLING,  
TRENCHING  
ON THE  
SANDPIPER CLAIMS

INTRODUCTION

The Sandpiper claims were staked in the mid-1980's to cover a projected low-grade gold discovery made by the writer on the adjoining Raindrop claims to the southwest, which coincidentally also covered the Venus Mine tailings pond. Subsequently, the Raindrop claims and contained 'tailings pond' were sold to Robt. Hilker, P. Eng., from Calgary, Alta., who in turn following negotiations, transferred same to the Carcross First Nations band who at the time of this writing, are endeavouring to contain the arsenic therein and the resultant poisonous mix from flowing into Windy Arm, two hundred feet ( + - ) distant.

LOCATION AND ACCESS

The Sandpiper claims are located on the west side of Windy Arm distant about 400 metres north-easterly from the foundations of the former Venus Mines, Ltd., mill, and approximately eleven miles south of the town of Carcross and fronting on the high-way connecting Carcross and Skagway, Alaska, U.S.A.

Access is by foot, and although Sandpiper No. 1, YB21672 parallels the Carcross - Skagway road the intervening ditch negates vehicle access, - whereas Sandpiper No. 2, YB21673, is accessible by foot and or boat from Windy Arm.

PHYSIOGRAPHY

The Sandpiper claims 1 and 2 are for the most part well forested with a mix of spruce, poplar and willows and the terrain is flat to gently rolling and the highest elevation would not exceed 100' above the waters of Windy Arm.

## GENERAL GEOLOGY

Where exposed on low rock faces on the Sandpiper No. 2 claim adjacent and paralleling that body of arsenic laced water ( Windy Arm ), rock types appear to be volcanic in origin, but highly metamorphosed and in rare occasions finely laced with fractional widths of quartz and/or calcite veining. Samples of this material when assayed for gold and silver returned Au values in the 0.003 O.P.T. range ( +- ) and minimal values in silver. ( Bondar-Clegg late 1980's ). Frost-heaved and highly fractured exposures of rock out-crops occur randomly in the less heavily wooded areas, but in general in these locales of frost-heaved rocks there is little or no over-burden or the rock types are thinly blanketed with moss, precluding the gathering of enough over-burden samples to indeed be representative of an area slated for a geo-chem program.

Only nine soil samples were collected due to the nature of terrain, gathered where possible along the base-line, and at random intervals east and west of the base-line where physically possible. Every sample location was clearly marked with flagging and numbered with marker pen in order of sample sequence. Only two samples were deemed worthy of testing for gold and contained minerals, and the resultant assays from Northern Analytical Services, Ltd., laboratory, are herein enclosed.

Axes and machetes were the line cutting tools, picks and shovels the means of the limited and laborious ( lack of top soil ) trenching and random test pit, as out-lined on the enclosed plan of workings. Prospecting and close examination of rock samples by magnifying glass revealed little or no mineralization other than occasional dispersions of pyrite, and marcasite.

## CONCLUSIONS

The Sandpiper claims 1 & 2 were located to cover the possible and projected extension of a gold discovery in quartz veins on the Raindrop No 2 claim adjoining to the south west, YB06941. To date no mineralization of consequence has been noted on the Sandpiper claims; however, in the proximity of the northern boundaries of Sandpiper 1 & 2 and easterly from the common location line, numerous small quartz boulders were noted.

The source of the quartz float was not discovered, possibly because the land surface lent itself to fairly massive trees and root-entangled thick moss. As in the assessment work of 1995, two quartz samples were assayed for gold and silver, the results of which are included with this report.

STATEMENT OF COSTS

A. WAGES

John O'Neill	3 days @ \$250.00	\$750.00
J.B. O'Neill	3 days @ \$300.00	\$900.00

B. RESTAURANT & GROCERIES

3 days @ + = \$60.00 per day	\$180.00
------------------------------	----------

C. TRANSPORTATION

Fuel	\$ 97.30
------	----------

D. SAMPLE ANALYSIS

Chemex Labs Ltd	\$ 55.50
-----------------	----------

TOTAL

\$1,927.30



# Chemex Labs Ltd.

Analytical Chemists \* Geochemists \* Registered Assayers

212 BROOKSBANK AVE., NORTH VANCOUVER,  
BRITISH COLUMBIA, CANADA V7J-2C1

PHONE (604) 984-0221

To: O'NEILL, J. B.

\*\*

P.O. BOX 4441  
WHITEHORSE, YT  
Y1A 3T5

**\* INVOICE NUMBER 18917682 \***

## BILLING INFORMATION

Date :  
Project :  
P.O. # : NONE  
Account : FSO

Comments:

Billing : For analysis performed on  
Certificate A8917682

Terms : Net payment in 30 Days  
1.5% per month (18% per annum)  
charged on overdue accounts.

Please remit payments to:

CHEMEX LABS LTD.  
212 Brooksbank Ave.,  
North Vancouver, B.C.  
Canada V7J-2C1

CHEMEX CODE	ANALYSIS DESCRIPTION	SAMPLES ANALYZED	UNIT PRICE	AMOUNT
100 - G11 -	Au ppb FA+AA TR-11 AU RELATED	2	24.00	48.00
Sample preparation and other charges :				
205 -	Rock Geochem - RING	2	3.75	7.50
			Total Cost \$	55.50
			TOTAL PAYABLE \$	55.50



# Chemex Labs Ltd.

Analytical Chemists • Geochemists • Registered Assayers

212 BROOKSBANK AVE., NORTH VANCOUVER,  
BRITISH COLUMBIA, CANADA V7J-2C1

PHONE (604) 984-0221

To: O'NEILL, J. B.

P.O. BOX 4441  
WHITEHORSE, YT  
Y1A 3T5

Project:

Comments:

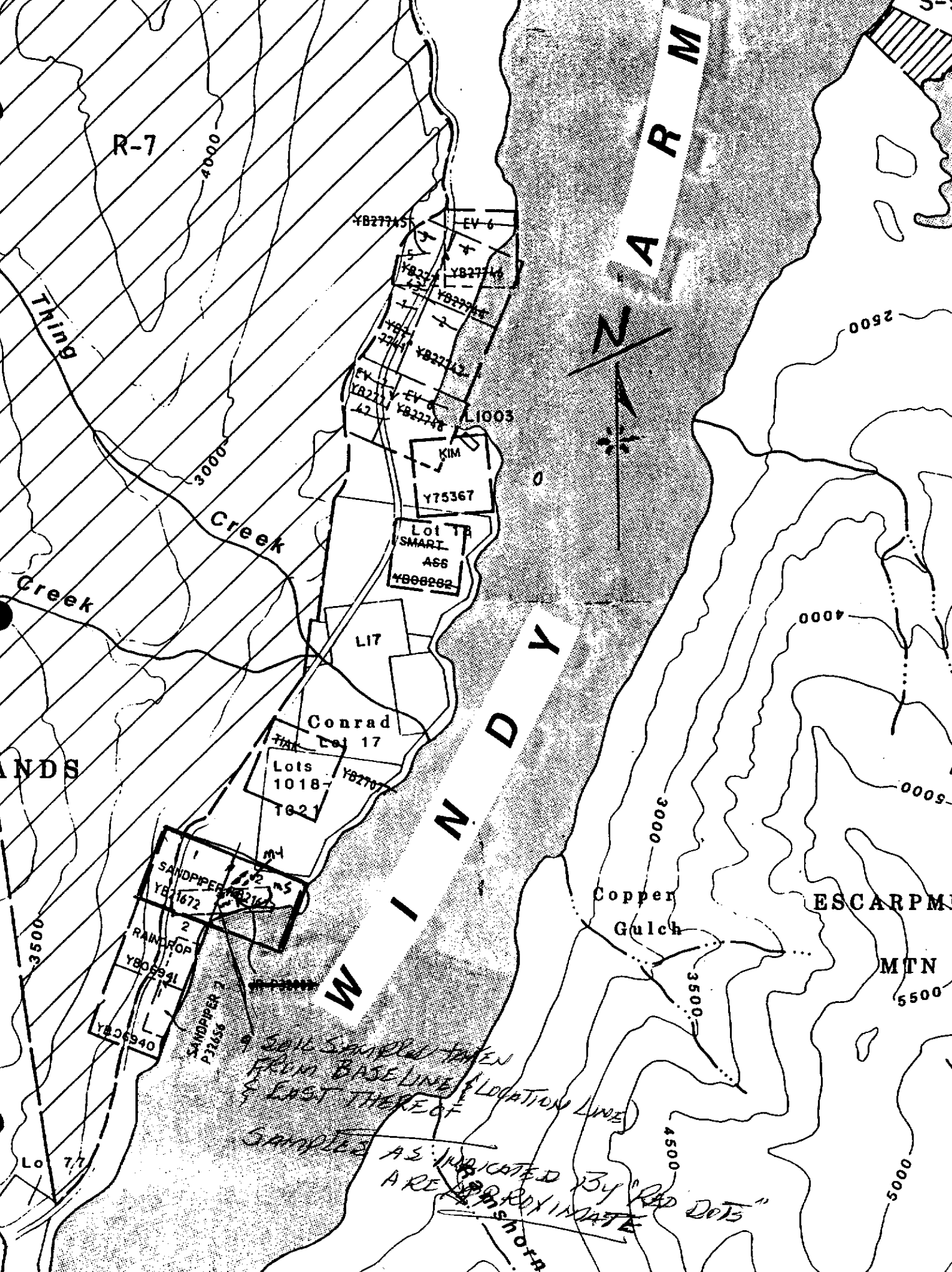
\*\*Page No. :  
Tot. Pages :  
Date :  
Invoice # : I-891...  
P.O. # : NONE

## CERTIFICATE OF ANALYSIS A8917682

SAMPLE DESCRIPTION	PREP CODE	Au ppb FA+AA	Cu ppm	Mo ppm	Pb ppm	Zn ppm	Ag ppm Aqua R	Cd ppm	As ppm	Se ppm	Hg ppb	Sb ppm	Bi ppm
M-4	205	< 5	5	< 1	20	112	< 0.2	< 0.1	6	< 0.2	50	1.0	0.1
M-5	205	< 5	3	< 1	33	68	< 0.2	< 0.1	50	< 0.2	90	0.2	1.6

CERTIFICATION :

*Hart Bickler*



R-7

4000

Thing  
Creek

3000

Creek

Creek

YB277451

EV 6

YB27746

YB27746

YB27746

YB27746

YB27746

YB27746

YB27746

YB27746

YB27746

YB27746

YB27746

YB27746

YB27746

YB27746

YB27746

YB27746

YB27746

YB27746

YB27746

YB27746

YB27746

YB27746

YB27746

YB27746

YB27746

YB27746

YB27746

YB27746

YB27746

YB27746

YB27746

YB27746

YB27746

YB27746

YB27746

YB27746

YB27746

YB27746

YB27746

YB27746

L1003

KIM

Y75367

Lot 7B

SMART

AS6

YB08282

L17

Conrad

Lot 17

Lots

1018

YB27746

YB27746

YB27746

YB27746

YB27746

YB27746

YB27746

YB27746

YB27746

YB27746

YB27746

YB27746

YB27746

YB27746

YB27746

YB27746

YB27746

YB27746

SANDPIPER

YB1672

YB1672

YB1672

YB1672

YB1672

YB1672

YB1672

YB1672

YB1672

YB1672

YB1672

YB1672

YB1672

YB1672

YB1672

RAINBOW

YB08941

YB08941

YB08941

YB08941

YB08941

YB08941

YB08941

YB08941

YB08941

YB08941

YB08941

YB08941

YB08941

SANDPIPER

P22658

P22658

P22658

P22658

P22658

P22658

P22658

P22658

P22658

P22658

P22658

SOIL SAMPLES TAKEN  
FROM BASELINE & LOCATION LINE  
& EAST THEREOF

SAMPLES AS INDICATED BY "RED DOTS"  
ARE APPROXIMATE

N A R M

W I L M E T T E

Copper  
Gulch

ESCARPM

MTN

5500

3000

3500

4500

5000

2500

4000

0000

Lo 77