

093794

Geological Assessment Report

For The

Chzerpnough Mineral Property
[Char 1-30 and Fire 1-12 Claims]
NTS 105-F-9

For

Eagle Plains Resources [EPL:ASE]

And

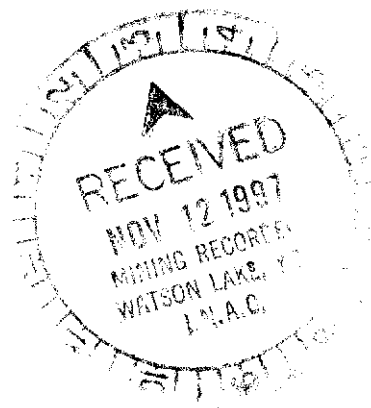
Miner River Resources [MRG:ASE]
Joint-Venture

By

Bernie Kreft
October 16, 1997

TABLE OF CONTENTS

Summary And Conclusions1
Introduction1
Geology1
Mineralization2
Reccomendations3
Prospectors Certificate3
Rock Sample Descriptions4
Expense Summary5
Property Location Map6
Geology And Sample Location Map7
Geochemical Results8



This report has been examined by
the Geological Evaluation Unit
under Section 53 (4) Yukon Quartz
Mining Act and is allowed as
representation work in the amount
of \$ 3500.00.

M. Rubin
for Regional Manager, Exploration and
Geological Services for Commissioner
of Yukon Territory.

SUMMARY AND CONCLUSIONS

Exploration work completed on the Fire # 1 and Char # 12 quartz claims consisted of hand trenching, geological mapping and rock sampling. The purpose of the work was to locate and assess a barite float train which was reported to occur on the claims.

Work was successful in locating the barite float train. It consists of numerous angular boulders [to 0.3m in diameter] of bedded sucrosic barite occurring over a 20 by 80 metre area in a gully. Samples of barite mineralized with bands of disseminated pyrite and galena returned up to 56.1 g/mT Ag, 5760 ppm Pb and 812 ppm Zn. As well, a new showing consisting of flow banded rhyolite with up to 15% pyrite occurring as wisps, bands and blebs oriented parallel to bedding, was located. This material returned up to 2280 ppm Pb and 1709 ppm Zn.

Work to date has encountered several mineralized showings of a type which commonly occur proximal to VMS occurrences within the same geological terrane. More work is warranted, and necessary to fully evaluate the claims.

INTRODUCTION

The Fire 1-12 and Char 1-30 claims occur at the headwaters of Cloutier Creek, in the south-central Yukon Territory, 40km south of Ross River. Elevations on the property range between 1500 and 2200 metres, with topography ranging from moderate to very steep. The exploration season normally lasts from mid-June to mid-September.

Access is currently by helicopter only. The Groundhog Creek road and Ketzka River mine road both pass within 22km of the property. A cat trail continuing from the head of the Groundhog Creek road passes within 6km of the west edge of the property.

The claims were staked to cover a Pb-Zn soil geochemical anomaly, a geophysical [mag and E.M.] target and associated mineralized showings located by Cyprus-Anvil Mining during 1977 fieldwork.

GEOLOGY

The claims lie at the northern end of the Omineca Crystalline Belt. Stratigraphy underlying the claims consists of sedimentary rocks, notably quartzite, shale and limestone interbedded with felsic volcanic flows, ash to lapilli tuffs, agglomerate, and flow breccia. The entire succession is considered Devonian to Mississippian in age. This package hosts several VMS deposits, including: the MM [20km to the S.W.] and the Wolf [55km to the S.E.].

Faults either trend N.W., or N.E., with several of the N.E. trending ones exhibiting local areas of silicification and pyritization. Alteration consisting of chlorite, fluorite and quartz-sericite is locally intense within the volcanic rocks. The felsic volcanics contain abundant disseminated pyrite [locally up to 15%] and are extensively gossaned.

MINERALIZATION

Mineralization encountered on the property is of two types: [1] sucrosic sedimentary barite with bands of disseminated pyrite and galena [2] flow banded rhyolite with up to 15% syngenetic pyrite.

Barite has only been located as float. Pieces are up to 0.3m in diameter, with their shape and mode of occurrence suggesting two small pods or lenses immediately beneath the float train. Geochem analysis returned highly anomalous silver and lead along with weakly anomalous zinc.

Barite Geochemistry

	Au [ppb]	Ag [ppm]	Cu [ppm]	Pb [ppm]	Zn [ppm]	Cd [ppm]
TTF97R01	8	4.5	9	3110	812	3.0
TTF97R03	<5	5.6	3	283	311	2.4
FBK-1	6	56.1	9	5760	185	1.2
FBK-2	6	27.3	4	3280	83	1.1

Mineralized flow banded rhyolite occurs as sub-outcrop spread over a 4m by 8m area. The limits of the occurrence are defined by talus cover. Mineralized pieces attain a maximum thickness of 0.4m, and are not overly abundant. Compared to barite, the flows contain higher values in zinc, copper and cadmium; and lower silver and lead. Although samples contain highly anomalous lead and zinc values, no base metal sulphides could be positively identified in hand specimen, and it is therefore likely that the lead and zinc occur as extremely fine grained disseminations interspersed with pyrite.

Rhyolite Flow Geochemistry

	Au [ppb]	Ag [ppm]	Cu [ppm]	Pb [ppm]	Zn [ppm]	Cd [ppm]
TTF97R06	22	2.7	43	2280	1699	40.7
TTF97R07	20	2.2	59	1960	1709	26.2
FBK-3	<5	3.0	58	1440	1313	11.8

RECCOMENDATIONS

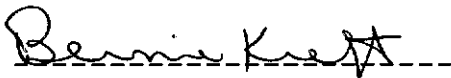
Further work is recommended on the claim group. This work should consist of trenching, to expose fresh bedrock in the vicinity of the two showings and geophysical surveys to test for massive sulphides potentially associated with the showings.

CERTIFICATION

I, Bernie Kreft, of 1409 Fir Street, Whitehorse, Yukon Territory, was present and witnessed the exploration work described herein. I have twelve years experience prospecting in the Yukon.

This report is based on fieldwork conducted or witnessed by myself.

Respectfully submitted,

A handwritten signature in cursive script that reads "Bernie Kreft". The signature is written over a horizontal dashed line.

Bernie Kreft

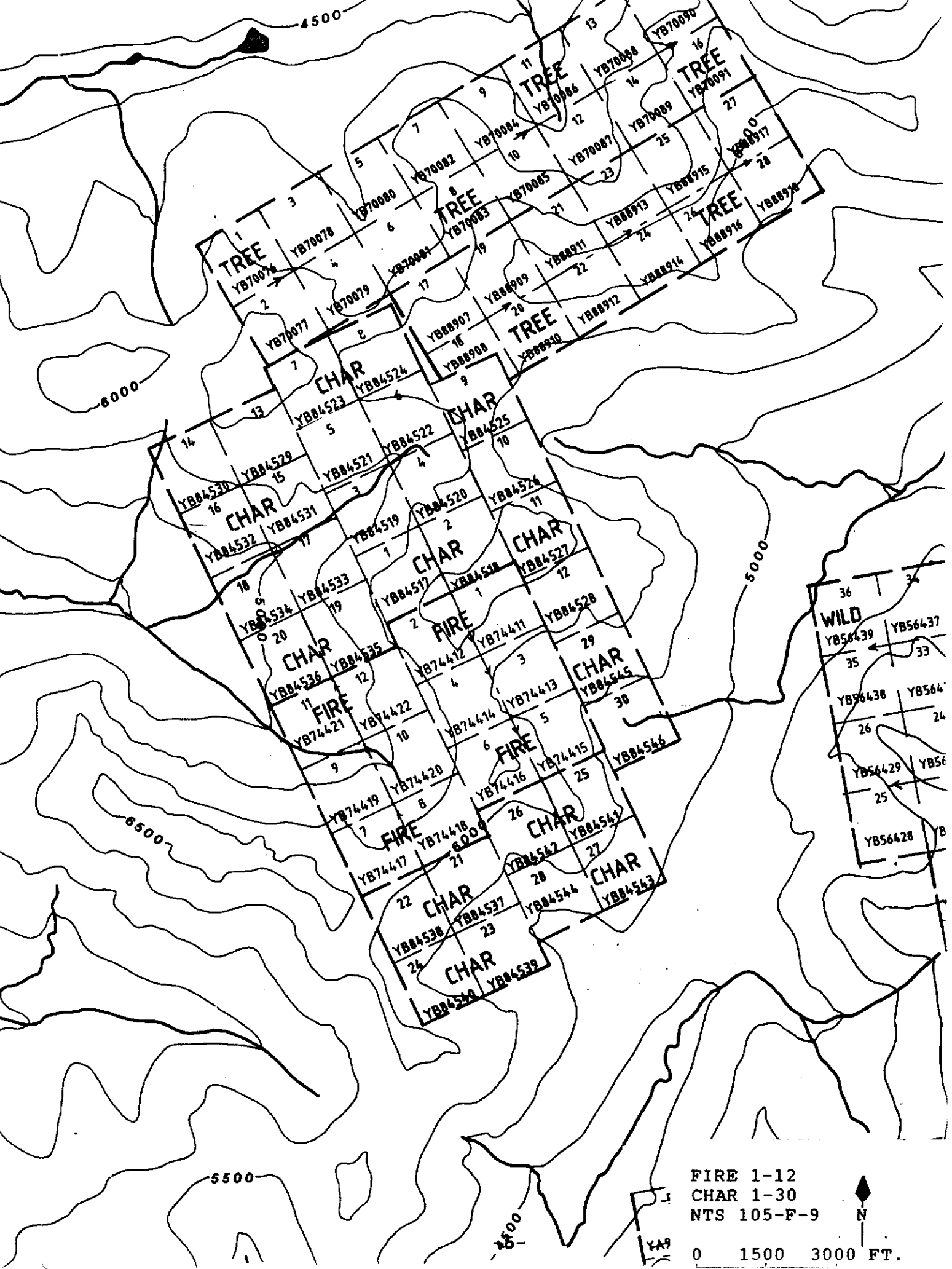
ROCK SAMPLE DESCRIPTIONS

- FBK-1 > bedded barite talus with traces of disseminated pyrite and galena concentrated in some of the beds
- FBK-2 > bedded barite talus with 0.5% galena and trace pyrite in some beds
- FBK-3 > flow banded rhyolite sub-crop with abundant pyrite occurring as bands, wisps and disseminations
- TTF97R01 > dirty grey barite talus mineralized with coarse and fine-grained pyrite
- TTF97R02 > light green sericitized felsic volcanic talus mineralized with trace galena, rock has distinctive marl type weathering
- TTF97R03 > creamy white sucrosic barite talus
- TTF97R04 > sericite schist talus mineralized with 2-3% fine disseminated pyrite
- TTF97R05 > extremely vuggy and siliceous volcanic with around 4% pyrite
- TTF97R06 > flow-banded rhyolite sub-crop as FBK-3
- TTF97R07 > as above

EXPENSE SUMMARY

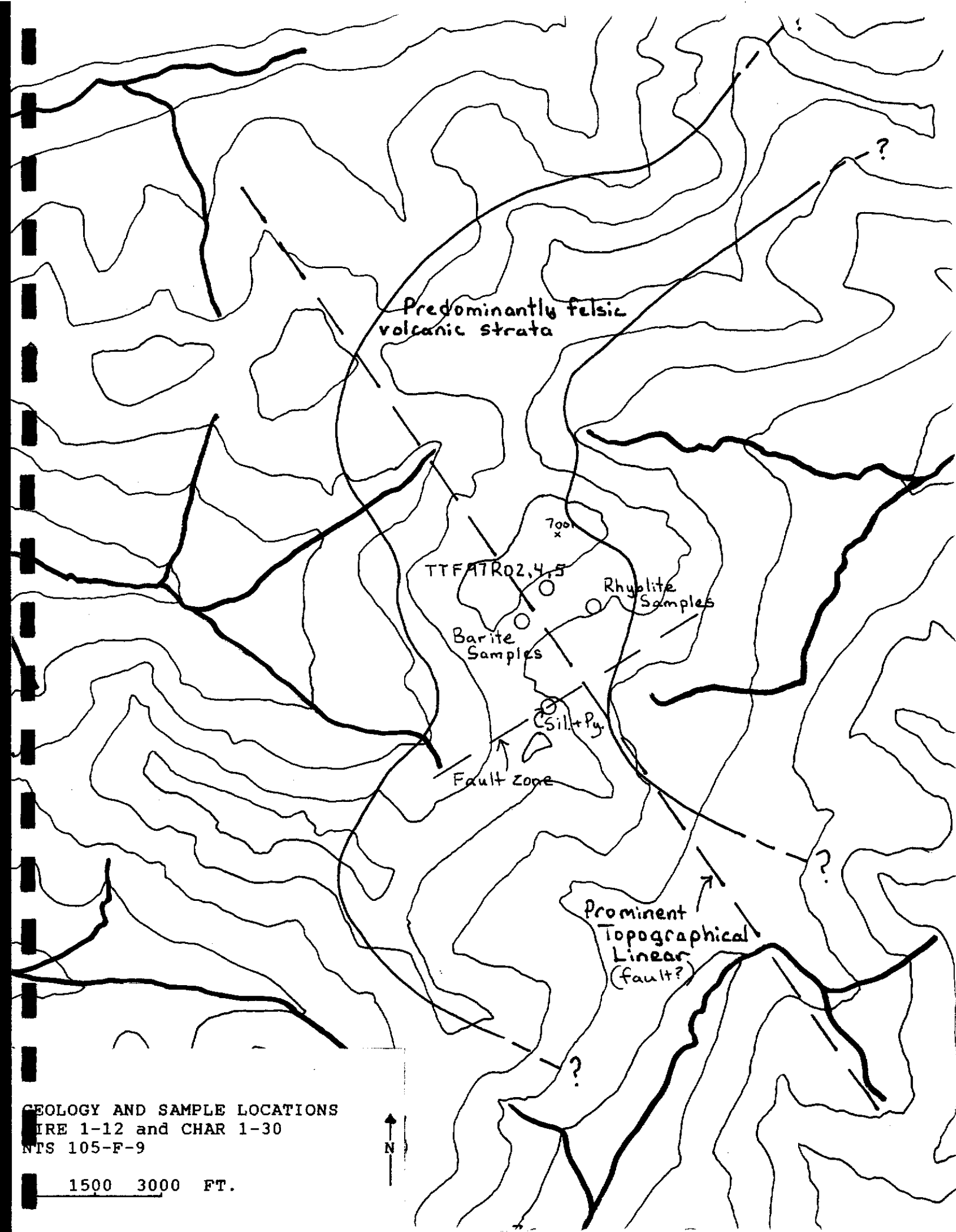
Wages [Bernie Kreft 0.8 day @ \$375.00/day]	=	\$300.00
Wages [Tim Termuende 0.8 day @ \$375.00/day]	=	\$300.00
Geochemistry [10 samples @ \$22.47/sample]	=	\$224.70
Assay [FBK-1 overlimit]	=	\$8.00
Helicoter [2.4 hours at \$815.50/hour]	=	\$1957.20
Wages [Bernie Kreft 2.0 days report work]	=	<u>\$750.00</u>
Total	=	\$3539.90

I would like to apply \$3,000.00 worth of the above expenses towards renewal of the Char # 1-30 quartz claims.

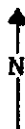


FIRE 1-12
 CHAR 1-30
 NTS 105-F-9

0 1500 3000 FT.



GEOLOGY AND SAMPLE LOCATIONS
SIRE 1-12 and CHAR 1-30
NTS 105-F-9



1500 3000 FT.

08/07/97

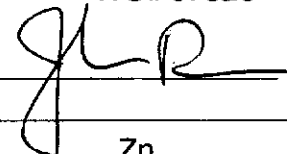
Assay Certificate

Page 1

Bernie Kreft

WO# 07825

Certified by



Sample #	Au ppb	Ag ppm	Cu ppm	Pb ppm	Zn ppm	Cd ppm
FBK - 1	6	>50.0	9	5760	185	1.2
FBK - 2	6	27.3	4	3280	83	1.1
FBK - 3	<5	3.0	58	1440	1313	11.8
TTI97R01	7	0.8	199	35	1973	12.9
TTI97R02	41	34.2	6	6970	582	3.7
TTI97R03	7	1.5	9	183	16	<0.1
TTI97R04	16	39.3	24	>10000	235	1.3
TTI97R05	<5	1.4	39	1220	10	<0.1
TTI97R06	14	34.2	7	2830	59	0.7
TTI97R07	<5	7.9	70	>10000	>10000	41.9
TTI97R08	<5	7.2	86	>10000	>10000	186.9
TTF97R01	8	4.5	9	3110	812	3.0
TTF97R02	<5	0.5	8	750	317	2.1
TTF97R03	<5	5.6	3	283	311	2.4
TTF97R04	<5	0.4	10	115	85	0.4
TTF97R05	<5	0.3	10	130	177	0.7
TTF97R06	22	2.7	43	2280	1699	40.7
TTF97R07	20	2.2	59	1960	1709	26.2



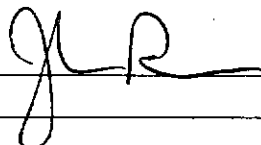
16/07/97

Assay Certificate

Page 1

Bernie Kreft

WO# 07825a

Certified by 

Sample #	Ag g/mt	Pb %	Zn %
FBK - 1	56.1		
TTI97R04		2.23	
TTI97R07		12.70	0.92
TTI97R08		11.40	4.47

