

093793

Geological Assessment Report

For The

Bnob Mineral Property
[Ice 1-8 Claims]
NTS 105-F-10

For

Eagle Plains Resources [EPL:ASE]
And
Miner River Resources [MRG:ASE]
Joint-Venture

By

Bernie Kreft
October 16, 1997

TABLE OF CONTENTS

Summary And Conclusions1

Introduction1

Geology1

Mineralization2

Reccomendations2

Prospectors Certificate2

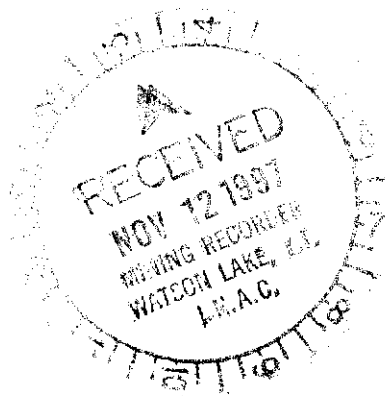
Rock Sample Descriptions3

Expense Summary4

Property Location Map5

Geology And Sample Location Map6

Geochemical Results7



This report has been examined by
the Geological Evaluation Unit
under Section 53 (4) Yukon Quartz
Mining Act and is allowed as
representation work in the amount
of \$ 800.00.

M. Burke
for Regional Manager, Exploration and
Geological Services for Commissioner
of Yukon Territory.

SUMMARY AND CONCLUSIONS

Exploration work completed on the Ice # 3 and Ice # 7 quartz claims consisted of hand trenching and rock sampling. The purpose of the work was to assess, and check for strike extensions of, two previously discovered barite showings.

Showing # 1 consists of massive bedded barite up to 9.0 metres wide and 60 metres long hosted by felsic volcanic strata. Samples mineralized with syngenetic pyrite and galena returned up to 39.3 ppm Ag and 2.23% Pb. Trenching 100 metres along strike up hill at the ridge crest encountered a 15 cm wide barite bed within the same stratigraphic horizon which hosts showing # 1.

Showing # 2 consists of a massive sucrosic barite outcrop 14.0 metres wide and 40 metres long [open at both ends], mineralized with fine to coarse grained galena and pyrite. Host rock contacts are overburden covered, but locally derived float suggests a black argillite host for the barite bed. Select samples returned up to 12.7% Pb and 4.47% Zn. Trenching of a barite float train 150 metres on strike to the west encountered un-mineralized black argillite.

It is possible the barite of both showings represents the same event, and that a significant system exists at depth, or has been eroded. More work is necessary to fully evaluate the claims.

INTRODUCTION

The Ice 1-8 claims lie in the valley of the McConnell River, in the south-central Yukon Territory, 42km south of Ross River. Elevations on the property range from 1300 to 1600 metres, with topography being moderate to [locally] steep. The exploration season generally lasts from early June to late September.

Access is currently by helicopter only. The Groundhog Creek road comes to within 18km of the property, with a cat trail continuing from the head of the road to within 2.5km of the property.

The claims were staked to cover a barite outcrop [showing # 1] and associated soil geochemical anomalies located by Cyprus-Anvil Mining during 1977 fieldwork.

GEOLOGY

The claims lie at the northern edge of the Omineca Crystalline Belt. Stratigraphy underlying the claims consists of trachytic ash to lapilli tuffs and aphyric, locally amygdaloidal flows, in contact with basinal argillites. The entire succession is considered Devonian to Mississippian in age. This package hosts several VMS deposits, including: the MM [18km to the S.W.] and the Wolf [57km to the S.E.].

MINERALIZATION

Two barite showings with accessory pyrite, galena and sphalerite have been located on the property. Showing # 1 is hosted by felsic volcanic strata and contains minor amounts of fine-grained and disseminated pyrite and galena. Samples returned up to 39.3 ppm Ag and 2.23% Pb. Showing # 2 is hosted by black argillite and contains significant amounts of fine to coarse grained galena. Samples returned up to 12.7% Pb and 4.7% Zn. Although high zinc values were returned from assay, sphalerite could not be identified in hand specimen. The coarse grained nature of the base metal mineralization at Showing # 2 may be due to a recrystallization of the showing, or, the sulphides represent secondary remobilized mineralization.

RECCOMENDATIONS

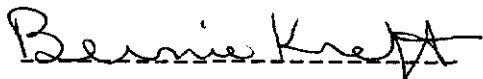
Further work is recommended on the claim group. This work should consist of a soil geochemical and geophysical surveys covering the two known showings and intervening ground.

CERTIFICATION

I, Bernie Kreft, of 1409 Fir Street, Whitehorse, Yukon Territory, was present and witnessed the exploration work described herein. I have twelve years experience prospecting in the Yukon.

This report is based on fieldwork conducted or witnessed by myself.

Respectfully submitted,



Bernie Kreft

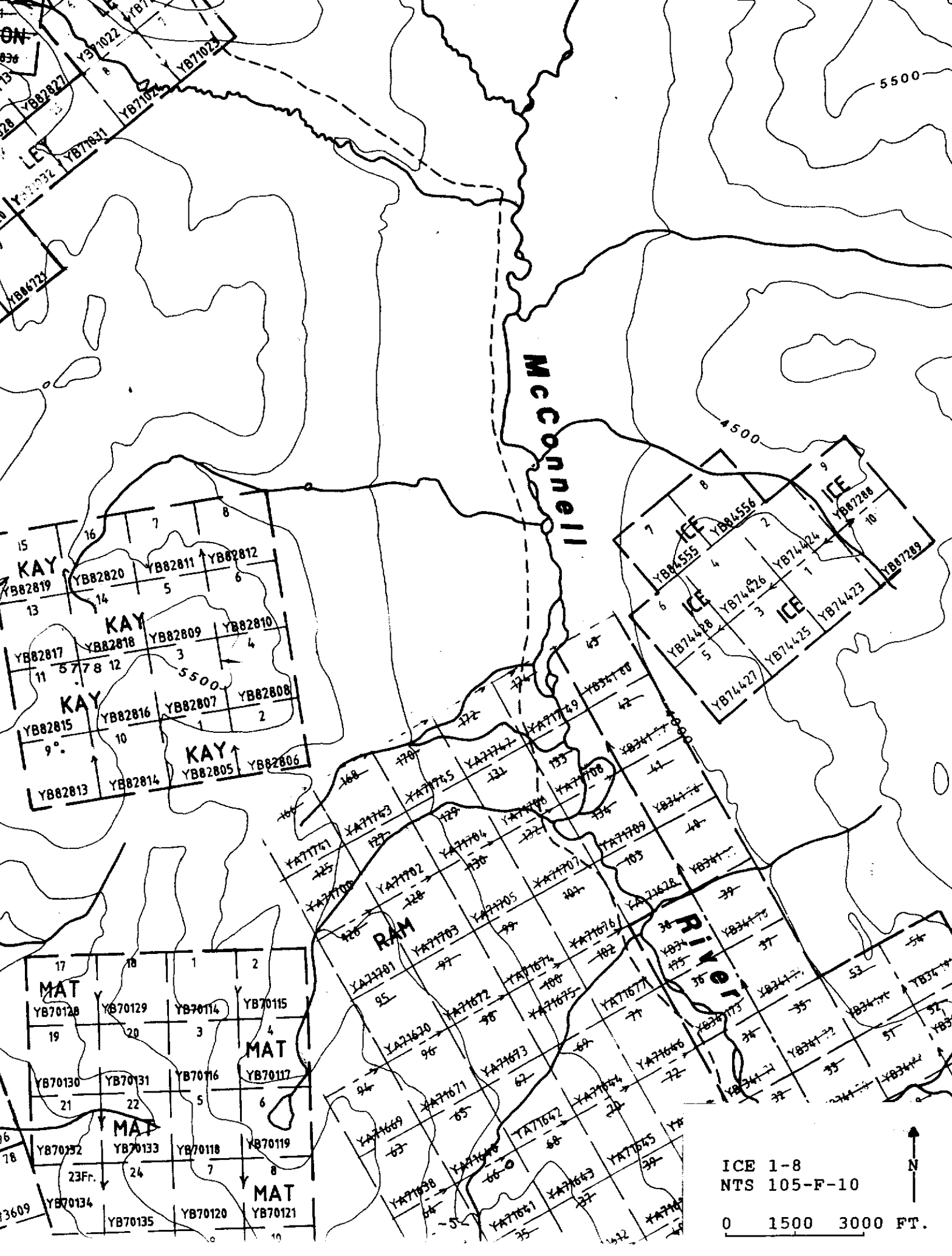
ROCK SAMPLE DESCRIPTIONS

- TTI97R01 > pyritic lamprophyric dyke striking 240
- TTI97R02 > bedded barite with fine galena in preferred horizons from Showing # 1
- TTI97R03 > chalky-white, yellow-weathering felsic volcanic with 3-5% disseminated pyrite
- TTI97R04 > possible secondary galena mineralization within barite of Showing # 1
- TTI97R05 > barite containing blebs and continuous horizons of pyrite from Showing # 2
- TTI97R06 > wispy galena and pyrite bands in barite of Showing # 1
- TTI97R07 > galena in banded barite of Showing # 2
- TTI97R08 > as above

EXPENSE SUMMARY

Wages [Bernie Kreft 0.2 days fieldwork @ \$375.00/day]	=	\$75.00
Wages [Tim Termuende 0.2 days fieldwork @ \$375.00/day]	=	\$75.00
Geochemistry [8 samples @ \$22.47/sample]	=	\$179.76
Assay [TTI97R04,07,08 overlimits]	=	\$40.00
Helicopter [0.1 hours at \$815.50/hour]	=	\$81.50
Wages [Bernie Kreft 1.0 day report work]	=	<u>\$375.00</u>
	Total	= \$826.26

I would like to apply \$200.00 worth of the above expenses towards the renewal of the Ice # 7 and Ice # 8 quartz claims.



McConnell

KAY

15	16	7	8
YB82819	YB82820	YB82811	YB82812
13	14	5	6
YB82817	YB82818	YB82809	YB82810
11	8	3	4
YB82815	YB82816	YB82807	YB82808
9	10	1	2
YB82813	YB82814	YB82805	YB82806

ICE

7	8	9
YB84555	YB84556	YB87288
4	2	10
YB74428	YB74426	YB74424
5	3	1
YB74427	YB74425	YB74423
6	4	8
YB84555	YB84556	YB87289

RAM

125	126	127	128	129	130	131	132	133	134	135	136	137	138	139	140	141	142	143	144	145																			
YA77761	YA77762	YA77763	YA77764	YA77765	YA77766	YA77767	YA77768	YA77769	YA77770	YA77771	YA77772	YA77773	YA77774	YA77775	YA77776	YA77777	YA77778	YA77779	YA77780	YA77781	YA77782	YA77783	YA77784	YA77785	YA77786	YA77787	YA77788	YA77789	YA77790	YA77791	YA77792	YA77793	YA77794	YA77795	YA77796	YA77797	YA77798	YA77799	YA77800

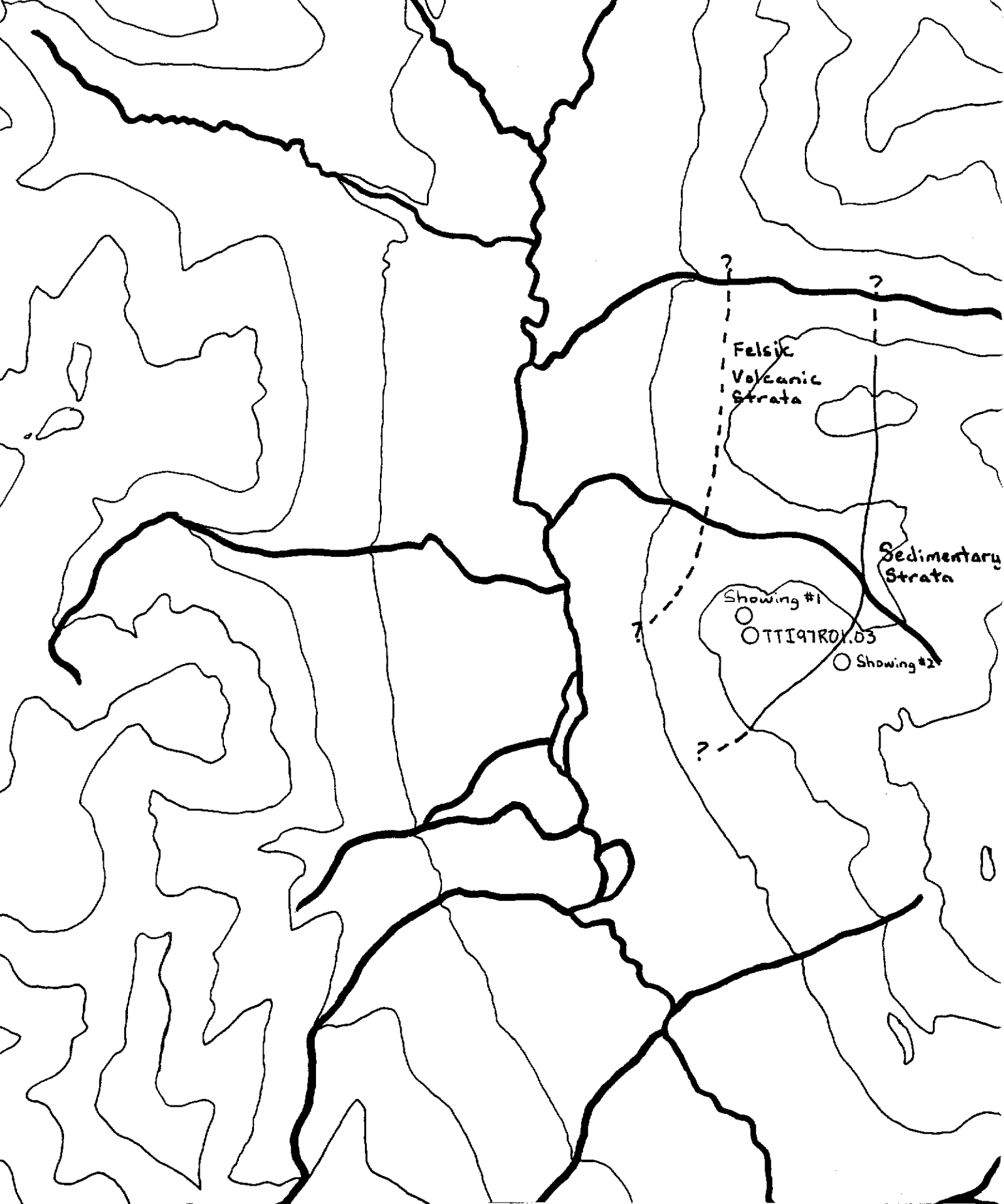
MAT

17	18	1	2
YB70128	YB70129	YB70114	YB70115
19	20	3	4
YB70130	YB70131	YB70116	YB70117
21	22	5	6
YB70132	YB70133	YB70118	YB70119
23	24	7	8
YB70134	YB70135	YB70120	YB70121

ICE 1-8
 NTS 105-F-10

0 1500 3000 FT.

N



GEOLOGY AND SAMPLE LOCATIONS
ICE 1-8
NTS 105-F-10



0 1500 3000 FT.

08/07/97

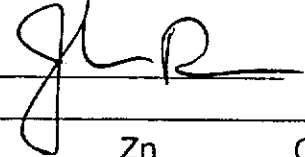
Assay Certificate

Page 1

Bernie Kreft

WO# 07825

Certified by



Sample #	Au ppb	Ag ppm	Cu ppm	Pb ppm	Zn ppm	Cd ppm
FBK - 1	6	>50.0	9	5760	185	1.2
FBK - 2	6	27.3	4	3280	83	1.1
FBK - 3	<5	3.0	58	1440	1313	11.8
TTI97R01	7	0.8	199	35	1973	12.9
TTI97R02	41	34.2	6	6970	582	3.7
TTI97R03	7	1.5	9	183	16	<0.1
TTI97R04	16	39.3	24	>10000	235	1.3
TTI97R05	<5	1.4	39	1220	10	<0.1
TTI97R06	14	34.2	7	2830	59	0.7
TTI97R07	<5	7.9	70	>10000	>10000	41.9
TTI97R08	<5	7.2	86	>10000	>10000	186.9
TTF97R01	8	4.5	9	3110	812	3.0
TTF97R02	<5	0.5	8	750	317	2.1
TTF97R03	<5	5.6	3	283	311	2.4
TTF97R04	<5	0.4	10	115	85	0.4
TTF97R05	<5	0.3	10	130	177	0.7
TTF97R06	22	2.7	43	2280	1699	40.7
TTF97R07	20	2.2	59	1960	1709	26.2



16/07/97

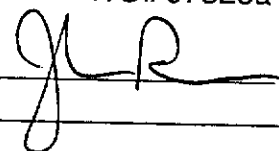
Assay Certificate

Page 1

Bernie Kreft

WO# 07825a

Certified by



Sample #	Ag g/mt	Pb %	Zn %
FBK - 1	56.1		
TTI97R04		2.23	
TTI97R07		12.70	0.92
TTI97R08		11.40	4.47

