

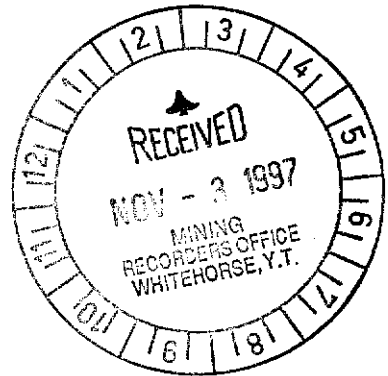
093687

LINE CUTTING AND PICKETING

NICK CLAIMS

JUNE 14 - 17, 1997

by
GARY LEE
DAN HALL



QUARTZ CLAIMS: NICK 14-18 YB67235 - YB67239
NICK 19-20 YB67154 - YB67155
NICK 21-24 YB67240 - YB67243
NICK 25-30 YB67156 - YB67161
NICK 31-36 YB96307 - YB96312
NICK 37 FR
NICK 38 FR
NICK 1 YB36900
NICK 4 YB36903

WHITEHORSE MINING DISTRICT
MAP 105 D 3

LATITUDE 60° 12' LONGITUDE 135° 08'

This report has been examined by
the Geological Evaluation Unit
under Section 53 (4) Yukon Quartz
Act and is allowed as
representation work in the amount
of \$ 2756.00.

M. B. B.
for Regional Manager, Exploration and
Geological Services for Commissioner
of Yukon Territory.

TABLE OF CONTENTS

	<u>Page No</u>
INTRODUCTION	1
PURPOSE	1
VALUE OF ASSESSMENT WORK	2
CLAIM MAP 1:30,000	3
TOPOGRAPHICAL AND GRID MAP	4

INTRODUCTION

MYSELF (BOX 5348, WHITEHORSE) AND DAN HALL (11 CANYON CRES., WHITEHORSE) ESTABLISHED 10.9 KM OF FLAGGED AND PICKETED GRID ON THE NICK CLAIMS (SEE 1:30,000 CLAIM MAP Page 3 AND 1:20,000 TOPO AND GRID MAP Page 4) BETWEEN JUNE 14-17, 1997. THE BASELINE WAS EXTENDED TO 4150E. THIS 5000N BASELINE RUNS AT A BRG. OF 90° TRUE WITH THE PICKETED LINES RUNNING AT 360° TRUE. THESE CROSS LINES ^{ARE} STATIONED AT 20 METRES AND MARKED ON METAL TAGS STAPLED TO THE PICKETS. THE LINES RANGED FROM 4820N TO 6500N. WE COMMUTED DAILY BY 4X4 TRUCK FROM WHITEHORSE AND THENCE WALKED TO CLAIMS.

PURPOSE

THE PURPOSE OF THIS GRID IS TO CONDUCT A GEOPHYSICAL SURVEY IN 1998.

RESPECTFULLY SUBMITTED

Gary Lee

VALUE OF ASSESSMENT WORK

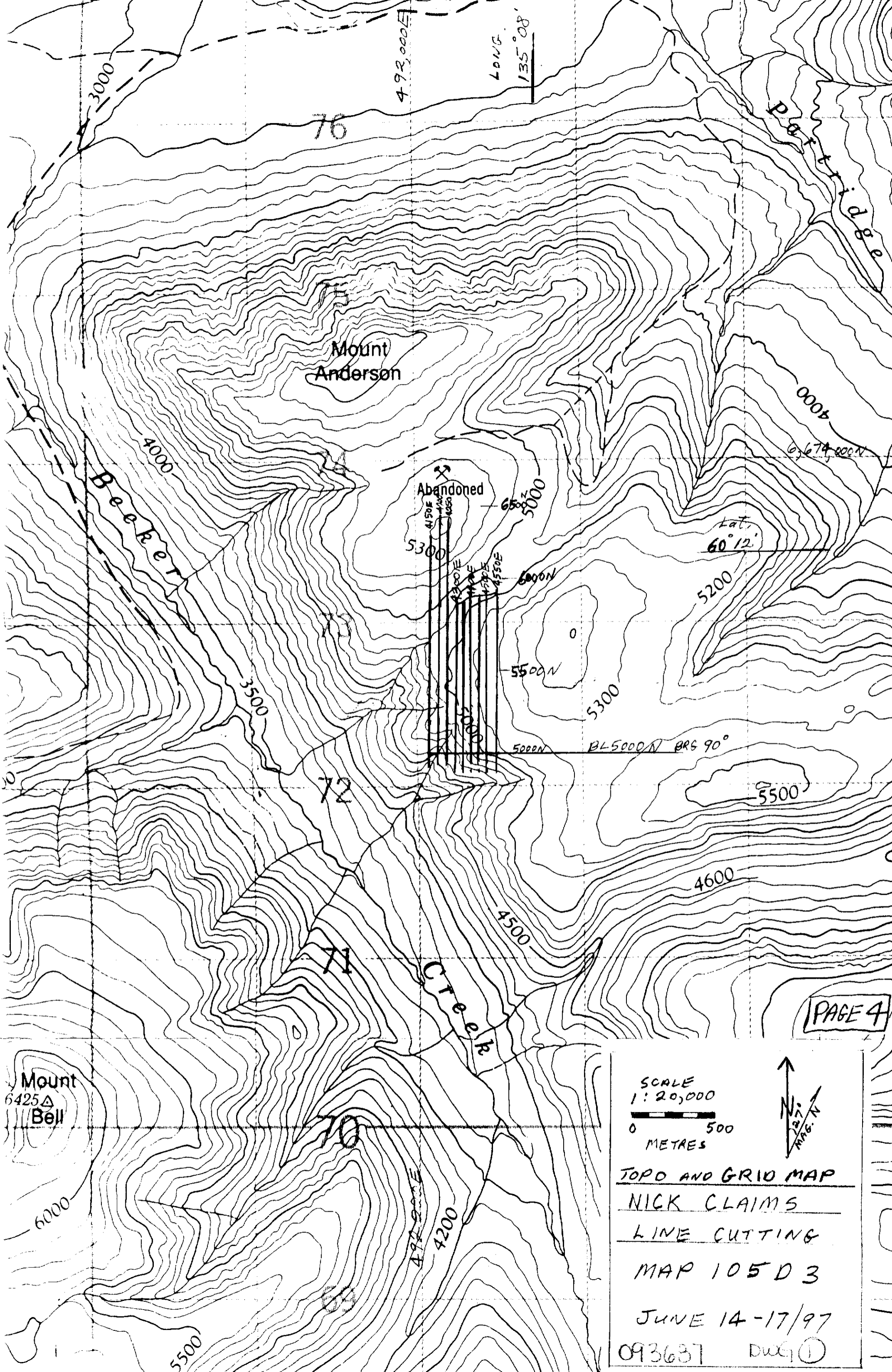
NICK QUARTZ CLAIMS

ENGINEER	$3\frac{1}{2}$ DAYS [Ⓟ] × 350./day =	\$ 1225.00
ASSISTANT	$3\frac{1}{2}$ DAYS [Ⓟ] × 275./day	962.50
4x4 TRUCK	3.5×55 /day	192.50
	420 Km × 30¢/Km	126.00
SUPPLIES (PICKETS, HITCHAIN TREAD, AND FLAGGING, ETC)		250.00
	TOTAL	<u>\$ 2756.00</u>

NORTH
MAP 10503
Scale 1:30,000



1997 5000E
Grid 5000N
Sighted 10.94 km
at 20m, spacing
of Jay Lu
June 17/97



LONG. 135° 08'

Mount Anderson

Beecher Creek

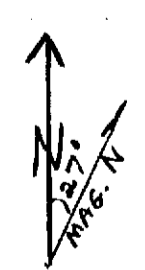
Abandoned

Lat. 60° 12'

BL 5000N BRG 90°

PAGE 4

SCALE
1:20,000
0 500
METRES



TOPO AND GRID MAP
NICK CLAIMS
LINE CUTTING
MAP 105 D 3
JUNE 14-17/97
093637 DWG ①

Mount
6425Δ
Bell

71

Creek

70

492,000E

4200

5500

6000

4600

5500

5500N

6000N

6500

5300

5200

5300

3500

4000

0000

6,674,000N

492,000E

3000

76