

SURVEY REPORT
ON LOCATION LINE SURVEY
MAC 1 TO 4 and JEANIE 1 TO 4
MINERAL CLAIMS (QUARTZ)

WHITEHORSE MINING DISTRICT
NEAR BRAEBURN
MAPSHEET 105 E/12

LAT. 61 32 N
LONG. 135 49 W

CLIENT: 14976 YUKON INC.

REPORT BY: B.D. Mac Lean
Reporting Period: May 5 1997



14976 Yukon Inc.
1413 Holly St.
Whitehorse Y.T.
Y1A 4V2

Location Line Survey
Report

2

CLAIM STATUS

Claims are held by 14844 YUKON INC. and optioned to 14976 YUKON INC. as registered with the Whitehorse mining recorders office.

Location line survey completed as part of yearly representation work and to allow this value to cover grouping of MAC 1-4 and JEANIE 1-12 FOR ONE YEAR.

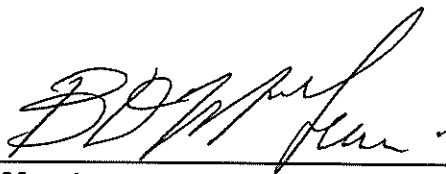
FIELD SURVEY

This survey was executed on May 5, 1997 by a 3 person survey crew of Yukon Engineering Services under the direction of Mr. G. Aucoin C.L.S.
See copy of plan attached to this report.

VALUE OF WORK: \$ 2675.00

See invoice attached.

REPORT PREPARED BY:



B.D. Mac Lean

S-104B
 S-75B
 S-64B
 S-200B
 I.G.
 S-107B
 S-296B
 S-52FS/D
 S-295B

CREEK

S-69B

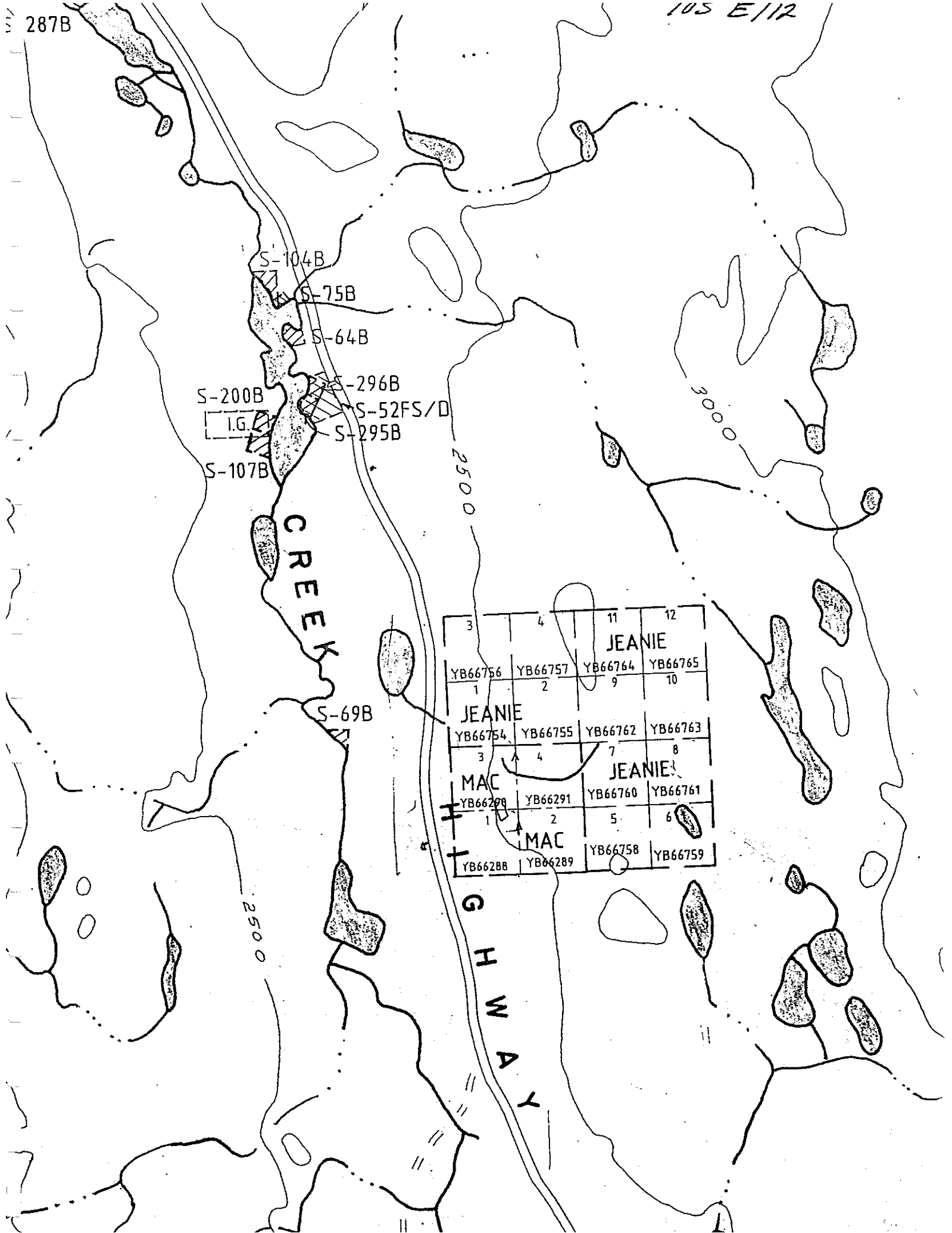
3	4	11	12
YB66756	YB66757	YB66764	YB66765
1	2	9	10
JEANIE			
YB66754	YB66755	YB66762	YB66763
3	4	7	8
MAC	JEANIE	YB66760	YB66761
YB66298	YB66291	5	6
MAC			
YB66288	YB66289	YB66758	YB66759

GHWAY

2500

2500

3000





1 Calcite Business Centre
151 Industrial Road, Whitehorse, Yukon Y1A 2V3
Tel. (403) 668-2000 Fax. (403) 667-2220

GST # R106361645

May 7, 1997

14976 Yukon Inc.
1413 Holly Street
Whitehorse, Yukon
Y1A 4V2

Invoice #97-008-1323

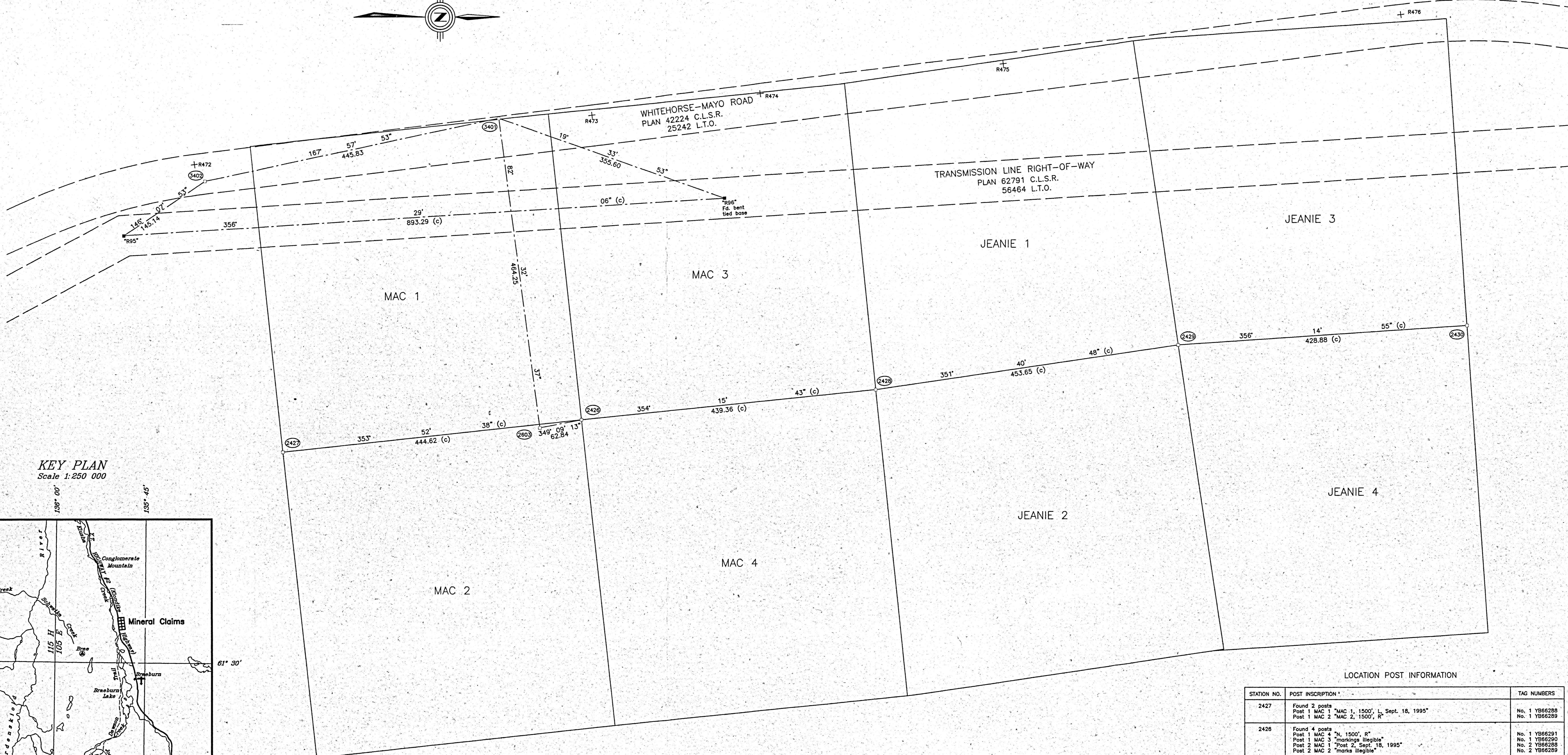
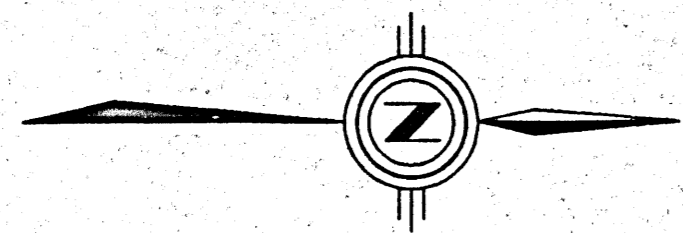
Re: Location Line Survey of Mineral Claims Mac 1 - 4 & Jeanie 1 - 4

Our Fee:	\$2,500.00
GST	\$ 175.00
BALANCE DUE	<u>\$2,675.00</u>

TERMS:

**NET 30 DAYS FROM DATE OF INVOICE.
2% PER MONTH INTEREST CHARGED ON OVER DUE ACCOUNTS.**

093658



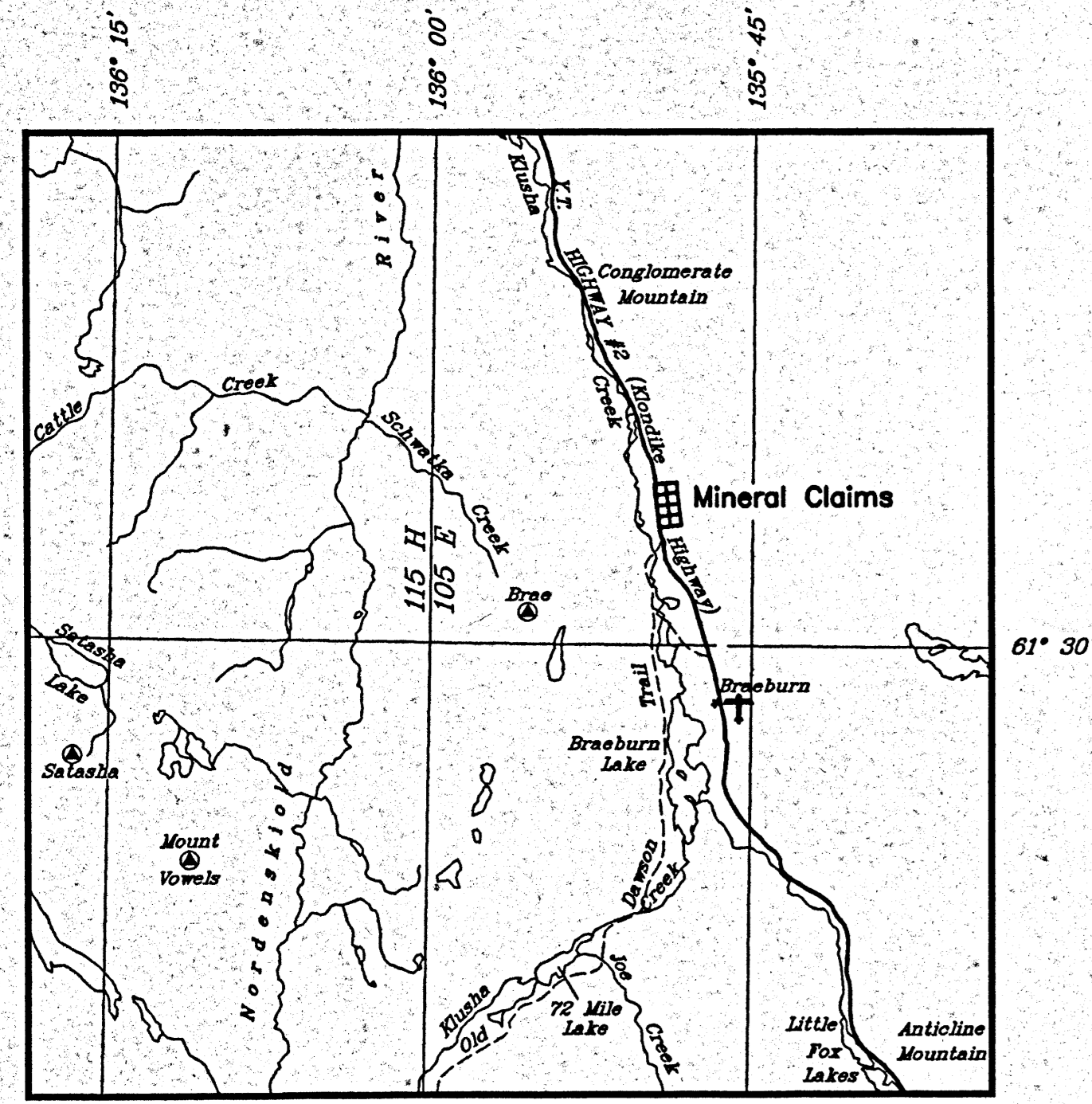
SKETCH SHOWING
LOCATION LINE SURVEY OF
**MINERAL CLAIMS
MAC 1 TO 4 AND JEANIE 1 TO 4**
NEAR BRAEBURN
WHITEHORSE MINING DISTRICT
YUKON TERRITORY

SCALE 1 : 2500
50 25 0 50 100 150 200 250 metres

LEGEND :
THIS SURVEY WAS EXECUTED ON MAY 5, 1997.
BY GABRIEL AUCCOIN, C.L.S.
FOR 14976 YUKON INC.
Bearings are UTM Grid, referred to the central meridian of UTM Zone 8 (135° West Longitude).
Old pattern iron post found shown thus: ■
I.B. placed shown thus: □
Traverse lines and stations shown thus: —○—
Distances are expressed in metres and decimals thereof.

CERTIFIED CORRECT :
Gabriel Aucoin May 13/97
Gabriel Aucoin, C.L.S. Date

KEY PLAN
Scale 1:250 000



LOCATION POST INFORMATION

STATION NO.	POST INSCRIPTION *	TAG NUMBERS
2427	Found 2 posts Post 1 MAC 1 "MAC 1, 1500', L, Sept. 18, 1995" Post 1 MAC 2 "MAC 2, 1500', R"	No. 1 YB66288 No. 1 YB66289
2428	Found 4 posts Post 1 MAC 3 "N, 1500', R" Post 1 MAC 3 "Markings illegible" Post 2 MAC 1 "Post 2, Sept. 18, 1995" Post 2 MAC 2 "Mark illegible"	No. 1 YB66291 No. 1 YB66290 No. 2 YB66288 No. 2 YB66289
2428	Found 4 posts Post 1 JEANIE 2 "Post 1, Jeanie 2, N, 1500', R 1500', May 9/96, R. Volaine" Post 1 JEANIE 1 "Post 1, Jeanie 1, N, 1500', L 1500', May 9/96, R. Volaine" Post 2 MAC 3 "Post 2, MAC 3, Sept. 18, 1995, R. L. McIntyre" Post 2 MAC 3 "Post 2, MAC 3, Sept. 18, 1995, R. L. McIntyre"	No. 1 YB66755 No. 1 YB66754 No. 1 YB66291 No. 2 YB66290
2429	Found 4 posts Post 1 JEANIE 3 "Post 1, Jeanie 3, N, 1500', L 1500', May 9/96, R. Volaine" Post 1 JEANIE 4 "Post 1, Jeanie 4, N, 1500', R 1500', May 9/96, R. Volaine" Post 2 JEANIE 2 "Post 2, Jeanie 2, May 9/96, R. Volaine" Post 2 JEANIE 1 "Post 2, Jeanie 1, May 9/96, R. Volaine"	No. 1 YB66756 No. 1 YB66757 No. 2 YB66755 No. 2 YB66754
2430	Found 2 posts Post 2 JEANIE 4 "Post 2, Jeanie 4, May 9/96, R. Volaine" Post 2 JEANIE 3 "Post 2, Jeanie 3, May 9/96, R. Volaine"	No. 2 YB66757 No. 2 YB66756