

Brief Summary Report and  
Drill Program on Donna Claims  
1-8 YB51324-YB51331 - Map 105A15

On July 24 1996 a Diamond Drill was Driven to Kil 124 Nahanni Range Rd. From here it was taken to the Drill site with a total of 5 loads. The Drill was set up on Donna claims No 5. Where a total of one hole at a Distance of 190 FT, Driven at a 60° angle to the South West.

Here is the Drilling Log 093558

- 0-20 FT = 1st 6 FT is Barren Granite Diorite  
From 6 FT to 7½ FT narrow veins of Quartz with minor Pyrites. The rest of the hole from 7½ FT to 20 FT is Barren Granite Diorite
- 20-30 FT - Mostly Barren Granite Diorite with a narrow 2" vein of Pyrite at the 23 FT level.
- 30-40 FT - First 3 FT from 30 to 33 FT is Barren Granite void of all sulfides. From 33 FT to 36 FT a Greenish Altered Volcanics was encountered with minor amount of Pyrite.
- 40-50 - Again Barren Granite Diorite with small veins of Pyrite around the 45 FT ~~level~~ depth.
- 50-57 FT Barren Granite Diorite
- 57-60 FT Small amounts of Pyrites again in 2" Quartz veins. Rest is Granite Diorite
- 60'-70 FT Small amount of Pyrites in about five fractures in the Granite Diorite
- 70-90 FT - Void of any kind of sulfides.  
All Barren Granite Diorite for 20 FT
- 90' to 93 FT Barren Granite Diorite
- 93 to 98 FT The Drill encountered about 5 FT of Altered Greenish Volcanics with a little more Pyrites than the other holes. Also there's narrow pink veins of Zeolites.
- 98 to 100 FT - Again we are back in the Barren Granites
- 100 FT - 102 FT Hit this Greenish Altered Volcanics again with Pyrite in small amounts. Also lots of pinkish Zeolites veins.
- 102-107 FT Again lots of pinkish Zeolites with very narrow veins of Quartz with Pyrite
- 107 FT to 110 FT Barren Granite Diorites

Drill Project Started July 24 - July 28 1996  
 Total length one hole 190' at 60° to S. West  
 Direction

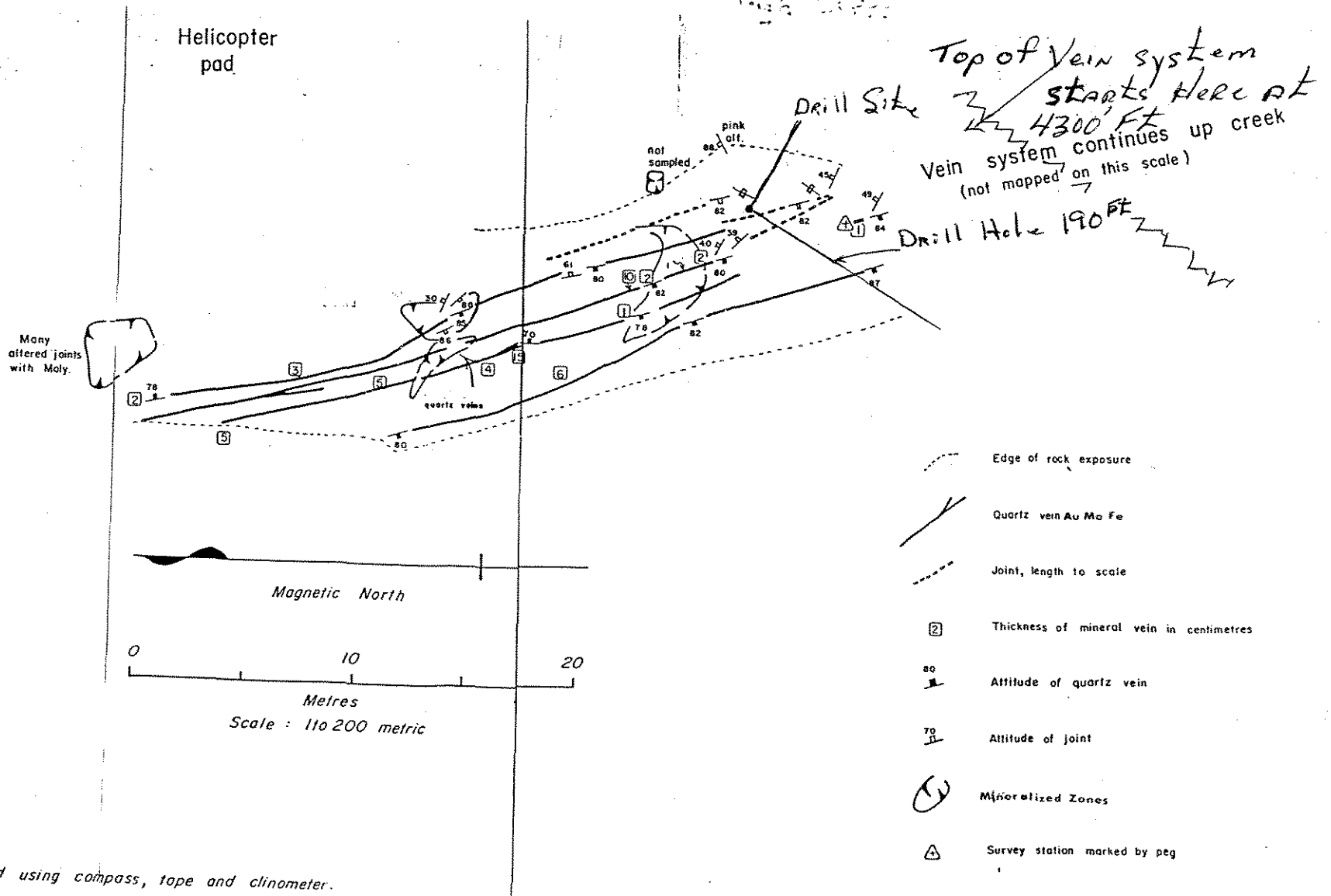
YB51329  
 YB51327  
 Donna claims Post  
 4  
 6  
 5  
 3  
 YB51328  
 YB51326

Sericite - pyrite veins  
 not sampled

veins - creek exposure mapped here

Width of vein system exposed in creek bed

105-A-15  
 DONNA CLAIMS  
 1-8



Mapped using compass, tape and clinometer.

110 FT to 120 - BARREN GRANITE Diorite  
with minor amounts of Pyrite  
in the Fractures.

120-130 FT - BARREN GRANITE Diorites  
Void of all sulfides.

130 FT - 140 FT - BARREN GRANITE - with NARROW veins  
of Pink Zeolites in the Fractures

140-150 FT - Again Nothing but BARREN GRANITES  
with small amounts of Pyrites at  
the Jointings.

151 FT - 152 FT A 2" in. Mineralized Quartz with major  
amount of Pyrites.

152 FT 163 FT BARREN GRANITE Diorite  
which seems to be the story in  
this Drill hole.

163-170 - Lots of small Pinkish veins of  
Zeolites in the GRANITE Diorites at  
the 168 FT Depth. There's a 2" Quartz  
vein with Sulfides

170-175 FT. Another Five FT of BARREN GRANITES  
with these narrow Pinkish Zeolites veins  
through it.

175-180 FT Encountered another Zone of  
Altered Greenish Volcanics with narrow  
veins of Quartz and Pyrites

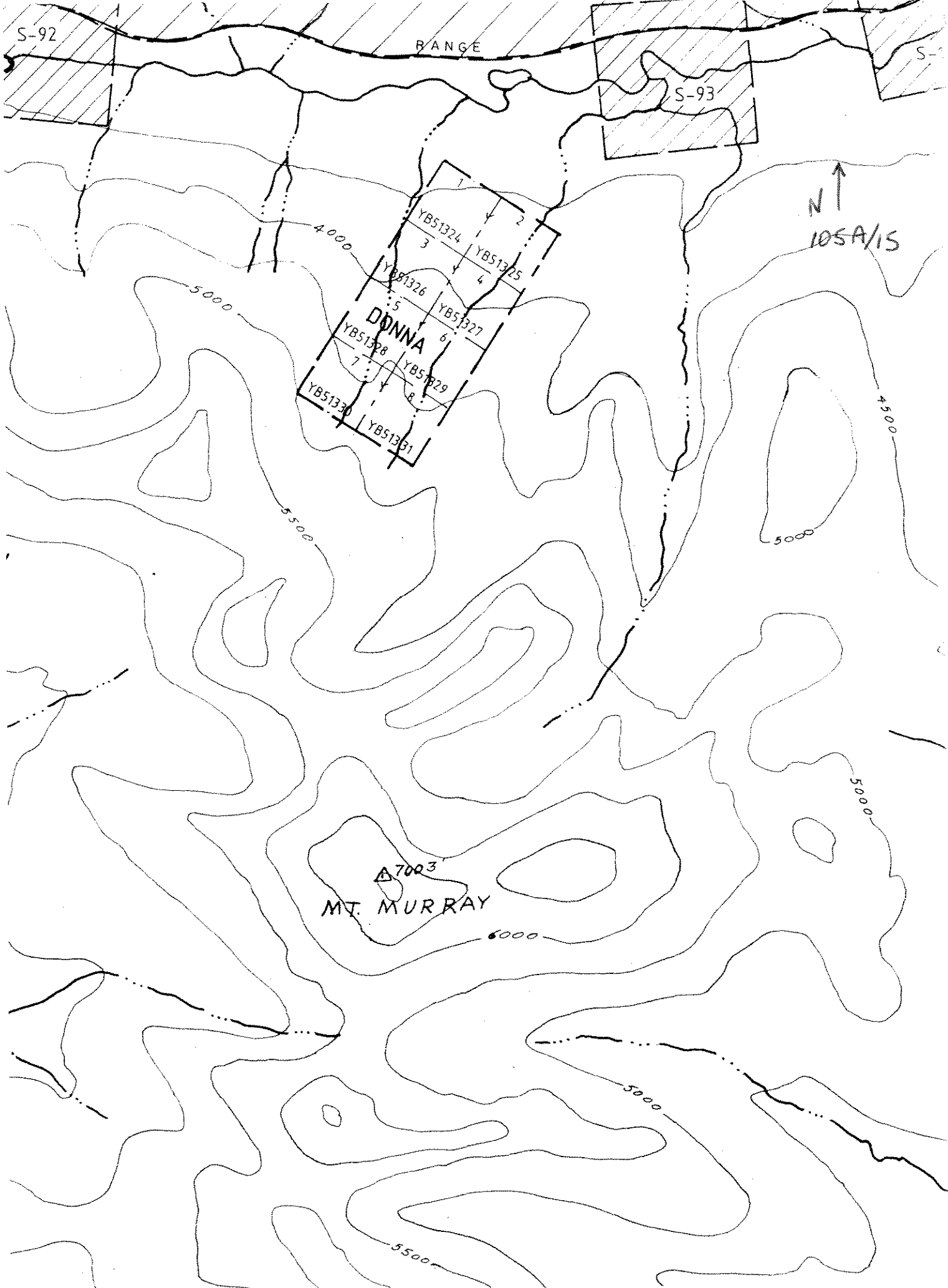
180-190 FT BARREN GRANITE Diorites  
with these narrow Pinkish Zeolites  
veins which seems to be predominant  
in lot of these Drill core.

The Drill Core  
is located at  
ALEX BLACK Place  
at Bradhagenville,  
Mile 7 on Campbell  
Highway.

Dated July 29 1996  
at Watson Lake Yt

ALEX BLACK

Alex Black

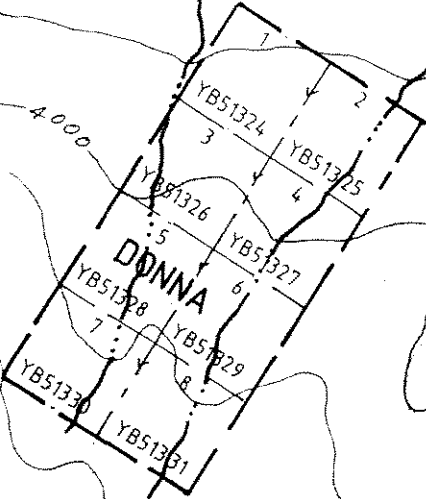


S-92

RANGE

S-93

N ↑  
105A/15



7003  
MT. MURRAY

6000

5000

5500

To Lance Steinberger  
Your 25%

OUR NUMBER	06610
DATE	July 24-28
CUSTOMER'S ORDER	1996
SALESMAN	
TERMS	
F.O.B.	

TAX REG. NO. \_\_\_\_\_  
SOLD TO ALEX BLACK  
Box 5000, Watson Lake  
SHIP TO Drill Program Costs  
ADDRESS Donna 1-8 VIA 105-A.15

INVOICE

QUANTITY	DESCRIPTION	PRICE	AMOUNT
	Cost Drill Rent		6000.00
	Helicopter		2600.00
	Truck Rental to		
	Kil 130 Nahanni Range Rd		400.00
	Food		300.00
	VAN ALTA Exploration		
	Ray Pick Ford		
	Signed		

*R. Pickford*

QAZ4782



REMIT PAYMENT TO:

**TRANS NORTH HELICOPTERS**

TRANS NORTH TURBO AIR LTD.

AIRPORT HANGAR "C" • WHITEHORSE • YUKON • Y1A 3E4  
TELEPHONE (403) 668-2177 FAX (403) 668-3420CHARTERER *A. BLACK*BILLING ADDRESS *Bag 5000*FROM *WATSON LAKE Y1*FROM *WATSON*TO *Murray Mt.*

HOURS

*1.5*REMARKS - NO. OF PASS - FREIGHT  
Kg*slings Drill**R. Pichler  
paid  
by check*

SUB	GL	AMOUNT
		<i>1.5 @ 725 1087.50</i>

			HOLDING TIME:	@	/ HR.
--	--	--	---------------	---	-------

<i>0000323</i>			FUEL	@	/ LITRE
----------------	--	--	------	---	---------

			FUEL	@	/ LITRE
--	--	--	------	---	---------

			MEALS & LODGINGS		
--	--	--	------------------	--	--

			OTHER		
--	--	--	-------	--	--

			OTHER		
--	--	--	-------	--	--

INITIALS	<i>S.C.S.</i>	CHARTERER'S NAME (PRINTED)	<i>Soubliere</i>	SUB TOTAL	<i>1087.50</i>
----------	---------------	----------------------------	------------------	-----------	----------------

		PILOTS SIGNATURE	<i>Soubliere</i>	GOODS & SERVICES TAX	<i>76.13</i>
--	--	------------------	------------------	----------------------	--------------

		ENGINEER'S NAME	<i>B. Barton</i>	REGISTRATION NO. R121483135	
--	--	-----------------	------------------	-----------------------------	--

**TOTAL \$ 1163.63****TRANS NORTH HELICOPTERS**

TRANS NORTH TURBO AIR LTD.

AIRPORT HANGAR "C" • WHITEHORSE • YUKON • Y1A 3E4  
TELEPHONE (403) 668-2177 FAX (403) 668-3420CHARTERER *Alex Black*

BILLING ADDRESS

FROM

FROM *WATSON*TO *Murray**WATSON*

HOURS

*1.5*REMARKS - NO. OF PASS - FREIGHT  
Kg

SUB	GL	AMOUNT
		<i>1.5 HR @ 725 1087.50</i>

			HOLDING TIME:	@	/ HR.
--	--	--	---------------	---	-------

<i>0000323</i>			FUEL	@	/ LITRE
----------------	--	--	------	---	---------

			FUEL	@	/ LITRE
--	--	--	------	---	---------

			MEALS & LODGINGS		
--	--	--	------------------	--	--

			OTHER		
--	--	--	-------	--	--

			OTHER		
--	--	--	-------	--	--

INITIALS	<i>S.C.S.</i>	CHARTERER'S NAME (PRINTED)	<i>Soubliere</i>	SUB TOTAL	
----------	---------------	----------------------------	------------------	-----------	--

		PILOTS SIGNATURE	<i>Soubliere</i>	GOODS & SERVICES TAX	<i>76.13</i>
--	--	------------------	------------------	----------------------	--------------

		ENGINEER'S NAME	<i>B. Barton</i>	REGISTRATION NO. R121483135	
--	--	-----------------	------------------	-----------------------------	--

**TOTAL \$ 1163.63**

CARRIAGE SUBJECT TO TERMS OF PUBLISHED TARIFF.