

BUFF MINERAL CLAIMS

A Geological Report

Location: 138° 49.735' W Longitude
63° 36.675' N Latitude

Quartz Map 115-0-10

KIERAN DAUNT

July 1994 - July 1995

093444

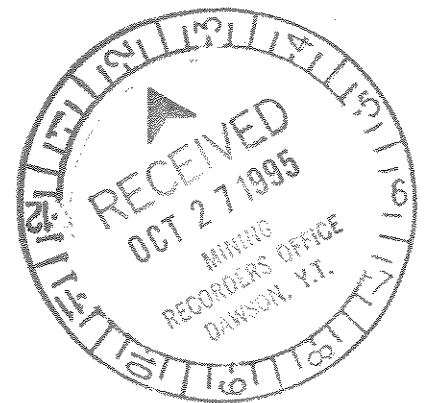


TABLE OF CONTENTS

Page 1	Claim Numbers
Page 2	Introduction
Page 3	Geology
Page 4	Maps
Page 10	Assays
Page 11	Conclusion
Page 12	Costs

Claims

Claims		Grant Number
Buff	1	YB 52312
Buff	2	YB 52313
Buff	3	YB 52314
Buff	4	YB 52315
Buff	5	YB 52316
Buff	6	YB 52317
Buff	7	YB 52877
Buff	8	YB 52878
Buff	9	YB 52879
Buff	10	YB 52880
Buff	19	YB 52318
Buff	20	YB 52319
Buff	25	YB 52320
Buff	26	YB 52321
Buff	27	YB 52322
Buff	28	YB 52323

Claims 100% Owned by Kieran Daunt

INTRODUCTION

These Claims were previously staked because of sporadic gold values. Interest in obtaining more information in the area was the motive in staking these claims once again. The fact that visible gold could be hammered and panned out of samples also contributed to this motivation.

Many traverses were made in the lower Eureka Creek area. A Garmin GPS 95 global positioning device was used to fix locations of posts and geological features. 27 samples were sent in for metallics assay for gold.

Most samples were obtained from exposed bedrock. This exposure was due to Placer Mining activity. Some samples were obtained from bedrock samples drilled up during placer evaluation. 30 days were spent in the field.

GEOLOGY

The mouth of Eureka Creek where it flows into the Indian River is an epithermally altered unit within a highly sheared zone.

This sheared zone represents the Indian River fault trending East-West.

The country rock at the mouth of Eureka Creek is mainly altered quartzite schist with varying amounts of biotite. The quartzite is mylonitic over wide areas suggesting major tectonic movement.

A series of East-West shears vary in width from centimeters to over a meter. Material within the shear zones also varies from blue clay gouge to orange clay to shattered quartz veins to dark grey biotite areas. Pyrites make up between 2% to 5% of Shear zone material. It has also become disseminated in the country rocks to a fair degree (1% to 4%).

L77578A 899589

SCALE 1:31,680



2000

1500

6 BUFF	4	2	10 BUFF	8
YB52317	YB52315	YB52313	YB52880	YB52878
5	3	1 BUFF	9	7
YB52316	YB52714	YB52312	YB52879	YB52877

28 BUFF	26	20
YB52323	YB52321	YB52319
27 BUFF	25	19
YB52322	YB52320	YB52318

12	105	106	111	112	123	122
YB44932	YB52730	YB52731	YB52857	YB52858	YB52869	YB52868
10 B	103	104	109	110	121	120
YB44930	YB52728	YB52729	YB52855	YB52856	YB52867	YB52866
00	8	101	102	107	108	119
YB44928	YB52726	YB52727	YB52853	YB52854	YB52865	YB52864
6	88	87	74	73	117	
YB44926			YB45017	YB52863		
4	90	89	72	71	99	
YB44924	YB44994	YB44993	YB45016	YB45015	YB45003	
2	92	91	70	69	100	
YB44922	YB44996	YB44995	YB45014	YB45013	YB45004	
36	94	93	68	67		
YB44920	YB44998	YB44997	YB45012	YB45011		

CREEK

CLARA B

EUREKA

115-O-10c

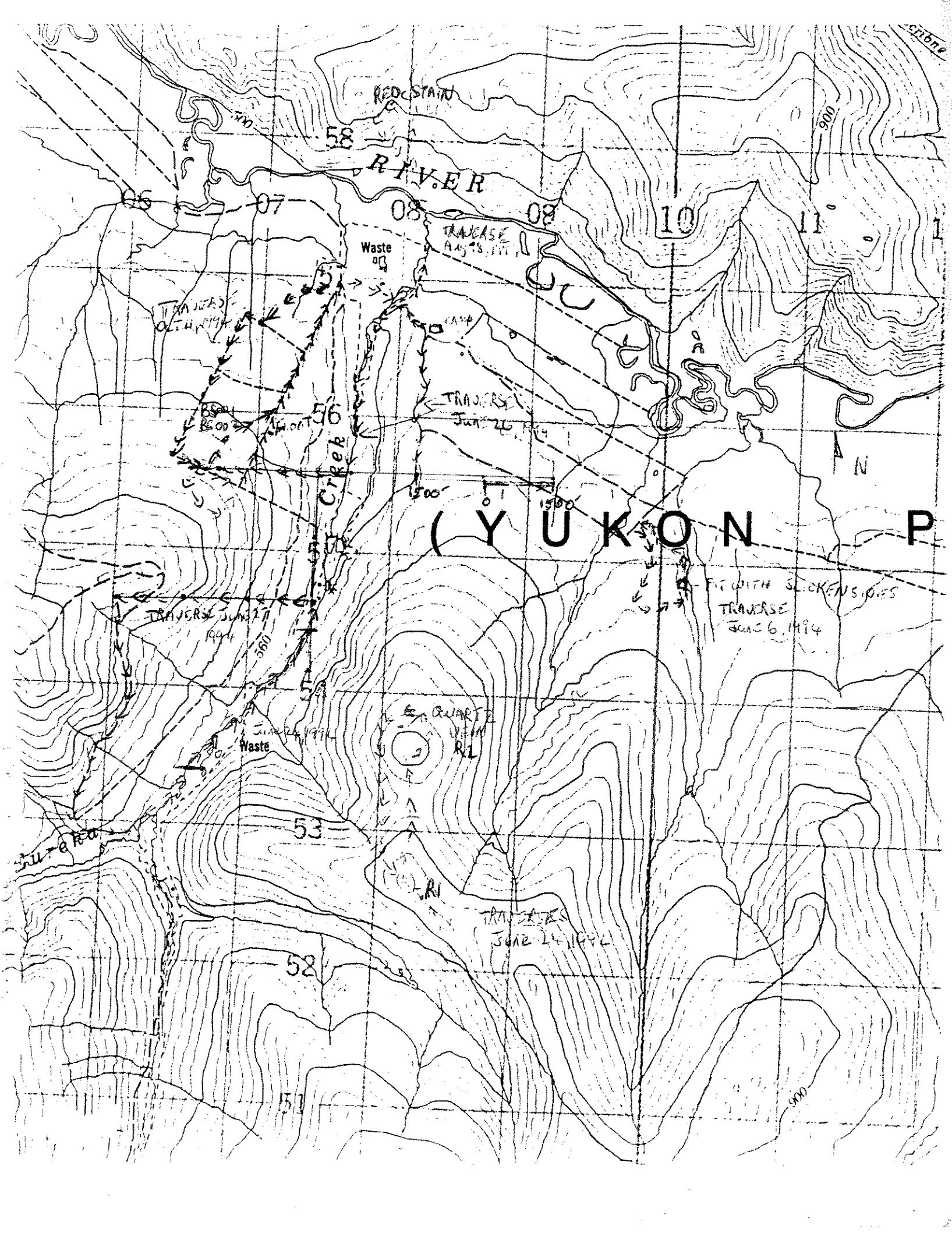
CLARA B

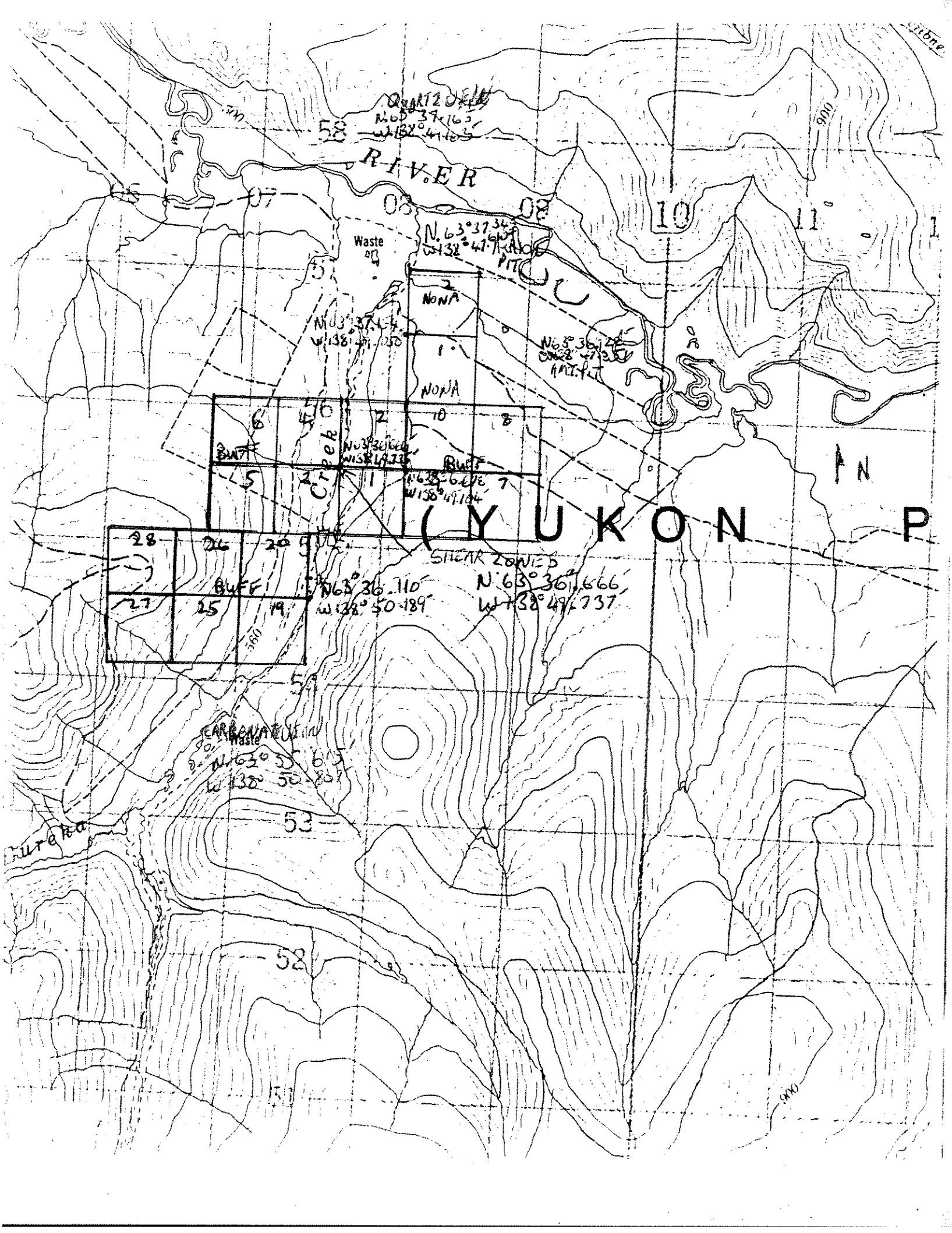
20 YB52890	19	22 GOPHER	21
YB52889	YB52892	YB52891	
18 YB52888	17 YB52887	14 YB52880	13
16 YB52886	15 GOPHER	12 YB52885	11
8 BUFF	7	2 GOPHER	1
YB52878	YB52877	YB52378	YB52377
5 BUFF	4	3 GOPHER	1 YB52535
YB52370	YB52369	YB52368	YB52367
6 YB52370	5	3 YB52538	3 YB52537
8 GOPHER	7 YB52372	6 YB52371	5 YB52539
9 YB52374	8 YB52373	7 YB52540	7 YB52539
10 YB52376	9 YB52375	8 YB52542	8 YB52541
10 YB52376	9 YB52375	10 YB52544	10 YB52543
12 YB52376	11 YB52375	12 YB52546	12 YB52545
14 YB52376	13 YB52375	14 YB52548	14 YB52547
16 MARMOT	15 YB52550	16 YB52548	15 YB52549

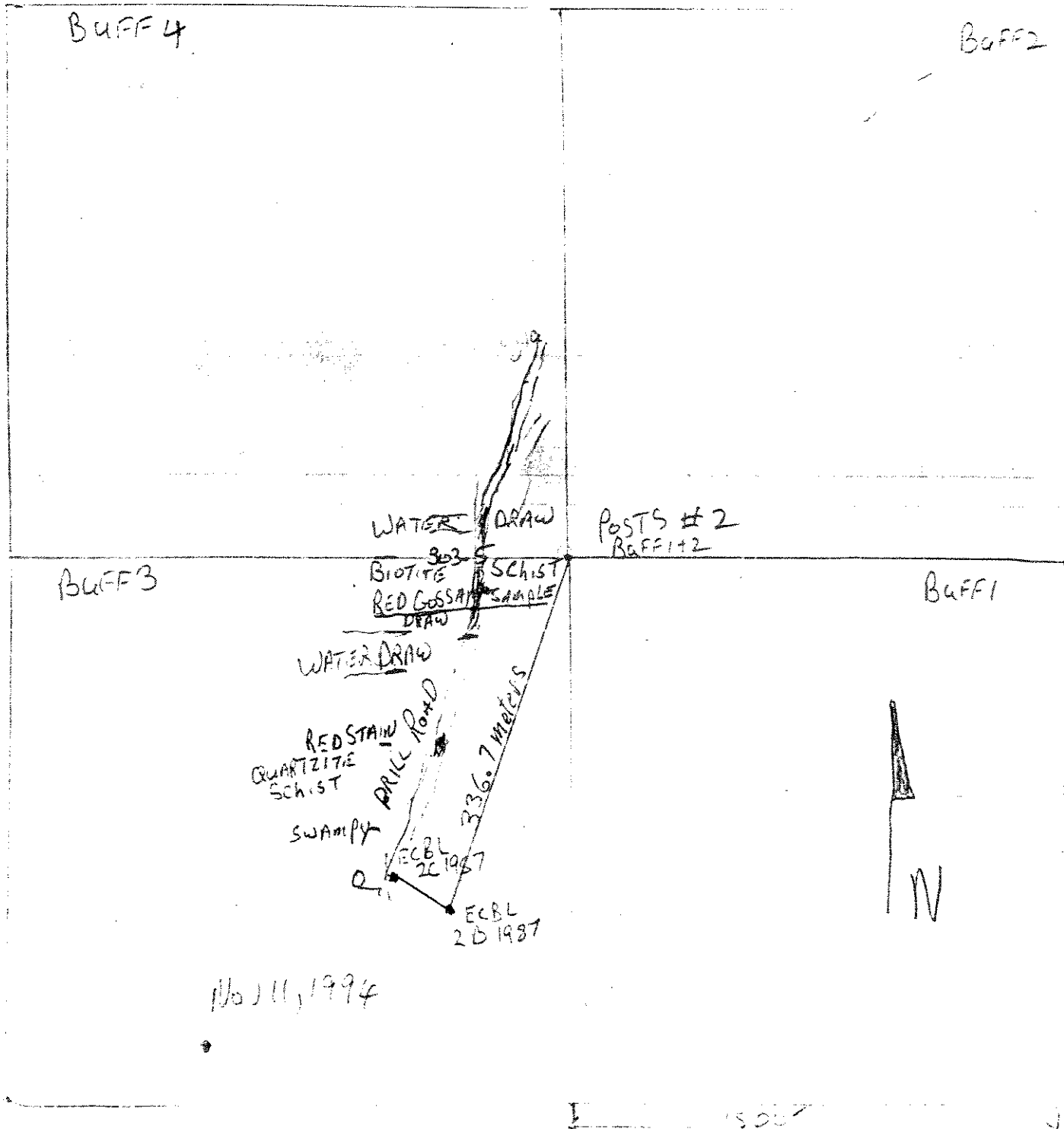
GULF

MARMOT

MARMOT







NOV 11, 1994

Scale
1:500
0 5 10
METERS

SAMPLES

DRILL HOLE 121

N 63° 36.675'
W 138° 49.736'

POST 520
BUFF 1+2

BUFF 01 QUARTZITE SCHIST WHITE CLAY GOUGE

BUFF 02 QUARTZITE SCHIST ORANGE GOUGE

BUFF 03 MYLONITIC QUARTZITE SCHIST
BUFF 04 " " "

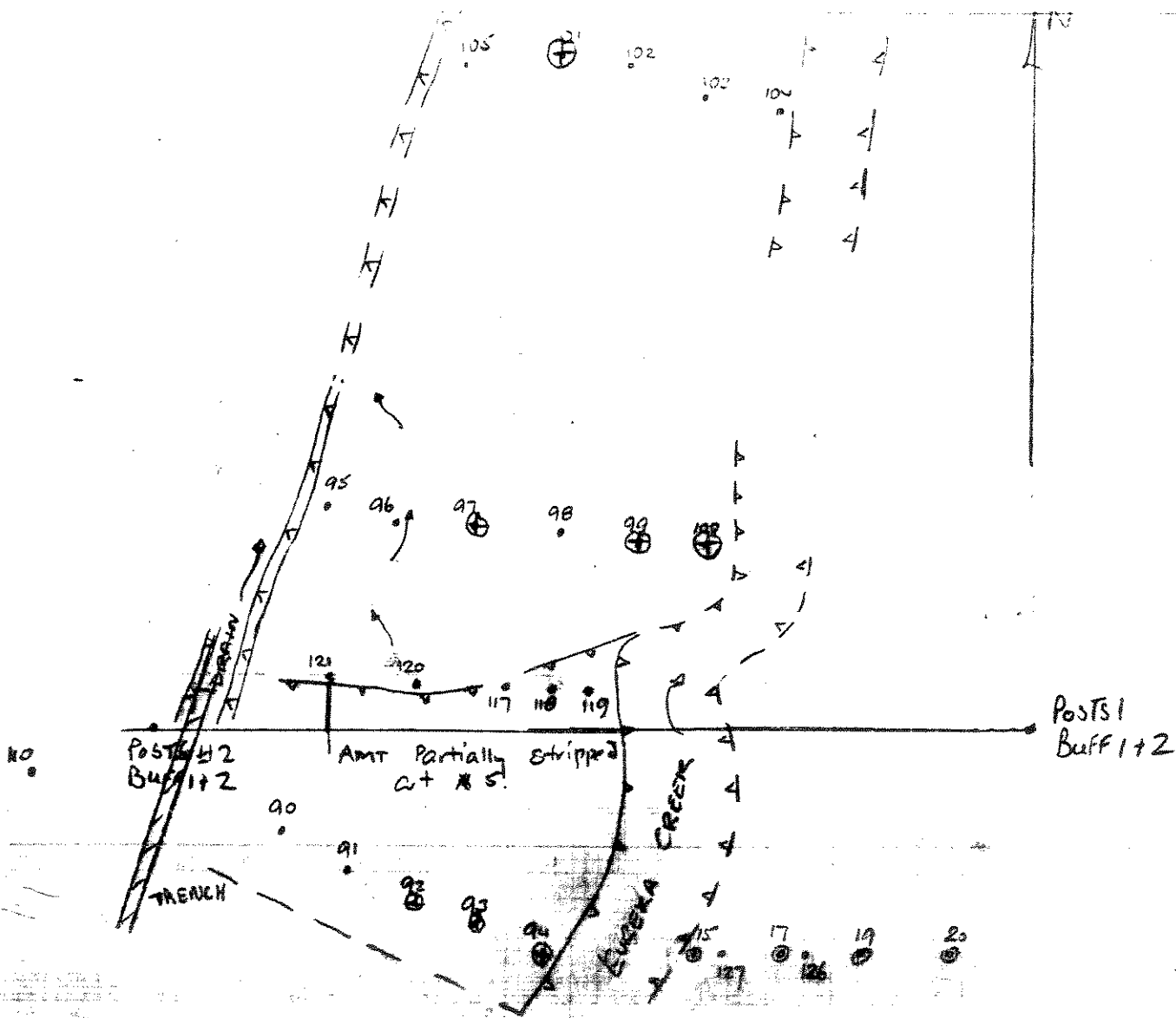
~~BACKHOLE TRENCH~~

BUFF 05 MYLONITIC QUARTZITE SCHIST
BUFF 06 WITH BISTITE

~~BACKHOLE TRENCH~~

BUFF 07 MYLONITIC QUARTZITE SCHIST





- 90. AMT 1994 AUGER DRILL HOLE
- 15 ⊙ YCCG 1940 CHURN DRILL HOLE
- ⊕ SAMPLES

LOWER EUREKA CREEK.
 RACER DRILL HOLE LOCATIONS
 ON K. DAUNT'S BUFF 1 & 2
 QUARTZ CLAIMS.

19 NOVEMBER 1994
[Signature]

Skookum Gulch Gold
Kieran Daunt

WO#27763

Sample #	-100 Au oz/ton	+100 Au oz/ton	Total Au oz/ton	DESCRIPTION
✓ 92 ✓	<0.002	<0.001	<0.002	} DRILL SAMPLES NOT DESCRIBED DUE TO FINE GRIND
✓ 93 ✓	<0.002	<0.001	<0.002	
✓ 94 ✓	<0.002	<0.001	<0.002	
✓ 97 ✓	<0.002	<0.001	<0.002	
✓ 99 ✓	<0.002	<0.001	<0.002	
✓ 100 ✓	<0.002	<0.001	<0.002	
✓ 101 ✓	<0.002	<0.001	<0.002	
✓ AURION PIT 2	<0.002	<0.001	<0.002	PYRITIZED QUARTZITE SCHIST
✓ AURION PIT #3	<0.002	<0.001	<0.002	" " "
✓ AURION PIT 5A	<0.002	<0.001	<0.002	" " "
✓ BLUFF O.E.	<0.002	<0.001	<0.002	" " "
✓ BS 001 ✓	<0.002	<0.001	<0.002	QUARTZ VEIN
✓ BS 002 ✓	<0.002	<0.001	<0.002	QUARTZ VEIN QUARTZITE CONTACT
✓ BUFF 01 ✓	0.009	0.001	0.010	" " "
✓ BUFF 02 ✓	<0.002	<0.001	<0.002	} TRENCH SAMPLES DESCRIBED IN MAP
✓ BUFF 03 ✓	<0.002	<0.001	<0.002	
✓ BUFF 04 ✓	<0.002	<0.001	<0.002	
✓ BUFF 05 ✓	<0.002	<0.001	<0.002	
✓ BUFF 06 ✓	<0.002	<0.001	<0.002	
✓ BUFF 07 ✓	<0.002	<0.001	<0.002	
✓ BUFF GANGUE ✓	<0.002	<0.001	<0.002	
✓ BUFF TRENCH 1	<0.002	<0.001	<0.002	" " "
✓ FLOAT ✓	<0.002	<0.001	<0.002	QUARTZ WITH HEMATITE
✓ GOSSAN ✓	<0.002	<0.001	<0.002	RED STAINED QUARTZITE SCHIST
✓ R 1 ✓	<0.002	<0.001	<0.002	QUARTZ VEIN BARREN LOOKING
✓ R 2 QU ✓	<0.002	<0.001	<0.002	" " "
✓ VEIN CLAIM 6	<0.002	<0.001	<0.002	QUARTZ VEIN WITH RED STAIN

Certified by

Conclusion

- Results from the assays were not encouraging. Out of 27 samples only 1 showed any Au oz/ton values. This was sample Buff 01 at 0.01 oz/ton. The method of assay (metallics fire assay) may have been the wrong approach to prospecting this area. Perhaps soil sampling would be a somewhat better method.

Because most of these samples were in situ Hard rock Those specific surface locations can be eliminated from further surface prospecting.

Because of the highly altered area prospecting should not totally finished. It should concentrate on previous spots where values were obtained. The structure at depth is as yet unknown but could be promising.

Costs

Gold Metallics Fire Assay

27 samples = \$1061.70

Prospector's Helper

\$100.00 / diem x 6 days = \$600.00

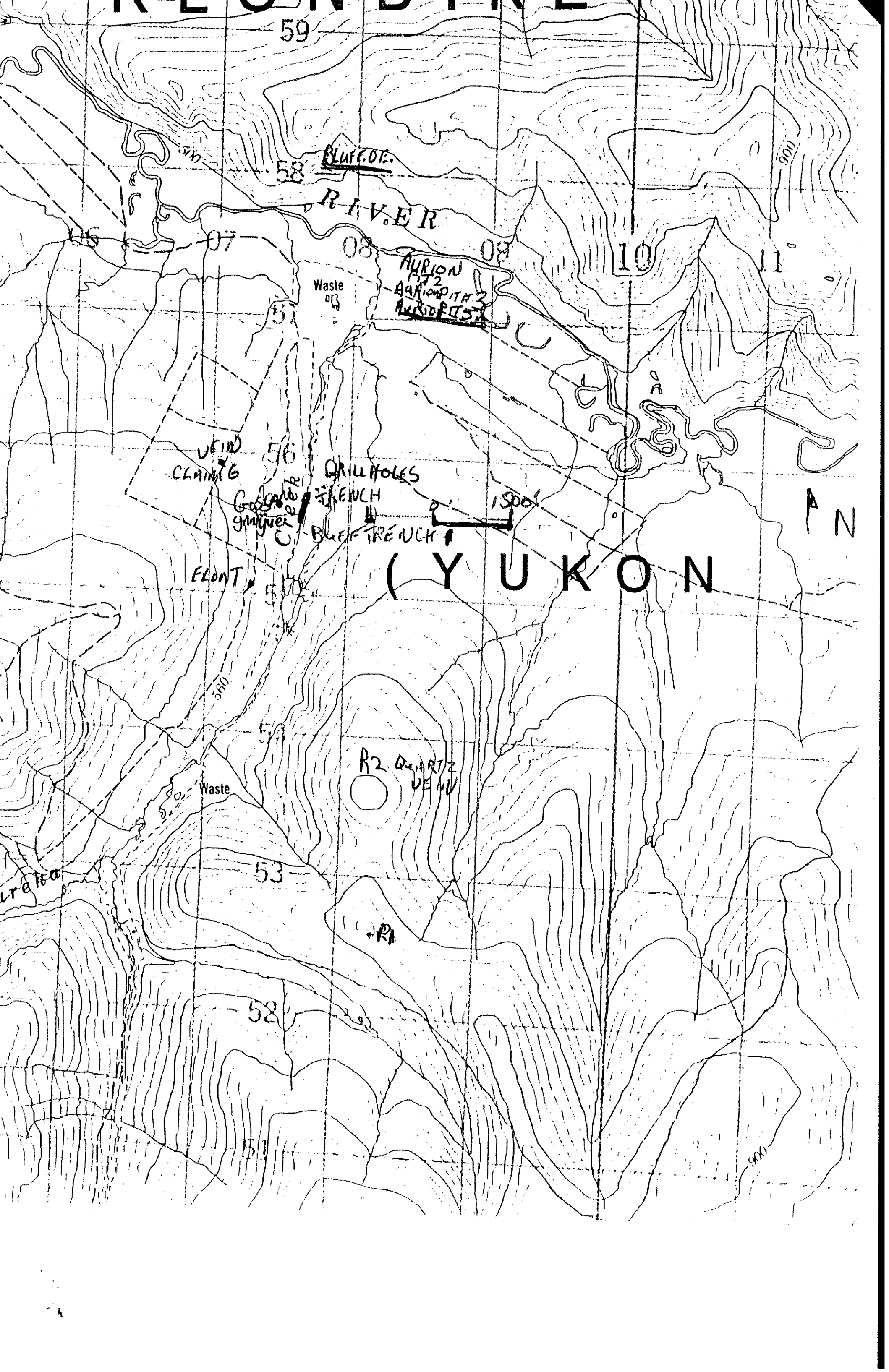
Barbara Mason

Total = \$1661.70

Kieran Daunt is a Placer Miner, Prospector and has been since 1976.

Kieran Daunt





59

BLUFF DE.

RIVER

AURION PIT 2

AURION PIT 3

VEIN CLAIM 6

DRILL HOLES

TRENCH

BLUE TRENCH

1500'

YUKON

R2 QUARTZ VEIN

53

52

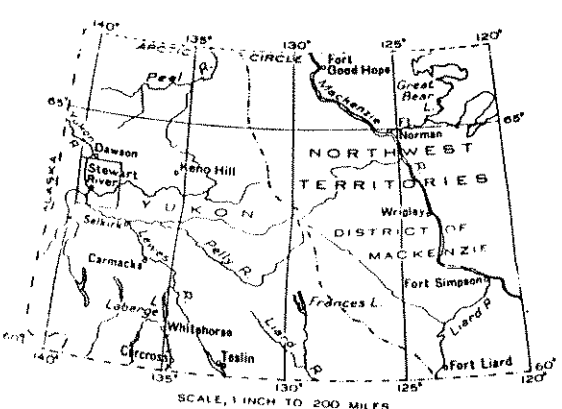
- CENOZOIC**
- TERTIARY AND MODERN**
 - 7 Stream deposits
 - SELKIRK SERIES**
 - 6 Basalt, andesite
 - TERTIARY EOCENE OR LATER**
 - 5 Granite porphyry, syenite porphyry
 - 4 Andesite, basalt, dacite, trachyte, rhyolite, breccia, tuff, agglomerate } **CARMACKS GROUP**
 - EOCENE**
 - 3 Conglomerate, sandstone, shale, coal; tuff

- PALAEZOIC MESOZOIC**
- JURASSIC OR LATER**
 - 2 Chiefly granite and granodiorite
 - ORDOVICIAN OR LATER**
 - 1 Argillite, sandstone, conglomerate

- PRECAMBRIAN AND LATER**
- A Chiefly gneissic granite
 - B Klondike schist: sericite schist, minor chlorite schist
 - C Gabbro, pyroxenite, peridotite; serpentine
 - D Limestone
 - E Gneiss, quartzite, schist, slate } **YUKON GROUP**

- Deeply drift-covered areas
- Fault
- Road and building
- Road not well travelled
- Trail
- Post Office
- Lake and stream (position approximate)
- Sand or gravel
- Contours (interval 500 feet)
- Contours (position approximate)
- Height in feet above Mean sea level. 2140'

Geology by H. S. Bostock, 1935, 1936, and 1937.
 Base-map compiled by the Topographical Survey, 1941.
 From original surveys, 1934 and 1935. Cartography by the Drafting and Reproducing Division, 1942.



093444
 Dwg 4

