

# Prospectors Report Lamp Claims



**Finlayson Lake Area**  
**Yukon Territory**  
NTS 105-G-6  
Lat: 61°21' Long: 131° 11'

Watson Lake Mining District  
January 1996  
**Andrew G. Harman**

093406

## TABLE OF CONTENTS

	Page
Summary	1
Property, Location and Access	1
Prospecting Program	5
Prospecting Program Results	5
Conclusions and Recommendations	5
List of Personnel	6
Expenditures on Program	6
 <u>List of Illustrations</u>	
Location	2
Claims Map	3
Prospecting Summary Report	4

## SUMMARY

Andrew G. Harman assisted by Dean Harman and Howard Glada prospected the Lamp claims to evaluate their mineral potential and to determine whether further exploration work and what type of further exploration work may be required. Most of the camp equipment was moved by helicopter on September 17, 1995 to a camp location on the west shore of a small north-south trending lake located near the southeast margin of the Lamp claims. Additional camp supplies and personnel were moved into the Lamp claims prospecting camp by a float mounted fixed wing aircraft based at the southeast end of Finlayson Lake on September 19, 1995. Prospecting on the Lamp claims was completed throughout the entire claims area on September 23, 1995.

During prospecting traverses all evidence of gossans and mineralization were field recorded as to their field location positions within the Lamp 1-48 claims.

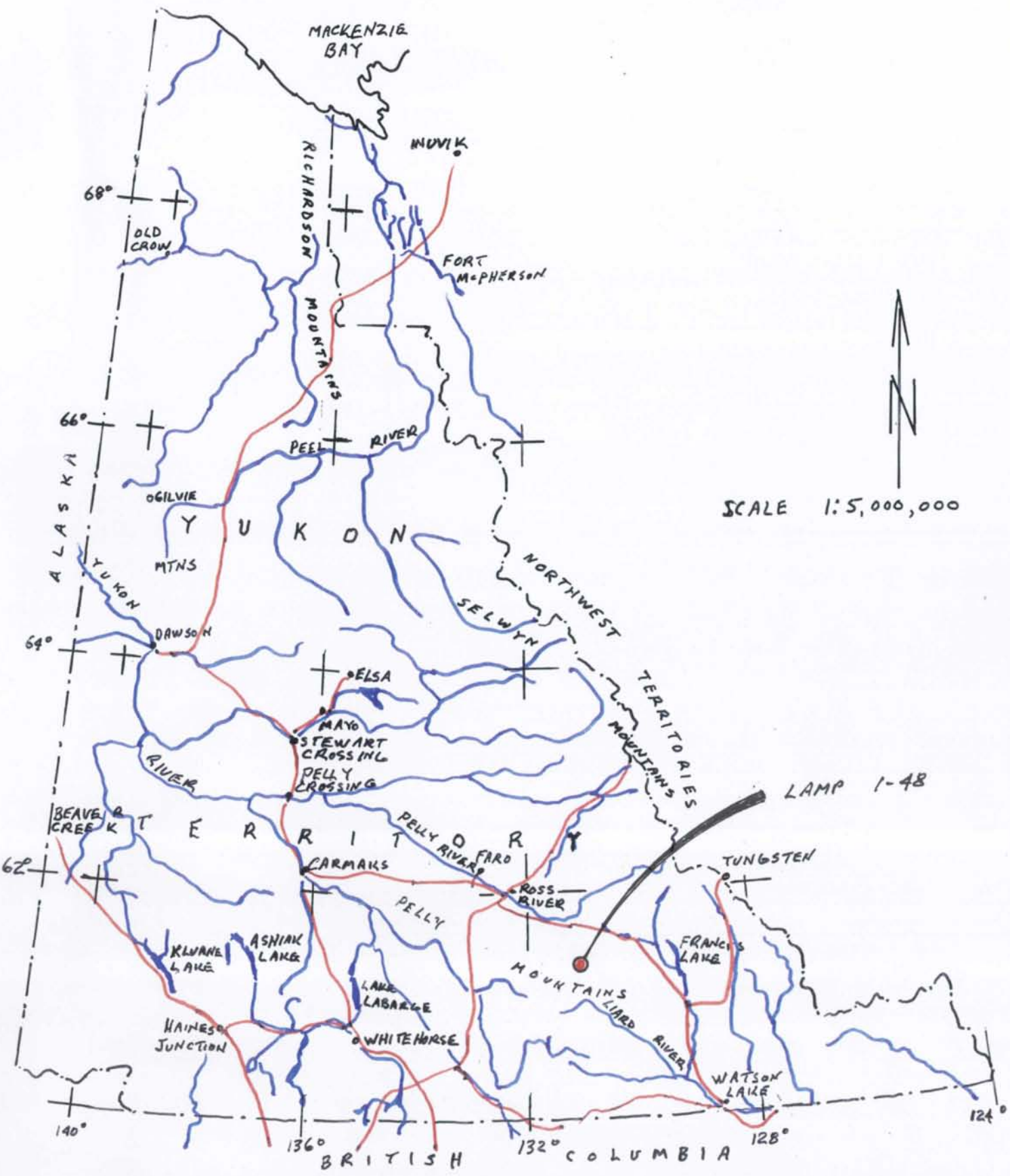
## PROPERTY LOCATION AND ACCESS

The Lamp claims are located approximately 130 kilometres southeast of the village of Ross River. The claims are located approximately 42 kilometres southwest of a float aircraft base on the southeast end of Finlayson Lake, with the approximate centre of the claim group at lat: 61° 26'N and long: 131° 11'W within map sheet 105 G/6.

<u>NAME</u>	<u>GRANT NUMBERS</u>	<u>LAPSE DATE</u>
Lamp 1-42	YB56268 - YB56315	October 3, 1996

The Lamp 1-42 claims were staked by Andrew G. Harman and were recorded in the Watson Lake Mining District.





The claims are accessible by charter helicopter aircraft based at Ross River and Watson Lake and also by charter float mounted fixed wing aircraft to a small north-south trending lake located near the southeast margin of the claims group. The Robert Campbell Highway which connects Ross River and Watson Lake and accesses the float aircraft base at the southeast end of Finlayson Lake passes approximately 30 kilometres north of the property.



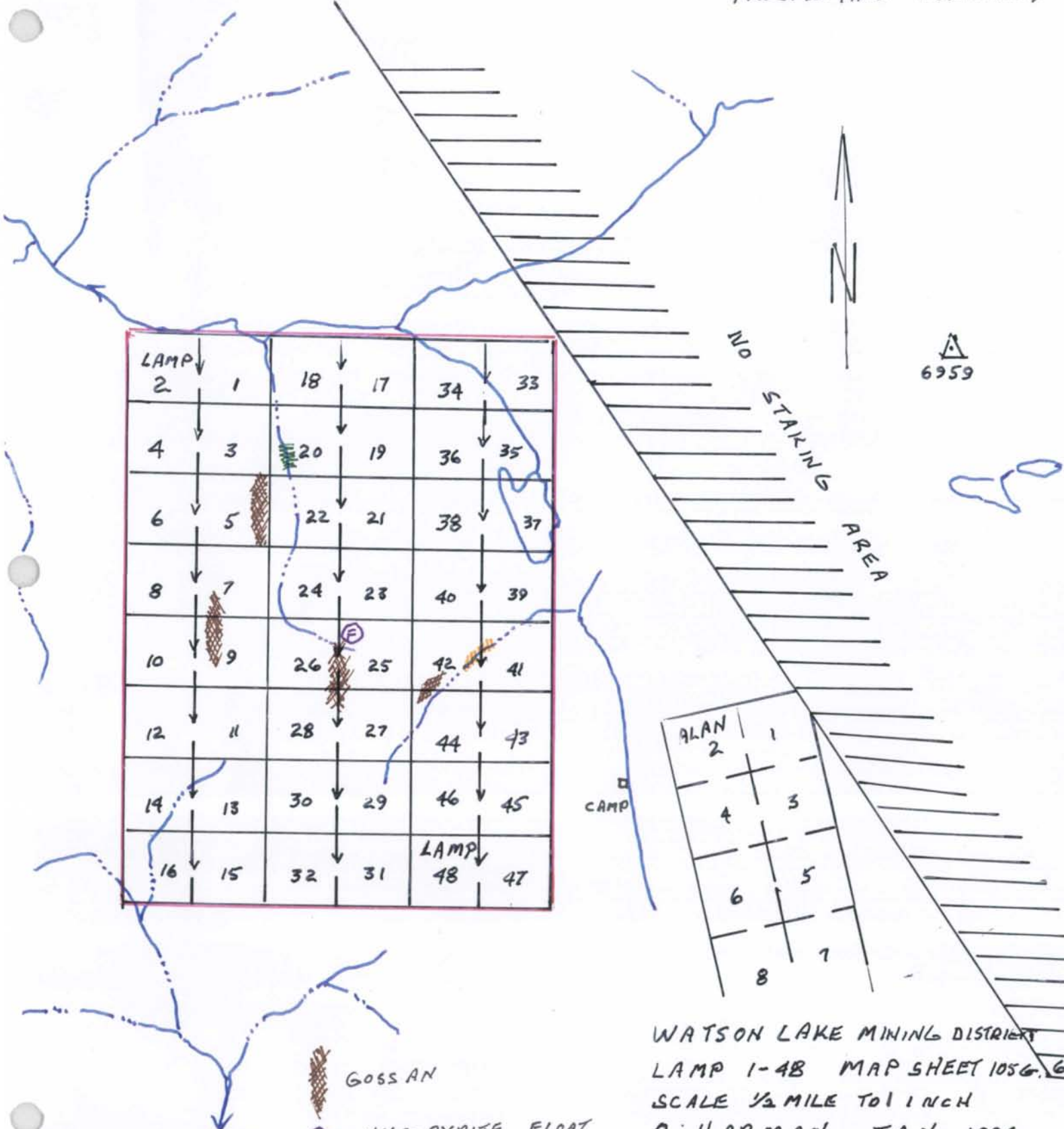
LAMP CLAIMS  
PROSPECTING SUMMARY

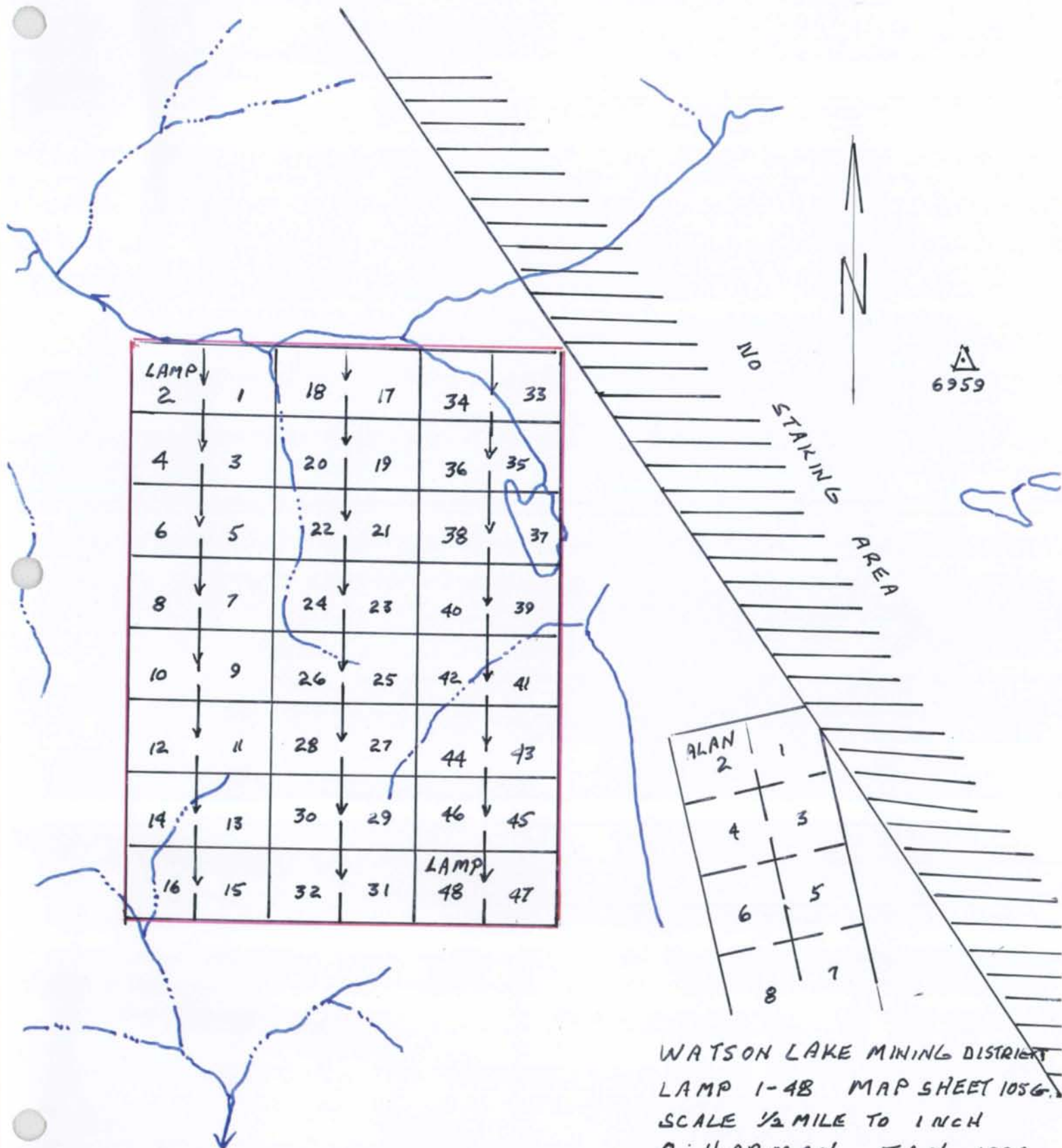
LAMP 2	1	18	17	34	33
4	3	20	19	36	35
6	5	22	21	38	37
8	7	24	23	40	39
10	9	26	25	42	41
12	11	28	27	44	43
14	13	30	29	46	45
16	15	32	31	LAMP 48	47

ALAN 2	1
4	3
6	5
8	7

-  GOSSAN
-  CHALCOPYRITE FLOAT
-  PLACER GOLD IN STREAM
-  GALENA IN STREAM SEDIMENTS

WATSON LAKE MINING DISTRICT  
LAMP 1-48 MAP SHEET 1056.6  
SCALE 1/2 MILE TO 1 INCH  
A. HARMAN JAN 1996





WATSON LAKE MINING DISTRICT  
 LAMP 1-48 MAP SHEET 1056  
 SCALE 1/2 MILE TO 1 INCH  
 A. HARMAN JAN 1996

## PROSPECTING PROGRAM

Prospecting was completed throughout the entire Lamp claims area. Bedrock prospecting was done in areas of outcrop exposure and float rock prospecting was done in creek drainage in overburden covered areas and along talus slopes. Panning stream sediments for concentrate of heavy mineral fractions was done along two streams within the claims area. All gossans and minerals encountered during prospecting traverses were noted as to their field positions within the Lamp claims. Stream sediments were concentrated for heavy mineral fraction by panning with a standard sized gold pan and heavy mineral fraction identification was done in pan concentrates with the aid of a 10x hand lens. Several hand sample specimens of gossanous chlorite schist rocks and chalcopyrite float mineralization were collected for reference purposes.

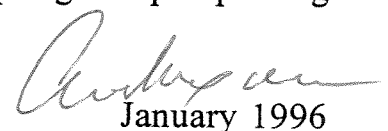
## PROSPECTING PROGRAM RESULTS

The northern part of the Lamp claims area is overburden covered with stands of scrub black spruce and willow. Float prospecting along the creek drainages encountered chlorite schists, gossanous chlorite schists, quartz vein float, gritty quartzite and serpentine rocks. In a north flowing stream as noted in the prospecting summary map included in this report, galena crystals were identified in three separate heavy fraction stream sediment pan samples taken along 150 metres of stream bed. Several surface weathered gossan zones in chlorite schists were encountered in the west central part of the claims. Siliceous chalcopyrite zone float mineralization was found proximal to a gossanous zone in the central claims area. Several heavy mineral fraction pan samples taken along 200 metres of northeasterly draining stream bed cutting serpentized rocks in the central eastern area of the Lamp claims contained several small particles of placer gold.

## CONCLUSIONS AND RECOMMENDATIONS

Prospecting on the Lamp claims identified surface weathered gossanous zones in chlorite schists, chalcopyrite float mineralization and galena crystals and fine gold particles in heavy mineral fraction stream sediments in pan concentrate samples. Gossan zones in chlorite schists along with evidence of copper float mineralization and lead and gold minerals in stream sediments suggest a good exploration potential for massive sulphide mineralization.

A detailed follow-up program of geological mapping, sampling and prospecting is recommended for the 1996 field exploration season.



January 1996

Andrew G. Harman

**Lamp 1-48 Claims Prospecting Program  
September 19 - September 23, 1995**

List of Personnel

Andrew G. Harman	#908-700 West Pender St. Vancouver, B.C. V6C 1G8
Dean Harman	2293 West 33rd Ave. Vancouver, B.C. V6M 1C1
Howard Glada	Ross River, YT Y0B 1S0

Expenditures on Program

Camp Costs	\$ 525.00
Wages	\$ 1,750.00
Aircraft Charter	<u>\$ 2,769.68</u>
Program Expenditures Total	\$ 5,044.68



January 1996


Andrew G. Harman



## MINERAL EXPLORATION EXPERIENCE

### Resume

- 1.) 30 years of mineral exploration experience in areas such as Yukon Territory, Northwest Territories, Alaska, British Columbia, California, Nevada, Arizona, Montana and Central and South America.
- 2.) Exploration experience in base metals, volcanogenic massive sulphides, placer gold, precious metals, industrial minerals, heavy rare earths, diatreme pipes, volcanogenic sulphur and copper porphyry environments.
- 3.) Have organized and managed several mineral exploration syndicates in North and South America.
- 4.) Have many years as mineral property acquisition scout in North and South America.
- 5.) Have been involved in several Yukon projects such as:
  - a.) 1965 - Did E.M. geophysical survey for Dynasty Explorations to locate discovery drill hole on the Anvil Mine.
  - b.) 1966 - Did a program of geochemical exploration and trenching on Mt. Hundere which became Se Dena Hess Mine.
  - c.) 1971 - Discovered gold in the Moosehorn Range while managing a copper exploration program for Quintana Minerals.



Andrew G. Harman