



Assessment Report  
On  
Rob # 3 Mineral Claim

NTS 105-F-10  
Latitude 61 36.68`  
Longitude 132 53.57`

By  
Bernie Kreft

This report describes work done on the Rob # 3 mineral claim, grant number YB61381. This work was carried out by the writer and one helper, on the 31st of August 1995. Bernie Kreft is the 100% owner of the aforementioned mineral claim.

The work involved the digging of 2 trenches by hand [56 cubic feet] to expose vein material, which was then sampled.

Geology - The area of the Rob # 3 mineral claim is underlain by Cambrian to Devonian grey or buff or reddish variably bedded dolomite. Mineralization consists of 2 quartz-tetrahedrite veins, one massive galena vein and disseminated galena; all of which occurs within a 2 metre wide shear zone.

Interpretation - The Rob # 21 vein is a 6cm wide quartz-galena-tetrahedrite vein which has been traced for 5m in outcrop and at least 60 metres in talus. The Rob # 22 vein consists of a 10 metre long massive galena which varies in width from 2cm to 20cm. The Rob # 23 vein is a quartz-tetrahedrite-galena vein similar to the Rob # 21 vein, except it has a lower Ag/Pb ratio. It has been traced in outcrop for 5 metres. Disseminated galena occurs within the wallrock of both the Rob # 21 and 23 veins.

Conclusions and Recommendations - The Rob # 21 vein averages approximately 380.3 oz/ton Ag and 23.4 % Pb from an area 5cm wide and 1.5 metres long. The massive galena of the Rob # 22 vein returned 126.9 oz/ton Ag and 79.7% Pb. The Rob # 23 vein averages 146 oz/ton Ag and 17.3% Pb. Disseminated galena returned 20.59 oz/ton Ag and 5.17 % Pb. All of the aforementioned mineralization occurs within a 2 metre wide shear zone. The grades and widths encountered are sufficient for a small hand-cobbing operation. The high Ag/Pb ratio in the quartz-tetrahedrite veins suggests that they could be gravity concentrated to produce a higher grade shipment. Further trenching of the known mineralization is definitely warranted.

I Bernie Kreft have worked in the mineral industry for approximately 10 years.

Personnel Involved - Bernie Kreft  
Pat Titus

#### Costs

5 Ag/Pb geochem samples x \$14.25/sample	= \$71.25
Wages for Pat Titus [one day]	= \$125.00
Wages for Bernie Kreft [one day]	= <u>\$175.00</u>
	\$371.25

### Rock Sample Descriptions

Rob # 42 - sample of the Rob # 22 massive galena vein

Rob # 43 - 1.5 metre chip sample along the Rob # 21 vein which varies from 3cm to 6cm in width

Rob # 44 - 20cm chip sample of wallrock from Rob # 21 vein

Rob # 45 - 6cm wide chip sample across Rob # 23 vein

Rob # 46 - 6cm wide chip sample across Rob # 23 vein, 1.5 metres from Rob # 45

Creek

5500

2  
FUSS  
YB70839

ROB 3  
YB61381

1  
FUSS  
YB70838

4	2
PETE	PETE
YB59281	YB59279
5	3
PETE	
YB59282	YB59280

1  
PETE  
YB59278

N  
105-F-10

13  
BRO  
YB56465

18  
17

28  
YB56475

27  
YB56476

6000

2  
ROB  
YB61380

6000

113
MPR
YB00737
115
MPR
YB00739

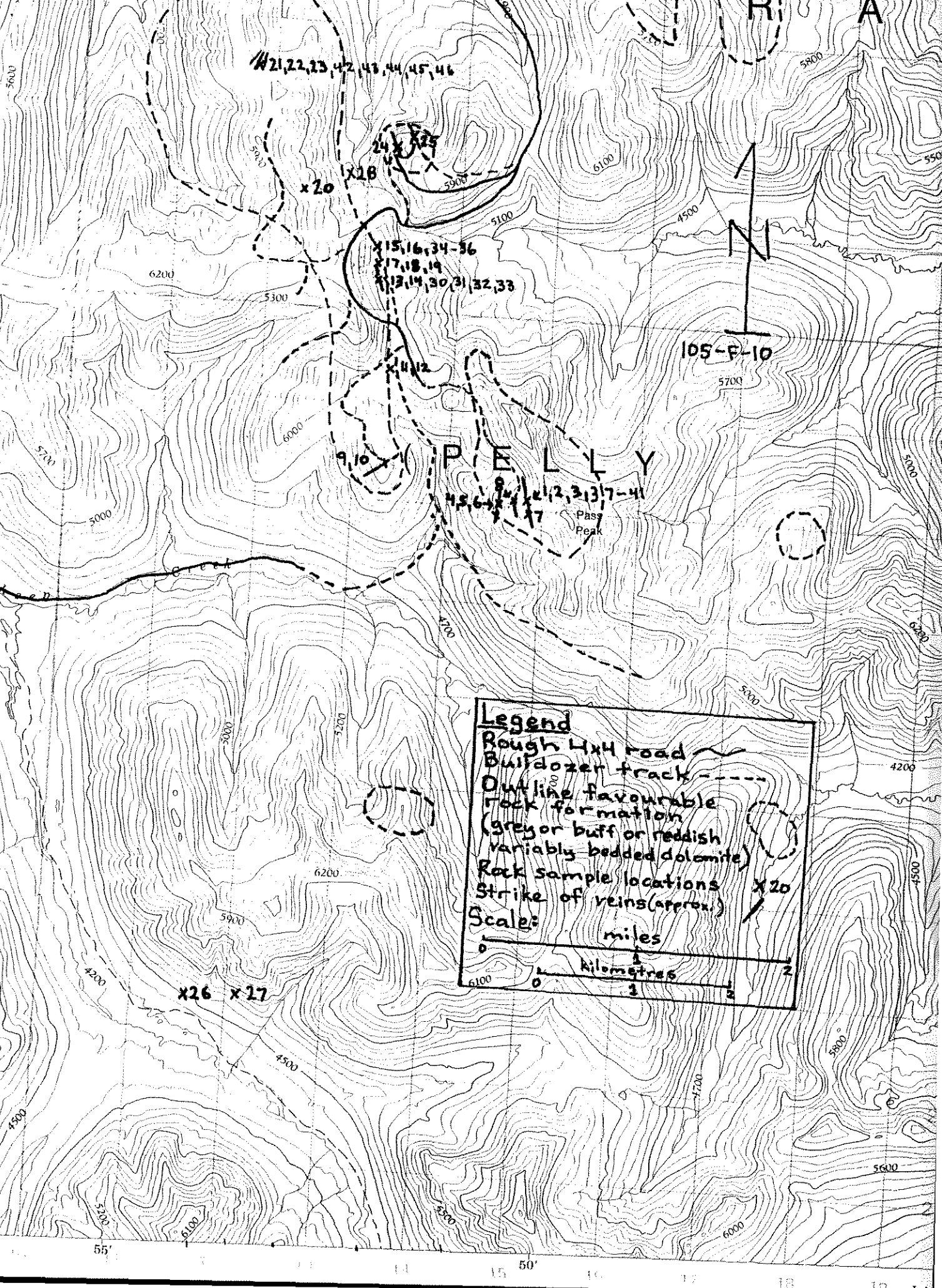
(PELLEY

1  
ROB  
YB60943

PASS  
PEAK

5500

Creek



X21, 22, 23, 42, 43, 44, 45, 46

X24, X25

X20, X18

X15, 16, 34-36

X17, 18, 19  
X13, 14, 30, 31, 32, 33

X41, 42

X9, 10

PELLEY  
X4, 5, 6, 7, 8, 11, 12, 13, 17-41

Pass Peak

105-F-10

X26, X27

**Legend**

- Rough 4x4 road
- Bulldozer track
- Outline favourable rock formation (grey or buff or reddish variably bedded dolomite)
- Rock sample locations X20
- Strike of veins (approx.)

Scale:

miles

kilometres



09/95

Assay Certificate

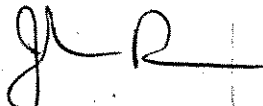
Page 1

Bernie Kreft

WO#15377

Sample #	Ag oz/ton	Pb %
ROB 30	119.00	48.40
ROB 31	116.40	44.30
ROB 32	191.30	61.30
ROB 33	300.70	39.70
ROB 37	48.76	65.30
ROB 38	72.91	69.80
ROB 39	67.78	73.70
ROB 40	37.27	48.30
ROB 41	49.26	61.40
ROB 42	126.90	79.70
ROB 43	380.30	23.40
ROB 44	20.59	5.17
ROB 45	148.20	18.00
ROB 46	144.40	16.70
ROB 47	101.50	28.30
ROB 48	42.08	48.20
ROB 49	13.79	4.74
ROB 50	4.03	2.40
ROB 51	6.41	10.90

Certified by



Bernie Kraft

signature to accompany assessment  
reports on Rob #1, Rob #2 and Rob #3  
mineral claims.