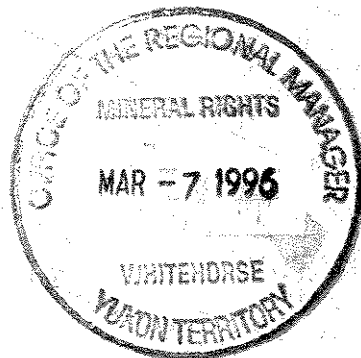


Assessment Report
On
Rob # 2 Mineral Claim

NTS 105-F-10
Latitude 61 35.57'
Longitude 132 52.09'

By
Bernie Kreft



This report describes work done on the Rob # 2 mineral claim, grant number YB61380. This work was carried out by the writer and one helper, on the 30th of August 1995. Bernie Kreft is the 100% owner of the aforementioned mineral claim.

The work involved the digging of 1 trenches by hand [60 cubic feet] to expose vein material, which was then sampled.

Geology - The area of the Rob # 2 mineral claim is underlain by Cambrian to Devonian grey or buff or reddish variably bedded dolomite. Mineralization consists of 2 semi-massive galena-tetrahedrite veins. These veins strike N.N.W. and are approximately 5cm wide. The main vein [Rob # 14] was traced for 14 feet. Just north of the Rob # 14 vein are several parallel N.E. trending shear zones cutting dolomite. These shears were sampled, with one averaging 1 to 2 g/t Au.

Interpretation - The Rob # 14 vein is exposed on surface for a length of 14 feet and a width of 5cm. The Rob # 14 vein averages 181 oz/ton Ag and 48% Pb for a silver to lead ratio of 3.75 to 1.00.

Conclusions and Recommendations - The Rob # 14 vein has an average grade suitable for hand mining. The width of the exposed portion of the Rob # 14 vein makes it unsuitable for hand mining. The shear-hosted gold mineralization discovered is sub-economic. Although both the gold and silver/lead mineralization is uneconomic, trenching to find wider or higher grade extensions is definitely warranted as both occurrences are new.

I Bernie Kreft have worked in the mineral industry for approximately 10 years.

Personnel Involved - Bernie Kreft
Pat Titus

Costs

3 Au/ICP analysis x 19.75/sample	= \$59.25
5 Ag/Pb geochem samples x \$14.25/sample	= \$71.25
Wages for Pat Titus [one day]	= \$125.00
Wages for Bernie Kreft [one day]	= <u>\$175.00</u>
	\$430.50

Rock Sample Descriptions

Rob # 30 - 4cm chip sample of galena from Rob # 14 vein

Rob # 31 - 6cm chip sample of galena from Rob # 14 vein, 1.3 metres to the south of Rob # 30

Rob # 32 - 6cm chip sample of galena from Rob # 14 vein, 1.3 metres to the south of Rob # 31

Rob # 33 - 3 cm chip across Rob # 14 vein 1.3 metres south of Rob # 32

Rob # 34 - 2.2 metre chip sample across sheared and brecciated dolomite healed with quartz

Rob # 35 - 0.8 metre chip sample across zone similar to Rob # 34, 45 metres to the southwest

Rob # 36 - grab sample of a highly altered and brecciated white quartz-rich rock

YB56192

Creek

5500

2
FUSS
YB70839

ROB 3
YB61384

1
FUSS
YB70838

4	PETE	2
YB59281	YB59279	
5	PETE	3
YB59282	YB59280	

PETE
YB59278

105-F-10

5500

6000

ROB 2
YB61380

6000

113	MPR
YB00737	
115	MPR
YB00739	

(PELLEY

ROB
YB60943

PASS
PEAK

5500

5000

Creek

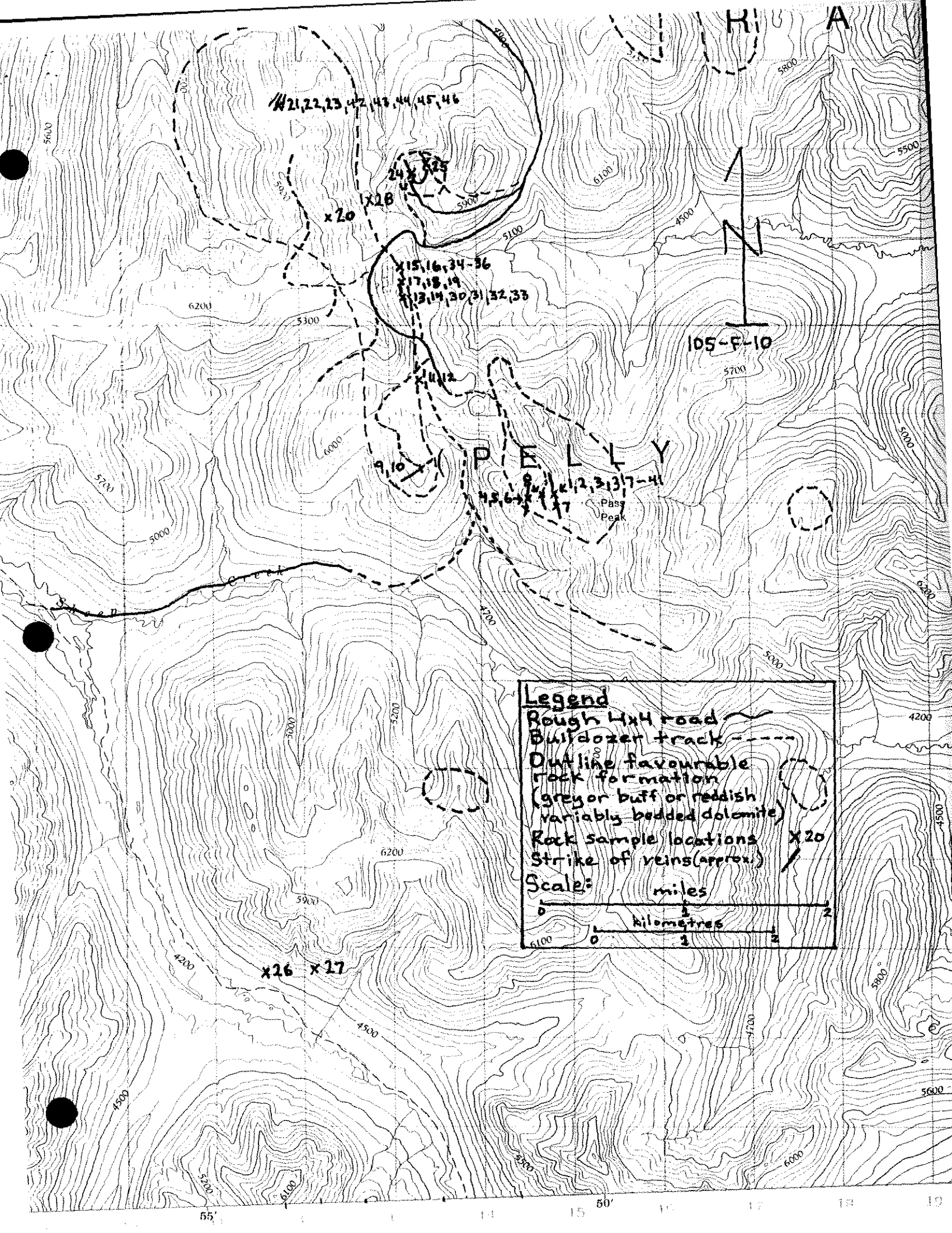
43
BRO
YB56193

18
YB56465
17

28
YB56475
27

YB56475
27
YB56476

4500



W21, 22, 23, 42, 43, 44, 45, 46

x24 x25

x20 x28

x15, 16, 34-36
x17, 18, 19
x13, 14, 30, 31, 32, 33

x11, 12

P E L L Y
x1, 2, 3, 37-41
x4, 5, 6, 7, 8, 9, 10, 11, 12, 13, 14, 15, 16, 17

Pass Peak

x26 x27

Legend

- Rough 4x4 road
- Bulldozer track
- Outline favourable rock formation (grey or buff or reddish variably bedded dolomite)
- Rock sample locations
- Strike of veins (approx.)

Scales: miles

kilometres

105-F-10



13/09/95

Assay Certificate

Page 1

Hemlo Gold Mines

WO#15376

re: Bernie Kreft

Sample #

Au ppb

Sample #	Au ppb	
ROB 34	2375	2.2m chip brecciated (Sheared dolomite)
ROB 35	328	0.8m "
ROB 36	59	

Certified by



3/09/95

Assay Certificate

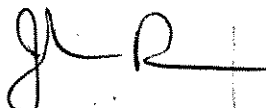
Page 1

Bernie Kreft

WO#15377

Sample #	Ag oz/ton	Pb %
ROB 30	119.00	48.40
ROB 31	116.40	44.30
ROB 32	191.30	61.30
ROB 33	300.70	39.70
ROB 37	48.76	65.30
ROB 38	72.91	69.80
ROB 39	67.78	73.70
ROB 40	37.27	48.30
ROB 41	49.26	61.40
ROB 42	126.90	79.70
ROB 43	380.30	23.40
ROB 44	20.59	5.17
ROB 45	148.20	18.00
ROB 46	144.40	16.70
ROB 47	101.50	28.30
ROB 48	42.08	48.20
ROB 49	13.79	4.74
ROB 50	4.03	2.40
ROB 51	6.41	10.90

Certified by



Bernie Kraft

signature to accompany assessment reports on Rob #1, Rob #2 and Rob #3 mineral claims.