

093395



Assessment Report
 On
 Rob # 1 Mineral Claim

NTS 105-F-10
 Latitude 61 34.14'
 Longitude 132 50.39'

By
 Bernie Kreft



[Faint, illegible handwritten notes and stamps at the bottom of the page]

This report describes work done on the Rob # 1 mineral claim, grant number YB60943. This work was carried out by the writer and one helper, on the 28th of August 1995. Bernie Kreft is the 100% owner of the aforementioned mineral claim.

The work involved the digging of 13 trenches by hand [48.75 cubic feet] to expose vein material, which was then sampled.

Geology - The area of the Rob # 1 mineral claim is underlain by Cambrian to Devonian grey or buff or reddish variably bedded dolomite. Mineralization consists of at least 4 massive galena-tetrahedrite veins. These veins strike N.N.W. and vary in width from 10 to 40 cm. The most consistent vein [Rob # 1] has been traced for 41 metres on surface, with an average width of 15cm.

Interpretation - The Rob # 1 vein is exposed on surface for a length of 135 feet and a width of 0.5 feet. The Rob # 1 vein averages 69.5 oz/ton Ag and 69.4% Pb for a silver to lead ratio of approximately 1 to 1.

Conclusions and Recommendations - The Rob # 1 vein contains 8.5 tons of ore per vertical foot. With current silver and lead prices [\$7.60 oz/Ag and \$0.45 lb/Pb] this vein does not appear to be of economic interest. Further exploration in the immediate area is warranted, and should be directed towards finding similar veins, but with higher grades.

I Bernie Kreft have worked in the mineral industry for approximately 10 years.

Personnel Involved - Bernie Kreft
Pat Titus

Costs

13 Ag/Pb geochem samples x \$14.25/sample	= \$185.25
Wages for Pat Titus [one day]	= \$125.00
Wages for Bernie Kreft [one day]	= <u>\$175.00</u>
	\$485.25

Rock Sample Descriptions

Rob # 1 - 4cm wide limonite coated fine-grained galena vein

Rob # 2 - 15cm wide massive fine-grained galena vein with malachite and azurite; 10 metres up hill and along same structure as Rob # 1

Rob # 3 - 20cm wide massive fine-grained galena vein 75 metres up hill and along same structure as Rob # 1

Rob # 4 - 12cm vein of massive coarse-grained galena

Rob # 5 - 12cm wide massive fine-grained galena vein

Rob # 6 - 6cm wide coarse-grained galena vein

Rob # 7 - 6cm wide limonite rich zone with approx. 30% galena

Rob # 8 - 8cm wide limonitic zone with around 45% galena

Rob # 37 - 10cm chip across galena-limonite vein

Rob # 38 - 15cm chip across galena with azurite

Rob # 39 - 18cm chip across galena with azurite and malachite

Rob # 40 - 15cm chip across galena-limonite vein

Rob # 41 - 15cm chip across galena-limonite vein

YB56192 YB56193

Creek

5500

43
BRO
YB56194

2
FUSS
YB70839

ROB 3
YB61364

1
FUSS
YB70838

18
YB56465
17

28
YB56475
27



105-F-10

4	PETE	2	1
YB59281	YB59279	YB59278	
5	PETE	3	
YB59282	YB59280		

5500

6000

ROB 2
YB61380

4500

113	MPR
YB00737	
115	MPR
YB00739	

(PELLEY

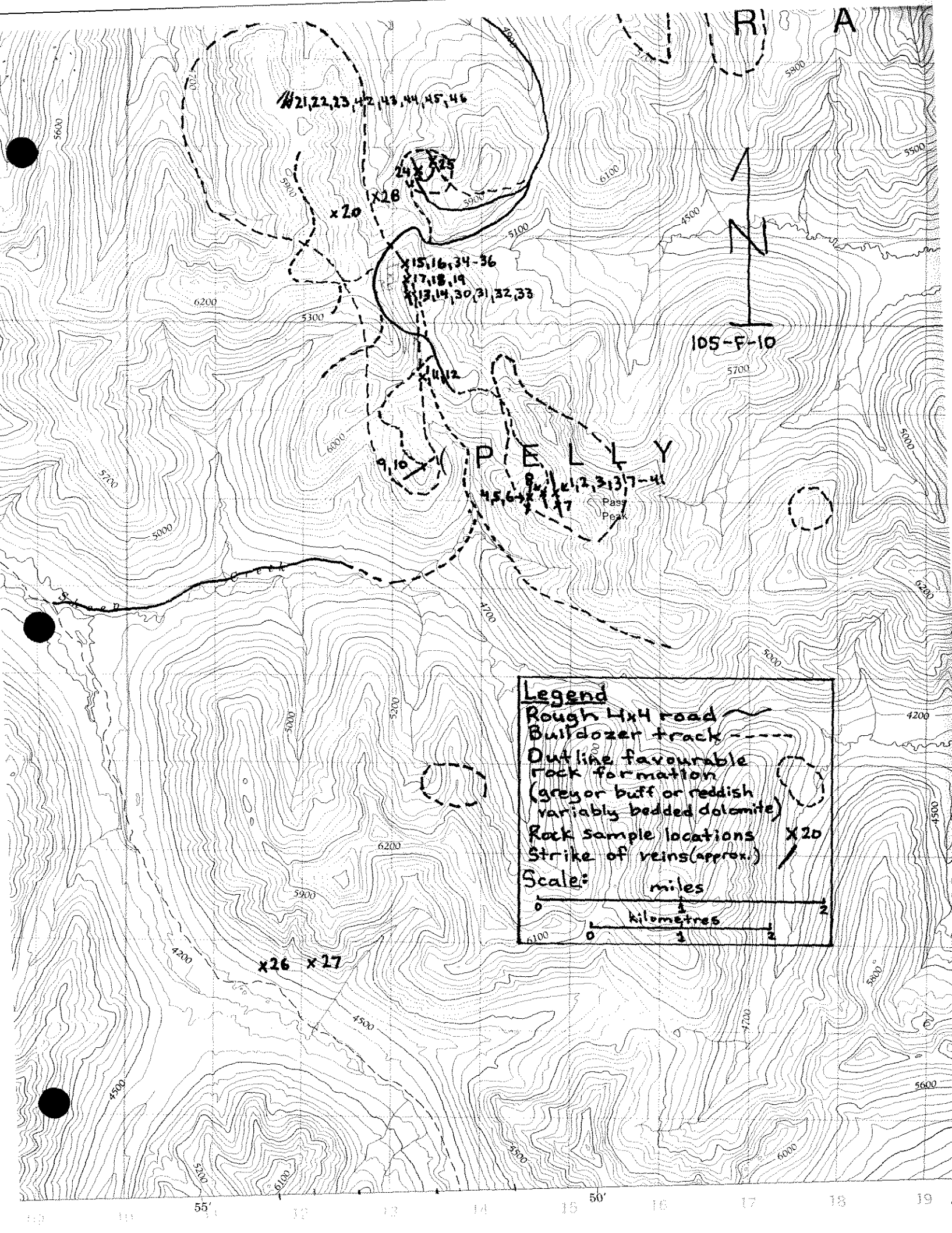
1
ROB
YB6043

PASS
PEAK

5500

5000

Creek



X21, 22, 23, 42, 43, 44, 45, 46

X24, 25

X20

X28

X15, 16, 34-36

X17, 18, 19

X13, 14, 30, 31, 32, 33

X11, 12

X9, 10

PELLEY

X4, 5, 6, 7, 8, 11, 12, 13, 17-19

Pass Peak

X26 X27

8/09/95

Assay Certificate

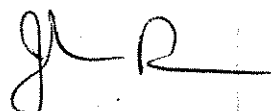
Page 1

Bernie Kreft

WO#15377

Sample #	Ag oz/ton	Pb %
ROB 30	119.00	48.40
ROB 31	116.40	44.30
ROB 32	191.30	61.30
ROB 33	300.70	39.70
ROB 37	48.76	65.30
ROB 38	72.91	69.80
ROB 39	67.78	73.70
ROB 40	37.27	48.30
ROB 41	49.26	61.40
ROB 42	126.90	79.70
ROB 43	380.30	23.40
ROB 44	20.59	5.17
ROB 45	148.20	18.00
ROB 46	144.40	16.70
ROB 47	101.50	28.30
ROB 48	42.08	48.20
ROB 49	13.79	4.74
ROB 50	4.03	2.40
ROB 51	6.41	10.90

Certified by



30/08/95

Assay Certificate

Page 1

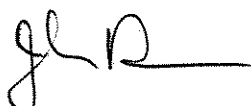
Bernie Kreft

WO#15306

Sample #	Au oz/t	Ag oz/t	Pb %
Rob 1	0.003	26.4	17.6
Rob 2	0.001	96.2	77.1
Rob 3	0.002	77.8	79.1
Rob 4	0.001	71.9	81.8
Rob 5	0.001	56.5	80.8
Rob 6	0.002	23.3	30.7
Rob 7	0.004	15.6	34.4
Rob 8	0.001	65.4	75.7
Rob 9	0.003	42.9	65.6
Rob 10	0.001	65.6	76.3
Rob 13	0.004	138.3	57.0
Rob 14	0.010	142.1	44.1
Rob 20	0.002	41.0	47.1
Rob 21	0.001	528.5	28.4
Rob 22	0.001	131.5	77.9
Rob 23	0.005	130.5	57.4
Rob 24	0.002	164.9	67.9
Rob 25	0.004	52.8	66.6
Rob 28	0.001	17.8	46.6

Note: Bold type indicates Ag analysed by fire assay. All other Ag analyses were done by AAS.

Certified by




Bennie Kraft

signature to accompany assessment
reports on Rob #1, Rob #2 and Rob #3
mineral claims.