

A REPORT ON RECONNAISSANCE GEOLOGY-  
PHYSICAL WORK ON CONE MT. MINES, LTD &  
YUCOL MINES, LTD., B.C.-YUKON AREAS FOR

*Sandy claims*

1974

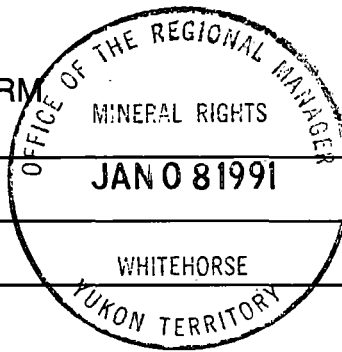
105-B-2

Y42948

092897



TRANSMITTAL FORM



M.R. file no.
R.M.M.R. file no.
Date forwarded 03 JAN 1991

From Mining Recorder at: WATSON LAKE

To Regional Manager, Mineral Rights at Whitehorse, Y.T.

For action are:

☐ NEW APPLICATION FOR PLACER LEASE TO PROSPECT

Name

☐ RENEWAL APPLICATION PLACER LEASE TO PROSPECT

Name

Lease no.

☐ AFFIDAVIT OF EXPENDITURE ON PLACER LEASE

Name

Lease no.

☐ SECURITY DEPOSIT

☐ FINANCIAL ABILITY

☐ ASSIGNMENT OF PLACER LEASE NO.

From

To

☐ GROUPING APPLICATION  
UNDER SEC. 52(2) PLACER MINING ACT.

Owner

☐ DIAMOND DRILL LOGS

Claims

Claim sheet no.

☒ QUARTZ ASSESSMENT REPORT

Claims

Claim sheet no.

Luck 7-12, 15, 17, 19, 21 SANDY 1, 9-22, 24

105-B-02.

Type of report

Cone Mt. Mines + Yukon Mines Ltd.

Submitted by

Geological

Cls. work performed on

\$ req. for ren. application

For Numbering Only  
Please return this  
copy

Signature

REPLY ACTION

Date returned

092897

Signature

## CONTENTS



INTRODUCTION	PAGE 1
LOCATION AND ACCESS	1
PHYSIOGRAPHY	2
PROPERTY	2
GEOLOGY AND MINERALIZATION of BRITISH COLUMBIA PORTIONS	3
TRENCHING IN THE YUKON PORTIONS	5
STATEMENT OF QUALIFICATIONS	7
ILLUSTRATIONS :	

B.C. LOCATION MAP - SHHET 104-0  
YUKON LOCATION MAP - SHEET 105B  
GEOLOGICAL-PHYSICAL WORK MAP, CONE MT. MINES, LTD  
GEOLOGICAL-PHYSICAL WORK MAP, YUCOL MINES, LTD.

092897

A Report on the Reconnaissance Geology of Luck-Cone Claims and Sandy Claims in Liard Mining Division, B.C. and on Trenching Work done in Luck and Sandy Claims within Watson Lake Mining Division, Yukon belonging to Cone Mountain Mines, Ltd. and Yucol Mines, Ltd. for the year 1974.

## INTRODUCTION

During the period June 28 to July 17, the writer accompanied by Garth Alley undertook the reconnaissance geology of two groups of mineral claims in Liard Mining Division, B.C. and carried out some trenching work on the other adjoining groups of claims in Watson Lake Mining Division, Yukon, belonging to Cone Mountain Mines, Ltd., and Yucol Mines, Ltd. A D-7 caterpillar operated by Ray Rule of Stewart Construction was used in trenching.

This report consolidates information derived from the field-work accomplished during the writer's sojourn in the bordering area of B.C. and Yukon covered by the groups of claims under assessment belonging to Cone Mountain Mines, Ltd. and Yucol Mines, Ltd.

## LOCATION and ACCESS

Cone Mountain Mines, Ltd. Luck-Cone claim group is situated on the northeastern part of Tootsee Ridge bordering areas of Yukon and British Columbia, at approximately  $59^{\circ} 59'$  to  $60^{\circ} 01'$  North Latitude, and  $130^{\circ} 26'$  to  $130^{\circ} 29'$  West Longitude. The property is accessible by a 7-mile dirt road which connects at Mile 706 on the Alaska Highway, extends south on the east side of Freer Creek.



The Sandy claims of Yucol Mines, Ltd. are situated in the northern part of the Tootsee Ridge area, 2 miles to the west of Cone Mountain Mines' property, likewise covering the bordering portions of Yukon and British Columbia at approximately 59 59' to 60 01' North Latitude and 130 32' to 130 33 1/3' West Longitude. Access to the claims is by a 6½ mile dirt road which forks to the southwest from a point 1½ miles on the road which connects at Mile 706 on the Alaska Highway, and following the west side of Freer Creek to the south.

#### PHYSIOGRAPHY

Both properties occupy a U-shaped valley which ends up in a cirque and its adjoining ridges having elevations of 4,500 feet and 6,500 feet respectively. The ridges are steepwalled, barren of vegetation, and flanked by talus of quartz monzonite rocks at the base. Large and small boulders of country rock embedded in alluvial material cover the valley where alpine hedges and small conifers thrive.

#### PROPERTY

As of date, the properties of Cone Mountain Mines, Ltd. and Yucol Mines, Ltd. are briefly stated and outlined below.

For Cone Mountain Mines Ltd. 20 contiguous claims are retained, 10 of which are in the Yukon and the other 10 are in British Columbia. Metal tags were affixed to posts in Luck claims on both areas. These are given as follows:

NAME	LOCATION	RECORD #	EXPIRY DATES
Luck 7-12	Watson Lake M.D. Yukon	Y29466-Y29471	Sept 12/74
Luck 15	Watson Lake M.D. Yukon	Y29474	Sept 12/74
Luck 17	Watson Lake M.D. Yukon	Y29476	Sept 12/74
Luck 19	Watson Lake M.D. Yukon	Y29478	Sept 12/74
Luck 21	Watson Lake M.D. Yukon	Y29480	Sept 12/74
Luck 25-28	Liard M.D. B.C.	39700-39703	Sept 5/74
Cone 1-6	Liard M.D. B.C.	50770-50775	July 24/75

Eight (8) claims were dropped, 6 in Watson Lake Mining Division, Yukon which include Luck 13, 14, 16, 18, 20 & 22; while 2 were dropped in Liard Mining Division, B.C. including Luck 2 and 4.

For Yucol Mines, Ltd. the current mineral claims are given as follows:

NAME	LOCATION	RECORD #	EXPIRY DATES
Sandy 1	Watson Lake M.D. Yukon	Y42948	Aug 31/74
Sandy 9-22	Watson Lake M.D. Yukon	Y42957-42970	Aug 31/74
Sandy 24	Watson Lake M.D. Yukon	Y42972	Aug 31/74
Sandy 25-26	Liard M.D. B.C.	48571-48572	Sept 5/74
Sandy 27	Liard M.D. B.C.	48573	Sept 5/75
Sandy 28-29	Liard M.D. B.C.	48574-48575	Sept 5/74
Sandy 31	Liard M.D. B.C.	48577	Sept 5/74
Sandy 33	Liard M.D. B.C.	48579	Sept 5/74
Sandy 35-38	Liard M.D. B.C.	48581-48584	Sept 5/75
Sandy 39-40	Liard M.D. B.C.	48585-48586	Sept 5/74
Sandy 41-42	Liard M.D. B.C.	48587-48588	Sept 5/75
Sandy 43-44	Liard M.D. B.C.	48589-48590	Sept 5/74

Eleven(11) claims were dropped including 8 claims in Watson Lake Mining Division, Yukon(Sandy 2-8 and 23) and 3 claims in Liard Mining Division, B.C. were also dropped(Sandy 30, 32 and 34). Metal tags were also affixed to posts in all Sandy claims on both sides of the boundary line.

#### GEOLOGY and MINERALIZATION of BRITISH COLUMBIA PORTIONS

The geology and mineralization of Luck claims 25-28 and Cone 1-6 belonging to Cone Mt. Mines, Ltd. and that of Sandy 25-29, 31, 33 and 35-44 belonging to Yucol Mines, Ltd. will be described briefly under one heading, as they all occur in the same general area within Liard Mining Division, B.C., and having similar geological setting.

Properties in the B.C. portion of the claims of the two companies referred to above are underlain by a biotite quartz monzonite of the Cassiar Batholith. The monzonite is grey, massive, homogeneous, predominant ferromagnesian mineral. The rocks are relatively fresh with slight sericitic alteration affecting the plagioclase feldspar, and biotite in places partially replaced by chlorite. Age of the monzonite is Mid-Cretaceous.

The biotite quartz monzonite in the area covered by the two groups of claims in question is closely jointed along northeast-southwest and northwest-southeast directions with strong horizontal partings, and exhibit east-west and north-south fracture pattern.

Mineral showings are quite sparse in the British Columbia properties of both Cone Mountain Mines, Ltd. and Yucol Mines, Ltd. At Cone Mountain Mines, Ltd. Luck group of claims, only one mineral showing had been reported (Zone-5) near the common boundary line of Luck 25 and 27. The showing consists of floats of very fine massive galena in the scree of sand, gravel and boulders of biotite quartz monzonite on the east flank of the valley near the head of Freer Creek first east branch at elevation of approximately 5,500 feet. Last year trenching had not reached bedrock so that the spatial and structural relationships of the mineral showing are unknown.

At Yucol Mines, Ltd. Sandy claims, two quartz-galena veins, one upper and the other lower, occupy parts of the sheeted zones that cut biotite quartz monzonite just south of B.C.-Yukon boundary at the headwaters of west branch of Freer Creek. The sheeted zones are 4 feet to 6 feet wide, but lenticular veins of quartz-galena matter are irregularly developed in them with thicknesses ranging from a fraction of an inch to 6 inches. The upper vein strikes N 35 E dipping vertically occur near the crest of a ridge to the south where it was exposed over a width of 6 feet and a length of 10 feet. The lower vein is at 5,000 feet of elevation, strikes N 65 - 70 E and dips 80 S and has been exposed by trenching over a width of 4 feet and a length of 150 feet. Recent trenching carried out on the north-easterly extension of the lower vein in the Yukon side show weakening in depth. Sericitic alteration was noted to be confined within the sheeted zones.

TRENCHING WORK in the YUKON PORTIONS

To further expose the showings and test one of the geochemical anomalies yielded in previous surveys, trenching has been carried out in Cone Mountain Mines, Ltd., and Yucol Mines, Ltd., mineral claims in the Yukon side of the B.C.-Yukon border. The trenches are numbered and plotted in their proper locations on the accompanying Geological-Physical Work maps of Cone Mountain Mines, Ltd., and Yucol Mines, Ltd. Their respective symbols are identified in the "Legend".

In the showings, the rocks trenched are highly jointed, horizontally sheeted and loosen somewhat by weathering along fracture planes; whereas, in the valleys where geochemical anomalies lie, the trenches are on alluvial deposits admixed with well-rounded boulders of quartz monzonite rocks.

Trenching done at Cone Mountain Mines, Ltd. in 1974 are enumerated as follows:

<u>TRENCH #</u>	<u>CLAIM LOCATION</u>	<u>DIMENSIONS</u>	<u>CUBIC YARDS</u>
T1	Luck 17	100'X20'X3'	222
T2	" "	"	222
T3	" "	"	222
T4	" "	"	222
T5	" "	"	222
T6	" "	"	222
T7	Luck 12	"	222
TOTAL			<u>1,554</u>

At Yucol Mines, Ltd., 1974 trenching is given as follows:

TRENCH#	CLAIM LOCATION	DIMENSIONS	CUBIC YARDS
T 1	Sandy 16	150 'X15 'X10 '	833
T 2	" "	120 'X15 'X3 "	200
T 3	" "	125 'X15 'X3 '	208
T 4	" "	100 'X10 'X3 '	111
T 5	" "	120 'X10 'X3 '	133
T 6	Sandy 20	150 'X30 'X5 '	833
TOTAL			2,318

August 1, 1974

Respectfully submitted,

*Daniel M. Basco*  
 Daniel M. Basco,  
 Geologist.



STATEMENT OF QUALIFICATIONS

Name: BASCO , Daniel M.

Profession: Geologist

Education: B.Sc. Geology, University of the Philippines, 1935.

Took post-graduate courses in Economic Geology,  
University of the Philippines, 1936-1940.

Made studies and observations of basemetal mining and  
exploration projects in Japan, under the auspices of  
Mitsui Mining & Smelting Co., 1957.

**Professional  
Associations:**

Registered Geologist, Philippines Board of Examiners.  
Fellow, Geological Association of Canada.  
Member, Mineralogical Association of Canada.

**Philippines  
Experience:**

Eleven years teaching geology, University of the  
Philippines.

Three years Government Geologist for Philippines Bureau  
of Mines.

Fifteen years diversified experience in the practice of  
geology having been connected as Field, Mining, Exploration  
and Chief geologist for different mining and exploration  
companies, such as Mitsui Mining & Smelting Co., Marsman &  
Co., Elizalde & Co., Island Oil & Industrial Corporation  
and Marinduque Mining & Industrial Corporation.

**Canadian  
Experience:  
(1964-1974)**

Ten years geological experience as Mines, Exploration  
and Consulting Geologist at one time or another for  
Western Mines, Ltd. Kerr Addison Mines, Ltd. Condor Mines,  
Ltd. Cloumbia River Mines, Ltd. Mt. Sicker Mines, Ltd.  
and Nordic Management & Development, Ltd.

*Daniel M. Basco*

YUKON CLAIMS (Luck 15, ~~19~~, 17+21)  
(Luck 7-12)

TRENCHING - 1,554 cubic yards @ .75¢ per cu.yd = \$1,165.50  
(10 claims @ \$100.)

B.C. CLAIMS - (10 claims @ \$200 ) Cone 1,2,3,4,5,6,  
Luck 25,26,27,28

GEOLOGICAL RECONNAISSANCE (Salary Bosco) 750.00

Garth (wages) Alley 500.00

Accomodations and meals 400.00

Transportation (Jeep rental) 536.00

TOTAL \$2,186.00

YUKON CLAIMS Sandy 9-22, Sandy 24, Sandy 1

TRENCHING 2,318 cubic yards @ .75¢ = \$1,738.50  
(16 claims @ \$100)

B.C. CLAIMS-Sandy 25,26,28,29,31,33,39,40,43,44.  
(10 claims @ \$200.00 = \$2,000.00)

GEOLOGICAL RECONNAISSANCE (salary-Bosco) 750.00

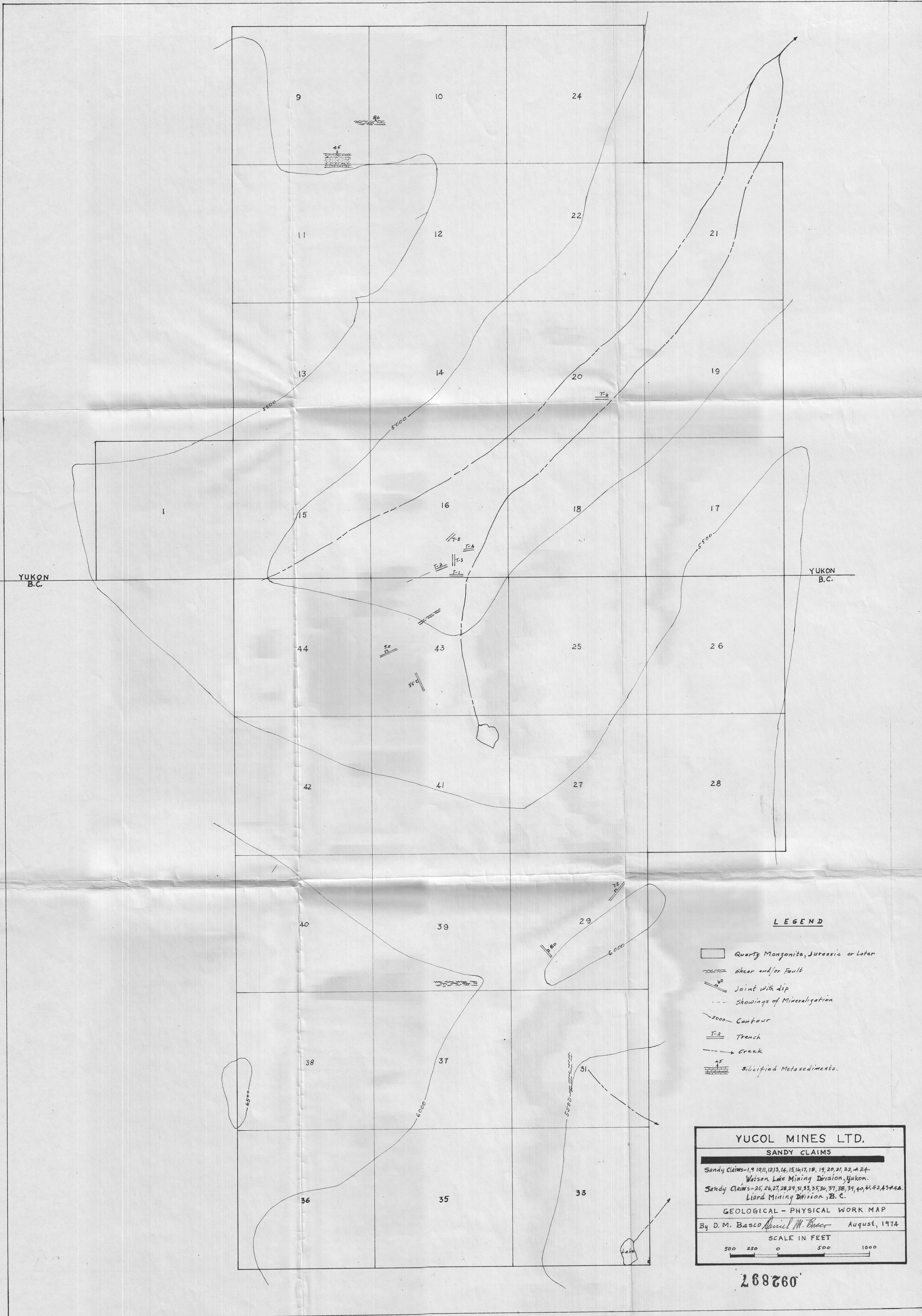
Garth Alley (wages) 500.00

Accomodations and meals 400.00

Transportation (jeep rental) 536.00

TOTAL \$2,186.00





LEGEND

- Quartz Monzonite, Jurassic or Later
- Shear and/or Fault
- Joint with dip
- Showings of Mineralization
- 5000 - Contour
- T-2 Trench
- Creek
- 45 Silicified Metasediments

YUCOL MINES LTD.

SANDY CLAIMS

Sandy Claims-1, 9, 10, 11, 12, 13, 14, 15, 16, 17, 18, 19, 20, 21, 22, 24, 25, 26, 27, 28, 29, 31, 33, 35, 36, 37, 38, 39, 40, 41, 42, 43, 44.

Watson Lake Mining Division, Yukon.

Sandy Claims-25, 26, 27, 28, 29, 31, 33, 35, 36, 37, 38, 39, 40, 41, 42, 43, 44.

Liard Mining Division, B.C.

GEOLOGICAL - PHYSICAL WORK MAP

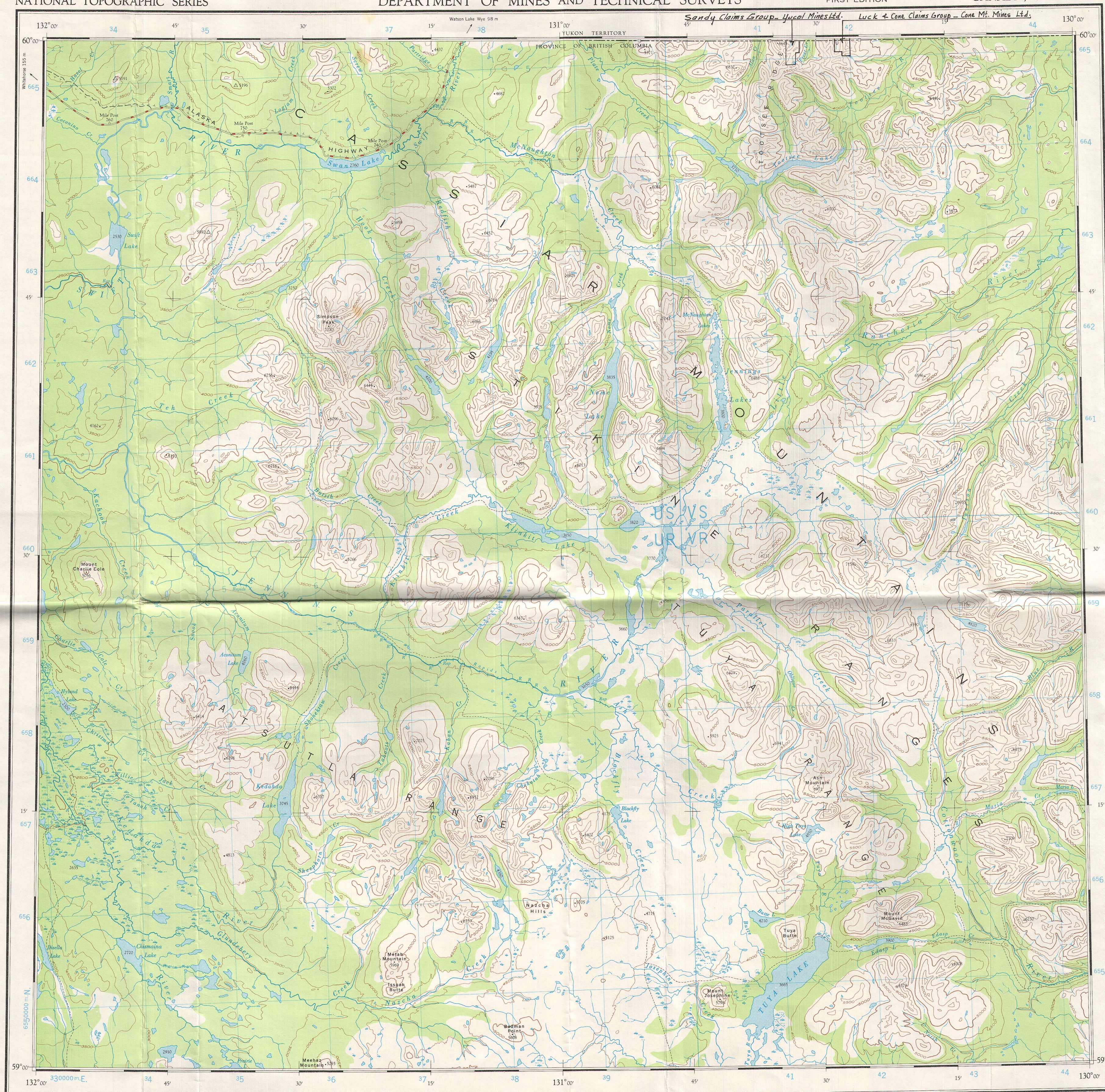
By D. M. Basco *Amiel M. Basco* August, 1974

SCALE IN FEET

500 250 0 500 1000

268260



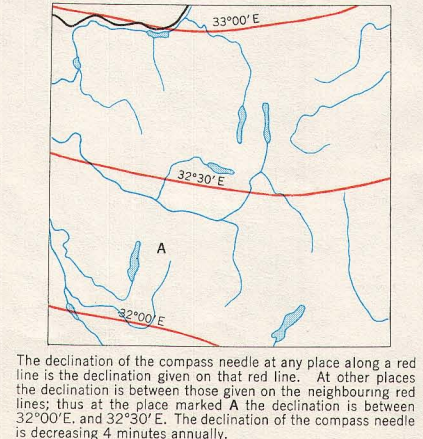


092897

TEN THOUSAND METRE  
UNIVERSAL TRANSVERSE MERCATOR GRID  
ZONE 9

GRID ZONE DESIGNATION	TO OBTAIN A STANDARD REFERENCE ON THIS SHEET TO NEAREST 1000 METRES
100,000 M. SQUARE IDENTIFICATION	SAMPLE POINT
US VS	ASH MOUNTAIN
UR VR	
40	14
	7
	1
EXAMPLE: 410000	SAMPLE REFERENCE: VR 1471
	9 VR 1471

THE DECLINATION OF THE COMPASS NEEDLE 1950



Surveys in 1947 and compilation in 1951 by the Topographical Survey from air photographs taken in 1948. Lithographed and printed by the Army Survey Establishment, R.C.E. Department of National Defence, 1952.

REFERENCE	REFERENCE
Road, Hard Surface, All Weather	2 Lines, Rock No.
Road, Loose Surface, All Weather	2 Lines or More
Wagon Road, Cart Track, etc.	Trail or Portage
Boundary, International	Boundary Mon.
Boundary, Provincial	Survey Mon.
Boundary, County or District	BM
Boundary, Indian Reserve, Park, etc.	239 A
Surveyed Line	Triangulation Sta.
Main Electric Power Line	Spot Elevation (in feet)
Railway, Standard Gauge	Telephone, Trunk Route
	Station
	Abandoned
	Single Track
	Stop

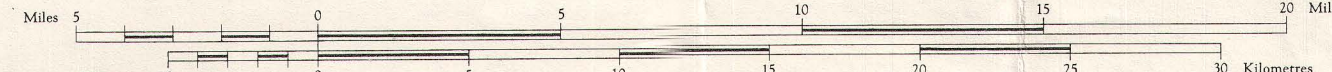
Universal Transverse Mercator Projection.

## JENNINGS RIVER

### BRITISH COLUMBIA

Scale 1:250,000

1 Inch to 4 Miles Approximately

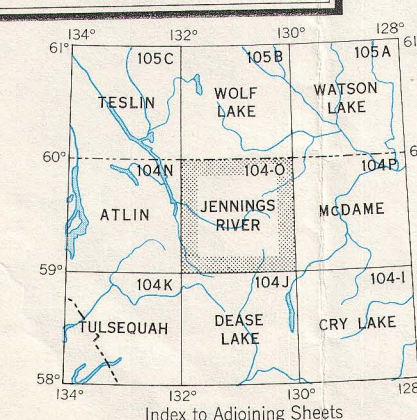


Contour interval 500 Feet  
All Elevations in Feet above Mean Sea Level.

The general public may obtain copies of this map from the  
Map Distribution Office, Dept. of Mines and Technical  
Surveys, Ottawa.

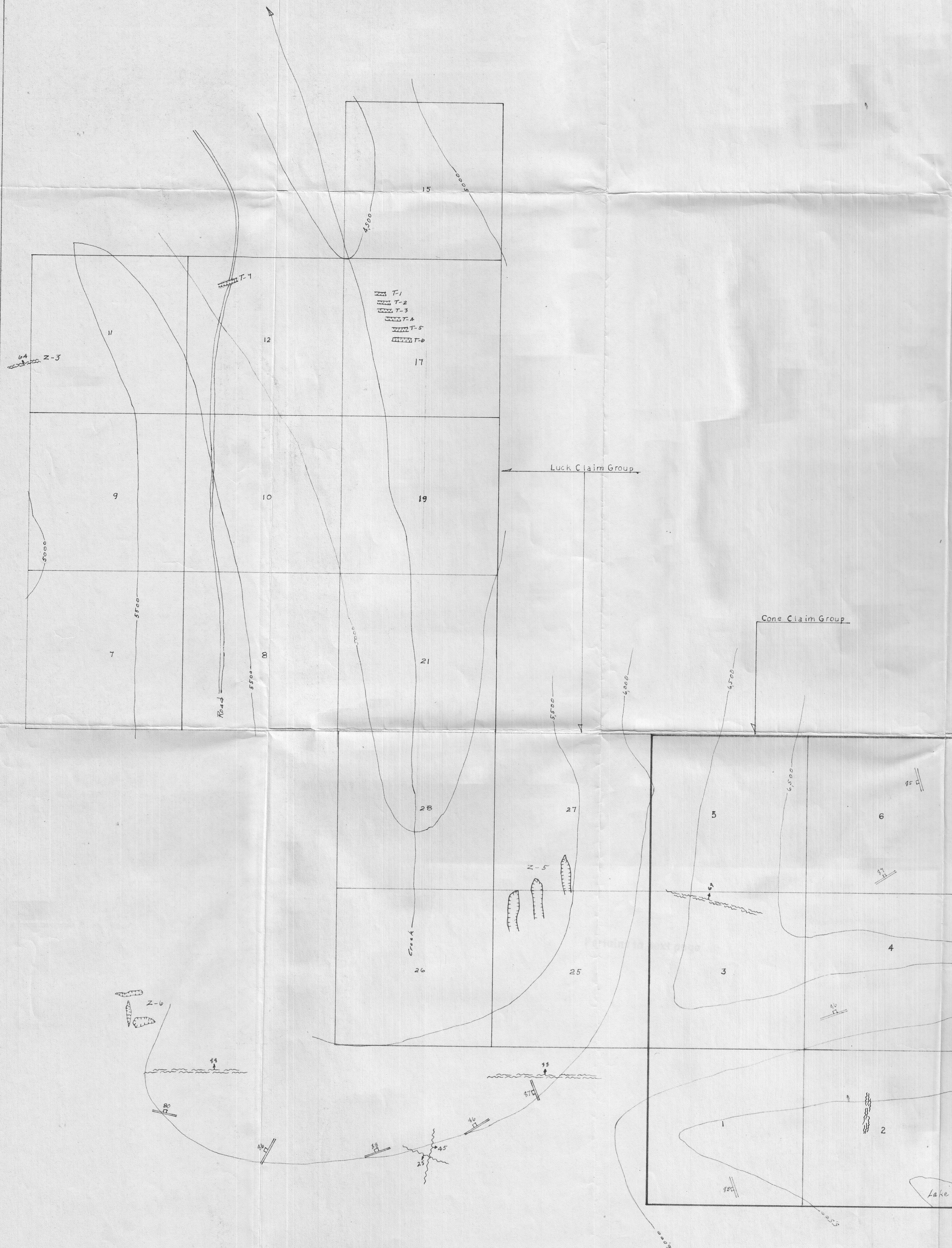
## REFERENCE

Building	Fire Lookout Tower	Contours, Elevation
School	Wireless Station	Contours, Depression
Post Office	Mine	Esker
Church	Wooded Area	Woods
Stream, Indefinite or Unsurveyed	Navigable Canal	Rapids and Falls
Stream, Intermittent	Ferry	Dam
Stream, in Dry River Bed	Lighthouse	Aerodrome (Elevation in feet)
Brackish Stream	Seaplane Anchorage	
Marsh or Swamp		
Marsh or Swamp, in water		
Glacier or Snowfield		
Sand, Gravel or Mud		



JENNINGS RIVER B.C.  
SHEET 104-O  
FIRST EDITION





Yukon  
B.C.

# LEGEND

- Biotite Quartz Mongonite, Jurassic or Later.
- Shear Zone with Dip
- D Joint, strike & Dip
- Z-3 Reported Showings in Zone.
- 5000 Contour Line with Elevation
- F Fault with Dip
- T-1 T-1 Trench, Numbered
- C Creek
- R Road

092897

**CONE MOUNTAIN MINES LTD.**  
 Claims: Luck 7,8,9,10,11,12,15,17,19 & 21  
 Watson Lake Mining Division, Yukon  
 CLAIMS: Cone 1-6 & Luck 25-28  
 Liard Mining Division, B.C.

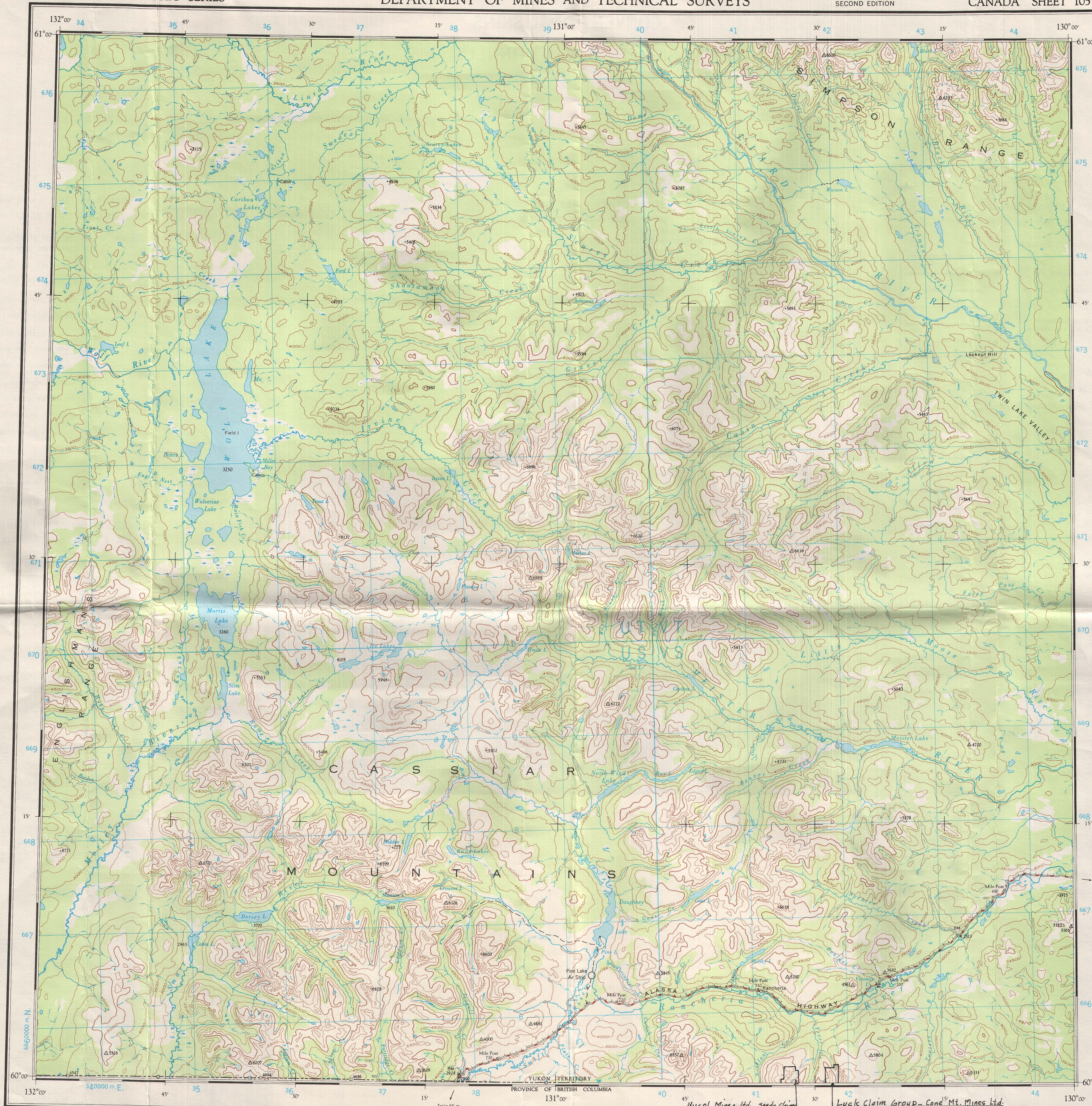
GEOLOGICAL - PHYSICAL WORK MAP

By D. M. BASCO *David M. Basco* August, 1974

SCALE IN FEET

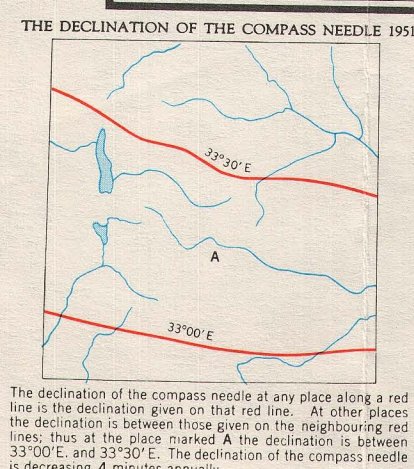
500 250 0 500 1000





TEN THOUSAND METRE  
UNIVERSAL TRANSVERSE MERCATOR GRID  
ZONE 9

GRID ZONE DESIGNATION		TO OBTAIN A STANDARD REFERENCE ON THIS SHEET TO NEAREST 1000 METRES	
UT VT	US VS	TRIANGULATION	STA.
670	40	1	5
410000		VT1509	9VT1509



Surveys by the Topographical Survey in 1947. Compiled by the Topographical Survey in 1950 from air photographs taken in 1948. Lithographed and printed by the Army Survey Est. R.C.E., Dept. of National Defence, 1952.

REFERENCE

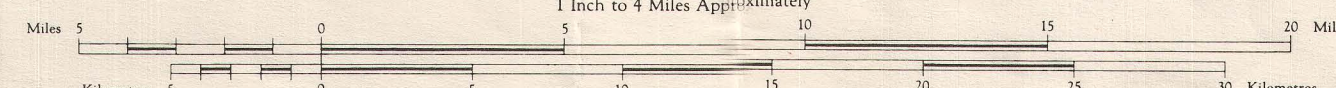
Road, Hard Surface, All Weather	More than 2 Lanes	2 Lanes	Road No.	Less than 2 Lanes
Road, Loose Surface, All Weather	2 Lanes or More	Less than 2 Lanes		Dry Weather
Road, Waggon, etc.	Trail or Portage			
Boundary, International	Boundary Mon.			
Boundary, Provincial	Survey Mon.			
Boundary, County or District	Bench Mark			
Boundary, Indian Reserves, Park	Triangulation Sta.			
Surveyed Line	Spot Elevation (in feet)			
Mar. Electric Power Line	Telephone, Trunk Route			
Railway, Standard Gauge	Station			

Universal Transverse Mercator Projection.

WOLF LAKE  
YUKON TERRITORY

Scale 1:250,000

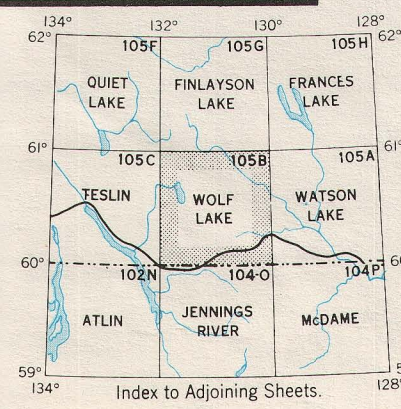
1 inch to 4 Miles Approximately



Copies may be obtained from the Map Distribution Office, Department of Mines and Technical Surveys, Ottawa.

REFERENCE

Building	Fire Lookout Tower	Contours, Elevation
School	Wireless Station	Contours, Approximate
Post Office	Mine	Contours, Depression
Church	Cliff	Esker
Stream, Indefinite or Unsurveyed	Wooded Areas	Hangable Canal
Stream, Intermittent	Hangable Canal	Rapid and Falls
Stream, in Dry River Bed	Ferry	Dam
Stream, in Dry River Bed	Lighthouse	Aerodrome (Elevation in feet)
Marsh or Swamp	Seaplane Anchorage	
Marsh or Swamp, in water		
Gacier or Snowfield		
Sand, Gravel or Mud		



WOLF LAKE Y.T.  
SHEET 105B  
SECOND EDITION

092897