

MAP NO.: ASSESSMENT REPORT X  
115 G 9 PROSPECTUS  
CONFIDENTIAL X  
OPEN FILE

DOCUMENT NO: 092536  
MINING DISTRICT: WHITEHORSE  
TYPE OF WORK: GEOCHEMICAL  
GEOLOGICAL

REPORT FILED UNDER: United Keno Hill Mines Ltd.

DATE PERFORMED: August, 1987

DATE FILED: September 27, 1988

LOCATION: LAT.: 61<sup>0</sup>43'N

AREA: Talbot Creek

LONG.: 138<sup>0</sup>19'W

VALUE \$: 1,200.00

CLAIM NAME & NO.: TAL 1-4 (YB06681-684)

WORK DONE BY: Lori A Walton

WORK DONE FOR: United Keno Mines Ltd.

DATE TO GOOD STANDING:

REMARKS: #52 DWARF

Reconnaissance soil samples taken in 1988 were analysed for 30 elements. One sample from the TAL claims was weakly anomalous in gold.



092536

M.R. file no.
R.M.M.R. file no.
Date forwarded 27 Sept 88

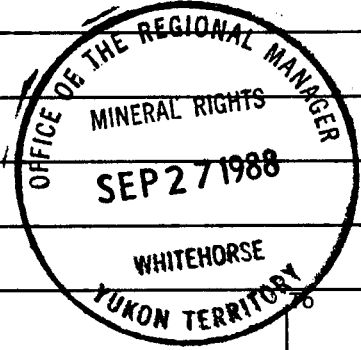
TRANSMITTAL FORM

From Mining Recorder at: Whitehorse

To Regional Manager, Mineral Rights at Whitehorse, Y.T.

For action are:

<input type="checkbox"/> NEW APPLICATION FOR PLACER LEASE TO PROSPECT	Name	
<input type="checkbox"/> RENEWAL APPLICATION PLACER LEASE TO PROSPECT	Name	Lease no.
<input type="checkbox"/> AFFIDAVIT OF EXPENDITURE ON PLACER LEASE	Name	Lease no.
<input type="checkbox"/> SECURITY DEPOSIT		
<input type="checkbox"/> FINANCIAL ABILITY		
<input type="checkbox"/> ASSIGNMENT OF PLACER LEASE NO.	From	
<input type="checkbox"/> GROUPING APPLICATION UNDER SEC. 52(2) PLACER MINING ACT.	Owner	
<input type="checkbox"/> DIAMOND DRILL LOGS	Claims	Claim sheet no.
<input type="checkbox"/> QUARTZ ASSESSMENT REPORT	Claims Type of report Submitted by Cls. work performed on	Claim sheet no. \$ req. for ren. application



TAL 1-4 YB06681 - YB06684  
 Geo / Geoch  
 Submitted by: UNITED KINGDOM Hill Mining  
 TAL 1-4 YB06681 - YB06684  
 Claim sheet no. 115-G-9  
 \$ req. for ren. application \$1,200.00

Signature [Handwritten Signature]

092536

Date returned 7 October, 88

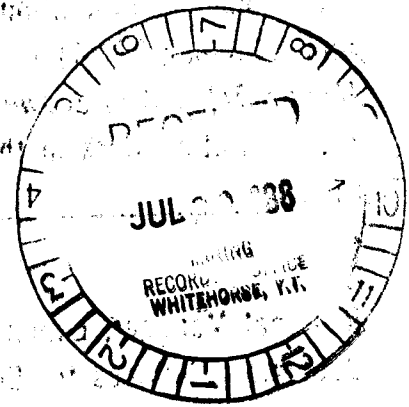
REPLY ACTION

Approved for amount required

#52 DWARF

Signature [Handwritten Signature]

092536



**UNITED KENO HILL MINES LIMITED**

**Geological and Geochemical Report  
on the  
TAL Claim Group  
August, 1987**

**Whitehorse Mining District**

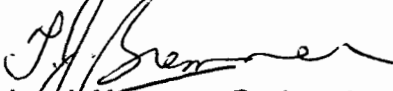
**NTS 115 G/9**

092536'

**Supervised by: Dennis R. Prince  
Field Work by: Lori A. Walton  
Report Written by: Dennis J. Ouellette**

**Date: October, 1987**

This report has been examined by  
the Geological Evaluation Unit  
under Section 53 (4) Yukon Quartz  
Mining Act and is allowed as  
representation work in the amount  
of \$ 1200.00.

*for*   
Regional Manager, Exploration and  
Geological Services for Commissioner  
of Yukon Territory.

## TABLE OF CONTENTS

	Page
INTRODUCTION . . . . .	1
LOCATION AND ACCESS . . . . .	2
PHYSIOGRAPHY . . . . .	4
HISTORY . . . . .	5
GEOLOGY . . . . .	6
GEOCHEMISTRY . . . . .	7
PROPERTY . . . . .	9
RESULTS AND RECOMMENDATIONS . . . . .	11
REFERENCES . . . . .	12
APPENDIX I: STATEMENT OF COSTS . . . . .	13
APPENDIX II: PERSONNEL . . . . .	14
APPENDIX III: SAMPLE RESULTS . . . . .	15
CERTIFICATE OF QUALIFICATIONS . . . . .	20

## LIST OF FIGURES

FIGURE 1: TAL CLAIMS LOCATION AND ACCESS MAP . . . . .	3
FIGURE 2: TAL CLAIMS LOCATION MAP . . . . .	8
FIGURE 3: TAL CLAIMS SAMPLE LOCATION MAP . . . . .	10

## INTRODUCTION

The TAL claim group was staked in response to information gathered from the release of G.S.C. Open File 1362. The group covers an anomalous area as defined by elevated results in several elements from the analysis of silt samples.

A two person geological crew was dispatched to the area on August 9, 1987 to conduct a preliminary prospecting program. This report deals with the results of the survey.

#### LOCATION AND ACCESS

The TAL claim group is located on NTS map sheet 115 G/9 and is situated 115 air kilometers from the town of Haines Junction. Access to the claim group is by air only. A Bell 206 Jet Ranger, belonging to Trans North Air and based in Haines Junction, was contracted.



ALASKA

<b>UNITED KENO HILL MINES LTD.</b> EXPLORATION DEPARTMENT WHITEHORSE — YUKON		FIGURE 1
<b>TAL CLAIMS          LOCATION MAP</b>		
<i>Mining District</i> WHITEHORSE <i>N.T.S. Sheet No.</i> 115-G/9 <i>Scale</i> 1:2,500,000		
Drawn by R.H.S.	Date 88/07/22	





## PHYSIOGRAPHY

The TAL claims lie within the Nisling Range on the uplands of the Yukon plateau. Elevations from creek bottoms to ridge tops range from 1200 meters to 1800 meters. The ridge on which the claims are situated is northwest trending and is terminated by a northeast trending stream valley to the southeast. Though largely above tree line and fairly steep-sloped, the area lacks outcrop. The cropping out of rock probably represents less than 5% of the area; the bulk of the rest being felsenmeer and talus. This material is a fairly reliable indicator of the local rock type.

Vegetation on the claim group is limited to grass, mosses, lichens and alpine flowers, though the creek valleys below the claim group have an abundance of alder, willow and stunted spruce. The trellis drainage pattern in the area is typical of areas with a high degree of structural control.

Unconsolidated glacially derived sediments occupy the stream valleys but the majority of the claim group is unglaciated.

## HISTORY

The area was initially examined in the early 1970s by Dynasty Explorations Limited and Canadian Occidental Petroleum Limited for its copper-molybdenum potential. Regional silt sampling techniques were used.

Results from the surveys were sufficiently encouraging to warrant the staking of several claim groups in the area over the next few years. Many small and a few large showings were discovered during the few years that work was done on the properties. All showings were deemed sub-economic on the basis of surface data. The properties sat idle until they were allowed to lapse in 1987. No apparent activity has occurred in the area since the early seventies.

## GEOLOGY

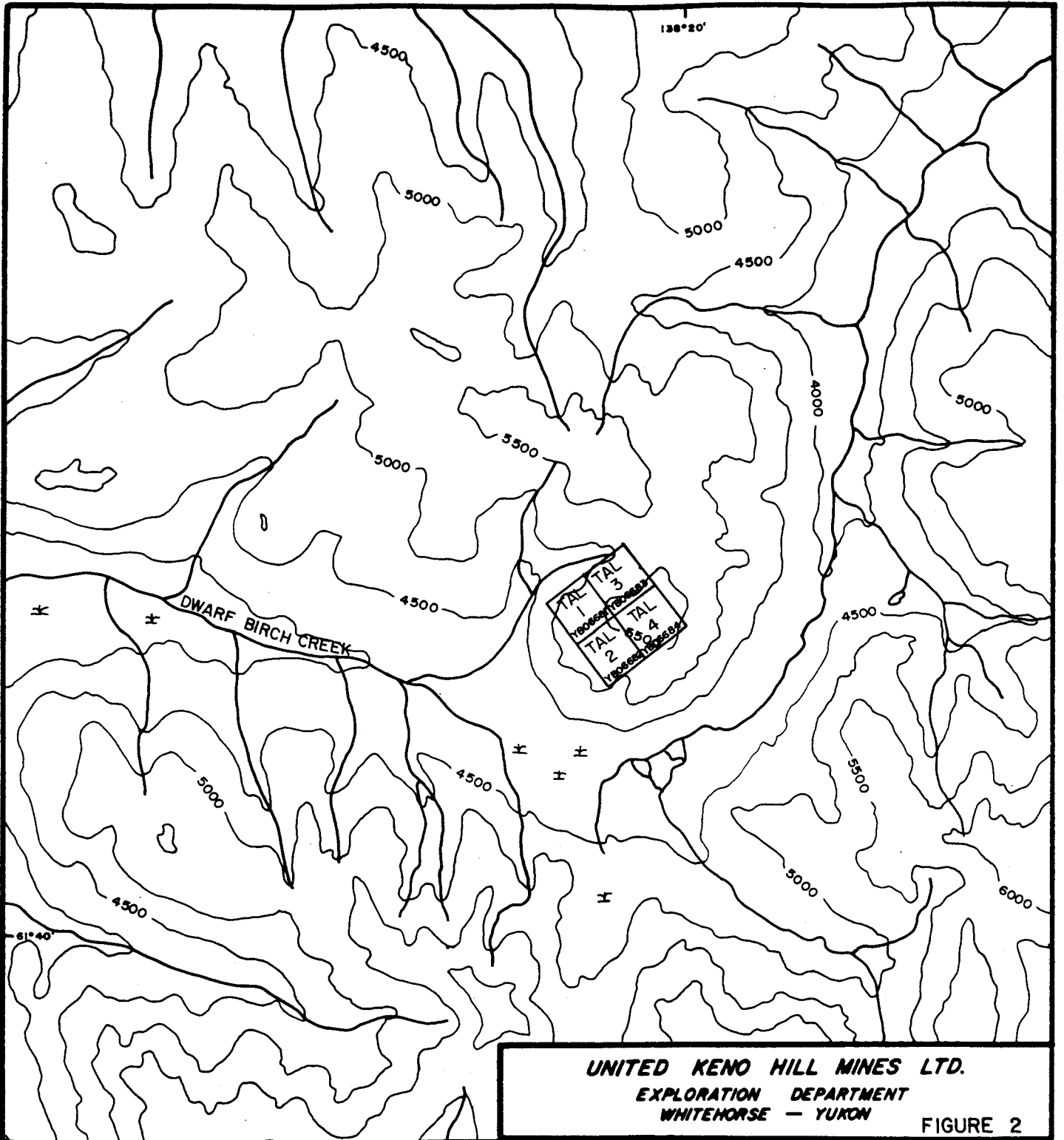
The TAL claims are situated in an area of Yukon Group metasediments. The metasediments consist of coarse grained marble, laminated quartzite and quartz mica-schist. They have been intruded by acid dikes and small stocks. The dikes and stocks include medium and fine grained alaskite, quartz-feldspar porphyry, rhyolite and rhyolite cemented breccias. The felsic intrusives are probably related to an intrusion of biotite alaskite which crops out several kilometers to the south (P. Dean, 1972). The youngest rocks in the area are northeast trending, fine grained to aphanitic, dark green to black, non-porphyrific basic dikes.

Occurrences of base metal mineralization have been reported as minor stratabound lead zinc mineralization in the quartzites; porphyry copper and porphyry molybdenum in the biotite alaskite; and molybdenum in dry fractures, also within the alaskite. No new mineralization was discovered during the initial prospecting of the property in 1987.

## GEOCHEMISTRY

A two person crew was dispatched to the property in August, 1987 to do an initial prospecting survey of the property. Twelve soil and rock samples were collected and sent to Chemex Labs in Vancouver for multi-element analysis. The samples were collected from two lines oriented in a northeast-southwest direction, parallel to the claim line. Sample sites were spaced about 200 meters apart along the lines.

Using Induced Coupled Plasma Spectrophotometry (ICP) with nitric-aqua regia digestion, the dried and sieved (-80 mesh) samples were analyzed for Al, Ag, As, Ba, Bi, Ca, Cd, Co, Cr, Cu, Fe, Ga, Hg, K, La, Mg, Mn, Mo, Na, P, Pb, Sb, Se, Sr, Ti, Tl, U, V, W and Zn. Chemex Labs warns that nitric-aqua regia digestion may not be complete for Al, Ba, Be, Ca, Cr, Ga, K, La, Mg, Na, Sr, Ti, Tl and W. The samples were analyzed for gold by Neutron Activation (NAA).



**UNITED KENO HILL MINES LTD.**  
**EXPLORATION DEPARTMENT**  
**WHITEHORSE - YUKON**

**FIGURE 2**

**TAL CLAIMS  
 LOCATION MAP**

**Mining District WHITEHORSE**

**N.T.S. Sheet No. 115-G/9**

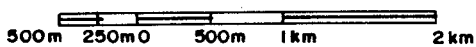
**Scale 1:50,000**

**Drawn by H.D.P.**

**Date 88/01/19**



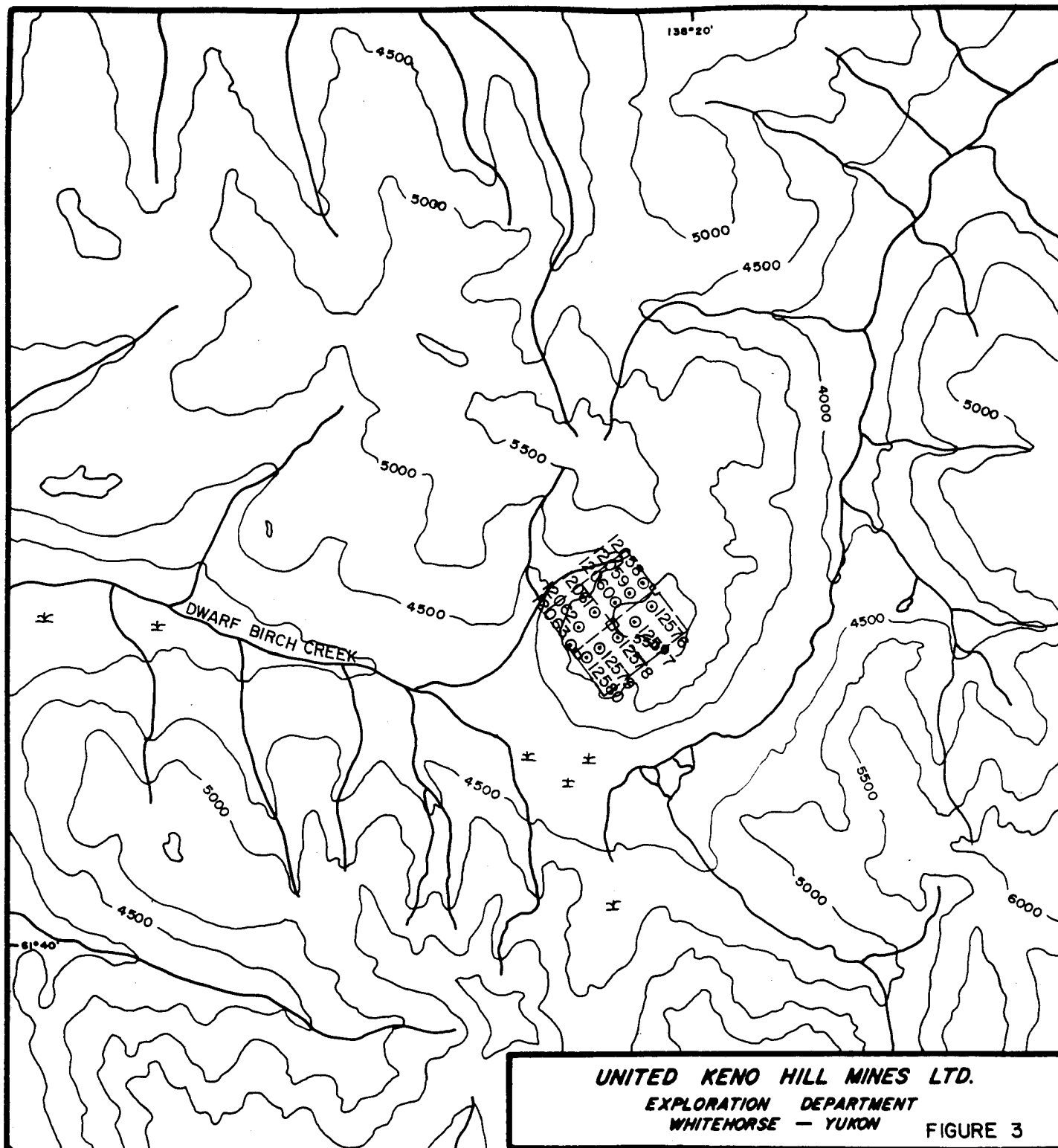
**SCALE**



**PROPERTY**

The TAL claims consist of four contiguous claims staked in a square pattern on the top of a knoll at the east end of an east-west trending ridge. The following is a list of the claim names and their tag numbers:

TAL 1	YB06681
TAL 2	YB06682
TAL 3	YB06683
TAL 4	YB06684



**UNITED KENO HILL MINES LTD.**  
 EXPLORATION DEPARTMENT  
 WHITEHORSE — YUKON **FIGURE 3**

**TAL CLAIMS  
 SAMPLE LOCATION MAP**

*Mining District* WHITEHORSE  
*N.T.S. Sheet No.* 115-G/9  
*Scale* 1:50,000

*Drawn by* H.D.P.

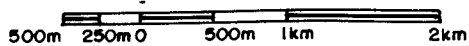
*Date* 88/01/19

**LEGEND**

- ⊙ Soil sample
- ⊕ Claim post



**SCALE**



## RESULTS AND RECOMMENDATIONS

G.S.C. Open File 1362 shows an area of approximately 100 square kilometers within which most of the stream sediment samples taken are anomalous in a number of elements. Those elements are silver, lead, arsenic, barium and zinc. Results from the geochemical prospecting traverse conducted in 1987 by United Keno Hill Mines Limited on the TAL claims within the area did not satisfactorily reflect the G.S.C. results.

No silver, lead or zinc soil anomalies were found on the property, although a weak gold anomaly up to 25 ppb Au was noted on the southern line. All other elements are considered non-anomalous.

Since the samples are so widely spaced, more information is required to further evaluate the gold anomaly. A more closely spaced soil sample grid is recommended to delineate the anomalous zones.

D 92580



**REFERENCES**

- Dean, P. 1972. Geological and Geochemical Evaluation/Blue "L" Mineral Claims. Dynasty Explorations Limited company report.
- Muller, J. E. 1967. Kluane Lake Map Area, Yukon Territory. Geological Survey of Canada, Memoir 340.
- Saracoglu, N. 1973. Geology, Geochemistry and Ground Magnetometry of the Rib Claims. Canadian Occidental Petroleum Ltd. company report.
- Winfield, W. D. B. and Gleeson, C. F. 1972. Geology and Geochemistry of the Bir Claim Group. Canadian Occidental Petroleum Ltd. company report.

**APPENDIX I**  
**STATEMENT OF COSTS**

Helicopter	\$ 290.70
Camp operations	35.59
Salaries	720.00
Assay	209.16
Miscellaneous	<u>2.16</u>
TOTAL	\$ 1,257.61

This total represents three years of assessment work to be applied to the TAL claims numbered 1 through 4 inclusive.

**APPENDIX II**  
**PERSONNEL**

**Geologist:**

Lori A. Walton  
#6 Beech Street  
Whitehorse, Yukon  
Y1A 4A6

Dennis J. Ouellette  
#6 Beech Street  
Whitehorse, Yukon  
Y1A 4A6

**Assistant:**

Jane Evens  
#3323 Barrett Place N.W.  
Calgary, Alberta  
T2L 1W5

**Drafting by:**

Holly Plaskett  
409 Black Street  
Whitehorse, Yukon  
Y1A 4A6

**APPENDIX III**  
**SAMPLE RESULTS**



# Chemex Labs Ltd.

Analytical Chemists • Geochemists • Registered Assayers

212 BROOKSBANK AVE., NORTH VANCOUVER,  
BRITISH COLUMBIA, CANADA V7J-2C1

PHONE (604) 984-0221

T. NITED KENO HILL MINES LIMITED

409 BLACK ST.  
WHITEHORSE, YUKON  
Y1A 2N2

Project : DWA/P/S

Comments:

Page No. -A  
Tot. Pages. 2  
Date : 17-SEP-87  
Invoice # : I-8720429  
P.O. # : NONE

## CERTIFICATE OF ANALYSIS A8720429

SAMPLE DESCRIPTION	PREP CODE		Au NAA	Al	Ag	As	Ba	Be	Bi	Ca	Cd	Co	Cr	Cu	Fe	Ga	Hg	K	La	Mg	Mn
			ppb	%	ppm	ppm	ppm	ppm	ppm	%	ppm	ppm	ppm	ppm	%	ppm	ppm	%	ppm	%	ppm
12042	201	238	4	2.21	< 0.2	< 5	270	< 0.5	< 2	0.28	0.5	14	45	50	3.25	< 10	< 1	0.08	20	0.54	468
12043	201	238	2	1.90	0.8	5	430	< 0.5	< 2	0.16	0.5	13	47	53	3.88	< 10	< 1	0.11	10	0.50	721
12044	201	238	3	2.38	0.2	10	200	0.5	< 2	0.24	0.5	18	47	48	3.55	10	< 1	0.18	20	0.83	733
12045	201	238	2	1.07	1.0	10	150	< 0.5	< 2	0.17	< 0.5	12	22	30	2.85	< 10	< 1	0.10	10	0.35	624
12046	201	238	2	2.21	0.4	5	130	0.5	< 2	0.29	1.0	21	44	50	3.52	10	< 1	0.11	20	0.65	704
12047	201	238	< 1	1.48	0.2	10	100	< 0.5	< 2	0.21	0.5	11	28	30	3.19	10	< 1	0.08	10	0.42	385
12048	201	238	4	1.81	< 0.2	20	130	0.5	< 2	0.24	< 0.5	12	33	36	3.39	10	< 1	0.11	20	0.56	462
12049	201	238	6	1.56	< 0.2	15	130	0.5	< 2	0.33	0.5	13	32	37	3.17	10	< 1	0.08	20	0.52	544
12050	201	238	3	2.05	< 0.2	25	110	0.5	< 2	0.25	< 0.5	14	40	28	3.31	10	< 1	0.08	20	0.53	528
12051	201	238	2	2.42	< 0.2	5	100	0.5	< 2	0.32	< 0.5	16	38	28	3.03	10	< 1	0.12	20	0.62	540
12052	201	238	< 1	0.65	0.8	< 5	50	< 0.5	< 2	0.18	< 0.5	6	8	14	1.99	< 10	< 1	0.06	< 10	0.20	179
12053	201	238	< 1	2.01	< 0.2	5	110	< 0.5	< 2	0.27	< 0.5	12	35	38	3.72	10	< 1	0.18	30	0.60	326
12054	201	238	< 1	2.02	< 0.2	10	100	< 0.5	< 2	0.28	< 0.5	13	36	28	3.90	10	1	0.27	20	0.69	388
12055	201	238	2	1.65	< 0.2	10	90	< 0.5	< 2	0.23	< 0.5	14	36	28	3.71	10	< 1	0.19	10	0.58	571
12056	201	238	< 1	3.17	< 0.2	35	150	0.5	< 2	0.41	< 0.5	19	41	37	3.42	10	< 1	0.21	30	0.80	743
12057	201	238	13	1.51	< 0.2	< 5	70	< 0.5	< 2	0.43	< 0.5	13	27	23	3.25	10	< 1	0.10	20	0.47	584
12058	201	238	2	0.87	0.2	< 5	220	< 0.5	< 2	0.27	< 0.5	7	16	33	2.14	< 10	1	0.04	10	0.26	231
12059	201	238	12	2.29	< 0.2	5	170	0.5	< 2	0.46	1.0	18	48	81	3.56	< 10	< 1	0.14	30	0.70	530
12060	201	238	12	1.86	< 0.2	5	100	< 0.5	< 2	0.17	< 0.5	12	49	41	3.53	< 10	< 1	0.11	10	0.64	363
12061	201	238	7	1.70	< 0.2	15	130	< 0.5	< 2	0.18	< 0.5	10	41	46	3.05	< 10	< 1	0.12	10	0.47	362
12062	201	238	1	1.85	< 0.2	15	90	< 0.5	< 2	0.18	< 0.5	10	38	37	3.68	10	2	0.08	10	0.50	371
12063	201	238	3	1.69	< 0.2	< 5	140	< 0.5	< 2	0.20	< 0.5	11	39	34	3.72	10	< 1	0.16	10	0.53	474
12064	201	238	5	1.44	0.4	35	250	< 0.5	< 2	0.51	2.0	13	40	67	2.97	< 10	< 1	0.14	20	0.56	615
12065	201	238	13	1.35	< 0.2	45	150	< 0.5	< 2	0.79	0.5	15	46	34	2.75	10	< 1	0.16	30	0.72	394
12066	201	238	1	1.74	< 0.2	30	180	< 0.5	< 2	0.94	1.0	15	48	27	3.18	10	< 1	0.26	30	0.85	426
12067	201	238	2	1.49	0.4	20	240	< 0.5	< 2	0.60	1.5	13	35	34	3.02	10	< 1	0.14	20	0.60	666
12563	201	238	3	1.84	< 0.2	10	360	< 0.5	< 2	0.28	0.5	13	42	45	3.98	10	< 1	0.10	20	0.53	625
12564	201	238	2	2.25	< 0.2	10	190	< 0.5	< 2	0.28	1.0	18	52	38	4.43	10	< 1	0.10	10	0.79	760
12565	201	238	6	1.60	1.2	15	190	< 0.5	< 2	0.21	1.0	14	42	45	4.35	10	2	0.12	10	0.51	658
12566	201	238	7	1.88	3.8	35	170	< 0.5	< 2	0.25	0.5	14	42	47	4.13	10	< 1	0.11	20	0.53	526
12567	201	238	15	1.89	2.4	< 5	110	< 0.5	< 2	0.27	1.0	14	37	54	3.58	10	< 1	0.06	20	0.54	437
12568	201	238	< 1	2.07	< 0.2	< 5	100	< 0.5	< 2	0.29	< 0.5	15	36	33	3.08	< 10	< 1	0.08	20	0.62	446
12569	201	238	16	1.49	< 0.2	< 5	110	0.5	< 2	0.26	0.5	15	30	36	3.15	< 10	< 1	0.09	30	0.43	662
12570	201	238	2	2.64	< 0.2	30	120	0.5	< 2	0.85	0.5	24	71	58	3.62	10	< 1	0.29	20	1.10	621
12571	201	238	2	2.55	< 0.2	< 5	140	0.5	< 2	0.44	< 0.5	15	46	32	3.13	10	< 1	0.17	30	0.75	429
12572	201	238	3	1.85	< 0.2	15	70	< 0.5	< 2	0.25	< 0.5	13	34	26	3.39	10	< 1	0.14	20	0.66	359
12573	201	238	3	2.07	< 0.2	5	80	< 0.5	< 2	0.30	< 0.5	12	33	25	2.87	10	< 1	0.23	30	0.71	353
12574	201	238	2	2.28	< 0.2	< 5	90	0.5	2	0.31	< 0.5	16	36	28	3.08	10	< 1	0.31	30	0.73	346
12575	201	238	< 1	1.18	< 0.2	< 5	50	< 0.5	< 2	0.93	0.5	12	16	27	2.50	10	< 1	0.08	20	0.30	569
12576	201	238	11	1.97	0.2	15	160	< 0.5	4	0.58	0.5	16	44	67	2.91	10	< 1	0.12	30	0.60	410

CERTIFICATION :



# Chemex Labs Ltd.

Analytical Chemists \* Geochemists \* Registered Assayers

212 BROOKSBANK AVE., NORTH VANCOUVER,  
BRITISH COLUMBIA, CANADA V7J-2C1

PHONE (604) 984-0221

UNITED KENO HILL MINES LIMITED

409 BLACK ST.  
WHITEHORSE, YUKON  
Y1A 2N2

Project : DWA/P/S

Comments :

Page No. -B  
Tot. Page. 2  
Date : 17-SEP-87  
Invoice # : I-8720429  
P.O. # : NONE

## CERTIFICATE OF ANALYSIS A8720429

SAMPLE DESCRIPTION	PREP CODE	Mo ppm	Na %	Ni ppm	P ppm	Pb ppm	Sb ppm	Se ppm	Sr ppm	Ti %	Tl ppm	U ppm	V ppm	W ppm	Zn ppm
12042	201 238	2	< 0.01	43	930	26	< 5	< 10	30	0.14	< 10	< 10	124	< 5	226
12043	201 238	5	< 0.01	46	1730	28	< 5	10	28	0.07	< 10	< 10	180	< 5	138
12044	201 238	< 1	< 0.01	45	940	18	< 5	< 10	44	0.12	< 10	< 10	79	< 5	153
12045	201 238	< 1	0.02	22	1230	20	< 5	< 10	25	0.08	< 10	< 10	78	< 5	86
12046	201 238	< 1	< 0.01	45	770	20	< 5	10	31	0.15	< 10	< 10	87	< 5	175
12047	201 238	< 1	0.01	22	720	78	< 5	10	26	0.12	< 10	< 10	81	< 5	109
12048	201 238	< 1	< 0.01	27	470	28	< 5	< 10	26	0.14	< 10	< 10	78	< 5	83
12049	201 238	< 1	0.01	29	680	14	< 5	< 10	30	0.14	< 10	< 10	73	< 5	99
12050	201 238	< 1	< 0.01	25	460	2	< 5	< 10	27	0.14	< 10	< 10	75	< 5	67
12051	201 238	< 1	< 0.01	31	660	12	< 5	10	22	0.16	< 10	< 10	60	< 5	67
12052	201 238	1	0.03	7	710	28	< 5	< 10	15	0.10	< 10	< 10	64	< 5	45
12053	201 238	2	0.01	30	1170	14	< 5	10	33	0.11	< 10	< 10	77	< 5	78
12054	201 238	< 1	< 0.01	24	580	14	< 5	10	26	0.20	< 10	< 10	71	< 5	75
12055	201 238	< 1	0.01	24	630	12	< 5	10	26	0.19	< 10	< 10	91	< 5	79
12056	201 238	< 1	0.02	38	870	4	< 5	10	37	0.18	< 10	< 10	66	< 5	85
12057	201 238	< 1	0.02	23	560	12	< 5	10	33	0.15	< 10	< 10	87	< 5	75
12058	201 238	< 1	0.01	17	990	6	< 5	< 10	25	0.08	< 10	< 10	70	< 5	68
12059	201 238	< 1	< 0.01	52	1640	14	< 5	20	24	0.14	< 10	< 10	142	< 5	220
12060	201 238	< 1	< 0.01	36	570	6	< 5	10	17	0.14	< 10	< 10	135	< 5	94
12061	201 238	< 1	< 0.01	35	920	18	< 5	10	19	0.10	< 10	< 10	155	< 5	87
12062	201 238	2	< 0.01	25	420	24	< 5	10	23	0.15	< 10	< 10	113	< 5	76
12063	201 238	2	< 0.01	29	490	8	< 5	< 10	25	0.16	< 10	< 10	129	< 5	101
12064	201 238	1	0.02	60	1050	4	< 5	< 10	32	0.09	< 10	< 10	101	< 5	261
12065	201 238	< 1	0.02	44	920	6	< 5	< 10	41	0.10	< 10	< 10	59	< 5	102
12066	201 238	< 1	0.03	39	1030	12	< 5	< 10	67	0.15	< 10	< 10	74	< 5	159
12067	201 238	< 1	0.02	41	1200	48	5	< 10	42	0.13	< 10	< 10	90	< 5	293
12563	201 238	< 1	< 0.01	42	1000	56	< 5	10	34	0.12	< 10	< 10	134	< 5	184
12564	201 238	< 1	< 0.01	43	890	20	< 5	10	32	0.13	< 10	< 10	115	< 5	150
12565	201 238	2	0.01	36	920	126	< 5	10	36	0.12	< 10	< 10	112	< 5	155
12566	201 238	< 1	< 0.01	32	680	140	< 5	10	36	0.14	< 10	< 10	105	< 5	154
12567	201 238	< 1	< 0.01	30	640	720	< 5	10	27	0.15	< 10	< 10	79	< 5	206
12568	201 238	< 1	0.01	28	520	24	< 5	20	24	0.15	< 10	< 10	69	< 5	79
12569	201 238	< 1	< 0.01	40	580	12	< 5	10	22	0.12	< 10	< 10	67	< 5	148
12570	201 238	< 1	0.07	84	920	20	< 5	10	52	0.22	< 10	< 10	74	< 5	114
12571	201 238	< 1	0.01	38	730	28	< 5	10	32	0.18	< 10	< 10	63	< 5	100
12572	201 238	< 1	< 0.01	30	350	2	< 5	10	18	0.18	< 10	< 10	65	< 5	79
12573	201 238	< 1	< 0.01	30	570	< 2	< 5	10	21	0.18	< 10	< 10	55	< 5	61
12574	201 238	< 1	0.01	35	480	2	< 5	10	25	0.20	< 10	< 10	53	< 5	71
12575	201 238	< 1	0.04	15	1030	2	< 5	10	43	0.10	< 10	< 10	66	< 5	58
12576	201 238	< 1	< 0.01	57	1890	18	< 5	10	28	0.14	< 10	< 10	136	< 5	162

092335

CERTIFICATION :



# Chemex Labs Ltd.

Analytical Chemists \* Geochemists \* Registered Assayers  
212 BROOKSBANK AVE., NORTH VANCOUVER,  
BRITISH COLUMBIA, CANADA V7J-2C1  
PHONE (604) 984-0221

UNITED KENO HILL MINES LIMITED

409 BLACK ST.  
WHITEHORSE, YUKON  
Y1A 2N2

Project : DWA/P/S  
Comments:

Page No. -A  
Tot. Pages 2  
Date : 17-SEP-87  
Invoice # : I-8720429  
P.O. # : NONE

## CERTIFICATE OF ANALYSIS A8720429

SAMPLE DESCRIPTION	PREP CODE		Au NAA	Al	Ag	As	Ba	Be	Bi	Ca	Cd	Co	Cr	Cu	Fe	Ga	Hg	K	La	Mg	Mn
			ppb	%	ppm	ppm	ppm	ppm	ppm	%	ppm	ppm	ppm	ppm	%	ppm	ppm	%	ppm	%	ppm
12577	201	238	21	2.18	< 0.2	< 5	150	< 0.5	4	0.38	< 0.5	14	41	40	3.15	10	1	0.12	20	0.63	455
12578	201	238	25	1.59	< 0.2	25	120	< 0.5	2	0.48	< 0.5	12	35	57	2.99	10	< 1	0.13	20	0.52	397
12579	201	238	14	1.82	< 0.2	< 5	160	< 0.5	2	0.58	0.5	16	41	55	3.15	10	< 1	0.14	20	0.69	406
12580	201	238	12	2.39	< 0.2	25	80	< 0.5	< 2	0.30	< 0.5	15	44	37	3.32	10	< 1	0.09	20	0.66	384

092536

CERTIFICATION :



# Chemex Labs Ltd.

Analytical Chemists \* Geochemists \* Registered Assayers  
212 BROOKSBANK AVE., NORTH VANCOUVER,  
BRITISH COLUMBIA, CANADA V7J-2C1  
PHONE (604) 984-0221

UNITED KENO HILL MINES LIMITED

409 BLACK ST.  
WHITEHORSE, YUKON  
Y1A 2N2

Project : DWA/P/S  
Comments:

Page No. -B  
Tot. Pages: 4  
Date : 17-SEP-87  
Invoice # : I-8720429  
P.O. # : NONE

## CERTIFICATE OF ANALYSIS A8720429

SAMPLE DESCRIPTION	PREP CODE		Mo	Na	Ni	P	Pb	Sb	Se	Sr	Ti	Tl	U	V	W	Zn
			ppm	%	ppm	ppm	ppm	ppm	ppm	ppm	%	ppm	ppm	ppm	ppm	ppm
12577	201	238	2	0.01	33	880	< 2	< 5	20	28	0.17	< 10	< 10	104	< 5	91
12578	201	238	< 1	0.01	37	1380	18	< 5	< 10	28	0.15	< 10	< 10	96	< 5	112
12579	201	238	< 1	0.02	39	1540	8	< 5	10	33	0.20	< 10	< 10	103	< 5	79
12580	201	238	< 1	0.01	36	530	12	< 5	10	25	0.18	< 10	< 10	85	< 5	95

CERTIFICATION :



## CERTIFICATE OF QUALIFICATIONS

I, Dennis J. Ouellette, with business address

United Keno Hill Mines Limited  
409 Black Street  
Whitehorse, Yukon  
Y1A 2N2

do hereby certify that:

1. I am a practicing geologist.
2. I hold a Bachelor of Science (Specialization) Degree (1984) in Geology from Brandon University.
3. I have been working in the field of mineral exploration since May, 1977.
4. I am a member of the Geological Association of Canada.
5. This report, entitled "Geological and Geochemical Report on the DWA Claim Group," is based on work done on the property during August, 1987.
6. I have not received, nor do I expect to receive, any interest, either directly or indirectly, in the property concerned in this report.

Respectfully submitted,



Dennis J. Ouellette, B.Sc.

03253