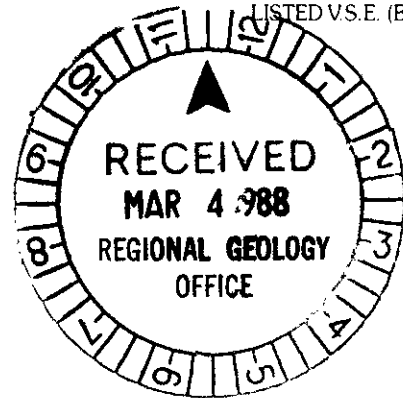


BARYTEX RESOURCES CORP.

305 - 535 Thurlow Street
Vancouver, B.C.
Canada V6E 3L2

Telephone: (604) 687-7981
Facsimile: (604) 687-1241

LISTED V.S.E. (BTX)



February 26th, 1988

Dr. J. Morin
Manager, Exploration & Geological Division
Department of Indian Affairs & Northern Development
200 Range Road
Whitehorse, Yukon Y1A 3V1

Dear Dr. Morin:

Re: BARB (Matt Berry) Property, Watson Lake, M. D.

As work done during 1987 did not qualify for assessment credit your Department may not be aware that we are continuing to explore this mineral deposit.

Approximately \$60,000 was expended in line cutting, a magnetic survey and a multi-element geochemical soil survey.

The enclosed map summarizes the results of the soil survey. Not shown are the interesting arsenic values which tend to coincide with the lead-zinc-silver anomaly to the south.

You may wish to note in "Yukon Exploration - 1987" that work of this nature was conducted.

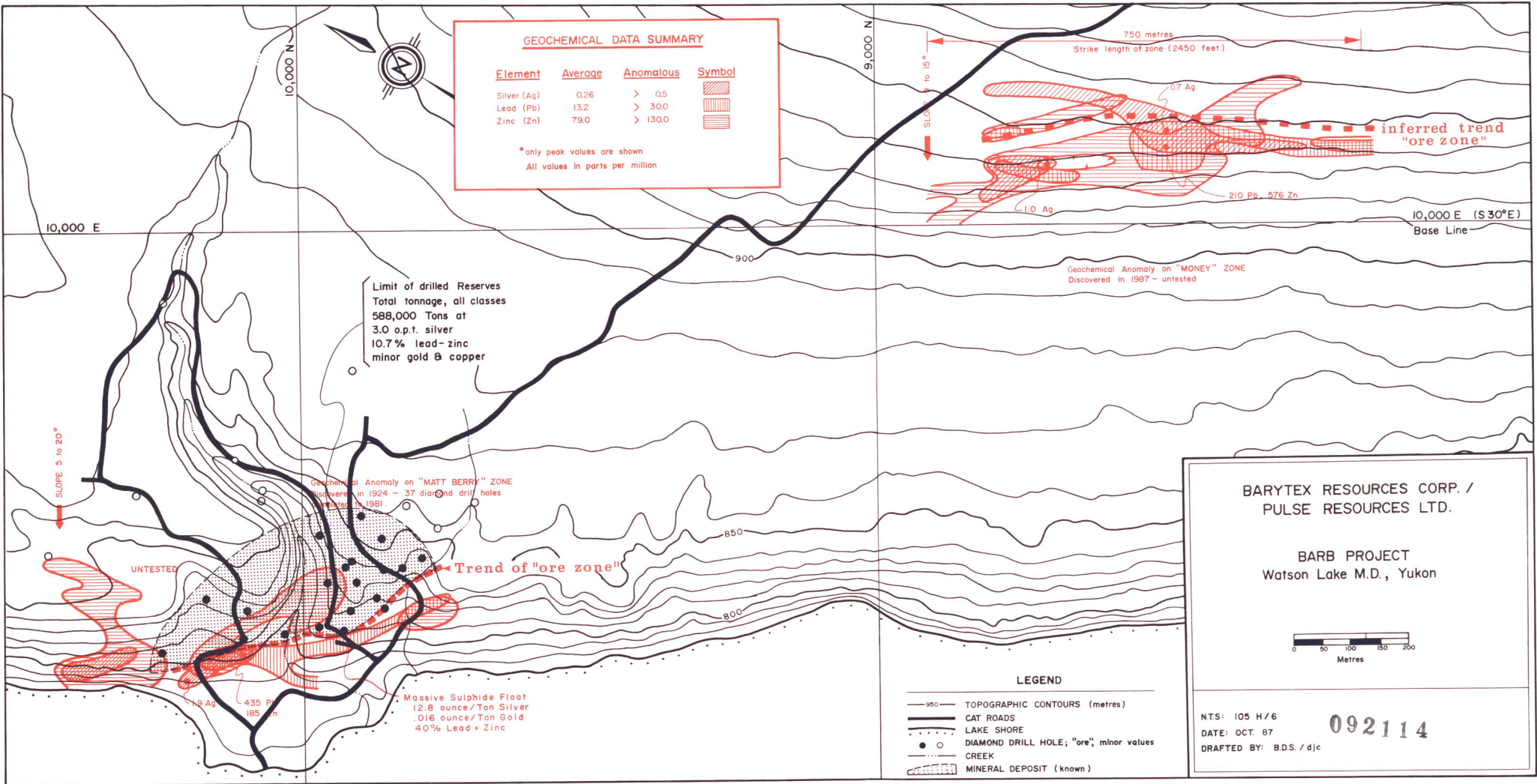
Yours truly,

BARYTEX RESOURCES CORP.

H. S. Aikins
President

HSA:mlp
encls.

092114



GEOCHEMICAL DATA SUMMARY

Element	Average	Anomalous	Symbol
Silver (Ag)	0.26	> 0.5	
Lead (Pb)	13.2	> 300	
Zinc (Zn)	79.0	> 1300	

* only peak values are shown
All values in parts per million

Limit of drilled Reserves
Total tonnage, all classes
588,000 Tons at
3.0 o.p.t. silver
10.7% lead-zinc
minor gold & copper

Geochemical Anomaly on "MATT BERRY" ZONE
Discovered in 1924 - 37 diamond drill holes
in 1981.

Geochemical Anomaly on "MONEY" ZONE
Discovered in 1987 - untested

Massive Sulphide Float
12.8 ounce/Ton Silver
0.16 ounce/Ton Gold
40% Lead + Zinc

- LEGEND**
- 950 TOPOGRAPHIC CONTOURS (metres)
 - CAT ROADS
 - LAKE SHORE
 - DIAMOND DRILL HOLE; "ore", minor values
 - CREEK
 - MINERAL DEPOSIT (known)

**BARYTEX RESOURCES CORP. /
PULSE RESOURCES LTD.**

BARB PROJECT
Watson Lake M.D., Yukon

0 50 100 150 200
Metres

NTS: 105 H/6
DATE: OCT. 87
DRAFTED BY: B.D.S. / djc

092114