

MAP NO.

ASSESSMENT REPORT X  
PROSPECTUS  
CONFIDENTIAL X  
OPEN FILE

DOCUMENT NO.:

091997

MINING DISTRICT:

WHITEHORSE

TYPE OF WORK:

Geological, Geochemistry

115 H 4

REPORT FILED UNDER: United Keno Hill Mines

DATE PERFORMED: July 30, 1987

DATE FILED: January 15, 1988

LOCATION: LAT.: 61°06'N

AREA: Twelfth of July Creek

LONG.: 137°36'W

VALUE \$: 1800.00

CLAIM NAME & NO.: RUBY 29-34 YA95693-YA95698

WORK DONE BY: L. Walton

WORK DONE FOR: United Keno Hill Mines

DATE TO GOOD STANDING

REMARKS: #31 RUBY




United Keno Hill Mines Ltd.

Geological and Geochemical Report

on the

RUBY 29-34 claims

by

L. Walton - Geologist

N.T.S. 115H/4  
Latitude 61°06'  
Longitude 137°36'  
Dates: July 30, 1987

09 1997

This report has been examined by  
the Geological Evaluation Unit  
under Section 53 (4) Yukon Quartz  
Mining Act and is allowed as  
representation work in the amount  
of \$ 1800.00.

*J. J. Brenner*

*for* Regional Manager, Exploration and  
Geological Services for Commissioner  
of Yukon Territory.

## Table of Contents

	Page No.
1. Summary and Conclusions	3
2. Recommendations	4
3. Introduction	5
4. Location and Access	5
5. History	5
6. Property	5
7. Physiography	6
8. Regional Geology	6
a. Tectonic Setting	6
b. General Description	6
9. Detailed Geology	7
a. Rock Units	7
b. Mineralization	8
10. Geochemical Survey	9
a. General	9
b. Interpretation of Results	9
References	10
APPENDIX A: Project Costs	
APPENDIX B: Personnel and Contractors Employed	
APPENDIX C: Rock Descriptions and Assays	
APPENDIX D: Chemex Rock/Soil Sheets	

## 1. Summary and Conclusions

The RUBY 29-34 claims were staked in August, 1986 after a government open file release showed anomalous gold values in sediments from streams draining the RUBY 29-34 ridge.

The property is underlain by Paleozoic (?) hornfels schist.

Six rock samples and 25 soil samples were collected and sent to Chemex for analysis for 33 elements.

Significant Au and As anomalies were outlined on the property.

## 2. Recommendations

A baseline for a soil grid should be put in along the claim line, with stations every 25 m. Samples on the crosslines should be taken every 25 m. A more detailed soil grid should be established over the Au-As anomaly outlined by 1987 fieldwork.

### 3. Introduction

On July 30, 1987, L. Walton and J. Bains prospected and sampled the RUBY 29-34 claims. The west side of the claims covers a steep cliff; this area was not investigated. The east side of the claims consists of a moderate southeast facing slope. Rock and soil samples were sent to Chemex for analysis for 33 elements.

### 4. Location and Access

The Ruby 1-6 claims are located 40 km by air northwest of Haines Junction on N.T.S. sheet 115H/4 at latitude 61°06' and longitude 137°36' (Figure 1). The claims are situated on a ridge west of Mount Bark. Access to the property was by Trans North Turbo Air Jet Ranger 206 helicopter from Haines Junction.

### 5. History

The RUBY claims are located in the Aishihik Lake area (N.T.S. 115H). Reconnaissance geology of the Aishihik Lake area was first described by Cockfield (1928) and more recently by Tempelman-Kluit (1974). The RUBY claims were staked by United Keno Hill Mines Ltd. after a government open-file release in 1986 showed anomalous gold values in silt samples from streams draining the RUBY claims area.

There is no record of the RUBY claims being previously staked. No trenches, flagging, claim posts, pickets or other signs of previous activity were noted during 1987 fieldwork.

There are no known mineral occurrences in the vicinity of the claims. Two creeks in the area, Ruby Creek and Twelfth of July Creek, have placer claims on them. Twelfth of July Creek is a tributary of Fourth of July Creek (N.T.S. 115G/1). Fourth of July Creek has been mined intermittently since 1903. From 1978 to 1984, Fourth of July Creek produced 6,210 oz. of gold (Debicki and Gilbert, 1986).

### 6. Property

The location of the RUBY 29-34 claims is shown in Figure 2.

<u>Claim Name</u>	<u>Record Number</u>	<u>Location Date</u>	<u>Recording Date</u>	<u>Assessment work req. by</u>
Ruby 1-6	YA95666	Aug. 6/86	Aug. 8/86	Aug. 8/87
	to			
	YA95671			
Ruby 7-12	YA95672	Aug. 6/86	Aug. 8/86	Aug. 8/87



Figure 1

**UNITED KENO HILL MINES LTD.**  
**EXPLORATION DEPARTMENT**  
**WHITEHORSE — YUKON**

**RUBY CLAIMS**  
**LOCATION MAP**

*Mining District*  
*N.T.S. Sheet No.*  
*Scale 1:2,500,000*

Drawn by

Date



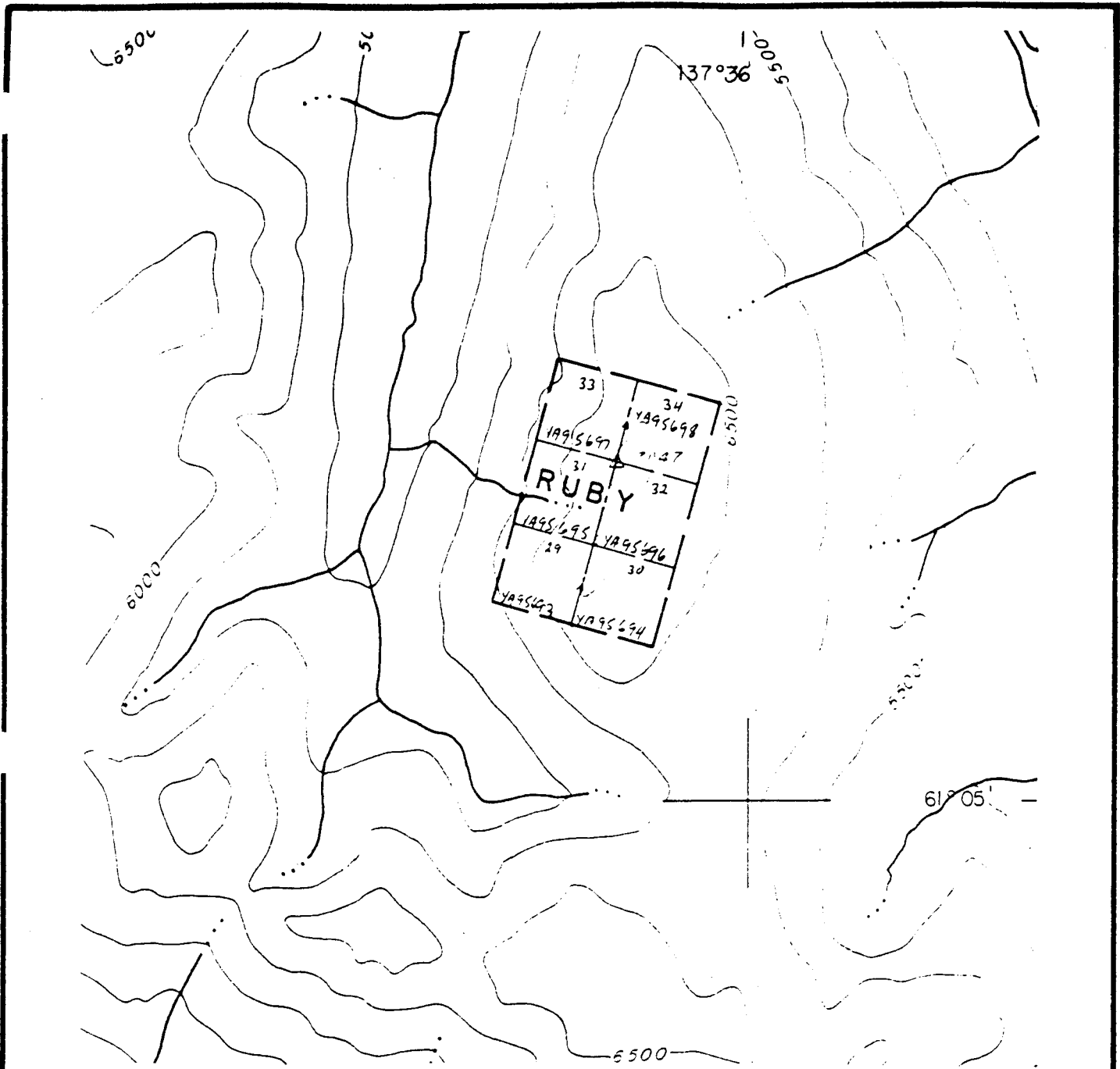


Figure 2

<b>UNITED KENO HILL MINES LTD.</b> EXPLORATION DEPARTMENT WHITEHORSE - YUKON	
RUBY 29-34 CLAIM LOCATION MAP	
<i>Mining District</i> Whitehorse <i>N.T.S. Sheet No.</i> 115H/4 <i>Scale</i> 1:31,680	
<i>Drawn by</i> L.W.	<i>Date</i> 87/11/15

	to YA95677			
Ruby 13-18	YA95678 to YA95683	Aug. 6/86	Aug. 8/86	Aug. 8/87
Ruby 19	YA95913	Aug. 8/86	Aug. 15/86	Aug. 15/87
Ruby 20-25	YA95684 to YA95689	Aug. 8/86	Aug. 8/86	Aug. 15/87
Ruby 26-28	YA95690 to YA95692	Aug. 6/86	Aug. 8/86	Aug. 15/87

## 7. Physiography

The Ruby Range physiographic province was defined by Bostock (1938). The RUBY claims are situated on a series of north-south trending ridges between West Aishihik River and Jarvis River. The ridges are separated by broad north-south to northeast-southwest trending tributaries of West Aishihik River, McKinley Creek and Lake Creek. The floors of the stream valleys are 900 m above sea level. The ridges range in elevation from 2010 m (Ruby 1-6) to 2160 m (Ruby 29-34). Ruby 13-28 and Ruby 29-34 are bordered by steep cliffs on at least one side of the claim block. The area has been glaciated and is situated near the northern limit of the St. Elias ice sheet.

The Ruby claims are situated above treeline. Vegetation consists solely of moss, lichen and alpine flowers. Dall sheep and caribou are abundant.

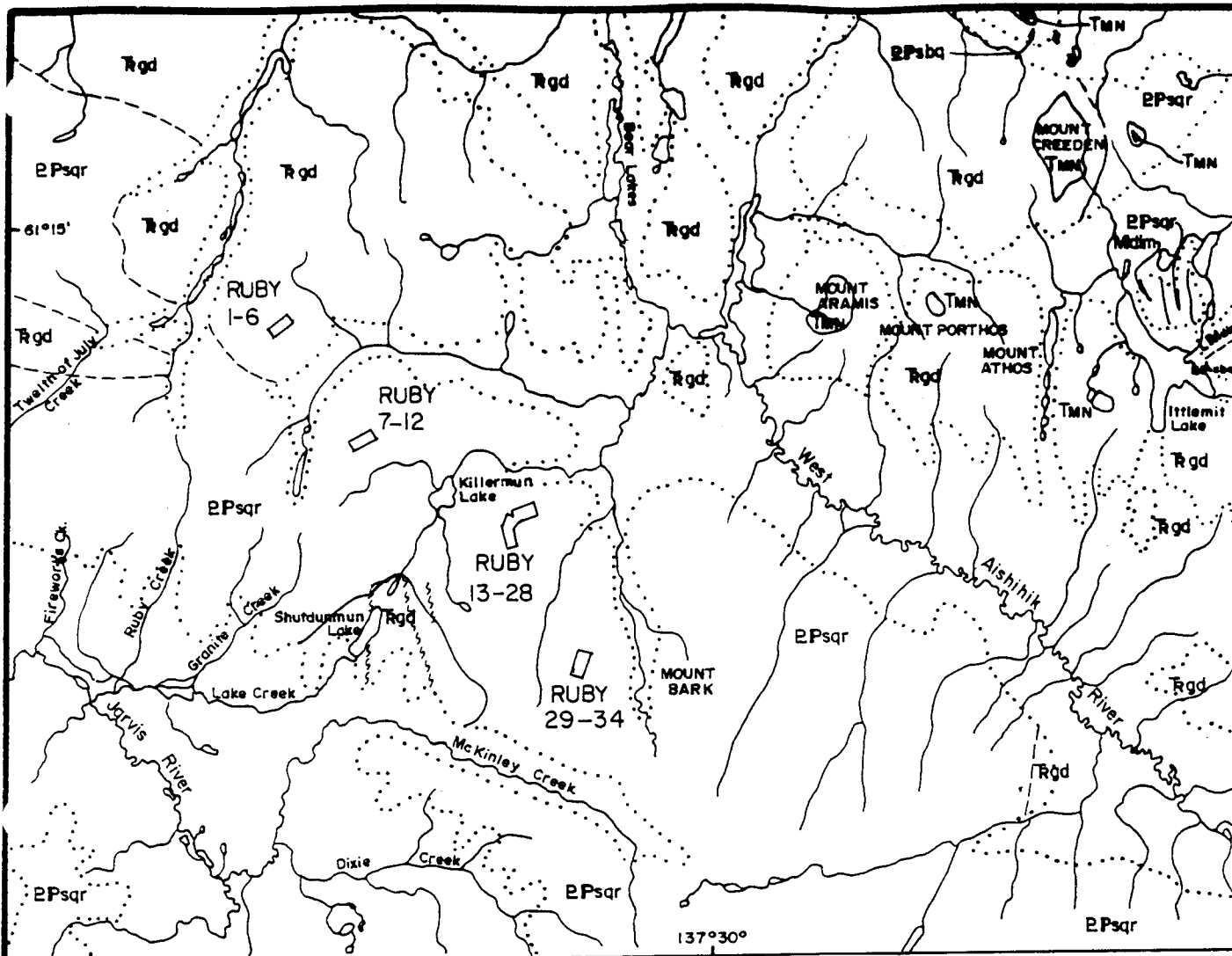
## 8. Regional Geology

### a. Tectonic Setting

The Ruby claims are situated in the Coast Plutonic Complex (Figure 3). The Coast Plutonic Complex is one of four discrete entities that formed as part of a Mesozoic arc on a foreign continental fragment now accreted to North America.

### b. General Description

Ruby 1-6 claims are underlain by the Triassic Ruby Range Batholith. The other Ruby claims (7 to 34) are underlain by Paleozoic (?) hornfels schist. The contact between the hornfels schist and the Ruby Range granodiorite is slightly south of the RUBY 1-6 claims. The Paleozoic schist has been intruded and metamorphosed by the Ruby Range Batholith.



**LEGEND**

**EOCENE**

**TMN** Mount Nansen Group volcanic rocks

**CRETACEOUS**

**LMdn** Hornblende Diorite

**TRIASSIC**

**Rgd** Ruby Range Granodiorite

**PALEOZOIC**

**EPsqr** Hornfelsed Schist

**EPsba** Biotite Schist

Figure 3

**UNITED KENO HILL MINES LTD.**  
**EXPLORATION DEPARTMENT**  
**WHITEHORSE — YUKON**

**REGIONAL GEOLOGY**  
**RUBY PROJECT**

*Mining District* **WHITEHORSE**  
*N.T.S. Sheet No.* 115-H/4  
*Scale* 1:250,000

*Drawn by* H.D.P.

*Date* 87/10/26

\*From Tempelman-Kluit (1974)

Tempelman-Kluit (1974) describes the hornfels schist as a remarkably homogeneous rock that has been overprinted on a regional scale. The schist consists of quartz, biotite, muscovite, plagioclase, chlorite, graphite and tourmaline + cordierite, staurolite and pink andalusite. The schist dips gently to the northeast.

The Ruby Range Batholith consists of heterogeneous medium-grained, equigranular hornblende and biotite granodiorite.

## 9. Detailed Geology

The RUBY 29-34 claims are underlain by hornfels schist (Unit 3). The geology and sample locations are shown in Figure 4. A description of rock types on all the RUBY claims is given below:

### a. Rock Units

#### Unit 1-Gray green metasedimentary (?) rock

This unit occurs as small blocks at the south end of the Ruby 1-6 group. The rock weathers brown, brownish-red or greenish brown. The fresh surface is light grayish green with minor very small disseminated dark blebs (smoky quartz, biotite). The rock is very fine grained and homogeneous. The fresh surface is scratched easily with a knife and is mildly to moderately calcareous. The rock contains fine grained pyrite (<1mm). Slickensides and abundant white carbonate were noted in one sample.

#### Unit 2-Mafic Dyke

Unit 2 was described in the field as mafic dyke material. It is found on Ruby 13-28 and Ruby 29-34 in talus or in rubble patches. The mafic dyke appears to crosscut the host schist unit (Unit 3). The dyke rock is distinguished from the schist by its medium to dark orange-rust weathering. It fractures into irregular to blocky slabs. The fresh surface is medium to dark grayish green and is fine grained. The rock contains abundant lath-shaped amphibole crystals and disseminated, fine grained pyrite up to 1 mm wide. The rock is weakly magnetic and non-calcareous.

#### Unit 3-Hornfels Schist

Hornfels schist underlies the Ruby 7-12, Ruby 13-28 and Ruby 29-34 claim groups. The schist is light to dark rust weathering, fine to medium grained and contains visible quartz, biotite and hornblende. When quartz is abundant, the rock is composed of light and dark layers. The quartz bands are 1-5 mm wide and are interbanded with bands of aligned biotite and hornblende. The rock is non-calcareous. When there are more mafic minerals, the rock is more homogeneous and weathers a darker rust than the

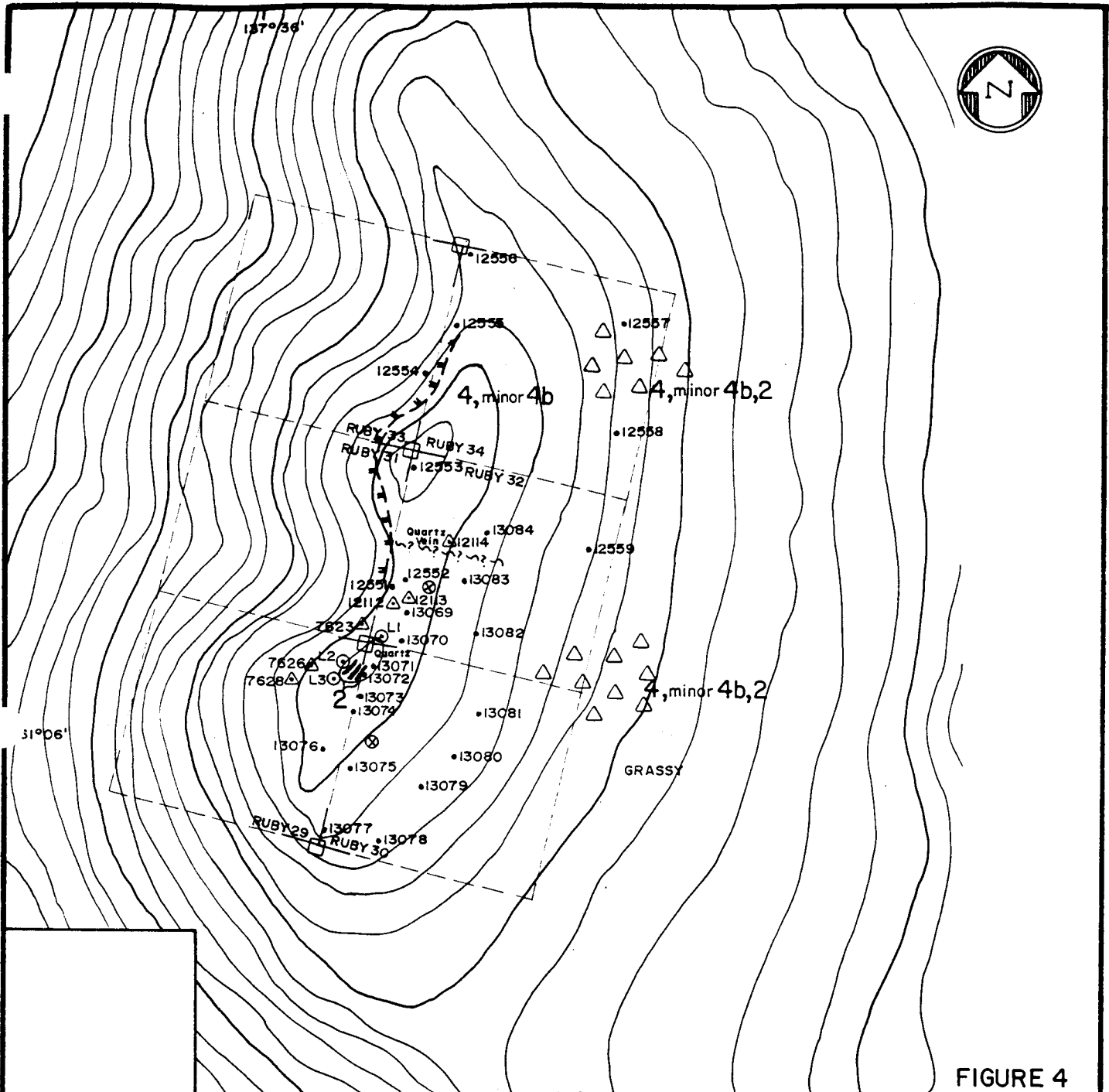


FIGURE 4

**LEGEND**

- ⋯ Outcrop
- Dyke
- ⊗ Bull Quartz Float
- Soil Sample
- △ Rock Sample
- ⊙ Geology Point
- Claim Post
- +—+—+ Cliff/Bluff
- Fault (assumed)
- △ Talus

**TRIASSIC**

- 4 Ruby Range Granodiorite
- 4a Diorite
- 4b Felsic Dyke

**PALEOZOIC**

- 3 Hornfelsed Schist

**UNKNOWN AGE**

- 2 Mafic Dyke
- 1 Gray Green Metasediments

**UNITED KENO HILL MINES LTD.**  
EXPLORATION DEPARTMENT  
WHITEHORSE — YUKON

**RUBY 29-34 CLAIMS**  
GEOLOGY AND SAMPLE LOCATION MAP

*Mining District* WHITEHORSE

*N.T.S. Sheet No.* 115-H/4

*Scale* 1:12,500

*Drawn by* H.D.P.

*Date* 87/11/05

125m 0 125m 250m

quartz rich rocks.

#### Unit 4-Ruby Range Granodiorite

Ruby Range granodiorite was found on RUBY 1-6, in minor amounts. The granodiorite is leucocratic and phaneritic, with medium grain size (1-5 mm). Quartz comprises 5-10% of the rocks and is typically light gray to clear and 1-5 mm in size. Biotite comprises 5-15% of the rock and is 1-5 mm in size. Plagioclase (?) feldspar comprises 85% of the rock.

#### Unit 4a-Diorite

Diorite underlies most of RUBY 1-6. Diorite is often found in the marginal portions of large batholiths: RUBY 1-6 is situated on the southern edge of the RUBY range batholith. The diorite is fine grained. Quartz comprises <5% of the rock, plagioclase 40-50% and amphibole (hornblende) 40-50% with trace biotite. Hornblende crystals up to 2 cm long were noted.

#### Unit 4b-Felsic Dyke

Felsic dykes were noted on RUBY 7-12 and RUBY 13-28. The dykes intrude the hornfels schist unit. On RUBY 7-12 the felsic dykes are granitic and fine grained equigranular. The rock consists of 1% biotite, 20-30% muscovite, 50-60% quartz and 20-30% feldspar.

#### Quartz Veins

Bull quartz veins occur occasionally as outcrop or as float on all the RUBY claim groups. The float fragments weather white and are easily spotted. The quartz veins appear to follow the schistosity. Most of the veins are barren and contain only transparent to milky massive quartz. Andalusite was found in some of the quartz fragments and in quartz vein outcrop. The crystals are pink, 1 cm or less wide and up to 3 cm long, and display typical square cross-sections. One larger (3 cm) subhedral crystal was noted.

Staurolite occurs as reddish brown euhedral crystals in bull quartz. The crystals are up to 2 cm long and show characteristic prismatic shape. Interpenetration twinning was noted in some samples.

Green muscovite commonly occurs with staurolite in the bull quartz veins. It is especially common at the quartz vein-wallrock boundary. It occurs in aggregate masses or in micaceous hexagonal shaped "books" up to 3 cm long.

#### b. Mineralization

A quartz vein containing angular breccia fragments was found

on RUBY 29-34. The vein is different in character than the bull quartz veins. This quartz vein contains white to transparent euhedral quartz crystals. Small vugs lined with 1-2 mm transparent quartz crystals are common. The vein contains 1-2% breccia fragments. The fragments are dark gray, featureless, soft and up to 2 cm wide. They are probably fragments of host rock schist. There are no visible sulphides. A sample of vein material (12114) ran 88 ppb Au and 1195 ppm As.

## 10. Geochemical Survey

### a. General

A reconnaissance soil sampling program was performed over the RUBY 29-34 claims. Soil samples were taken every 100 m or less along hill contours. Soil sample sites were marked with orange flagging tape. The sample pits were 6 to 20 cm deep. The soil was predominantly brown B horizon.

### b. Interpretation of Results

The results of the soil sample analysis are listed in Appendix D. The values for Au and As are plotted and contoured on Figure 5 and Figure 6.

A broad Au-As anomaly was outlined close to the baseline between Ruby 29 and Ruby 34. Au values in soils in the anomalous zones ranged from 39 to 69 ppb Au and As values ranged from 100 to 505 ppm As.

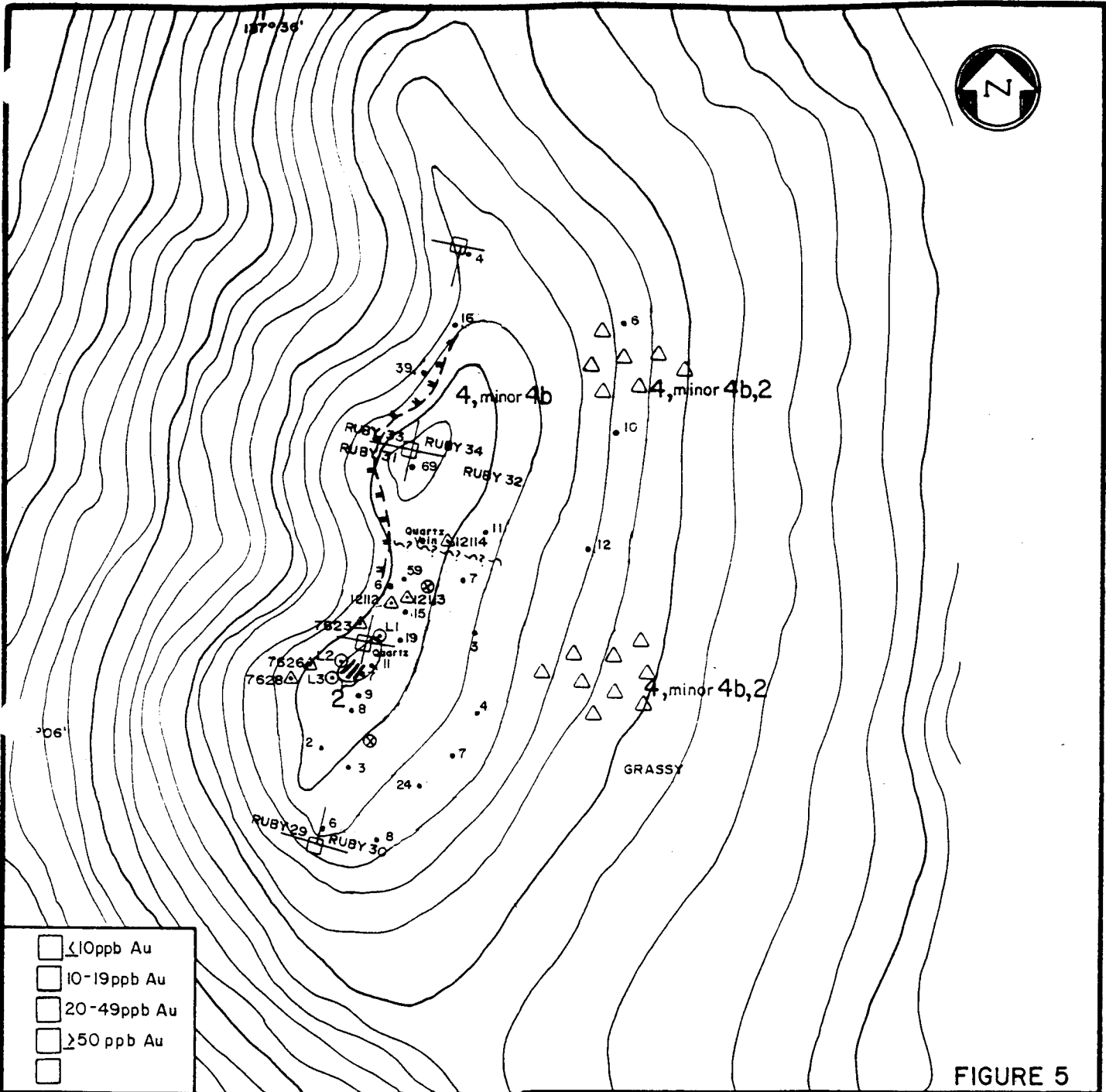


FIGURE 5

<ul style="list-style-type: none"> <li> &lt;10ppb Au</li> <li> 10-19ppb Au</li> <li> 20-49ppb Au</li> <li> &gt;50 ppb Au</li> <li></li> </ul>	<p><b>LEGEND</b></p> <ul style="list-style-type: none"> <li> Outcrop</li> <li> Dyke</li> <li> Bull Quartz Float</li> <li> Soil Sample</li> <li> Rock Sample</li> <li> Geology Point</li> <li> Claim Post</li> <li> Cliff/Bluff</li> <li> Fault(assumed)</li> <li> Talus</li> </ul>
	<p><b>TRIASSIC</b></p> <ul style="list-style-type: none"> <li> Ruby Range Granodiorite</li> <li> Diorite</li> <li> Felsic Dyke</li> </ul>
	<p><b>PALEOZOIC</b></p> <ul style="list-style-type: none"> <li> Hornfelsed Schist</li> </ul>
	<p><b>UNKNOWN AGE</b></p> <ul style="list-style-type: none"> <li> Mafic Dyke</li> <li> Gray Green Metasediments</li> </ul>

<p><b>UNITED KENO HILL MINES LTD.</b> EXPLORATION DEPARTMENT WHITEHORSE — YUKON</p>	
<p><b>RUBY 29-34 CLAIMS</b> GEOCHEMISTRY GOLD PLOT IN PPB</p>	
<p><i>Mining District</i> WHITEHORSE <i>N.T.S. Sheet No.</i> 115-H/4 <i>Scale</i> 1:12,500</p>	
<p><i>Drawn by</i> H.D.P.</p>	<p><i>Date</i> 87/11/05</p>



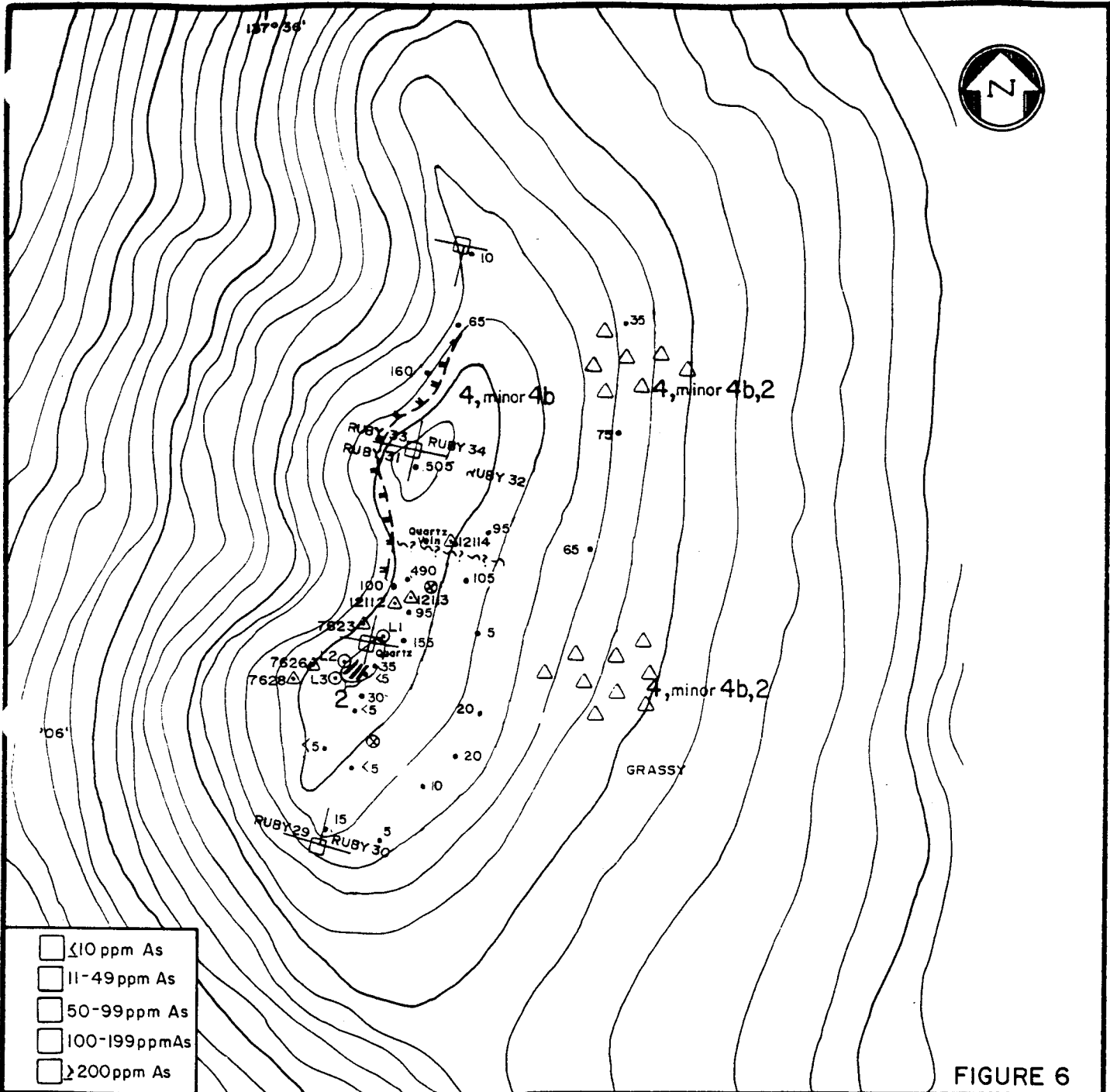


FIGURE 6

	<10 ppm As
	11-49 ppm As
	50-99 ppm As
	100-199 ppm As
	>200 ppm As

**LEGEND**

	Outcrop	<b>TRIASSIC</b>		Ruby Range Granodiorite
	Dyke			Diorite
	Bull Quartz Float			Felsic Dyke
	Soil Sample	<b>PALEOZOIC</b>		Hornfelsed Schist
	Rock Sample			Mafic Dyke
	Geology Point	<b>UNKNOWN AGE</b>		Gray Green Metasediments
	Claim Post			
	Cliff/Bluff			
	Fault (assumed)			
	Talus			

**UNITED KENO HILL MINES LTD.**  
EXPLORATION DEPARTMENT  
WHITEHORSE - YUKON

**RUBY 29-34 CLAIMS**  
GEOCHEMISTRY  
ARSENIC PLOT IN PPM

*Mining District* WHITEHORSE  
*N.T.S. Sheet No.* 115-H/4  
*Scale* 1:12,500

*Drawn by* H.D.P.

*Date* 87/11/05

## References

Bostock, H.S., 1948, Physiography of the Canadian Cordillera with special reference to the area north of the 55th parallel: Geological Survey of Canada, Memoir 247.

Cockfield, W.E., 1927, Aishihik Lake District, Yukon: Canada Department of Mines, Summary Report, 1926, Part A.

Debicki, R.L. and Gilbert, G.W., 1986, Yukon Placer Mining Industry 1983-1984: Placer Mining Section and Mining Engineering Division, D.I.A.N.D., Yukon, p. 7-17.

Tempelman-Kluit, D.J., 1974, Reconnaissance geology of Aishihik Lake, Snag and part of Stewart River map-areas, west-central Yukon: Geological Survey of Canada Paper 73-41.

## CERTIFICATE OF QUALIFICATIONS

I, Dennis R. Prince with business address of:

United Keno Hill Mines Limited  
409 Black Street  
Whitehorse, Yukon  
Y1A 2N2

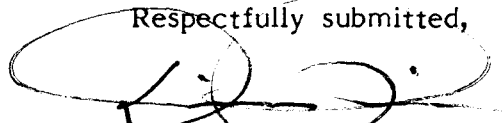
and residential address:

13 Koidern Avenue  
Whitehorse, Yukon  
Y1A 3N7  
Tel: 403-667-4720

do hereby certify that:

1. I am a practicing geologist.
2. I hold a Bachelor of Science (Honours) Degree (1970) in Geology from Memorial University of Newfoundland.
3. I am a Fellow of the Geological Association of Canada.
4. I am a member of the Professional Geoscientists Society of Yukon.
5. I have been practicing my profession for 17 years. I was employed by Falconbridge Limited as an Exploration Geologist from 1970 to 1981 and am now employed by United Keno Hill Mines Limited in the capacity of Exploration Manager.
6. This report entitled "Geological and Geochemical Report on RUBY 29-34 claims" and dated "July 30, 1987" is based on work supervised by me as an employee of United Keno Hill Mines Limited.
7. I have not received nor do I expect to receive any interest, either directly or indirectly, in the property concerned in this report or in United Keno Hill Mines Limited.

Respectfully submitted,



Dennis R. Prince,  
B.Sc. (Hon.), FGAC

## CERTIFICATE OF QUALIFICATIONS

I, Lori A. Walton with business address:

United Keno Hill Mines Limited  
409 Black Street  
Whitehorse, Yukon  
Y1A 2N2

do hereby certify that:

1. I am a practicing geologist.
2. I hold a Bachelor of Science (Specialization) Degree (1982) in Geology from the University of Alberta.
3. I hold a Graduate Gemologist Degree (1983) from the Gemological Institute of America in California, U.S.A.
4. I hold a Master of Science Degree (1987) in Economic Geology from the University of Alberta.
5. I have been working in the field of mineral exploration since May of 1980.
6. This report entitled "Geological and Geochemical Report on the RUBY 29-34 claims" is based on work done on the property on July 30, 1987.
7. I have not received nor do I expect to receive any interest, either directly or indirectly, in the property concerned in this report.

Respectfully submitted,



Lori A. Walton,  
M.Sc., G.G.

## APPENDIX A

### Project Costs

Salaries	\$2327.47
Hiring Expenses	56.31
Office Expenses	153.46
Geological Equipment	15.21
Camp Operation	
Equipment	108.49
Food	358.97
Fuel	3.99
Transport/Freight	4.69
Lodging	202.85
Assaying	930.93
Transport	49.76
Aircraft	
Helicopter	1498.58
Vehicles	4.94
Air Photography	
Contract Labor	13.24
Company Equipment	6.37
Total	\$5735.26

## APPENDIX B

### Personnel and Contractors Employed

#### Geologist

Lori Walton  
409 Black Street  
Whitehorse, Yukon  
Y1A 2N2

#### Assistant

Jeff Bain  
60 Woodland Avenue  
Kitchener, Ontario  
N2M 3G7

#### Helicopter Support

Trans North Turbo Air  
Haines Junction, Yukon

#### Geochemical Analysis

Chemex Labs Ltd.  
212 Brooksbank Ave.  
North Vancouver, B.C.  
Canada  
V7J 2C1





# Chemex Labs Ltd.

Analytical Chemists \* Geochemists \* Registered Assayers

212 BROOKSBANK AVE., NORTH VANCOUVER,  
BRITISH COLUMBIA, CANADA V7J-2C1

PHONE (604) 984-0221

TRINITATED KENO HILL MINES LIMITED

409 BLACK ST.  
WHITEHORSE, YUKON  
Y1A 2N2

Project : RUB4/REC/R/G  
Comments:

Page No. -A  
Tot. P: 1  
Date 3-SEP-87  
Invoice # : I-8719650  
P.O. # : NONE

RUBY 29-34 Rock Samples

## CERTIFICATE OF ANALYSIS A8719650

SAMPLE DESCRIPTION	PREP CODE		Au NAA	Al	Ag	As	Ba	Be	Bi	Ca	Cd	Co	Cr	Cu	Fe	Ga	Hg	K	La	Mg	Mn
			ppb	%	ppm	ppm	ppm	ppm	ppm	%	ppm	ppm	ppm	ppm	%	ppm	ppm	%	ppm	%	ppm
7626	205	238	3	1.04	< 0.2	< 5	120	< 0.5	< 2	0.08	< 0.5	7	221	9	1.47	< 10	< 1	0.35	< 10	0.40	181
7627	205	238	1	2.85	< 0.2	20	300	< 0.5	< 2	1.44	< 0.5	25	183	31	3.67	< 10	1	0.84	< 10	2.25	719
7628	205	238	2	3.86	< 0.2	5	590	< 0.5	2	2.33	< 0.5	26	132	24	4.15	< 10	3	1.62	< 10	2.57	592

CERTIFICATION :





# Chemex Labs Ltd.

Analytical Chemists • Geochemists • Registered Assayers

212 BROOKSBANK AVE., NORTH VANCOUVER,  
BRITISH COLUMBIA, CANADA V7J-2C1

PHONE (604) 984-0221

THE UNITED KENO HILL MINES LIMITED

409 BLACK ST.  
WHITEHORSE, YUKON  
Y1A 2N2

Project: RUB4/REC/R/G

Comments:

Page No. -B  
Tot. Pgs.  
Date 3-SEP-87  
Invoice # I-8719650  
P.O. # NONE

RUBY 29-34 Rock Samples

## CERTIFICATE OF ANALYSIS A8719650

SAMPLE DESCRIPTION	PREP CODE		Mo	Na	Ni	P	Pb	Sb	Se	Sr	Ti	Tl	U	V	W	Zn
			ppm	%	ppm	ppm	ppm	ppm	ppm	ppm	%	ppm	ppm	ppm	ppm	ppm
7626	205	238	< 1	0.02	13	240	< 2	< 5	< 10	8	0.05	< 10	< 10	43	< 5	14
7627	205	238	< 1	0.22	105	1370	22	< 5	< 10	119	0.30	< 10	< 10	86	< 5	86
7628	205	238	< 1	0.38	55	1730	8	< 5	< 10	248	0.29	< 10	< 10	123	< 5	69

CERTIFICATION :



# Chemex Labs Ltd.

Analytical Chemists • Geochemists • Registered Assayers

212 BROOKSBANK AVE., NORTH VANCOUVER,  
BRITISH COLUMBIA, CANADA V7J-2C1

PHONE (604) 984-0221

UNITED KENO HILL MINES LIMITED

109 BLACK ST.  
WHITEHORSE, YUKON  
Y1A 2N2

Project: RUBY/R.P.

Comments:

Page No: 1-A  
Tot. Pa: 1  
Date: 5-OCT-87  
Invoice #: I-8720251  
P.O. #: NONE

RUBY 29-34 Rock Samples

## CERTIFICATE OF ANALYSIS A8720251

SAMPLE DESCRIPTION	PREP CODE		Au NAA	Al	Ag	As	Ba	Be	Bi	Ca	Cd	Co	Cr	Cu	Fe	Ga	Hg	K	La	Mg	Mn
			ppb	%	ppm	ppm	ppm	ppm	ppm	ppm	%	ppm	ppm	ppm	ppm	%	ppm	ppm	%	ppm	%
12101	205	238	29	1.28	0.2	< 5	440	< 0.5	< 2	1.00	< 0.5	9	16	12	3.43	10	< 1	0.22	10	0.84	293
12102	205	238	4	0.14	0.2	< 5	10	< 0.5	< 2	0.14	< 0.5	< 1	162	3	0.25	< 10	< 1	< 0.01	< 10	0.03	26
12103	205	238	< 1	2.87	0.2	< 5	610	< 0.5	< 2	1.08	< 0.5	19	25	20	4.30	20	< 1	0.06	10	2.35	588
12104	205	238	< 1	3.79	0.2	< 5	40	< 0.5	2	10.25	< 0.5	11	95	10	2.65	10	< 1	0.11	< 10	1.59	646
12105	205	238	< 1	4.18	0.2	< 5	80	< 0.5	< 2	2.50	< 0.5	20	172	29	3.23	20	< 1	0.03	< 10	2.73	433
12106	205	238	< 1	1.03	0.2	< 5	710	< 0.5	< 2	0.73	< 0.5	7	38	59	2.32	10	< 1	0.46	10	0.43	179
12107	205	238	< 1	6.26	0.2	< 5	90	0.5	< 2	4.54	0.5	9	57	54	2.07	< 10	< 1	0.03	< 10	0.23	171
12108	205	238	< 1	0.42	0.2	< 5	90	< 0.5	< 2	0.18	< 0.5	4	74	7	0.38	< 10	1	0.13	< 10	0.10	268
12109	205	238	< 1	0.07	0.2	< 5	< 10	< 0.5	< 2	0.02	< 0.5	< 1	155	3	0.27	< 10	1	< 0.01	< 10	0.03	39
12110	205	238	< 1	2.98	0.2	< 5	660	0.5	< 2	0.14	0.5	13	168	71	4.45	20	< 1	1.50	10	1.20	557
12111	205	238	3	1.93	0.2	5	60	1.5	< 2	0.03	< 0.5	7	114	8	2.23	< 10	< 1	0.16	< 10	0.91	670
12112 RUBY	205	238	50	1.52	0.2	475	100	< 0.5	< 2	0.09	< 0.5	6	86	59	3.12	< 10	< 1	0.26	20	0.50	171
12113 RUBY	205	238	< 1	0.08	0.2	20	10	< 0.5	< 2	0.05	< 0.5	< 1	142	3	0.33	< 10	1	0.03	< 10	0.01	28
12114 RUBY	205	238	88	0.12	0.2	1195	20	< 0.5	< 2	0.01	< 0.5	< 1	123	6	0.76	< 10	1	0.07	< 10	0.02	25
12126	205	238	< 1	1.32	0.2	10	710	< 0.5	< 2	1.22	< 0.5	7	55	12	1.87	< 10	< 1	0.39	10	0.61	199
12127	205	238	< 1	0.02	0.2	10	< 10	< 0.5	< 2	0.02	< 0.5	< 1	170	2	0.17	< 10	1	< 0.01	< 10	< 0.01	18

CERTIFICATION :



# Chemex Labs Ltd.

Analytical Chemists • Geochemists • Registered Assayers

112 BROOKSBANK AVE., NORTH VANCOUVER,  
BRITISH COLUMBIA, CANADA V7J-1C1

PHONE (604) 984-0221

UNITED KENO HILL MINES LIMITED

109 BLACK ST.  
WHITEHORSE, YUKON  
Y1A 2N2

Project: RUBY/R.P.  
Comments:

Page No 1-B  
Tot. Pa  
Date 5-OCT-87  
Invoice 1-8720251  
P.O. # NONE

RUBY 29-34 Rock Samples

## CERTIFICATE OF ANALYSIS A8720251

SAMPLE DESCRIPTION	PREP CODE		Mo	Na	Ni	P	Pb	Sb	Se	Sr	Ti	Tl	U	V	W	Zn
			ppm	%	ppm	ppm	ppm	ppm	ppm	ppm	ppm	%	ppm	ppm	ppm	ppm
12101	205	238	< 1	0.09	< 1	1640	4	< 5	< 10	42	0.17	< 10	< 10	70	< 5	76
12102	205	238	< 1	< 0.01	< 1	20	< 2	< 5	< 10	14	< 0.01	< 10	< 10	2	< 5	3
12103	205	238	< 1	0.10	23	1350	12	< 5	< 10	111	0.27	< 10	< 10	33	< 5	78
12104	205	238	< 1	< 0.01	2	440	< 2	< 5	< 10	149	0.09	< 10	< 10	80	< 5	38
12105	205	238	< 1	0.38	57	830	4	< 5	< 10	262	0.25	< 10	< 10	46	< 5	72
12106	205	238	< 1	0.11	< 1	1480	< 2	< 5	< 10	55	0.14	< 10	< 10	56	< 5	35
12107	205	238	2	0.31	16	1260	8	< 5	< 10	602	0.07	< 10	< 10	25	< 5	16
12108	205	238	< 1	0.02	24	500	8	< 5	< 10	10	< 0.01	< 10	< 10	2	< 5	13
12109	205	238	< 1	< 0.01	3	20	2	< 5	< 10	1	< 0.01	< 10	< 10	2	< 5	2
12110	205	238	< 1	0.04	37	570	8	< 5	< 10	12	0.33	< 10	< 10	155	< 5	95
12111	205	238	< 1	0.02	25	50	< 2	< 5	< 10	5	0.05	< 10	< 10	34	< 5	34
12112 RUBY	205	238	< 1	< 0.01	18	460	4	< 5	< 10	8	< 0.01	< 10	< 10	43	< 5	33
12113	205	238	< 1	< 0.01	2	190	< 2	< 5	< 10	1	< 0.01	< 10	< 10	2	< 5	1
12114 29-34	205	238	< 1	< 0.01	3	100	< 2	< 5	< 10	7	< 0.01	< 10	< 10	3	< 5	7
12126	205	238	< 1	0.19	1	1500	< 2	< 5	< 10	82	0.11	< 10	< 10	55	< 5	42
12127	205	238	< 1	< 0.01	1	20	< 2	< 5	< 10	1	< 0.01	< 10	< 10	1	< 5	1

CERTIFICATION :



# Chemex Labs Ltd.

Analytical Chemists \* Geochemists \* Registered Assayers  
 212 BROOKSBANK AVE., NORTH VANCOUVER,  
 BRITISH COLUMBIA, CANADA V7J-1C1  
 PHONE (604) 984-0221

T NITED KENO HILL MINES LIMITED

409 BLACK ST.  
 WHITEHORSE, YUKON  
 Y1A 2N2

Project : RUBY/P/S  
 Comments :

Page No -A  
 Tot. Pages 5  
 Date : 14-SEP-87  
 Invoice # : I-8719944  
 P.O. # : NONE

RUBY 29-34 Soil Samples

## CERTIFICATE OF ANALYSIS A8719944

SAMPLE DESCRIPTION	PREP CODE	Au NAA ppb	Al %	Ag ppm	As ppm	Ba ppm	Be ppm	Bi ppm	Ca %	Cd ppm	Co ppm	Cr ppm	Cu ppm	Fe %	Ga ppm	Hg ppm	K %	La ppm	Mg %	Mn ppm
12540	201 238	9	2.38	0.4	5	180	< 0.5	< 2	0.41	< 0.5	17	51	48	3.42	< 10	< 1	0.39	10	0.91	557
12541	201 238	17	2.49	< 0.2	< 5	220	< 0.5	< 2	0.51	< 0.5	16	58	41	3.17	< 10	< 1	0.39	10	1.01	444
12542	201 238	49	2.01	0.4	305	200	< 0.5	< 2	0.35	< 0.5	18	47	47	3.95	< 10	< 1	0.42	10	0.82	476
12543	201 238	35	2.32	0.2	195	220	< 0.5	< 2	0.36	< 0.5	18	64	46	3.62	< 10	< 1	0.39	10	0.94	466
12544	201 238	9	1.93	0.2	55	210	< 0.5	< 2	0.40	< 0.5	15	55	34	2.92	< 10	1	0.46	10	0.83	404
12545	201 238	16	2.40	0.2	20	210	< 0.5	< 2	0.41	< 0.5	17	58	49	3.62	< 10	< 1	0.44	10	0.92	550
12546	201 238	101	1.99	0.2	5	170	< 0.5	< 2	0.43	< 0.5	15	48	35	3.17	< 10	1	0.32	10	0.81	467
12547	201 238	15	2.22	0.2	25	150	< 0.5	< 2	0.41	< 0.5	17	50	49	3.50	< 10	< 1	0.25	10	0.89	499
12548	201 238	14	2.42	0.2	20	200	< 0.5	< 2	0.58	< 0.5	17	45	40	3.48	< 10	< 1	0.30	10	0.92	533
12549	201 238	143	2.35	0.2	530	150	< 0.5	< 2	0.43	< 0.5	17	52	49	3.73	< 10	< 1	0.33	10	1.05	608
12550	201 238	5	2.18	0.2	< 5	180	< 0.5	< 2	0.48	< 0.5	18	68	47	3.39	< 10	< 1	0.27	10	1.03	528
12551	201 238	6	2.08	0.2	100	140	< 0.5	< 2	0.33	< 0.5	18	50	59	3.61	< 10	< 1	0.38	10	0.91	379
12552	201 238	59	2.47	0.2	490	190	< 0.5	< 2	0.34	< 0.5	30	61	120	4.84	< 10	< 1	0.43	10	0.99	575
12553	201 238	69	2.11	0.4	505	180	< 0.5	< 2	0.28	< 0.5	18	50	62	4.30	< 10	< 1	0.31	10	0.85	575
12554	201 238	39	2.46	0.4	160	240	< 0.5	< 2	0.36	< 0.5	24	56	81	4.31	< 10	< 1	0.44	10	1.01	461
12555	201 238	16	2.54	0.4	65	230	< 0.5	< 2	0.31	< 0.5	24	63	66	4.14	< 10	< 1	0.34	10	0.99	568
12556	201 238	4	2.07	0.4	10	210	< 0.5	< 2	0.43	< 0.5	16	50	53	3.35	< 10	< 1	0.38	10	0.92	406
12557	201 238	6	3.07	0.2	35	300	< 0.5	< 2	0.35	< 0.5	20	87	61	4.40	< 10	1	0.72	10	1.33	557
12558	201 238	10	2.50	0.4	75	280	< 0.5	< 2	0.23	< 0.5	21	66	66	4.22	< 10	< 1	0.50	10	1.03	507
12559	201 238	12	2.85	0.4	65	240	< 0.5	< 2	0.22	< 0.5	17	69	72	4.56	< 10	< 1	0.52	10	1.11	471
12560	203 238	5	1.36	0.2	< 5	60	< 0.5	< 2	0.84	< 0.5	16	99	43	2.64	< 10	< 1	0.14	< 10	0.82	349
12561	203 238	4	1.03	0.2	< 5	40	< 0.5	< 2	0.66	< 0.5	7	86	24	2.17	< 10	< 1	0.09	< 10	0.55	316
12562	203 238	5	1.61	0.2	< 5	40	< 0.5	< 2	0.93	< 0.5	10	79	32	2.12	< 10	< 1	0.14	< 10	1.00	378
13007	201 238	8	2.23	0.4	25	280	< 0.5	< 2	0.28	< 0.5	12	58	38	3.18	< 10	< 1	0.62	10	0.85	317
13008	201 238	4	2.61	0.4	5	360	< 0.5	< 2	0.27	0.5	17	65	38	3.43	< 10	< 1	0.88	10	0.96	444
13009	201 238	8	2.79	< 0.2	35	390	< 0.5	< 2	0.29	< 0.5	17	79	47	3.90	10	< 1	0.93	10	1.02	536
13010	217 238	2	1.39	< 0.2	< 5	70	< 0.5	< 2	1.05	1.0	12	126	28	3.24	10	1	0.11	30	0.71	512
94428	203 238	6	1.67	< 0.2	< 5	60	< 0.5	< 2	1.00	< 0.5	15	96	46	2.50	< 10	< 1	0.16	10	1.07	423

CERTIFICATION :

*BC 8*



# Chemex Labs Ltd.

Analytical Chemists • Geochemists • Registered Assayers

212 BROOKSBANK AVE., NORTH VANCOUVER,  
BRITISH COLUMBIA, CANADA V7J-2C1

PHONE (604) 984-0221

T NITED KENO HILL MINES LIMITED

409 BLACK ST.  
WHITEHORSE, YUKON  
Y1A 2N2

Project : RUBY/P/S

Comments:

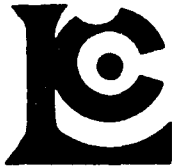
Page No -B  
Tot. Pages 3  
Date : 14-SEP-87  
Invoice # : I-8719944  
P.O. # : NONE

RUBY 29-34 Soil Samples

## CERTIFICATE OF ANALYSIS A8719944

SAMPLE DESCRIPTION	PREP CODE	Mo ppm	Na %	Ni ppm	P ppm	Pb ppm	Sb ppm	Se ppm	Sr ppm	Ti %	Tl ppm	U ppm	V ppm	W ppm	Zn ppm
12540	201 238	< 1	0.02	36	670	8	< 5	< 10	36	0.20	< 10	< 10	91	< 5	76
12541	201 238	< 1	0.02	33	940	4	< 5	< 10	45	0.20	< 10	< 10	88	< 5	76
12542	201 238	< 1	0.01	43	880	12	< 5	< 10	27	0.13	< 10	< 10	83	< 5	96
12543	201 238	< 1	0.01	42	780	4	< 5	< 10	36	0.17	< 10	< 10	90	< 5	86
12544	201 238	< 1	0.02	32	890	8	< 5	< 10	32	0.17	< 10	< 10	80	< 5	70
12545	201 238	< 1	0.02	41	920	6	< 5	< 10	35	0.21	< 10	< 10	99	< 5	89
12546	201 238	< 1	0.02	34	740	8	< 5	< 10	35	0.19	< 10	< 10	84	< 5	70
12547	201 238	< 1	0.02	34	1000	12	< 5	< 10	35	0.18	< 10	< 10	84	< 5	97
12548	201 238	< 1	0.05	35	1030	8	< 5	< 10	51	0.20	< 10	< 10	85	< 5	97
12549	201 238	< 1	0.03	40	1030	4	< 5	< 10	45	0.18	< 10	< 10	96	< 5	93
12550	201 238	< 1	0.03	39	1100	8	< 5	< 10	56	0.17	< 10	< 10	89	< 5	90
12551	201 238	< 1	0.01	43	670	4	< 5	< 10	27	0.14	< 10	< 10	100	< 5	56
12552	201 238	< 1	0.02	79	1130	8	< 5	< 10	32	0.13	< 10	< 10	103	< 5	76
12553	201 238	< 1	0.02	47	1020	12	< 5	< 10	39	0.10	< 10	< 10	87	< 5	67
12554	201 238	< 1	0.02	50	1010	8	< 5	< 10	33	0.14	< 10	< 10	108	< 5	65
12555	201 238	< 1	0.01	60	900	10	< 5	< 10	30	0.15	< 10	< 10	105	< 5	69
12556	201 238	< 1	0.02	41	950	8	< 5	< 10	31	0.17	< 10	< 10	94	< 5	50
12557	201 238	< 1	0.02	58	1010	10	< 5	< 10	44	0.17	< 10	< 10	125	< 5	81
12558	201 238	< 1	0.01	57	750	8	< 5	< 10	22	0.14	< 10	< 10	109	< 5	66
12559	201 238	< 1	0.01	52	1020	8	< 5	< 10	24	0.14	< 10	< 10	120	< 5	74
12560	203 238	< 1	0.14	22	440	4	< 5	< 10	58	0.14	< 10	< 10	79	< 5	47
12561	203 238	< 1	0.15	12	370	2	< 5	< 10	59	0.12	< 10	< 10	69	< 5	36
12562	203 238	< 1	0.16	18	460	2	< 5	< 10	93	0.14	< 10	< 10	62	< 5	34
13007	201 238	< 1	0.01	32	930	2	< 5	< 10	30	0.15	< 10	< 10	93	< 5	63
13008	201 238	< 1	0.01	36	890	6	< 5	< 10	25	0.20	< 10	< 10	104	< 5	78
13009	201 238	< 1	0.01	46	810	< 2	5	< 10	24	0.23	< 10	< 10	123	5	86
13010	217 238	< 1	0.16	18	510	< 2	5	< 10	80	0.18	< 10	< 10	125	5	50
94428	203 238	< 1	0.14	27	490	< 2	5	< 10	92	0.16	< 10	< 10	77	< 5	35

CERTIFICATION :



# Chemex Labs Ltd.

Analytical Chemists • Geochemists • Registered Assayers

212 BROOKSBANK AVE., NORTH VANCOUVER,  
BRITISH COLUMBIA, CANADA V7J-2C1

PHONE (604) 984-0221

Tc UNITED KENO HILL MINES LIMITED

409 BLACK ST.  
WHITEHORSE, YUKON  
Y1A 2N2

Project : RUB4/REC/S/G

Comments:

Page No. -A  
Tot. Pages: 1  
Date : 3-SEP-87  
Invoice # : I-8719647  
P.O. # : NONE

RUBY 29-34 Soil Samples

## CERTIFICATE OF ANALYSIS A8719647

SAMPLE DESCRIPTION	PREP CODE	Au NAA ppb	Al %	Ag ppm	As ppm	Ba ppm	Be ppm	Bi ppm	Ca %	Cd ppm	Co ppm	Cr ppm	Cu ppm	Fe %	Ga ppm	Hg ppm	K %	La ppm	Mg %	Mn ppm
13001	201 238	5	3.04	< 0.2	< 5	150	< 0.5	< 2	1.36	< 0.5	34	129	119	4.35	< 10	2	0.26	< 10	2.23	832
13002	203 238	< 1	2.66	< 0.2	< 5	180	< 0.5	< 2	1.31	< 0.5	40	136	92	3.88	< 10	1	0.43	< 10	1.95	924
13003	201 238	2	4.32	< 0.2	< 5	200	< 0.5	< 2	1.75	< 0.5	59	138	195	5.16	< 10	2	0.39	< 10	2.88	1360
13004	203 238	6	2.34	< 0.2	< 5	50	< 0.5	< 2	1.40	< 0.5	25	87	61	3.52	< 10	< 1	0.16	< 10	1.60	662
13005	201 238	9	2.94	< 0.2	50	270	< 0.5	< 2	0.30	< 0.5	28	74	73	4.67	< 10	1	0.66	10	1.23	589
13006	201 238	5	2.57	< 0.2	30	280	< 0.5	< 2	0.48	< 0.5	27	104	57	3.58	< 10	< 1	0.59	10	1.28	445
13069	201 238	15	2.92	< 0.2	95	300	< 0.5	< 2	0.44	< 0.5	29	72	83	4.87	< 10	< 1	0.81	10	1.15	659
13070	201 238	19	2.33	< 0.2	155	170	< 0.5	< 2	0.41	< 0.5	28	61	66	4.10	< 10	< 1	0.33	10	1.04	531
13071	201 238	11	2.26	< 0.2	35	150	< 0.5	< 2	0.69	< 0.5	28	65	53	3.60	< 10	1	0.33	10	1.16	582
13072	201 238	7	3.79	< 0.2	< 5	550	< 0.5	< 2	1.14	< 0.5	33	81	34	5.27	< 10	< 1	1.22	10	2.75	893
13073	201 238	9	3.46	< 0.2	30	360	< 0.5	< 2	0.80	< 0.5	29	78	63	4.91	< 10	4	0.87	10	2.13	624
13074	201 238	8	3.10	< 0.2	< 5	260	< 0.5	< 2	0.35	< 0.5	25	79	67	4.33	< 10	< 1	0.69	10	1.35	556
13075	201 238	3	2.54	< 0.2	< 5	210	< 0.5	< 2	0.31	< 0.5	20	72	48	3.81	< 10	2	0.46	10	1.09	514
13076	201 238	2	3.29	< 0.2	< 5	280	< 0.5	< 2	0.55	< 0.5	31	103	65	4.26	< 10	< 1	0.71	10	1.70	620
13077	201 238	6	2.77	< 0.2	15	240	< 0.5	< 2	0.38	< 0.5	29	68	82	4.39	< 10	3	0.66	< 10	1.24	662
13078	201 238	8	2.78	< 0.2	5	200	< 0.5	< 2	0.29	< 0.5	27	76	70	4.22	< 10	2	0.48	10	1.21	540
13079	201 238	24	2.75	< 0.2	10	230	< 0.5	< 2	0.26	< 0.5	25	69	53	4.41	< 10	2	0.65	10	1.12	509
13080	201 238	7	2.42	< 0.2	20	200	< 0.5	< 2	0.33	< 0.5	22	66	49	3.79	< 10	< 1	0.55	10	1.05	489
13081	201 238	4	2.82	< 0.2	20	250	< 0.5	< 2	0.32	< 0.5	23	71	56	4.14	< 10	1	0.52	10	1.15	526
13082	201 238	3	2.96	< 0.2	5	310	< 0.5	< 2	0.25	< 0.5	28	73	78	4.56	< 10	1	0.74	10	1.12	560
13083	201 238	7	2.78	< 0.2	105	260	< 0.5	< 2	0.34	< 0.5	22	70	52	4.24	< 10	2	0.41	10	1.11	574
13084	201 238	11	2.97	< 0.2	95	300	< 0.5	< 2	0.31	< 0.5	28	81	68	4.34	< 10	2	0.74	10	1.22	459

CERTIFICATION :



# Chemex Labs Ltd.

Analytical Chemists • Geochemists • Registered Assayers  
 212 BROOKSBANK AVE., NORTH VANCOUVER,  
 BRITISH COLUMBIA, CANADA V7J-2C1  
 PHONE (604) 984-0221

To: UNITED KENO HILL MINES LIMITED

409 BLACK ST.  
 WHITEHORSE, YUKON  
 Y1A 2N2

Project: RUB4/REC/S/G  
 Comments:

Page No. -B  
 Tot. Pgs 1  
 Date 3-SEP-87  
 Invoice #: I-8719647  
 P.O. #: NONE

RUBY 29-34 Soil Samples

## CERTIFICATE OF ANALYSIS A8719647

SAMPLE DESCRIPTION	PREP CODE		Mo	Na	Ni	P	Pb	Sb	Se	Sr	Ti	Tl	U	V	W	Zn
			ppm	%	ppm	ppm	ppm	ppm	ppm	ppm	%	ppm	ppm	ppm	ppm	ppm
13001	201	238	< 1	0.11	58	800	< 2	< 5	< 10	97	0.23	< 10	< 10	121	< 5	67
13002	203	238	< 1	0.10	64	860	< 2	< 5	< 10	94	0.22	< 10	< 10	113	< 5	59
13003	201	238	< 1	0.03	69	970	< 2	< 5	< 10	144	0.27	< 10	< 10	145	< 5	68
13004	203	238	< 1	0.12	37	640	6	< 5	< 10	110	0.20	< 10	< 10	112	< 5	63
13005	201	238	< 1	0.02	58	690	6	< 5	< 10	30	0.19	< 10	< 10	133	< 5	68
13006	201	238	< 1	0.03	69	1090	6	< 5	< 10	45	0.15	< 10	< 10	98	< 5	87
13069	201	238	< 1	0.02	81	1350	8	< 5	< 10	35	0.15	< 10	< 10	127	< 5	56
13070	201	238	< 1	0.02	60	1000	6	< 5	< 10	36	0.15	< 10	< 10	103	< 5	67
13071	201	238	< 1	0.05	78	1120	8	< 5	< 10	56	0.20	< 10	< 10	96	< 5	62
13072	201	238	< 1	0.14	36	1920	6	< 5	< 10	138	0.25	< 10	< 10	133	< 5	92
13073	201	238	< 1	0.07	55	1590	8	< 5	< 10	87	0.24	< 10	< 10	143	< 5	75
13074	201	238	< 1	0.02	61	890	2	< 5	< 10	30	0.17	< 10	< 10	124	< 5	58
13075	201	238	< 1	0.01	44	700	2	< 5	< 10	27	0.17	< 10	< 10	115	< 5	49
13076	201	238	< 1	0.03	86	1040	2	< 5	< 10	49	0.21	< 10	< 10	119	< 5	65
13077	201	238	< 1	0.01	81	1020	8	< 5	< 10	25	0.15	< 10	< 10	121	< 5	43
13078	201	238	< 1	0.02	61	760	8	< 5	< 10	29	0.16	< 10	< 10	124	< 5	66
13079	201	238	< 1	0.02	58	700	6	< 5	< 10	34	0.16	< 10	< 10	118	< 5	61
13080	201	238	< 1	0.02	53	690	8	< 5	< 10	33	0.16	< 10	< 10	105	< 5	53
13081	201	238	< 1	0.02	49	600	2	< 5	< 10	32	0.19	< 10	< 10	124	< 5	55
13082	201	238	< 1	0.01	84	850	6	< 5	< 10	25	0.17	< 10	< 10	126	< 5	48
13083	201	238	< 1	0.02	49	900	8	< 5	< 10	32	0.16	< 10	< 10	125	< 5	59
13084	201	238	< 1	0.02	70	940	4	< 5	< 10	27	0.17	< 10	< 10	123	< 5	79

CERTIFICATION : 