

ARCHER, CATHRO

& ASSOCIATES (1981) LIMITED

CONSULTING GEOLOGICAL ENGINEERS

1016-510 WEST HASTINGS STREET
VANCOUVER, B. C. V6B 1L8

(604) 688-2568

GEOLOGICAL AND GEOCHEMICAL PROGRAM

on the

TOAST PROPERTY

Toast 1-36 (YA95932-YA95967)

MT. NANSEN, YUKON

Whitehorse Mining District

NTS NTS 115I/3

Latitude 62°10'; Longitude 137°27'

By

ARCHER, CATHRO & ASSOCIATES (1981) LIMITED

November, 1987

Work done between July 12 to September 15, 1987

This report has been examined by
the Geological Evaluation Unit
under Section 53 (4) Yukon Quartz
Mining Act and is allowed as
representation work in the amount
of \$ 3,600 .

P. J. Bennett

for Regional Manager, Exploration and
Geological Services for Commissioner
of Yukon Territory.

TABLE OF CONTENTS

	<u>PAGE</u>
INTRODUCTION	1
PROPERTY, LOCATION AND ACCESS	1
PHYSIOGRAPHY AND GEOMORPHOLOGY	2
GEOLOGY	2
MINERALIZATION	2
GEOCHEMISTRY	3
DISCUSSION AND CONCLUSIONS	4

<u>NO.</u>	<u>FIGURES</u>	<u>LOCATION</u>
T-1	Compilation Map - Geology, Gold Geochemistry	Following Page 2

APPENDIX I

Statement of Author's Qualifications

INTRODUCTION

The Toast property was staked in August, 1986 by Freegold Venture, a project funded by Chevron Minerals Limited. The property was positioned to cover the source of a gold geochemical silt anomaly discovered by the Geological Survey of Canada (GSC). In April, 1987, the property was optioned to Big Creek Resources Ltd. (formerly Nordac Mining Corporation) on behalf of Big Creek Joint Venture (BCJV) which consists of Big Creek Resources Ltd. (66.7%) and Rexford Minerals Ltd. (33.3%). The 1987 program was managed by Archer, Cathro & Associates (1981) Limited with C.A. Main as Project Manager. Field personnel included J.L. Duke, F. Andersen, G. MacIntosh and M. Gazetas.

PROPERTY, LOCATION AND ACCESS

The Toast property consists of thirty-six contiguous claims registered in the name of Archer, Cathro & Associates (1981) Limited with the Whitehorse Mining Recorder as follows:

<u>Claim Name</u>	<u>Grant Numbers</u>	<u>Expiry Date</u>
Toast 1-36	YA95932-YA95967	February 15, 1989

The claims are located 62 km west of Carmacks on NTS map sheet 115I/3 at latitude 62°10' and longitude 137°27'. Access is by helicopter and the nearest road access is Freegold Venture's Tawa property, 12 km to the southeast.

PHYSIOGRAPHY AND GEOMORPHOLOGY

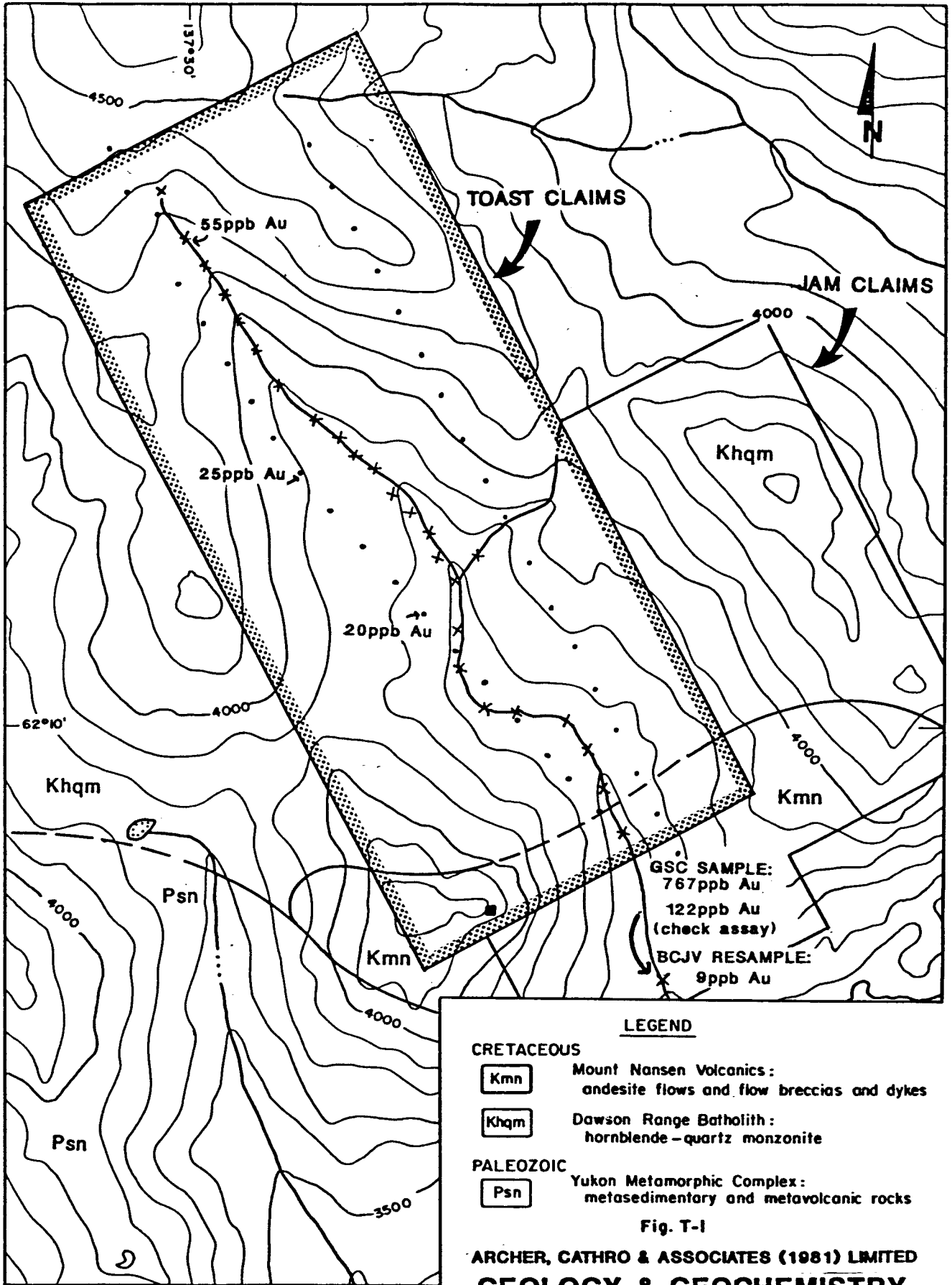
The property lies between 1150 and 1500 m above sea level on the southeast-facing slope of Tritop Mountain. Relief is moderate with little outcrop other than at ridge crests. The south-facing slopes are vegetated with spruce and poplar while the north-facing slopes are thickly covered with moss, buckbrush and stunted fir trees.

GEOLOGY

The property is underlain by part of the mid-Cretaceous Dawson Range Batholith which consists of hornblende-quartz monzonite, as shown on Figure T-1 on the following page. Later Cretaceous Mount Nansen volcanics, consisting of andesitic flows and flow breccias with related dykes, lie just off the property to the south. Paleozoic(?) Yukon Group Complex consisting of metasedimentary and metavolcanic rocks lies just off the property to the southwest.

MINERALIZATION

There is no record of previous work or mineralization on the property but Kennco Exploration Limited explored for gold in the early 1970's on a claim block 1 km to the northeast. No mineralization was found on the property by that survey.



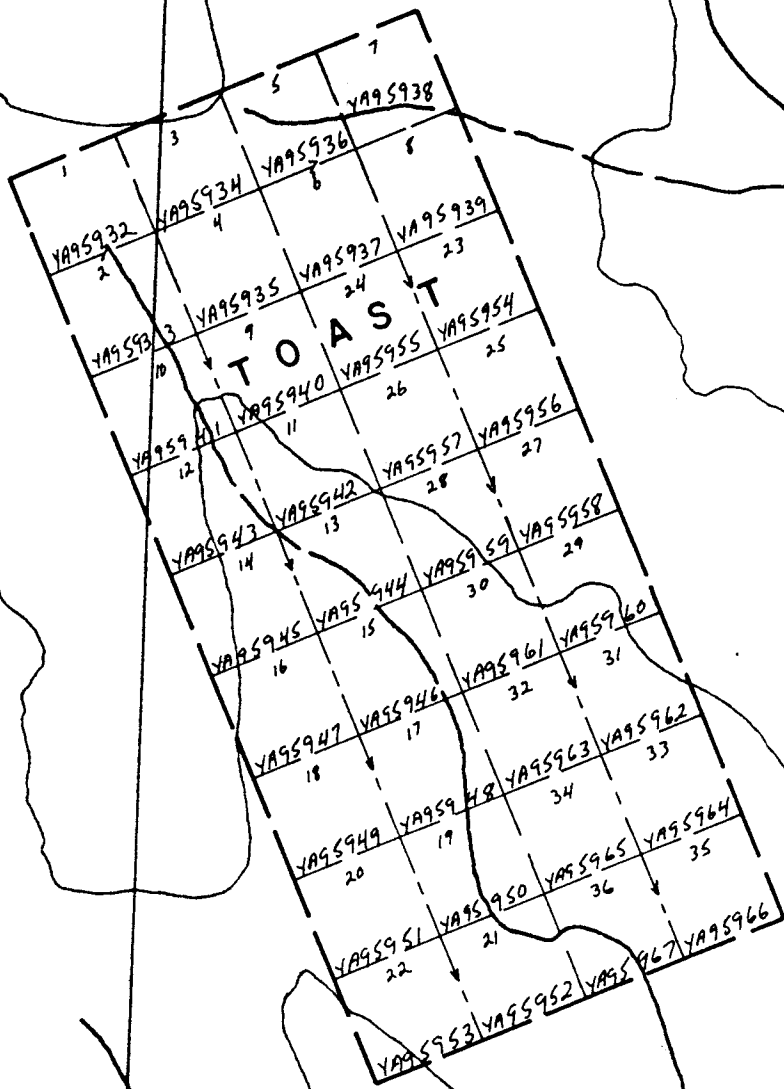
- Soil sample site
- x Silt sample site
- Rock sample site

Values below 5ppb Au are not shown.

TRITOP
PK.

6079

115 I 3



4000

A Z A

GEOCHEMISTRY

A stream sediment sample taken from the creek which bisects the Toast property returned strongly anomalous gold values (767 and 122 ppb Au) but only background values for arsenic and antimony (GSC Open File 1220 - NTS 115I). Twenty-five silt samples were taken from this drainage and from its tributaries and, apart from one anomalous value of 55 ppb Au from a silt at the head of the drainage, all samples returned values below the detection limit for gold. Thirty-seven soil samples were taken at 100 m intervals along prospecting and geological traverses which crossed the property and apart from two isolated samples with assays of 25 and 20 ppb Au, all samples returned values below the detection limit for gold.

All samples were collected in numbered kraft bags and analyzed for gold at Chemex Labs Ltd. North Vancouver, B.C. by fire assay followed by atomic absorption measurement for gold content. A portion of the original sample was digested in nitric acid and aqua regia and measured by an Inductive Coupled Plasma technique for the content of thirty-two elements. No anomalous values were noted.

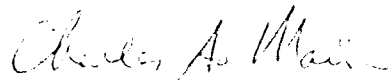
Subsequent to the return of the above results, the property was revisited and the GSC silt sample site was resampled resulting in a slightly anomalous assay of 9 ppb Au.

DISCUSSION AND CONCLUSIONS

The Toast property was staked to cover the apparent up-drainage source of a gold silt anomaly discovered during a regional survey conducted by the GSC. Resampling of silt from the anomalous drainage was unsuccessful in reproducing the anomaly. Prospecting, geological and soil sampling surveys which crossed the property only located three isolated anomalous samples, a silt with 55 ppb Au and two soils with 20 and 25 ppb Au, respectively. No other indications of gold mineralization were discovered and the property does not warrant further work.

Respectfully submitted,

ARCHER, CATHRO & ASSOCIATES (1981) LIMITED



C.A. Main, B.Sc.

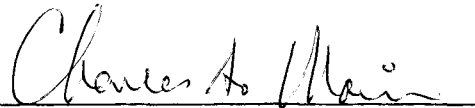
/mc

APPENDIX I
AUTHOR'S STATEMENT OF QUALIFICATIONS

STATEMENT OF QUALIFICATIONS

I, Charles A. Main, geologist, with business addresses in Whitehorse, Yukon Territory and Vancouver, British Columbia and residential address in Vancouver, British Columbia, hereby certify that:

1. I graduated from the University of British Columbia in 1971 with a B.Sc. majoring in Geological Sciences and Chemistry.
2. I have been actively engaged as a geologist in mineral exploration since 1971 and as a partner of Archer, Cathro & Associates (1981) Limited since June 1, 1981.
3. I have personally participated in or supervised the field work reported herein.



Charles A. Main, B.Sc.