

MAP No.

105 K 6

ASSESSMENT REPORT
N. M. E. A. P.
CONFIDENTIAL
OPEN FILE



I.S.N. 134635

TYPE OF WORK: WHITEHORSE M.D.
DRILLING

REPORT FILED UNDER	CYPRUS ANVIL MINES LTD.	DOCUMENT NO.	091712
DATE PERFORMED	1966	DATE FILED:	Oct. 1966
LOCATION - LAT.	62-14 to 62-28	AREA:	FXKO
LONG.	133 20 to 133-20		
CLAIM NO.	JOE CLAIMS		
VALUE \$			
WORK DONE BY	R.S. ADAMSON (United Geophysical Co.)		
WORK DONE FOR	DYNASTY EXPLORATIONS LTD.		
REMARKS	A total of 690' of rotary drilling was completed. No mineralization was intersected.		

#33 LOKO

WORK TARGET
near #33 LOKO

JOE #
85680

ASSESSMENT
JOE CLAIM GROUP
Rotary Drilling

091712

Claim Map Sheet 105 K/6

October 1966

R.S. Adamson

WHITEHORSE TEL.: 667-4343, 667-7114
AREA CODE: 403, TELEX: 049-834
CABLE ADDRESS: ANVLMINE

VANCOUVER TEL.: 683-9304
AREA CODE: 604, TELEX: 04-50237
CABLE ADDRESS: ANVLZINC

ANVIL MINING CORPORATION LIMITED
P.O. BOX 2470
103 POLARIS BLOCK
WHITEHORSE, YUKON TERRITORY
CANADA

VANCOUVER OFFICE:
510 WEST HASTINGS STREET
VANCOUVER 2. B.C.
CANADA

October 21, 1966

Mr. G. McIntyre
Chief Mining Recorder
Federal Building
Whitehorse, Yukon

Dear Mr. McIntyre:

The accompanying report is submitted to apply for assessment purposes on the JOE Claim Group in compliance with the Yukon quartz Act. All claims are owned by PELLY RIVER MINES LTD in the Anvil District of the Yukon Territory.

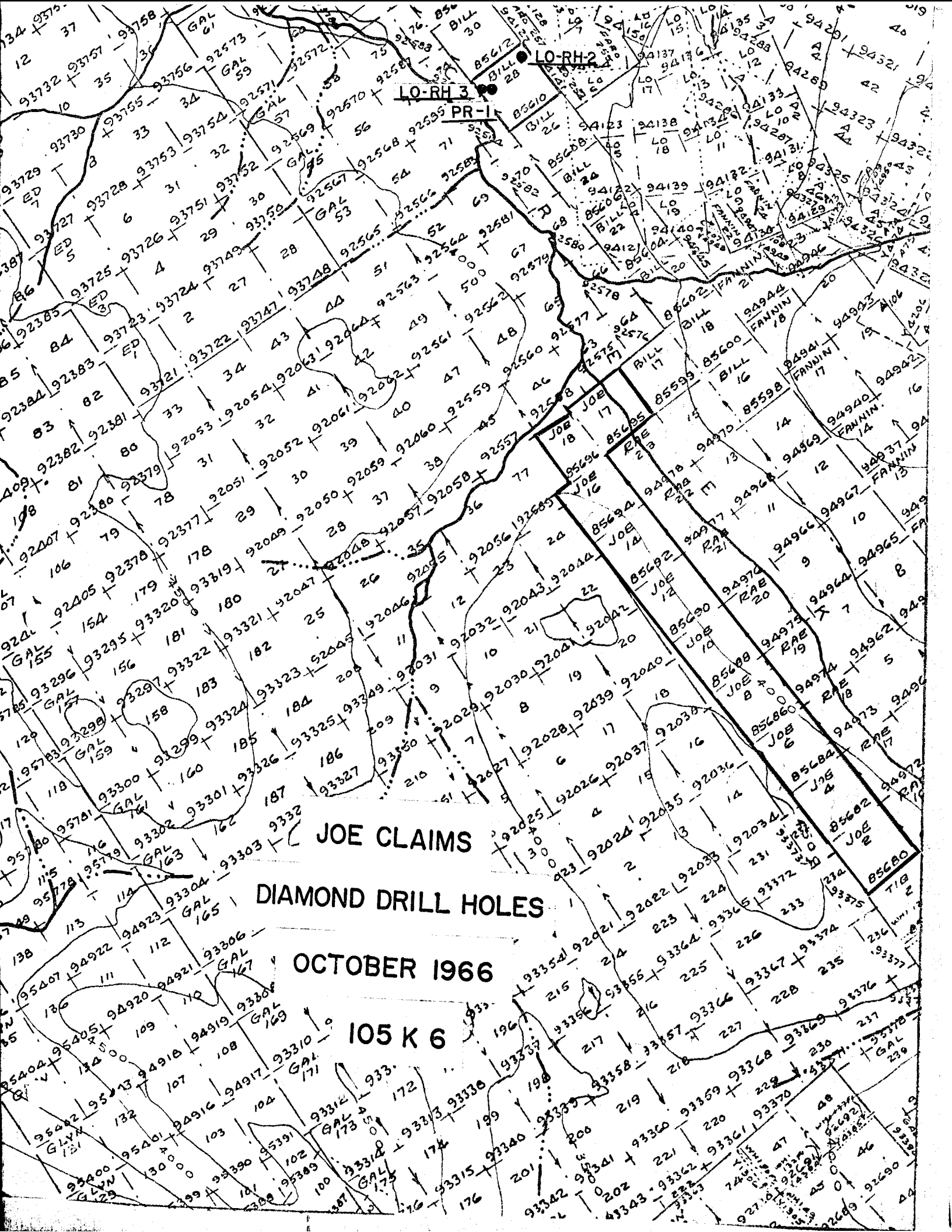
The area covered is contained on claim map 105 K/6.

Yours truly,



R.S. Adamson, P. Eng.
Chief of Exploration for
ANVIL MINING CORP. LTD.

091712



LO-RH-3

LO-RH-2

PR-1

JOE CLAIMS

DIAMOND DRILL HOLES

OCTOBER 1966

105 K 6

ROTARY DRILLING
JOE CLAIM GROUP

by

R.S. ADAMSON, P. Eng.

October, 1966

ROTARY DRILLING

JOE CLAIM GROUP

Rotary drilling was carried out on BILL mineral claim 28 for Dynasty Explorations Ltd. by United Geophysical Company.

Two holes LCRH No. 2 and LCRH No. 3 which total 690 feet were drilled.

No sulphides of any economic interest were intersected so that no assaying was done on the cuttings.

Cuttings are located on boards in the ANVIL MINING COMPANY LTD. warehouse in Whitehorse, Yukon.

R.S. Adamson, P. Eng.

STATEMENT OF COSTS

<u>ROTARY HOLE</u>	<u>FOOTAGE</u>	<u>RATE</u>	<u>COST</u>
LORH 2	340 ft.	\$9 per ft.	\$3,060.00
LORH 3	350 ft.	\$9 per ft.	\$3,150.00
			<hr/>
			\$6,210.00

Rotary Drill Hole Logs

LO RH #1 (380')

- 0 - 30 Biotitic quartz schist, 10% sulphides mainly pyrite with 2% pyrrhotite.
- 30 - 140 Sericite quartz schist, 30' - 60' 10% sulphides, mainly pyrite and pyrrhotite in equal amounts, 60' - 130' 7% sulphides, mainly pyrite with lesser pyrrhotite, 130 - 140 10% sulphide, mainly pyrite and pyrrhotite in equal amounts.
- 140 - 210 Biotitic quartz schist.
140 - 180, 15% sulphide mainly pyrite and pyrrhotite.
180 - 190, 10% sulphide, mainly pyrite with about 2% pyrrhotite.
190 - 200, 10% sulphide.
200 - 210, 7% sulphide mainly pyrite and pyrrhotite in equal amounts.
- 210 - 380 Sericite quartz schist, 7% sulphide mainly pyrite & pyrrhotite.

LO RH#2 (340')

- 0 - 70 Biotitic quartz schist 0 - 20, 1% sulphide, 20 - 50 2% sulphide, 50 - 70, 5% sulphide, mainly pyrite with lesser pyrrhotite.
- 70 - 340 Sericite quartz schist, 70 - 80, 7% sulphide, mainly pyrite with minor pyrrhotite. 80 - 100, 10% sulphide, mainly pyrite with lesser pyrrhotite. 100 - 150, 15% sulphide mainly 150 - 190, 7% sulphide. 190 - 270, 12% sulphide. 270 - 340, 15% sulphide. Mainly pyrite and pyrrhotite in about equal amounts.

LO RH#3 (350')

- 0 - 20 Quartz sericite schist, 2% sulphide, mainly pyrite with lesser pyrrhotite.
- 20 - 60 Quartz sericite schist, 10% sulphide, mainly pyrite with lesser pyrrhotite.
- 60 - 120 Sericite - quartz schist, 60' - 110', 10% sulphide 110' - 120', 15% sulphide, largely pyrite with lesser pyrrhotite.
- 120 - 300 Graphitic schist, 120 - 130, 10% sulphide, 130 - 150, 15% sulphide, 150 - 270, 10% sulphide, 270 - 300, 5% sulphide, largely pyrite with lesser pyrrhotite.
- 300 - 350 Sericite quartz schist, 7% sulphide, mainly pyrite with lesser pyrrhotite, minor chalcopyrite 300 - 320.

LO RH#4 (250')

- 0 - 10 Sericite quartz schist, 1% pyrite and pyrrhotite with minor magnetite (?)
- 10 - 20 Sericite quartz schist, 10% sulphide, largely pyrite with about 1% pyrrhotite.

LO RH #4 (250')

- 20 - 120 Sericite quartz schist, 20' - 40', 15% sulphide
40' - 60', 10% sulphide, 60' - 90', 20% sulphide,
mainly pyrite & pyrrhotite in equal amounts.
90' - 120', 10% sulphide, mainly pyrite with about
2% pyrrhotite.
- 120 - 150 Graphitic quartz schist, 120' - 130', 10% sulphide,
mainly pyrite with about 2% pyrrhotite, 130 - 150,
10% sulphide, mainly pyrite with minor pyrrhotite.
- 150 - 250 Sericite quartz schist, 150 - 180, 15% sulphide,
mainly pyrite and pyrrhotite, 180 - 190, 20% sulphide,
mainly pyrite with about 8% pyrrhotite. 190 - 210
10% sulphide, 210 - 220, 15% sulphide mainly pyrite
and pyrrhotite, 220 - 230, 15% sulphide, mainly
pyrite and lesser pyrrhotite, 230 - 240, 15% sulphide,
mainly pyrite and pyrrhotite, 240 - 250, 10% sulphide
mainly pyrite with about 3% pyrrhotite.