

MAP No.  
106 C 10, 11, 14, 15

ASSESSMENT REPORT  
N. M. E. A. P.  
CONFIDENTIAL  
OPEN FILE



1.S.N 134627

TYPE OF WORK: MAYO M.D.  
GEOLOGY; DIAMOND  
DRILLING

REPORT FILED UNDER	CONSOLIDATED COAST SILVER MINES LTD.		DOCUMENT NO.	091700
DATE PERFORMED	1974		DATE FILED:	AUG. 23, 1974
LOCATION - LAT. LONG.	64°46'N		AREA:	BONNET PLUME RIVER
	133°01'W			CORN CREEK
CLAIM NO.	ROB 1-8	LEO 1-8		
	GIN 1-8	JOHN 1-3		
	BARB 1-8			
	DON 1-8			
VALUE \$	TG 1-8	Y84848-Y84903		
WORK DONE BY	D.W. TULLY			
WORK DONE FOR	D. TULLY ENGINEERING LTD.			
REMARKS	<p>The claim group is underlain by dolostone which is interbedded with shale and siltstone. Sphalerite and galena occur as stratabound vein and breccia infillings and replacements with the dolostone. Grab samples indicate areas of high grade Pb, Zn and Ag. Best assays on grab samples show 56.5 oz/ton Ag and 41.75% Zn. These are not representative.</p> <p># 22 CORN CREEK (C03)</p>			

DON TULLY ENGINEERING LTD.  
SUITE 102 - 2222 BELLEVUE AVENUE  
WEST VANCOUVER, BRITISH COLUMBIA  
V7V 1C7

Cob 023

ASSESSMENT REPORT

ON THE

CORN CREEK PROPERTY  
BARB, JOHN, LEO, ROB, DON, GIN and TG  
MINERAL CLAIMS  
CORN CREEK AREA  
BONNET PLUME RIVER  
MAYO MINING DIVISION  
YUKON TERRITORY

W. LONG.  $133^{\circ}-01'$

N. LAT.  $64^{\circ}-41'$

FOR

CONSOLIDATED COAST SILVER MINES LTD. (N.P.L.)  
1840 - 777 HORNBY STREET  
VANCOUVER, BRITISH COLUMBIA

BY

DONALD W. TULLY, P.ENG.

091700

AUGUST 23, 1974

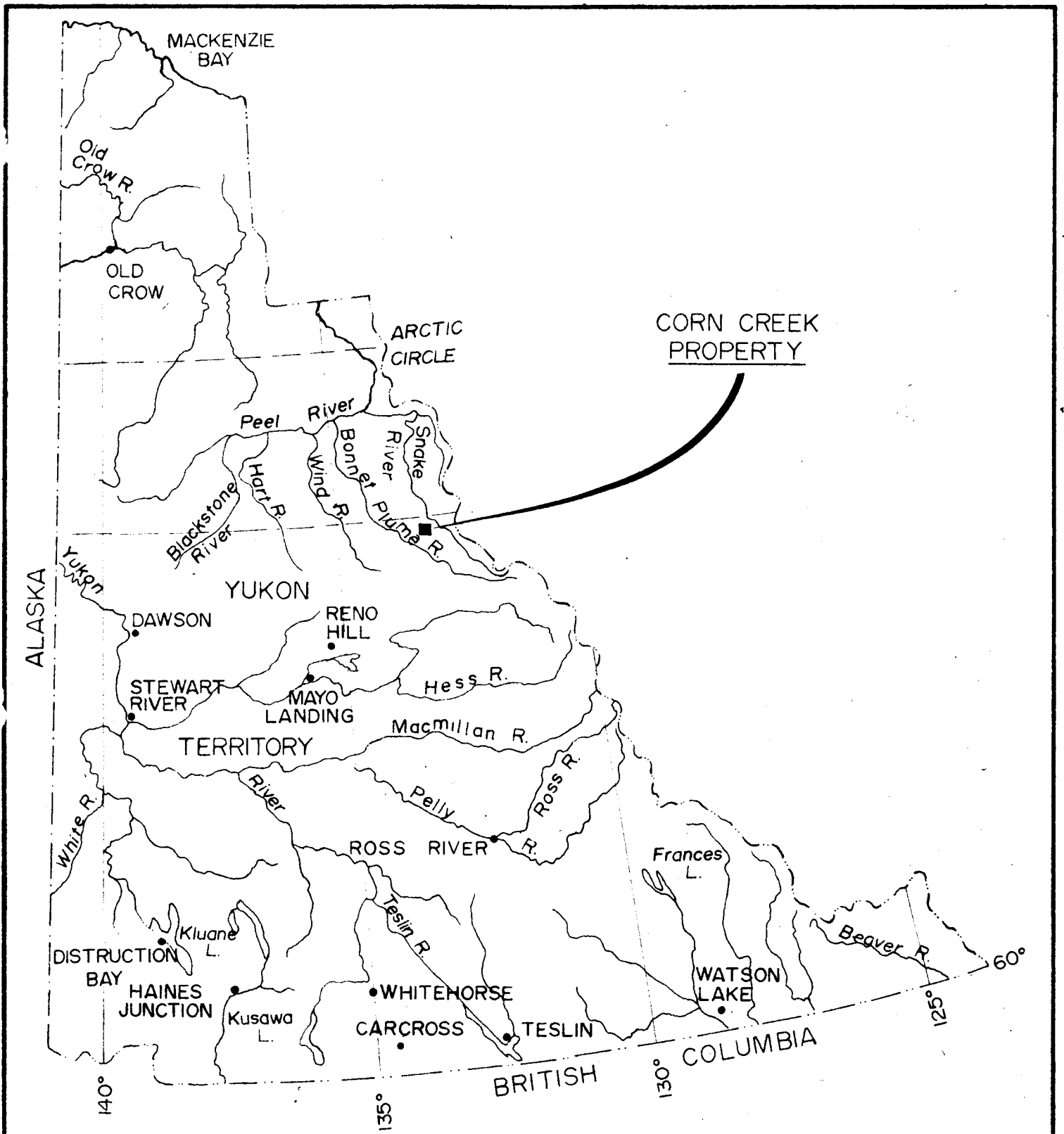
WEST VANCOUVER, B. C.

TABLE OF CONTENTS

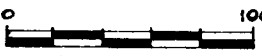
	<u>PAGE</u>
INTRODUCTION.....	1
SUMMARY AND CONCLUSIONS.....	1
PROPERTY - LOCATION, ACCESS, TOPOGRAPHY.....	1
CLAIMS.....	2
HISTORY - PREVIOUS DEVELOPMENT - REFERENCES.....	3
GEOLOGY.....	4
MINERALIZATION.....	6
WORK PROGRAM.....	8
RESULTS.....	8
DIAMOND DRILL HOLE LOG.....	10
TIME - COST DISTRIBUTION.....	11
CERTIFICATE.....	12

MAPS

GENERAL LOCATION MAP.....	Frontispiece
TOPOGRAPHIC MAP.....	Following Page 1
CLAIM PLAN.....	Following Page 2
DIAMOND DRILL HOLE LOCATION PLAN.....	Following Page 9
ASSAY CERTIFICATE.....	End of Report



LOCATION MAP  
CORN CREEK PROPERTY

SCALE  MILES

BY

DONALD W. TULLY, P. Eng.

*Donald W. Tully*

Traced by 2 HANDS +.

## INTRODUCTION

The purpose of this report is to summarize the results of a program of diamond drilling in August 1974 on the Corn Creek property, Bonnet Plume River Area, Mayo Mining Division, for Consolidated Coast Silver Mines Ltd. (N.P.L.) at the request of Mr. R.S. Lennie, President.

The diamond drilling was performed by Strato Geological Ltd., 19 - 448 Seymour Street, Vancouver, British Columbia.

## SUMMARY AND CONCLUSIONS

Disappointing results in mineralization were obtained in diamond drill hole No. 1. However, this hole did not fully explore the #3 mineral (lead-zinc-silver) showing.

Accessibility of the mineral showings (Nos. 1,2,3) as described in my report dated February 12, 1974 are considered difficult in comparison with usual diamond drilling operations.

According to a preliminary accounting by Mr. Uno Leis, Manager, Strato Geological Ltd., 19 - 448 Seymour Street, Vancouver 2, British Columbia, the total cost of the work program was about \$31,000.00.

## PROPERTY - LOCATION, ACCESS, TOPOGRAPHY

Physiographically the claim group lies within the northern Selwyn Mountains.

General Location Plan

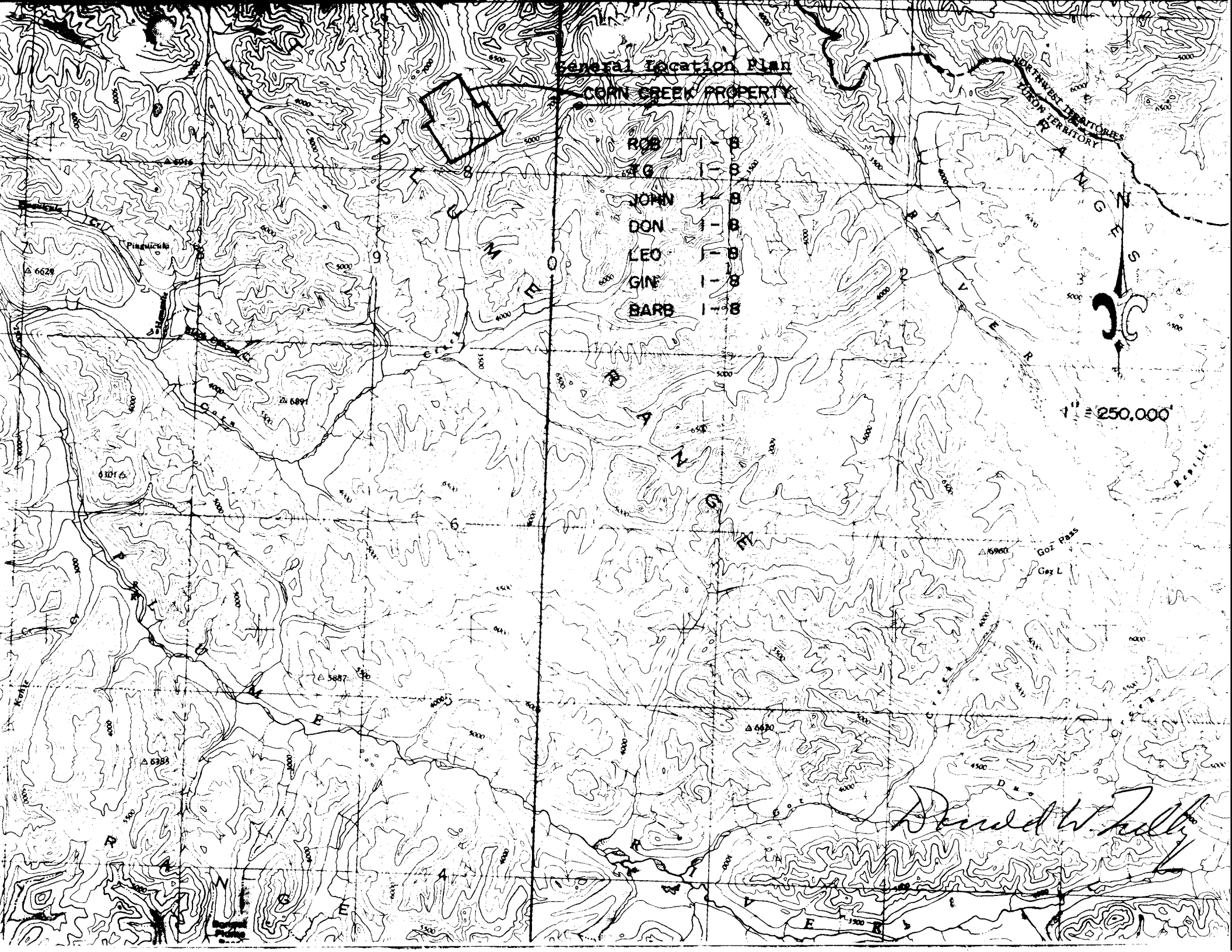
CORN CREEK PROPERTY

- ROB 1-8
- AG 1-8
- JOHN 1-8
- DON 1-8
- LEO 1-8
- GIN 1-8
- BARB 1-8



1" = 250,000'

*David W. Kelly*



The property is located about 140 air miles northeast of Mayo, Yukon Territory, at the headwaters of Corn Creek in the Mayo Mining District. The Bonnet Plume River and Pinguicula Lake lie some 12 - 15 miles west of the claim group.

Access is best from airbases in Mayo by float plane to Pinguicula Lake and thence by helicopter to the property site.

This fifty-six claim group covers approximately five square miles of rough alpine topography. Elevations vary between 4,000 and 7,000 feet above sea-level. Although the valley of Corn Creek has scrub spruce and poplar most of the claim group is above timberline.

Drainage is generally southward through Corn Creek.

### CLAIMS

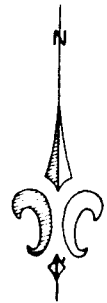
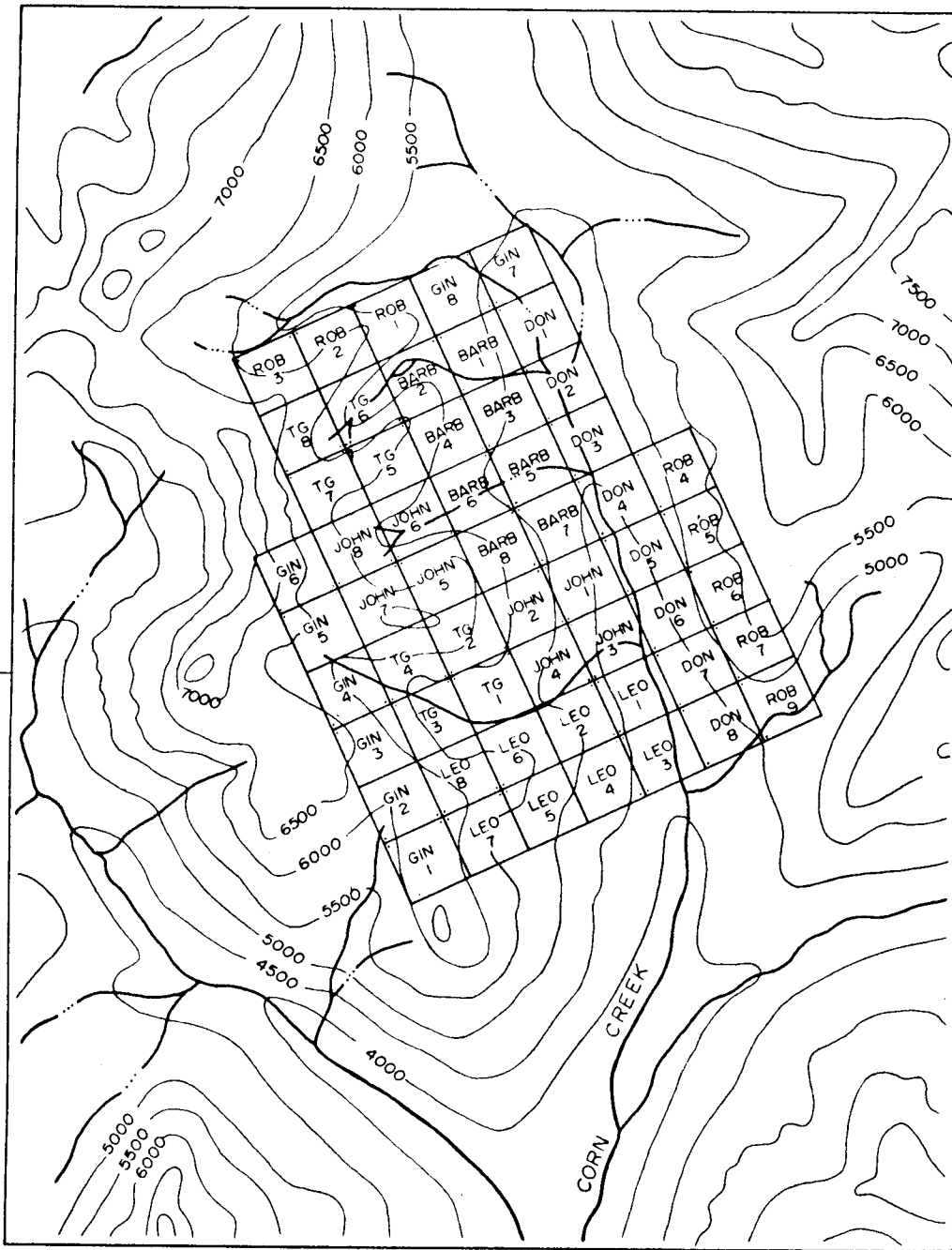
Records on file with the Mining Recorder at Mayo show 56 claims as follows:

<u>CLAIM NAME</u>	<u>GRANT NUMBER</u>	<u>STAKER'S NAME</u>	<u>DATE RECORDED</u>
ROB 1-8	Y84848-55	R.C. Orrey	Aug. 27/73
GIN 1-8	Y84856-63	A.F. Reeve	Aug. 27/73
BARB 1-8	Y84864-71	C.M. Hamilton	Aug. 27/73
DON 1-8	Y84872-79	Don Korody	Aug. 27/73
TG 1-8	Y84880-87	R.O. Harrison	Aug. 27/73
LEO 1-8	Y84888-95	Jed Chinneck	Aug. 27/73
JOHN 1-8	Y84896-903	Bill Love	Aug. 27/73

133° 00' W

64° 45' N

64° 45' N



*Donald W. Tully*

CONSOLIDATED COAST SILVER MINES LTD

**CLAIM MAP**

CORN CREEK PROPERTY

NADALEEN RIVER AREA (NST)

MAYO MINING DISTRICT, YUKON TERRITORY

Drawn from a map by  
Cordilleran Engineering Ltd

Dated *23 August 1974*

To accompany a report dated  
by D.W. Tully, P. Eng

*23 August 1974*

NOTES TOPOGRAPHIC BASE MAP BY DEPARTMENT OF  
NORTHERN AFFAIRS AND NATIONAL RESOURCES  
MAP 106-C-14.

133° 00' W

SCALE: 1" = 1/2" Mile (Approx.)

MAGNETIC DECLINATION 34° 30' (1973)



The claims are plotted on Yukon claim sheets 106-C-10, 11, 14 and 15.

Two years assessment credit is applied for as a result of diamond drilling operations.

#### HISTORY - PREVIOUS DEVELOPMENT - REFERENCES

Programs of geochemical and geological reconnaissance mainly in search of base metals have been conducted in this area of the Northern Selwyn Mountains since 1946 but the results are in private files.

In 1952 J.O. Wheeler did a geological survey of the Bonnet Plume River area and reported chalcopyrite and pyrite disseminated through diorite on Pinguicula Creek and in float in Black Canyon Creek in the watershed of Corn Creek about fifteen miles southwest of the claim group.

S.L. Blusson and D.J. Tempelman-Kluit working for the Geological Survey of Canada on Project 680119 in 1969 did a stratigraphic study of the Nadaleen map-area (106-C) and reported no new mineral occurrences. This project did, however, re-define some of the Ordovician-Devonian units in the dark shale and carbonate facies.

Exploration work in the summer of 1973 by Cordilleran Engineering using a spray type chemical field kit, located extensive showings of zinc oxide and underlying sphalerite mineralization with lesser amounts of galena west of Corn Creek. Three showings (Nos. 1,2,3) were found along a general north-south strike.

A limited program of diamond drilling was carried out on No. 3 mineral showing in August 1974. One hole was drilled to 39.8 feet at a dip of -50 degrees in a southeast direction.

Useful references pertinent to the area are as follows:

Report on Corn Creek Property for Barrier Reef Resources Ltd. (N.P.L.) by C.M. Hamilton of Cordilleran Engineering Limited, December, 1973;

Geological Survey of Canada Paper 53-7, pp 8, 15, 20-23, 39;

Geological Survey of Canada Paper 70-1A, pp 29-32 (Project 680119);

Geological Survey of Canada Memoir 364;

Topographic Map - Nadaleen River 106-C (Scale 1" = 4 miles);

Yukon Claim Sheets 106-C-10, 11, 14 and 15 (Scale 1" = ½ mile);

Report on the Corn Creek Property for Consolidated Coast Silver Mines Ltd (N.P.L.) dated February 12, 1974 by Donald W. Tully, P.Eng.

### GEOLOGY

#### Regional:

Lithological units of the Selwyn Basin geosyncline occupy the general Bonnet Plume River area. They range in age from Proterzoic units east of the Bonnet Plume to Ordovician-Devonian horizons on the north and east side of this river.

A grey limestone unit was recognized as (DL) by J.O. Wheeler in 1952 but was not classified as to age. This carbonate unit (DL) and the associated black shales was mapped in 1969 as Unit 9 striking north-south along the north branch of Corn Creek.

Mapping by the Geological Survey of Canada during the field season of 1969 revised and extended the distribution of the Paleozoic sedimentary facies in the Bonnet Plume River area particularly Unit 9.

Property:

The geology of the Corn Creek property, namely the ROB, GIN, BARB, DON, TG, LEO and JOHN claims, was studied by C.M. Hamilton of Cordilleran Engineering Limited in the summer of 1973. He reports the geology in part, as follows:

"Two recognizable stratigraphic units were mapped and are illustrated on the geological map (Plate V). These units are described in ascending stratigraphic order as follows:

UNIT B

Unit B is comprised of medium to light gray, thick bedded, fine to coarse crystalline dolostone (See Figure 3). Porous vuggy beds and local breccias occur within this unit and host the zinc and lead mineralization. Unit B is contained within a north-northwest trending structural block which dips toward the valley of Corn Creek (east) at approximately 30 degrees. Numerous local faults and fractures cut the carbonate unit as well as the overlying black shales. In some localities the carbonates and shales are in fault contact. Unit B has an estimated thickness of 1,000 feet, however, no stratigraphic sections were measured.

Unit B is believed to be stratigraphically equivalent to the carbonate units containing stratiform zinc mineralization near the Bonnet Plume River located 30 miles to the south of the property.

UNIT A

Unit A conformably (?) overlies Unit B and consists of dark gray to black, thinly laminated shale and siltstone. The unit is non-resistant and underlies the valley of Corn Creek. Minor limonite stain due to traces of weathering pyrite are common, however, no other mineralization was found in this unit."

### MINERALIZATION

Three mineral showings were found along a north-south strike length of some 9,000 feet.

The following is excerpted from the report by C.M. Hamilton describing the Corn Creek property for Barrier Reef Resources Ltd. dated December, 1973:

"Sphalerite and galena show a wide distribution within the upper part of Unit B. Significant mineralization was found at three localities along a north-northwest trending carbonate outcrop. Sparce (but widespread) mineralization was found at intermittent intervals along the strike of this outcrop for 9,000 feet. The three showings which were sampled occur at roughly the same stratigraphic level 400 to 500 feet below the share (Unit A) contact.

Three distinct modes of occurrence of mineralization are recognized. Sphalerite and galena occur as: (1) vug filling in porous dolostone; (2) open fracture vein filling; and (3) matrix in fault breccia. Both stratigraphic and structural control of the mineralization is evident.

The following localities were examined and sampled and are shown on the geological map (Plate V).

#### SHOWING #1

This showing is located along the south margin of the TG 3 claim and consists of several irregular shaped massive discordant bodies of sphalerite with lesser amounts of galena which occur along open faults. The veins range in size from 1 inch to 5 feet in width and can be followed for 300 feet along the base of a steep rock bluff. Much of the surrounding area is covered by talus. The wall rocks consist of mottled light gray, thick bedded microcrystalline dolostone which contains some sphalerite and galena occurring as vug filling. A continuous rock chip sample (#3552) was taken across a 5 foot section of one vein and the assay results are as follows:

<u>SAMPLE NUMBER</u>	<u>CLAIM NO.</u>	<u>oz.Aq.</u>	<u>% Pb</u>	<u>TOTAL Zn</u>	<u>SULPHIDE Zn</u>	<u>% Cd</u>
3552	TG 3	17.5	19.5	41.75%	39.55%	0.09

The sphalerite and galena are also accompanied by pyrite and, as a result, the weathered outcrops are quite rusty in appearance. Minor amounts of quartz and calcite occur with the mineralization. A few traces of tetrahedrite were also noted.

SHOWING #2

Numerous well exposed bodies of galena and sphalerite were found within a 400' by 400' area on a steep mountainside at an elevation of 6,800 feet. The mineralization occurs as fault breccia and as massive vein filling. A continuous rock chip sample (#3550) was taken across a 10 foot section of breccia and a typical specimen (#3551) was taken from a 3 foot wide massive galena vein. The assay results are as follows:

<u>SAMPLE NUMBER</u>	<u>CLAIM NO.</u>	<u>oz.Aq.</u>	<u>% Pb</u>	<u>TOTAL Zn</u>	<u>SULPHIDE Zn</u>	<u>% Cd</u>
3550	JOHN 7	2.3	2.55	30.70%	29.35%	0.06
3551	JOHN 7	56.5	49.25	3.25%	3.10%	0.01

SHOWING #3

A fault vein containing sphalerite and pyrite occurring as breccia matrix along parallel closely spaced fractures was found at an elevation of 5,500 feet. The vein was traced for 200 feet along a strike of N 65° W and dips 75° south. The wall rocks consist of light gray, thick bedded, fine crystalline dolostone containing some sphalerite in vugs. Traces of pyrobitumen were also found accompanying the mineralization. A continuous rock chip sample (#3548) across a 10 foot width of the vein and a specimen (#3549) of massive sphalerite were taken and submitted for assay. The results are as follows:

<u>SAMPLE NUMBER</u>	<u>CLAIM NO.</u>	<u>oz.Aq.</u>	<u>% Pb</u>	<u>TOTAL Zn</u>	<u>SULPHIDE Zn</u>	<u>% Cd</u>
3548	BARB 2	0.96	1.35	8.10%	7.85%	0.02
3549	BARB 2	0.59	0.50	29.75%	29.50%	0.06

### WORK PROGRAM

On July 25, 1974 a vertical diamond drill hole was spotted on the No. 1 mineral showing on claim TG 3 in consultation with Mr. R. Beauchamp, diamond driller. On August 6, 1974 this location was abandoned on consultation with Mr. John Graham, diamond driller, on account of anticipated water-pumping problems. Alternately, No. 1 diamond drill hole was spotted on mineral showing No. 3 near the common boundary of claims BARB 2 - 4 and a drilling platform prepared on the cliff-face at elevation 5375 above sea-level.

D.D. Hole No. 1 was aligned at S 35° E at minus 50° dip and collared using a Winkie diamond drill on August 11, 1974. Water was pumped through a line 1600 feet in length over a vertical distance of 325 feet.

### RESULTS

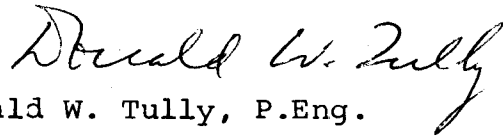
Testing of the No. 1 mineral showing by diamond drilling was generally unsuccessful for the following reasons:

- (a) Due to highly fractured and caving ground the hole was lost at 39.8 feet in depth.
- (b) The main mineral zone was expected at a depth of 50-60 feet in the drill hole but was not reached.

Limestone with fault breccia zones was the rock type encountered. Pyrite, galena and zinc carbonate are present.

Assay results of split four core samples taken in D.D. Hole No. 1 were quite low. These are shown on the log of the hole following this page.

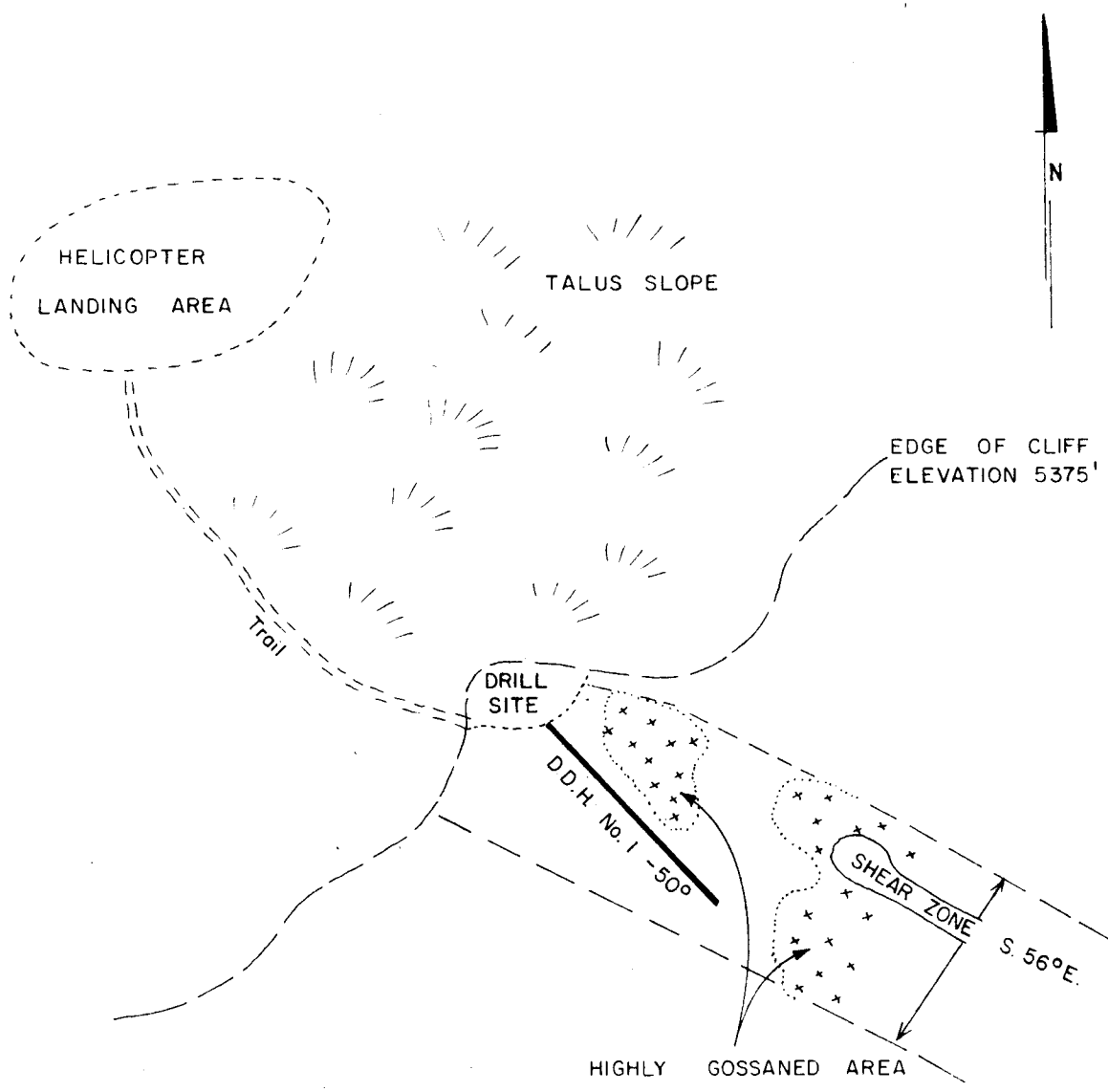
Respectfully submitted,



Donald W. Tully, P.Eng.

Written August 19,20,22,23, 1974

Typed September 15, 1974



*Donald W. Tully*

CONSOLIDATED COAST SILVER MINES LTD. (N.P.L.)

PLAN OF D.D. HOLE No. 1  
 CORN CREEK PROPERTY  
 BONNET PLUME RIVER AREA  
 MAYO MINING DIVISION, YUKON

August 26, 1974

— Donald W. Tully, P. Eng.

Approx. Scale 1" = 20'



SECTION  
LEVEL  
PROPERTY

Elevation 5375  
Surface  
Claim #BARB 2

**DIAMOND DRILL CORE LOG - SAMPLE RECORD**

Core Size - IAX (1.3" dia.) Direction S35E, 39.8'

Depth 50'  
DIP 50°  
HOLE No. 1

DATE DRILLED

Start - 8/11/74  
Finish - 8/14/74

PAGE No. 1

FOOTAGE		DESCRIPTION	MINERALIZATION	SAMPLE No.	ASSAYS						
FROM	TO				From	To	Footage	AU	AG 0.25	EN%	PB%
		(Located on No. 3 showing on north face of cliff)									
0.0	2.4	Casing (No Core)									
	6.5	Limestone (dolomite) highly fractured at 20°-70° to cave	Nil	--							
	10.0	Limestone (dolomite) blue grey coloured, some fault breccia fractured at 30° to cave, fine calcite veinlets, rust on fracture planes	fine galena and zinc carbonate with dissem. pyrite	#1	6.5	10.0	3.5	--	0.29	0.52	0.52
	11.5	Limestone (dolomite) grey	Nil	--							
	15.0	Limestone (dolomite) highly fractured	weak pyrite and zinc carbonate mineralization	#2	11.5	15.0	3.5	--	0.03	0.10	0.03
	20.0	Limestone (dolomite) (cave in hole at 17 feet)		--							
	22.5	Limestone (dolomite) fine calcite veinlets	fine pyrite with sparse zinc carbonate	#3	20.0	22.5	2.5	--	0.06	0.35	0.01

Elevation 5375  
 SECTION Surface  
 LEVEL  
 PROPERTY Claim #BARB 2

**DIAMOND DRILL CORE LOG - SAMPLE RECORD**

DIP 50 .  
 HOLE No. 1 PAGE No. 2

FOOTAGE		DESCRIPTION	MINERALIZATION	SAMPLE No.	ASSAYS						
FROM	TO				From	To	Footage	AU	.025	ZN%	PB%
29.0		Limestone (dolomite) highly fractured with fault breccia zones	fine pyrite	#4	22.5	29.0	6.5	--	0.12	0.35	0.04
39.8		Limestone (dolomite) highly fractured with fault breccia zones (casing was run-down to 16 feet and the Rods stuck in hole and lost due to cave at 27 feet)		--							
		END OF HOLE									

TIME - COST DISTRIBUTION

The work program was performed by Strato Geological Ltd., 19 - 448 Seymour Street, Vancouver, British Columbia.

<u>PERIOD</u>	<u>ITEM</u>	<u>COST</u>
July 23 - August 14, 1974	<u>Wages</u> - 4 men	\$ 7,625.00
	<u>Room and Board</u> - 4 men	867.96
	<u>Supplies</u>	
	- Petroleum products	213.76
	- Equipment Rental	2,415.00
	- Field Supplies	5,751.29
	- Helicopter	8,432.17
	- Fixed-wing aircraft	4,265.40
	- Air-cargo	767.20
	- Truck Rental	830.76
	<hr/>	
	TOTAL.....	\$31,168.54
		=====

September 15, 1974

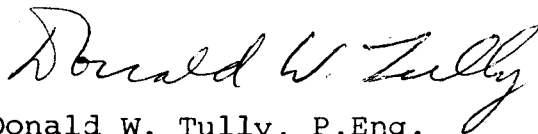
SIGNED: Donald W. Tully

CERTIFICATE

I, DONALD WILLIAM TULLY, of the Municipality of West Vancouver, in the Province of British Columbia, hereby certify as follows:

1. I am a Consulting Geologist with an office at Suite 102, 2222 Bellevue Avenue, West Vancouver, British Columbia.
2. I am a registered Professional Engineer in the Provinces of British Columbia and Ontario.
3. I graduated with a degree of Bachelor of Science, Honours Geology, from McGill University in 1943.
4. I have practiced my profession for twenty-eight years.
5. I have no direct, indirect or contingent interest in the ROB, GIN, BARB, DON, TG, LEO and JOHN claims located near Corn Creek in the Yukon Territory, nor in the securities of CONSOLIDATED COAST SILVER MINES LTD. (N.P.L.), nor do I intend to receive any interest.
6. This report dated August 23, 1974, is based on a personal knowledge of the claims from field trips on July 25 and August 6 - 14, 1974.

DATED at West Vancouver, British Columbia, this 15th day of September, 1974.

  
Donald W. Tully, P.Eng.  
Consulting Geologist

DATE AUGUST 16, 1974

FILE NO. 8522-h

# ASSAY CERTIFICATE

WHITEHORSE ASSAY OFFICE LTD.  
BOX 4518 WHITEHORSE Y. T.  
PHONE 667 2694 Y1A 2R8

SAMPLE RECEIVED FROM

CONSOLIDATED COAST SILVER

SAMPLE NO.	GOLD Oz. Per Ton	SILVER Oz. Per Ton	LEAD	ZINC				
1		.29	.52	.52				
2		.03	.03	.10				
3		.06	.01	.35				
4		.12	.02	.35				

ASSAYER. *Hoyland for H. Spalding*