

FROM: Mining Recorder at Watson Lake

TO: Regional Manager, Mineral Rights at Whitehorse, Y.T.

FOR ACTION ARE:

NEW APPL'N for PLACER LEASE to PROSPECT : Name:

RENEWAL APPL'N PLACER LEASE to PROSPECT: Name:

Lease No.

AFFIDAVIT of EXPENDITURE on PLACER LEASE. Name:

Lease No.

SECURITY DEPOSIT

FINANCIAL ABILITY

ASSIGNMENT of PLACER LEASE No.

From:

To:

GROUPING APPL'N UNDER SEC. 52(2) PLACER MINING ACT.

Owner:

DIAMOND DRILL LOGS:

Claims: SWIFT, SLIDE, MC, JILL

Claim sheet no: 105 B4

QUARTZ ASSESSMENT REPORT:

Claims:

Claim sheet no.:

Type of report:

Submitted by:

Cls. work performed on

\$ Req. for ren. application

Signature

REPLY ACTION.

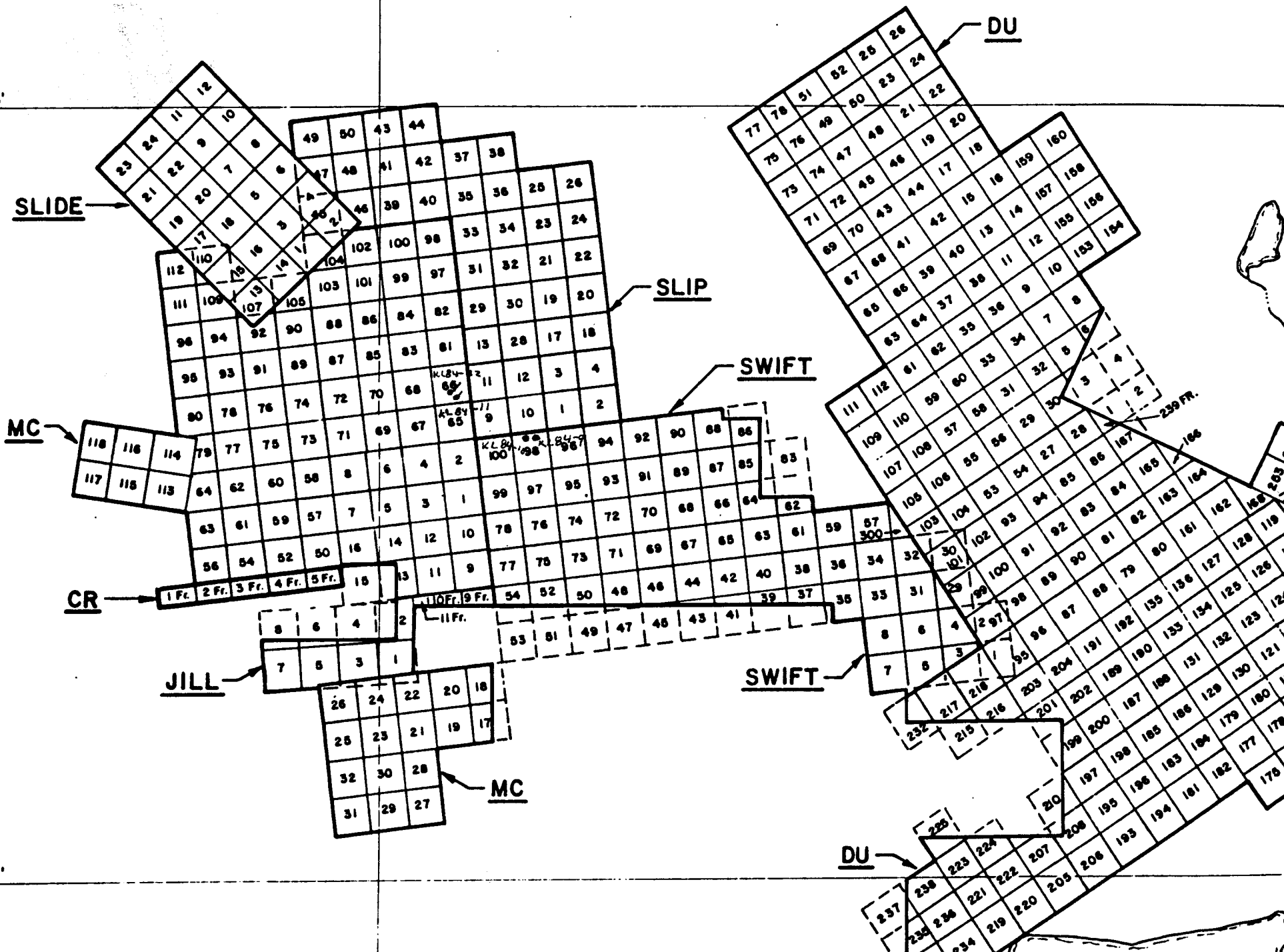
Date Ret.

091580

60° 15'

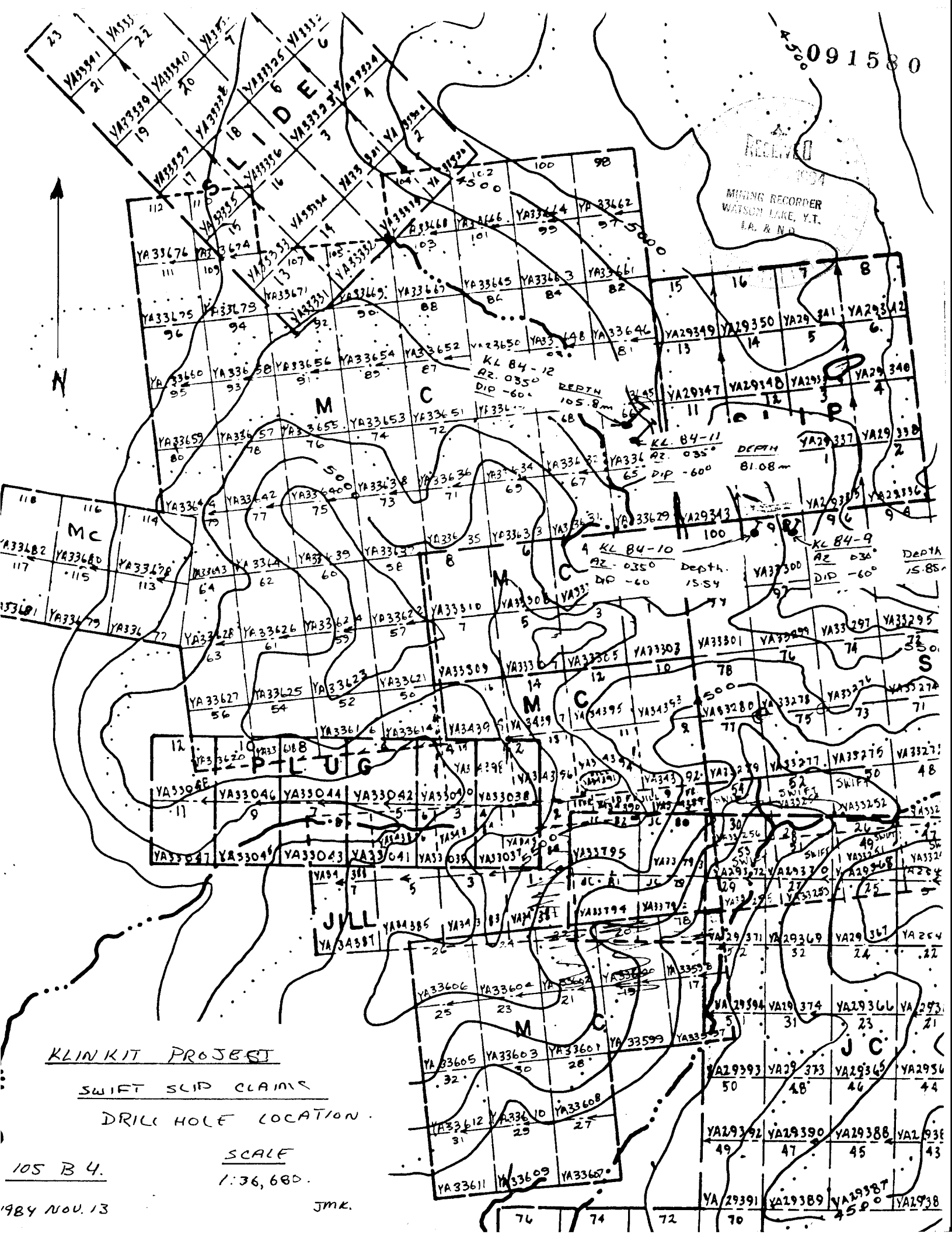
131° 45'

60° 10'



091580

RECEIVED
MILING RECORDER
WATSON LAKE, Y.T.
I.A. & N.D.



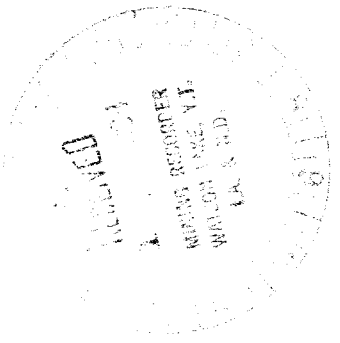
KLINKIT PROJECT
SWIFT SLIP CLAIMS
DRILL HOLE LOCATION.

SCALE
 1:36,680.

105 B 4.

1984 NOV. 13

JMK.



DRILL HOLE RECORD

DU PONT OF CANADA EXPLORATION LIMITED

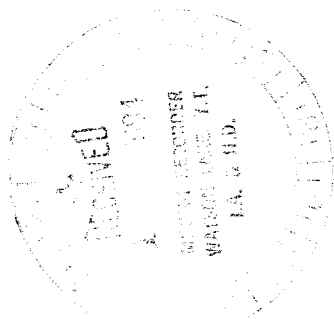
DRILLED BY: Drilcore Industries Ltd.
 DRILL TYPE: Hydrowink LENGTH: 15.85
 CLAIM: SWIFT DIP: -60°
 LATITUDE: ... 12+50S DEPARTURE: ... 1+30E
 ELEVATION: .. AZIMUTH: 030°
 HOLE STARTED: 1984 June 11 HOLE COMPLETED: 1984 June 11

ACID &/OR TRO - PARI TESTS					
DEPTH	DIP	AZIMUTH	DEPTH	DIP	AZIMUTH

SHEET No. 1 OF: 1
 HOLE NUMBER: ... KL84-9
 PROPERTY: SWIFT
 ACCOUNT No.: 335-20
 CORE SIZE: BQ
 % CORE RECOVERY: 99%
 LOGGED BY: J.M. Kowalchuk

INTERVAL (METRES)				DESCRIPTION	SAMPLE				ASSAYS				
FROM	TO	WIDTH	RCVRY		NUMBER	% SULFIDES	INTERVAL (METRES)						
							FROM	TO	WIDTH	RCVRY			
0	8.23			Overburden - boulders of granite and hornfels.									
8.23	15.85			Granite									
				Med. grained - equigranular. Slightly weathered - no alteration.									
				END OF HOLE									

091580



DRILL HOLE RECORD

DU PONT OF CANADA EXPLORATION LIMITED

DRILLED BY: Drilcor Industries Ltd.
 DRILL TYPE: Hydrowink LENGTH: 15.54 m
 CLAIM: SWIFT DIP: -60°
 LATITUDE: 12+50S DEPARTURE: 0+30E
 ELEVATION: _____ AZIMUTH: 035
 HOLE STARTED: 1984 June 12 HOLE COMPLETED: 1984 June 12

ACID &/OR TRO - PARI TESTS					
DEPTH	DIP	AZIMUTH	DEPTH	DIP	AZIMUTH

SHEET No.1 OF: 1
 HOLE NUMBER: KL84-10
 PROPERTY: SWIFT
 ACCOUNT No.: 335-20
 CORE SIZE: BQ
 % CORE RECOVERY: 99%
 LOGGED BY: J.M. Kowalchuk

INTERVAL (METRES)				DESCRIPTION	SAMPLE					ASSAYS				
FROM	TO	WIDTH	RCVRY		NUMBER	% SULFIDES	INTERVAL (METRES)							
							FROM	TO	WIDTH					RCVRY
0	5.0			Overburden.										
5.0	11.80			<u>Hornfels</u> Dark grey to black is colour - very fine grained. Weak slaty cleavage. Spotted texture containing 20% andalusites as porphyroblasts. Also contains 60% Qtz, 5% calcite and 10% biotite.										
11.80	15.54			<u>Granite</u> Medium grained - equigranular occasional qtz eyes. Light grey to pink colour.										
				END OF HOLE										

DRILL HOLE RECORD

DU PONT OF CANADA EXPLORATION LIMITED

DRILLED BY: Drilcor Industries Ltd
 DRILL TYPE: Hydrowink LENGTH: 81.08
 CLAIM: MC DIP: -60°
 LATITUDE: 10+75S DEPARTURE: 5+00W
 ELEVATION: - AZIMUTH: 035°
 HOLE STARTED: 1984 June 16 HOLE COMPLETED: 1984 June 17

ACID &/OR TRO- PARI TESTS					
DEPTH	DIP	AZIMUTH	DEPTH	DIP	AZIMUTH

SHEET No. 1 OF: 2
 HOLE NUMBER: KL84-11
 PROPERTY: MC
 ACCOUNT No.: 335-20
 CORE SIZE: BQ
 % CORE RECOVERY: 95%
 LOGGED BY: J.M. Kowalchuk

INTERVAL (METRES)				DESCRIPTION	SAMPLE				ASSAYS				
FROM	TO	WIDTH	RCVRY		NUMBER	% SULFIDES	INTERVAL (METRES)						
								FROM	TO	WIDTH	RCVRY		
0	2.1			Casing - Overburden.									
2.1	6.5		25	Hornfels Very broken core. Black-fine grained - well foliated rock. 60% Qtz, 20% biotite, 5% Calcite. Foliation 70° to core axis. 10% disseminated hornblende. 0.3% diopside enveloping Qtz veining.									
6.5	35.7		95	Marble Pale grey colour, massive texture, coarse crystalline. 65% calcite, 10% qtz, trace diopside, trace red garnet. Foliation 80° to core axis.									
35.7	48.0		95	Hornfels Interbedded with marble. Black colour - fine-grained. Bedding 75° to core axis.									
48.0	52.4		95	Calc silicate skarn 75% Qtz, 10% calcite, medium grey colour. 5% diopside along foliation planes. 3% garnet along foliation planes.									

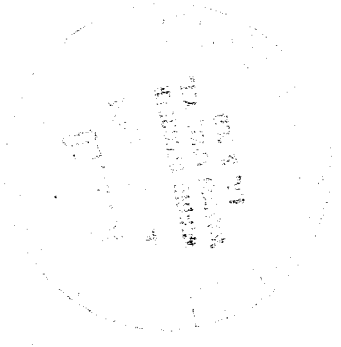
DRILL HOLE RECORD

DU PONT OF CANADA EXPLORATION LIMITED

 HOLE NUMBER: KL84-11

 SHEET NUMBER 2 OF 2

INTERVAL (METRES)				DESCRIPTION	SAMPLE				ASSAYS										
FROM	TO	WIDTH	RCVRY		NUMBER	% SULFIDES	INTERVAL (METRES)												
FROM	TO	WIDTH	RCVRY				FROM	TO	WIDTH	RCVRY									
52.4	54.5		95	<u>Hornfels</u> Black colour, fine-grained, well foliated, 65° to core axis. 50% qtz, 30% calcite, 20% biotite. Calc silicate comprises 40% of this unit as interbeds.															
54.5	81.1		95	<u>Marble</u> Light grey colour, medium grained, foliation 60° to core axis. 60% calcite, 20% qtz.															
				END OF HOLE															



DRILL HOLE RECORD

DU PONT OF CANADA EXPLORATION LIMITED

DRILLED BY: Drilcor Industries Ltd
 DRILL TYPE: Hydrowink LENGTH: 105.8
 CLAIM: MC DIP: -60°
 LATITUDE: 10+50S DEPARTURE: 6+00W
 ELEVATION: - AZIMUTH: 035°
 HOLE STARTED: 1984 June 17 HOLE COMPLETED: 1984 June 19

ACID &/OR TRO-PARI TESTS					
DEPTH	DIP	AZIMUTH	DEPTH	DIP	AZIMUTH

SHEET No. 1 OF: 3
 HOLE NUMBER: KL84-12
 PROPERTY: MC
 ACCOUNT No.: 335-20
 CORE SIZE: BQ
 % CORE RECOVERY: 95
 LOGGED BY: J.M. Kowalchuk

INTERVAL (METRES)				DESCRIPTION	SAMPLE				ASSAYS					
FROM	TO	WIDTH	RCVRY		NUMBER	% SULFIDES	INTERVAL (METRES)			Sn %	SnO ₂ %	Zn ppm	Ag ppm	Au ppb
							FROM	TO	WIDTH					
0.0	1.9			Casing - overburden.										
1.9	3.0		50	Hornfels - Broken core.										
				Black - fine-grained. Foliation 40° to core axis. Trace Py and Po.										
3.0	17.4		80	Marble										
				Very light grey colour. Fine to medium grained. 70% calcite, 15% qtz.										
				16.75-17.4 - Fault gouge.										
				5% diopside, 2-4% Actinolite.										
17.4	30.2		100	Calc-silicate										
				Very light grey colour - fine-grained. Section contains 10% interbedded hornfels.										
				40% calcite, 30% qtz, 10% biotite, 2-4% Hedenbergite, 5% diopside, 10% Actinolite, trace arsenopyrite.										
30.2	32.8		90	Skarn	8258E		30.2	32.8	2.6	0.099	0.094	6400	2.4	70
				Dark green colour, fine to medium grained, well foliated at 70° to core axis. 15% Qtz, 15% calcite, 40% Actinolite, 10% hornblende, 10% magnetite in veins. 10% Arsenopyrite in veins.										

BOX 77.2

091580

DRILL HOLE RECORD

DU PONT OF CANADA EXPLORATION LIMITED

 HOLE NUMBER: KL84-12

 SHEET NUMBER 2 OF 3

INTERVAL (METRES)				DESCRIPTION	SAMPLE				ASSAYS						
FROM	TO	WIDTH	RCVRY		NUMBER	% SULFIDES	INTERVAL (METRES)				Sn %	Sn0 % 2	Zn ppm	Ag ppm	Au ppb
							FROM	TO	WIDTH	RCVRY					
32.8	52.8		100	Skarn	8259E		32.8	34.8	2.0		0.082	0.079	11200	1.8	5
				Massive, porphyroblastic - coarse grained, dark grey colour.	8260E		34.8	36.8	2.0		0.059	0.049	409	1.7	5
				A patchy magnetite-fluorite-qtz rock. 15% Calcite, 1%	8261E		36.8	38.8	2.0		0.060	0.059	4800	1.4	<5
				Actinolite. Foliation 80° to core axis.	8262E		38.8	40.8	2.0		0.042	0.012	122	1.8	5
				30% fluorite - 50% magnetite - pervasive.	8263E		40.8	42.8	2.0		0.074	0.073	137	1.7	5
				2-4% arsenopyrite in veinlets. This gave a positive tin test in	8264E		42.8	44.8	2.0		0.100	0.098	132	1.5	<5
				field.	8265E		44.8	46.8	2.0		0.096	0.094	105	1.7	5
52.8	58.6		100	Marble	8266E		46.8	48.8	2.0		0.091	0.090	108	1.6	5
				Light grey colour - fine to medium grained.	8267E		48.8	50.8	2.0		0.070	0.068	98	1.5	5
				Foliation 80° to core axis.	8268E		50.8	52.8	2.0		0.069	0.065	107	1.7	<5
				50% calcite, 5% Qtz, 15% biotite, 5% Actinolite, trace											
				fluorite.											
58.6	64.1			Skarn											
				Possibly a chloritize mylonite zone. Mylonite, breccia, medium	8269E		58.7	60.7	2.0		0.110	0.098	8360	1.5	5
				brown colour, 20% calcite, 5% Qtz, 15% biotite, 10% actinolite.	8270E		60.7	62.7	2.0		0.130	0.112	7200	1.7	<5
				Trace vesuvianite, 5% magnetite, 5% sphalerite, 20% chlorite	8271E		62.7	64.7	2.0		0.096	0.094	20500	1.4	5
				pervasive throughout.											
64.1	75.6		100	Skarn	8272E		64.7	66.7	2.0		0.210	0.117	17900	1.5	10
				Medium to dark green in colour. Slightly brecciated. Medium	8273E		66.7	68.7	2.0		0.154	0.115	660	0.6	5
				to fine grained. 10% calcite, 20% Qtz, 10% biotite, 40%	8274E		68.7	70.7	2.0		0.090	0.024	369	0.7	5
				Actinolite, 1% garnet. Trace fluorite 5%, 10% arsenopyrite.	8275E		70.7	72.7	2.0		0.018	0.016	1600	0.7	5
				The veins contain a later stage amphibole within an											
				actinolite skarn.											

DRILL HOLE RECORD

DU PONT OF CANADA EXPLORATION LIMITED

 HOLE NUMBER: KL84-12

 SHEET NUMBER 3 OF 3

INTERVAL (METRES)				DESCRIPTION	SAMPLE				ASSAYS						
FROM	TO	WIDTH	RCVRY		NUMBER	% SULFIDES	INTERVAL (METRES)				Sn %	SnO ₂ %	Zn ppm	Ag ppm	Au ppb
							FROM	TO	WIDTH	RCVRY					
75.6	81.0		100	Calc Silicate											
				Light grey colour, fine-grained. Bedding 80° to core axis.											
				20% calcite, 30% Qtz, 5% biotite. Foliated in rock, 10%											
				Hedenbergite, 20% diopside, 5% garnet. Veins - 20% actinolite,											
				0.3% fluorite. Patches - 1% magnetite.											
				76.9-79.0 - Actinolite rich vein - 70% actinolite.											
81.0	84.6		100	Calc silicate											
				Light grey colour, fine grained, well foliated 80° to core axis.											
				80% qtz, 5% calcite and biotite.											
84.6	90.5			Skarn											
				Medium green colour - well foliated, fine to medium grained.											
				Foliated 80° to core axis. 20% quartz, 5% calcite and biotite.											
				Veins 25° to core axis contain 0.3% magnetite, 1% Py and											
				2-4% sphalerite. 20% diopside, 20% actinolite.											
				Some interbedded hornfels.											
90.5	103.7		100	Skarn											
				Black fine to medium grained, well foliated.	8277E		90.5	92.5	2.0	0.074	0.052	18200	3.2	5	
				20% Qtz, 30% actinolite, 10% magnetite, 5% AsPy, 2-4% sphalerite.	8283E		102.5	103.7	1.2	0.395	0.320	342	10.2	10	
				Black Mt-act skarn.											
103.7	105.8		100	Calc Silicate											
				Light grey colour.											
				70% Qtz, 10% calcite.											
				END OF HOLE											

CSA MINERALS INC.

SWIFT PROJECT, YT



STATEMENT OF EXPENDITURES

1984 January 1 - 1984 September 30

Travel Expenses	\$ 479.17
Camp Expenses	44.08
Mapping, Gr. Surveys, Maps	91.90
Drilling Costs	50,203.21
Ground Clearing & Trenching	4,696.00
Freight, Hauling, Storage	981.59
Assaying	1,293.09
Salaries - Regular	1,800.39
Equipment Rental	531.89
Telephone	166.04
	<hr/>
	\$60,287.36
	<hr/> <hr/>

John Kowalchuk

091580

CSA MINERALS INC.
#102 - 1530 ALBERNI STREET
VANCOUVER, B.C. V6G 1A5
PHONE (604) 684-3448

NO 120

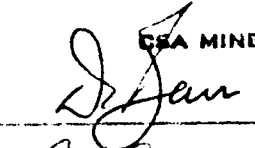
August 28th 1984

PAY Two Thousand Six Hundred and Twenty-Eight ¹⁰⁰-----85 DOLLARS \$2628.85

TO THE ORDER OF
Min-En Laboratories Ltd
705 West 15th Street
North Vancouver, BC
V7M 1T2

CSA MINERALS INC.

PER



THE ROYAL BANK OF CANADA
MAIN BRANCH - ROYAL CENTRE
1025 WEST GEORGIA STREET
VANCOUVER, B.C. V6E 3N9

PER

NON-NEGOTIABLE

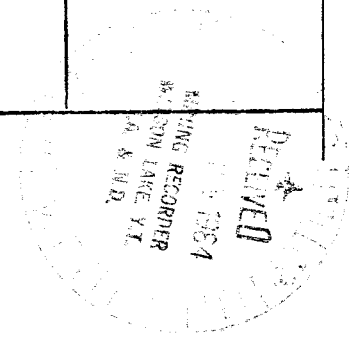
⑆00010⑆003⑆ 112⑆181⑆30⑆

CSA MINERALS INC.

DATE	DESCRIPTION	AMOUNT
Aug.28/84	4498A - Per your invoice (copy attached)	2438.85
	4509A - Per your invoice (copy attached)	190.00
		<u>2628.85</u>

WYA

CUSTOM CHEQUES OF CANADA-VANCOUVER



INVOICE

MIN-EN LABORATORIES LTD.

705 WEST 15TH STREET
NORTH VANCOUVER, B.C.
CANADA V7M 1T2

Phone: (604) 980-5814 or 988-4524
Telex: 04-352828

N^o 4498 A

DATE July 24/84.

YOUR
ORDER NO.

TO · DuPont of Canada Expl.,
· 102-1550 Alberni St.,
· Vancouver, B.C.

PAID
GSA
DELETS. MENT
120

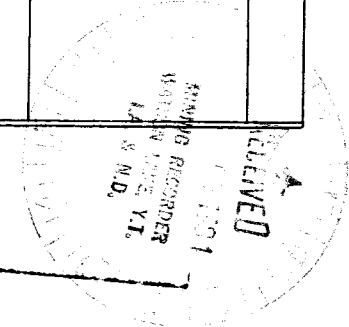
AUG 28 1984

OUR ORDER NO.	TERMS	F.O.B.		
4-548, 4-548R			335	
QUANTITY	STOCK NUMBER/DESCRIPTION	UNIT PRICE	AMOUNT	
79	assays - Total Sn	10 00	790 00	
79	assays - SnO ₂	9 00	711 00	
79	geochem - Zn, Ag	2 90	229 10	
21	geochem - Au	4 75	99 75	
79	assays sample prep	3 00	237 00	
16	assays - Zn	6 00	96 00	
2	assays - Ag	6 50	13 00	
	Can. Frtwys. 021-525624		2175 85	
			263 00	
			2438 85	

DATE	Aug 28 1984
CHARGE	335
APPROVED	John Koop
APPROVED	Duffan

335-08-500-18-2726
335-11-500-18-107310
335-20-500-18-101309
TOTAL 2438.85

THESE ARE PROFESSIONAL SERVICES AND ARE PAYABLE WHEN RENDERED.
OVER 30 DAYS 2% INTEREST PER MONTH WILL BE CHARGED.



INVOICE

MIN-EN LABORATORIES LTD.

705 WEST 15TH STREET
NORTH VANCOUVER, B.C.
CANADA V7M 1T2

Phone: (604) 980-5814 or 988-4524
Telex: 04-352828

N^o 4509 A

DATE July 24/84.

YOUR
ORDER NO.

TO : DuPont of Canada Expl.,
· 102-1550 Alberni St.,
· Vancouver, B.C.

OUR ORDER NO.	TERMS	F.O.B.	335	
QUANTITY	STOCK NUMBER/DESCRIPTION	UNIT PRICE	AMOUNT	
19	assays - Sn	10 00	190	00
	TOTAL		190	00

Hole 84-12

DATE	JUL 20 1984
CHK. NO.	335-20-500-28
APPROVED	<i>[Signature]</i>

PAID
120
AUG 28 1984

MINING RESEARCH
LABORATORY
VANCOUVER
B.C. V7M 1T2

RECEIVED

THESE ARE PROFESSIONAL SERVICES AND ARE PAYABLE WHEN RENDERED.
OVER 30 DAYS 2% INTEREST PER MONTH WILL BE CHARGED.