



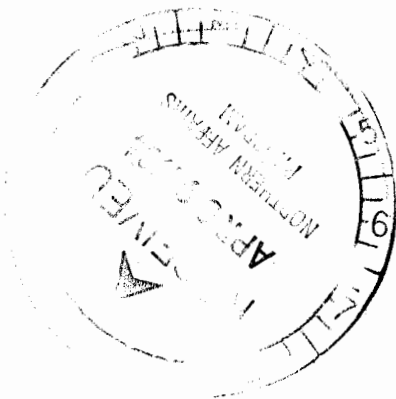
**SUMMARY REPORT**

**JACK CLAIMS**

<sup>W.L.</sup>  
~~WHITEHORSE~~ MINING DIVISION  
YUKON TERRITORY  
105-B-1

**Arnex Resources Ltd.**

**July 28, 1983**



This report has been examined by  
the Geological Evaluation Unit  
under Section 53 (4) Yukon Quartz  
Mining Act and is allowed as  
representation work in the amount  
of \$ 1,000<sup>00</sup>.

*for* *K. Grapes*  
Regional Manager, Exploration and  
Geological Services for Commissioner  
of Yukon Territory.

# LOCATION MAP YUKON TERRITORY

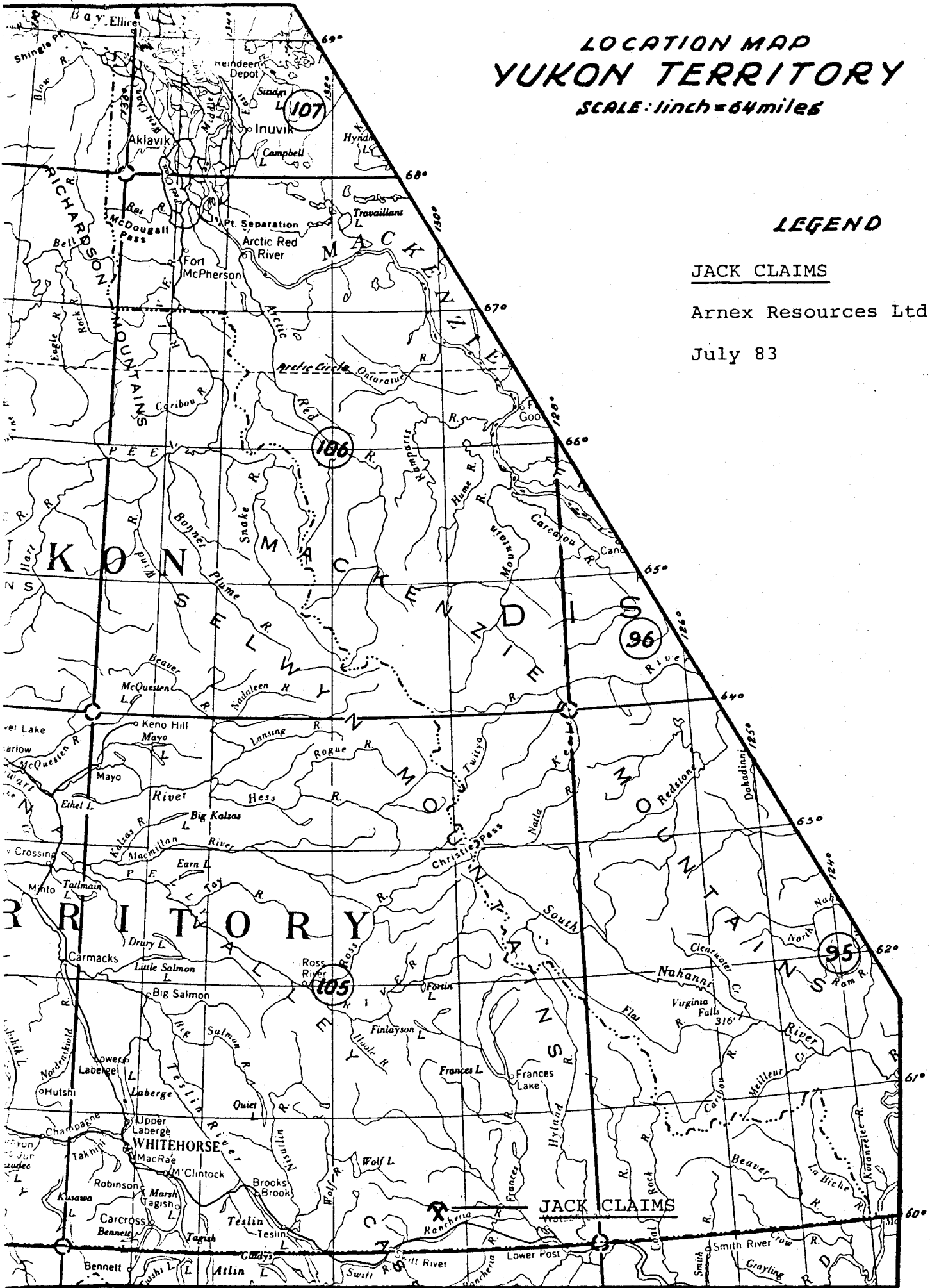
SCALE: 1 inch = 64 miles

## LEGEND

JACK CLAIMS

Arnex Resources Ltd

July 83



## **Introduction**

A property examination of the Jack Claims was carried out by A. O. Birkeland, P. Eng., Arnex Resources Ltd. on behalf of Hardy International Developments Inc., Vancouver, B.C. The examination was carried out on July 3, 1983 in the company of Bill Preston and Terry McCrory. The purpose of the evaluation was to examine the mineral potential for the Jack Claims, a high-grade base and precious metal prospect.

## **Location and Property**

The property is located approximately 20 miles northeast of Rancheria on the Alaska Highway and the southern Yukon. The prospects occur on high sparsely wooded ridges between elevations of 4,500' and 5,500'. The claim group consists of Jack #1-61 and Dane #1-8, 10 and 11 claims.

The property is accessible by road access up Stewart Creek. The road runs to both of the showing locations and provides excellent access during the summer field season.

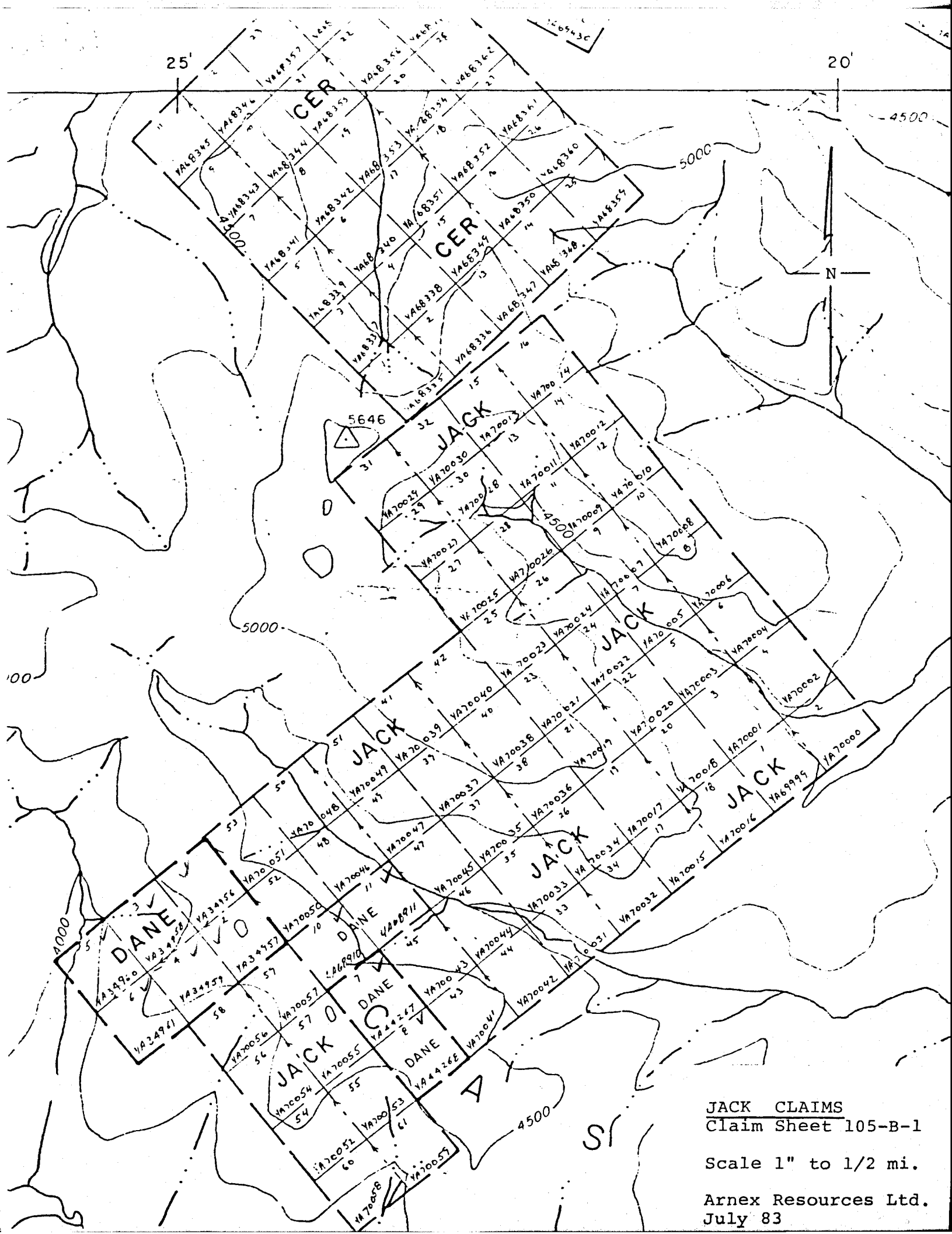
## **History**

The property has been staked and worked on by the senior vendor for some period of time. The vendor claims to have spent \$80,000 on the property to-date.

The property was recently acquired by McCrory Holdings and is the subject of a current agreement between the commissioners of this report and McCrory Holdings.

## **Geology**

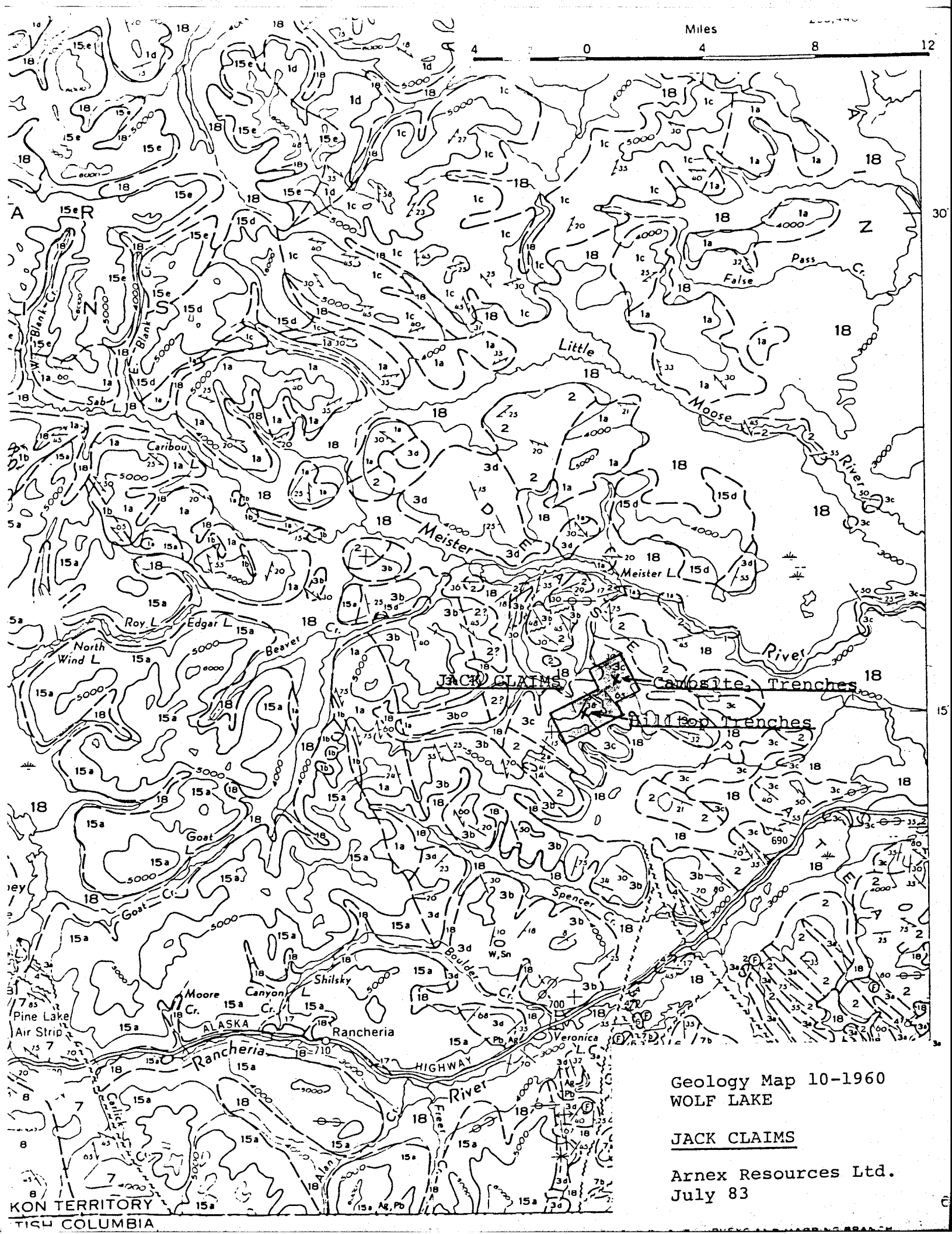
A geological map at a scale of 1:250,000 and descriptive notes are the subject of Map 10-1960, Wolf Lake, Yukon Territory, Sheet 105B. The rocks underlying the area of the Jack Claim group belong to a lower cambrian phyllite, slate, argillite, and limestone sequence (see Geology Map, Figure 3). The map area appears to form major, nearly



JACK CLAIMS  
Claim Sheet 105-B-1

Scale 1" to 1/2 mi.

Arnex Resources Ltd.  
July 83



Miles 0 4 8 12

**JACK CLAIMS**  
 Composite Trenches  
 Hill Top Trenches

Geology Map 10-1960  
 WOLF LAKE

JACK CLAIMS

Arnex Resources Ltd.  
 July 83

KON TERRITORY  
 TISH COLUMBIA

MESOC

biotite-muscovite granodiorite

- 14 Dioritic rocks: diorite, granodiorite, quartz diorite; 14a, includes gneiss, hornblendite
- 13 Ultramafic rocks: olivine-bearing clinopyroxenite, dunite; serpentized and metamorphosed equivalents

PERMIAN TO JURASSIC (?)

- 12 12a, pebble and cobble conglomerate, greywacke, limestone; minor quartzite, chert; 12b, andesitic volcanic breccia and tuff; minor lava(?); 12c, feldspathic quartzite, subgreywacke, greywacke, quartzite, grit, argillite; relatively rich in microcline, may be in part equivalent to 12a and 12b

MISSISSIPPIAN

LOWER AND MIDDLE MISSISSIPPIAN

- 11 Upper Division: chert, slate, argillite, hornfels; minor greywacke; 11a, limestone and dolomite, in part with chert nodules, skarn; 11b, sandy and conglomeratic tuff
- 10 Lower Division: chert and quartzite pebble and cobble conglomerate, chert, quartzite, slate, argillite, hornfels

DEVONIAN AND MISSISSIPPIAN

UPPER DEVONIAN AND LOWER MISSISSIPPIAN

- 9 Limestone and dolomite, in part with chert nodules, skarn
- 8 Chert, hornfels, argillite, slate, phyllite, quartzite, limestone, in part with chert nodules; skarn, tremolitic marble, dolomite; 8a, schist and gneiss
- 7 Greenstone, chlorite schist and quartzite, phyllite, slate, argillite, chert; 7a, greenstone, chlorite schist; 7b, argillite, slate, phyllite, chert, subgreywacke, grit, conglomerate, sericite-biotite schist and quartzite; 7c, limestone and dolomite, in part with chert nodules; 7d, quartz-albite-mica gneiss, albite-actinolite schist

SILURIAN AND DEVONIAN

MIDDLE SILURIAN AND MIDDLE DEVONIAN

- 6 Upper part: grey and black fetid dolomite and calcitic dolomite; Lower part: quartzite and dolomitic quartzite

MIDDLE SILURIAN

- 5 Grey-buff dolomite; underlain by thin-bedded shale and limestone, and buff dolomitic siltstone and quartzite

CAMBRIAN TO SILURIAN

MIDDLE CAMBRIAN TO MIDDLE SILURIAN

- 4 Thin-bedded buff and grey slate, phyllite, and limestone, dark grey slate and limestone; 4a, thin-bedded buff and grey phyllite and limestone; probably Middle and Upper Cambrian; 4b, black slate, argillite, grey dolomite, and dolomitic limestone; probably Ordovician; 4c, hornfels, limestone, skarn

CAMBRIAN

LOWER CAMBRIAN

- 3 3a, grey limestone; minor dolomite, slate, and phyllite; 3b, unfossiliferous, probably equivalent to 3a; 3c, limestone minor grey and green argillite and slate, dolomite, may be older than 2; 3d, marble, skarn

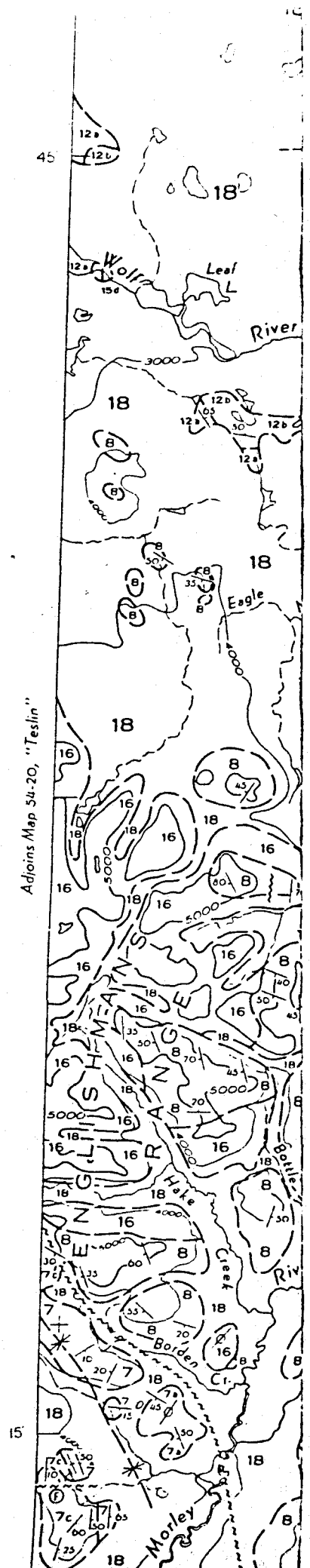
CAMBRIAN AND (?) EARLIER

LOWER CAMBRIAN AND (?) EARLIER

- 2 Quartzite, minor slate and phyllite, quartz grit and fine pebble conglomerate; 2a, phyllite, minor slate; 2b, hornfels
- 1 Probably metamorphic equivalents of 2; 1a, biotite schist and quartzite; 1b, marble and skarn; 1c, biotite schist and quartzite with sills, dykes, and irregular bodies of pegmatite; 1d, biotite schist and gneiss

PALAEOZOIC

PRECAMBRIAN (?) AND PALAEOZOIC



isoclinal folds with numerous shears and tear faults oriented generally in a northerly trending direction.

### **Mineralization**

The mineralization occurs in shears and quartz veins cutting silicified schist country rock. Massive sheared and strained galena is often present associated with limonite and goethite in shears and quartz veins commonly up to 3' in width. Around the pit areas, oxide material with boxwork textures after massive galena are abundant. Smithsonite is also common in the oxidized rubble outcroppings. Two trenched areas approximately 2 kilometers apart were sampled. Descriptions, results and sketches are attached.

In the hilltop trench area, values greater than 20% lead-zinc and 20 oz/T silver were encountered in Trench #1. Samples 62551-62553 represent 1.5 metres of 2% lead, 6% zinc and 4 oz/T silver. High-grade values occur over approximately 100 meters strike length in the Trench 1 to 3 area. A selected high-grade specimen from Hilltop Trench #1 assayed 15% lead-zinc and 37 oz/T silver.

Schist and vein material (sample #62558) in the campsite trench location returned lower grades of 4% lead-zinc and 1.2 oz/T silver.

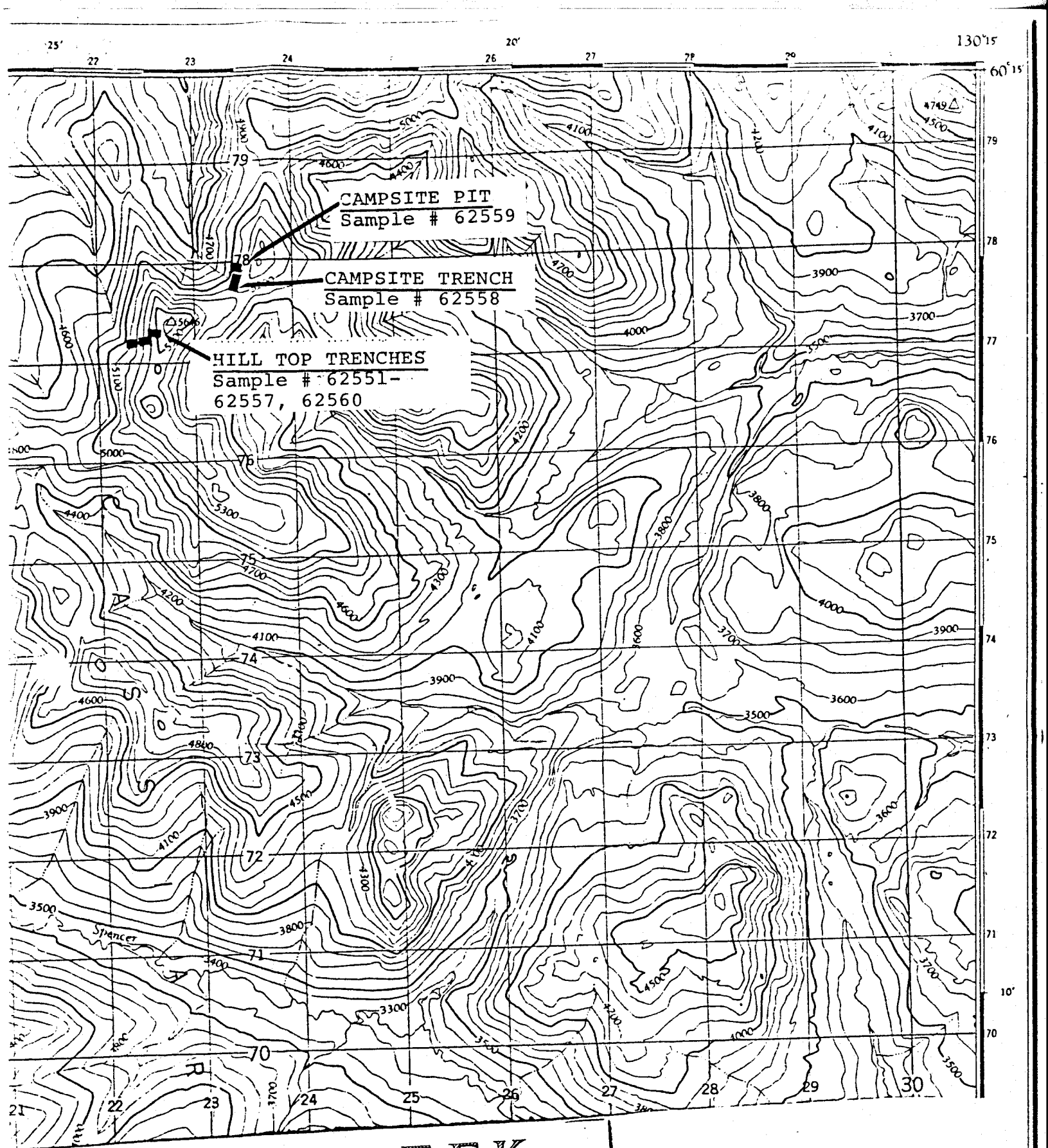
### **Conclusions**

High-grade silver-lead-zinc mineralization occurs across up to 1 meter widths up to 100 meters in strike length in 2 showing areas on the property 2 kilometers apart. Potential for discovering additional mineralized areas appears good.

### **Recommendations**

1. The property should be geologically mapped, prospected and sampled.
2. Additional trenching should be done in poorly exposed showing areas.

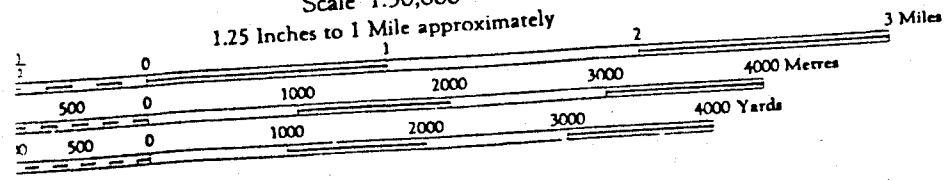




# PINCER CREEK

## YUKON TERRITORY

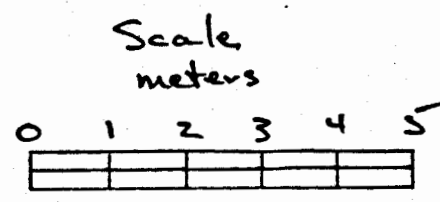
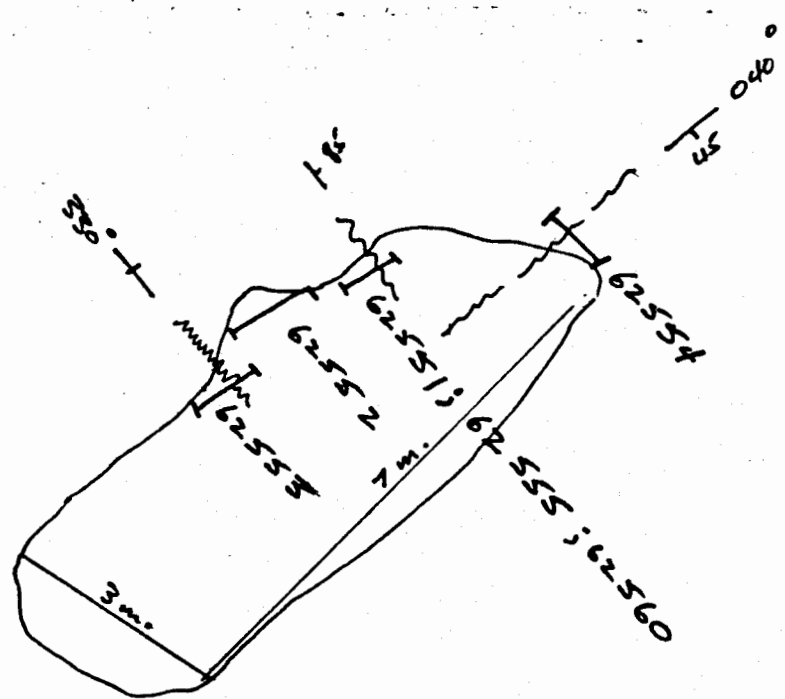
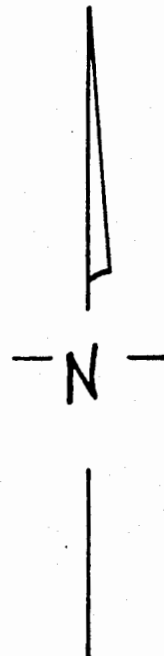
Scale 1:50,000  
1.25 Inches to 1 Mile approximately



JACK CLAIMS

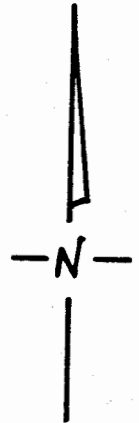
SAMPLE LOCATION MAP

Arnex Resources Ltd.  
July 83



JACK CLAIMS  
SAMPLE LOCATION SKETCH  
HILLTOP TRENCH 1.

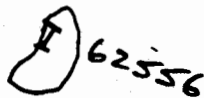
ARNEX RESOURCES LTD  
July 83                      AOB



Trench 3



Trench 2

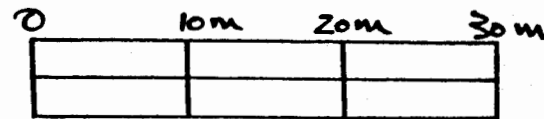


Trench 1



62551 - 62555

Scale



JACK CLAIMS  
SAMPLE LOCATION SKETCH  
HILLTOP TRENCHES

ARVEX RESOURCES LTD  
July 83  
A08

3. A soil geochem grid is recommended for the Campsite Trench areas.

Based on the results of the geological mapping and sampling campaign, diamond drilling may be warranted.

#### References

1. Map 10-1960, Wolf Lake, Yukon Territory, Sheet 105B
2. Claim Sheet 105-B-1 -  $\frac{1}{2}$  mile to the inch revised May 3, 1983.
3. NTS Map Sheet 105B, 1-250,000
4. NTS Map Sheet 105B/1 West Half, 1-50,000.

  
A. O. Birkeland, P. Eng.  
Arnex Resources Ltd.



SAMPLER

A.O. Dickelund

DATE

3 July 83

PROJECT

JACK CLAIMS

NTS

105 B/1 WEST

LINE

AIR PHOTO NO.

SAMPLE NO.	LOCATION	ROCK TYPE	DESCRIPTION					ADDITIONAL OBSERVATIONS OR REMARKS	ASSAYS				
			Sample Type	APPARENT WIDTH	TRUE WIDTH	Alteration	Freshness		Mineralization	Pb%	Zn%	Ag oz/ton	Au ton
62551	HILLTOP TRENCH 1.	Shear	Rock CHIP GRAB		.3m	limonitic	poor	shear strain galena sphalerite	Sample across min. shear Footwall zone (Represents 1.5 m thickness) very weak	5.12	12.30	11.3	.01
552	"	Schist wallrock	"		.6m	pyrrhotite (Ma)	✓	—		0.75	4.85	0.6	.005
553	"	+ shear	"		.6m	limonitic	✓/poor	—		0.45	0.52	0.26	.003
554	"	X-Fault & X-shear	"		1m	limonitic	poor	galena sphalerite	0.03	0.25	0.01	.008	
555	"	Highgrade vein	"		100-200cm	limonitic	oxidized	Massive argentiferous galena	Represents best grade in-place	5.69	15.80	22.42	.006
556	Trench 2.	Shear vein	"		1m				wallrock-schist + limestone	1.16	3.47	0.76	.003
557	Trench 3.	Min. vein	"		Grab	limonitic	sulfides	Massive galena	Represents material up to 1m. width	8.17	10.30	17.96	.003
558	CAMPSTE TRENCH	Schist + vein material	"		.6m	limonitic	oxidized	galena smithsonite		1.75	2.39	1.22	—
559	CAMPSTE DEEP PIT	Schist + vein	"		.2m	None	sulfides	galena	Represents wall rock in mineralized vein area.	0.12	0.09	0.04	—
62560	HILLTOP TRENCH 1.	vein	Specimen of sample # 62551			limonitic smithsonite	oxidized	galena, cerussite sphalerite	Represents grade of specimen	8.77	6.72	37.72	0.01



# CHEMEX LABS LTD.

212 BROOKSBANK AVE.  
NORTH VANCOUVER, B.C.  
CANADA V7J 2C1

TELEPHONE: (604) 984-0221  
TELEX: 043-52597

• ANALYTICAL CHEMISTS

• GEOCHEMISTS

• REGISTERED ASSAYERS

## CERTIFICATE OF ASSAY

TO : ARNEX RESOURCES LIMITED

4286 NAPIER STREET  
BURNABY, B.C.  
V5C 3G6

CERT. # : A8312447-001-  
INVOICE # : 18312447  
DATE : 18-JUL-83  
P.O. # : NONE  
JACK CLAIMS

Sample description	Prep code	Cu %	Pb %	Zn %	Ag FA oz/T	Au FA oz/T	
62551	207	0.08	5.12	12.30	11.30	0.010	--
62552	207	0.02	0.75	4.85	0.60	0.005	--
62553	207	<0.01	0.45	0.52	0.26	0.003	--
62554	207	<0.01	0.03	0.25	0.01	0.008	--
62555	207	0.07	5.69	15.80	22.42	0.006	--
62556	207	<0.01	1.16	3.47	0.76	0.003	--
62557	207	0.02	8.17	10.30	17.96	0.003	--
62558	207	<0.01	1.75	2.39	1.22	<0.003	--
62559	207	<0.01	0.12	0.09	0.04	<0.003	--
62560	207	0.01	8.77	6.72	37.72	0.010	--

.....  
Registered Assayer, Province of British Columbia







**McCrory Holdings (Yukon) Ltd.**

307 Jarvis Street, Whitehorse, Yukon Y1A 2H3  
Telephone (403) 668-7106

Bill Preston  
(403) 667-7175  
Terry McCrory  
JR 25882  
Lebarge Channel

Trenches # ① distance of around 600 feet from  
Post # 1 of claim # 7 (Done)

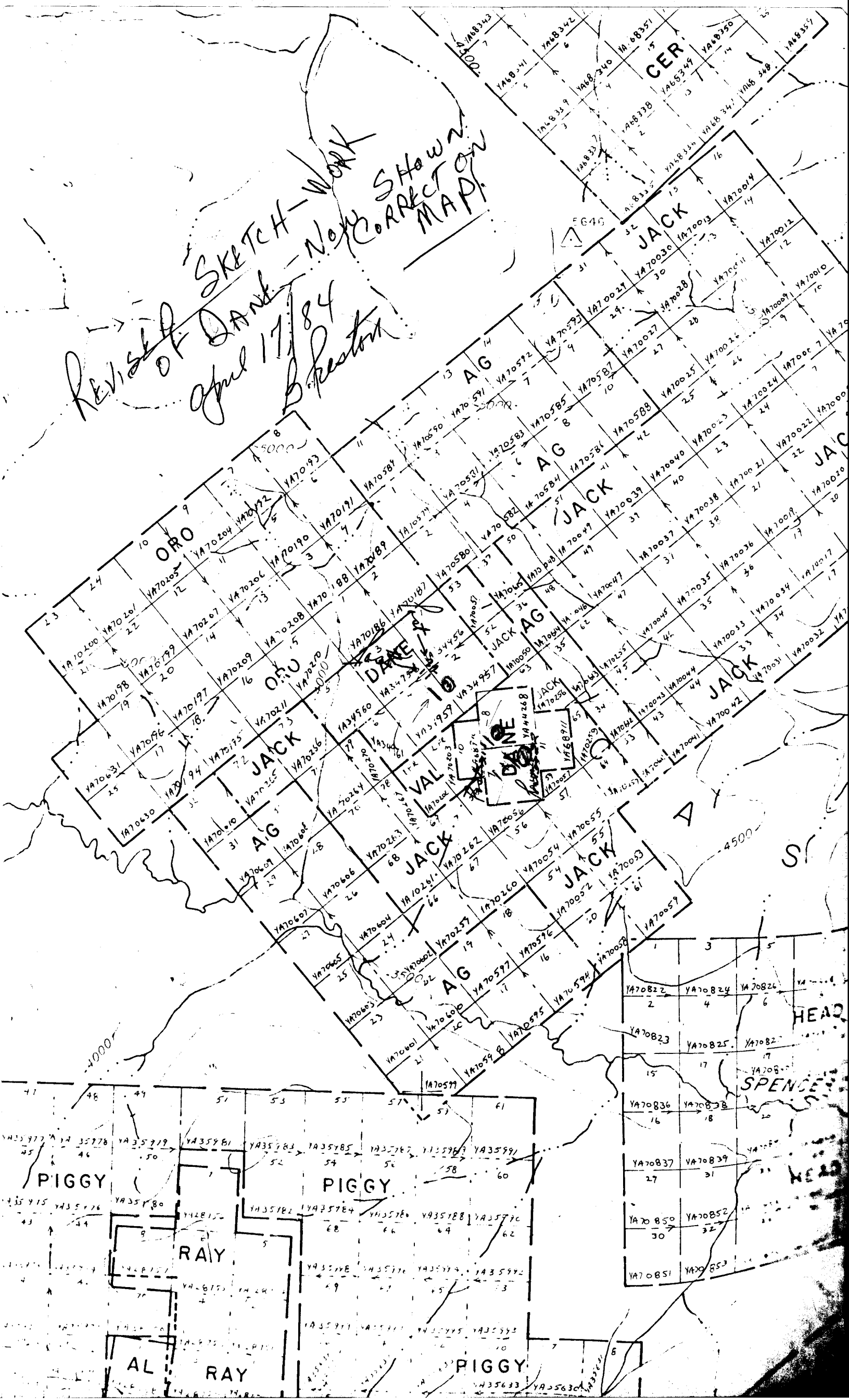
Trench # ② distance of around 400 feet from  
Post # 1 of claims # 8 (Done)

Trench # ③ distance of around 400 feet from  
Post # 1 of claim # 4 (Done)

See map attached next page.



REVISED SKETCH - WORK  
of DANE - NOT SHOWN  
april 17, 84 CORRECT ON  
MAP



ORO

ORO

JACK

AG

DANE

VAL

JACK

AG

JACK

JACK

PIGGY

PIGGY

RAY

AL

RAY

PIGGY

HEAD

SPENCE

HEAD

JACK

AG

AG

JACK

JACK

JACK

JACK

JACK

JACK

HEAD

SPENCE

HEAD

JACK

AG

AG

JACK

JACK

JACK

JACK

JACK

JACK

HEAD

SPENCE

HEAD

JACK

AG

AG

JACK

JACK

JACK

JACK

JACK

JACK

HEAD

SPENCE

HEAD

JACK

AG

AG

JACK

JACK

JACK

JACK

JACK

JACK

HEAD

SPENCE

HEAD

JACK

AG

AG

JACK

JACK

JACK

JACK

JACK

JACK

HEAD

SPENCE

HEAD

JACK

AG

AG

JACK

JACK

JACK

JACK

JACK

JACK

HEAD

SPENCE

HEAD

JACK

AG

AG

JACK

JACK

JACK

JACK

JACK

JACK

HEAD

SPENCE

HEAD

JACK

AG

AG

JACK

JACK

JACK

JACK

JACK

JACK

HEAD

SPENCE

HEAD

JACK

AG

AG

JACK

JACK

JACK

JACK

JACK

JACK

HEAD

SPENCE

HEAD

JACK

AG

AG

JACK

JACK

JACK

JACK

JACK

JACK

HEAD

SPENCE

HEAD

JACK

AG

AG

JACK

JACK

JACK

JACK

JACK

JACK

HEAD

SPENCE

HEAD

JACK

AG

AG

JACK

JACK

JACK

JACK

JACK

JACK

HEAD

SPENCE

HEAD

JACK

AG

AG

JACK

JACK

JACK

JACK

JACK

JACK

HEAD

SPENCE

HEAD

JACK

AG

AG

JACK

JACK

JACK

JACK

JACK

JACK

HEAD

SPENCE

HEAD

JACK

AG

AG

JACK

JACK

JACK

JACK

JACK

JACK

HEAD

SPENCE

HEAD

JACK

AG

AG

JACK

JACK

JACK

JACK

JACK

JACK

HEAD

SPENCE

HEAD

JACK

AG

AG

JACK

JACK

JACK

JACK

JACK

JACK

HEAD

SPENCE

HEAD

JACK

AG

AG

JACK

JACK

JACK

JACK

JACK

JACK

HEAD

SPENCE

HEAD

JACK

AG

AG

JACK

JACK

JACK

JACK

JACK

JACK

HEAD

SPENCE

HEAD

JACK

AG

AG

JACK

JACK

JACK

JACK

JACK

JACK

HEAD

SPENCE

HEAD

JACK

AG

AG

JACK

JACK

JACK

JACK

JACK

JACK

HEAD

SPENCE

HEAD

JACK

AG

AG

JACK

JACK

JACK

JACK

JACK

JACK

HEAD

SPENCE

HEAD

JACK

AG

AG

JACK

JACK

JACK

JACK

JACK

JACK

HEAD

SPENCE

HEAD

JACK

AG

AG

JACK

JACK

JACK

JACK

JACK

JACK

HEAD

SPENCE

HEAD

JACK

AG

AG

JACK

JACK

JACK

JACK

JACK

JACK

HEAD

SPENCE

HEAD

JACK

AG

AG

JACK

JACK

JACK

JACK

JACK

JACK

HEAD

SPENCE

HEAD

JACK

AG

AG

JACK

JACK

JACK

JACK

JACK

JACK

HEAD

SPENCE

HEAD

JACK

AG

AG

JACK

JACK

JACK

JACK

JACK

JACK

HEAD

SPENCE

HEAD</



# McCrory Holdings (Yukon) Ltd.

307 Jarvis Street, Whitehorse, Yukon Y1A 2H3  
Telephone (403) 668-7106

Bill Preston  
(403) 667-7175  
Terry McCrory  
JR 25882  
Lebargé Channel

