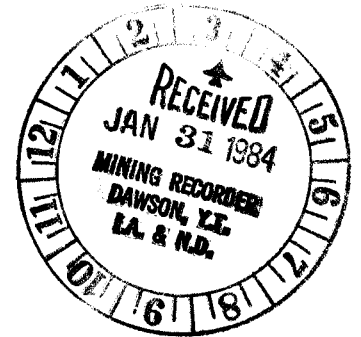


REPRESENTATION WORK REPORT

ON
GOLD-PYRITE SHEAR ZONES ON

CIM 1-4 incl.
YA 64519 - YA 64522 incl.

LAT. 63-55 N-Long. 135-15 W
DAWSON MINING DISTRICT, YUKON
NTS MAP SHEET 115 O 14 (e)



FOR

DAWSON ELDORADO GOLD EXPLORATIONS LTD.

BY

P.S. WHITE P. ENG.(Mining)

20 December 1983.

091512

This report has been examined by
the Geological Evaluation Unit
under Section 53 (4) Yukon Quartz
Mining Act and is allowed as
representation work in the amount
of \$ _____.

[Signature]
Regional Manager, Exploration and
Geological Services for Commissioner
of Yukon Territory.

TABLE OF CONTENTS

	Page
INTRODUCTION.....	1
PROPERTY STATUS.....	1
LOCATION & ACCESS.....	2
ECONOMIC GEOLOGY	2
REPRESENTATION WORK-1983.....	2
SUMMARY & CONCLUSIONS.....	3.

APPENDICES:

Location Sketch of Claim Group
Sketch of Claim Group
Handwritten R. Day 1981 Report
Assay Certificate: 6676,A,B and 6677,A,B.
Certificate of Expenditures.

CIM SHEAR ZONE REPORT

INTRODUCTION:

The CIM quartz mineral claims were staked by Robin Day, geologist, of Edmonton Alberta, as an independent location under the Yukon Quartz Mining Act of two exposed float shear zone rocks with sulfides known and seen by the author of this report in 1980, by Day in 1981, and by C.F. Gleeson who reported them in "Heavy Mineral Studies in the Klondike" published by the GSC in 1970. The float showings in up to 100 foot wide bands in the YCGC dredge tailings have apparently been obliterated by the placer mining activities of 1982 and 1983, but R. Day had examined the showings carefully in the summer of 1981, and wrote a rough, handwritten report which is included as an appendix to this brief summary, for geological information purposes.

No significant prior work has been done on the claims, excepting the Day 1981 examination and Gleeson's 1968-9 inspections. Dawson Eldorado Gold Explorations Ltd. have been performing exploration work on the adjacent Lone Star gold property since 1979, and had seen the dredge pile showings but had ignored the zones in favor of higher priority technical work prior to optioning it from R. Day in early 1983. DEG were required by the option agreement to perform at least one year's work on the property, and did so, plus one year's excess, in the course of their property examination of 1983 prior to exercising the option.

J. Mortensen Ph.D., of Archer, Cathro & Associates (1981) Ltd. examined the area and mapped it from a more regionalized basis in the course of his investigation of the Lone Star gold property work the "Klondike Regional Project" in the summer of 1983, (75% DEG-25% AC), and wrote a report for Dawson Eldorado dated 6 December 1983, which report has been submitted under separate cover to verify representation work filing for certain RJ and AC claims.

PROPERTY
STATUS:

The CIM 1-4 claims were examined by Day in 1981, fees were paid in lieu of work in 1982, and DEG performed 2 years work each claim and applied in September 1983 to have the claims declared in good standing until 1 September, 1985. It is presumed that as a new portion of the Lone Star gold property, that the claims will receive exploration work as part of the ongoing program conducted by DEG Ltd. in 1984 and/or 1985. A considerable amount of late 1983 staking to the northwest of the Lone Star property by third parties has demonstrated the significant stimulation of the DEG:AC work in the area since 1979.

LOCATION AND ACCESS:

The claims are located adjoining and southerly to the mouth of O'Neill Gulch at Upper Bonanza Creek, centred on the original float showings and Bonanza Creek, approx. 27 km. SE of Dawson City, on a seasonal poor quality gravel-mud road. The Claims are shown on NIS Claim Map Sheet 115-O-14, and are currently surrounded by Dawson Eldorado wholly owned quartz claims. The creek itself is usually forable in low water periods, and a bridge crossing shortly upstream from them near the mouth of Victoria Gulch permits vehicle access to dry dredge tailings on the southerly bank of Bonanza Creek.

ECONOMIC GEOLOGY:

The claims have been locally mapped by Day in 1981 (rough report attached hereto), reported on by Gleeson in 1970, examined by the author in 1981, and mapped regionally by J. Mortensen in 1983.

The showings were seen as bands of coarse pyrite in deformed, laminated schists, and occasional specks of galena and spalerite have been seen by the author and others in certain randomly selected hand specimens of float.

Minimal conventional prospecting has failed to disclose the "in situ" location of the sulfides, and the float showings have been all but obliterated by current (1982-1983) placer mining activities, with mechanical gravel moving bulldozers and loaders pushing dredge tailings through a large trommel and sluice boxes.

REPRESENTATION WORK-1983:

E. Huggard and S. Smith, in the employ of Dawson Eldorado, and each with 4 years experience in prospecting for gold in the district, spent 5 days between 21 May and 6 June 1983, re-establishing the claim boundaries by line cutting and chaining, and then picketting out systematic locations for subsequent hand pitting of dredge tailings and surface material near the edge of both banks of Bonanza Creek on the 4 claim group in an attempt to find the showings in place. The efforts were not successful in that regard, but six hand specimens of the pyrite sulfidic material were located as float specimens and assayed with minimal silver gold or Pb-Cu response by Loring Laboratories of Calgary, as Nos. 6676, 6676A, 6676B and 6677, 6677a and 6677B. Assay certificates attached hereto show minimal responses.

The pitting work was followed up by Mortensen in his regional mapping of the Lone Star Ridge property in August and September 1983, but information was so minimal as to have been largely ignored by him except for overall mapping coverage in his 6 Dec. 1983 report. That report has been filed with the Dawson Mining Recorder under separate cover as work justification for certain RJ and AC claims belonging currently to Dawson Eldorado. Sketches showing the prospecting activities are included herewith as Appendices to this report.

SUMMARY AND CONCLUSIONS:

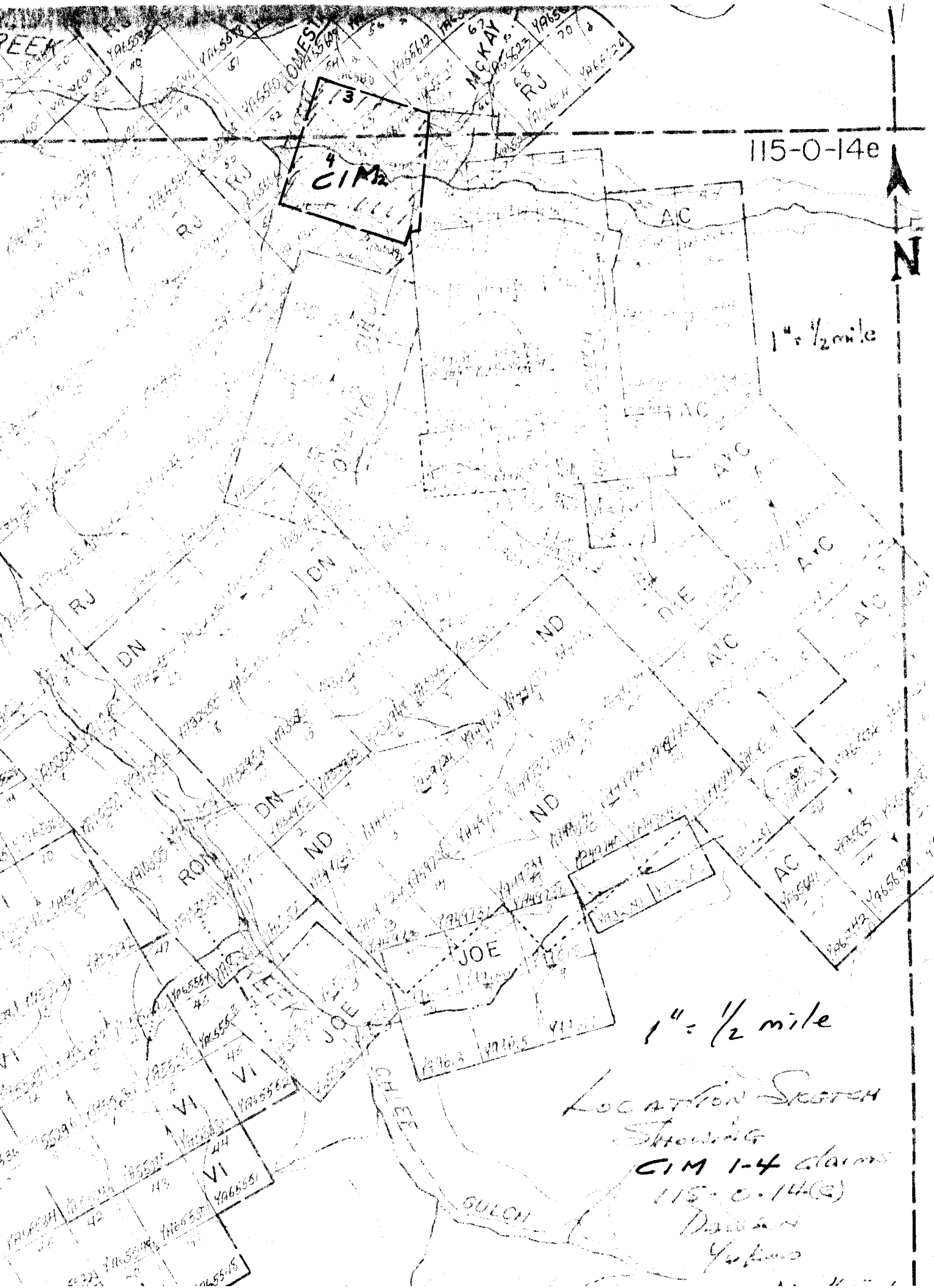
The float assay results were disappointing, but the known presence of sulfide mineralization known to contain some gold-silver metal historically, in a visually striking geological texture, stimulated Dawson Eldorado to exercise its option to acquire the claims in late December 1983, for strategic and potential worth purposes for future scrutiny under its long standing and ongoing Lone Star program.

Attempts to locate the sulfides in place were not successful, and geophysics (resistivity) is recommended if such equipment is a future part of the Lone Star program.

Respectfully submitted



Paul S. White P. Eng.(Mining)



115-0-14e

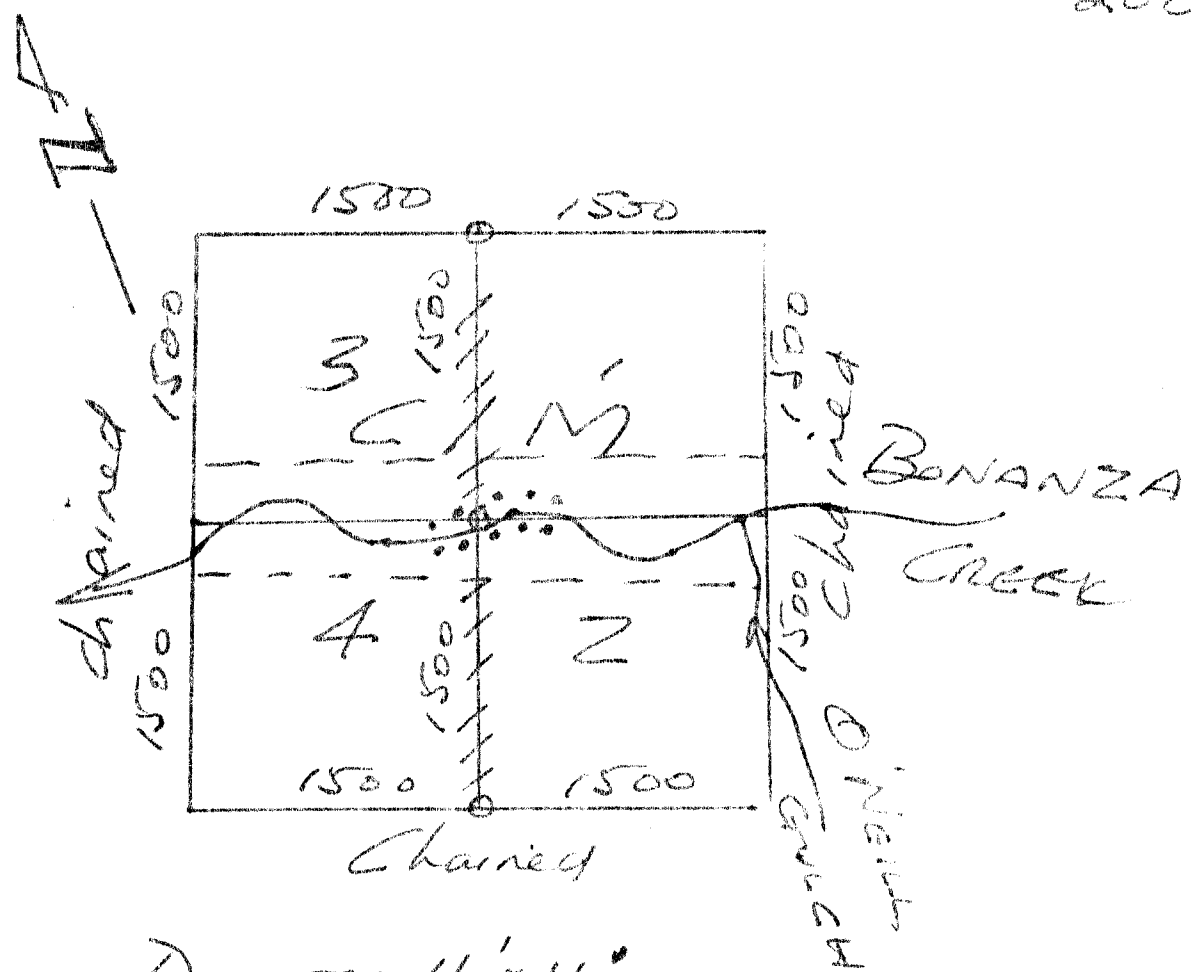


1 1/2 mile

1 1/2 mile

LOCATION SYSTEM
Showing
CIM 1-4 claims
115-C-14(e)
Dawson
Yukon

20 Dec. 1980



- DENOTES 4' x 4' SHOVELLED PIT FOR PROSPECTING PURPOSES

+++++ DENOTES CLAIM LINE RE ESTABLISHED

----- DENOTES PICKET LINE CUT AND RUN FOR PROSPECTING.

SCALE: 1:400

(1)

R. Day
1981

C.I.M. CLAIM GROUP (PROPERTY RECORD)

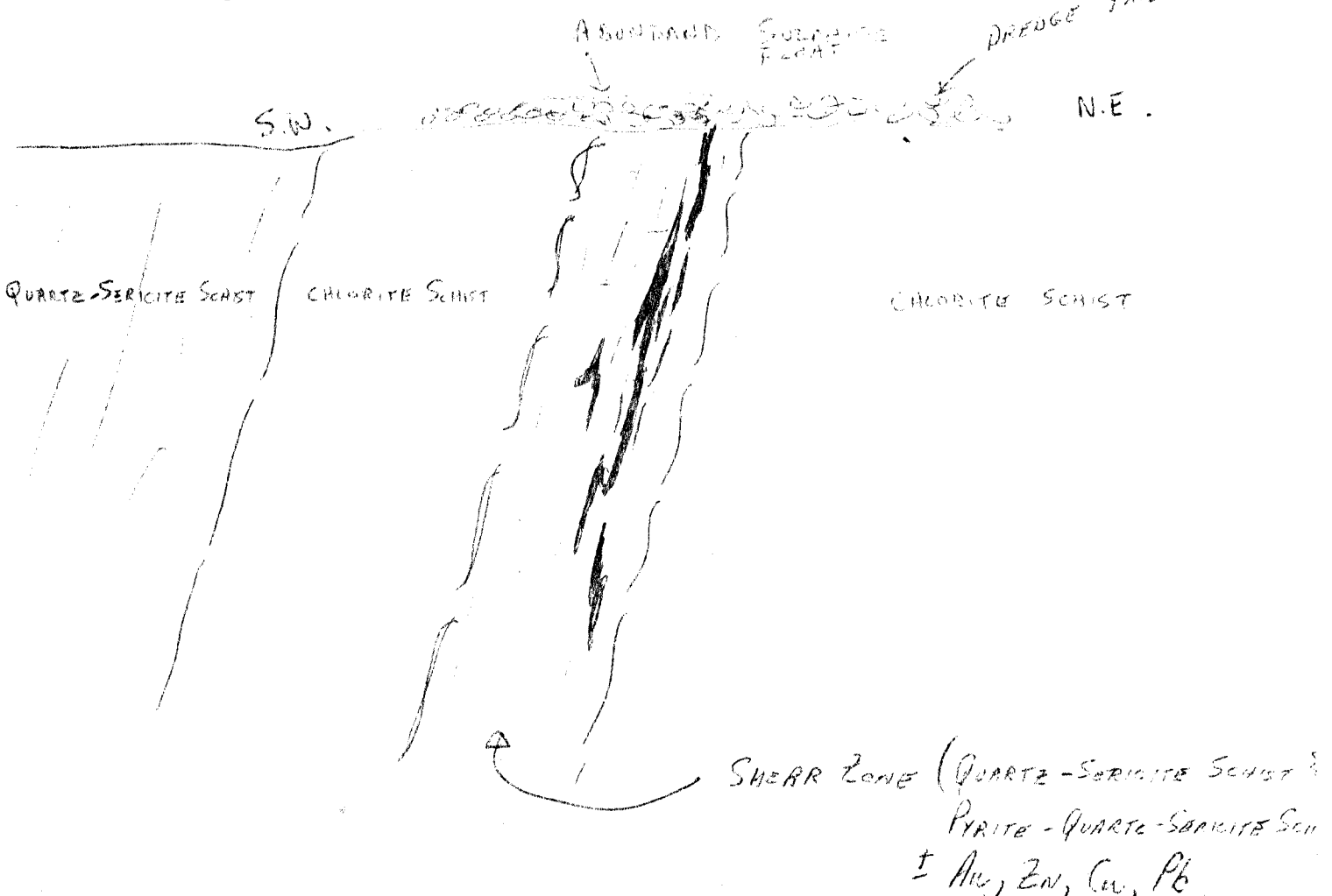
LOCATION - THE C.I.M. GROUP CONSISTS OF 4 CLAIMS & IS LOCATED IN THE HEART OF THE KLONDIKE PLACER GOLD FIELDS STRADDLING UPPER BONANZA CREEK BETWEEN NIGGER & O'NEIL GULLCHES.

ACCESS - ACCESS IS BY GOOD ROAD 17 MILES UP BONANZA CREEK FROM DAWSON CITY.

GENERAL GEOLOGY - THE CLAIM BLOCK ~~IS UNDERLAIN~~ & SURROUNDING AREA IS UNDERLAIN BY THE KLONDIKE SCHIST OF PROBABLE PRECAMBRIAN AGE. THE KLONDIKE SCHISTS ARE GENERALLY ACCEPTED AS A METAMORPHOSSED VOLCANIC PILE. LITTLE FRESH OUTCROP CAN BE SEEN EXCEPT IN SOME BEROCK DRAINS CUT BY PLACER MINING OPERATIONS. ROCK TYPES SEEN AS FLOAT & IN OUTCROP ON THE C.I.M. GROUP ~~INCLUDE~~ ARE SERICITE-QUARTZ SCHIST, PYRITIC QUARTZ-SERICITE SCHIST, CHLORITE SCHIST & AURIFEROUS PYRITE-QUARTZ-SERICITE SCHIST \pm SPHALERITE, CHALCOPYRITE & GALENA. THE STRIKE OF SCHISTOSITY OF ROCKS ON THE CLAIM GROUP IS N.W. - THE STRIKE OF BEDDING IS ALSO N.W. AS LITHOLOGIES CHANGE ACROSS THE STRIKE.

ON EL Dorado CREEK. THESE SHOWINGS ARE CHARACTERIZED BY FREE GOLD ASSOCIATED WITH PYRITE AND SOME GALENA & SPHALERITE IN QUARTZ BOULDER, BLOBS & STRINGERS. ALTHOUGH HIGH GRADES WERE NOTED, THESE SHOWINGS WERE SPOTTY & OF LOW POTENTIAL TENOR. THE MINERALIZED FLOAT ON THE C.I.M. GROUP APPEARS TO BE OF A DIFFERENT CHARACTER. THE SCOUT DATA ABOVE SUGGESTS THE POSSIBILITY OF EITHER A PYRITIZED - SERICIFIED - SAUCERTIZED SHEAR ZONE WITH ABUNDANT ~~SHOOTS~~ SHOOTS OR A SHEARED SLIDE DEPOSITE OF EXHALATIVE - VOLCANIC ORIGIN.

SCHEMATIC X-SECTION "A" WESTERN SHEAR



(4)

SCHEMATIC X-SECTION "B" WESTERN SHEAR
AREA of SULPHIDE FACIES IN TAILS

S.W.  N.E.

QUARTZ -
SERICITE
SCHIST

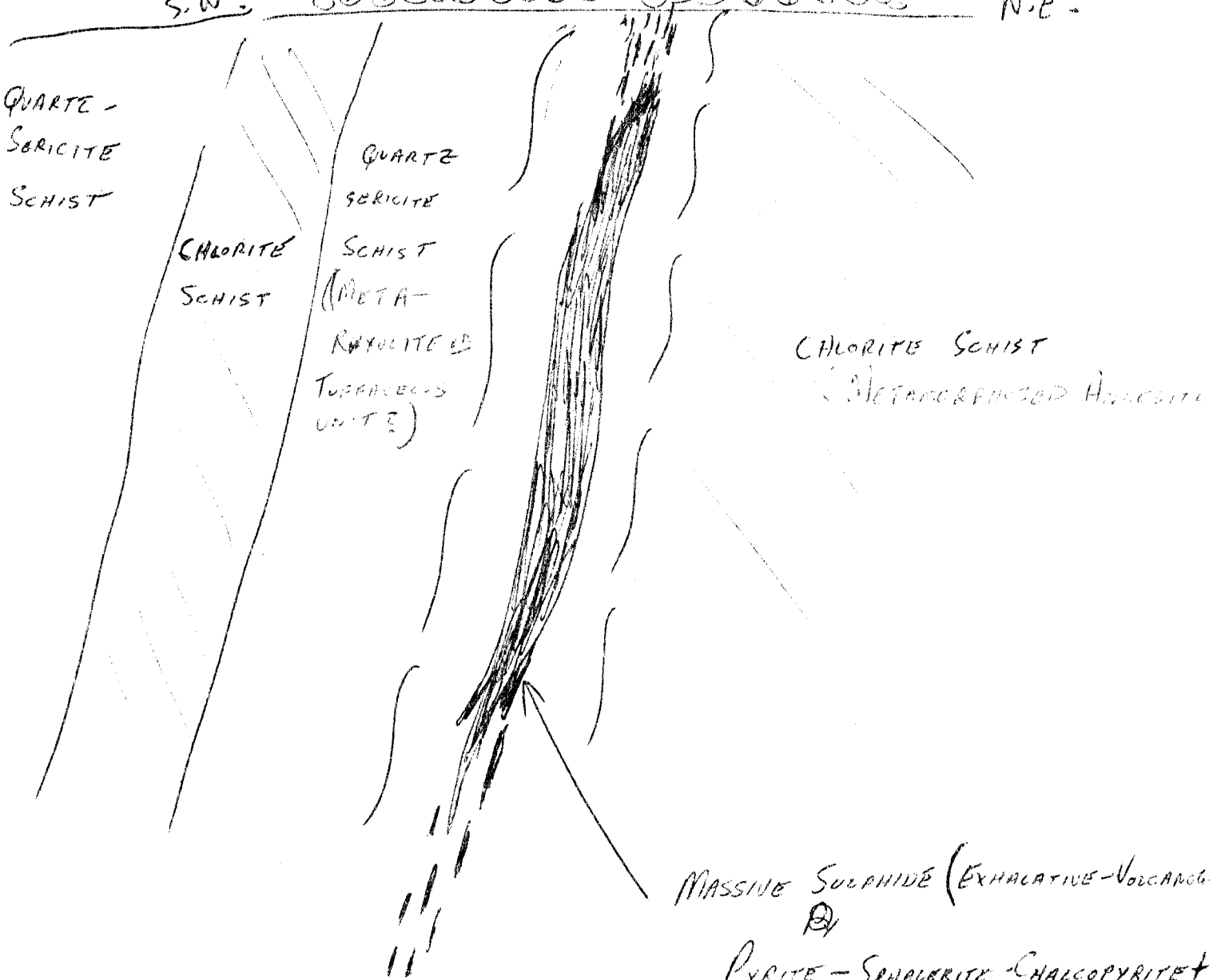
CHLORITE
SCHIST

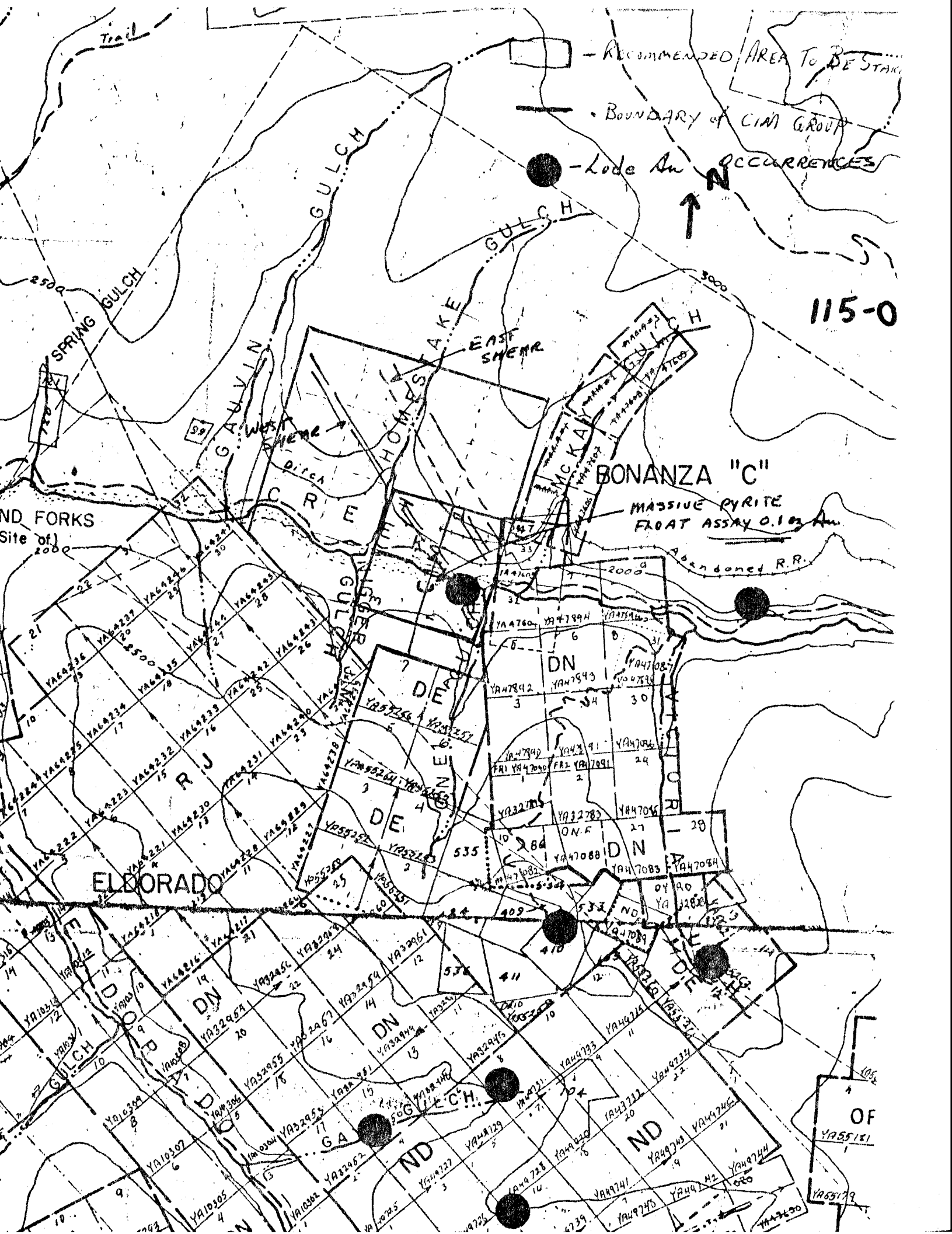
QUARTZ
SERICITE
SCHIST
(META-
RAYOLITE &
TUFFALOUS
UNITE)

CHLORITE SCHIST
(METAMORPHOSIS AND ANOMALY)

MASSIVE SULPHIDE (EXHALATIVE-VOLCANIC)
Ⓟ

PYRITE - SPHALERITE - CHALCOPYRITE ±





Trail

RECOMMENDED AREA TO BE STAKED

BOUNDARY of CIA GROUP

Lode Au OCCURRENCES

115-0

ND FORKS
Site of
2000

BONANZA "C"

MASSIVE PYRITE
FLOAT ASSAY 0.1% Au

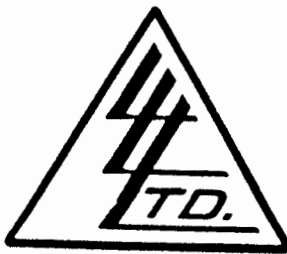
Abandoned R.R.

ELBORADO

OF
YAS5151

YAS5179

TO: DAWSON ELDORADO GOLD EXPLORATION
 910, 610 - 8th Avenue S.W.,
 Calgary, Alberta T2P 1G5
 Attn: Paul White



File No. 25616
 Date November 1, 1983
 Samples Rock

Certificate of
ASSAY OF
LORING LABORATORIES LTD.

SAMPLE No.	OZ./TON GOLD	OZ./TON SILVER	% Pb	% Cu	
<u>Rock Samples</u>					
6676	Trace	Trace	-	.02	} CIM claims
6676A	Trace	Trace	-	-	
6676B	Trace	.01	-	-	
6677	Trace	Trace	-	-	
6677A	Trace	Trace	-	-	
6677B	Trace	.01	-	-	
6678	-	633.62	66.76	-	} PLATA
6679	-	390.86	73.04	-	
6680	.208	15.34	-	-	} CLAIMS
6681	.264	43.82	-	-	
<p>I Hereby Certify THAT THE ABOVE RESULTS ARE THOSE ASSAYS MADE BY ME UPON THE HEREIN DESCRIBED SAMPLES</p>					

Retained one month.
 Retained one month
 specific arrangements
 in advance.

D. Enders

Assayer

CERTIFICATE OF EXPENDITURES

I, PAUL S. WHITE, MINING ENGINEER, OF THE CITY OF CALGARY
IN THE PROVINCE OF ALBERTA DO HEREWITH CERTIFY THAT:

I DID CAUSE TO BE EXPENDED A SUM IN EXCESS OF \$ 1000.00 (One
Thousand dollars) on wages for Eric Huggard and Steven Smith,
subsistence expenses for them, assay costs, truck rental and
fuel costs, and supervision by myself,

all expended on the CIM 1-4 inclusive mineral claims for
prospecting, mapping pitting and geology between the dates
of May 21, 1983 and June 6, 1983. and have applied for
8 claim years in total for representation work by prior
application.

Certified at Whitehorse YT this 20 Day of December



Paul S. White P. Eng.