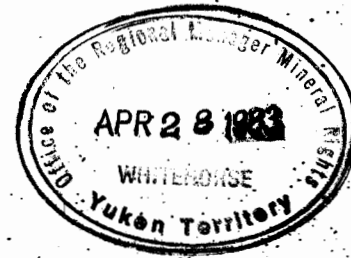


FROM: Mining Recorder of

TO: Supervising Mining Recorder of Whitehorse, Y.T.



FOR ACTION ARE:

- NEW APPL'N for PLACER LEASE to PROSPECT: Name: _____ Lease No.
- RENEWAL APPL'N PLACER LEASE to PROSPECT: Name: _____ Lease No.
- AFFIDAVIT of EXPENDITURE on PLACER LEASE. Name: _____ Lease No.
- ASSIGNMENT of PLACER LEASE No.
From: _____ To: _____

GROUPING APPL'N UNDER SEC. 52(2) PLACER MINING ACT.
Owner: _____

DIAMOND DRILL LOGS:

Claims: *Juvenile*

Claim sheet no: *105.D-1*

J.M. - J.

QUARTZ ASSESSMENT REPORT:

Claims: _____

Claim sheet no. _____

Type of report: _____

Submitted by: *Logan Mines Ltd*

Cls. work performed on: _____

\$ Req. for ren. application _____

Stan Fisher

Signature *for M.R.*

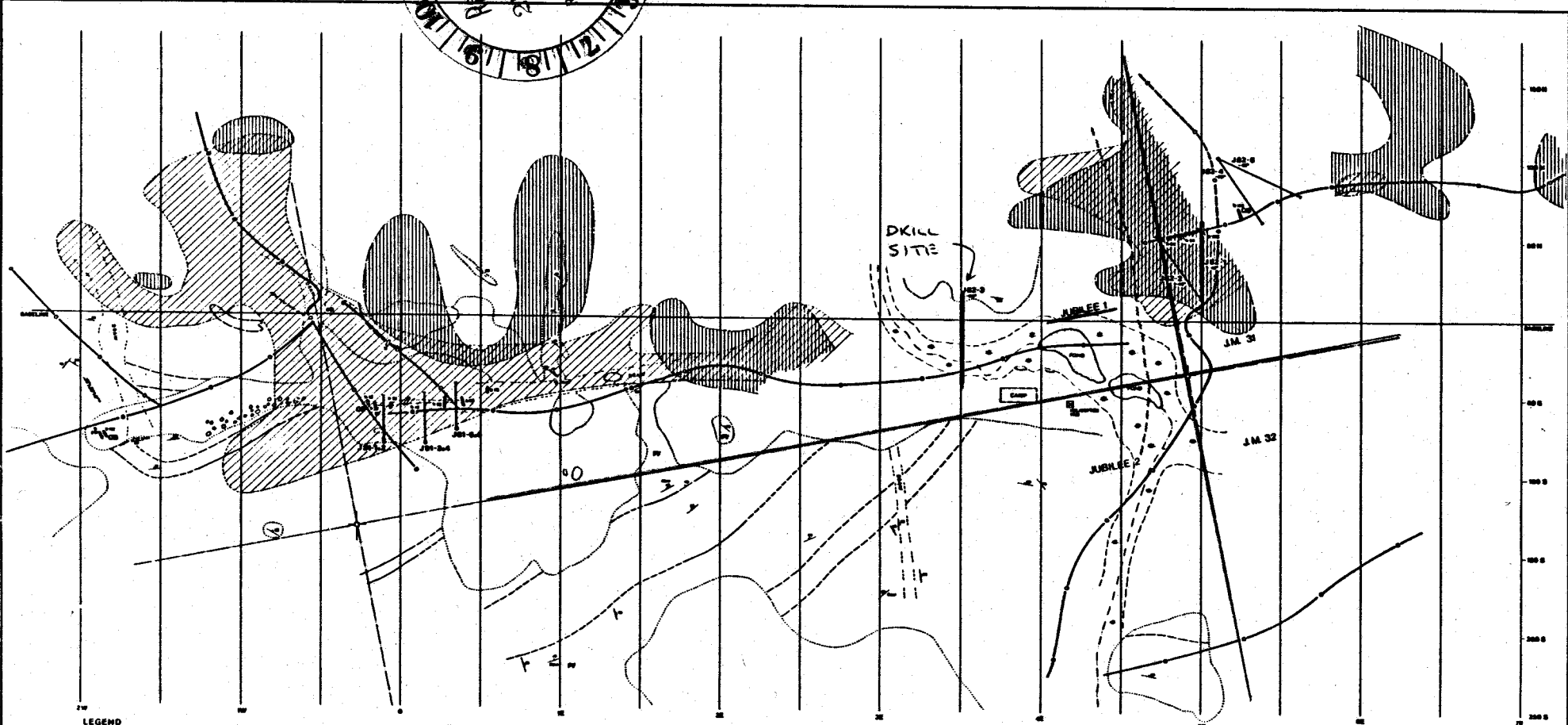
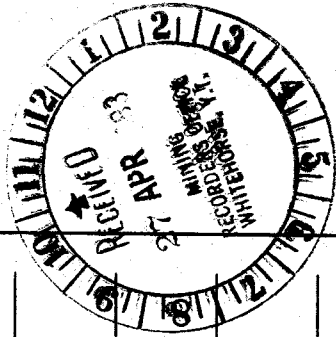
Date Ret. _____

REPLY ACTION:

DATE DUE
Dec 14 2002

091451

Signature



- LEGEND**
- | | | |
|--|------------------------------|---------------------------|
| Amorphous, often whitish, fractured, rusty | Geological contact inferred | Trench |
| Chert | Outcrop boundary | Diamond drill hole |
| Chalkyrite | Bedding and/or volcanic flow | Ore |
| Pyroxene | Fracture | E-W boundary |
| Quartz | Open fracture | Geophysical grid anomaly |
| Massive amphibole and chalkyrite | Fault and/or shear zone | Geophysical major anomaly |
| Overburden | Core rock take | |

LOGAN NINES LAG / GOLDEN SLIPPER BRIBKCSB Inc.
JOINT VENTURE

JUBILEE MOUNTAIN PROPERTY
COMPOSITE PLAN

INTRODUCTION B.L. 11 475 08/81
TOMORROW'S RES. INC ENGINEERS LTD VANCOUVER, B.C.
MAY November 1982 SCALE 1:5000 2

Jubilee 1.

CANADA) IN THE MATTER OF A DIAMOND
)
 YUKON TERRITORY) DRILLING PROGRAM ON JUBILEE
)
 TO WIT) MOUNTAIN

I, HAROLD S. AIKINS, of 305 - 535 Thurlow Street,
 in the City of Vancouver, Province of British Columbia, DO
 SOLEMNLY DECLARE:

THAT attached hereto, this my Affidavit,
 marked Appendix "A", is a voucher detailing the direct
 costs incurred in drilling Hole J 82-3 on the Jubilee 1
 mineral claims, which I certify to be correct to the best
 of my knowledge and belief.

DECLARED BEFORE ME at the City)
 of Vancouver, British Columbia)
 this day of April, 1983.)
)
)
)
)
)

H.S.A. Aikins
 Harold S. Aikins

 Commissioner for taking Affi-
 davits within British Columbia.



APPENDIX "A"

ACE DRILLING LTD.

1 - 1599 Pemberton Avenue
North Vancouver, B. C. V7P 2S5

October 28th, 1982

IN ACCOUNT WITH:

LOGAN MINES LTD.
305 - 535 Thurlow Street
Vancouver, B. C. V6E 3L2

Re: Jubilee Project

Direct drilling charges in accordance with
contract terms:

J-82-1		
0 - 232' @ \$22.50/foot		\$ 5,220.00
J-82-2		
0 - 230' @ \$22.50/foot		5,175.00
J-82-3		
0 - 347' @ \$22.50/foot		7,807.50
J-82-4		
0 - 257' @ \$22.50/foot		5,782.50
J-82-5		
0 - 260' @ \$22.50/foot		<u>5,850.00</u>
TOTAL 1,326' @ \$22.50/foot		\$ 29,835.00
	LESS Advance	<u>7,500.00</u>
		\$ 22,335.00
	LESS payment on account	<u>20,000.00</u>
	BALANCE	\$ <u><u>2,335.00</u></u>

*CK
HSA*

Additional charges for supplies, stand-by time,
travel and expenses will be invoiced separately.

*Paid Nov 1/82
CK # 666 \$12,144.80*

DIAMOND DRILL RECORD

091451

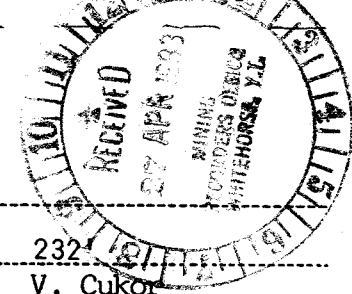
COMPANY LOGAN MINES LTD.
GOLDEN SLIPPER RESOURCES INC.

PROPERTY Jubilee

Hole No. J 82-1
Date Begun October 4, 1982
Date Finished October 6, 1982
Drill Hydra Wink
Core Size B. Q.

Lat. 14 N
Dep. 500 E
Bearing 3°
Elev. Collar
Dip -45°

Total Depth 232'
Logged by V. Cukor
Date October 8, 1982
Claim J.M. 31



NVC engineering ltd.
VANCOUVER, B.C.

DEPTH	Core Recovered		DESCRIPTION	SAMPLE No.
	Feet	%		
0 - 15	-	-	Casing.	
15 - 31	15	94	Andesite, dark, greenish grey, silicious, brecciated. Throughout the interval observed is a stockwork of hairline fractures healed with silica. A minor amount of sulfides present (mostly pyrrhotite with some grains of chalcopyrite). Rust appears along fracture planes. Core is fractured and is recovered in small fragments till 26 ft. From 26 ft. to end, core is more solid.	
31 - 37	6	100	Chert, brownish, fractured but well healed. Greenish to almost black chlorite, as well as some sulfides, appear in the fractures. Some small sulfides are disseminated into rock as well.	
37 - 74	37	100	Dark andesite, cherty andesite and narrow zones of chert. Rock is fractured and somewhat brecciated. Silicification, brown hornfels and dark chlorite appear throughout and some sulfides appear along fractures. Pronounced foliation is measured at 20 - 30° to C.A., and are often alined with fine sulfides, chlorite and/or silica. Some fracture planes are stained with iron oxides. From 40 to 41 ft. is good pyrrhotite with some chalcopyrite specks. Better sulfides are also at 50 to 51 ft., 52 - 54 ft., and 56 ft. to the end of interval. This last section contains about 2% of sulfides in stockwork, where chalcopyrite content increases and also some isolated arsenopyrite crystals appear.	

DEPTH	Core Recovered		DESCRIPTION	SAMPLE No.
	Feet	%		
74 - 108	34	100	Chert, greyish to greenish, fairly brecciated. Stockwork of hairline fractures is filled with silica and sulfides. Content of sulfides increases and zones of good chalcOPYrite (90 to 94 ft.) and arsenOPYrite (94 to 98 ft.) appear in the fractures and as disseminations. At 98 ft. is band of 4.5" of hydrothermal quartz with about 50% of arsenOPYrite. At 102 ft. large crystals of arsenOPYrite are imbedded into rocks. From 105 ft. to end of interval some arsenOPYrite and/or chalcOPYrite is disseminated into rock.	0301 0302
108 - 139	29	94	Brecciated hornsfeld volcanic, silicious, with fine pyrite and pyrrhotite found along the hairline fractures. Contact to upper zone is sharp at about 20° to C.A. Core is solid and it is recovered in pieces of up to 1 ft. long. At 119 to 122 ft. there is a fracture almost parallel to core filled with ¼" quartz. At 126 to 127 ft. core is broken. Foliation is prominent at about 40° to C.A., and even more pronounced by aligned brown hornfels, dark chlorite and silica alterations. Locally sulfides appear as well. In places, foliation is wavy. At 134 ft. there is silicious zone with some fine purite cubes.	
139 - 212	73	100	Light, greenish chert, with some narrow sections of brecciated volcanic. Rock is fractured and healed with silica. Some chlorite and/or sulfides appear in fractures. Some fractures also carry serpentine, calcite, gypsum, tremolite and/or kaolin. From 143 to 144.5 ft. good pyrrhotite is accompanied with chalcOPYrite. Along one fracture within this interval, some ground up sulfides are found. From 144.5 to 147 ft. very broken core with white crystallized quartz at the end. From 147 to 150 ft. there is good arsenOPYrite with some chalcOPYrite. This includes a 3" zone of massive arsenOPYrite at 35° to C.A. From 152 to 160 ft. there is a stockwork of pyrrhotite with some arsenOPYrite. From 167 to 170 ft. - broken rock. From 171 to 186 ft. fair to very good chalcOPYrite in fractures,	0303 0304 0311 0312 0313 0314 0315

DEPTH	Core Recovered		DESCRIPTION	SAMPLE No.
	Feet	%		
			and disseminated, with very good arsenopyrite from 179.5 to 181 ft. and 183 to 184.5 ft. The zone from 182.5 to 183 ft. is broken. In this section brecciation and shearing increases. Some slickensides are found with sulfides along the planes (some sulfide crystals subsequently sheared). At 190 ft. a 3/4" band of solid arsenopyrite at 35° to C.A.	0316 0305 0306
			At 195 ft. there is another band of arsenopyrite at 20° to C.A. Rock is again more fractured and serpentization appears. From 200 to 201.5 ft. is grey gouge and so is at 204 and 205 ft.	0317 0318 0307
			From 207 ft. there is shearing at 35° to C.A. and at 209 ft. it is changing to 15°. Fairly good chalcopyrite still prevails in irregular fractures. Serpentinization and silicification are more intense.	0319 0320 0321
212 - 218.5	4	62	Mineralized zone - arsenopyrite, chalcopyrite, white quartz in coarse calcite crystals (at 214 ft. ground up large clear calcite crystals). Fair amount of arsenopyrite was ground up (the rods were pulled four times in this section at 212, 213, 214 and 217 ft.)	0308
218.5 - 220.5	2	100	Chert as in the section prior to zone.	0309
220.5 - 232	11	96	Green volcanic, fractured, but much less intense than previous sections. Content of sulfides very low.	
232			End of hole.	

ASSAY LOG

COMPANY LOGAN MINES LTD.

PROPERTY Jubilee

HOLE No. J 82-1

GOLDEN SLIPPER RESOURCES INC.

NVC engineering ltd.

ASSAYED by General Testing Laboratories

DATE Oct. 15 -

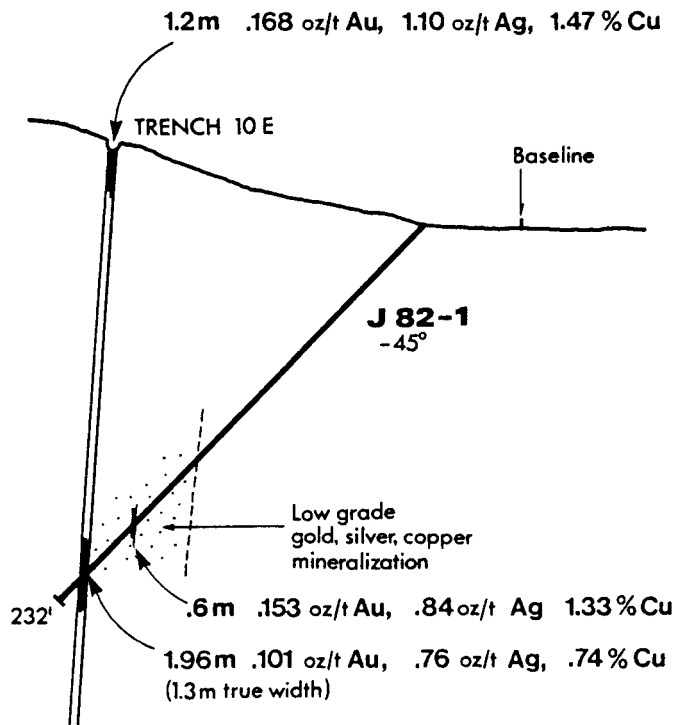
VANCOUVER, B.C.

Nov. 3, 1982

SAMPLE No.	From	To	Feet	Au. oz/t	Ag.oz/t	Cu. %					
0301	90	94	4	.018	.10	.35					
0302	94	98	4	.010	.10	.10					
0303	143	144.5	1.5	.008	.28	.75					
0304	147	150	3	.032	.20	.20					
0311	150	155	5	.002	.08	.26					
0312	155	160	5	.002	.10	.27					
0313	160	165	5	.002	.08	.22					
0314	165	170	5	.002	.09	.23					
0315	170	175	5	.005	.05	.21					
0316	175	180	5	.005	.08	.12					
0305	180	183	3	.040	.20	.41					
0306	183	185	2	.153	.84	1.33					
0317	185	189	4	.008	.10	.27					
0318	189	193	4	.005	.15	.23					
0307	193	198	5	.034	.64	.73					
0319	198	203	5	.010	.15	.23					
0320	203	208	5	.014	.26	.40					
0321	208	212	4	.005	.07	.21					
0308	212	218.5	6.5	.101	.76	.74					
0309	218.5	220.5	2	.030	.44	.19					
Averages	147.0	220.5	71.5	.021	.225	.34					
	180	198	18	.036	.36	.53					
	212	220.5	8.5	.084	.68	.61					

N

S



Section Line 5E

LOGAN MINES Ltd.
/GOLDEN SLIPPER RESOURCES Inc.
JOINT VENTURE
JUBILEE MOUNTAIN PROPERTY
J 82-1 Drill Section

WHITEHORSE M.D.,Y.T.

NTS 105 D/1

V.CUKOR, P.Eng. - NVC ENGINEERING Ltd. - VANCOUVER, B.C.

DATE: Nov. 1982

SCALE: 0 10 20 meters

FIG.

8

DIAMOND DRILL RECORD

COMPANY LOGAN MINES LTD.
GOLDEN SLIPPER RESOURCES INC.

PROPERTY Jubilee

Hole No. J 82-2
Date Begun October 7, 1982
Date Finished October 9, 1982
Drill Hydra Wink
Core Size B. Q.

Lat. 14 N
Dep. 500 E
Bearing 335°
Elev. Collar
Dip -45°
Total Depth 230'
Logged by V. Cukor
Date October 11, 1982
Claim J.M. 31

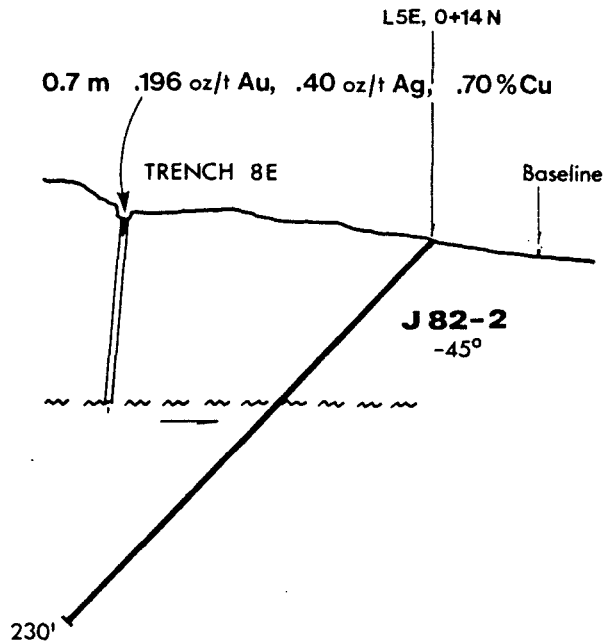
NVC engineering ltd.
VANCOUVER, B.C.

DEPTH	Core Recovered		DESCRIPTION	SAMPLE No.
	Feet	%		
0 - 20	0	-	Casing.	
20 - 38	18	100	Volcanic, bluish grey, fractured, with rust on the fracture planes. Rock is brecciated in appearance. Quartz veinlets appear throughout. Foliation is prominent and changing from 25° - 15° to C.A. Core is broken in a top part and more solid toward the end of interval. At the interval rock becomes somewhat vuggy.	
38 - 92	50	93	Chert, greyish brown, and cherty andesite. Rock is still brecciated. Rock is solid from the top and broken toward the end of the interval. From 43 to 78 ft. appears good sulfide mineralization along fractures and some as dissemination. Most is pyrrhotite, but some chalcopyrite and minor arsenopyrite appears as well (better chalcopyrite is at 62 - 67 ft. and from 72 to 75 ft.) Some epidote, chlorite and serpentine appear in fractures. Among sulfides some marcasite appears as well. From 81 to 83 ft. rock is broken and rusty and contains quartz crystals. From 86 to 89 ft. core is recovered as fragments with 1.5 ft. of ore lost. At 89 ft. is vug with coarse calcite crystals.	0310
92 - 102	8	80	Fault zone - gouge, breccia, broken rock. From 92 - 94 ft. is gouge and then breccia. At 97 - 98 ft. is good pyrrhotite with some chalcopyrite. From 98 to 100 ft. is bleached, oxidized, silicified rock, with 1 foot of pyritic gouge. The last foot of the interval fragments with pyrrhotite.	

DEPTH	Core Recovered		DESCRIPTION	SAMPLE No.
	Feet	%		
102 - 121	17	89	Chert, greyish, greenish or brownish. Some pyrrhotite at the start of interval and then weakens. Quartz appears in fractures as well as calcite. Rock is strongly brecciated.	
121 - 138	8	47	Gouge, breccia and ground up quartz.	
138 - 222	60	71	Greenish chert and dark volcanic rock, silicified, very fractured, vuggy, rusty on fracture planes. No sulfides. Most of rock is recovered as fragments and recovery is poor. Drilling was very slow in this section. In some locations large quartz or calcite crystals occupy open vugs. This seems to be still part of the fault zone.	
222 - 230	8	100	The same rock as above - solid. No sulfides.	
230			End of hole.	

N 25°W

S 25°E



V. Cukor

**LOGAN MINES Ltd.
/GOLDEN SLIPPER RESOURCES Inc.
JOINT VENTURE
JUBILEE MOUNTAIN PROPERTY
J 82-2 Drill Section**

WHITEHORSE M.D., Y.T.

NTS 105 D/1

V. CUKOR, P. Eng. - NVC ENGINEERING Ltd. - VANCOUVER, B.C.

DATE: Nov. 1982

SCALE: 0 10 20 meters

FIG.

9

DIAMOND DRILL RECORD

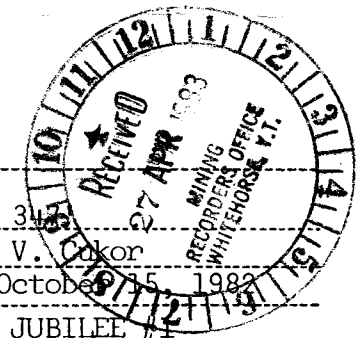
COMPANY LOGAN MINES LTD.
GOLDEN SLIPPER RESOURCES INC.

PROPERTY Jubilee

Hole No. J 82-3
 Date Begun October 10, 1982
 Date Finished October 13, 1982
 Drill Hydra Wink
 Core Size B. Q.

Lat. 12 N
 Dep. 350 E
 Bearing 180°
 Elev. Collar
 Dip -60°

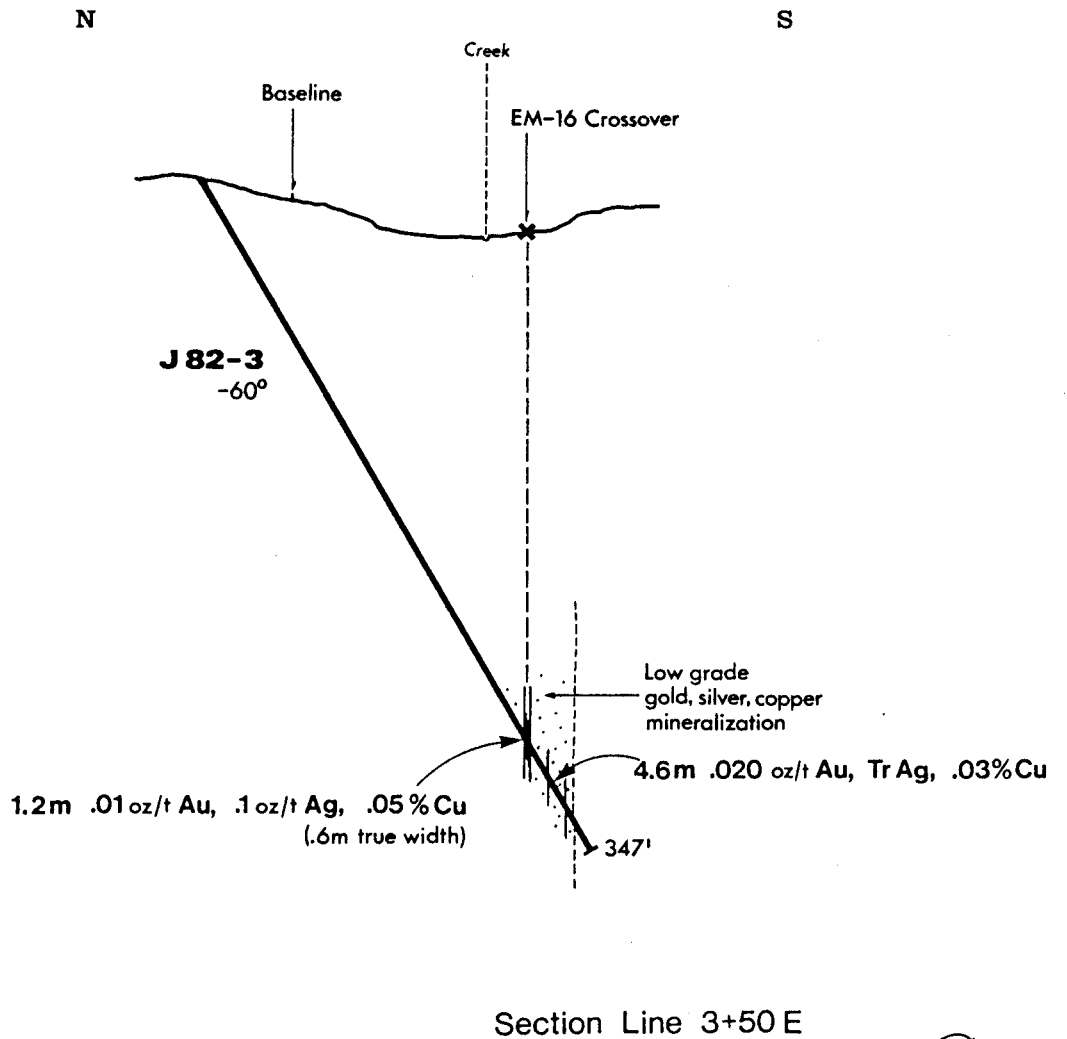
Total Depth 311
 Logged by V. Cokor
 Date October 15, 1982
 Claim JUBILEE



NVC engineering ltd.
 VANCOUVER, B.C.

DEPTH	Core Recovered		DESCRIPTION	SAMPLE No.
	Feet	%		
0 - 4	-	-	Casing.	
4 - 104	100	100	Andesite, bluish green in places slightly fractured. Mostly solid rock and well recovered. From the start of the interval, fractures are coated with limonite. Some calcite and quartz appear along fractures as well.	
104 - 110	5.8	97	Chert, light greyish to buff. Both contacts are extremely irregular. Toward the end of interval several pieces are broken up and rounded.	
110 - 177	67	100	Andesite as at the top of the hole, solid, well recovered. Occasional tight fractures are filled with chlorite, calcite and/or quartz.	
177 - 205	28	100	Chert, as above, but fracturing is much more pronounced. Stockwork of fractures is healed by quartz, giving rock, in places, brecciated appearance. Toward the end, small sections of silicified andesite are found.	
205 - 265	60	100	Andesite, greenish, solid. More fractures with quartz. Contact to unit above is extremely irregular. More chlorite appears as well. Some rock is serpentized.	
265 - 286	21	100	Chert, very fractured, brecciated. Quartz and chlorite occupy most of fractures. Toward the end of interval, cherty andesite appears with brownish hornfelaic alterations. Some minor pyrrhotite appears as well.	

DEPTH	Core Recovered		DESCRIPTION	SAMPLE No.
	Feet	%		
286 - 290	3.5	88	Mineralized shear zone; vuggy quartz, large calcite crystals, chloritic gouge, serpentized andesite broken to small fragments. Some sulfides appear as well. Suspected some of sulfides washed out and lost. Some quartz crystals are of light green colour.	0322
290 - 299	9	100	Cherty andesite, with brownish hornfels alteration. Chlorite and serpentine appear in fractures.	0323 0324
299 - 304	5	100	Chert, fractured with chlorite along fractures. Some minor sulfides appear toward the end of interval.	0325
304 - 347	43	100	Andesite, in places fractured, with light green chlorite in fractures. Locally rock is strongly silicified. From the start of interval, appear zones of fair, pyrrhotite with some minor chalcopyrite. Toward the end, sulfides disappear.	0326 0327 0328 0329 0330 0331
347	-	-	End of hole.	



V.C.

LOGAN MINES Ltd.
/GOLDEN SLIPPER RESOURCES Inc.
JOINT VENTURE
JUBILEE MOUNTAIN PROPERTY
J 82-3 Drill Section

WHITEHORSE M.D., Y.T.

NTS 105 D/1

V. CUKOR, P.Eng. - NVC ENGINEERING Ltd. - VANCOUVER, B.C.

DATE: Nov. 1982

SCALE: 0 10 20 meters

FIG. 10

DIAMOND DRILL RECORD

COMPANY LOGAN MINES LTD.
GOLDEN SLIPPER RESOURCES INC.

PROPERTY Jubilee

Hole No. J 82-4
 Date Begun October 15, 1982
 Date Finished October 17, 1982
 Drill Hydra Wink
 Core Size B. Q.

Lat. 104 N
 Dep. 510 E
 Bearing 295°
 Elev. Collar
 Dip -50°

Total Depth 257'
 Logged by V. Cukor
 Date October 24, 1982
 Claim J.M. 31

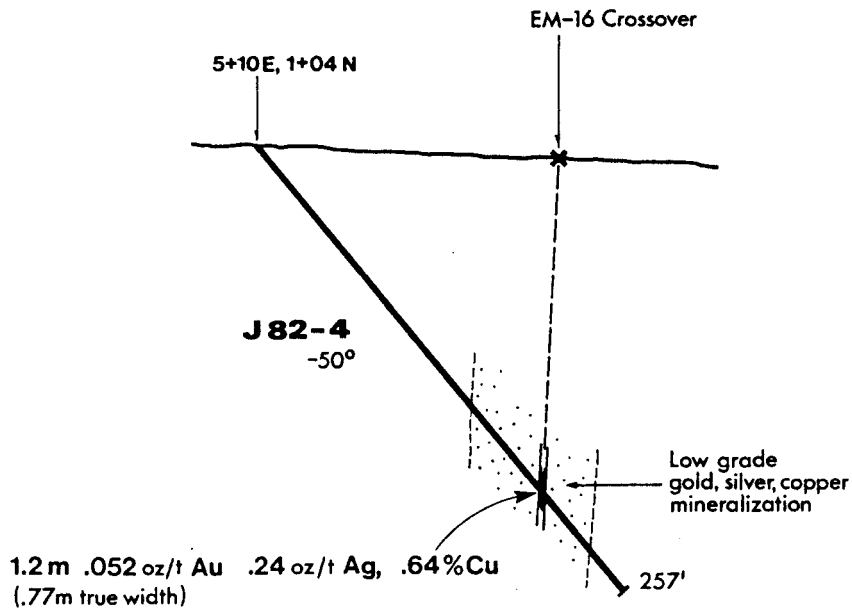
NVC engineering ltd.
 VANCOUVER, B.C.

DEPTH	Core Recovered		DESCRIPTION	SAMPLE No.
	Feet	%		
0 - 7	-	-	Casing.	
7 - 197	180	95	<p>Grey andesite, silicious, in places cherty. From the start of interval rock is more fractured and rusty along the fracture planes. Folliations are noted at 30° - 60° to C.A., changing rapidly. In places rock is serpentized. At 45' there is 1" band of pyrrhotite with some chalcopryrite and arsenopyrite, at 50° to C.A. Throughout the interval there is some minor, very fine chalcopryrite and pyrrhotite disseminated into rock. Chlorite is noted throughout and some sparce epidote crystals are occasionally noted as well. At 57' there is 4" zone fractured and subsequently healed by coarse calcite. At 59' there is 3" of broken core. At 62.5' is open vug with calcite crystals. Rock becomes progressively more silicious. At 87' there is 1' of brecciated rock with grey gouge, with sharp contact to solid rock at 45° to C.A. Several narrow fractures filled with calcite parallel this contact. Elsewhere in the interval, the fractured rock with calcite, limonite gouge and chlorite appears from 68 to 69' and 93 to 97'. From 97 to 102' serpentized rock is poorly recovered (1' of core from 5' sections). From 108' volcanic is again serpentized and hornfels altered. At 118' is a fracture with limonitic gouge. From 120' some pyrrhotite starts appearing in fractures, and seldom as fine disseminations. Some chalcopryrite, disseminated, appears as well. At 129.5' to 132' is ½" fracture filled with quartz almost parallel to core.</p>	

DEPTH	Core Recovered		DESCRIPTION	SAMPLE No.
	Feet	%		
			From 150' amount of sulfides slightly increases. At 162 and 167' fractures are filled with calcite (latest one has also small quartz pyramids). Narrow bands of sulfides and/or calcite appear at 40 to 50' to C.A., in average $\frac{1}{4}$ " to $\frac{1}{2}$ " thick. From 170' there are two feet of broken core. At 176' is 1' of rock with hydrothermal quartz and some sulfides, with better chalcopyrite. From 180' some arsenopyrite appears as well.	0332 0333 0334 0355 0336 0337 0338 0339
			At 193' is fractured rock with calcite and some sulfides. Til the end of interval silicification, fracturing and calcite intensive.	0340 0341
197 - 201	3.8	95	Shear zone, with very fractured rock, arsenopyrite and chalcopyrite. Two feet of nearly solid arsenopyrite appears in calcite. Some gouge with ground up sulfides appear as well.	0342 0343
201 - 257	50	89	Andesite and cherty andesite, fractured, with chalcopyrite mostly is stockwork of hairline fractures. Fractures of up to $\frac{1}{4}$ ", filled with sulfides (mostly pyrrhotite) are present at 203, 209, 220 - 222 and 225 - 227 feet.	0344 0345 0346 0347 0348
			From 215' the rock becomes very cherty, and is greenish in colour. Toward the end fracturing increases and from 250' to the end and vuggy with calcite and/or quartz crystals and some with chloritic gouge appear.	
257	-	-	End of hole.	

N 65°W

S 65°E



V. Cukor

LOGAN MINES Ltd.
/GOLDEN SLIPPER RESOURCES Inc.
JOINT VENTURE
JUBILEE MOUNTAIN PROPERTY
J 82-4 Drill Section

WHITEHORSE M.D., Y.T.

NTS 105 D/1

V. CUKOR, P.Eng. - NVC ENGINEERING Ltd. - VANCOUVER, B.C.

DATE: Nov 1982

SCALE: 0 10 20 meters

FIG.

11

DIAMOND DRILL RECORD

COMPANY LOGAN MINES LTD.
GOLDEN SLIPPER RESOURCES INC.

PROPERTY Jubilee

Hole No. J 82 -5
 Date Begun October 17, 1982
 Date Finished October 19, 1982
 Drill Hydra Wink
 Core Size B. Q.

Lat. 104 N
 Dep. 510 E
 Bearing 322°
 Elev. Collar _____
 Dip -45°
 Total Depth 260'
 Logged by V. Cukor
 Date October 25, 1982
 Claim J.M. 31

NVC engineering ltd.
 VANCOUVER, B.C.

DEPTH	Core Recovered		DESCRIPTION	SAMPLE No.
	Feet	%		
0 - 7	-	-	Casing.	
7 - 178	168	98	Volcanic, greenish grey, brecciated in appearance, silicified, locally cherty. Some foliation noted at 45° to C.A., but angle is in places changing from 30° to 60°. From the start of the interval to 12 feet, rock is extremely fractured, with limonite stain on fracture plains. Core is recovered in small fragments. After 12 feet rock is mostly solid with good core recovery. At 37 feet there is ½" wide fracture filled with quartz at 15° to C.A. From 55 to 62 feet rock is more cherty. At 57 feet there is a 1" band of nearly solid chalcopyrite and pyrrhotite at 35° to C.A. From that point rock becomes more altered (serpentinized) and appears to be brecciated. Bands, ¼" to ½" wide, of white quartz appear more often. At 86 feet is vug with calcite crystals and at 87 feet is an open fracture with calcite crystals. From 132 to 137 feet hairline fractures are filled with pyrrhotite and some chalcopyrite. At 141 feet there is a ¼" band of sulfides at 35° to C.A. From 141 to 145 feet rock is fairly intensely fractured. At 158 feet there is a 1 foot zone of stockwork of hairline fractures with chalcopyrite and pyrrhotite.	
178 - 196	16	89	Chert, greenish in colour, with dark chlorite patches, fractured. Contact to the upper zone is sharp at 55° to C.A. Some pyrite and pyrrhotite is disseminated and in fractures. At 185.5 feet there is 6" of gouge with some sulfides. Rock becomes progressively more fractured and brecciated.	

DEPTH	Core Recovered		DESCRIPTION	SAMPLE No.
	Feet	%		
196 - 199	3	100	Fractured cherty volcanic.	
199 - 240	41	100	Chert and cherty volcanic, light greenish grey with dark patches. Rock is fractured, chloritized, serpentinized and contains calcite stringers. At 205 feet there is 1" fracture with gouge and sulfides. From 220 feet to the end of interval sulfide bands become more frequent.	0348 0350 0351 0352
240 - 246	5	83	Shear zone, mineralized. Grey gouge appears until 241 feet, followed by fractured rock with sulfides, nearly massive to massive arsenopyrite with chalcopyrite and with calcite and quartz. Follows fractured rock healed with sulfides and fractured rock with gouge and ground up sulfides toward the end.	0353
246 - 260	14	100	Chert as above the shear zone. Sulfide mineralization sharply ends at the end of previous interval, but at 258.5 feet is 1½" band of pyrrhotite, arsenopyrite and some chalcopyrite.	0354
260			End of hole.	

N 38° W

S 38° E

EM-16 Crossover

5+10E, 1+04 N

J82-5
-45°

Low grade
gold, silver, copper
mineralization

1.8 m .058 oz/t Au, .22 oz/t Ag, .48 % Cu
(1.0 m true width)

260'

LOGAN MINES Ltd.
/GOLDEN SLIPPER RESOURCES Inc.
JOINT VENTURE
JUBILEE MOUNTAIN PROPERTY
J 82-5 Drill Section

WHITEHORSE M.D., Y.T.

NTS 105 D/1

V. CUKOR, P.Eng. - NVC ENGINEERING Ltd. - VANCOUVER, B.C.

DATE: Nov. 1982

SCALE: 0 10 20 meters

FIG. 12