

COMINCO LTD.

EXPLORATION

WESTERN DISTRICT
September 2, 1976

DIAMOND DRILL ASSESSMENT REPORT

ON THE

CAN, HW and PING GROUP OF MINERAL CLAIMS

BONNET PLUME RIVER AREA

YUKON TERRITORY

N.T.S. 106C/11

64° 38' Latitude
133° 16' Longitude

Period of Work: July 21, 1976 to August 12, 1976

Vancouver, British Columbia

M.S. Travis

091301

COMINCO LTD.

EXPLORATION

WESTERN DISTRICT

September 2, 1976

DIAMOND DRILLING 1976

This report is submitted in order to fulfill the requirements for assessment work on the below-mentioned claims due on January 18, 1977 and April 1, 1977 and September 24, 1976.

Using a Boyles Brothers 17-A drill taking BQ core, a series of 5 diamond drill holes totalling 1498 feet were drilled on the PING claims during the period from July 21, 1976 to August 12, 1976 including mobilization time. All core including the remainder of those sections split for assay is stored on the property located at 64° 38' 15"N, 133° 16' 22"W on the south side of Black Canyon Creek.

The accompanying diamond drill logs include detailed geologic descriptions of the rocks intersected as well as all assay results. All rocks intersected in the drilling are dolomites or fine clastic sediments and belong to the Upper Proterozoic (Hadrynian) Keele Formation.

A surface plan at a scale of 1 inch = 1000 feet locates the 5 holes drilled in 1976 with respect to the claim boundaries on claims PING 8 and 9. The distribution of footage drilled is as follows:

<u>HOLE</u>	<u>BEARING</u>	<u>DIP</u>	<u>FOOTAGE</u>	<u>CLAIM</u>
DDH 76-1	080°	-67°	425 ft.	PING 8
DDH 76-2	136°	-70°	432 ft.	PING 8
DDH 76-3 (original)	055°	-56°	19 ft.	PING 9
DDH 76-3 (reset)	055°	-50°	331 ft.	PING 9
DDH 76-4	090°	-45°	287 ft.	PING 9

Attached to this report are location maps at scales of 1 inch = 80 miles and 1 inch = 8 miles and a topographic map on the PING group showing drill sites and core storage location. Also included is a Statement of Expenditures incurred during the period from July 21, 1976 to August 12, 1976 supported by an Affidavit.

Report by: Steve Travis
M.S. Travis
Geologist

Endorsed by: D.W. Heddle
D.W. Heddle
Chief Geologist

Approved for
Release by: W.T. Irvine
W.T. Irvine, Manager
Exploration, Western District

MST/aa
Attach.

IN THE MATTER OF THE
YUKON QUARTZ MINING ACT

AND

IN THE MATTER OF A DIAMOND DRILL SURVEY
CARRIED OUT ON MINERAL CLAIMS PING 1-26
Located in the Mayo Mining District of the
Yukon Territory
More Particularly, NTS 106C/11

A F F I D A V I T

I, STEVEN TRAVIS OF THE DISTRICT OF NORTH VANCOUVER IN THE PROVINCE OF BRITISH COLUMBIA, GEOLOGIST, MAKE OATH AND SAY:

- 1. THAT I AM EMPLOYED AS A GEOLOGIST BY COMINCO LTD. AND, AS SUCH HAVE A PERSONAL KNOWLEDGE OF THE FACTS TO WHICH I HEREINAFTER DEPOSE;
- 2. THAT ANNEXED HERETO AND MARKED AS EXHIBIT "A" TO THIS MY AFFIDAVIT IS A TRUE COPY OF EXPENDITURES ON A DIAMOND DRILL SURVEY CARRIED OUT ON MINERAL CLAIMS PING 1-26;
- 3. THAT THE SAID EXPENDITURES WERE INCURRED BETWEEN THE 21ST DAY OF JULY, 1976 AND THE 12TH DAY OF AUGUST , 1976 FOR THE PURPOSE OF MINERAL EXPLORATION ON THE ABOVE NOTED CLAIM GROUP;
- 4. THAT SAID EXPENDITURES WERE INCURRED BY COAST COPPER CO. LTD., A SUBSIDIARY COMPANY OF COMINCO LTD., ACTING AS AN AGENT FOR BOW RIVER RESOURCES LTD. AND HIGHHAWK MINES LTD.

Sworn Before Me at the City)
of Vancouver in the Province)
of British Columbia this)
17th day of September,)
1976.)

M.E. Brown)
A NOTARY PUBLIC IN AND FOR THE)
PROVINCE OF BRITISH COLUMBIA.)

Steve Travis
M.S. Travis

MAYNARD E. BROWN
BARRISTER & SOLICITOR
1320-200 GRANVILLE SQUARE
VANCOUVER, B.C.
V6C 2R2

EXHIBIT "A"

GEOLOGICAL REPORT ON THE
PING GROUP OF MINERAL CLAIMS

situate at

64°38' North Latitude
133°16' West Longitude

N.T.S. 106C/11

Salaries

M.S. Travis	1,820.00
N. Humphreys	1,540.00

Transportation

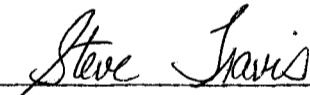
Helicopter	5,064.63
Fixed Wing	9,137.00
Fuel	805.36

Drilling

30,574.40


TOTAL

48,941.39

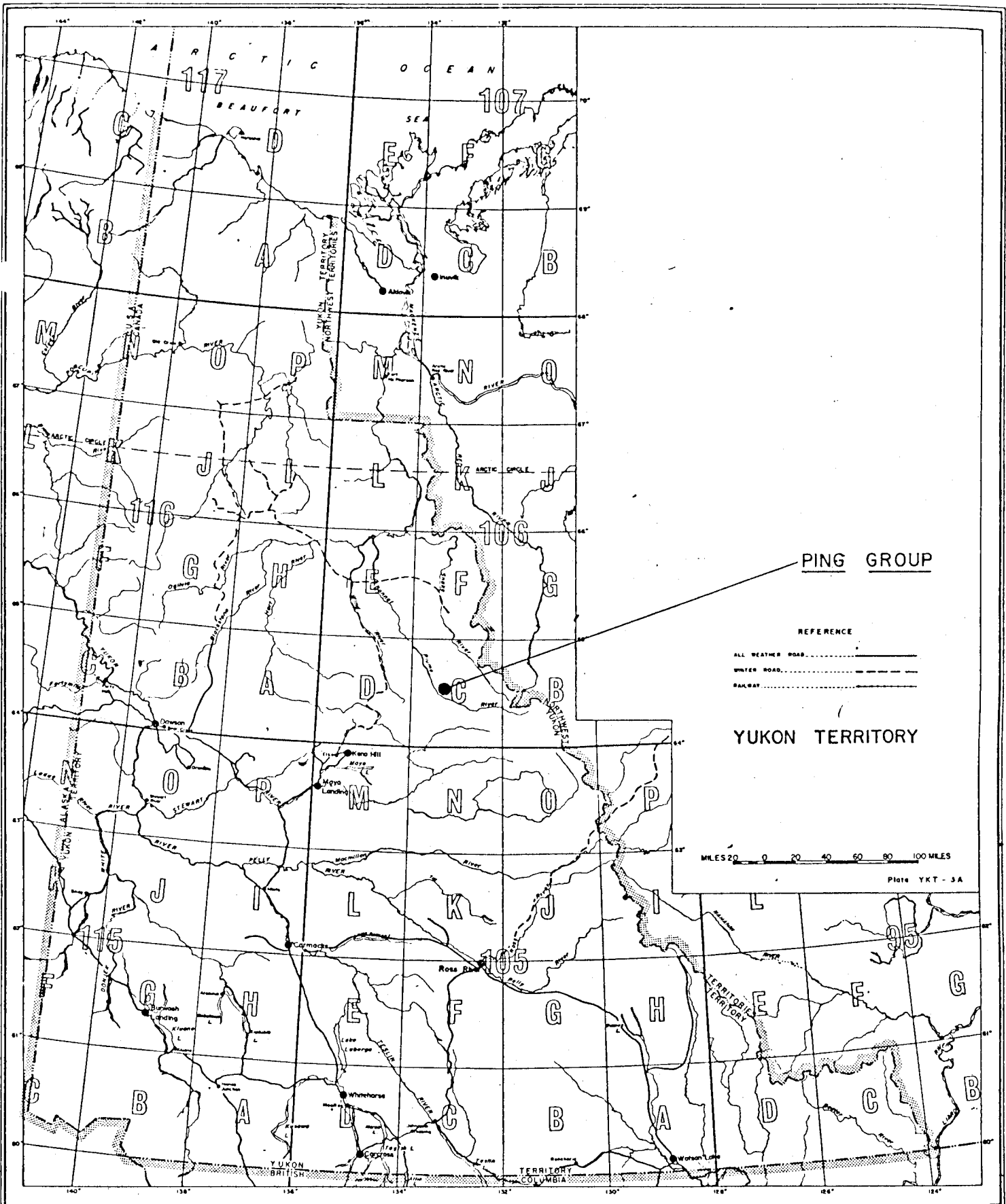


M.S. Travis

THIS IS EXHIBIT "A" TO THE STATUTORY DECLARATION OF EXPENDITURES
RELATING TO THE DIAMOND DRILL SURVEY DECLARED BEFORE ME ON THE
17th DAY OF SEPTEMBER, 1976.



A NOTARY PUBLIC IN AND FOR
THE PROVINCE OF BRITISH
COLUMBIA.



PING GROUP

REFERENCE

- ALL WEATHER ROAD
- WINTER ROAD
- RAILWAY

YUKON TERRITORY

MILES 20 0 20 40 60 80 100 MILES

Plate YKT - 3A



Drawn by: MST	Traced by:		
Revised by:	Date:	Revised by:	Date:

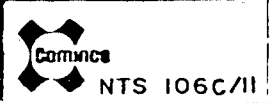
LOCATION MAP

PING GROUP

Scale: 1" = 80 miles

Date:

Plate: 1



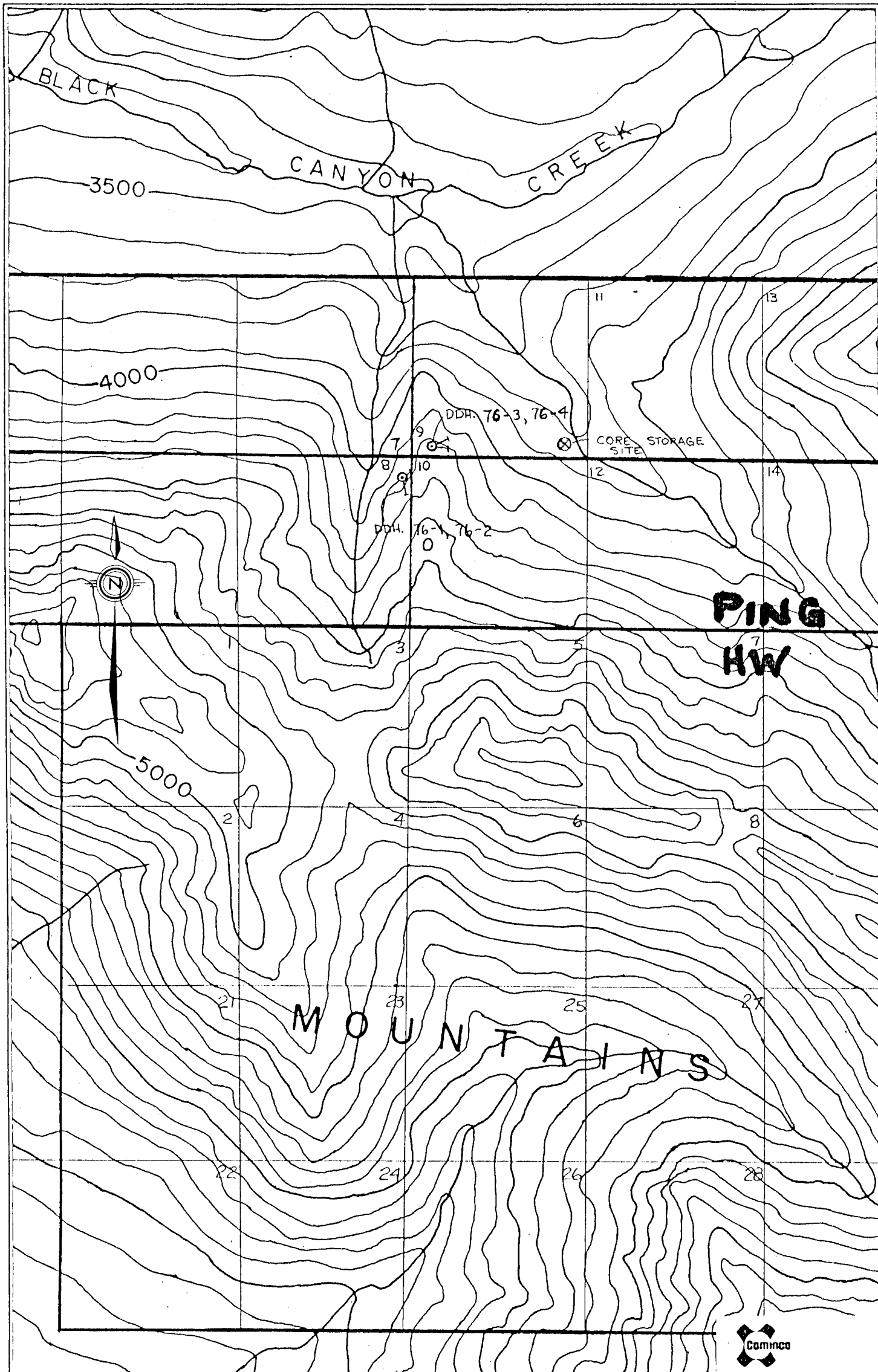
Drawn by: MST		Traced by:	
Revised by	Date	Revised by	Date

LOCATION MAP PING GROUP

Scale: 1" = 8miles

Date:

Plate 2



Drawn by: MST		Traced by:	
Revised by	Date	Revised by	Date

PING GROUP

1976 DIAMOND DRILL HOLE LOCATIONS

Scale: 1" = 1000'

Date: Sept. 2, 1976

Plate

Drill Hole Record



Property PING	District Mayo, Yukon	Hole No. 76-1	
Commenced July 24, 1976	Location Pinguicula Lake	Tests at 200'	Hor. Comp.
Completed July 28, 1976	Core Size BQ	Corr. Dip -67°	Vert. Comp.
Co-ordinates		True Brg. 080°	Logged by N. Humphreys
Objective Extension of No. 1 showing		% Recov. 95%	Date August 2, 1976

Claim PING 8

T Brg. 080°

Collar Dip -67°

Elev. 4255'

Length 429'

Hole No. 76-1 Sheet 1

Footage From To	Description	Sample No.	Length	Analysis	
				%Pb	%Zn
0 - 4	Overburden				
4 - 39	Medium grey, fine-medium crystalline, thickly laminated dolomite. Medium crystalline white dolospar in vugs and in veins cross-cutting the laminations. Minor fault breccia at 28'. Trace disseminated pyrite. Galena and sphalerite in vugs with dolospar and in veinlets at 4', 6.5'-14', 25'-27', 50% recovery - 24'-28'.		9-15'	.20	.38
			24-28'	.50	.92
39 - 75	Similar to above but lighter coloured; white dolospar common; trace Fe oxides in fractures.				
75 - 122	Mottled white and grey medium crystalline dolomite. Coarsely crystalline white and brownish dolospar common. Trace pyrite and Fe oxides in fractures 85'-92'. Vugs common. Manganese(?) staining along fractures.				
122 - 138	Light coloured laminated medium crystalline dolomite. Badly broken up at 126-133'. Distinctive rose coloured (manganese?) staining at 134-135'.				
138 - 151	Mottled white and grey medium crystalline dolomite. Brown and white dolospar in vugs.				
151 - 176	Medium grey, fine to medium crystalline dolomite. Faint white dolospar mottling. More uniform texture than above (138'-151').				
176 - 260	Fine to medium crystalline, fine-coarsely laminated grey and white dolomite. Frequently mottled grey and white. Dark grey "sandy" textured at 198-204', 208-212', 228-243'. Euhedral pyrite in vugs at 225'.				
260 - 262	Fault breccia				
262 - 285	Medium grey, fine crystalline (microcrystalline?) white and brown dolospar common. Strong fracturing and veining at 280-283'. Core badly broken up.				
285 - 345	Medium grey, microcrystalline dolomite. White and brown dolospar in vugs. Minor dolospar in veinlets. Fault breccia at 326'.				

Scale

Colour Plot
& Dips

Drill Hole Record



Property	PING	District	Mayo Yukon	Hole No.	76-1	
Commenced	July 24, 1976	Location	Pinguicula Lake	Tests at	200'	Hor. Comp.
Completed	JULY 28, 1976	Core Size	BQ	Corr. Dip	-67°	Vert. Comp.
Co-ordinates				True Brg.	080°	Logged by N. Humphreys
Objective				% Recov.	95%	Date August 2, 1976

Claim PING 8
T Brg.
Collar Dip
Elev.
Length
Hole No. 76-1
Sheet 2

Footage		Description	Sample No.	Length	Analysis					
From	To									
345	381	Similar to above but more laminations and mottling caused by grey bands of dolomite. Minor carbonaceous material in veins parallel to laminations. Trace disseminated pyrite. Minor vugs.								
381	429	Light-medium grey, microcrystalline to finely crystalline dolomite. "Sandy" sections at 382'-384' and 417'. Argillic and carbonaceous stringers common, especially from 381'-389'. Pyrite abundant--disseminated and in fractures. Coarse white dolospar common. Dark grey argillaceous dolomite from 385-387'.								
429		END OF HOLE.								

Drill Hole Record



Property	PING	District	Mayo, Yukon	Hole No.	76-2
Commenced	July 29, 1976	Location	Pinguicula Lake	Tests at	200', 410' (Dip)
Completed	August 1, 1976	Core Size	BQ	Corr. Dip	-70°
Co-ordinates		True Brg.	136°	Logged by	M.S. Travis
Objective	Extension of No. 1 showing	% Recov.	95%	Date	August 2, 1976

Claim
PING 8T Brg.
136°Collar Dip
-70°Elev.
4255'Length
432'

Hole No. 76-2

Sheet 106/11

Footage From To	Description	Sample No.	Length	Analysis
0 - 11	Casing			
11 - 80	Dolomite: medium to dark grey, thickly laminated with frequent stromatactoid texture. Collapse brecciation 15'-30'. Minor fault gouge at 35'. Medium to coarsely crystalline usually; minor areas of finely crystalline massive dolomite. Minor vugs with oxidized pyrite. Some pink Mn stain.			
80 - 155	Dolomite: mostly light and medium grey banded medium crystalline with sandy textured dolomite to 83'. After 83' is medium grey dolarenite mottled with brownish-grey rounded patches and brown sandy dolomite laminations.			
	122'-124' good dark grey and white banding with many small vugs <3mm. Laminations at 42° to core axis.			
	130'-135' finely crystalline, well laminated, light grey with frequent pink Mn-stained laminae. Fault zone from 149'-154' at 19° to core axis.			
155 - 224	Dolomite: in places mottled as above but largely dark grey with coarse sandy texture. Very carbonaceous. Frequent rotated fragments. Medium crystalline pink and white laminated dolomite from 210'-213'.			
224 - 367	Dolomite: Medium to coarsely crystalline for top 30' grading into microcrystalline texture. Faint lamination visible. Light to medium grey in colour. Frequent small vugs <3mm. Laminations at 339' at 42° to core axis. Occasional euhedral pyrite in vugs.			
367 - 372	Interbedded dolomite and shale: black laminated dolomite and very carbonaceous black shale. Minor white dolospar in crosscutting stringers.			

Drill Hole Record



Property	PING	District	Mayo, Yukon	Hole No.	76-3
Commenced	August 3, 1976	Location	Pinguicula Lake	Tests at	200' Dip
Completed	August 6, 1976	Core Size	BQ	Corr. Dip	-50°
Co-ordinates		True Brg.	055°	Logged by	M.S. Travis
Objective	To test extension of mineralization from No. 2 zone			% Recov.	80%
				Date	August 8, 1976

Claim PING 9
T Brg. 055°
Collar Dip -50°
Elev. 4230'
Length 331'
Hole No. 76-3

Footage From To	Description	Sample No.	Length	Analysis	
				%Pb	%Zn
0 - 13	Casing				
13 - 55	Dolomite: medium grey, fine to medium crystalline, poorly laminated in places. Frequent stylolites. From 37'-40' minor collapse breccia with infilling of argillaceous, carbonaceous material and dolomitic sand. Some white dolospar containing minor pyrite sphalerite and galena at 38.5'.				
55 - 144	Dolomite: dark grey, medium crystalline, mostly well laminated with random spotted sections. Stromatactoid texture occasionally found down to 120'. 144' : 6 inch section of fault gouge. Fault oriented at 5° away from core axis.				
144 - 227	Dolomite: light to medium grey, medium crystalline. Contains rounded patches of brown, dolomite giving rock a mottled appearance. Frequent sections showing 'sandy' textured dolomite. Minor lamination at 172'. From 188-189' white dolospar with pink Mn stain.				
227 - 331	Dolomite: medium to dark grey, well laminated, sandy textured. 228'-230': finely laminated with many small vugs <3mm. along laminae. Pyrite along many small fractures from 236'-246'. Laminae at 30° to core axis. Collapse brecciation and stromatactoid texture from 260' to end of hole. Pyrite stringers and disseminations in white dolospar at 266' Minor fault gouge at 262' Argillaceous and carbonaceous material cementing breccia at 301'-305', 310'-312', 319-320', 321'-323', 326'-330'. Minor white dolospar white sphalerite at 303', sphalerite and galena at 309'-310' and trace amounts of sphalerite and pyrite from 310'-320'.		302.5- 303.5 309- 310	.03 .45	1.08 1.36

Drill Hole Record



Property	PING	District	Mayo, Yukon	Hole No.	76-4
Commenced	August 6, 1976	Location	Pinguicula Lake	Tests at	Hor. Comp.
Completed	August 8, 1976	Core Size	BQ	Corr. Dip	045°
Co-ordinates				True Brg.	090°
Objective	Test No. 2 showing			% Recov.	80%
				Date	August 9, 1976

Claim PING 9

T Brg.

090°

Collar Dip

-45°

Elev.

4230'

Length

287'

Hole No.

Sheet

Footage From To	Description	Sample No.	Length	Analysis	
				%Pb	%Zn
0 - 21	Overburden				
21 - 36	Badly broken up (20% recovery) medium grey, finely crystalline dolomite. Graphite and medium crystalline dolospar in fractures. Pyrite associated with white dolospar. 34'-36': Dark grey dolomite; abundant graphite in fractures.				
36 - 52	Medium to dark grey, microcrystalline to finely crystalline dolomite. Well brecciated generally with some sections (36-37', 45-46') of uniform grey microcrystalline dolomite. Breccia contains abundant graphite both as fragments and in matrix. White and yellow coarsely crystalline dolospar common in breccia. Sphalerite, galena and pyrite occurs as clots in breccia and in veins. Fault zone?		36-46	3.85	9.85
			46-50	.89	.06
52 - 99	Medium grey, medium-finely crystalline dolomite. White coarsely crystalline dolomite occurs as blotches and in veins. 55'-57': breccia with abundant graphite, brown dolospar, trace galena. 81'-86': Fault breccia. Trace galena at 60', 62', 82', 90', 97', generally in veins with dolospar.		55-59	.68	1.58
			59-63	.62	.05
99 - 177	Similar to above but dark grey colour. Abundant veining with white dolospar. Fault breccia 103'-104'. 104'-130": collapse breccia(?) with generally angular fragments abundant dolospars, vugs. Galena at 103' in fault breccia. Faintly laminated from 99'-127'. Laminations more pronounced after 127'. Trace galena, sphalerite, pyrite in vein with white dolospar at 140', 144'. Minor breccia at 135'-136', 142'-143'. Core badly broken up, breccia at 167'-171'.				
177 - 178	Fault breccia.				
178 - 215	Medium-fine crystalline medium-light grey dolomite. Generally well laminated (grey-white). Faint stromatactoid texture at 189'-190'. Medium crystalline, white-yellow dolospar abundant at 178'-18', 206'-208'. Minor graphite in veins.				

Scale

Colour Plot
& Dips

Drill Hole Record



Property **PING** District **Mayo, Yukon** Hole No. **76-4**

Commenced Location Tests at Hor. Comp.

Completed Core Size Corr. Dip Vert. Comp.

Co-ordinates True Brg. Logged by

Objective % Recov. Date

Claim
T Brg.
Collar Dip
Elev.
Length
Hole No. Sheet

Footage		Description	Sample No.	Length	Analysis					
From	To									
215	226	Similar to above but cream coloured with faint black laminations.								
226	257	Medium to dark grey spotted dolomite, pseudo pisolitic (?). 237'-255': core badly broken up.								
257	287	Mottled, grey-cream white dolomite. Faint laminations at 257'-260', 264'. Manganese staining (?) at 260'-262'.								
287		END OF HOLE.								