

DIAMOND DRILL RECORD

LOGGED BY

J. Chow

091247)

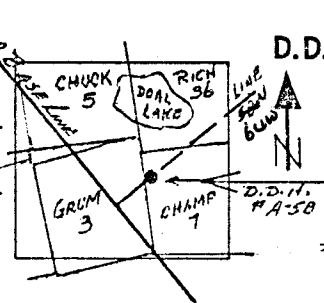
PROPERTY VANGORDA "GRUM" ZONE, AEX - VANGORDA OPTION

D.D.H. No. A-58 PAGE 1 of 1

LATITUDE 6 + 00' N BEARING OF HOLE _____ STARTED Nov. 4/74 D.S.

CLAIM No. CHAMP 7

DEPARTURE LINE ⁶⁴ 68 + 00' W DIP OF HOLE - 90° COMPLETED Nov. 29/74 D.S.



DIRECTION AND DISTANCE FROM LOCATION: APPROX. 400' SE of CHAMP 7 corner pin and 115' E of NE CLAIM POST CHAMP 7 boundary.

ELEVATION 429 T.A. Topog 4202 A.B.L. DIP TESTS _____ DEPTH Proposed 585 or 690' ULTIMATE 615'

HOLE SIZE: 0-201' BW 201-615' 80

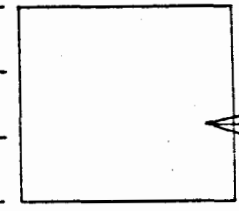
FOOTAGE		DESCRIPTION	FREQUENCY FT.	SAMPLE No.	FOOTAGE		SAMPLE LENGTH	ASSAY			
FROM	TO				FROM	TO					
0	201	OVERBURDEN Gravel, fill, small boulders. Boulders & rocks recovered are all granitic.	0	-	0	95					
201	276.0	QUARTZ - SERICITE PHYLITE. 60% qtz, 30 ser, 10 graph. Dark gray, thinly foliated also jointed (joint). 205-213' well developed F1, 19 F1 also @ 211.5' local F1 noted. Tight shear @ 45° 45' & core @ 205-213'. Rock shows slightly altered looks. From 239-276' occasional Nabs phylite, minor occur. of chlorite. From 250-265': 40-45% qtz veins w/ bars & bands chlorite. C.A. 70° @ 201-216', 60° @ 217-230', 55° @ 231', 40° @ 231.5', 70° @ 233', 75° @ 235-246', 70° @ 248', 55° @ 252', 40° @ 253', 75° @ 255, 65° @ 260', 75° @ 265', 95° @ 269', 75° @ 270'-275'	165/30.5	-	201.0	231.5					
			246/5.0	-		226.5					
			203/25.5	-		252.0					
			17.5/24.0	-		276.0					
276.0	304.0	QUARTZ - SERICITE PHYLITE, Altered - Alternate bands gray/buff sericite. 65-90% qtz, 1-3% pyrrho in buff sericite, minor py; no sulphur in gray altered sericite phyllite. Thinly foliated. F1 moderately developed locally. A few slips. No F2 in core noted. 276.0 - 289.0 ~ buff alt'n, minor gray-buff alt'n, 3% pyrrho. - 298.0 ~ gray alt'n through core surface - 304.0 ~ buff alt'n, 0.5-1% pyrrho, minor py. C.A. slip & F2? fold also @ 276.5, 45° @ 277', 70° @ 279', 50° @ 282', 70° @ 283', 85° @ 286', 70° @ 289'-299', 75-80° @ 302'	3.9/7.0	-	276.0	283.0					
			13.6/15.5	-		298.5					
			4.0/5.5	-		304.0					

DIAMOND DRILL RECORD

LOGGED BY g.b.

D.D.H. No. A-58 PAGE 2

PROPERTY _____
 LATITUDE _____ BEARING OF HOLE _____ STARTED _____
 DEPARTURE _____ DIP OF HOLE _____ COMPLETED _____
 ELEVATION _____ DIP TESTS _____ DEPTH _____



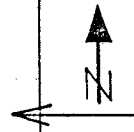
CLAIM No. _____
 DIRECTION AND DISTANCE FROM
 NE. CLAIM POST

FOOTAGE		DESCRIPTION	RECOVERY FT.	SAMPLE No.	FOOTAGE		SAMPLE LENGTH	ASSAY			
FROM	TO				FROM	TO					
304.0	313.7	Qtz-Ser-Biotite-Chlorite Pht; Altered, Buff-brown. 65% qtz, 25 Ser, 10 Bio, minor chlorite, a few flakes phlogopite. Altered rock w/ mod. fractures. Color buff w/ dark brown mixed. Thin foliation. C.A. 90° @ 305', 75° @ 310', 65° @ 315'	27/5.5 12/4.2	-	304.0	309.5 313.7					
313.7	331.0	Qtz-Ser Pht; Gray, Altered. 60-65% qtz. Mod. gray, thin foliation, ± buff ser, buff color carbonate. In tight slip contact w/ buff ser. below, bedded by qtz. C.A. 90° @ 316', 70° @ 317', 90° @ 319', 65° @ 320', 70° @ 324'-331'	0.6/2.3 10.8/15.0	-	313.7	316.0 331.0					
331.0	436.5	Qtz-Ser Pyroxenes; Altered, Alternate bands Buff/gray Sericite Similar to section 2760-3040', including section immediately above. 331.0-360.7' ~ buff alt'n, 0.2% py, a few fresh slips. - 412.8' ~ gray alt'n, no sulphs, " " " " - 416.5' ~ " " " " " " " " - 430.5' ~ buff alt'n, moderately disturbed, locally 1% py. - 432.9' ~ gray alt'n, partly brecciated (lower end). - 436.5' ~ buff alt'n, 80% brecciated, 90% re-cemented, 0.3% py C.A. 60° @ 330.9', slip cont @ 331.0 @ 60°, 70° @ 331.1 (opposite dip to upper side of slip), 85-90° @ 337-344', 70° @ 345', 60-65° @ 348', 75° @ 351', 75° @ 352', 60° @ 353', 55° @ 360', 65-70° @ 361- 385', 85° @ 387', 50° @ 394', 35° @ 402' (35° shear @ 105°) 70° @ 406', 65° @ 409', (Fault zone: 25° @ 412, 0° @ 414, 20° @ 415'), 35° @ 417', 60° @ 420'-424', 70° @ 427-431	12.6/29.5 0.9/19.5 3.2/5.0 1.9/17.5 0.1/5.5 1.0/5.5 4.7/7.0 3.3/4.0 10.9/20.0	-	331.0	360.5 370.0 375.0 394.5 400.0 405.5 412.5 416.5 436.5					

DIAMOND DRILL RECORD

LOGGED BY g/h

PROPERTY _____
 LATITUDE _____ BEARING OF HOLE _____ STARTED _____
 DEPARTURE _____ DIP OF HOLE _____ COMPLETED _____
 ELEVATION _____ DIP TESTS _____ DEPTH _____

D.D.H. No. A-58 PAGE 5
 CLAIM No. _____

 DIRECTION AND DISTANCE FROM
 NE. CLAIM POST

FOOTAGE		DESCRIPTION	RECOVERY FT.	SAMPLE No.	FOOTAGE		SAMPLE LENGTH	ASSAY						
FROM	TO				FROM	TO								
597.0	607.0	BTZ - Ser PHY. Bleached. As 538-585'. 2% py, speck of Pb-Zn Recovery post. C.A. 75°	1.0/5.0 0.5/5.0	-	597.0	602.0								
607.0	610.0	BTZ - Ser PHY. Altered. Gray As 585-597'. Negl. py. C.A. 70°	1.2/3.0	-	607.0	610.0								
610.0	614.0	BTZ - Ser PHY. Bleached. Minor Sulphides As 597-617'. Intensely shaly & brecciated. Abundant AZ veins. Negl. py except first foot (5%). Nobs scattered specks Pb & Zn noted. Core soft & crumbly. C.A. 75-80° @ 611-612'	2.7/4.0	-	610.0	614.0								
614.0	615.0	BTZ - Ser - Bronze PHY, Bleached & Altered Buff ser & red brown mica, dot chlorite. Core highly shaly & crumbly, some gouge & breccia. Minor py noted. C.A. 70°	0.8/1.0	-	614.0	615.0								
	615.0	END OF HOLE												

REMARKS: D.D.H. took long time to complete due to shortage of drillers. partly to stuck rods & later to casing problems. After casing problems encountered, hole left open too long before drilling resumed, consequently core rec