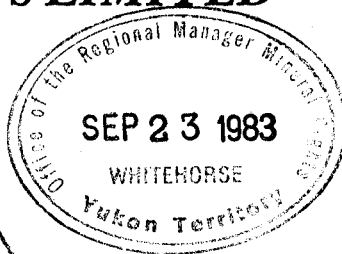


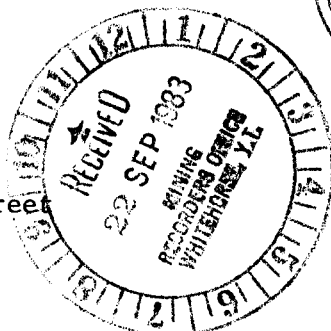
# PAMICON DEVELOPMENTS LIMITED

208 - 850 West Hastings Street  
Vancouver, B.C. V6C 1E1  
Telephone: (604) 684-5901  
684-5902

July 19, 1983



Mr. H.S. Aikins  
Logan Mines Ltd.  
305 - 535 Thurlow Street  
Vancouver, B.C.  
V6E 3L2



Mr. R. Forshaw  
Golden Slipper Resources Ltd.  
3rd. Floor, 750 W. Hastings St.  
Vancouver, B.C.

Dear Sir:

A trenching program was completed on the Jubilee Mtn. property ( Whitehorse M.D.,Y.T.) during the period June 24, 1983 to July 3, 1983. The program was carried out by D. Yeager - Geologist, of Pamicon Developments Ltd. ably assisted by A. Kendrick and J. Robinson of Ace Diamond Drilling. Five trenches were excavated and bedrock drilled and blasted to obtain fresh samples. Brief descriptions of the trenches follow:

## Trench 3W

Location: 1 + 00 S 3 + 50 W  
Length : 10 metres

Remarks : only reached bedrock at one spot on a bedrock high. A grab sample from this spot assayed .03 oz/T Ag, .022 oz/T Au and consisted of andesite with disseminated pyrrhotite and chalcopyrite. A sample of a float piece of drusy, limonitic quartz in the vicinity of the trench assayed .92 oz/T Ag, .003 oz/T Au.

## Trench 7.1 E

Location: 0 + 40 S 3 + 00 E  
Length : 12 metres

Remarks : did not reach bedrock at a depth of 2 metres.

## Trench 12 E

see figure 2

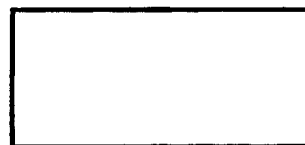
## Trench 13 E

see figure 3

## Trench 14 E

see figure 4

**DATE DUE**



021162

It is apparent from the assay values obtained that the relatively narrow arsenopyrite veins carried high enough gold values to upgrade the 2-3 metre wide samples.

In addition to trenching, geochemical anomalies and EM conductors as indicated in the report by V. Cukor, P. Eng. of NVC Engineering ( Nov. 1982 ) were prospected. Also, the 1981 and 1982 trenches were looked at and the 1982 drill core was inspected to try and evaluate the property potential.

All work to date has been done on the main structure which by trenching, drilling, geophysics and mapping has been indicated to have a strike length of 1700 metres which is open at both ends. The structure is a strong vertical shear zone ranging up to 3 metres wide containing massive arsenopyrite, pyrrhotite, chalcopyrite veins ranging from 7 centimetres to 2 metres wide. The main shear is enveloped by weaker shearing ranging up to 15 metres away on both sides containing disseminated pyrrhotite, chalcopyrite and arsenopyrite. The sulphide minerals, in particular the arsenopyrite and chalcopyrite, appear to contain the gold and silver values. Samples of massive sulphides have contained up to .444 oz/T gold. Drill results to date however, are disappointing in that the structure where intersected has not contained enough sulphides to carry sufficient gold values and widths to indicate a potential mining situation at present prices.

It would appear that the exploration potential for the property lies in discovering a zone or zones of dilation on the structure which could host a large enough body of massive sulphides accompanied by a correspondingly enriched disseminated zone to warrant further development. The probability of the structure containing such a zone or zones is considered high, given the length and strength of the structure and the continuity of gold bearing sulphides contained within it.

The best tool for discovering such deposits would be Induced Polarization, especially in view of the fact the present drill hole data would be available to give grade figures with which the I.P. data could be compared. The most cost effective way to carry out such a survey would be to run one reconnaissance I.P. line along the trace of the structure for its entire length. Any highly anomalous conductors discovered on this line could be compared to the response obtained in the known drilled areas, and if warranted, further delineated by running crosslines over the anomaly. This method would give the exact location, size, and orientation of any large sulphide bodies present and greatly reduce the amount of diamond drilling necessary to explore for them. The cost of the above described survey would be as follows:

\$6,000	geophysical contract
<u>10,000</u>	support, transportation, helper, management, report
\$16,000	Total

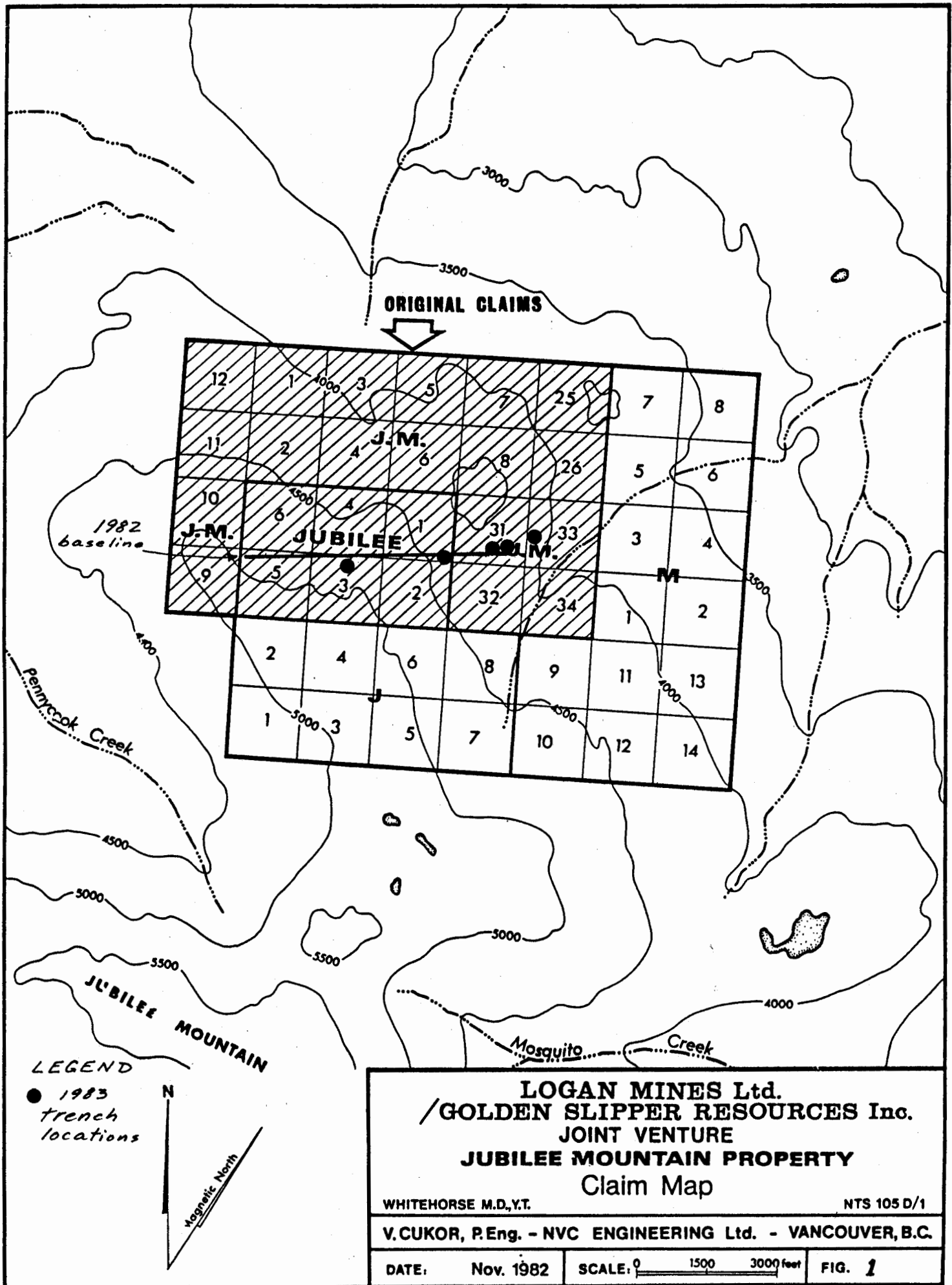
Ace Diamond Drilling have now demobilized the drill and camp equipment from the property. A complete statement of costs will be prepared as soon as all invoices are in and the work will be filed for assessment credit as per your instructions.

Yours Sincerely,

PAMICON DEVELOPMENTS LIMITED

David A. Yeager, Geologist

*David A. Yeager*



**ORIGINAL CLAIMS**

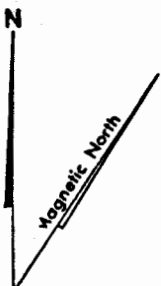
1982  
baseline

Penycrook  
Creek

JUBILEE MOUNTAIN

Mosquito  
Creek

**LEGEND**  
● 1983  
trench  
locations



**LOGAN MINES Ltd.**  
/ **GOLDEN SLIPPER RESOURCES Inc.**  
**JOINT VENTURE**  
**JUBILEE MOUNTAIN PROPERTY**  
**Claim Map**

WHITEHORSE M.D., Y.T.

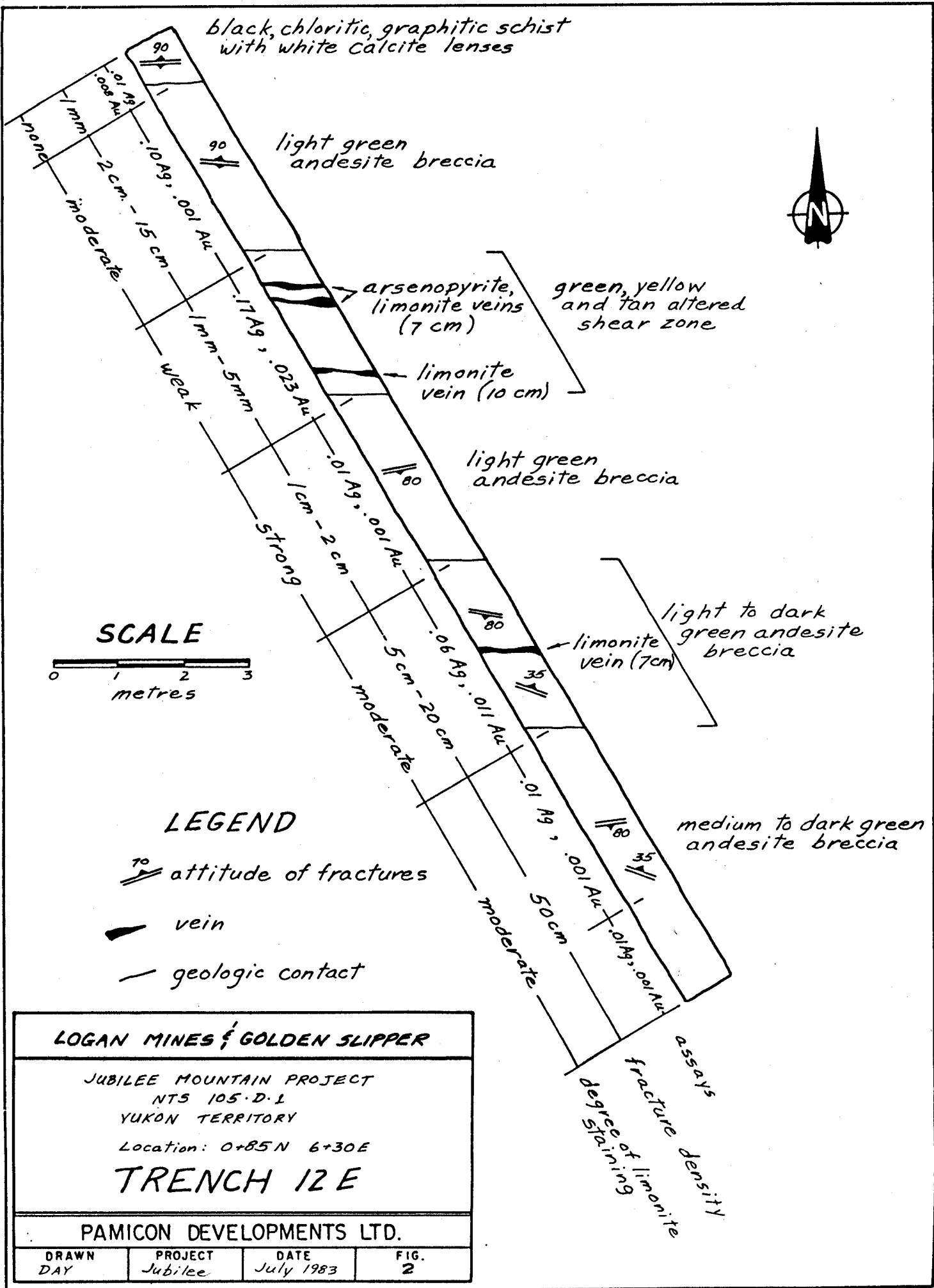
NTS 105 D/1

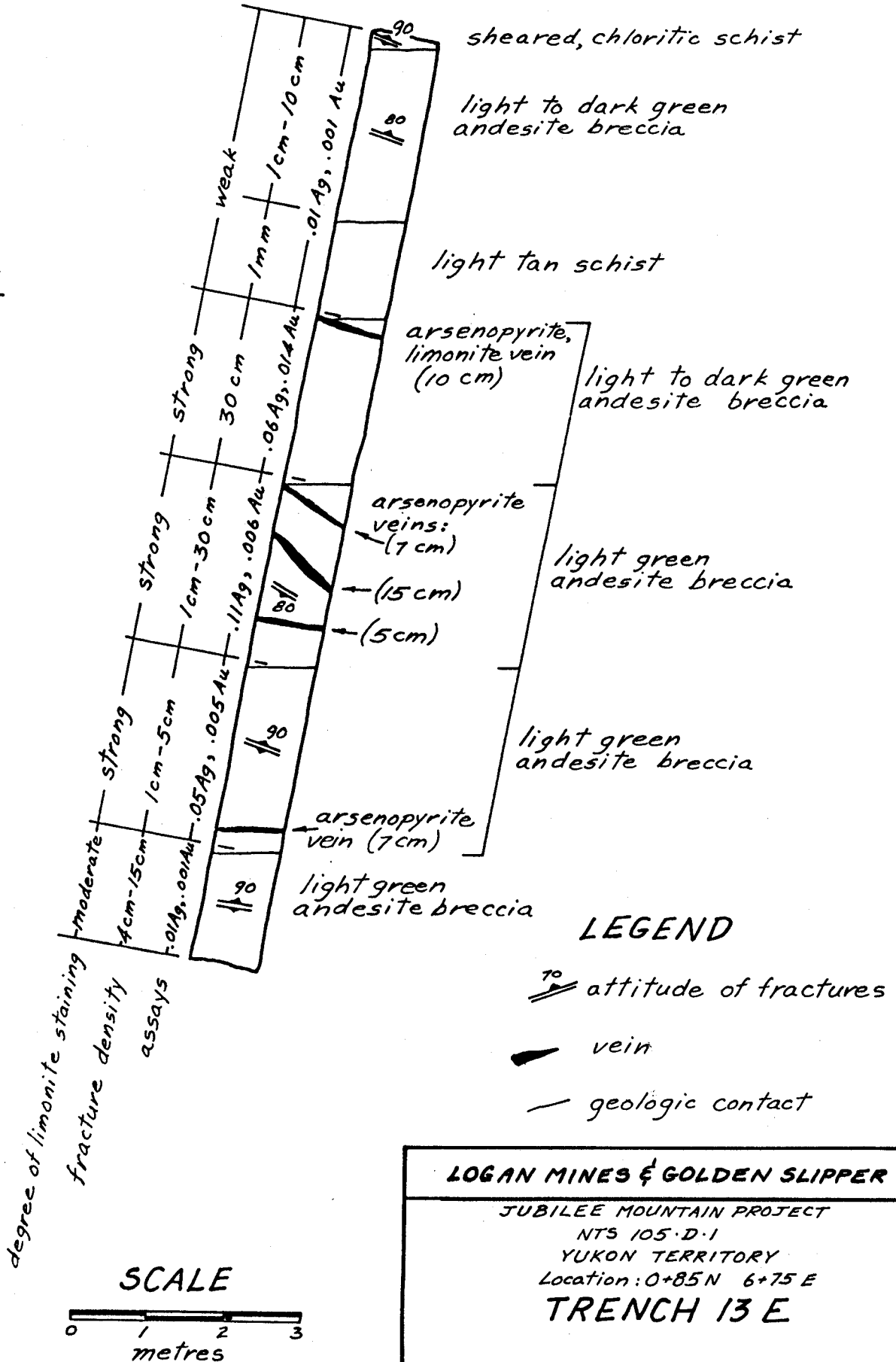
V. CUKOR, P. Eng. - NVC ENGINEERING Ltd. - VANCOUVER, B.C.

DATE: Nov. 1982

SCALE: 0 1500 3000 feet

FIG. 1





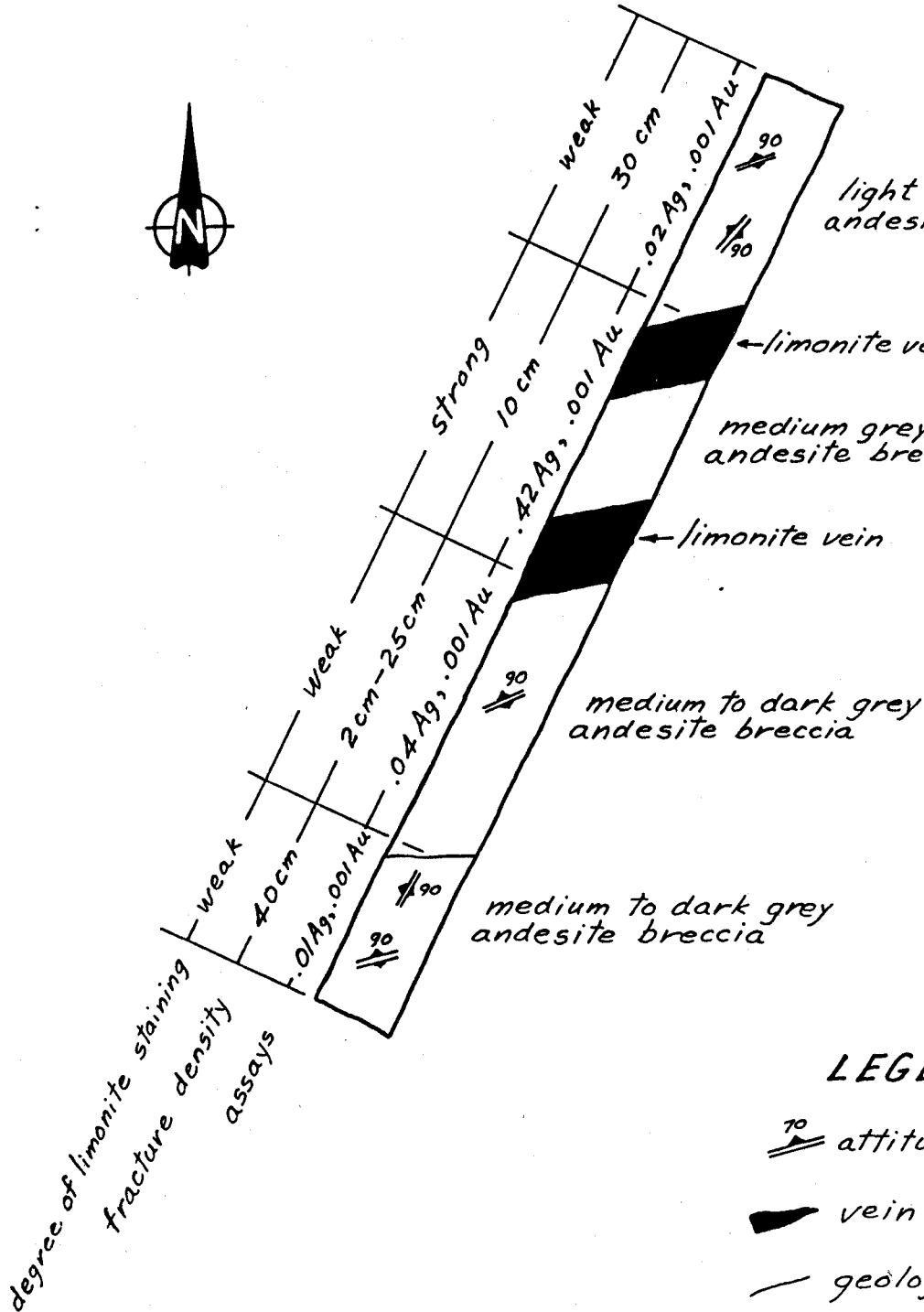
**LOGAN MINES & GOLDEN SLIPPER**

JUBILEE MOUNTAIN PROJECT  
 NTS 105-D-1  
 YUKON TERRITORY  
 Location: 0+85 N 6+75 E  
**TRENCH 13 E**

---

**PAMICON DEVELOPMENTS LTD.**

DRAWN DAY	PROJECT Jubilee	DATE July, 1983	FIG. 3
--------------	--------------------	--------------------	-----------



**LEGEND**

attitude of fractures

vein

geologic contact

**SCALE**



**LOGAN MINES & GOLDEN SLIPPER**

JUBILEE MOUNTAIN PROJECT

NTS 105-D-1

YUKON TERRITORY

Location: 1+25 N 8+82 E

**TRENCH 14E**

PAMICON DEVELOPMENTS LTD.

DRAWN  
DAY

PROJECT  
Jubilee

DATE  
July, 1983

FIG.  
4



To: Pamicon Developments Ltd.,  
 208 - 850 W. Hastings St.,  
 Vancouver, B.C.  
 V6C 1E1  
 Attn.: Mr. David Yeager

ACME ANALYTICAL LABORATORIES LTD.

Assaying & Trace Analysis

852 E. Hastings St., Vancouver, B. C. V6A 1R6

Telephone: 253 - 3158

83-1040

File No. \_\_\_\_\_

Type of Samples Rock

Disposition \_\_\_\_\_

**ASSAY CERTIFICATE**

No.	Sample	Ag oz/ton	Au oz/ton					No.
1	TR12E- 1	.01	.008					1
2	2	.10	.001					2
3	3	.17	.023					3
4	4	.01	.001					4
5	5	.06	.011					5
6	6	.01	.001					6
7	TR12E- 7	.01	.001					7
8	TR13E- 1	.01	.001					8
9	2	.06	.014					9
10	3	.11	.006					10
11	4	.05	.005					11
12	TR13E- 5	.01	.001					12
13	TR14E- 1	.02	.001					13
14	2	.42	.001					14
15	3	.04	.001					15
16	TR14E- 4	.01	.001					16
17								17
18	TR3W - 1	.03	.022					18
19	TR3W - 2	.92	.003					19
20								20

All reports are the confidential property of clients.

DATE SAMPLES RECEIVED July 4, 1983

DATE REPORTS MAILED July 7, 1983

ASSAYER *D. Toy*

DEAN TOYE, B.Sc.  
 CHIEF CHEMIST  
 CERTIFIED B.C. ASSAYER

LIST OF PERSONNEL

JUBILEE MOUNTAIN PROPERTY

J. D. Robinson #210-850 West Hastings St. Vancouver, B.C.	Trencher	June 21 - July 3, 1983 August 5, 6, 7, 8, 1983
D. Schellenburg #210-850 W. Hastings St. Vancouver, B.C.	Labourer	August 6, 7, 8, 1983
A. Kendrick #210-850 W. Hastings St. Vancouver, B.C.	Trencher	June 21 - July 3, 1983
David Yeager #210-850 W. Hastings St. Vancouver, B.C.	Geologist	June 20 - 30, 1983 July 1, 2, 3, 11, 12, 14, 18 August 11, 1983
David Caulfield #210-850 W. Hastings St. Vancouver, B.C.	Geologist	June 9, 10, 1983
Robert Darney #210-850 W. Hastings St. Vancouver, B.C.	Geologist	June 9, 1983
Carol Spooner #210-850 W. Hastings St. Vancouver, B.C.	Bookkeeper	July 18, 1983



CANADA ) In the matter of a trenching, sampling, geologic  
 ) evaluation, and diamond drill demobilization  
 ) program on the JUBILEE 1-6; JM 1-10; JM 11, 12;  
 ) JM 25, 26; JM 31-34; J 1-8; M 1-14 mineral claims

TO WIT ) On behalf of LOGAN MINES LTD., GOLDEN SLIPPER RESOURCES  
 ) TNC.

I, C. K. Ikona for Pamicon Developments Ltd., of 208,  
 850 West Hastings Street, Vancouver, B.C. do solemnly declare that the  
above detailed evaluation program was carried out  
on the above mineral claim group during the period  
June 9, 1983 to Aug. 11, 1983.

The following expenses were incurred during the course of this work and in the compilation and reporting of the results:

Equipment Rentals	\$	<u>          </u>
Expendible Field Supplies		<u>473.93</u>
Office Supplies, Maps, Photos		<u>          </u>
Drafting and Reproduction		<u>          </u>
Equipment and Machinery		<u>          </u>
Supplies		<u>          </u>
Food		<u>409.00</u>
Expediting		<u>          </u>
Freight		<u>36.25</u>
Travel and Accommodation		<u>3752.36</u>
Prepaid Expenses		<u>          </u>
Sundry		<u>53.39</u>
Camp and Miscellaneous Fuels		<u>          </u>
Camp Fixed Wing Support		<u>          </u>
Overhead		<u>          </u>
Wages		<u>7450.00</u>
Helicopter Support		<u>3012.80</u>
Assaying and Geochemistry		<u>225.00</u>
Trenching		<u>          </u>
Contracting Fees		<u>2424.41</u>
Report Preparation		<u>750.00</u>
Not Assigned		<u>          </u>
TOTAL	\$	<u>18,587.14</u>

And I make this solemn declaration conscientiously believing it to be true and knowing that it is of the same force and effect as if made under oath and by virtue of the Canada Evidence Act.

Declared before me at Vancouver in )  
 the Province of British Columbia this )  
8<sup>th</sup> day of September, 1983 )

H.S. Akin



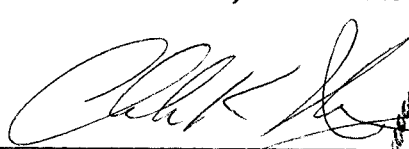
A Commissioner for Oaths for,  
 or Notary Public for the Yukon Territory

ENGINEERS CERTIFICATE

I, CHARLES K. IKONA of 5 Cowley Court, Port Moody  
in the Province of British Columbia DO HEREBY CERTIFY that:

1. I am a Consulting Mining Engineer with offices at  
#208 - 850 W. Hastings St. Vancouver, B.C.
2. I am a graduate of the University of British Columbia  
with a degree in Mining Engineering.
3. I am a member in good standing of the Association of  
Professional Engineers of the Province of British Columbia.
4. The work reported on herein was conducted during a program  
under my supervision and under the supervision of David A.  
Yeager, a geologist with whom I have worked for a period  
of nine years and in whom I have every confidence.

Dated at Vancouver, B.C. this 8<sup>th</sup> day of Sept 1983

  
\_\_\_\_\_  
Charles K. Ikona, P. Eng.

