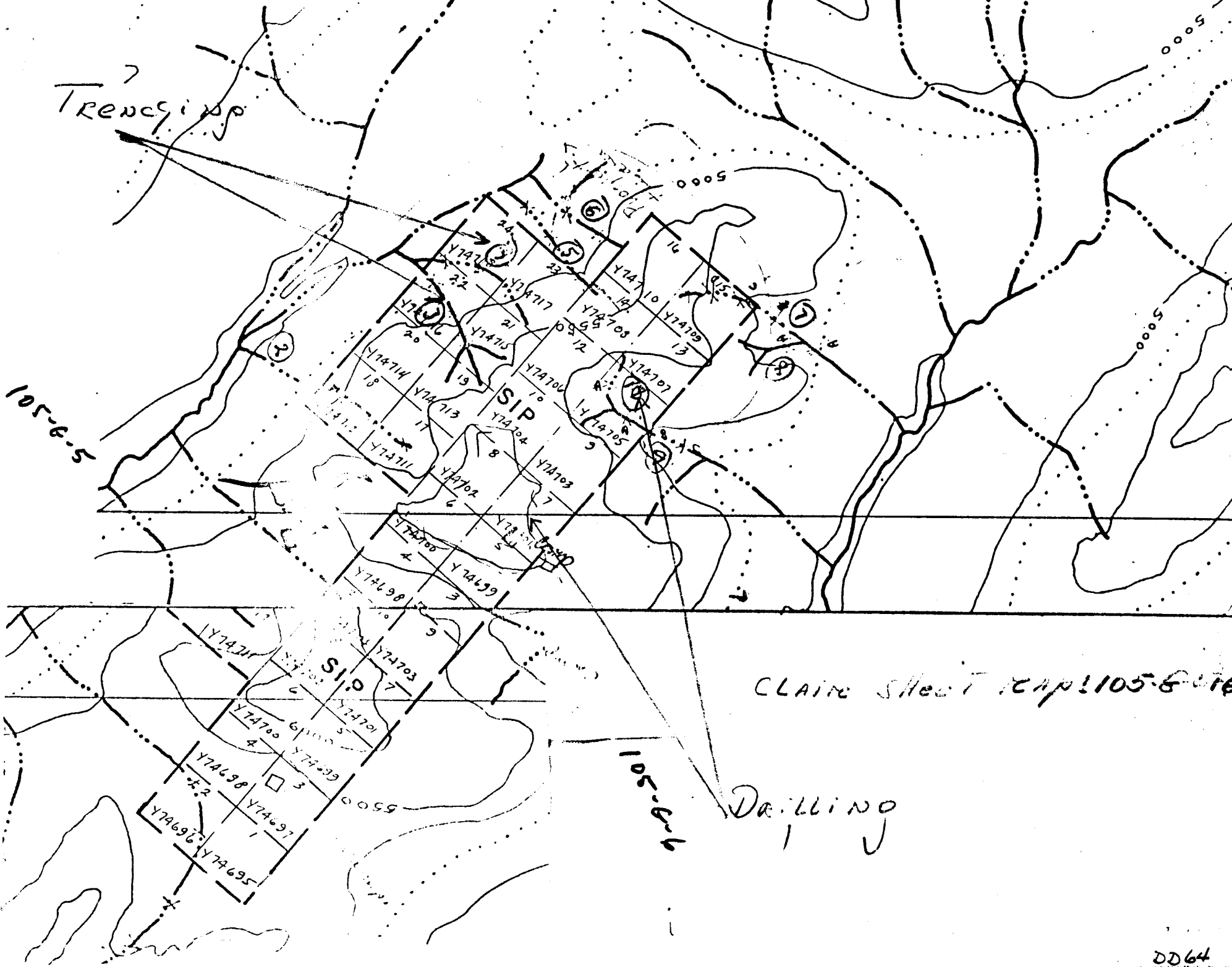


105-G-501

Trenching

105-6-5




CLAIM SHEET MAP 105-6-5

DRILLING

DRILL HOLE LOG

Property SIP # 11 Latitude 131° / 30' Hole No. 1  
 Location 40 miles south of Ross River Completion August 15, 1974 Depth 85'  
 Date Drilled \_\_\_\_\_ Elevation 4,500' Logged by Ferdinand Schomig

Footage		Description	Analysis			
From	To		Pb. P.P.M.	Zn. P.P.M.	Cu. P.P.M.	
0	85'	Core placed on site for examination by geologist. No assay taken to date.				

  
 FRANK ERL  
 Agent for Hesca Resources Corporation Ltd.

HESCA

RESOURCES CORP. LTD.

09/155

105-6-5 ~~111~~ JD64


1974

SIP 7+11

## DRILL HOLE LOG

Property SIP # 7 Latitude 131° / 30 Hole No. 2  
 Location \_\_\_\_\_ Completion August 15, 1974 Depth 115'  
 Date Drilled \_\_\_\_\_ Elevation 4,500' Logged by Ferdinand Schomig

Footage		Description	Analysis			
From	To		Pb. P.P.M.	Zn. P.P.M.	Cu. P.P.M.	
0	115'	Core placed on site for examination by geologist. No assay taken to date.				

  
 FRANK ERL  
 Agent for Hesca Resources  
 Corporation Ltd.

HESCA RESOURCES CORPORATION LTD.

SIP CLAIMS - 1 to 24

Breakdown of Exploration Costs Involving Drilling, & Trenching.

One (1) Driller for 14 days @ \$50.00 per day	\$ 700.00
One (1) Helper for 14 days @ \$30.00 per day	420.00
<u>Trenching</u>	
Two (2) men - 14 days @ \$30.00 per day	840.00
<u>Helicopter - Support</u>	
From Ross River to property	1,135.58
Camp Supplies and Expenses	1,335.00
	<hr/>
TOTAL	24,430.58
	<hr/> <hr/>