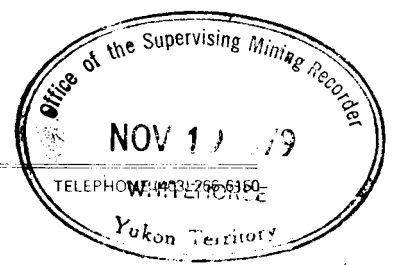


ALLEN RESOURCE CONSULTANTS LTD.

GUY ALLEN, P. ENG. (B.C.), P. GEOL. (ALTA.)
CONSULTING GEOLOGIST

BOX 7248, POSTAL STATION "E" CALGARY, ALBERTA T3C3M2



REPORT OF
INVESTIGATIONS
ON THE



COM # 45 - 53 CLAIMS (YA 35736 - 35744)

CABIN CREEK AREA

WATSON LAKE MINING DIVISION

YUKON TERRITORY

Guy Allen, P. Eng.
October, 1979

6 (v) (a) GEOLOGICAL REPORT

(b) Com # 45-53 incl.

CLAIM SHEET: 105-B/10

LAT. 60°52'N LONG. 130°35'W.

(c) GUY ALLEN, P. ENG. - author, supervisor

(d) July 4, 1979.

090653

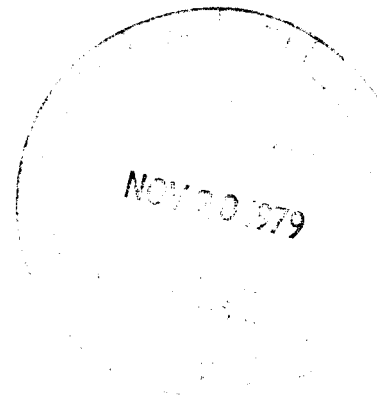


TABLE OF CONTENTS

	<u>Page</u>
Introduction	3
General Description of the Claims Area	3
Geology	3
Description of Mineralized Occurrence	3
Conclusions	4
Statement of Costs	4

LIST OF ILLUSTRATIONS

Plate No. 1 - Location Map	1
Plate No. 2 - Claims Locations and Prospecting	2

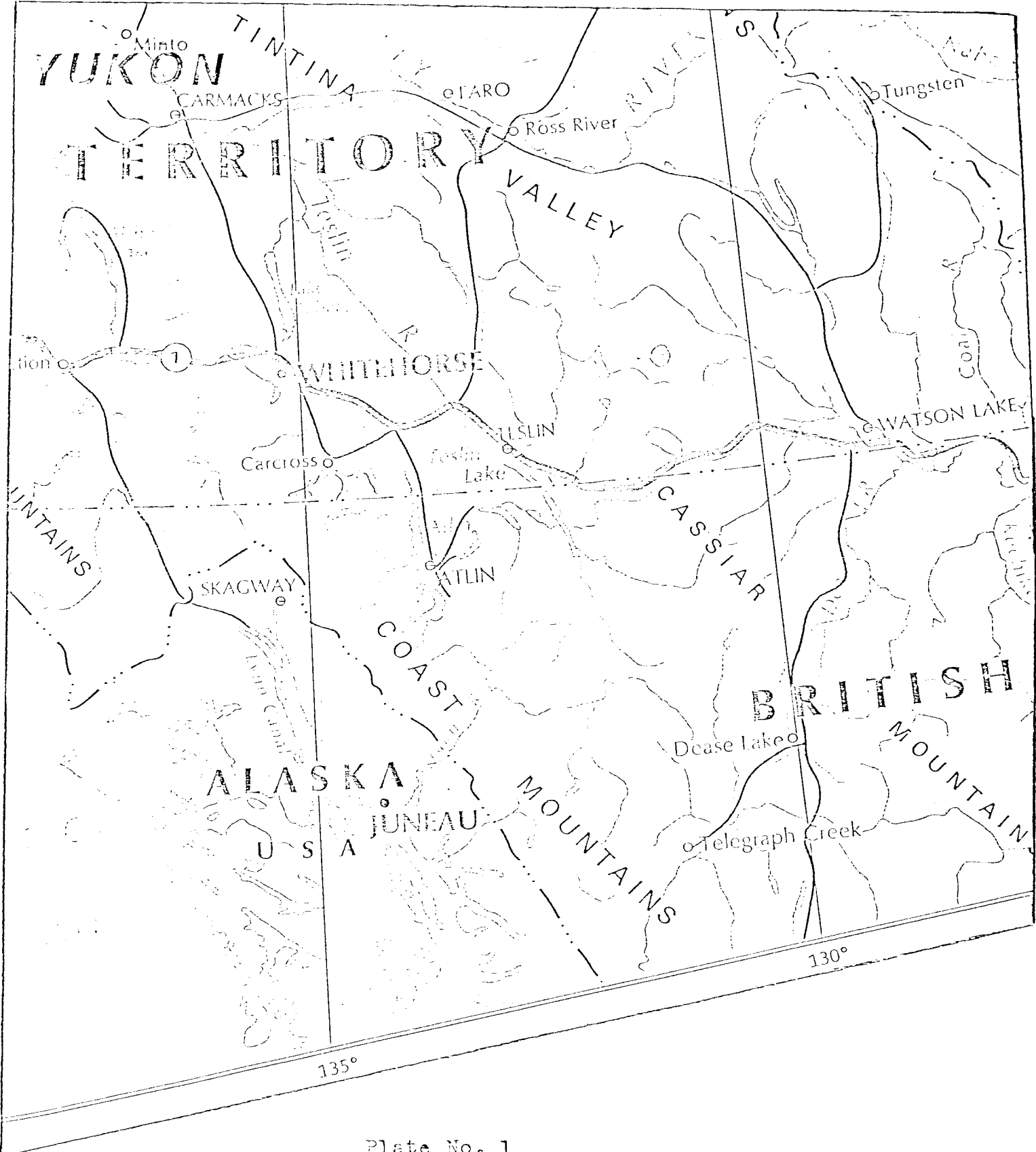


Plate No. 1

COM NOS. 45 - 53

LOCATION MAP

Scale: 1 cm. = 25 mi.

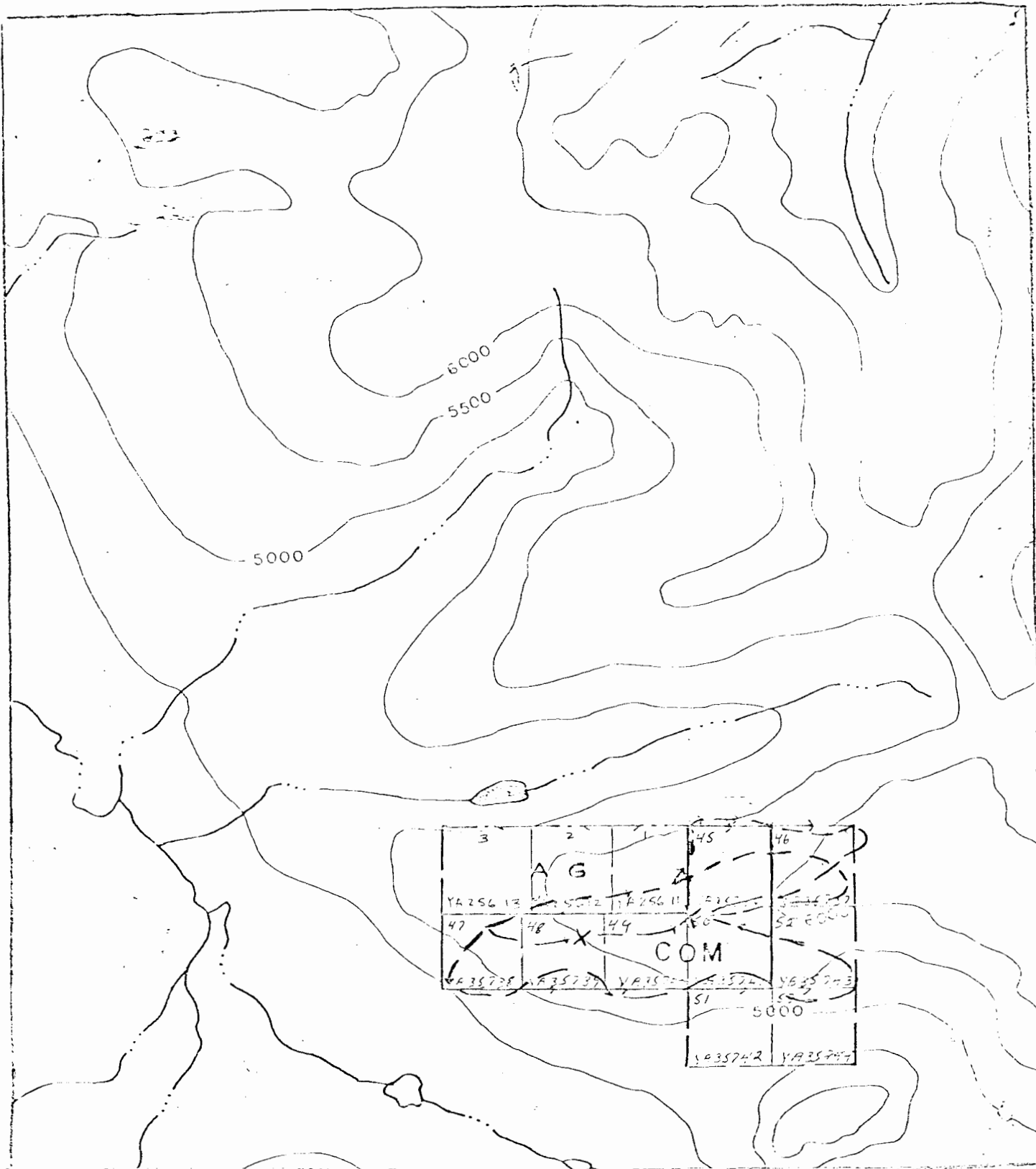


Plate No. 2

105B/10

COM # 45 - 53 CLAIMS

CLAIMS LOCATION & PROSPECTING

Scale; 2 in. = 1 mi.

X Trench Location

→ Prospecting Traverse

Introduction

The writer, accompanied by Kenneth Lintott, P. Geol., Wayne Fisher, prospector, and David Allen, field assistant, spent one day (July 4, 1979) prospecting the Com #45 - 53 mineral claims (YA35736 - 35744), and examining mineral occurrences and trenched areas. Geochemical results, as obtained by Hudson Bay Exploration and Development Ltd., as available in assessment files were used as a guide to locate favorable areas for examination. Operations on this property were part of a program of examination of a number of prospects by the combined efforts of Complex Resources International Ltd. and Dayton Creek Silver Mines Ltd. The day's work was hampered by cold and wet conditions. Transportation to and from the property was by helicopter.

General Description of the Claims Area

This prospect area presently consists of nine mineral claims, Com Nos. 45 - 53 inclusive (YA 35736 - 35744) located in NTS 105B/10, immediately north of the headwaters of Cabin Creek, in the Watson Lake Mining Division, some seventy-five miles west-northwest of Watson Lake. The claims are registered in the name of Complex Resources International Ltd.

The property straddles an east-west ridge, which is bounded by two tributaries of the upper reaches of Cabin Creek. Most of the claims area is above treeline, with the slope covered by grasses and small bushes. Outcrop is exposed over approximately 15% of the area.

Access to the property is by helicopter. Travel by horseback would be possible in the area.

Geology

The claims area is underlain by Mesozoic intrusives, part of the massive Cassiar batholith, and generally of a granodiorite composition.

During the prospecting traverses the majority of the rocks observed were granodioritic, both as float and in place. On Com #48 in the vicinity of the small pits metasedimentary lithologies in the form of siliceous schists were noted, but determined to be of limited extent.

Description of Mineralized Occurrences

Mineralization was noted at two localities within the interest area.

Near the northeast corner of Com #50 is a large depression which is indicated to be the result of trenching operations in the past. At the time of examination this depression was full of snow and ice, and consequently the geological relationships could not be observed

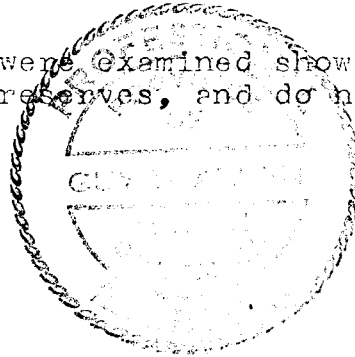
in place. However, Around the borders of the depression were scattered pieces of galena-bearing rock. The host rock is granitic.

Approximately 600 feet south and 1,700 feet west of this large depression is a pit five feet by five feet by two and a half feet deep. No outcrop was observed, by black, weathered, sooty material was seen, which showed evidence of pyrite, galena, and sphalerite. From this pit, 85 feet at 300°, was observed another pit with a small amount of sulphide-bearing material. The rock in place at this spot is well-weathered, black and crumbly. No strike and dip could be determined. Another small pit was located 60 feet at 140° from the first pit. This showed a band of metasediment striking at 140°. The rock was a green-grey, speckled siliceous schist with biotite and good schistosity. No mineralization was observed.

Geochemically interesting areas as defined from Hudson Bay's past efforts were examined, but no mineralization was found.

Conclusions

Mineralized areas that were examined showed little promise of developing any meaningful reserves, and do not appear to warrant any further work.



Guy Allen
Guy Allen, P. Eng.
October 16, 1979

Expiry Date April 22, 1980

Statement of Costs

Since this project was part of a larger program carried out in this general area, a number of expenses have been prorated.

1. Services:		
G. Allen, P. Eng. 1 day @ \$250.00		\$250.00
K. Lintott, P. Geol. 1 day @ \$250.00		\$250.00
W. Fisher 1 day @ \$75.00		\$75.00
D. Allen 1 day @ \$35.00		\$35.00
2. Helicopter		\$584.00
3. Motel		\$60.00
4. Meals		\$60.00
5. Report Preparation:		
G. Allen, P. Eng. ½ day @ \$250.00		\$125.00
6. Transportation		
Calgary - Watson Lk & return ¼ of \$1,080.00		\$270.00
U-Drive: 2/15 of \$435.81		\$58.11
	Total	\$1,767.11

Guy Allen
Guy Allen, P. Eng.
Oct. 16, 1979