



Report of Investigations  
on the  
Zac Prospect  
COM Nos. 1-12 Claims (YA 35692-YA 35703)

Irvine Lake Area  
Watson Lake Mining Division  
Yukon Territory

K. G. Lintott, P. Geol.  
November, 1979

090605

TABLE OF CONTENTS

	<u>PAGE</u>
Introduction . . . . .	3
General Description of Claims Area . . . . .	3
Geology . . . . .	4
Description of Mineralized Occurrences . . . . .	4
Conclusions . . . . .	5
Statement of Costs . . . . .	6

LIST OF ILLUSTRATIONS

Plate No. 1 - Location Map . . . . .	1
Plate No. 2 - Claims Location and Prospecting . . . . .	2

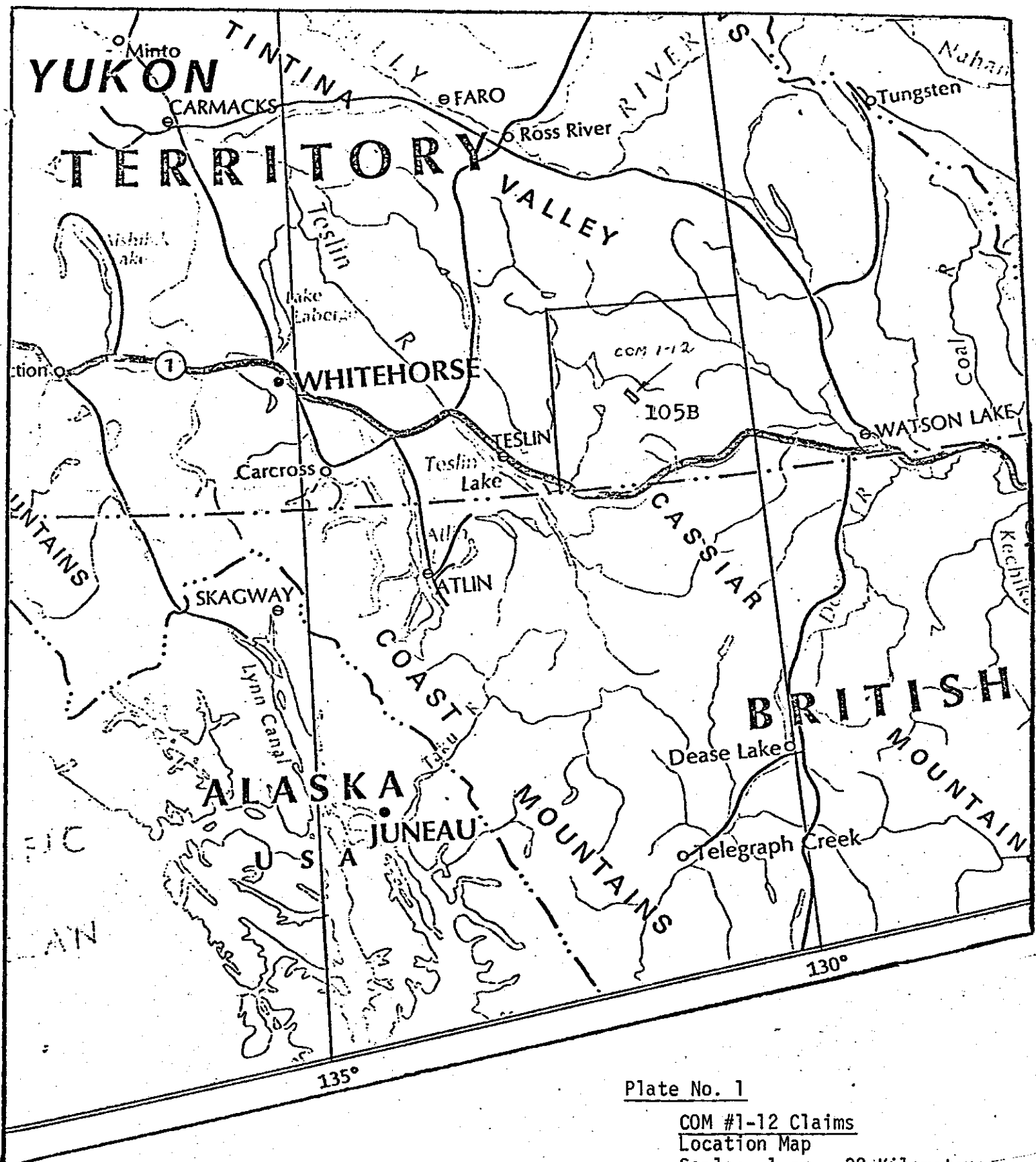


Plate No. 1

COM #1-12 Claims

Location Map

Scale: 1 cm = 32 Kilometers

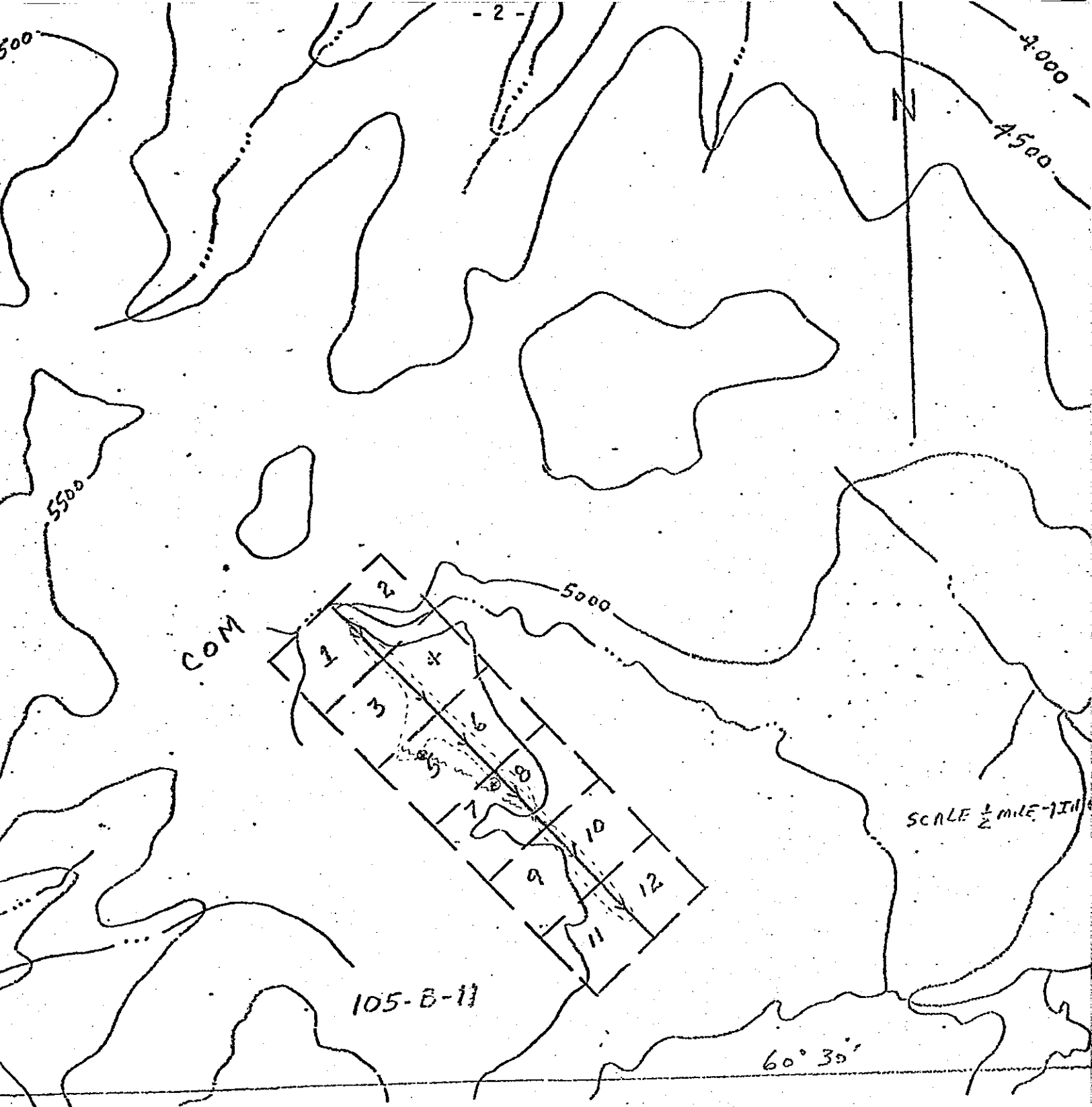


Plate No. 2

COM #1-12 Claims  
 Claims Location and Mineralized Occurrences  
 Scale: 1 inch = 1/2 mile

● Copper Occurrence

~ Shear Zone

--- TRAVERSES

## INTRODUCTION

The writer, accompanied by W. Fisher, prospector, spent ½ day (July 8, 1979) prospecting and examining mineral occurrences on the COM 5 and 7 mineral claims. Geochemical results, as obtained by Hudson Bay Exploration and Development Ltd., as available in assessment files were used as a guide to locate favorable areas for examination. Operations on this property were part of a program of examining a number of prospects by the combined efforts of Comaplex Resources International Ltd. and Dayton Creek Silver Mines Ltd. Transportation to and from the property was by helicopter.

## GENERAL DESCRIPTION OF THE CLAIMS AREA

The prospect area presently consists of twelve mineral claims, COM Nos. 1-12 inclusive (YA 35692 - 35703) located in NTS 105-B-11, approximately five miles south of Irvine Lake, in the Watson Lake Mining Division, some ninety miles west-northwest of Watson Lake. COM 1-8 are presently registered in the name of M. W. Pyke of Calgary, Alberta and COM 9-12 are presently registered in the name of W. Fisher of Crystal Springs, Saskatchewan.

The property is situated at an elevation of 5000' A.S.L. and straddles a northwest trending ridge and a pronounced northwest trending draw. The claim area is above tree line and is covered by a dense growth of short bushes, grass and rock talus areas. Outcrop comprises up to 15% of the area.

Access to the property is by helicopter.

## GEOLOGY

The area was mapped at a scale of 1 inch equals four miles by Poole et al., 1960, G.S.C. Map 10-1960 which shows the claims area to be underlain by a north trending unit of Cambrian and (?) earlier biotite schist and quartzite bounded to the west by biotite schist and gneiss.

The detailed examination of the COM 5 and 7 claims shows an interbedded sequence of calcareous quartzite, phyllite and dolomite striking at  $160^{\circ}$  to  $180^{\circ}$  and dipping  $70^{\circ}$  to  $80^{\circ}$  west. A 500 foot thick serpentinite body was observed that appears conformable with the bedding of the metasediments.

The major structural feature observed is a shear zone which strikes at  $100^{\circ}$  and dips south at between  $20^{\circ}$  and  $40^{\circ}$ . The shear zone is fairly well exposed and exhibits a high degree of brecciation and mylonitization.

## DESCRIPTION OF MINERALIZED OCCURRENCES

Mineralization was noted at two localities within the interest area.

The first area examined is situated 250 feet south of the number 1 post of COM-7. Minor trenching of a small scarp face had been carried out by previous investigations and two small diameter (winkie?) diamond drill holes were seen above the scarp.

Mineralization consists of chalcocite and pyrite in a unit of silicified dolomite or calcareous quartzite. Beds of dolomite also exhibit malachite staining, however, no sulphides were seen in the dolomite unit. The mineralization is disseminated and low grade (less than 2 percent sulphides).

The two drill holes were located to test for mineralizations conformable to bedding.

The second area of mineralization is situated approximately 1000 feet west-northwest of the above described outcrop. The mineralization consists of malachite and traces of chalcocite in an area of weakly gossaned mylonite and breccia. Several small hand dug pits were observed.

It is apparent that both areas of copper mineralization is associated with the west trending shear zone which was not tested by drilling.

#### CONCLUSIONS

Insufficient time was spent on the property to adequately evaluate the property. Further geological mapping and a ground EM survey over the shear zone would determine whether significant copper sulphide mineralization may be present to warrant testing by diamond drilling.

STATEMENT OF COSTS

Since this program was part of a larger project carried out in this general area, a number of expenses have been prorated.

1. Services		
	K. Lintott, P. Geol. $\frac{1}{2}$ day @ \$250/day	\$125.00
	W. Fisher $\frac{1}{2}$ day @ \$ 75/day	37.50
2. Helicopter		340.67
3. Motel		15.00
4. Meals		15.00
5. Report preparation - K. Lintott $\frac{1}{2}$ day @ \$250/day		125.00
6. Transportation		
	Calgary-Watson Lake and Return 2 persons: $\frac{1}{4}$ of \$540.00	135.00
	U-Drive: 2/15 of \$435.82	<u>58.11</u>
		<u>\$851.28</u>

K. G. Lintott, P. Geol.  
November 6, 1979



## C E R T I F I C A T E

I, KENNETH G. LINTOTT, of the City of Calgary, in the Province of Alberta, certify as follows:

1. That I am a geologist residing at 11107 Braxton Road S.W., Calgary, Alberta.
2. That I have practiced my profession continuously since being graduated in Geology from the University of Alberta, Edmonton Campus, in the Province of Alberta, B.Sc., 1970.
3. That I am registered as a Professional Geologist in the Province of Alberta.
4. That I own shares of Comaplex Resources International Ltd., on whose behalf this report is written.
5. That I have continuously worked in geological and mining exploration in Canada and the United States for the past nine years and that the accompanying report is based on a one half day field investigation and a study of published reports.

DATED AT CALGARY, ALBERTA, THIS 26th DAY OF NOVEMBER, A.D., 1979.

Kenneth G. Lintott, B.Sc., P. Geol.