

ALLEN RESOURCE CONSULTANTS LTD.

GUY ALLEN, P.ENG. (B.C.), P.GEOL. (ALTA.)
CONSULTING GEOLOGIST

BOX 7248, POSTAL STATION "E" CALGARY, ALBERTA T3C 3M2

TELEPHONE (403) 266-6150



REPORT OF
INVESTIGATIONS

ON THE

COM # 21 - 26 CLAIMS (YA 35712 - 35717)

IRVINE LAKE AREA

WATSON LAKE MINING DIVISION

YUKON TERRITORY

- 6(v)(a) GEOLOGICAL REPORT
- (b) Com # 21-26 incl.
Claim Sheet 105 B/11
LAT. $60^{\circ}38'N$, LONG. $131^{\circ}08'W$
- (c) Guy Allen, P. Eng. - author, supervisor
- (d) July 6, 1979.

Guy Allen, P. Eng.
October, 1979



090604

This report has been examined by the Geological Evaluation Unit and is recommended to the Commissioner to be considered as representation work in the amount of \$ 1800.00

J. A. Morin

Resident Geologist or
Resident Mining Engineer

Considered as representation work under
Section 53 (4) Yukon Quartz Mining Act.


B. R. BAXTER

Supervising Mining Recorder

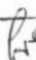

Commissioner of Yukon Territory

TABLE OF CONTENTS

	Page
Introduction	2
General Description of the Claims Area	2
Geology	2
Description of Mineralized Occurrence	2
Conclusions	3
Statement of Costs	3

LIST OF ILLUSTRATIONS

Plate No. 1 - Location Map	1
Plate No. 2 - Claims Locations and Prospecting	2

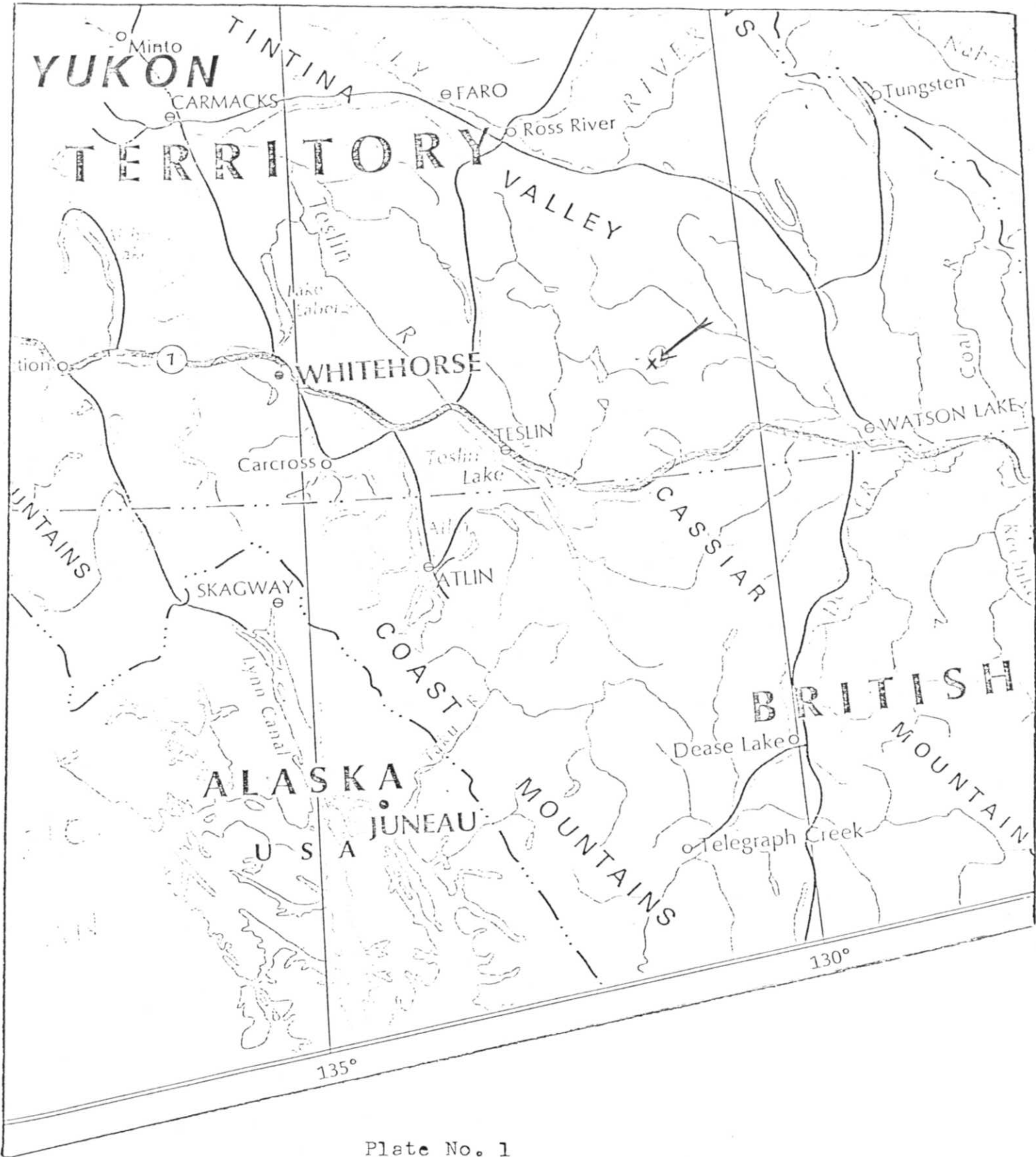
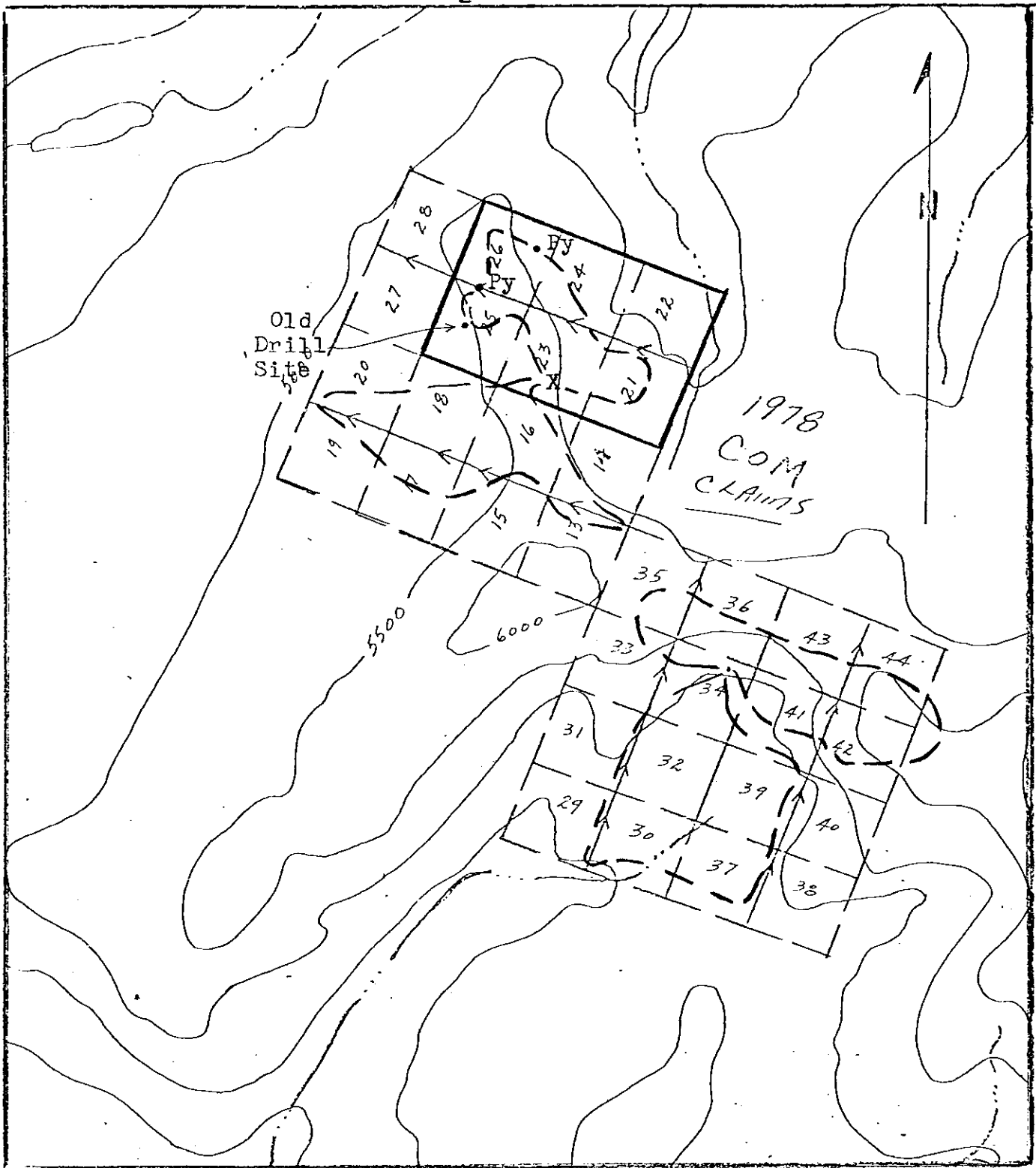


Plate No. 1

COM #21 - 26 CLAIMS

LOCATION MAP

Scale: 1 cm. = 25 mi.



105B/11

Plate No. 2

COM # 21 - 26 CLAIMS

CLAIMS LOCATION & PROSPECTING

Scale: 2 in. = 1 mi.

- X Trench Location
- Prospecting Traverses
- Py Pyrite

COM # 21 - 26 CLAIMSIntroduction

The writer, accompanied by Kenneth Lintott, P. Geol., Wayne Fisher, prospector, and David Allen, field assistant, spent one day (July 6, 1979) prospecting the Com # 21 - 26 mineral claims (YA 35712 - YA 35717 inclusive), and examining the mineral occurrence as exposed in the trench on Com #23. This program was part of a program of examination of a number of prospects by the combined efforts of Comaplex Resources International Ltd., and Dayton Creek Silver Mines Ltd. Transportation to and from the property was by helicopter.

General Description of the Claims Area

This prospect area presently consists of 32 mineral claims, Com Nos. 13 - 44 inclusive (YA 35704 - YA 35735 inclusive) located in NTS 105B/11, immediately to the north-northeast of Irvine Lake in the Watson Lake Mining Division, some 110 miles north of Watson Lake. The claims are registered in the name of Comaplex Resources International Ltd.

The property is located lapping over a sinuous northwest-trending ridge, which is dissected by small streams flowing southerly into Irvine Lake, and northerly into the Gravel Creek drainage system. The majority of the claims area is above the treeline. The ridge is moderately rounded with reasonable numbers of outcrop exposures. The slopes are not particularly steep with less rock exposure.

Access to the property is by helicopter, or small float-equipped aircraft to Irvine Lake. Travel by horseback would be possible in the area.

Geology

The prospect area is underlain by Lower Cambrian metasediments Mesozoic intrusives, part of the massive Cassiar batholith, and generally of a granodioritic composition.

Only portions of the metasedimentary sequence was observed on Com #21 - 26. This included quartzites and siliceous schist (see Plate No. 2)

Description of Mineralized Occurrence

On Com #23 is a trench, blasted in a previous exploration program, striking N30W, 33 feet long, 6 feet wide, and 3 feet deep. Starting from the southeast end of the trench, the exposed rocks are described as follows.

- 0' - 6': Covered. Rubble is siliceous schist, light to medium grey, speckled, with good lineation, flaggy in part, some carbonaceous material. Contact strike N60E
- 6' - 8.5': Covered. Rubble is highly gossaned material, very limoni-

tic, solution cavities. Ten percent of the material is a black, spongy, manganiferous rock.

8.5' - 17': Mainly black, manganiferous material, soft, with vesicles and inclusions, partly spongy. Strike and dip impossible to determine

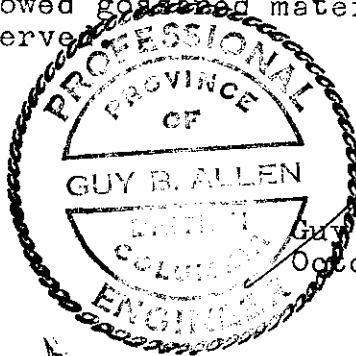
17' - 29': Siliceous Schist - sandy, very argillaceous, light brown, blocky, weathers buff

29' - 33' Siliceous Schist - medium grey, banded, blocky

No sulphide mineralization was observed at this locale, and hence no samples were taken for assay. The only sulphides that were observed on the prospected area were pyrite inclusions in quartzites on Com Nos. 26 and 25.

Conclusions

No sulphide minerals other than pyrite were observed on the property. The trench on Com #23 showed gossamed material with limonite. No fresh sulphides were observed.

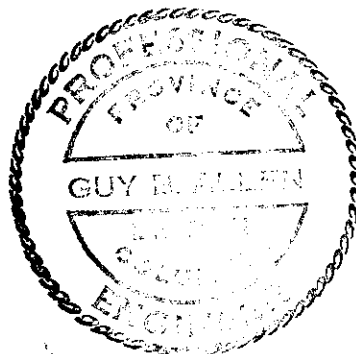


Guy Allen
Guy Allen, P. Eng.
October 12, 1979

Statement Dated April 22, 1980

Since this program was a part of a larger project carried out in this general area, a number of expenses have been prorated.

1. Services:	
G. Allen, P. Eng. 1 day @ \$250.00	\$250.00
K. Lintott, P. Geol. 1 day @ \$250.00	\$250.00
W. Fisher 1 day @ \$75.00	\$75.00
D. Allen 1 day @ \$35.00	\$35.00
2. Helicopter	\$766.50
3. Motel	\$60.00
4. Meals	\$60.00
5. Report Preparation	
G. Allen, P. Eng. $\frac{1}{2}$ day @ \$250.00	\$125.00
6. Transportation	
Calgary - Watson Lake & return; $\frac{1}{4}$ of \$1,080	\$270.00
U-Drive; $\frac{1}{5}$ of \$435.82	\$87.16
Total	\$1,978.66



Guy Allen
Guy Allen, P. Eng.
October 12, 1979