

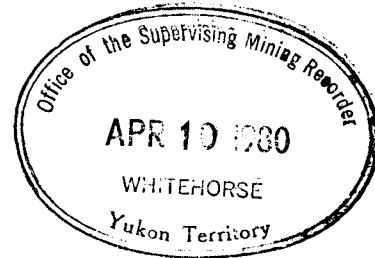
ARCHER, CATHRO
AND ASSOCIATES LTD.
CONSULTING GEOLOGICAL ENGINEERS

Box 4127, Whitehorse, Y.T. Y1A 3S9 667-4415

STANDARD BUILDING, VANCOUVER, B.C. 688-2568



1016 STANDARD BUILDING
510 WEST HASTINGS STREET
VANCOUVER, B. C.
V6B 1L8



REPORT ON
GEOLOGICAL AND GEOCHEMICAL SURVEYS

CONDUCTED JULY 10, 1979

FIRST 1-8 CLAIMS YA24555-YA24562

WHITEHORSE MINING DISTRICT
CLAIM SHEET 105F/10

Latitude 61°32'N

Longitude 133°18.5'W

J.G. ABBOTT, P.Eng.

090554

This report has been examined by the Geological Evaluation Unit and is recommended to the General Manager to be considered as representing the amount of

\$ 800.00

J. A. Morin

Principal Geologist or
Mining Engineering Engineer

Considered as representation work under
Section 53 (4) Yukon Quartz Mining Act.


E. R. BAXTER

Supervising Mining Recorder



Commissioner of Yukon Territory

TABLE OF CONTENTS

	<u>PAGE</u>
Summary and Recommendations -----	1
Introduction -----	1
Property, Location and Access -----	2
Field and Analytical Procedures -----	2
Geomorphology -----	3
Geology -----	3
Geochemistry -----	4
Conclusions -----	4

ILLUSTRATIONS

<u>FIGURE NO.</u>		<u>FOLLOWING PAGE</u>
1	Location Map	2
2	Geology and Geochemistry, First 1-8 Claims	3

SUMMARY AND RECOMMENDATIONS

The First 1-8 claim group is located within the Pelly Mountains in central Yukon. It was staked by CUB Joint Venture to cover lead, zinc and silver anomalies from the G.S.C.'s Uranium Reconnaissance Program. The claims are underlain by late Proterozoic or early Paleozoic schist and limestone, Cretaceous granodiorite and Tertiary quartz feldspar porphyry. Grid soil sampling failed to reveal any geochemical anomalies and no surface showings were found.

INTRODUCTION

The First 1-8 claim group was staked in June, 1979 by CUB Joint Venture (Cassiar Asbestos Corporation Ltd., Highland Crow Resources Ltd., and Union Carbide Canada Ltd.). The claims were staked to cover two anomalous silt samples from the G.S.C.'s Uranium Reconnaissance Program which gave values of 159 Pb, 360 Zn, 1.1 Ag and 63 Pb, 150 Zn, 0.6 Ag.

The claims were grid soil sampled and mapped by A. Halleran and N. Peck on July 10, 1979. The program was supervised by Grant Abbott of Archer, Cathro and Associates Ltd.

PROPERTY, LOCATION AND ACCESS

The property consists of eight contiguous claims recorded in the name of Archer, Cathro and Associates Ltd. at the Whitehorse Mining Recorder's office as follows:

<u>Claim Name</u>	<u>Grant Numbers</u>	<u>Expiry Date</u>
First 1-8	YA24555-YA24562	26 June/80

The First 1-8 claims are located near the headwaters of Caribou Creek at 61°32'N, 133°18.5'W; 130 km NE of Whitehorse and 20 km west of the Canol Road. Access in 1979 was by helicopter from a base camp located 13 km to the southeast at Rose River Bridge No. 2 on the Canol Road.

FIELD AND ANALYTICAL PROCEDURES

Both the baseline and sampling lines were located by using compass and topofil without slope corrections. Stations were marked with ½ m lath pickets above timberline and flagging below timberline.

Soil samples were collected in kraft envelopes and were shipped to Chemex Labs Ltd., North Vancouver, B.C. for routine geochemical analysis. All samples were analyzed for tungsten with a colorometric determination after fusing with potassium bisulfate, leaching with concentrated HCl, extracting into an amly acetate solution containing dithiotoluene, and reducing interfering elements with stannous fluoride in a hot bath. Samples were also analyzed for lead and zinc using atomic absorption spectrometry of a nitric-perchloric digestion.

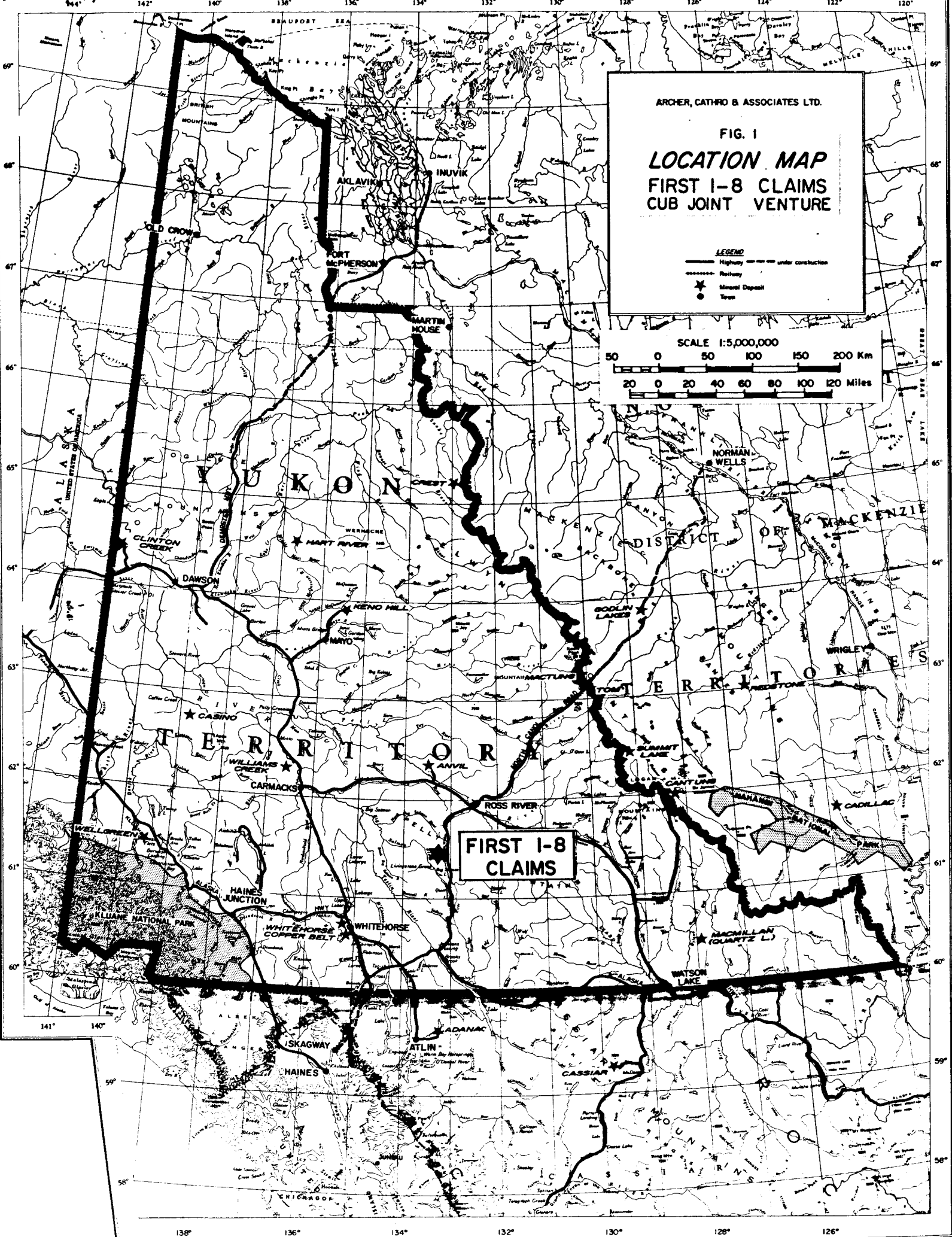
ARCHER, CATHRO & ASSOCIATES LTD.

FIG. 1
LOCATION MAP
FIRST 1-8 CLAIMS
CUB JOINT VENTURE

LEGEND
Highway ——— under construction
Railway ———
Mineral Deposit ★
Town ●

SCALE 1:5,000,000
50 0 50 100 150 200 Km
20 0 20 40 60 80 100 120 Miles

FIRST 1-8 CLAIMS



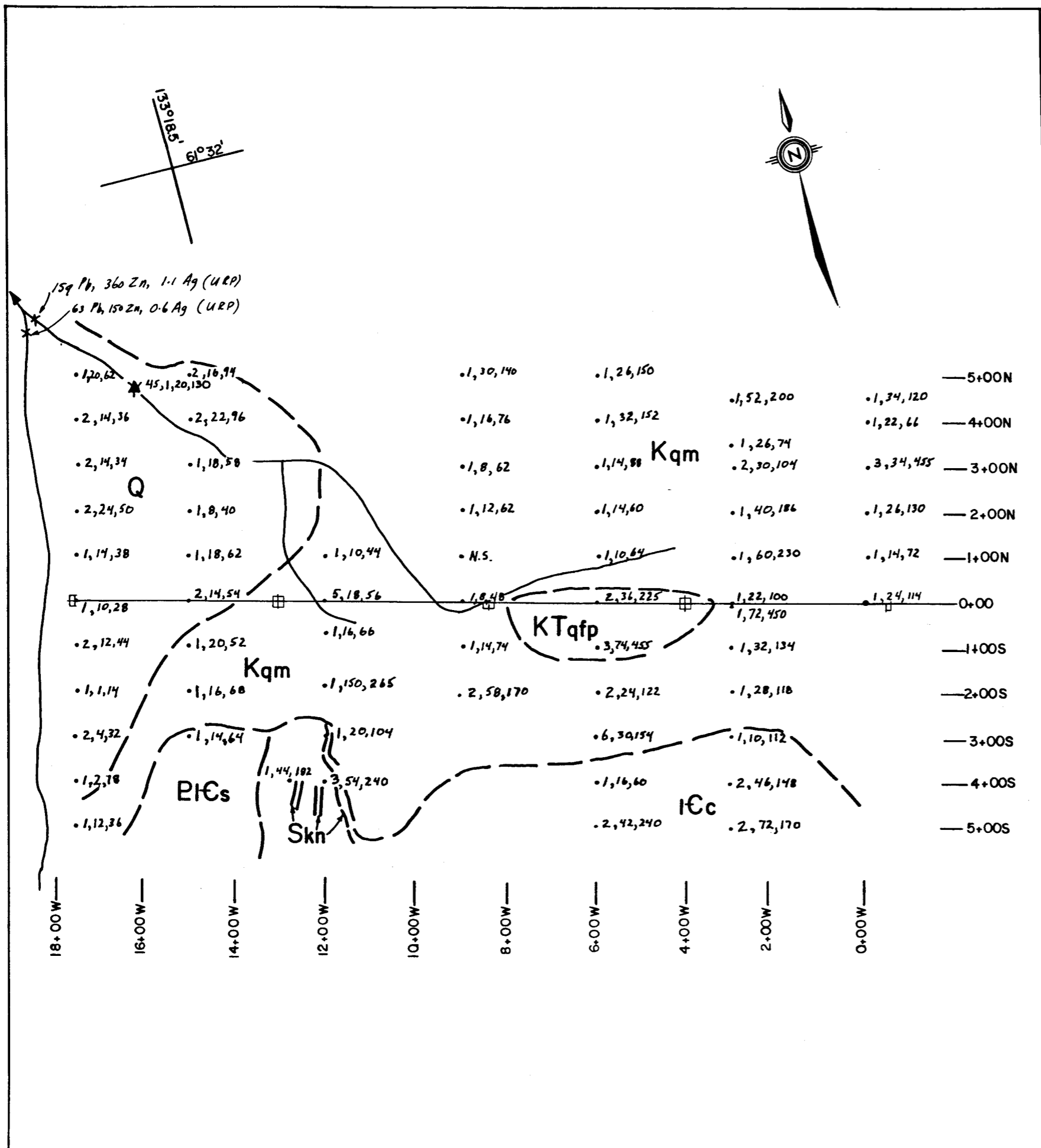
GEOMORPHOLOGY

The claim group is situated at timberline (1700 m elevation) along the floor of a small east-trending valley. The western end of the claims are covered by a thick layer of alluvium, but outcrop is widespread over the rest of the claims. Outcrop is also abundant on parallel ridges that bound the claims on the north and south.

GEOLOGY

The geology and geochemistry of the First 1-8 claims is shown on Figure 2 at a scale of 1:10,000. The property is underlain by upper Proterozoic and/or lower Proterozoic metasedimentary rocks and Cretaceous and/or Tertiary intrusions. Rusty weathering biotite muscovite schist of unit P16s, exposed in the northwestern corner of the property, is the oldest rock unit. It is interbedded with dirty grey weathering, medium-grained marble of unit 16c. Both units are of uncertain thickness. Rocks equivalent to those of unit P16s form sequences up to several thousand meters thick along the western margin of the Pelly Mountains. Nearby marble lenses equivalent to unit 16c form lenses up to 20 or 30 m thick.

Medium-grained granodiorite or quartz monzonite of unit Kqm underlies most of the property. The unit is similar to the Cretaceous granitic rocks that occur throughout central Yukon. Near the First claims, the granitic rocks do not form a discrete batholith. Instead, they occur as sills and dykes within the metamorphic rocks. On a regional scale, the intrusive and metamorphic rocks cannot be mapped separately and have been included within a single unit (Pnt) that has been interpreted as an injection migmatite by Templeman-Kluit.



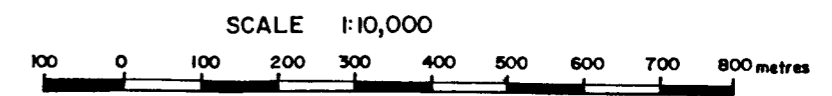
LEGEND

- QUATERNARY**
 [Q] Glacial till
- CRETACEOUS and/or TERTIARY**
 [KTqfp] Quartz feldspar porphyry
 [Kqm] Medium grained quartz monzonite
- LOWER CAMBRIAN**
 [ICc] Dirty grey weathering medium grained limestone
- LOWER CAMBRIAN & OLDER**
 [PtCs] Rusty weathering, biotite muscovite schist
 [Skn] Skarn
- Probable geologic contact
- .10,50,500 PPM W,Pb,Zn
 *45,T grains scheelite/pan, PPM W
- URP Uranium Reconnaissance Program
 □ Claim posts

FIGURE 2
 ARCHER, CATHRO & ASSOCIATES

GEOLOGY & GEOCHEMISTRY

FIRST CLAIMS 1-8
 CUB JOINT VENTURE



Rusty weathering quartz-feldspar porphyry of unit KTqfp occurs as a dyke or small plug in the center of the claim group. In western Quiet Lake map area, similar rocks occur as dyke swarms and very small plugs.

Unmineralized, pale garnet diopside skarn occurs in narrow zones within limestone near the granite (Kqm) contact but no mineralization was seen on the property.

GEOCHEMISTRY

A total of 62 soil samples were taken over the claims at 50 m intervals on lines spaced 300 m apart. Five widely spaced, anomalous lead values ranging from 58 to 150 ppm Pb were obtained. All other values are background.

CONCLUSIONS

The source of the G.S.C. silt anomaly has not been found. However, it is unlikely that a large mineral deposit underlies the First claims because the amount of rock exposed is too great and the few lead soil anomalies that were obtained are too low and scattered to be significant.

Respectfully submitted,

ARCHER, CATHRO AND ASSOCIATES LTD.



/mc

J.G. Abbott, P.Eng.