

CCH RESOURCES LTD.

ASSESSMENT REPORT

REGIONAL GEOCHEMICAL SURVEY

JABBERWOCK GROUP 1-24

115 - P - 15

63° 48'

136° 57'

MAYO AREA

YUKON TERRITORY

090474
ANGUS WOODSEND
MAY 11, 1979

This report has been examined by the Geological Evaluation Unit and is recommended to the Commissioner to be considered as representation work in the amount of

\$ 5,300.⁰⁰

R. Debicki

Acting Resident Geologist or Resident Mining Engineer *July 15/79*

Considered as representation work under Section 53 (4) Yukon Quartz Mining Act.

B. R. BAXTER
Supervising Mining Recorder

Commissioner of Yukon Territory

C O N T E N T S

	<u>Page</u>
1. INTRODUCTION	1
2. EXPLORATION HISTORY	2
3. GENERAL GEOLOGY	2
4. GEOCHEMICAL METHODS	2
5. GEOCHEMICAL RESULTS	3
6. RECOMMENDATIONS	3
7. STATEMENT OF QUALIFICATIONS	4
8. STATEMENT OF EXPENDITURES	5

ATTACHED

Jabberwock 1-24 claim sketch map	½ mile= 1 inch
TY 23 Reconnaissance Geochemistry	1: 10,000

INTRODUCTION

The Jabberwock claims lie near the western headwaters of Fortymile Creek near the Mayo-Dawson Mining Area boundary. A claim sketch is attached.

The claims are owned by CCH RESOURCES LTD. of Toronto, Ontario.

The work outlined in this report was conducted intermittently from August 25th., 1978 to September 10th., 1978 by CCH RESOURCES LTD. as part of the Cortin Joint Venture's exploration program.

EXPLORATION HISTORY

The only recorded activity in the area was from 1971-2 by Silver Standard M.L. who own 74% of the Sterling Claims (Asarco 26%). They report surface exploration, geophysics, geochemistry, trenching and diamond drilling on this silver property. The Jabberwock Group was staked in 1978 after stream sediments at the head of Fortymile Creek were found to carry 195 and 660 ppm Sn, (See Map TY-23). This latter value lies well downstream from the claim group, an example of one of the peculiarities of tin dispersion.

GENERAL GEOLOGY

Outcrop is generally poor, but being above treeline with thin overburden cover, tracing soil anomalies to bedrock should not be any problem. Several narrow granitic dykes exhibiting brecciation, goethite-limonite staining, and parallel quartz veining attest to an active hydrothermal history, though major intrusions are apparently absent.

The country rocks are a monotonous pile of highly folded Yukon Schists with interbedded quartzites and occasional limestone beds.

GEOCHEMICAL METHODS

Several geochemistry traverses have been run along claim lines 900 m apart, widely spaced even for reconnaissance coverage. In addition two contour lines were run along the north-east facing hill slope. The -80 mesh fraction of all samples was analyzed for Sn, W, Cu, Pb, Zn, Ag, Mo, As by Bondar-Clegg in their Whitehorse, Vancouver and Ottawa laboratories.

GEOCHEMICAL RESULTS

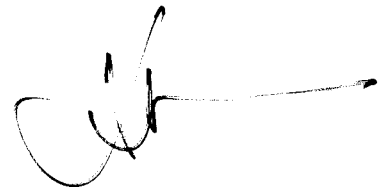
Sampling claim lines and completing two contour lines showed that the majority of the tin values are on the Jabberwock property though apophyses do cross into the Sterling claims.

At a reconnaissance scale, Sn, As and Zn anomalies plot on the south-west side of the creek, whereas Ag plots north-east; an interesting geochemical split.

RECOMMENDATIONS

More detailed sampling should tie-down the tin source. With any luck trenching will quickly reveal bedrock detail, and drill targets can then be planned.

Vancouver, B.C.
May 11, 1979

A handwritten signature in black ink, appearing to read 'Angus Woodsend', with a long horizontal stroke extending to the right.

Angus Woodsend
Senior Geologist

STATEMENT OF QUALIFICATIONS

The work on the Jabberwock claims was conducted under the supervision of A. Woodsend, the author of this report.

Mr. Woodsend is a Senior Geologist for CCH RESOURCES. He holds a B.Sc. (Hons) Degree in Geology from Southampton University, England, and has practised his profession continuously for eight years in a variety of countries and geological environments.


He was assisted principally by C. Blacksmith of Miquelon, Quebec, and H. Happyjack of Waswanipi, Quebec.

STATEMENT OF EXPENDITURES

Only those samples taken on the Jabberwock group have been included in these calculations.

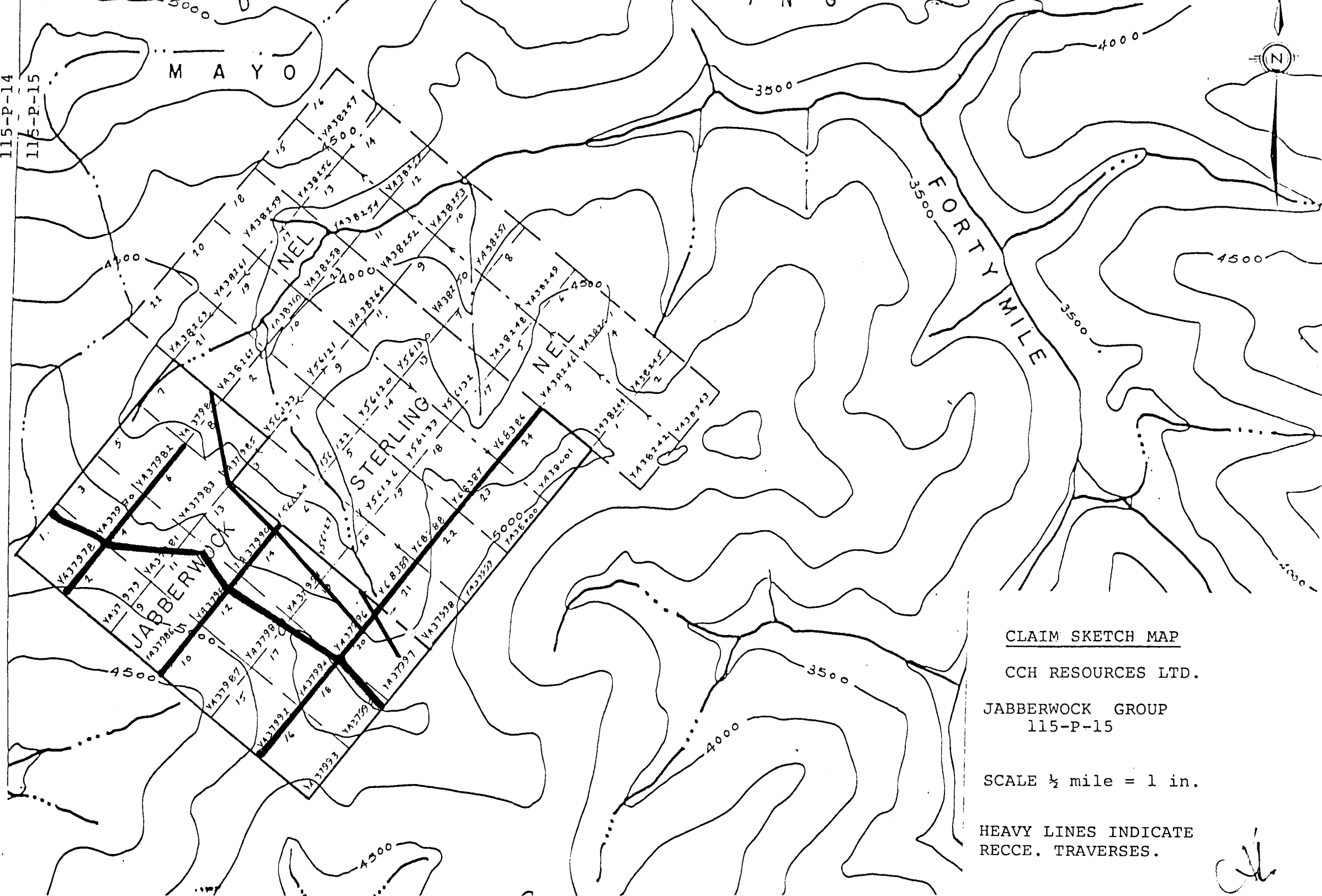
220	Soil samples analyzed at \$7.80 per sample	\$ 1,716.00
4	Stream sedimet samples analyzed at \$7.80 per sample	31.00
2	Assistants for 4 days at \$40.00 per man per day	320.00
1	Geologist for 1 day at \$50.00 per man per day	50.00
9	Hours helicopter at \$300.00 per hour	2,700.00
	Drafting and interpretation	500.00
		<hr/>
		\$ 5,317.00
		<hr/> <hr/>

Vancouver, B.C.
May 11, 1979


Angus Woodsend
Senior Geologist

115-P-14
115-P-15

M A Y O



CLAIM SKETCH MAP

CCH RESOURCES LTD.

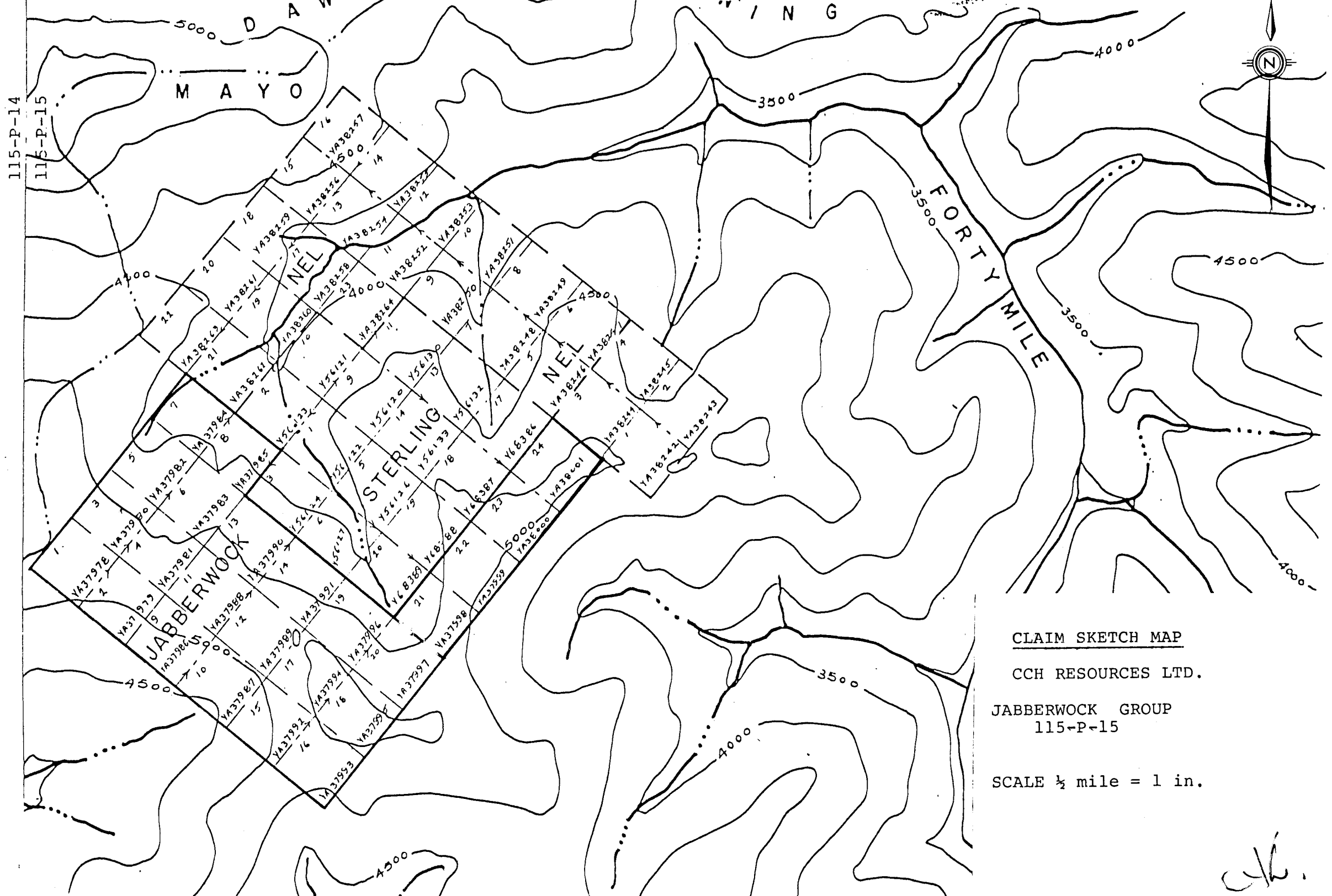
JABBERWOCK GROUP
115-P-15

SCALE 1/2 mile = 1 in.

HEAVY LINES INDICATE
RECCE. TRAVERSES.

115-P-14

115-P-15



CLAIM SKETCH MAP
 CCH RESOURCES LTD.
 JABBERWOCK GROUP
 115-P-15

SCALE 1/2 mile = 1 in.

ck