

# ASSESSMENT REPORTS

Whitehorse M.D.

1158-2

MAP No.

TYPE OF WORK: Geochemical Report

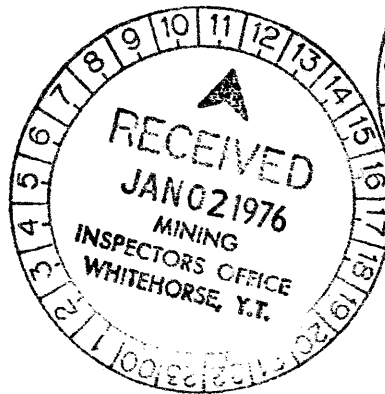
REPORT FILED UNDER	Sproatt Silver Mines Ltd.	090049
DATE PERFORMED	June 24-July 10'75	DATE FILED: 24 December, 1975
LOCATION - LAT.	63°05'N	Beaver Creek area, Yukon.
LONG.	140°55'W	
CLAIM Nos.	Block 1-16	
Grant #	Y92784-92801	
WORK DONE BY	Glen S. White B. Sc.	
WORK DONE FOR	Sproatt Silver Mines Ltd.	
REMARKS	The report concerns a geochemical soil sampling program for Pb, Ag, Au on ground which is underlain by foliated hornblende biotite granodiorite of the Mesozoic batholith	
	(over)	

\$5,579.00

GEOCHEMICAL REPORT  
SPROATT SILVER MINES LTD.

Hue claims, Moosehorn Range, Beaver Creek, Yukon  
Lat. 63°05'N Long. 140°<sup>05</sup>85'W N.T.S. 115 N/2

AUTHOR: Glen E. White B.Sc.  
DATE OF WORK: June 24 - July 10, 1975  
DATE OF REPORT: October 20, 1975

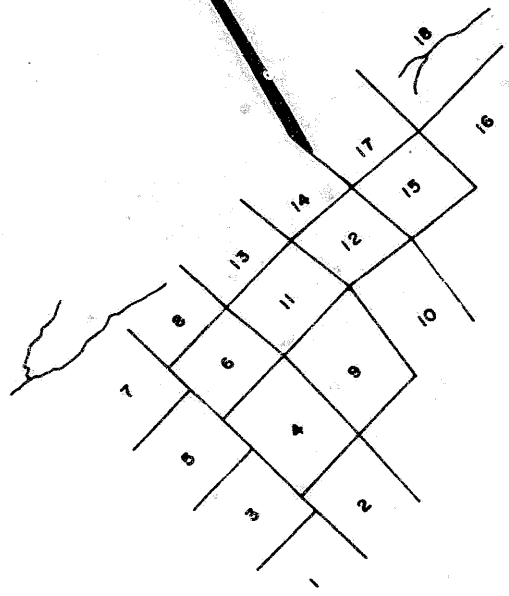
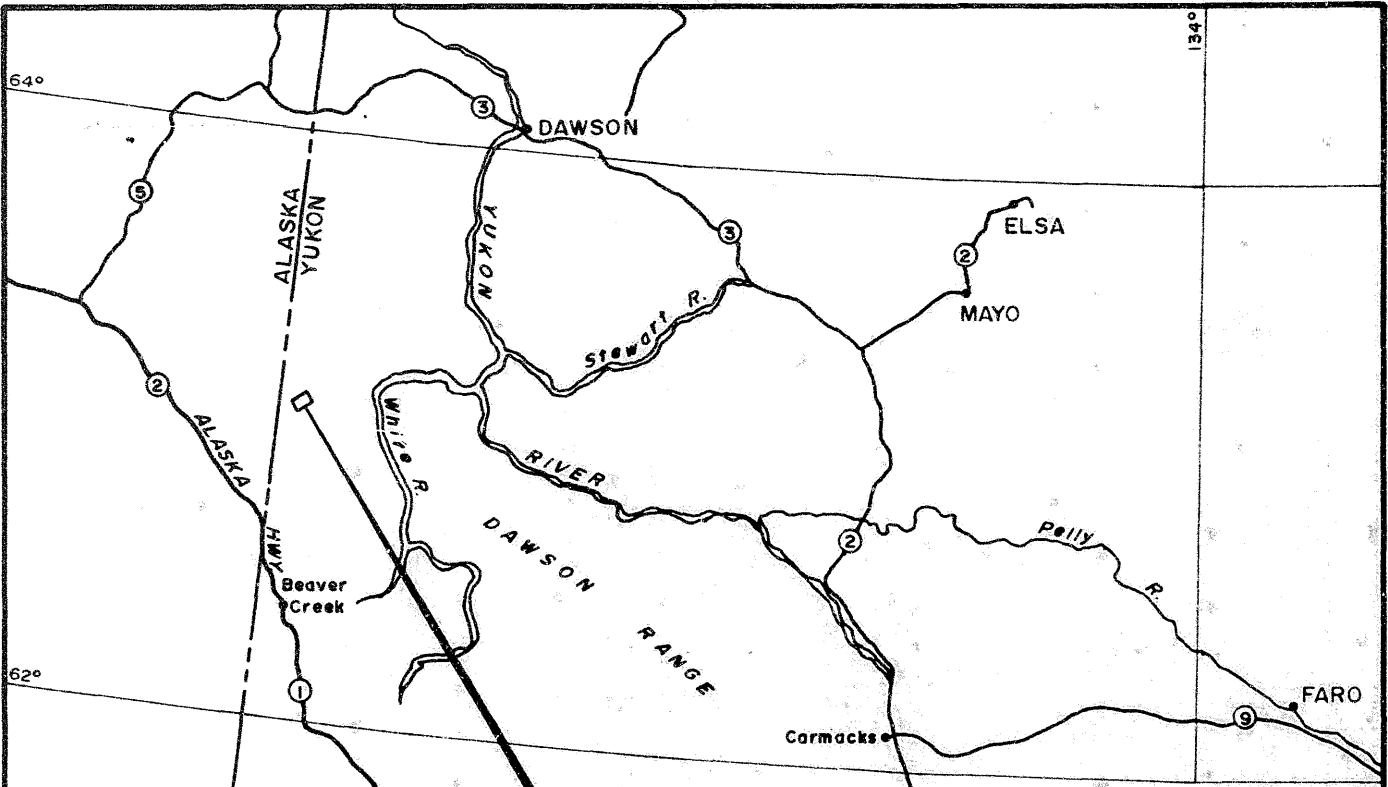


This report has been examined by the Geological Evaluation Unit and is recommended to the Commissioner to be considered as representation work in the amount of \$5579.00

*[Signature]*  
Resident Geologist or  
Resident Mining Engineer

Considered as representation work under Section 53 (4) Yukon Quartz Mining Act.

*[Signature]*  
B.R. BAXTER  
Supervising Mining Recorder  
Commissioner of Yukon Territory



**SPROATT SILVER MINES LTD.**

**HUE CLAIMS**

**LOCATION AND CLAIMS MAP**

SCALE : LOCATION MAP : 1" = 50 MILES APPROX.

CLAIMS MAP : 1/2" = 1500 APPROX.

*Glen C. White  
geophysical consulting  
&  
services ltd.*

# C O N T E N T S

	<u>PAGE</u>
Introduction.....	1
Property.....	1
Location and Access.....	1
General Geology.....	1
Survey Specifications	
(a) Survey Grid.....	2
(b) Geochemical Survey.....	2
Discussion of Results.....	2 - 3
Conclusion and Recommendations.....	3
Statement of Qualifications.....	4

## INTRODUCTION

During the period June 24 to July 10, 1975, a program of geochemical soil sampling was conducted on the Hue claims, Beaver Creek area, Yukon Territory, by Glen E. White Geo-physical Consulting & Services Ltd. The survey was conducted on behalf of Sproatt Silver Mines Ltd. of Vancouver, B.C. This area of interest was created by the discovery of gold, silver, lead, zinc and arsenopyrite mineralization by Great Bear Mines Ltd. and Claymore Resources Ltd. Thus the geochemical survey was conducted to try and detect any evidence of mineralization amongst the moss covered felsenmeer.

## PROPERTY

The property consists of the Hue 1 - 18 mineral claims as illustrated in Figure 1.

## LOCATION AND ACCESS

The property is located along the Moosehorn Range, some 58 miles north of Beaver Creek which is at Mile 1202 on the Alaska Highway some 285 miles northwesterly of Whitehorse Yukon Territory. Latitude 63°05'N, Longitude 140°85'W, N.T.S. 115 N/Z

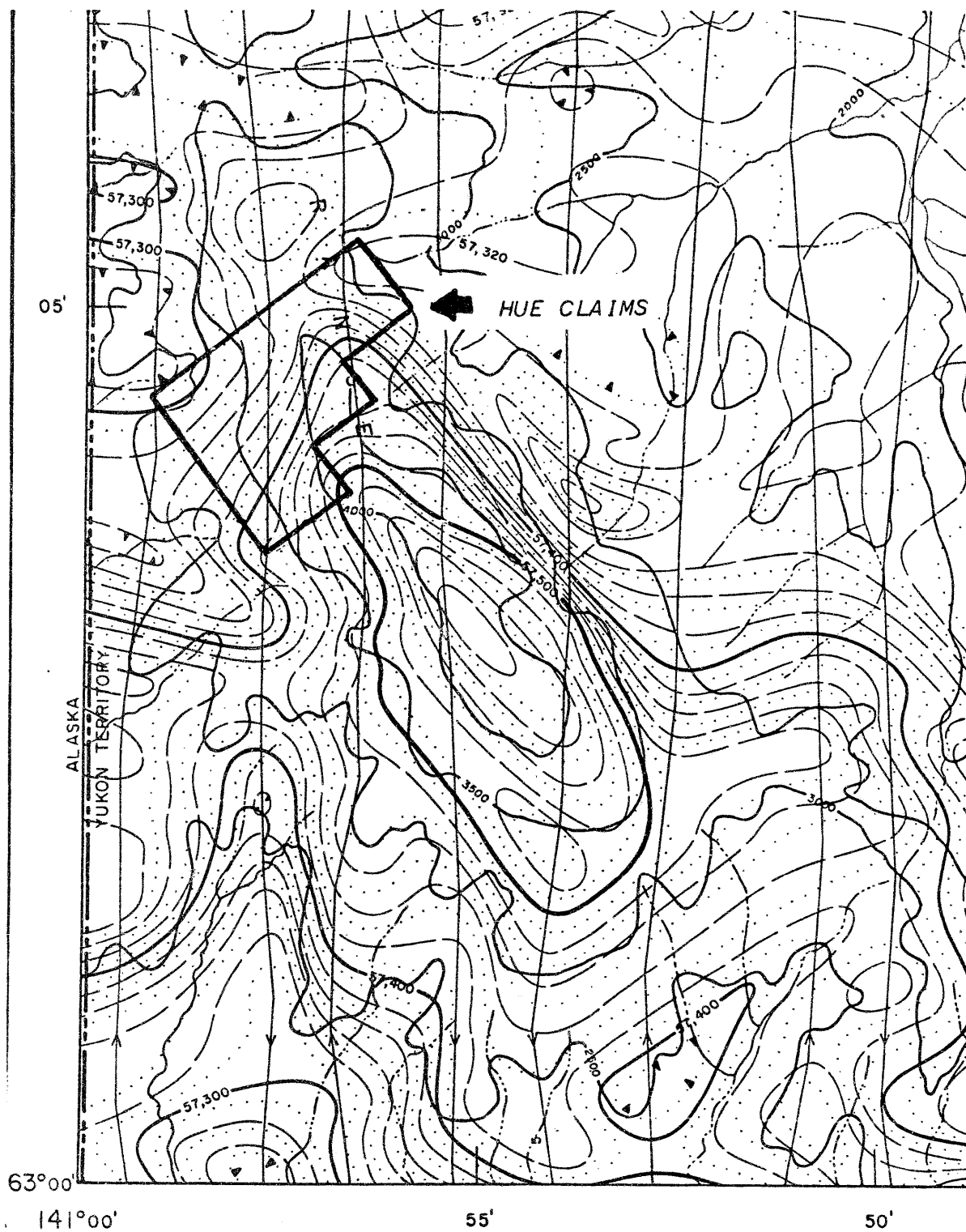
Access to the property is by helicopter from Beaver Creek.

## GENERAL GEOLOGY

The property is at an elevation of approximately 3500 feet a.s.l. and is covered with frost-broken, moss-covered talus or felsenmeer.

The geology of the area is described on G.S.C. Map 18-1973, Paper 73-41; Geology Stewart River, by Tempelman-Kluit, 1970-72.

The area is underlain by undifferentiated hornblende, granodiorite and gneisses believed to be Triassic in age. The granodiorite varies from fine to coarse grained and in places is strongly foliated. The sulphide mineralization and visible free gold appear to be associated with northerly directed brecciated quartz and feldspar filled tectonic structures.



SPROATT SILVER MINES LTD.  
Magnetic Intensity

*Glen C. White*  
geophysical consulting  
&  
mining ltd

PLATE I

## SURVEY SPECIFICATIONS

### Survey Grid

The survey lines are orientated in a northeast-southwest direction and are turned off at right angles every four hundred feet from a northwest-southeast baseline and numbered from 0 to 56 NW in a southeast direction to avoid sample or grid confusion from surrounding claims.

### Geochemical Survey

The survey area was largely covered with felsenmeer, thus each sample point was a composite of a number of samples obtained around the station to be sampled. Some 500 soil samples were collected and shipped to Chemex Labs Ltd. of North Vancouver.

A 5 gram sample of -80 mesh material was ashed and digested in 20 mls of aquaregia until dry. This was repeated. The sample was then leached in 75 mls of 25% HCl, transferred to a separatory funnel and 3 mls of 48% hydrobromic acid plus 10 mls of methylisobutylketone (MIBK) were added and shaken for 1 minute. The organic layer was separated out and washed with 25 mls of wash solution by gentle shaking. To test for gold in p.p.b., the sample was then run on an atomic absorption unit against prepared standards.

The silver and lead values were obtained from a hot perchloric-nitric acid digestion and analysis by atomic absorption.

## DISCUSSION OF RESULTS

The lead, silver and gold geochemical values are illustrated in Figure 2. Plate 1 shows the claim group with respect to the surrounding airborne magnetometer data at a scale of 1 inch to 1 mile. The magnetic high shows a general northwest-southeast trend with the Hue claims laying along the northwest nose. Both the Claymore and Great Bear showings lie on and along the flanks of this magnetic feature.

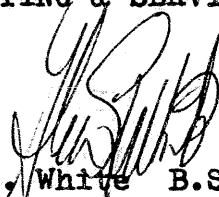
The lead geochemical data shows a very low background with anomalous values being 20 p.p.m. and greater. Several spotty lead values were located which show no correlation. Several random silver values in the order of 0.5 to 1.5 p.p.m. were also detected. The gold geochemical values are all located in one general area, in the southeastern corner of the survey grid. The ground cover is moss-covered felsenmeer and it is possible that these gold values may reflect a buried northwest trending gold-bearing structure. However, this is largely conjectural due to the statistical clustering of the gold values with respect to the airborne magnetometer data.

#### CONCLUSION AND RECOMMENDATIONS

During the summer of 1975, a program of geochemical soil sampling was conducted over the Hue mineral claims, Beaver Creek area, Yukon, on behalf of Sproatt Silver Mines Ltd.

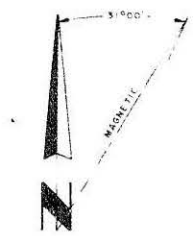
The survey located spotty lead and gold geochemical values which show no definite correlation. Thus, it is recommended that the property be held in abeyance pending successful exploration developments by Claymore Mines Ltd., which has several showings adjoining the Hue claims along the southern boundary.

Respectfully submitted,  
GLEN E. WHITE GEOPHYSICAL  
CONSULTING & SERVICES LTD.



Glen E. White B.Sc.  
President

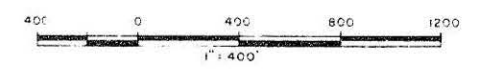
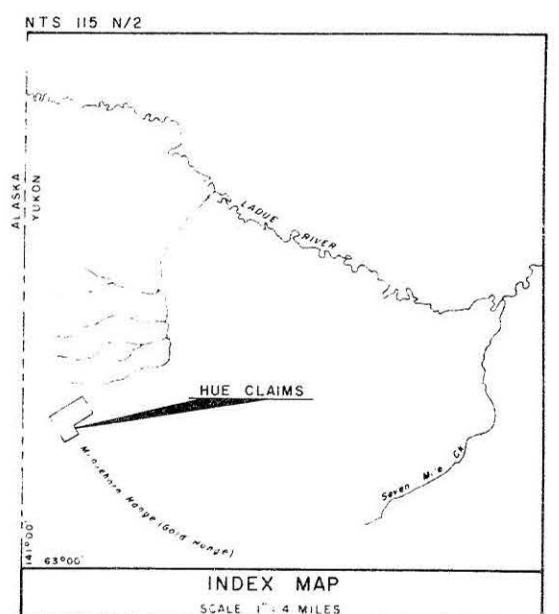




**LEGEND**

- Contour Line Contour Interval
- Outline of Claims
- Claim Posts
- Unimproved Roads
- Lead 12
- Silver 4
- Gold 30

**LEAD KEY**



<b>SPROATT SILVER MINES LTD.</b>	
HUE CLAIMS	
DAWSON MINING DISTRICT - YUKON TERRITORY	
GEOCHEMICAL MAP	
LEAD PPM, SILVER PPM GOLD PPB	
<i>John &amp; White geophysical consulting services Ltd.</i>	INTERPRETED BY: GEW DRAWN BY: MCD CHECKED BY: DATE: SEPT. 23, 1975 FIG. No. 2

In A. Sproatt's Geological Report  
The Hue Claims Area  
Dated 05-24-75  
S. G. 115 N/2

