

PROSPECTUS
Dec. 3, 1987.
06 2285

PRELIMINARY FIELD EXAMINATION REPORT

ON THE

PYROXENE MTN. CLAIMS

BTT 01 - 032

YA 87943 - 974

Dawson Mining Division

Stewart River, Yukon

63° 02' N / 138° 15' W

N.T.S. N 115-0-1

for

DORON EXPLORATION INC.

1500 - 609 Granville Street

Vancouver, B.C.

V7Y 1G5

by

J.E. WALLIS, P.ENG.

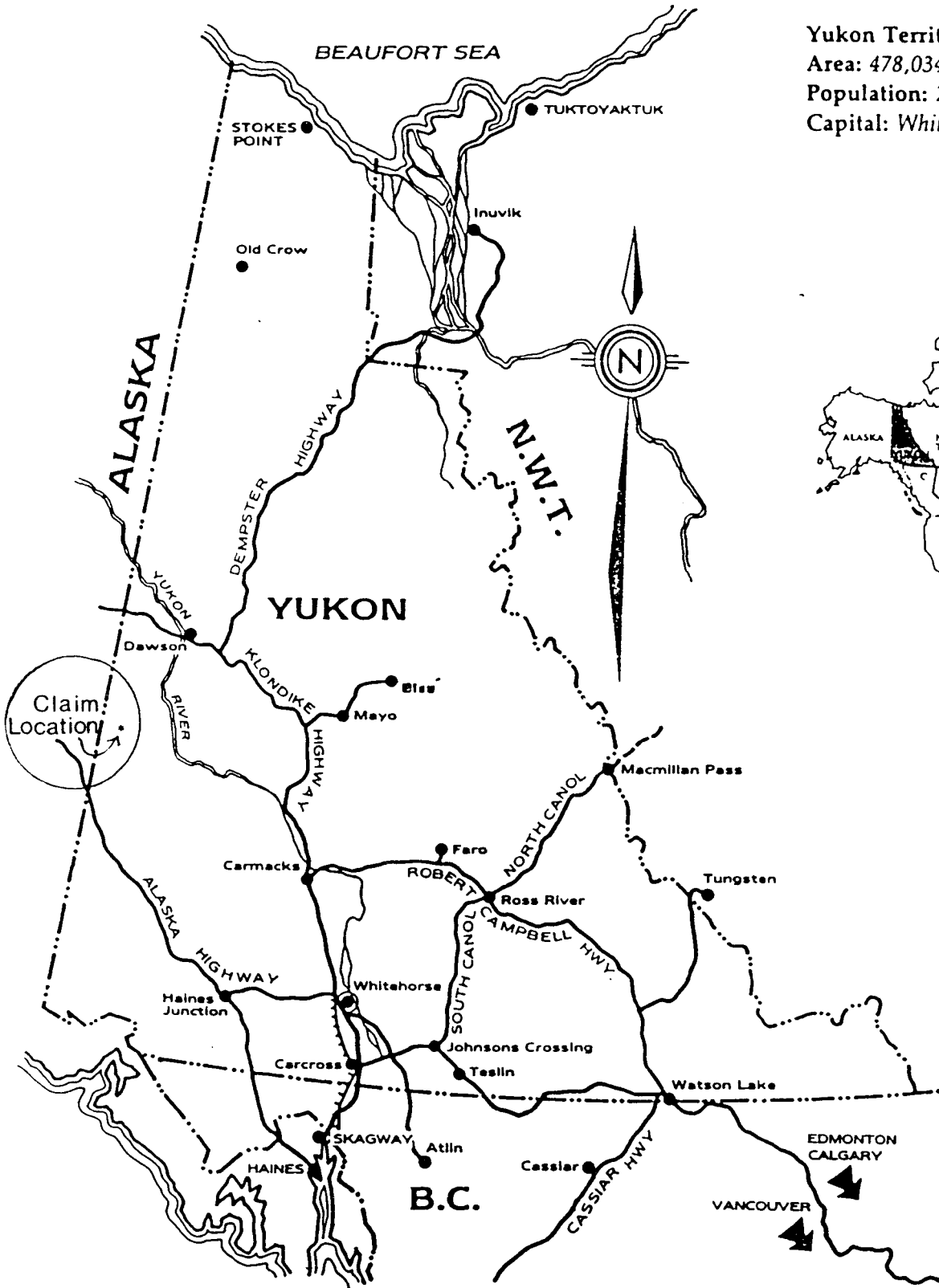
214 - 475 Howe Street

Vancouver, B.C.

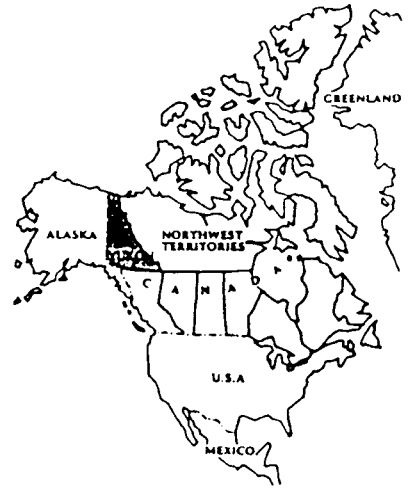
May 12, 1987

TABLE OF CONTENTS

	Page
Location Map	1
Introduction	1
Location and Access	2
Topography and Physiography	2
Claim Status	3
Figure 1 - Claim Map	3
History	4
Geology	5
Table 1 - Klondike Formations	5
Figure 2 - Geology Map, Pyroxene Mtn.	6
Discussion and Results	7
Recommendations	8
Certificate	9



Yukon Territory
 Area: 478,034 sq. km.
 Population: 25,000
 Capital: *Whitehorse*



INTRODUCTION

The Pyroxene Mountain claims of Doron Exploration Inc. were examined by the writer on August 25, 1986. Rain and drifting fog in the area restricted the inspection to a general overview of the geology underlying the claim area.

LOCATION AND ACCESS

The BTT 01-032 mineral claims cover the bulk of the upper slopes of Pyroxene Mountain and are centred on co-ordinates 63° 02' North Latitude and 138° 15' West Longitude.

Best access to the property is via helicopter from Dawson City, located some 70 miles to the north. A gravel airstrip is located at the junction of Scroggie and Valhalla Creeks, approximately 12 miles to the northwest. The Scroggie airstrip is suitable for most light twin engine aircraft to the size of a twin otter. Access from the airstrip to Pyroxene Mtn. is via dozer trail up either Mariposa Creek or Alberta. Both these trails are suitable for 4-wheel Honda type A.T.V.'s.

Road access to the area is a total distance of 100 miles of winter road along the old Dawson Trail from the Klondike Highway at Pelly Crossing to the Scroggie airstrip. The road is primarily used to haul supplies to the Stewart River placer operations during early spring; it is not suitable for summer travel.

Dawson City is serviced by daily scheduled flights from Whitehorse, Yukon. Whitehorse has daily scheduled 737 jet flights from Vancouver, B.C. and Edmonton, Alberta.

TOPOGRAPHY AND PHYSIOGRAPHY

Topography of the claim area varies from 2,450 feet elevation to 4,551 feet at the top of the Pyroxene Mountain. The lower elevations are covered with willow, scrub spruce and balsam. The higher elevations are typically alpine and covered with alpine grasses and some short arctic birch.

CLAIM STATUS

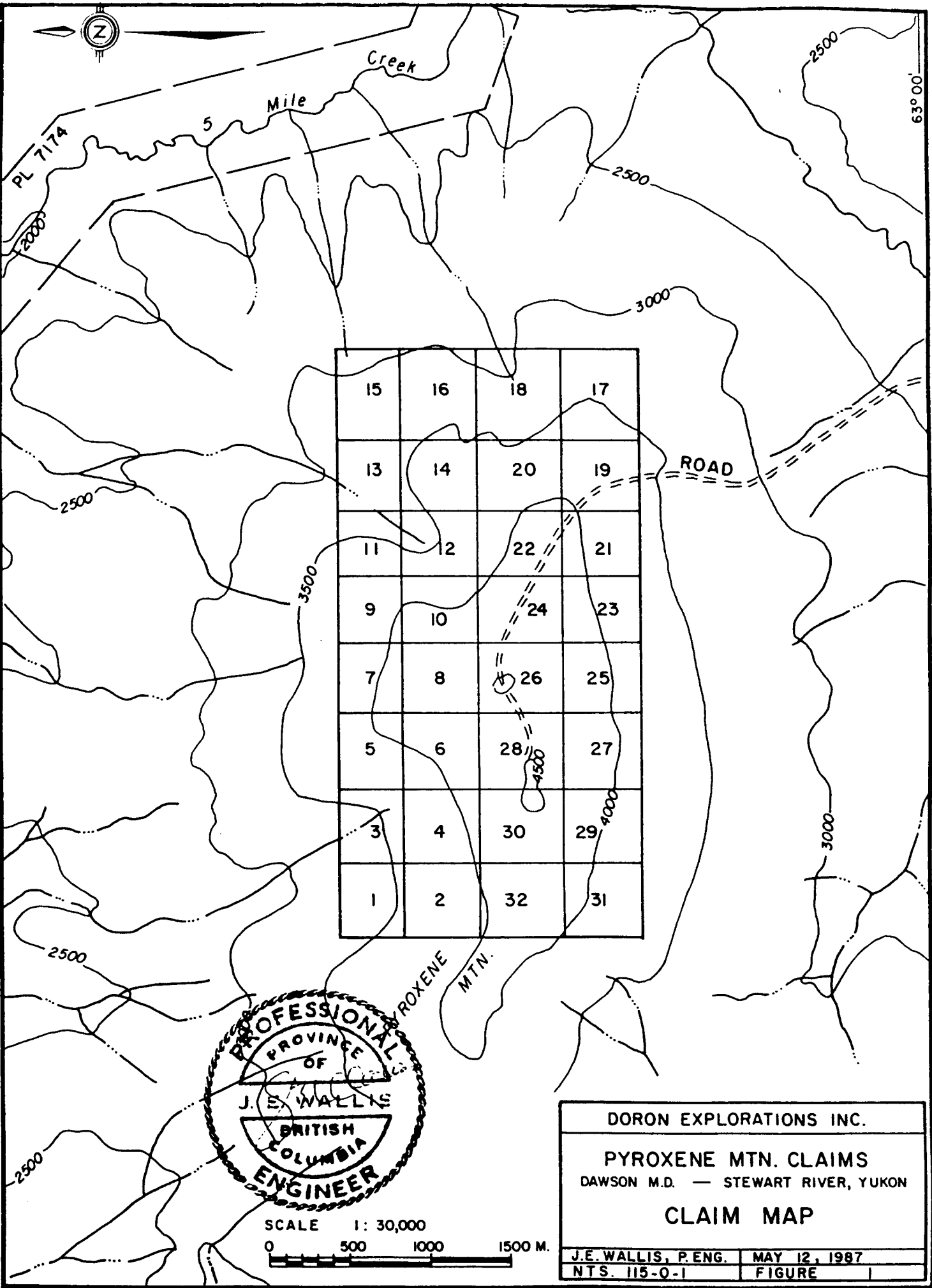
The property consists of 32 claims staked under the Yukon Quartz Mining Act. Details are as follows:

<u>Claim Name</u>	<u>Record No.</u>	<u>Due Date</u>
BTT 01-032	YA 87943-974	9 May 1988

Doron Exploration Inc. is the registered owner of the claim group.

HISTORY

The Pyroxene Mountain - Scroggie creek area was first examined by prospectors in the region in the early 1890's. During the late summer of 1898 a number of the creeks twenty-five miles up the Stewart River were stampered and staked. Mining of the placer gravels in all the creeks flowing northerly from Pyroxene Mtn. were active until 1915-16. The area was first examined by D.O. Cairns of the Geological Survey in 1917 and reported in Memoir 97. Detailed work was completed in the area by H.S. Bostock in 1935 through 1937, and detailed in Map 711A, Ogilvie, Yukon Territory by the Department of Mines and Resources, Mines and Geology Branch, H.S. Bostock, 1942. In G.S.C. Memoir 218, Mining Industry of Yukon, 1937, H.S. Bostock reported that "a miner working on a bench of Scroggie Creek below the mouth of Walhalla Creek has been recovering a considerable percentage of platinum with his gold". Follow-up showed that all of the creeks in the area producing gold and head watering in Pyroxene Mountain contained appreciable amounts of platinum.



PL 7174

5 Mile

Creek

2500

63° 00'

2500

3000

ROAD

2500

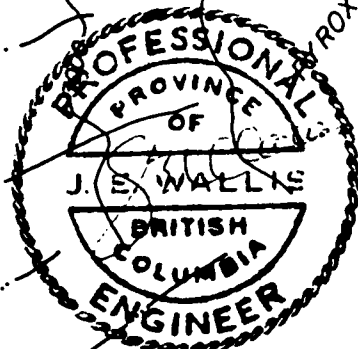
3500

15	16	18	17
13	14	20	19
11	12	22	21
9	10	24	23
7	8	26	25
5	6	28	27
3	4	30	29
1	2	32	31

PYROXENE MTN.

3000

2500



DORON EXPLORATIONS INC.	
PYROXENE MTN. CLAIMS	
DAWSON M.D. — STEWART RIVER, YUKON	
CLAIM MAP	
J.E. WALLIS, P. ENG.	MAY 12, 1987
NTS. 115-0-1	FIGURE 1

GEOLOGY

The geology of the Stewart River - Pyroxene Mountain region has been well documented by Geological Survey of Canada geologist H.S. Bostock on Map 771A - Ogilvie Map Sheet and by D.O. Cairns in Memoir 97 - D.O. Cairns, Geological Survey, 1917. The geological formations in the area are mainly old schistose rocks that are associated with gneissoid rocks and crystalline limestone. At Pyroxene Mountain, immediately north of Mariposa Creek an ultra-mafic intrusion of gabbro, pyroxenite, peridotite and serpentine occurs, that is younger than the schistose and related rocks of the Yukon Group, but Precambrian and later in age. These rocks are thought to be the source of the platinum minerals recovered with placer gold in the creeks with their sources in Pyroxene Mountain.

The following, Table 1 - Klondike Formations, is taken from Bostock, 1942:

TABLE 1
Klondike Formations

MESOZOIC

Jurassic or Later

- Granite and granodiorite

PALEOZOIC

Ordovician or Later

- Argillite, sandstone, conglomerate

PRECAMBRIAN AND LATER

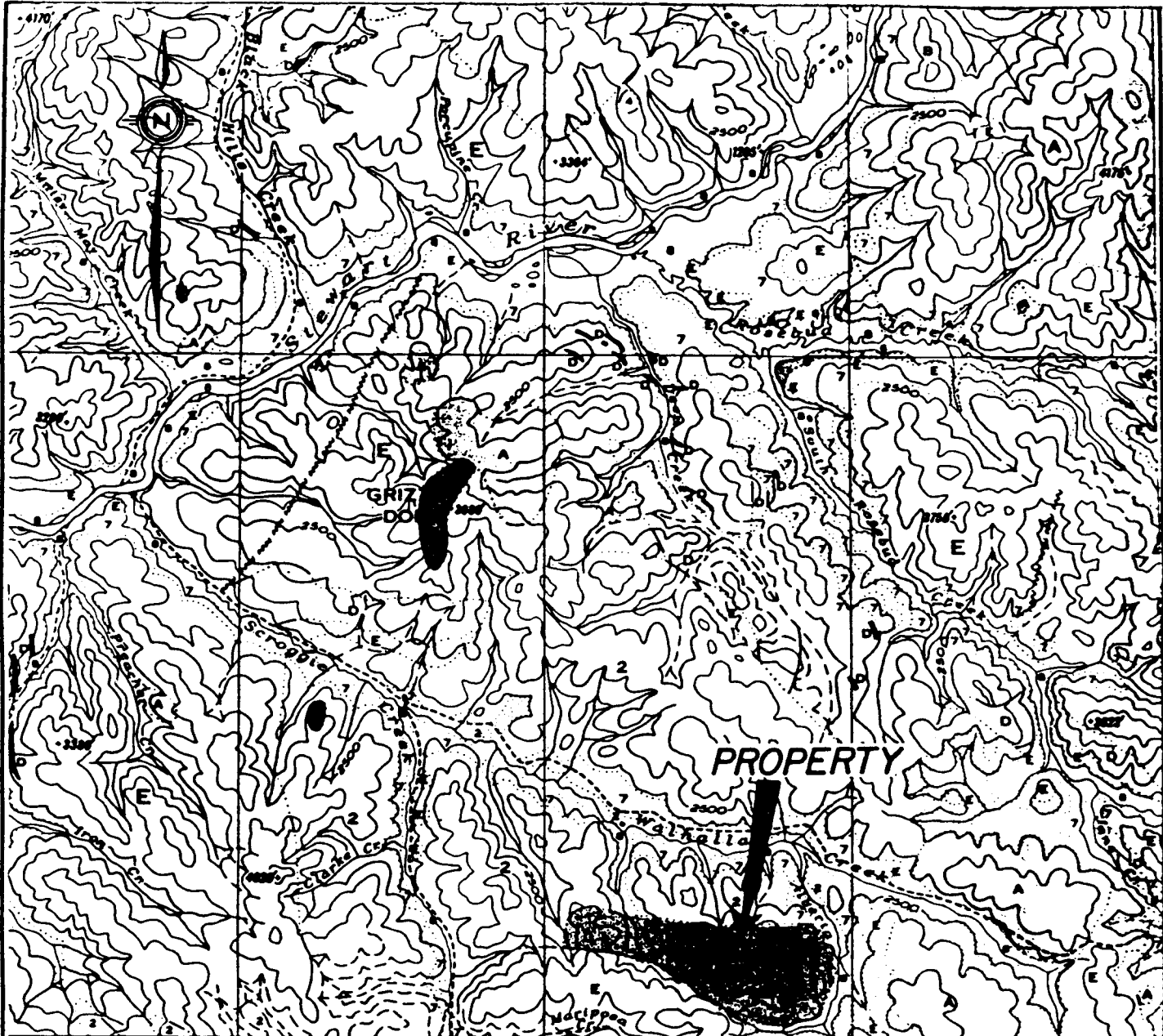
Gneissic granite

Klondike Schist

- Sericite schist and chlorite schist
- Gabbro, pyroxenite, peridotite, serpentine

Yukon Group

- Limestone
- Gneiss, quartzite, schist and slate



PRECAMBRIAN
AND
LATER

30'

15'

PALAEOZOIC MESOZOIC

JURASSIC OR LATER

2

Chiefly granite and granodiorite

ORDOVICIAN OR LATER

1

Argillite, sandstone, conglomerate

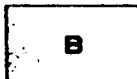
Scale. 253440

Miles



A

Chiefly gneissic granite



B

Klondike schist: sericite schist, minor chlorite schist



C

Gabbro, pyroxenite, peridotite; serpentine



D

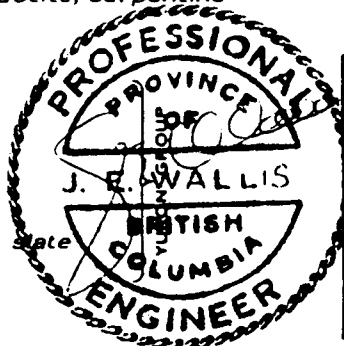
Limestone



E

Gneiss, quartzite, schist, slate

Deeply drift-covered areas



DORON EXPLORATIONS INC.

PYROXENE MTN. CLAIMS
DAWSON M.D. — STEWART RIVER, YUKON

REGIONAL GEOLOGY

J.E. WALLIS P.ENG.
NTS 115-0-1

MAY 12, 1987
FIGURE 2

DISCUSSIONS AND RESULTS

The Klondike Gold District covers an area of approximately 1,400 square miles. In an area this large, it is interesting to note that the only gold creeks that contain appreciable amounts of the platinum group of minerals drain from Pyroxene Mountain. Examination of the regional geology reveals that Pyroxene Mountain consists of an ultra-mafic intrusion of gabbro, pyroxenite, peridotite and serpentine rocks, all of which are favourable hosts for the platinum minerals. These facts allow for the simple deduction that this ultra-mafic intrusive is worthy of examining closely for a platinum target.

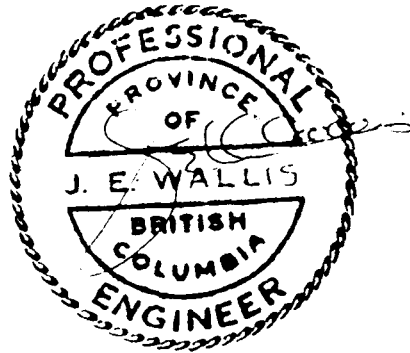
However, access to the area is not easy and as a result, the cost of supporting an exploration program in the area will be high. In addition, rock exposures are very limited and do not allow for a simple prospecting program. An exploration program on the claim group will have to rely heavily on rock geochemistry, stream sediment and soil geochemistry.

RECOMMENDATIONS

A very preliminary exploration program consisting of basic prospecting with collection of rock, stream sediments and soils for geochemical analysis is recommended for 1987. All samples should be collected along or near drainage systems through the claim group. Cost estimates for the program are detailed as follows:

Geologist and assistant for 30 days	\$ 15,000
Helicopter support: 4 hours at \$500/hr	2,000
Camp costs	3,000
Geochemical analysis	<u>5,000</u>
Sub-total	\$ 25,000
Contingency	<u>3,000</u>
TOTAL	<u><u>\$ 28,000</u></u>

A careful review of all results from this program may provide the necessary data required to mount a major exploration program on the claim group.



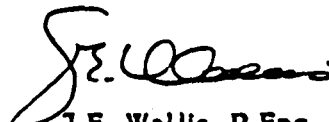
CERTIFICATE OF QUALIFICATIONS

I, J.E. Wallis, of Box 59, Atlin, British Columbia, do certify that:

1. I am a registered Professional Engineer in good standing in the Association of Professional Engineers of British Columbia.
2. I am a graduate of the Haileybury School of Mines 1958, the University of Alaska, B.Sc. 1965 and Queen's University, M.Sc. (Eng) 1967.
3. I have been practicing my profession for 28 years and as a Professional Engineer for the past 21 years.
4. I do not have nor have I ever had any interest direct, indirect or contingent, in the shares of Doron Exploration, Inc., nor do I expect to receive any interest, either direct or indirect, in the properties or securities pertaining thereto.
4. I have personally visited the property reviewed in this report and am familiar with the district.
5. I hereby grant my permission for Doron Exploration, Inc. to use this report for filing with the Vancouver Stock Exchange as partial requirement of a Statement of Material Facts or for any legal purposes normal to the business of Doron Exploration, Inc.

Dated at Atlin, British Columbia, this 12th day of May, 1987.

DATE DUE


J.E. Wallis, P.Eng.